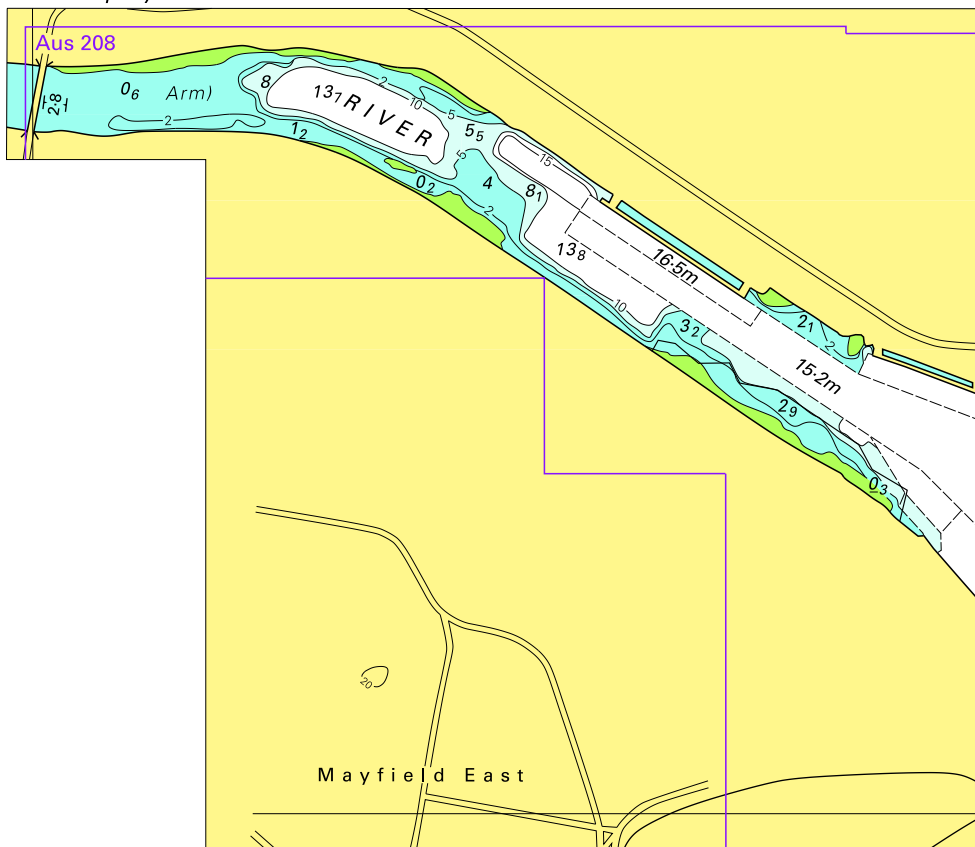


To accompany Australian Notice to Mariners 352/2010

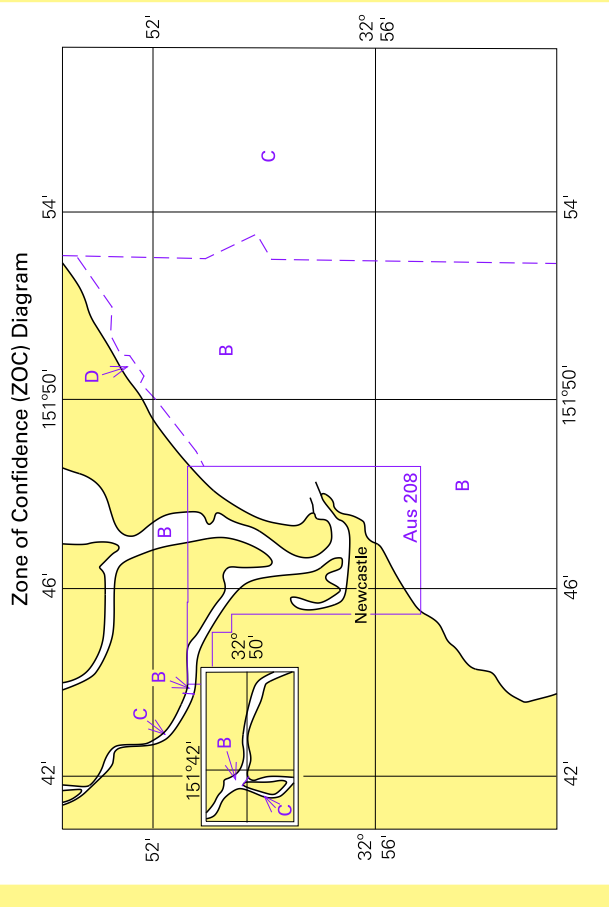


Block for chart Aus 207

© Commonwealth of Australia 2010

(129.2 x 111.3mm)

To accompany Australian Notice to Mariners 352/2010



ZOC CATEGORIES
(For details see Australian Seafarers Handbook, AHP 20)

ZOC	POSITION ACCURACY	DEPTH ACCURACY	SEAFLOOR COVERAGE
A1	±5m	=0.50m + 1% d	All significant seafloor features detected
A2	±20m	=1.00m + 2% d	All significant seafloor features detected
B	±50m	=1.00m + 2% d	Uncharted features hazardous to surface navigation are not expected but may exist
C	±500m	=2.00m + 5% d	Depth anomalies may be expected
D	Worse than ZOC C	Worse than ZOC C	Large depth anomalies may be expected
U	Unassessed - The quality of the bathymetric data has yet to be assessed		

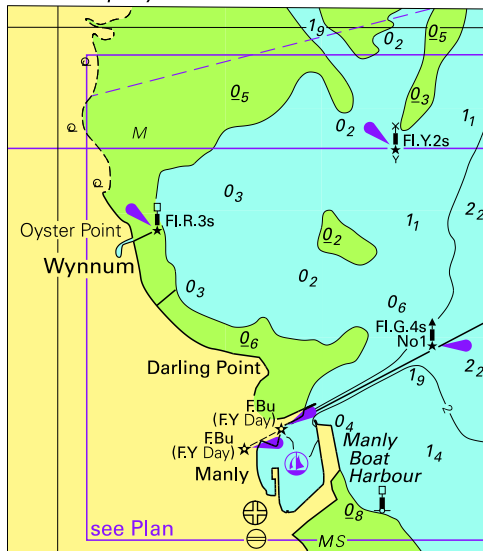
Hamilton North

Block for chart Aus 207

© Commonwealth of Australia 2010

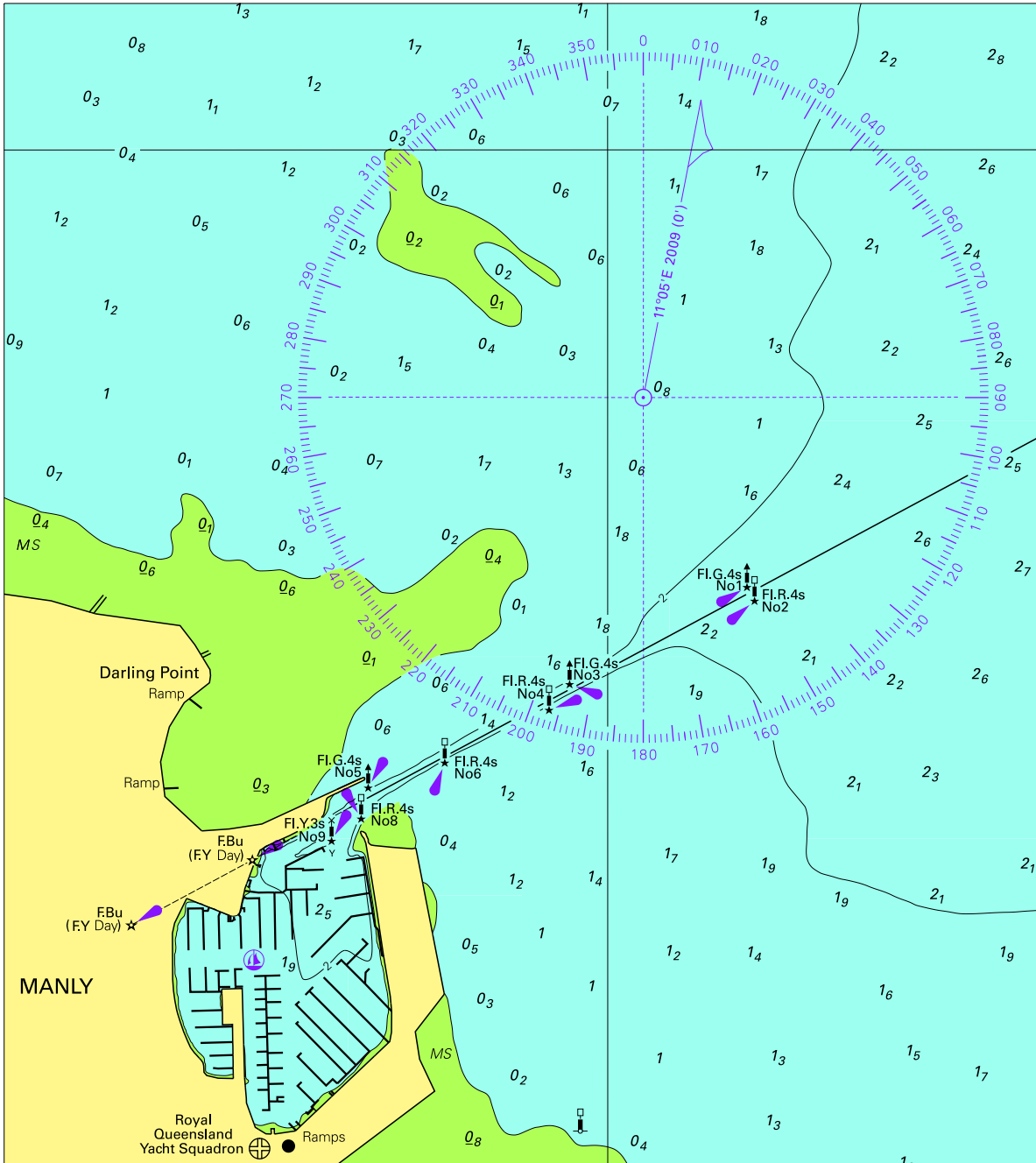
(225.4 x 88.2mm)

To accompany Australia Notice to Mariners 354/2010



© Commonwealth of Australia 2010
Block for chart Aus 236 (63.6 x 72.3mm)

To accompany Australia Notice to Mariners 354/2010



Block for chart Aus 236

© Commonwealth of Australia 2010

13 (156.4 x 175.2mm)