

*To accompany Australian Notice to Mariners 205/2010*

OMISSIONS FROM CHART

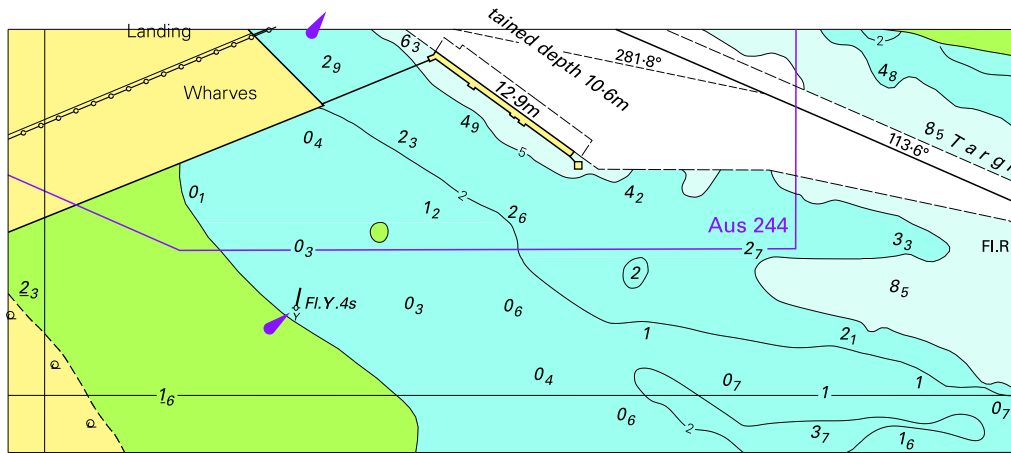
Certain information has been omitted from this chart. For details see the larger scale nautical charts and relevant nautical publications.

*Note for chart Aus 721.*





To accompany Australian Notice to Mariners 196/2010



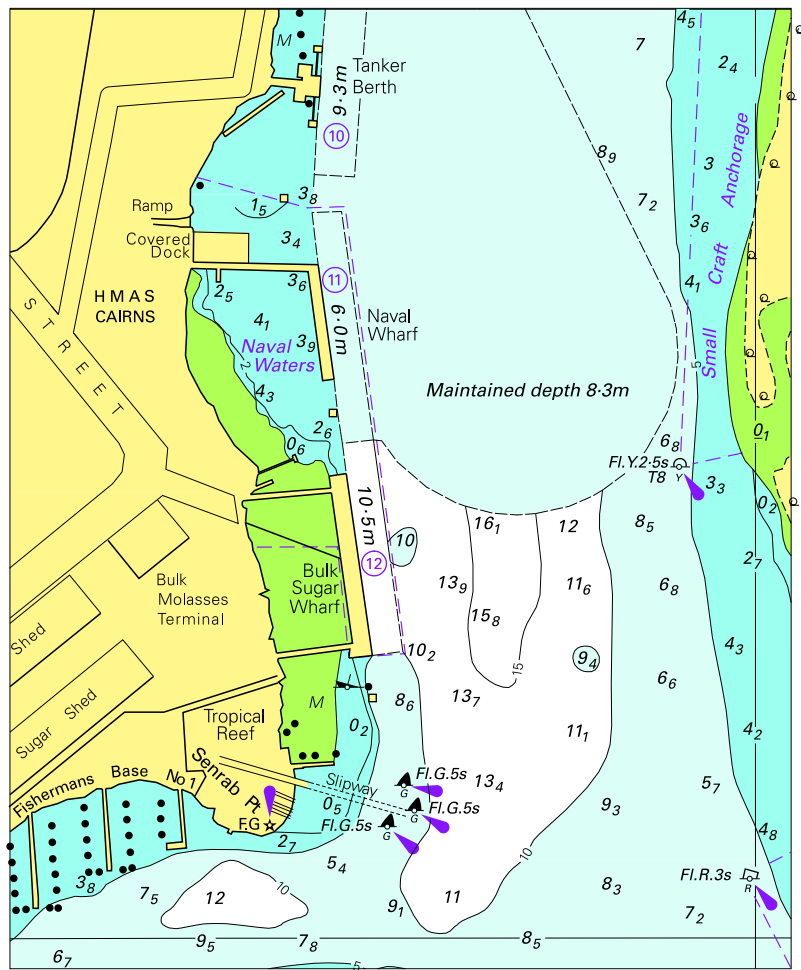
Block for chart Aus 245

© Commonwealth of Australia 2010

(55.9 x 132.8mm)



To accompany Australian Notice to Mariners 200/2010

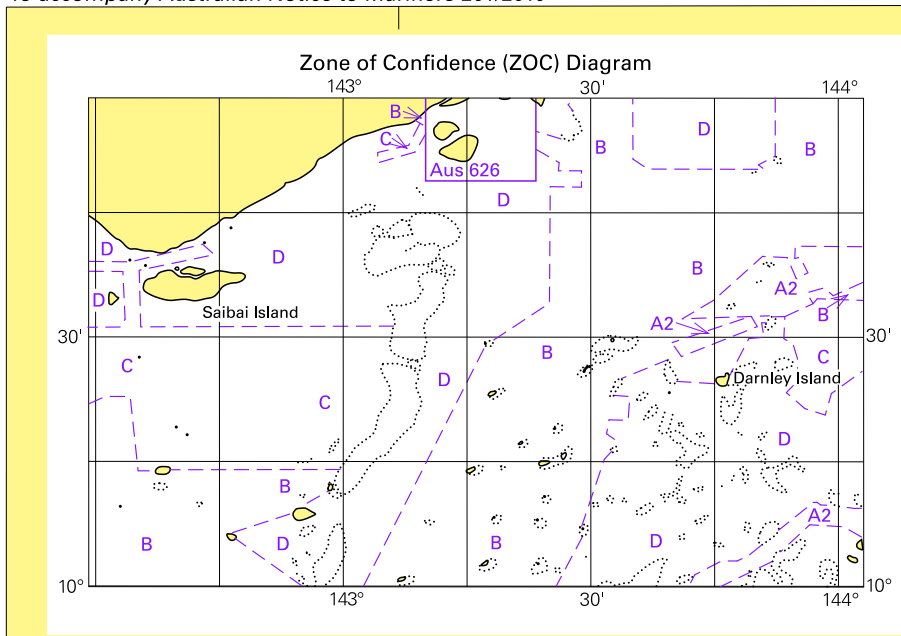


© Commonwealth of Australia 2010

Block for chart Aus 264

(103.3 x 127.0mm)

To accompany Australian Notice to Mariners 201/2010



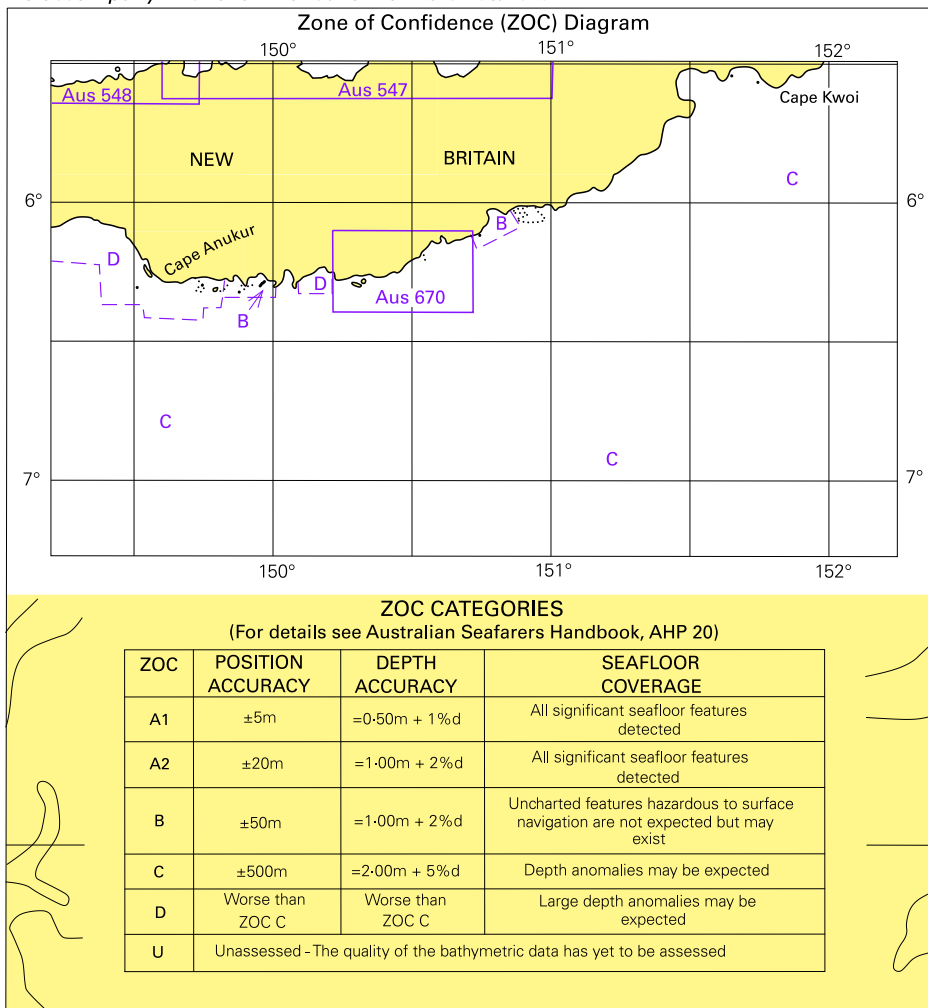
Block for chart Aus 840

© Commonwealth of Australia 2010

(119.4 x 83.3mm)



To accompany Australian Notice to Mariners 203/2010

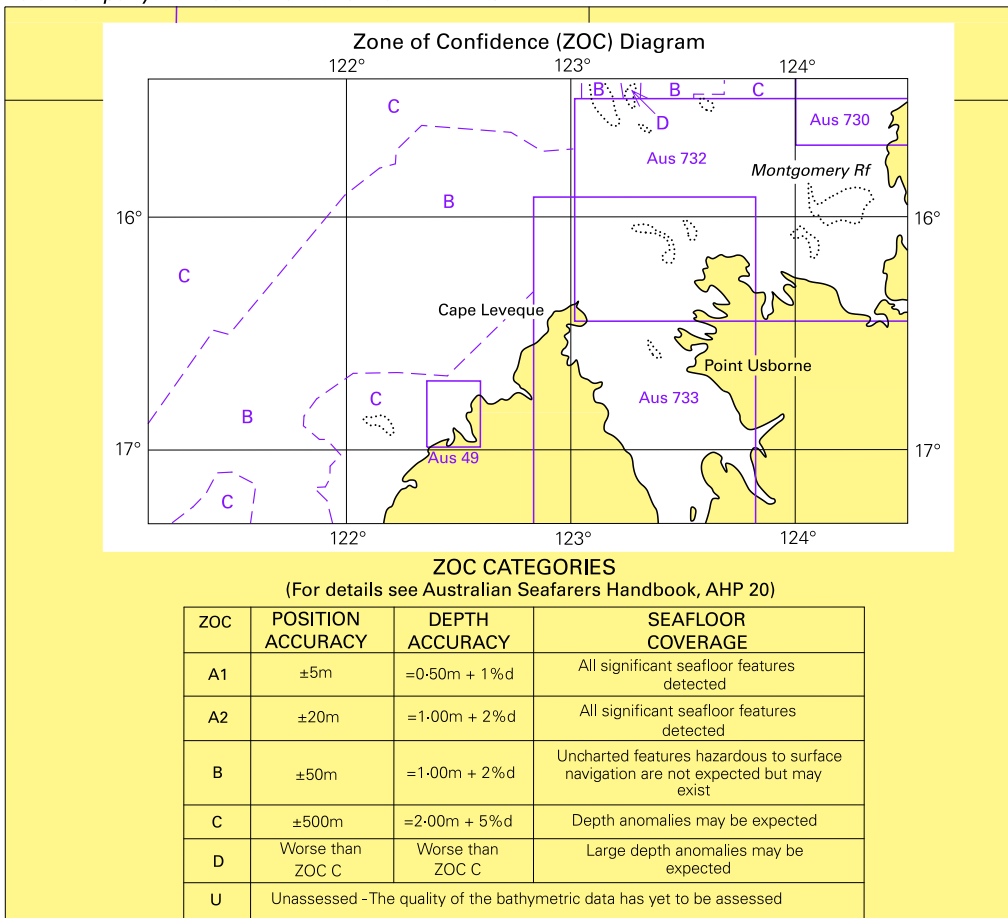


Block for chart Aus 396

© Commonwealth of Australia 2010

(123-3 x 132-8mm)

To accompany Australian Notice to Mariners 206/2010




Block for chart Aus 323

© Commonwealth of Australia 2010

(133 x 120.6mm)

To accompany Australian Notice to Mariners 209/2010

NORTH WEST COASTAL HIGHWAY



AUSTRALIA - WEST COAST  
WESTERN AUSTRALIA

**PEPPER POINT  
TO  
GERALDTON**

26°19'49"S  
114°48'51"E

Block for chart Aus 332

© Commonwealth of Australia 2010

(148.0 x 100.8mm)