

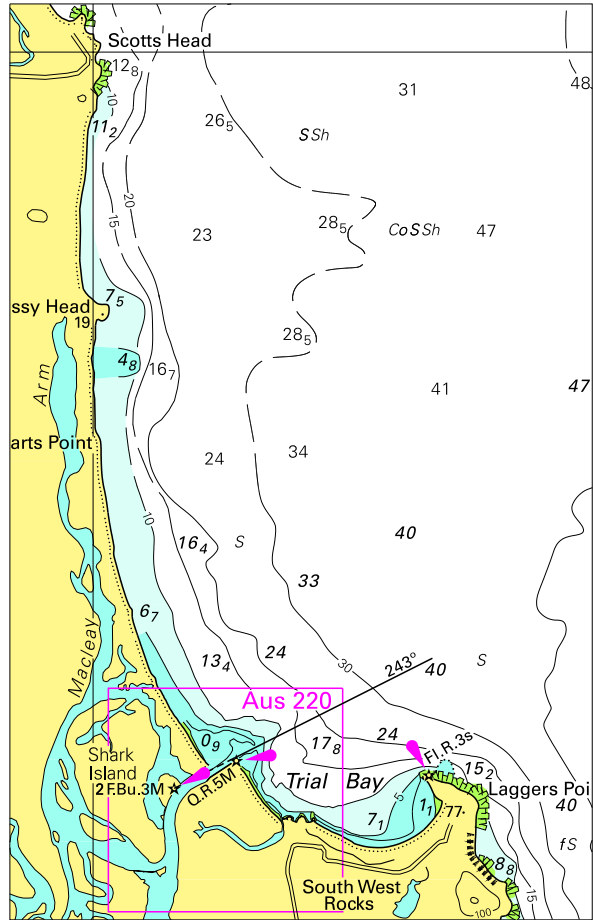
To accompany Australian Notice to Mariners 1372/2010

PILOT

Vessels requiring a pilot to enter the following ports should not proceed south of latitude:
Port Dalrymple 41° 00' S, Devonport 41° 07' S, Burnie 41° 02' S.

Note for chart Aus 799.

To accompany Australian Notice to Mariners 1362/2010

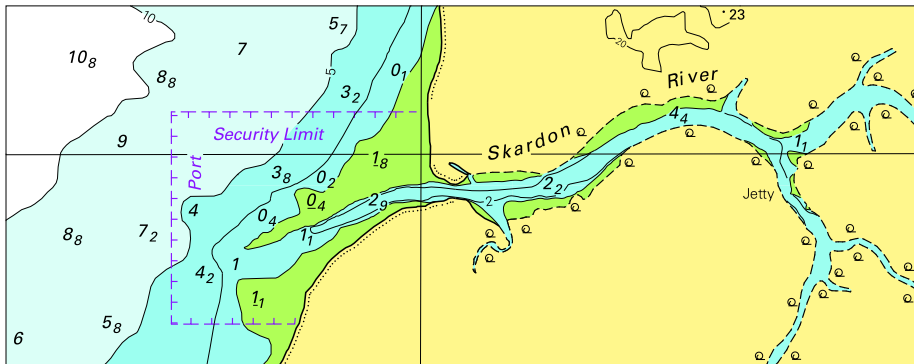


© Commonwealth of Australia 2010

Block for chart Aus 811

121-1 x 77.0mm

To accompany Australian Notice to Mariners 1364/2010

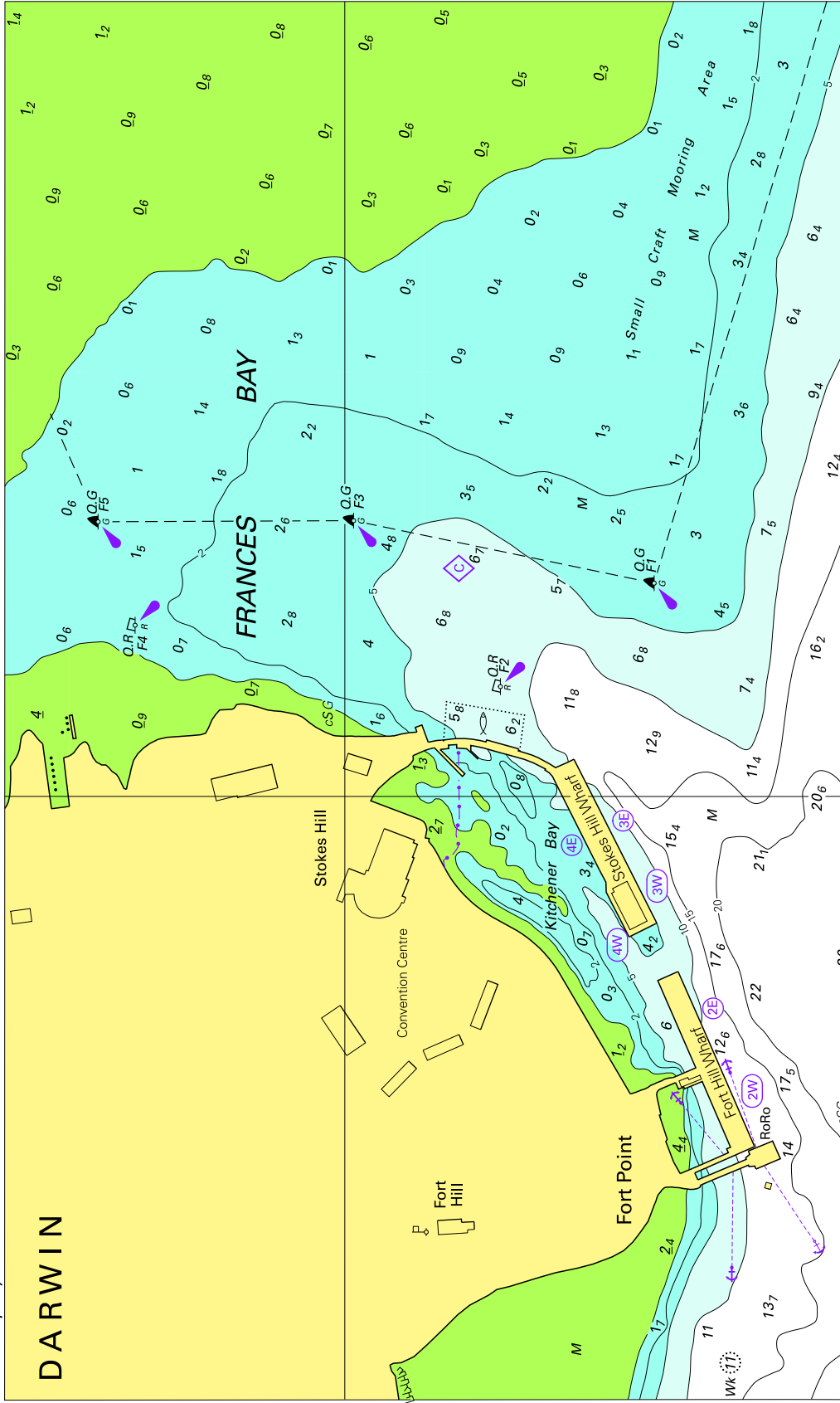


Block for chart Aus 701

© Commonwealth of Australia 2010

(121-0 x 47-5mm)

To accompany Australian Notice to Mariners 1365/2010

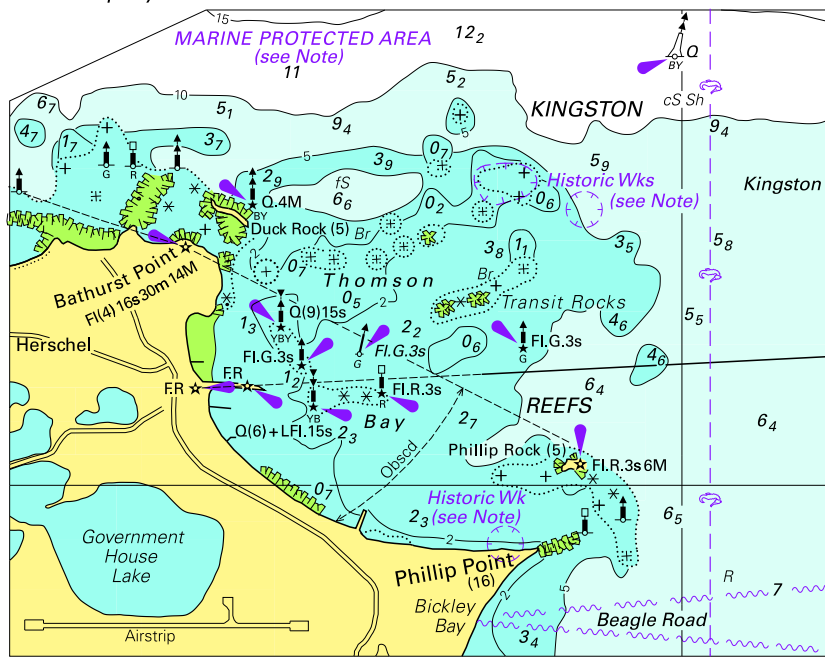


(223:0 x 133:9mm)

© Commonwealth of Australia 2010

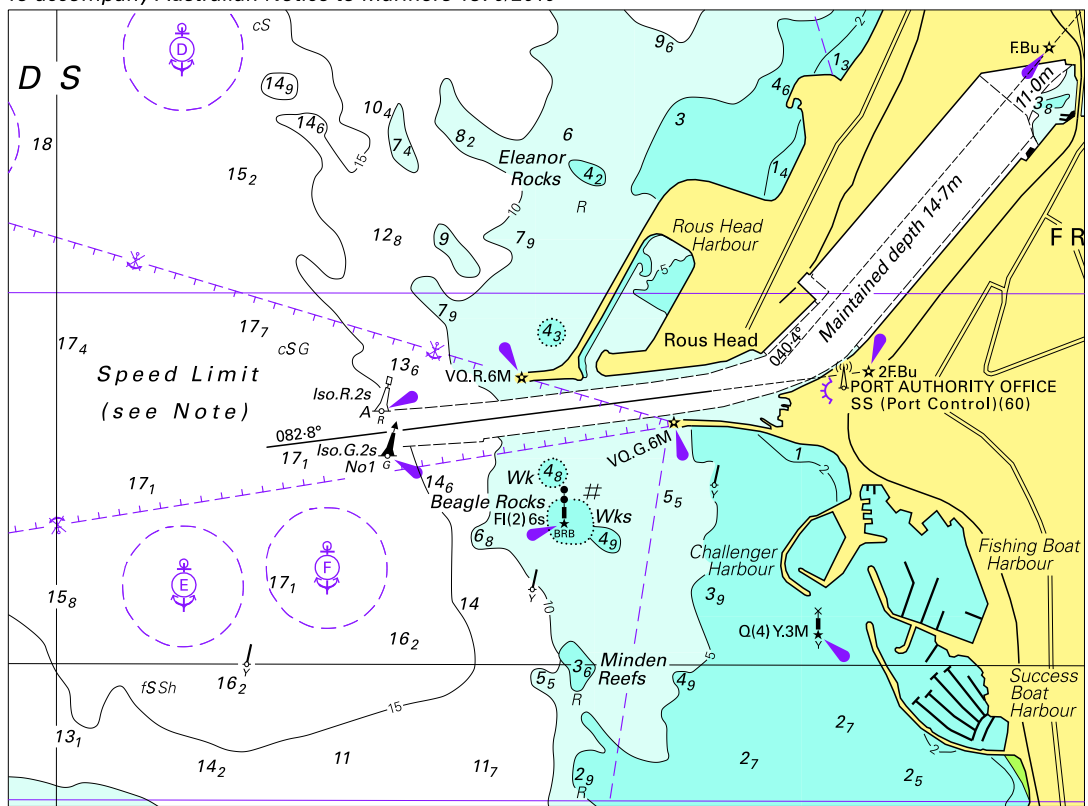
Block for chart Aus 24

To accompany Australian Notice to Mariners 1369/2010



Block for chart Aus112 © Commonwealth of Australia 2010 (107.9 x 85.5mm)

To accompany Australian Notice to Mariners 1370/2010



Block for chart Aus 112

© Commonwealth of Australia 2010

(142.3 x 105.3mm)

To accompany Australian Notice to Mariners 1370/2010

