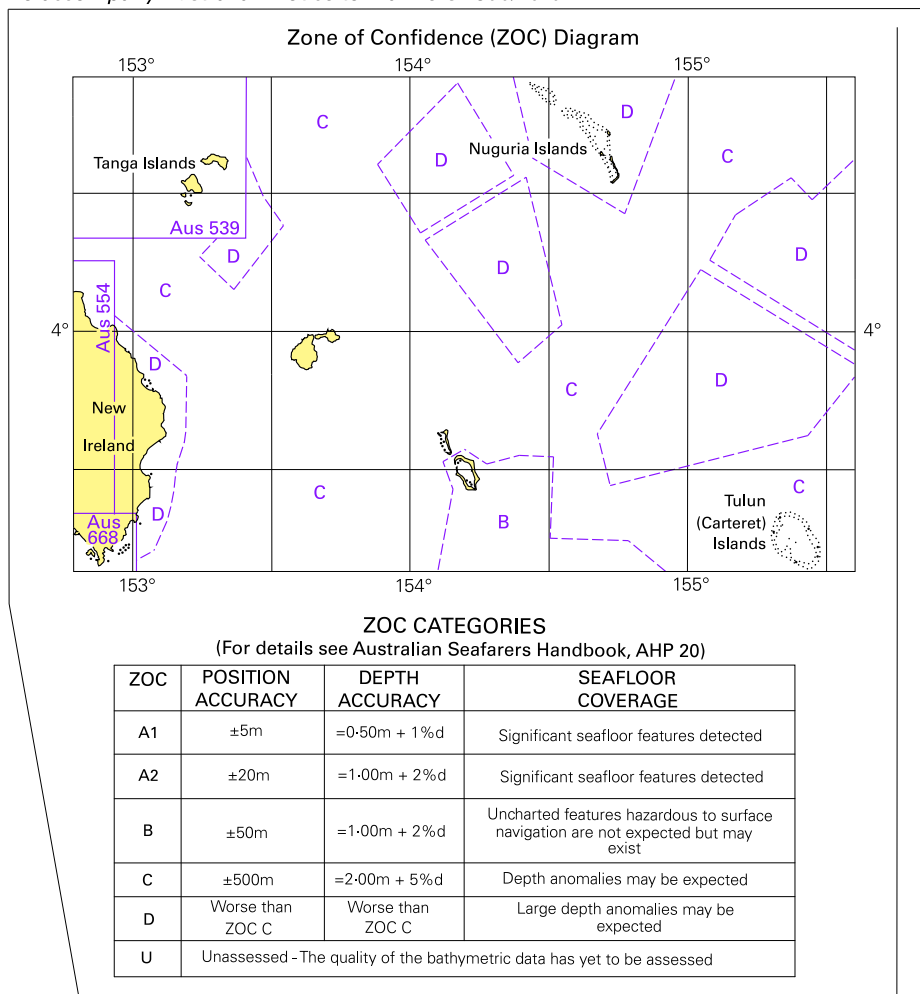




To accompany Australian Notice to Mariners 1300/2010

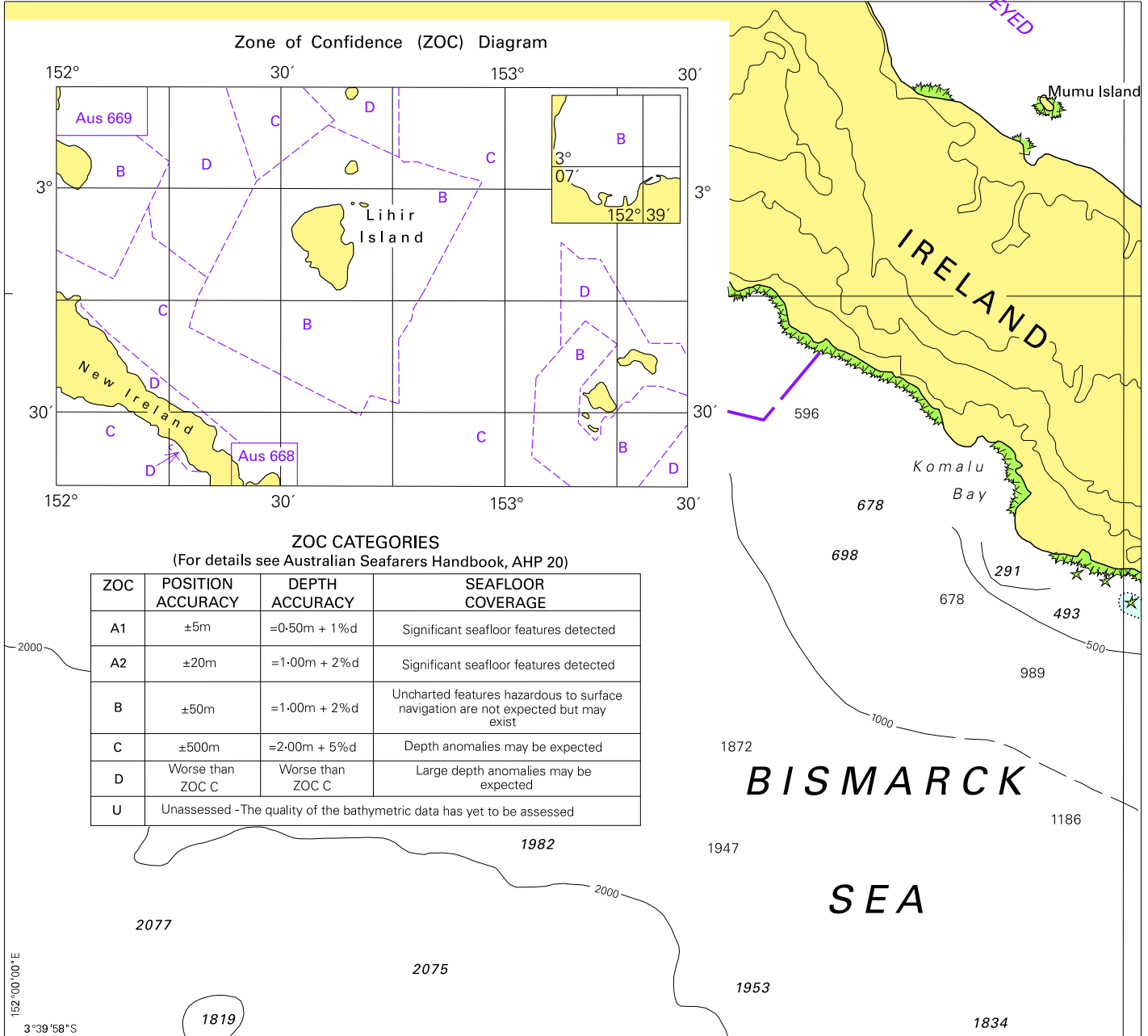


Block for chart Aus 398

© Commonwealth of Australia 2010

(121.6 x 131mm)

To accompany Australian Notice to Mariners 1300/2010

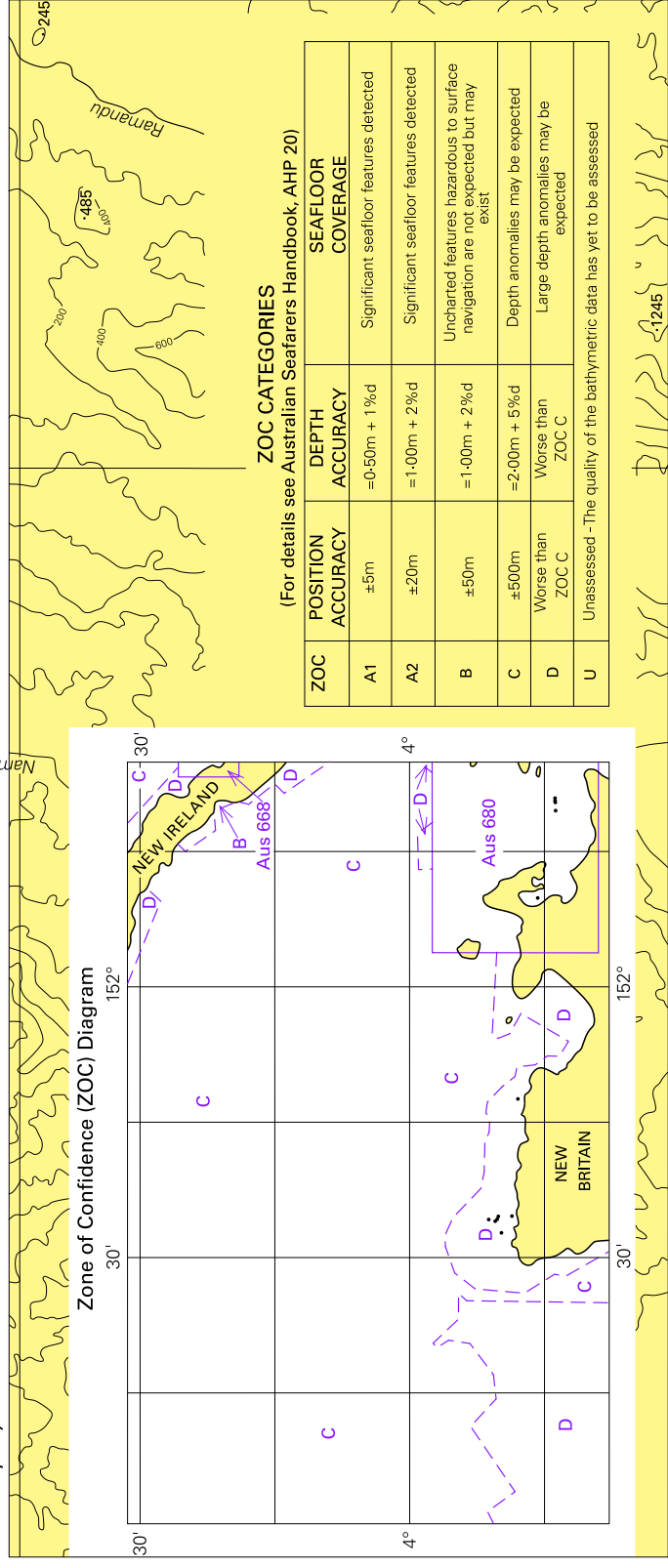


Block for chart Aus 539

© Commonwealth of Australia 2010

(185.9 x 169.6mm)

To accompany Australian Notice to Mariners 1300/2010



Zone of Confidence (ZOC) Diagram

**ZOC CATEGORIES**

(For details see Australian Seafarers Handbook, AHP 20)

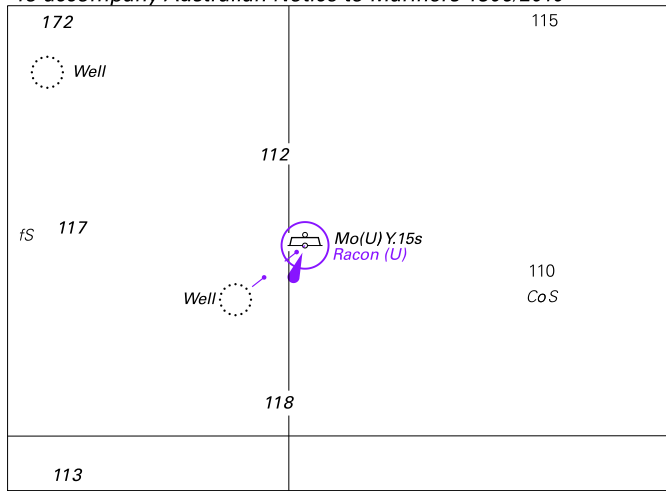
ZOC	POSITION ACCURACY	DEPTH ACCURACY	SEAFLOOR COVERAGE
A1	±5m	=0.50m + 1% d	Significant seafloor features detected
A2	±20m	=1.00m + 2% d	Significant seafloor features detected
B	±50m	=1.00m + 2% d	Uncharted features hazardous to surface navigation are not expected but may exist
C	±500m	=2.00m + 5% d	Depth anomalies may be expected
D	Worse than ZOC C	Worse than ZOC C	Large depth anomalies may be expected
U	Unassessed	The quality of the bathymetric data has yet to be assessed	

Block for chart Aus 545

© Commonwealth of Australia 2010

(210-9 x 88-3mm)

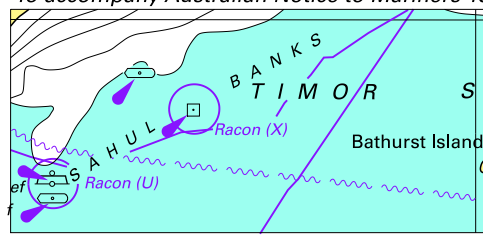
To accompany Australian Notice to Mariners 1306/2010



© Commonwealth of Australia 2010 (88.3 x 64.1mm)

Block for chart Aus 314

To accompany Australian Notice to Mariners 1306/2010

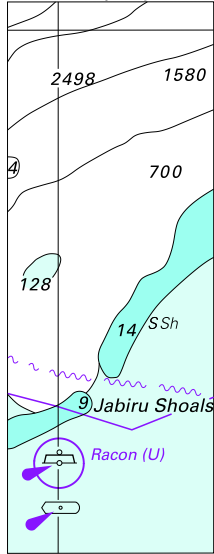


© Commonwealth of Australia 2010

Block for chart Aus 4060

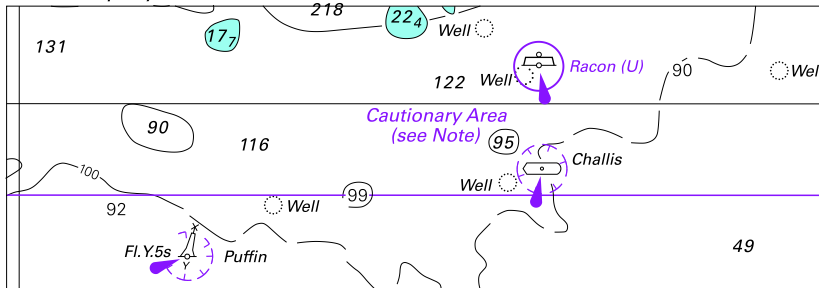
(62.7 x 29.5mm)

To accompany Australian Notice to Mariners 1306/2010



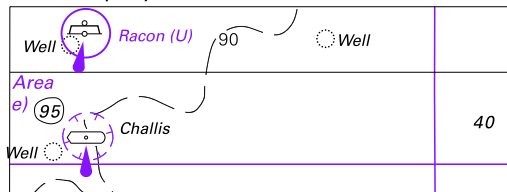
© Commonwealth of Australia 2010  
**Block for chart Aus 4603**  
 (27.3 x 72.9mm)

To accompany Australian Notice to Mariners 1306/2010



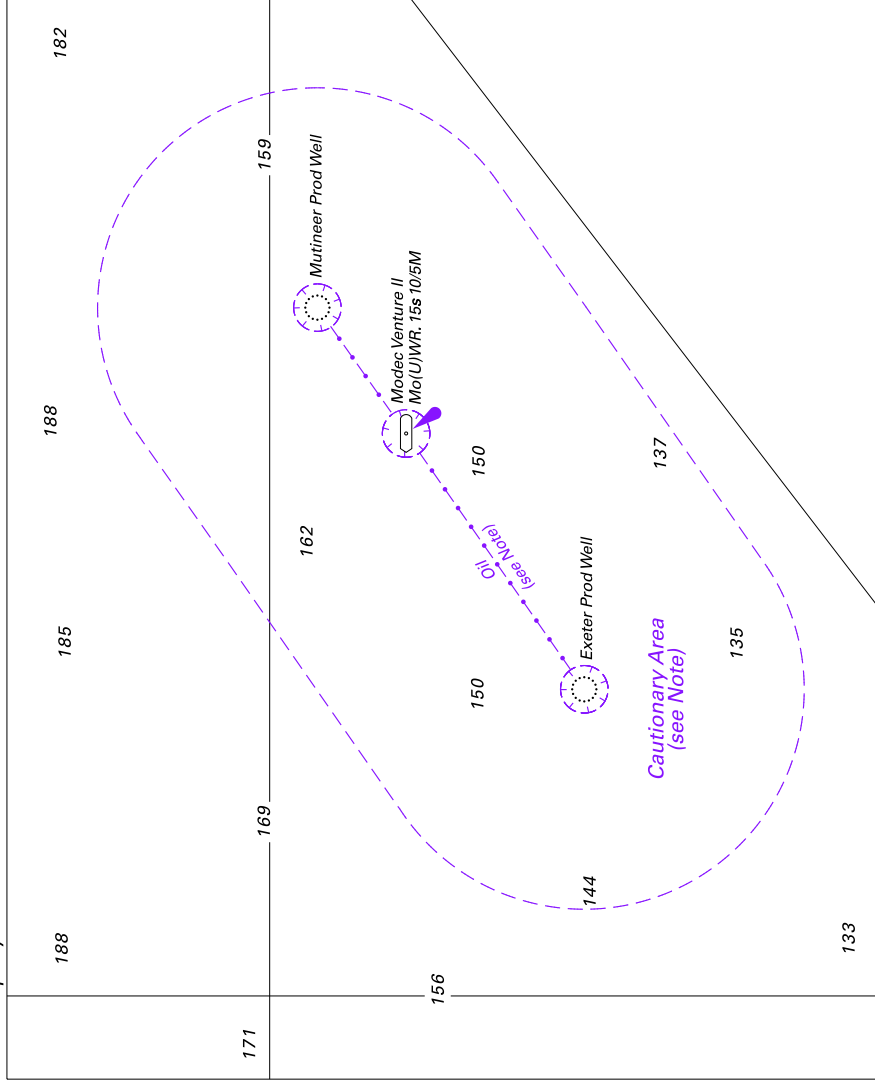
© Commonwealth of Australia 2010  
**Block for chart Aus 4721**  
 (108.8 x 37.6mm)

To accompany Australian Notice to Mariners 1306/2010



© Commonwealth of Australia 2010  
**Block for chart Aus 4722**  
 (67.0 x 25.0mm)

To accompany Australian Notice to Mariners 1309/2010



Block for chart Aus 741

© Commonwealth of Australia 2010

(115.9 x 143.0mm)