

To accompany Australian Notice to Mariners 1177/2010

HISTORIC WRECK

The site of an historic wreck is protected from unauthorised interference. For details see Australian Seafarers Handbook AHP 20.

Note for chart Aus 173.

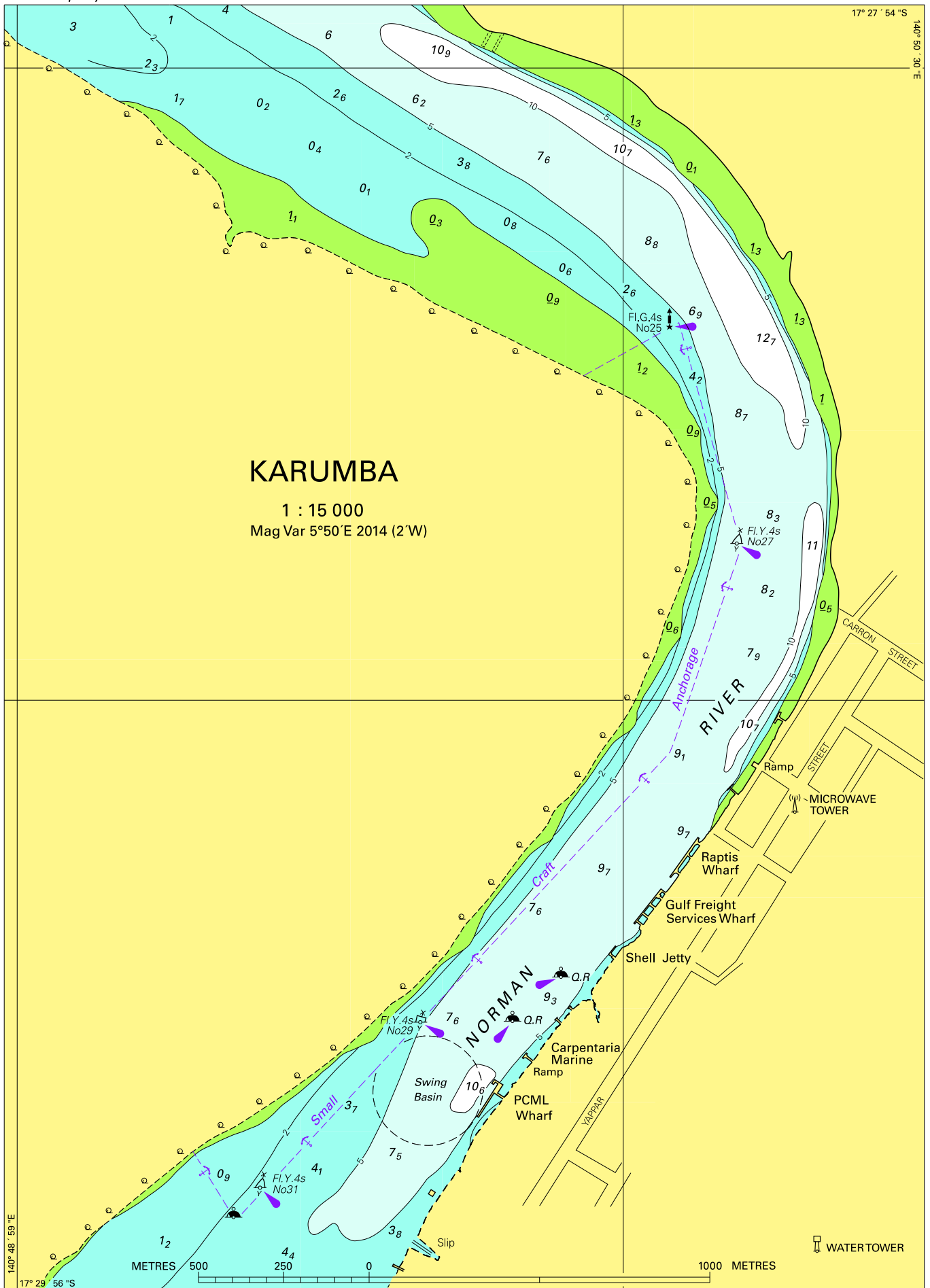
To accompany Australian Notice to Mariners 1177/2010

HISTORIC WRECK

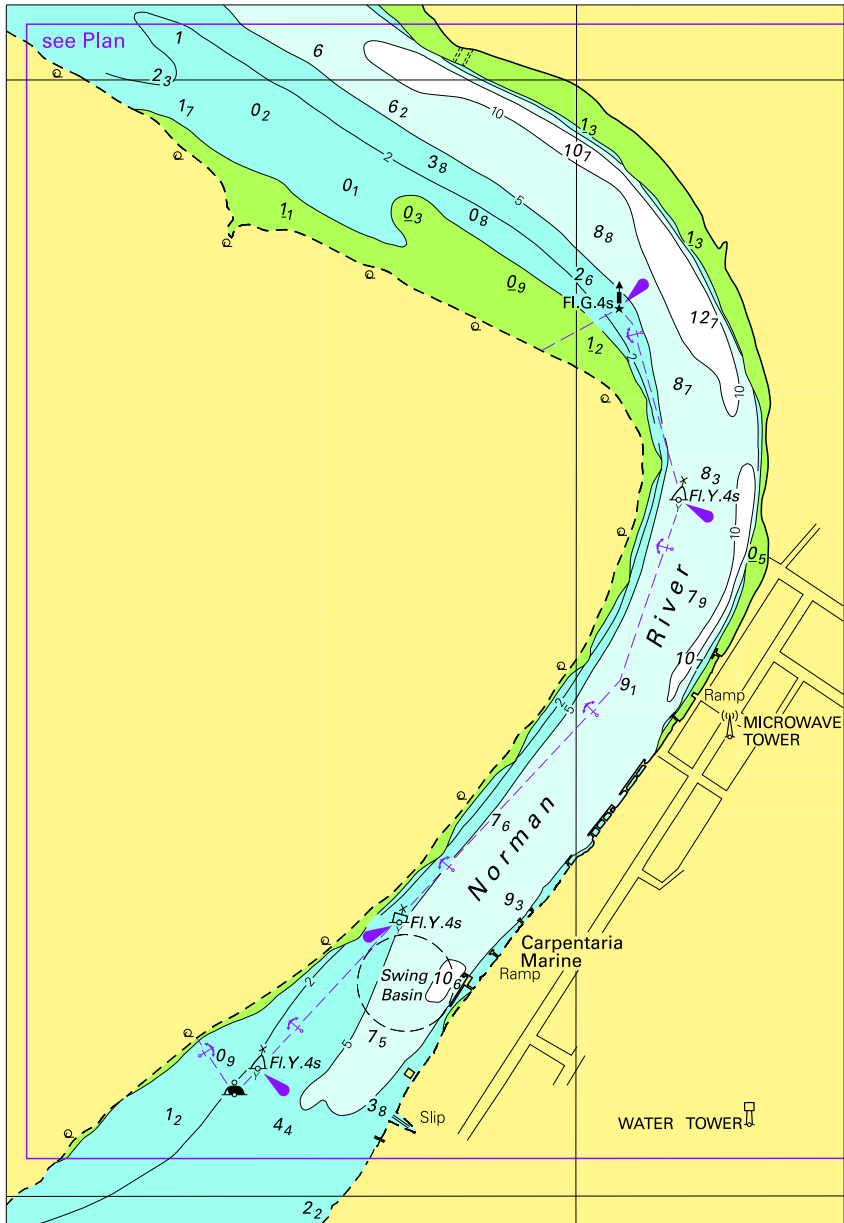
The site of an historic wreck is protected from unauthorised interference. For details see Australian Seafarers Handbook AHP 20.

Note for chart Aus 795.

To accompany Australian Notice to Mariners 1164/2010



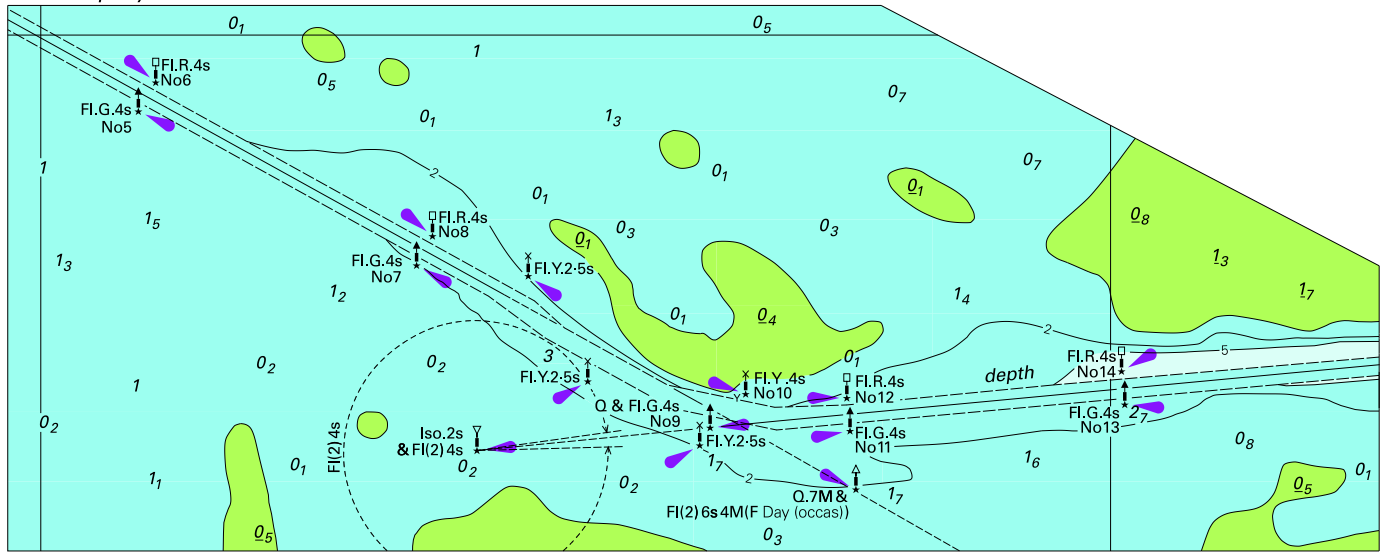
To accompany Australian Notice to Mariners 1164/2010



Block for chart Aus 6 ©Commonwealth of Australia 2010

(110.8 x 161.4mm)

To accompany Australian Notice to Mariners 1164/2010

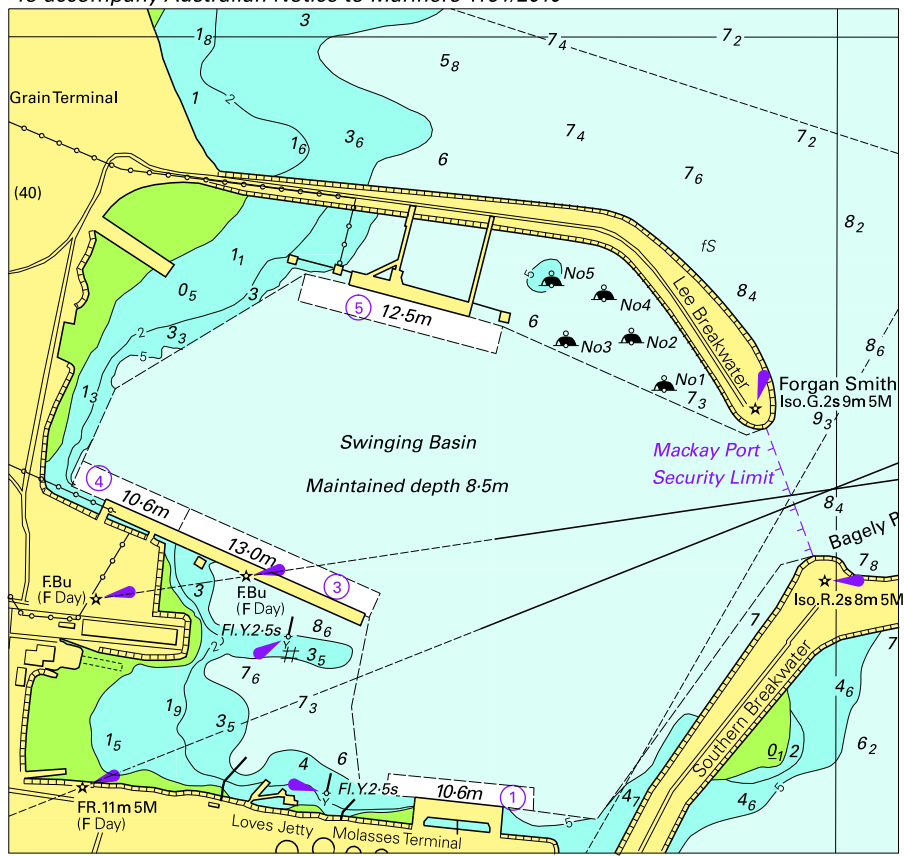


Block for chart Aus 6

©Commonwealth of Australia 2010

(72.1 x 181.4mm)

To accompany Australian Notice to Mariners 1161/2010

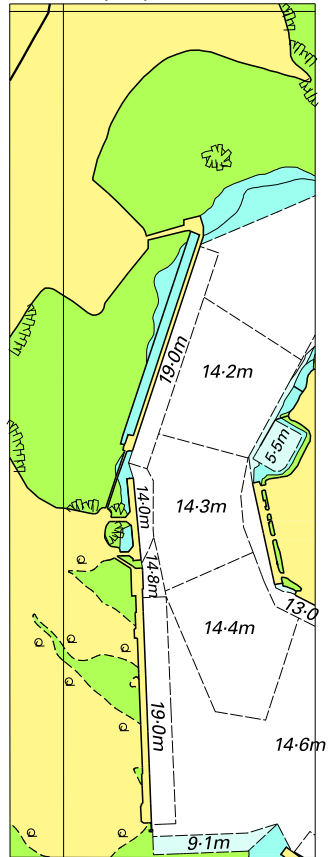


Block for chart Aus 250

© Commonwealth of Australia 2010

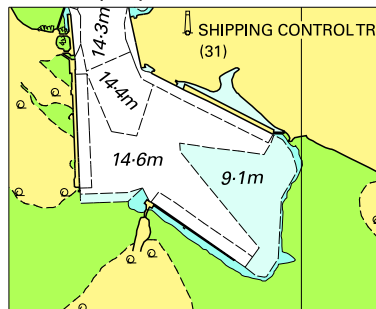
(117.7 x 111.7mm)

To accompany Australian Notice to Mariners 1168/2010



© Commonwealth of Australia 2010
Block for chart Aus 52
(40.4 x 112.9mm)

To accompany Australian Notice to Mariners 1168/2010



© Commonwealth of Australia 2010
Block for chart Aus 53 (49.2 x 40.1mm)

