

To accompany Australian Notice to Mariners 896/2010

HISTORIC WRECK

The site of an historic wreck is protected from unauthorised interference. For details see Australian Seafarers Handbook AHP 20.

Note for chart Aus 610.

To accompany Australian Notice to Mariners 899/2010

HISTORIC WRECK

The site of an historic wreck is protected from unauthorised interference. For details see Australian Seafarers Handbook AHP 20.

Note for chart Aus 245.

To accompany Australian Notice to Mariners 899/2010

HISTORIC WRECK

The site of an historic wreck is protected from unauthorised interference. For details see Australian Seafarers Handbook AHP 20.

Note for chart Aus 246.

To accompany Australian Notice to Mariners 899/2010

HISTORIC WRECK

The site of an historic wreck is protected from unauthorised interference. For details see Australian Seafarers Handbook AHP 20.

Note for chart Aus 820.

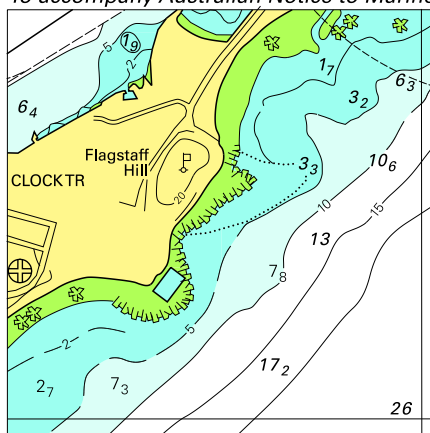
To accompany Australian Notice to Mariners 899/2010

HISTORIC WRECK

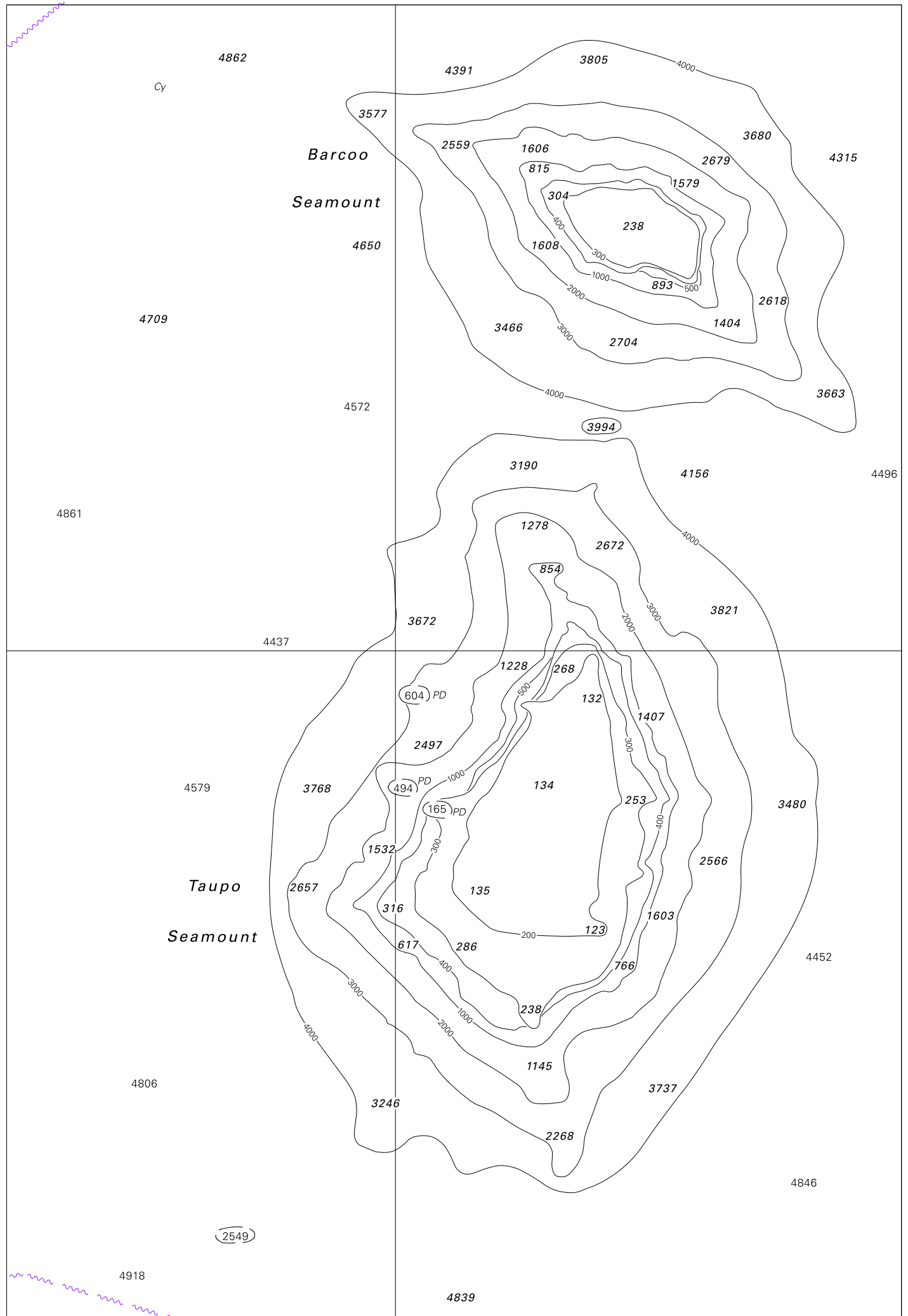
The site of an historic wreck is protected from unauthorised interference. For details see Australian Seafarers Handbook AHP 20.

Note for chart AX 0820E.

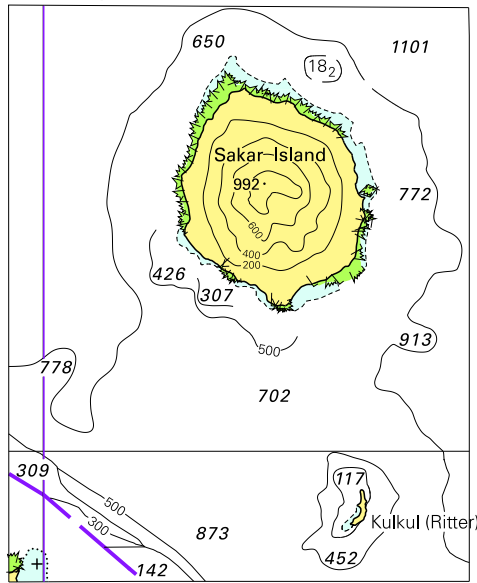
To accompany Australian Notice to Mariners 894/2010



© Commonwealth of Australia 2010
Block for chart Aus 207 (56.7 x 56.1mm)

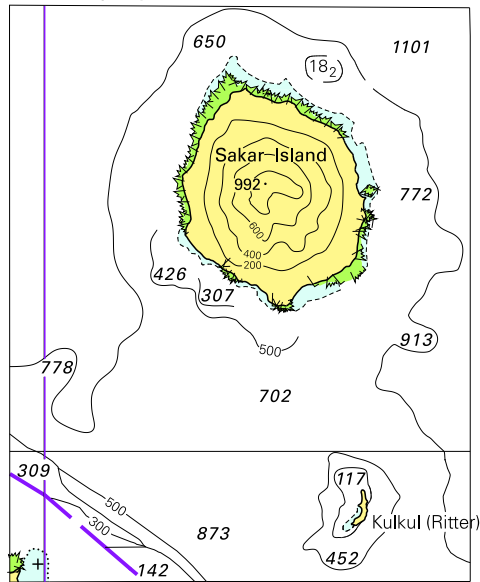


To accompany Australian Notice to Mariners 903/2010

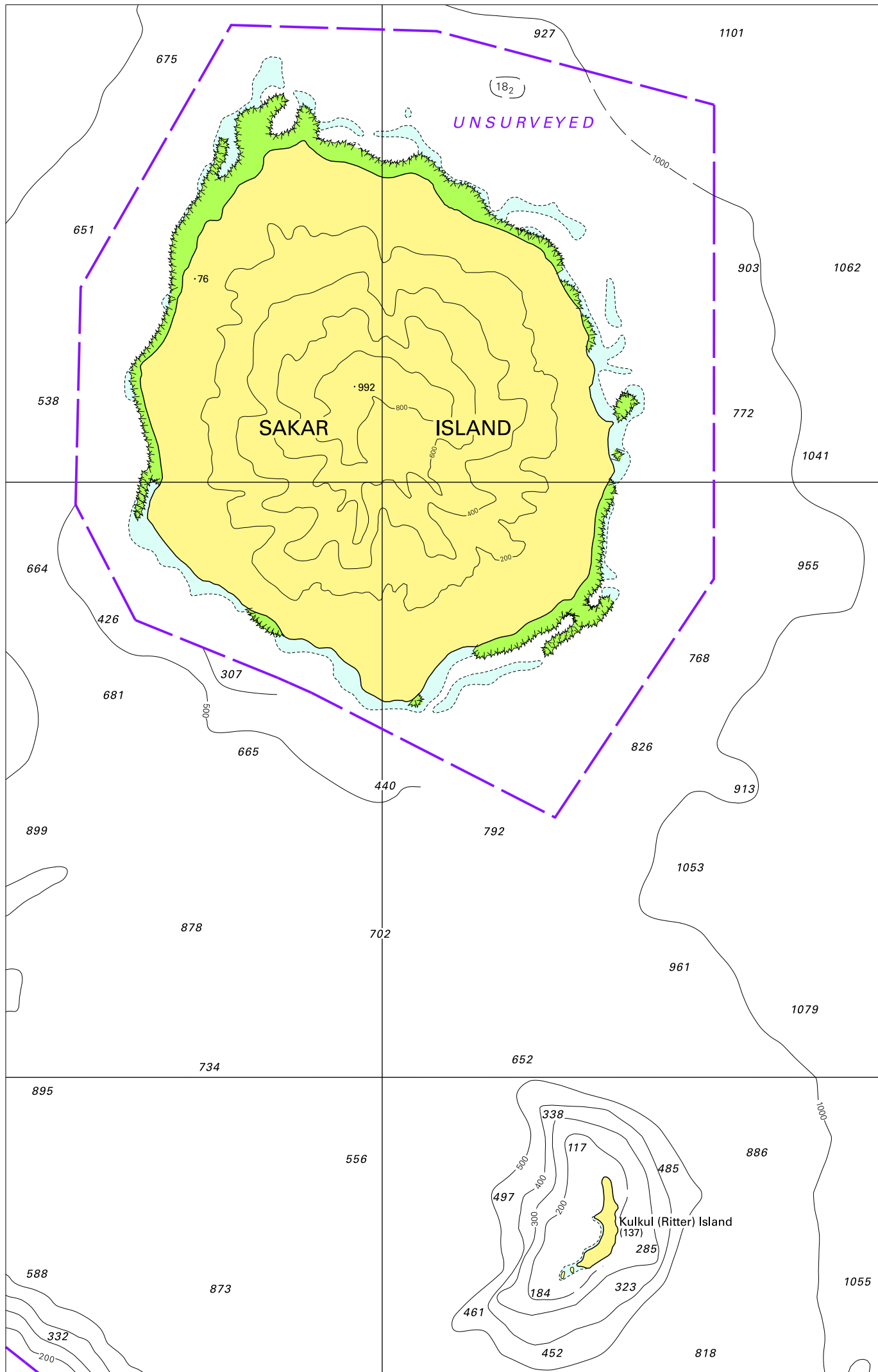


© Commonwealth of Australia 2010
Block for Aus 386 (60.9 x 75.9mm)

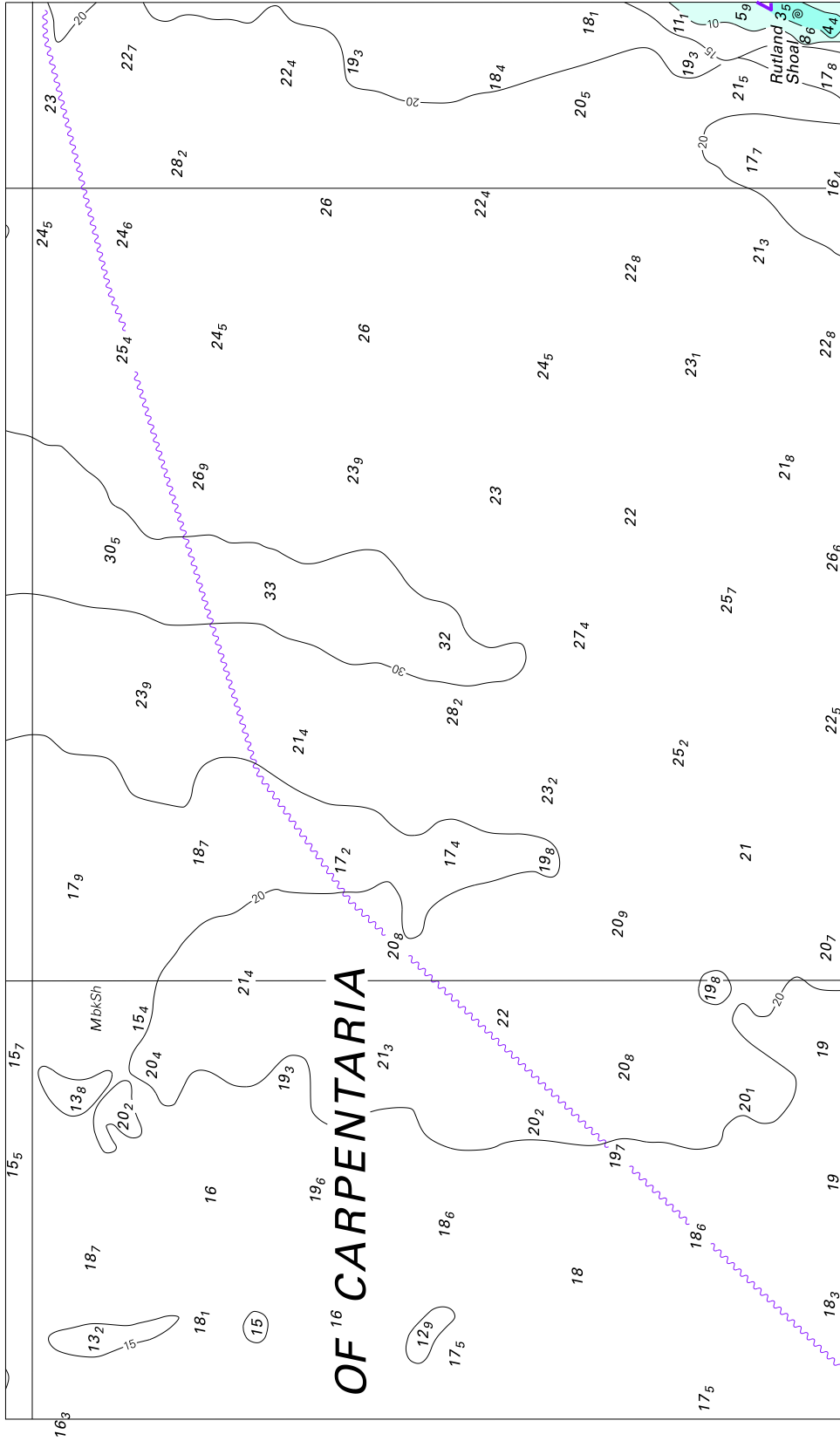
To accompany Australian Notice to Mariners 903/2010



© Commonwealth of Australia 2010
Block for Aus 387 (60.9 x 75.9mm)



To accompany Australian Notice to Mariners 905/2010

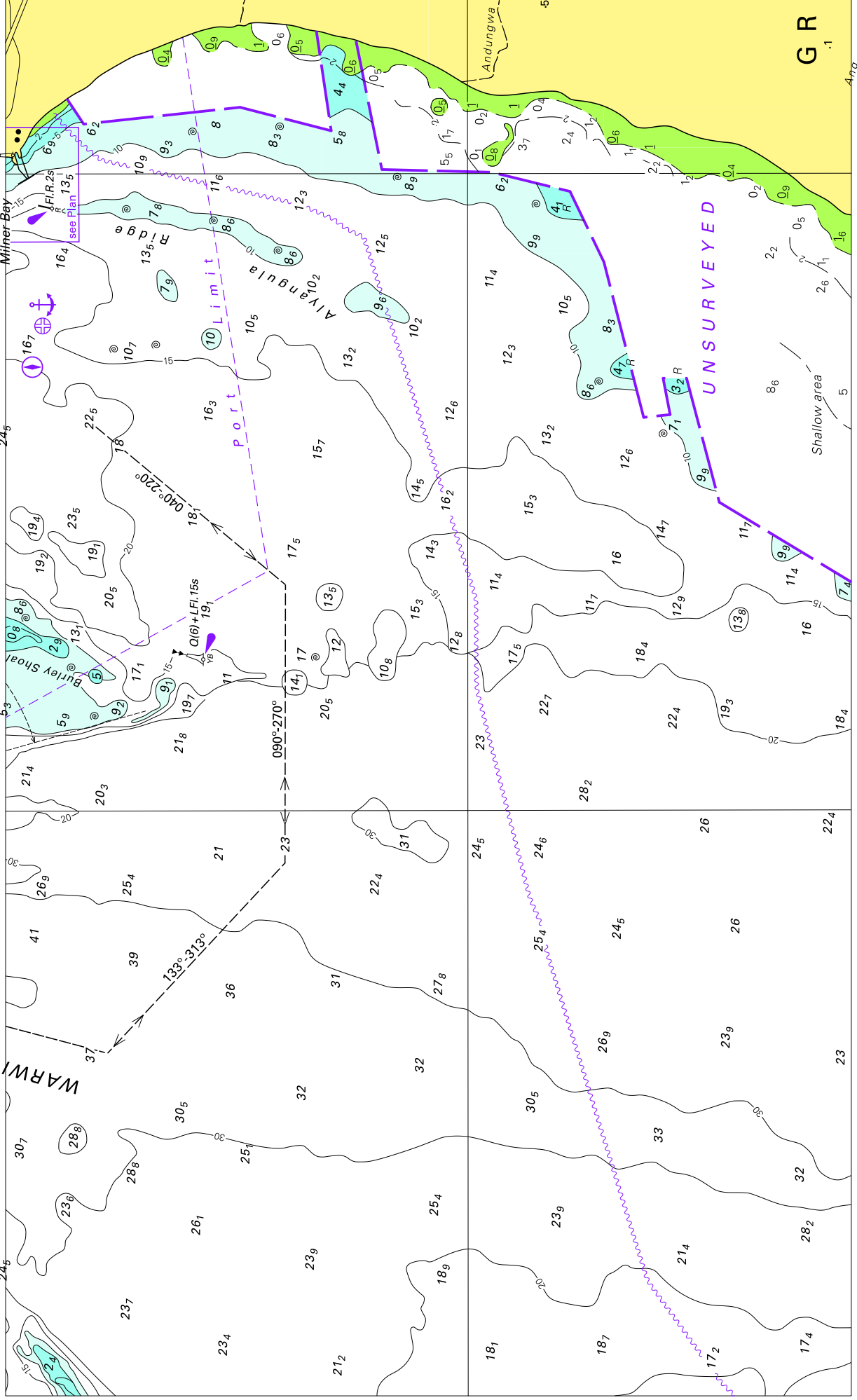


(214.8 x 127.2mm)

© Commonwealth of Australia 2010

Block for chart Aus 13

To accompany Australian Notice to Mariners 905/2010



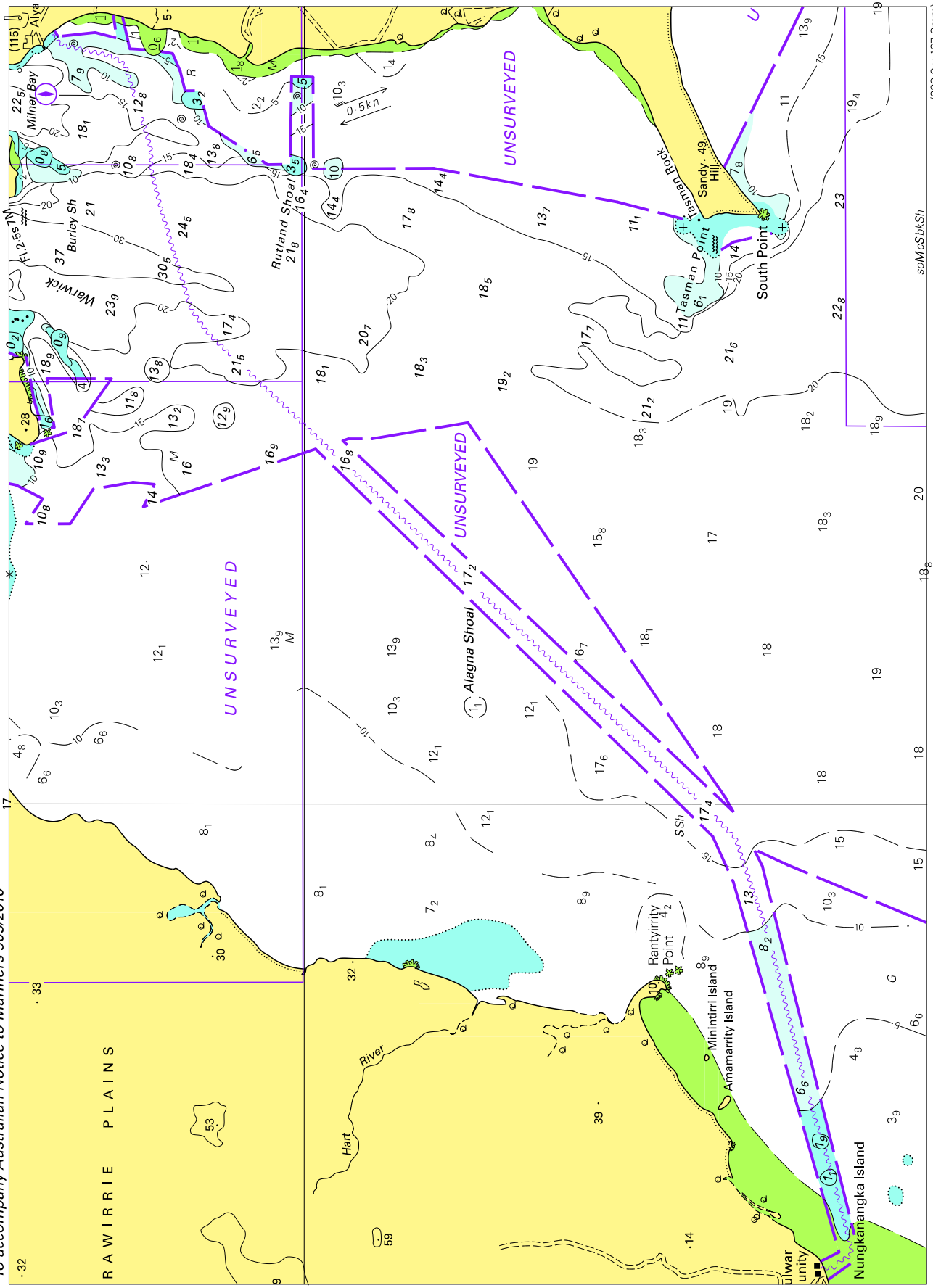
© Commonwealth of Australia 2010

Block for chart Aus 14

(263.6 x 159.6mm)

GRO .1

To accompany Australian Notice to Mariners 905/2010



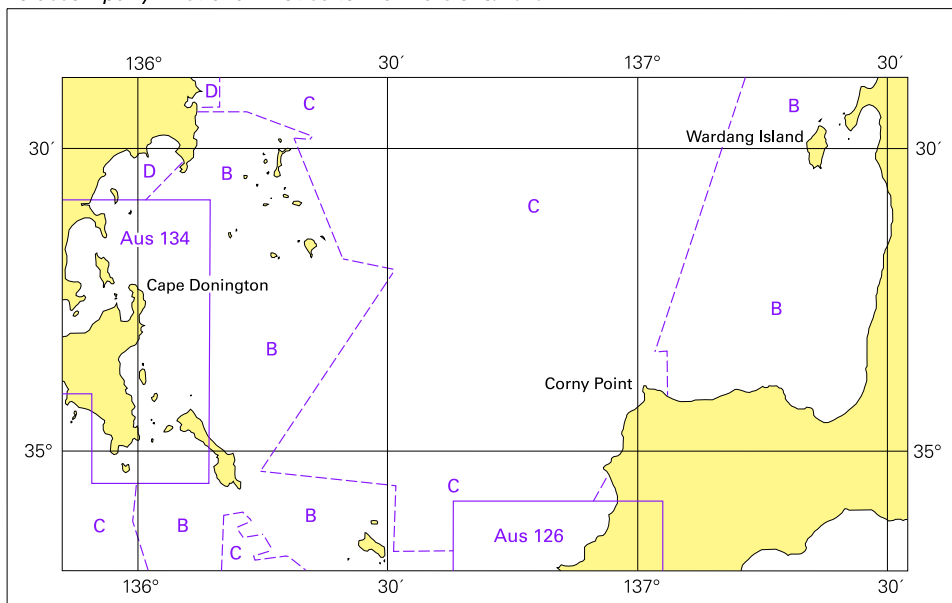
Block for chart Aus 305

© Commonwealth of Australia 2010

soMcSbkSh

(233.0 x 167.3mm)

To accompany Australian Notice to Mariners 913/2010



Block for Aus 776

© Commonwealth of Australia 2010

(126.4 x 79.5mm)