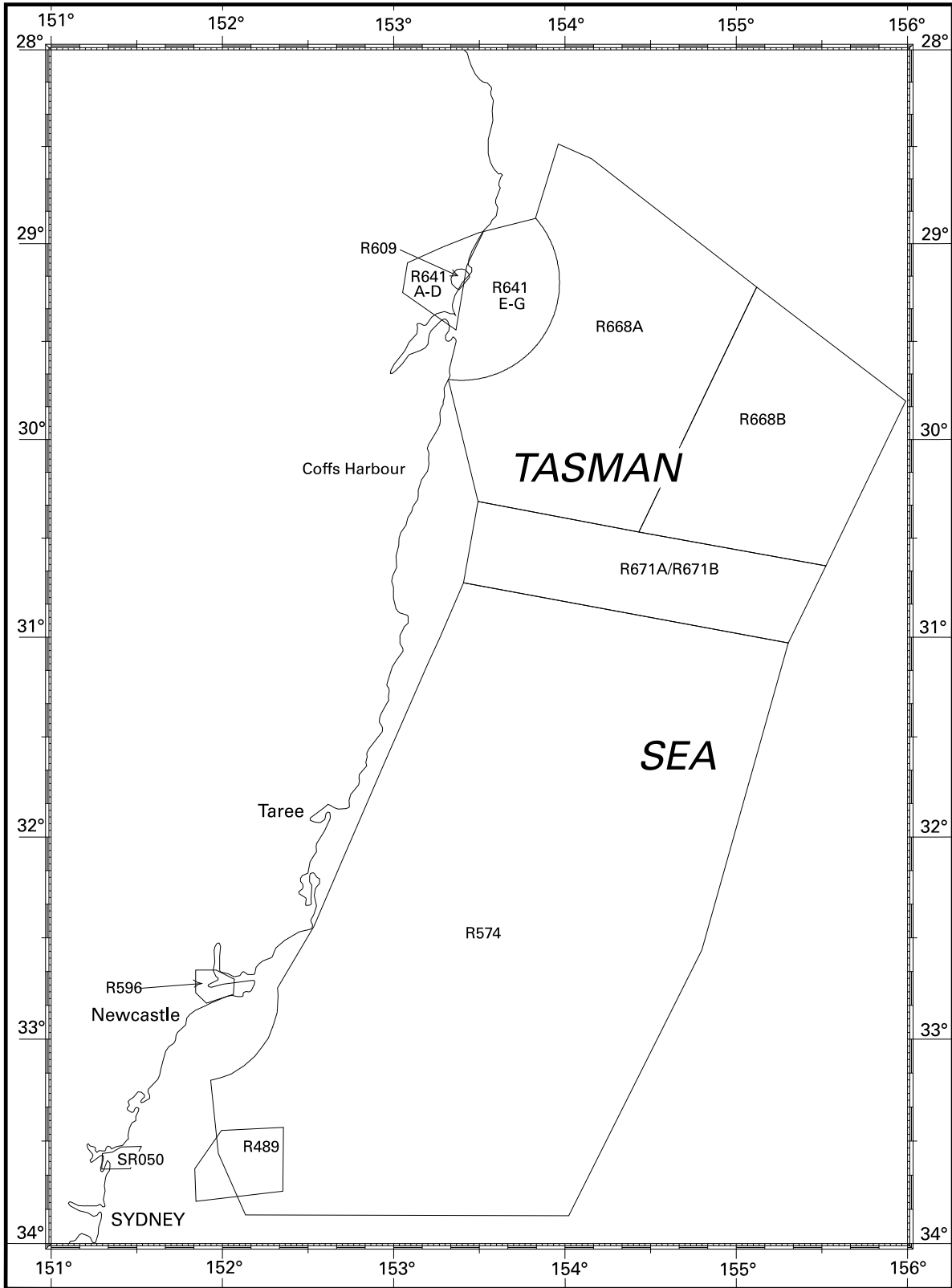
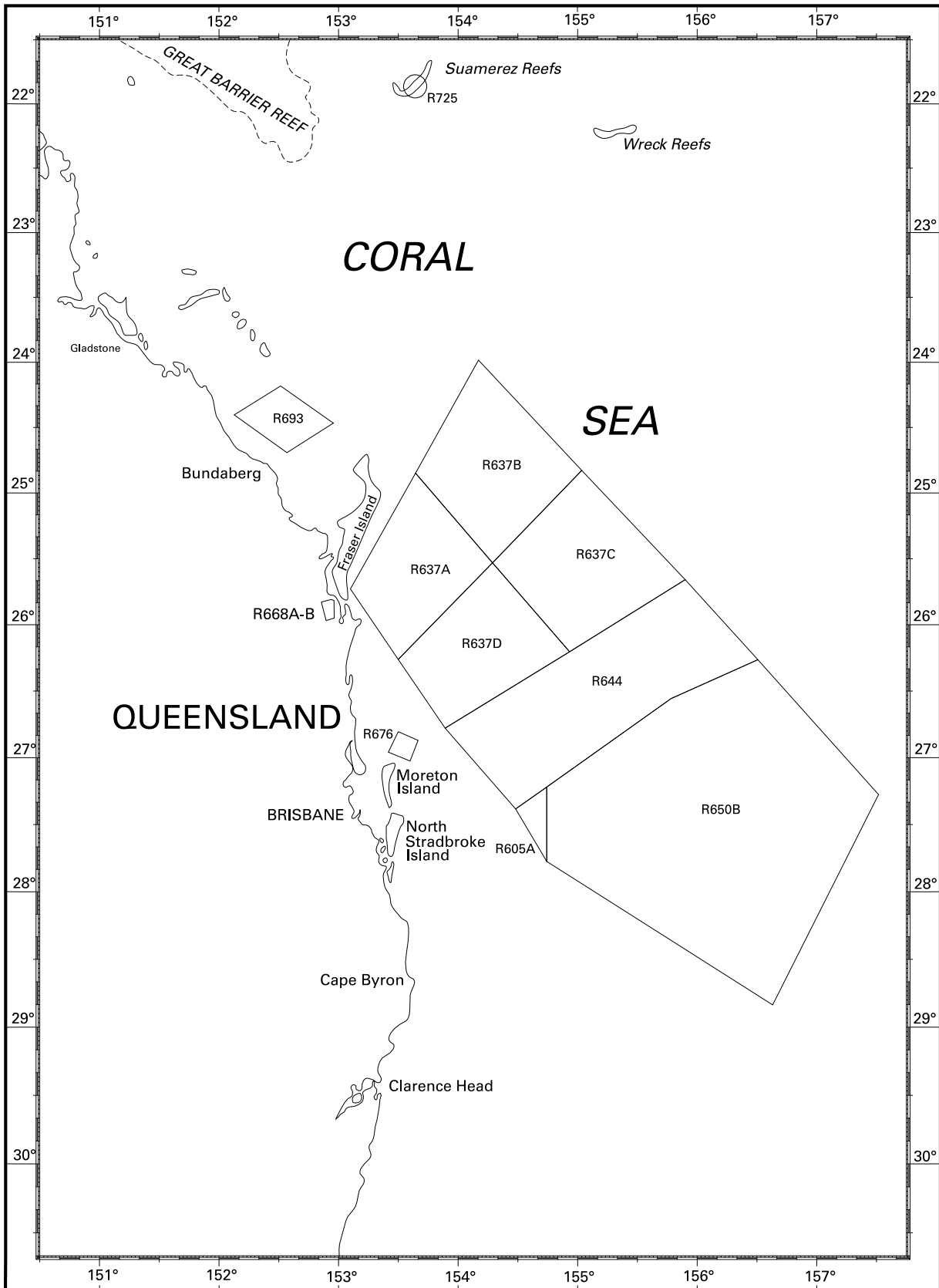


Tasman Sea – Newcastle



Queensland South – Coral Sea



To accompany Australian Notice to Mariners 698/2010

HISTORIC WRECK

The site of an historic wreck is protected from unauthorised interference. For details see Australian Seafarers Handbook AHP 20.

Note for chart Aus 747.

To accompany Australian Notice to Mariners 698/2010

HISTORIC WRECK

The site of an historic wreck is protected from unauthorised interference. For details see Australian Seafarers Handbook AHP 20.

Note for chart Aus 748.

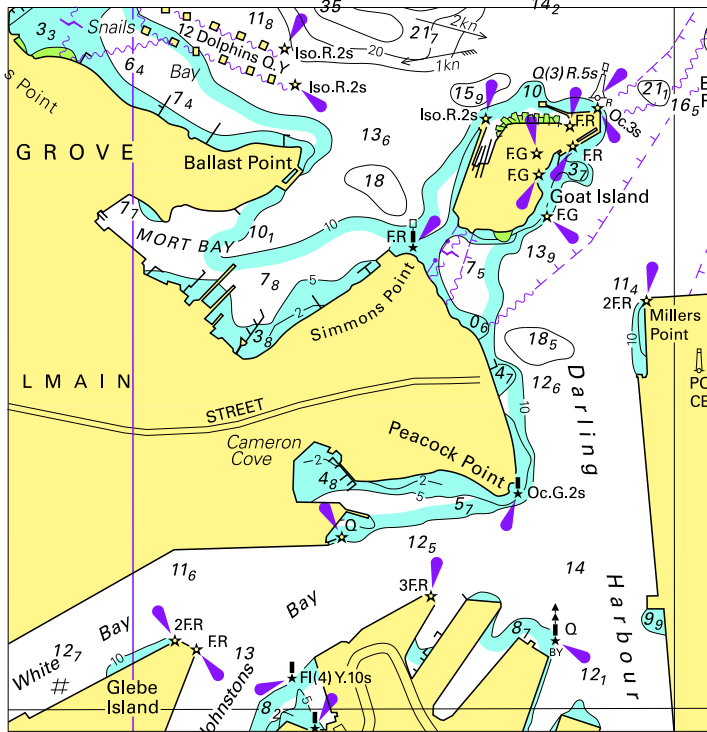
To accompany Australian Notice to Mariners 698/2010

HISTORIC WRECK

The site of an historic wreck is protected from unauthorised interference. For details see Australian Seafarers Handbook AHP 20.

Note for chart Aus 749.

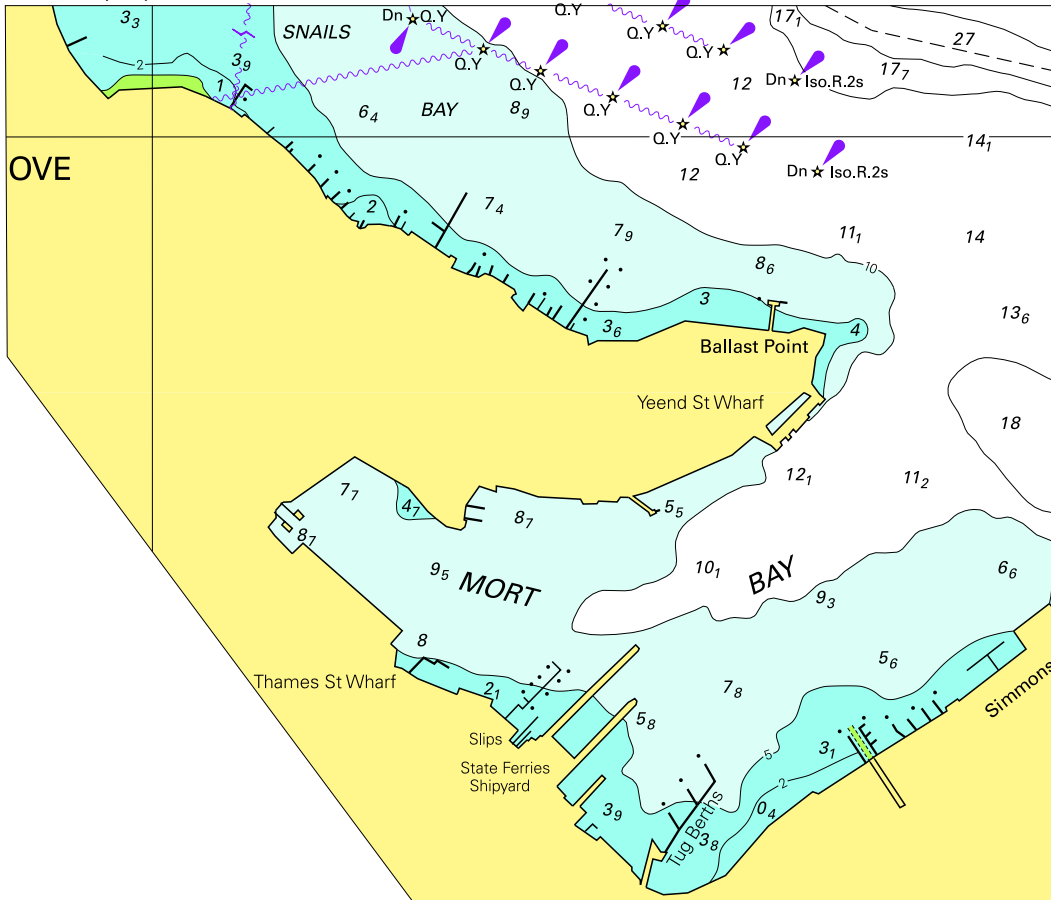
To accompany Australian Notice to Mariners 691/2010



© Commonwealth of Australia 2010 (93.0 x 95.7mm)

Block for chart Aus 200

To accompany Australian Notice to Mariners 691/2010

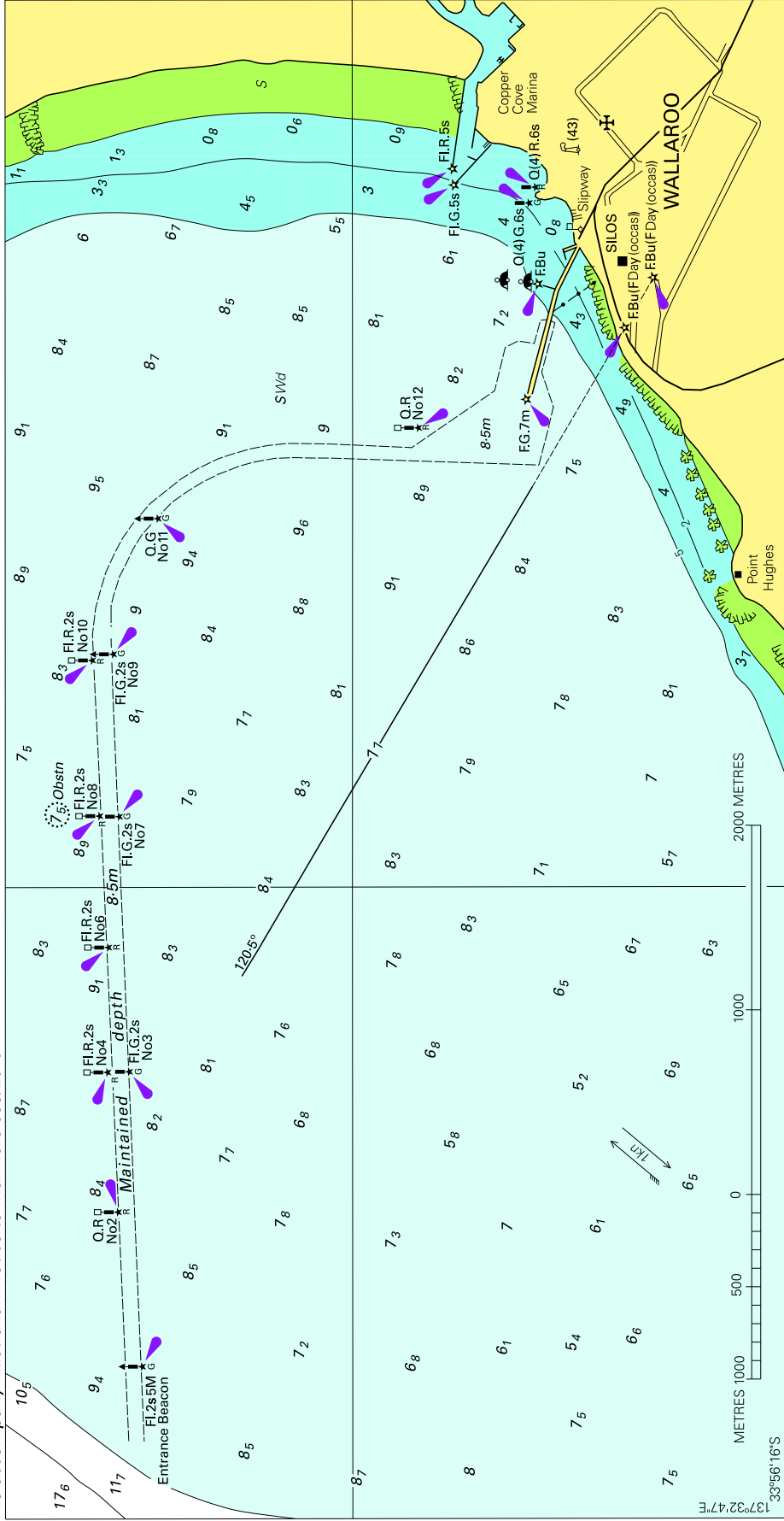


Block for chart Aus 202

© Commonwealth of Australia 2010

(139-0 x 118-5mm)

To accompany Australian Notice to Mariners 699/2010

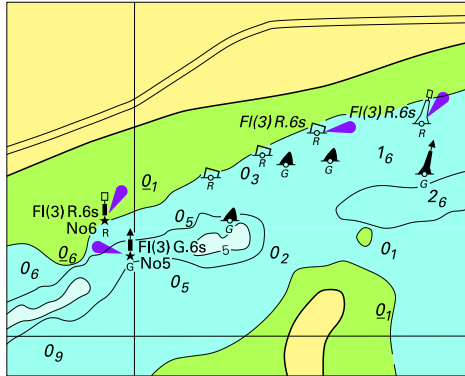


Block for chart Aus 777

© Commonwealth of Australia 2010

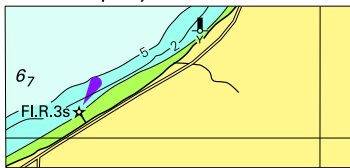
(235.0 x 121.0mm)

To accompany Australian Notice to Mariners 705/2010



© Commonwealth of Australia 2010
Block for chart Aus 153 (61.9 x 49.4mm)

To accompany Australian Notice to Mariners 706/2010



© Commonwealth of Australia 2010
Block for chart Aus 143 (46.3 x 21.3mm)