

*To accompany Australian Notice to Mariners 586/2010*

MILITARY EXERCISE AREA

Military operations are conducted within the area of this chart. For area limits and details see Australian Notice to Mariners No 9.

*Note for chart Aus 811.*

*To accompany Australian Notice to Mariners 594/2010*

TIDAL STREAMS - SUNDAY STRAIT

Tidal streams exceeding 10 knots have been reported in the Sunday Strait area. Extensive overfalls and eddies exist at spring tides. For details see Australia Pilot Vol I NP13.

*Note for chart Aus 732.*

*To accompany Australian Notice to Mariners 594/2010*

TIDAL STREAMS - SUNDAY STRAIT

Tidal streams exceeding 10 knots have been reported in the Sunday Strait area. Extensive overfalls and eddies exist at spring tides. For details see Australia Pilot Vol I NP13.

*Note for chart Aus 733.*

*To accompany Australian Notice to Mariners 595/2010*

HISTORIC WRECK

The site of an historic wreck is protected from unauthorised interference. For details see Australian Seafarers Handbook AHP 20.

*Note for chart Aus 741.*

*To accompany Australian Notice to Mariners 595/2010*

MILITARY EXERCISE AREA

Military operations are conducted within the area of this chart. For area limits and details see Australian Notice to Mariners No 9.

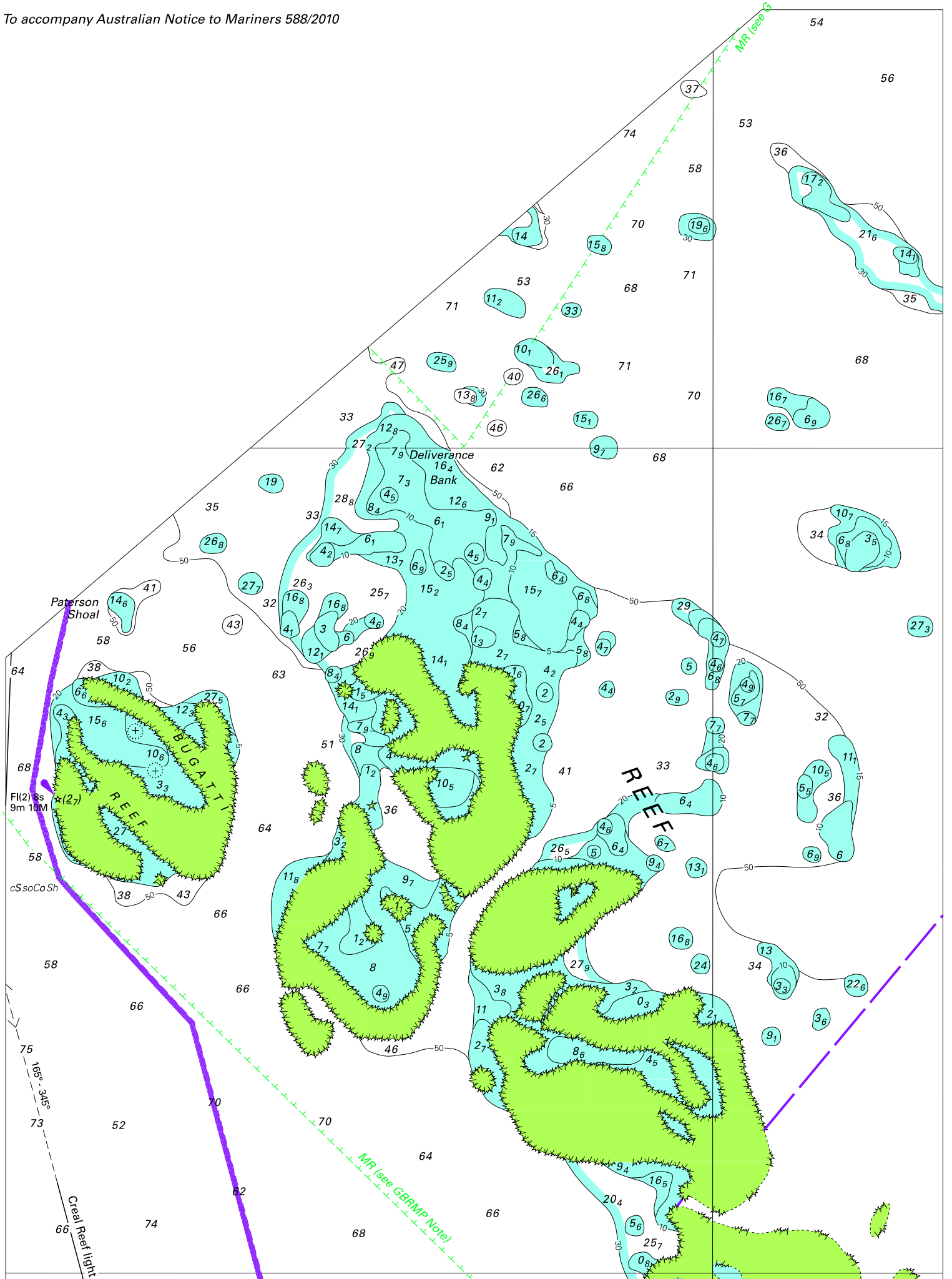
*Note for chart Aus 742.*

*To accompany Australian Notice to Mariners 595/2010*

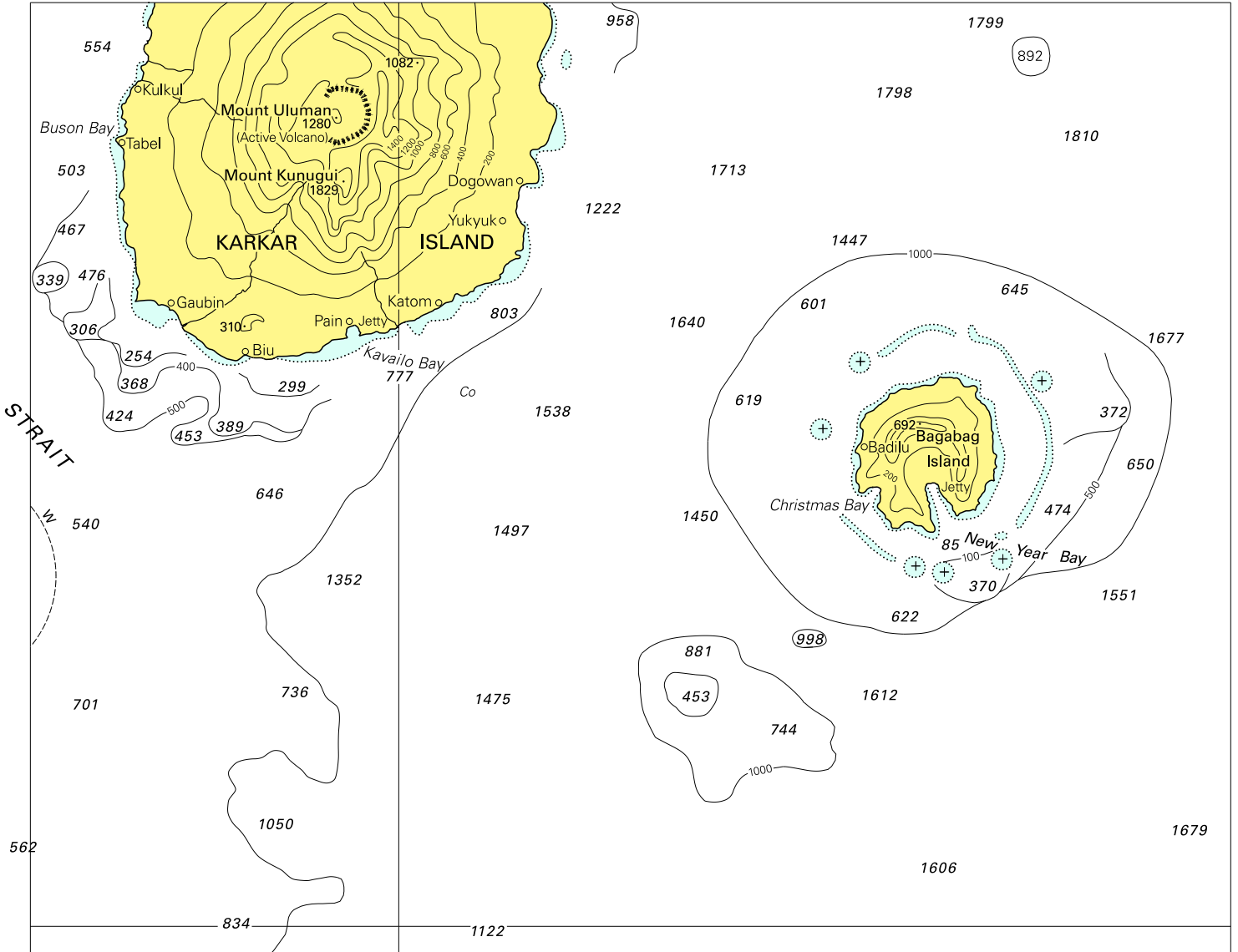
CAUTIONARY AREA

Vessels are to avoid navigating, anchoring or fishing within this area.

*Note for chart Aus 742.*



To accompany Australian Notice to Mariners 589/2010

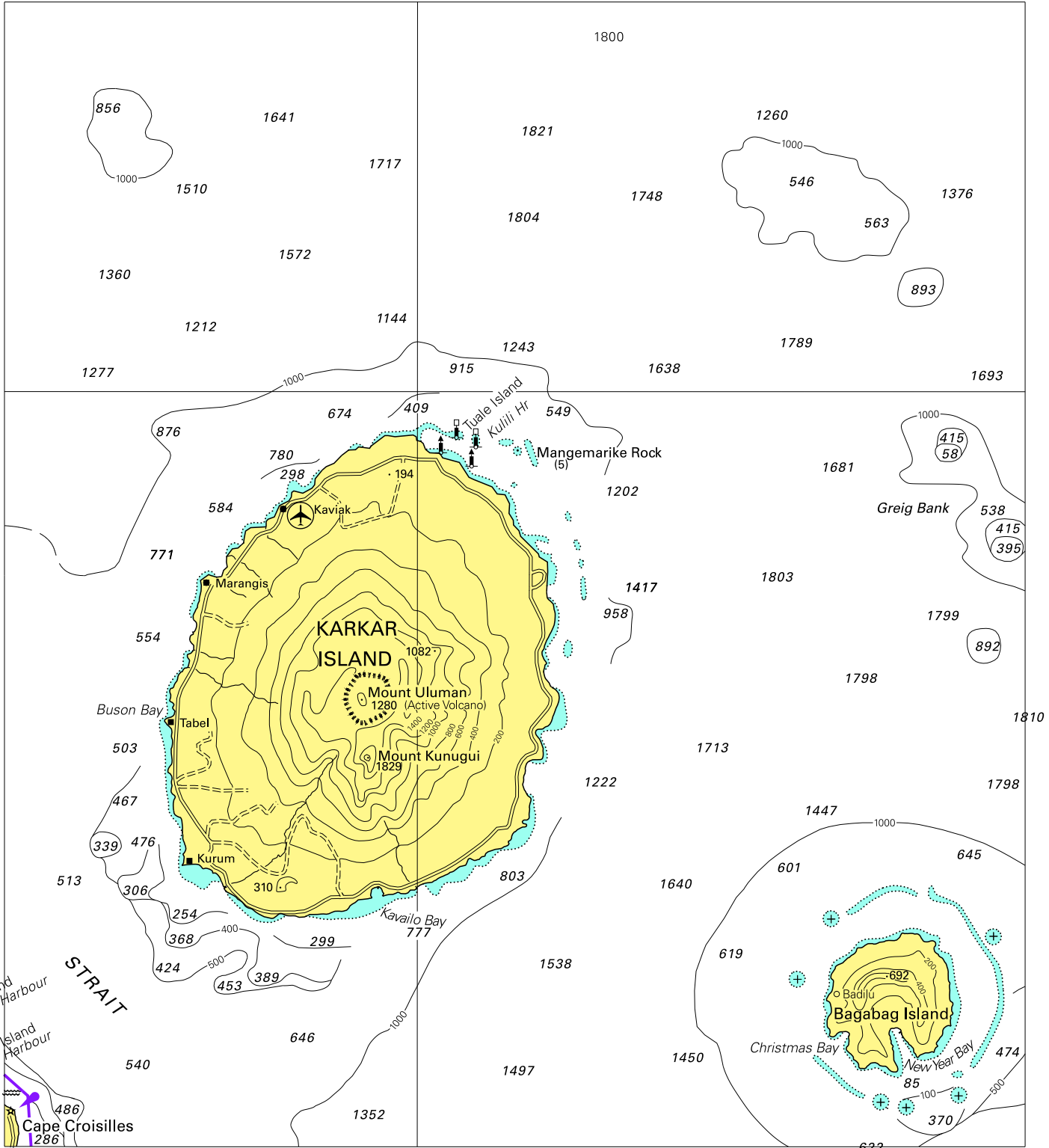


Block for chart Aus 387

© Commonwealth of Australia 2010

(190.1 x 150.5mm)

To accompany Australian Notice to Mariners 589/2010



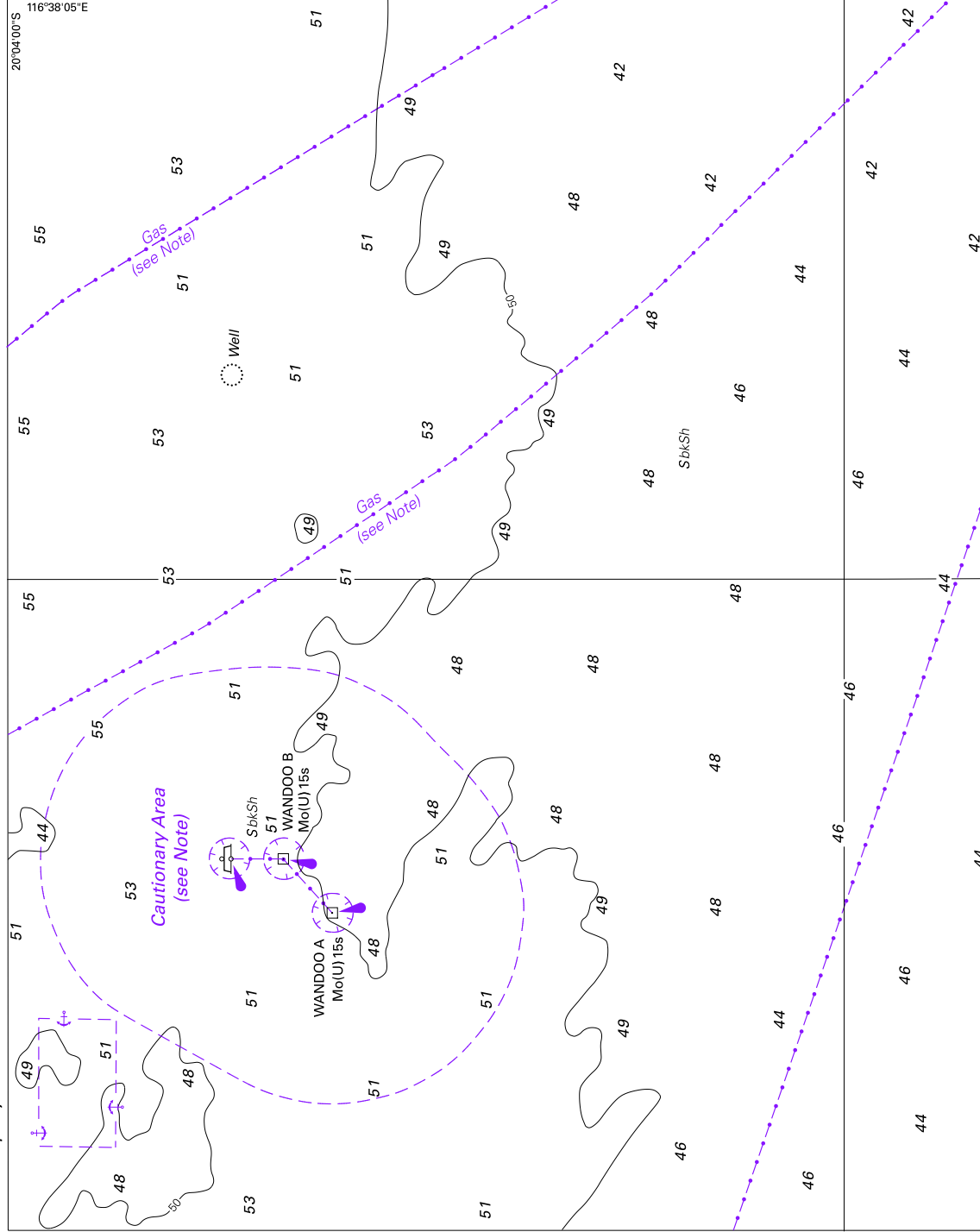
Block for chart Aus 388

© Commonwealth of Australia 2010

(202.4 x 180.6)



To accompany Australian Notice to Mariners 595/2010

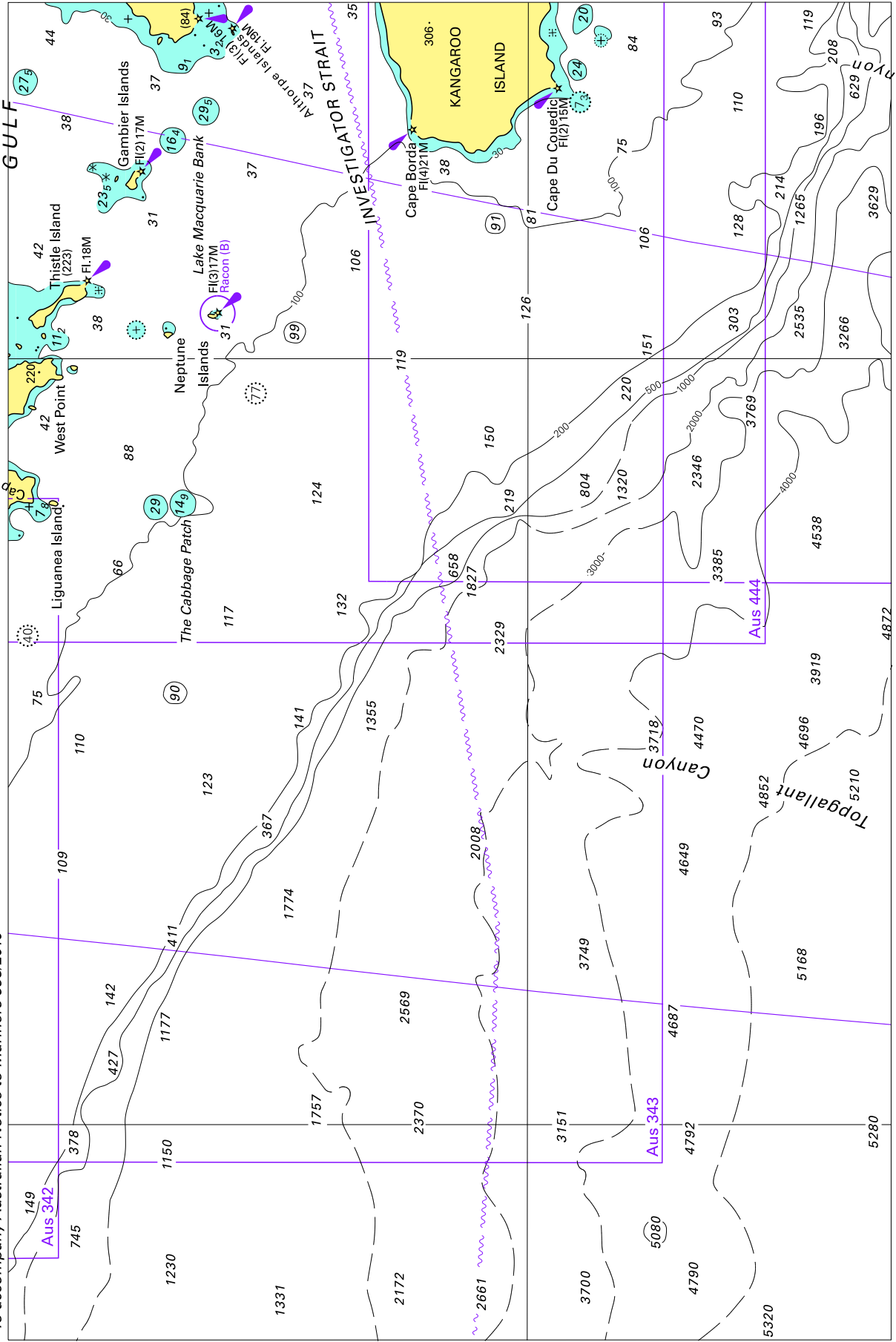


Block for chart Aus 742

© Commonwealth of Australia 2010

(188.7 x 149.9mm)

To accompany Australian Notice to Mariners 598/2010



Block for chart Aus 4727

© Commonwealth of Australia 2010

(238.5 x 157.4mm)