

| | |
|------------|-----------------------------------|
| Telephone: | +61 8 9216 8999 |
| email: | marine.safety@transport.wa.gov.au |
| Website: | www.transport.wa.gov.au/imarine |

AHP20 - Page 32

| | |
|----------|-----------------------------------|
| Website: | www.environment.gov.au/coasts/mpa |
|----------|-----------------------------------|

AHP20 - Page 78

| | |
|----------|------------------------------|
| Website: | www.environment.gov.au/parks |
|----------|------------------------------|

AHP20 - Page 79

| | |
|--|-------------------------------|
| QUEENSLAND | |
| Business Information Centre for Queensland Primary Industries and Fisheries | |
| Phone: | 13 25 23 +61 7 3404 6999 |
| email: | callweb@dpi.qld.gov.au |
| Website: | www.dpi.qld.gov.au |
| Department of Environment and Resource Management | |
| Phone: | 1300 130 372 (Australia only) |
| email: | info@derm.qld.gov.au |
| Website: | www.derm.qld.gov.au |

AHP20 - Page 91

| | |
|----------------------------|--------------------|
| AMSA's website: | www.amsa.gov.au |
| Seacare Authority website: | www.seacare.gov.au |

AHP20 - Page 199

| | |
|---|---|
| Air Services Australia website: | www.airservicesaustralia.com |
| Maritime Safety Queensland website: | www.msq.qld.gov.au/Notices-to-Mariners.aspx |
| Shoalwater Bay Training Area Range Control | |
| Telephone: | +61 7 4935 5000 |
| Facsimile: | +61 7 4935 5024 |
| email: | shoalwater.bay@defence.gov.au |

AHP20 - Page 215

| | |
|--|-----------------------------|
| Brisbane | |
| Telephone: | +61 7 3860 3500 |
| Fax: | +61 7 3860 3571 |
| email: | RHMBrisbane@msq.qld.gov.au |
| Gladstone / Bundaberg / Port Alma | |
| Telephone: | +61 7 4973 1200 |
| Fax: | +61 7 4972 5520 |
| email: | RHMGladstone@msq.qld.gov.au |

AHP20 - Page 225

| | |
|---|------------------------------|
| Mackay / Hay Point | |
| Telephone: | +61 7 4944 3700 |
| Fax: | +61 7 4944 3790 |
| email: | mackaymarine@msq.qld.gov.au |
| Townsville / Abbot Point / Lucinda | |
| Telephone: | +61 7 4726 3400 |
| Fax: | +61 7 4721 2028 |
| email: | RHMTownsville@msq.qld.gov.au |
| Cairns / Weipa | |
| Telephone: | +61 7 4052 7400 |
| Fax: | +61 7 4035 1127 |
| email: | RHMCairns@msq.qld.gov.au |
| Gold Coast | |
| Telephone: | +61 7 5539 7300 |
| Fax: | +61 7 5539 7388 |
| Email: | msqmail@msq.qld.gov.au |

AHP20 - Page 225

| | |
|----------------------------|---------------------------------|
| Website: | www.regionalchannels.vic.gov.au |
| Harbour Control Telephone: | +61 3 5247 0300 |

AHP20 - Page 228

| | | | | | | | |
|--------------------|--------|---------|---------|---|---|------------------------|---|
| Eden (Twofold Bay) | 37°04' | 149°54' | AUS 192 | Y | Y | NSW Maritime Authority | www.eden.nsw.gov.au edenpilot@maritime.nsw.gov.au +61 2 6496 1717 |
| | | | | Y | | | |

AHP20 - Page 227

| | | | | | | | |
|---------|--------|---------|---------|---|---|----------------------|--|
| Geelong | 38°06' | 144°22' | AUS 157 | Y | Y | Geelong Port Pty Ltd | www.geelongport.com.au m.controller@patrick.com.au +61 3 5247 0300 |
| | | | | Y | | | |

AHP20 - Page 229

| | | | | | | | |
|---|--------|---------|---------|----------------|---|-----------------|---|
| Port Welshpool (Corner Inlet & Port Albert) | 38°42' | 146°28' | AUS 182 | Y ¹ | N | Gippsland Ports | www.gippslandports.vic.gov.au ceo@gippslandports.vic.gov.au +61 3 5688 1303 |
| | | | | N | | | |

AHP20 - Page 229

| | | | | | | | |
|------------------------------|--------|---------|---------|---|---|--|---|
| King Island (Grassy Harbour) | 40°04' | 144°03' | AUS 178 | N | Y | Tasmanian Ports Corporation (King Island Ports Corp) | www.tasports.com.au reception@kiport.com.au +61 3 6461 1155 |
| | | | | N | | | |

AHP20 - Page 230

| | | | | | | | |
|-----------|--------|---------|---------|----------------|---|-------------|--|
| Ardrossan | 34°26' | 137°55' | AUS 139 | Y ¹ | Y | Viterra Ltd | www.viterra.com.au viterra.aus@viterra.com +61 8 8211 7199 1800 018 205 |
| | | | | Y | | | |

AHP20 - Page 231

| | | | | | | | |
|-------------|--------|---------|---------|----------------|---|----------------------|---|
| Cape Cuvier | 24°13' | 113°24' | AUS 330 | Y ³ | Y | Dampier Salt Pty Ltd | www.dampiersalt.com.au +61 8 9942 6003 |
| | | | | N | | | |

AHP20 - Page 232

| | | | | | | | |
|---------------|--------|---------|--------|---|---|-----------------------|---|
| Koolan Island | 16°07' | 123°44' | Aus 41 | N | Y | Mount Gibson Iron Ltd | www.mtgibsoniron.com.au admin@mtgibsoniron.com.au +61 8 9423 0862 |
| | | | | N | | | |

AHP20 - Page 233

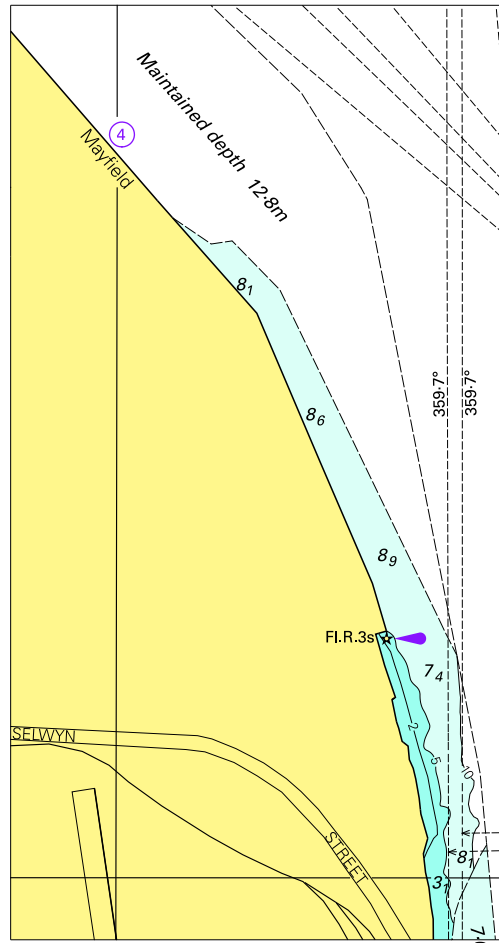
| | | | | | | | |
|------------------|--------|---------|--------|---|---|----------------------------------|---|
| Thevenard Island | 21°27' | 115°00' | AUS 64 | N | Y | Chevron Texaco Australia Pty Ltd | www.chevron.com ask@chevron.com +61 8 9216 4000 |
| | | | | N | | | |

AHP20 - Page 233

| | | | | | | | |
|---------|--------|---------|--------|----------------|---|------------------------|---|
| Wyndham | 15°27' | 128°06' | AUS 32 | Y ³ | Y | Cambridge Gulf Limited | hmordport@westnet.com.au +61 8 9161 1203 |
| | | | | Y | | | |

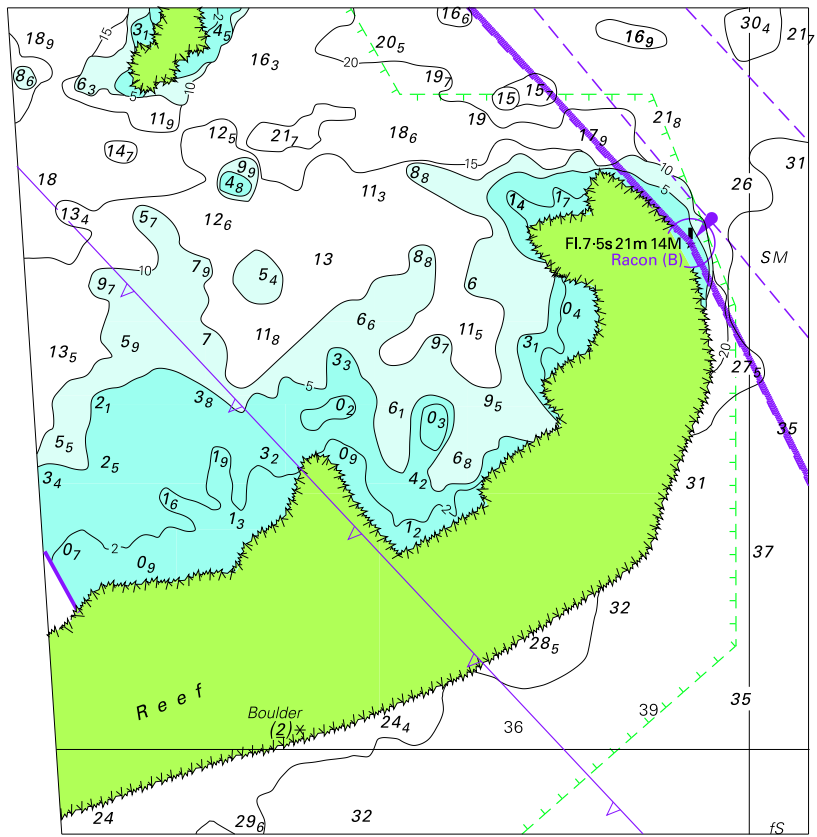
AHP20 - Page 233

To accompany Australian Notice to Mariners 536/2010



© Commonwealth of Australia 2010
Block for chart Aus 208 (65.1 x 123.6mm)

To accompany Australian Notice to Mariners 541/2010

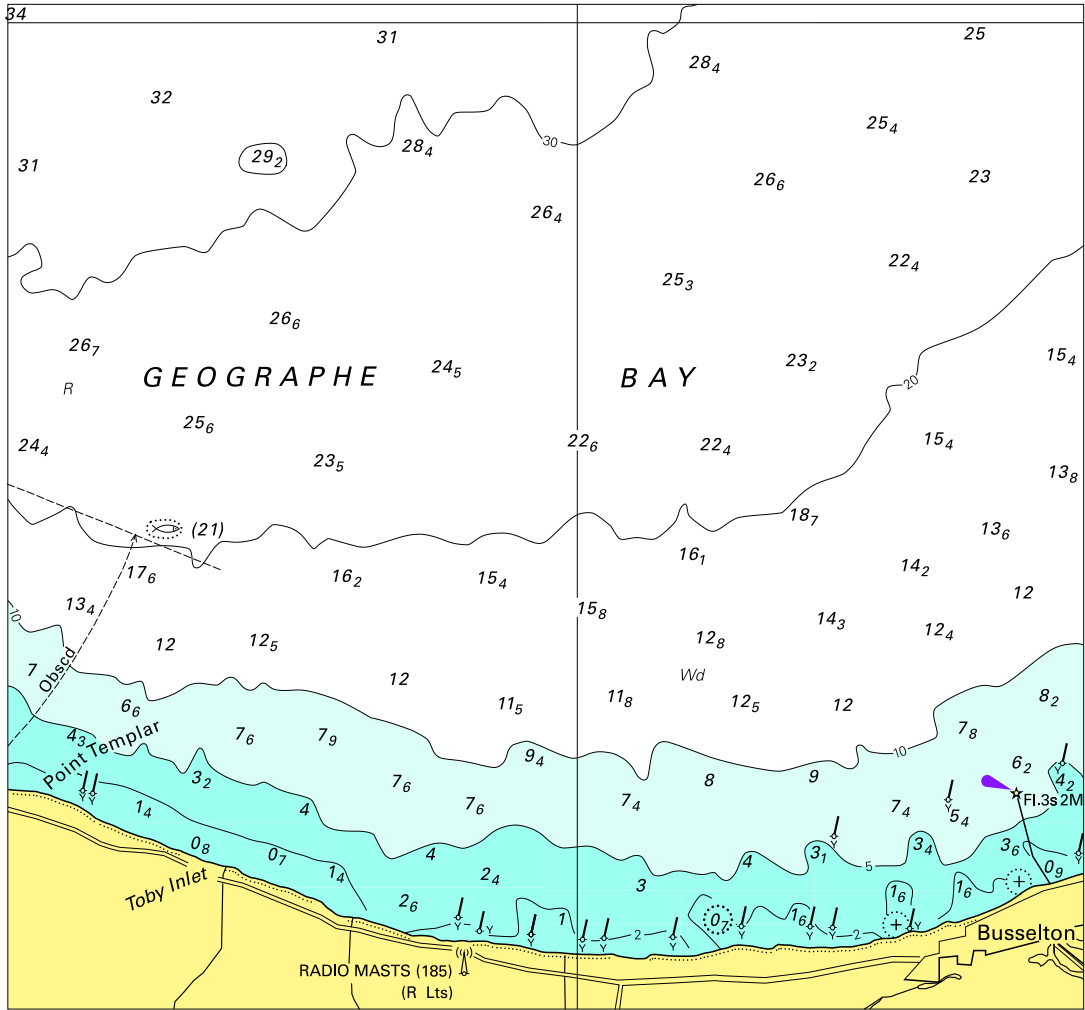


© Commonwealth of Australia 2010

(106.0 x 109.3)

Block for chart Aus 833

To accompany Australian Notice to Mariners 548/2010

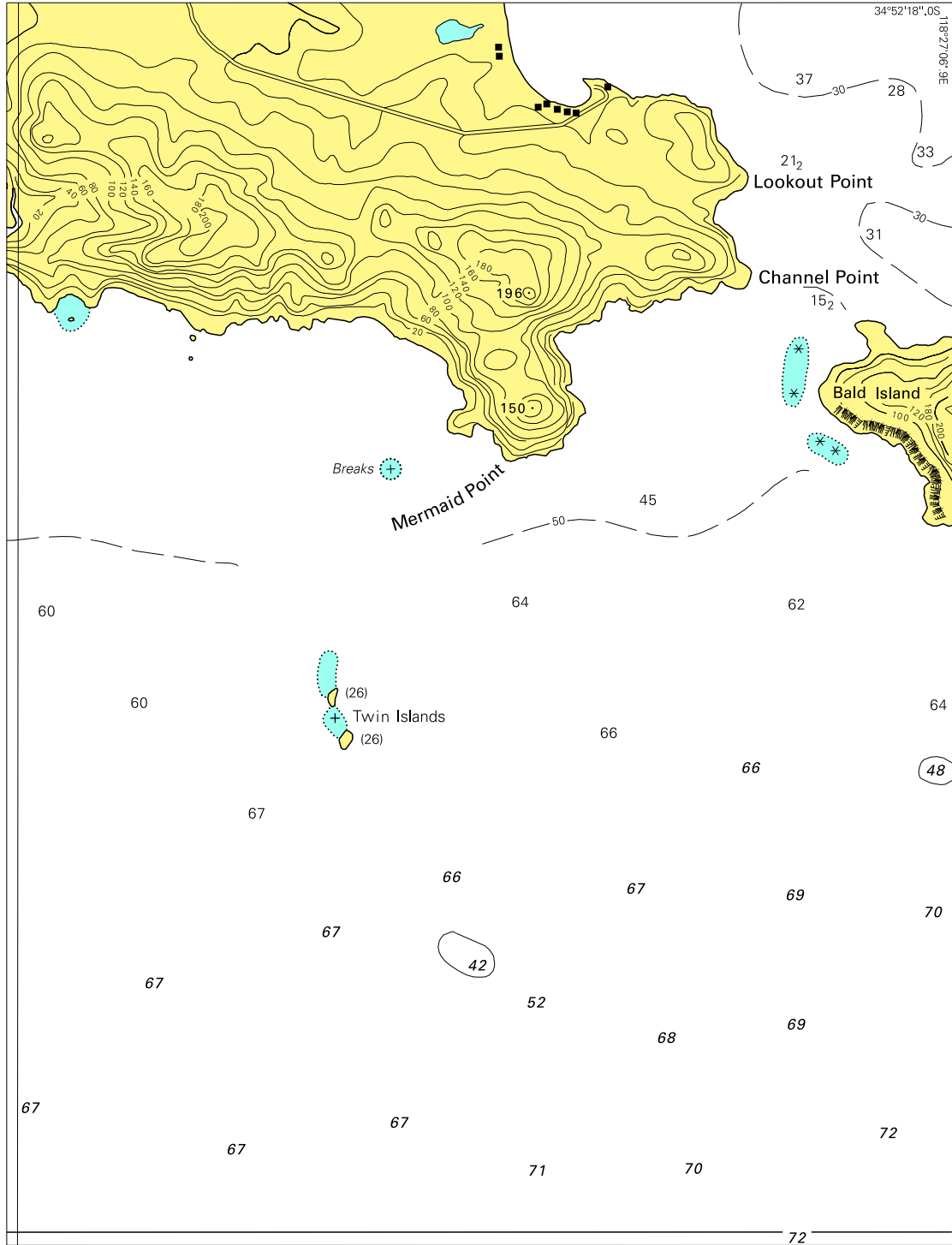


Block for chart Aus 756

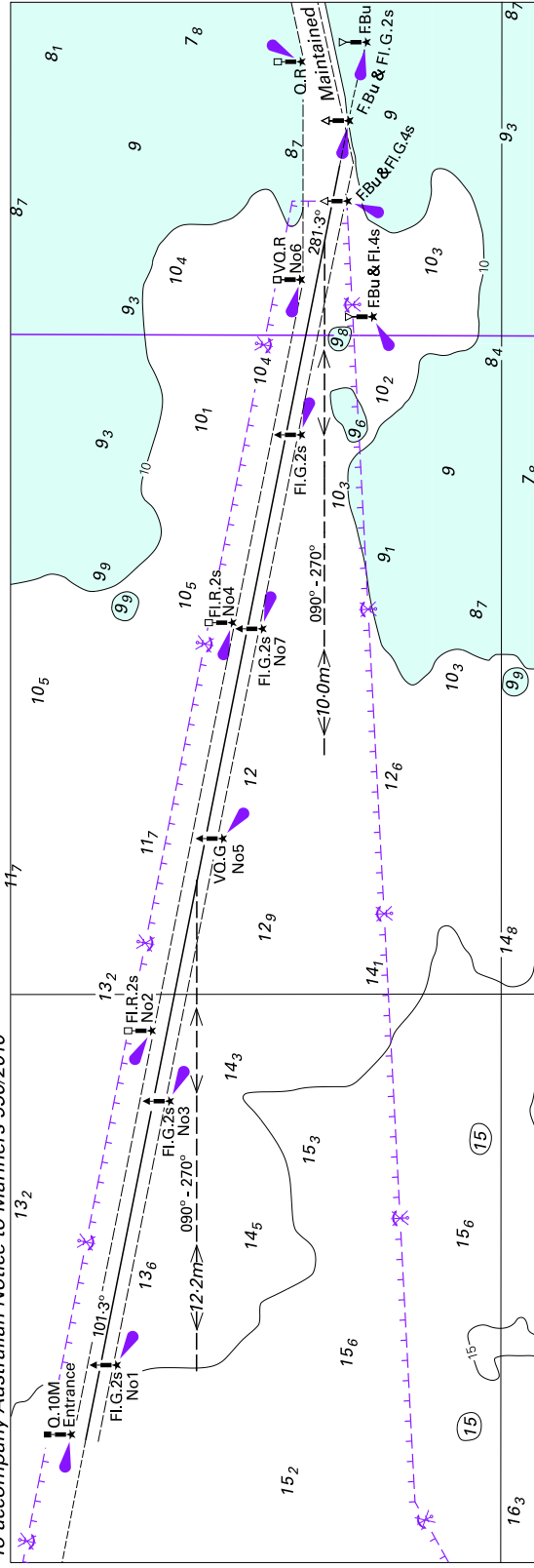
© Commonwealth of Australia 2010

(142.3 x 132.9mm)

To accompany Australia Notice to Mariners 549/2010



To accompany Australian Notice to Mariners 550/2010

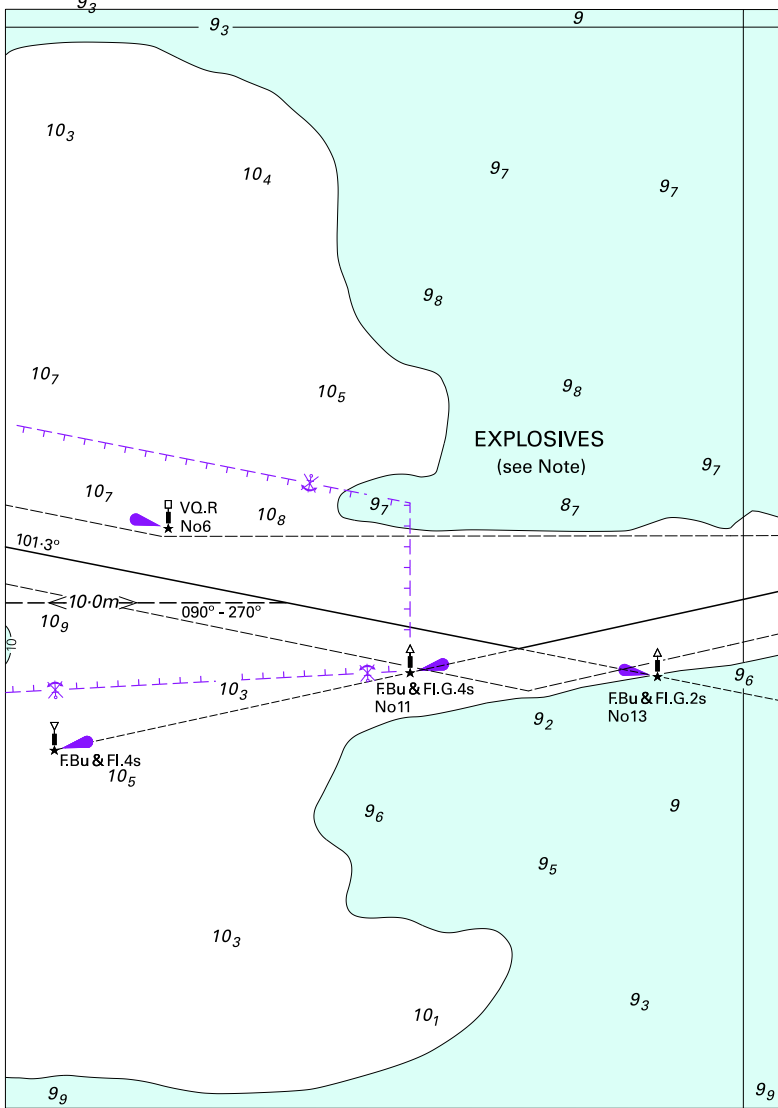


Block for chart Aus 130

© Commonwealth of Australia 2010

(211.6 x 71.8mm)

To accompany Australian Notice to Mariners 550/2010



Block for chart Aus 137 © Commonwealth of Australia 2010

(102.9 x 145.5mm)

