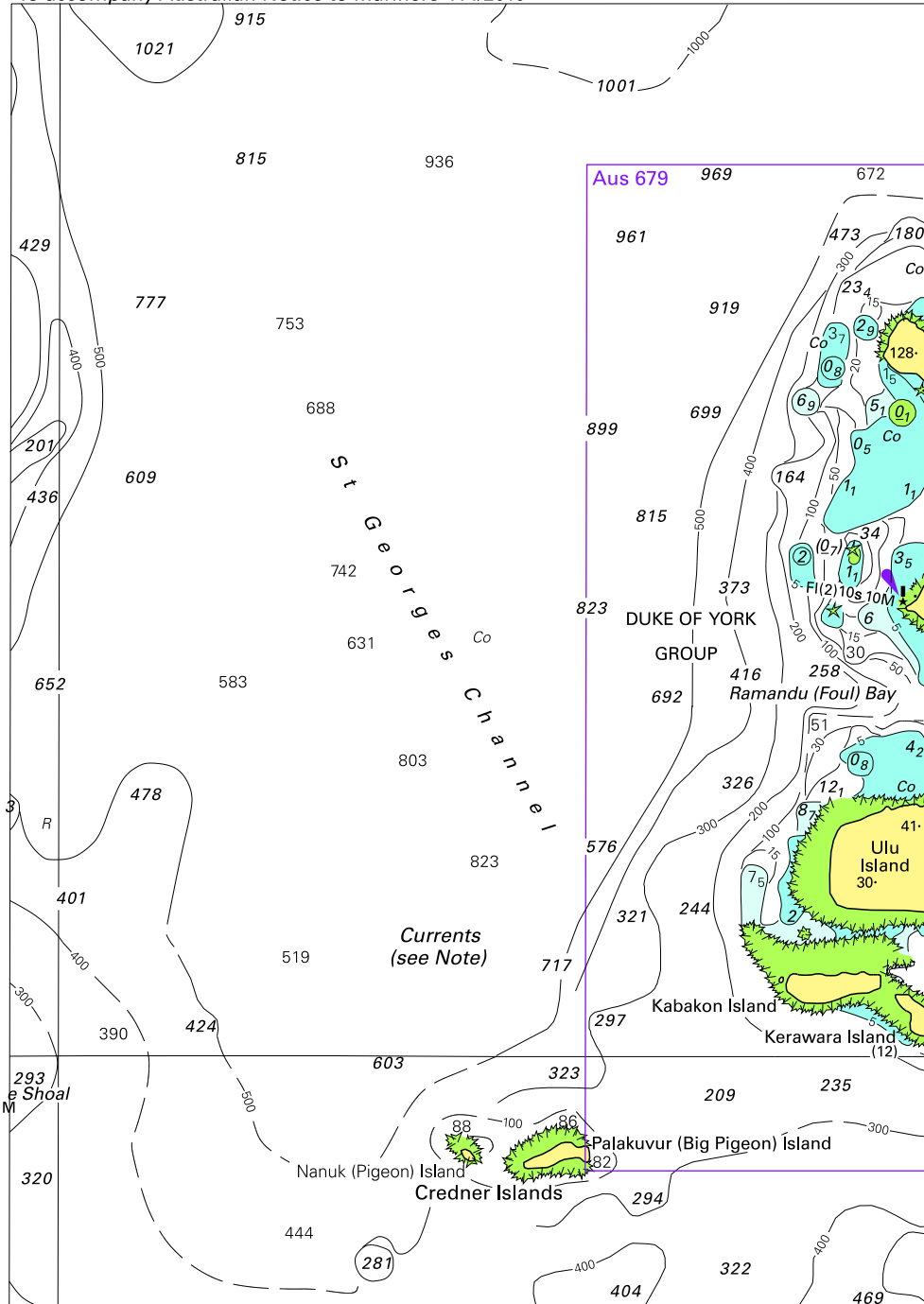


To accompany Australian Notice to Mariners 414/2010

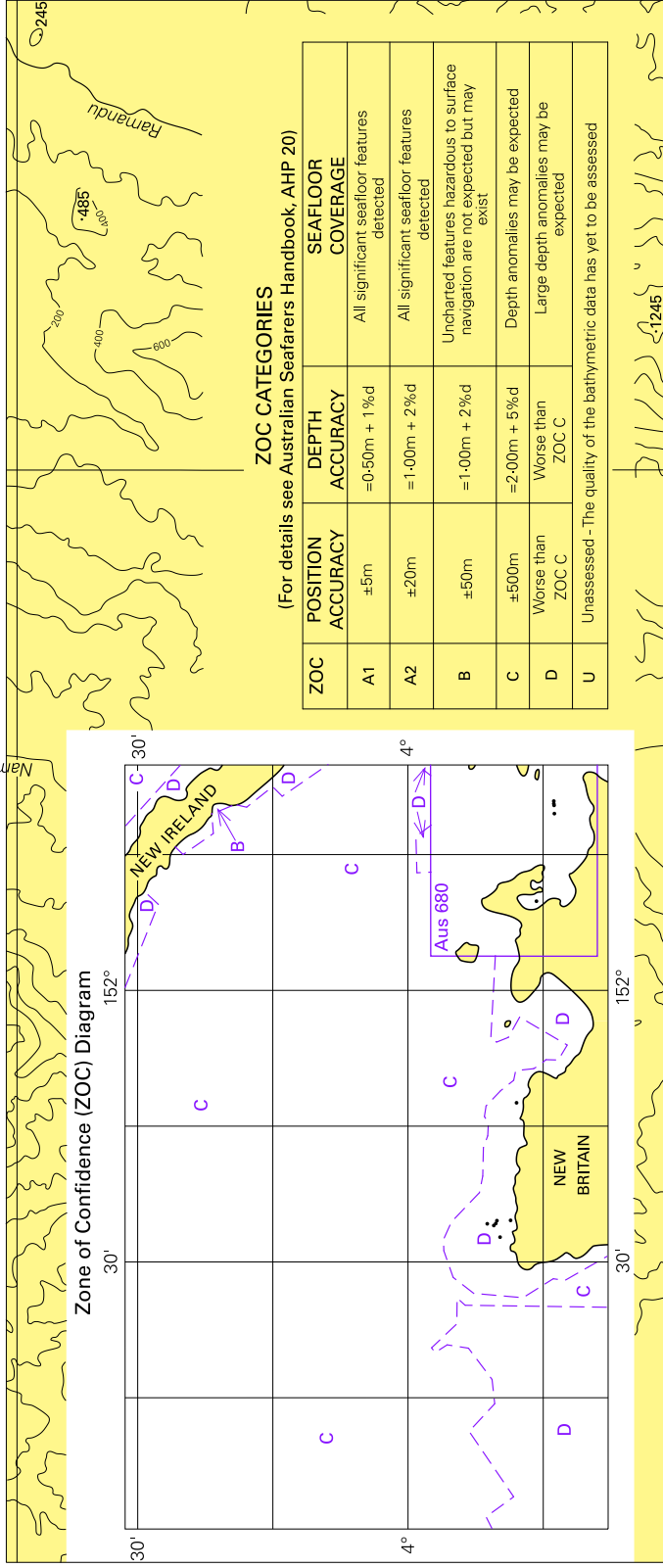


Block for chart Aus 545

© Commonwealth of Australia 2010

(128.1 x 182.0mm)

To accompany Australian Notice to Mariners 414/2010



**ZOC CATEGORIES**

(For details see Australian Seafarers Handbook, AHP 20)

ZOC	POSITION ACCURACY	DEPTH ACCURACY	SEAFLOOR COVERAGE
A1	±5m	±0.50m + 1% d	All significant seafloor features detected
A2	±20m	±1.00m + 2% d	All significant seafloor features detected
B	±50m	±1.00m + 2% d	Uncharted features hazardous to surface navigation are not expected but may exist
C	±500m	±2.00m + 5% d	Depth anomalies may be expected
D	Worse than ZOC C	Worse than ZOC C	Large depth anomalies may be expected
U	Unassessed	The quality of the bathymetric data has yet to be assessed	

Block B for chart Aus 545

© Commonwealth of Australia 2010

(210.9 x 89.3mm)