



Australian Notices to Mariners are the authority for correcting Australian Charts and Publications

# AUSTRALIAN NOTICES TO MARINERS

Notices 526 - 583 

Published fortnightly by the Australian Hydrographic Service

Commodore R. NAIRN RAN  
Hydrographer of Australia

- 
- SECTIONS.**
- I. **Australian Notices to Mariners, including blocks and notes.**
  - II. **Hydrographic Reports.**
  - III. **Navigational Warnings.**

For Notices affecting Admiralty List of Lights and Fog Signals; List of Radio Signals; and Sailing Directions see **British Notices to Mariners.**

---

*The substance of these notices should be inserted on the charts affected.*

*Bearings are referred to the true compass and are reckoned clockwise from North; those relating to lights are given as seen by an observer from seaward. Positions quoted in permanent notices relate to the horizontal datum for the chart(s). When preliminary or temporary notices affect multiple charts, positions will be provided in relation to only one horizontal datum and that datum will be specified. When the multiple charts do not have a common horizontal datum, mariners will be required to adjust the position(s) for those charts not on the specified datum. The range quoted for a light is its nominal range. Depths are with reference to the chart datum of each chart. Heights are above mean high water springs or mean higher high water, as appropriate.*

*The capital letter (P) or (T) after the number of any notice denotes a preliminary or temporary notice respectively, which are contained separately at the end of the permanent notices. A star (\*) adjacent to the number of a notice indicates that the notice is based on original information.*

---

**Mariners are particularly requested to notify the AUSTRALIAN HYDROGRAPHIC SERVICE, Locked Bag 8801 Wollongong, NSW 2500 (Fax 02-4223 6599, e-mail [Hydro.NTM@defence.gov.au](mailto:Hydro.NTM@defence.gov.au) or, alternatively by filling in and submitting the [Hydrographic Notes](#) forms located on the web site – [www.hydro.gov.au](http://www.hydro.gov.au)), immediately on the discovery of new dangers or suspected dangers to navigation. For changes or defects in aids to navigation notify AusSAR (Fax 02-6230 6868 or email [rccaus@amsa.gov.au](mailto:rccaus@amsa.gov.au)).**

---

Copies of Australian notices are available free of charge from the Australian Hydrographic Service (AHS) website ([www.hydro.gov.au](http://www.hydro.gov.au)) and through the eNotices (email) service ([www.hydro.gov.au/enotices/enotices.htm](http://www.hydro.gov.au/enotices/enotices.htm)).

Individual Notices may be copied for the purpose of inserting Notice substance on official charts and publications. Paper copies may be printed by chart agents and distributed to customers on a cost recovery basis. Participating chart agents are listed on the AHS website as providing a 'Paper Notices to Mariners' service ([www.hydro.gov.au/prodserv/distributors/distributors.htm](http://www.hydro.gov.au/prodserv/distributors/distributors.htm)). Copies of the notices may not be sold for profit without prior written agreement.

---

## IMPORTANT NOTICE

This edition of Notices to Mariners includes all significant information affecting AHS products which the AHS has become aware of since the last edition. All reasonable efforts have been made to ensure the accuracy and completeness of the information, including third party information, on which these updates are based. The AHS regards third parties from which it receives information as reliable, however the AHS cannot verify all such information and errors may therefore exist. The AHS does not accept liability for errors in third party information.

---

© Commonwealth of Australia 2009

This work is copyright. Apart from any use permitted under the Copyright Act 1968, no part may be reproduced by any process, adapted, communicated or commercially exploited without prior written permission from The Commonwealth represented by the Australian Hydrographic Service.

## NUMERICAL INDEX OF NOTICES TO MARINERS

### Edition No 9

Notices	Aus Chart, INT Chart, ENC Cell, AHP
526.....	Aus 157, 141, 222, 265, 822, AU303143, 303152, 304145, 304146, 304147, 304148, 5539P1
527.....	Amendment to Australian National Tide Tables 2009
528.....	Aus 191
529.....	Aus 191
530.....	Aus 200, 201, 202, AX 63200
531.....	Aus 200
532.....	Aus 221
533.....	Aus 235, 814
534.....	Aus 616
535.....	Aus 386, 387
536.....	Aus 683
537.....	Aus 393, 539, 543, 676
538.....	Aus 646
539.....	Aus 388, 462, 4622, INT 622
540.....	Aus 292, 293, 294
541.....	Aus 292, 293, 301, 376, 700
542.....	Aus 700
543.....	Aus 22, 309, AX 0309F, AX 72309
544.....	Aus 729
545.....	Aus 59
546.....	Aus 744
547.....	Aus 117, AX 70117
548.....	Aus 444, 4727, INT 727
549.....	Aus 778
550.....	Aus 345
551.....	Aus 163, 799
552.....	Aus 154
553.....	Aus 143
554.....	Aus 801
555.....	Aus 181, 802
556.....	Aus 4604, AX 4604F, INT 604
557(T).....	Aus 238, AU5237X8
558(T).....	Aus 244, 245, 246, AU5244X5
559(T).....	Aus 244, 245, AU5244X5
560(T).....	Aus 244, 245, AU5244X5
561(T).....	Aus 367, 822, AU423150
562(T).....	Aus 249, 250, 251, 823, 824, AU422149, AU5250P2
563(T).....	Aus 249, 250, AU5250P2
564(T).....	Aus 250, AU5250P1
565(T).....	Aus 256, 827, 828, AU419146, 420146
566(P).....	Aus 289, 296, AU411141
567(T).....	Aus 6
568(T).....	Aus 4070, 4071, INT 70, 71
569(T).....	Aus 414, 415, 4708, AX 0415F, 4708F, INT 708, AU130090
570(T).....	Aus 81
571(P).....	Aus 778
572(T).....	Aus 125, 780, 781
573(T).....	Aus 169, 171, 173, 174
574(T).....	Aus 173, 174, 795, AU444146
575(T).....	Aus 794
576(T).....	Aus 167, AU5167X8
577(T).....	Aus 168, AU5167X8
578(T).....	Aus 168, AU5167X8
579(T).....	Aus 168, AU5167X8
580(T).....	Aus 178, AU5178P4
581(T).....	Aus 143, 157
582(T).....	Aus 153, 157, AU5XX153
583(T).....	Aus 143, 155, AU438144

## NUMERICAL INDEX OF CHARTS AFFECTED

## Edition No 9

Aus Chart	Notices	Aus Chart	Notices
Aus 6 .....	567(T)	Aus 683 .....	536
Aus 22 .....	543	Aus 700 .....	541, 542
Aus 59 .....	545	Aus 616 .....	534
Aus 81 .....	570(T)	Aus 646 .....	538
Aus 117 .....	547	Aus 676 .....	537
Aus 125 .....	572(T)	Aus 729 .....	544
Aus 141 .....	526	Aus 744 .....	546
Aus 143 .....	553, 581(T), 583(T)	Aus 778 .....	549, 571(P)
Aus 153 .....	582(T)	Aus 780 .....	572(T)
Aus 154 .....	552	Aus 781 .....	572(T)
Aus 155 .....	583(T)	Aus 794 .....	575(T)
Aus 157 .....	526, 581(T), 582(T)	Aus 795 .....	574(T)
Aus 163 .....	551	Aus 799 .....	551
Aus 167 .....	576(T)	Aus 801 .....	554
Aus 168 .....	577(T), 578(T), 579(T)	Aus 802 .....	555
Aus 169 .....	573(T)	Aus 814 .....	533
Aus 171 .....	573(T)	Aus 822 .....	526, 561(T)
Aus 173 .....	573(T), 574(T)	Aus 823 .....	562(T)
Aus 174 .....	573(T), 574(T)	Aus 824 .....	562(T)
Aus 178 .....	580(T)	Aus 827 .....	565(T)
Aus 181 .....	555	Aus 828 .....	565(T)
Aus 191 .....	528, 529	Aus 4070 .....	568(T)
Aus 200 .....	530, 531	Aus 4071 .....	568(T)
Aus 201 .....	530	Aus 4604 .....	556
Aus 202 .....	530	Aus 4622 .....	539
Aus 221 .....	532	Aus 4708 .....	569(T)
Aus 222 .....	526	Aus 4727 .....	548
Aus 235 .....	533	AX 0309F .....	543
Aus 238 .....	557(T)	AX 0415F .....	569(T)
Aus 244 .....	558(T), 559(T), 560(T)	AX 4604F .....	556
Aus 245 .....	558(T), 559(T), 560(T)	AX 4708F .....	569(T)
Aus 246 .....	558(T)	AX 63200 .....	530
Aus 249 .....	562(T), 563(T)	AX 70117 .....	547
Aus 250 .....	562(T), 563(T), 564(T)	AX 72309 .....	543
Aus 251 .....	562(T)		
Aus 256 .....	565(T)		
Aus 265 .....	526		
Aus 289 .....	566(P)		
Aus 292 .....	540, 541		
Aus 293 .....	540, 541		
Aus 294 .....	540		
Aus 296 .....	566(P)		
Aus 301 .....	541		
Aus 309 .....	543		
Aus 345 .....	550		
Aus 367 .....	561(T)		
Aus 376 .....	541		
Aus 386 .....	535		
Aus 387 .....	535		
Aus 388 .....	539		
Aus 393 .....	537		
Aus 414 .....	569(T)		
Aus 415 .....	569(T)		
Aus 444 .....	548		
Aus 462 .....	539		
Aus 539 .....	537		
Aus 543 .....	537		
		<b>INT Chart</b>	<b>Notices</b>
		INT 70 .....	568(T)
		INT 71 .....	568(T)
		INT 604 .....	556
		INT 622 .....	539
		INT 708 .....	569(T)
		INT 727 .....	548

ENC Cell	Notices
AU130090 .....	569(T)
AU303143 .....	526
AU303152 .....	526
AU304145 .....	526
AU304146 .....	526
AU304147 .....	526
AU304148 .....	526
AU411141 .....	566(P)
AU419146 .....	565(T)
AU420146 .....	565(T)
AU422149 .....	562(T)
AU423150 .....	561(T)
AU438144 .....	583(T)
AU444146 .....	574(T)
AU5XX153.....	582(T)
AU5167X8.....	576(T), 577(T), 578(T), 579(T)
AU5178P4.....	580(T)
AU5237X8.....	557(T)
AU5244X5.....	558(T), 559(T), 560(T)
AU5250P1.....	564(T)
AU5250P2.....	562(T), 563(T)
AU5539P1.....	526

**526 AUSTRALIA - Product**

Australian Hydrographic Service (AA394413, AA401625, AA403006)

**New Chart**

<i>Chart</i>	<i>Published</i>	<i>Title and description of amendments</i>	<i>Scale</i>	<i>Index Chart</i>	<i>Price</i>
Aus 157	27/3/2009	Australia - South Coast - Victoria - Port of Geelong and Approaches 37° 59' 06" S - 38° 12' 18" S 144° 20' 42" E - 144° 49' 18" E Plans: Point Henry Pier 38° 06' 47" S - 38° 08' 04" S 144° 25' 30" E - 144° 27' 50" E Point Wilson Pier 38° 05' 29" S - 38° 06' 06" S 144° 32' 06" E - 144° 33' 19" E Clifton Springs 38° 09' 08" S - 38° 09' 22" S 144° 33' 00" E - 144° 33' 30" E <i>New chart with general updating throughout including nav aids upgrade referred to in temporary Notice to Mariners 996/2007.</i>	1:37 500  1:10 000  1:10 000  1:5 000	Aus 5001	\$35.00
Aus 222	27/3/2009	Australia - East Coast - New South Wales - Clarence River and Approaches 29° 22' 30" S - 29° 27' 48" S 153° 14' 12" E - 153° 24' 33" E <i>New chart providing improved coverage of Clarence River and the port of Yamba.</i>	1:15 000	Aus 5001	\$35.00
Aus 265	27/3/2009	Australia - East Coast - Queensland - Approaches to Port Alma 23° 21' 30" S - 23° 35' 30" S 150° 51' 30" E - 151° 01' 06" E Plan: Port Alma 23° 33' 36" S - 23° 35' 30" S 150° 51' 30" E - 150° 53' 06" E <i>New chart providing improved coverage of Port Alma and approaches.</i>	1:25 000  1:10 000	Aus 5000	\$35.00

**New Chart to be published shortly**

<i>Chart</i>	<i>Title</i>	<i>Scale</i>	<i>Expected Publication Date</i>	<i>Expected Stock Availability</i>
Aus 141	Australia - South Coast - Victoria - Plans in South West Victoria Plans: Port Fairy to Warrnambool Apollo Bay Loutit Bay Port Fairy Warrnambool Apollo Bay Harbour Port Campbell	  1:50 000 1:37 500 1:25 000 1:10 000 1:10 000 1:7 500 1:7 500	8 May 2009	15 June 2009
Aus 822	Australia - East Coast - Queensland - Port Clinton to Percy Isles	1:150 000	8 May 2009	15 June 2009

**New Electronic Navigation Chart (Seafarer ENC)**

<i>Cell Name</i>	<i>Released</i>	<i>Title</i>
AU303143	May 2009	Bismark Sea - Cell 10
AU303152	May 2009	South Pacific Ocean - Masahet Island to Tabar Islands
AU304145	May 2009	Bismark Sea - Cell 8
AU304146	May 2009	Bismark Sea - Cell 7
AU304147	May 2009	Bismark Sea - Cell 6
AU304148	May 2009	Bismark Sea - Cell 5
AU5539P1	May 2009	South Pacific Ocean - Lihir Island - Luise Harbour

**Chart permanently withdrawn**

<i>Chart</i>	<i>On publication of new chart</i>
Aus 157	Aus 157

For further details refer to the AHS website at [www.hydro.gov.au](http://www.hydro.gov.au) for new edition and new chart stock arrival information.

When placing orders with a chart agent, mariners should advise whether their order pertains to the current edition or the new edition.

**527 AUSTRALIA - Product - Amendment to Australian National Tide Tables 2009**

Australian Hydrographic Service (AA401442)

Page 324

*Amend* TAVANATANGIR HBR. To Chart Datum to 0.0

**528\* AUSTRALIA - NEW SOUTH WALES - Narooma - Beacon discontinued**

NSW Maritime (AA401716, AA401717)

**Aus 191 (plan, Narooma) [353/2009]**

Delete beacon 36° 12'.57 S 150° 07'.34 E

**529\* AUSTRALIA - NEW SOUTH WALES - Crookhaven River - Depths; infrastructure**

Department of Environment and Climate Change (DHDB 1216387)

**Aus 191 (plan, Crookhaven River Entrance) [528/2009]**

Insert accompanying block 34° 54'.2 S 150° 45'.0 E

**530\* AUSTRALIA - NEW SOUTH WALES - Port Jackson - Manly to Athol Bay - Lights**

L Ellis, NSW Maritime (AA402067)

**Aus 200 [33/2009]**

Insert light, F.G 33° 50'.891 S 151° 14'.317 E

Amend light to 2F.G 33° 48'.14 S 151° 16'.95 E

**Aus 201 [1113/2008]**

Amend light to 2F.G 33° 48'.04 S 151° 17'.02 E

light to 2F.R 33° 48'.05 S 151° 17'.04 E

**Aus 202 [1113/2008]**

Insert light, F.G 33° 50'.787 S 151° 14'.363 E

light, F.R 33° 50'.790 S 151° 14'.371 E

**AX 63200 [1065/2008]**

Insert light, F.G 33° 50'.891 S 151° 14'.317 E

Amend light to 2F.G 33° 48'.14 S 151° 16'.95 E

8 May 2009

**531\* AUSTRALIA - NEW SOUTH WALES - Port Jackson - Cabarita Point - Legend**  
Australian Hydrographic Service (AA401760)

**Aus 200** [530/2009]

*On certain copies only*

Delete legend, R 33° 50'.47 S 151° 07'.09 E

**532\* AUSTRALIA - NEW SOUTH WALES - South Solitary Island - Light buoy established**  
Department of Environment and Climate Change (AA402082, AA402109)

**Aus 221** [NC 13/3/2009]

Insert special spar light buoy, *Fl.2-2s*, without topmark 30° 12'.86 S 153° 13'.73 E

**533\* AUSTRALIA - QUEENSLAND - North Point to Caloundra Head - Light buoy; port limit**  
UKHO (AA402126)

**Aus 235** [NE 30/1/2009]

Insert dashed magenta line, with legend *Brisbane Port Limit*, between 27° 01'.33 S 153° 27'.28 E  
26° 48'.11 S 153° 09'.08 E

Substitute port lateral pillar light buoy, *Fl.R.4s NE4*, without topmark for light buoy 26° 59'.5 S 153° 20'.3 E

**Aus 814** [1001/2008]

Insert dashed magenta line, with legend *Brisbane Port Limit*, between 27° 01'.43 S 153° 27'.22 E  
26° 48'.21 S 153° 09'.02 E

**534\* AUSTRALIA - CORAL SEA - Bougainville Reef - Beacon destroyed**  
Australian Maritime Safety Authority (AA398634)

**Aus 616 (plan, Bougainville Reef)** [180/2007]

Delete beacon 15° 29'.2 S 147° 06'.4 E

**535\* PAPUA NEW GUINEA - Fortification Point - Light sector**  
HMAS *Melville* (AA399710)

**Aus 386** [361/2009]

Amend light sector to white 170° - 318° (148°) 6° 19'.10 S 147° 48'.33 E

**Aus 387** [48/2009]

Amend light sector to white 170° - 318° (148°) 6° 19'.10 S 147° 48'.33 E

**536\* PAPUA NEW GUINEA - Anewa Bay - Dokome Point - Light**  
Australian Hydrographic Service (AA305669), Australian Maritime Systems (AA402117)

**Aus 683 (plan, Approaches to Kieta Bay and Anewa Bay)** [94/2008]

Move light 6° 10'.9 S 155° 32'.9 E  
to 6° 10'.90 S 155° 32'.89 E

**Aus 683 (plan, Anewa Bay)**

Move light 6° 10'.91 S 155° 32'.94 E  
to 6° 10'.902 S 155° 32'.894 E

**537\* PAPUA NEW GUINEA - Nabuto Bay to Fangalawa Bay - Chart limits; plan withdrawn**

Australian Hydrographic Service (AA389695)

**Aus 393** [NC 9/5/2008]

Insert	magenta limits, with legend <i>Aus 669</i> in NE corner, between	2° 53'.00 S	151° 10'.50 E
		2° 53'.00 S	151° 19'.32 E
		2° 47'.07 S	151° 19'.32 E
		2° 47'.07 S	151° 10'.50 E
		2° 53'.00 S	151° 10'.50 E
	magenta limits, with legend <i>Aus 669</i> in NE corner, between	2° 52'.77 S	151° 45'.77 E
		2° 52'.77 S	152° 12'.30 E
		2° 30'.15 S	152° 12'.30 E
		2° 30'.15 S	151° 45'.77 E
		2° 52'.77 S	151° 45'.77 E
Delete	legend (see Aus 676)	2° 39'.3 S	152° 02'.7 E

**Aus 539** [845/2008]

Insert	magenta limits, with legend <i>Aus 669</i> in SE corner, between	2° 52'.77 S	152° 00'.00 E
		2° 52'.77 S	152° 12'.30 E
		2° 46'.28 S	152° 12'.30 E

**Aus 543** [410/2009]

Insert	magenta limits, with legend <i>Aus 669</i> in NW corner, between	2° 47'.07 S	151° 17'.47 E
		2° 47'.07 S	151° 10'.50 E
		2° 53'.00 S	151° 10'.50 E
		2° 53'.00 S	151° 17'.47 E

**Aus 676 (plan, Pigibut Bay)** [478/2009]

Delete	plan, centred on	2° 38'.6 S	152° 01'.5 E
--------	------------------	------------	--------------

**538\* PAPUA NEW GUINEA - Rasch Pass to Panab Island - Leading beacons discontinued**HMAS *Melville* (AA400634, AA402011)**Aus 646** [1071/2008]

Delete	beacon	5° 10'.25 S	145° 48'.54 E
	topmark	5° 09'.56 S	145° 49'.34 E
	dashed and continuous line with legend, emanating from beacon	5° 10'.25 S	145° 48'.54 E
	legend, WR	5° 09'.58 S	145° 49'.34 E

**539\* PAPUA NEW GUINEA - Manam Island - Rock disproved**HMAS *Melville* (AA401880)**Aus 388** [49/2009]

Delete	rock and enclosing danger circle, with legend	4° 07'.8 S	145° 16'.2 E
--------	---	------------	--------------

**Aus 462** [194/2009]

Delete	danger circle, with legend	4° 08'.0 S	145° 16'.0 E
--------	----------------------------	------------	--------------

**Aus 4622 (INT 622)** [376/2009]

Delete	danger circle, with legend	4° 08'.0 S	145° 16'.0 E
--------	----------------------------	------------	--------------

**540\* AUSTRALIA - TORRES STRAIT - Horn Island - Smith Point - Pipeline***Former Notice - 1139(P)/2007 is cancelled*

Australian Hydrographic Service (AA235676, AA235677), Maritime Safety Queensland Notice 67/2009 (AA384454), Maunsell Australia Pty Ltd (DHDB 582125)

**Aus 292 [481/2009]**

Insert	outfall pipeline, between	10° 36'.61 S	142° 14'.25 E
		10° 36'.66 S	142° 14'.21 E

**Aus 293 [481/2009]**

Insert	outfall pipeline, between	10° 36'.693 S	142° 14'.205 E
		10° 36'.749 S	142° 14'.154 E

**Aus 294 [481/2009]**

Insert	outfall pipeline, between	10° 36'.71 S	142° 14'.20 E
		10° 36'.75 S	142° 14'.15 E

**541\* AUSTRALIA - TORRES STRAIT - Hovell Rock - Depth**

Maritime Safety Queensland (DHDB 1241905)

**Aus 292 [540/2009]**

Substitute	depth, 2.7m, for depth 3.4m	10° 35'.5 S	142° 13'.2 E
------------	-----------------------------	-------------	--------------

**Aus 293 [540/2009]**

Substitute	depth, 2.7m, for depth 3.4m	10° 35'.63 S	142° 13'.14 E
------------	-----------------------------	--------------	---------------

**Aus 301 [480/2009]**

Substitute	depth, 2.7m, for depth 3.4m	10° 35'.6 S	142° 13'.3 E
------------	-----------------------------	-------------	--------------

**Aus 376 [480/2009]**

Substitute	depth, 2.7m, for depth 3.4m	10° 35'.5 S	142° 13'.3 E
------------	-----------------------------	-------------	--------------

**Aus 700 [363/2009]**

Substitute	depth, 2.7m, for depth 3.4m	10° 35'.5 S	142° 13'.2 E
------------	-----------------------------	-------------	--------------

**542\* AUSTRALIA - TORRES STRAIT - Friday Passage - Depths**

DGST (DHDB 924349)

**Aus 700 [541/2009]**

Insert	accompanying block	10° 34'.0 S	142° 05'.0 E
--------	--------------------	-------------	--------------

**543\* AUSTRALIA - NORTHERN TERRITORY - Bathurst Island - Historic wreck northwestwards; chart notes**  
 Australian Hydrographic Service (AA402066), Northern Territory Museum and Art Gallery Marine Archaeology (AA401843, AA401773)

**Aus 22 [NC 21/11/2008]**

Insert	depth, 9 <sub>1</sub> m, enclosed by danger circle with legend <i>Historic Wk (see Note)</i>	11° 13'.10 S	130° 05'.45 E
	accompanying Historic Wreck note	11° 16'.8 S	130° 25'.5 E
	accompanying Unexploded Ordnance note magenta legend, <i>Unexploded Ordnance (see Note)</i> , centred on	11° 16'.8 S	130° 27'.0 E
	restricted area circle, radius 0.43M	11° 13'.0 S	130° 04'.0 E
		11° 13'.10 S	130° 05'.45 E
Delete	depth, 15 <sub>2</sub> m	11° 13'.2 S	130° 05'.3 E

**Aus 309 [484/2009]**

Insert	depth, 9 <sub>1</sub> m, enclosed by danger circle with legend <i>Historic Wk (see Note)</i>	11° 13'.10 S	130° 05'.45 E
	accompanying Unexploded Ordnance note magenta legend, <i>Unexploded Ordnance (see Note)</i> , centred on	12° 20'.0 S	128° 27'.0 E
		11° 13'.5 S	130° 09'.0 E

**AX 0309F [484/2009]**

Insert	depth, 9 <sub>1</sub> m, enclosed by danger circle with legend <i>Historic Wk (see Note)</i>	11° 13'.10 S	130° 05'.45 E
	accompanying Unexploded Ordnance note magenta legend, <i>Unexploded Ordnance (see Note)</i> , centred on	12° 20'.0 S	128° 27'.0 E
		11° 35'.5 S	130° 09'.0 E

**AX 72309 [484/2009]**

Insert	depth, 9 <sub>1</sub> m, enclosed by danger circle with legend <i>Historic Wk (see Note)</i>	11° 13'.10 S	130° 05'.45 E
	accompanying Unexploded Ordnance note magenta legend, <i>Unexploded Ordnance (see Note)</i> , centred on	12° 20'.0 S	128° 27'.0 E
		11° 35'.5 S	130° 09'.0 E

**544\* AUSTRALIA - WESTERN AUSTRALIA - Sand Cay to Maret Island - Territorial sea baseline; chart note**  
 Geoscience Australia (DHDB 1235224)

**Aus 729 [866/2007]**

Insert	straight territorial sea baseline with base points, between	14° 14'.38 S	125° 19'.20 E
		14° 16'.96 S	125° 13'.30 E
		14° 22'.99 S	124° 58'.41 E
Substitute	accompanying note for AMJ note	14° 47'.3 S	125° 35'.0 E
Delete	straight territorial sea baseline with base points, between	14° 14'.4 S	125° 19'.2 E
		14° 17'.1 S	125° 13'.3 E
	straight territorial sea baseline with base points, between	14° 17'.4 S	125° 12'.7 E
		14° 23'.0 S	124° 58'.5 E

**545\* AUSTRALIA - WESTERN AUSTRALIA - Dampier - King Bay - Light discontinued**  
Dampier Port Authority Notice 15/2009 (AA401679)

**Aus 59 (plan, Withnell Bay to King Bay) [368/2009]**

Delete	light	20° 37'.57 S	116° 44'.91 E
--------	-------	--------------	---------------

**546\* AUSTRALIA - WESTERN AUSTRALIA - Y Island - Wreck**  
HMAS *Leeuwin* (AA399582)

**Aus 744 [154/2009]**

Insert	stranded wreck	21° 57'.33 S	114° 25'.13 E
--------	----------------	--------------	---------------

**547\* AUSTRALIA - WESTERN AUSTRALIA - Fremantle - Rous Head - Submarine power cable**  
Fremantle Ports (AA402138), UKHO (AA402127)

**Aus 117 [489/2009]**

Delete	submarine power cable, centred on	32° 03'.27 S	115° 44'.02 E
--------	-----------------------------------	--------------	---------------

**AX 70117 [489/2009]**

Delete	submarine power cable, centred on	32° 03'.27 S	115° 44'.02 E
--------	-----------------------------------	--------------	---------------

**548\* AUSTRALIA - SOUTH AUSTRALIA - Spencer Gulf - Limits**  
Australian Hydrographic Service (AA401761)

**Aus 444 [202/2009]**

Insert	magenta limits, with legend <i>Aus 777</i> in NW corner, between	34° 30'.0 S	136° 06'.1 E
		34° 30'.0 S	137° 40'.0 E
		33° 40'.6 S	137° 40'.0 E
		33° 40'.6 S	136° 06'.1 E
		34° 30'.0 S	136° 06'.1 E
	magenta limits, with legend <i>Aus 778</i> in SW corner, between	33° 54'.5 S	137° 05'.3 E
		33° 54'.5 S	138° 04'.7 E
		32° 29'.0 S	138° 04'.7 E
		32° 29'.0 S	137° 05'.3 E
		33° 54'.5 S	137° 05'.3 E

Delete	legend, Adjoining Chart Aus 4727, in W border	35° 30'.0 S	135° 15'.5 E
--------	---	-------------	--------------

**Aus 4727 (INT 727) [371/2009]**

Insert	magenta limits, with legend <i>Aus 444</i> in SW corner, between	36° 30'.00 S	136° 55'.65 E
		36° 30'.00 S	135° 15'.50 E
		32° 07'.00 S	135° 15'.50 E
		32° 07'.00 S	136° 55'.65 E

Delete	legend, Adjoining Chart Aus 444, in E border magenta limits, with legend Aus 345, centred on	34° 30'.00 S	136° 55'.65 E
		35° 00'.0 S	136° 23'.0 E

**549\* AUSTRALIA - SOUTH AUSTRALIA - Yarraville Shoals - Depth**  
Flinders Ports (DHDB 1243139)

**Aus 778 [245/2008]**

Insert depth, 19<sub>6</sub>, enclosed by contour 33° 13'.98 S 137° 34'.36 E

Delete depth, 20<sub>1</sub>m 33° 14'.1 S 137° 34'.3 E

**Aus 778 (plan, Yarraville Shoals)**

Insert depth, 19<sub>6</sub>, enclosed by contour 33° 13'.98 S 137° 34'.36 E

**550\* AUSTRALIA - SOUTH AUSTRALIA - Kangaroo Island - Cape Borda - Light flare**

Australian Hydrographic Service (AA401330)

**Aus 345 [202/2009]**

*On certain copies only*

Delete light flare 35° 50'.2 S 136° 26'.6 E

**551\* AUSTRALIA - TASMANIA - Burnie - Bridge demolished**

*Former Notice - 990(T)/2008 is cancelled*

Marine and Safety Tasmania (AA401077)

**Aus 163 [1084/2008]**

Delete continuous line, between 41° 02'.99 S 145° 54'.88 E  
41° 02'.92 S 145° 55'.01 E

**Aus 163 (plan, Port of Burnie)**

Insert continuous line, between 41° 02'.995 S 145° 54'.882 E  
41° 02'.996 S 145° 54'.884 E  
continuous line, between 41° 02'.918 S 145° 55'.005 E  
41° 02'.919 S 145° 55'.007 E

Delete continuous line, between 41° 02'.995 S 145° 54'.882 E  
41° 02'.918 S 145° 55'.005 E  
continuous line, between 41° 02'.996 S 145° 54'.884 E  
41° 02'.919 S 145° 54'.007 E  
light 41° 02'.97 S 145° 54'.92 E  
light 41° 02'.94 S 145° 54'.97 E  
legend, Acid Line Bridge and vertical clearance,  
centred on 41° 02'.95 S 145° 54'.93 E  
Acid Line Bridge diagram, centred on 41° 04'.0 S 145° 55'.1 E

**Aus 799 [1084/2008]**

Delete continuous line, between 41° 03'.0 S 145° 54'.9 E  
41° 02'.9 S 145° 55'.0 E

**552\* AUSTRALIA - VICTORIA - Port Phillip - Webb Dock - Leading lights repositioned**

Victorian Notice 46/2009 (AA398182)

**Aus 154 [162/2009]**

Insert light beacon, *Fl.R.*2s, with triangular topmark apex up  
a dashed line in a direction 154.8° for a distance of  
1500m, with legend 334.8°, emanating from light 37° 50'.442 S 144° 54'.247 E  
37° 50'.344 S 144° 54'.189 E

Move light 37° 50'.37 S 144° 54'.20 E  
to 37° 50'.344 S 144° 54'.189 E

Delete dashed line with legend, emanating from light 37° 50'.37 S 144° 54'.20 E  
light 37° 50'.43 S 144° 54'.24 E

**553\* AUSTRALIA - VICTORIA - Port Phillip - Aspendale to Frankston - Fish havens established**  
Victorian Notice 53/2009 (AA400836)

**Aus 143 [426/2009]**

Insert	fish haven, between	38° 02'.43 S	145° 04'.27 E
		38° 02'.44 S	145° 04'.95 E
		38° 01'.90 S	145° 04'.96 E
		38° 01'.89 S	145° 04'.28 E
		38° 02'.43 S	145° 04'.27 E
	fish haven, between	38° 05'.51 S	145° 05'.60 E
		38° 05'.52 S	145° 06'.29 E
		38° 04'.98 S	145° 06'.30 E
		38° 04'.97 S	145° 05'.62 E
		38° 05'.51 S	145° 05'.60 E
	fish haven, between	38° 08'.92 S	145° 05'.13 E
		38° 08'.76 S	145° 05'.81 E
		38° 08'.22 S	145° 05'.83 E
		38° 08'.21 S	145° 05'.14 E
		38° 08'.92 S	145° 05'.13 E

**554\* AUSTRALIA - VICTORIA - Venus Bay - Light buoy**

Victorian Notice 58/2009 (AA401783)

**Aus 801 [375/2009]**

Insert	safe water pillar light buoy, <i>LFl. 10s 2M</i> , with topmark	38° 39'.48 S	145° 42'.70 E
Delete	light buoy	38° 39'.5 S	145° 42'.7 E

**555\* AUSTRALIA - VICTORIA - Corner Inlet - Light buoys repositioned**

Victorian Notice 52/2009 (AA400711)

**Aus 181 [206/2009]**

Move	light buoy	38° 51'.1 S	146° 35'.6 E
	to	38° 51'.28 S	146° 35'.63 E
	light buoy	38° 51'.1 S	146° 34'.0 E
	to	38° 51'.12 S	146° 33'.95 E
	light buoy	38° 50'.6 S	146° 33'.4 E
	to	38° 50'.66 S	146° 33'.36 E

**Aus 802 [375/2009]**

Move	light buoy	38° 51'.1 S	146° 35'.6 E
	to	38° 51'.28 S	146° 35'.62 E
	light buoy	38° 51'.1 S	146° 34'.0 E
	to	38° 51'.12 S	146° 33'.94 E
	light buoy	38° 50'.6 S	146° 33'.4 E
	to	38° 50'.66 S	146° 33'.35 E

**556\* PACIFIC OCEAN - Solomon Islands - Santa Isabel Island - Depth**

UKHO (AA401670)

**Aus 4604 (INT 604) [194/2009]**

Insert	displaced sounding, <i>510m</i> , enclosed by contour	7° 04'.3 S	158° 49'.6 E
Delete	contour enclosing depth, <i>510m</i>	7° 05'.0 S	158° 35'.0 E

**AX 4604F [194/2009]**

Insert	displaced sounding, <i>510m</i> , enclosed by contour	7° 04'.3 S	158° 49'.6 E
Delete	contour enclosing depth, <i>510m</i>	7° 05'.0 S	158° 35'.0 E

8 May 2009

**557(T)/2009 AUSTRALIA - QUEENSLAND - Brisbane River - Hamilton Reach - Drilling operations completed***Former Notice - 437(T)/2009 is cancelled*

Maritime Safety Queensland Notice 271(T)/2009 (AA402336)

Cancel this notice on receipt.

**Chart formerly affected – Aus 238 - AU5237X8****558(T)/2009 AUSTRALIA - QUEENSLAND - Gladstone - Dredging operations completed***Former Notice - 505(T)/2009 is cancelled*

Maritime Safety Queensland Notice 223(T)/2009 (AA399739)

Cancel this notice on receipt.

**Chart formerly affected – Aus 244 – Aus 245 – Aus 246 - AU5244X5****559(T)/2009 AUSTRALIA - QUEENSLAND - Gladstone - Drilling operations***Date - Until 6 July 2009*

Maritime Safety Queensland Notice 267(T)/2009 (AA402314, AA402885)

The barge *Jembri-Dev*, jack-up rig *Sideson II* and support vessels *Reunion* and *Wandana* are conducting drilling operations between Picnic Island (23° 48'.61 S 151° 14'.75 E) and North Passage Island (23° 45'.81 S 151° 10'.64 E).

All vessels will monitor VHF Ch 13 and Ch 16.

Mariners are advised to navigate with caution in the area.

**Chart temporarily affected – Aus 244 – Aus 245 - AU5244X5****560(T)/2009 AUSTRALIA - QUEENSLAND - Gladstone - Fishermans Landing - Harbour works; dredging operations***Former Notice - 975(T)/2008 is cancelled**Date - Until 31 July 2009*

Maritime Safety Queensland Notice 573(T)/2008, 268(T)/2009 (AA359474, AA402313)

Harbour works associated with the construction of berth No1 (23° 47'.52 S 151° 10'.95 E) are in progress.

The piling barge *PMG 150* and MT *Oxley* are onsite and will display the appropriate lights and shapes.The dredge *Wombat* and support vessels are conducting dredging operations in the area bounded by:

23° 47'.80 S 151° 11'.88 E

23° 47'.51 S 151° 11'.44 E

23° 47'.51 S 151° 10'.95 E

23° 47'.59 S 151° 11'.07 E

23° 47'.60 S 151° 11'.38 E

A pipeline marked by lights exists between the dredge and position 23° 47'.57 S 151° 10'.93 E.

All vessels will monitor VHF Ch 13 and Ch 16.

Mariners are advised to navigate with caution in the area.

**Chart temporarily affected – Aus 244 – Aus 245 - AU5244X5**

**561(T)/2009 AUSTRALIA - QUEENSLAND - Shoalwater Bay - Live firing***Date - Until 22 May 2009*

Maritime Safety Queensland Notice 241(T)/2009 (AA400815)

Live firing activities will be conducted in the Shoalwater Bay training area during the period 17 May to 21 May 2009.

A marine danger area extends to all waters south of the line defined by the following positions:

West Bank Shoalwater Creek	22° 31'.72 S 150° 28'.41 E
East Bank Shoalwater Creek	22° 31'.27 S 150° 29'.21 E
South Bank East Creek	22° 31'.07 S 150° 34'.01 E

All waters, creeks, beaches and other areas within the declared marine danger area are not available for access.

Mariners are advised to keep clear of this area throughout the above times.

**Chart temporarily affected – Aus 367 – Aus 822 - AU423150**

**562(T)/2009 AUSTRALIA - QUEENSLAND - Hay Point to Bailey Islet - Scientific instruments***Former Notice - 328(T)/2009 is cancelled*

Maritime Safety Queensland Notice 253(T)/2009 (AA401622)

Special light buoys, *F(5)Y.20s*, exist in positions:

21° 16'.49 S 149° 18'.61 E
21° 16'.34 S 149° 18'.59 E
* 21° 02'.40 S 149° 32'.76 E

\* Indicates revised entry.

Mariners are not to use these buoys as moorings.

**Chart temporarily affected – Aus 249 – Aus 250 – Aus 251 – Aus 823 – Aus 824 - AU422149 - AU5250P2**

**563(T)/2009 AUSTRALIA - QUEENSLAND - Hay Point - Diving operations***Date - Until 22 May 2009*

Maritime Safety Queensland Notice 250(T)/2009 (AA401626)

Diving operations are in progress in the vicinity of the Hay Point services berths (BMA) (21° 15'.68 S 149° 18'.76 E).

MV *Lisa Lee* will be in attendance and will monitor VHF Ch 16.

Mariners are advised to navigate with caution in the area.

**Chart temporarily affected – Aus 249 – Aus 250 - AU5250P2**

**564(T)/2009 AUSTRALIA - QUEENSLAND - Mackay - Depth information***Former Notice - 387(T)/2009 is cancelled*

Maritime Safety Queensland Notice 272(T)/2009 (AA402308)

Available depths as at 1 May 2009:

<i>Remarks</i>	<i>Metres</i>
Entrance Transit (Eastern Bank)	8.6
Entrance Channel	8.3
Swing Basin (Inwards)	8.5
Swing Basin (Outwards)	8.4
* Berth No 1	10.8
* Berth No 3	12.9
* Composite Nos 3/4 Panamax Berth	12.9
* Berth No 4	10.2
* Berth No 5	12.3

\* Indicates revised entry.

Caution: Lesser depths may occur in berthing boxes but are not considered to have an impact on shipping.

**Chart temporarily affected – Aus 250 - AU5250P1****565(T)/2009 AUSTRALIA - QUEENSLAND - Halifax Bay - Live firing***Date - Until 27 May 2009*

Department of Defence RAAF (AA402753)

Military exercise areas R747 and R748 will be activated for a live firing from 25 to 26 May 2009.

**Chart temporarily affected – Aus 256 – Aus 827 – Aus 828 - AU419146 - AU420146****566(P)/2009 AUSTRALIA - TORRES STRAIT - Varzin Passage - Light buoy to be established***Date - On or about 4 June 2009*

Australian Maritime Safety Authority ATH 13/2009 (AA402250, AA402251)

A special spherical light buoy, *Fl(5)Y.20s*, without topmark will be established in position 10° 31'.0 S 141° 57'.0 E (WGS84 datum).**Chart which will be affected – Aus 289 – Aus 296 - AU411141****567(T)/2009 AUSTRALIA - QUEENSLAND - Karumba - Light buoy re-established***Former Notice - 220(T)/2009 is cancelled*

Maritime Safety Queensland Notice 254(T)/2009 (AA402270)

Cancel this notice on receipt.

**Chart formerly affected – Aus 6****568(T)/2009 INDIAN OCEAN - Sumatera - Scientific instruments westwards***Former Notice - 945(T)/2008 is cancelled*

JAMSTEC (AA402334)

Scientific instruments, Triton buoys, exist as follows:

<i>Number</i>	<i>Position</i>
17	5° 01'.99 S 94° 59.20 E
18	1° 36'.24 S 90° 04.47 E

**Chart temporarily affected – Aus 4070 (INT 70) – Aus 4071 (INT 71)**

**569(T)/2009 AUSTRALIA - WESTERN AUSTRALIA - Rowley Shoals - Seismic survey westwards***Date* - Until 31 August 2009

Searcher Seismic Pty Ltd (AA402599)

MV *Ocean Endeavour* is conducting a survey in the area bounded by 16° 20'.0 S to 17° 45'.0 S and 114° 00'.0 E to 116° 30'.0 E.

**Chart temporarily affected – Aus 414 – Aus 415 – Aus 4708 (INT 708) – AX 0415F – AX 4708F - AU130090****570(T)/2009 AUSTRALIA - WESTERN AUSTRALIA - Geraldton - Champion Bay - Light buoy withdrawn**

Geraldton Port Authority (AA402991)

The isolated danger light buoy (28° 43'.88 S 114° 33'.25 E) has been withdrawn; a special buoy exists in situ.

**Chart temporarily affected – Aus 81****571(P)/2009 AUSTRALIA - SOUTH AUSTRALIA - Spencer Gulf - Light buoys to be established***Date* - On or about 10 May 2009

Australian Maritime Safety Authority ATH 9/2009 (AA398679)

Light buoys will be established as follows:

<i>Position</i>	<i>Remarks</i>
33° 34'.90 S 137° 32'.50 E	<i>Fl(2)G.5s</i>
33° 24'.30 S 137° 29'.00 E	<i>Fl(2)R.5s</i>

**Chart which will be affected – Aus 778****572(T)/2009 AUSTRALIA - SOUTH AUSTRALIA - Port Stanvac - Pipeline**

Department for Transport, Energy and Infrastructure SA Notice 26/2009 (AA402614)

A pipeline is being laid in the area bounded by (WGS84 datum):

35° 07'.49 S 138° 28'.13 E
35° 07'.53 S 138° 27'.71 E
35° 07'.63 S 138° 27'.73 E
35° 07'.60 S 138° 28'.16 E

Vessels associated with the works will display appropriate lights and shapes.

All vessels are required to keep a distance of at least 100m from any vessels working within the above area.

**Chart temporarily affected – Aus 125 – Aus 780 – Aus 781****573(T)/2009 AUSTRALIA - TASMANIA - D'Entrecasteaux Channel to Norfolk Bay - Scientific instruments recovered***Former Notice* - 1087(T)/2007 is cancelled

Marine and Safety Tasmania Notice M135/2007 (AA297107)

Cancel this notice on receipt.

**Chart formerly affected – Aus 169 – Aus 171 – Aus 173 – Aus 174**

**574(T)/2009 AUSTRALIA - TASMANIA - Southport - Harbour works**

*Former Notice* - 1321(T)/2008 is cancelled

Marine and Safety Tasmania Notice M103/2008, M65/2009 (AA364362, AA402316)

Harbour works associated with the demolition of the existing jetty (43° 25'.97 S 146° 58'.47 E) and construction of a new jetty are in progress.

The light (43° 26'.00 S 146° 58'.49 E) is unlit.

The jetty is closed to all vessels. Limited berthing will be available on the jetty head in consultation with the contractor.

**Chart temporarily affected – Aus 173 – Aus 174 – Aus 795 - AU444146****575(T)/2009 AUSTRALIA - TASMANIA - Maatsuyker Island - Scientific instruments recovered southeastwards**

*Former Notice* - 1211(T)/2008 is cancelled

Marine and Safety Tasmania Notice M113/2008 (AA368456)

Cancel this notice on receipt.

**Chart formerly affected – Aus 794****576(T)/2009 AUSTRALIA - TASMANIA - Port Dalrymple - Bell Bay - Drilling operations completed**

*Former Notice* - 228(T)/2009 is cancelled

Marine and Safety Tasmania Notice M24/2009 (AA386118)

Cancel this notice on receipt.

**Chart formerly affected – Aus 167 - AU5167X8****577(T)/2009 AUSTRALIA - TASMANIA - River Tamar - Batman Bridge - Clearance restored**

*Former Notice* - 113(T)/2009 is cancelled

Marine and Safety Tasmania Notice M121/2008 (AA375579)

Cancel this notice on receipt.

**Chart formerly affected – Aus 168 - AU5167X8****578(T)/2009 AUSTRALIA - TASMANIA - River Tamar - Kings Wharf - Dredging operations completed**

*Former Notice* - 396(T)/2009 is cancelled

Marine and Safety Tasmania Notice M50/2009 (AA396857)

Cancel this notice on receipt.

**Chart formerly affected – Aus 168 - AU5167X8****579(T)/2009 AUSTRALIA - TASMANIA - River Tamar - Launceston - Dredging operations completed**

*Former Notice* - 1106(T)/2008 is cancelled

Marine and Safety Tasmania Notice M102/2008 (AA364364)

Cancel this notice on receipt.

**Chart formerly affected – Aus 168 - AU5167X8**

**580(T)/2009 AUSTRALIA - TASMANIA - Grassy Harbour - Lights relit**

*Former Notice - 521(T)/2009 is cancelled*

Marine and Safety Tasmania Notice M57/2009 (AA399786)

Cancel this notice on receipt.

**Chart formerly affected – Aus 178 - AU5178P4****581(T)/2009 AUSTRALIA - VICTORIA - Port Phillip - Geelong - Navaid upgrade works completed**

*Former Notice - 996(T)/2007 is cancelled*

Australian Hydrographic Service (AA394413)

Cancel this notice on receipt.

**Chart formerly affected – Aus 143 – Aus 157****582(T)/2009 AUSTRALIA - VICTORIA - Port Phillip - Geelong - Corio Quay - Harbour works**

*Former Notice - 466(T)/2009 is cancelled*

*Date - Until 20 December 2009*

Victorian Notice 61(T)/2009 (AA402622)

Works associated with the construction of the new Corio Quay No 4 berth facility are in progress.

The barge *Jub* and support vessels *Taurus* and *Taree* are conducting piling operations.

All hazards to navigation will display Q. Y lights.

All vessels are required to keep a distance of at least 200m from the area.

**Chart temporarily affected – Aus 153 – Aus 157 - AU5XX153****583(T)/2009 AUSTRALIA - VICTORIA - Port Phillip - Submarine pipeline repair works completed**

*Former Notice - 118(T)/2009 is cancelled*

Victorian Notice 60/2009 (AA402262)

Cancel this notice on receipt.

**Chart formerly affected – Aus 143 – Aus 155 - AU438144**

## HYDROGRAPHIC REPORTS

<i>Locality</i>	<i>Report</i>	<i>Ship/Authority</i>	<i>Observer</i>
PNG- Dreger Harbour Hermit Island	Wrecks Wreck		R Pearce

**NAVIGATION WARNINGS**

The following radio messages have been received during the period to 8 May 2009. Signal copies of these messages may be destroyed. It is recommended that the reprint of Navigational Warnings should be kept in a file or a book divided into areas. Cancellation should be made on receipt of signals and reprints.

Rigs on location other than those listed in the latest Section III summary are the subject of Radio Navigational Warnings. Rigs in transit will not be the subject of Warnings.

**AUSCOAST WARNING**

- 098 Cancelled.  
 099 Drill rig *West Atlas* in position 12° 28'·23 S 124° 16'·50 E. 2.5M clearance requested.  
 100 Drill rig *Songa Mercur* in position 19° 18'·60 S 116° 33'·41 E. 2.5M clearance requested.  
 101 Cancelled.  
 102 White Tip Reef (front) light K3054 (19° 55'·56 S 150° 16'·86 E) unreliable.  
 103 Drill rig *Stena Clyde* in position 20° 04'·18 S 115° 10'·45 E. 2.5M clearance requested.  
 104 Diamond Reign racon (13° 11'·56 S 143° 47'·55 E) unreliable.  
 105 Reefcentre vessels polling system temporarily discontinued. Unable to poll or monitor ship movements. Ship traffic information operating as normal. Request shipping provide 4 hourly position reports through INMARSAT C or appropriate VHF channel.  
 106 Cancelled.  
 107 Cancelled.

**NAVAREA X WARNINGS**

Nil.

**Navigational warnings in force as at 080001UTC MAY 09.****Auscoast**

044 048 060 072 083 084 085 086 088 089 090 092 096 099 100 102 103 104 105

**Navarea X**

Nil.

**Summary of mobile drilling rigs as at 080001UTC MAY 09.**

<i>Name</i>	<i>Position</i>
West Atlas	12° 28'·23 S 124° 16'·50 E
Transocean Legend	14° 21'·75 S 121° 39'·55 E
Ocean Shield	14° 29'·68 S 128° 30'·58 E
Songa Venus	13° 33'·70 S 123° 25'·20 E
Sedco 703	13° 37'·00 S 122° 18'·00 E
Songa Mercur	19° 18'·60 S 116° 33'·41 E
Ensco 7500	19° 52'·00 S 114° 31'·00 E
Stena Clyde	20° 04'·18 S 115° 10'·45 E
Atwood Eagle	20° 21'·55 S 114° 39'·26 E
Nan Hai 6	21° 28'·31 S 113° 59'·10 E
Ocean Epoch	21° 31'·38 S 114° 06'·59 E

**NAVAREA XIV WARNINGS**

Nil.

**Navarea XIV warnings in force as at 080001UTC MAY 09.**

**2008** 085  
**2009** 014

*To accompany Australian Notice to Mariners 543/2009*

HISTORIC WRECK

The site of an historic wreck is protected from unauthorised interference. For details see Australian Seafarers Handbook AHP 20.

*Note for chart Aus 22*

*To accompany Australian Notice to Mariners 543/2009*

UNEXPLODED ORDNANCE

The area is safe for surface navigation only; it is not safe for anchoring, trawling or seabed activities. For details see Australian Notice to Mariners No 12.

*Note for chart Aus 22*

*To accompany Australian Notice to Mariners 543/2009*

UNEXPLODED ORDNANCE

The area is safe for surface navigation only; it is not safe for anchoring, trawling or seabed activities. For details see Australian Notice to Mariners No 12.

*Note for chart Aus 309*

*To accompany Australian Notice to Mariners 543/2009*

UNEXPLODED ORDNANCE

The area is safe for surface navigation only; it is not safe for anchoring, trawling or seabed activities. For details see Australian Notice to Mariners No 12.

*Note for chart AX 0309F*

*To accompany Australian Notice to Mariners 543/2009*

UNEXPLODED ORDNANCE

The area is safe for surface navigation only; it is not safe for anchoring, trawling or seabed activities. For details see Australian Notice to Mariners No 12.

*Note for chart AX 72309*

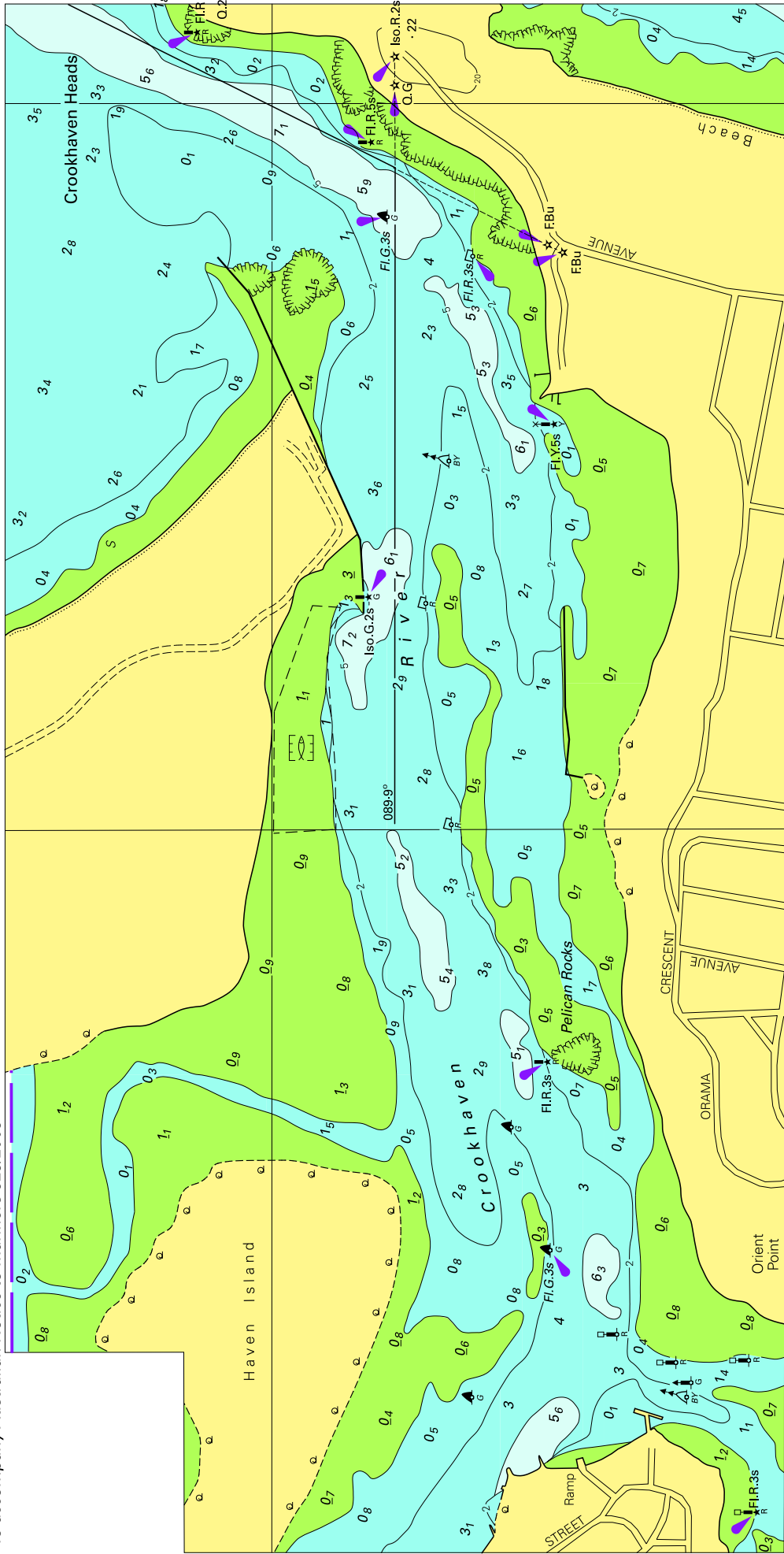
*To accompany Australian Notice to Mariners 544/2009*

AUSTRALIAN MARITIME JURISDICTION  
(AMJ)

The territorial sea baseline and the outer limit of Australian maritime zones shown on this chart are sourced from the Geoscience Australia product Australian Maritime Boundaries (AMB). For Australian maritime boundary information see Australia Seafarers Handbook AHP 20.

*Note for chart Aus 729*

To accompany Australian Notice to Mariners 529/2009

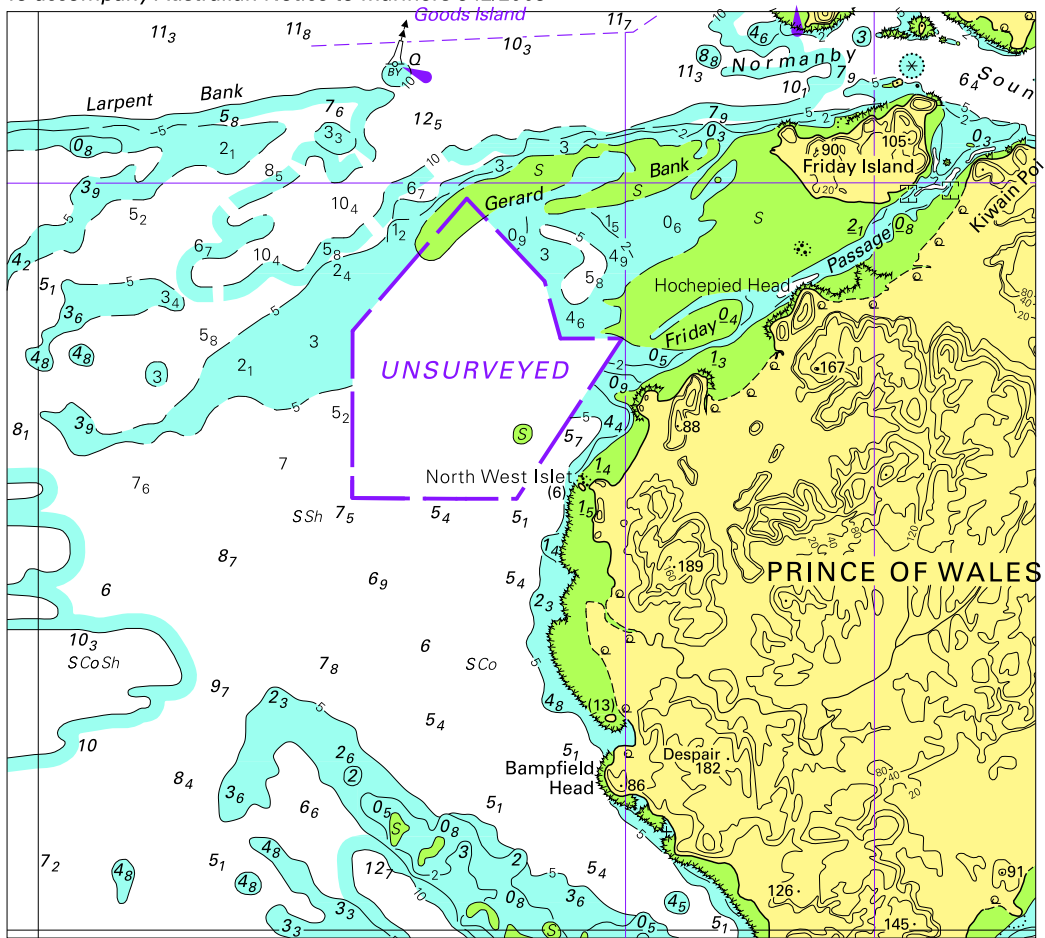


Block for chart Aus 191

© Commonwealth of Australia 2009

(260.0 x 131.2mm)

To accompany Australian Notice to Mariners 542/2009



Block for chart Aus 700

© Commonwealth of Australia 2009

(136.0 x 122.5mm)