



Australian Notices to Mariners are the authority for correcting Australian Charts and Publications

AUSTRALIAN NOTICES TO MARINERS

Notices 470 - 525

Published fortnightly by the Australian Hydrographic Service

Commodore R. NAIRN RAN
Hydrographer of Australia

-
- SECTIONS.**
- I. **Australian Notices to Mariners, including blocks and notes.**
 - II. **Hydrographic Reports.**
 - III. **Navigational Warnings.**

For Notices affecting Admiralty List of Lights and Fog Signals; List of Radio Signals; and Sailing Directions see **British Notices to Mariners.**

The substance of these notices should be inserted on the charts affected.

Bearings are referred to the true compass and are reckoned clockwise from North; those relating to lights are given as seen by an observer from seaward. Positions quoted in permanent notices relate to the horizontal datum for the chart(s). When preliminary or temporary notices affect multiple charts, positions will be provided in relation to only one horizontal datum and that datum will be specified. When the multiple charts do not have a common horizontal datum, mariners will be required to adjust the position(s) for those charts not on the specified datum. The range quoted for a light is its nominal range. Depths are with reference to the chart datum of each chart. Heights are above mean high water springs or mean higher high water, as appropriate.

The capital letter (P) or (T) after the number of any notice denotes a preliminary or temporary notice respectively, which are contained separately at the end of the permanent notices. A star () adjacent to the number of a notice indicates that the notice is based on original information.*

Mariners are particularly requested to notify the AUSTRALIAN HYDROGRAPHIC SERVICE, Locked Bag 8801 Wollongong, NSW 2500 (Fax 02-4223 6599, e-mail Hydro.NTM@defence.gov.au or, alternatively by filling in and submitting the **Hydrographic Notes forms located on the web site – www.hydro.gov.au), immediately on the discovery of new dangers or suspected dangers to navigation. For changes or defects in aids to navigation notify AusSAR (Fax 02-6230 6868 or email rccaus@amsa.gov.au).**

Copies of Australian notices are available free of charge from the Australian Hydrographic Service (AHS) website (www.hydro.gov.au) and through the eNotices (email) service (www.hydro.gov.au/enotices/enotices.htm).

Individual Notices may be copied for the purpose of inserting Notice substance on official charts and publications. Paper copies may be printed by chart agents and distributed to customers on a cost recovery basis. Participating chart agents are listed on the AHS website as providing a 'Paper Notices to Mariners' service (www.hydro.gov.au/prodserv/distributors/distributors.htm). Copies of the notices may not be sold for profit without prior written agreement.

IMPORTANT NOTICE

This edition of Notices to Mariners includes all significant information affecting AHS products which the AHS has become aware of since the last edition. All reasonable efforts have been made to ensure the accuracy and completeness of the information, including third party information, on which these updates are based. The AHS regards third parties from which it receives information as reliable, however the AHS cannot verify all such information and errors may therefore exist. The AHS does not accept liability for errors in third party information.

© Commonwealth of Australia 2009

This work is copyright. Apart from any use permitted under the Copyright Act 1968, no part may be reproduced by any process, adapted, communicated or commercially exploited without prior written permission from The Commonwealth represented by the Australian Hydrographic Service.

NUMERICAL INDEX OF NOTICES TO MARINERS

Edition No 8

Notices	Aus Chart, ENC Cell, AHP
470.....	Aus 221, 299, 361, 489, 669, 716, 813, AU302148, 303145, 303148, 338138, 433132, 434120, 434122, 5177P2, 5651P1, 5652P1, 5652P2, 5669P1
471.....	Amendment to Australian Notice to Mariners No 2
472.....	Aus 192
473.....	Aus 256, 257
474.....	Aus 259
475.....	Aus 280
476.....	Aus 376, 377, 837, 840, AX 60377
477.....	Aus 680
478.....	Aus 546, 676
479.....	Aus 666
480.....	Aus 301, 376
481.....	Aus 292, 293, 294, 296
482.....	Aus 6
483.....	Aus 717
484.....	Aus 20, 309, 722, AX 0309F, 72309, 72722
485.....	Aus 725
486.....	Aus 400
487.....	Aus 81
488.....	Aus 333, 417, 752
489.....	Aus 117, AX 70117
490.....	Aus 422
491.....	Aus 790, 791
492.....	Aus 171, 796
493.....	Aus 179, 800
494.....	Aus 182
495(T).....	Aus 193, 807, 808, AX 0808E, 60193, 67192, 70193, 5XX193
496 (T).....	Aus 807, 808, AX 0808E AU435150
497(T).....	Aus 198, 199, AU5198X9
498(T).....	Aus 207, 208, AU5XX208
499(T).....	Aus 236
500(T).....	Aus 236, 237, AU5237X8
501(T).....	Aus 235, 236
502(T).....	Aus 235
503(T).....	Aus 235, 365
504(T).....	Aus 235
505(T).....	Aus 244, 245, 246, AU5244X5
506(T).....	Aus 244, 245, AU5244X5
507(T).....	Aus 244, 245, AU5244X5
508(T).....	Aus 247, 819, AU424150
509(T).....	Aus 260, 261, 367, 822, AX 60260, AU423150, 5261P2
510(T).....	Aus 249, 250, AU5250P2
511(T).....	Aus 262, 263, 264, 830, AX 63262, AU417145, 5262X4
512(T).....	Aus 6
513(T).....	Aus 6
514(T).....	Aus 26, AX 72026
515(T).....	Aus 57, 58, 59, 327, 328, 415, 416, 741, 742, AX 0415F, AU320115, 421115, 421116
516(T).....	Aus 64, 743, 744, AU422114
517(T).....	Aus 81, 751
518(T).....	Aus 334, 335, 755, 756, AX 0334E, AX 0755E, AU434115
519(T).....	Aus 346, 347
520(T).....	Aus 347
521(T).....	Aus 178, AU5178P4
522(T).....	Aus 172
523(P).....	Aus 164, 422, 487, 799, AU442146
524(P).....	Aus 163, 422, 487, 799, AU442145
525(P).....	Aus 422, 487, 790, 799, AU441145

NUMERICAL INDEX OF CHARTS AFFECTED

Edition No 8

Aus Chart	Notices	Aus Chart	Notices
Aus 6.....	482, 512(T), 513(T)	Aus 400	486
Aus 20.....	484	Aus 415	515(T)
Aus 26.....	514(T)	Aus 416	515(T)
Aus 57.....	515(T)	Aus 417	488
Aus 58.....	515(T)	Aus 422	490, 523(P), 524(P), 525(P)
Aus 59.....	515(T)	Aus 487	523(P), 524(P), 525(P)
Aus 64.....	516(T)	Aus 489	470
Aus 81.....	487, 517(T)	Aus 546	478
Aus 117.....	489	Aus 666	479
Aus 163.....	524(P)	Aus 669	470
Aus 164.....	523(P)	Aus 676	478
Aus 171.....	492	Aus 680	477
Aus 172.....	522(T)	Aus 716	470
Aus 178.....	521(T)	Aus 717	483
Aus 179.....	493	Aus 722	484
Aus 182.....	494	Aus 725	485
Aus 192.....	472	Aus 741	515(T)
Aus 193.....	495(T)	Aus 742	515(T)
Aus 198.....	497(T)	Aus 743	516(T)
Aus 199.....	497(T)	Aus 744	516(T)
Aus 207.....	498(T)	Aus 751	517(T)
Aus 208.....	498(T)	Aus 752	488
Aus 221.....	470	Aus 755	518(T)
Aus 235.....	501(T), 502(T), 503(T), 504(T)	Aus 756	518(T)
Aus 236.....	499(T), 500(T), 501(T)	Aus 790	491, 525(P)
Aus 237.....	500(T)	Aus 791	491
Aus 244.....	505(T), 506(T), 507(T)	Aus 796	492
Aus 245.....	505(T), 506(T), 507(T)	Aus 799	523(P), 524(P), 525(P)
Aus 246.....	505(T)	Aus 800	493
Aus 247.....	508(T)	Aus 807	495(T), 496(T)
Aus 249.....	510(T)	Aus 808	495(T), 496(T)
Aus 250.....	510(T)	Aus 813	470
Aus 256.....	473	Aus 819	508(T)
Aus 257.....	473	Aus 822	509(T)
Aus 259.....	474	Aus 830	511(T)
Aus 260.....	509(T)	Aus 837	476
Aus 261.....	509(T)	Aus 840	476
Aus 262.....	511(T)	AX 0309F.....	484
Aus 263.....	511(T)	AX 0334E	518(T)
Aus 264.....	511(T)	AX 0415F	515(T)
Aus 280.....	475	AX 0755E	518(T)
Aus 292.....	481	AX 0808E	495(T), 496(T)
Aus 293.....	481	AX 60193.....	495(T)
Aus 294.....	481	AX 60260.....	509(T)
Aus 296.....	481	AX 60377.....	476
Aus 299.....	470	AX 63262.....	511(T)
Aus 301.....	480	AX 67192.....	495(T)
Aus 309.....	484	AX 70117.....	489
Aus 327.....	515(T)	AX 70193.....	495(T)
Aus 328.....	515(T)	AX 72026.....	514(T)
Aus 333.....	488	AX 72309.....	484
Aus 334.....	518(T)	AX 72722.....	484
Aus 335.....	518(T)		
Aus 346.....	519(T)		
Aus 347.....	519(T), 520(T)		
Aus 361.....	470		
Aus 365.....	503(T)		
Aus 367.....	509(T)		
Aus 376.....	476, 480		
Aus 377.....	476		

ENC Cell	Notices
AU302148	470
AU303145	470
AU303148	470
AU320115	515(T)
AU338138	470
AU417145	511(T)
AU421115	515(T)
AU421116	515(T)
AU422114	516(T)
AU423150	509(T)
AU424150	508(T)
AU433132	470
AU434115	518(T)
AU434120	470
AU434122	470
AU435150	496(T)
AU441145	525(P)
AU442145	524(P)
AU442146	523(P)
AU5177P2	470
AU5178P4	521(T)
AU5XX193	495(T)
AU5198X9	497(T)
AU5XX208	498(T)
AU5237X8	500(T)
AU5244X5	505(T), 506(T), 507(T)
AU5250P2	510(T)
AU5261P2	509(T)
AU5262X4	511(T)
AU5651P1	470
AU5652P1	470
AU5652P2	470
AU5669P1	470

470 AUSTRALIA - Product

Australian Hydrographic Service (AA399053, AA401238, AA401284, AA389695)

New Chart

<i>Chart</i>	<i>Published</i>	<i>Title and description of amendments</i>	<i>Scale</i>	<i>Index Chart</i>	<i>Price</i>
Aus 221	13/03/2009	Australia - East Coast - New South Wales - Solitary Islands 29° 52' 00" S - 30° 20' 00" S 153° 08' 00" E - 153° 28' 18" E <i>New chart providing improved coverage of the Solitary Islands.</i>	1:50 000	Aus 5001	\$35.00
Aus 669	13/03/2009	Papua New Guinea - New Ireland - North Coast - Plans in Papua New Guinea (Sheet 11) Plans: Tabar Islands 2° 30' 09" S - 2° 52' 46" S 151° 45' 46" E - 152° 12' 18" E Fangalawa Bay 2° 47' 04" S - 2° 53' 00" S 151° 10' 30" E - 151° 19' 19" E Pigibut Bay 2° 38' 21" S - 2° 38' 48" S 152° 01' 09" E - 152° 01' 37" E <i>New chart providing improved coverage of Fangalawa Bay, Tabar Islands including Pigibut Bay.</i>	1:75 000 1:25 000 1:5 000	Aus 5000	\$35.00

New Edition

<i>Chart</i>	<i>Published</i>	<i>Title and description of amendments</i>	<i>Scale</i>	<i>Index Chart</i>	<i>Price</i>
Aus 716	13/03/2009	Australia - North Coast - Northern Territory - Gugari Rip to Cadell Strait including Arnhem Bay <i>New edition to rectify vertical datum anomaly and updated for maritime boundaries.</i>	1:150 000	Aus 5001	\$35.00

New Electronic Navigation Chart (Seafarer ENC)

<i>Cell Name</i>	<i>Released</i>	<i>Title</i>
AU302148	April 2009	Bismark Sea - Cell 14
AU303145	April 2009	Bismark Sea - Cell 11
AU303148	April 2009	Bismark Sea - Cell 12
AU338138	April 2009	South Australia - Southern Ocean - Cell 10
AU433132	April 2009	South Australia - Nuyts Reefs to Point Sinclair Including Yatala Reef
AU434120	April 2009	Western Australia - Mary Ann Haven To Starvation Boat Harbour
AU434122	April 2009	Western Australia - Rossiter Bay To Tagon Point
AU5177P2	April 2009	Tasmania - Hells Gates
AU5651P1	April 2009	Papua New Guinea - North Coast - Wewak Wharves
AU5652P1	April 2009	Papua New Guinea - North Coast - Aitape
AU5652P2	April 2009	Papua New Guinea - North Coast - Vanimo Harbour
AU5669P1	April 2009	South Pacific Ocean - Simberi Island - Pigibut Bay

New Chart to be published shortly

<i>Chart</i>	<i>Title</i>	<i>Scale</i>	<i>Expected Publication Date</i>	<i>Expected Stock Availability</i>
Aus 813	Australia - East Coast - New South Wales - Clarence River to Point Danger	1:150 000	24 April 2009	1 June 2009

New Edition to be published shortly

<i>Chart</i>	<i>Title</i>	<i>Scale</i>	<i>Expected Publication Date</i>	<i>Expected Stock Availability</i>
Aus 299	Australia - North Coast - Torres Strait - Approaches to Thursday Island <i>Note: previously advised in Edition 3.</i>	1:12 500	24 April 2009	1 June 2009

470 AUSTRALIA – Product (*continued*)

Chart permanently withdrawn

Chart On publication of new chart
Aus 716 Aus 716

Chart to be permanently withdrawn without replacement

Chart On publication of new chart
Aus 361 Aus 489

For further details refer to the AHS website at www.hydro.gov.au for new edition and new chart stock arrival information.

When placing orders with a chart agent, mariners should advise whether their order pertains to the current edition or the new edition.

471 AUSTRALIA - Product - Amendment to Australian Notice to Mariners No 2

Australian Hydrographic Service (AA398304, AA400800)

Page 15

Amend Bogerd Martin (India) Pvt. Ltd details to read:

Global Charts & Nav aids Pvt. Ltd

1A Goa Mansion, Ground Floor
58 Dr. Sunderlal Bahl Path (Goa Street)
Fort Mumbai 400 001

Telephone (91 22) 262 6380
(91 22) 262 6318
Fax (91 22) 262 1488
Email sales@globalcharts.in

C

Page 16

Insert new chart agent:

SRI LANKA

Marine Overseas Agency (PVT) Ltd

3rd Floor, Paul VI Centre
24 Malwatte Road
Colombo II

Telephone (94) 11 232 6262
Fax (94) 11 233 0689
Email marino@slt.lk

C

472* AUSTRALIA - NEW SOUTH WALES - Twofold Bay - ZOC limit; legend

Australian Hydrographic Service (AA399151, AA399152)

Aus 192 [132/2009]

Insert	magenta dashed line, between	37° 02'.62 S	149° 53'.17 E
		37° 02'.13 S	149° 52'.92 E
	legend, C, centred on	37° 02'.26 S	149° 53'.08 E

473* AUSTRALIA - QUEENSLAND - Townsville - Wreck

Former Notice - 281(T)/2006 is cancelled

Maritime Safety Queensland Notice 437(T)/2005 (AA157692, AA399138, AA399139)

Aus 256 [292/2009]

Insert	#	19° 14'.70 S	146° 49'.80 E
--------	---	--------------	---------------

Delete	depth, 0 ₉ m	19° 14'.7 S	146° 49'.8 E
--------	-------------------------	-------------	--------------

Aus 257 [241/2009]

Insert	#	19° 14'.700 S	146° 49'.801 E
--------	---	---------------	----------------

Substitute	beacon for feature	19° 14'.66 S	146° 49'.98 E
------------	--------------------	--------------	---------------

474* AUSTRALIA - QUEENSLAND - Lucinda - Beacon
Maritime Safety Queensland (DHDB 1185143)

Aus 259 [293/2009]

Substitute beacon with triangular topmark apex up, for light 18° 31'.4 S 146° 19'.7 E

475* AUSTRALIA - QUEENSLAND - Lytton Reef - Unsurveyed boundary
UKHO (AA400202)

Aus 280 (plan, Magpie Reef to Eden Reef) [408/2009]

Insert unsurveyed boundary, between 13° 50'.58 S 143° 53'.26 E
13° 49'.84 S 143° 50'.94 E

476* AUSTRALIA - QUEENSLAND - Derder Reef to Maer Island - Depths
Tenix LADS Corporation (DHDB 1059353)

Aus 376 [409/2009]

Insert depth, 4₁m (a) 10° 02'.27 S 143° 44'.83 E
depth, 4₅m, (b) with contour enclosing (a) and (b) 10° 01'.66 S 143° 44'.19 E
depth, 0₅m, enclosed by contour 10° 02'.79 S 143° 29'.81 E

Delete rock and enclosing danger circle 10° 01'.7 S 143° 44'.3 E
rock and enclosing danger circle 10° 01'.8 S 143° 45'.1 E

Aus 377 [295/2009]

Insert depth, 2₅m, enclosed by contour 9° 53'.97 S 144° 02'.62 E
depth, 0₂m, enclosed by contour 9° 52'.97 S 143° 58'.60 E
depth, 0₉m, enclosed by contour 9° 52'.34 S 143° 58'.43 E
depth, 4₁m (a) 10° 02'.27 S 143° 44'.83 E
depth, 4₅m, (b) with contour enclosing (a) and (b) 10° 01'.66 S 143° 44'.19 E
depth, 6₂m, enclosed by contour 9° 52'.74 S 143° 56'.70 E
depth, 0₅m, enclosed by contour 10° 02'.79 S 143° 29'.81 E

Delete rock and semi enclosing danger circle 9° 54'.1 S 144° 02'.6 E
depth, 10₆m and semi enclosing contour 9° 53'.7 S 144° 02'.7 E
shoal area, centred on 9° 53'.0 S 143° 58'.4 E
depth, 2₂m 9° 52'.3 S 143° 58'.3 E
rock and enclosing danger circle 10° 01'.7 S 143° 44'.3 E
rock and enclosing danger circle 10° 01'.8 S 143° 45'.1 E
rock and enclosing danger circle 9° 52'.5 S 143° 56'.7 E
shoal area, centred on 10° 02'.8 S 143° 29'.8 E

Aus 837 [1056/2007]

Insert depth, 0₉m, enclosed by contour 9° 52'.34 S 143° 58'.43 E
depth, 0₂m, enclosed by contour 9° 52'.97 S 143° 58'.60 E
depth, 2₅m, enclosed by contour 9° 53'.97 S 144° 02'.62 E
depth, 4₅m, enclosed by contour 10° 01'.66 S 143° 44'.19 E
depth, 5₉m, enclosed by contour 10° 01'.74 S 143° 45'.14 E
depth, 4₁m, enclosed by contour 10° 02'.27 S 143° 44'.83 E
depth, 1₉m, enclosed by contour 10° 04'.95 S 143° 30'.70 E
depth, 0₅m, enclosed by contour 10° 02'.79 S 143° 29'.81 E
depth, 6₂m, enclosed by contour 9° 52'.74 S 143° 56'.70 E

Delete depth, 2₂m 9° 52'.3 S 143° 58'.3 E
shoal area, centred on 9° 53'.0 S 143° 58'.4 E
rock and enclosing danger circle 9° 54'.1 S 144° 02'.6 E
depth, 10₆m and semi enclosing contour 9° 53'.9 S 144° 02'.6 E
rocks and enclosing danger circle, centred on 10° 01'.7 S 143° 44'.3 E
rock and enclosing danger circle 10° 01'.8 S 143° 45'.1 E
rocks and enclosing danger circle, centred on 10° 05'.0 S 143° 30'.7 E
rocks and enclosing danger circle, centred on 10° 02'.8 S 143° 29'.8 E
rock and enclosing danger circle, with contour 9° 52'.6 S 143° 56'.7 E

476* AUSTRALIA - QUEENSLAND - Derder Reef to Maer Island – Depths (continued)**Aus 840 [295/2009]**

Insert	depth, 2 ₅ m, enclosed by contour	9° 53'.97 S	144° 02'.62 E
	depth, 0 ₂ m, enclosed by contour	9° 52'.97 S	143° 58'.60 E
	depth, 0 ₉ m, enclosed by contour	9° 52'.34 S	143° 58'.43 E
	depth, 6 ₂ m, enclosed by contour	9° 52'.74 S	143° 56'.70 E
Delete	rock and enclosing danger circle	9° 54'.1 S	144° 02'.6 E
	depth, 10 ₆ m and semi enclosing contour	9° 53'.9 S	144° 02'.6 E
	shoal area, centred on	9° 53'.0 S	143° 58'.4 E
	depth, 2 ₂ m	9° 52'.3 S	143° 58'.3 E
	rock and enclosing danger circle, with contour	9° 52'.6 S	143° 56'.7 E

AX 60377 [295/2009]

Insert	depth, 2 ₅ m, enclosed by contour	9° 53'.97 S	144° 02'.62 E
	depth, 0 ₉ m, enclosed by contour	9° 52'.34 S	143° 58'.43 E
	depth, 0 ₂ m, enclosed by contour	9° 52'.97 S	143° 58'.60 E
	depth, 4 ₁ m (a)	10° 02'.27 S	143° 44'.83 E
	depth, 6 ₂ m, enclosed by contour	9° 52'.74 S	143° 56'.70 E
	depth, 0 ₅ m, enclosed by contour	10° 02'.79 S	143° 29'.81 E
	depth, 4 ₅ m, (b) with contour enclosing (a) and (b)	10° 01'.66 S	143° 44'.19 E
Delete	rock and semi enclosing danger circle	9° 54'.1 S	144° 02'.6 E
	depth, 10 ₆ m and semi enclosing contour	9° 53'.7 S	144° 02'.7 E
	depth, 2 ₂ m	9° 52'.3 S	143° 58'.3 E
	shoal area, centred on	9° 53'.0 S	143° 58'.4 E
	rock and enclosing danger circle	10° 01'.7 S	143° 44'.3 E
	rock and enclosing danger circle	10° 01'.8 S	143° 45'.1 E
	rock and enclosing danger circle	9° 52'.5 S	143° 56'.7 E
	shoal area, centred on	10° 02'.8 S	143° 29'.8 E

477* PAPUA NEW GUINEA - Rabaul - Lights; navline

HMAS *Benalla* (AA390237), National Maritime Safety Authority PNG Notice 12/2009 (AA389561, AA399098)

Aus 680 [192/2009]

Insert	light, Fl.5s 7M	4° 11'.71 S	152° 10'.08 E
	a dashed line in a direction 169.4° for a distance of 0.81M, thence a continuous line for 3.24M, with legend 349.4°, emanating from light	4° 11'.71 S	152° 10'.08 E
Amend	light range to 10M	4° 11'.94 S	152° 10'.13 E
Delete	light	4° 12'.0 S	152° 10'.1 E
	dashed and continuous line with legend, emanating from light	4° 11'.9 S	152° 10'.1 E

Aus 680 (plan, Simpson and Matupit Harbours)

Insert	light, Fl.5s 38m 7M	4° 11'.705 S	152° 10'.081 E
	a dashed line in a direction 169.4° for a distance of 1500m, thence a continuous line for 6000m, with legend 349.4°, emanating from	4° 11'.705 S	152° 10'.081 E
Amend	light range to 10M	4° 11'.94 S	152° 10'.13 E
Delete	light	4° 12'.04 S	152° 10'.14 E
	dashed and continuous line with legend, emanating from light	4° 11'.94 S	152° 10'.12 E

478* PAPUA NEW GUINEA - Tavanatangir Harbour - Chart limits; plan withdrawn
Australian Hydrographic Service (AA386065)

Aus 546 [187/2008]

Insert	magenta limits, with legend <i>Aus 672</i> in NE corner, between	4° 49'.77 S	151° 38'.27 E
		4° 49'.77 S	151° 41'.70 E
		4° 45'.50 S	151° 41'.70 E
		4° 45'.50 S	151° 38'.27 E
		4° 49'.77 S	151° 38'.27 E

Delete	magenta limits, with legend <i>Aus 676</i> , centred on	4° 48'.3 S	151° 41'.0 E
--------	---	------------	--------------

Aus 676 (plan, Tavanatangir Harbour) [40/2008]

Delete	plan, centred on	4° 48'.0 S	151° 41'.0 E
--------	------------------	------------	--------------

479* PAPUA NEW GUINEA - Kavieng Harbour - Wrecks

D Amon (AA397667 - AA397671)

Aus 666 (plan, Kavieng Harbour) [297/2009]

Insert	stranded wreck	2° 35'.023 S	150° 47'.370 E
	stranded wreck	2° 34'.871 S	150° 47'.380 E
	depth, 3m, enclosed by danger circle with legend <i>Wk</i>	2° 34'.171 S	150° 47'.140 E

Substitute	depth, 0.5m, for depth, 1.5m	2° 34'.80 S	150° 47'.46 E
------------	------------------------------	-------------	---------------

Delete	depth, 3m	2° 34'.86 S	150° 47'.39 E
--------	-----------	-------------	---------------

480* AUSTRALIA - TORRES STRAIT - Friday Island - Depth

HMAS *Melville* (DHDB 1124368)

Aus 301 [412/2009]

Substitute	depth, 3m, for depth, 3.7m	10° 34'.5 S	142° 10'.0 E
------------	----------------------------	-------------	--------------

Aus 376 [476/2009]

Substitute	depth, 3m, for depth, 3.7m	10° 34'.4 S	142° 09'.9 E
------------	----------------------------	-------------	--------------

481* AUSTRALIA - TORRES STRAIT - Friday Passage - Depths; contour

Australian Hydrographic Service (AA399149), DGST (DHDB 924349)

Aus 292 [363/2009]

Insert	accompanying block	10° 36'.0 S	142° 09'.0 E
--------	--------------------	-------------	--------------

Aus 293 [411/2009]

Insert	contour to enclose depth, 2m	10° 35'.51 S	142° 11'.66 E
--------	------------------------------	--------------	---------------

Aus 294 [363/2009]

Insert	accompanying block	10° 38'.0 S	142° 07'.0 E
--------	--------------------	-------------	--------------

Aus 296 [298/2009]

Insert	accompanying block	10° 38'.0 S	142° 07'.0 E
--------	--------------------	-------------	--------------

482* AUSTRALIA - QUEENSLAND - Karumba - Alligator Point - Light buoy

Former Notice - 219(T)/2009 is cancelled

Maritime Safety Queensland Notice 229/2009 (AA399707)

Aus 6 [149/2009]

Substitute	special cylindrical light buoy, Fl. Y.2.5s, with topmark for light beacon	17° 27'.58 S	140° 48'.27 E
------------	---	--------------	---------------

483* AUSTRALIA - NORTHERN TERRITORY - Cadell Strait to Cape Stewart - Territorial sea baseline; territorial sea limit; contiguous zone limit; chart note

Geoscience Australia (DHDB 1223443)

Aus 717 [851/2005]

Insert	accompanying block straight territorial sea baseline with base points, between	11° 37'.0 S	134° 40'.0 E
		11° 54'.79 S	135° 07'.91 E
		11° 55'.10 S	135° 07'.38 E
Substitute	accompanying note for AMJ note	12° 14'.0 S	134° 45'.0 E
Delete	straight territorial sea baseline with base points, between	11° 55'.4 S	135° 07'.3 E
		11° 54'.7 S	135° 08'.5 E

484* AUSTRALIA - NORTHERN TERRITORY - Southwest Vernon Island - Rock; depth

HMAS Shepparton and Benalla (DHDB 1128947)

Aus 20 [1075/2008]

Insert	depth, 2 ₂ m, and extend contour W to enclose	12° 07'.66 S	131° 04'.64 E
Delete	depth, 2 ₇ m	12° 07'.7 S	131° 04'.7 E

Aus 309 [364/2009]

Substitute	depth, 1 ₄ m, for depth, 1 ₉ m	12° 07'.6 S	131° 04'.8 E
	rock which covers and uncovers for rock	12° 07'.4 S	131° 04'.2 E

Aus 722 [414/2009]

Insert	rock which covers and uncovers, enclosed by danger circle with legend (Q ₃)	12° 07'.45 S	131° 04'.32 E
	depth, 1 ₄ m, and extend contour W to enclose	12° 07'.58 S	131° 04'.71 E
Delete	rock and enclosing danger circle	12° 07'.4 S	131° 04'.2 E
	depth, 1 ₉ m	12° 07'.5 S	131° 04'.8 E

AX 0309F [364/2009]

Substitute	depth, 1 ₄ m, for depth, 1 ₉ m	12° 07'.6 S	131° 04'.8 E
	rock which covers and uncovers with legend (Q ₃) for rock	12° 07'.4 S	131° 04'.2 E

AX 72309 [364/2009]

Substitute	depth, 1 ₄ m, for depth, 1 ₉ m	12° 07'.6 S	131° 04'.8 E
	rock which covers and uncovers with legend (Q ₃) for rock	12° 07'.4 S	131° 04'.2 E

AX 72722 [414/2009]

Insert	rock which covers and uncovers, enclosed by danger circle with legend (Q ₃)	12° 07'.45 S	131° 04'.32 E
	depth, 1 ₄ m, and extend contour W to enclose	12° 07'.58 S	131° 04'.71 E
Delete	rock and enclosing danger circle	12° 07'.4 S	131° 04'.2 E
	depth, 1 ₉ m	12° 07'.5 S	131° 04'.8 E

485* AUSTRALIA - NORTHERN TERRITORY - Cape Dombey to Cape Hay - Territorial sea baseline; chart note
Geoscience Australia (DHDB 1233749)

Aus 725 [851/2005]

Substitute	accompanying note for AMJ note	14° 17'.5 S	129° 46'.0 E
Delete	territorial sea baseline with base points, between	13° 53'.8 S	129° 42'.2 E
		13° 59'.1 S	129° 35'.3 E
	territorial sea baseline with base points, between	13° 59'.2 S	129° 35'.2 E
		14° 01'.9 S	129° 31'.2 E
	territorial sea baseline with base points, between	14° 02'.0 S	129° 31'.0 E
		14° 02'.6 S	129° 29'.5 E

486* INDIAN OCEAN - Christmas Island - Chart note

Australian Hydrographic Service (AA396895)

Aus 400 [1062/2007]

Substitute	accompanying note for AMJ note	9° 59'.0 S	104° 28'.0 E
------------	--------------------------------	------------	--------------

487* AUSTRALIA - WESTERN AUSTRALIA - Geraldton - Infrastructure

Former Notice - 174(T)/2007 is cancelled

Geraldton Port Authority (AA372772, AA372774)

Aus 81 (plan, Port of Geraldton) [422/2009]

Insert	accompanying block	28° 46'.3 S	114° 35'.9 E
--------	--------------------	-------------	--------------

488* AUSTRALIA - WESTERN AUSTRALIA - Port Denison - Lights

Australian Hydrographic Service (AA398560, AA398561)

Aus 333 [422/2009]

Amend	light range to 9M	29° 16'.1 S	114° 55'.4 E
	light range to 15M	29° 15'.9 S	114° 55'.9 E

Aus 417 [422/2009]

Amend	light range to 15M	29° 16'.1 S	114° 55'.4 E
-------	--------------------	-------------	--------------

Aus 752 [1184/2008]

Amend	light range to 9M	29° 16'.1 S	114° 55'.4 E
	light range to 15M	29° 15'.9 S	114° 55'.9 E

Aus 752 (plan, Port Denison)

Amend	light range to 9M	29° 16'.05 S	114° 55'.39 E
-------	-------------------	--------------	---------------

489* AUSTRALIA - WESTERN AUSTRALIA - Woodman Point - Mooring buoys

Fremantle Ports Notice 4/2009 (AA397955)

Aus 117 [155/2009]

Insert	mooring buoy	32° 07'.811 S	115° 45'.062 E
	mooring buoy	32° 07'.758 S	115° 45'.047 E

Delete	depth, 2 ₅ m	32° 07'.81 S	115° 45'.06 E
--------	-------------------------	--------------	---------------

AX 70117 [155/2009]

Insert	mooring buoy	32° 07'.811 S	115° 45'.062 E
	mooring buoy	32° 07'.758 S	115° 45'.047 E

Delete	depth, 2 ₅ m	32° 07'.81 S	115° 45'.06 E
--------	-------------------------	--------------	---------------

490* AUSTRALIA - VICTORIA - Cape Otway to Gabo Island - Corner coordinate
 Australian Hydrographic Service (AA397896)

Aus 422 [375/2009]

Amend corner coordinate to 45° 11' 00" S 45° 10'.5 S 143° 35'.5 E

491* AUSTRALIA - TASMANIA - West Point to Granville Harbour - ESSA limit; contiguous zone limit; territorial sea limit; chart notes

Department of the Environment, Water, Heritage and the Arts, Geoscience Australia (DHDB 1233782)

Aus 790 [339/2008]

Insert	accompanying note	40° 20'.5 S	145° 32'.0 E
	ESSA limit with legend <i>ESSA (see Note)</i> , between	40° 53'.00 S	144° 10'.22 E
		40° 31'.75 S	144° 15'.45 E
		40° 31'.75 S	144° 24'.25 E
		40° 53'.00 S	144° 19'.54 E
	ESSA limit with legend <i>ESSA (see Note)</i> , between	40° 19'.0 S	144° 49'.5 E
		40° 08'.5 S	144° 49'.5 E
		40° 08'.5 S	145° 09'.0 E
		40° 19'.0 S	145° 09'.0 E
		40° 19'.0 S	144° 49'.5 E

Substitute accompanying note for AMJ note 40° 18'.0 S 145° 32'.0 E

Aus 791 [967/2008]

Insert	accompanying note	41° 02'.0 S	144° 50'.0 E
	accompanying block	40° 53'.5 S	144° 13'.5 E
	territorial sea limit, between	42° 03'.61 S	144° 57'.61 E
		42° 03'.73 S	144° 57'.80 E
		42° 04'.12 S	144° 57'.37 E

Substitute accompanying note for AMJ note 40° 58'.0 S 144° 59'.5 E

Delete territorial sea limit, between 42° 03'.6 S 144° 57'.6 E
 42° 04'.1 S 144° 57'.0 E

492* AUSTRALIA - TASMANIA - Frederick Henry Bay - Whale Rock - Light beacon

Marine and Safety Tasmania Notice M58/2009 (AA399316, AA399415 - AA399418)

Aus 171 [313/2009]

Insert isolated danger light beacon, *Fl(2)6s 7m 2M*, with topmark 42° 52'.746 S 147° 35'.881 E

Delete rock which does not cover 42° 52'.72 S 147° 35'.88 E
 underwater rock 42° 52'.76 S 147° 35'.88 E

Aus 796 [69/2009]

Substitute isolated danger light beacon, *Fl(2)6s*, with topmark for rock which does not cover and danger circle 42° 52'.7 S 147° 35'.9 E

493* AUSTRALIA - TASMANIA - Flinders Island - Lady Barron - Navline; light sectors

Marine and Safety Tasmania Notice M59/2009 (AA399793)

Aus 179 (plan, Franklin Sound) [527/2007]

Insert	green sector 282.9° - 285.2° (2.3°), white sector 285.2° - 285.7° (0.5°) and red sector 285.7° - 287.9° (2.2°), emanating from light	40° 12'.45 S	148° 14'.76 E
	a dashed line in a direction 105.5° for a distance of 5.3M, thence a continuous line for 4.7M, with legend		
	<i>Dir</i> 285.5°, emanating from light	40° 12'.45 S	148° 14'.76 E
	continuous line, between	40° 13'.91 S	148° 21'.21 E
		40° 13'.88 S	148° 21'.43 E
Delete	sectors, emanating from light	40° 12'.4 S	148° 14'.8 E
	dashed and continuous line with legend, emanating from light	40° 12'.5 S	148° 14'.8 E

Aus 800 [304/2008]

Insert	green sector 282.9° - 285.2° (2.3°), white sector 285.2° - 285.7° (0.5°) and red sector 285.7° - 287.9° (2.2°), emanating from light	40° 12'.45 S	148° 14'.76 E
	a dashed line in a direction 105.5° for a distance of 5.3M, thence a continuous line for 4.7M, with legend		
	<i>Dir</i> 285.5°, emanating from light	40° 12'.45 S	148° 14'.76 E
Delete	sectors, emanating from light	40° 12'.5 S	148° 14'.8 E
	dashed and continuous line with legend, emanating from light	40° 12'.5 S	148° 14'.8 E

494* AUSTRALIA - VICTORIA - Port Welshpool - Lewis Channel - Light beacons

Australian Hydrographic Service (AA399623),

Aus 182 (plan, Lewis Channel) [207/2009]*On certain copies only*

Insert	light flare	38° 42'.468 S	146° 26'.764 E
	starboard lateral pillar light buoy, <i>F(2)G.5s No15</i> , without topmark	38° 42'.776 S	146° 26'.169 E
Substitute	starboard lateral light beacon, <i>Q.G No13</i> , with topmark for beacon	38° 42'.98 S	146° 25'.95 E
	starboard lateral pillar light buoy <i>LFI.G.6s No11</i> , for light buoy	38° 43'.23 S	146° 25'.75 E
Delete	light buoy	38° 42'.77 S	146° 26'.70 E
	depth, 1.5m	38° 42'.80 S	146° 26'.14 E

495(T)/2009 AUSTRALIA - NEW SOUTH WALES - Jervis Bay - Bowen Island - Scientific instruments

Former Notice - 316(T)/2009 is cancelled

Date - Until 17 July 2009

Geoscience Australia (AA399340)

Subsurface scientific instruments exist in positions 35° 06'.2 S 150° 45'.9 E and 35° 06'.4 S 150° 45'.0 E.

Chart temporarily affected - Aus 193 - Aus 807 - Aus 808 – AX 0808E – AX 60193 – AX 67192 – AX 70193 - AU5XX193

496(T)/2009 AUSTRALIA - NEW SOUTH WALES - Shoalhaven Bight - Unexploded ordnance

Department of Defence (AA399927)

Unexploded ordnance exists in positions 34° 56'.60 S 150° 50'.47 E and 34° 57'.99 S 150° 50'.35 E.

Mariners are advised to navigate with caution in the area.

Chart temporarily affected - Aus 807 - Aus 808 – AX 0808E - AU435150

497(T)/2009 AUSTRALIA - NEW SOUTH WALES - Botany Bay - Scientific instrument

Former Notice - 76(T)/2009 is cancelled

Date - Until 31 July 2009

Cardno Lawson Treloar (AA399802)

A special light buoy, *Fl(5)Y.20s*, exists in position 33° 59'.32 S 151° 11'.07 E.

Chart temporarily affected - Aus 198 - Aus 199 - AU5198X9

498(T)/2009 AUSTRALIA - NEW SOUTH WALES - Newcastle - Depth information*Former Notice - 428(T)/2009 is cancelled*

Newcastle Port Corporation (AA401251)

Available depths as at 22 April 2009:

<i>Berth</i>	<i>Metres</i>
Western Basin 3	11.6
Western Basin 4	11.6
Eastern Basin 1	11.4
Eastern Basin 2 North of Ch 450	11.6
Eastern Basin 2 South of Ch 450	11.3
Dockyard 2 (Dredge)	3.9
Channel Berth (formerly Dockyard 4)	8.3
* Dyke 1	12.0
Dyke 2	12.8
Dyke 4	16.5
* Dyke 5	16.4
Dyke 6	6.5
BHP Wharf 6 to Ch 1050	7.9
Kooragang 2	11.6
Kooragang 2 North Dolphin	11.0
Kooragang 2 South Dolphin	10.9
Kooragang 3	13.0
Kooragang 4	16.5
Kooragang 5	16.5
Kooragang 6	16.5
Kooragang Ship Receival KSR	8.0
Throsby 1	9.5
Carrington wharf	To be sounded as and when required
Tug berth 4	6.5
Elgo wharf	To be sounded as and when required
<i>Channels</i>	
Entrance Approach	17.4
Entrance Channel (18.0m)	16.8
Entrance Channel (17.4m)	17.1
Entrance Channel (16.8m)	16.5
Entrance Channel (16.2m)	16.1
Entrance Channel to Horseshoe	15.1
Horseshoe	15.0
Steelworks Channel to Swinging Basin	15.0
Swinging Basin	15.0
Swinging Basin to BHP	10.6
Basin Cutting	12.8
Basin Area to Eastern & Western Basin Berths	12.4
Basin Area to 1 Throsby	10.0
Stockton Crossing	3.6

* Indicates revised entry.

Chart temporarily affected - Aus 207 - Aus 208 - AU5XX208**499(T)/2009 AUSTRALIA - QUEENSLAND - Moreton Bay - Waterloo Bay - Dredging operations completed***Former Notice - 86(T)/2009 is cancelled*

Maritime Safety Queensland (AA400653)

Cancel this notice on receipt.

Chart formerly affected - Aus 236

500(T)/2009 AUSTRALIA - QUEENSLAND - Brisbane River - Old Bar Cutting - Light beacon destroyed
 Maritime Safety Queensland Notice 240(T)/2009 (AA400203)

The light beacon, *Fl.R.2-5s* (27° 19'.76 S 153° 10'.26 E), has been destroyed; a port lateral light buoy, *Q.R*, exists in situ.

Chart temporarily affected - Aus 236 - Aus 237 - AU5237X8

501(T)/2009 AUSTRALIA - QUEENSLAND - Bribie Island - Pumicestone Channel - Harbour works

Date - Until 30 June 2009

Maritime Safety Queensland Notice 236(T)/2009 (AA400102)

The barge *Salvage 1* is conducting remediation works on Bribie Island bridge (27° 04'.21 S 153° 08'.73 E).

The barge will display appropriate lights and shapes.

Mariners are advised to navigate with caution in the area.

Chart temporarily affected - Aus 235 - Aus 236

502(T)/2009 AUSTRALIA - QUEENSLAND - Pumicestone Channel - Harbour works

Date - Until 3 July 2009

Maritime Safety Queensland Notice 217(T)/2009 (AA399741)

Works associated with the construction of a new boat ramp, in position 26° 53'.75 S 153° 05'.10 E, are in progress.

Mariners are advised to navigate with caution in the area.

Chart temporarily affected - Aus 235

503(T)/2009 AUSTRALIA - QUEENSLAND - Point Cartwright - Obstruction southeastwards

Maritime Safety Queensland Notice 212(T)/2009 (AA399779)

An underwater obstruction exists in position 26° 41'.8 S 153° 13'.8 E (WGS84 datum).

Mariners are advised to navigate with caution in the area.

Chart temporarily affected - Aus 235 - Aus 365

504(T)/2009 AUSTRALIA - QUEENSLAND - Mooloolaba - Shoaling

Former Notice - 324(T)/2009 is cancelled

Maritime Safety Queensland Notice 226(T)/2009 (AA399728)

Shoaling, with a least depth of 2.3 metres LAT, exists within the Mooloolah River channel. Lesser depths of 2.1 metres LAT exist adjacent to the eastern breakwater No 2 beacon (26° 40'.75 S 153° 07'.96 E (WGS84 datum)). A shoal patch with a least depth of 2.0 metres LAT exists in the vicinity of position 26° 40'.81 S 153° 07'.86 E.

Mariners are advised to navigate with caution in the area.

Chart temporarily affected - Aus 235

505(T)/2009 AUSTRALIA - QUEENSLAND - Gladstone - Dredging operations*Date* - Until 4 May 2009

Maritime Safety Queensland Notice 223(T)/2009 (AA399739)

The dredge *Brisbane* is conducting dredging operations in Gladstone harbour.

The dredge will monitor VHF Ch 13 and 16.

Mariners are advised to navigate with caution in the area.

Chart temporarily affected - Aus 244 - Aus 245 - Aus 246 - AU5244X5**506(T)/2009 AUSTRALIA - QUEENSLAND - Gladstone - Hamilton Point to Tail Point - Scientific instruments***Date* - Until 1 November 2009

Maritime Safety Queensland Notice 246(T)/2009 (AA401380)

Scientific instruments marked by special conical light buoys, Q, exist in positions:

23° 48'.23 S 151° 12'.56 E

23° 47'.83 S 151° 17'.32 E

23° 46'.49 S 151° 11'.19 E

23° 45'.27 S 151° 09'.82 E

Chart temporarily affected - Aus 244 - Aus 245 - AU5244X5**507(T)/2009 AUSTRALIA - QUEENSLAND - Gladstone - Dredging operations***Date* - Until 30 June 2009

Maritime Safety Queensland Notice 228(T)/2009 (AA399733)

The dredge *Mabuiag* is conducting dredging operations in the marina (23° 49'.93 S 151° 14'.68 E).

The dredge will monitor VHF Ch 13 and Ch 16. Marina personnel can be contacted on VHF Ch 82.

A submerged pipeline exists in the area, marked by port and starboard light buoys which indicate where vessels can safely cross.

Mariners are advised to navigate with caution in the area.

Chart temporarily affected - Aus 244 - Aus 245 - AU5244X5**508(T)/2009 AUSTRALIA - QUEENSLAND - Keppel Bay - Mud Island to Centre Bank - Scientific instruments***Date* - Until 1 November 2009

Maritime Safety Queensland Notice 245(T)/2009 (AA401379)

Scientific instruments marked by special conical light buoys, Q, exist in positions:

23° 32'.06 S 150° 51'.00 E

23° 30'.71 S 150° 56'.33 E

23° 26'.11 S 150° 57'.36 E

Chart temporarily affected - Aus 247 - Aus 819 - AU424150

509(T)/2009 AUSTRALIA - QUEENSLAND - Shoalwater Bay - Live firing*Date - Until 11 May 2009*

Maritime Safety Queensland Notice 199(T)/2009 (AA397903)

Live firing activities will be conducted in the Shoalwater Bay training area during the period 9 May to 10 May 2009.

A marine danger area extends to all waters south of the line defined by the following positions (WGS84 datum):

Sabina Point	Point 2-3	22° 23'.84 S	150° 18'.02 E
Old Kiever	Point 3-5	22° 27'.02 S	150° 34'.98 E

All waters, creeks, beaches and other areas within the declared marine danger area are not available for access.

Mariners are advised to keep clear of this area throughout the above times.

Chart temporarily affected - Aus 260 - Aus 261 - Aus 367 - Aus 822 – AX 60260 - AU423150 - AU5261P2

510(T)/2009 AUSTRALIA - QUEENSLAND - Hay Point - Diving operations*Date - Until 30 June 2009*

Maritime Safety Queensland Notice 232(T)/2009 (AA399730)

Diving operations are in progress in the vicinity of the Dalrymple Bay coal terminal berths (21° 14'.96 S 149° 18'.31 E).

MV *Shadows* will be in attendance and will monitor VHF Ch 16.

Mariners are advised to navigate with caution in the area.

Chart temporarily affected - Aus 249 - Aus 250 - AU5250P2

511(T)/2009 AUSTRALIA - QUEENSLAND - Cairns - Depth information*Former Notice - 1313(T)/2008 is cancelled*

Maritime Safety Queensland Notice 218(T)/2009 (AA399740)

Available depths as of 9 April 2009:

	<i>Metres</i>	<i>Remarks</i>
Entrance Channel	8.3	
Crystal Swing Basin at:		
360 metre diameter	6.8	
380 metre diameter	6.4	
Swing Basin at:		
310 metre diameter	8.7	
320 metre diameter	7.8	
* Marlin Marina	3.3	
Berths:		
No 1	8.4	
No 2	8.5	
No 3	8.4	
No 4	8.4	
No 5	8.2	
No 6	8.1	between 500 metres and 550 metres
No 6	7.7	between 550 metres and 600 metres
No 7	9.9	
No 8	10.0	
No 10	9.3	
No 12	10.5	
* Smiths Creek 1	4.7	

* Indicates revised entry.

Chart temporarily affected - Aus 262 - Aus 263 - Aus 264 - Aus 830 – AX 63262 - AU417145 - AU5262X4

512(T)/2009 AUSTRALIA - QUEENSLAND - Karumba - Depth information*Former Notice - 173(T)/2009 is cancelled*

Maritime Safety Queensland Notice 505(T)/2008, 238(T)/2009 (AA354877, AA400753)

Available depths as at 20 April 2009:

<i>Berth</i>	<i>Metres</i>
* Entrance Channel	2.5
Mobil/Trinity Wharf	6.3
Raptis Wharf	5.3
Ruby Marine Wharf	5.3
Gulf Freight Services Wharf	6.2
Karumba Cold Stores Wharf	6.2
Seaswift/Shell Wharf	6.2
Karumba Livestock Loading Wharf	5.4
Gulf Freight Services Ramp/Wharf	4.6
Pasminco Export Wharf	4.2

* Indicates revised entry.

Chart temporarily affected - Aus 6**513(T)/2009 AUSTRALIA - QUEENSLAND - Karumba - Light buoy re-established***Former Notice - 221(T)/2009 is cancelled*

Maritime Safety Queensland 231/2009 (AA399706)

Cancel this notice on receipt.

Chart formerly affected - Aus 6**514(T)/2009 AUSTRALIA - NORTHERN TERRITORY - Darwin - Light buoy re-established***Former Notice - 759(T)/2008 is cancelled*

Darwin Port Corporation (AA400216)

Cancel this notice on receipt.

Chart formerly affected - Aus 26 – AX 72026

515(T)/2009 AUSTRALIA - WESTERN AUSTRALIA - Rankin Bank to Dampier - Production wells; platform; pipeline to be established

Former Notice - 224(T)/2009 is cancelled

Date - Until 31 October 2009

Dampier Port Authority (AA401074), Woodside Energy Ltd (AA384702, AA384703, AA384705 - AA384707, AA384803, AA384804, AA385860)

Pluto platform will be established in position 19° 59'.78 S 115° 22'.09 E (WGS84 datum).

A production well will be established in position 19° 54'.85 S 115° 07'.92 E.

A pipeline will be laid by PV *Audacia* and pipeline barge *Tog Mor* between:

19° 54'.85 S 115° 07'.92 E
 19° 58'.14 S 115° 11'.16 E
 19° 59'.78 S 115° 22'.09 E
 19° 58'.90 S 115° 25'.77 E
 20° 02'.13 S 115° 28'.32 E
 20° 02'.99 S 115° 31'.90 E
 20° 08'.18 S 115° 54'.94 E
 20° 10'.27 S 115° 59'.67 E
 20° 10'.35 S 116° 04'.83 E
 20° 19'.01 S 116° 39'.89 E
 20° 24'.52 S 116° 45'.86 E
 20° 35'.35 S 116° 44'.55 E
 20° 36'.42 S 116° 45'.38 E

A 0.5M exclusion zone exists on each side of the pipeline from the shore crossing to position 20° 24'.52 S 116° 45'.86 E.

Chart temporarily affected - Aus 57 - Aus 58 - Aus 59 - Aus 327 - Aus 328 - Aus 415 - Aus 416 - Aus 741 - Aus 742 - AX 0415F - AU320115 - AU421115 - AU421116

516(T)/2009 AUSTRALIA - WESTERN AUSTRALIA - Thevenard Island to Ashburton Road - Scientific instruments

Former Notice - 450(T)/2009 is cancelled

Date - Until 30 April 2009

MetOcean Engineers (AA401216)

Scientific instruments exist as follows:

<i>Position</i>	<i>Remarks</i>
21° 21'.86 S 114° 51'.20 E	5 poly floats
21° 22'.08 S 114° 50'.91 E	lit buoy <i>F(5)Y.20s</i>
21° 22'.08 S 114° 51'.00 E	5 poly floats
21° 31'.40 S 114° 54'.90 E	5 poly floats
21° 31'.67 S 115° 07'.07 E	5 poly floats
21° 33'.41 S 115° 00'.92 E	5 poly floats
21° 39'.29 S 115° 00'.68 E	5 poly floats
21° 39'.34 S 115° 00'.80 E	5 poly floats

Chart temporarily affected - Aus 64 - Aus 743 - Aus 744 - AU422114

517(T)/2009 AUSTRALIA - WESTERN AUSTRALIA - Geraldton - Champion Bay - Light buoy re-established

Former Notice - 760(T)/2008 is cancelled

Geraldton Port Authority (AA397386)

Cancel this notice on receipt.

Chart formerly affected - Aus 81 - Aus 751

518(T)/2009 AUSTRALIA - WESTERN AUSTRALIA - Geographe Bay - Scientific instrument*Former Notice - 1260(T)/2006 is cancelled*

Department for Planning and Infrastructure WA (AA400740)

A scientific instrument exists in position 33° 36'.7 S 115° 13'.7 E (WGS84 datum).

Chart temporarily affected - Aus 334 - Aus 335 - Aus 755 - Aus 756 – AX 0334E – AX 0755E - AU434115**519(T)/2009 AUSTRALIA - SOUTH AUSTRALIA - Kangaroo Island - Live firing southeastwards***Date - Until 1 June 2009*

Royal Australian Air Force (AA398671)

Military exercise area R282 will be activated for a live firing from 4 May to 1 June 2009, within a 25M radius of position 36° 45'.0 S 138° 06'.0 E (WGS84 datum).

Chart temporarily affected - Aus 346 - Aus 347**520(T)/2009 AUSTRALIA - SOUTH AUSTRALIA - Murray River - Dredging operations; exclusion zone***Date - Until 31 October 2009*

Department for Transport, Energy and Infrastructure SA Notice 20/2009 (AA399745)

Dredging operations are in progress in the entrance to Murray River.

An exclusion zone, marked by special buoys, exists in position 35° 33'.57 S 138° 52'.67 E. Vessels are not permitted to enter this buoyed zone.

The dredge displays appropriate lights and shapes.

Chart temporarily affected - Aus 347**521(T)/2009 AUSTRALIA - TASMANIA - Grassy Harbour - Lights unlit***Date - Until 30 April 2009*

Marine and Safety Tasmania Notice M57/2009 (AA399786)

Leading lights, *F.G. 11m 2M (occas)* (40° 03'.96 S 144° 03'.03 E) and *F.G. 14m 2M (occas)* (40° 03'.95 S 144° 03'.01 E), are unlit.**Chart temporarily affected - Aus 178 - AU5178P4**

522(T)/2009 AUSTRALIA - TASMANIA - Hobart - Depth information*Former Notice - 459(T)/2009 is cancelled*

Marine and Safety Tasmania Notice M62/2009 (AA400769)

Available depths as at 21 April 2009:

	<i>Metres</i>
Princes 1	7.4
Princes Int	7.6
Princes 2	7.8
Princes 3	8.5
Princes 4	7.5
Elizabeth St South	9.8 (6.0m first 20m inner end)
Macquarie 1	6.8 (4.5m first 20m inner end)
Macquarie 2	9.3
Macquarie 3	10.0
Macquarie 4	13.0
Macquarie 5	12.0
Macquarie 6	11.0
Selfs Point	14.4
Risdon 1	9.2
Risdon 2	10.0

* Indicates new or revised entry.

Chart temporarily affected - Aus 172**523(P)/2009 AUSTRALIA - TASMANIA - Mersey Bluff - Light range to be altered***Date - On or about 8 May 2009*

Australian Maritime Safety Authority ATH 11/2009 (AA399900)

The range of light K3550 (41° 09'.52 S 146° 21'.33 E (WGS84 datum)) will be altered to *15/12M*.**Chart which will be affected - Aus 164 - Aus 422 - Aus 487 - Aus 799 - AU442146****524(P)/2009 AUSTRALIA - TASMANIA - Round Hill Point - Light range to be altered***Date - On or about 5 May 2009*

Australian Maritime Safety Authority ATH 10/2009 (AA399899)

The range of light K3535 (41° 03'.90 S 145° 57'.72 E) will be altered to *16/13M*.**Chart which will be affected - Aus 163 - Aus 422 - Aus 487 - Aus 799 - AU442145****525(P)/2009 AUSTRALIA - TASMANIA - Rocky Cape - Light range to be altered***Date - On or about 10 May 2009*

Australian Maritime Safety Authority ATH 12/2009 (AA399901)

The range of light K3531 (40° 51'.26 S 145° 30'.49 E) will be altered to *16M*.**Chart which will be affected - Aus 422 - Aus 487 - Aus 790 - Aus 799 - AU441145**

II

HYDROGRAPHIC REPORTS

Nil Reports

NAVIGATION WARNINGS

The following radio messages have been received during the period to 24 April 2009. Signal copies of these messages may be destroyed. It is recommended that the reprint of Navigational Warnings should be kept in a file or a book divided into areas. Cancellation should be made on receipt of signals and reprints.

Rigs on location other than those listed in the latest Section III summary are the subject of Radio Navigational Warnings. Rigs in transit will not be the subject of Warnings.

AUSCOAST WARNING

- 089 Special purpose vessel *Markab* conducting drilling operations in position 19° 56'·00 S 115° 23'·00 E. 2.5M clearance requested.
 090 Drill rig *Songa Venus* in position 13° 33'·70 S 123° 25'·20 E. 2.5M clearance requested.
 091 Cancelled.
 092 Drill rig *Atwood Eagle* in position 20° 21'·55 S 114° 39'·26 E. 2.5M clearance requested.
 093 Cancelled.
 094 Cancelled.
 095 Cancelled.
 096 Special purpose vessel *Bos Atlantic* conducting seismic survey towing 6.5M cable in area 32° 20'·00 S to 37° 10'·00 S and 127° 00'·00 E to 135° 30'·00 E. 8.5M clearance requested.
 097 Drill rig *Songa Mercur* in position 21° 30'·15 S 114° 08'·70 E. 2.5M clearance requested.

NAVAREA X WARNINGS

- 008 Special purpose vessel *Pacific Titan* conducting seismic survey towing 3.2M cable in area 08° 00'·00 S to 09° 15'·00 S and 145° 00'·00 E to 146° 30'·00 E. 6M clearance requested.

Navigational warnings in force as at 240001UTC APR 09.**Auscoast**

044 048 060 067 072 076 083 084 085 086 088 089 090 092 096 097

Navarea X

008

Summary of mobile drilling rigs as at 240001UTC APR 09.

<i>Name</i>	<i>Position</i>
Transocean Legend	14° 21'·75 S 121° 39'·55 E
Ocean Shield	14° 29'·68 S 128° 30'·58 E
Songa Venus	13° 33'·70 S 123° 25'·20 E
Sedco 703	13° 37'·00 S 122° 18'·00 E
Stena Clyde	20° 00'·36 S 115° 09'·06 E
EnSCO 7500	19° 52'·00 S 114° 31'·00 E
Atwood Eagle	20° 21'·55 S 114° 39'·26 E
Songa Mercur	21° 30'·15 S 114° 08'·70 E
Ocean Epoch	21° 31'·38 S 114° 06'·59 E
Nan Hai 6	21° 28'·31 S 113° 59'·10 E

NAVAREA XIV WARNINGS

Nil.

Navarea XIV warnings in force as at 240001UTC APR 09.

2008 085
2009 013 014

To accompany Australian Notice to Mariners 483/2009

AUSTRALIAN MARITIME JURISDICTION
(AMJ)

The territorial sea baseline and the outer limit of Australian maritime zones shown on this chart are sourced from the Geoscience Australia product Australian Maritime Boundaries (AMB). For Australian maritime boundary information see Australia Seafarers Handbook AHP 20.

Note for chart Aus 717

To accompany Australian Notice to Mariners 485/2009

AUSTRALIAN MARITIME JURISDICTION
(AMJ)

The territorial sea baseline and the outer limit of Australian maritime zones shown on this chart are sourced from the Geoscience Australia product Australian Maritime Boundaries (AMB). For Australian maritime boundary information see Australia Seafarers Handbook AHP 20.

Note for chart Aus 725

To accompany Australian Notice to Mariners 486/2009

AUSTRALIAN MARITIME JURISDICTION
(AMJ)

The territorial sea baseline and the outer limit of Australian maritime zones shown on this chart are sourced from the Geoscience Australia product Australian Maritime Boundaries (AMB). For Australian maritime boundary information see Australia Seafarers Handbook AHP 20.

Note for chart Aus 400

To accompany Australian Notice to Mariners 491/2009

ENVIRONMENTALLY SENSITIVE SEA
AREA (ESSA)

Areas of this chart are Environmentally Sensitive Sea Areas (ESSA). Areas within this marine protected area have restrictions on access and activities. See Australian Seafarers Handbook AHP 20.

Note for chart Aus 790

To accompany Australian Notice to Mariners 491/2009

AUSTRALIAN MARITIME JURISDICTION
(AMJ)

The territorial sea baseline and the outer limit of Australian maritime zones shown on this chart are sourced from the Geoscience Australia product Australian Maritime Boundaries (AMB). For Australian maritime boundary information see Australia Seafarers Handbook AHP 20.

Note for chart Aus 790

To accompany Australian Notice to Mariners 491/2009

ENVIRONMENTALLY SENSITIVE SEA
AREA (ESSA)

Areas of this chart are Environmentally Sensitive Sea Areas (ESSA). Areas within this marine protected area have restrictions on access and activities. See Australian Seafarers Handbook AHP 20.

Note for chart Aus 791

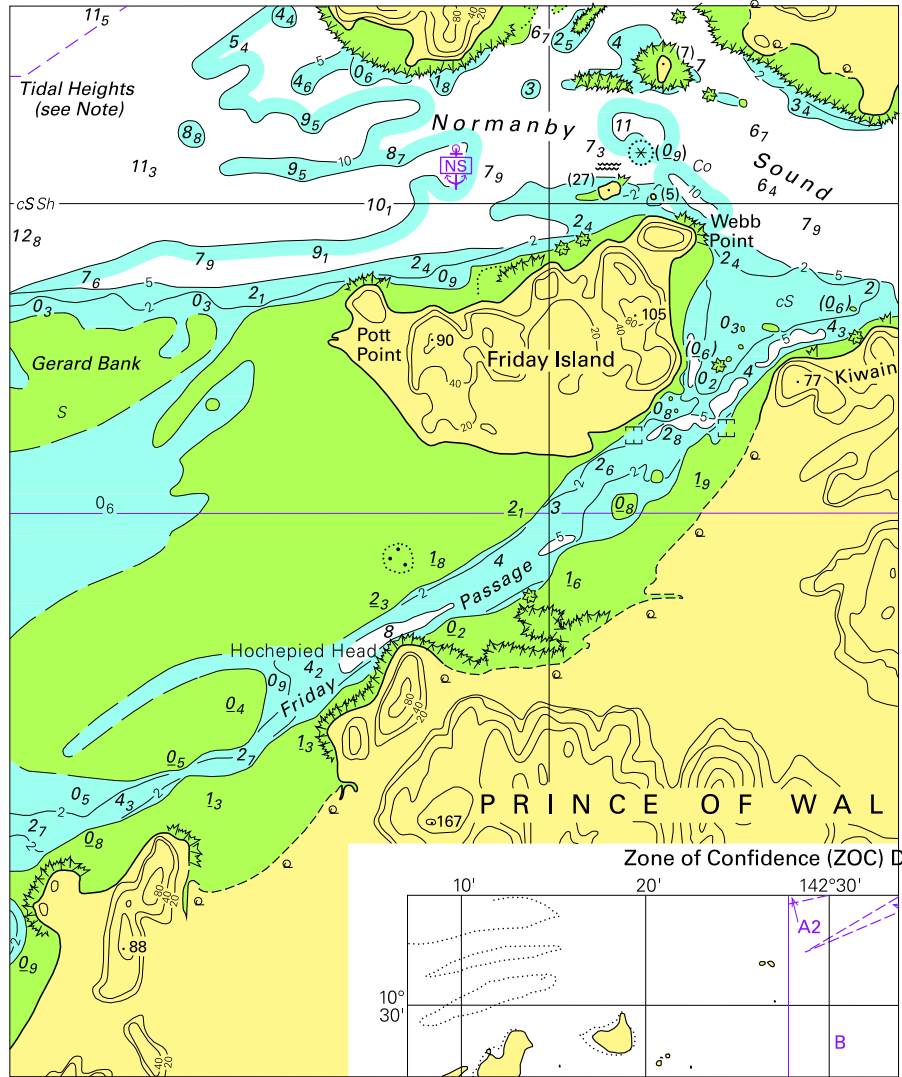
To accompany Australian Notice to Mariners 491/2009

AUSTRALIAN MARITIME JURISDICTION
(AMJ)

The territorial sea baseline and the outer limit of Australian maritime zones shown on this chart are sourced from the Geoscience Australia product Australian Maritime Boundaries (AMB). For Australian maritime boundary information see Australia Seafarers Handbook AHP 20.

Note for chart Aus 791

To accompany Australian Notice to Mariners 481/2009

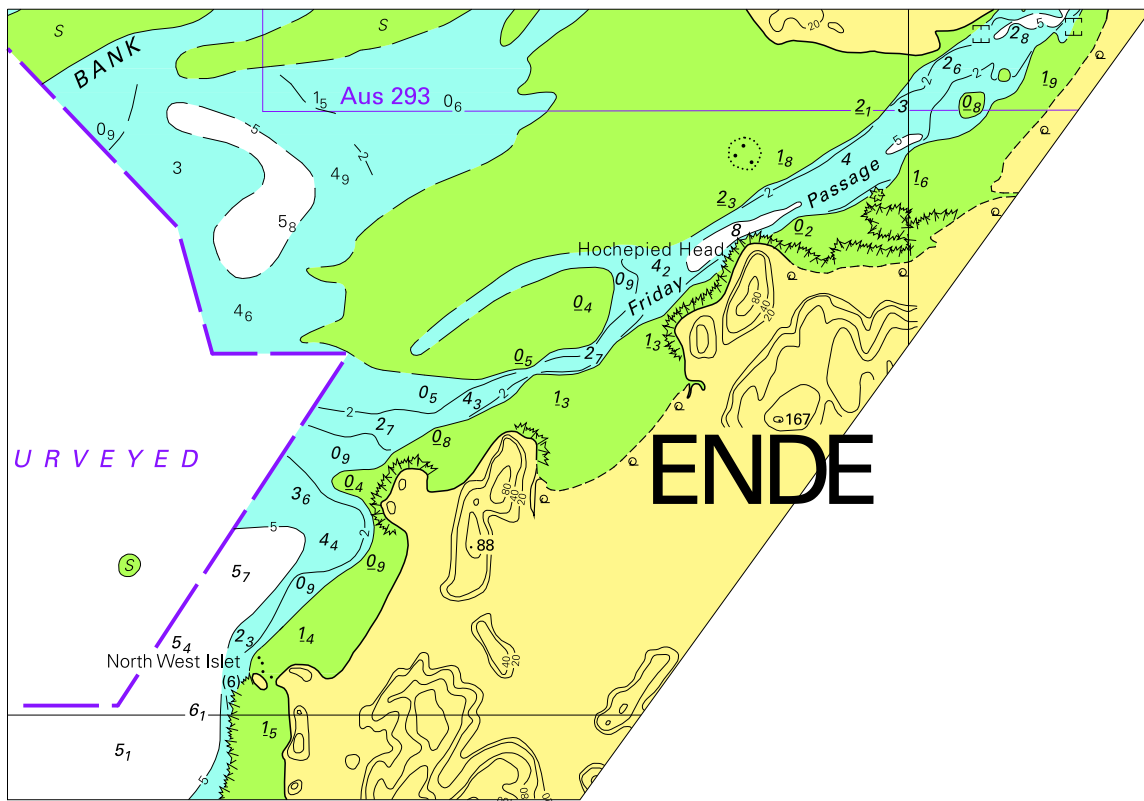


Block for chart Aus 292

© Commonwealth of Australia 2009

(117.5 x 141.7mm)

To accompany Australian Notice to Mariners 481/2009

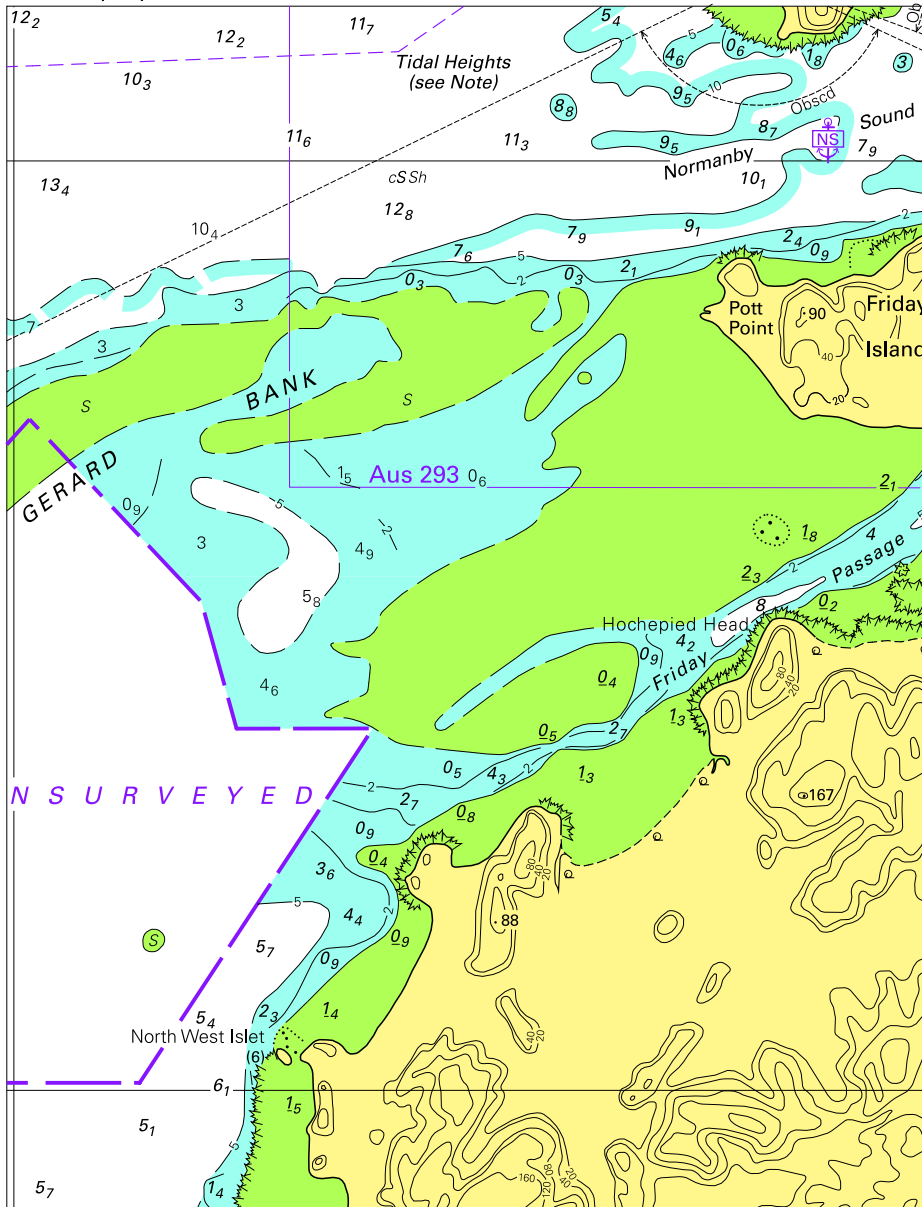


Block for chart Aus 294

© Commonwealth of Australia 2009

(151.3 x 105.4mm)

To accompany Australian Notice to Mariners 481/2009

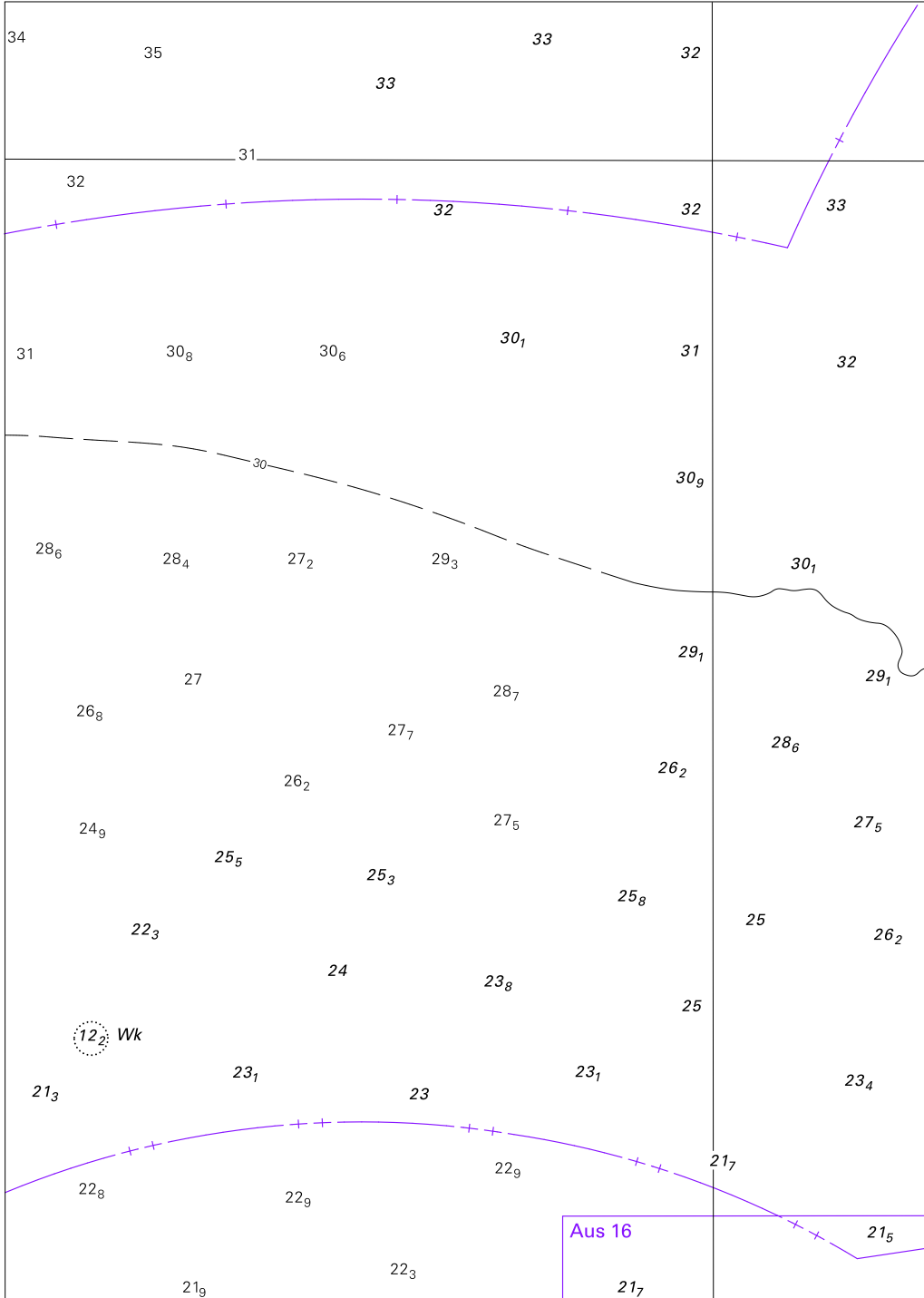


Block for chart Aus 296

© Commonwealth of Australia 2009

(122.3 x 159mm)

To accompany Australian Notice to Mariners 483/2009

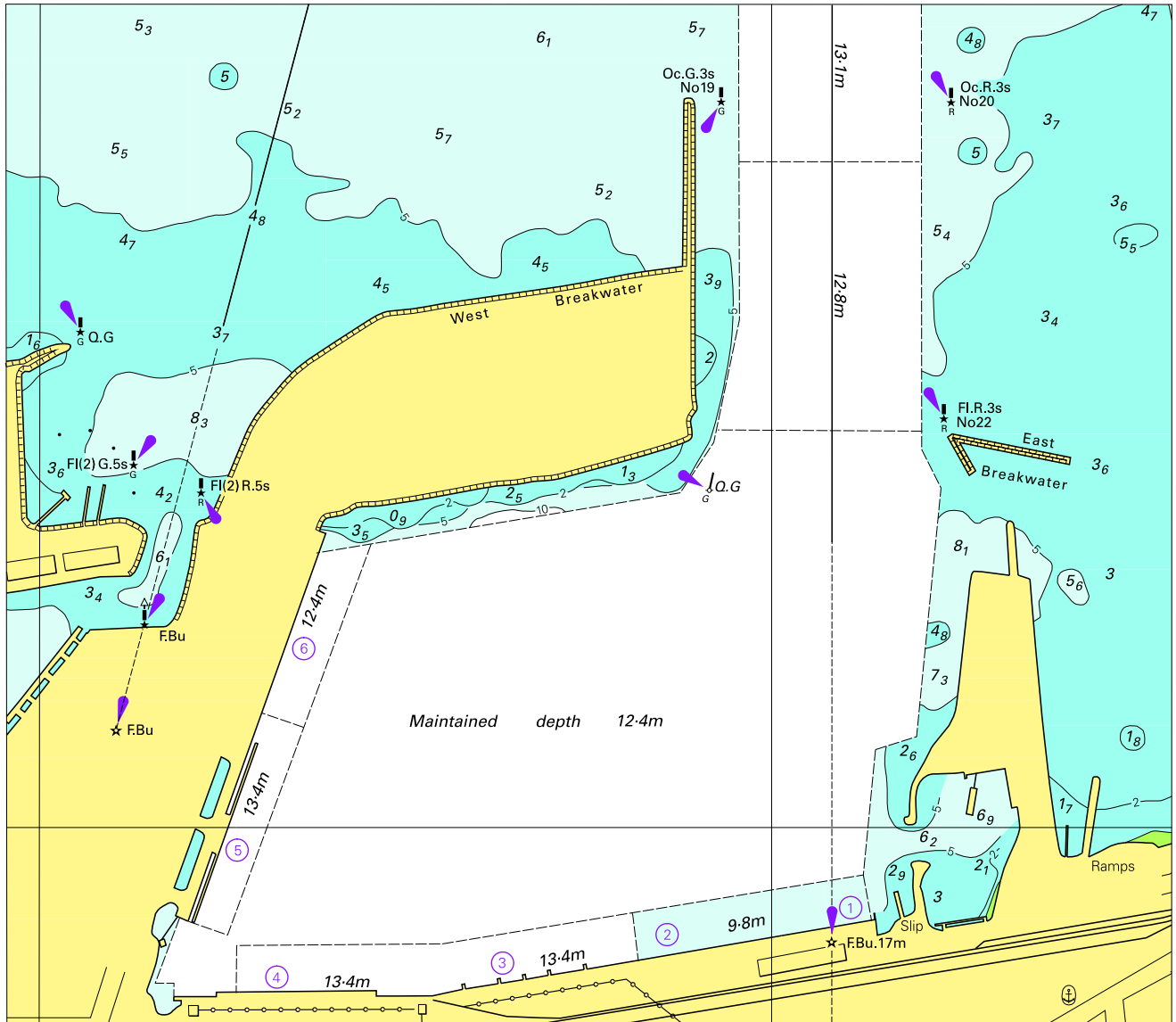


Block for chart Aus 717

© Commonwealth of Australia 2009

(189.6 x 134.9mm)

To accompany Australian Notice to Mariners 487/2009

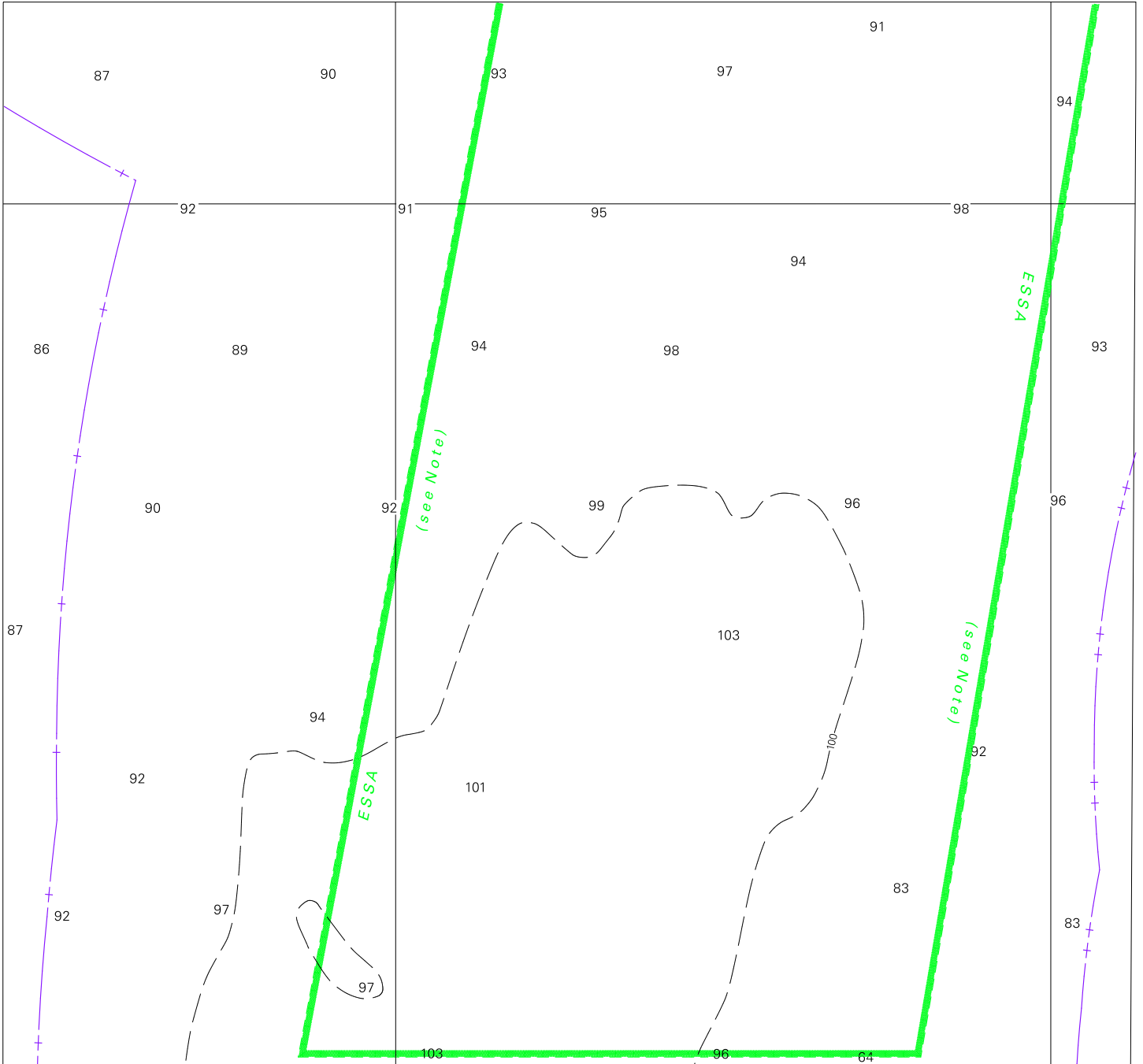


Block for chart Aus 81

© Commonwealth of Australia 2009

(151.1x172.8mm)

To accompany Australian Notice to Mariners 491/2009



Block for chart Aus 791

© Commonwealth of Australia 2009

(178.4 x 190.2mm)