



Australian Notices to Mariners are the authority for correcting Australian Charts and Publications

AUSTRALIAN NOTICES TO MARINERS

Notices 402 - 469

List of Temporary and Preliminary Notices in force Cumulative List – April 2009

Published fortnightly by the Australian Hydrographic Service

Commodore R. NAIRN RAN
Hydrographer of Australia

-
- | | | |
|------------------|-------------|--|
| SECTIONS. | I. | Australian Notices to Mariners, including blocks and notes. |
| | II. | Hydrographic Reports. |
| | III. | Navigational Warnings. |

For Notices affecting Admiralty List of Lights and Fog Signals; List of Radio Signals; and Sailing Directions see [British Notices to Mariners](#).

The substance of these notices should be inserted on the charts affected.

Bearings are referred to the true compass and are reckoned clockwise from North; those relating to lights are given as seen by an observer from seaward. Positions quoted in permanent notices relate to the horizontal datum for the chart(s). When preliminary or temporary notices affect multiple charts, positions will be provided in relation to only one horizontal datum and that datum will be specified. When the multiple charts do not have a common horizontal datum, mariners will be required to adjust the position(s) for those charts not on the specified datum. The range quoted for a light is its nominal range. Depths are with reference to the chart datum of each chart. Heights are above mean high water springs or mean higher high water, as appropriate.

The capital letter (P) or (T) after the number of any notice denotes a preliminary or temporary notice respectively, which are contained separately at the end of the permanent notices. A star () adjacent to the number of a notice indicates that the notice is based on original information.*

Mariners are particularly requested to notify the AUSTRALIAN HYDROGRAPHIC SERVICE, Locked Bag 8801 Wollongong, NSW 2500 (Fax 02-4223 6599, e-mail Hydro.NTM@defence.gov.au or, alternatively by filling in and submitting the [Hydrographic Notes](#) forms located on the web site – www.hydro.gov.au), immediately on the discovery of new dangers or suspected dangers to navigation. For changes or defects in aids to navigation notify AusSAR (Fax 02-6230 6868 or email rccaus@amsa.gov.au).

Copies of Australian notices are available free of charge from the Australian Hydrographic Service (AHS) website (www.hydro.gov.au) and through the eNotices (email) service (www.hydro.gov.au/enotices/enotices.htm).

Individual Notices may be copied for the purpose of inserting Notice substance on official charts and publications. Paper copies may be printed by chart agents and distributed to customers on a cost recovery basis. Participating chart agents are listed on the AHS website as providing a 'Paper Notices to Mariners' service (www.hydro.gov.au/prodserv/distributors/distributors.htm). Copies of the notices may not be sold for profit without prior written agreement.

IMPORTANT NOTICE

This edition of Notices to Mariners includes all significant information affecting AHS products which the AHS has become aware of since the last edition. All reasonable efforts have been made to ensure the accuracy and completeness of the information, including third party information, on which these updates are based. The AHS regards third parties from which it receives information as reliable, however the AHS cannot verify all such information and errors may therefore exist. The AHS does not accept liability for errors in third party information.

© Commonwealth of Australia 2009

This work is copyright. Apart from any use permitted under the Copyright Act 1968, no part may be reproduced by any process, adapted, communicated or commercially exploited without prior written permission from The Commonwealth represented by the Australian Hydrographic Service.

NUMERICAL INDEX OF NOTICES TO MARINERS

Edition No 7

Notices	Aus Chart, INT Chart, ENC Cell, AHP
402.....	Aus 220, 240, 241, 363, 371, 372, 373, 374, 620, 672, 812, AU311131, 311132, 312120, 312121, 312122, 333130, 333131, 335120, 337138, 339138, 339139, 432132, 439140, 439141, 5XX140, 5177P1
403.....	Amendment to Australian National Tide Tables 2009
404.....	Aus 198, 199
405.....	Aus 365
406.....	Aus 830
407.....	Aus 617, 4620, 4621, INT 620, 621, AX 4620F, 4621F
408.....	Aus 280, 833, 834
409.....	Aus 376, 839
410.....	Aus 392, 543
411.....	Aus 293
412.....	Aus 301
413.....	Aus 722, AX 72722
414.....	Aus 722, 724, AX 72722
415.....	Aus 321, AX 0321F
416.....	Aus 4722, INT 722, AX 4722F
417.....	Aus 4708, INT 708, AX 4708F
418.....	Aus 732, 733
419.....	Aus 732, 733
420.....	Aus 57, 58
421.....	Aus 328, 415, 416, AX 0415F
422.....	Aus 81, 332, 333, 416, 417, 751
423.....	Aus 137
424.....	Aus 766, 767
425.....	Aus 144, 158
426.....	Aus 143, 155
427.....	Cumulative List of Australia Notices to Mariners – April 2009
428(T)	Aus 207, 208, AU5XX208
429(T)	Aus 236, 364, 814
430(T)	Aus 235, 364, 365, 814
431(T)	Aus 235
432(T)	Aus 235, 236
433(T)	Aus 235, 236
434(T)	Aus 236, AU5237X8
435(T)	Aus 236, AU5237X8
436(T)	Aus 237, AU5237X8
437(T)	Aus 238, AU5237X8
438(T)	Aus 236
439(T)	Aus 235, 236
440(T)	Aus 244, 245, AU5244X5
441(T)	Aus 260, 367, 822, AX 60260, AU423150
442(T)	Aus 251, 823, 824, AU421149
443(T)	Aus 256, 257, AU5XX257
444(T)	Aus 256, 257, AU5XX257
445(T)	Aus 258, 259, 828, AU419146, 5258P2, 5259P1
446(T)	Aus 830, AU417145
447(T)	Aus 262, AU5262X4
448(T)	Aus 293, 299, AU5XX299
449(T)	Aus 324
450(T)	Aus 64, 743, 744, AU422114
451(T)	Aus 81, 751
452(T)	Aus 112, 113, AU5XX113
453(T)	Aus 114, 117, AX 70117, AU5111X4
454(T)	Aus 109, AU5XX109
455(T)	Aus 136, 444, 778
456(T)	Aus 130, 138, 780, 781, AU435138, 5137X8
457(T)	Aus 130, 137
458(T)	Aus 125, 781
459(T)	Aus 172
460(T)	Aus 175
461(T)	Aus 164, 799, AU442146, 5164P2
462(T)	Aus 164, AU5164P2
463(T)	Aus 143, 144, 158, 788, AU439144
464(T)	Aus 143, 144, 154, 155, 158, AU438144, 439144, 5XX154
465(T)	Aus 153, 157, AU5XX153
466(T)	Aus 153, 157, AU5XX153
467(T)	Aus 143, 155, AU438144, 5155P4
468(T)	Aus 357A, 422, 423
469(T)	Temporary and Preliminary notices in force

NUMERICAL INDEX OF CHARTS AFFECTED

Edition No 7

Aus Chart	Notices	Aus Chart	Notices
Aus 57.....	420	Aus 364	429(T), 430(T)
Aus 58.....	420	Aus 365	405, 430(T)
Aus 64.....	450(T)	Aus 367	441(T)
Aus 81.....	422, 451(T)	Aus 371	402
Aus 109.....	454(T)	Aus 372	402
Aus 112.....	452(T)	Aus 373	402
Aus 113.....	452(T)	Aus 374	402
Aus 114.....	453(T)	Aus 376	409
Aus 117.....	453(T)	Aus 392	410
Aus 125.....	458(T)	Aus 415	421
Aus 130.....	456(T), 457(T)	Aus 416	421, 422
Aus 136.....	455(T)	Aus 417	422
Aus 137.....	423, 457(T)	Aus 422	468(T)
Aus 138.....	456(T)	Aus 423	468(T)
Aus 143.....	426, 463(T), 464(T), 467(T)	Aus 444	455(T)
Aus 144.....	425, 463(T), 464(T)	Aus 543	410
Aus 153.....	465(T), 466(T)	Aus 617	407
Aus 154.....	464(T)	Aus 620	402
Aus 155.....	426, 464(T), 467(T)	Aus 672	402
Aus 157.....	465(T), 466(T)	Aus 722	413, 414
Aus 158.....	425, 463(T), 464(T)	Aus 724	414
Aus 164.....	461(T), 462(T)	Aus 732	418, 419
Aus 172.....	459(T)	Aus 733	418, 419
Aus 175.....	460(T)	Aus 743	450(T)
Aus 198.....	404	Aus 744	450(T)
Aus 199.....	404	Aus 751	422, 451(T)
Aus 207.....	428(T)	Aus 766	424
Aus 208.....	428(T)	Aus 767	424
Aus 220.....	402	Aus 778	455(T)
Aus 235.....	430(T), 431(T), 432(T), 433(T), 439(T)	Aus 780	456(T)
Aus 236.....	429(T), 432(T), 433(T), 434(T), 435(T), 438(T), 439(T)	Aus 781	456(T), 458(T)
Aus 237.....	436(T)	Aus 788	463(T)
Aus 238.....	437(T)	Aus 799	461(T)
Aus 240.....	402	Aus 812	402
Aus 241.....	402	Aus 814	429(T), 430(T)
Aus 244.....	440(T)	Aus 822	441(T)
Aus 245.....	440(T)	Aus 823	442(T)
Aus 251.....	442(T)	Aus 824	442(T)
Aus 256.....	443(T), 444(T)	Aus 828	445(T)
Aus 257.....	443(T), 444(T)	Aus 830	406, 446(T)
Aus 258.....	445(T)	Aus 833	408
Aus 259.....	445(T)	Aus 834	408
Aus 260.....	441(T)	Aus 839	409
Aus 262.....	447(T)	Aus 4620	407
Aus 280.....	408	Aus 4621	407
Aus 293.....	411, 448(T)	Aus 4708	417
Aus 299.....	448(T)	Aus 4722	416
Aus 301.....	412	AX 0321F.....	415
Aus 321.....	415	AX 0415F.....	421
Aus 324.....	449(T)	AX 4620F.....	407
Aus 328.....	421	AX 4621F.....	407
Aus 332.....	422	AX 4708F.....	417
Aus 333.....	422	AX 4722F.....	416
Aus 357A	468(T)	AX 60260.....	441(T)
Aus 363.....	402	AX 70117.....	453(T)
		AX 72722.....	413, 414

INT Chart	Notices
INT 620	407
INT 621	407
INT 708	417
INT 722	416
ENC Cell	Notices
AU311131	402
AU311132	402
AU312120	402
AU312121	402
AU312122	402
AU333130	402
AU333131	402
AU335120	402
AU337138	402
AU339138	402
AU339139	402
AU417145	446(T)
AU419146	445(T)
AU421149	442(T)
AU422114	450(T)
AU423150	441(T)
AU432132	402
AU435138	456(T)
AU438144	464(T), 467(T)
AU439140	402
AU439141	402
AU439144	463(T), 464(T)
AU442146	461(T)
AU5111X4	453(T)
AU5137X8	456(T)
AU5XX140	402
AU5155P4	467(T)
AU5164P2	461(T), 462(T)
AU5177P1	402
AU5237X8	434(T), 435(T), 436(T), 437(T)
AU5244X5	440(T)
AU5258P2	445(T)
AU5259P1	445(T)
AU5262X4	447(T)
AU5XX109	454(T)
AU5XX113	452(T)
AU5XX153	465(T), 466(T)
AU5XX154	464(T)
AU5XX208	428(T)
AU5XX257	443(T), 444(T)
AU5XX299	448(T)

402 AUSTRALIA - Product

Australian Hydrographic Service (AA397219, AA386065)

New Chart

<i>Chart</i>	<i>Published</i>	<i>Title and description of amendments</i>	<i>Scale</i>	<i>Index Chart</i>	<i>Price</i>
Aus 672	27/2/2009	Papua New Guinea - New Britain - North Coast - Tavanatangir Harbour 4° 45' 30" S - 4° 49' 46" S 151° 38' 16" E - 151° 41' 42" E <i>New metric chart referred to WGS84 datum and LAT, providing improved coverage of Tavanatangir Harbour.</i>	1:12 500	Aus 5000	\$35.00

New Electronic Navigation Chart (Seafarer ENC)

<i>Cell Name</i>	<i>Released</i>	<i>Title</i>
AU311131	April 2009	Arafura Sea - Cell 11
AU311132	April 2009	Arafura Sea - Northern Approaches to Cobourg Peninsula
AU312120	April 2009	Indian Ocean - Cell 34
AU312121	April 2009	Indian Ocean - Cell 33
AU312122	April 2009	Indian Ocean - Cell 32
AU333130	April 2009	South Australia - Great Australian Bight - Cell 2
AU333131	April 2009	South Australia - Great Australian Bight - Cell 8
AU335120	April 2009	Western Australia - Investigator Island
AU337138	April 2009	South Australia - Southern Ocean - Cell 9
AU339138	April 2009	South Australia - Southern Ocean - Cell 11
AU339139	April 2009	South Australia - Southern Ocean - Cell 12
AU432132	April 2009	South Australia - Fowlers Bay
AU439140	April 2009	South Australia - Port MacDonnell
AU439141	April 2009	South Australia - Discovery Bay to Portland Bay
AU5XX140	April 2009	Victoria - Portland
AU5177P1	April 2009	Tasmania - Strahan

New Chart to be published shortly

<i>Chart</i>	<i>Title</i>	<i>Scale</i>	<i>Expected Publication Date</i>	<i>Expected Stock Availability</i>
Aus 220	Australia - East Coast - Plans in New South Wales North Coast Plans: Tweed River Entrance Trial Bay Evans Head Richmond River Entrance Coffs Harbour Wooli Wooli River Entrance Brunswick River Entrance	1:7 500 1:12 500 1:5 000 1:12 500 1:10 000 1:12 500 1:12 500	10 April 2009	18 May 2009
Aus 240	Australia - East Coast - Queensland - Great Sandy Strait (Southern Sheet)	1:50 000	10 April 2009	18 May 2009
Aus 241	Australia - East Coast - Queensland - Great Sandy Strait (Northern Sheet)	1:50 000	10 April 2009	18 May 2009
Aus 812	Australia - East Coast - New South Wales - Nambucca Heads to Clarence River	1:150 000	10 April 2009	18 May 2009

Chart permanently withdrawn without replacement

<i>Chart</i>	<i>Remarks</i>
Aus 371	See Aus 824, 825, 826, 827, 828, 829,
Aus 372	830, 831, 832, 833, 834 for charting
Aus 373	coverage of waters covered by Aus 371 to
Aus 374	374.
Aus 620	

Note: advice that charts were to be withdrawn was issued in error. See updated accompanying block for index chart Aus 5000.

402 AUSTRALIA – Product (continued)**Chart to be permanently withdrawn without replacement**

Chart *On publication of new chart*
 Aus 363 Aus 812

For further details refer to the AHS website at www.hydro.gov.au for new edition and new chart stock arrival information.

When placing orders with a chart agent, mariners should advise whether their order pertains to the current edition or the new edition.

403 AUSTRALIA - Product - Amendment to Australian National Tide Tables 2009

Australian Hydrographic Service (AA397379, AA397840)

Page xxxi

Amend Geelong To Chart Datum to AUS 157 NC 27 MAR 2009 0.0

Page xxxviii

Amend Yamba To Chart Datum to AUS 222 NC 27 MAR 2009 0.0

Amend Yampi Sound (Koolan Island) To Chart Datum to AUS 40 NC 30 JAN 2009 0.0

Page 360

Amend N.W SOLITARY I. To Chart Datum to 0.0

Page 384

Amend SHARK BAY (INR BCN) To Chart Datum to 0.0

404* AUSTRALIA - NEW SOUTH WALES - Port Botany - Brotherson Dock - Lights

Sydney Ports Corporation (AA395636, AA395637)

Aus 198 [236/2009]

Delete light 33° 58'.16 S 151° 12'.46 E

Aus 199 [236/2009]

Delete light and sectors 33° 58'.16 S 151° 12'.46 E
 light 33° 58'.19 S 151° 12'.47 E

405* AUSTRALIA - QUEENSLAND - Double Island Point - Wolf Rock - Drying height

Maritime Safety Queensland (AA397531)

Aus 365 [572/2008]

Insert drying height, 8ft 25° 54'.7 S 153° 14'.2 E

406* AUSTRALIA - QUEENSLAND - Moore Reef - Depth

LADS Flight (AA396409)

Aus 830 [142/2009]

Substitute depth, 10₅m, for depth 11₃m 16° 51'.8 S 146° 10'.0 E

407* AUSTRALIA - QUEENSLAND - Willis Islets - South Islet - Light; legend

Former Notice - 663(T)/2006 is cancelled
Bureau of Meteorology (AA396986 - AA396994)

Aus 617 (plan, Willis Islets) [954/2008]

Delete	light	16° 17'.3 S	149° 57'.9 E
	legend, MASTS	16° 17'.3 S	149° 58'.8 E

Aus 4620 (INT 620) [358/2009]

Delete	light	16° 17'.3 S	149° 57'.9 E
--------	-------	-------------	--------------

Aus 4621 (INT 621) [376/2009]

Delete	light	16° 17'.3 S	149° 57'.9 E
--------	-------	-------------	--------------

AX 4620F [NC 26/9/2008]

Delete	light	16° 17'.3 S	149° 57'.9 E
--------	-------	-------------	--------------

AX 4621F [376/2009]

Delete	light	16° 17'.3 S	149° 57'.9 E
--------	-------	-------------	--------------

408* AUSTRALIA - QUEENSLAND - Hedge Reef to Magpie Reef - Depths; rock

HMAS *Mermaid* and *Paluma* (DHDB 525264)

Aus 280 (plan, Magpie Reef to Eden Reef) [843/2006]

Insert	accompanying block A	13° 55'.0 S	143° 55'.0 E
	accompanying block B	13° 52'.0 S	143° 48'.5 E

Aus 833 [1271/2008]

Delete	rock and semi enclosing danger circle	13° 53'.0 S	143° 53'.8 E
--------	---------------------------------------	-------------	--------------

Aus 834 [243/2009]

Delete	rock and semi enclosing danger circle	13° 53'.0 S	143° 53'.8 E
--------	---------------------------------------	-------------	--------------

409* AUSTRALIA - QUEENSLAND - Meggi-Maituine Reef - Depths; danger line; rocks; unsurveyed boundary

HMAS *Shepparton* and *Benalla* (DHDB 622984)

Aus 376 [363/2009]

Insert	depth, 19 ₄ m, enclosed by contour	10° 19'.34 S	143° 04'.52 E
	depth, 27 ₆ m	10° 16'.69 S	143° 08'.89 E
Delete	depth, 25 ₅ m	10° 19'.0 S	143° 04'.7 E
	depth, 18 ₃ m, and enclosing contour	10° 19'.3 S	143° 06'.5 E
	danger line enclosing Meggi-Maituine Reef	10° 17'.8 S	143° 06'.5 E
	underwater rock	10° 17'.4 S	143° 06'.6 E
	underwater rock	10° 18'.3 S	143° 06'.0 E
	underwater rock	10° 18'.4 S	143° 06'.6 E

409* AUSTRALIA - QUEENSLAND - Meggi-Maituine Reef - Depths; danger line; rocks; unsurveyed boundary (continued)

Aus 839 [363/2009]

Insert	depth, 19 ₄ m, enclosed by contour	10° 19'.34 S	143° 04'.52 E
	depth, 24m	10° 19'.52 S	143° 06'.53 E
	depth, 21 ₃ m	10° 18'.37 S	143° 08'.16 E
	depth, 27 ₆ m	10° 16'.69 S	143° 08'.89 E
	unsurveyed boundary, between	10° 14'.77 S	143° 09'.08 E
		10° 19'.78 S	143° 09'.50 E
Delete	depth, 25 ₅ m	10° 19'.0 S	143° 04'.7 E
	depth, 18 ₃ m, and enclosing contour	10° 19'.3 S	143° 06'.5 E
	danger line enclosing Meggi-Maituine Reef	10° 17'.8 S	143° 06'.5 E
	underwater rock	10° 17'.4 S	143° 06'.6 E
	underwater rock	10° 17'.7 S	143° 06'.2 E
	underwater rock	10° 18'.3 S	143° 06'.0 E
	underwater rock	10° 18'.4 S	143° 06'.6 E
	unsurveyed boundary, between	10° 14'.8 S	143° 09'.1 E
		10° 15'.0 S	143° 04'.4 E
		10° 19'.9 S	143° 03'.8 E
		10° 19'.8 S	143° 09'.5 E

410* PAPUA NEW GUINEA - New Hanover - Lukus Island to Dunung Island - Wrecks
D Amon (AA396946)

Aus 392 [690/2008]

Insert	depth, 15 ₅ m, enclosed by contour	2° 21'.63 S	150° 22'.87 E
Delete	depth, 138m	2° 21'.2 S	150° 23'.0 E

Aus 543 [NC 23/11/2007]

Insert	depth, 4 ₅ m, enclosed by danger circle with legend <i>Wk</i>	2° 22'.19 S	150° 07'.90 E
	depth, 15 ₅ m, enclosed by contour	2° 21'.63 S	150° 22'.87 E
Delete	depth, 6 ₁ m	2° 22'.3 S	150° 07'.9 E

411* AUSTRALIA - TORRES STRAIT - Prince of Wales Island - Depths
DGST (DHDB 924349)

Aus 293 [148/2009]

Insert	accompanying block	10° 36'.3 S	142° 10'.5 E
--------	--------------------	-------------	--------------

412* AUSTRALIA - QUEENSLAND - Booby Island to Archer River - ZOC diagram; chart notes; legends
Australian Hydrographic Service (AA318722)

Aus 301 [363/2009]

Substitute	accompanying ZOC diagram for reliability diagram	13° 05'.0 S	142° 12'.0 E
Amend	legend to <i>Unsurveyed</i>	13° 33'.0 S	141° 30'.5 E
Delete	legend, Inadequately Surveyed (see Note)	13° 33'.5 S	141° 12'.0 E
	legend, Inadequately Surveyed (see Note)	11° 55'.0 S	141° 00'.0 E
	legend, Inadequately Surveyed (see Note)	10° 56'.0 S	140° 42'.0 E
	note, INADEQUATELY SURVEYED	12° 38'.0 S	142° 20'.0 E
	note, UNSURVEYED	12° 46'.0 S	142° 20'.0 E

413* AUSTRALIA - NORTHERN TERRITORY - Apsley Strait - Chart limits
Australian Hydrographic Service (AA382687)

Aus 722 [53/2009]

Insert	magenta limits, with legend <i>Aus 23</i> in SW corner, between	11° 57'.7 S	130° 31'.9 E
		11° 57'.7 S	130° 47'.0 E
		11° 40'.0 S	130° 47'.0 E
		11° 40'.0 S	130° 31'.9 E
		11° 57'.7 S	130° 31'.9 E

AX 72722 [53/2009]

Insert	magenta limits, with legend <i>Aus 23</i> in SW corner, between	11° 57'.7 S	130° 31'.9 E
		11° 57'.7 S	130° 47'.0 E
		11° 40'.0 S	130° 47'.0 E
		11° 40'.0 S	130° 31'.9 E
		11° 57'.7 S	130° 31'.9 E

414* AUSTRALIA - NORTHERN TERRITORY - Beagle Gulf - Contiguous zone limit; territorial sea limit; territorial sea baseline; chart note

Geoscience Australia (DHDB 1222411)

Aus 722 [413/2009]

Insert	contiguous zone limit, between	12° 35'.34 S	129° 52'.69 E
		12° 30'.45 S	129° 51'.00 E
	territorial sea limit, between	12° 35'.13 S	130° 05'.56 E
		11° 56'.10 S	129° 52'.24 E
	straight territorial sea baseline with base point, between	12° 37'.90 S	130° 19'.45 E
		11° 49'.55 S	130° 02'.92 E
Substitute	accompanying note for AMJ note	12° 28'.0 S	131° 18'.0 E
Delete	contiguous zone limit, between	12° 35'.3 S	129° 52'.7 E
		12° 29'.2 S	129° 51'.0 E
	territorial sea limit, between	12° 35'.1 S	130° 05'.6 E
		11° 56'.1 S	129° 52'.2 E
	straight territorial sea baseline with base point, between	12° 37'.9 S	130° 20'.0 E
		11° 49'.6 S	130° 03'.0 E

Aus 724 [1278/2008]

Insert	contiguous zone limit, between	12° 35'.34 S	129° 52'.69 E
		12° 31'.95 S	129° 51'.54 E
	territorial sea limit, between	12° 35'.13 S	130° 05'.56 E
		12° 31'.95 S	130° 04'.48 E
	straight territorial sea baseline with base point, between	12° 38'.86 S	130° 19'.79 E
		12° 31'.95 S	130° 17'.43 E
Substitute	accompanying note for AMJ note	13° 40'.5 S	130° 20'.0 E
Delete	contiguous zone limit, between	12° 35'.3 S	129° 52'.7 E
		12° 32'.0 S	129° 52'.0 E
	territorial sea limit, between	12° 35'.1 S	130° 05'.6 E
		12° 32'.0 S	130° 05'.0 E
	straight territorial sea baseline with base point, between	12° 37'.9 S	130° 20'.1 E
		12° 32'.0 S	130° 18'.0 E

414* AUSTRALIA - NORTHERN TERRITORY - Beagle Gulf - Contiguous zone limit; territorial sea limit; territorial sea baseline; chart note (*continued*)

AX 72722 [413/2009]

Insert	contiguous zone limit, between	12° 35'.34 S	129° 52'.69 E
		12° 30'.45 S	129° 51'.00 E
	territorial sea limit, between	12° 35'.13 S	130° 05'.56 E
		11° 56'.10 S	129° 52'.24 E
	straight territorial sea baseline with base point, between	12° 37'.90 S	130° 19'.45 E
		11° 49'.55 S	130° 02'.92 E
Substitute	accompanying note for AMJ note	12° 28'.0 S	131° 18'.0 E
Delete	contiguous zone limit, between	12° 35'.3 S	129° 52'.7 E
		12° 29'.2 S	129° 51'.0 E
	territorial sea limit, between	12° 35'.1 S	130° 05'.6 E
		11° 56'.1 S	129° 52'.2 E
	straight territorial sea baseline with base point, between	12° 37'.9 S	130° 20'.0 E
	11° 49'.6 S	130° 03'.0 E	

415 INDONESIA - West Timor - Pulau Semau - Light

BA Notice 13/1545/2009 (AA395618)

Aus 321 [1281/2008]

Amend light to *Oc(2)30s 127m 27M* 10° 07'.8 S 123° 26'.7 E

AX 0321F [1281/2008]

Amend light to *Oc(2)30s 127m 27M* 10° 07'.8 S 123° 26'.7 E

416 INDONESIA - Pulau Tanajampea - Light

BA Notice 13/1584/2009 (AA395619)

Aus 4722 (INT 722) [59/2009]

Insert light, *Fl.G.11M* 7° 03'.3 S 120° 36'.3 E

AX 4722F [59/2009]

Insert light, *Fl.G.11M* 7° 03'.3 S 120° 36'.3 E

417 INDONESIA - Jawa - Cilacap - Depth westwards

BA Notice 14/1762/2009 (AA396819)

Aus 4708 (INT 708) [59/2009]

Insert depth, *207m*, and extend contour S to enclose 7° 43'.3 S 107° 20'.2 E

Delete depth, *672m* 7° 50'.0 S 107° 35'.0 E

AX 4708F [59/2009]

Insert depth, *207m*, and extend contour S to enclose 7° 43'.3 S 107° 20'.2 E

Delete depth, *672m* 7° 50'.0 S 107° 35'.0 E

418* AUSTRALIA - WESTERN AUSTRALIA - Yampi Sound - Chart limits

Australian Hydrographic Service (AA380763)

Aus 732 [739/2008]

Insert	magenta limits, with legend <i>Aus 40</i> in NW corner, between	16° 11'.6 S	123° 30'.0 E
		16° 11'.6 S	123° 51'.7 E
		15° 58'.4 S	123° 51'.7 E
		15° 58'.4 S	123° 30'.0 E
		16° 11'.6 S	123° 30'.0 E

Delete	magenta limits, with legend <i>Aus 40</i> , centred on	16° 07'.0 S	123° 38'.0 E
--------	--	-------------	--------------

Aus 733 [739/2008]

Insert	magenta limits, with legend <i>Aus 40</i> in NW corner, between	15° 58'.4 S	123° 49'.5 E
		15° 58'.4 S	123° 30'.0 E
		16° 11'.6 S	123° 30'.0 E
		16° 11'.6 S	123° 49'.5 E

Delete	magenta limits, with legend <i>Aus 40</i> , centred on	16° 07'.0 S	123° 38'.0 E
--------	--	-------------	--------------

419* AUSTRALIA - WESTERN AUSTRALIA - Caffarelli Island to North West Twin Island - Territorial sea baseline; chart note

Geoscience Australia (DHDB 1222411)

Aus 732 [418/2009]

Insert	straight territorial sea baseline with base point, between	16° 02'.46 S	123° 16'.23 E
		16° 16'.41 S	123° 03'.60 E

Substitute	accompanying note for AMJ note	15° 44'.0 S	124° 37'.0 E
------------	--------------------------------	-------------	--------------

Delete	straight territorial sea baseline with base point, between	16° 02'.6 S	123° 16'.3 E
		16° 16'.5 S	123° 03'.5 E

Aus 733 [418/2009]

Insert	straight territorial sea baseline with base point, between	16° 02'.46 S	123° 16'.23 E
		16° 16'.41 S	123° 03'.60 E

Substitute	accompanying note for AMJ note	17° 15'.0 S	123° 16'.5 E
------------	--------------------------------	-------------	--------------

Delete	straight territorial sea baseline with base point, between	16° 02'.6 S	123° 16'.3 E
		16° 16'.5 S	123° 03'.5 E

420* AUSTRALIA - WESTERN AUSTRALIA - Dampier - Light beacon; light
Dampier Port Authority (AA394428, AA394472)

Aus 57 [NE 13/2/2009]

Amend	structure colour to G	20° 32'.00 S	116° 42'.23 E
Delete	topmark	20° 32'.00 S	116° 42'.23 E

Aus 58 [NE 13/2/2009]

Insert	dashed line, between	20° 37'.061 S	116° 45'.114 E
		20° 36'.598 S	116° 44'.565 E
	legend, <i>Dir 132.1°</i> , centred on	20° 34'.923 S	116° 42'.635 E
Amend	structure colour to G	20° 32'.00 S	116° 42'.23 E
	light to <i>F.WRG.48m 3M & F.Bu.30m 6M</i>	20° 37'.06 S	116° 45'.11 E
Delete	topmark	20° 32'.00 S	116° 42'.23 E

421* AUSTRALIA - WESTERN AUSTRALIA - Barrow Island - Wells northwestwards
Chevron Australia Pty Ltd (AA397648)

Aus 328 [306/2009]

Insert	danger circle with legend <i>Well</i> , centred on	19° 55'.18 S	114° 25'.64 E
--------	--	--------------	---------------

Aus 415 [59/2009]

Insert	danger circle with legend <i>Well</i> , centred on	19° 55'.1 S	114° 25'.7 E
--------	--	-------------	--------------

Aus 416 [1283/2008]

Insert	danger circle with legend <i>Well</i> , centred on	19° 55'.1 S	114° 25'.7 E
--------	--	-------------	--------------

AX 0415F [59/2009]

Insert	danger circle with legend <i>Well</i> , centred on	19° 55'.1 S	114° 25'.7 E
--------	--	-------------	--------------

422* AUSTRALIA - WESTERN AUSTRALIA - Geraldton - Point Moore - Light

Former Notice - 392(P)/2009 is cancelled
Auscoast Warning 77/2009 (AA396503)

Aus 81 [1284/2008]

Amend	light range to 19M	28° 46'.96 S	114° 34'.76 E
-------	--------------------	--------------	---------------

Aus 332 [963/2008]

Amend	light range to 19M	28° 47'.1 S	114° 34'.7 E
-------	--------------------	-------------	--------------

Aus 333 [963/2008]

Amend	light range to 19M	28° 47'.1 S	114° 34'.7 E
-------	--------------------	-------------	--------------

Aus 416 [421/2009]

Amend	light range to 19M	28° 47'.0 S	114° 34'.8 E
-------	--------------------	-------------	--------------

Aus 417 [377/2008]

Amend	light range to 19M	28° 47'.0 S	114° 34'.8 E
-------	--------------------	-------------	--------------

Aus 751 [1184/2008]

Amend	light range to 19M	28° 47'.1 S	114° 34'.7 E
-------	--------------------	-------------	--------------

423* AUSTRALIA - SOUTH AUSTRALIA - Port Adelaide - Light beacons

Department for Transport, Energy and Infrastructure SA Notice 14/2009 (AA395836, AA395763, AA395765)

Aus 137 [312/2009]

Insert	starboard lateral light beacon, <i>Fl.G.4s</i> , with topmark	34° 50'.517 S	138° 30'.077 E
	port lateral light beacon, <i>Fl.R.3s</i> , with topmark	34° 50'.530 S	138° 30'.115 E
	starboard lateral light beacon, <i>Fl.G.2s</i> , with topmark	34° 50'.770 S	138° 29'.802 E
	port lateral light beacon, <i>Fl.R.3s</i> , with topmark	34° 50'.779 S	138° 29'.825 E

424* AUSTRALIA - TASMANIA - Cape Tourville to Eddystone Point - ESSA limit; chart note

Department of the Environment, Water, Heritage and the Arts (DHDB 1222411)

Aus 766 [1243/2008]

Insert	ESSA limit with legend <i>ESSA (see Note)</i> , between	41° 42'.66 S	148° 55'.77 E
		41° 46'.70 S	148° 25'.75 E
		42° 12'.60 S	148° 25'.75 E
		42° 22'.41 S	148° 55'.77 E

Aus 767 [1243/2008]

Insert	ESSA limit with legend <i>ESSA (see Note)</i> , between	41° 40'.58 S	149° 09'.80 E
		41° 46'.70 S	148° 25'.75 E
		41° 50'.90 S	148° 25'.75 E
	ESSA limit with legend <i>ESSA (see Note)</i> , between	40° 44'.04 S	149° 09'.80 E
		40° 51'.00 S	148° 35'.20 E
		40° 40'.00 S	148° 35'.20 E
	accompanying note	40° 55'.5 S	149° 04'.0 E

425* AUSTRALIA - VICTORIA - Port Phillip - Queenscliff - Shortland Bluff - Light beacon

Victorian Notice 45/2009 (AA397510)

Aus 144 [162/2009]

Substitute	port lateral light beacon, <i>Fl.R.3s</i> , with topmark for beacon	38° 16'.50 S	144° 39'.63 E
------------	---	--------------	---------------

Aus 158 [162/2009]

Substitute	port lateral light beacon, <i>Fl.R.3s</i> , with topmark for beacon	38° 16'.5 S	144° 39'.6 E
------------	---	-------------	--------------

426* AUSTRALIA - VICTORIA - Port Phillip - Port Melbourne Channel - Obstruction

Victorian Notice 41/2009 (AA395821)

Aus 143 [162/2009]

Insert	depth, 13m, enclosed by danger circle with legend <i>Obstn</i>	37° 56'.16 S	144° 55'.65 E
--------	--	--------------	---------------

Delete	depth, 14m	37° 56'.1 S	144° 55'.7 E
--------	------------	-------------	--------------

Aus 155 [162/2009]

Insert	depth, 13m, enclosed by danger circle with legend <i>Obstn</i>	37° 56'.156 S	144° 55'.647 E
--------	--	---------------	----------------

427 AUSTRALIA - Product - Cumulative List of Australian Notices to Mariners - April 2009

Australian Hydrographic Service (AA365630)

The Cumulative List of Australian Notices to Mariners - April 2009 is issued as an accompanying supplement. It lists all permanent notices affecting charts in the Area of Australian Charting Responsibility published in the preceding two years since Edition 7 of 2007 dated 13 April 2007, and includes Edition 7 of 2009 dated 10 April 2009. It will be revised in October 2009.

428(T)/2009 AUSTRALIA - NEW SOUTH WALES - Newcastle - Depth information

Former Notice - 319(T)/2009 is cancelled

Newcastle Port Corporation (AA397731)

Available depths as at 31 March 2009:

<i>Berth</i>	<i>Metres</i>
Western Basin 3	11.6
Western Basin 4	11.6
Eastern Basin 1	11.4
Eastern Basin 2 North of Ch 450	11.6
Eastern Basin 2 South of Ch 450	11.3
Dockyard 2 (Dredge)	3.9
Channel Berth (formerly Dockyard 4)	8.3
Dyke 1	11.8
* Dyke 2	12.8
* Dyke 4	16.5
* Dyke 5	16.2
Dyke 6	6.5
BHP Wharf 6 to Ch 1050	7.9
Kooragang 2	11.6
Kooragang 2 North Dolphin	11.0
Kooragang 2 South Dolphin	10.9
Kooragang 3	13.0
Kooragang 4	16.5
Kooragang 5	16.5
Kooragang 6	16.5
Kooragang Ship Receival KSR	8.0
Throsby 1	9.5
Carrington wharf	To be sounded as and when required
Tug berth 4	6.5
Elgo wharf	To be sounded as and when required
<i>Channels</i>	
Entrance Approach	17.4
Entrance Channel (18.0m)	16.8
Entrance Channel (17.4m)	17.1
Entrance Channel (16.8m)	16.5
Entrance Channel (16.2m)	16.1
Entrance Channel to Horseshoe	15.1
Horseshoe	15.0
Steelworks Channel to Swinging Basin	15.0
Swinging Basin	15.0
Swinging Basin to BHP	10.6
Basin Cutting	12.8
Basin Area to Eastern & Western Basin Berths	12.4
Basin Area to 1 Throsby	10.0
Stockton Crossing	3.6

* Indicates revised entry.

Chart temporarily affected - Aus 207 - Aus 208 - AU5XX208**429(T)/2009 AUSTRALIA - QUEENSLAND - Cape Moreton - Obstruction southeastwards**

Maritime Safety Queensland Notice 170(T)/2009 (AA396927)

An obstruction marked by buoys exists in position 27° 07'.12 S 153° 31'.54 E (WGS84 datum).

Mariners are advised to navigate with caution in the area.

Chart temporarily affected - Aus 236 - Aus 364 - Aus 814

430(T)/2009 AUSTRALIA - QUEENSLAND - Cape Moreton - Obstructions

Australian Maritime Safety Authority (AA397869), Maritime Safety Queensland Notice 202(T)/2009 (AA397906)

Underwater obstructions exist within 0.5M of the following positions (WGS84 datum):

27° 00'.7 S 153° 35'.3 E
 27° 01'.7 S 153° 36'.0 E
 27° 02'.2 S 153° 35'.7 E

Mariners are advised to avoid the area.

Chart temporarily affected - Aus 235 - Aus 364 - Aus 365 - Aus 814**431(T)/2009 AUSTRALIA - QUEENSLAND - Moreton Bay - North West Channel - Shoaling removed**

Former Notice - 81(T)/2009 is cancelled

Maritime Safety Queensland Notice 184(T)/2009 (AA397154)

Cancel this notice on receipt.

Chart formerly affected - Aus 235**432(T)/2009 AUSTRALIA - QUEENSLAND - Moreton Bay - Spitfire Channel - Shoaling removed**

Former Notice - 82(T)/2009 is cancelled

Maritime Safety Queensland Notice 185(T)/2009 (AA397152)

Cancel this notice on receipt.

Chart formerly affected - Aus 235 - Aus 236**433(T)/2009 AUSTRALIA - QUEENSLAND - Moreton Bay - North East Channel - Light buoy off station**

Maritime Safety Queensland Notice 191(T)/2009 (AA397826)

NE8 light buoy (27° 02'.3 S 153° 20'.8 E) is off station.

Chart temporarily affected - Aus 235 - Aus 236**434(T)/2009 AUSTRALIA - QUEENSLAND - Moreton Bay - Manly - Harbour works; dredging operations**

Former Notice - 320(T)/2009 is cancelled

Date - Until 31 October 2009

Maritime Safety Queensland Notice 91(T)/2009, 140(T)/2009, 197(T)/2009 (AA385859, AA390773, AA397830)

Harbour works and dredging operations associated with the marina redevelopment are in progress in Manly Boat Harbour (27° 27'.22 S 153° 11'.40 E).

The dredge *Ken Harvey*, MT *Sealion*, MT *Turtle* and two spoil barges are onsite and will display appropriate lights and signals.

The dredge has deployed six anchors, marked by light buoys, Q.Y.

Lit mooring buoys, Q.Y, exist in positions 27° 26'.74 S 153° 12'.05 E and 27° 26'.70 S 153° 12'.14 E.

The starboard light beacon, *Fl.G.3s* (27° 27'.29 S 153° 11'.50 E), has been withdrawn.

The western internal channel is closed for the duration of the works. Vessels requiring access to and from the harbour must use the eastern internal entrance.

Vessels transiting the channel during daylight hours, Monday to Friday, are to contact the dredge on VHF Ch 13 to request the mooring wires be lowered.

Mariners are advised to navigate with caution in the area.

Chart temporarily affected - Aus 236 - AU5237X8

10 April 2009

435(T)/2009 AUSTRALIA - QUEENSLAND - Moreton Bay - Wynnum - Obstruction
Maritime Safety Queensland Notice 201(T)/2009 (AA398175)

An obstruction exists in position 27° 26'.09 S 153° 10'.59 E.

Mariners are advised to navigate with caution in the area.

Chart temporarily affected - Aus 236 - AU5237X8

436(T)/2009 AUSTRALIA - QUEENSLAND - Brisbane River - Pelican Banks Reach - Light buoy repositioned

Former Notice - 57(T)/2008 is cancelled
Maritime Safety Queensland Notice 205(T)/2009 (AA398290)

A port lateral light buoy, *Q.R*, exists in position 27° 23'.336 153° 09'.371E.

Chart temporarily affected - Aus 237 - AU5237X8

437(T)/2009 AUSTRALIA - QUEENSLAND - Brisbane River - Hamilton Reach - Drilling operations

Date - Until 28 April 2009
Maritime Safety Authority Notice 210(T)/2009 (AA398681)

Drilling operations are in progress between positions 27° 26'.51 S 153° 02'.84 E and 27° 26'.41 S 153° 03'.80 E.

The barge displays appropriate lights and shapes.

Mariners are advised to navigate with caution in the area.

Chart temporarily affected - Aus 238 - AU5237X8

438(T)/2009 AUSTRALIA - QUEENSLAND - Moreton Bay - Cabbage Tree Head - Shoaling removed

Former Notice - 346(T)/2008 is cancelled
Maritime Safety Queensland (AA398664)

Cancel this notice on receipt.

Chart formerly affected - Aus 236

439(T)/2009 AUSTRALIA - QUEENSLAND - Moreton Bay - Pumicestone Channel - Wreck

Maritime Safety Queensland Notice 192(T)/2009 (AA397827)

A wreck marked by a special light buoy, *Fl. Y.2.5s*, exists in position 27° 04'.30 S 153° 08'.67 E.

Mariners are advised to navigate with caution in the area.

Chart temporarily affected - Aus 235 - Aus 236

440(T)/2009 AUSTRALIA - QUEENSLAND - Gladstone - Drilling operations completed

Former Notice - 165(T)/2009 is cancelled
Maritime Safety Queensland Notice 733(T)/2008, 45(T)/2009 (AA369681, AA382095)

Cancel this notice on receipt.

Chart formerly affected - Aus 244 - Aus 245 - AU5244X5

441(T)/2009 AUSTRALIA - QUEENSLAND - Shoalwater Bay - Live firing*Date* - Until 11 May 2009

Maritime Safety Queensland Notice 155(T)/2009 (AA394481)

Live firing activities will be conducted in the Shoalwater Bay training area during the period 27 April to 10 May 2009.

A marine danger area extends to all waters within a 3M radius of position 22° 23'.00 S 150° 30'.30 E.

All waters, creeks, beaches and other areas within the declared marine danger area are not available for access.

Chart temporarily affected - Aus 260 - Aus 367 - Aus 822 – AX 60260 - AU423150**442(T)/2009 AUSTRALIA - QUEENSLAND - Heskett Rock - Light beacon destroyed**

Maritime Safety Queensland Notice 198(T)/2009 (AA397837)

The south cardinal light beacon (20° 56'.19 S 149° 28'.96 E) has been destroyed.

Chart temporarily affected - Aus 251 - Aus 823 - Aus 824 - AU421149**443(T)/2009 AUSTRALIA - QUEENSLAND - Townsville - Depth information***Former Notice* - 95(T)/2009 is cancelled

Maritime Safety Queensland Notice 182(T)/2009 (AA397150)

Available depths as at 27 March 2009:

	<i>Metres</i>	<i>Remarks</i>
Sea Channel	11.7	
Platypus Channel	11.5	
Outer Harbour:		
* Arrival Channel	7.7	West of a line from dolphin across end of berth pocket to edge of arrival channel
* Departure Channel	11.6	
Inner Harbour:		
* Harbour	11.8	
Berths:		
* No 1	11.7	
* No 2	12.3	
* No 3	11.8	
No 4	10.5	
No 7	11.0	
* No 8	10.1	Seaward of 10 metre mark
* No 9	12.0	
No 10	9.6	To seaward dolphin
No 11	11.6	
CB Marine	1.9	
Between No 7 and No 8	10.4	Seaward of zero mark at No 7
* Between No 9 and No 10	10.6	Seaward of zero mark at No 10
* Ross River Channel	1.0	
Ross Creek	-	No declared depth

* Indicates revised entry.

Chart temporarily affected - Aus 256 - Aus 257 - AU5XX257

444(T)/2009 AUSTRALIA - QUEENSLAND - Townsville - Ross River - Dredging operations*Former Notice* - 267(T)/2009 is cancelled*Date* - Until 28 May 2009

Maritime Safety Queensland Notice 211(T)/2009 (AA398677)

The dredge *Elke-D* and support vessel are conducting dredging operations in the Ross River Channel (19° 15'.83 S 146° 50'.43 E).

The dredge will display appropriate lights and shapes and will monitor VHF Ch 12 and Ch 16.

Mariners are advised to navigate with caution in the area.

Chart temporarily affected - Aus 256 - Aus 257 - AU5XX257**445(T)/2009 AUSTRALIA - QUEENSLAND - Hinchinbrook Channel - Nav aids restored***Former Notice* - 215(T)/2009 is cancelled

Maritime Safety Queensland Notice 200/2009 (AA397902)

Cancel this notice on receipt.

Chart formerly affected - Aus 258 - Aus 259 - Aus 828 - AU419146 - AU5258P2 - AU5259P1**446(T)/2009 AUSTRALIA - QUEENSLAND - Upolu Reef - Obstructions***Date* - Until 31 July 2010

Maritime Safety Queensland Notice 183(T)/2009 (AA397149)

An obstruction exists in the vicinity of position 16° 41'.43 S 145° 52'.12 E.

Mariners are advised to navigate with caution in the area.

Chart temporarily affected - Aus 830 - AU417145**447(T)/2009 AUSTRALIA - QUEENSLAND - Yorkeys Knob - Dredging operations completed***Former Notice* - 820(T)/2008 is cancelled

Maritime Safety Queensland (AA398279)

Cancel this notice on receipt.

Chart formerly affected - Aus 262 - AU5262X4**448(T)/2009 AUSTRALIA - QUEENSLAND - Thursday Island - Depth information***Former Notice* - 351(T)/2008 is cancelled

Maritime Safety Queensland Notice 209(T)/2009 (AA398675)

Available depths as at 6 April 2009:

	<i>Metres</i>
Hovell Bar	3.7
* Main Wharf	3.1 (a sounding of 3.1m has been recorded approximately 60m south of Main Wharf. 4.1m alongside wharf)
* Caltex Wharf	4.1
* Engineers Wharf	3.5
* Inner Harbour	4.6
* Boat Channel	4.8
* Indicates new or revised entry.	

Chart temporarily affected - Aus 293 - Aus 299 - AU5XX299

449(T)/2009 AUSTRALIA - WESTERN AUSTRALIA - Cape Latouche Treville - Scientific instruments recovered
Former Notice - 886(T)/2008 is cancelled
 MetOcean Engineers (AA386757)

Cancel this notice on receipt.

Chart formerly affected - Aus 324

450(T)/2009 AUSTRALIA - WESTERN AUSTRALIA - Thevenard Island to Ashburton Road - Scientific instruments
Former Notice - 106(T)/2009 is cancelled
Date - Until 31 March 2010
 MetOcean Engineers (AA396978)

Scientific instruments exist as follows:

<i>Position</i>	<i>Remarks</i>
21° 22'.08 S 114° 50'.91 E	lit buoy <i>Fl(5)Y.20s</i>
21° 22'.08 S 114° 51'.00 E	5 poly floats
21° 21'.86 S 114° 51'.20 E	5 poly floats
21° 29'.92 S 115° 03'.05 E	5 poly floats
21° 39'.29 S 115° 00'.68 E	5 poly floats
21° 33'.41 S 115° 00'.92 E	5 poly floats
21° 31'.67 S 115° 07'.07 E	5 poly floats
21° 39'.34 S 115° 00'.80 E	5 poly floats

Chart temporarily affected - Aus 64 - Aus 743 - Aus 744 - AU422114

451(T)/2009 AUSTRALIA - WESTERN AUSTRALIA - Geraldton - Light buoy off station
 Geraldton Port Authority (AA397386)

The port lateral light buoy, *Fl(4)R.10s* (28° 42'.70 S 114° 34'.50 E (WGS84 datum)), is currently in position 28° 42'.64 S 114° 34'.55 E.

Vessels passing close to the south of the light buoy will have a least depth of *8.1m*

Chart temporarily affected - Aus 81 - Aus 751

452(T)/2009 AUSTRALIA - WESTERN AUSTRALIA - Fremantle - Dredging operations
Former Notice - 674(T)/2008 is cancelled
 Fremantle Ports Notice 3(T)/2009 (AA397954)

The dredge *Volvox Anglia* is conducting dredging operations in the Inner Harbour North Quay (32° 02'.70 S 115° 44'.64 E (WGS84 datum)) and Victoria Quay (32° 02'.91 S 115° 44'.76 E).

The dredge material will be discharged to the northeast of Victoria Quay J berth (32° 02'.62 S 115° 45'.05 E) and central to the Inner Harbour in existing deep pockets.

Mariners are advised to navigate with caution in the area.

Chart temporarily affected - Aus 112 - Aus 113 - AU5XX113

453(T)/2009 AUSTRALIA - WESTERN AUSTRALIA - Kwinana - Light unlit
 Fremantle Ports Notice 5(T)/2009 (AA398201)

The light K1777.15 (32° 12'.57 S 115° 46'.09 E) is unlit.

Chart temporarily affected - Aus 114 - Aus 117 - AX 70117 - AU5111X4

454(T)/2009 AUSTRALIA - WESTERN AUSTRALIA - Albany - Dredging operations completed

Former Notice - 226(T)/2009 is cancelled
Albany Port Authority Notice 1(T)/2009 (AA384588)

Cancel this notice on receipt.

Chart formerly affected - Aus 109 - AU5XX109**455(T)/2009 AUSTRALIA - SOUTH AUSTRALIA - Point Lowly - Light unreliable**
Flinders Ports (AA398661)

The light K1948 (32° 59'.98 S 137° 47.13 E (WGS84 datum)) is unreliable.

Chart temporarily affected - Aus 136 - Aus 444 - Aus 778**456(T)/2009 AUSTRALIA - SOUTH AUSTRALIA - Largs Bay - Light buoy off station**
Department for Environment and Heritage (AA397712)

The special light buoy, *Fl. Y.5s* (34° 49'.29 S 138° 25'.06 E (WGS84 datum)), is off station.

Chart temporarily affected - Aus 130 - Aus 138 - Aus 780 - Aus 781 - AU435138 - AU5137X8**457(T)/2009 AUSTRALIA - SOUTH AUSTRALIA - Semaphore South - Harbour works**

Date - Until 15 July 2009
Department for Transport, Energy and Infrastructure SA Notice 19/2009 (AA398100)

Works associated with the refurbishment of the breakwater are in progress in an area bounded by the following positions:

34° 50'.73 S 138° 28'.13 E
34° 50'.73 S 138° 28'.46 E
34° 51'.27 S 138° 28'.46 E
34° 51'.27 S 138° 28'.13 E

The barge and tug will display appropriate lights and shapes.

Mariners are advised to navigate with caution in the area.

Chart temporarily affected - Aus 130 - Aus 137**458(T)/2009 AUSTRALIA - SOUTH AUSTRALIA - Glenelg - Restricted area; light buoys**

Former Notice - 490(T)/2002 is cancelled
Department for Transport, Energy and Infrastructure SA (AA398751)

A restricted area, marked by light buoys, exists bounded by the following:

<i>Position (WGS84 datum)</i>	<i>Remarks</i>
34° 58'.02 S 138° 30'.51 E	
34° 58'.02 S 138° 30'.19 E	west cardinal light buoy, Q(9) 15s
34° 58'.23 S 138° 30'.29 E	west cardinal light buoy, Q(9) 15s
34° 58'.46 S 138° 30'.56 E	

Chart temporarily affected - Aus 125 - Aus 781

459(T)/2009 AUSTRALIA - TASMANIA - Hobart - Depth information*Former Notice - 1126(T)/2005 is cancelled*

Tasports (AA397043, AA397044)

Available depths as at 3 March 2009:

	<i>Metres</i>
* Princes 1	7.4
Princes Int	7.6
* Princes 2	7.8
* Princes 3	8.5
* Princes 4	7.5
* Elizabeth St South	9.8 (6.0m first 20m inner end)
* Macquarie 1	6.8 (4.5m first 20m inner end)
* Macquarie 2	9.3
* Macquarie 3	10.0
Macquarie 4	13.0
* Macquarie 5	12.0
* Macquarie 6	11.0
Selfs Point	14.4
* Risdon 1	9.2
* Risdon 2	10.0
* Risdon Swing	10.0 (from Porter Pt to SE 300 x 430m)

* Indicates new or revised entry.

Chart temporarily affected - Aus 172**460(T)/2009 AUSTRALIA - TASMANIA - Spring Bay - Depth information***Former Notice - 891(T)/2008 is cancelled*

Tasports (AA397043, AA397044)

Available depths as at 3 March 2009:

<i>Berth</i>	<i>Metres</i>
Spring Bay Berth	11.0
Spring Bay Basin	10.5

* Indicates revised entry.

Chart temporarily affected - Aus 175**461(T)/2009 AUSTRALIA - TASMANIA - Ulverstone - Lights relit***Former Notice - 397(T)/2009 is cancelled*

Marine and Safety Tasmania Notice M52/2009 (AA397852)

Cancel this notice on receipt.

Chart formerly affected - Aus 164 - Aus 799 - AU442146 - AU5164P2**462(T)/2009 AUSTRALIA - TASMANIA - Ulverstone - Drilling operations completed***Former Notice - 340(T)/2009 is cancelled*

Marine and Safety Tasmania Notice M43/2009 (AA390812)

Cancel this notice on receipt.

Chart formerly affected - Aus 164 - AU5164P2

463(T)/2009 AUSTRALIA - VICTORIA - Port Phillip - Rip Bank - Survey operations completed

Former Notice - 398(T)/2009 is cancelled
Victorian Notice 43(T)/2009 (AA396371)

Cancel this notice on receipt.

Chart formerly affected - Aus 143 - Aus 144 - Aus 158 - Aus 788 - AU439144**464(T)/2009 AUSTRALIA - VICTORIA - Port Phillip - Restricted areas**

Former Notice - 277(T)/2009 is cancelled
Date - Until 1 September 2009
Victorian Notice 48(T)/2009 (AA398283)

A restricted access area has been declared around the dredge vessels during their operation or presence in Port Phillip and Yarra River as follows:

In Yarra River an area comprising the Port of Melbourne waters and any part of Port of Melbourne land that is within 100 metres radius of the dredges *Queen of the Netherlands*, *Cornelis Zanen* or *Prins der Nederlanden*, when either vessel is in Yarra River, north of an imaginary line connecting 37° 51'.17 S 144° 54'.48 E and 37° 50'.97 S 144° 54'.75 E.

In Port Phillip around the dredge vessels an area comprising the Port of Melbourne waters and any part of port of Melbourne land that is within 200 metres radius of the dredges *Queen of the Netherlands*, *Cornelis Zanen* or *Prins der Nederlanden*, when either vessel is south of an imaginary line connecting 37° 51'.17 S 144° 54'.48 E and 37° 50'.97 S 144° 54'.75 E, being an area within Port Phillip (including Hobsons Bay).

Further details regarding the operations can be obtained from the Port of Melbourne Corporation's Channel Deepening website www.channelproject.com or on telephone 1-800 731 022.

Mariners are advised to navigate with caution in the area.

Chart temporarily affected - Aus 143 - Aus 144 - Aus 154 - Aus 155 - Aus 158 - AU438144 - AU439144 - AU5XX154**465(T)/2009 AUSTRALIA - VICTORIA - Port Phillip - Geelong - Depth information**

Former Notice - 952(T)/2006 is cancelled
Victorian Notice 31(T)/2005, 104(T)/2005 (AA131863, AA203894)

Available depths as at 1 March 2005:

<i>Berth</i>	<i>Metres</i>
* Bulk Grain Pier 1	9.0
* Bulk Grain Pier 2	11.0
Point Wilson Jetty North	8.6
* Point Henry Pier Alcoa	11.6
* Indicates new or revised entry.	

A 7.6m shoal patch exists 125 metres southwest of the Point Richards Channel No 14 beacon (38° 07'.30 S 144° 33'.12 E).

Chart temporarily affected - Aus 153 - Aus 157 - AU5XX153**466(T)/2009 AUSTRALIA - VICTORIA - Port Phillip - Geelong - Corio Quay - Harbour works**

Date - Until 31 December 2009
Victorian Notice 51(T)/2009 (AA398688)

Works associated with the construction of the new Corio Quay No 4 berth facility are in progress.

The barge *Jub* and support vessels *Taurus* and *Taree* are conducting piling operations.

Mariners are advised to navigate with caution in the area.

Chart temporarily affected - Aus 153 - Aus 157 - AU5XX153

467(T)/2009 AUSTRALIA - VICTORIA - Port Phillip - Sandringham - Dredging operations completed

Former Notice - 345(T)/2009 is cancelled
Victorian Notice 30(T)/2009 (AA390788)

Cancel this notice on receipt.

Chart formerly affected - Aus 143 - Aus 155 - AU438144 - AU5155P4**468(T)/2009 AUSTRALIA - VICTORIA - Bass Strait - Pipeline**

Date - Until 30 June 2009
Nexus Energy (AA397888, AA397889)

A pipeline is being laid by vessels *Aussie 1* and *Maersk Responder* and support vessels *Lewek Kea*, *Ark Sydney and Unlimited* between production wells Patricia (38° 01'.60 S 148° 26'.99 E (WGS84 datum)), Longtom 4 (38° 06'.29 S 148° 19'.98 E) and Longtom 3 (38° 05'.60 S 148° 18'.64 E).

Chart temporarily affected - Aus 357A - Aus 422 - Aus 423**469(T)/2009 AUSTRALIA - TEMPORARY AND PRELIMINARY NOTICES**

Former Notice - 127(T)/2009 is cancelled
Australian Hydrographic Service (AA381714)

<i>Notice</i>	<i>Charts affected</i>	<i>Locality and Subject</i>
		CORAL SEA
835/2008	Aus 4060-4602	<i>Capel Bank to Nova Bank</i> Shoaling
653/2001	Aus 614	<i>Lihou Reef</i> Shoals
		NEW SOUTH WALES
317/2006	Aus 191	<i>Batemans Bay</i> Shoaling; buoy
1035/2008	Aus 193-807-808-AX 0808E- 60193-70193-AU5XX193	<i>Beecroft Peninsula</i> Light buoy off station
1292/2008	Aus 197-361-808-809- AX 0808E-0809E-63200- AU434151	<i>Bondi</i> Scientific instruments southeastwards
76/2009	Aus 198-199-AU5198X9.....	<i>Botany Bay</i> Scientific instrument
318/2009	Aus 198-199-AU5198X9.....	Light buoys moved
257/2009	Aus 216-AU5XX204.....	<i>Brisbane Water</i> Light beacon destroyed
483/2007	Aus 361-809	<i>Broken Bay</i> Fish aggregating devices eastwards
708/2008	Aus 195-197-806-807-808- 809-810-811-812-813- AX 0808E-0809E	<i>Green Cape to Ballina Head</i> Scientific instruments
316/2009	Aus 193-807-808-AX 0808E- 60193-70193-AU5XX193	<i>Jervis Bay</i> Scientific instruments

<i>Notice</i>	<i>Charts affected</i>	<i>Locality and Subject</i>
		<i>Manly</i>
802/2008	Aus 197-200-201-AX 63200-AU5X200E	Scientific instruments
		<i>Newcastle</i>
199/2008	Aus 207-208	Obstructions
648/2008	Aus 207-208	Harbour works; light beacons
866/2008	Aus 207-208-361-362-809-AX 0809E-AU433151-5XX208	Obstructions
428/2009	Aus 207-208-AU5XX208	Depth information
		<i>Point Long Nose</i>
1036/2008	Aus 197-198-808-AX 0808E-AU5198X9	Offshore works
		<i>Port Hacking</i>
208/2009	Aus 808-AX 0808E-.....AU435151	Scientific instrument southeastwards
		<i>Port Jackson</i>
454/2006	Aus 202-AU5X200W.....	Shoaling
47/2007	Aus 200-201-AX 63200	West Channel-Light beacon destroyed; light buoy.
650/2007	Aus 200-203	Homebush Bay-Scientific instruments
		<i>Port Kembla</i>
864/2008	Aus 195-361-808-AX 0808E-AU435150-5XX194	Obstructions
317/2009	Aus 194-AU5XX194.....	Depth information
		NORTHERN TERRITORY
		<i>Darwin</i>
242/2007	Aus 26-28-AX 72026	Obstruction; light buoys
662/2007	Aus 28	Depth information
759/2008	Aus 26-AX 72026	Light buoy off station
222/2009	Aus 24-AU5XXX24	Light buoy off station
		<i>Joseph Bonaparte Gulf</i>
505/2008	Aus 316-318-725-726	Gas field development
		<i>Melville Island</i>
882/2006	Aus 20-309-722-AX 70722-72722	Reef delineation
		<i>Troubadour Shoals</i>
950/2004	Aus 309-311-315	Scientific instruments
		WESTERN AUSTRALIA
99/2009	Aus 26-29-309-315-316-319-320-722-AX 0309F-0315F-0319F-72026-72309-72722-AU313125-313126-313127-313128-314123-314124-413129	Scientific instruments
		QUEENSLAND
		<i>Abbot Point</i>
460/2008	Aus 255	Light buoy established
664/2008	Aus 255-826	Scientific instruments
1044/2008	Aus 255-AU5XX255.....	Harbour works
1152/2008	Aus 255-AU5XX255.....	Depth information

<i>Notice</i>	<i>Charts affected</i>	<i>Locality and Subject</i>
		<i>Airlie Beach</i>
819/2008	Aus 252-253-268-AU5268P2	Light buoys established
1097/2008	Aus 252-253-268-AU5268P2	Wreck
214/2009	Aus 252-253-268-AU5268P2	Wreck
		<i>Albatross Bay</i>
218/2009	Aus 4-701-AU413141	Scientific instrument
		<i>Arkwright Point</i>
1093/2008	Aus 365	Scientific instrument
		<i>Bowen</i>
1079/2007	Aus 268	Wreck
		<i>Brisbane River</i>
1090/2006	Aus 238	Quarries Reach-Lights altered
830/2007	Aus 238	Cameron Rocks-Light unlit
1131/2007	Aus 237	Fisherman Island-Floating pipeline
1132/2007	Aus 237-238	Lytton Reach-Mooring blocks; pipeline
751/2008	Aus 237	Fisherman Islands-Harbour works
810/2008	Aus 237-238-AU5237X8.....	Depth information
814/2008	Aus 238-AU5237X8.....	Newstead-Harbour works
1145/2008	Aus 237-AU5237X8.....	Fisherman Islands-Moorings
1146/2008	Aus 238-AU5237X8.....	Quarries Reach to Parker Island Reach-Harbour works
1193/2008	Aus 237-AU5237X8.....	Fisherman Islands-Harbour works
436/2009	Aus 237-AU5237X8.....	Pelican Banks Reach-Light buoy repositioned
437/2009	Aus 238-AU5237X8.....	Hamilton Reach-Drilling operations
		<i>Bundaberg</i>
657/2008	Aus 242	Burnett River-Sea Reach-Light beacon destroyed
91/2009	Aus 242-243-AU5XX242	Depth information
		<i>Cairns</i>
1313/2008	Aus 262-263-264-830-..... AX 63262-AU417145- 5262X4	Depth information
		<i>Cape Bowling Green</i>
373/2007	Aus 371-826-827	Light buoy off station
114/2008	Aus 826-827	Scientific instrument
		<i>Cape Cleveland</i>
1198/2008	Aus 256-827-AU320147	Scientific instrument
		<i>Cape Moreton</i>
429/2009	Aus 236-364-814	Obstruction southeastwards
430/2009	Aus 235-364-365-814.....	Obstructions
		<i>Cape Upstart</i>
94/2009	Aus 826-827-AU320147	Wreck northwards
		<i>Cassady</i>
755/2008	Aus 371-372-827-828.....	Light beacon destroyed
		<i>Cooktown</i>
878/2006	Aus 270	Shoaling
876/2008	Aus 270-AU5270P6.....	Depth information
		<i>Double Island</i>
216/2009	Aus 830-AU417145	Scientific instrument

<i>Notice</i>	<i>Charts affected</i>	<i>Locality and Subject</i>
		<i>Gladstone</i>
654/2007	Aus 244-245-246	Depth information
204/2008	Aus 244-245	Light beacon destroyed
974/2008	Aus 244-245-AU5244X5	Light beacon destroyed
975/2008	Aus 244-245-AU5244X5	Fishermans Landing-Harbour works
		<i>Gold Coast Seaway</i>
599/2008	Aus 814	Shoaling
		<i>Goold Island</i>
1099/2008	Aus 828-AU419146	Wreck
		<i>Great Sandy Strait</i>
248/2008	Aus 241-365-817	Light beacon destroyed
		<i>Hay Point</i>
1149/2008	Aus 249-250-AU5250P2	Drilling operations
168/2009	Aus 249-250-AU5250P2	Depth information
		<i>Hay Point to Prudhoe Island</i>
328/2009	Aus 249-250-823-	Scientific instruments
	AU422149-5250P2	
		<i>Heron Island</i>
111/2008	Aus 819	Scientific instruments
		<i>Hesket Rock</i>
442/2009	Aus 251-823-824-AU421149	Light beacon destroyed
		<i>Hook Reef</i>
930/2007	Aus 254-825	Beacon destroyed
		<i>Horn Island</i>
1139/2007	Aus 292-376	Outfall
		<i>Hydrographers Passage</i>
266/2009	Aus 821-AU420150	Depths
		<i>Karamea Bank</i>
166/2009	Aus 367-820-AU323151	Wreck
		<i>Karumba</i>
937/2007	Aus 6	Obstruction; buoy
1051/2008	Aus 6	Light beacon withdrawn
173/2009	Aus 6	Depth information
219/2009	Aus 6	Light beacon destroyed
220/2009	Aus 6	Light buoy off station
221/2009	Aus 6	Light buoy off station
		<i>Kirra Point</i>
391/2008	Aus 813-814	Offshore works
		<i>Laguna Quays</i>
1052/2006	Aus 252	Reduced depth
		<i>Lisa Jane Shoals</i>
1305/2008	Aus 247-819-820-AU424151	Scientific instrument
		<i>Lizard Island</i>
118/2008	Aus 832	Scientific instruments
		<i>Low Islets</i>
833/2007	Aus 373-830-831	Sector light trial extended

469(T)/2009 (continued)

<i>Notice</i>	<i>Charts affected</i>	<i>Locality and Subject</i>
		<i>Lucinda</i>
463/2008	Aus 259	Light buoy repositioned
		<i>Mackay</i>
387/2009	Aus 250	Depth information
		<i>Mooloolaba</i>
324/2009	Aus 235	Shoaling
		<i>Moreton Bay</i>
102/2007	Aus 235-236	Light sector partially undefined.
694/2007	Aus 235-236	Brisbane River-Depth information and keel clearances
733/2007	Aus 236	Tangalooma Point-Wreck: buoy
774/2007	Aus 236	Scarborough-Shoaling
710/2008	Aus 235-236	Spitfire Channel-Light buoys established
711/2008	Aus 236	Wellington Point-Harbour works
712/2008	Aus 236-237-814	Light beacon destroyed; light buoys established
750/2008	Aus 236	Light beacon damaged
1089/2008	Aus 235-236-814	Spitfire Channel-Wreck southwards
1091/2008	Aus 236	Redcliffe-Scientific instrument southeastwards
80/2009	Aus 235-236	North East Channel-Light buoy off station
83/2009	Aus 236	Ship to ship transfer
84/2009	Aus 236	Shoaling
86/2009	Aus 236	Waterloo Bay-Dredging operations
87/2009	Aus 236-AU5237X8	Wynnum-Shoaling
261/2009	Aus 236	Scarborough-Harbour works; light buoys
321/2009	Aus 236-AU5237X8	Manly-Light beacon established
377/2009	Aus 235-236	Skirmish Passage-Wreck
380/2009	Aus 236-814	Bramble Bay-Bridge construction
433/2009	Aus 235-236	North East Channel-Light buoy off station
434/2009	Aus 236-AU5237X8	Manly-Harbour works; dredging operations
435/2009	Aus 236-AU5237X8	Wynnum-Obstruction
439/2009	Aus 235-236	Pumicestone Channel-Wreck
		<i>Mourilyan</i>
665/2008	Aus 258	Depth information
		<i>Pioneer Bay</i>
1244/2006	Aus 268	Harbour works; light buoys.
663/2008	Aus 252-253-268	Dredging operations
		<i>Point Danger to Point Lookout</i>
209/2009	Aus 813-814-AU429153	Scientific instruments
		<i>Port Alma</i>
92/2009	Aus 247	Light buoy off station
167/2009	Aus 247-AU5247P1	Depth information
		<i>Port Douglas</i>
117/2008	Aus 270	Depth information
		<i>Port Musgrave</i>
73/2008	Aus 701	Scientific instruments
		<i>Pumicestone Channel</i>
928/2008	Aus 235-236	Light beacon destroyed
		<i>Rocky Point</i>
170/2009	Aus 829-AU418146	Light beacon withdrawn

<i>Notice</i>	<i>Charts affected</i>	<i>Locality and Subject</i>
		<i>Shoalwater Bay</i>
327/2009	Aus 260-367-822-AX 60260-AU423150-5261P1	Live firing
441/2009	Aus 260-367-822-AX 60260-AU423150	Live firing
		<i>Skardon River</i>
671/2006	Aus 701	Shoaling
890/2007	Aus 701	Shoaling
		<i>Southport</i>
79/2009	Aus 814	Harbour works
259/2009	Aus 814	Dredging operations
		<i>Surprise Rock</i>
329/2009	Aus 252-253-824-AU421149	Light beacon destroyed
		<i>Swains Reef</i>
311/2008	Aus 367-426	Scientific instruments
		<i>Thread Shoal to Myrmidon Reef</i>
116/2008	Aus 828	Scientific instruments
		<i>Thursday Island</i>
666/2008	Aus 293-299	Light buoy off station
217/2009	Aus 293-299-AU5XX299	Madge Reefs-Light unlit
448/2009	Aus 293-299-AU5XX299	Depth information
		<i>Townsville</i>
281/2006	Aus 256-257-AU5XX257	Wreck
1248/2008	Aus 256-257-AU5XX257	Light buoy
443/2009	Aus 256-257-AU5XX257	Depth information
444/2009	Aus 256-257-AU5XX257	Dredging operations
		<i>Upolu Reef</i>
446/2009	Aus 830-AU417145	Obstructions
		<i>Weipa</i>
936/2007	Aus 4	Light beacon destroyed
670/2008	Aus 4	Light buoy withdrawn
1103/2008	Aus 4-AU5XX4P1	Depth information
		SOUTH AUSTRALIA
		<i>Barker Inlet</i>
830/2008	Aus 130-780-781	Shoaling
		<i>Gleneel</i>
1161/2008	Aus 125	Shoaling
458/2009	Aus 125-781	Restricted area; light buoys
		<i>Holdfast Bay</i>
831/2008	Aus 125-345-780-781	Scientific instruments
		<i>Largs Bay</i>
456/2009	Aus 130-138-780-781- AU435138-5137X8	Light buoy off station
		<i>Margaret Brock Reef</i>
452/2002	Aus 127	Structure
		<i>Mundoora Bay</i>
414/2008	Aus 344-778	Light beacon unlit

<i>Notice</i>	<i>Charts affected</i>	<i>Locality and Subject</i>
		<i>Neptune Islands</i>
1208/2008	Aus 343-AX 0343E	Scientific instrument
		<i>O'Sullivan Beach</i>
227/2009	Aus 125	Dredging operations
		<i>Point Lowly</i>
455/2009	Aus 136-444-778	Light unreliable
		<i>Port Adelaide</i>
720/2008	Aus 137	Shoaling
110/2009	Aus 130-137	Harbour works
393/2009	Aus 130-137	Wreck
		<i>Port Augusta</i>
265/2008	Aus 344-778	Light beacon destroyed
415/2008	Aus 344-778	Two Hummock Point-Light beacon altered
		<i>Port Stanvac</i>
721/2008	Aus 125-780-781	Obstruction; submarine pipeline; light buoys
335/2009	Aus 125-780-781	Scientific instrument
		<i>Rapid Bay</i>
765/2008	Aus 345-347-780	Harbour works
		<i>Semaphore South</i>
457/2009	Aus 130-137	Harbour works
		<i>Taylor Island</i>
988/2008	Aus 134-343-345-444-776-.. AX 0343E-0776E	Light unlit
		<i>Thevenard</i>
1170/2006	Aus 120	Light beacon destroyed, temporary light
		<i>Wallaroo</i>
173/2008	Aus 777	Light beacon destroyed
176/2009	Aus 777	Depth information
		<i>Whidbey Isles to Kangaroo Island</i>
334/2009	Aus 342-343-345-346-444- AX 0343E-AU336135	Scientific instruments
		<i>Wirrina Cove</i>
268/2008	Aus 125	Shoaling
		<i>Yankalilla Bay</i>
832/2008	Aus 345-780	Light buoy off station
		TASMANIA
		<i>Ansons Bay</i>
112/2009	Aus 767	Beacon destroyed
		<i>Bell Bay</i>
220/2008	Aus 167-168	Light beacon destroyed
		<i>Burnie</i>
781/2006	Aus 163	Depth information
990/2008	Aus 163-799-AU5163P1	Harbour works
		<i>D'Entrecaseaux Channel to Norfolk Bay</i>
1087/2007	Aus 169-171-173-174	Scientific instruments

<i>Notice</i>	<i>Charts affected</i>	<i>Locality and Subject</i>
905/2004	Aus 173	<i>D'Entrecasteaux Channel</i> Spat collection; light buoys
339/2009	Aus 164-AU5164P1	<i>Devonport</i> Depth information
922/2005	Aus 179-800	<i>Furneaux Group</i> Shoaling
131/2008	Aus 169	<i>Georges Bay</i> Shoaling
509/2008	Aus 171-172	<i>Hobart</i> Obstructions
459/2009	Aus 172	Depth information
1106/2008	Aus 168-AU5167X8	<i>Launceston</i> Dredging operations
1211/2008	Aus 794	<i>Maatsuyker Island</i> Scientific instruments southeastwards
890/2008	Aus 177	<i>Macquarie Harbour</i> Lights unlit
417/2008	Aus 355-766	<i>Maria Island</i> Scientific instrument eastwards
178/2009	Aus 170	Harbour works
1129/2005	Aus 169-171	<i>Marion Narrows</i> Beacon destroyed
906/2004	Aus 171	<i>Norfolk Bay</i> Spat collection; light buoys
562/2008	Aus 171-795	Scientific instrument
337/2009	Aus 171-796	Obstructions
416/2008	Aus 171-173-174	<i>North West Bay</i> Wreck
228/2009	Aus 167-AU5167X8	<i>Port Dalrymple</i> Bell Bay-Drilling operations
833/2008	Aus 171-173-174-795	<i>River Derwent</i> Scientific instruments
1055/2008	Aus 167-799-AU442146-..... 5167X8	<i>River Tamar</i> Reclamation works
113/2009	Aus 168-AU5167X8	Batman Bridge-Reduced clearance
396/2009	Aus 168-AU5167X8	Kings Wharf-Dredging operations
1321/2008	Aus 173-174-795	<i>Southport</i> Harbour works
460/2009	Aus 175	<i>Spring Bay</i> Depth information
274/2009	Aus 795-796	<i>Storm Bay</i> Scientific instruments

<i>Notice</i>	<i>Charts affected</i>	<i>Locality and Subject</i>
		TIMOR SEA
		<i>Osborn Passage</i>
982/2008	Aus 314-319-4721-4722- AU313124	Drilling operations
		<i>Sahul Banks</i>
476/2006	Aus 312	Scientific instruments
223/2009	Aus 312-4721-AX 0312F- 4721F-AU311126	Navaid; racon non operational
		<i>Van Cloon Shoal</i>
268/2009	Aus 315-318-4721- AX 0315F-4721F- AU313126-313127-414126	Seismic survey southeastwards
		VICTORIA
		<i>Barry Beach</i>
1002/2004	Aus 181-182	Shoaling
		<i>Barwon River</i>
1036/2007	Aus 143-144	Lights trial
		<i>Bass Strait</i>
468/2009	Aus 357a-422-423	Pipeline
		<i>Corner Inlet</i>
667/2007	Aus 181	Light destroyed
1213/2008	Aus 181-357A-802-..... AU439146	Shoaling
		<i>Lakes Entrance</i>
799/2007	Aus 357a	Scientific instrument
		<i>Ninety Mile Beach</i>
458/2007	Aus 357a	Obstructions
		<i>Port Phillip</i>
351/2005	Aus 143-144-158	South Channel-Shoaling
796/2007	Aus 143-158	South channel-Obstruction
797/2007	Aus 143-158	South Channel-Obstruction
897/2007	Aus 154	Port Melbourne-Shoaling
996/2007	Aus 143-157	Geelong-Navaid replacement completed
997/2007	Aus 154	Station Pier-Shoaling
223/2008	Aus 143-154-155	Port Melbourne-Princes Pier-Harbour works
361/2008	Aus 143-155	Ricketts Point-Beacon destroyed
475/2008	Aus 154-155	Port Melbourne-Dredging operations
510/2008	Aus 143-144-158	Dredging operations
513/2008	Aus 154	River Yarra-Light beacon withdrawn
565/2008	Aus 154	River Yarra-Harbour works; traffic management system
893/2008	Aus 154-AU5XX154.....	River Yarra-Light beacon withdrawn
992/2008	Aus 154-AU5XX154.....	Hobsons Bay-Princes Pier-Trial nav aids
1212/2008	Aus 154-AU5XX154.....	Port Melbourne-River Yarra-Light buoys; restricted area
115/2009	Aus 157-AU439144	Clifton Springs-Harbour works
118/2009	Aus 143-155-AU438144	Submarine pipeline repair works
120/2009	Aus 154-AU5XX154.....	River Yarra-Harbour works
229/2009	Aus 143-155-AU438144	Port Melbourne Channel-Dredging operations; construction works
230/2009	Aus 154-AU5XX154.....	Port Melbourne-Depth information
278/2009	Aus 143-144-154-155-158- AU438144-439144-5XX154	Beacon upgrade works
341/2009	Aus 143-144-158-349-422- 487-788-AU439144	Point Lonsdale-Light to be altered
342/2009	Aus 143-144-158-AU439144	Queenscliff-Light to be altered
343/2009	Aus 154-AU5XX154.....	Williamstown Channel-Light beacon destroyed

<i>Notice</i>	<i>Charts affected</i>	<i>Locality and Subject</i>
		<i>Port Phillip (continued)</i>
344/2009	Aus 143-154-155-..... AU438144-5XX154	Hobsons Bay-Dredging operations
399/2009	Aus 143-144-158-AU439144	South Channel-Light buoys established
400/2009	Aus 143-144-158-349-788- AU439144	Rip Bank to South Channel-Lights established
464/2009	Aus 143-144-154-155-158- AU438144-439144-5XX154	Restricted areas
465/2009	Aus 153-157-AU5XX153	Depth information
466/2009	Aus 153-157-AU5XX153	Corio Quay-Harbour works
		<i>Western Port</i>
514/2008	Aus 150-151	Phillip Island-Shoaling northwards
		WESTERN AUSTRALIA
		<i>Albany</i>
729/2006	Aus 109	Light beacon; light buoy
		<i>Alkimos Reef</i>
272/2009	Aus 334-754-AX 0334E-..... 0754E-66002-AU432115	Scientific instruments
		<i>Barrow Island</i>
174/2009	Aus 327-328-415-416-..... AX 0415F-AU320114	Seismic survey northwards
		<i>Broome</i>
893/2007	Aus 50	Wreck
		<i>Browse Island</i>
100/2009	Aus 319-AX 0319F-..... AU314123	Scientific instrument northwestwards
101/2009	Aus 319-AX 0319F-..... AU314123	Scientific instruments
		<i>Cape Latouche Treville</i>
271/2009	Aus 324	Scientific instrument
		<i>Dampier</i>
1034/2007	Aus 57-58-59	Depth information
218/2008	Aus 57-58-59	Anchorage
259/2008	Aus 58-59	Light buoy established
260/2008	Aus 57-58-59	Dredging operations; exclusion zone
314/2008	Aus 57-58	Obstructions
1207/2008	Aus 57-58-59	Shoaling; lights established
		<i>Dampier Archipelago</i>
523/2004	Aus 327-415	Scientific instruments northwestwards
		<i>Emu Point</i>
764/2008	Aus 110-118-759	Light
		<i>Esperance</i>
779/2006	Aus 119	Scientific instrument
616/2008	Aus 119	Depth information
1158/2008	Aus 119-762	Scientific instrument to be established
		<i>Fremantle</i>
745/2007	Aus 114	James Point-Scientific instruments
128/2008	Aus 113	Depth information
470/2008	Aus 112-113-AX 63112	Obstruction; submarine pipeline; light buoys
273/2009	Aus 112-754-AX 0754E-..... 63112-66002	Anchorage
452/2009	Aus 112-113-AU5XX113	Dredging operations

<i>Notice</i>	<i>Charts affected</i>	<i>Locality and Subject</i>
1260/2006	Aus 755-756	<i>Geographe Bay</i> Scientific instrument.
174/2007	Aus 81	<i>Geraldton</i> Harbour works.
760/2008	Aus 81-751	Light buoy withdrawn
946/2008	Aus 81	Depth information
451/2009	Aus 81-751	Light buoy off station
1255/2008	Aus 327	<i>Glomar Shoal</i> Scientific instruments northwards
333/2009	Aus 109-110-118- AU5XX109	<i>King George Sound</i> Scientific instruments
453/2009	Aus 114-117-AX 70117- AU5111X4	<i>Kwinana</i> Light unlit
270/2009	Aus 323-324	<i>Lacepede Channel to James Price Point</i> Scientific instruments
102/2009	Aus 319-320-729-AX 0319F- AU314123	<i>Maret Islands</i> Scientific instruments
1306/2006	Aus 63-328-743	<i>Mary Anne Island</i> Light re-established; characteristics altered.
391/2009	Aus 328-329-744-AU422114	<i>Muiron Islands</i> Oil field development northwestwards
1256/2008	Aus 327	<i>North Rankin</i> Scientific instrument
543/2007	Aus 328-329-744	<i>North West Cape</i> Wells northward
108/2009	Aus 328-329-744-AU422114	Scientific instruments northwestwards
1156/2008	Aus 72-329-330-745- AU323113-324113	<i>North West Cape to Point Maud</i> Scientific instruments
269/2009	Aus 323	<i>Packer Island to North Head</i> Scientific instruments
410/2008	Aus 52-53-54-326-739-740	<i>Port Hedland</i> Drilling operations
506/2008	Aus 53-739-740	Obstruction
560/2008	Aus 52-53-326-739-740	Scientific instruments; diving operations
827/2008	Aus 54	Lights established
887/2008	Aus 54	Light beacon destroyed
1254/2008	Aus 52-53-54-739-740	Scientific instruments
104/2009	Aus 54	Depth information
331/2009	Aus 52-53-54	Harbour works
332/2009	Aus 52-53-54	Dredging operations

<i>Notice</i>	<i>Charts affected</i>	<i>Locality and Subject</i>
224/2009	Aus 57-58-59-327-328-415-416-741-742-AX 0415F-AU421115-421116	<i>Rankin Bank to Dampier</i> Production wells; platform; pipeline to be established
225/2009	Aus 57-58-59-327-328-741-742-AU320115-421115-421116	Scientific instruments
882/2008	Aus 318-319-320-728	<i>Rothery Reef</i> Shoal
1157/2008	Aus 334-754-AX 0334E-..... 0754E-66002-AU432115	<i>Rottnest Island</i> Scientific instrument to be established
103/2009	Aus 43	<i>Scott Reef</i> Scientific instruments
450/2009	Aus 64-743-744-AU422114	<i>Thevenard Island to Ashburton Road</i> Scientific instruments
1052/2008	Aus 40-732-733	<i>Yampi Sound</i> Comber Rock-Buoy off station
1142/2008		AUSTRALIA
746/2008	Aus 197-808-AX 0808E	ANTT 2009 Scientific instruments northeastwards
		EAST TIMOR
727/2006	Aus 901	<i>Dili</i> Light unlit
309/2005	Aus 311-312-313-4721	<i>Pulau Jaco</i> Light unlit
		INDIAN OCEAN
1135/2006	Aus 4071	Scientific instruments
800/2005	Aus 607	Light beacon
945/2008	Aus 4070-4071	<i>Sumatera</i> Scientific instruments westwards
		PACIFIC OCEAN
941/2008	Aus 399-462-4622	Scientific instruments
		PAPUA NEW GUINEA
609/2008	Aus 399-683-4622	<i>Bougainville Island</i> Lights unlit
557/2008	Aus 545-554	<i>Cape Gazelle</i> Light unlit
406/2008	Aus 547-4622	<i>Kimbe Island</i> Light unlit
121/2008	Aus 523	<i>Lae</i> Wreck
355/2008	Aus 523	Light buoy established
824/2008	Aus 391-662	<i>Los Negros Island</i> Light unlit

469(T)/2009 (continued)

<i>Notice</i>	<i>Charts affected</i>	<i>Locality and Subject</i>
967/2005	Aus 646	<i>Madang</i> Horizontal datum anomaly
554/2008	Aus 508-628	<i>Nuakata Passage</i> Light unlit
404/2008	Aus 379-505-4620	<i>Port Moresby</i> Fish aggregation device southwards
1102/2008	Aus 399-AU407155	<i>Rantan Island</i> Light unlit

HYDROGRAPHIC REPORTS

<i>Locality</i>	<i>Report</i>	<i>Ship/Authority</i>	<i>Observer</i>
MISC- Aus 422	Chart error		J Lettens
PNG- Kavieng	Wrecks		D Amon

NAVIGATION WARNINGS

The following radio messages have been received during the period to 9 April 2009. Signal copies of these messages may be destroyed. It is recommended that the reprint of Navigational Warnings should be kept in a file or a book divided into areas. Cancellation should be made on receipt of signals and reprints.

Rigs on location other than those listed in the latest Section III summary are the subject of Radio Navigational Warnings. Rigs in transit will not be the subject of Warnings.

AUSCOAST WARNING

- 080 Drill rig *Songa Mercur* in position 21° 31'.70 S 114° 05'.01 E. 2.5M clearance requested.
 081 Cancelled.
 082 Cancelled.
 083 Drill rig *Nan Hai 6* in position 21° 28'.31 S 113° 59'.10 E. 2.5M clearance requested.
 084 Drill rig *Transocean Legend* in position 14° 21'.75 S 121° 39'.55 E. 2.5M clearance requested.
 085 Drill rig *Ocean Shield* in position 14° 29'.68 S 128° 30'.58 E. 2.5M clearance requested.
 086 Special purpose vessel *Geowave Voyager* conducting seismic survey towing ten 5M cable in area 18° 50'.00 S to 19° 55'.00 S and 114° 30'.00 E to 115° 50'.00 E. 6M clearance requested.
 087 Cancelled.
 088 Drill rig *Ensco 7500* in position 19° 52'.00 S 114° 31'.00 E. 2.5M clearance requested.

NAVAREA X WARNINGS

- 007 Cancelled.

Navigational warnings in force as at 090001UTC APR 09.**Auscoast**

044 048 056 058 060 061 066 067 068 072 076 077 078 080 083 084 085 086 088

Navarea X

Nil.

Summary of mobile drilling rigs as at 090001UTC APR 09.

<i>Name</i>	<i>Position</i>
Transocean Legend	14° 21'.75 S 121° 39'.55 E
Ocean Shield	14° 29'.68 S 128° 30'.58 E
West Atlas	12° 40'.30 S 124° 32'.40 E
Songa Venus	13° 40'.40 S 123° 20'.61 E
Sedco 703	13° 37'.00 S 122° 18'.00 E
Ensco 7500	19° 52'.00 S 114° 31'.00 E
Stena Clyde	20° 00'.36 S 115° 09'.06 E
Nan Hai 6	21° 28'.31 S 113° 59'.10 E
Ocean Epoch	21° 31'.38 S 114° 06'.59 E
Songa Mercur	21° 31'.70 S 114° 05'.01 E
Atwood Eagle	19° 40'.10 S 112° 47'.45 E

NAVAREA XIV WARNINGS

- 006 Cancelled.
 007 Cancelled.
 008 Cancelled.
 009 Cancelled.
 010 Cancelled.
 011 South Pacific Ocean. Samoa Islands. Special purpose vessel *Ile De Re* conducting cable laying operations in area 13° 20'.0 S to 19° 30'.0 S and 168° 45'.0 W to 172° 00'.0 W. 1M clearance requested.
 012 South Pacific Ocean. Tonga. Volcanic activity reported on 16 March 2009 in vicinity of Hunga Tonga (20° 32'.0 S 175° 23'.0 W). Large ash cloud visible at high altitude, no floating pumice reported.
 013 South Pacific Ocean. Hazardous operations space debris 0115 to 0345 UTC daily 5 to 15 April 2009 in area 20° 20'.0 S to 23° 15'.0 S and 112° 00'.0 W to 127° 00'.0 W.
 014 South Pacific. French Polynesia. Pearl farms in atolls in area 14° 00'.0 S to 24° 00'.0 S and 133° 00'.0 W to 153° 00'.0 W may constitute a danger to navigation. All information on precise position of pearl farms can be obtained from pearl center service, Tahiti, at +689 50 00 13 giving 48 hours notice. Inquire regularly before passage as pearl farms are susceptible to modification at short notice. List of atolls Mopelia, Tahaa, Raiatea, Huahine, Tikehau, Rangiroa, Ahe, Manihi, Takapoto, Takaroa, Arutua, Kaukura, Apataki, Toau, Fakarava, Faaite, Aratika, Kauehi, Raraka, Katiu, Makemo, Taenga, Raroia, Takume, Marokau, Nengonengo, Hao, Amanu, Marutea Sud, Gambier (Mangareva, Akamaru, Aukena).

Navarea XIV warnings in force as at 090001UTC APR 09.

- 2008** 085
2009 002 011 012 013 014

To accompany Australian Notice to Mariners 414/2009

AUSTRALIAN MARITIME JURISDICTION
(AMJ)

The territorial sea baseline and the outer limit of Australian maritime zones shown on this chart are sourced from the Geoscience Australia product Australian Maritime Boundaries (AMB). For Australian maritime boundary information see Australia Seafarers Handbook AHP 20.

Note for chart Aus 722

To accompany Australian Notice to Mariners 414/2009

AUSTRALIAN MARITIME JURISDICTION
(AMJ)

The territorial sea baseline and the outer limit of Australian maritime zones shown on this chart are sourced from the Geoscience Australia product Australian Maritime Boundaries (AMB). For Australian maritime boundary information see Australia Seafarers Handbook AHP 20.

Note for chart Aus 724

To accompany Australian Notice to Mariners 414/2009

AUSTRALIAN MARITIME JURISDICTION
(AMJ)

The territorial sea baseline and the outer limit of Australian maritime zones shown on this chart are sourced from the Geoscience Australia product Australian Maritime Boundaries (AMB). For Australian maritime boundary information see Australia Seafarers Handbook AHP 20.

Note for chart AX 72722

To accompany Australian Notice to Mariners 419/2009

AUSTRALIAN MARITIME JURISDICTION
(AMJ)

The territorial sea baseline and the outer limit of Australian maritime zones shown on this chart are sourced from the Geoscience Australia product Australian Maritime Boundaries (AMB). For Australian maritime boundary information see Australia Seafarers Handbook AHP 20.

Note for chart Aus 732

To accompany Australian Notice to Mariners 419/2009

AUSTRALIAN MARITIME JURISDICTION
(AMJ)

The territorial sea baseline and the outer limit of Australian maritime zones shown on this chart are sourced from the Geoscience Australia product Australian Maritime Boundaries (AMB). For Australian maritime boundary information see Australia Seafarers Handbook AHP 20.

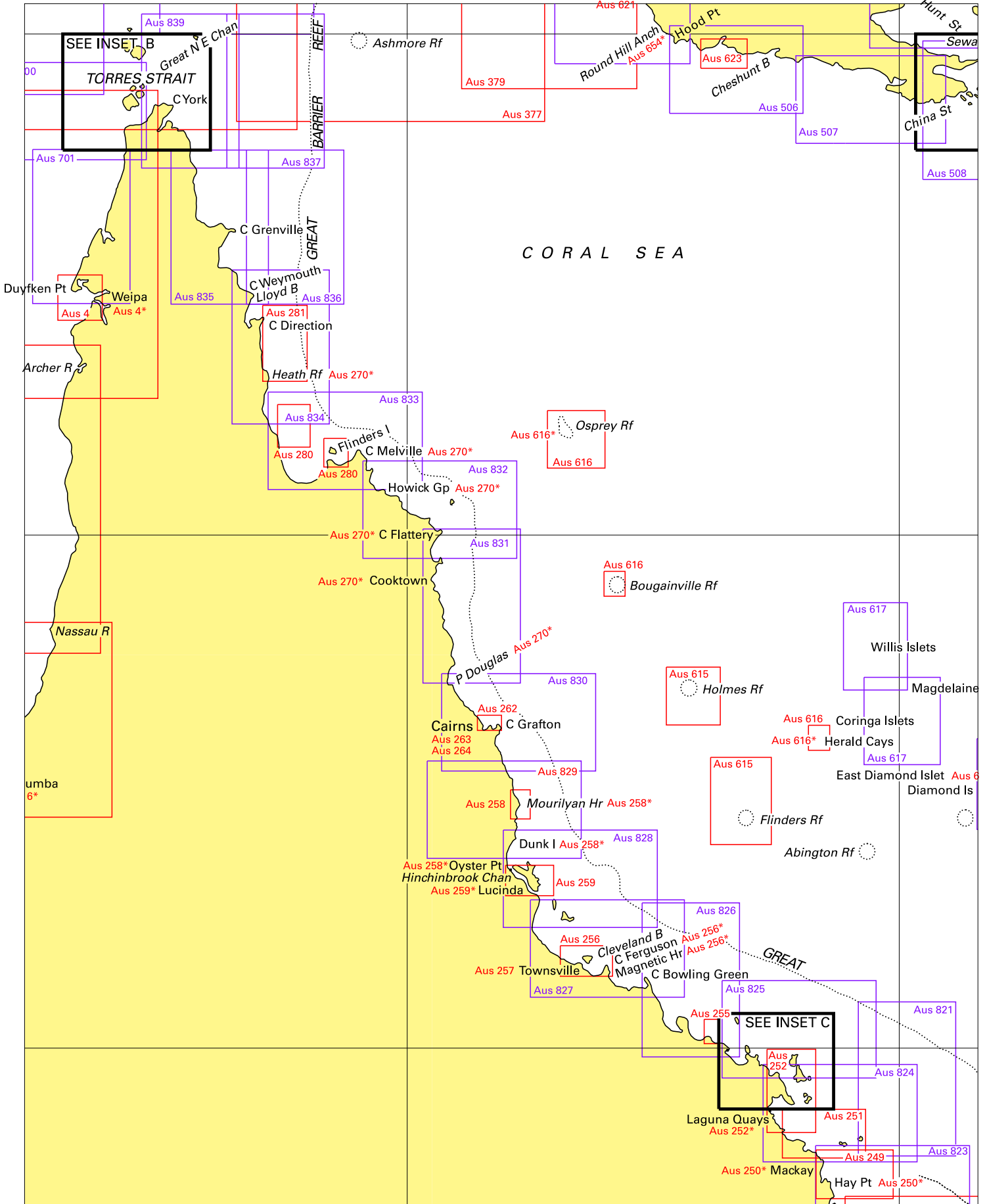
Note for chart Aus 733

To accompany Australian Notice to Mariners 424/2009

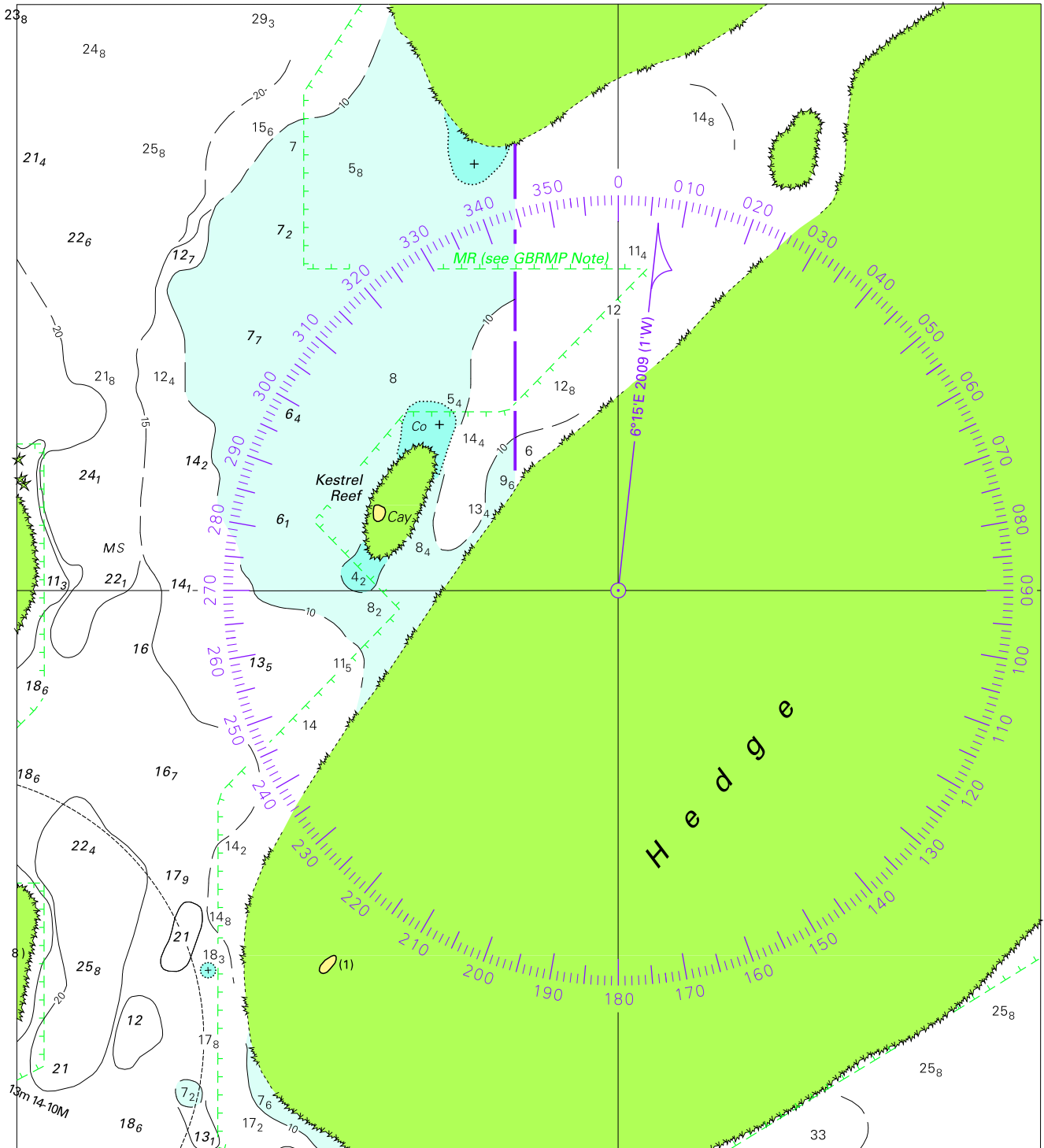
ENVIRONMENTALLY SENSITIVE SEA
AREA (ESSA)

Areas of this chart are Environmentally Sensitive Sea Areas (ESSA). Areas within this marine protected area have restrictions on access and activities. See Australian Seafarers Handbook AHP 20.

Note for chart Aus 767



To accompany Australian Notice to Mariners 408/2009

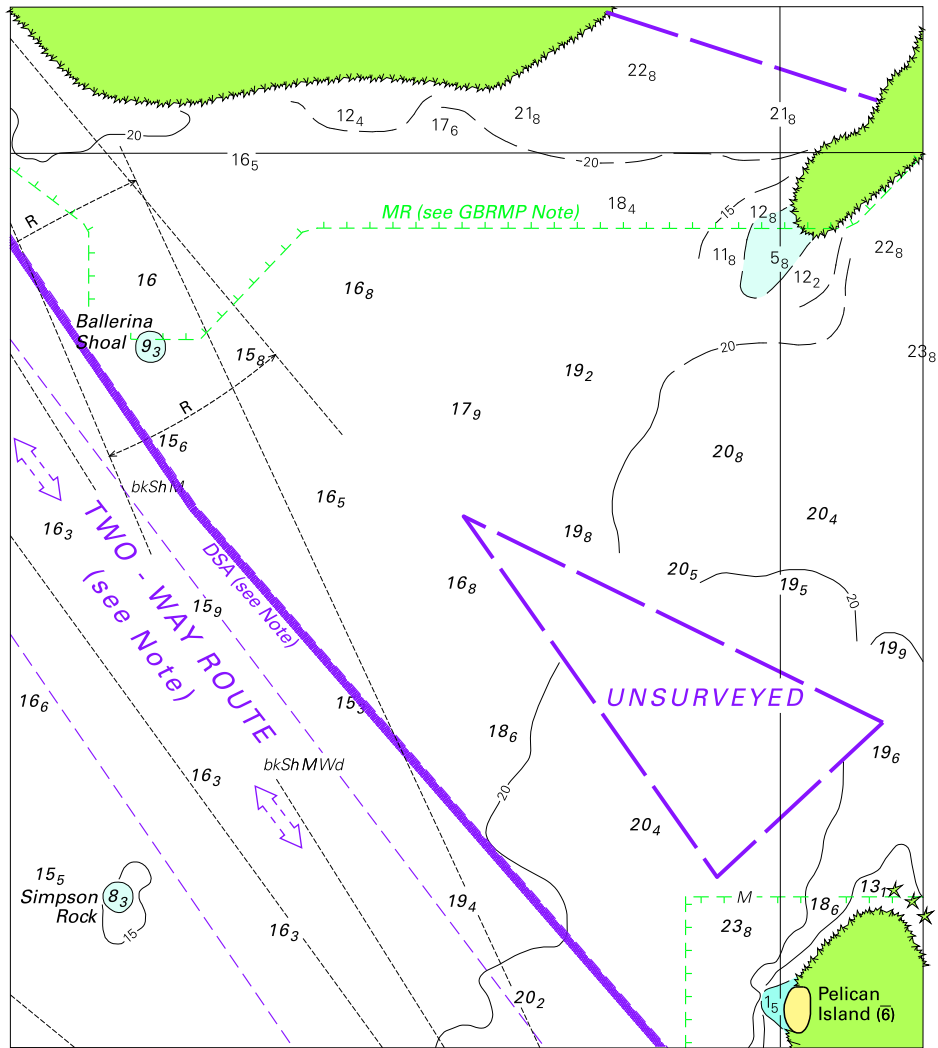


Block A for chart Aus 280

© Commonwealth of Australia 2009

(172 x 192.3mm)

To accompany Australian Notice to Mariners 408/2009

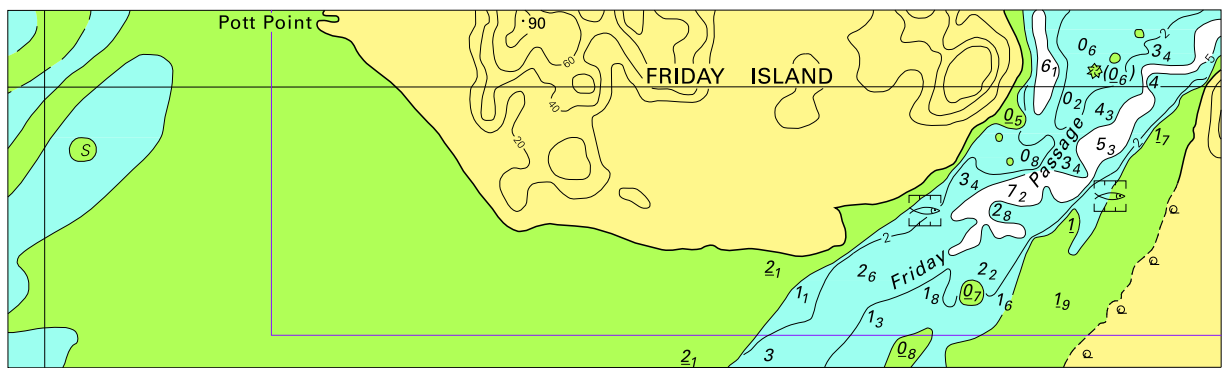


Block B for chart Aus 280

© Commonwealth of Australia 2009

(120.7 x 137.7mm)

To accompany Australian Notice to Mariners 411/2009

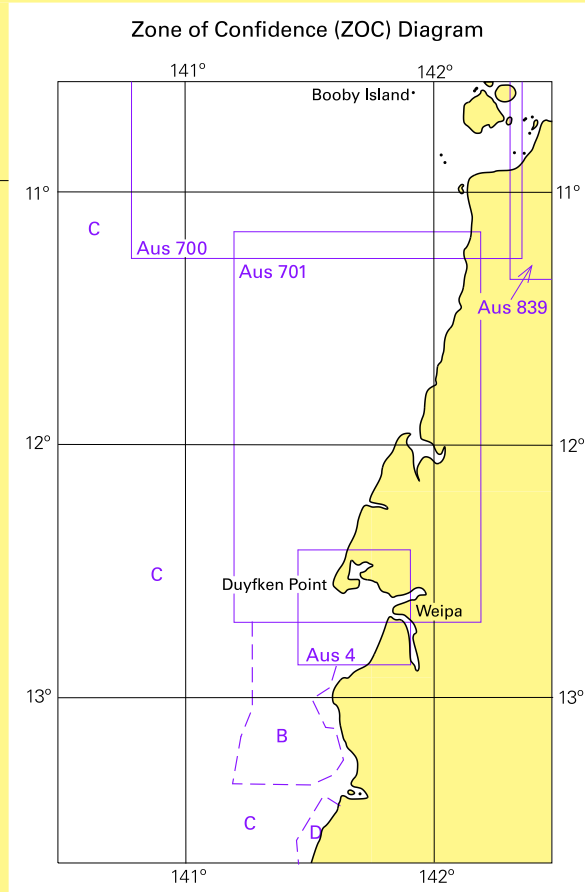


Block for chart Aus 293

© Commonwealth of Australia 2009

(160.5 x 47.3mm)

To accompany Australian Notice to Mariners 412/2009



ZOC CATEGORIES

(For details see Australian Seafarers Handbook, AHP 20)

ZOC	POSITION ACCURACY	DEPTH ACCURACY	SEAFLOOR COVERAGE
A1	±5m	=0.50m + 1% d	All significant seafloor features detected
A2	±20m	=1.00m + 2% d	All significant seafloor features detected
B	±50m	=1.00m + 2% d	Uncharted features hazardous to surface navigation are not expected but may exist
C	±500m	=2.00m + 5% d	Depth anomalies may be expected
D	Worse than ZOC C	Worse than ZOC C	Large depth anomalies may be expected
U	Unassessed -The quality of the bathymetric data has yet to be assessed		

To accompany Australian Notice to Mariners 427/2009

**CUMULATIVE LIST OF AUSTRALIAN
NOTICES TO MARINERS
APRIL 2009**

Prepared by the Australian Hydrographic Service
by direction COMMODORE R. NAIRN RAN
Hydrographer of Australia

CUMULATIVE LIST OF AUSTRALIAN NOTICES TO MARINERS

General Information

1. This list identifies, by its chart number and current edition, each Australian (Aus) navigational chart of the Australian Charting Area (see *Australian Notice to Mariners No 1 of 2009 and Australian Seafarers Handbook AHP20*).
2. Unless a Chart Correction Log (NP 133) is being used to perform a similar function, then, until a new edition is published in October 2009, this list should be corrected up to date from the information given in Section I of successive Editions of Australian Notices to Mariners by:
 - (a) adding new charts, each with its date of publication;
 - (b) amending the dates and deleting the listed Notices to Mariners for charts of which new editions have been published;
 - (c) deleting all reference to charts that have been withdrawn; and
 - (d) adding the numbers of the appropriate Notices to Mariners against each relevant chart.
3. All Notices to Mariners that have affected each chart during the last two years are listed against it. If the chart has not been affected by a notice during that period then the most recent notice, if any, is shown.

The Current Edition of a Chart

4. When a new chart is first published the date of publication is shown in the publication note that appears below the centre of the southern outer border; this date remains unchanged throughout successive new editions. The date of each new edition is printed on the chart a few centimetres to the right of the publication note.
5. A new edition on being published and issued as notified by a Notice to Mariners becomes the current edition and the previous edition is superseded. When a chart is withdrawn as directed by a Notice to Mariners there ceases to be any current edition of it. Withdrawn charts and superseded editions should not be used for navigation, nor should current editions that have not been corrected for relevant Notices to Mariners.
6. Users of this cumulative list are reminded that the authoritative source for information concerning current editions of charts and the corrections that affect them in the Australian Area are Editions of Australian Notices to Mariners.

<i>Chart Number</i>	<i>Current Edition</i>	<i>Notices to Mariners affecting the chart from Edition 7 dated 13 Apr 2007</i>
Aus 4	Feb 2009	
Aus 6	May 2000	2007-641-679-726-2008-635-2009-149-
Aus 13	May 2002	2007-133-
Aus 14	Oct 1996	2009-244-
Aus 15	Jun 1995	2007-1115-2009-245-
Aus 16	Aug 2001	2006-261-
Aus 17	Feb 2001	2007-40-
Aus 18	Nov 1995	2007-430-2008-1013-2009-300-
Aus 20	Oct 1975	2008-333-1075-
Aus 21	Jan 1992	2009-301-
Aus 22	Nov 2008	
Aus 23	Feb 2009	
Aus 24	Nov 2007	2007-1117-2008-237-737-778-779-906-2009-247-
Aus 26	Aug 2003	2007-312-313-474-475-561-762-1060-1116-2008-46-238-289-334-737-848-906-908-1014-2009-247-
Aus 27	May 2008	2008-778-907-1014-
Aus 28	May 2008	2008-778-907-
Aus 29	Jan 1997	2008-290-637-1015-1124-
Aus 32	Feb 2004	2008-1076-1227-2009-197-248-366-
Aus 37	Jun 1950	2003-599-
Aus 40	Jan 2009	
Aus 41	Oct 2008	2009-57-
Aus 43	Nov 2008	
Aus 44	May 2003	2008-783-
Aus 45	Mar 1999	2007-871-
Aus 50	Aug 1973	2007-764-960-1012-1013-1063-2009-249-
Aus 52	Jan 1988	2007-432-602-961-2008-911-959-1017-1179-1180-1181-1230-
Aus 53	Aug 1987	2007-524-961-2008-698-958-1016-1017-1179-1180-
Aus 54	Nov 2008	
Aus 55	May 2002	2008-239-240-581-789-852-1232-2009-153-
Aus 56	May 2003	2008-239-240-581-789-852-1231-1232-2009-153-
Aus 57	Feb 2009	2009-420-
Aus 58	Feb 2009	2009-420-
Aus 59	Nov 1987	2007-479-564-565-728-1119-2008-190-192-1018-1019-1233-2009-58-250-368-
Aus 61	Oct 2000	2006-573-
Aus 62	Aug 2004	2008-960-
Aus 63	Jan 2009	
Aus 64	Feb 2002	2007-433-765-2008-1234-2009-251-
Aus 72	Apr 1956	2005-678-
Aus 73	Nov 2008	2009-198-
Aus 74	Jan 2009	
Aus 81	Jan 2005	2007-525-604-2008-962-1284-2009-422-
Aus 105	May 1985	2008-1022-2009-252-
Aus 109	Nov 2003	2007-916-2009-310-
Aus 110	Jan 1983	2008-1026-2009-156-310-
Aus 111	Mar 1997	2008-155-242-584-
Aus 112	Jul 2002	2007-394-2008-49-194-241-964-1131-1185-1237-1285-2009-64-65-199-
Aus 113	Jan 2009	2009-370-
Aus 114	Nov 2003	2007-357-2008-796-1185-
Aus 115	Jan 1998	2008-190-195-243-438-491-1024-1238-1286-2009-66-254-
Aus 116	Jun 1993	2008-699-1132-2009-308-
Aus 117	Sep 2004	2007-356-357-2008-49-155-292-293-1131-1185-2009-155-
Aus 118	Jun 1983	2008-378-741-797-1026-
Aus 119	Apr 2004	2007-822-917-2009-371-
Aus 120	Jan 1976	2007-566-2008-244-2009-67-
Aus 121	Nov 1978	2007-567-2008-196-1186-
Aus 122	Oct 2008	2009-201-
Aus 125	Feb 1994	2007-1121-2008-299-337-1080-1081-
Aus 127	Mar 2001	2008-644-
Aus 130	Jun 2008	2008-919-920-1079-2009-200-
Aus 134	Nov 2002	2007-526-2008-100-
Aus 136	Apr 2000	2007-605-874-1120-2008-50-2009-68-
Aus 137	May 2008	2008-1288-2009-159-312-423-
Aus 138	Nov 2007	2008-296-297-494-535-
Aus 139	Oct 2003	2007-918-2008-102-493-534-588-

Aus 140	Mar 2001	2007-963-2008-156-380-
Aus 141	Mar 2001	2008-1244-
Aus 143	Apr 2007	2007-647-687-689-690-730-827-1066-1067-2008-53-103-383-385-443-444-496-922-969-2009-162-426-
Aus 144	Sep 2007	2007-1066-2008-103-159-384-1085-2009-70-162-425-
Aus 148	May 2002	2008-706-743-2009-314-
Aus 150	Mar 1995	2007-400-482-608-1126-2008-387-445-539-593-862-971-2009-72-
Aus 151	Feb 1994	2007-400-481-608-609-2008-445-540-593-1140-2009-72-204-
Aus 152	Jun 1992	2007-481-609-2008-742-2009-204-
Aus 153	Aug 2008	2009-71-
Aus 154	Feb 2008	2008-497-861-1032-2009-162-
Aus 155	Apr 2007	2007-606-1025-2008-103-385-497-1139-2009-162-426-
Aus 157	Mar 2009	
Aus 158	Apr 2007	2007-647-685-686-688-689-2008-52-53-103-159-384-386-443-496-922-1085-2009-70-162-425-
Aus 163	Sep 1993	2008-859-1084-
Aus 164	Jun 1999	2007-1065-2008-1084-
Aus 167	Mar 1997	2007-923-2008-51-703-2009-374-
Aus 168	Oct 2002	2007-923-924-1123-2008-338-704-1030-
Aus 169	Jan 2005	2007-398-399-826-964-2008-245-701-2009-203-
Aus 170	Oct 2006	2007-921-2008-381-442-536-801-968-
Aus 171	Jan 2006	2007-440-568-569-920-1023-2008-158-198-589-590-701-798-1289-2009-69-313-
Aus 172	Sep 2005	2007-1122-2008-301-441-589-799-1188-
Aus 173	Aug 2008	2009-69-
Aus 174	Jun 2008	2008-1083-1242-
Aus 175	Mar 2008	2008-1136-
Aus 176	Mar 2008	2008-858-921-2009-161-
Aus 177	Aug 2001	2008-300-2009-160-
Aus 178	Jun 2002	2008-339-537-
Aus 179	Jun 2002	2007-527-
Aus 181	Aug 1983	2007-926-966-2008-645-744-973-2009-74-75-163-206-
Aus 182	Jan 1998	2007-380-2008-594-645-744-973-1141-1291-2009-207-
Aus 191	Aug 2004	2007-846-847-946-1046-2008-178-570-571-999-2009-234-352-353-
Aus 192	Nov 2003	2007-381-750-2008-899-1062-2009-132-
Aus 193	May 2004	2007-714-2008-321-322-1062-1063-1064-1216-1217-
Aus 194	Sep 2007	2007-1048-1098-1099-2008-139-140-141-179-366-1218-2009-31-
Aus 195	Nov 2008	
Aus 197	Aug 2001	2007-552-1049-1101-2008-87-180-367-621-770-1065-
Aus 198	Jun 2005	2007-303-752-802-803-901-2008-324-367-950-1000-2009-134-235-236-404-
Aus 199	Aug 1996	2007-303-802-803-1102-2008-367-1000-2009-236-404-
Aus 200	Dec 1992	2007-304-804-805-850-1050-2008-86-428-429-519-683-684-838-900-951-1168-1265-2009-33-
Aus 201	Jul 2001	2007-304-421-1050-2008-86-1113-
Aus 202	Jul 2001	2007-341-805-2008-428-519-683-951-1113-
Aus 203	Jul 1994	2007-462-463-551-805-850-2008-429-838-951-1265-2009-135-
Aus 204	Mar 2002	2007-635-948-2008-621-685-2009-282-283-
Aus 207	Jul 2000	2008-146-181-480-481-621-
Aus 208	Oct 1999	2007-305-1003-2008-29-145-480-621-1114-1115-1219-
Aus 209	Apr 2001	2007-422-2008-182-2009-36-37-136-237-284-354-
Aus 215	Nov 2002	2007-753-947-1103-
Aus 216	Nov 2001	2007-635-2009-283-
Aus 217	Feb 2004	2009-282-
Aus 219	Aug 2001	2007-382-423-949-2008-686-
Aus 220	Oct 1992	2007-424-465-507-508-554-670-671-672-2008-1172-1173-
Aus 221	Mar 2009	
Aus 235	Jan 2009	
Aus 236	Nov 2006	2007-467-851-1051-2008-280-368-521-622-687-1117-1174-1266-2009-138-238-286-
Aus 237	Feb 2000	2007-342-555-1105-2008-89-229-280-369-430-772-1002-1003-1174-
Aus 238	Aug 2006	2007-555-1004-2008-773-1220-2009-239-
Aus 241	Jun 1977	2007-852-2008-282-1004-
Aus 242	Jan 2006	2009-41-

Aus 243	Jan 2006	2009-40-
Aus 244	Apr 2007	2007-673-716-717-807-2008-30-326-370-623-725-1175-1267-2009-139-
Aus 245	Apr 2007	2007-673-715-716-854-902-1052-2008-30-326-370-482-623-725-953-1066-1175-2009-184-287-357-
Aus 246	Jan 2006	2007-306-716-902-2008-1175-2009-357-
Aus 247	May 2006	2007-509-556-2008-184-573-626-726-727-728-774-1118-1268-2009-183-185-
Aus 248	Sep 2004	2007-425-
Aus 249	Jun 2007	2007-755-808-809-904-905-906-2008-327-574-1068-1221-2009-140-288-
Aus 250	Jun 2007	2007-810-903-904-952-2008-1005-1221-2009-42-140-288-
Aus 251	May 2005	2007-559-755-905-906-2008-327-432-2009-289-
Aus 252	May 2005	2007-511-1053-2008-1069-
Aus 253	May 2005	2007-511-1053-2008-1069-2009-290-
Aus 254	Jun 2005	2007-511-1054-
Aus 255	Jul 2005	2009-187-
Aus 256	May 2005	2008-90-433-575-2009-141-241-292-
Aus 257	Nov 2008	2009-188-241-
Aus 258	Jan 2006	2008-91-484-
Aus 259	Apr 2006	2007-636-637-907-2009-293-
Aus 260	May 2005	2007-425-718-2008-1269-
Aus 261	May 2005	2007-425-
Aus 262	Jul 2005	2007-908-
Aus 263	May 2001	2007-1055-2009-43-
Aus 264	Oct 2001	2007-514-1055-2009-43-
Aus 268	Jun 2005	2007-512-
Aus 270	May 2005	2007-515-2008-147-523-1270-
Aus 280	Jun 2005	2009-408-
Aus 281	Jul 2004	2008-148-
Aus 289	Mar 2003	2007-38-
Aus 292	Jun 2005	2007-388-472-517-2008-186-371-2009-51-147-363-
Aus 293	Jun 1988	2007-388-472-516-517-721-858-2008-149-186-729-2009-51-147-148-411-
Aus 294	Nov 1988	2007-761-2008-633-693-846-2009-363-
Aus 296	Nov 1988	2007-517-860-1114-2008-186-236-1178-1276-2009-51-298-
Aus 299	Feb 2009	
Aus 301	Apr 1990	2007-393-2008-436-2009-363-412-
Aus 302	Jun 1992	2008-634-
Aus 303	May 1999	2008-635-2009-149-150-
Aus 304	May 2000	2007-191-
Aus 305	Jun 1997	2006-512-
Aus 306	May 2008	2008-847-905-
Aus 308	Sep 2003	2007-351-2008-848-956-1013-2009-299-
Aus 309	Jun 2008	2008-848-956-957-1226-1277-2009-53-151-196-364-
Aus 310	Apr 2008	2009-152-364-
Aus 311	May 2008	2008-781-1123-
Aus 312	Apr 2008	2009-365-
Aus 313	May 2008	
Aus 314	May 2008	2008-782-785-1228-1279-1280-
Aus 315	May 2008	2008-780-
Aus 316	Oct 1990	2008-695-1278-
Aus 317	May 2008	2008-784-785-
Aus 318	Nov 1989	2007-864-2008-638-788-850-
Aus 319	May 2008	2008-738-783-850-1228-
Aus 320	Dec 1989	2007-866-867-868-958-2008-47-488-533-851-2009-304-
Aus 321	May 2008	2008-784-1229-1280-1281-2009-415-
Aus 322	May 2008	2009-55-
Aus 323	Nov 1995	2007-869-2008-697-1128-
Aus 324	Jan 1975	2007-1012-2009-249-
Aus 325	Nov 1966	2006-569-
Aus 326	Jun 1986	2008-190-1129-2009-367-
Aus 327	Aug 1967	2007-354-2008-48-190-193-791-853-960-1183-1282-
Aus 328	Dec 1985	2007-433-2008-190-740-792-793-794-960-1077-1130-1183-2009-61-306-421-
Aus 329	May 1967	2007-766-872-2008-583-740-914-2009-61-
Aus 330	Oct 1968	2007-434-2009-62-

Aus 331	Sep 1968	2007-434-644-2008-99-2009-62-
Aus 332	May 1988	2007-435-436-603-2008-190-855-963-2009-422-
Aus 333	May 1990	2007-436-2008-49-915-963-2009-422-
Aus 334	Oct 2000	2008-190-194-377-1286-2009-64-253-
Aus 335	Dec 1988	2008-916-965-1286-1287-2009-200-
Aus 336	Aug 1984	2008-190-965-1027-1287-2009-200-
Aus 337	Mar 2000	2008-190-
Aus 341	Jan 1997	2008-918-
Aus 342	Mar 1997	2009-372-
Aus 343	Jun 1990	2008-245-379-700-1240-2009-200-202-373-
Aus 345	Mar 1992	2007-314-2008-245-298-337-439-700-919-1240-2009-202-
Aus 346	Apr 1992	2007-314-2008-245-379-1240-
Aus 347	Aug 2001	2007-314-2008-245-337-439-644-1134-
Aus 348	Nov 2001	2007-397-1022-2008-644-1082-
Aus 349	Jul 1975	2007-645-2009-255-
Aus 357A	Sep 1983	2007-380-442-967-2008-245-707-1189-1264-2009-73-74-
Aus 361	Oct 2000	2007-506-806-1049-2008-143-278-367-621-770-1065-1110-1111-1112-1264-
Aus 363	Jan 1992	2008-1112-1171-2009-38-
Aus 364	Mar 1992	2007-1051-2008-245-
Aus 365	Sep 1967	2007-951-2008-281-572-2009-405-
Aus 366	Jun 1991	2007-306-468-589-1052-2008-183-184-185-573-626-688-2009-183-
Aus 367	May 2006	2007-425-2008-185-431-1119-1269-2009-183-
Aus 376	Mar 2006	2007-308-309-310-344-393-426-472-517-591-675-860-909-953-2008-232-485-901-1073-1120-1178-1224-1276-2009-50-143-295-363-409-
Aus 377	Jun 2006	2007-307-308-309-310-345-675-953-2008-232-577-902-2009-295-
Aus 378	Mar 2008	2008-901-902-
Aus 379	Jan 2008	2008-283-2009-191-360-
Aus 383	Nov 1995	2007-460-2008-150-526-630-2009-296-
Aus 386	Mar 2008	2008-904-2009-361-
Aus 387	Oct 2007	2008-42-43-152-235-285-332-2009-48-
Aus 388	Nov 1990	2007-601-1112-2008-43-286-331-332-580-1072-1275-2009-49-
Aus 389	Mar 2008	
Aus 391	Feb 2008	2008-736-777-955-
Aus 392	Feb 2008	2008-530-690-2009-410-
Aus 393	May 2008	
Aus 396	Feb 2008	2009-47-361-
Aus 397	Feb 2008	2008-579-732-
Aus 398	Feb 2008	2008-690-735-844-
Aus 399	Jul 1999	2008-39-94-96-330-435-528-734-2009-362-
Aus 400	Aug 2003	2007-1062-
Aus 402	Sep 1965	2006-1085-
Aus 414	Aug 1969	2007-476-727-819-821-2008-335-336-910-1125-2009-303-
Aus 415	Jun 2008	2008-853-913-961-1127-2009-59-421-
Aus 416	Mar 1992	2007-435-436-603-766-2008-99-190-913-1283-2009-421-422-
Aus 417	Sep 2000	2007-435-436-603-2008-377-2009-422-
Aus 422	Jan 2005	2007-442-645-646-876-965-2008-382-442-495-800-967-1029-1135-1264-2009-74-205-375-
Aus 423	Oct 2000	2007-442-1049-2008-143-245-321-621-770-1062-1112-1166-1264-
Aus 424	Oct 2000	2007-1049-1051-2008-143-245-281-325-621-1112-1116-1171-
Aus 426	Feb 1997	2007-468-470-510-589-754-756-855-1052-2008-231-327-1269-
Aus 442	Jan 1958	2008-847-2009-245-
Aus 444	May 1992	2007-314-2008-298-337-379-700-2009-202-
Aus 449	Sep 1993	2006-1085-
Aus 450	Nov 1991	2003-359-
Aus 451	Jan 1992	2005-765-
Aus 452	Nov 2002	2005-765-
Aus 454	Oct 1998	2005-277-
Aus 462	Nov 1992	2007-859-2008-97-151-188-331-531-690-691-692-2009-49-194-
Aus 487	Jan 2005	2007-608-645-2008-382-967-1290-2009-73-74-205-375-
Aus 502	Dec 1992	2008-32-628-2009-44-

Aus 505	Feb 2007	2007-390-593-756-812-910-1007-2008-629-1273-2009-144-191-
Aus 506	Aug 2007	2007-1009-2008-629-1273-
Aus 507	Mar 2007	2007-505-518-954-2008-233-524-2009-360-
Aus 508	Mar 2008	2008-1177-
Aus 509	Oct 2007	2008-150-329-524-
Aus 510	Feb 2007	2008-33-150-
Aus 511	Feb 2007	2008-150-
Aus 512	Nov 2007	2008-525-689-1222-1274-
Aus 513	Jan 2007	2007-460-520-2008-33-150-329-524-
Aus 514	Jun 1995	2007-460-2008-527-631-1223-
Aus 515	Mar 2007	2007-520-2008-234-
Aus 516	Jan 2007	2007-460-723-2008-92-731-
Aus 517	Jan 2007	2007-347-427-460-723-
Aus 518	Feb 2002	2007-519-676-955-2008-33-524-
Aus 519	Jan 2003	2007-595-955-2008-34-731-
Aus 520	Jan 2003	2007-595-2008-34-578-841-
Aus 521	Jan 2003	2007-597-639-2008-35-730-
Aus 522	Jan 2003	2007-597-
Aus 523	Dec 1991	2008-36-2009-45-
Aus 539	Oct 1999	2007-302-724-2008-845-
Aus 543	Nov 2007	2009-410-
Aus 545	Feb 2007	2007-380-598-760-816-911-1109-2008-733-
Aus 546	Oct 2007	2008-187-
Aus 547	Oct 2007	2009-46-47-
Aus 548	Oct 2007	
Aus 554	Feb 2007	2007-815-816-2008-38-732-733-843-2009-146-193-
Aus 597	Oct 2006	2009-158-
Aus 600	Feb 2007	2008-440-
Aus 601	Apr 1999	2005-809-
Aus 602	Mar 2003	2005-809-
Aus 603	Nov 2002	2005-548-
Aus 604	Sep 2006	
Aus 605	Oct 2006	2007-30-
Aus 606	Jun 1991	2009-305-
Aus 607	Jun 1991	2009-305-
Aus 608	Jul 2007	2007-1062-
Aus 609	Jun 1995	2009-356-
Aus 610	Nov 2000	2009-137-
Aus 611	Oct 1998	2007-180-
Aus 612	Mar 1996	2007-180-
Aus 613	Mar 2001	2005-809-
Aus 614	Feb 1994	2007-180-
Aus 615	Mar 2001	2005-809-
Aus 616	Jun 2000	2007-180-
Aus 617	Mar 2001	2008-954-2009-407-
Aus 618	May 1999	2006-114-
Aus 621	Mar 2005	2007-389-593-756-812-1007-2008-486-2009-144-145-190-
Aus 622	Nov 2004	2007-346-756-
Aus 623	May 2007	2007-1008-1106-
Aus 624	Apr 2007	2007-518-
Aus 625	Jun 2007	
Aus 628	Jul 2000	2008-329-
Aus 631	May 1983	2002-123-
Aus 644	Jan 2003	2007-639-
Aus 645	Dec 2008	
Aus 646	Sep 2001	2007-521-560-640-677-2008-1071-
Aus 651	Jan 2008	
Aus 652	Feb 2008	
Aus 654	Oct 2005	2007-594-2008-36-689-776-777-
Aus 662	Aug 2007	2007-1110-2008-776-
Aus 663	Mar 1984	2002-268-
Aus 665	Jun 2006	
Aus 666	Aug 2007	2008-529-1070-2009-297-
Aus 668	Sep 1985	2007-815-
Aus 669	Mar 2009	
Aus 672	Feb 2009	
Aus 673	Feb 2007	2007-340-349-2008-285-903-
Aus 674	Jan 1975	2007-669-2009-46-47-
Aus 676	Sep 1979	2007-340-817-1107-1108-2008-37-40-

Aus 677	Jun 2007	2009-46-47-
Aus 679	Feb 1978	2006-795-
Aus 680	Jan 1997	2007-759-2008-733-2009-192-
Aus 683	Jul 1999	2008-93-94-
Aus 684	Jul 1999	2008-39-
Aus 700	Jul 1994	2007-311-517-860-1114-2008-236-1008-1178-1224-1276-2009-363-
Aus 701	Feb 2009	
Aus 710	May 1996	2005-851-
Aus 715	Sep 1994	2007-429-861-862-2008-694-847-2009-245-
Aus 716	Mar 2009	
Aus 717	Oct 2003	2005-851-
Aus 720	Aug 2001	2007-351-
Aus 721	May 2003	2007-351-522-2008-1013-
Aus 722	Jun 2003	2007-352-561-1118-2008-737-848-906-956-957-2009-53-413-414-
Aus 724	Jun 2003	2008-1278-2009-414-
Aus 725	Mar 2003	2005-851-
Aus 726	Apr 2003	2005-190-
Aus 727	Mar 2003	2007-864-865-2008-532-
Aus 728	Mar 2003	2007-865-866-2008-532-850-
Aus 729	Feb 2003	2007-866-
Aus 730	Feb 2003	2007-867-868-958-2008-47-437-487-851-
Aus 732	Apr 2003	2007-563-869-959-2008-739-2009-418-419-
Aus 733	Jan 2003	2007-563-871-959-2008-739-2009-418-419-
Aus 739	Jun 1986	2007-524-2008-190-698-1230-
Aus 740	Jun 1986	2007-524-2008-190-291-372-489-698-789-1017-1230-1232-2009-153-
Aus 741	Dec 1985	2007-354-1119-2008-191-291-581-789-1017-1182-1232-1282-2009-153-
Aus 742	Apr 2005	2007-1119-2008-190-960-1183-
Aus 743	Oct 1993	2007-433-765-2008-190-582-960-1077-1183-2009-60-306-
Aus 744	Sep 1998	2007-523-681-1014-2008-374-583-740-793-2009-61-154-
Aus 745	May 1985	2008-795-1021-
Aus 747	Jul 2000	2007-355-434-767-1015-2008-190-2009-63-
Aus 748	Mar 1994	2007-644-1016-2008-640-2009-369-
Aus 749	May 1993	2007-644-682-2008-190-2009-307-369-
Aus 751	Nov 1986	2007-435-436-2008-49-490-641-1184-2009-422-
Aus 752	Jun 1985	2007-436-2008-375-1184-
Aus 753	Jun 1988	2008-49-376-1022-
Aus 754	Jul 2002	2007-394-2008-194-377-2009-64-253-
Aus 755	Jan 2009	
Aus 756	Jan 2009	
Aus 757	Jan 2009	
Aus 758	Jan 2009	2009-309-
Aus 759	Jan 2009	
Aus 762	Jan 2009	2009-371-
Aus 763	Jan 2009	
Aus 766	Apr 2007	2007-825-921-922-965-2008-800-1243-2009-424-
Aus 767	Jan 2007	2007-359-441-550-2008-303-1243-2009-424-
Aus 776	Nov 2002	2008-101-700-
Aus 777	Feb 2007	2007-358-396-437-823-1017-1020-2008-101-245-
Aus 778	Feb 2007	2007-396-438-439-605-683-768-873-874-1018-1019-2008-245-
Aus 780	Oct 1967	2007-314-684-918-962-2008-245-295-298-299-337-439-919-
Aus 781	Jul 1980	2007-684-919-962-1064-2008-295-298-493-643-919-
Aus 786	Mar 1965	2007-963-2008-380-
Aus 788	Jun 1996	2007-730-827-1066-2008-383-538-591-1244-2009-162-
Aus 789	May 2003	2007-646-2008-966-
Aus 790	Nov 2004	2008-339-
Aus 791	Nov 2004	2008-967-
Aus 792	Jul 2008	2008-967-
Aus 793	Jul 2008	2008-1029-1187-
Aus 794	Aug 2008	2008-1241-
Aus 795	Aug 2008	2009-69-
Aus 796	Aug 2008	2009-69-
Aus 797	Jun 2008	2008-1135-
Aus 798	Feb 2003	2007-527-

Aus 799	Jun 1996	2007-1065-2008-382-537-702-1084-
Aus 800	Aug 2002	2007-527-2008-304-
Aus 801	May 1996	2007-1127-2008-541-592-972-1290-2009-205-375-
Aus 802	Dec 1975	2007-966-2008-705-972-1290-2009-73-74-205-314-375-
Aus 805	Jun 2005	2007-967-2009-164-315-
Aus 806	Nov 2008	2009-164-280-281-350-
Aus 807	Nov 2008	2009-280-281-351-353-
Aus 808	Jan 2001	2007-846-848-900-1048-1049-1097-1101-2008-142-180-228-321-322-323-367-427-770-1062-1065-1110-1111-1167-1216-2009-31-133-
Aus 809	Nov 2000	2007-506-552-553-1049-1101-2008-87-144-146-479-621-1065-1169-2009-32-34-35-36-182-
Aus 810	Mar 2006	2007-464-2008-1170-2009-34-36-38-355-
Aus 811	Mar 2006	2007-464-507-2009-34-38-39-285-
Aus 812	Jan 1994	2007-507-2008-1171-
Aus 813	Mar 1962	2007-508-1104-2008-88-
Aus 814	Sep 1987	2007-466-467-508-851-950-1051-2008-279-520-771-839-1001-
Aus 817	Jan 1967	2007-852-2008-230-952-2009-40-
Aus 818	Mar 2006	2007-468-589-853-1005-2008-183-724-2009-183-
Aus 819	Mar 2006	2007-306-468-557-589-590-715-1052-2008-184-573-624-625-626-724-1066-1118-2009-183-
Aus 820	Mar 2006	2007-383-425-469-2008-185-626-2009-183-
Aus 821	Mar 2006	2007-385-470-559-2009-240-291-
Aus 822	Mar 2006	2007-425-718-2008-483-1269-
Aus 823	Jun 2007	2007-809-811-905-906-2008-231-327-574-1221-2009-140-240-289-
Aus 824	Mar 2006	2007-470-511-559-905-906-1053-2008-327-432-2009-186-240-289-
Aus 825	Mar 2006	2007-385-512-1054-
Aus 826	Mar 2006	2007-512-674-2008-775-
Aus 827	May 2006	2007-513-2008-775-
Aus 828	Apr 2006	2007-674-2008-31-434-
Aus 829	May 2006	2008-91-484-
Aus 830	Mar 2006	2007-812-2009-142-406-
Aus 831	Mar 2006	2007-812-2008-576-627-1006-2009-242-294-
Aus 832	Apr 2006	2007-343-812-2008-576-1270-
Aus 833	Jun 2006	2007-638-2008-1270-1271-2009-408-
Aus 834	Mar 2006	2007-720-2008-148-1176-1272-2009-189-243-408-
Aus 835	Mar 2006	2008-1176-1272-2009-189-243-
Aus 836	Mar 2006	2007-387-2008-1176-1272-2009-189-
Aus 837	Mar 2006	2007-307-471-857-953-1056-
Aus 839	Mar 2006	2007-344-472-2008-1120-1224-2009-50-143-363-409-
Aus 840	Nov 2003	2007-309-310-591-675-757-814-857-909-953-1006-1057-2008-232-2009-143-295-
Aus 901	Apr 2003	2006-703-
Aus 902	May 2003	2005-851-
Aus 903	May 2003	2005-851-
Aus 905	May 2003	2005-851-
Aus 920	Nov 2005	2006-113-
Aus 4060	Sep 2004	2007-648-680-722-727-756-763-812-818-820-855-1051-1052-1062-2008-143-160-522-595-632-837-863-923-1073-2009-256-
Aus 4070	Sep 2004	2007-395-680-729-820-1062-2008-856-1126-2009-157-158-
Aus 4071	Sep 2004	2007-353-680-820-1062-2008-1126-2009-54-
Aus 4074	Sep 2004	2007-395-2008-492-2009-158-
Aus 4601	Aug 2004	2007-769-2008-143-160-321-446-837-863-1062-
Aus 4602	Sep 2004	2007-756-855-1051-1052-2008-143-321-522-837-1116-2009-256-
Aus 4603	Jun 2008	2008-632-909-1012-1073-1125-2009-59-194-246-365-
Aus 4604	Jun 2008	2008-837-1121-2009-194-
Aus 4620	Jan 2009	2009-358-407-
Aus 4621	Jun 2008	2008-840-842-1121-2009-291-359-376-407-
Aus 4622	May 2008	2008-691-731-2009-45-49-194-376-
Aus 4708	Jun 2008	2008-787-1125-1283-2009-59-417-
Aus 4709	Aug 2004	2006-1033-
Aus 4710	Aug 2004	
Aus 4714	Jun 2008	2008-856-917-2009-157-
Aus 4720	Jun 2008	2008-632-635-847-1011-1012-1073-2009-246-359-
Aus 4721	Jun 2008	2008-785-847-1074-1123-1228-1280-2009-152-195-302-364-365-
Aus 4722	Jun 2008	2008-696-785-786-849-853-1125-1127-1228-1280-2009-59-416-
Aus 4726	Jan 1992	2009-371-
Aus 4727	Jun 1994	2008-379-1133-2009-202-311-371-
Aus 5000	Jan 2009	
Aus 5001	Jan 2009	
AX0117S	Jan 2008	
AX0193E	Jan 2008	2008-1216-

AX0193S	Nov 2007	2008-1216-
AX0306F	Sep 2008	
AX0309F	Sep 2008	2008-1226-1277-2009-53-151-196-364-
AX0310F	Sep 2008	2009-152-364-
AX0311F	Sep 2008	
AX0312F	Sep 2008	2009-365-
AX0313F	Sep 2008	
AX0314F	Sep 2008	2008-1228-1279-1280-
AX0315F	Sep 2008	
AX0317F	Sep 2008	
AX0319F	Sep 2008	2008-1228-
AX0321F	Sep 2008	2008-1229-1280-1281-2009-415-
AX0322F	Sep 2008	2009-55-
AX0334E	May 2008	2008-1286-2009-64-253-
AX0343E	May 2008	2008-1240-2009-200-202-373-
AX0415F	Sep 2008	2009-59-421-
AX0754E	May 2008	2009-64-253-
AX0755E	May 2008	2008-699-1025-1286-
AX0776E	May 2008	2008-700-
AX0808E	May 2008	2008-770-1062-1065-1110-1111-1167-1216-2009-31-133-
AX0809E	May 2008	2008-1065-1169-2009-32-34-36-182-
AX4603F	Sep 2008	2009-59-194-246-365-
AX4604F	Sep 2008	2009-194-
AX4620F	Sep 2008	2009-407-
AX4621F	Sep 2008	2009-291-359-376-407-
AX4708F	Sep 2008	2008-1283-2009-59-417-
AX4714F	Sep 2008	2009-157-
AX4720F	Sep 2008	2009-246-359-
AX4721F	Sep 2008	2008-1228-1280-2009-152-195-302-364-365-
AX4722F	Sep 2008	2008-1228-1280-2009-59-416-
AX60105	May 2003	2008-1022-
AX60193	Oct 2004	2008-321-322-1062-1063-1064-1216-1217-
AX60260	Jun 2006	2007-425-718-2008-1269-
AX6027S	Sep 2008	
AX60377	Nov 2007	2008-232-2009-295-
AX62735	Jan 2004	
AX63112	Jun 2004	2007-394-2008-1131-1185-1237-1285-2009-64-65-199-
AX63200	Sep 2005	2008-1065-
AX63262	Jan 2006	2007-908-
AX66001	May 2007	
AX66002	Nov 2007	2008-194-377-699-2009-64-253-
AX66003	Aug 2007	2008-901-1224-2009-50-143-
AX66022	Nov 2007	
AX67192	Oct 2004	2008-1217-
AX67215	Aug 2005	2007-635-
AX67248	Feb 2006	2007-425-
AX67261	May 2003	2007-425-
AX70117	Sep 2004	2007-356-357-2008-292-293-1131-1185-2009-155-
AX70193	Oct 2004	2008-321-322-1062-1063-1064-1216-1217-
AX72026	Jul 2005	2007-312-313-474-475-561-762-1116-2008-238-289-737-848-906-908-1014-2009-247-
AX72309	Jul 2005	2008-848-956-957-1226-1277-2009-53-151-196-364-
AX72722	Jul 2005	2007-352-561-1118-2008-737-848-906-956-957-2009-53-413-414-