



Australian Notices to Mariners are the authority for correcting Australian Charts and Publications

AUSTRALIAN NOTICES TO MARINERS

Notices 348 - 401 

Published fortnightly by the Australian Hydrographic Service

Commodore R. NAIRN RAN
Hydrographer of Australia

-
- SECTIONS.**
- I. **Australian Notices to Mariners, including blocks and notes.**
 - II. **Hydrographic Reports.**
 - III. **Navigational Warnings.**

For Notices affecting Admiralty List of Lights and Fog Signals; List of Radio Signals; and Sailing Directions see **British Notices to Mariners.**

The substance of these notices should be inserted on the charts affected.

Bearings are referred to the true compass and are reckoned clockwise from North; those relating to lights are given as seen by an observer from seaward. Positions quoted in permanent notices relate to the horizontal datum for the chart(s). When preliminary or temporary notices affect multiple charts, positions will be provided in relation to only one horizontal datum and that datum will be specified. When the multiple charts do not have a common horizontal datum, mariners will be required to adjust the position(s) for those charts not on the specified datum. The range quoted for a light is its nominal range. Depths are with reference to the chart datum of each chart. Heights are above mean high water springs or mean higher high water, as appropriate.

The capital letter (P) or (T) after the number of any notice denotes a preliminary or temporary notice respectively, which are contained separately at the end of the permanent notices. A star () adjacent to the number of a notice indicates that the notice is based on original information.*

Mariners are particularly requested to notify the AUSTRALIAN HYDROGRAPHIC SERVICE, Locked Bag 8801 Wollongong, NSW 2500 (Fax 02-4223 6599, e-mail Hydro.NTM@defence.gov.au or, alternatively by filling in and submitting the **Hydrographic Notes forms located on the web site – www.hydro.gov.au), immediately on the discovery of new dangers or suspected dangers to navigation. For changes or defects in aids to navigation notify AusSAR (Fax 02-6230 6868 or email rccaus@amsa.gov.au).**

Copies of Australian notices are available free of charge from the Australian Hydrographic Service (AHS) website (www.hydro.gov.au) and through the eNotices (email) service (www.hydro.gov.au/enotices/enotices.htm).

Individual Notices may be copied for the purpose of inserting Notice substance on official charts and publications. Paper copies may be printed by chart agents and distributed to customers on a cost recovery basis. Participating chart agents are listed on the AHS website as providing a 'Paper Notices to Mariners' service (www.hydro.gov.au/prodserv/distributors/distributors.htm). Copies of the notices may not be sold for profit without prior written agreement.

IMPORTANT NOTICE

This edition of Notices to Mariners includes all significant information affecting AHS products which the AHS has become aware of since the last edition. All reasonable efforts have been made to ensure the accuracy and completeness of the information, including third party information, on which these updates are based. The AHS regards third parties from which it receives information as reliable, however the AHS cannot verify all such information and errors may therefore exist. The AHS does not accept liability for errors in third party information.

© Commonwealth of Australia 2009

This work is copyright. Apart from any use permitted under the Copyright Act 1968, no part may be reproduced by any process, adapted, communicated or commercially exploited without prior written permission from The Commonwealth represented by the Australian Hydrographic Service.

NUMERICAL INDEX OF NOTICES TO MARINERS

Edition No 6

Notices	Aus Chart, INT Chart, ENC Cell, AHP
348.....	Aus 4, 23, 40, 57, 58, 63, 74, 113, 157, 222, 235, 265, 371, 372, 373, 374, 620, 701, 762, 763, 4620, AX 6027S, AU302150, 303153, 304149, 304150, 304153, 304154, 304155, 402149, 403149, 403150, 406150, 434121, 5XXX54
349.....	Amendment to Australian Notice to Mariners No 2
350.....	Aus 806
351.....	Aus 807
352.....	Aus 191
353.....	Aus 191, 807
354.....	Aus 209
355.....	Aus 810
356.....	Aus 609
357.....	Aus 245, 246
358.....	Aus 4620, INT 620
359.....	Aus 4621, 4720, INT 621, 720, AX 4621F, 4720F
360.....	Aus 379, 507
361.....	Aus 386, 396
362.....	Aus 399
363.....	Aus 292, 294, 301, 376, 700, 839
364.....	Aus 309, 310, 4721, INT 721, AX 0309F, 0310F, 4721F, 72309
365.....	Aus 312, 4603, 4721, INT 603, 721, AX 0312F, 4603F, 4721F
366.....	Aus 32
367.....	Aus 326
368.....	Aus 59
369.....	Aus 748, 749
370.....	Aus 113
371.....	Aus 119, 762, 4726, 4727, INT 726, 727
372.....	Aus 342
373.....	Aus 343, AX 0343E
374.....	Aus 167
375.....	Aus 422, 487, 801, 802
376.....	Aus 4621, 4622, INT 621, 622, AX 4621F
377(T).....	Aus 235, 236
378(T).....	Aus 236
379(T).....	Aus 236
380(T).....	Aus 236, 814
381(T).....	Aus 236
382(T).....	Aus 365
383(T).....	Aus 364, 365, 424
384(T).....	Aus 244, 245, 246, AU5244X5
385(T).....	Aus 247, AU5247P1
386(T).....	Aus 249, 250
387(T).....	Aus 250
388(T).....	Aus 255, 826
389(T).....	Aus 4720, INT 720
390(T).....	Aus 24, 26, 28
391(T).....	Aus 328, 329, 744, AU422114
392(T).....	Aus 81, 332, 333, 416, 417, 751
393(T).....	Aus 130, 137
394(T).....	Aus 168
395(T).....	Aus 168, AU5167X8
396(T).....	Aus 168, AU5167X8
397(T).....	Aus 164, 799, AU442146, 5164P2
398(T).....	Aus 143, 144, 158, 788, AU439144
399(T).....	Aus 143, 144, 158, AU439144
400(T).....	Aus 143, 144, 158, 349, 788, AU439144
401(T).....	Summer time

ENC Cell	Notices
AU302150	348
AU303153	348
AU304149	348
AU304150	348
AU304153	348
AU304154	348
AU304155	348
AU402149	348
AU403149	348
AU403150	348
AU406150	348
AU422114	391(T)
AU434121	348
AU439144	398(T), 399(T), 400(P)
AU442146	397(T)
AU5XXX54	348
AU5164P2	397(T)
AU5167X8	395(T), 396(T)
AU5244X5	384(T)
AU5247P1	385(T)

348 AUSTRALIA - Products

Australian Hydrographic Service (AA380763, AA382687, AA394413, AA396637, AA396869)

New Chart

<i>Chart</i>	<i>Published</i>	<i>Title and description of amendments</i>	<i>Scale</i>	<i>Folio</i>	<i>Index Chart</i>	<i>Price</i>
Aus 23	13/02/2009	Australia - North Coast - Northern Territory - Apsley Strait (Southern Sheet) 11° 40' 00" S - 11° 57' 42" S 130° 31' 54" E - 130° 47' 00" E <i>New chart providing improved coverage of the southern approaches to Apsley Strait.</i>	1:50 000	2	Aus 5000	\$35.00
Aus 40	30/01/2009	Australia - North West Coast - Western Australia - Yampi Sound 15° 58' 24" S - 16° 11' 36" S 123° 30' 00" E - 123° 51' 42" E <i>New metric chart referred to WGS84 datum and LAT, providing improved coverage of the approaches to Yampi Sound.</i>	1:37 500	3	Aus 5000	\$35.00
Aus 74	30/01/2009	Australia - West Coast - Western Australia - Approaches to Useless Loop 25° 43' 36" S - 26° 11' 30" S 113° 09' 00" E - 113° 28' 30" E Plan: Slope Island 26° 04' 54" S - 26° 05' 48" S 113° 24' 42" E - 113° 25' 36" E <i>New chart providing improved coverage of the approaches to Useless Loop.</i>	1:50 000 1:7 500	3	Aus 5001	\$35.00

New Edition

<i>Chart</i>	<i>Published</i>	<i>Title and description of amendments</i>	<i>Scale</i>	<i>Folio</i>	<i>Index Chart</i>	<i>Price</i>
Aus 4	13/02/2009	Australia - North Coast - Queensland - Approaches to Weipa Plan: Port of Weipa <i>Limited new edition, only updated for horizontal datum shift to WGS84.</i>	1:75 000 1:15 000	8	Aus 5000	\$35.00
Aus 57	13/02/2009	Australia - North West Coast - Western Australia - Dampier Archipelago <i>Limited new edition to update major change to port limit.</i>	1:75 000	3	Aus 5000	\$35.00
Aus 58	13/02/2009	Australia - North West Coast - Western Australia - Port of Dampier <i>Limited new edition to update major change to port limit.</i>	1:37 500	3	Aus 5000	\$35.00
Aus 63	30/01/2009	Australia - North West Coast - Western Australia - Mary Anne Passage <i>Limited new edition, only updated for horizontal datum shift to WGS84.</i>	1:50 000	3	Aus 5000 & 5001	\$35.00
Aus 113	30/01/2009	Australia - West Coast - Western Australia - Port of Fremantle <i>Limited new edition, only updated for horizontal datum shift to WGS84.</i>	1:7 500	4	Aus 5001	\$35.00

Aus235	30/01/2009	Australia - East Coast - Queensland - Approaches to Moreton Bay Plan: Mooloolaba Harbour <i>Limited new edition, only updated for horizontal datum shift to WGS84.</i>	1:75 000 1:10 000	7	Aus 5001	\$35.00
Aus 701	13/02/2009	Australia - North Coast - Queensland - Vriilya Point to Duyfken Point <i>Limited new edition, updated for maritime boundaries and horizontal datum shift to WGS84.</i>	1:150 000	8	Aus 5000	\$35.00
Aus 762	30/01/2009	Australia - South Coast - Western Australia - Investigator Island to Cape Le Grand <i>Limited new edition, updated for maritime boundaries and horizontal datum shift to WGS84.</i>	1:150 000	4	Aus 5001	\$35.00
Aus 763	30/01/2009	Australia - South Coast - Cape Le Grand to Cape Pasley <i>Limited new edition, updated for maritime boundaries and horizontal datum shift to WGS84.</i>	1:150 000	4	Aus 5001	\$35.00
Aus 4620	30/01/2009	Australia - Papua New Guinea - Percy Isles to Booby Island including Gulf of Papua <i>Limited new edition with amended chart limits for impact of withdrawn charts Aus 371, 372, 373, 374.</i>	1:1 500 000	1	Aus 5000 & 5001	\$35.00

New Miscellaneous Chart

Chart	Published	Title	Scale	Remarks
AX 6027S	27/03/2009	Australia - East Coast - Queensland - Cooper Point to Mackay Reef	1:150 000	Fleet use only.

New Electronic Navigation Chart (Seafarer ENC)

Cell Name	Released	Title
AU302150	March 2009	South Pacific Ocean - Enus Island to Emirau Island
AU303153	March 2009	South Pacific Ocean - Cell 3
AU304149	March 2009	Bismark Sea - Cell 4
AU304150	March 2009	Bismark Sea - Cell 3
AU304153	March 2009	South Pacific Ocean - Tanga Islands
AU304154	March 2009	South Pacific Ocean - Malum and Nuguria Islands
AU304155	March 2009	South Pacific Ocean - Cell 2
AU402149	March 2009	Bismark Sea - Mussau Island
AU403149	March 2009	Bismark Sea - Western Approach to Lavongai
AU403150	March 2009	South Pacific Ocean and Bismark Sea - Lavongai to Djaiu Island
AU406150	March 2009	Bismark Sea - Bangula Bay to Willaumez Peninsula
AU434121	March 2009	Western Australia - Approaches to Esperance
AU5XXX54	March 2009	Western Australia - Port Hedland

New Chart to be published shortly

Chart	Title	Scale	Expected Publication Date	Expected Stock Availability
Aus 157	Australia - South Coast - Victoria - Port of Geelong and Approaches Plans: Point Wilson Pier Point Henry Pier Clifton Springs	1:37 5000 1:10 000 1:10 000 1:5 000	27 March 2009	4 May 2009
Aus 222	Australia - East Coast - New South Wales - Clarence River and Approaches	1:15 000	27 March 2009	4 May 2009
Aus 265	Australia - East Coast - Queensland - Approaches to Port Alma Plan: Port Alma	1:25 000 1:10 000	27 March 2009	4 May 2009

Chart permanently withdrawn

<i>Chart</i>	<i>On publication of new chart</i>
Aus 4	Aus 4
Aus 57	Aus 57
Aus 58	Aus 58
Aus 63	Aus 63
Aus 113	Aus 113
Aus 235	Aus 235
Aus 701	Aus 701
Aus 762	Aus 762
Aus 763	Aus 763
Aus 4620	Aus 4620

Chart permanently withdrawn without replacement

<i>Chart</i>	<i>Remarks</i>
Aus 371	See Aus 824, 825, 826, 827, 828, 829, 830, 831, 832, 833, 834
Aus 372	for charting coverage of waters covered by Aus 371 to 374.
Aus 373	
Aus 374	<i>Note:</i> see accompanying block for index chart Aus 5000 update.
Aus 620	

For further details refer to the AHS website at www.hydro.gov.au for new edition and new chart stock arrival information.

When placing orders with a chart agent, mariners should advise whether their order pertains to the current edition or the new edition.

349 AUSTRALIA - Product - Amendment to Australian Notice to Mariners No 2

Australian Hydrographic Service (AA393737)

Page 8

Delete entry for Mapworld (Canberra) New South Wales

350* AUSTRALIA - NEW SOUTH WALES - Tura Head - Contour

Australian Hydrographic Service (AA394423)

Aus 806 [281/2009]

Insert	contour to enclose depth, 50m	36° 51'.8 S	150° 00'.2 E
--------	-------------------------------	-------------	--------------

351* AUSTRALIA - NEW SOUTH WALES - Toragy Point - Depths northwards and eastnortheastwards

Australian Hydrographic Service (AA396470)

Aus 807 [281/2009]

Substitute	depth, 4 ₅ m, for depth, 5 ₅ m	35° 52'.3 S	150° 10'.0 E
	depth, 2151m, for depth, 3151m	35° 44'.8 S	150° 50'.8 E

352* AUSTRALIA - NEW SOUTH WALES - Batemans Bay - Depth

Australian Hydrographic Service (AA393434)

Aus 191 (plan, Batemans Bay) [234/2009]

Substitute	depth, 1 ₇ m, for depth, 2 ₇ m	35° 43'.07 S	150° 15'.65 E
------------	--	--------------	---------------

353* AUSTRALIA - NEW SOUTH WALES - Ulladulla - Bearing
NSW Maritime (AA391672, AA391673)

Aus 191 (plan, Ulladulla) [352/2009]

Amend legend to 269.1° 35° 21'.32 S 150° 29'.73 E

Aus 807 [351/2009]

Amend legend to 269.1° 35° 21'.2 S 150° 31'.5 E

354* AUSTRALIA - NEW SOUTH WALES - Port Stephens - Nelson Bay - Navline
NSW Maritime (AA391213)

Aus 209 [284/2009]

Delete dashed and continuous line with legend, between 32° 43'.67 S 152° 07'.98 E
32° 42'.18 S 152° 10'.05 E
legend, Leading Knoll 32° 43'.69 S 152° 08'.10 E

355* AUSTRALIA - NEW SOUTH WALES - Crowdy Head - Light sector
Australian Hydrographic Service (AA394943)

Aus 810 [38/2009]

On certain copies only

Insert legend, W, centred on 31° 52'.9 S 152° 45'.3 E

356* AUSTRALIA - TASMAN SEA - Norfolk Island - ZOC diagram; chart notes; legends
Australian Hydrographic Service (AA318722)

Aus609 [809/2005]

Substitute accompanying ZOC diagram for reliability diagram 29° 10'.0 S 167° 15'.0 E

Delete note, INADEQUATELY SURVEYED in N border 28° 39'.0 S 167° 57'.0 E
note, UNSURVEYED AREAS in N border 28° 39'.0 S 167° 57'.0 E
legend, Inadequately Surveyed (see Note) 28° 51'.2 S 167° 49'.0 E
legend, Inadequately Surveyed (see Note) 29° 22'.7 S 167° 56'.0 E

Aus609 (plan, Norfolk and Phillip Islands)

Amend legend to *UNSURVEYED* 28° 59'.4 S 167° 55'.5 E
legend to *UNSURVEYED* 29° 02'.2 S 168° 00'.1 E
legend to *UNSURVEYED* 29° 02'.8 S 167° 54'.9 E
legend to *UNSURVEYED* 29° 03'.7 S 167° 59'.0 E
legend to *UNSURVEYED* 29° 06'.7 S 167° 58'.0 E
legend to *UNSURVEYED* 29° 07'.8 S 167° 56'.5 E

Delete legend, Inadequately Surveyed (see Note) 28° 58'.3 S 168° 00'.5 E

Aus609 (plan, Cascade Bay)

Amend legend to *UNSURVEYED* 29° 00'.55 S 167° 57'.75 E

Aus 609 (plan, Sydney Bay)

Amend legend to *UNSURVEYED* 29° 03'.77 S 167° 56'.59 E
legend to *UNSURVEYED* 29° 03'.45 S 167° 56'.94 E
legend to *UNSURVEYED* 29° 03'.81 S 167° 57'.76 E

357* AUSTRALIA - QUEENSLAND - Gladstone - Gatcombe Channel - Anchorage revoked
Maritime Safety Queensland Notice 138/2009 (AA390781)

Aus 245 [287/2009]

Delete legend, Gatcombe Emergency Anchorage 23° 53'.48 S 151° 21'.97 E

Aus 246 [1175/2008]

Delete legend, Gatcombe Emergency Anchorage 23° 53'.48 S 151° 22'.02 E

358* AUSTRALIA - QUEENSLAND - Hydrographers Passage - Depth
LADS Flight (AA387590, AA387591)

Aus 4620 (INT 620) [NE 30/1/2009]

Insert depth, 8₂m, enclosed by contour 20° 16'.9 S 150° 25'.2 E

Delete depth, 10₅m, and enclosing contour 20° 17'.0 S 150° 25'.0 E

359* AUSTRALIA - QUEENSLAND - Gloucester Island to Cape Weymouth - Chart limits
Australian Hydrographic Service (AA380763)

Aus 4621 (INT 621) [291/2009]

Insert magenta limits, with legend Aus 826 in NE corner,
between 20° 05'.1 S 148° 00'.0 E
20° 05'.1 S 148° 22'.6 E
18° 35'.9 S 148° 22'.6 E
18° 35'.9 S 148° 00'.0 E

Delete magenta limits, with legend Aus 371, centred on
magenta limits, with legend Aus 372, centred on 19° 30'.0 S 148° 48'.0 E
18° 00'.0 S 148° 20'.0 E

Aus 4720 (INT 720) [246/2009]

Delete magenta limits, with legend Aus 374, centred on 14° 00'.0 S 143° 25'.0 E

AX 4621F [291/2009]

Insert magenta limits, with legend Aus 826 in NE corner,
between 20° 05'.1 S 148° 00'.0 E
20° 05'.1 S 148° 22'.6 E
18° 35'.9 S 148° 22'.6 E
18° 35'.9 S 148° 00'.0 E

Delete magenta limits, with legend Aus 371, centred on
magenta limits, with legend Aus 372, centred on 19° 30'.0 S 148° 48'.0 E
18° 00'.0 S 148° 20'.0 E

AX 4720F [246/2009]

Delete magenta limits, with legend Aus 374, centred on 14° 00'.0 S 143° 25'.0 E

360* PAPUA NEW GUINEA - Hall Sound to Fife Bay - Chart limits
Australian Hydrographic Service (AA378701)

Aus 379 [191/2009]

Delete magenta limits, with legend Aus 620, centred on 8° 50'.0 S 146° 32'.0 E
magenta limits, with legend Aus 620, centred on 9° 15'.0 S 146° 54'.0 E

Aus 507 [524/2008]

Delete magenta limits, with legend Aus 620, centred on 10° 35'.5 S 150° 01'.5 E

361* PAPUA NEW GUINEA - Ampul Island to Cape Pasawati - Depths
 HMAS *Shepparton* and *Benalla* (AA390093)

Aus 386 [904/2008]

Insert accompanying block 6° 10'.0 S 149° 20'.0 E

Aus 396 [47/2009]

Insert accompanying block 6° 20'.0 S 149° 30'.0 E

362* PAPUA NEW GUINEA - Bougainville Island - Chart note; legends
 Australian Hydrographic Service (AA395351)

Aus 399 [734/2008]

Insert magenta legend, *Former Mined Area* (see Note),
 centred on 5° 23'.5 S 154° 47'.5 E

magenta legend, *Former Mined Area* (see Note),
 centred on 7° 10'.5 S 155° 56'.0 E

Delete note, NAVIGATION LIGHTS 4° 51'.0 S 156° 01'.0 E

363* AUSTRALIA - QUEENSLAND - Parau Island - Depths
 DGST (AA391274)

Aus 292 [147/2009]

Insert depth, 2₂m, enclosed by contour 10° 49'.98 S 142° 19'.29 E
 depth, 9₄m, enclosed by contour 10° 50'.24 S 142° 20'.12 E

Delete depth, 8₆m 10° 50'.0 S 142° 19'.3 E
 rock and enclosing danger circle 10° 50'.1 S 142° 19'.2 E

Aus 294 [846/2008]

Insert depth, 1₃m, and extend contour SE to enclose 10° 51'.27 S 142° 20'.65 E
 depth, 2₂m, enclosed by contour 10° 50'.07 S 142° 19'.23 E
 depth, 8₉m, enclosed by contour 10° 51'.94 S 142° 18'.66 E
 depth, 9₄m, enclosed by contour 10° 50'.33 S 142° 20'.06 E

Delete depth, 1₉m 10° 51'.2 S 142° 20'.6 E
 depth, 8₆m 10° 50'.1 S 142° 19'.2 E
 danger circle, centred on 10° 50'.1 S 142° 19'.2 E

Aus 294 (plan, Approaches to Red Island Point)

Insert depth, 9₄m, enclosed by contour 10° 50'.327 S 142° 20'.062 E

Aus 301 [436/2008]

Insert depth, 8₉m, and extend contour S to enclose 10° 51'.94 S 142° 18'.67 E
 depth, 9₄m, and extend contour W to enclose 10° 50'.33 S 142° 20'.07 E

Delete depth, 9₂m 10° 51'.3 S 142° 18'.6 E

Aus 376 [295/2009]

Insert depth, 8₉m, and extend contour S to enclose 10° 51'.85 S 142° 18'.72 E
 depth, 9₄m, and extend contour W to enclose 10° 50'.24 S 142° 20'.12 E

Delete depth, 9₂m 10° 51'.1 S 142° 18'.6 E

363* AUSTRALIA - QUEENSLAND - Parau Island – Depths (continued)**Aus 700** [1276/2008]

Insert	depth, 8 ₉ m, enclosed by contour	10° 51'.85 S	142° 18'.72 E
	depth, 9 ₄ m, enclosed by contour	10° 50'.24 S	142° 20'.12 E
	depth, 2 ₂ m, semi enclosed by contour to N	10° 49'.98 S	142° 19'.29 E

Substitute	depth, 1 ₃ m, for depth, 1 ₉ m	10° 51'.2 S	142° 20'.7 E
------------	--	-------------	--------------

Delete	depth, 10 ₅ m	10° 51'.7 S	142° 19'.0 E
	depth, 10 ₈ m	10° 50'.0 S	142° 20'.0 E

Aus 839 [143/2009]

Insert	depth, 8 ₉ m, enclosed by contour	10° 51'.85 S	142° 18'.72 E
	depth, 9 ₄ m, enclosed by contour	10° 50'.24 S	142° 20'.12 E
	depth, 2 ₂ m, semi enclosed by contour to N	10° 49'.98 S	142° 19'.29 E

Substitute	depth, 1 ₃ m, for depth, 1 ₉ m	10° 51'.2 S	142° 20'.7 E
------------	--	-------------	--------------

Delete	depth, 10 ₅ m	10° 51'.7 S	142° 19'.0 E
	depth, 10 ₈ m	10° 50'.0 S	142° 20'.0 E

364* AUSTRALIA - NORTHERN TERRITORY - Marie Shoal - DepthsHS *Blue* (DHDB 1111396)**Aus 309** [196/2009]

Insert	accompanying block	10° 55'.0 S	130° 08'.0 E
--------	--------------------	-------------	--------------

Aus 310 [152/2009]

Insert	accompanying block	10° 55'.0 S	130° 08'.0 E
--------	--------------------	-------------	--------------

Aus 4721 (INT 721) [302/2009]

Insert	accompanying block	10° 30'.0 S	130° 15'.0 E
--------	--------------------	-------------	--------------

AX 0309F [196/2009]

Insert	accompanying block	10° 55'.0 S	130° 08'.0 E
--------	--------------------	-------------	--------------

AX 0310F [152/2009]

Insert	accompanying block	10° 55'.0 S	130° 08'.0 E
--------	--------------------	-------------	--------------

AX 4721F [302/2009]

Insert	accompanying block	10° 30'.0 S	130° 15'.0 E
--------	--------------------	-------------	--------------

AX 72309 [196/2009]

Insert	accompanying block	10° 55'.0 S	130° 08'.0 E
--------	--------------------	-------------	--------------

365* AUSTRALIA - TIMOR SEA - Sahul Banks - Depth
HS Red (DHDB 1182766)

Aus 312 [NE 25/4/2008]

Delete depth, 5m, and enclosing contour with legend 11° 07'.0 S 126° 01'.0 E

Aus 4603 (INT 603) [246/2009]

Delete depth, 5m, and enclosing danger circle 11° 07'.0 S 126° 01'.0 E

Aus 4721 (INT 721) [364/2009]

Delete depth, 5m, and enclosing contour with legend 11° 07'.0 S 126° 01'.0 E

AX 0312F [NC 26/9/2008]

Delete depth, 5m, and enclosing contour with legend 11° 07'.0 S 126° 01'.0 E

AX 4603F [246/2009]

Delete depth, 5m, and enclosing danger circle 11° 07'.0 S 126° 01'.0 E

AX 4721F [364/2009]

Delete depth, 5m, and enclosing contour with legend 11° 07'.0 S 126° 01'.0 E

366* AUSTRALIA - WESTERN AUSTRALIA - Wyndham - Depths

Department for Planning and Infrastructure WA (DHDB 1119306)

Aus 32 (plan, Approaches to Wyndham Wharf) [248/2009]

Insert accompanying block 15° 27'.5 S 128° 05'.0 E

367* AUSTRALIA - WESTERN AUSTRALIA - Bedout Islet to Port Walcott - ZOC diagram; chart note; legends; chart limits

Australian Hydrographic Service (AA318722, AA395499)

Aus 326 [1129/2008]

Insert magenta limits, with legend *Aus 741* in NE corner, 20° 44'.3 S 117° 18'.2 E
between 19° 17'.2 S 117° 18'.2 E
19° 17'.2 S 117° 09'.0 E

Substitute accompanying ZOC diagram for reliability diagram 17° 45'.0 S 117° 18'.0 E

Delete legend, Inadequately Surveyed (see Note) 19° 45'.3 S 119° 03'.0 E
legend, Inadequately Surveyed (see Note) 20° 06'.6 S 118° 39'.0 E
legend, Inadequately Surveyed (see Note) 20° 15'.0 S 118° 24'.0 E
note, INADEQUATELY SURVEYED 20° 42'.0 S 119° 00'.0 E

368* AUSTRALIA - WESTERN AUSTRALIA - Dampier - Nav aidsDampier Port Authority Notice 4/2009 (AA393451, AA393454, AA312366, AA312271, AA395577), HMAS *Coonawarra* (AA244112)**Aus 59 (plan, Withnell Bay to King Bay) [250/2009]**

Insert	light, <i>F.WRG.3M</i>	20° 37'.137 S	116° 45'.028 E
	dashed line, between	20° 37'.137 S	116° 45'.028 E
		20° 36'.730 S	116° 44'.550 E
	legend, <i>Dir 132.1°</i> , centred on	20° 35'.676 S	116° 43'.338 E
	beacon with triangular topmark, apex up	20° 38'.032 S	116° 45'.259 E
	beacon	20° 38'.032 S	116° 45'.325 E
	a dashed line in a direction 270° for a distance of 350m, thence a continuous line for 2150m, with legend <i>090°</i> , emanating from light	20° 38'.032 S	116° 45'.325 E
	lit mooring buoy, <i>Fl.Y.4s</i>	20° 37'.40 S	116° 44'.23 E

Aus 59 (plan, Dampier Wharves) [250/2009]

Insert	legend, <i>Dir 132.1°</i> , centred on	20° 35'.531 S	116° 43'.156 E
Delete	lit mooring buoy	20° 37'.40 S	116° 41'.24 E

369* AUSTRALIA - WESTERN AUSTRALIA - Shark Bay - Useless Loop - Chart limits, depths

Australian Hydrographic Service (AA380763, DHDB 271714)

Aus 748 [640/2008]

Insert	magenta limits, with legend <i>Aus 74</i> in SE corner, between	26° 11'.5 S	113° 17'.6 E
		26° 11'.5 S	113° 28'.5 E
		25° 43'.6 S	113° 28'.5 E
		25° 43'.6 S	113° 17'.6 E
Delete	magenta limits, with legend See Aus 749, centred on	26° 05'.3 S	113° 25'.2 E

Aus 749 [307/2009]

Insert	magenta limits, with legend <i>Aus 74</i> in NW corner, between	26° 11'.5 S	113° 09'.0 E
		26° 11'.5 S	113° 28'.5 E
		25° 43'.6 S	113° 28'.5 E
		25° 43'.6 S	113° 09'.0 E
		26° 11'.5 S	113° 09'.0 E
	accompanying block	26° 48'.0 S	112° 50'.0 E
	legend, <i>Inadequately Surveyed (see ZOC diagram)</i> , centred on	25° 49'.5 S	113° 23'.5 E
Delete	magenta limits, with legend See Plan, centred on	26° 05'.3 S	113° 25'.2 E

370* AUSTRALIA - WESTERN AUSTRALIA - Fremantle - Prohibited anchorage limit

UKHO (AA395466)

Aus 113 [NE 30/1/2009]

Insert	anchoring prohibited limit, between	32° 02'.694 S	115° 41'.359 E
		32° 01'.714 S	115° 41'.886 E
Delete	anchoring prohibited limit, between	32° 02'.69 S	115° 41'.36 E
		32° 01'.72 S	115° 41'.36 E

371* AUSTRALIA - WESTERN AUSTRALIA - Figure of Eight Island to Cull Island - Lights

Australian Maritime Safety Authority (AA307245), Department for Planning and Infrastructure WA (AA390721 - AA390723), UKHO (AA390746)

Aus 119 [917/2007]

Amend	light range to 17M	34° 02'.0 S	121° 36'.3 E
	light to <i>F(4)16s 95m 11M</i>	33° 55'.3 S	121° 54'.3 E

Aus 762 [NE 30/1/2009]

Amend	light range to 17M	34° 02'.0 S	121° 36'.3 E
-------	--------------------	-------------	--------------

Aus 4726 (INT 726) [1033/2006]

Amend	light range to 17M	34° 02'.0 S	121° 36'.0 E
-------	--------------------	-------------	--------------

Aus 4727 (INT 727) [311/2009]

Amend	light range to 17M	34° 02'.0 S	121° 36'.0 E
-------	--------------------	-------------	--------------

372* AUSTRALIA - SOUTH AUSTRALIA - Streaky Bay to Whidbey Isles - ZOC diagram; chart note; legends

Australian Hydrographic Service (AA318722)

Aus 342 [708/2006]

Substitute	accompanying ZOC diagram for reliability diagram	33° 10'.0 S	135° 15'.0 E
------------	--	-------------	--------------

Delete	note, INADEQUATELY SURVEYED	32° 51'.0 S	135° 20'.0 E
	legend, Inadequately Surveyed (see Note)	32° 36'.5 S	133° 49'.0 E
	legend, Inadequately Surveyed (see Note)	33° 19'.7 S	134° 27'.0 E
	legend, Inadequately Surveyed (see Note)	34° 03'.3 S	135° 06'.0 E
	legend, Inadequately Surveyed (see Note)	34° 46'.8 S	135° 22'.0 E

373* AUSTRALIA - SOUTH AUSTRALIA - Whidbey Isles to Cape Du Couedic - ZOC diagram; chart note; legends

Australian Hydrographic Service (AA318722)

Aus 343 [202/2009]

Substitute	accompanying ZOC diagram for reliability diagram	36° 10'.0 S	134° 32'.0 E
------------	--	-------------	--------------

Delete	note, INADEQUATELY SURVEYED	36° 10'.0 S	134° 12'.0 E
	legend, Inadequately Surveyed (see Note)	34° 50'.4 S	135° 12'.5 E
	legend, Inadequately Surveyed (see Note)	36° 11'.9 S	136° 49'.5 E

AX 0343E [202/2009]

Substitute	accompanying ZOC diagram for reliability diagram	36° 10'.0 S	134° 32'.0 E
------------	--	-------------	--------------

Delete	note, INADEQUATELY SURVEYED	36° 10'.0 S	134° 12'.0 E
	legend, Inadequately Surveyed (see Note)	34° 50'.4 S	135° 12'.5 E
	legend, Inadequately Surveyed (see Note)	36° 11'.9 S	136° 49'.5 E

374* AUSTRALIA - TASMANIA - Port Dalrymple - Saltpan Point - Light beacon

Marine and Safety Tasmania Notice M40/2009 (AA390769)

Aus 167 [703/2008]

Amend	light to <i>Oc.R.6s</i>	41° 07'.44 S	146° 49'.06 E
-------	-------------------------	--------------	---------------

375* AUSTRALIA - VICTORIA - Cape Liptrap - Light
 Australian Maritime Safety Authority (AA373286 - AA373288)

Aus 422 [205/2009]			
Amend	light range to 16M	38° 54'.4 S	145° 55'.4 E
Aus 487 [205/2009]			
Amend	light range to 16M	38° 54'.4 S	145° 55'.4 E
Aus 801 [205/2009]			
Amend	light to Fl. 12s 93m 16M	38° 54'.4 S	145° 55'.4 E
Aus 802 [314/2009]			
Amend	light to Fl. 12s 93m 16M	38° 54'.5 S	145° 55'.2 E

376 PACIFIC OCEAN - Solomon Islands - New Georgia Group - Islet
 BA Notice 11/1287/2009 (AA391451)

Aus 4621 (INT 621) [359/2009]			
Substitute	islet for light	8° 22'.9 S	157° 13'.5 E
Aus 4622 (INT 622) [194/2009]			
Substitute	islet for light	8° 22'.9 S	157° 13'.7 E
AX 4621F [359/2009]			
Substitute	islet for light	8° 22'.9 S	157° 13'.5 E

377(T)/2009 AUSTRALIA - QUEENSLAND - Moreton Bay - Skirmish Passage - Wreck*Former Notice* - 1069(T)/2007 is cancelled

Maritime Safety Queensland Notice 72/2009 (AA384344, AA395948)

A wreck exists in position 26° 59'.63 S 153° 10'.88 E (WGS84 datum).

Mariners are advised to navigate with caution in the area.

Chart temporarily affected - Aus 235 - Aus 236**378(T)/2009 AUSTRALIA - QUEENSLAND - Lamb Island to Macleay Island - Harbour works completed***Former Notice* - 1191(T)/2008 is cancelled

Maritime Safety Queensland Notice 687(T)/2008, 698(T)/2008 (AA367559, AA367954)

Cancel this notice on receipt.

Chart formerly affected - Aus 236**379(T)/2009 AUSTRALIA - QUEENSLAND - Moreton Bay - Russell Island - Harbour works completed***Former Notice* - 210(T)/2009 is cancelled

Maritime Safety Queensland Notice 69(T)/2009 (AA384448)

Cancel this notice on receipt.

Chart formerly affected - Aus 236**380(T)/2009 AUSTRALIA - QUEENSLAND - Moreton Bay - Bramble Bay - Bridge construction***Former Notices* - 347(T)/2008 and 546(T)/2008 are cancelled*Date* - Until 30 June 2011

Maritime Safety Queensland Notice 171(T)/2008, 164(T)/2009, 166(T)/2009 (AA323151, AA395818, AA396377)

Construction of the Houghton Highway Bridge is in progress in position 27° 17'.01 S 153° 03'.89 E (WGS84 datum).

A falsework bridge exists to the east of the existing bridge. The seaward limit of the falsework bridge will be marked by lights, Q.Y.

Nav aids exist as follows:

<i>Position</i>	<i>Remarks</i>
27° 15'.84 S 153° 04'.62 E	port beacon
27° 15'.95 S 153° 04'.75 E	starboard buoy
27° 15'.97 S 153° 04'.74 E	port buoy
27° 16'.56 S 153° 04'.29 E	lit starboard buoy, <i>Fl.G.2-5s</i>
27° 16'.60 S 153° 04'.26 E	lit port buoy, <i>Fl.R.2-5s</i>
27° 16'.57 S 153° 04'.11 E	lit starboard buoy, <i>Fl.G.2-5s</i>
27° 16'.59 S 153° 04'.09 E	lit port buoy, <i>Fl.R.2-5s</i>

Mariners should navigate with caution in the area.

Chart temporarily affected - Aus 236 - Aus 814**381(T)/2009 AUSTRALIA - QUEENSLAND - Moreton Bay - Bramble Bay - Harbour works completed***Former Notice* - 1147(T)/2008 is cancelled

Maritime Safety Queensland Notice 690(T)/2008 (AA367579)

Cancel this notice on receipt.

Chart formerly affected - Aus 236

382(T)/2009 AUSTRALIA - QUEENSLAND - Arkwright Point - Scientific instruments recovered northeastwards
Former Notice - 1041(T)/2008 is cancelled
Maritime Safety Queensland Notice 625(T)/2008 (AA362543)

Cancel this notice on receipt.

Chart formerly affected - Aus 365

383(T)/2009 AUSTRALIA - QUEENSLAND - Cape Moreton - Live firing northeastwards cancelled
Former Notice - 323(T)/2009 is cancelled
Department of Defence RAAF (AA396899)

Cancel this notice on receipt.

Chart formerly affected - Aus 364 - Aus 365 - Aus 424

384(T)/2009 AUSTRALIA - QUEENSLAND - Gladstone - Dredging operations completed
Former Notice - 325(T)/2009 is cancelled
Maritime Safety Queensland Notice 172(T)/2009 (AA396922)

Cancel this notice on receipt.

Chart formerly affected - Aus 244 - Aus 245 - Aus 246 - AU5244X5

385(T)/2009 AUSTRALIA - QUEENSLAND - Port Alma - Harbour works completed
Former Notice - 1196(T)/2008 is cancelled
Maritime Safety Queensland Notice 704(T)/2008 (AA368472)

Cancel this notice on receipt.

Chart formerly affected - Aus 247 - AU5247P1

386(T)/2009 AUSTRALIA - QUEENSLAND - Hay Point - Harbour works completed
Former Notice - 550(T)/2008 is cancelled
Maritime Safety Queensland Notice 293(T)/2008 (AA337612)

Cancel this notice on receipt.

Chart formerly affected - Aus 249 - Aus 250

387(T)/2009 AUSTRALIA - QUEENSLAND - Mackay - Depth information*Former Notice - 1096(T)/2008 is cancelled*

Maritime Safety Queensland Notice 160(T)/2009 (AA395423)

Available depths as at 16 March 2009:

<i>Remarks</i>	<i>Metres</i>
Entrance Transit (Eastern Bank)	8.6
Entrance Channel	8.3
Swing Basin (Inwards)	8.2
Swing Basin (Outwards)	8.2
* Berth No 1	10.8
* Berth No 3	12.2
* Composite Nos 3/4 Panamax Berth	12.8
* Berth No 4	10.4
* Berth No 5	12.3

* Caution: Lesser depths may occur in berthing boxes but are not considered to have an impact on shipping.

Chart temporarily affected - Aus 250 - AU5250P1**388(T)/2009 AUSTRALIA - QUEENSLAND - Abbot Point - Scientific instruments recovered***Former Notice - 754(T)/2008 is cancelled*

Maritime Safety Queensland Notice 176(T)/2009 (AA396917)

Cancel this notice on receipt.

Chart formerly affected - Aus 255 - Aus 826**389(T)/2009 AUSTRALIA - NORTHERN TERRITORY - Groote Eylandt - Scientific instrument recovered eastwards***Former Notice - 672(T)/2006 is cancelled*

MC JOC DNT 74/05 (AA173719)

Cancel this notice on receipt.

Chart formerly affected - Aus 4720 (INT 720)**390(T)/2009 AUSTRALIA - NORTHERN TERRITORY - Darwin - Obstruction removed; buoys recovered***Former Notice - 408(T)/2008 is cancelled*

Department of Defence (AA327764)

Cancel this notice on receipt.

Chart formerly affected - Aus 24 - Aus 26 - Aus 28

391(T)/2009 AUSTRALIA - WESTERN AUSTRALIA - Muiron Islands - Oil field development northwestwards

Former Notice - 175(T)/2009 is cancelled

Date - Until 20 October 2009

BHP Billiton (AA380398, AA380483, AA380655, AA395702)

Drill rigs *Songa Mercur* and *Ocean Epoch* and support vessel *Jascon 25* are undertaking drilling operations for the Pyrenees oil field; an FPSO will be established in position 21° 32'.47 S 114° 06'.98 E (WGS84 datum).

Subsea production wells will be established as follows:

Ravensworth North	21° 31'.80 S 114° 05'.13 E
Ravensworth South	21° 32'.31 S 114° 05'.09 E
Crosby North	21° 31'.72 S 114° 06'.08 E
Crosby South	21° 32'.69 S 114° 05'.69 E
Stickle	21° 31'.36 S 114° 06'.59 E
Macedon	21° 34'.03 S 114° 10'.30 E
Ravensworth WI	21° 30'.16 S 114° 05'.72 E
Crosby WI	21° 29'.96 S 114° 07'.61 E
Stickle WI	21° 30'.15 S 114° 08'.69 E

Mariners are advised to navigate with caution in the vicinity.

Chart temporarily affected - Aus 328 - Aus 329 - Aus 744 - AU422114

392(P)/2009 AUSTRALIA - WESTERN AUSTRALIA - Geraldton - Point Moore - Light range to be altered

Date - On or about 23 March 2009

Australian Maritime Safety Authority ATH 7/2009 (AA394479)

The range of light K1740 (28° 46'.96 S 114° 34'.76 E (WGS84 datum)) will be altered to *19M*.

Chart which will be affected - Aus 81 - Aus 332 - Aus 333 - Aus 416 - Aus 417 - Aus 751

393(T)/2009 AUSTRALIA - SOUTH AUSTRALIA - Port Adelaide - Wreck

Department for Transport, Energy and Infrastructure SA Notice 17/2009 (AA396376, AA396523)

A wreck marked by an isolated danger light buoy, *Fl(2)6s*, exists in position 34° 47'.75 S 138° 30'.80 E.

Mariners are advised to navigate with caution in the area.

Chart temporarily affected - Aus 130 - Aus 137

394(T)/2009 AUSTRALIA - TASMANIA - River Tamar - Long Reach - Scientific instrument recovered

Former Notice - 563(T)/2008 is cancelled

Marine and Safety Tasmania (AA395422)

Cancel this notice on receipt.

Chart formerly affected - Aus 168

395(T)/2009 AUSTRALIA - TASMANIA - River Tamar - Stephenson's Bend - Beacon re-established

Former Notice - 338(T)/2009 is cancelled

Marine and Safety Tasmania Notice M47/2009 (AA396426)

Cancel this notice on receipt.

Chart formerly affected - Aus 168 - AU5167X8

396(T)/2009 AUSTRALIA - TASMANIA - River Tamar - Kings Wharf - Dredging operations*Date* - Until 30 April 2009

Marine and Safety Tasmania Notice M50/2009 (AA396857)

Dredging operations are in progress in the vicinity of Kings Wharf (41° 25'.72 S 147° 07'.45 E).

A pipeline marked by white buoys extends east to west across the river. The pipeline may only be crossed between the starboard and port pontoons that are lit at night.

Chart temporarily affected - Aus 168 - AU5167X8**397(T)/2009 AUSTRALIA - TASMANIA - Ulverstone - Lights unlit***Date* - Until 25 April 2009

Marine and Safety Tasmania Notice M48/2009 (AA396742)

Leading lights, *F.R. 10m* (41° 09'.20 S 146° 10'.03 E) and *F.R. 7m* (41° 09'.16 S 146° 10'.04 E), are unlit.

Chart temporarily affected - Aus 164 - Aus 799 - AU442146 - AU5164P2**398(T)/2009 AUSTRALIA - VICTORIA - Port Phillip - Rip Bank - Survey operations***Former Notice* - 276(T)/2009 is cancelled*Date* - Until 10 April 2009

Victorian Notice 43(T)/2009 (AA396371)

Towed video surveys of the Rip Bank plateau (38° 17'.65 S 144° 38'.00 E) are in progress.

The surveys will commence at times of predicted slack water and will work around shipping activities in the entrance to Port Phillip.

The vessels *Barwon Pride* and/or *Random Sea* require 15 minutes to clear the channel and can be contacted on VHF Ch 12 or mobile numbers 0417553299 (*Barwon Pride*) and 0419390459 (*Random Sea*).

Chart temporarily affected - Aus 143 - Aus 144 - Aus 158 - Aus 788 - AU439144**399(T)/2009 AUSTRALIA - VICTORIA - Port Phillip - South Channel - Light buoys established**

Victorian Notice 39(T)/2009 (AA395823)

No 2 (38° 17'.72 S 144° 42'.49 E) and No 4 (38° 18'.00 S 144° 43'.83 E) light beacons have been withdrawn. Port lateral light buoys exist as follows:

<i>Position</i>	<i>Remarks</i>
38° 17'.71 S 144° 42'.51 E	<i>Fl.R.3s</i>
38° 17'.98 S 144° 43'.84 E	<i>Fl(2)R.5s</i>

Chart temporarily affected - Aus 143 - Aus 144 - Aus 158 - AU439144

400(P)/2009 AUSTRALIA - VICTORIA - Port Phillip - Rip Bank to South Channel - Lights established*Date* - On or about 23 March 2009

Victorian Notice 40(P)/2009 (AA395840)

Lights have been established as follows:

<i>Position (WGS84 datum)</i>	<i>Characteristic</i>	<i>Sector</i>
38° 16'.31 S 144° 39'.61 E	F.WR.19m 6/4M	white 040.7° - 042.5° (1.75°), red 042.5° - 044.2° (1.75°)
38° 16'.18 S 144° 38'.72 E	F.WRG.21m 6/4M	green 016.5° - 017.5° (1.0°), white 017.5° - 024.5° (7.0°), red 024.5° - 025.5° (1.0°)
38° 16'.53 S 144° 37'.18 E	FAI.WR.3s 12m 6/4M	red 284.2° - 284.6° (0.4°), Al.WR 284.6° - 285.3° (0.7°), white 285.3° - 286.7° (1.4°)

Note: Charting action will be undertaken once the sectors have been validated.**Chart which will be affected - Aus 143 - Aus 144 - Aus 158 - Aus 349 - Aus 788 - AU439144****401(T)/2009 AUSTRALIA - Summer time***Former Notice* - 994(T)/2008 is cancelled

Australian Government (AA355747)

Cancel this notice on receipt.

HYDROGRAPHIC REPORTS

<i>Locality</i>	<i>Report</i>	<i>Ship/Authority</i>	<i>Observer</i>
NSW- Crookhaven River	Depth		K McGregor
PNG- Kavieng	Wreck Nomenclature		D Amon
New Hanover	Wreck Depths		

NAVIGATION WARNINGS

The following radio messages have been received during the period to 27 March 2009. Signal copies of these messages may be destroyed. It is recommended that the reprint of Navigational Warnings should be kept in a file or a book divided into areas. Cancellation should be made on receipt of signals and reprints.

Rigs on location other than those listed in the latest Section III summary are the subject of Radio Navigational Warnings. Rigs in transit will not be the subject of Warnings.

AUSCOAST WARNING

- 069 Cancelled.
 070 Drill rig *Ocean Shield* in position 14° 29'.68 S 128° 30'.58 E. 2.5M clearance requested.
 071 Cancelled.
 072 Drill rig *Sedco 703* in position 13° 37'.00 S 122° 18'.00 E. 2.5M clearance requested.
 073 Cancelled.
 074 Cancelled.
 075 Special purpose vessel *Southern Supporter* conducting underwater operations in area 38° 27'.50 S to 39° 20'.00 S and 146° 20'.00 E to 147° 08'.50 E. 2.5M clearance requested.
 076 Special purpose vessel *Geo Atlantic* conducting seismic survey towing ten 3-6M cable in area 11° 00'.00 S to 11° 55'.00 S and 124° 24'.00 E to 125° 05'.00 E. 5M clearance requested.
 077 Point Moore light K1740 (28° 46'.96 S 114° 34'.77 E) altered to FI(2)10s 19M.
 078 Varzin Passage C4 buoy (10° 31'.52 S 141° 56'.79 E) topmark reported missing.
 079 Weipa DGPS station ALRS Vol(2) (12° 39'.22 S 141° 51'.61 E) temporarily discontinued.

NAVAREA X WARNINGS

Nil.

Navigational warnings in force as at 270001UTC MAR 09.**Auscoast**

027 044 048 056 058 059 060 061 063 064 066 067 068 070 072 075 076 077 078 079

Navarea X**Summary of mobile drilling rigs as at 270001UTC MAR 09.**

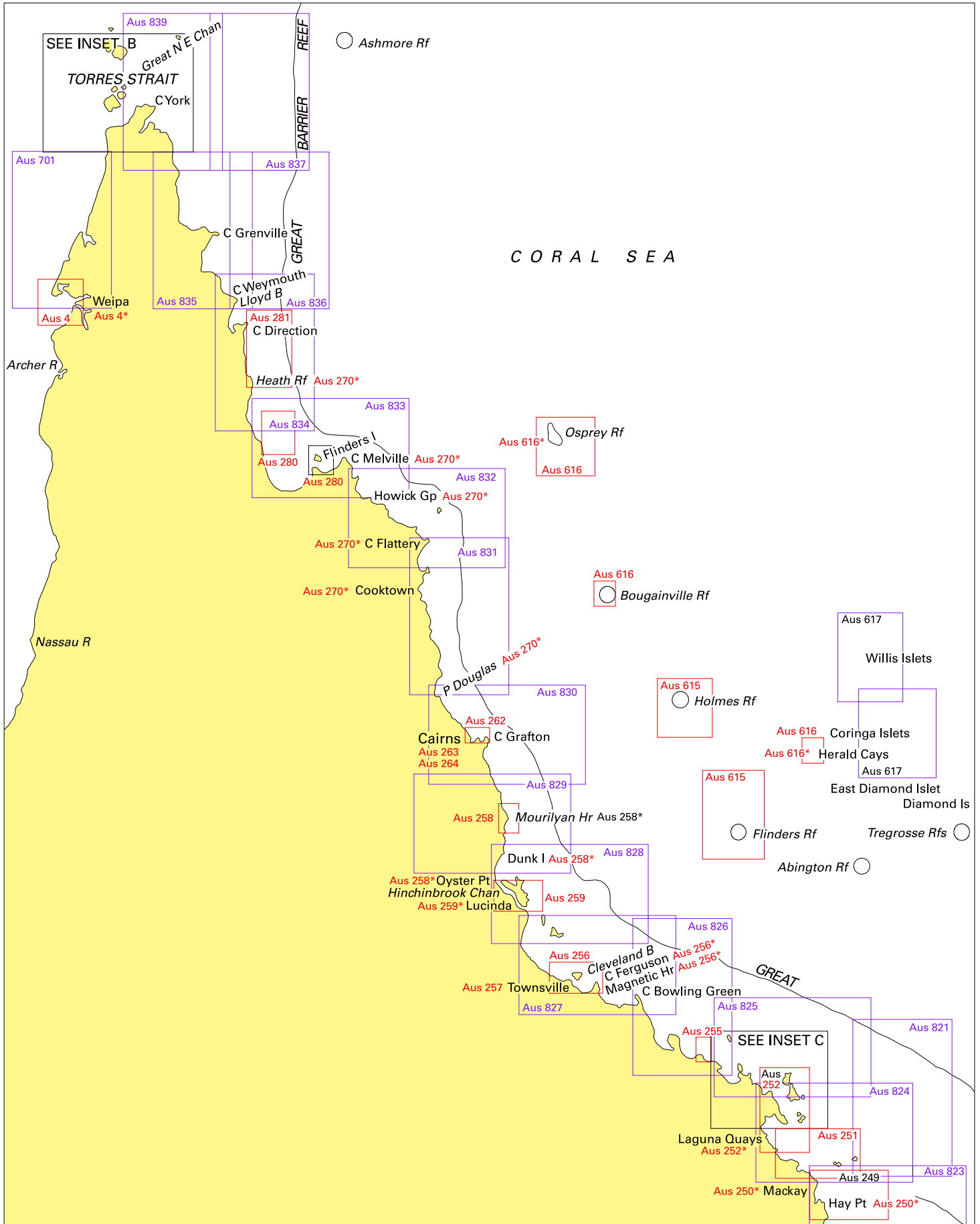
<i>Name</i>	<i>Position</i>
Ocean Shield	14° 29'.68 S 128° 30'.58 E
West Atlas	12° 40'.30 S 124° 32'.40 E
Songa Venus	13° 40'.40 S 123° 20'.61 E
Sedco 703	13° 37'.00 S 122° 18'.00 E
Ocean Bounty	19° 51'.19 S 115° 39'.23 E
Stena Clyde	20° 00'.36 S 115° 09'.06 E
Ensco 106	20° 26'.83 S 115° 07'.20 E
Nan Hai 6	21° 26'.02 S 114° 01'.60 E
Ocean Epoch	21° 31'.38 S 114° 06'.59 E
Songa Mercur	21° 32'.18 S 114° 05'.03 E.
Atwood Eagle	19° 40'.10 S 112° 47'.45 E

NAVAREA XIV WARNINGS

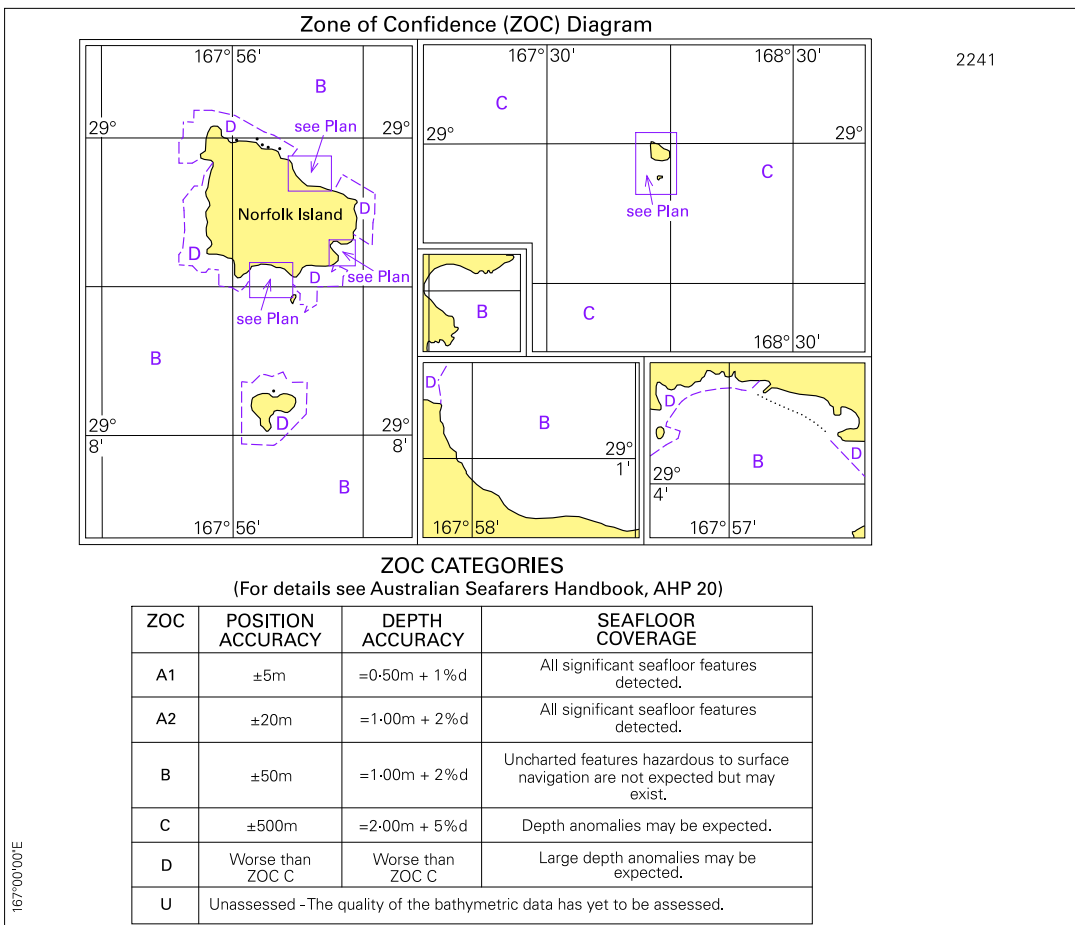
Nil.

Navarea XIV warnings in force as at 270001UTC MAR 09.

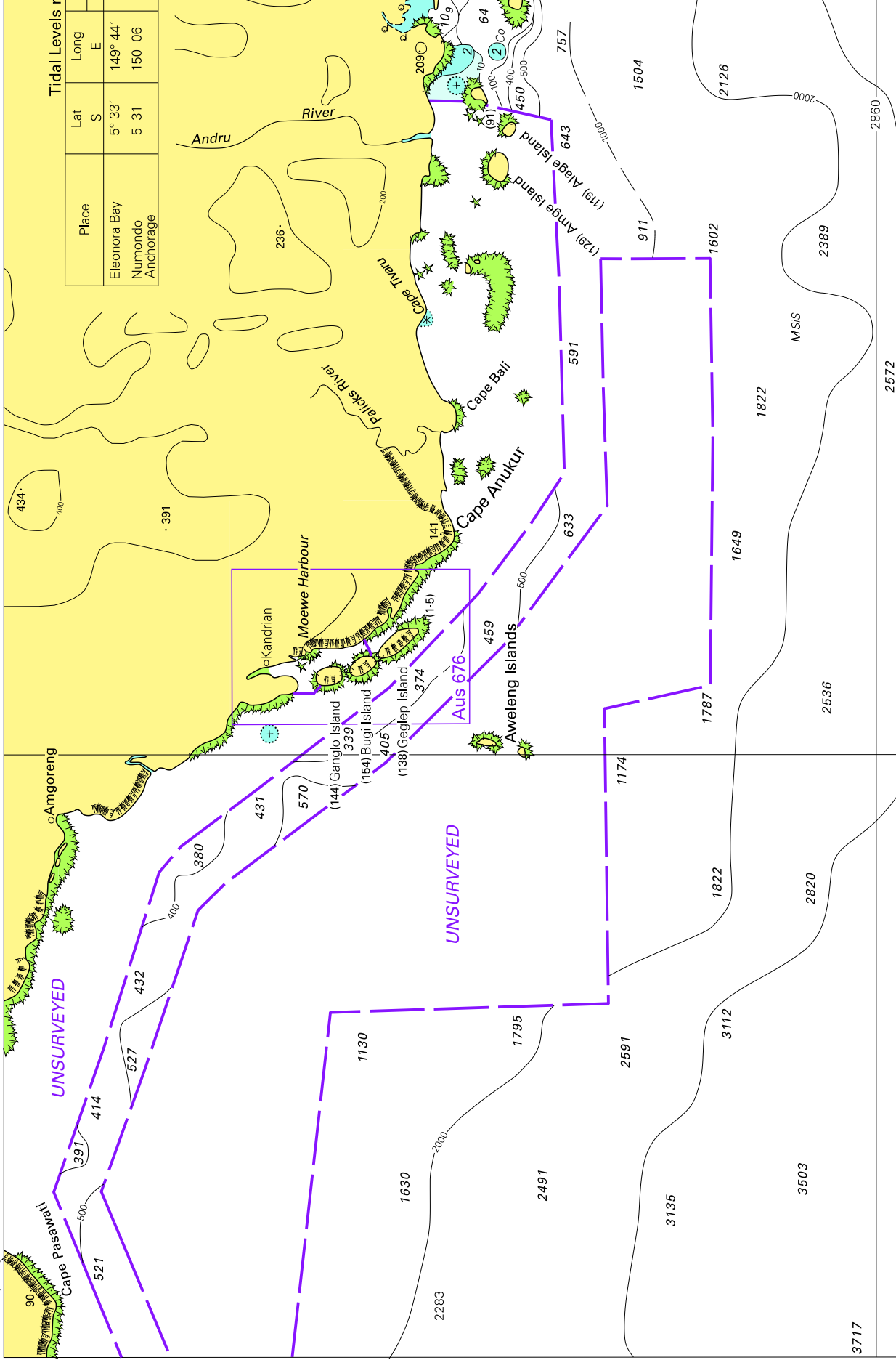
2008 085
2009 002 003



To accompany Australian Notice to Mariners 356/2009

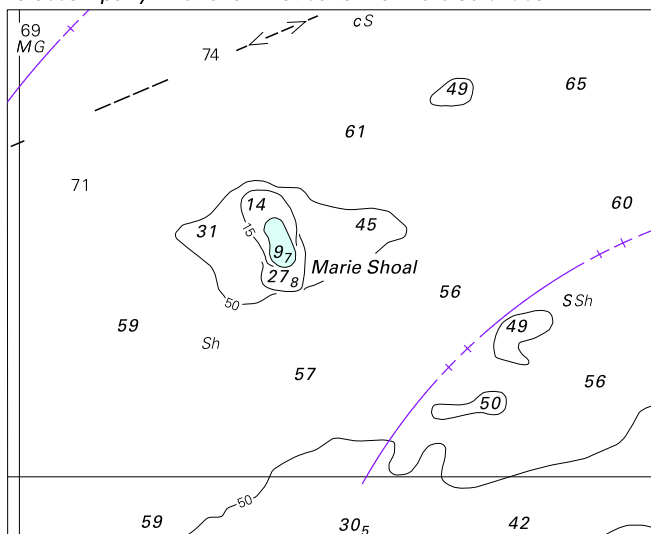


To accompany Australian Notice to Mariners 361/2009



Tidal Levels		Lat	Long
Place	Eleonora Bay	S 5° 33'	E 149° 44'
	Numondo Anchorage	S 5° 31'	E 150° 06'

To accompany Australian Notice to Mariners 364/2009

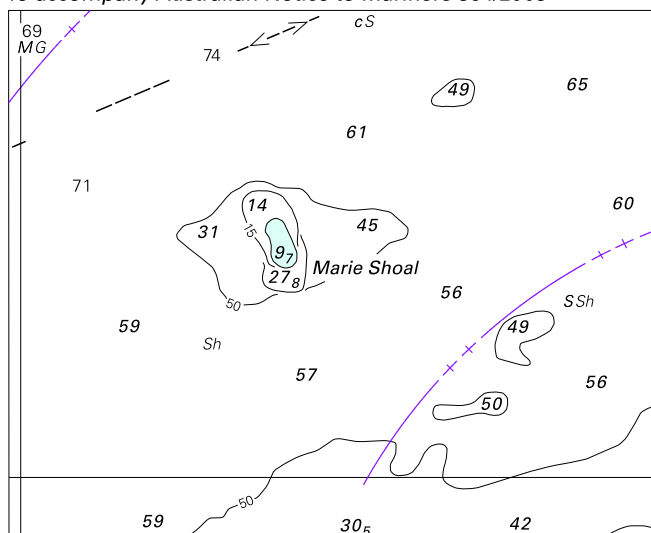


© Commonwealth of Australia 2009

Block for chart Aus 309

(86.4 x 69.6mm)

To accompany Australian Notice to Mariners 364/2009

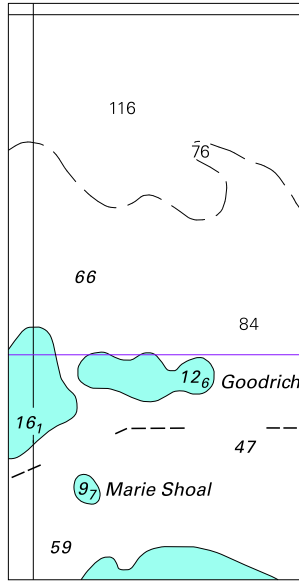


© Commonwealth of Australia 2009

Block for chart Aus 310

(86.4 x 69.6mm)

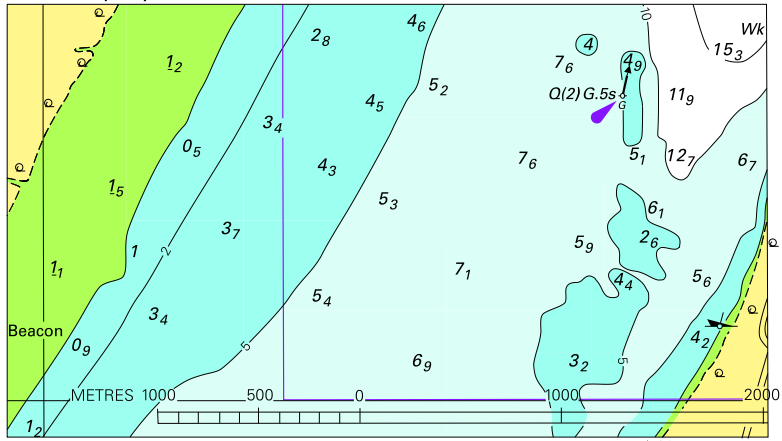
To accompany Australian Notice to Mariners 364/2009



© Commonwealth of Australia 2009
Block for chart Aus 4721

(38.7 x 76.2mm)

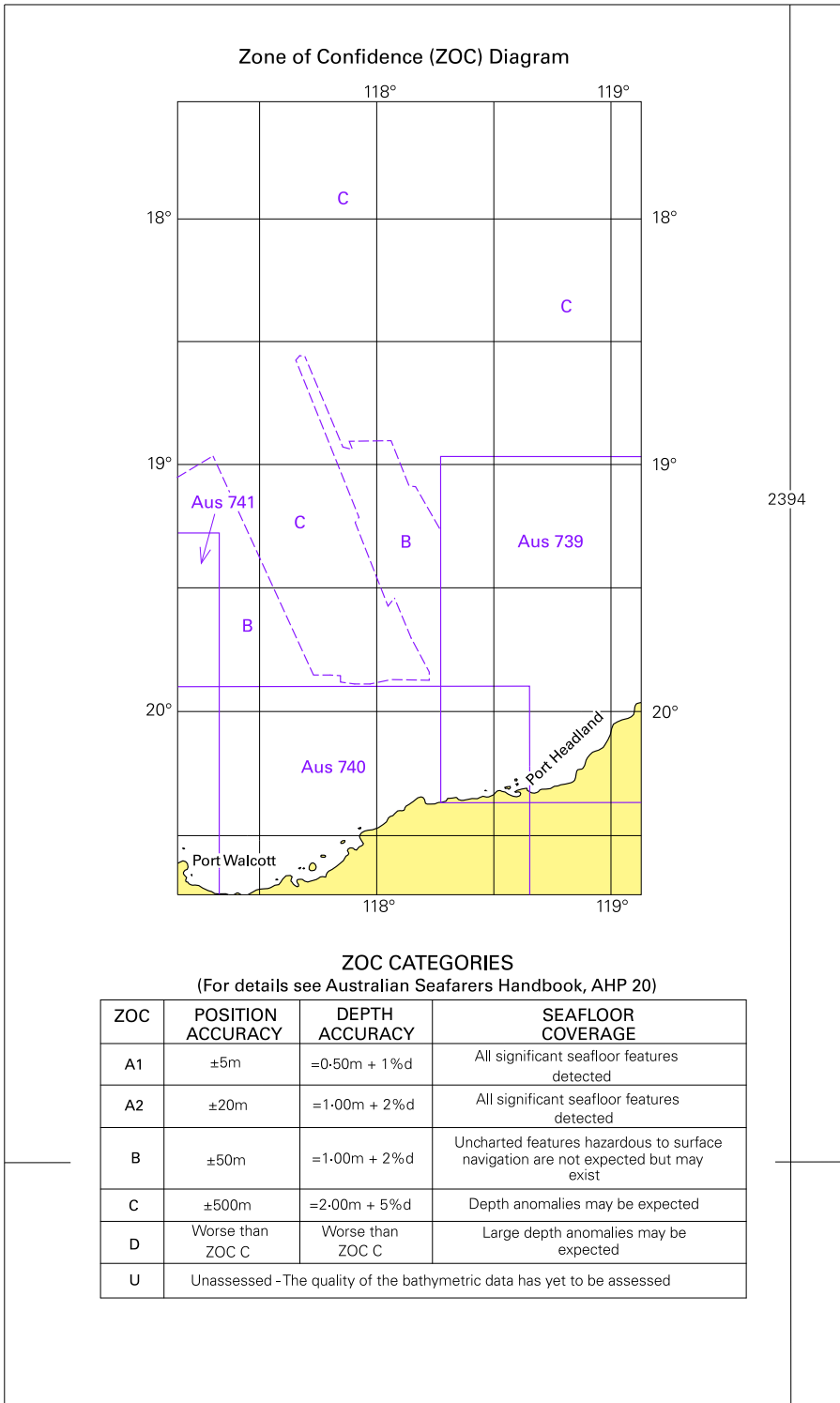
To accompany Australian Notice to Mariners 366/2009



Block for chart Aus 32 © Commonwealth of Australia 2009

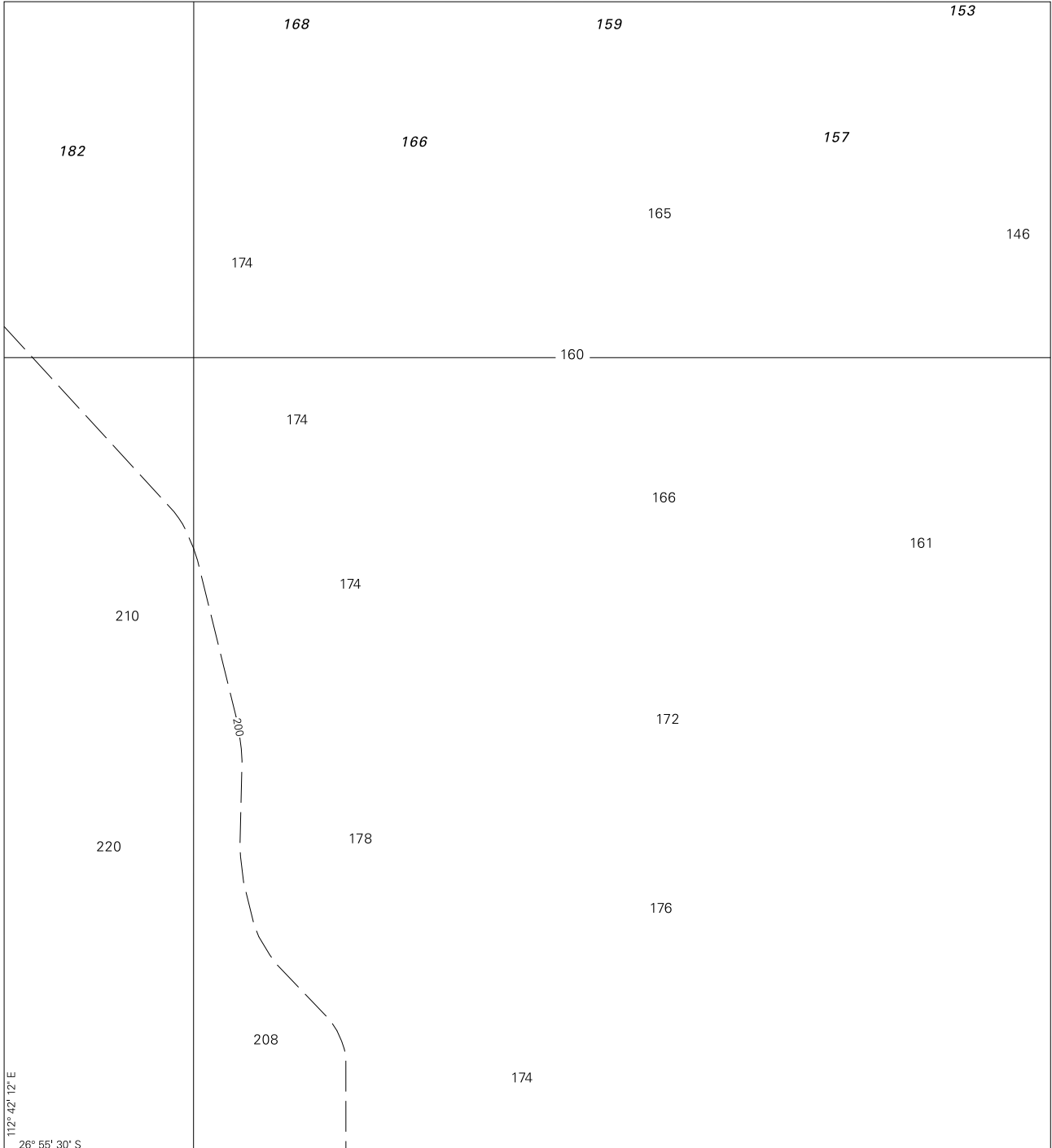
(100.6 x 57.2mm)

To accompany Australian Notice to Mariners 367/2009



2394

To accompany Australian Notice to Mariners 369/2009

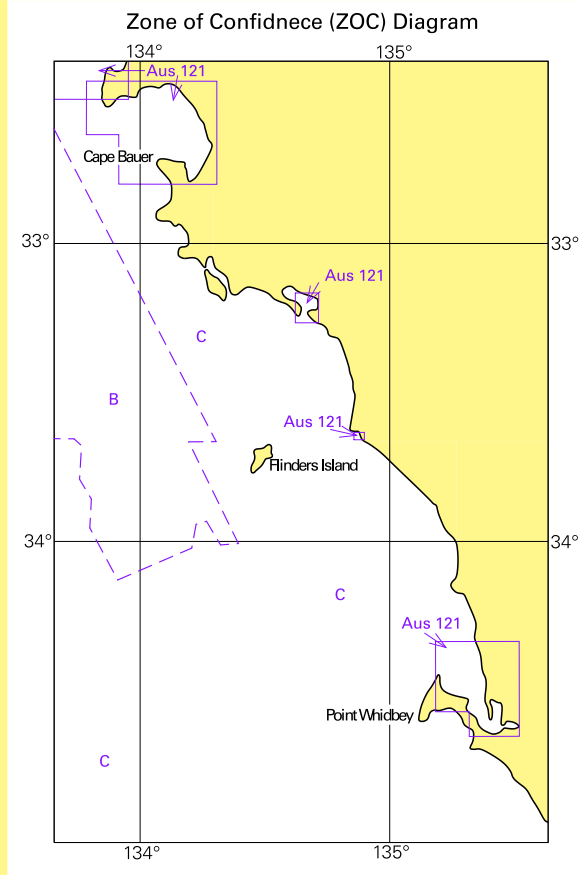


Block for chart Aus 749

© Commonwealth of Australia 2009

(170 x 186.7mm)

To accompany Australian Notice to Mariners 372/2009



ZOC CATEGORIES

(For details see Australian Seafarers Handbook, AHP 20)

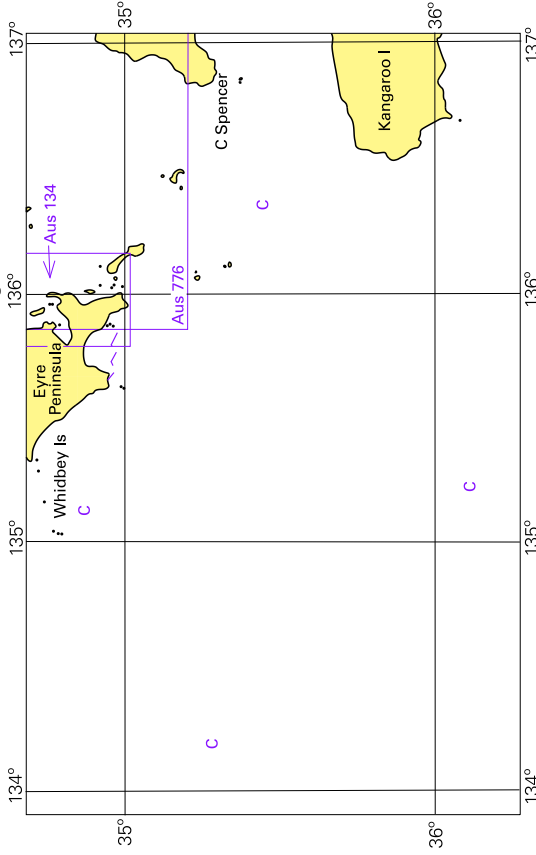
ZOC	POSITION ACCURACY	DEPTH ACCURACY	SEAFLOOR COVERAGE
A1	±5m	=0.50m + 1% d	All significant seafloor features detected
A2	±20m	=1.00m + 2% d	All significant seafloor features detected
B	±50m	=1.00m + 2% d	Uncharted features hazardous to surface navigation are not expected but may exist
C	±500m	=2.00m + 5% d	Depth anomalies may be expected
D	Worse than ZOC C	Worse than ZOC C	Large depth anomalies may be expected
U	Unassessed - The quality of the bathymetric data has yet to be assessed		



To accompany Australian Notice to Mariners 373/2009

if surface floats associated may be encountered.

Zone of Confidence (ZOC) Diagram



ZOC CATEGORIES
(For details see Australian Seafarers Handbook, AHP 20)

ZOC	POSITION ACCURACY	DEPTH ACCURACY	SEAFLOOR COVERAGE
A1	±5m	=0.50m + 1% <i>d</i>	All significant seafloor features detected
A2	±20m	=1.00m + 2% <i>d</i>	All significant seafloor features detected
B	±50m	=1.00m + 2% <i>d</i>	Uncharted features hazardous to surface navigation are not expected but may exist
C	±500m	=2.00m + 5% <i>d</i>	Depth anomalies may be expected
D	Worse than ZOC C	Worse than ZOC C	Large depth anomalies may be expected
U	Unassessed - The quality of the bathymetric data has yet to be assessed		

Block for chart Aus 343

© Commonwealth of Australia 2009

(240.1 x 99.2m)