



Australian Notices to Mariners are the authority for correcting Australian Charts and Publications

# AUSTRALIAN NOTICES TO MARINERS

Notices 279 - 347 

Published fortnightly by the Australian Hydrographic Service

Commodore R. NAIRN RAN  
Hydrographer of Australia

- 
- SECTIONS.**
- I. **Australian Notices to Mariners, including blocks and notes.**
  - II. **Hydrographic Reports.**
  - III. **Navigational Warnings.**

For Notices affecting Admiralty List of Lights and Fog Signals; List of Radio Signals; and Sailing Directions see **British Notices to Mariners.**

---

*The substance of these notices should be inserted on the charts affected.*

*Bearings are referred to the true compass and are reckoned clockwise from North; those relating to lights are given as seen by an observer from seaward. Positions quoted in permanent notices relate to the horizontal datum for the chart(s). When preliminary or temporary notices affect multiple charts, positions will be provided in relation to only one horizontal datum and that datum will be specified. When the multiple charts do not have a common horizontal datum, mariners will be required to adjust the position(s) for those charts not on the specified datum. The range quoted for a light is its nominal range. Depths are with reference to the chart datum of each chart. Heights are above mean high water springs or mean higher high water, as appropriate.*

*The capital letter (P) or (T) after the number of any notice denotes a preliminary or temporary notice respectively, which are contained separately at the end of the permanent notices. A star (\*) adjacent to the number of a notice indicates that the notice is based on original information.*

---

**Mariners are particularly requested to notify the AUSTRALIAN HYDROGRAPHIC SERVICE, Locked Bag 8801 Wollongong, NSW 2500 (Fax 02-4223 6599, e-mail [Hydro.NTM@defence.gov.au](mailto:Hydro.NTM@defence.gov.au) or, alternatively by filling in and submitting the [Hydrographic Notes](#) forms located on the web site – [www.hydro.gov.au](http://www.hydro.gov.au)), immediately on the discovery of new dangers or suspected dangers to navigation. For changes or defects in aids to navigation notify AusSAR (Fax 02-6230 6868 or email [rccaus@amsa.gov.au](mailto:rccaus@amsa.gov.au)).**

---

Copies of Australian notices are available free of charge from the Australian Hydrographic Service (AHS) website ([www.hydro.gov.au](http://www.hydro.gov.au)) and through the eNotices (email) service ([www.hydro.gov.au/enotices/enotices.htm](http://www.hydro.gov.au/enotices/enotices.htm)).

Individual Notices may be copied for the purpose of inserting Notice substance on official charts and publications. Paper copies may be printed by chart agents and distributed to customers on a cost recovery basis. Participating chart agents are listed on the AHS website as providing a 'Paper Notices to Mariners' service ([www.hydro.gov.au/prodserv/distributors/distributors.htm](http://www.hydro.gov.au/prodserv/distributors/distributors.htm)). Copies of the notices may not be sold for profit without prior written agreement.

---

## IMPORTANT NOTICE

This edition of Notices to Mariners includes all significant information affecting AHS products which the AHS has become aware of since the last edition. All reasonable efforts have been made to ensure the accuracy and completeness of the information, including third party information, on which these updates are based. The AHS regards third parties from which it receives information as reliable, however the AHS cannot verify all such information and errors may therefore exist. The AHS does not accept liability for errors in third party information.

---

© Commonwealth of Australia 2009

This work is copyright. Apart from any use permitted under the Copyright Act 1968, no part may be reproduced by any process, adapted, communicated or commercially exploited without prior written permission from The Commonwealth represented by the Australian Hydrographic Service.

## NUMERICAL INDEX OF NOTICES TO MARINERS

### Edition No 5

Notices	Aus Chart, INT Chart, ENC Cell
279.....	Aus 221, 669, 716, AU335133
280.....	Aus 806, 807
281.....	Aus 806, 807
282.....	Aus 204, 217
283.....	Aus 204, 216
284.....	Aus 209
285.....	Aus 811
286.....	Aus 236
287.....	Aus 245
288.....	Aus 249, 250
289.....	Aus 251, 823, 824
290.....	Aus 253
291.....	Aus 821, 4621, INT 621, AX 4621F
292.....	Aus 256
293.....	Aus 259
294.....	Aus 831
295.....	Aus 376, 377, 840, AX 60377
296.....	Aus 383
297.....	Aus 666
298.....	Aus 296
299.....	Aus 308
300.....	Aus 18
301.....	Aus 21
302.....	Aus 4721, INT 721, AX 4721F
303.....	Aus 414
304.....	Aus 320
305.....	Aus 606, 607
306.....	Aus 328, 743
307.....	Aus 749
308.....	Aus 116
309.....	Aus 758
310.....	Aus 109, 110
311.....	Aus 4727, INT 727
312.....	Aus 137
313.....	Aus 171
314.....	Aus 148, 802
315.....	Aus 805
316(T).....	Aus 193, 807, 808, AX 0808E, 60193, 70193, AU5XX193
317(T).....	Aus 194, AU5XX194
318(T).....	Aus 198, 199, AU5198X9
319(T).....	Aus 207, 208, AU5XX208
320(T).....	Aus 236, AU5237X8
321(T).....	Aus 236, AU5237X8
322(T).....	Aus 236, AU5237X8
323(T).....	Aus 364, 365, 424
324(T).....	Aus 235
325(T).....	Aus 244, 245, 246, AU5244X5
326(T).....	Aus 247, 819, AU424150, 5247P1
327(T).....	Aus 260, 367, 822, AX 60260, AU423150, 5261P1
328(T).....	Aus 249, 250, 823, AU422149, 5250P2
329(T).....	Aus 252, 253, 824, AU421149
330(T).....	Aus 301, AU413141
331(T).....	Aus 52, 53, 54
332(T).....	Aus 52, 53, 54
333(T).....	Aus 109, 110, 118, AU5XX109
334(T).....	Aus 342, 343, 345, 346, 444, AX 0343E, AU336135
335(T).....	Aus 125, 780, 781
336(T).....	Aus 140
337(T).....	Aus 171, 796
338(T).....	Aus 168, AU5167X8
339(T).....	Aus 164, AU5164P1
340(T).....	Aus 164, AU5164P2
341(T).....	Aus 143, 144, 158, 349, 422, 487, 788, AU439144
342(T).....	Aus 143, 144, 158, AU439144
343(T).....	Aus 154, AU5XX154
344(T).....	Aus 143, 154, 155, AU438144, AU5XX154
345(T).....	Aus 143, 155, AU438144, 5155P4
346(T).....	Aus 150, 151, 152, AU5152P1
347(T).....	Aus 357A, 422, 423, 487, AU439148

I  
**NUMERICAL INDEX OF CHARTS AFFECTED**

**Edition No 5**

Aus Chart	Notices	Aus Chart	Notices
Aus 18.....	300	Aus 349 .....	341(P)
Aus 21.....	301	Aus 357A .....	347(T)
Aus 52.....	331(T), 332(T)	Aus 364 .....	323(T)
Aus 53.....	331(T), 332(T)	Aus 365 .....	323(T)
Aus 54.....	331(T), 332(T)	Aus 367 .....	327(T)
Aus 109.....	310, 333(T)	Aus 376 .....	295
Aus 110.....	310, 333(T)	Aus 377 .....	295
Aus 116.....	308	Aus 383 .....	296
Aus 118.....	333(T)	Aus 414 .....	303
Aus 125.....	335(T)	Aus 422 .....	341(P), 347(T)
Aus 137.....	312	Aus 423 .....	347(T)
Aus 140.....	336(T)	Aus 424 .....	323(T)
Aus 143.....	341(P), 342(P), 344(T), 345(T)	Aus 444 .....	334(T)
Aus 144.....	341(P), 342(P)	Aus 487 .....	341(P), 347(T)
Aus 148.....	314	Aus 606 .....	305
Aus 150.....	346(T)	Aus 607 .....	305
Aus 151.....	346(T)	Aus 666 .....	297
Aus 152.....	346(T)	Aus 669 .....	279
Aus 154.....	343(T), 344(T)	Aus 716 .....	279
Aus 155.....	344(T), 345(T)	Aus 743 .....	306
Aus 158.....	341(P), 342(P)	Aus 749 .....	307
Aus 164.....	339(T), 340(T)	Aus 758 .....	309
Aus 168.....	338(T)	Aus 780 .....	335(T)
Aus 171.....	313, 337(T)	Aus 781 .....	335(T)
Aus 193.....	316(T)	Aus 788 .....	341(P)
Aus 194.....	317(T)	Aus 796 .....	337(T)
Aus 198.....	318(T)	Aus 802 .....	314
Aus 199.....	318(T)	Aus 805 .....	315
Aus 204.....	282, 283	Aus 806 .....	280, 281
Aus 207.....	319(T)	Aus 807 .....	280, 281, 316(T)
Aus 208.....	319(T)	Aus 808 .....	316(T)
Aus 209.....	284	Aus 811 .....	285
Aus 216.....	283	Aus 819 .....	326(T)
Aus 217.....	282	Aus 821 .....	291
Aus 221.....	279	Aus 822 .....	327(T)
Aus 235.....	324(T)	Aus 823 .....	289, 328(T)
Aus 236.....	286, 320(T), 321(T), 322(T)	Aus 824 .....	289, 329(T)
Aus 244.....	325(T)	Aus 831 .....	294
Aus 245.....	287, 325(T)	Aus 840 .....	295
Aus 246.....	325(T)	Aus 4621 .....	291
Aus 247.....	326(T)	Aus 4721 .....	302
Aus 249.....	288, 328(T)	Aus 4727 .....	311
Aus 250.....	288, 328(T)	AX 0343E .....	334(T)
Aus 251.....	289	AX 0808E .....	316(T)
Aus 252.....	329(T)	AX 4621F.....	291
Aus 253.....	290, 329(T)	AX 4721F.....	302
Aus 256.....	292	AX 60193.....	316(T)
Aus 259.....	293	AX 60260.....	327(T)
Aus 260.....	327(T)	AX 60377.....	295
Aus 296.....	298	AX 70193.....	316(T)
Aus 301.....	330(T)		
Aus 308.....	299		
Aus 320.....	304		
Aus 328.....	306	INT Chart	Notices
Aus 342.....	334(T)	INT 621 .....	291
Aus 343.....	334(T)	INT 721 .....	302
Aus 345.....	334(T)	INT 727 .....	311
Aus 346.....	334(T)		

ENC Cell	Notices
AU335133 .....	279
AU336135 .....	334(T)
AU413141 .....	330(T)
AU421149 .....	329(T)
AU422149 .....	328(T)
AU423150 .....	327(T)
AU424150 .....	326(T)
AU438144 .....	344(T), 345(T)
AU439144 .....	341(P), 342(P)
AU439148 .....	347(T)
AU5XX109 .....	333(T)
AU5152P1 .....	346(T)
AU5XX154 .....	343(T), 344(T)
AU5155P4 .....	345(T)
AU5164P1 .....	339(T)
AU5164P2 .....	340(T)
AU5167X8 .....	338(T)
AU5XX193 .....	316(T)
AU5XX194 .....	317(T)
AU5198X9 .....	318(T)
AU5XX208 .....	319(T)
AU5237X8 .....	320(T), 321(T), 322(T)
AU5244X5 .....	325(T)
AU5247P1 .....	326(T)
AU5250P2 .....	328(T)
AU5261P1 .....	327(T)

**279 AUSTRALIA - Product**

Australian Hydrographic Service (AA389695, AA392508)

**New Electronic Navigation Chart (Seafarer ENC)**

Cell Name	Released	Title
AU335133	March 2009	South Australia - Great Australian Bight - Cell 8

**New Chart to be published shortly**

Chart	Title	Scale	Expected Publication Date	Expected Stock Availability
Aus 221	Australia - East Coast - New South Wales - Solitary Islands	1:50 000	13 March 2009	20 April 2009
Aus 669	Papua New Guinea - New Ireland - North Coast - Plans in Papua New Guinea (Sheet 11)		13 March 2009	20 April 2009
	Plans:			
	Tabar Islands	1:75 000		
	Fangalawa Bay	1:25 000		
	Pigibut Bay	1:5 000		

**New Edition to be published shortly**

Chart	Title	Scale	Expected Publication Date	Expected Stock Availability
Aus 716	Australia - North Coast - Northern Territory - Gugari Rip to Cadell Strait including Arnhem Bay	1:150 000	13 March 2009	20 April 2009

For further details refer to the AHS website at [www.hydro.gov.au](http://www.hydro.gov.au) for new edition and new chart stock arrival information.

When placing orders with a chart agent, mariners should advise whether their order pertains to the current edition or the new edition.

**280\* AUSTRALIA - NEW SOUTH WALES - Cape Howe to Jervis Bay - Legends**

Australian Hydrographic Service (AA389788)

**Aus 806 [164/2009]**

Insert	legend, EAST AUSTRALIAN COAST CURRENT Up to about 4kn (see Note), centred on	37° 13'.0 S	150° 26'.0 E
	legend, EAST AUSTRALIAN COAST CURRENT Up to about 4kn (see Note), centred on	36° 24'.0 S	150° 30'.0 E

**Aus 807 [NC 21/11/2008]**

Insert	legend, EAST AUSTRALIAN COAST CURRENT Up to about 4kn (see Note), centred on	36° 11'.0 S	150° 33'.0 E
	legend, EAST AUSTRALIAN COAST CURRENT Up to about 4kn (see Note), centred on	35° 20'.0 S	150° 57'.0 E

**281\* AUSTRALIA - NEW SOUTH WALES - Montague Island to Jervis Bay - Depth, wreck**

Australian Hydrographic Service (AA363855, AA364445), Department of the Environment and Heritage (AA363674), UKHO (AA389797)

**Aus 806 [280/2009]**

Substitute	depth, 20 <sub>2</sub> m, for depth 25 <sub>7</sub> m	36° 15'.5 S	150° 12'.3 E
------------	---	-------------	--------------

**Aus 807 [280/2009]**

Substitute	depth, 20 <sub>2</sub> m, for depth 25 <sub>7</sub> m	36° 15'.5 S	150° 12'.3 E
------------	---	-------------	--------------

Move	wreck to	35° 00'.8 S	150° 43'.9 E
		35° 00'.89 S	150° 44'.32 E

**282\* AUSTRALIA - NEW SOUTH WALES - Hawkesbury River - Coal and Candle Creek - Light buoys**  
NSW Maritime (AA387815, AA387816)

**Aus 204 [685/2008]**

Insert	starboard lateral spar light buoy, <i>Fl.G.3s</i> , without topmark	33° 37'.756 S	151° 13'.062 E
	starboard lateral spar light buoy, <i>Fl.G.3s</i> , without topmark	33° 38'.221 S	151° 13'.726 E
	port lateral spar light buoy, <i>Fl.R.3s</i> , without topmark	33° 37'.938 S	151° 13'.317 E
Delete	depth, 19 <sub>5</sub> m	33° 37'.95 S	151° 13'.28 E

**Aus 217 [684/2006]**

Insert	starboard lateral spar light buoy, <i>Fl.G.3s</i> , without topmark	33° 37'.756 S	151° 13'.062 E
	starboard lateral spar light buoy, <i>Fl.G.3s</i> , without topmark	33° 38'.221 S	151° 13'.726 E
	port lateral spar light buoy, <i>Fl.R.3s</i> , without topmark	33° 37'.938 S	151° 13'.317 E
Delete	depth, 13 <sub>9</sub> m	33° 38'.20 S	151° 13'.73 E
	depth, 13 <sub>8</sub> m	33° 37'.73 S	151° 13'.06 E

**283\* AUSTRALIA - NEW SOUTH WALES - Broken Bay - Wagstaff - Depths; nav aids**

*Former Notice - 610(T)/2007 is cancelled*  
NSW Maritime (DHDB 1158122)

**Aus 204 [282/2009]**

Amend	light to <i>Fl.G.3s</i>	33° 32'.00 S	151° 20'.25 E
-------	-------------------------	--------------	---------------

**Aus 216 [635/2007]**

Insert	accompanying block	33° 31'.5 S	151° 20'.2 E
--------	--------------------	-------------	--------------

**284\* AUSTRALIA - NEW SOUTH WALES - Port Stephens - Corrie Island - Light**  
UKHO (AA386616)

**Aus 209 [237/2009]**

Insert	a dashed line in a direction 113.2° for a distance of 5180m, thence a continuous line for 6770m, with legend <i>Dir 293.2°</i> emanating from light	32° 41'.02 S	152° 08'.13 E
Substitute	light, <i>Iso.WRG.4s 17m 8/6M</i> for light beacon	32° 41'.02 S	152° 08'.13 E
Move	legend, 267.3°	32° 42'.12 S	152° 11'.32 E
	to	32° 42'.13 S	152° 11'.06 E
Delete	continuous line, between	32° 42'.13 S	152° 11'.39 E
		32° 42'.14 S	152° 11'.19 E

**285\* AUSTRALIA - NEW SOUTH WALES - Tacking Point - Depth eastwards**

Geoscience Australia (GA2440, AA391128)

**Aus 811 [39/2009]**

Insert	depth, 278m, enclosed by contour	31° 31'.09 S	153° 14'.40 E
--------	----------------------------------	--------------	---------------

**286\* AUSTRALIA - QUEENSLAND - Moreton Bay - Peel Island - Light buoy**

Maritime Safety Queensland Notice 130/2009 (AA390051)

**Aus 236 [238/2009]**

Move	light buoy	27° 30'.3 S	153° 22'.6 E
	to	27° 30'.33 S	153° 22'.51 E

**287\* AUSTRALIA - QUEENSLAND - Gladstone - South Trees Point - Jetty; maintained depth limit**

UKHO (AA389784)

**Aus 245 [184/2009]**

Insert	line, between	23° 51'.281 S	151° 19'.322 E
		23° 51'.303 S	151° 19'.361 E
	dashed line, between	23° 51'.473 S	151° 20'.125 E
		23° 51'.473 S	151° 19'.925 E

**288\* AUSTRALIA - QUEENSLAND - Slade Island - Light buoy**

Maritime Safety Queensland Notice 97/2009 (AA386115, AA388292)

**Aus 249 [140/2009]**

Move	light buoy	21° 06'.1 S	149° 15'.5 E
	to	21° 06'.15 S	149° 15'.51 E

**Aus 250 (plan, Mackay Harbour) [140/2009]**

Move	light buoy	21° 06'.10 S	149° 15'.45 E
	to	21° 06'.145 S	149° 15'.510 E

**289\* AUSTRALIA - QUEENSLAND - Heskett Rock - Light beacon**

Maritime Safety Queensland Notice 119/2009 (AA387582)

**Aus 251 [432/2008]**

Insert	light beacon, Q(6)+LFl. 15s, with south cardinal topmark	20° 56'.19 S	149° 28'.97 E
--------	--	--------------	---------------

**Aus 823 [240/2009]**

Insert	light, Q(6)+LFl. 15s	20° 56'.19 S	149° 28'.97 E
--------	----------------------	--------------	---------------

**Aus 824 [240/2009]**

Insert	light beacon, Q(6)+LFl. 15s, with south cardinal topmark	20° 56'.19 S	149° 28'.97 E
--------	--	--------------	---------------

**290\* AUSTRALIA - QUEENSLAND - Surprise Rock - Depths**

Maritime Safety Queensland (DHDB 1167305)

**Aus 253 [1069/2008]**

Insert	accompanying block	20° 21'.0 S	149° 02'.5 E
--------	--------------------	-------------	--------------

**291\* AUSTRALIA - QUEENSLAND - Hydrographers Passage - Depth**  
Australian Hydrographic Service (AA387591, AA387590)

<b>Aus 821</b> [240/2009]			
Insert	depth, 8 <sub>2</sub> m, enclosed by contour	20° 16'.87 S	150° 25'.21 E
Delete	depth, 10 <sub>5</sub> m, and enclosing contour	20° 16'.9 S	150° 25'.5 E
<b>Aus 4621 (INT 621)</b> [1121/2008]			
Insert	depth, 8 <sub>2</sub> m, enclosed by contour	20° 16'.9 S	150° 25'.2 E
Delete	depth, 10 <sub>5</sub> m, and enclosing contour	20° 17'.0 S	150° 25'.0 E
<b>AX 4621F</b> [NC 26/9/2008]			
Insert	depth, 8 <sub>2</sub> m, enclosed by contour	20° 16'.9 S	150° 25'.2 E
Delete	depth, 10 <sub>5</sub> m, and enclosing contour	20° 17'.0 S	150° 25'.0 E

**292\* AUSTRALIA - QUEENSLAND - Cleveland Bay - ZOC diagram**  
UKHO (AA387013)

<b>Aus 256</b> [241/2009]			
Substitute	accompanying ZOC diagram	19° 17'.5 S	146° 45'.0 E

**293\* AUSTRALIA - QUEENSLAND - Lucinda - Depths**  
Maritime Safety Queensland (DHDB 1185143)

<b>Aus 259 (plan, Port of Lucinda)</b> [907/2007]			
Insert	accompanying block	18° 31'.0 S	146° 20'.0 E

**294\* AUSTRALIA - QUEENSLAND - St Crispin Reef - Depth**  
Australian Hydrographic Service (AA390234), C Woods (AA390220)

<b>Aus 831</b> [242/2009]			
Insert	accompanying block	16° 07'.0 S	145° 47'.0 E

**295\* AUSTRALIA - TORRES STRAIT - Dalrymple Island - Light sector**  
Australian Maritime Safety Authority ATH 4/2009 (AA390089)

<b>Aus 376</b> [143/2009]			
Delete	faint sector emanating from light	9° 37'.0 S	143° 17'.8 E
<b>Aus 377</b> [902/2008]			
Delete	faint sector emanating from light	9° 37'.0 S	143° 17'.8 E
<b>Aus 840</b> [143/2009]			
Delete	faint sector emanating from light	9° 36'.8 S	143° 17'.8 E
<b>AX 60377</b> [232/2008]			
Delete	faint sector emanating from light	9° 36'.8 S	143° 17'.8 E

**296\* PAPUA NEW GUINEA - Bonvouloir Islands to Woodlark Island - Chart limits; legends**

Australian Hydrographic Service (AA390504)

**Aus 383 [630/2008]**

Delete	magenta limits, with legend Aus 630, centred on magenta legend, Adjoining Chart Aus 382, in S border	10° 19'.0 S	151° 34'.0 E
	magenta legend, Adjoining Chart Aus 381, in S border	10° 27'.0 S	152° 48'.0 E
	magenta legend, Adjoining Chart Aus 381, in W border	10° 27'.0 S	151° 55'.0 E
		10° 02'.0 S	151° 30'.0 E

**297\* PAPUA NEW GUINEA - Kavieng Harbour - Wrecks**HMAS *Mermaid* (AA386754)**Aus 666 [1070/2008]**

Insert	stranded wreck	2° 34'.48 S	150° 46'.87 E
	stranded wreck	2° 34'.72 S	150° 46'.83 E

**Aus 666 (plan, Kavieng Harbour)**

Insert	stranded wreck	2° 34'.723 S	150° 46'.825 E
	stranded wreck	2° 34'.477 S	150° 46'.872 E
Delete	jetty, centred on	2° 34'.48 S	150° 46'.87 E

**298\* AUSTRALIA - TORRES STRAIT - Goods Island to Proudfoot Shoal - ZOC diagram; chart notes; legends**

Australian Hydrographic Service (AA318722)

**Aus 296 [51/2009]**

Substitute	accompanying ZOC diagram for reliability diagram	10° 23'.0 S	141° 44'.0 E
Amend	legend to <i>UNSURVEYED</i>	10° 21'.4 S	142° 09'.0 E
	legend to <i>UNSURVEYED</i>	10° 38'.5 S	142° 06'.0 E
Delete	legend, Inadequately Surveyed (see Note)	10° 23'.7 S	142° 03'.3 E
	legend, Inadequately Surveyed (see Note)	10° 24'.0 S	142° 09'.0 E
	legend, Inadequately Surveyed (see Note)	10° 38'.4 S	142° 02'.5 E
	note, UNSURVEYED	10° 26'.3 S	141° 37'.0 E
	note, INADEQUATELY SURVEYED	10° 27'.0 S	141° 37'.0 E

**299\* AUSTRALIA - NORTHERN TERRITORY - Jones Shoal - Shoal relocated**HMAS *Benalla* (DHDB 1131509)**Aus 308 [1013/2008]**

Insert	accompanying block	10° 57'.0 S	132° 10'.0 E
--------	--------------------	-------------	--------------

**300\* AUSTRALIA - NORTHERN TERRITORY - Port Essington - ZOC diagram; chart notes; legends**  
 Australian Hydrographic Service (AA318722)

**Aus 18 [1013/2008]**

Substitute	accompanying ZOC diagram for reliability diagram	11° 23'.0 S	132° 17'.0 E
Amend	legend to <i>UNSURVEYED</i>	11° 08'.9 S	131° 58'.0 E
	legend to <i>UNSURVEYED</i>	11° 12'.8 S	131° 57'.7 E
Delete	legend, Inadequately Surveyed (see Note)	11° 01'.5 S	132° 03'.5 E
	legend, Inadequately Surveyed (see Note)	11° 02'.1 S	132° 13'.5 E
	note, UNSURVEYED AREAS	11° 18'.0 S	132° 00'.0 E
	note, INADEQUATELY SURVEYED	11° 18'.5 S	132° 00'.0 E

**301\* AUSTRALIA - NORTHERN TERRITORY - Melville Island - ZOC diagram; chart note; legends**  
 Australian Hydrographic Service (AA318722)

**Aus 21 [154/2002]**

Substitute	accompanying ZOC diagram for reliability diagram	11° 28'.0 S	130° 39'.0 E
Amend	legend to <i>UNSURVEYED</i>	11° 21'.5 S	130° 37'.0 E
	legend to <i>UNSURVEYED</i>	11° 28'.0 S	130° 43'.3 E
Delete	note, UNSURVEYED	11° 28'.2 S	130° 37'.9 E

**302\* INDONESIA - Yamdena - Light**  
 UKHO (AA277571, AA389784)

**Aus 4721 (INT 721) [195/2009]**

Amend	light to <i>F(2) 20M</i>	7° 38'.0 S	131° 37'.0 E
-------	--------------------------	------------	--------------

**AX 4721F [195/2009]**

Amend	light to <i>F(2) 20M</i>	7° 38'.0 S	131° 37'.0 E
-------	--------------------------	------------	--------------

**303 INDONESIA - Lombok - Pandanan Point - Light**  
 BA Notice 8/894/2009 (AA389914)

**Aus 414 [1125/2008]**

Insert	light, <i>Fl.4s 24M</i>	8° 43'.3 S	115° 51'.2 E
--------	-------------------------	------------	--------------

**304\* AUSTRALIA - WESTERN AUSTRALIA - Browse Island - Legend**  
 Australian Hydrographic Service (AA388227)

**Aus 320 [851/2008]**

Delete	legend, Unsurveyed (see Note)	13° 52'.4 S	122° 51'.5 E
--------	-------------------------------	-------------	--------------

**305\* INDIAN OCEAN - Cocos Islands - ZOC diagram**  
Australian Hydrographic Service (AA318722)

**Aus 606 [445/2005]**

Substitute accompanying ZOC diagram for reliability diagram 12° 20'.0 S 96° 36'.0 E

**Aus 607 [779/2005]**

Substitute accompanying ZOC diagram for reliability diagram 12° 04'.0 S 96° 56'.4 E

Amend legend to *Unsurveyed* 12° 06'.5 S 96° 53'.7 E  
 legend to *Unsurveyed* 12° 09'.7 S 96° 55'.6 E  
 legend to *Unsurveyed* 12° 12'.9 S 96° 52'.6 E  
 legend to *Unsurveyed* 12° 11'.6 S 96° 49'.3 E  
 legend to *Unsurveyed* 12° 10'.2 S 96° 52'.5 E

Delete note, INADEQUATELY SURVEYED 12° 01'.8 S 96° 52'.5 E  
 note, UNSURVEYED AREAS 12° 01'.3 S 96° 53'.3 E  
 legend, Inadequately Surveyed (see Note) 12° 04'.3 S 96° 49'.2 E  
 legend, Inadequately Surveyed (see Note) 12° 04'.3 S 96° 50'.1 E  
 legend, Inadequately Surveyed (see Note) 12° 03'.9 S 96° 50'.5 E  
 legend, Inadequately Surveyed (see Note) 12° 04'.8 S 96° 51'.2 E  
 legend, Inadequately Surveyed (see Note) 12° 04'.9 S 96° 52'.6 E  
 legend, Inadequately Surveyed (see Note) 12° 07'.6 S 96° 48'.9 E  
 legend, Inadequately Surveyed (see Note) 12° 05'.7 S 96° 50'.1 E

**306\* AUSTRALIA - WESTERN AUSTRALIA - Barrow Island - Production wells southwestwards**  
FPSO *Four Vanguard* (AA389785, AA389786)

**Aus 328 [61/2009]**

Insert accompanying block 20° 56'.0 S 114° 56'.0 E

**Aus 743 [60/2009]**

Insert accompanying block 20° 58'.0 S 114° 56'.0 E

**307\* AUSTRALIA - WESTERN AUSTRALIA - Shark Bay - ZOC diagram; chart note; legends**  
Australian Hydrographic Service (AA318722)

**Aus 749 [190/2008]**

Substitute accompanying ZOC diagram for reliability diagram 26° 32'.0 S 112° 49'.0 E

Delete legend, Inadequately Surveyed (see Note) 25° 28'.3 S 113° 23'.2 E  
 legend, Inadequately Surveyed (see Note) 25° 33'.0 S 113° 39'.5 E  
 legend, Inadequately Surveyed (see Note) 25° 38'.8 S 113° 18'.0 E  
 legend, Inadequately Surveyed (see Note) 25° 49'.4 S 113° 23'.5 E  
 legend, Inadequately Surveyed (see Note) 26° 03'.4 S 113° 08'.5 E  
 legend, Inadequately Surveyed (see Note) 26° 09'.8 S 113° 21'.0 E  
 legend, Inadequately Surveyed (see Note) 26° 10'.5 S 113° 34'.0 E  
 legend, Inadequately Surveyed (see Note) 26° 23'.1 S 113° 38'.5 E  
 legend, Inadequately Surveyed (see Note) 26° 31'.8 S 113° 40'.0 E  
 legend, Inadequately Surveyed (see Note) 26° 38'.5 S 113° 31'.3 E  
 note, INADEQUATELY SURVEYED 26° 20'.5 S 112° 51'.0 E

**308\* AUSTRALIA - WESTERN AUSTRALIA - Warnbro Sound - Depths; beacons**  
Department for Planning and Infrastructure (AA363163, AA363164)

**Aus 116 (plan, Warnbro Sound) [1132/2008]**

Insert accompanying block 32° 19'.0 S 115° 40'.0 E

**309\* AUSTRALIA - WESTERN AUSTRALIA - Point D'Entrecasteaux - Submarine cable southwestwards**  
Global Marine Systems (AA382165; DHDB 1168459)

**Aus 758 [NE 16/1/2009]**

Insert disused submarine cable, between 35° 33'.70 S 115° 41'.32 E  
35° 32'.20 S 115° 36'.08 E

**310\* AUSTRALIA - WESTERN AUSTRALIA - King George Sound - Seal Island - Obstruction**

*Former Notice - 986(T)/2008 is cancelled*  
Albany Port Authority (AA389959, AA389967)

**Aus 109 [916/2007]**

Insert depth, 8m, enclosed by danger circle with legend  
*Obstn* 35° 04'.585 S 117° 58'.410 E

**Aus 110 [156/2009]**

Insert depth, 8m, enclosed by danger circle with legend  
*Obstn* 35° 04'.655 S 117° 58'.320 E

**311\* AUSTRALIA - SOUTH AUSTRALIA - Murray Canyon - Depths**

Geoscience Australia (DHDB 951850)

**Aus 4727 (INT 727) [202/2009]**

Insert accompanying block 36° 30'.0 S 136° 15'.0 E

**312\* AUSTRALIA - SOUTH AUSTRALIA - Port Adelaide - Light bearing**

UKHO (AA387557)

**Aus 137 [159/2009]**

Amend legend to *Dir 188.9°* 34° 49'.58 S 138° 30'.53 E

**313\* AUSTRALIA - TASMANIA - Wedge Island - Depth**

Australian Hydrographic Service (AA388214)

**Aus 171 [69/2009]**

Substitute depth, 5m, for depth, 5<sub>3</sub>m 43° 07'.8 S 147° 40'.5 E

**314\* AUSTRALIA - BASS STRAIT - Hogan Island - Light**  
 Australian Maritime Safety Authority (AA390085)

**Aus 148 (plan, Hogan Group) [743/2008]**

Move	light	39° 13'.17 S	146° 58'.98 E
	to	39° 13'.127 S	146° 59'.058 E

**Aus 802 [205/2009]**

Move	light	39° 13'.2 S	146° 58'.8 E
	to	39° 13'.22 S	146° 58'.98 E

**315\* AUSTRALIA - VICTORIA - Gabo Island - Tidal panel**  
 UKHO (AA389798)

**Aus 805 [164/2009]**

Amend	MHWS to 1.1	37° 29'.6 S	149° 19'.6 E
	MLWN to 0.3	37° 29'.6 S	149° 22'.3 E

**316(T)/2009 AUSTRALIA - NEW SOUTH WALES - Jervis Bay - Bowen Island - Scientific instruments**

Date - Until 17 July 2009

Geoscience Australia (AA390583)

Subsurface scientific instruments exist in positions 35° 06'.2 S 150° 45'.9 E and 35° 06'.8 S 150° 45'.3 E.

**Chart temporarily affected - Aus 193 - Aus 807 - Aus 808 – AX 0808E – AX 60193 – AX 70193 - AU5XX193****317(T)/2009 AUSTRALIA - NEW SOUTH WALES - Port Kembla - Depth information**

Former Notice - 161(T)/2008 is cancelled

Port Kembla Port Corporation Notice 5/2009 (AA390838)

Available depths as at 6 March 2009:

Berth	Metres	Remarks
* Inner Harbour	15.1	
North West Basin	11.7	
101	11.5	
102	16.0	
103	-	Under Construction
104	15.7	
105	15.7	
106	13.9	
107	12.3	
108	-	Future Development
109	12.2	
110	11.0	
111	15.6	
112	12.8	
113	11.0	
201	10.6	To 250m
201	10.0	To 280m
201	8.5	To 350m
202	10.6	
203	10.1	
204	5.6	
205	7.0	
206	11.2	

\* Indicates revised entry.

**Chart temporarily affected - Aus 194 - AU5XX194****318(T)/2009 AUSTRALIA - NEW SOUTH WALES - Botany Bay - Light buoys moved**

Sydney Port Corporation (AA391264)

The following light buoys have been repositioned as follows:

Buoy	New position
No14 (33° 58'.26 S 151° 12'.19 E)	33° 58'.35 S 151° 12'.16 E
No16 (33° 58'.22 S 151° 12'.34 E)	33° 58'.23 S 151° 11'.85 E.

**Chart temporarily affected - Aus 198 - Aus 199 - AU5198X9**

**319(T)/2009 AUSTRALIA - NEW SOUTH WALES - Newcastle - Depth information**

Former Notice - 77(T)/2009 is cancelled  
Newcastle Port Corporation (AA390601)

Available depths as at 5 March 2009:

<i>Berth</i>	<i>Metres</i>
Western Basin 3	11.6
Western Basin 4	11.6
Eastern Basin 1	11.4
Eastern Basin 2 North of Ch 450	11.6
Eastern Basin 2 South of Ch 450	11.3
Dockyard 2 (Dredge)	3.9
Channel Berth (formerly Dockyard 4)	8.3
Dyke 1	11.8
Dyke 2	12.2
* Dyke 4	15.7
* Dyke 5	15.9
Dyke 6	6.5
BHP Wharf 6 to Ch 1050	7.9
Kooragang 2	11.6
Kooragang 2 North Dolphin	11.0
Kooragang 2 South Dolphin	10.9
Kooragang 3	13.0
Kooragang 4	16.5
Kooragang 5	16.5
Kooragang 6	16.5
Kooragang Ship Receival KSR	8.0
Throsby 1	9.5
Carrington wharf	To be sounded as and when required
Tug berth 4	6.5
Elgo wharf	To be sounded as and when required
<i>Channels</i>	
Entrance Approach	17.4
Entrance Channel (18.0m)	16.8
Entrance Channel (17.4m)	17.1
Entrance Channel (16.8m)	16.5
Entrance Channel (16.2m)	16.1
Entrance Channel to Horseshoe	15.1
Horseshoe	15.0
Steelworks Channel to Swinging Basin	15.0
Swinging Basin	15.0
Swinging Basin to BHP	10.6
Basin Cutting	12.8
Basin Area to Eastern & Western Basin Berths	12.4
Basin Area to 1 Throsby	10.0
Stockton Crossing	3.6

\* Indicates revised entry.

**Chart temporarily affected - Aus 207 - Aus 208 - AU5XX208**

**320(T)/2009 AUSTRALIA - QUEENSLAND - Moreton Bay - Manly - Harbour works; dredging operations**

*Former Notice* - 211(T)/2009 is cancelled

*Date* - Until 31 October 2009

Maritime Safety Queensland Notice 91(T)/2009, 140(T)/2009 (AA385859, AA390773)

Harbour works and dredging operations associated with the marina redevelopment are in progress in Manly Boat Harbour (27° 27'.22 S 153° 11'.40 E).

The dredge *Ken Harvey*, MT *Sealion*, MT *Turtle* and two spoil barges are onsite and will display appropriate lights and signals.

The dredge has deployed six anchors, marked by light buoys, Q.Y.

Lit mooring buoys, Q.Y, exist in positions 27° 26'.74 S 153° 12'.05 E and 27° 26'.70 S 153° 12'.14 E.

The western internal channel is closed for the duration of the works. Vessels requiring access to and from the harbour must use the eastern internal entrance.

Vessels transiting the channel during daylight hours, Monday to Friday, are to contact the dredge on VHF Ch 13 to request the mooring wires be lowered.

Mariners are advised to navigate with caution in the area.

**Chart temporarily affected - Aus 236 - AU5237X8**

**321(T)/2009 AUSTRALIA - QUEENSLAND - Moreton Bay - Manly - Light beacon established**

Maritime Safety Queensland Notice 146(T)/2009 (AA390824)

The special beacon (27° 27'.35 S 153° 11'.42 E) has been temporarily altered to a starboard lateral light beacon, *Fl.G.3s*.

**Chart temporarily affected - Aus 236 - AU5237X8**

**322(T)/2009 AUSTRALIA - QUEENSLAND - Moreton Bay - Wynnum - Dredging operations completed**

*Former Notice* - 1192(T)/2008 is cancelled

Maritime Safety Queensland Notice 719(T)/2008 (AA369081)

Cancel this notice on receipt.

**Chart formerly affected - Aus 236 - AU5237X8**

**323(T)/2009 AUSTRALIA - QUEENSLAND - Cape Moreton - Live firing northeastwards**

*Date* - Until 4 April 2009

Department of Defence RAAF (AA387426)

Military exercise area R677A, bounded by 26° 20'.0 S to 27° 00'.0 S and 154° 30'.0 E to 155° 10'.0 E, will be activated for a live firing from 1 to 3 April 2009.

**Chart temporarily affected - Aus 364 - Aus 365 - Aus 424**

**324(T)/2009 AUSTRALIA - QUEENSLAND - Mooloolaba - Shoaling**

*Former Notice* - 929(T)/2008 is cancelled

Maritime Safety Queensland Notice 148(T)/2009 (AA391123)

Shoaling, with a least depth of 2.1 metres LAT, exists off the end and adjacent to the eastern breakwater (26° 40'.75 S 153° 07'.96 E (WGS84 datum)) and 120 metres beyond the end of the western breakwater, in the vicinity of 26° 40'.76 S 153° 07'.88 E.

Mariners are advised to navigate with caution in the area.

**Chart temporarily affected - Aus 235**

**325(T)/2009 AUSTRALIA - QUEENSLAND - Gladstone - Dredging operations***Date* - Until 5 April 2009

Maritime Safety Queensland Notice 145(T)/2009 (AA390816)

The dredge *Brisbane* is conducting dredging operations in the main channels of Gladstone Harbour.

The dredge will monitor VHF Ch 16 and 13.

Mariners are advised to navigate with caution in the area.

**Chart temporarily affected - Aus 244 - Aus 245 - Aus 246 - AU5244X5**

**326(T)/2009 AUSTRALIA - QUEENSLAND - Port Alma to Keppel Bay - Scientific instruments recovered***Former Notice* - 213(T)/2009 is cancelled

Maritime Safety Queensland Notice 52(T)/2009 (AA382599)

Cancel this notice on receipt.

**Chart formerly affected - Aus 247 - Aus 819 - AU424150 - AU5247P1**

**327(T)/2009 AUSTRALIA - QUEENSLAND - Shoalwater Bay - Live firing***Date* - Until 18 May 2009

Maritime Safety Queensland Notice 144(T)/2009 (AA390767)

Live firing activities will be conducted in the Shoalwater Bay training area during the period 14 April to 17 May 2009.

A marine danger area extends to all waters south of the line defined by the following positions:

South Bank Oyster Creek	Point 6-1	22° 30'.73 S	150° 26'.34 E
North Bank East Creek	Point 3-6	22° 30'.20 S	150° 33'.89 E

All waters, creeks, beaches and other areas within the declared marine danger area are not available for access.

There will be safe anchorages available at Freshwater, Port Clinton, Pearl Bay, Island Head Creek on the east coast and Supply Bay on Townshend Island.

Mariners are advised to keep clear of this area throughout the above times.

**Chart temporarily affected - Aus 260 - Aus 367 - Aus 822 - AX 60260 - AU423150 - AU5261P1**

**328(T)/2009 AUSTRALIA - QUEENSLAND - Hay Point to Prudhoe Island - Scientific instruments***Former Notice* - 933(T)/2008 is cancelled

Maritime Safety Queensland Notice 562(T)/2008, 147(T)/2009 (AA358676, AA390768)

Special light buoys, *Fl(5)Y,20s*, exist in positions:

21° 16'.49 S	149° 18'.61 E
21° 16'.34 S	149° 18'.59 E
* 21° 08'.98 S	149° 35'.21 E

\* Indicates revised entry.

Mariners are not to use these buoys as moorings.

**Chart temporarily affected - Aus 249 - Aus 250 - Aus 823 - AU422149 - AU5250P2**

**329(T)/2009 AUSTRALIA - QUEENSLAND - Surprise Rock - Light beacon destroyed**  
 Maritime Safety Queensland Notice 125(T)/2009 (AA389353)

The isolated danger beacon (20° 21'.3S 149° 01'.6 E) has been destroyed.

Mariners are advised to navigate with caution in the area.

**Chart temporarily affected - Aus 252 - Aus 253 - Aus 824 - AU421149**

**330(T)/2009 AUSTRALIA - QUEENSLAND - Boyd Point - Drilling operations completed**  
*Former Notice - 1206(T)/2008 is cancelled*  
 Maritime Safety Queensland Notice 693(T)/2008 (AA367879)

Cancel this notice on receipt.

**Chart formerly affected - Aus 301 - AU413141**

**331(T)/2009 AUSTRALIA - WESTERN AUSTRALIA - Port Hedland - Harbour works**  
*Date - Until 28 February 2010*  
 Port Hedland Port Authority Notice 3/2009 (AA390591)

Works associated with the construction of the new Utah Point berth facility are in progress.

The area bounded by the following positions (WGS84 datum) is prohibited to all recreation vessels and is restricted to authorized vessels only:

20° 18'.82 S	118° 34'.12 E
20° 18'.82 S	118° 34'.16 E
20° 19'.00 S	118° 34'.17 E
20° 19'.00 S	118° 34'.06 E

**Chart temporarily affected - Aus 52 - Aus 53 - Aus 54**

**332(T)/2009 AUSTRALIA - WESTERN AUSTRALIA - Port Hedland - Dredging operations**  
 Port Hedland Port Authority Notice 4/2009 (AA390589)

The dredge *DN150* and barges *Soundcem 2* and *Soundcem 3* are conducting dredging operations in an area bounded by the following positions (WGS84 datum):

20° 19.00 S	118° 34'.06 E
20° 19.00 S	118° 34'.17 E
20° 19.51 S	118° 34'.42 E
20° 19.53 S	118° 34'.08 E

The dredge *Leonardo da Vinci* will be onsite from early April.

Mariners are advised to navigate with caution in the area.

**Chart temporarily affected - Aus 52 - Aus 53 - Aus 54**

**333(T)/2009 AUSTRALIA - WESTERN AUSTRALIA - King George Sound - North Channel to Barker Bay - Scientific instruments**

*Date - Until 31 May 2010*  
 Albany Port Authority Notice 2(T)/2009 (AA391679)

Scientific instruments marked by special light buoys, Q(4)Y.5s, exist in positions (WGS84 datum):

35° 02'.80 S	117° 55'.36 E
35° 02'.26 S	118° 01'.51 E.

**Chart temporarily affected - Aus 109 - Aus 110 - Aus 118 - AU5XX109**

**334(T)/2009 AUSTRALIA - SOUTH AUSTRALIA - Whidbey Isles to Kangaroo Island - Scientific instruments**

Date - Until 30 April 2010

South Australian Research and Development Institute (AA390585, AA390586)

Subsurface scientific instruments exist as follows:

<i>Position (WGS84 datum)</i>	<i>Removed</i>
34° 55'.68 S 135° 00'.60 E	Apr - Sep 09, Jan 10
35° 16'.14 S 135° 41'.22 E	Apr - Sep 09
35° 30'.00 S 136° 36'.00 E	Apr 09 - Jan 10
36° 30'.96 S 136° 14'.58 E	Apr - Jun 09, Oct - Nov 09
36° 31'.20 S 136° 51'.30 E	

**Chart temporarily affected - Aus 342 - Aus 343 - Aus 345 - Aus 346 - Aus 444 – AX 0343E - AU336135****335(T)/2009 AUSTRALIA - SOUTH AUSTRALIA - Port Stanvac - Scientific instrument**

Date - Until 31 March 2010

Department for Transport, Energy and Infrastructure SA Notice 13/2009 (AA390604)

A scientific instrument marked by a special light buoy, *Fl.Y.3s*, exists in position 35° 05'.54 S 138° 27'.95 E (WGS84 datum).**Chart temporarily affected - Aus 125 - Aus 780 - Aus 781****336(T)/2009 AUSTRALIA - VICTORIA - Portland - Dredging operations completed***Former Notice - 177(T)/2009 is cancelled*

Victorian Notice 9(T)/2009 (AA381831)

Cancel this notice on receipt.

**Chart formerly affected - Aus 140****337(T)/2009 AUSTRALIA - TASMANIA - Norfolk Bay - Obstructions**

Date - Until 6 April 2009

Marine and Safety Tasmania Notice M38/2009 (AA390834)

Obstructions may exist in the area bounded by the following:

<i>Position</i>	<i>Remarks</i>
42° 59'.00 S 147° 49'.40 E	marked by special buoy
42° 59'.47 S 147° 49'.41 E	
42° 59'.40 S 147° 50'.68 E	
42° 59'.19 S 147° 50'.66 E	marked by special buoy

**Chart temporarily affected - Aus 171 - Aus 796****338(T)/2009 AUSTRALIA - TASMANIA - River Tamar - Stephenson's Bend - Beacon destroyed**

Marine and Safety Tasmania Notice M36/2009 (AA390600)

The port lateral beacon (41° 25'.01 S 147° 07'.31 E) has been destroyed.

**Chart temporarily affected - Aus 168 - AU5167X8**

**339(T)/2009 AUSTRALIA - TASMANIA - Devonport - Depth information**

Former Notice - 780(T)/2006 is cancelled

Marine and Safety Tasmania Notice M34/2009 (AA389567)

Available depths as at 26 February 2009:

<i>Berth</i>	<i>Metres</i>
Entrance Channel	8.0
Swing Basin	8.6
E1	6.5
E2	8.5
E3	7.8
W1	8.0
W3	6.5
W4	9.0
W5	5.2

**Chart temporarily affected - Aus 164 - AU5164P1****340(T)/2009 AUSTRALIA - TASMANIA - Ulverstone - Drilling operations**

Date - Until 4 April 2009

Marine and Safety Tasmania Notice M43/2009 (AA390812)

The barge *Waddamana* is conducting drilling operations on the southern side of River Leven road bridge (41° 09'.42 S 146° 10'.06 E).

The centre of each obstructed bridge span will be marked during the day by an orange diamond shape and during the night by yellow flashing lights.

The barge will display appropriate lights.

Mariners are advised to navigate with caution in the area.

**Chart temporarily affected - Aus 164 - AU5164P2****341(P)/2009 AUSTRALIA - VICTORIA - Port Phillip - Point Lonsdale - Light to be altered**

Date - On or about 6 March 2009

Victorian Notice 31(P)/2009 (AA390544)

Point Lonsdale light (38° 17'.51 S 144° 36'.82 E (WGS84 datum)) has been altered to LFI(2)WGR.15s 12/10M. Light sectors are as follows:

white	266° - 272° (6°)
red	272° - 325° (53°)
green	325° - 342.8° (17.8°)
white	342.8° - 069° (86.2°)
red	069° - 110° (41°)

Note: Charting action will be undertaken once the sectors have been validated.

**Chart which will be affected - Aus 143 - Aus 144 - Aus 158 - Aus 349 - Aus 422 - Aus 487 - Aus 788 - AU439144**

**342(P)/2009 AUSTRALIA - VICTORIA - Port Phillip - Queenscliff - Light to be altered**

Date - On or about 2 March 2009

Victorian Notice 28(P)/2009 (AA389351)

The low light (38° 16'.41 S 144° 39'.56 E (WGS84 datum)) sectors have been altered as follows:

red 241° - 252° (11°)  
 white 252° - 260° (8°)  
 green 260° - 267° (7°)  
 red 267° - 315.7° (48.7°)  
 white 315.7° - 356° (40.3°)  
 red 356° - 032° (36°)  
 white 032° - 046° (14°)

Note: Charting action will be undertaken once the sectors have been validated.

**Chart which will be affected - Aus 143 - Aus 144 - Aus 158 - AU439144**

**343(T)/2009 AUSTRALIA - VICTORIA - Port Phillip - Williamstown Channel - Light beacon destroyed**

Victorian Notice 32(T)/2009 (AA390599)

No 21 light beacon (37° 51'.23 S 144° 54'.78 E) has been destroyed; a starboard light buoy, *Fl.G.5s*, exists in situ.

**Chart temporarily affected - Aus 154 - AU5XX154**

**344(T)/2009 AUSTRALIA - VICTORIA - Port Phillip - Hobsons Bay - Dredging operations**

Date - Until 31 May 2009

Victorian Notice 29(T)/2009 (AA390789)

The dredges *Eva K* and *Hastings* are conducting dredging operations in Hobsons Bay.

A dredge will be operating in position 37° 51'.02 S 144° 57'.08 E with a floating pipeline connected. The pipeline is marked by orange buoys.

Special buoys exist in positions 37° 51'.00 S 144° 57'.06 E and 37° 51'.06 S 144° 57'.18 E.

A barge will be anchored in position 37° 51'.35 S 144° 56'.90 E, with a dredge operating within 200 metres of the barge. The barge will display appropriate lights. A pipeline will be connected to the barge, marked by white floats and special light buoys.

Mariners are advised to navigate with caution in the area.

**Chart temporarily affected - Aus 143 - Aus 154 - Aus 155 - AU438144 - AU5XX154**

**345(T)/2009 AUSTRALIA - VICTORIA - Port Phillip - Sandringham - Dredging operations**

Date - Until 9 April 2009

Victorian Notice 30(T)/2009 (AA390788)

Dredging operations are in progress in Sandringham harbour (37° 56'.50 S 144° 59'.54 E).

A barge will be anchored in position 37° 56'.67 S 144° 59'.47 E.

The barge and pipeline will be marked by special light buoys, Q.Y. The pipeline will also be marked by white floats.

Mariners are advised to navigate with caution in the area.

**Chart temporarily affected - Aus 143 - Aus 155 - AU438144 - AU5155P4**

**346(T)/2009 AUSTRALIA - VICTORIA - Western Port - Hastings Bight - Drilling operations completed**

*Former Notice - 231(T)/2009 is cancelled*

Victorian Notice 19(T)/2009 (AA384842)

Cancel this notice on receipt.

**Chart formerly affected - Aus 150 - Aus 151 - Aus 152 - AU5152P1**

**347(T)/2009 AUSTRALIA - VICTORIA - Bass Strait - Drilling operations completed**

*Former Notice - 993(T)/2008 is cancelled*

Australian Maritime Safety Authority (AA360349)

Cancel this notice on receipt.

**Chart formerly affected - Aus 357A - Aus 422 - Aus 423 - Aus 487 - AU439148**

## HYDROGRAPHIC REPORTS

<i>Locality</i>	<i>Report</i>	<i>Ship/Authority</i>	<i>Observer</i>
NSW- Jervis Bay Manly	Light Lights, infrastructue	HMAS <i>Diamantina</i>	L Ellis
QLD- St Crispin Reef	Depth		C Wood
TIMOR SEA- Sahul Banks	Depths	ACV <i>Triton</i>	M Koenig

**NAVIGATION WARNINGS**

The following radio messages have been received during the period to 13 March 2009. Signal copies of these messages may be destroyed. It is recommended that the reprint of Navigational Warnings should be kept in a file or a book divided into areas. Cancellation should be made on receipt of signals and reprints.

Rigs on location other than those listed in the latest Section III summary are the subject of Radio Navigational Warnings. Rigs in transit will not be the subject of Warnings.

**AUSCOAST WARNING**

- 055 Cancelled.  
 056 Drill rig *Ocean Epoch* in position 21° 31'.38 S 114° 06'.59 E. 2.5M clearance requested.  
 057 Cancelled.  
 058 Drill rig *Songa Venus* in position 13° 40'.40 S 123° 20'.61 E. 2.5M clearance requested.  
 059 Drill rig *Ocean Bounty* in position 19° 51'.19 S 115° 39'.23 E. 2.5M clearance requested.  
 060 Eight steel special light buoys, *Fl. Y.2s*, 2-4 metres diameter and 3-5 metres in length in position 14° 21'.0 S 121° 39'.0 E. 2.5M clearance requested.  
 061 Drill rig *Atwood Eagle* in position 19° 40'.10 S 112° 47'.45 E. 2.5M clearance requested.  
 062 Cancelled.  
 063 Drill rig *Songa Mercur* in position 21° 32'.18 S 114° 05'.03 E. 2.5M clearance requested.  
 064 Special purpose vessel *Orient Explorer* conducting seismic survey towing 4M cable in area 19° 19'.00 S to 19° 47'.00 S and 115° 16'.00 E to 115° 48'.00 E. 5M clearance requested.  
 065 Cancelled.  
 066 White Tip Reef racon ALRS Vol(2) (19° 55'.47 S 150° 16'.09 E) temporarily discontinued.  
 067 Little Bugatti Reef light K3053 (20° 01'.23 S 150° 15'.37 E) unreliable.  
 068 Drill rig *Stena Clyde* in position 20° 00'.36 S 115° 09'.06 E. 2.5M clearance requested.

**NAVAREA X WARNINGS**

- 005 Cancelled.

**Navigational warnings in force as at 130001UTC MAR 09.****Auscoast**

**2008** 340 353 368 370 374 390 401

**2009** 007 014 027 041 044 048 051 056 058 059 060 061 063 064 066 067 068

**Navarea X**

001

**Summary of mobile drilling rigs as at 130001UTC MAR 09.**

<i>Name</i>	<i>Position</i>
West Atlas	12° 40'.30 S 124° 32'.40 E
Songa Venus	13° 40'.40 S 123° 20'.61 E
Sedco 703	13° 59'.20 S 121° 58'.33 E
Atwood Eagle	19° 40'.10 S 112° 47'.45 E
Ocean Bounty	19° 51'.19 S 115° 39'.23 E
Stena Clyde	20° 00'.36 S 115° 09'.06 E
Ensco 106	20° 26'.83 S 115° 07'.20 E
Nan Hai 6	21° 26'.02 S 114° 01'.60 E
Ocean Epoch	21° 31'.38 S 114° 06'.59 E
Songa Mercur	21° 32'.18 S 114° 05'.03 E.

**NAVAREA XIV WARNINGS**

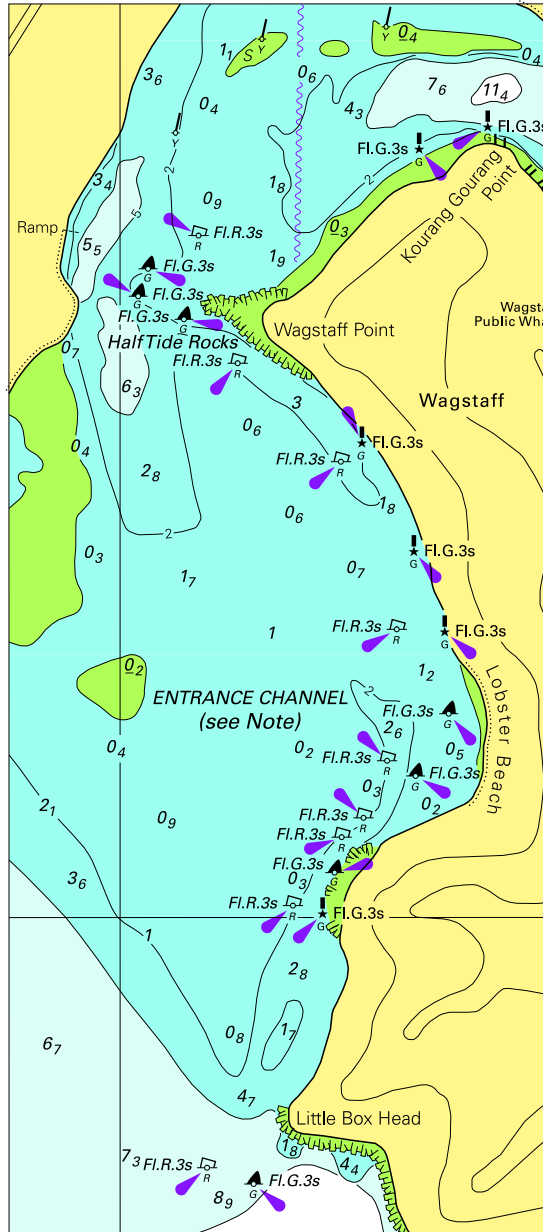
Nil.

**Navarea XIV warnings in force as at 130001UTC MAR 09.**

**2008** 085

**2009** 002 003

To accompany Australian Notice to Mariners 283/2009

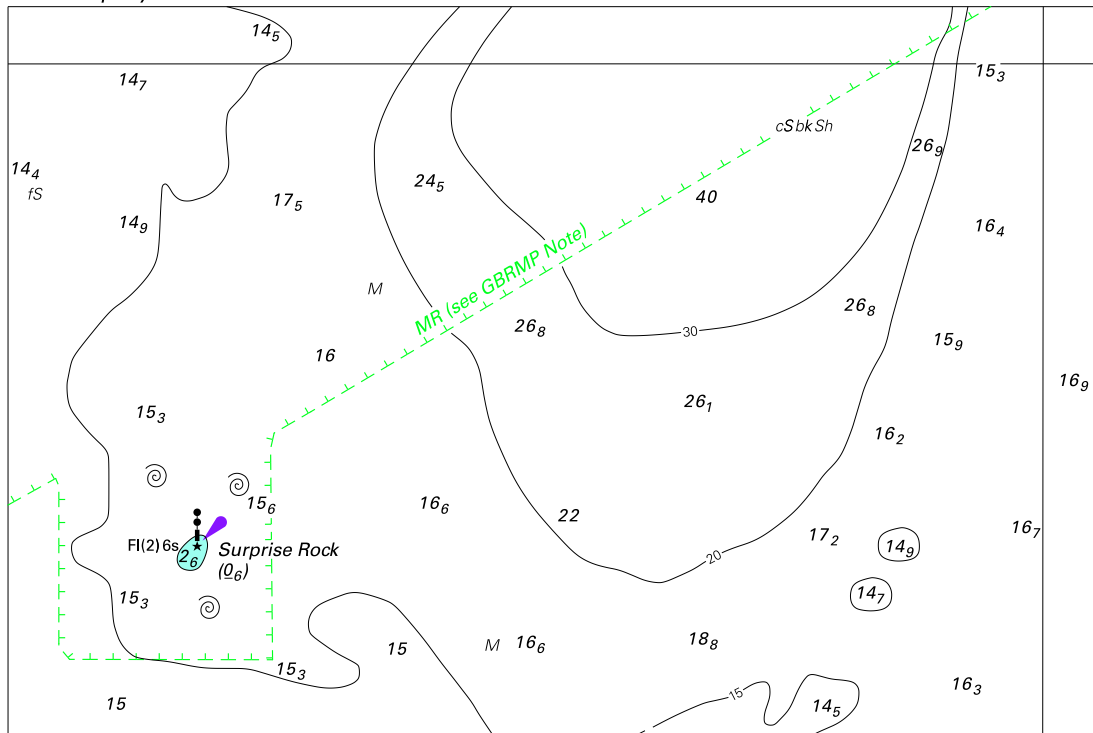


© Commonwealth of Australia 2009

Block for chart Aus 216

(71.3 x 162.6mm)

To accompany Australian Notice to Mariners 290/2009

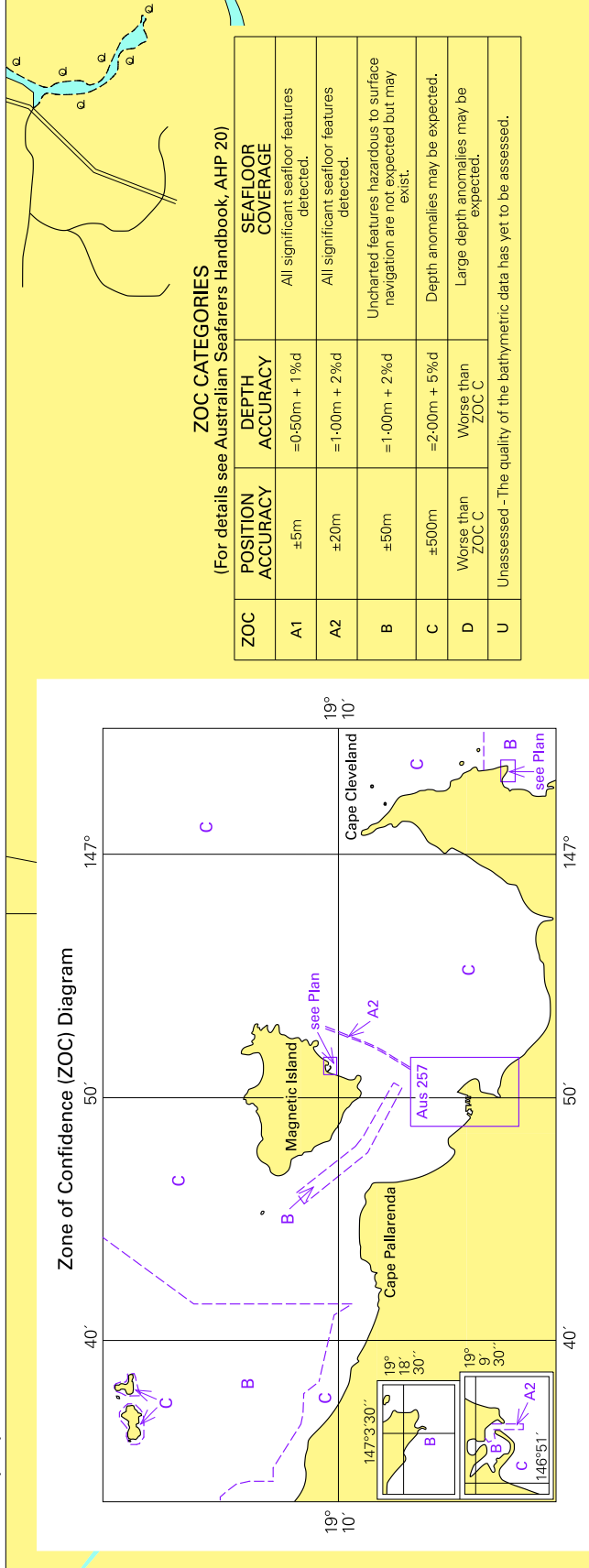


Block for chart Aus 253

© Commonwealth of Australia 2009

(144.3 x 96.5mm)

To accompany Australian Notice to Mariners 292/2009

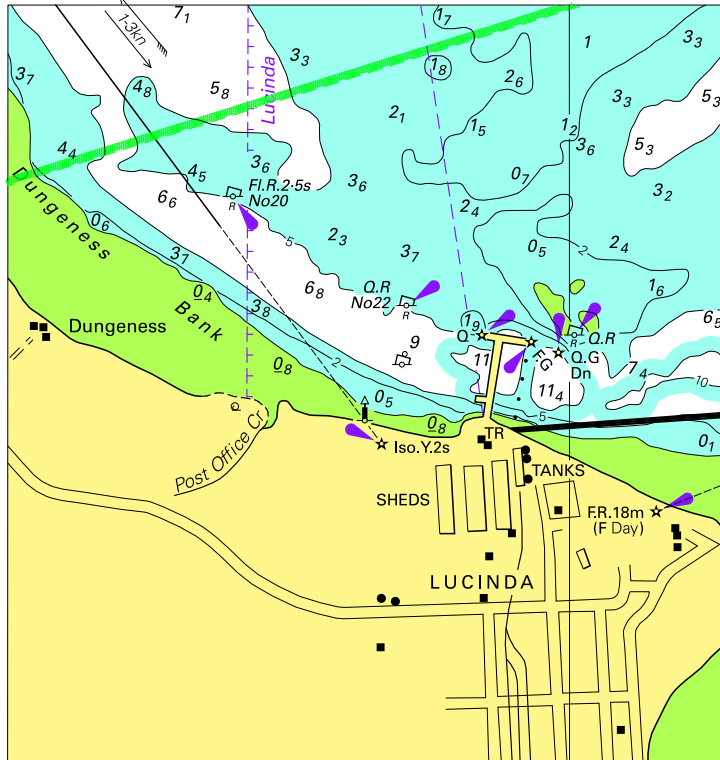


Block for chart Aus 256

© Commonwealth of Australia 2009

(226.6 x 85.1mm)

To accompany Australian Notice to Mariners 293/2009

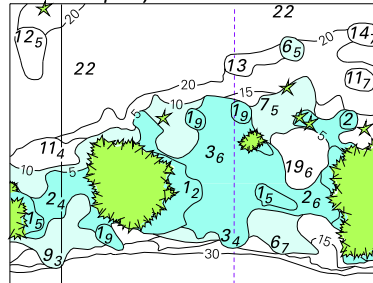


© Commonwealth of Australia 2009

Block for chart Aus 259

(94.5 x 100.0mm)

To accompany Australian Notice to Mariners 294/2009

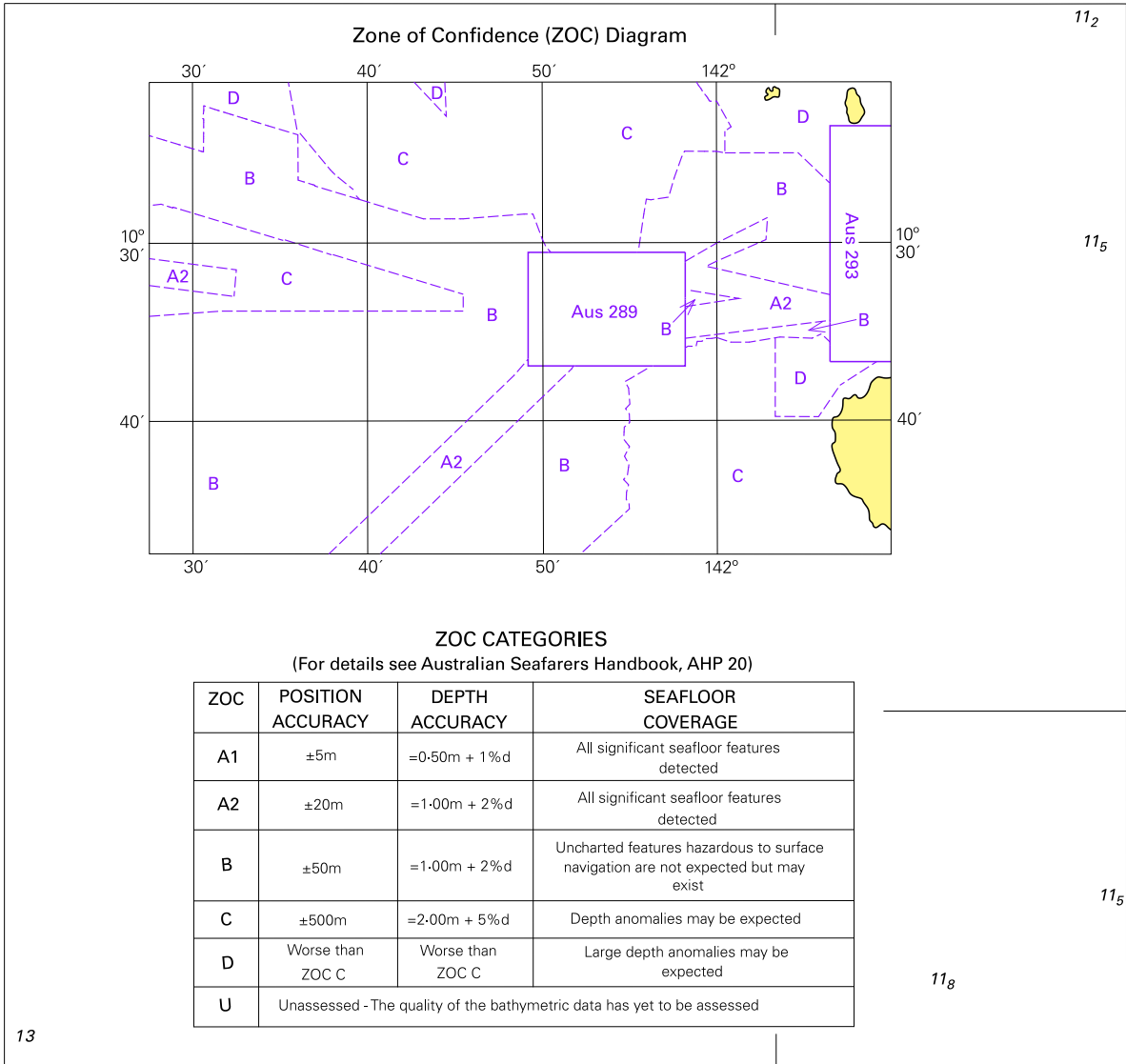


© Commonwealth of Australia 2009

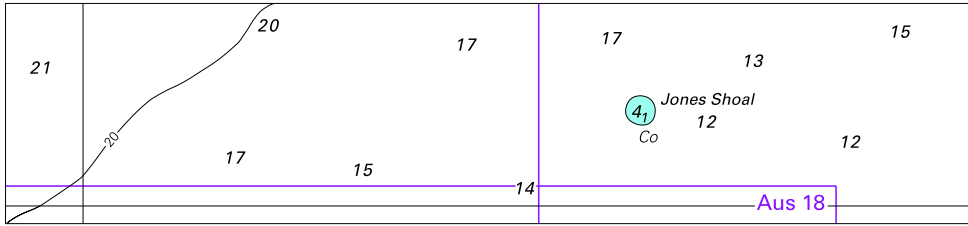
Block for chart Aus 831

(48.4 x 37.2mm)

To accompany Australian Notice to Mariners 298/2009



To accompany Australian Notice to Mariners 299/2009

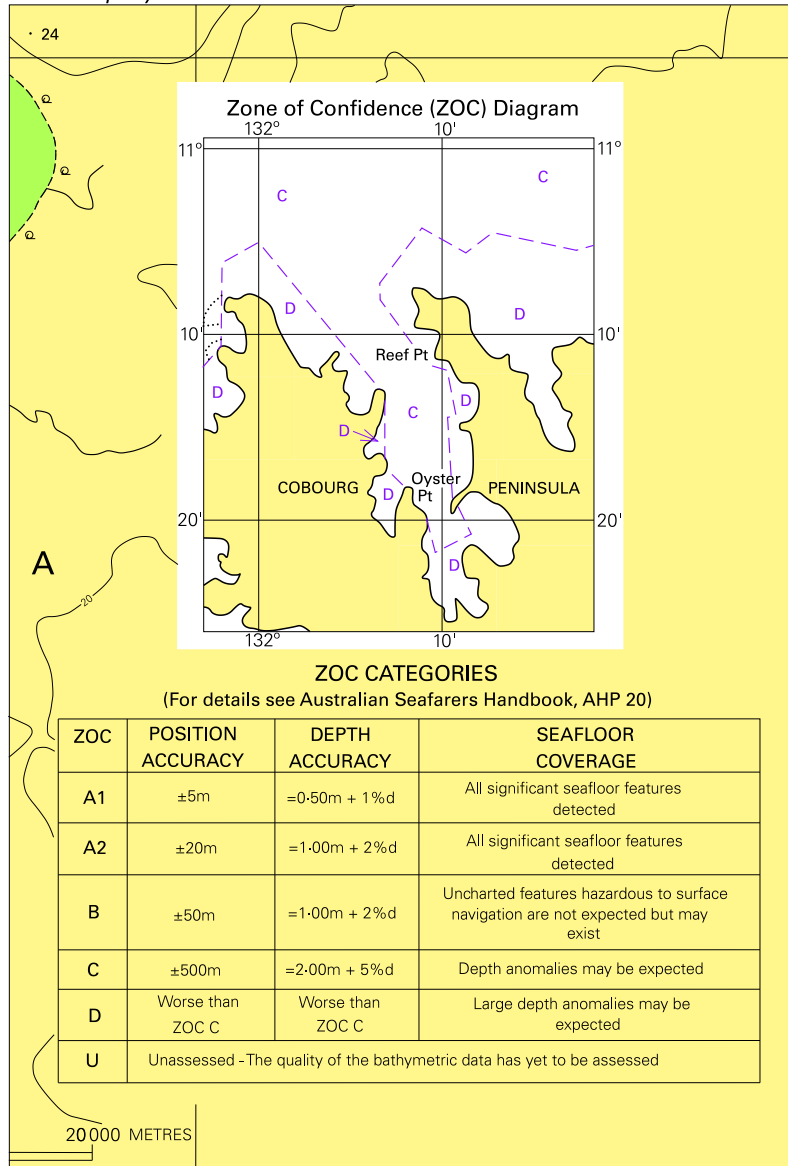


Block for chart Aus 308

© Commonwealth of Australia 2009

(128.5 x 29.1)

To accompany Australian Notice to Mariners 300/2009

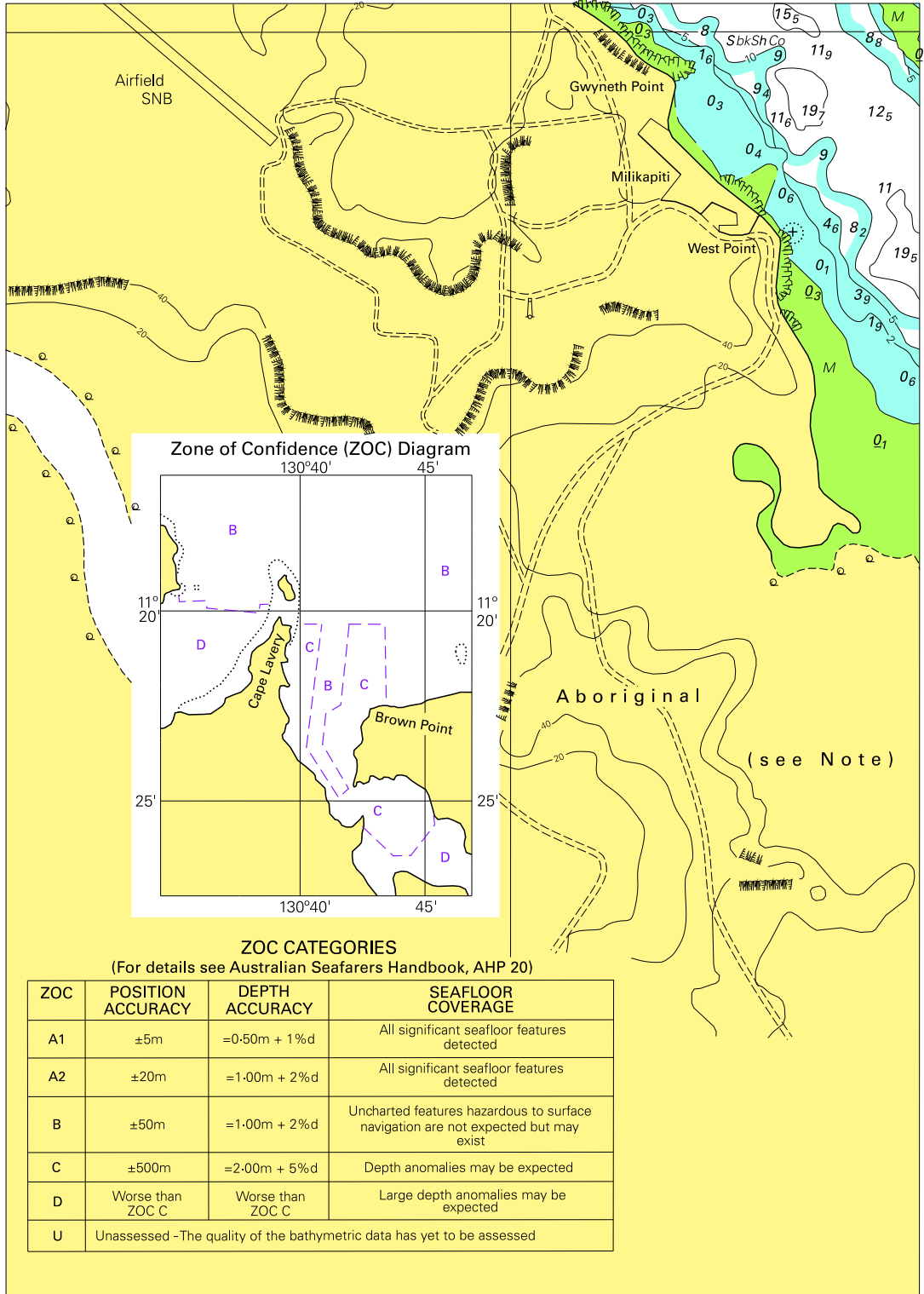


Block for chart Aus 18

© Commonwealth of Australia 2009

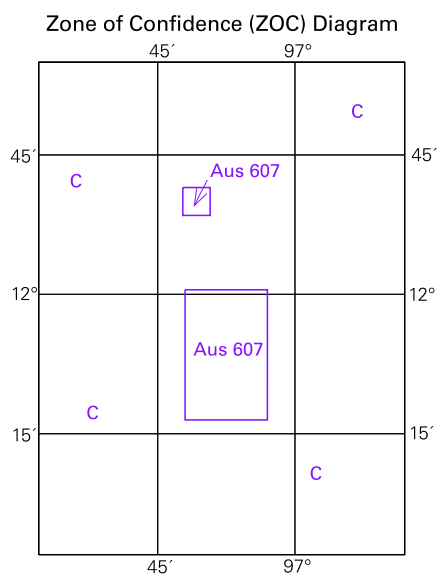
(104.4 x 154.6mm)

To accompany Australian Notice to Mariners 301/2009



To accompany Australian Notice to Mariners 305/2009

3999

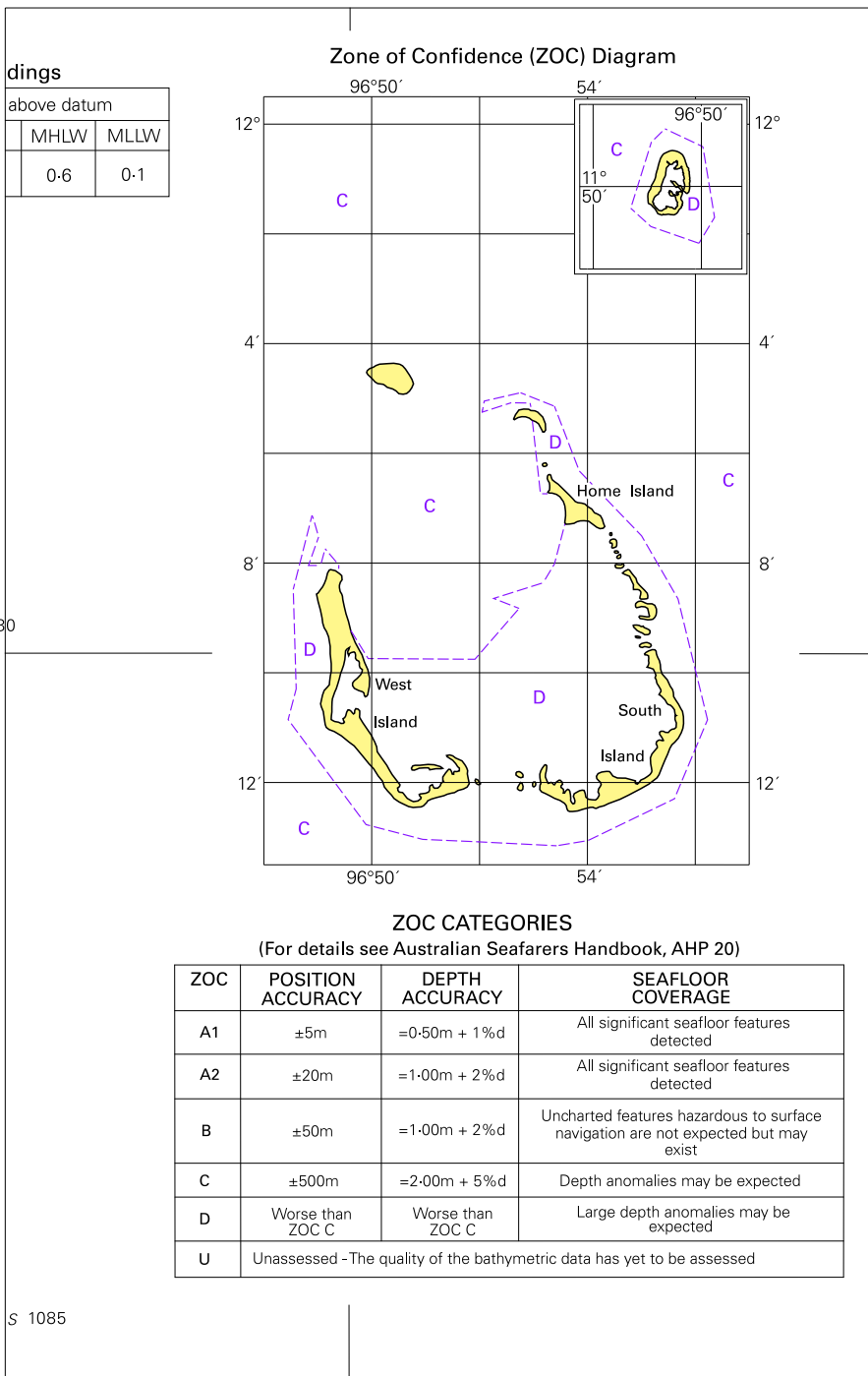


**ZOC CATEGORIES**

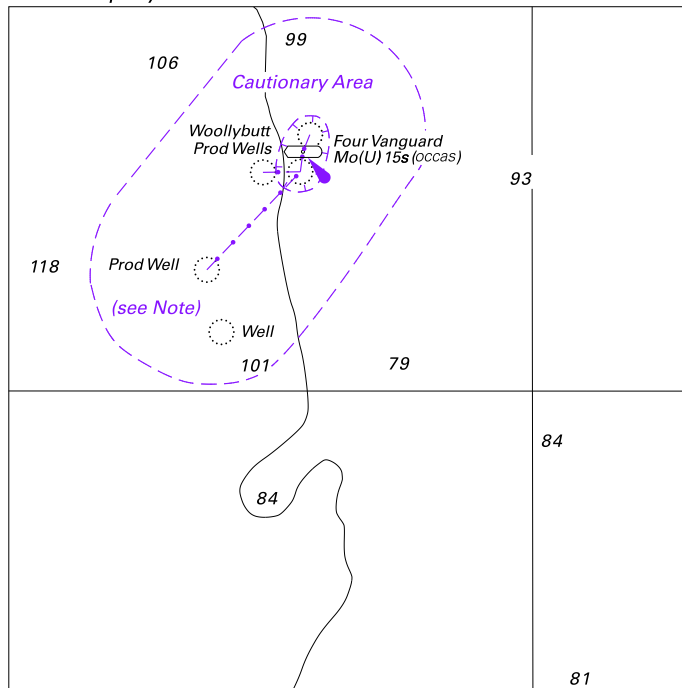
(For details see Australian Seafarers Handbook, AHP 20)

ZOC	POSITION ACCURACY	DEPTH ACCURACY	SEAFLOOR COVERAGE
A1	±5m	=0.50m + 1%d	All significant seafloor features detected
A2	±20m	=1.00m + 2%d	All significant seafloor features detected
B	±50m	=1.00m + 2%d	Uncharted features hazardous to surface navigation are not expected but may exist
C	±500m	=2.00m + 5%d	Depth anomalies may be expected
D	Worse than ZOC C	Worse than ZOC C	Large depth anomalies may be expected
U	Unassessed - The quality of the bathymetric data has yet to be assessed		

To accompany Australian Notice to Mariners 305/2009



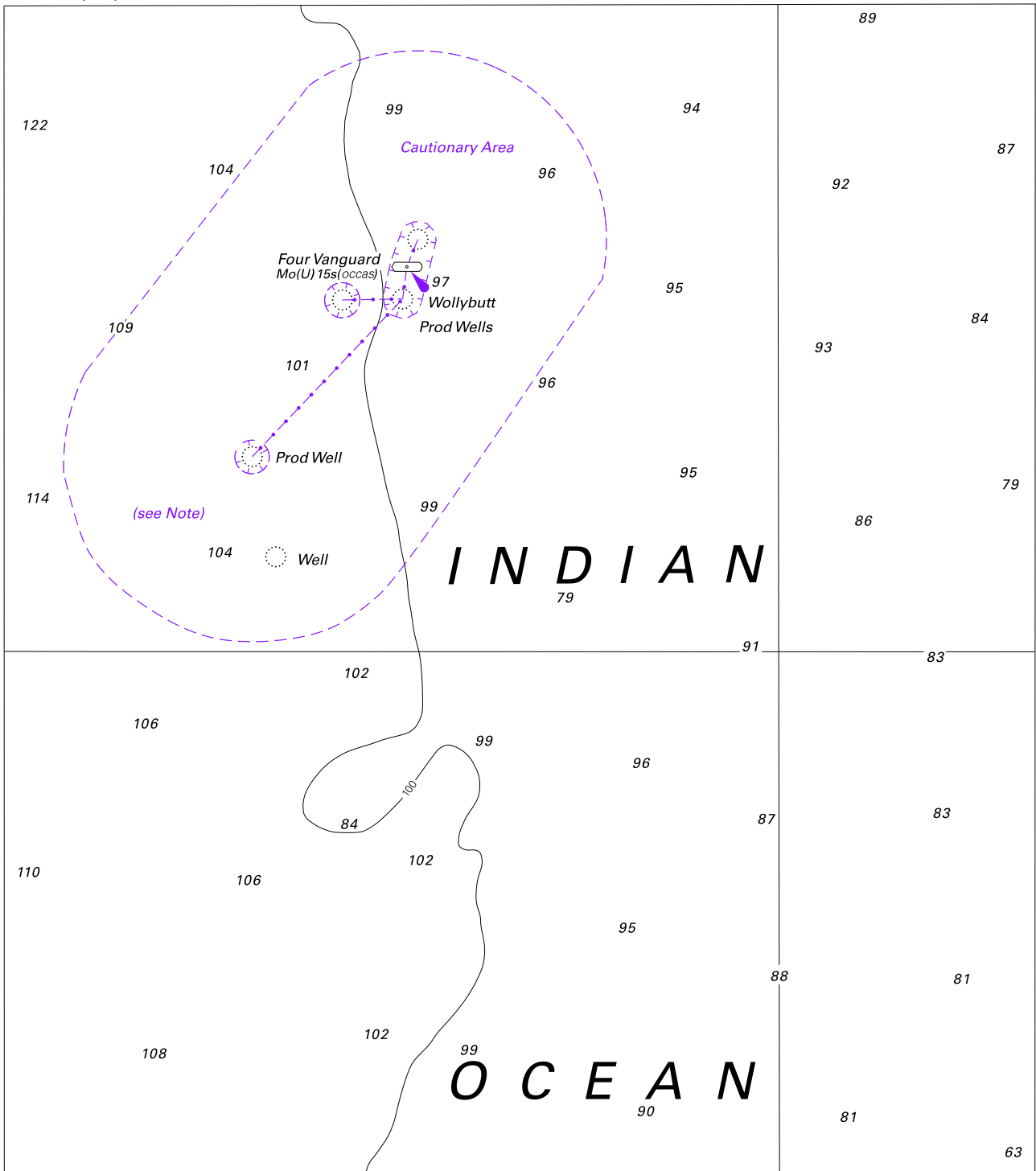
To accompany Australian Notice to Mariners 306/2009



© Commonwealth of Australia 2009 (90.5 x 90.7mm)

Block for chart Aus 328

To accompany Australian Notice to Mariners 306/2009

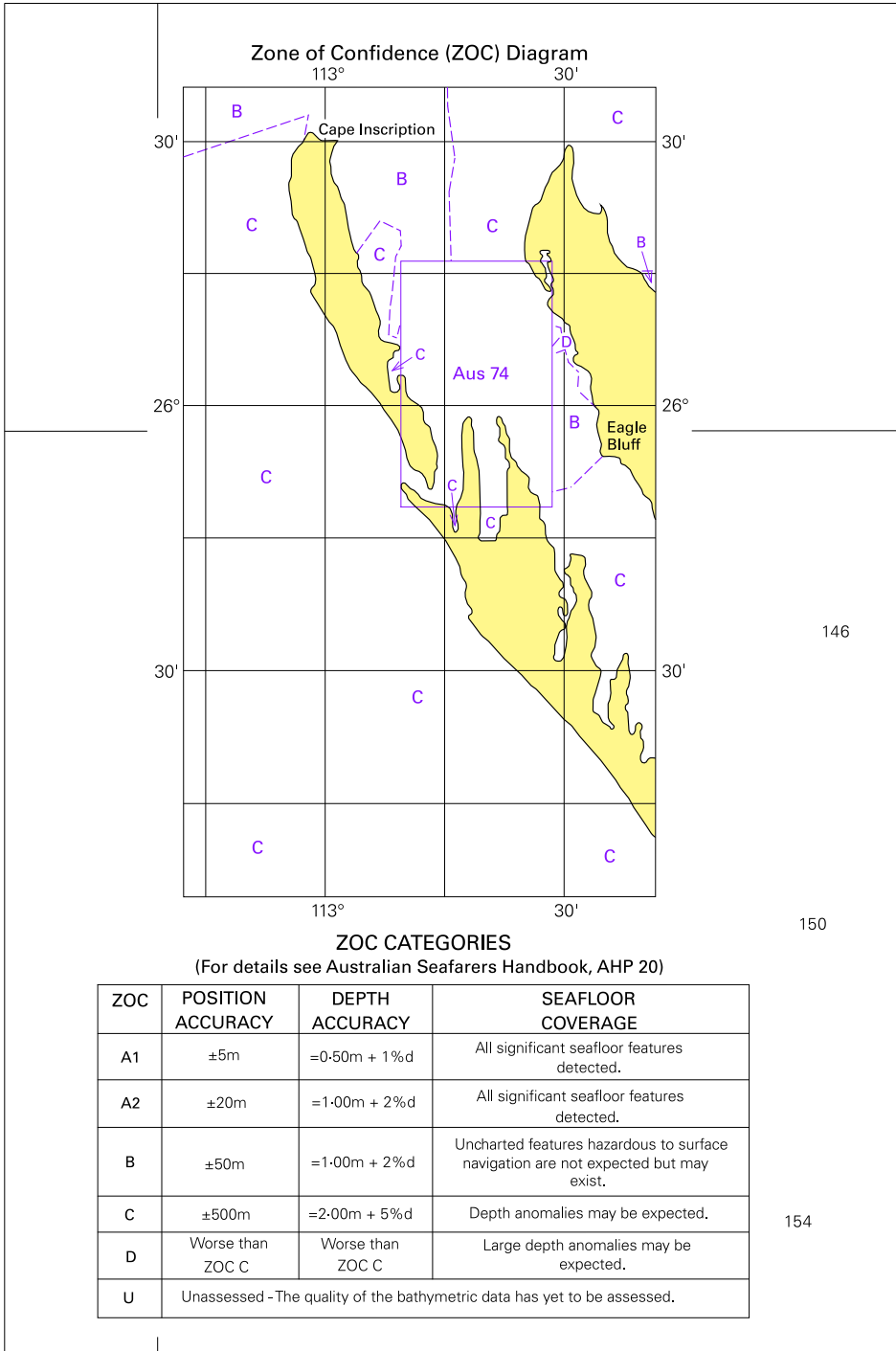


Block for chart Aus 743

© Commonwealth of Australia 2009

(169.5 x 192.2mm)

To accompany Australian Notice to Mariners 307/2009



146

150

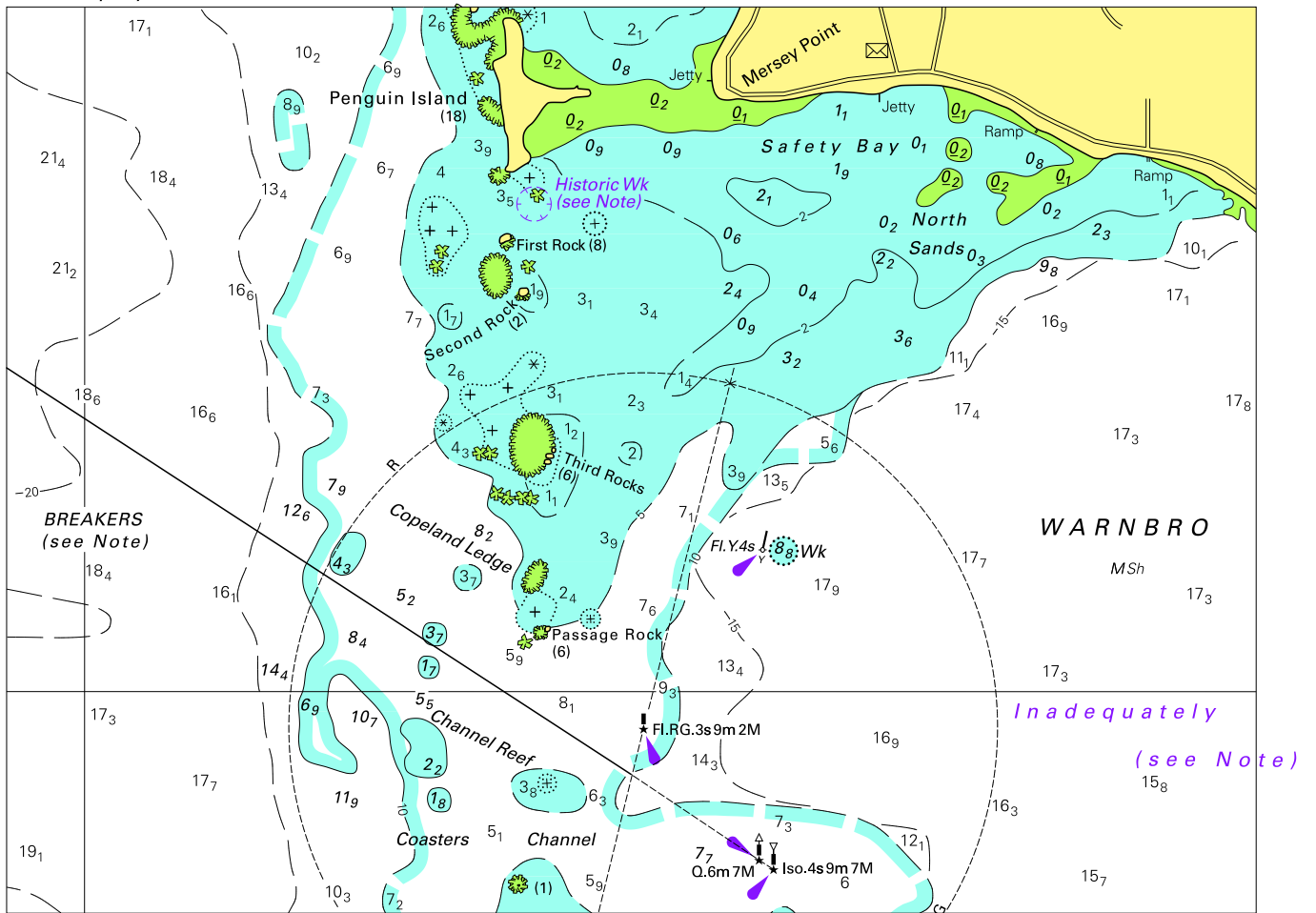
154

© Commonwealth of Australia 2009

Block for chart Aus 749

(123.3 x 186.4mm)

To accompany Australian Notice to Mariners 308/2009

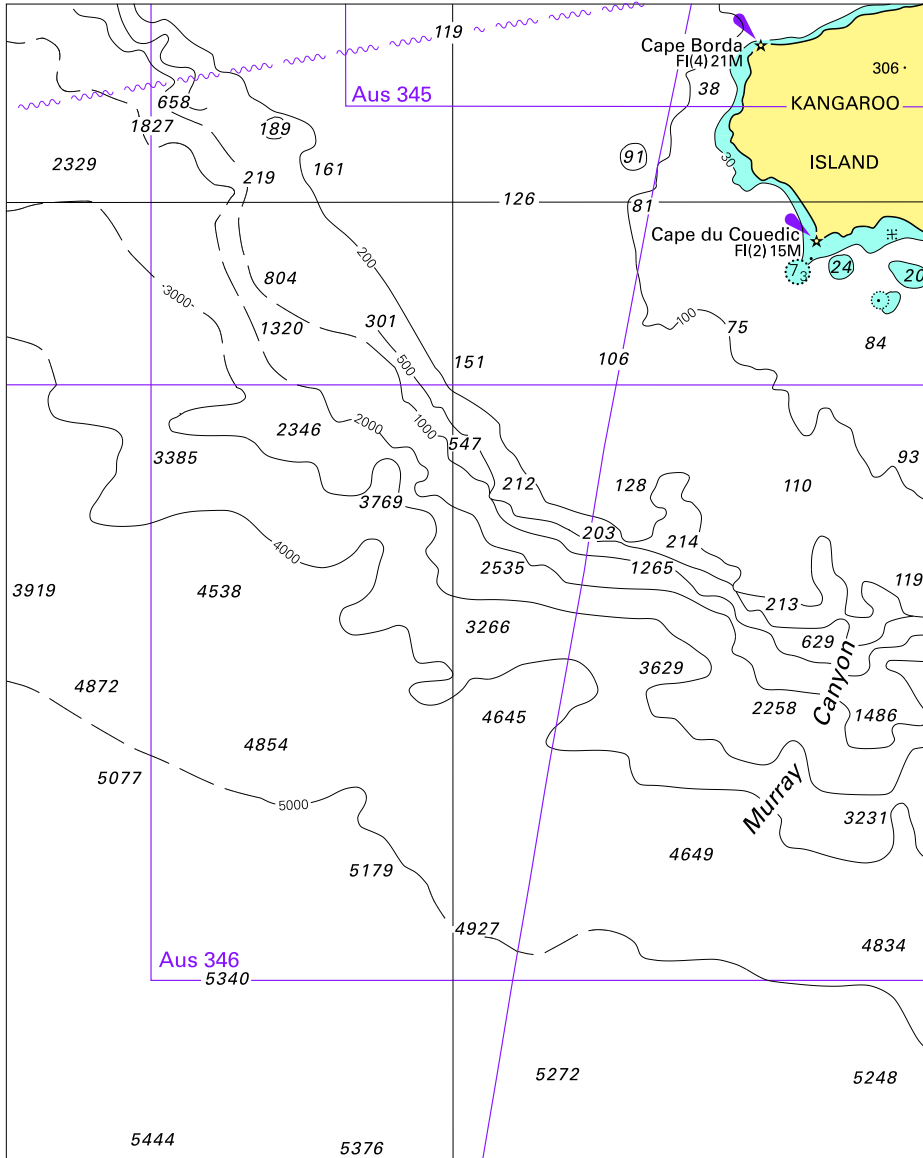


Block for chart Aus 116

© Commonwealth of Australia

(173.4 x 124.6mm)

To accompany Australian Notice to Mariners 311/2009



Block for chart Aus 4727

© Commonwealth of Australia 2009

(122.3 x 152.9mm)