



Australian Notices to Mariners are the authority for correcting Australian Charts and Publications

AUSTRALIAN NOTICES TO MARINERS

Notices 179 - 231 

Published fortnightly by the Australian Hydrographic Service

Commodore R. NAIRN RAN
Hydrographer of Australia

-
- SECTIONS.**
- I. **Australian Notices to Mariners, including blocks and notes.**
 - II. **Hydrographic Reports.**
 - III. **Navigational Warnings.**

For Notices affecting Admiralty List of Lights and Fog Signals; List of Radio Signals; and Sailing Directions see **British Notices to Mariners.**

The substance of these notices should be inserted on the charts affected.

Bearings are referred to the true compass and are reckoned clockwise from North; those relating to lights are given as seen by an observer from seaward. Positions quoted in permanent notices relate to the horizontal datum for the chart(s). When preliminary or temporary notices affect multiple charts, positions will be provided in relation to only one horizontal datum and that datum will be specified. When the multiple charts do not have a common horizontal datum, mariners will be required to adjust the position(s) for those charts not on the specified datum. The range quoted for a light is its nominal range. Depths are with reference to the chart datum of each chart. Heights are above mean high water springs or mean higher high water, as appropriate.

The capital letter (P) or (T) after the number of any notice denotes a preliminary or temporary notice respectively, which are contained separately at the end of the permanent notices. A star () adjacent to the number of a notice indicates that the notice is based on original information.*

Mariners are particularly requested to notify the AUSTRALIAN HYDROGRAPHIC SERVICE, Locked Bag 8801 Wollongong, NSW 2500 (Fax 02-4223 6599, e-mail Hydro.NTM@defence.gov.au or, alternatively by filling in and submitting the [Hydrographic Notes](#) forms located on the web site – www.hydro.gov.au), immediately on the discovery of new dangers or suspected dangers to navigation. For changes or defects in aids to navigation notify AusSAR (Fax 02-6230 6868 or email rccaus@amsa.gov.au).

Copies of Australian notices are available free of charge from the Australian Hydrographic Service (AHS) website (www.hydro.gov.au) and through the eNotices (email) service (www.hydro.gov.au/enotices/enotices.htm).

Individual Notices may be copied for the purpose of inserting Notice substance on official charts and publications. Paper copies may be printed by chart agents and distributed to customers on a cost recovery basis. Participating chart agents are listed on the AHS website as providing a 'Paper Notices to Mariners' service (www.hydro.gov.au/prodserv/distributors/distributors.htm). Copies of the notices may not be sold for profit without prior written agreement.

IMPORTANT NOTICE

This edition of Notices to Mariners includes all significant information affecting AHS products which the AHS has become aware of since the last edition. All reasonable efforts have been made to ensure the accuracy and completeness of the information, including third party information, on which these updates are based. The AHS regards third parties from which it receives information as reliable, however the AHS cannot verify all such information and errors may therefore exist. The AHS does not accept liability for errors in third party information.

© Commonwealth of Australia 2009

This work is copyright. Apart from any use permitted under the Copyright Act 1968, no part may be reproduced by any process, adapted, communicated or commercially exploited without prior written permission from The Commonwealth represented by the Australian Hydrographic Service.

NUMERICAL INDEX OF NOTICES TO MARINERS

Edition No 3

13 February 2009

Notices	Aus Chart, INT Chart, ENC Cell, AHP
179.....	Aus 4, 23, 57, 58, 299, 344, 701
180.....	Amendment to Australian Notice to Mariners No 2
181.....	Amendment to Australian National Tide Tables 2009
182.....	Aus 809, AX 0809E
183.....	Aus 247, 366, 367, 818, 819, 820
184.....	Aus 245
185.....	Aus 247
186.....	Aus 824
187.....	Aus 255
188.....	Aus 257
189.....	Aus 834, 835, 836
190.....	Aus 621
191.....	Aus 379, 505
192.....	Aus 680
193.....	Aus 554
194.....	Aus 462, 4603, 4604, 4622, AX 4603F, 4604F, INT 603, 604, 622
195.....	Aus 4721, AX 4721F, INT 721
196.....	Aus 309, AX 0309F, 72309
197.....	Aus 32
198.....	Aus 73
199.....	Aus 112, AX 63112
200.....	Aus 130, 335, 336, 343, AX 0343E
201.....	Aus 122
202.....	Aus 343, 345, 444, 4727, AX 0343E, INT 727
203.....	Aus 169
204.....	Aus 151, 152
205.....	Aus 422, 487, 801, 802
206.....	Aus 181
207.....	Aus 182
208(T).....	Aus 808, AX 0808E, AU435151
209(T).....	Aus 813, 814, AU429153
210(T).....	Aus 236
211(T).....	Aus 236, AU5237X8
212(T).....	Aus 236
213(T).....	Aus 247, 819, AU424150, 5247P1
214(T).....	Aus 252, 253, 268, AU5268P2
215(T).....	Aus 258, 259, 828, AU419146, 5258P2, 5259P1
216(T).....	Aus 830, AU417145
217(T).....	Aus 293, 299, AU5XX299
218(T).....	Aus 4, 701, AU413141
219(T).....	Aus 6
220(T).....	Aus 6
221(T).....	Aus 6
222(T).....	Aus 24, AU5XXX24
223(T).....	Aus 312, 4721, AX 0312F, 4721F, AU311126, INT 721
224(T).....	Aus 57, 58, 59, 327, 328, 415, 416, 741, 742, AX 0415F, AU421115, 421116
225(T).....	Aus 57, 58, 59, 327, 328, 741, 742, AU320115, 421115, 421116
226(T).....	Aus 109, AU5XX109
227(T).....	Aus 125
228(T).....	Aus 167, AU5167X8
229(T).....	Aus 143, 155, AU438144
230(T).....	Aus 154, AU5XX154
231(T).....	Aus 150, 151, 152, AU5152P1

ENC Cell	Notices
AU311126	223(T)
AU320115	225(T)
AU413141	218(T)
AU417145	216(T)
AU419146	215(T)
AU421115	224(T), 225(T)
AU421116	224(T), 225(T)
AU424150	213(T)
AU429153	209(T)
AU435151	208(T)
AU438144	229(T)
AU5152P1	231(T)
AU5167X8	228(T)
AU5237X8	211(T)
AU5247P1	213(T)
AU5258P2	215(T)
AU5259P1	215(T)
AU5268P2	214(T)
AU5XX109	226(T)
AU5XX154	230(T)
AU5XX299	217(T)
AU5XXX24	222(T)

179 AUSTRALIA - Product

Australian Hydrographic Service (AA383027, AA382687)

New Chart to be published shortly

<i>Chart</i>	<i>Title</i>	<i>Scale</i>	<i>Expected Publication Date</i>	<i>Expected Stock Availability</i>
Aus 23	Australia - North Coast - Northern Territory - Apsley Strait (Southern Sheet)	1:50 000	13 February 2009	23 March 2009

New Edition to be published shortly

<i>Chart</i>	<i>Title</i>	<i>Scale</i>	<i>Expected Publication Date</i>	<i>Expected Stock Availability</i>
Aus 4	Australia - North Coast - Queensland - Approaches to Weipa	1:75 000	13 February 2009	23 March 2009
Aus 57	Australia - North West Coast - Western Australia - Dampier Archipelago	1:75 000	13 February 2009	23 March 2009
Aus 58	Australia - North West Coast - Western Australia - Port of Dampier	1:37 500	13 February 2009	23 March 2009
Aus 299	Australia - North Coast - Torres Strait - Approaches to Thursday Island	1:12 500	13 February 2009	23 March 2009
Aus 701	Australia - North Coast - Queensland - Vrilya Point to Duyfken Point	1:150 000	13 February 2009	23 March 2009

Chart permanently withdrawn without replacement

Chart
Aus 344

For further details refer to the AHS website at www.hydro.gov.au for new edition and new chart stock arrival information.

When placing orders with a chart agent, mariners should advise whether their order pertains to the current edition or the new edition.

180 AUSTRALIA - Product - Amendment to Australian Notice to Mariners No 2

Australian Hydrographic Service (AA382297)

Page 16

Amend email address for Cornes and Co Ltd Yokohama to read sales6121@ykh.cornes.co.jp

Amend email address for Cornes and Co Ltd Kobe to read sales6151@kobe.cornes.co.jp

181 AUSTRALIA - Product - Amendment to Australian National Tide Tables 2009

Australian Hydrographic Service (AA382916, AA382917, AA383434)

Page xxx

Insert Carnarvon To Chart Datum AUS 73 NC 7 NOV 2008 0.0

Page 308

Amend Cape Voltaire details to read:

63001 Cape Voltaire 7.7 6.6 4.4 3.8 3.2 1.0

Amend East Holothuria Reef MEAN TIME DIFFERENCE to +0051

Pages 314-315

Insert accompanying table for Suai

Page 392

Amend Cape Voltaire ZO to 3.82

Pages 392-393

Insert accompanying table for East Holothuria Reef

13 February 2009

181 AUSTRALIA - Product - Amendment to Australian National Tide Tables 2009 (continued)

Pages 400-401

Insert accompanying table for Port Essington**182* AUSTRALIA - NEW SOUTH WALES - Swansea - Light buoys**

NSW Maritime (AA299449, AA378889, AA381394)

Aus 809 (plan, Lake Macquarie Entrance) [36/2009]

<i>Insert</i>	starboard conical light buoy, <i>Fl.G.</i> 3s, without topmark	33° 04'.762 S	151° 38'.283 E
	special spar light buoy, <i>Fl.Y.</i> 2s, without topmark	33° 04'.220 S	151° 38'.420 E

AX 0809E (plan, Lake Macquarie Entrance) [36/2009]

<i>Insert</i>	starboard conical light buoy, <i>Fl.G.</i> 3s, without topmark	33° 04'.762 S	151° 38'.283 E
	special spar light buoy, <i>Fl.Y.</i> 2s, without topmark	33° 04'.220 S	151° 38'.420 E

183* AUSTRALIA - QUEENSLAND - Bundaberg to Keppel Bay - Wrecks

T Jackson (AA380509, AA380510)

Aus 247 [1268/2008]

<i>Substitute</i>	safe clearance depth, 20m, enclosed by danger circle with legend <i>Wk</i> for wreck	23° 12'.1 S	151° 15'.3 E
-------------------	--	-------------	--------------

Aus 366 [688/2008]

<i>Insert</i>	safe clearance depth, 13fm, enclosed by danger circle with legend <i>Wk</i>	23° 29'.79 S	151° 25'.51 E
	safe clearance depth, 9 ₅ fm, enclosed by danger circle with legend <i>Wk</i>	23° 40'.99 S	151° 25'.93 E
	safe clearance depth, 5 ₃ fm, enclosed by danger circle with legend <i>Wk</i>	24° 26'.62 S	152° 06'.77 E

<i>Substitute</i>	safe clearance depth, 11fm, enclosed by danger circle with legend <i>Wk</i> for wreck	23° 12'.0 S	151° 15'.3 E
	safe clearance depth, 13fm, enclosed by danger circle with legend <i>Wk</i> for wreck	23° 45'.0 S	151° 59'.3 E

Aus 367 [1269/2008]

<i>Substitute</i>	safe clearance depth, 20m, enclosed by danger circle with legend <i>Wk</i> for wreck	23° 12'.1 S	151° 15'.3 E
-------------------	--	-------------	--------------

Aus 818 [724/2008]

<i>Insert</i>	safe clearance depth, 10m, enclosed by danger circle with legend <i>Wk</i>	24° 26'.52 S	152° 06'.75 E
---------------	--	--------------	---------------

<i>Delete</i>	depth, 16 ₄ m	24° 26'.2 S	152° 06'.3 E
---------------	--------------------------	-------------	--------------

Aus 819 [1118/2008]

<i>Insert</i>	safe clearance depth, 25m, enclosed by danger circle with legend <i>Wk</i>	23° 29'.69 S	151° 25'.49 E
	safe clearance depth, 18m, enclosed by danger circle with legend <i>Wk</i>	23° 40'.89 S	151° 25'.91 E
	safe clearance depth, 25m, enclosed by danger circle with legend <i>Wk</i>	23° 44'.87 S	151° 59'.30 E

<i>Substitute</i>	safe clearance depth, 20m, enclosed by danger circle with legend <i>Wk</i> for wreck	23° 12'.1 S	151° 15'.3 E
-------------------	--	-------------	--------------

<i>Delete</i>	depth, 21 ₃ m	23° 41'.2 S	151° 25'.9 E
	wreck	23° 44'.8 S	151° 59'.2 E

183* AUSTRALIA - QUEENSLAND - Bundaberg to Keppel Bay – Wrecks (*continued*)**Aus 820** [626/2008]

Substitute	safe clearance depth, 20m, enclosed by danger circle with legend <i>Wk</i> for wreck	23° 12'.1 S	151° 15'.3 E
------------	---	-------------	--------------

184* AUSTRALIA - QUEENSLAND - Gladstone - South Trees Point - Depths

Maritime Safety Queensland (DHDB 600991)

Aus 245 [1175/2008]

Insert	accompanying block	23° 51'.0 S	151° 20'.0 E
--------	--------------------	-------------	--------------

185* AUSTRALIA - QUEENSLAND - Great Keppel Island to Barren Island - Buoys

Maritime Safety Queensland Notice 54/2009 (AA382598)

Aus 247 [183/2009]

Insert	conical buoy, without topmark	23° 11'.68 S	150° 56'.19 E
	conical buoy, without topmark	23° 11'.83 S	150° 56'.23 E
	conical buoy, without topmark	23° 12'.92 S	150° 57'.77 E
	conical buoy, without topmark	23° 12'.70 S	150° 57'.94 E
	conical buoy, without topmark	23° 09'.34 S	151° 04'.37 E
Delete	depth, 1 ₂ m	23° 11'.6 S	150° 56'.2 E
	depth, 9 ₇ m	23° 12'.9 S	150° 57'.8 E
	depth, 2 ₇ m	23° 09'.3 S	151° 04'.4 E

186* AUSTRALIA - QUEENSLAND - Bailey Islet - Anchorages; historic wreck

Australian Hydrographic Service (AA369651)

Aus 824 [432/2008]

Insert	accompanying block	21° 02'.0 S	149° 35'.0 E
--------	--------------------	-------------	--------------

187* AUSTRALIA - QUEENSLAND - Abbot Point - Maintained depth

Maritime Safety Queensland (AA383254, AA383255)

Aus 255 (plan, Abbot Point Wharf) [NE 8/7/2005]

Amend	maintained depth to 19.1m	19° 51'.42 S	148° 05'.10 E
-------	---------------------------	--------------	---------------

188* AUSTRALIA - QUEENSLAND - Townsville - Ross River - Light buoy

Australian Hydrographic Service (AA383173)

Aus 257 [NE 21/11/2008]

Substitute	port lateral cylindrical light buoy, <i>Fl.R.</i> 3s, without topmark for light buoy	19° 16'.21 S	146° 50'.07 E
------------	---	--------------	---------------

189* AUSTRALIA - QUEENSLAND - Lloyd Island to Albatross Cove - Depths

P Bakker (AA382787)

Aus 834 [1272/2008]

Insert	depth, 3 ₄ m, enclosed by broken contour with legend <i>Rep (2009)</i>	12° 39'.95 S	143° 26'.01 E
	depth, 1 ₃ m, and extend broken contour NE to enclose with legend <i>Rep (2009)</i>	12° 45'.53 S	143° 24'.61 E

Aus 835 [1272/2008]

Insert	depth, 3 ₄ m, enclosed by broken contour with legend <i>Rep (2009)</i>	12° 39'.95 S	143° 26'.01 E
--------	--	--------------	---------------

Aus 836 [1272/2008]

Insert	depth, 3 ₄ m, enclosed by broken contour with legend <i>Rep (2009)</i>	12° 39'.95 S	143° 26'.01 E
--------	--	--------------	---------------

190* PAPUA NEW GUINEA - Port Moresby - ZOC diagram

Fugro Survey Pty Ltd (DHDB 845042)

Aus 621 [145/2009]

Substitute	accompanying ZOC diagram	9° 26'.5 S	147° 15'.0 E
------------	--------------------------	------------	--------------

191* PAPUA NEW GUINEA - Padana Nahua Passage - Depths; ZOC diagram

Fugro Survey Pty Ltd (DHDB 845042)

Aus 379 [283/2008]

Insert	accompanying block	9° 35'.0 S	147° 15'.0 E
--------	--------------------	------------	--------------

Aus 505 [144/2009]

Insert	accompanying block	9° 39'.0 S	147° 15'.0 E
--------	--------------------	------------	--------------

192* PAPUA NEW GUINEA - Blanche Bay - ZOC diagram

Australian Hydrographic Service (AA382477)

Aus 680 (plan, Simpson and Matupit Harbours) [733/2008]

Substitute	accompanying ZOC diagram for reliability diagram	4° 12'.0 S	152° 12'.0 E
------------	--	------------	--------------

193* PAPUA NEW GUINEA - New Ireland - Cape Erkokon - Depths

Australian Hydrographic Service (AA382477)

Aus 554 [146/2009]

Insert	accompanying block	3° 47'.0 S	152° 20'.5 E
--------	--------------------	------------	--------------

Substitute	accompanying ZOC diagram	4° 20'.0 S	152° 52'.0 E
------------	--------------------------	------------	--------------

194 PAPUA NEW GUINEA - Manus Island - Depth northeastwards

BA Notice 5/544/2009 (AA382217)

Aus 462 [49/2009]

Insert depth, 308fm 1° 03'.0 S 147° 52'.0 E

Aus 4603 (INT 603) [59/2009]

Insert depth, 563m, enclosed by contour 1° 03'.0 S 147° 52'.0 E

Aus 4604 (INT 604) [1121/2008]

Insert depth, 563m, enclosed by contour 1° 03'.0 S 147° 52'.0 E

Aus 4622 (INT 622) [49/2009]

Insert depth, 563m, enclosed by contour 1° 03'.0 S 147° 52'.0 E

AX 4603F [59/2009]

Insert depth, 563m, enclosed by contour 1° 03'.0 S 147° 52'.0 E

AX 4604F [NC 26/9/2008]

Insert depth, 563m, enclosed by contour 1° 03'.0 S 147° 52'.0 E

195* INDONESIA - Trangan to Lakor - Lights

Australian Hydrographic Service (AA382679, AA282194, AA282195, AA282198)

Aus 4721 (INT 721) [152/2009]

Insert	light characteristic, <i>Fl(2) 20M</i>	6° 50'.0 S	134° 47'.0 E
	light characteristic, <i>Fl(2) 20M</i>	7° 14'.0 S	131° 58'.0 E
	light characteristic, <i>Fl. 12M</i>	7° 38'.0 S	131° 37'.0 E
	light characteristic, <i>Fl(2) 20M</i>	8° 09'.0 S	131° 07'.0 E
	light characteristic, <i>Fl(2) 20M</i>	8° 15'.0 S	128° 10'.0 E

AX 4721F [152/2009]

Insert	light characteristic, <i>Fl(2) 20M</i>	6° 50'.0 S	134° 47'.0 E
	light characteristic, <i>Fl(2) 20M</i>	7° 14'.0 S	131° 58'.0 E
	light characteristic, <i>Fl. 12M</i>	7° 38'.0 S	131° 37'.0 E
	light characteristic, <i>Fl(2) 20M</i>	8° 09'.0 S	131° 07'.0 E
	light characteristic, <i>Fl(2) 20M</i>	8° 15'.0 S	128° 10'.0 E

196* AUSTRALIA - NORTHERN TERRITORY - Lorna Shoal - Depths

Australian Hydrographic Service (AA374703)

Aus 309 [151/2009]

Insert accompanying block 12° 30'.0 S 130° 00'.0 E

AX 0309F [151/2009]

Insert accompanying block 12° 30'.0 S 130° 00'.0 E

AX 72309 [151/2009]

Insert accompanying block 12° 30'.0 S 130° 00'.0 E

197* AUSTRALIA - WESTERN AUSTRALIA - Wyndham - Depths
Department for Planning and Infrastructure WA (DHDB 1119306)

Aus 32 (plan, Approaches to Wyndham Wharf) [1227/2008]

Insert	depth, 4 ₃ m, enclosed by contour	15° 18'.220 S	128° 06'.217 E
	depth, 4 ₄ m, enclosed by contour	15° 18'.179 S	128° 06'.049 E
	depth, 3 ₇ m, enclosed by contour	15° 18'.337 S	128° 06'.280 E
	depth, 2m, enclosed by contour	15° 20'.552 S	128° 05'.979 E
	depth, 1 ₃ m, enclosed by contour	15° 20'.777 S	128° 06'.020 E
	depth, 1 ₁ m, and extend 2m contour NE to enclose	15° 20'.771 S	128° 06'.565 E
Delete	depth, 5 ₁ m	15° 18'.16 S	128° 06'.02 E
	depth, 6 ₂ m	15° 20'.61 S	128° 05'.97 E

198* AUSTRALIA - WESTERN AUSTRALIA - Carnarvon - Teggs Channel - Light beacons
Department for Planning and Infrastructure WA (AA382811, AA382806)

Aus 73 (plan, Carnarvon) [NC 7/11/2008]

Substitute	starboard lateral light beacon, <i>Fl.G.3s No3</i> , without topmark for light buoy	24° 54'.37 S	113° 38'.00 E
	port lateral light beacon, <i>Fl.R.3s No6</i> , without topmark for light buoy	24° 54'.41 S	113° 38'.15 E

199* AUSTRALIA - WESTERN AUSTRALIA - Swanbourne - Buoy
Department for Planning and Infrastructure WA (AA382831)

Aus 112 [65/2009]

Insert	special spar buoy, without topmark	31° 59'.208 S	115° 44'.300 E
--------	------------------------------------	---------------	----------------

AX 63112 [65/2009]

Insert	special spar buoy, without topmark	31° 59'.208 S	115° 44'.300 E
--------	------------------------------------	---------------	----------------

200* AUSTRALIA - WESTERN AUSTRALIA - SOUTH AUSTRALIA - Fremantle to Adelaide - Submarine cable
Global Marine Systems (AA382165, DHDB 1168499)

Aus 130 [1079/2008]

Insert	disused submarine cable, between	34° 53'.73 S	138° 29'.22 E
		34° 54'.35 S	138° 27'.33 E
		34° 55'.70 S	138° 25'.64 E

Aus 335 [1287/2008]

Insert	disused submarine cable, between	35° 40'.50 S	116° 05'.55 E
		35° 32'.29 S	115° 35'.99 E
		35° 26'.02 S	115° 17'.81 E
		35° 12'.22 S	114° 33'.55 E
		35° 01'.15 S	114° 18'.99 E
		34° 53'.15 S	114° 11'.44 E
		34° 48'.04 S	114° 07'.15 E

Aus 336 [1287/2008]

Insert	disused submarine cable, between	35° 41'.15 S	118° 14'.82 E
		35° 45'.55 S	117° 32'.96 E
		35° 42'.45 S	116° 39'.30 E
		35° 42'.59 S	116° 15'.78 E
		35° 40'.50 S	116° 05'.55 E
		35° 32'.29 S	115° 35'.99 E
		35° 26'.02 S	115° 17'.81 E
		35° 22'.68 S	115° 07'.00 E

200* AUSTRALIA - WESTERN AUSTRALIA - SOUTH AUSTRALIA - Fremantle to Adelaide - Submarine cable (continued)**Aus 343 [1240/2008]**

Insert	disused submarine cable, between	35° 32'.68 S	137° 02'.00 E
		35° 33'.16 S	136° 53'.49 E
		35° 40'.43 S	136° 33'.57 E
		35° 43'.28 S	136° 04'.54 E
		35° 46'.21 S	135° 39'.51 E
		35° 47'.83 S	135° 30'.61 E
		35° 54'.31 S	134° 42'.38 E
		35° 52'.25 S	133° 54'.18 E

AX 0343E [1240/2008]

Insert	disused submarine cable, between	35° 32'.68 S	137° 02'.00 E
		35° 33'.16 S	136° 53'.49 E
		35° 40'.43 S	136° 33'.57 E
		35° 43'.28 S	136° 04'.54 E
		35° 46'.21 S	135° 39'.51 E
		35° 47'.83 S	135° 30'.61 E
		35° 54'.31 S	134° 42'.38 E
		35° 52'.25 S	133° 54'.18 E

201* AUSTRALIA - SOUTH AUSTRALIA - Cape Thevenard to Cape Vivonne - Light; light buoy

Australian Hydrographic Service (AA294643), UKHO (AA382904)

Aus 122 [NC 24/10/2008]

Insert	light with sector <i>White</i> 136° to 148° (12°)	32° 11'.754 S	133° 40'.755 E
Substitute	special pillar light buoy, <i>Fl. Y. 3s</i> , without topmark for light buoy	32° 08'.89 S	133° 38'.27 E

202* AUSTRALIA - SOUTH AUSTRALIA - Spencer Gulf - Chart limits; legends

Australian Hydrographic Service (AA383027)

Aus 343 [200/2009]

Delete	magenta legend, Adjoining Chart Aus 344, in N border	34° 40'.0 S	136° 27'.5 E
--------	--	-------------	--------------

Aus 345 [1240/2008]

Delete	magenta legend, Adjoining Chart Aus 344, in N border	34° 16'.0 S	136° 47'.5 E
--------	--	-------------	--------------

Aus 444 [700/2008]

Delete	magenta limits, with legends Aus 344, centred on	33° 42'.0 S	137° 11'.0 E
--------	--	-------------	--------------

Aus 4727 (INT 727) [1133/2008]

Delete	magenta limits, with legend Aus 344, centred on	34° 00'.0 S	136° 35'.0 E
--------	---	-------------	--------------

AX 0343E [200/2009]

Delete	magenta legend, Adjoining Chart Aus 344, in N border	34° 40'.0 S	136° 27'.5 E
--------	--	-------------	--------------

203* AUSTRALIA - TASMANIA - Georges Bay - Buoy
Marine and Safety Tasmania M7/2009 (AA380843)

Aus 169 (plan, Georges Bay) [701/2008]

Move	buoy	41° 16'.13 S	148° 20'.30 E
	to	41° 16'.188 S	148° 20'.278 E

204* AUSTRALIA - VICTORIA - Western Port - Hastings Bight - Depth
Patrick Ports Hasting (AA383186), UKHO (AA379583)

Aus 151 [72/2009]

Insert	depth, 12 ₈ m	38° 19'.928 S	145° 14'.301 E
--------	--------------------------	---------------	----------------

Delete	depth, 10 ₈ m	38° 20'.0 S	145° 14'.2 E
--------	--------------------------	-------------	--------------

Aus 152 (plan, Hastings Bight) [742/2008]

Insert	depth, 14 ₇ m, and extend contour S to enclose	38° 19'.994 S	145° 14'.196 E
--------	---	---------------	----------------

Delete	depth, 10 ₈ m	38° 19'.98 S	145° 14'.20 E
--------	--------------------------	--------------	---------------

205* AUSTRALIA - VICTORIA - Cape Liptrap - Light altered
Australian Maritime Safety Authority (AA306987, AA307052, AA373288)

Aus 422 [74/2009]

Amend	light range to 20M	38° 54'.4 S	145° 55'.3 E
-------	--------------------	-------------	--------------

Aus 487 [74/2009]

Amend	light range to 20M	38° 54'.4 S	145° 55'.3 E
-------	--------------------	-------------	--------------

Aus 801 [1290/2008]

Amend	light to Fl. 12s 107m 20M	38° 54'.4 S	145° 55'.3 E
-------	---------------------------	-------------	--------------

Aus 802 [74/2009]

Amend	light to Fl. 12s 107m 20M	38° 54'.5 S	145° 55'.2 E
-------	---------------------------	-------------	--------------

206* AUSTRALIA - VICTORIA - Port Albert - Low water line
Australian Hydrographic Service (AA383329)

Aus 181 [163/2009]

Insert	low water line, between	38° 41'.98 S	146° 39'.93 E
		38° 42'.03 S	146° 39'.72 E
		38° 42'.03 S	146° 39'.45 E

Delete	low water line, between	38° 42'.0 S	146° 39'.9 E
		38° 41'.9 S	146° 39'.5 E

207* AUSTRALIA - VICTORIA - Lakes Entrance - Depths
Gippsland Ports (AA379626)

Aus 182 (plan, Lakes Entrance) [1291/2008]

Insert	accompanying block	37° 53'.1 S	147° 58'.0 E
--------	--------------------	-------------	--------------

208(T)/2009 AUSTRALIA - NEW SOUTH WALES - Port Hacking - Scientific instrument southeastwards*Date* - Until 28 February 2010

Australian Maritime Safety Authority (AA384369)

A special light buoy, *Fl.Y.5s*, exists in position 34° 07'.15 S 151° 13'.60 E.**Chart temporarily affected - Aus 808 - AX 0808E - AU435151****209(T)/2009 AUSTRALIA - QUEENSLAND - Point Danger to Point Lookout - Scientific instruments***Former Notice* - 804(T)/2008 is cancelled

Maritime Safety Queensland Notice 66(T)/2009 (AA384363)

Special light buoys, *Fl(5)Y.20s*, exist in positions (WGS84 datum):

28° 10'.77 S 153° 34'.59 E

27° 57'.93 S 153° 26'.53 E

27° 28'.13 S 153° 37'.55 E.

Mariners are not to use these buoys as moorings.

Chart temporarily affected - Aus 813 - Aus 814 - AU429153**210(T)/2009 AUSTRALIA - QUEENSLAND - Moreton Bay - Russell Island - Harbour works***Date* - Until 13 March 2009

Maritime Safety Queensland Notice 69(T)/2009 (AA384448)

Harbour works are in progress at Russell Island barge ramps (27° 38'.72 S 153° 22'.93 E).

A barge is onsite and will monitor VHF Ch 13.

Chart temporarily affected - Aus 236**211(T)/2009 AUSTRALIA - QUEENSLAND - Moreton Bay - Manly - Harbour works; dredging operations***Former Notice* - 870(T)/2008 is cancelled*Date* - Until 31 May 2009

Maritime Safety Queensland Notice 514(T)/2008, 91(T)/2009 (AA354881, AA385859)

Harbour works and dredging operations associated with the marina redevelopment are in progress in Manly Boat Harbour (27° 27'.22 S 153° 11'.40 E).

The dredge *Ken Harvey*, MT *Sealion*, MT *Seahorse* and two spoil barges are onsite and will display appropriate lights and signals.The dredge has deployed six anchors, marked by light buoys, *Fl.Y.*Lit mooring buoys, *Q*, exist in positions 27° 26'.74 S 153° 12'.05 E and 27° 26'.70 S 153° 12'.14 E.

The western internal channel is closed for the duration of the works. Vessels requiring access to and from the harbour must use the eastern internal entrance.

Vessels transiting the channel during daylight hours, Monday to Friday, are to contact the dredge on VHF Ch 13 to request the mooring wires be lowered.

Mariners are advised to navigate with caution in the area.

Chart temporarily affected - Aus 236 - AU5237X8

212(T)/2009 AUSTRALIA - QUEENSLAND - Moreton Bay - Deception Bay - Wreck
 Maritime Safety Queensland Notice 73(T)/2009 (AA384345)

A wreck marked by a special buoy exists in position 27° 09'.17 S 153° 03'.88 E.

Mariners are advised to navigate with caution in the area.

Chart temporarily affected - Aus 236

213(T)/2009 AUSTRALIA - QUEENSLAND - Port Alma to Keppel Bay - Scientific instruments

Date - Until 9 March 2009

Maritime Safety Queensland Notice 52(T)/2009 (AA382599)

Scientific instruments exist as follows:

Position	Remarks
23° 22'.28 S 150° 58'.86 E	subsurface
23° 30'.89 S 150° 57'.07 E	subsurface
23° 34'.79 S 150° 52'.01 E	subsurface

Chart temporarily affected - Aus 247 - Aus 819 - AU424150 - AU5247P1

214(T)/2009 AUSTRALIA - QUEENSLAND - Airlie Beach - Muddy Bay - Wreck

Maritime Safety Queensland Notice 65(T)/2009 (AA384396)

A wreck marked by a special light buoy, *Fl.Y.3s*, exists in position 20° 15'.84 S 148° 43'.22 E.

Mariners are advised to navigate with caution in the area.

Chart temporarily affected - Aus 252 - Aus 253 - Aus 268 - AU5268P2

215(T)/2009 AUSTRALIA - QUEENSLAND - Hinchinbrook Channel - Nav aids off station

Maritime Safety Queensland Notice 75(T)/2009 (AA384461)

Nav aids in the Hinchinbrook Channel may be off station.

Mariners are advised to navigate with caution in the area.

Chart temporarily affected - Aus 258 - Aus 259 - Aus 828 - AU419146 - AU5258P2 - AU5259P1

216(T)/2009 AUSTRALIA - QUEENSLAND - Double Island - Scientific instrument

Former Notice - 1249(T)/2008 is cancelled

Maritime Safety Queensland Notice 66(T)/2009 (AA384363)

A special light buoy, *Fl(5)Y.20s*, exists in position 16° 43'.98 S 145° 42'.65 E.

Mariners are not to use this buoy as a mooring.

Chart temporarily affected - Aus 830 - AU417145

217(T)/2009 AUSTRALIA - QUEENSLAND - Thursday Island - Madge Reefs - Light unlit

Maritime Safety Queensland Notice 62(T)/2009 (AA384459)

The light, *Fl.G.2.5s*, (10° 35'.71 S 142° 13'.24 E (WGS84 datum)) is unlit.

Chart temporarily affected - Aus 293 - Aus 299 - AU5XX299

218(T)/2009 AUSTRALIA - QUEENSLAND - Albatross Bay - Scientific instrument*Former Notice - 1317(T)/2008 is cancelled*

Maritime Safety Queensland Notice 66(T)/2009 (AA384363)

A special light buoy, *Fl(5)Y.20s*, exists in position (WGS84 datum) 12° 41'.29 S 141° 41'.12 E.

Mariners are not to use this buoy as a mooring.

Chart temporarily affected - Aus 4 - Aus 701 - AU413141**219(T)/2009 AUSTRALIA - QUEENSLAND - Karumba - Alligator Point - Light beacon destroyed**

Maritime Safety Queensland Notice 57(T)/2009 (AA382859)

The special light beacon, *Fl.Y.2.5s*, (17° 27'.58 S 140° 48'.27 E) has been destroyed.**Chart temporarily affected - Aus 6****220(T)/2009 AUSTRALIA - QUEENSLAND - Karumba - Light buoy off station**

Maritime Safety Queensland Notice 58(T)/2009 (AA382857)

The lit mooring buoy, *Q.R.*, (17° 29'.52 S 140° 49'.82 E) is off station.**Chart temporarily affected - Aus 6****221(T)/2009 AUSTRALIA - QUEENSLAND - Karumba - Light buoy off station**

Maritime Safety Queensland Notice 59(T)/2009 (AA382858)

The special light buoy, *Fl.Y.4s*, (17° 28'.75 S 140° 50'.19 E) is in position 17° 28'.29 S 140° 49'.79 E.**Chart temporarily affected - Aus 6****222(T)/2009 AUSTRALIA - NORTHERN TERRITORY - Darwin - Cullen Bay - Light buoy off station**

Darwin Port Corporation (AA384605)

The port lateral light buoy, *Q.R.*, (12° 27'.11 S 130° 48'.84 E) is off station.**Chart temporarily affected - Aus 24 - AU5XXX24****223(T)/2009 AUSTRALIA - TIMOR SEA - Sahul Banks - Navaid; racon non operational***Former Notice - 671(T)/2008 is cancelled*

Modem Management Services (AA384494)

A lit riser turret mooring exists in position 10° 52'.50 S 126° 34'.19 E. The racon is non operational.

Chart temporarily affected - Aus 312 - AX 0312F - AX 4721F - Aus 4721(INT 721) - AU311126

224(T)/2009 AUSTRALIA - WESTERN AUSTRALIA - Rankin Bank to Dampier - Production wells; platform; pipeline to be established

Date - Until 31 October 2009

Woodside Energy Ltd (AA384702, AA384703, AA384705 - AA384707, AA384803, AA384804, AA385860)

Pluto platform will be established in position 19° 59'.78 S 115° 22'.09 E.

A production well will be established in position 19° 54'.85 S 115° 07'.92 E.

A pipeline will be laid by PV *Audacia* and pipeline barge *Tog Mor* between:

19° 54'.85 S 115° 07'.92 E
 19° 58'.14 S 115° 11'.16 E
 19° 59'.78 S 115° 22'.09 E
 19° 58'.90 S 115° 25'.77 E
 20° 02'.13 S 115° 28'.32 E
 20° 02'.99 S 115° 31'.90 E
 20° 08'.18 S 115° 54'.94 E
 20° 10'.27 S 115° 59'.67 E
 20° 10'.35 S 116° 04'.83 E
 20° 19'.01 S 116° 39'.89 E
 20° 24'.52 S 116° 45'.86 E
 20° 35'.35 S 116° 44'.55 E
 20° 36'.42 S 116° 45'.38 E

Chart temporarily affected - Aus 57 - Aus 58 - Aus 59 - Aus 327 - Aus 328 - Aus 415 - Aus 416 - Aus 741 - Aus 742 - AX 0415F - AU320115 - AU421115 - AU421116**225(T)/2009 AUSTRALIA - WESTERN AUSTRALIA - Rankin Bank to Dampier - Scientific instruments**

Date - Until 28 February 2010

MetOcean Engineers (AA384862)

Scientific instruments exist as follows:

<i>Position (WGS84 datum)</i>	<i>Remarks</i>
19° 59'.35 S 115° 11'.03 E	lit buoy, <i>Fl. Y.20s</i>
20° 01'.99 S 115° 25'.37 E	lit buoy, <i>Fl. Y.20s</i>
20° 02'.06 S 115° 25'.24 E	5 poly-floats
20° 18'.42 S 116° 32'.94 E	lit buoy, <i>Fl. Y.20s</i>
20° 18'.44 S 116° 32'.84 E	5 poly-floats
20° 22'.31 S 116° 46'.57 E	lit buoy, <i>Fl. Y.20s</i>
20° 22'.35 S 116° 46'.47 E	5 poly-floats
20° 33'.90 S 116° 44'.03 E	5 poly-floats
20° 33'.91 S 116° 44'.06 E	lit buoy, <i>Fl. Y.20s</i>

Chart temporarily affected - Aus 57 - Aus 58 - Aus 59 - Aus 327 - Aus 328 - Aus 741 - Aus 742 - AU320115 - AU421115 - AU421116

226(T)/2009 AUSTRALIA - WESTERN AUSTRALIA - Albany - Dredging operations

Former Notice - 762(T)/2008 is cancelled

Date - Until 31 March 2009

Albany Port Authority Notice 1(T)/2009 (AA384588)

The dredge *Cooper II* is conducting dredging operations in an area bounded by the following positions:

35° 02'.08 S 117° 53'.66 E

35° 02'.20 S 117° 54'.72 E

35° 02'.36 S 117° 54'.72 E

35° 02'.53 S 117° 54'.25 E

35° 02'.19 S 117° 53'.58 E

A floating pipeline is connected to the barge and is marked by white flashing lights along its length.

The dredge will display the appropriate lights and signals.

Chart temporarily affected - Aus 109 - AU5XX109**227(T)/2009 AUSTRALIA - SOUTH AUSTRALIA - O'Sullivan Beach - Dredging operations**

Date - Until 14 April 2009

Department for Transport, Energy and Infrastructure SA Notice 2/2009 (AA382215)

Dredging operations are in progress at O'Sullivan Beach boat haven (35° 07'.17 S 138° 28'.03 E (WGS84 datum)).

The dredge, *MARCON*, will monitor VHF Ch 14 and will display appropriate lights and shapes.

A floating pipeline is connected to the barge and is marked by buoys.

Mariners are advised to navigate with caution in the area.

Chart temporarily affected - Aus 125**228(T)/2009 AUSTRALIA - TASMANIA - Port Dalrymple - Bell Bay - Drilling operations**

Marine and Safety Tasmania M24/2009 (AA385568)

Drilling operations are in progress north of the line defined by the following positions:

41° 08'.37 S 146° 50'.72 E

41° 08'.44 S 146° 50'.97 E

41° 08'.39 S 146° 51'.24 E.

The barge will deploy anchor cables extending for a distance of 200m.

Mariners are advised to navigate with caution in the area.

Chart temporarily affected - Aus 167 - AU5167X8

229(T)/2009 AUSTRALIA - VICTORIA - Port Phillip - Port Melbourne Channel - Dredging operations; construction works*Date - Until 31 August 2009*

Victorian Notice 17(T)/2008 (AA384827)

Dredging operations and construction works are in progress in Port Melbourne Channel bounded by the following positions:

37° 57'.14 S 144° 55'.40 E

37° 57'.05 S 144° 55'.41 E

37° 57'.14 S 144° 55'.57 E

37° 57'.23 S 144° 55'.57 E.

Vessels, *Storken* and *Goomai*, and workboats are onsite and will monitor VHF Ch 12.

A west cardinal light buoy, VQ(9)10s, exists in position 37° 57'.14 S 144° 55'.40 E and an east cardinal light buoy, VQ(3)5s, exists in position 37° 57'.14 S 144° 55'.57 E.

The area is prohibited during the dredging operations and works. The recommended track is west of the construction area.

Information about the operation and location of the dredges can be obtained from Melbourne VTS on VHF Ch 12.

Mariners are advised to navigate with caution in the area.

Chart temporarily affected - Aus 143 - Aus 155 - AU438144**230(T)/2009 AUSTRALIA - VICTORIA - Port Phillip - Port Melbourne - Depth information***Former Notice - 1088(T)/2007 is cancelled*

Port of Melbourne Corporation (AA384611)

Available depths as at 6 February 2009:

<i>Berth</i>	<i>Metres</i>
Station Pier Inner West	8.0

Chart temporarily affected - Aus 154 - AU5XX154**231(T)/2009 AUSTRALIA - VICTORIA - Western Port - Hastings Bight - Drilling operations***Date - Until 13March2009*

Victorian Notice 19(T)/2009 (AA38482)

Drilling operations are in progress in an area bounded by the following positions:

38° 17'.3 S 145° 13'.7 E

38° 17'.3 S 145° 14'.2 E

38° 18'.3 S 145° 13'.7 E

38° 18'.3 S 145° 14'.2 E.

Mariners are advised to navigate with caution in the area.

Chart temporarily affected - Aus 150 - Aus 151 - Aus 152 - AU5152P1

HYDROGRAPHIC REPORTS

<i>Locality</i>	<i>Report</i>	<i>Ship/Authority</i>	<i>Observer</i>
QLD- Lloyd Bay First Stony Point	Shoals Rock	MV <i>Temple Bay</i> SV <i>Rhapsody</i>	P Bakker R Walsh
NT- Datmana Island	Nomenclature		M Scott

NAVIGATION WARNINGS

The following radio messages have been received during the period to 13 February 2009. Signal copies of these messages may be destroyed. It is recommended that the reprint of Navigational Warnings should be kept in a file or a book divided into areas. Cancellation should be made on receipt of signals and reprints.

Rigs on location other than those listed in the latest Section III summary are the subject of Radio Navigational Warnings. Rigs in transit will not be the subject of Warnings.

AUSCOAST WARNING

028 Drill rig *Atwood Eagle* in position 19° 23'.28 S 114° 18'.10 E. 2.5M clearance requested.
 029 Cancelled.
 030 Cancelled.
 031 Cancelled.
 032 Cancelled.
 033 Drill rig *Ocean Epoch* in position 21° 19'.84 S 114° 05'.25 E. 2.5M clearance requested.
 034 Cancelled.
 035 Cancelled.
 036 Cancelled.
 037 Drill rig *Songa Mercur* in position 21° 31'.73 S 114° 06'.06 E. 2.5M clearance requested.
 038 Cancelled.
 039 Cancelled.

NAVAREA X WARNINGS

Nil.

Navigational warnings in force as at 130001UTC FEB 09.**Auscoast**

2008 340 353 368 370 374 390 401

2009 007 014 016 018 020 026 027 028 033 037

Navarea X

001

Summary of mobile drilling rigs as at 130001UTC FEB 09.

<i>Name</i>	<i>Position</i>
West Atlas	12° 40'.30 S 124° 32'.40 E
Stena Clyde	13° 08'.24 S 123° 08'.24 E
Sedco 703	13° 59'.20 S 121° 58'.33 E
Ocean Bounty	19° 25'.10 S 116° 29'.90 E
Atwood Eagle	19° 23'.28 S 114° 18'.10 E
Songa Venus	19° 30'.26 S 115° 50'.10 E
Ensco 106	20° 33'.30 S 115° 42'.53 E
Ocean Epoch	21° 19'.84 S 114° 05'.25 E
Nan Hai 6	21° 26'.02 S 114° 01'.60 E
Songa Mercur	21° 31'.73 S 114° 06'.06 E.

NAVAREA XIV WARNINGS

004 Cancelled.
 005 South Pacific Ocean. Fiji, Vanua Levu. Lights unlit. The following lights are unreliable:
 Vatu-I-Ra Channel K4716 17° 16'.0 S 178° 33'.0 E
 Vatu-I-Ra Channel, West K4717 17° 16'.6 S. 178° 29'.2 E
 Koro, Muanivanua Point K4740 17° 23'.9 S. 179° 23'.1 E
 Savusavu Bay K4744 16° 49'.9 S. 179° 16'.0 E.

Navarea XIV warnings in force as at 130001UTC FEB 09.

2008 085

2009 002 003 005

To accompany Australian Notice to Mariners 181/2009

54150	SUAI 9° 21' S, 125° 16' E -0900	1.78	0.744	0.382	0.343	0.214		0.003	0.011	
			1.8	55.6	317.1	297.3		325.0	293.2	

To accompany Australian Notice to Mariners 181/2009 (continued)

54150	0.040	0.096	0.127	0.107	0.032	0.003	0.016	0.018	0.002	HYDRO 2000
	283.6	319.0	347.2	53.9	31.9	29.6	114.4	177.4	15.8	

To accompany Australian Notice to Mariners 181/2009

63014	EAST HOLOTHURIA RF 13° 34' S, 126° 1' E -0800	1.99	0.971	0.652	0.408	0.228		0.054	0.034	
			323.3	28.5	330.9	309.8		302.9	0.4	

To accompany Australian Notice to Mariners 181/2009 (continued)

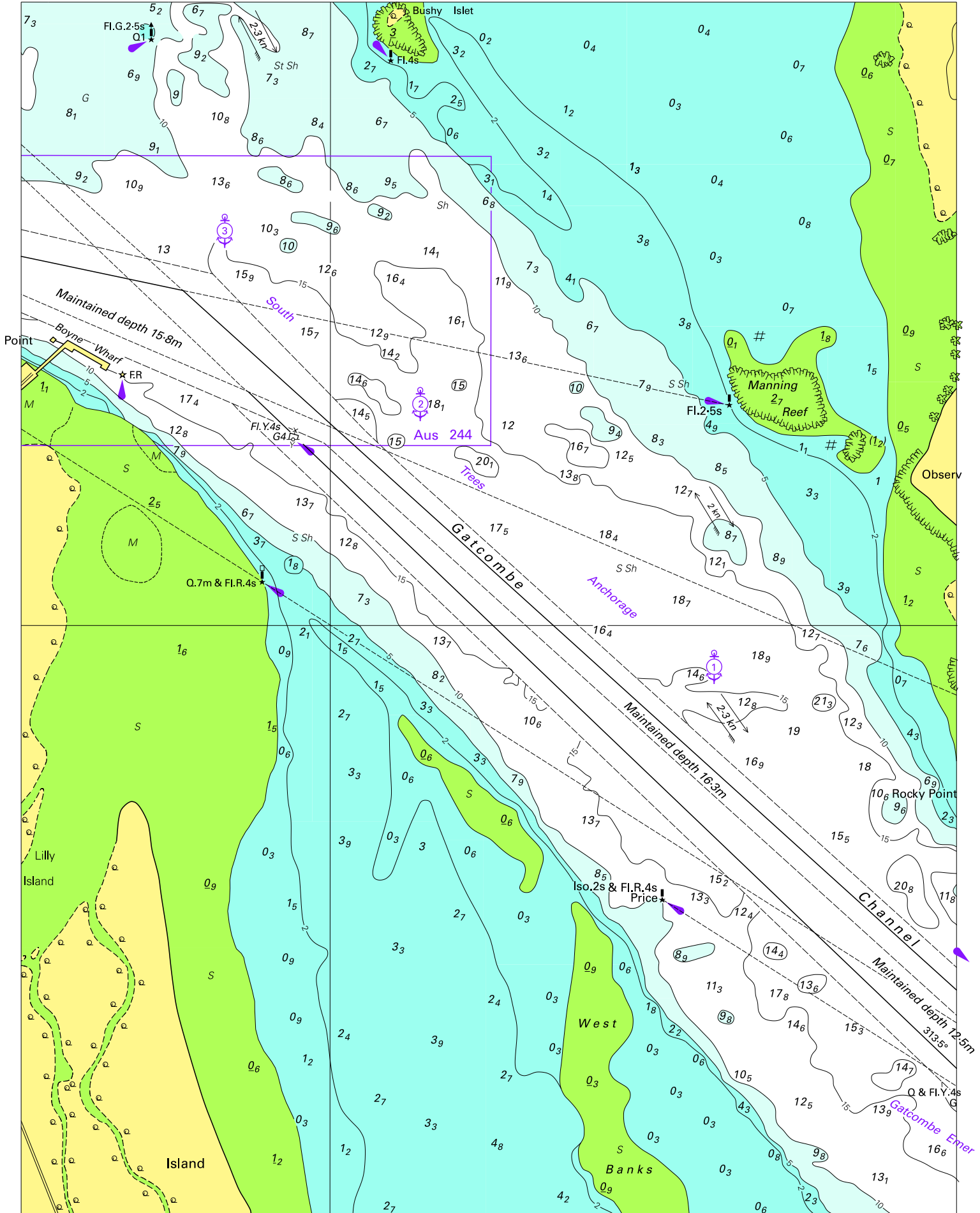
63014	0.047	0.118	0.143	0.188	0.044	0.029	0.018	0.016	0.004	HYDRO 1986
	303.7	331.9	303.5	27.5	354.2	71.0	279.5	351.7	284.0	

To accompany Australian Notice to Mariners 181/2009 (continued)

63370	PORT ESSINGTON 11° 3' S, 132° 2' E -0930	1.63	0.540	0.199	0.256	0.201		0.027	0.018
			109.3	179.2	350.5	335.7		279.9	54.7

63370	0.061	0.071	0.135	0.056	0.018	0.051	0.025	0.042	0.005	HYDRO 2007
	324.9	352.9	80.8	177.9	257.6	14.2	57.1	125.9	158.5	

To accompany Australian Notice to Mariners 184/2009

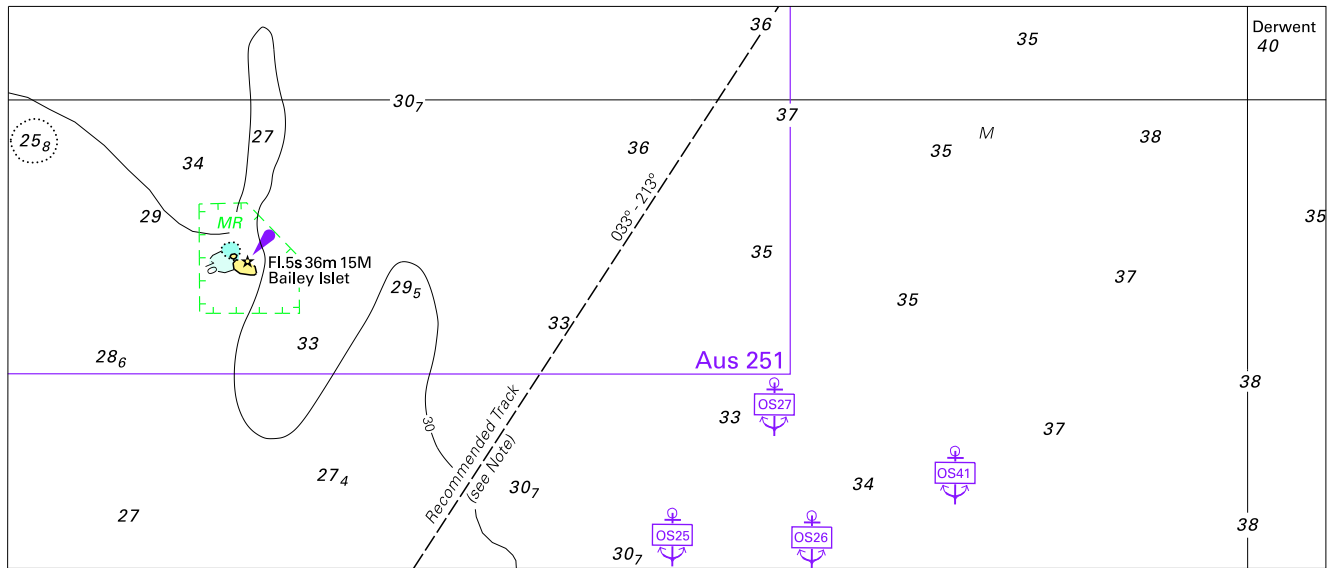


Block for chart Aus245

© Commonwealth of Australia 2009

(193.9 x 251.2mm)

To accompany Australian Notice to Mariners 186/2009

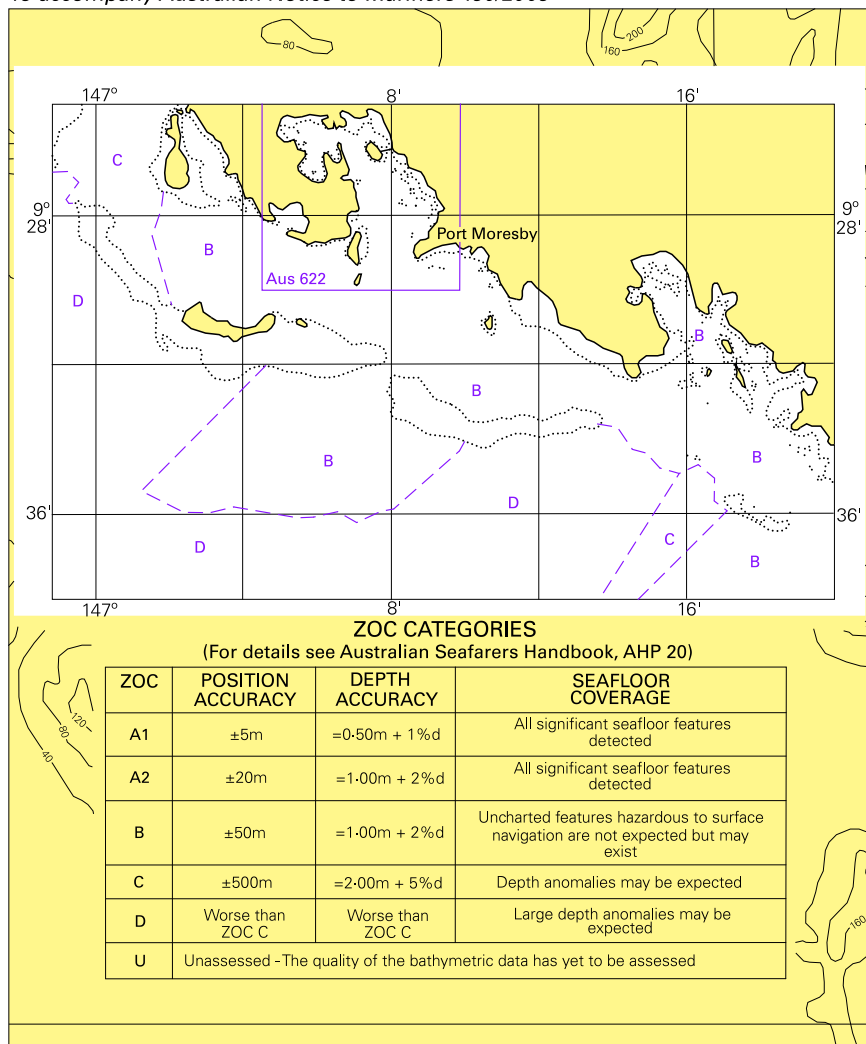


Block for chart Aus 824

© Commonwealth of Australia 2009

(174.3 x 74.3mm)

To accompany Australian Notice to Mariners 190/2009



Block for chart Aus 621

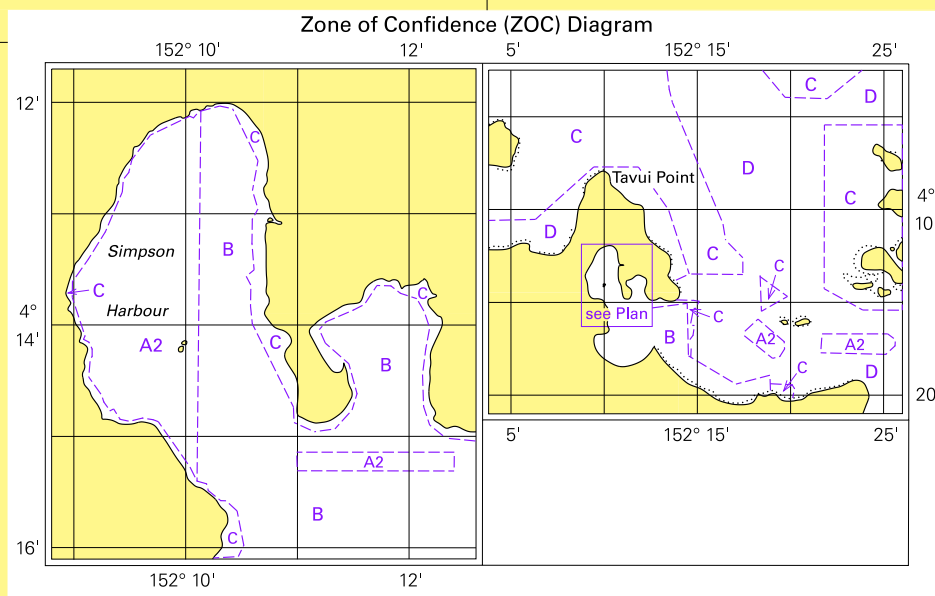
© Commonwealth of Australia 2009

(114.3 x 137.4mm)

SIMPSON AND MATUPIT HARBOURS

1:12 500

Projection: Transverse Mercator

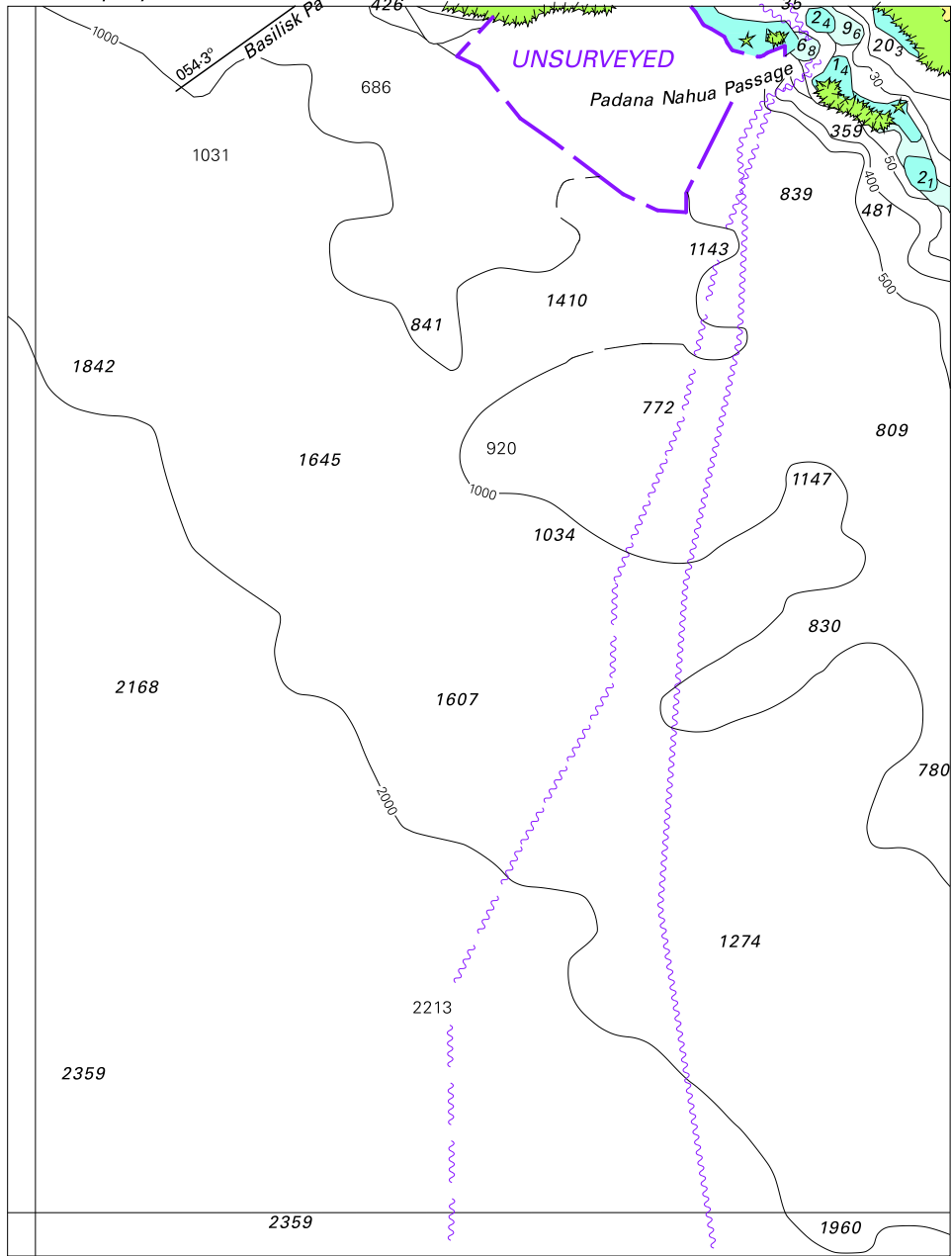


ZOC CATEGORIES

(For details see Australian Seafarers Handbook, AHP 20)

ZOC	POSITION ACCURACY	DEPTH ACCURACY	SEAFLOOR COVERAGE
A1	±5m	=0.50m + 1% d	All significant seafloor features detected.
A2	±20m	=1.00m + 2% d	All significant seafloor features detected.
B	±50m	=1.00m + 2% d	Uncharted features hazardous to surface navigation are not expected but may exist.
C	±500m	=2.00m + 5% d	Depth anomalies may be expected.
D	Worse than ZOC C	Worse than ZOC C	Large depth anomalies may be expected.
U	Unassessed - The quality of the bathymetric data has yet to be assessed.		

To accompany Australian Notice to Mariners 191/2009

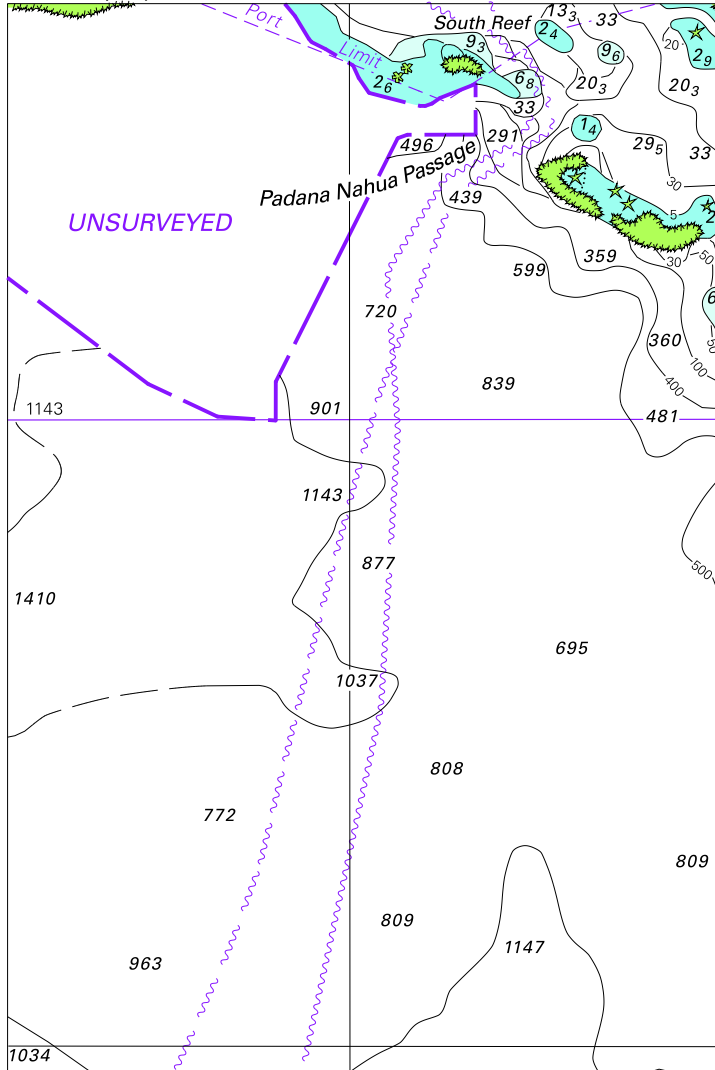


Block for chart Aus 379

© Commonwealth of Australia 2009

(126.1 x 167.1mm)

To accompany Australian Notice to Mariners 191/2009

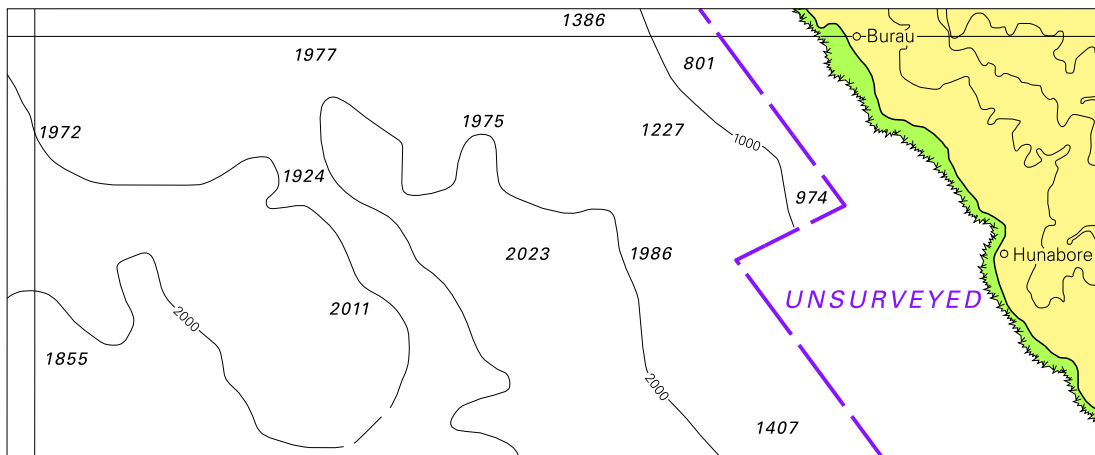


© Commonwealth of Australia 2009

(94-8 x 141.1mm)

Block for chart Aus 505

To accompany Australian Notice to Mariners 193/2009

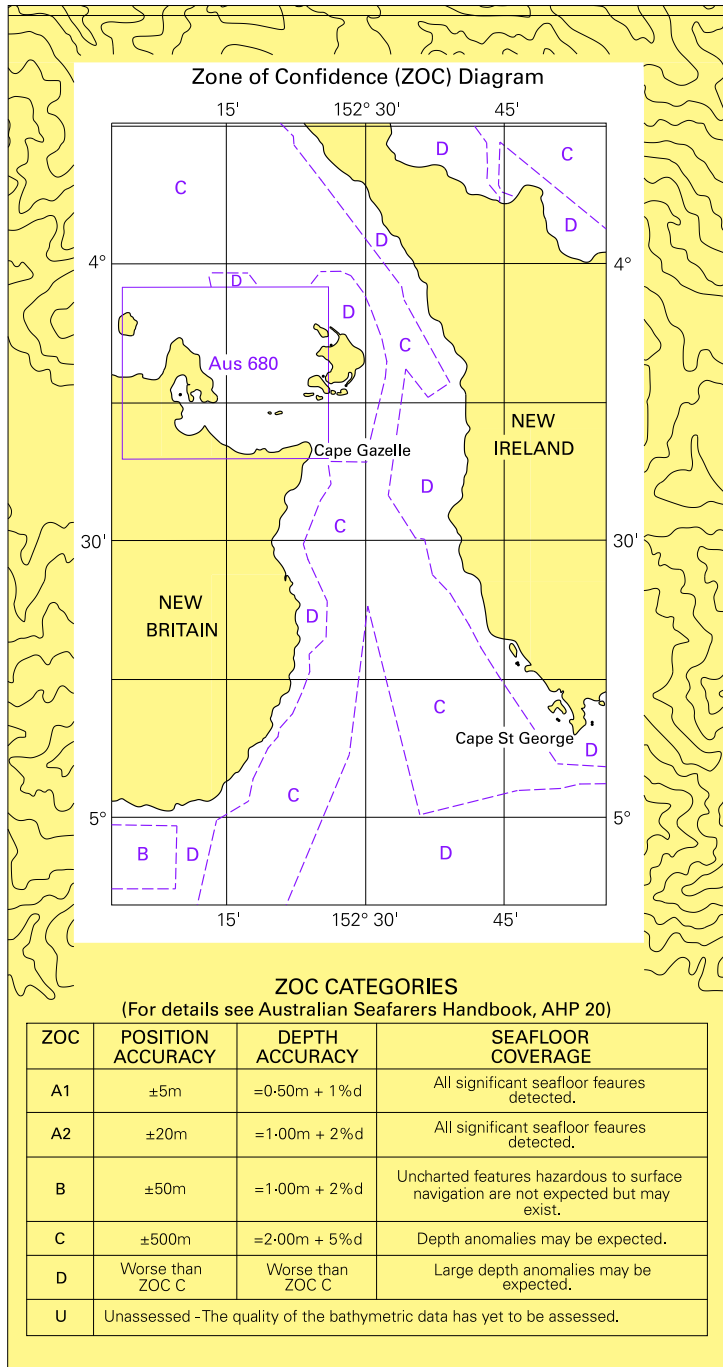


Block for chart Aus 554

© Commonwealth of Australia 2009

(144.6 x 59.4mm)

To accompany Australian Notice to Mariners 193/2009

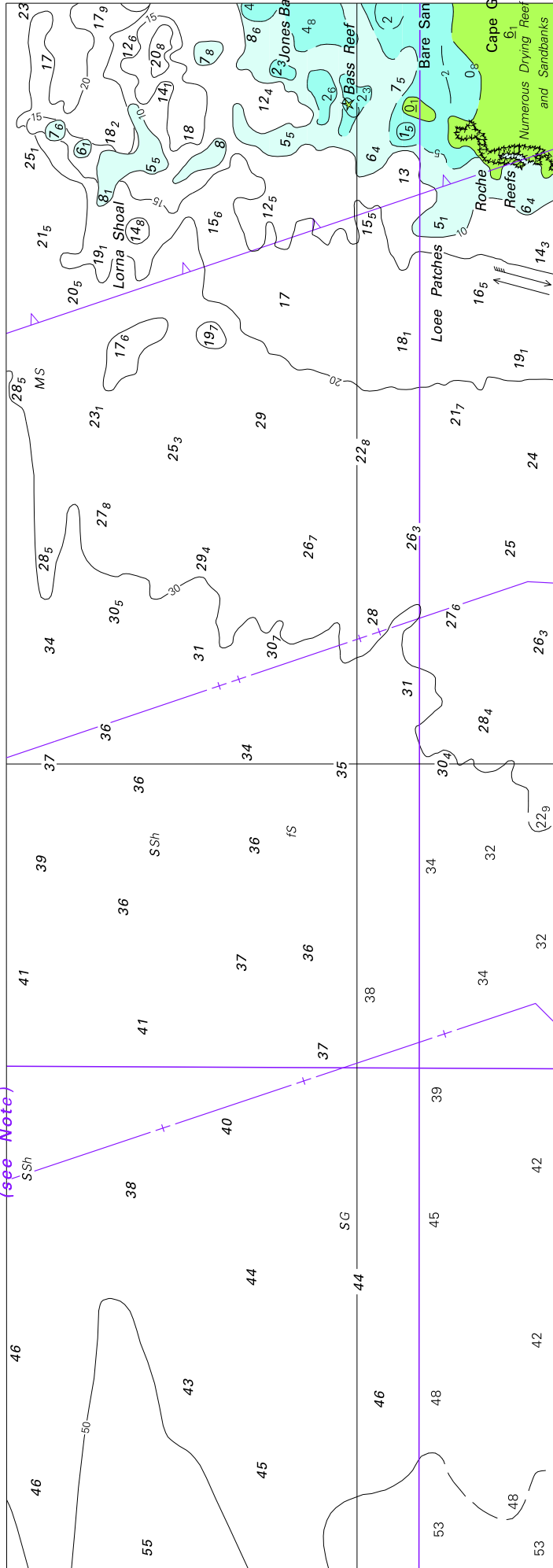


© Commonwealth of Australia 2009

Block for chart Aus 554

(96.2 x 180.9mm)

To accompany Australian Notice to Mariners 196/2009
(see Note)



Block for chart Aus 309

© Commonwealth of Australia 2009

(263.2 x 92.1mm)

