



Australian Notices to Mariners are the authority for correcting Australian Charts and Publications

AUSTRALIAN NOTICES TO MARINERS

Notices 128 - 178 

Published fortnightly by the Australian Hydrographic Service

Commodore R. NAIRN RAN
Hydrographer of Australia

-
- SECTIONS.**
- I. **Australian Notices to Mariners, including blocks and notes.**
 - II. **Hydrographic Reports.**
 - III. **Navigational Warnings.**

For Notices affecting Admiralty List of Lights and Fog Signals; List of Radio Signals; and Sailing Directions see **British Notices to Mariners.**

The substance of these notices should be inserted on the charts affected.

Bearings are referred to the true compass and are reckoned clockwise from North; those relating to lights are given as seen by an observer from seaward. Positions quoted in permanent notices relate to the horizontal datum for the chart(s). When preliminary or temporary notices affect multiple charts, positions will be provided in relation to only one horizontal datum and that datum will be specified. When the multiple charts do not have a common horizontal datum, mariners will be required to adjust the position(s) for those charts not on the specified datum. The range quoted for a light is its nominal range. Depths are with reference to the chart datum of each chart. Heights are above mean high water springs or mean higher high water, as appropriate.

The capital letter (P) or (T) after the number of any notice denotes a preliminary or temporary notice respectively, which are contained separately at the end of the permanent notices. A star () adjacent to the number of a notice indicates that the notice is based on original information.*

Mariners are particularly requested to notify the AUSTRALIAN HYDROGRAPHIC SERVICE, Locked Bag 8801 Wollongong, NSW 2500 (Fax 02-4223 6599, e-mail Hydro.NTM@defence.gov.au or, alternatively by filling in and submitting the [Hydrographic Notes](#) forms located on the web site – www.hydro.gov.au), immediately on the discovery of new dangers or suspected dangers to navigation. For changes or defects in aids to navigation notify AusSAR (Fax 02-6230 6868 or email rccaus@amsa.gov.au).

Copies of Australian notices are available free of charge from the Australian Hydrographic Service (AHS) website (www.hydro.gov.au) and through the eNotices (email) service (www.hydro.gov.au/enotices/enotices.htm).

Individual Notices may be copied for the purpose of inserting Notice substance on official charts and publications. Paper copies may be printed by chart agents and distributed to customers on a cost recovery basis. Participating chart agents are listed on the AHS website as providing a 'Paper Notices to Mariners' service (www.hydro.gov.au/prodserv/distributors/distributors.htm). Copies of the notices may not be sold for profit without prior written agreement.

IMPORTANT NOTICE

This edition of Notices to Mariners includes all significant information affecting AHS products which the AHS has become aware of since the last edition. All reasonable efforts have been made to ensure the accuracy and completeness of the information, including third party information, on which these updates are based. The AHS regards third parties from which it receives information as reliable, however the AHS cannot verify all such information and errors may therefore exist. The AHS does not accept liability for errors in third party information.

© Commonwealth of Australia 2009

This work is copyright. Apart from any use permitted under the Copyright Act 1968, no part may be reproduced by any process, adapted, communicated or commercially exploited without prior written permission from The Commonwealth represented by the Australian Hydrographic Service.

NUMERICAL INDEX OF NOTICES TO MARINERS

Edition No 2

30 January 2009

Notices	Aus Chart, INT Chart, ENC Cell, AHP
128.....	Aus 22, 40, 63, 74, 113, 235, 762, 763, 4620, AU305146, 306153, 306156, 307152, 307153, 308149, 308150, 308151, 308152, 308156, 311125, 311126, 312123, 312124, 313120, 313121, 314125, 315127, 335134, 337133, 337134, 345146, 345147, 405145, 405152, 406145, 406146, 406151, 406152, 407149, 407150, 407151, 407156, 412135, 413134, 415124, 429113, 430114, 444148, 5X32P1, 5134P1, 5136P1, 5139P1, 5139P2, 5XX153, 5XX172, 5174P5, 5514P1
129.....	Amendment to Australian Notice to Mariners No 9
130.....	Amendment to Australian National Tide Tables 2009
131.....	Changes to distress beacons
132.....	Aus 192
133.....	Aus 808, AX 0808E
134.....	Aus 198
135.....	Aus 203
136.....	Aus 209
137.....	Aus 610
138.....	Aus 236
139.....	Aus 244
140.....	Aus 249, 250, 823
141.....	Aus 256
142.....	Aus 830
143.....	Aus 376, 839, 840, AX 66003
144.....	Aus 505, 621
145.....	Aus 621
146.....	Aus 554
147.....	Aus 292, 293, 299
148.....	Aus 293, 299
149.....	Aus 6, 303
150.....	Aus 303
151.....	Aus 309, AX 0309F, 72309
152.....	Aus 310, 4721, AX 0310F, 4721F, INT 721
153.....	Aus 55, 56, 740, 741
154.....	Aus 744
155.....	Aus 117, AX 70117
156.....	Aus 110
157.....	Aus 4070, 4714, AX 4714F, INT 70, 714
158.....	Aus 597, 4070, 4074, INT 70, 74
159.....	Aus 137
160.....	Aus 177
161.....	Aus 176
162.....	Aus 143, 144, 154, 155, 158, 788
163.....	Aus 181
164.....	Aus 805, 806
165(T).....	Aus 244, 245, AU5244X5
166(T).....	Aus 367, 820, AU323151
167(T).....	Aus 247, AU5247P1
168(T).....	Aus 249, 250, AU5250P2
169(T).....	Aus 249, 250, AU5250P1
170(T).....	Aus 829, AU418146
171(T).....	Aus 523, 4622, INT 622
172(T).....	Aus 651
173(T).....	Aus 6
174(T).....	Aus 328, 329, AU422114
175(T).....	Aus 327, 328, 415, 416, 744, AX 0415F, AU320114
176(T).....	Aus 777
177(T).....	Aus 140
178(T).....	Aus 170

ENC Cell	Notices
AU305146	128
AU306153	128
AU306156	128
AU307152	128
AU307153	128
AU308149	128
AU308150	128
AU308151	128
AU308152	128
AU308156	128
AU311125	128
AU311126	128
AU312123	128
AU312124	128
AU313120	128
AU313121	128
AU314125	128
AU315127	128
AU320114	174(T)
AU323151	166(T)
AU335134	128
AU337133	128
AU337134	128
AU345146	128
AU345147	128
AU405145	128
AU405152	128
AU406145	128
AU406146	128
AU406151	128
AU406152	128
AU407149	128
AU407150	128
AU407151	128
AU407156	128
AU412135	128
AU413134	128
AU415124	128
AU418146	170(T)
AU422114	175(T)
AU429113	128
AU430114	128
AU444148	128
AU5X32P1	128
AU5134P1	128
AU5136P1	128
AU5139P1	128
AU5139P2	128
AU5XX153	128
AU5XX172	128
AU5174P5	128
AU5244X5	165(T)
AU5247P1	167(T)
AU5250P1	169(T)
AU5250P2	168(T)
AU5514P1	128

128 AUSTRALIA - Product

Australian Hydrographic Service (AA369537, AA380763, AA381601, AA381602, AA382321, AA382423)

New Chart

<i>Chart</i>	<i>Published</i>	<i>Title and description of amendments</i>	<i>Scale</i>	<i>Folio</i>	<i>Index Chart</i>	<i>Price</i>
Aus 22	21/11/2008	Australia - North Coast - Northern Territory - Apsley Strait (Northern Sheet) 11° 12' 18" S - 11° 30' 00" S 129° 57' 42" E - 130° 28' 24" E Plan: Port Melville 11° 24' 36" S - 11° 25' 54" S 130° 24' 30" E - 130° 25' 24" E <i>New chart providing improved coverage of the northern approaches to Apsley Strait including Port Melville.</i>	1:50 000 1:10 000	2	Aus 5000	\$35.00

New Electronic Navigation Chart (Seafarer ENC)

<i>Cell Name</i>	<i>Released</i>	<i>Title</i>
AU305146	January 2009	Bismark Sea - Hankow Reef to Karkar Island
AU306153	January 2009	Solomon Sea - Cell 16
AU306156	January 2009	South Pacific Ocean - Cell 1
AU307152	January 2009	Solomon Sea - Cell 14
AU307153	January 2009	Solomon Sea - Cell 15
AU308149	January 2009	Solomon Sea - Cell 10
AU308150	January 2009	Solomon Sea - Cell 9
AU308151	January 2009	Solomon Sea - Cell 8
AU308152	January 2009	Solomon Sea - Cell 7
AU308156	January 2009	Solomon Sea - South East Approaches to Shortland Islands
AU311125	January 2009	Timor Sea - Sahul Banks North
AU311126	January 2009	Timor Sea - Sahul Banks North East
AU312123	January 2009	Timor Sea - Fantome Shoal to Hibernia Reef
AU312124	January 2009	Timor Sea - Sahul Banks South West
AU313120	January 2009	Indian Ocean - Cell 31
AU313121	January 2009	Indian Ocean - Cell 2
AU314125	January 2009	Western Australia - Penguin Shoal to Cassini Island
AU315127	January 2009	Western Australia - Buckle Head to Cape Bernier
AU335134	January 2009	South Australia - Greenly Island
AU337133	January 2009	South Australia - Southern Ocean - Cell 5
AU337134	January 2009	South Australia - Southern Ocean - Cell 6
AU345146	January 2009	Tasmania South Coast - Southern Ocean - Cell 2
AU345147	January 2009	Tasmania South Coast - Southern Ocean Cell 3
AU405145	January 2009	Bismark Sea - Karkar Island to Manam Island
AU405152	January 2009	Bismark Sea - St Georges Channel
AU406145	January 2009	Bismark Sea - Approaches to Madang
AU406146	January 2009	Bismark Sea - Eastern Approach to Madang
AU406151	January 2009	Solomon Sea - Cape Beachey to Cape Kwoi
AU406152	January 2009	Solomon Sea - Southern Approach to St Georges Channel
AU407149	January 2009	Solomon Sea - Arawe Harbour to Aivet Island
AU407150	January 2009	Solomon Sea - Kablumgu Cape to Montagu Harbour
AU407151	January 2009	Solomon Sea - Cell 13
AU407156	January 2009	Solomon Sea - Fauro Island to Oema Island
AU412135	January 2009	Arafura Sea - Drysdale Island to Crocodile Islands
AU413134	January 2009	Northern Territory - Milingimbi Inlet and Maningrida
AU415124	January 2009	Western Australia - Maret Island to De Freycinet Island
AU429113	January 2009	Western Australia - Houtman Abrolhos
AU430114	January 2009	Western Australia - Clio Bank to Beagle Islands
AU444148	January 2009	Tasmania East Coast - Tasman Island
AU5X32P1	January 2009	Western Australia - Wyndham Wharf
AU5134P1	January 2009	South Australia - Port Lincoln Wharves
AU5136P1	January 2009	South Australia - Port Pirie Wharves
AU5139P1	January 2009	South Australia - Port Giles
AU5139P2	January 2009	South Australia - Klein Point
AU5XX153	January 2009	Port Phillip - Port of Geelong
AU5XX172	January 2009	Tasmania - Port of Hobart
AU5174P5	January 2009	Tasmania - Recherche Bay
AU5514P1	January 2009	Solomon Sea - Kwaipan Bay Wharves

128 AUSTRALIA – Product (continued)
New Chart to be published shortly

<i>Chart</i>	<i>Title</i>	<i>Scale</i>	<i>Expected Publication Date</i>	<i>Expected Stock Availability</i>
Aus 40	Australia - North West Coast - Western Australia - Yampi Sound	1:37 500	30 January 2009	9 March 2009
Aus 74	Australia - West Coast - Western Australia - Approaches to Useless Loop Plan: Slope Island	1:50 000 1:7 500	30 January 2009	9 March 2009

New Edition to be published shortly

<i>Chart</i>	<i>Title</i>	<i>Scale</i>	<i>Expected Publication Date</i>	<i>Expected Stock Availability</i>
Aus 63	Australia - North West Coast - Western Australia - Mary Anne Passage	1:50 000	30 January 2009	9 March 2009
Aus 113	Australia - West Coast - Western Australia - Port of Fremantle	1:7 500	30 January 2009	9 March 2009
Aus 235	Australia - East Coast - Queensland - Approaches to Moreton Bay Plan: Mooloolaba Harbour	1:75 000 1:10 000	30 January 2009	9 March 2009
Aus 762	Australia - South Coast - Western Australia - Investigator Island to Cape Le Grand	1:150 000	30 January 2009	9 March 2009
Aus 763	Australia - South Coast - Western Australia - Cape Le Grand to Cape Pasley	1:150 000	30 January 2009	9 March 2009
Aus 4620	Australia - Papua New Guinea - Percy Isles to Booby Island including Gulf of Papua	1:1 500 000	30 January 2009	9 March 2009

For further details refer to the AHS website at www.hydro.gov.au for new edition and new chart stock arrival information.

When placing orders with a chart agent, mariners should advise whether their order pertains to the current edition or the new edition.

129 AUSTRALIA - Product - Amendment to Australian Notice to Mariners No 9
 Airlservices Australia (AA381620)

Page 48

Amend Swanbourne firing area (D126) Vertical Limits to SFC-1 500

130 AUSTRALIA - Product - Amendment to Australian National Tide Tables 2009
 Australian Hydrographic Service (AA379617, AA379753)

Page xxxi

Insert Eden To Chart Datum AUS 806 NC 21 NOV 2008 0.0

Page xxxiv

Amend Port Hedland To Chart Datum to AUS 54 NC 7 NOV 2008 0.0

Page 295

Amend STEPHENS I. MSL to 2.0

Page 302

Amend LORNE MSL to 1.4

Page 330

Amend STEPHENS I. Z0 to 2.00

Pages 344-345

Insert accompanying table for Green I.

130 AUSTRALIA - Product - Amendment to Australian National Tide Tables 2009 (continued)

Page 366

Amend LORNE Z0 to 1.37

Page 388

Amend SCOTT REEF To Chart Datum to 0.0**131 AUSTRALIA - Changes to distress beacons**

Australian Maritime Safety Authority (AA381473)

Analogue 121.5 MHz beacons will no longer be detected by satellite from 1 February 2009. The internationally owned satellites will be switched off and the Australian Maritime Safety Authority that coordinates all aviation and maritime search and rescue across Australia's 53 million square kilometre search and rescue region, will no longer have the ability to detect an analogue distress beacon via satellite. Australia has no capacity to delay the switch off date of the satellites, however, AMSA and State/NT agencies have been informing the public of this date since the announcement was made in 2000.

To ensure your life and the lives of your family are safe during recreational activities on land, sea or in the air, it is essential to switch to a 406 MHz distress beacon immediately.

While the 1 February 2009 cessation date has been widely known for some considerable time, the last minute rush by consumers to purchase a 406 MHz beacon has resulted in some shortage of supplies. If you are having difficulty purchasing a distress beacon, you should ensure your name is placed on a waiting list.

Digital technology provides AMSA with a faster notification and more accurate location, enabling a quicker response to your distress situation. These include EPIRB (Emergency Positioning Indicating Radio Beacons) for use on water, PLB (Personal Locator Beacons) for land use, and ELT (Emergency Locator Transmitters) in aircraft.

If you continue to rely upon a 121.5 MHz analogue beacon in a distress situation rescue authorities may never hear you.

406 MHz beacons must be registered with AMSA. Registration is free and can be done on-line at the AMSA web site.

When upgrading to a 406 MHz distress beacon it is essential that old analogue models are appropriately disabled and disposed of responsibly so that they do not trigger false alarms. Battery World shops provide free disposal.

More advice about distress beacons is available from the AMSA web site: www.amsa.gov.au/beacons or by calling 1800 406 406.

Do not risk going without a 406.

132* AUSTRALIA - NEW SOUTH WALES - Twofold Bay - Nav aids

NSW Maritime (AA381420)

Aus 192 [1062/2008]

<i>Amend</i>	light to <i>Oc.R.3s</i>	37° 05'.70 S	149° 55'.66 E
	light to <i>Fl.Y.3s 3M</i>	37° 06'.37 S	149° 55'.19 E
	light to <i>Fl.G.3s 3M</i>	37° 06'.44 S	149° 55'.18 E
	light to <i>Oc.RG.3s 6m 5M</i>	37° 04'.71 S	149° 53'.03 E

<i>Substitute</i>	east cardinal cylindrical light buoy, Q(3)10s, with topmark for light buoy	37° 05'.67 S	149° 53'.95 E
-------------------	--	--------------	---------------

<i>Amend</i>	light, <i>Oc.3s 5M</i>	37° 4'.52 S	149° 54'.38 E
--------------	------------------------	-------------	---------------

Aus 192 (plan, East Boyd Bay Wharves)

<i>Amend</i>	light to <i>Oc.R.3s</i>	37° 05'.70 S	149° 55'.66 E
	light to <i>Fl.Y.3s 5m 3M</i>	37° 06'.37 S	149° 55'.19 E
	light to <i>Fl.G.3s 5m 3M</i>	37° 06'.44 S	149° 55'.18 E

Aus 192 (plan, Eden)

<i>Insert</i>	light, <i>Oc.3s 5M</i>	37° 04'.511 S	149° 54'.374 E
---------------	------------------------	---------------	----------------

<i>Delete</i>	light	37° 04'.52 S	149° 54'.38 E
---------------	-------	--------------	---------------

133* AUSTRALIA - NEW SOUTH WALES - Point Perpendicular - Legend eastwards
UKHO (AA379652)

Aus 808 [31/2009]

Insert	magenta legend, <i>Rock Lobster Fishery (see Note)</i> , centred on	35° 04'.5 S	151° 02'.0 E
--------	--	-------------	--------------

AX 0808E [31/2009]

Insert	magenta legend, <i>Rock Lobster Fishery (see Note)</i> , centred on	35° 04'.5 S	151° 02'.0 E
--------	--	-------------	--------------

134* AUSTRALIA - NEW SOUTH WALES - Port Hacking - Beacon

Australian Hydrographic Service (AA376701)

Aus 198 [1000/2008]

On certain copies only

Substitute	starboard lateral topmark for topmark	34° 03'.93 S	151° 03'.67 E
------------	---------------------------------------	--------------	---------------

135* AUSTRALIA - NEW SOUTH WALES - Port Jackson - Nav aids

Australian Hydrographic Service (AA357582, AA357583), NSW Maritime (AA357580, AA223961, AA235739)

Aus 203 [1265/2008]

On certain copies only

Amend	legend to 309.2°	33° 49'.93 S	151° 09'.34 E
-------	------------------	--------------	---------------

Substitute	special topmark for port lateral topmark	33° 50'.61 S	151° 08'.50 E
------------	--	--------------	---------------

136* AUSTRALIA - NEW SOUTH WALES - Port Stephens - Nav aids

NSW Maritime (AA381394, AA381395)

Aus 209 [37/2009]

Insert	west cardinal light beacon, <i>Q(9)15s</i> , with topmark	32° 41'.745 S	152° 07'.322 E
--------	---	---------------	----------------

Substitute	south cardinal light beacon, <i>Q(6)+LFl. 15s</i> , with topmark for light beacon	32° 42'.28 S	152° 07'.56 E
	south cardinal beacon, with topmark for beacon	32° 41'.31 S	152° 05'.94 E
	south cardinal beacon, with topmark for beacon	32° 41'.42 S	152° 04'.97 E

Delete	light beacon	32° 41'.74 S	152° 07'.37 E
--------	--------------	--------------	---------------

137* AUSTRALIA - TASMAN SEA - Lord Howe Island - Nav aids

NSW Maritime (AA379660, AA379664, AA380337, AA380338, AA380340, AA380343, AA380347, AA380348)

Aus 610 (plan, Lord Howe Island) [33/2007]

Insert	starboard lateral conical light buoy, <i>Fl.G. 1-5s</i> , without topmark	31° 31'.531 S	159° 03'.345 E
	starboard lateral conical buoy, without topmark	31° 31'.515 S	159° 02'.753 E
Amend	light to <i>F.WRG & 2 F.Bu (occas)</i>	31° 31'.34 S	159° 03'.03 E
	legend to <i>Dir 054°</i>	31° 32'.53 S	159° 01'.04 E
Substitute	starboard lateral conical light buoy, <i>Fl.G. 3s</i> , without topmark for buoy	31° 31'.40 S	159° 02'.97 E
Delete	depth, 0 ₉ m	31° 31'.54 S	159° 03'.36 E

Aus 610 (plan, The Lagoon (North))

Insert	light, <i>F.WRG & 2 F.Bu (occas)</i>	31° 31'.335 S	159° 03'.025 E
	dashed line, between	31° 31'.341 S	159° 03'.014 E
	starboard lateral conical buoy, without topmark	31° 31'.335 S	159° 03'.025 E
	starboard lateral conical light buoy, <i>Fl.G. 1-5s</i> , without topmark	31° 31'.515 S	159° 02'.753 E
Amend	legend to <i>Dir 054°</i>	31° 31'.75 S	159° 02'.35 E
	starboard lateral conical light buoy, <i>Fl.G. 3s</i> , without topmark for buoy	31° 31'.40 S	159° 02'.97 E
Delete	light	31° 31'.34 S	159° 03'.02 E
	depth, 0 ₉ m	31° 31'.54 S	159° 03'.36 E
	depth, 10m	31° 31'.53 S	159° 02'.76 E

138* AUSTRALIA - QUEENSLAND - Moreton Bay - Manly - Light buoy

Maritime Safety Queensland Notice 24/2009 (AA380517)

Aus 236 (plan, Manly Boat Harbour) [1266/2008]

Insert	port lateral cylindrical light buoy, <i>Fl.R. 2-5s</i> , without topmark	27° 27'.200 S	153° 11'.416 E
Delete	legend, Moorings	27° 27'.20 S	153° 11'.46 E

139* AUSTRALIA - QUEENSLAND - Gladstone - South Trees Point - Depths

Maritime Safety Queensland (DHDB 600991)

Aus 244 (plan, South Trees Point) [1267/2008]

Insert	accompanying block	23° 51'.0 S	151° 20'.0 E
--------	--------------------	-------------	--------------

140* AUSTRALIA - QUEENSLAND - Hay Point - Infrastructure

Maritime Safety Queensland Notice 839(T)/2008 (AA379230, AA379629, AA379630)

Aus 249 [1221/2008]

Insert	accompanying block	21° 15'.0 S	149° 18'.5 E
--------	--------------------	-------------	--------------

Aus 250 (plan, Hay Point) [42/2009]

Insert	accompanying block	21° 14'.5 S	149° 18'.1 E
--------	--------------------	-------------	--------------

Aus 823 [1221/2008]

Insert	continuous line, between	21° 14'.81 S	149° 18'.16 E
		21° 14'.57 S	149° 18'.04 E

141* AUSTRALIA - QUEENSLAND - Magnetic Island - Nelly Bay - Light beacon

Former Notice - 1082(T)/2007 is cancelled

Maritime Safety Queensland Notice 818(T)/2008 (AA378619)

Aus 256 (plan, Magnetic Harbour) [575/2008]

Move	light beacon	19° 09'.63 S	146° 51'.36 E
	to	19° 09'.629 S	146° 51'.368 E

142* AUSTRALIA - QUEENSLAND - Flora Reef - Historic wreck

Department of Environment, Water, Heritage and the Arts (AA380071, AA380072)

Aus 830 [812/2007]

Insert	historic wreck, with magenta legend <i>Historic Wk</i> (see Note)	17° 12'.06 S	146° 17'.30 E
--------	---	--------------	---------------

Delete	historic wreck	17° 05'.8 S	146° 11'.6 E
--------	----------------	-------------	--------------

143* AUSTRALIA - QUEENSLAND - Yam Island - Light beacons

Maritime Safety Queensland Notice 844/2008 (AA379298)

Aus 376 [50/2009]

Insert	light beacon, <i>Fl.R.</i> 3s, with port lateral topmark	9° 53'.95 S	142° 45'.90 E
--------	--	-------------	---------------

Aus 839 [50/2009]

Insert	light beacon, <i>Fl.R.</i> 3s, with port lateral topmark	9° 53'.95 S	142° 45'.90 E
--------	--	-------------	---------------

Aus 840 [232/2008]

Insert	light beacon, <i>Fl.R.</i> 3s, with port lateral topmark	9° 53'.95 S	142° 45'.90 E
--------	--	-------------	---------------

AX 66003 [50/2009]

Insert	light beacon, <i>Fl.R.</i> 3s, with port lateral topmark	9° 53'.95 S	142° 45'.90 E
--------	--	-------------	---------------

144* PAPUA NEW GUINEA - Port Moresby - Nadeara Reef - Wreck

National Maritime Safety Authority PNG Notice 214/2008 (AA369688, AA372451)

Aus 505 [1273/2008]

Insert	depth, 15m, enclosed by danger circle with legend <i>Wk</i>	9° 32'.84 S	147° 09'.60 E
--------	---	-------------	---------------

Aus 621 [486/2008]

Insert	depth, 15m, enclosed by danger circle with legend <i>Wk</i>	9° 32'.838 S	147° 09'.596 E
--------	---	--------------	----------------

145* PAPUA NEW GUINEA - Padana Nahua Passage - Depths

Fugro Survey Pty Ltd (DHDB 845042)

Aus 621 [144/2009]

Insert	accompanying block	9° 36'.5 S	147° 17'.0 E
--------	--------------------	------------	--------------

146* PAPUA NEW GUINEA - New Ireland - Chart limits
Australian Hydrographic Service (AA379052, AA379053)

Aus 554 [843/2008]

Insert	magenta line, between	4° 39'.10 S	152° 52'.92 E
		4° 46'.22 S	152° 52'.92 E
		4° 46'.22 S	152° 55'.92 E
		4° 52'.72 S	152° 55'.92 E
Delete	magenta line, between	4° 39'.1 S	152° 52'.9 E
		4° 39'.1 S	152° 56'.0 E
	magenta line, between	4° 52'.7 S	152° 55'.9 E
		4° 52'.7 S	152° 56'.0 E

147* AUSTRALIA - QUEENSLAND - Hammond Island - Bruce Point - Light beacons
Maritime Safety Queensland Notice 844/2008 (AA379298)

Aus 292 [51/2009]

Insert	light beacon, <i>Fl.G.</i> 3s, with starboard lateral topmark	10° 33'.59 S	142° 13'.27 E
Delete	depth, 21m	10° 33'.5 S	142° 13'.3 E

Aus 293 [51/2009]

Insert	light beacon, <i>Fl.G.</i> 3s, with starboard lateral topmark	10° 33'.675 S	142° 13'.209 E
--------	---	---------------	----------------

Aus 299 [1007/2008]

Insert	light beacon, <i>Fl.R.</i> 3s, with port lateral topmark	10° 33'.710 S	142° 13'.188 E
	light beacon, <i>Fl.G.</i> 3s, with starboard lateral topmark	10° 33'.675 S	142° 13'.199 E

148* AUSTRALIA - QUEENSLAND - Goods Island - Wrecks
Department of Defence (AA380286, AA380281, AA380282, AA380287)

Aus 293 [147/2009]

Insert	stranded wreck	10° 33'.839 S	142° 10'.060 E
	stranded wreck	10° 34'.283 S	142° 09'.602 E
	stranded wreck	10° 33'.885 S	142° 09'.984 E
Delete	depth, 7m	10° 33'.91 S	142° 09'.98 E

Aus 299 [147/2009]

Insert	stranded wreck	10° 33'.885 S	142° 09'.974 E
Move	stranded wreck	10° 34'.29 S	142° 09'.61 E
	to	10° 34'.283 S	142° 09'.592 E
	stranded wreck	10° 33'.84 S	142° 10'.05 E
	to	10° 33'.839 S	142° 10'.050 E

149* AUSTRALIA - QUEENSLAND - Karumba - Light discontinued
Maritime Safety Queensland Notice 13/2009 (AA380058)

Aus 6 [635/2008]

Delete	light	17° 27'.94 S	140° 49'.72 E
--------	-------	--------------	---------------

Aus 6 (plan, Karumba)

Delete	light	17° 27'.94 S	140° 49'.72 E
--------	-------	--------------	---------------

Aus 303 [635/2008]

Delete	light	17° 27'.9 S	140° 49'.7 E
--------	-------	-------------	--------------

150* AUSTRALIA - QUEENSLAND - Nassau River to Wellesley Islands - ZOC diagram
 Australian Hydrographic Service (AA379689, AA381417)

Aus 303 [149/2009]

Substitute accompanying ZOC diagram 16° 30'.0 S 141° 45'.0 E

151* AUSTRALIA - NORTHERN TERRITORY - Bathurst Island - Apsley Strait - Chart limits
 Australian Hydrographic Service (AA369537)

Aus 309 [53/2009]

Insert magenta limits, with legend *Aus 22* in NW corner,
 between

11° 30'.0 S	129° 57'.7 E
11° 30'.0 S	130° 28'.4 E
11° 12'.3 S	130° 28'.4 E
11° 12'.3 S	129° 57'.7 E
11° 30'.0 S	129° 57'.7 E

AX 0309F [53/2009]

Insert magenta limits, with legend *Aus 22* in NW corner,
 between

11° 30'.0 S	129° 57'.7 E
11° 30'.0 S	130° 28'.4 E
11° 12'.3 S	130° 28'.4 E
11° 12'.3 S	129° 57'.7 E
11° 30'.0 S	129° 57'.7 E

AX 72309 [53/2009]

Insert magenta limits, with legend *Aus 22* in NW corner,
 between

11° 30'.0 S	129° 57'.7 E
11° 30'.0 S	130° 28'.4 E
11° 12'.3 S	130° 28'.4 E
11° 12'.3 S	129° 57'.7 E
11° 30'.0 S	129° 57'.7 E

152* INDONESIA - Pulau Masela - Light
 UKHO (AA277571, AA379748)

Aus 310 [NE 25/4/2008]

Move light 8° 12'.8 S 129° 49'.5 E
 to 8° 13'.48 S 129° 49'.53 E

Delete stranded wreck 8° 13'.6 S 129° 49'.8 E

AX 0310F [NC 26/9/2008]

Move light 8° 12'.8 S 129° 49'.5 E
 to 8° 13'.48 S 129° 49'.53 E

AX 4721F [1280/2008]

Insert light, *FI(2) 20M* 8° 13'.5 S 129° 49'.5 E

Delete light 8° 12'.5 S 129° 49'.5 E

Aus 4721 (INT 721) [1280/2008]

Insert light, *FI(2) 20M* 8° 13'.5 S 129° 49'.5 E

Delete light 8° 12'.5 S 129° 49'.5 E

153* AUSTRALIA - WESTERN AUSTRALIA - Port Walcott - Nav aids
 Port Walcott Pilots (AA378883, AA378884, AA398887)

Aus 55 [1232/2008]

Substitute	port lateral light beacon, <i>Fl(3)R.6s No14</i> , without topmark for light buoy	20° 28'.88 S	117° 16'.93 E
	port lateral light beacon, <i>Fl.R.2s No18</i> , without topmark for light buoy	20° 29'.90 S	117° 16'.00 E
	starboard lateral light beacon, <i>Fl.G.2s No19</i> , without topmark light buoy	20° 30'.66 S	117° 15'.18 E
	port lateral light beacon, <i>Fl.R.2s No20</i> , without topmark for light buoy	20° 30'.75 S	117° 15'.30 E
	starboard lateral light beacon, <i>Fl.G.2s No21</i> , without topmark for light buoy	20° 31'.57 S	117° 14'.48 E
	port lateral light beacon, <i>Fl.R.2s No22</i> , without topmark for light buoy	20° 31'.65 S	117° 14'.60 E
	starboard lateral light beacon, <i>Fl.G.2s No23</i> , without topmark for light buoy	20° 32'.45 S	117° 13'.80 E
	port lateral light beacon, <i>Fl.R.2s No24</i> , without topmark for light buoy	20° 32'.53 S	117° 13'.92 E
	starboard lateral light beacon, <i>Fl.G.2s No27</i> , without topmark for light buoy	20° 33'.81 S	117° 12'.70 E
	port lateral light beacon, <i>Fl.R.2s No28</i> , without topmark for light buoy	20° 33'.90 S	117° 12'.81 E
	starboard lateral pillar light buoy, <i>Fl(3)G.6s No15</i> , without topmark for light buoy	20° 28'.70 S	117° 16'.80 E
	port lateral pillar light buoy, <i>Q.R No16</i> , without topmark for light buoy	20° 29'.10 S	117° 16'.60 E
	starboard lateral light beacon, <i>Fl.G.2s No17</i> , without topmark for light buoy	20° 29'.77 S	117° 15'.84 E
	starboard lateral light beacon, <i>Q.G No25</i> , without topmark for light buoy	20° 33'.33 S	117° 13'.13 E
	port lateral light beacon, <i>Q.R No26</i> , without topmark for light buoy	20° 33'.42 S	117° 13'.24 E

Aus 56 [1232/2008]

Substitute	starboard lateral light beacon, <i>Q.G No25</i> , without topmark for light buoy	20° 33'.33 S	117° 13'.13 E
	port lateral light beacon, <i>Fl.R.2s No28</i> , without topmark for light buoy	20° 33'.90 S	117° 12'.81 E
	starboard lateral light beacon, <i>Fl.G.2s No27</i> , without topmark for light buoy	20° 33'.81 S	117° 12'.70 E
	port lateral light beacon, <i>Q.R No26</i> , without topmark for light buoy	20° 33'.42 S	117° 13'.24 E

Aus 740 [1232/2008]

Substitute	starboard lateral pillar light buoy, <i>Fl(3)G.6s No15</i> , without topmark for light buoy	20° 28'.8 S	117° 16'.7 E
	port lateral pillar light buoy, <i>Q.R No16</i> , without topmark for light buoy	20° 29'.2 S	117° 16'.5 E
	starboard lateral light beacon, <i>Fl.G.2s No27</i> , without topmark for light buoy	20° 33'.9 S	117° 12'.6 E
	port lateral light beacon, <i>Fl.R.2s No28</i> , without topmark for light buoy	20° 34'.0 S	117° 12'.8 E

Aus 741 [1282/2008]

Substitute	starboard lateral pillar light buoy, <i>Fl(3)G.6s No15</i> , without topmark for light buoy	20° 28'.8 S	117° 16'.7 E
	port lateral pillar light buoy, <i>Q.R No16</i> without topmark for light buoy	20° 29'.2 S	117° 16'.5 E
	starboard lateral light beacon, <i>Fl.G.2s No27</i> , without topmark for light buoy	20° 33'.9 S	117° 12'.6 E
	port lateral light beacon, <i>Fl.R.2s No28</i> , without topmark for light buoy	20° 34'.0 S	117° 12'.8 E

154* AUSTRALIA - WESTERN AUSTRALIA - Serrurier Island - Depths
Tenix LADS Corporation Pty Ltd (DHDB 1046869)

Aus 744 [61/2009]

Insert	accompanying block	21° 35'.0 S	114° 50'.0 E
--------	--------------------	-------------	--------------

155* AUSTRALIA - WESTERN AUSTRALIA - Fremantle - Parmelia Bank - Scientific instrument
Fremantle Ports Notice 3/2008 (AA317298)

Aus 117 [1185/2008]

On certain copies only

Substitute	special spherical light buoy for light buoy	32° 06'.47 S	115° 41'.50 E
------------	---	--------------	---------------

AX 70117 [1185/2008]

Substitute	special spherical light buoy for light buoy	32° 6'.47 S	115° 41'.50 E
------------	---	-------------	---------------

156* AUSTRALIA - WESTERN AUSTRALIA - King George Sound - ZOC diagram
Australian Hydrographic Service (AA318722)

Aus 110 [1026/2008]

Insert	accompanying ZOC diagram	35° 00'.0 S	118° 01'.5 E
--------	--------------------------	-------------	--------------

157 INDIAN OCEAN - Broken Ridge to Ile Saint Paul - Depths
BA Notice 2/168/2009 (AA379773)

AX 4714F [NC 26/9/2008]

Insert	accompanying block	33° 00'.0 S	85° 00'.0 E
	depth, 481m, enclosed by contour	38° 35'.2 S	78° 31'.0 E

Delete	depth, 936m and enclosing contour	38° 31'.0 S	78° 32'.0 E
--------	-----------------------------------	-------------	-------------

Aus 4070 (INT 70) [1126/2008]

Insert	accompanying block	30° 00'.0 S	90° 00'.0 E
	depth, 481m, enclosed by contour	38° 35'.2 S	78° 31'.0 E

Delete	depth, 936m and enclosing contour	38° 31'.0 S	78° 32'.0 E
--------	-----------------------------------	-------------	-------------

Aus 4714 (INT 714) [917/2008]

Insert	accompanying block	33° 00'.0 S	85° 00'.0 E
	depth, 481m, enclosed by contour	38° 35'.2 S	78° 31'.0 E

Delete	depth, 936m and enclosing contour	38° 31'.0 S	78° 32'.0 E
--------	-----------------------------------	-------------	-------------

158 INDIAN OCEAN - Southwest Indian Ridge to Iles Kerguelen - Depths

BA Notice 2/169/2009 (AA379773)

Aus 597 [30/2007]

Insert	depth, 187m, enclosed by contour	50° 03'.7 S	65° 59'.8 E
--------	----------------------------------	-------------	-------------

Aus 4070 (INT 70) [157/2009]

Insert	depth, 375m, enclosed by contour	35° 10'.6 S	54° 17'.6 E
	depth, 498m, and extend contour NE to enclose	46° 18'.3 S	38° 39'.6 E
	depth, 670m, enclosed by contour	46° 56'.4 S	53° 49'.2 E
	depth, 187m, enclosed by contour	50° 03'.7 S	65° 59'.8 E

Delete	depth, 272m	50° 05'.0 S	65° 40'.0 E
	depth, 556m	46° 27'.0 S	38° 23'.0 E

Aus 4074 (INT 74) [492/2008]

Insert	depth, 187m, enclosed by contour	50° 03'.7 S	65° 59'.8 E
--------	----------------------------------	-------------	-------------

Delete	depth, 272m	50° 05'.0 S	65° 40'.0 E
--------	-------------	-------------	-------------

159* AUSTRALIA - SOUTH AUSTRALIA - Port Adelaide - Lights*Former Notice - 111(P)/2009 is cancelled*

Department for Transport, Energy and Infrastructure SA Notice 62/2008 (AA379519), HydroSurvey Australia (AA380477, AA380478)

Aus 137 [1288/2008]

Insert	accompanying block	34° 50'.0 S	138° 30'.5 E
--------	--------------------	-------------	--------------

160* AUSTRALIA - TASMANIA - Macquarie Harbour - Beacon

B Jones (AA379297)

Aus 177 [300/2008]

Insert	beacon, without topmark	42° 25'.47 S	145° 27'.88 E
--------	-------------------------	--------------	---------------

161* AUSTRALIA - TASMANIA - Whalers Point - Light sector

Marine and Safety Tasmania (AA334950)

Aus 176 [921/2008]*On certain copies only*

Amend	light sector to white 260° - 062° (162°)	43° 18'.09 S	145° 55'.48 E
-------	--	--------------	---------------

162* AUSTRALIA - VICTORIA - Port Phillip - Radio reporting point

Victorian Notice 147/2008 (AA378559, AA381752)

Aus 143 [969/2008]

Insert radio reporting point (N bound) 38° 05'.00 S 144° 55'.25 E

Substitute two-way radio reporting point for radio reporting point 38° 20'.3 S 144° 35'.1 E

Aus 144 [70/2009]

Substitute two-way radio reporting point for radio reporting point 38° 20'.3 S 144° 35'.1 E

Aus 154 [1032/2008]

Insert two-way radio reporting point 37° 52'.07 S 144° 55'.71 E

Aus 155 [1139/2008]

Insert two-way radio reporting point 37° 52'.07 S 144° 55'.71 E

Aus 158 [70/2009]

Insert two-way radio reporting point 38° 20'.51 S 144° 36'.95 E

Aus 788 [1244/2008]

Substitute two-way radio reporting point for radio reporting point 38° 20'.3 S 144° 35'.1 E

163* AUSTRALIA - VICTORIA - Port Albert - Depths; nav aids

Gippsland Ports (AA283808, AA283814)

Aus 181 [75/2009]

Insert accompanying block 38° 41'.5 S 146° 42'.5 E

164* AUSTRALIA - VICTORIA - Gabo Island - Depths

Australian Hydrographic Service (AA381317)

Aus 805 [967/2007]

Insert accompanying block 37° 32'.0 S 149° 55'.0 E

Substitute accompanying ZOC diagram 37° 33'.0 S 149° 20'.0 E

Aus 806 [NC 21/11/2008]

Insert accompanying block 37° 32'.0 S 149° 55'.0 E

Substitute accompanying ZOC diagram 36° 33'.0 S 149° 55'.0 E

165(T)/2009 AUSTRALIA - QUEENSLAND - Gladstone - Drilling operations

Former Notice - 1247(T)/2008 is cancelled

Date - Until 3 April 2009

Maritime Safety Queensland Notice 733(T)/2008, 45(T)/2009 (AA369681, AA382095)

The barge *Jembri-dev* and tugs *Akuna* and *Black Panther* are conducting drilling operations between Boyne Wharf (23° 51'.24 S 151° 19'.28 E) and Laird Point (23° 44'.65 S 151° 10'.33 E).

The barge and tug display appropriate lights; and can be contacted on VHF Ch 13 and Ch16.

Mariners are advised to navigate with caution in the area.

Chart temporarily affected – Aus 244 – Aus 245 - AU5244X5**166(T)/2009 AUSTRALIA - QUEENSLAND - Karamea Bank - Wreck**

Maritime Safety Queensland Notice 30(T)/2009 (AA381837)

A wreck exists in position 22° 39'.17 S 151° 32'.70 E.

Mariners are advised to navigate with caution in the area.

Chart temporarily affected – Aus 367 – Aus 820 - AU323151**167(T)/2009 AUSTRALIA - QUEENSLAND - Port Alma - Depth information**

Former Notice - 235(T)/2007 is cancelled

Maritime Safety Queensland Notice 137(T)/2007 (AA232314)

Available depths as at 27 February 2007:

<i>Berth</i>	<i>Metres</i>
Balaclava Leads	7.6
Kazatch Leads	7.0
Eupatoria Leads	7.9
Shell Point Leads	7.0
Swing Basin	5.8
Berth No 1	9.2
Berth No 2	9.2
Berth No 3	9.2

* Indicates new or revised entry.

Chart temporarily affected – Aus 247 - AU5247P1**168(T)/2009 AUSTRALIA - QUEENSLAND - Hay Point - Depth information**

Former Notice - 1027(T)/2007 is cancelled

Maritime Safety Queensland Notice 839(T)/2008 (AA379230)

Available depths as at 23 December 2008:

	<i>Metres</i>
HPS Berth No 1	16.4
HPS Berth No 2	16.5
DBCT Berth No 1	18.0
DBCT Berth No 2	18.1
DBCT Berth No 3	18.7
* DBCT Berth No 4	18.6

* Indicates new entry.

Chart temporarily affected – Aus 249 – Aus 250 - AU5250P2

169(T)/2009 AUSTRALIA - QUEENSLAND - Slade Island - Light buoy off station
 Maritime Safety Queensland Notice 42(T)/2009 (AA382133)

The east cardinal light buoy, VQ(3)5s, (21° 06'.10 S 149° 15'.45 E) is off station.

Chart temporarily affected – Aus 249 – Aus 250 - AU5250P1

170(T)/2009 AUSTRALIA - QUEENSLAND - Rocky Point - Light beacon withdrawn
 Maritime Safety Queensland Notice 43(T)/2009 (AA382154)

The north cardinal light beacon, Q, (17° 21'.60 S 146° 01'.90 E) has been temporarily withdrawn.

Chart temporarily affected – Aus 829 - AU418146

171(T)/2009 PAPUA NEW GUINEA - Mount Lunaman - Light discontinued
Former Notice - 964(T)/2005 is cancelled
 National Maritime Safety Authority PNG (AA374396)

Cancel this notice on receipt.

Chart formerly affected – Aus 523 – Aus 4622 (INT 622)

172(T)/2009 PAPUA NEW GUINEA - Wewak - Light relit
Former Notice - 1250(T)/2008 is cancelled
 National Maritime Safety Authority PNG Notice 6/2008 (AA382292)

Cancel this notice on receipt.

Chart formerly affected – Aus 651

173(T)/2009 AUSTRALIA - QUEENSLAND - Karumba - Depth information
Former Notice - 881(T)/2008 is cancelled
 Maritime Safety Queensland Notice 505(T)/2008, 47(T)/2009 (AA354877, AA382291)

Available depths as at 16 January 2009:

<i>Berth</i>	<i>Metres</i>
* Entrance Channel	3.3
Mobil/Trinity Wharf	6.3
Raptis Wharf	5.3
Ruby Marine Wharf	5.3
Gulf Freight Services Wharf	6.2
Karumba Cold Stores Wharf	6.2
Seaswift/Shell Wharf	6.2
Karumba Livestock Loading Wharf	5.4
Gulf Freight Services Ramp/Wharf	4.6
Pasminco Export Wharf	4.2

* Indicates revised entry.

Chart temporarily affected – Aus 6

174(T)/2009 AUSTRALIA - WESTERN AUSTRALIA - Barrow Island - Seismic survey northwards
Date - Until 30 October 2009
 Searcher Seismic Pty Ltd (AA382324, AA382326)

MV *Geowave Voyager*, will be conducting a survey in the area bounded by 18° 50'.0 S to 19° 55'.0 S and 114° 30'.0 E to 115° 50'.0 E.

Chart temporarily affected – Aus 327 – Aus 328 – Aus 415 – Aus 416 – AX 0415F - AU320114

175(T)/2009 AUSTRALIA - WESTERN AUSTRALIA - Muiron Islands - Oil field development northwestwards*Former Notice - 107(T)/2009 is cancelled*

BHP Billiton (AA380398, AA380483, AA380434, AA380655)

Drill rigs *Songa Mercur* and *Diamond Ocean Epoch* are undertaking drilling operations for the Pyrenees oil field; an FPSO will be established in position 21° 32'.47 S 114° 06'.98 E (WGS84 datum).

Subsea production wells will be established as follows:

Ravensworth North	21° 31'.80 S 114° 05'.13 E
Ravensworth South	21° 32'.31 S 114° 05'.09 E
Crosby North	21° 31'.72 S 114° 06'.08 E
Crosby South	21° 32'.69 S 114° 05'.69 E
Stickle	21° 31'.36 S 114° 06'.59 E
Macedon	21° 34'.03 S 114° 10'.30 E
Ravensworth WI	21° 30'.16 S 114° 05'.72 E
Crosby WI	21° 29'.96 S 114° 07'.61 E
Stickle WI	21° 30'.15 S 114° 08'.69 E

Mariners are advised to navigate with caution in the vicinity.

Chart temporarily affected – Aus 328 – Aus 329 – Aus 744 - AU422114

176(T)/2009 AUSTRALIA - SOUTH AUSTRALIA - Wallaroo - Depth information*Former Notice - 1172(T)/2006 is cancelled*

Department for Transport, Energy and Infrastructure SA Notice 38/2006 (AA213542)

Available depths as at 12 September 2006:

Metres (LAT)

* No 1 South Berth 8.7

* No 2 North Berth 8.7

* Indicates new or revised entry.

Chart temporarily affected – Aus 777

177(T)/2009 AUSTRALIA - VICTORIA - Portland - Dredging operations*Date - Until 20 February 2009*

Victorian Notice 9(T)/2009 (AA381831)

Dredging operations are in progress on the eastern side of the entrance to Portland harbour (38° 20'.70 S 141° 37'.28 E).

An exclusion zone, marked by buoys, with an arc of circle radius 160m exits, centred on the main breakwater light (38° 20'.67 S 141° 37'.46 E).

Mariners are advised to navigate with caution in the area.

Chart temporarily affected – Aus 140

178(T)/2009 AUSTRALIA - TASMANIA - Maria Island - Darlington Bay - Harbour works*Date - Until 31 March 2009*

Marine and Safety Tasmania M17/2009 (AA382266)

Harbour works are in progress in the vicinity of Darlington jetty (42° 34'.67 S 148° 03'.78 E). The area is marked by special buoys.

Chart temporarily affected – Aus 170

II

HYDROGRAPHIC REPORTS

Nil Reports

NAVIGATION WARNINGS

The following radio messages have been received during the period to 30 January 2009. Signal copies of these messages may be destroyed. It is recommended that the reprint of Navigational Warnings should be kept in a file or a book divided into areas. Cancellation should be made on receipt of signals and reprints.

Rigs on location other than those listed in the latest Section III summary are the subject of Radio Navigational Warnings. Rigs in transit will not be the subject of Warnings.

AUSCOAST WARNING

- 015 Cancelled.
 016 Drill rig *Songa Venus* in position 19° 30'·26 S 115° 50'·10 E. 2.5M clearance requested.
 017 Cancelled.
 018 Drill rig *Enesco 106* in position 20° 33'·30 S 115° 42'·53 E. 2.5M clearance requested.
 019 Cancelled.
 020 Drill rig *Ocean Bounty* in position 19° 25'·10 S 116° 29'·90 E. 2.5M clearance requested.
 021 Cancelled.
 022 Cancelled.
 023 Drill rig *Songa Mercur* in position 21° 31'·36 S 114° 06'·55 E. 2.5M clearance requested.
 024 Cancelled.
 025 Cancelled.
 026 Special purpose vessel *Highland Navigator* conducting seismic survey in area 19° 54'·50 S to 20° 00'·00 S and 115° 07'·50 E to 115° 22'·50 E. 2.5M clearance requested.
 027 Mariners are reminded that from 010015UTC Feb 2009 the 121.5 and 243 MHZ distress frequencies will no longer be monitored by satellite. All mariners are required to carry a registered 406 MHZ distress beacon when proceeding more than 2M offshore. Relying on a 121.5/243 MHZ beacon after this date may mean we never hear you. Dispose of your 121.5 MHZ beacons through battery world stores and for more information see www.amsa.gov.au or freecall 1800 406 406.

NAVAREA X WARNINGS

- 003 Cancelled.
 004 Cancelled.

Navigational warnings in force as at 300001UTC JAN 09.**Auscoast**

2008 340 353 368 370 374 390 401

2009 007 014 016 018 020 023 026 027

Navarea X

001

Summary of mobile drilling rigs as at 300001UTC JAN 09.

<i>Name</i>	<i>Position</i>
West Atlas	12° 40'·30 S 124° 32'·40 E
Stena Clyde	13° 08'·24 S 123° 08'·24 E
Sedco 703	13° 59'·20 S 121° 58'·33 E
Ocean Bounty	19° 25'·10 S 116° 29'·90 E
Songa Venus	19° 30'·26 S 115° 50'·10 E
Atwood Eagle	19° 54'·48 S 115° 07'·55 E
Enesco 106	20° 33'·30 S 115° 42'·53 E
Nan Hai 6	21° 26'·02 S 114° 01'·60 E

NAVAREA XIV WARNINGS

- 001 Cancelled.
 002 Radio Services. Mariners are advised that NAVAREA XIV R/T broadcasts from Taupo Maritime Radio (ZLM) will be made at the following times: 0303, 0333, 0903, 1003, 1503, 1533, 2103, 2203 UTC.
 003 South Pacific Ocean. Western Samoa, Mulifanu Harbour shoals. A 3.1 metre shoal exists in position 13° 49'·07 S 172° 02'·94 W and a 2.1 metres shoal exists in position 13° 49'·12 S 172° 02'·95 W.

Navarea XIV warnings in force as at 300001UTC JAN 09.

2008 085 090

2009 002 003

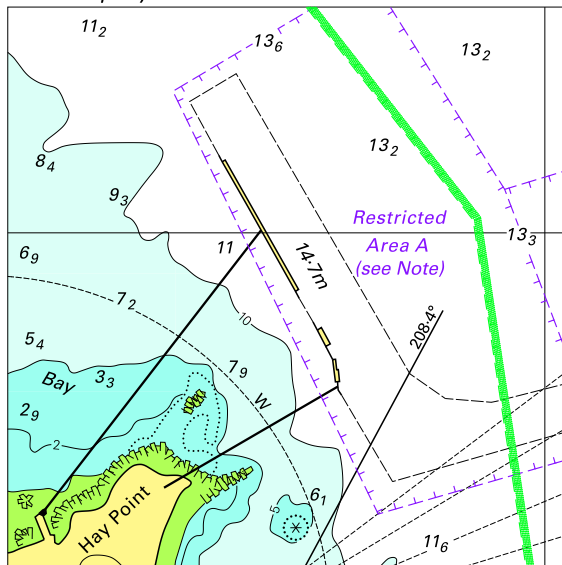
To accompany Australian Notice to Mariners 130/2009

59070	GREEN I. 16° 45' S, 145° 58' E -1000 0.0	1.54	0.543	0.314	0.289	0.154	0.092	0.017	0.048	0.012		
			275.4	243.2	186.9	152.6	0.3	14.2	269.0	233.3		

To accompany Australian Notice to Mariners 130/2009 continued

59070	0.025	0.087	0.174		0.086	0.009		0.021		0.005	0.003	0.012	HYDRO 1999
	123.4	183.1	250.2		240.1	246.8		255.9		27.1	91.1	85.3	

To accompany Australian Notice to Mariners 140/2009

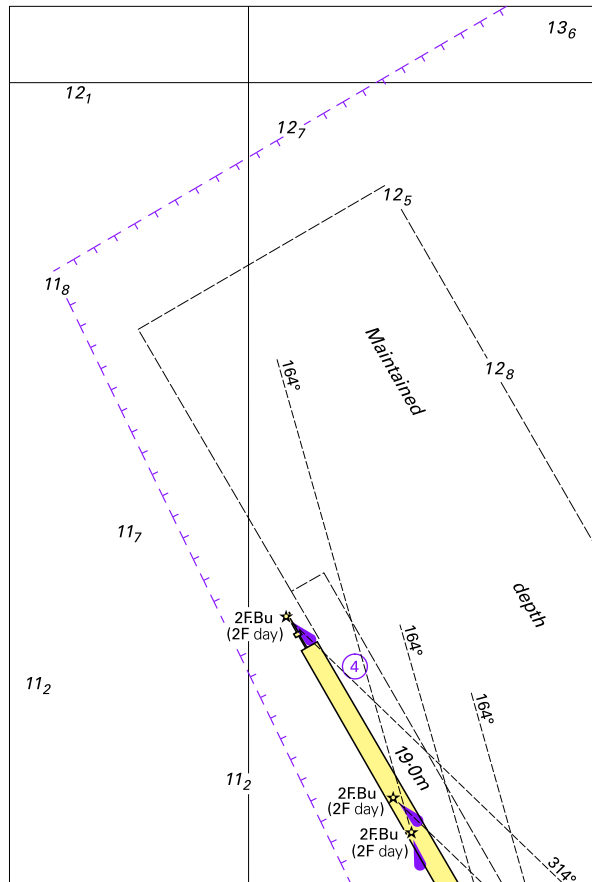


© Commonwealth of Australia 2009

Block for chart Aus 249

(74.2 x 74.0mm)

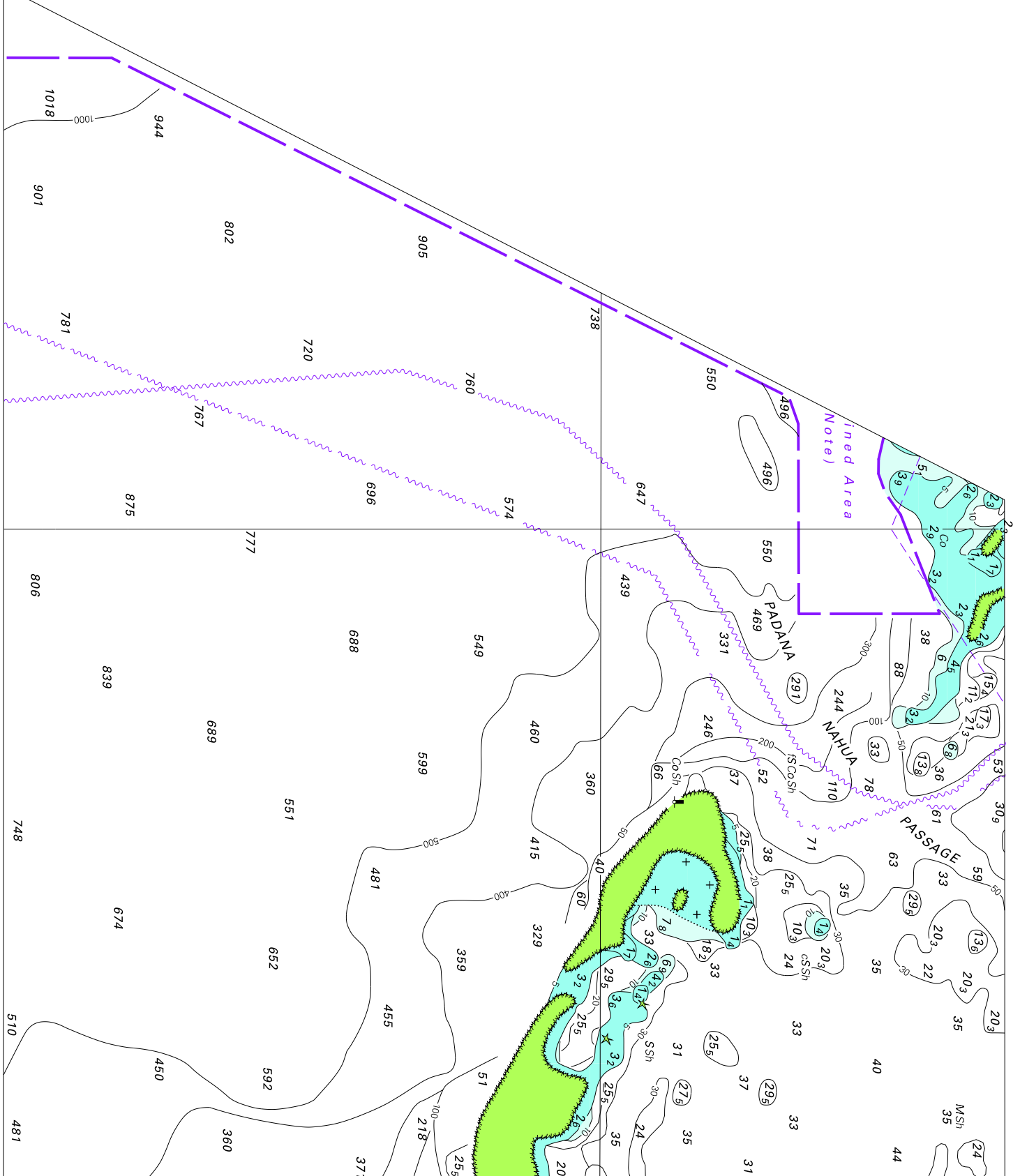
To accompany Australian Notice to Mariners 140/2009



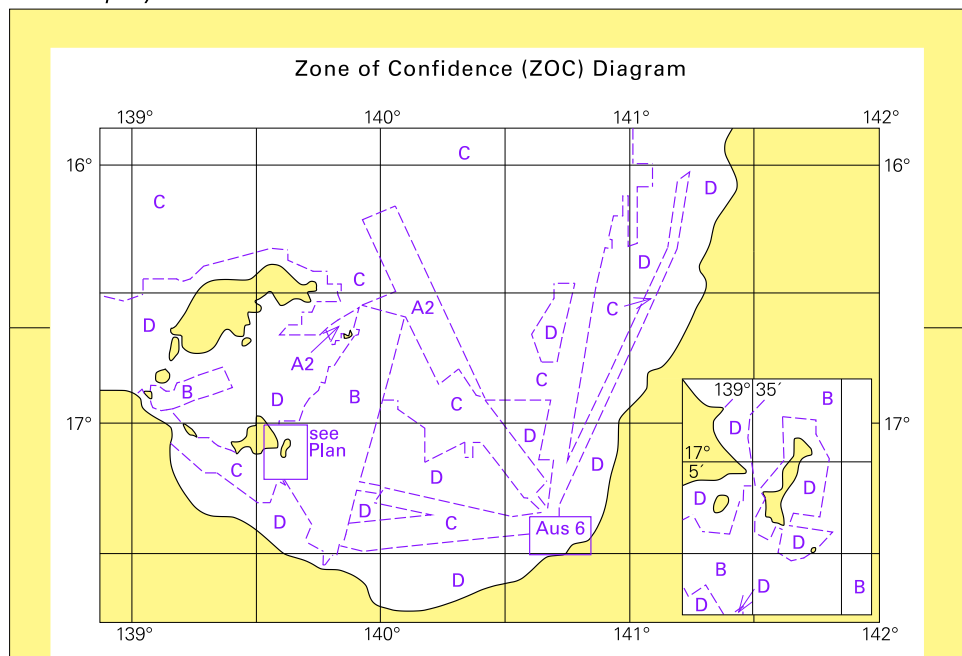
© Commonwealth of Australia 2009

Block for chart Aus 250

(78.3 x 116.1mm)



To accompany Australian Notice to Mariners 150/2009

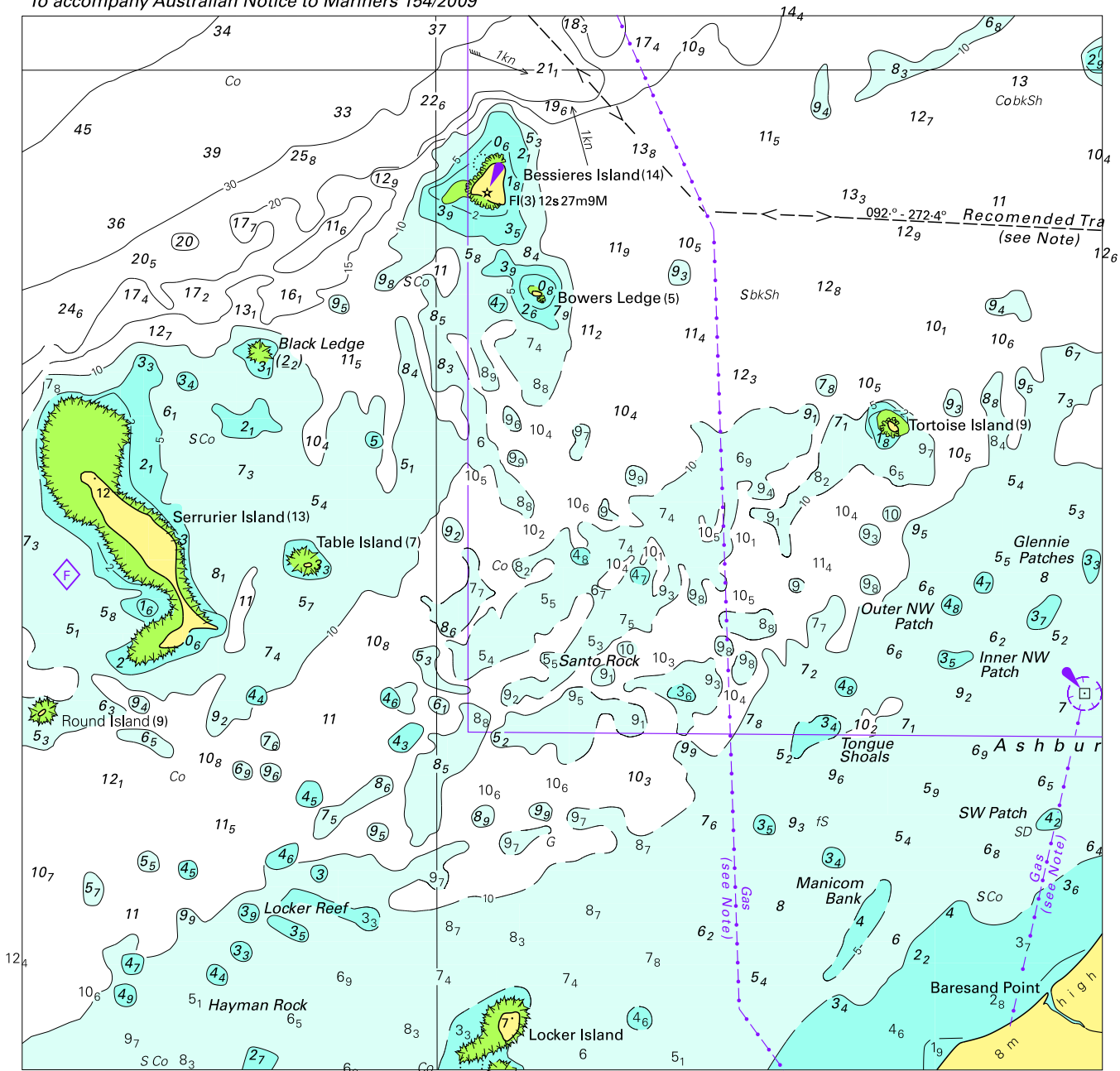


Block for chart Aus 303

© Commonwealth of Australia 2009

(127·3 x 86·5mm)

To accompany Australian Notice to Mariners 154/2009

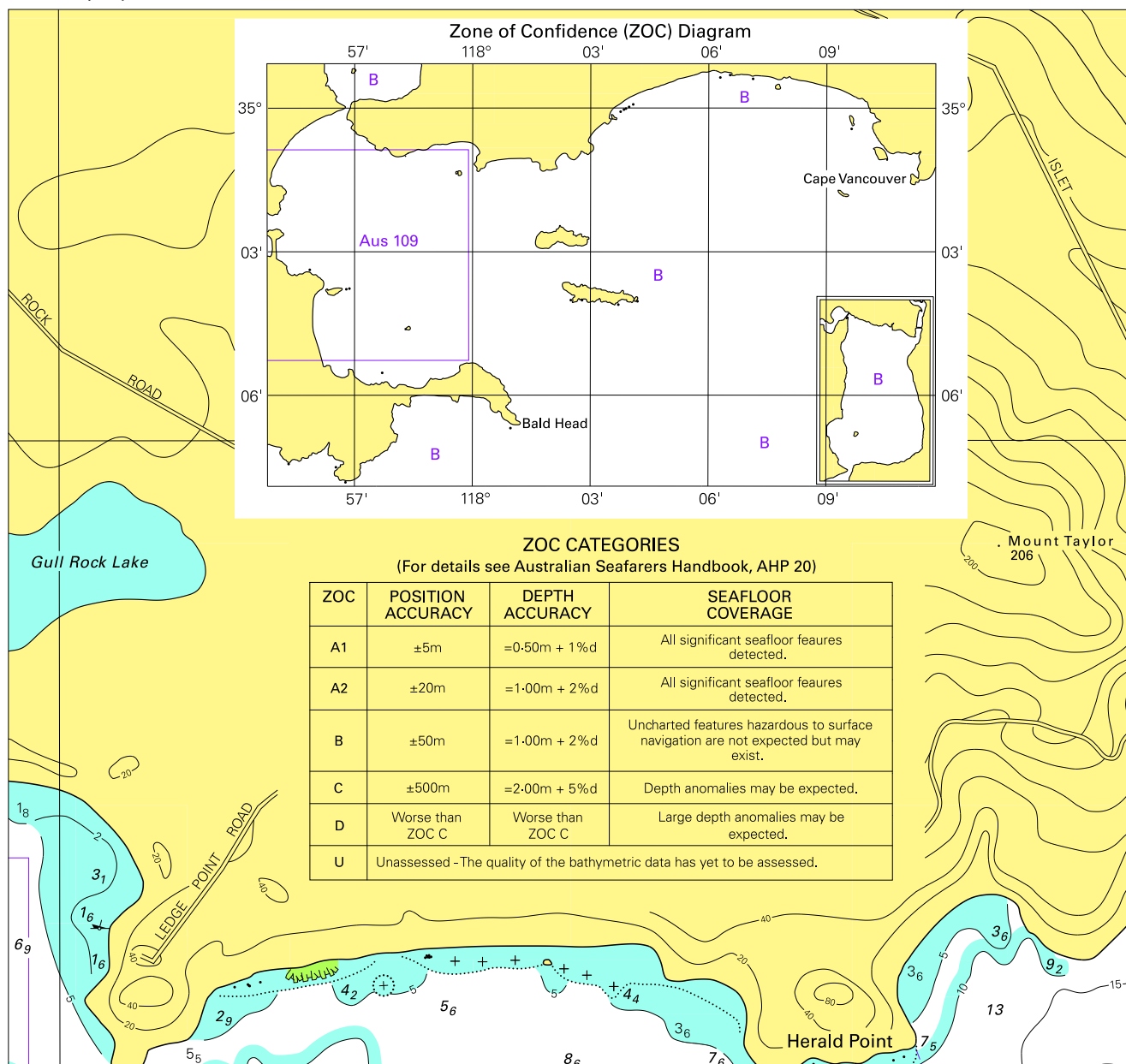


Block for chart Aus 744

© Commonwealth of Australia 2009

(172.6 x 168.4mm)

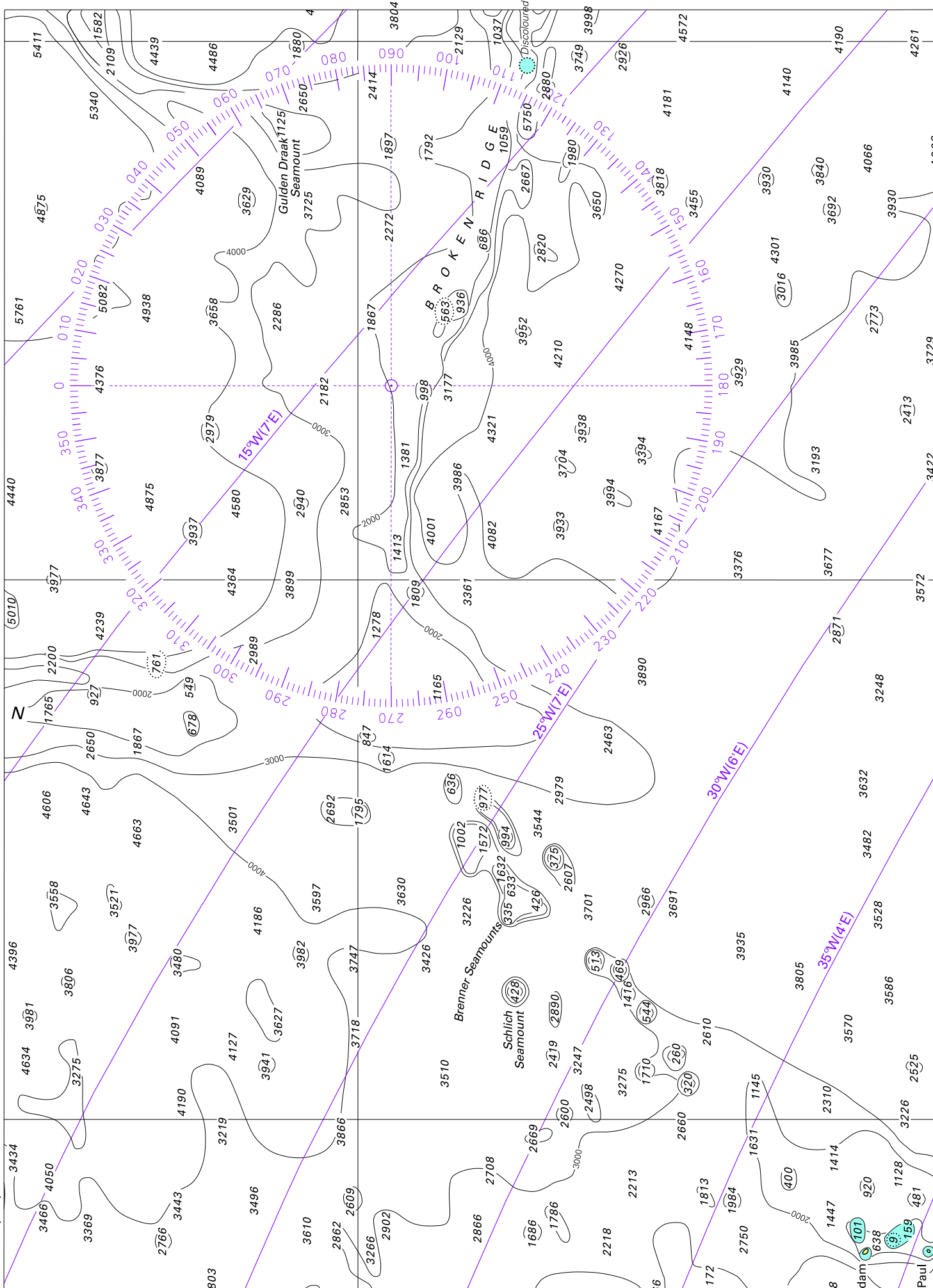
To accompany Australian Notice to Mariners 156/2009



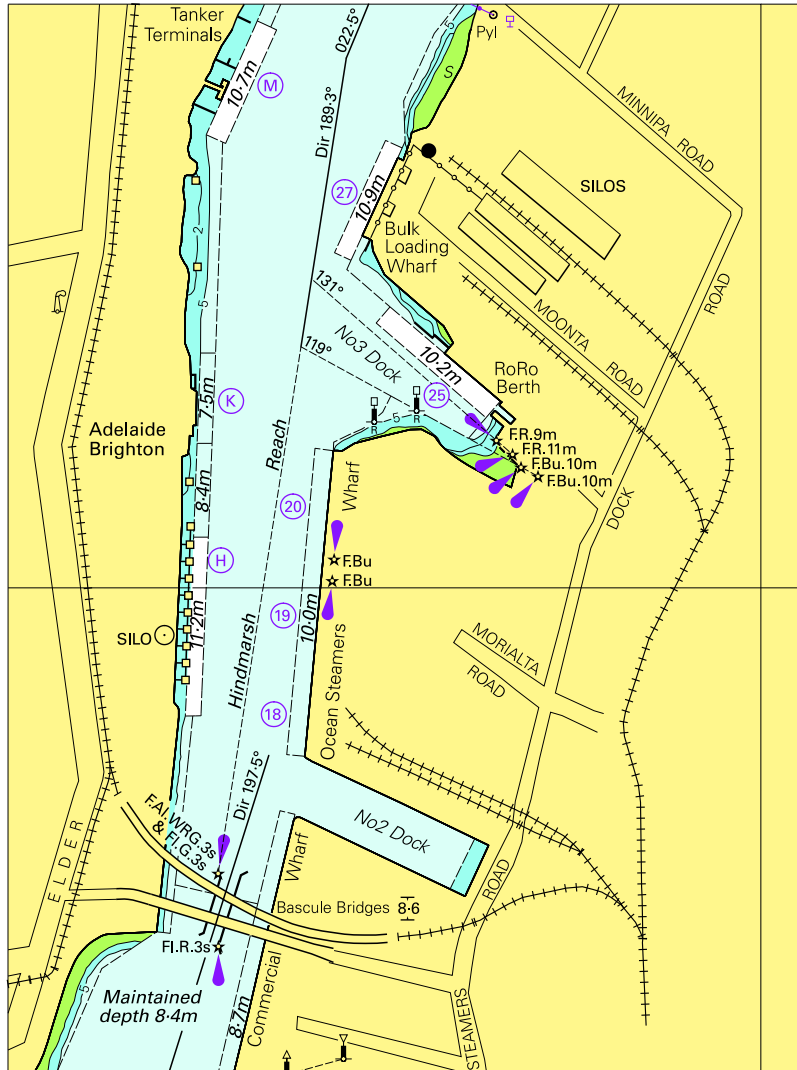
Block for chart Aus 110

© Commonwealth of Australia 2009

(173.7 x 163.4mm)



To accompany Australian Notice to Mariners 159/2009

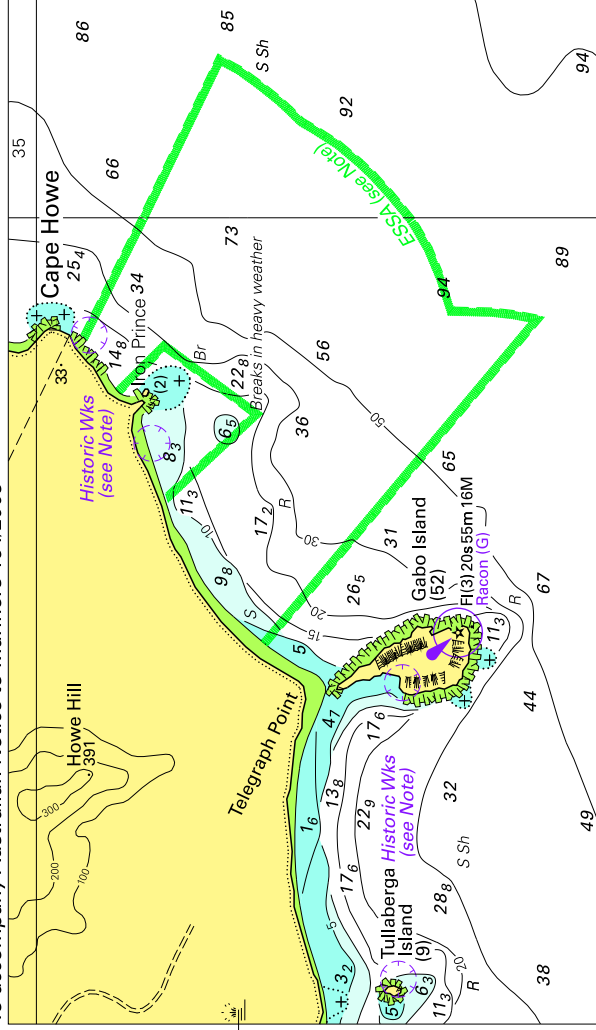


© Commonwealth of Australia 2009

Block for chart Aus 137

(105.6 x 141.3mm)

To accompany Australian Notice to Mariners 164/2009

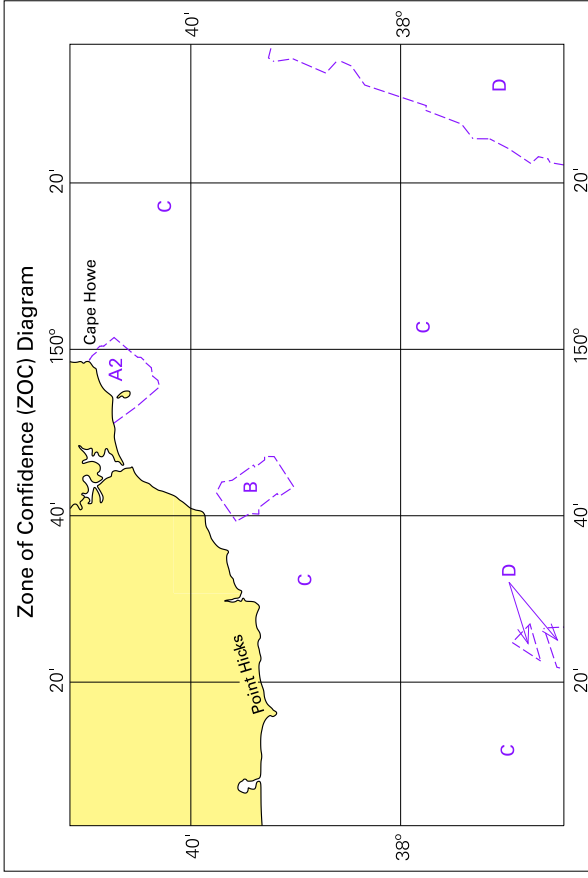


Bolck for chart Aus 805

© Commonwealth of Australia 2009

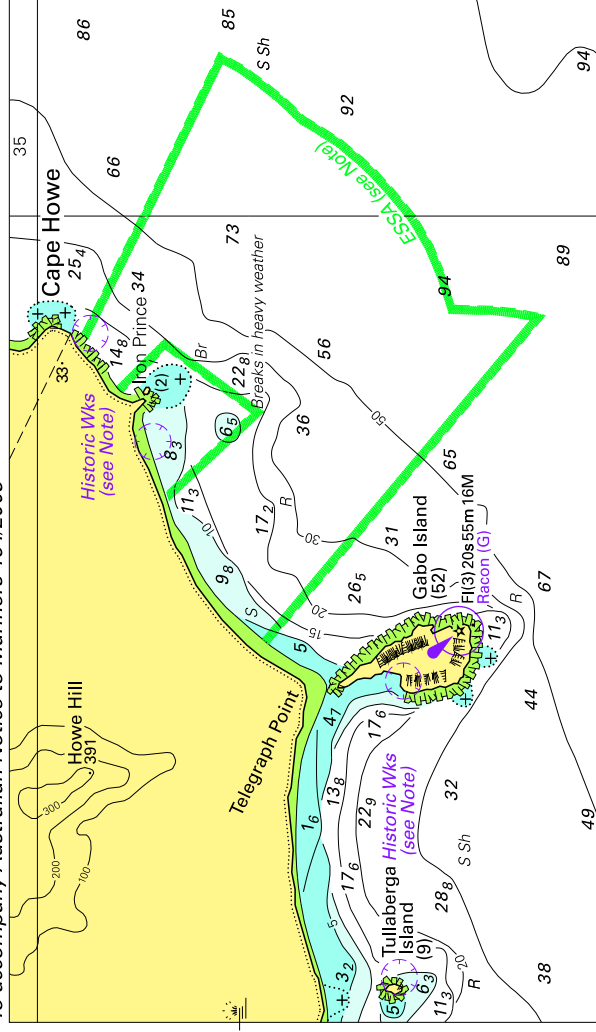
(135-516 x 78-344mm)

To accompany Australian Notice to Mariners 164/2009



Block for chart Aus805 © Commonwealth of Australia 2009 (115.1 x 78.0mm)

To accompany Australian Notice to Mariners 164/2009

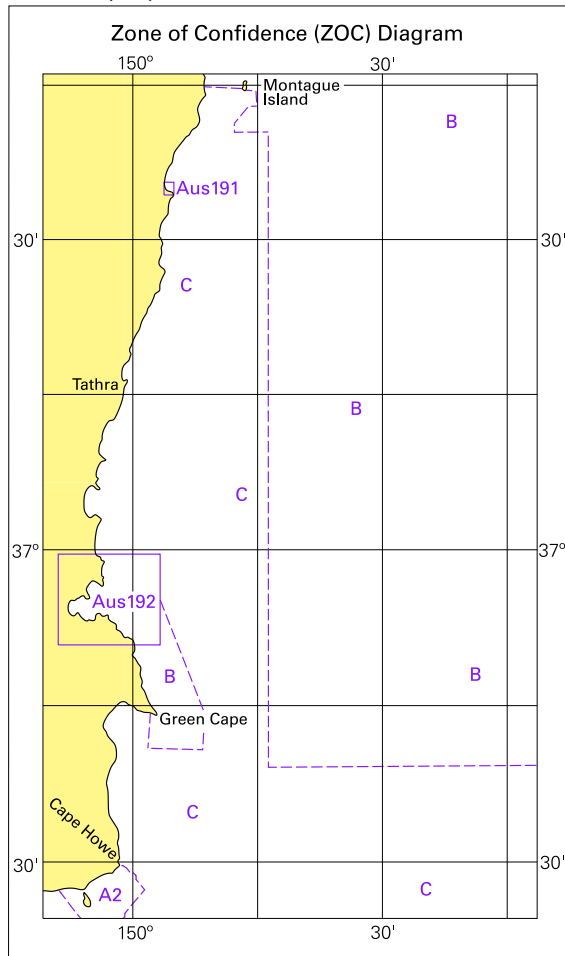


Bolck for chart Aus 806

© Commonwealth of Australia 2009

(135-516 x 78-344mm)

To accompany Australian Notice to Mariners 164/2009



© Commonwealth of Australia 2009
Block for chart Aus806 (73.9 x 126.1mm)