



18 December 2009

FINAL FOR 2009
Edition 25

Australian Notices to Mariners are the authority for correcting Australian Charts and Publications

AUSTRALIAN NOTICES TO MARINERS

Notices 1409 – 1471 



The Hydrographer and Staff of the Australian Hydrographic Service wish all users of Australian Navigational Products a Merry Christmas, a Happy New Year and safe, successful voyages in 2010.



Published fortnightly by the Australian Hydrographic Service

Commodore R. NAIRN RAN
Hydrographer of Australia

SECTIONS.

- I. **Australian Notices to Mariners, including blocks and notes.**
- II. **Hydrographic Reports.**
- III. **Navigational Warnings.**

SUPPLEMENTS.

- I. **Tracings**
- II. **Cumulative List of Australian Notices to Mariners.**
- III. **Temporary and Preliminary Notices in force.**
- IV. **Amendments to Admiralty List of Lights and Fog Signals (Vol K), Radio Signals (NP 281(2), 282, 283(2), 285, 286(4)) and Sailing Directions (NP 9, 13, 14, 15, 33, 34, 35, 36, 39, 44, 51, 60, 61, 62, 100, 136).**

© Commonwealth of Australia 2009

This work is copyright. Apart from any use permitted under the Copyright Act 1968, no part may be reproduced by any process, adapted, communicated or commercially exploited without prior written permission from The Commonwealth represented by the Australian Hydrographic Service.

IMPORTANT NOTICE

This edition of Notices to Mariners includes all significant information affecting AHS products which the AHS has become aware of since the last edition. All reasonable efforts have been made to ensure the accuracy and completeness of the information, including third party information, on which these updates are based. The AHS regards third parties from which it receives information as reliable, however the AHS cannot verify all such information and errors may therefore exist. The AHS does not accept liability for errors in third party information.

GENERAL INSTRUCTIONS

The substance of these notices should be inserted on the charts affected.

Bearings are referred to the true compass and are reckoned clockwise from North; those relating to lights are given as seen by an observer from seaward. Positions quoted in permanent notices relate to the horizontal datum for the chart(s). When preliminary or temporary notices affect multiple charts, positions will be provided in relation to only one horizontal datum and that datum will be specified. When the multiple charts do not have a common horizontal datum, mariners will be required to adjust the position(s) for those charts not on the specified datum. The range quoted for a light is its nominal range. Depths are with reference to the chart datum of each chart. Heights are above mean high water springs or mean higher high water, as appropriate.

The capital letter (P) or (T) after the number of any notice denotes a preliminary or temporary notice respectively, which are contained separately at the end of the permanent notices. A star (*) adjacent to the number of a notice indicates that the notice is based on original information.

REPORTING OF DANGERS

Mariners are particularly requested to notify the AUSTRALIAN HYDROGRAPHIC SERVICE, Locked Bag 8801 Wollongong, NSW 2500 (Fax 02-4223 6599, e-mail Hydro.NTM@defence.gov.au or, alternatively by filling in and submitting the [Hydrographic Notes](#) forms located on the web site – www.hydro.gov.au), immediately on the discovery of new dangers or suspected dangers to navigation. For changes or defects in aids to navigation notify AusSAR (Fax 02-6230 6868 or email rccaus@amsa.gov.au).

AUTHORISED USE

Copies of Australian notices are available free of charge from the Australian Hydrographic Service (AHS) website (www.hydro.gov.au) and through the eNotices (email) service (www.hydro.gov.au/enotices/enotices.htm).

Individual Notices may be copied for the purpose of inserting Notice substance on official charts and publications. Paper copies may be printed by chart agents and distributed to customers on a cost recovery basis. Participating chart agents are listed on the AHS website as providing a 'Paper Notices to Mariners' service (www.hydro.gov.au/prodserv/distributors/distributors.htm). Copies of the notices may not be sold for profit without prior written agreement.

NUMERICAL INDEX OF NOTICES TO MARINERS

Edition No 25

Notices	Aus Chart, INT Chart, ENC Cell
1409.....	AU427153, 428153, 5920P1, 5920P2
1410.....	Aus 198, 199
1411.....	Aus 230
1412.....	Aus 237
1413.....	Aus 241
1414.....	Aus 4602, 4621, INT 602, 621, AX 4621F
1415.....	Aus 254
1416.....	Aus 270
1417.....	Aus 376
1418.....	Aus 518
1419.....	Aus 517
1420.....	Aus 651
1421.....	Aus 308, 442
1422.....	Aus 26, 27, AX 72026
1423.....	Aus 50, 51
1424.....	Aus 53, 740
1425.....	Aus 59
1426.....	Aus 415, 416, AX 0415F
1427.....	Aus 74
1428.....	Aus 449, INT 9035
1429.....	Aus 176, 177, 487, 791, 792, 793, 794,
1430.....	Aus 171, 172
1431.....	Aus 171
1432.....	Aus 169
1433.....	Aus 154, 155
1434.....	Aus 154
1435.....	Aus 801
1436.....	Aus 357A
1437.....	Aus 4060, INT 60
1438(T).....	Aus 198, AU5198X9
1439(T).....	Aus 200, 203, AU5X200W
1440(T).....	Aus 207, 208, AU5XX208
1441(T).....	Aus 236, AU428153
1442(T).....	Aus 238, AU5237X8
1443(T).....	Aus 236, AU428153
1444(T).....	Aus 240, 817
1445(T).....	Aus 246, AU424151
1446(T).....	Aus 246, AU424151
1447(T).....	Aus 245, AU5244X5
1448(T).....	Aus 244, 245, 246, 247, AU424151, 5244X5
1449(T).....	Aus 822, 823, AX 0822E, 0823E, AU322150
1450(T).....	Aus 249, 250, 823, 824, AX 0249E, 0823E, AU422149, 5250P2
1451(T).....	Aus 252, 253, AU421148
1452(T).....	Aus 256, 257, AU5XX257
1453(T).....	Aus 257, AU5XX257
1454(T).....	Aus 263, AU5262X4
1455(T).....	Aus 270
1456(T).....	Aus 378, 502, 4620, 4622, INT 620, 622, AX 4620F, AU210140, 309144
1457(T).....	Aus 6
1458(T).....	Aus 4070, 4071, INT 70, 71
1459(T).....	Aus 319, AX 0319F, AU314123
1460(T).....	Aus 319, 320, AX 0319F, AU314123
1461(T).....	Aus 319, 320, 729, AX 0319F, AU314123
1462(T).....	Aus 322, 323, 324, 415, AX 0322F, 0415F, AU315121, 318121
1463(T).....	Aus 57, 58, 741, AU5XXX58
1464(T).....	Aus 328, 415, 416, 744, 4708, INT 708, AX 0415F, 4708F, AU130090
1465(T).....	Aus 127
1466(T).....	Aus 487, AU340145
1467(T).....	Aus 143, AU439144
1468(T).....	Aus 143, 788, AU439144
1469(T).....	Aus 154, AU5XX154
1470(T).....	Aus 357A, 487, AU439148
1471(T).....	Aus 399, 4622, INT 622, AU306156

ENC Cell	Notices
AU130090	1464(T)
AU210140	1456(T)
AU306156	1471(T)
AU309144	1456(T)
AU314123	1459(T), 1460(T), 1461(T)
AU315121	1462(T)
AU318121	1462(T)
AU322150	1449(T)
AU340145	1466(T)
AU421148	1451(T)
AU422114	1464(T)
AU422149	1450(T)
AU424151	1445(T), 1446(T), 1448(T)
AU427153	1409
AU428153	1409, 1441(T), 1443(T)
AU439144	1467(T), 1468(T)
AU439148	1470(T)
AU5XX58.....	1463(T)
AU5XX154	1469(T)
AU5198X9.....	1438(T)
AU5X200W	1439(T)
AU5XX208	1440(T)
AU5237X8.....	1442(T)
AU5244X5.....	1447(T), 1448(T)
AU5250P2.....	1450(T)
AU5XX257	1452(T), 1453(T)
AU5262X4.....	1454(T)
AU5920P1.....	1409
AU5920P2.....	1409

1409 AUSTRALIA - Product

Australian Hydrographic Service (AA445075)

New Electronic Navigation Chart (Seafarer ENC)

<i>Cell Name</i>	<i>Released</i>	<i>Title</i>
AU427153	December 2009	Coral Sea - Northern Approaches to Moreton Bay
AU428153	December 2009	Coral Sea - Gold Coast Seaway to Cape Moreton including Moreton Bay
AU5920P1	December 2009	Indian Ocean - Christmas Island - Flying Fish Cove
AU5920P2	December 2009	Indian Ocean - Christmas Island - Norris Point

For further details refer to the AHS website at www.hydro.gov.au for new edition and new chart stock arrival information.

When placing orders with a chart agent, mariners should advise whether their order pertains to the current edition or the new edition.

1410* AUSTRALIA - NEW SOUTH WALES - Botany Bay - Dolls Point - Light beacon withdrawn; light removed

NSW Maritime (AA324551, AA324550)

Aus 198 [1210/2009]

Delete	light beacon	33° 59'.84 S	151° 08'.66 E
	light	33° 59'.82 S	151° 08'.75 E

Aus 199 [1350/2009]

Delete	light beacon	33° 59'.84 S	151° 08'.66 E
	light	33° 59'.82 S	151° 08'.75 E

1411* AUSTRALIA - QUEENSLAND - Gold Coast Seaway - Light beacons established

Maritime Safety Queensland Notice 782/2009 (AA441625)

Aus 230 [1214/2009]

Insert	light beacon, <i>Fl.R.2-5s</i> , with port lateral topmark	27° 55'.152 S	153° 24'.630 E
	light beacon, <i>Fl.R.2-5s</i> , with port lateral topmark	27° 55'.055 S	153° 24'.695 E
Delete	depth, 1 ₁ m	27° 55'.12 S	153° 24'.62 E
	depth, 1 ₅ m	27° 55'.03 S	153° 24'.67 E

1412* AUSTRALIA - QUEENSLAND - Brisbane River - Pelican Banks Reach - Light buoy established; light buoy withdrawn*Former Notice - 436(T)/2009 is cancelled*

Maritime Safety Queensland Notice 786/2009 (AA441676)

Aus 237 [935/2009]

Insert	port lateral cylindrical light buoy, <i>Q.R.</i> , without topmark	27° 23'.462 S	153° 09'.334 E
Delete	light buoy	27° 23'.41 S	153° 09'.22 E

1413* AUSTRALIA - QUEENSLAND - Great Sandy Strait - Submarine power cable

C-Map (AA441999)

Aus 241 [816/2009]

Substitute	submarine power cable for pipeline, between	25° 24'.12 S	152° 54'.91 E
		25° 23'.61 S	153° 01'.44 E

1414* PACIFIC OCEAN - Cato Island to Woodlark Island - Submarine cable
 PIPE International (AA437574, AA437575)

Aus 4602 (INT 602) [1306/2009]

Insert	submarine cable, between	16° 00'.0 S	154° 45'.7 E
		17° 02'.3 S	154° 54'.6 E
		17° 32'.0 S	154° 48'.0 E
		18° 04'.4 S	154° 15'.1 E
		18° 26'.9 S	154° 10'.6 E
		18° 43'.4 S	154° 12'.0 E
		18° 55'.8 S	154° 16'.7 E
		19° 19'.2 S	154° 42'.0 E
		19° 38'.2 S	154° 56'.0 E
		21° 18'.9 S	155° 26'.9 E
		21° 36'.2 S	155° 32'.3 E
		21° 53'.7 S	155° 41'.8 E
		22° 17'.1 S	155° 41'.3 E
		22° 44'.3 S	155° 16'.8 E
		23° 11'.9 S	155° 02'.6 E
		23° 39'.4 S	154° 58'.1 E
		23° 48'.9 S	155° 01'.0 E
		24° 15'.0 S	155° 00'.4 E

Delete	submarine cable, between	16° 00'.0 S	154° 45'.7 E
		17° 00'.3 S	154° 54'.6 E
		17° 04'.0 S	154° 48'.0 E
		18° 00'.4 S	154° 15'.1 E
		18° 02'.9 S	154° 10'.6 E
		18° 04'.4 S	154° 12'.0 E
		18° 05'.8 S	154° 16'.7 E
		19° 01'.2 S	154° 42'.0 E
		19° 03'.2 S	154° 56'.0 E
		21° 00'.4 S	155° 24'.7 E
		21° 03'.2 S	155° 32'.3 E
		21° 05'.7 S	155° 41'.8 E
		22° 01'.1 S	155° 41'.3 E
		22° 04'.2 S	155° 16'.1 E
		23° 13'.1 S	155° 02'.2 E
		23° 38'.6 S	154° 58'.0 E
		23° 50'.0 S	155° 01'.1 E
		24° 15'.0 S	155° 00'.4 E

Aus 4621 (INT621) [1306/2009]

Insert	submarine cable, between	8° 28'.6 S	154° 37'.0 E
		8° 25'.2 S	154° 49'.2 E
		8° 26'.6 S	154° 58'.6 E

Delete	submarine cable, between	8° 28'.6 S	154° 37'.0 E
		8° 26'.6 S	154° 58'.6 E

AX 4621F [1306/2009]

Insert	submarine cable, between	8° 28'.6 S	154° 37'.0 E
		8° 25'.2 S	154° 49'.2 E
		8° 26'.6 S	154° 58'.6 E

Delete	submarine cable, between	8° 28'.6 S	154° 37'.0 E
		8° 25'.2 S	154° 49'.2 E
		8° 25'.3 S	154° 54'.6 E
		8° 26'.6 S	154° 58'.6 E

Note: Tracings in NTM 1306/2009 are correct.

1415* AUSTRALIA - QUEENSLAND - Hamilton Island - Infrastructure; pipeline
Maritime Safety Queensland (AA435550 - AA435554)

Aus 254 (plan, Hamilton and Dent Islands) [1309/2009]

Insert accompanying block 20° 20'.8 S 148° 56'.7 E

1416* AUSTRALIA - QUEENSLAND - Cooktown - Light beacon; maintained depth
Australian Hydrographic Service (AA444859)

Aus 270 (plan, Cooktown) [594/2009]

On certain copies only

Insert legend, 4-0m 15° 27'.54 S 145° 15'.00 E

Amend light to *Fl.R.2.5s* 15° 27'.47 S 145° 15'.09 E

1417* AUSTRALIA - Torres Strait - Chart note
Australian Hydrographic Service (AA439314)

Aus 376 [1268/2009]

Delete note, EXCLUSIVE ECONOMIC ZONE 9° 05'.0 S 141° 52'.0 E

1418* PAPUA NEW GUINEA - Goschen Strait to Ward Hunt Strait - Chart note
Australian Hydrographic Service (AA439557)

Aus 518 [524/2008]

Substitute accompanying note for NA note 9° 43'.3 S 149° 44'.5 E

1419* PAPUA NEW GUINEA - Trobriand Islands to Ward Hunt Strait - Chart note
Australian Hydrographic Service (AA439557)

Aus 517 [723/2007]

Delete note, OMISSIONS FROM CHART 8° 54'.5 S 150° 04'.0 E

1420* PAPUA NEW GUINEA - Wewak Harbour - Light beacons altered
National Maritime Safety Authority PNG (AA422996)

Aus 651 (plan, Wewak Wharves) [NC 18/1/2008]

Amend light range to 4M 3° 33'.72 S 143° 38'.88 E

Aus 651 (plan, Wewak Harbour)

Amend light range to 4M 3° 33'.72 S 143° 38'.88 E

light range to 4M 3° 33'.29 S 143° 37'.91 E

1421* AUSTRALIA - NORTHERN TERRITORY - South Goulburn Island to Grant Island - Depths
 HMAS *Benalla* and *Shepparton* (DHDB 1400412)

Aus 308 [1158/2009]

Insert	depth, <i>3₂fm</i> , enclosed by contour	11° 40'.27 S	133° 20'.50 E
	depth, <i>3fm</i> , enclosed by contour	11° 34'.85 S	133° 21'.56 E
	depth, <i>4₄fm</i> , enclosed by contour	11° 10'.40 S	132° 50'.71 E
	depth, <i>4fm</i> , enclosed by contour	11° 08'.30 S	132° 46'.84 E
	depth, <i>6₂fm</i> , enclosed by contour	11° 09'.37 S	132° 47'.40 E
Delete	depth, 4fm, and enclosing contour	11° 34'.9 S	133° 20'.3 E
	depth, 5 ₁ fm, and enclosing contour with legend, Unexam(1968)	11° 10'.5 S	132° 51'.3 E
	depth, 15fm	11° 10'.9 S	132° 50'.8 E
	depth, 5 ₃ fm, and enclosing contour with legend, Rep(1988)	11° 09'.9 S	132° 47'.9 E
	depth, 5 ₂ fm, and enclosing contour	11° 08'.6 S	132° 47'.0 E
	depth, 8 ₅ fm, and enclosing contour with legend Rep(1983)	11° 09'.7 S	132° 49'.6 E

Aus 442 [598/2009]

Insert	depth, <i>3₂fm</i> , enclosed by contour	11° 40'.27 S	133° 20'.50 E
	depth, <i>3fm</i> , enclosed by contour	11° 34'.85 S	133° 21'.56 E
	depth, <i>4₄fm</i> , enclosed by contour	11° 10'.40 S	132° 50'.71 E
Substitute	depth, <i>4fm</i> , for depth, 5 ₂ fm	11° 08'.3 S	132° 46'.8 E
	depth, <i>6₂fm</i> , for depth, 5 ₃ fm	11° 09'.5 S	132° 47'.7 E
Delete	depth, 9fm	11° 40'.6 S	133° 20'.1 E
	depth, 4fm, and enclosing contour	11° 34'.9 S	133° 20'.3 E
	depth, 5 ₁ fm, and enclosing contour with legend, Unexam(1968)	11° 10'.5 S	132° 51'.3 E
	depth, 15fm	11° 10'.7 S	132° 50'.6 E
	depth, 9fm	11° 34'.5 S	133° 20'.8 E
	legend, Rep(1968)	11° 09'.3 S	132° 46'.5 E

1422* AUSTRALIA - NORTHERN TERRITORY - Darwin - Middle Arm - Lit mooring buoy withdrawn
 Darwin Port Authority (AA441806)

Aus 26 [1269/2009]

Delete	lit mooring buoy	12° 33'.3 S	130° 51'.1 E
--------	------------------	-------------	--------------

Aus 27 [1098/2009]

Delete	lit mooring buoy	12° 33'.32 S	130° 51'.05 E
--------	------------------	--------------	---------------

AX 72026 [1269/2009]

Delete	lit mooring buoy	12° 33'.3 S	130° 51'.1 E
--------	------------------	-------------	--------------

1423* AUSTRALIA - WESTERN AUSTRALIA - Broome - Light buoy established; light buoy repositioned

Former Notice - 1328(P)/2009 is cancelled
 Broome Port Authority Notice 30/2009 (AA442110)

Aus 50 [1224/2009]

Insert	port lateral pillar light buoy, <i>Oc.R.3s</i> , without topmark	18° 00'.75 S	122° 12'.42 E
--------	--	--------------	---------------

Aus 51 [1224/2009]

Insert	port lateral pillar light buoy, <i>Oc.R.3s</i> , without topmark	18° 00'.666 S	122° 12'.502 E
--------	--	---------------	----------------

Move	light buoy	18° 00'.44 S	122° 12'.92 E
	to	18° 00'.433 S	122° 12'.917 E

1424* AUSTRALIA - WESTERN AUSTRALIA - Port Hedland - Light beacons

Australian Maritime Safety Authority (AA443824)

*On certain copies only***Aus 53 [709/2009]**

Amend	light to <i>Fl.R.2s 8m 6M</i>	19° 59'.7 S	118° 26'.4 E
	light to <i>Fl.R.2s 8m 6M</i>	20° 02'.4 S	118° 25'.1 E
	light to <i>Fl.R.2s 8m 6M</i>	20° 03'.9 S	118° 25'.2 E

Aus 740 [1361/2009]

Amend	light to <i>Fl.2s 6M</i>	20° 06'.5 S	118° 28'.1 E
	light to <i>Fl.R.2s 6M</i>	20° 06'.4 S	118° 28'.2 E

1425* AUSTRALIA - WESTERN AUSTRALIA - Dampier - Infrastructure; nav aids

Department of Transport WA, Woodside Energy Ltd (AA427645), Mermaid Marine Australia Ltd (AA416284 - AA416286)

Aus 59 (plan, Withnell Bay to King Bay) [999/2009]

Insert	accompanying block	20° 37'.4 S	116° 44'.5 E
--------	--------------------	-------------	--------------

1426* AUSTRALIA - WESTERN AUSTRALIA - Muiron Islands - Oil field

BHP Billiton Petroleum Pty Ltd (AA438414 - AA438416)

Aus 415 [1226/2009]

Insert	accompanying block	21° 35'.0 S	114° 00'.0 E
--------	--------------------	-------------	--------------

Aus 416 [1226/2009]

Insert	accompanying block	21° 35'.0 S	114° 00'.0 E
--------	--------------------	-------------	--------------

AX 0415F [1226/2009]

Insert	accompanying block	21° 35'.0 S	114° 00'.0 E
--------	--------------------	-------------	--------------

1427* AUSTRALIA - WESTERN AUSTRALIA - Useless Loop - Chart note

Australian Hydrographic Service (AA438059)

Aus 74 [NC 30/1/2009]

Insert	accompanying note	26° 07'.2 S	113° 12'.6 E
--------	-------------------	-------------	--------------

1428* AUSTRALIA - Magnet Bay to Cape Rouse - Chart note

Australian Hydrographic Service (AA439659)

Aus 449 (INT 9035) [1085/2006]

Insert	accompanying note	67° 58'.0 S	57° 50'.0 E
--------	-------------------	-------------	-------------

1429* AUSTRALIA - TASMANIA - West Point to South West Cape - Depths

Geoscience Australia (DHDB 1394029)

Aus 176 [161/2009]

Insert	depth, 33m, semi-enclosed by contour with legend, SD	43° 14'.657 S	145° 43'.549 E
	depth, 22m, and extend contour SE to enclose with legend, SD	43° 25'.500 S	145° 53'.948 E
Delete	depth, 27 ₅ m	43° 25'.37 S	145° 53'.82 E

Aus 177 [160/2009]

Insert	depth, 49m, enclosed by contour	42° 08'.89 S	145° 09'.48 E
Delete	depth, 57m	42° 09'.0 S	145° 09'.0 E

Aus 487 [1274/2009]

Insert	depth, 12 ₈ m, enclosed by contour with legend, SD	40° 57'.89 S	144° 34'.58 E
Delete	depth, 25 ₆ m	40° 57'.7 S	144° 34'.1 E

Aus 791 [491/2009]

Insert	depth, 12 ₈ m, enclosed by contour with legend, SD	40° 57'.89 S	144° 34'.58 E
	depth, 25 ₃ m, enclosed by contour with legend, SD	41° 15'.30 S	144° 38'.50 E

Aus 792 [967/2008]

Insert	depth, 49m, enclosed by contour	42° 08'.89 S	145° 09'.48 E
Delete	depth, 57m	42° 09'.0 S	145° 09'.0 E

Aus 793 [1187/2008]

Insert	depth, 33m, and extend contour S to enclose with legend, SD	43° 14'.66 S	145° 43'.55 E
	depth, 22m, and extend contour SE to enclose with legend, SD	43° 25'.50 S	145° 53'.95 E
	depth, 35m, and extend contour NE to enclose with legend, SD	43° 29'.00 S	145° 57'.15 E
Delete	depth, 38m	43° 14'.3 S	145° 43'.7 E
	depth, 27 ₅ m	43° 25'.4 S	145° 53'.8 E
	depth, 49m	43° 29'.1 S	145° 56'.9 E

Aus 794 [1241/2008]

Insert	depth, 35m, and extend contour NE to enclose with legend, SD	43° 29'.00 S	145° 57'.15 E
Delete	depth, 49m	43° 29'.1 S	145° 56'.9 E

1430* AUSTRALIA - TASMANIA - River Derwent - Hobart - Light buoys altered

Bellerive Yacht Club (AA443786 - AA443788), Marine and Safety Tasmania Notice M123/2009 (AA430672)

Aus 171 [1061/2009]

Insert	special pillar light buoy, Q.Y.BYC1, without topmark	42° 53'.35 S	147° 22'.35 E
	special pillar light buoy, Q.BYC2, with circular topmark	42° 53'.90 S	147° 22'.85 E
Delete	light buoy	42° 53'.3 S	147° 22'.5 E
	buoy	42° 53'.8 S	147° 22'.9 E

Aus 172 [1170/2009]

Insert	special pillar light buoy, Q.Y.BYC1, without topmark	42° 53'.35 S	147° 22'.35 E
Delete	light buoy	42° 53'.28 S	147° 22'.47 E

1431* AUSTRALIA - TASMANIA - Nubeena - Light altered

Marine and Safety Tasmania Notice M177/2009 (AA442538)

Aus 171 [1430/2009]

Amend	light to <i>Fl.Bu.1-5s 3M</i>	43° 06'.24 S	147° 44'.46 E
-------	-------------------------------	--------------	---------------

1432* AUSTRALIA - TASMANIA - Georges Bay - Buoy repositioned*Former Notice - 1203(T)/2009 is cancelled*

Marine and Safety Tasmania Notice M176/2009 (AA442536)

Aus169 (plan, Georges Bay) [1314/2009]

Move	buoy	41° 16'.18 S	148° 20'.28 E
	to	41° 16'.232 S	148° 20'.293 E
Delete	depth, 4 ₉ m	41° 16'.25 S	148° 20'.31 E

1433* AUSTRALIA - VICTORIA - Port Phillip - Eastern By-pass Channel - Light beacons altered

Victorian Notice 172/2009 (AA444821)

Aus 154 [1372/2009]

Amend	legend to T25	37° 52'.49 S	144° 55'.92 E
-------	---------------	--------------	---------------

Aus 155 [1372/2009]

Amend	legend to T19	37° 54'.56 S	144° 55'.91 E
	legend to T21	37° 53'.89 S	144° 55'.91 E
	legend to T23	37° 53'.17 S	144° 55'.95 E
	legend to T25	37° 52'.47 S	144° 56'.00 E

1434* AUSTRALIA - VICTORIA - Port Phillip - Port Melbourne - River Yarra - Lights altered*Former Notice - 1206(P)/2009 is cancelled*

Port of Melbourne Corporation (AA444826)

Aus 154 [1433/2009]

Amend	light to F.G	37° 49'.31 S	144° 54'.80 E
	light to F.G	37° 49'.27 S	144° 54'.80 E

Note: Other data will be incorporated into new edition early 2010.

1435* AUSTRALIA - VICTORIA - Anderson Inlet - Light buoy repositioned; light altered

Victorian Notice 169/2009 (AA441635)

Aus 801 [1231/2009]

Move	light buoy	38° 39'.5 S	145° 42'.7 E
	to	38° 39'.39 S	145° 43'.25 E

Amend	light to <i>Oc.3s 18m 10M</i>	38° 38'.4 S	145° 43'.0 E
-------	-------------------------------	-------------	--------------

1436* AUSTRALIA - VICTORIA - Bass Strait - Pipeline*Former Notice - 1041(T)/2009 is cancelled*

Nexus Energy (AA442509 - AA442511)

Aus 357A [74/2009]

Insert	accompanying block	38° 03'.0 S	148° 22'.0 E
--------	--------------------	-------------	--------------

1437* PACIFIC OCEAN - Samoa - Submarine cables

Land Information New Zealand (AA442901 - AA442904)

Aus 4060 (INT 60) [1359/2009]

Insert	accompanying block	10° 00'.0 S	170° 00'.0 W
--------	--------------------	-------------	--------------

1438(T)/2009 AUSTRALIA - NEW SOUTH WALES - Georges River - Light beacon removed; light buoy established
NSW Maritime (AA223961, AA223962, AA444947)

The light beacon, *Fl.G.3s* (34° 00'.59 S 151° 08'.03 E), has been removed.

A starboard lateral conical light buoy, *Fl.G.3s*, exists in position 34° 00'.61 S 151° 08'.01 E.

Chart temporarily affected - Aus 198 - AU5198X9

1439(T)/2009 AUSTRALIA - NEW SOUTH WALES - Port Jackson - Homebush Bay - Scientific instruments; piles; silt curtain

Former Notice - 650(T)/2007 is cancelled

Date - Until 30 June 2010

Homebush Bay and Lednez Remediation Projects (AA255104, AA255105, AA255106), Thiess Services Pty Ltd (AA441189, AA441190)

Special conical light buoys exist in the following positions (WGS84 datum):

33° 50'.02 S 151° 04'.80 E
33° 49'.43 S 151° 05'.04 E
33° 49'.79 S 151° 04'.84 E
33° 49'.71 S 151° 04'.88 E
33° 49'.99 S 151° 04'.83 E
33° 49'.90 S 151° 04'.77 E
33° 49'.80 S 151° 04'.85 E
33° 49'.72 S 151° 04'.88 E
33° 49'.98 S 151° 04'.83 E
33° 49'.90 S 151° 04'.78 E.

A containment barrier supported by piles exists between the following positions:

33° 49'.57 S 151° 05'.02 E
33° 49'.42 S 151° 05'.15 E
33° 49'.40 S 151° 05'.13 E
33° 49'.34 S 151° 05'.19 E
33° 49'.37 S 151° 05'.23 E
33° 49'.38 S 151° 05'.23 E
33° 49'.38 S 151° 05'.24 E.

A silt curtain exists in the area surrounding the piles.

Chart temporarily affected - Aus 200 - Aus 203 - AU5X200W

1440(T)/2009 AUSTRALIA - NEW SOUTH WALES - Newcastle - Depth information

Former Notice - 1282(T)/2009 is cancelled

Newcastle Port Corporation (AA445497)

Available depths as at 14 December 2009:

<i>Berth</i>	<i>Metres</i>
Western Basin 3	11.6
Western Basin 4	11.6
* Eastern Basin 1	11.2
* Eastern Basin 2 North of Ch 450	11.5
* Eastern Basin 2 South of Ch 450	11.0
* Dockyard 2 (Dredge)	4.0
* Channel Berth (formerly Dockyard 4)	8.3
Dyke 1	12.8
* Dyke 2	12.6
Dyke 4	16.5
Dyke 5	16.5
Dyke 6	6.3
* Mayfield 4 Ch 50 to 266	9.5
* BHP Wharf 6 to Ch 1050	7.1
Kooragang 2	11.6
Kooragang 2 North Dolphin	11.0
Kooragang 2 South Dolphin	11.0
Kooragang 3	13.0
Kooragang 4	16.5
* Kooragang 5	16.3
Kooragang 6	16.3
Kooragang Ship Receiving KSR	8.0
Throsby 1	9.5
Carrington wharf	To be sounded as and when required
Former Tug berth 4	6.5
Elgo wharf	To be sounded as and when required
<i>Channels</i>	
Entrance Approach	17.7
Entrance Channel (18.0m)	18.0
Entrance Channel (17.4m)	17.4
Entrance Channel (16.8m)	16.8
Entrance Channel (16.2m)	16.1
Entrance Channel to Horseshoe	15.2
* Horseshoe	15.2
Steelworks Channel to Swinging Basin	15.0
Swinging Basin	15.0
* Swinging Basin to Mayfield 4	9.5
Basin Cutting	12.8
* Basin Area to Eastern & Western Basin Berths	12.3
Basin Area to 1 Throsby	10.0
Stockton Crossing	3.6

* Indicates revised entry.

Chart temporarily affected - Aus 207 - Aus 208 - AU5XX208**1441(T)/2009 AUSTRALIA - QUEENSLAND - Moreton Bay - Lamb Island - Clarkes Point - Light beacon destroyed; light buoy established**

Maritime Safety Queensland Notice 801(T)/2009 (AA443377)

The starboard lateral light beacon (27° 36'.49 S 153° 24'.26 E) has been destroyed; a starboard lateral light buoy, *Fl.G.2-5s*, has been established in situ.**Chart temporarily affected - Aus 236 - AU428153**

1442(T)/2009 AUSTRALIA - QUEENSLAND - Brisbane River - Hamilton Reach to Town Reach - Drilling operations completed

Former Notice - 1375(T)/2009 is cancelled

Maritime Safety Queensland Notice 771(T)/2009 (AA441680)

Cancel this notice on receipt.

Chart formerly affected - Aus 238 - AU5237X8

1443(T)/2009 AUSTRALIA - QUEENSLAND - Moreton Bay - Light beacon destroyed; light buoy established

Maritime Safety Queensland Notice 816(T)/2009 (AA444942)

The port lateral light beacon (27° 06'.62 S 153° 12'.03 E) has been destroyed; a port lateral light buoy, *Q.R.*, has been established in situ.

Chart temporarily affected - Aus 236 - AU428153

1444(T)/2009 AUSTRALIA - QUEENSLAND - Great Sandy Strait - Poona Point - Light buoys established

Maritime Safety Queensland Notice 829(T)/2009 (AA445523)

White spar light buoys, *Q(3)Y.10s*, exist in positions 25° 41'.49 S 152° 55'.32 E and 25° 43'.14 S 152° 56'.34 E (WGS84 datum).

Chart temporarily affected - Aus 240 - Aus 817

1445(T)/2009 AUSTRALIA - QUEENSLAND - Gladstone - South Channel - Boyne Cutting - Light beacon destroyed; light buoy established

Maritime Safety Queensland Notice 837(T)/2009 (AA445615)

S14 light beacon (23° 55'.90 S 151° 27'.42 E) has been destroyed; a port lateral light buoy, *Fl.R.4s*, has been established in situ.

Chart temporarily affected - Aus 246 - AU424151

1446(T)/2009 AUSTRALIA - QUEENSLAND - Gladstone - South Channel - Golding Cutting - Obstruction

Maritime Safety Queensland Notice 820(T)/2009 (AA444932)

An obstruction marked by a special buoy exists in position 23° 55'.81 S 151° 26'.45 E.

Mariners are advised to navigate with caution in the area.

Chart temporarily affected - Aus 246 - AU424151

1447(T)/2009 AUSTRALIA - QUEENSLAND - Gladstone - Curtis Island - Drilling operations*Former Notice - 1380(T)/2009 is cancelled**Date - Until 28 February 2010*

Maritime Safety Queensland Notice 821(T)/2009 (AA444933)

The jack-up barge *Sideson 3* and MT *Wandana* and *Lorraine* are conducting drilling operations in the following positions:

23° 46'.87 S 151° 12'.29 E	23° 46'.89 S 151° 12'.25 E
23° 46'.94 S 151° 12'.22 E	23° 46'.98 S 151° 12'.17 E
23° 47'.00 S 151° 12'.15 E	23° 46'.95 S 151° 12'.05 E
23° 46'.97 S 151° 12'.08 E	23° 47'.01 S 151° 12'.10 E
23° 47'.03 S 151° 12'.13 E	23° 47'.04 S 151° 12'.15 E
23° 47'.04 S 151° 12'.20 E	23° 47'.06 S 151° 12'.23 E
23° 47'.47 S 151° 12'.75 E	23° 47'.51 S 151° 12'.73 E
23° 47'.55 S 151° 12'.70 E	23° 47'.51 S 151° 12'.79 E
23° 47'.55 S 151° 12'.80 E	23° 47'.55 S 151° 12'.77 E
23° 47'.57 S 151° 12'.80 E	23° 47'.58 S 151° 12'.76 E
23° 47'.61 S 151° 12'.79 E	23° 47'.60 S 151° 12'.81 E
23° 47'.63 S 151° 12'.83 E	23° 47'.66 S 151° 12'.85 E
23° 47'.71 S 151° 12'.88 E	23° 47'.44 S 151° 12'.76 E
23° 47'.57 S 151° 12'.70 E	23° 47'.47 S 151° 12'.80 E
23° 47'.60 S 151° 12'.75 E	23° 47'.54 S 151° 12'.82 E
23° 47'.58 S 151° 12'.75 E	23° 47'.59 S 151° 12'.83 E
23° 47'.62 S 151° 12'.78 E	23° 47'.62 S 151° 12'.86 E
23° 47'.65 S 151° 12'.76 E	23° 47'.62 S 151° 12'.88 E
23° 47'.68 S 151° 12'.84 E	23° 47'.47 S 151° 12'.74 E
23° 47'.73 S 151° 12'.89 E	23° 47'.55 S 151° 12'.75 E
	23° 47'.66 S 151° 12'.82 E.

All vessels will display appropriate shapes and lights and will monitor VHF Ch 13 and Ch 16.

Mariners are advised to navigate with caution in the area.

Chart temporarily affected - Aus 245 - AU5244X5

1448(T)/2009 AUSTRALIA - QUEENSLAND - Gladstone - Scientific instruments*Date - Until 1 March 2010*

Maritime Safety Queensland Notice 819(T)/2009 (AA444934)

Special light buoys exist in the following positions:

23° 33'.73 S 151° 01'.18 E	23° 43'.12 S 151° 08'.27 E
23° 44'.69 S 151° 09'.68 E	23° 42'.30 S 151° 08'.26 E
23° 40'.89 S 151° 07'.61 E	23° 39'.28 S 151° 05'.64 E
23° 37'.00 S 151° 02'.64 E	23° 43'.99 S 151° 09'.26 E
23° 43'.08 S 151° 08'.78 E	23° 44'.38 S 151° 10'.78 E
23° 47'.48 S 151° 10'.73 E	23° 47'.26 S 151° 12'.00 E
23° 46'.02 S 151° 09'.54 E	23° 45'.89 S 151° 10'.80 E
23° 46'.64 S 151° 09'.30 E	23° 46'.83 S 151° 11'.13 E
23° 46'.35 S 151° 10'.95 E	23° 45'.48 S 151° 10'.63 E
23° 45'.07 S 151° 10'.31 E	23° 47'.17 S 151° 11'.54 E
23° 47'.60 S 151° 12'.52 E	23° 47'.74 S 151° 13'.01 E
23° 48'.09 S 151° 11'.12 E	23° 48'.46 S 151° 10'.25 E
23° 49'.18 S 151° 13'.28 E	23° 49'.15 S 151° 14'.30 E
23° 48'.68 S 151° 13'.60 E	23° 48'.51 S 151° 12'.95 E
23° 49'.98 S 151° 15'.68 E	23° 50'.65 S 151° 20'.65 E
23° 47'.81 S 151° 13'.61 E	23° 46'.67 S 151° 15'.76 E
23° 48'.63 S 151° 15'.42 E	23° 48'.27 S 151° 17'.72 E
23° 46'.99 S 151° 18'.40 E	23° 49'.54 S 151° 18'.42 E
23° 47'.86 S 151° 14'.12 E	23° 47'.72 S 151° 16'.53 E
23° 48'.09 S 151° 19'.15 E	23° 51'.29 S 151° 19'.17 E
23° 52'.58 S 151° 19'.79 E	23° 51'.18 S 151° 17'.93 E
23° 51'.06 S 151° 17'.21 E	23° 51'.58 S 151° 18'.15 E
23° 57'.67 S 151° 23'.26 E	23° 55'.19 S 151° 21'.57 E
23° 56'.78 S 151° 21'.43 E	23° 45'.18 S 151° 18'.96 E
23° 52'.89 S 151° 22'.65 E	23° 57'.42 S 151° 29'.05 E
24° 00'.83 S 151° 30'.55 E	23° 59'.77 S 151° 27'.70 E

1448(T)/2009 AUSTRALIA - QUEENSLAND - Gladstone - Scientific instruments (continued)

Pink poly-floats exist in the following positions:

23° 44'.41 S 151° 11'.35 E	23° 44'.20 S 151° 11'.87 E
23° 43'.95 S 151° 12'.42 E	23° 43'.79 S 151° 13'.02 E
23° 43'.47 S 151° 13'.54 E	23° 48'.58 S 151° 10'.13 E
23° 48'.64 S 151° 10'.00 E	23° 48'.48 S 151° 09'.97 E
23° 48'.47 S 151° 09'.79 E	23° 48'.54 S 151° 09'.81 E
23° 48'.63 S 151° 09'.86 E	23° 48'.75 S 151° 09'.82 E
23° 48'.78 S 151° 09'.76 E	23° 49'.15 S 151° 12'.16 E
23° 49'.22 S 151° 12'.69 E	23° 48'.82 S 151° 11'.97 E
23° 51'.33 S 151° 10'.68 E	23° 50'.96 S 151° 11'.12 E
23° 50'.35 S 151° 11'.92 E	23° 49'.56 S 151° 13'.05 E
23° 49'.96 S 151° 13'.23 E	23° 50'.40 S 151° 13'.04 E
23° 50'.69 S 151° 12'.63 E	23° 51'.13 S 151° 12'.53 E
23° 51'.79 S 151° 11'.93 E	23° 51'.58 S 151° 12'.29 E
23° 52'.17 S 151° 11'.29 E	23° 53'.40 S 151° 11'.38 E
23° 54'.10 S 151° 11'.02 E	23° 52'.73 S 151° 11'.72 E
23° 50'.89 S 151° 14'.07 E	23° 50'.61 S 151° 14'.42 E
23° 51'.12 S 151° 14'.47 E	23° 50'.92 S 151° 13'.48 E
23° 51'.39 S 151° 14'.20 E	23° 51'.60 S 151° 13'.89 E
23° 50'.12 S 151° 15'.11 E	23° 50'.28 S 151° 14'.99 E
23° 50'.13 S 151° 14'.65 E	23° 50'.37 S 151° 14'.34 E
23° 50'.54 S 151° 13'.99 E	23° 50'.91 S 151° 13'.89 E
23° 49'.96 S 151° 14'.95 E	23° 49'.80 S 151° 14'.87 E
23° 49'.63 S 151° 14'.68 E	23° 52'.82 S 151° 18'.89 E
23° 52'.87 S 151° 19'.00 E	23° 52'.62 S 151° 19'.33 E
23° 54'.70 S 151° 18'.14 E	23° 52'.71 S 151° 18'.68 E
23° 53'.23 S 151° 18'.83 E	23° 53'.68 S 151° 18'.65 E
23° 54'.00 S 151° 18'.31 E	23° 53'.93 S 151° 18'.69 E
23° 53'.90 S 151° 18'.93 E	23° 52'.21 S 151° 18'.20 E
23° 51'.89 S 151° 18'.19 E	23° 53'.52 S 151° 18'.10 E
23° 53'.99 S 151° 18'.10 E	23° 54'.34 S 151° 18'.26 E
23° 52'.54 S 151° 18'.22 E	23° 53'.01 S 151° 18'.17 E
23° 53'.06 S 151° 17'.67 E	23° 52'.88 S 151° 17'.58 E
23° 52'.63 S 151° 17'.56 E	23° 53'.37 S 151° 17'.78 E
23° 53'.52 S 151° 17'.57 E	23° 53'.72 S 151° 17'.59 E
23° 53'.94 S 151° 17'.18 E	23° 53'.13 S 151° 17'.96 E
23° 55'.11 S 151° 17'.97 E	23° 55'.52 S 151° 17'.67 E
23° 55'.94 S 151° 17'.57 E	23° 56'.38 S 151° 17'.78 E
23° 56'.45 S 151° 18'.10 E	23° 56'.99 S 151° 18'.73 E
23° 57'.24 S 151° 18'.79 E	23° 57'.14 S 151° 18'.97 E
23° 56'.71 S 151° 18'.12 E	23° 56'.89 S 151° 18'.31 E
23° 57'.11 S 151° 18'.55 E	23° 56'.94 S 151° 19'.53 E
23° 57'.03 S 151° 20'.06 E	23° 57'.48 S 151° 20'.32 E
23° 57'.98 S 151° 20'.17 E	23° 53'.06 S 151° 19'.11 E
23° 53'.23 S 151° 19'.20 E	23° 53'.44 S 151° 19'.19 E
23° 53'.65 S 151° 19'.24 E	23° 53'.85 S 151° 19'.27 E
23° 54'.04 S 151° 19'.40 E	23° 54'.22 S 151° 19'.54 E
23° 54'.36 S 151° 19'.65 E	23° 54'.49 S 151° 19'.80 E
23° 54'.62 S 151° 19'.88 E	23° 54'.54 S 151° 19'.93 E
23° 54'.70 S 151° 19'.99 E	23° 57'.23 S 151° 21'.61 E
23° 57'.50 S 151° 21'.10 E	23° 58'.52 S 151° 20'.10 E
23° 58'.23 S 151° 20'.76 E	23° 58'.68 S 151° 19'.39 E
23° 58'.96 S 151° 19'.11 E	24° 00'.25 S 151° 25'.50 E
23° 59'.97 S 151° 25'.39 E	23° 59'.94 S 151° 25'.06 E
24° 00'.41 S 151° 25'.18 E	24° 00'.21 S 151° 24'.90 E
24° 00'.16 S 151° 24'.57 E	24° 02'.23 S 151° 27'.90 E
24° 02'.44 S 151° 28'.14 E	24° 02'.65 S 151° 28'.33 E
24° 02'.85 S 151° 28'.55 E	24° 03'.20 S 151° 28'.51 E
24° 03'.54 S 151° 28'.68 E	

Chart temporarily affected - Aus 244 - Aus 245 - Aus 246 - Aus 247 - AU424151 - AU5244X5

1449(T)/2009 AUSTRALIA - QUEENSLAND - Percy Isles - Middle Island - Scientific instrument*Date* - Until 31 March 2010

Maritime Safety Queensland Notice 811(T)/2009 (AA443483)

A special light beacon, *Fl.Y.3s*, exists in position 21° 39'.19 S 150° 14'.62 E.**Chart temporarily affected - Aus 822 - Aus 823 - AX 0822E - AX 0823E - AU322150****1450(T)/2009 AUSTRALIA - QUEENSLAND - Hay Point to Bailey Islet - Scientific instruments***Former Notice* - 1191(T)/2009 is cancelled

Maritime Safety Queensland Notices 704(T)/2009, 827(T)/2009 (AA435310, AA445125)

Special light buoys, *Fl(5)Y.20s*, exist in positions:

21° 16'.32 S 149° 18'.70 E

21° 05'.29 S 149° 33'.12 E.

Mariners are not to use these buoys as moorings.

Chart temporarily affected - Aus 249 - Aus 250 - Aus 823 - Aus 824 - AX 0249E - AX 0823E - AU422149 - AU5250P2**1451(T)/2009 AUSTRALIA - QUEENSLAND - Shute Bay - Obstructions**

Maritime Safety Queensland Notice 800(T)/2009 (AA443468)

Obstructions exist in positions 20° 17'.52 S 148° 46'.90 E and 20° 17'.50 S 148° 46'.90 E.

Mariners are advised to navigate with caution in the area.

Chart temporarily affected - Aus 252 - Aus 253 - AU421148**1452(T)/2009 AUSTRALIA - QUEENSLAND - Townsville - Ross River - Dredging operations completed***Former Notice* - 1024(T)/2009 is cancelled

Maritime Safety Queensland Notice 573(T)/2009 (AA424851)

Cancel this notice on receipt.

Chart formerly affected - Aus 256 - Aus 257 - AU5XX257**1453(T)/2009 AUSTRALIA - QUEENSLAND - Townsville - Ross River - Dredging operations***Date* - Until 31 January 2010

Maritime Safety Queensland Notice 814(T)/2009 (AA443313)

The dredge *Percy* is conducting dredging operations in the vicinity of position 19° 16'.56 S 146° 49'.81 E.

The dredge will display appropriate lights and shapes and will monitor VHF Ch 12 and Ch 16.

Mariners are advised to navigate with caution in the area.

Chart temporarily affected - Aus 257 - AU5XX257**1454(T)/2009 AUSTRALIA - QUEENSLAND - Cairns - Dredging operations completed***Former Notice* - 1289(T)/2009 is cancelled

Maritime Safety Queensland Notice 718(T)/2009 (AA436361)

Cancel this notice on receipt.

Chart formerly affected - Aus 263 - AU5262X4

1455(T)/2009 AUSTRALIA - QUEENSLAND - Cooktown - Shoaling removed

Former Notice - 878(T)/2006 is cancelled
Maritime Safety Queensland Notice 833/2009 (AA445522)

Cancel this notice on receipt.

Chart formerly affected - Aus 270

1456(T)/2009 PAPUA NEW GUINEA - Cape Blackwood - Seismic survey southwards

Former Notice - 1325(T)/2009 is cancelled
National Maritime Safety Authority PNG Notice 64/2009 (AA438768)

Cancel this notice on receipt.

Chart formerly affected - Aus 378 - Aus 502 - Aus 4620 (INT 620) - Aus 4622 (INT 622) – AX 4620F - AU210140 - AU309144

1457(T)/2009 AUSTRALIA - QUEENSLAND - Karumba - Norman River - Wreck

Maritime Safety Queensland Notice 830(T)/2009 (AA445524)

A stranded wreck marked by an isolated danger light, VQ(2).4s, exists in position 17° 28'.71 S 140° 50'.34 E.

Chart temporarily affected - Aus 6

1458(T)/2009 INDIAN OCEAN - Sumatera - Scientific instruments westwards

Former Notice - 568(T)/2009 is cancelled
JAMSTEC (AA443477)

Scientific instruments, Triton buoys, exist as follows:

<i>Number</i>	<i>Position</i>
17	4° 56'.91 S 94° 58'.35 E
18	1° 39'.59 S 89° 59'.69 E
19	7° 59'.97 S 95° 02'.60 E

Chart temporarily affected - Aus 4070 (INT 70) - Aus 4071 (INT 71)

1459(T)/2009 AUSTRALIA - WESTERN AUSTRALIA - Browse Island - Scientific instruments

Date - Until 30 November 2010
MetOcean Engineers (AA444797)

Scientific instruments exist as follows:

<i>Position</i>	<i>Remarks</i>
13° 44'.69 S 123° 20'.98 E	lit buoy, Fl(5)Y.20s
13° 44'.41 S 123° 22'.30 E	lit buoy, Fl(5)Y.20s
13° 44'.59 S 123° 21'.40 E	subsurface

Chart temporarily affected - Aus 319 – AX 0319F - AU314123

1460(T)/2009 AUSTRALIA - WESTERN AUSTRALIA - Browse Island - Scientific instrument

Former Notice - 99(T)/2009 is cancelled
Date - Until 30 November 2010
MetOcean Engineers (AA444797)

A subsurface scientific instrument exists in position 13° 52'.49 S 123° 13'.78 E.

Chart temporarily affected - Aus 319 - Aus 320 – AX 0319F - AU314123

1461(T)/2009 AUSTRALIA - WESTERN AUSTRALIA - Maret Islands - Scientific instruments recovered

Former Notice - 102(T)/2009 is cancelled
MetOcean Engineers (AA444797)

Cancel this notice on receipt.

Chart formerly affected - Aus 319 - Aus 320 - Aus 729 – AX 0319F - AU314123

1462(T)/2009 AUSTRALIA - WESTERN AUSTRALIA - Scott Reef to James Price Point - Scientific instruments

Date - Until 31 December 2010
Fugro Survey Pty Ltd (AA445251 - AA445256)

Scientific instruments exist as follows:

<i>Position</i>	<i>Remarks</i>
14° 56'.49 S 121° 45'.08 E	subsurface
14° 56'.64 S 121° 44'.94 E	subsurface
14° 59'.99 S 121° 46'.90 E	subsurface
15° 00'.14 S 121° 46'.78 E	subsurface
15° 03'.22 S 121° 47'.78 E	subsurface
15° 03'.43 S 121° 47'.52 E	lit buoy
15° 03'.68 S 121° 47'.68 E	subsurface
15° 06'.01 S 121° 45'.45 E	subsurface
15° 06'.07 S 121° 45'.44 E	lit buoy
15° 16'.32 S 121° 39'.64 E	lit buoy
15° 25'.75 S 121° 34'.57 E	lit buoy
15° 37'.38 S 121° 33'.86 E	lit buoy
15° 54'.51 S 121° 32'.71 E	lit buoy
16° 02'.60 S 121° 36'.95 E	lit buoy
16° 13'.24 S 121° 38'.81 E	lit buoy
16° 21'.49 S 121° 40'.77 E	lit buoy
16° 21'.55 S 121° 40'.59 E	lit buoy
16° 40'.16 S 121° 44'.88 E	lit buoy
16° 47'.64 S 121° 44'.63 E	lit buoy
17° 08'.58 S 121° 37'.58 E	lit buoy
17° 23'.81 S 121° 48'.39 E	lit buoy
17° 29'.40 S 122° 04'.66 E	lit buoy
17° 29'.45 S 121° 55'.32 E	lit buoy
17° 30'.26 S 122° 05'.84 E	lit buoy
17° 31'.03 S 121° 51'.55 E	lit buoy
17° 31'.19 S 122° 07'.52 E	lit buoy
17° 31'.20 S 122° 08'.53 E	lit buoy
17° 31'.26 S 122° 07'.45 E	lit buoy
17° 31'.26 S 122° 07'.59 E	lit buoy
17° 31'.75 S 122° 07'.51 E	lit buoy

Chart temporarily affected - Aus 322 - Aus 323 - Aus 324 - Aus 415 – AX 0322F – AX 0415F - AU315121 - AU318121

1463(T)/2009 AUSTRALIA - WESTERN AUSTRALIA - Dampier - Mermaid Sound - AIS and racon non operational

Dampier Port Authority Notice 36/2009 (AA445621)

The light buoy, Q(4)Y.6s (20° 25'.45 S 116° 42'.95 E (WGS84 datum)), AIS and racon are non operational.

Chart temporarily affected - Aus 57 - Aus 58 - Aus 741 - AU5XXX58

1464(T)/2009 AUSTRALIA - WESTERN AUSTRALIA - Bessieres Island - FPSO off station northwestwards

BHP Billiton Petroleum Pty Ltd (AA445247)

The FPSO Griffin Venture (21° 13'.25 S 114° 38'.90 E (WGS84 datum)) is off station.

Chart temporarily affected - Aus 328 - Aus 415 - Aus 416 - Aus 744 - Aus 4708 (INT 708) – AX 0415F – AX 4708F - AU130090 - AU422114

1465(T)/2009 AUSTRALIA - SOUTH AUSTRALIA - Margaret Brock Reef - Sufficiently promulgated

Former Notice - 452(P)/2002 is cancelled
 Australian Maritime Safety Authority (AA445581)

Cancel this notice on receipt.

Chart formerly affected - Aus 127**1466(T)/2009 AUSTRALIA - BASS STRAIT - Drilling operations**

Former Notice - 850(T)/2009 is cancelled
 Date - Until 31 January 2010
 Origin Energy CSG Ltd (AA417748, AA445117)

The drill rig *Kan Tan IV* will be conducting drilling operations at well *Rockhopper-1* (39° 37'.50 S 145° 26'.35 E).

Mariners are advised to navigate with caution in the area.

Chart temporarily affected - Aus 487 - AU340145**1467(T)/2009 AUSTRALIA - VICTORIA - Barwon River - Lights trial**

Former Notice - 1036(T)/2007 is cancelled
 Victorian Notice 139(T)/2007 (AA295030)

Trial leading lights, 317°, exist as follows:

Position (WGS84 datum)	Remarks
38° 16'. 97 S 144° 29'. 97 E	Front <i>Fl.4s</i>
38° 16'. 95 S 144° 29'. 94 E	Rear <i>F.Bu</i>

Mariners are advised to navigate with caution in the area.

Chart temporarily affected - Aus 143 - AU439144**1468(T)/2009 AUSTRALIA - VICTORIA - Barwon River - Bridge construction; exclusion zones; light buoys established**

Former Notice - 1205(T)/2009 is cancelled
 Date - Until 30 November 2010
 Victorian Notice 133(T)/2009 (AA431931)

An exclusion zone exists around bridge construction works at the entrance to Barwon River.

An exclusion zone, marked by special buoys, exists in an area bounded by the following positions:

38° 16'.94 S 144° 29'.68 E
 38° 16'.92 S 144° 29'.87 E
 38° 16'.97 S 144° 29'.85 E
 38° 16'.98 S 144° 29'.67 E.

Lateral light buoys have been established to mark the permitted transit lane through the exclusion zone. Construction work requirements will from time to time require the short term closure of the transit lane. Advice will be provided when the closures are to occur on Coast Radio Melbourne VHF Ch 67 at 0848 and 1448.

Vessels entering the river from Bass Strait may be able to berth at the Barwon Heads main jetty (38° 17'.06 S 144° 29'.76 E) while the transit lane is closed. Vessels looking to access Bass Strait from the river will need to anchor or beach nearby to wait for the transit lane to be opened. No berthing is allowed at any time at the jetty (38° 16'.75 S 144° 29'.77 E).

Mariners are advised to navigate with caution in the area.

Chart temporarily affected - Aus 143 - Aus 788 - AU439144

1469(T)/2009 AUSTRALIA - VICTORIA - Port Phillip - Port Melbourne - River Yarra - Harbour works*Former Notice* - 1212(T)/2008 is cancelled

Date - Until 30 January 2010

Victorian Notice 173(T)/2009 (AA444962)

Harbour works and diving operations associated with the rehabilitation of the wharf face are in progress (37° 49'.23 S 144° 55'.77 E).

A safety floating boom exists between 25 South Wharf (37° 49'.24 S 144° 55'.86 E) and 26 South Wharf (37° 49'.22 S 144° 55'.68 E).

Further information can be obtained from Melbourne VTS on VHF Ch 12.

Mariners are advised to navigate with caution in the area.

Chart temporarily affected - Aus 154 - AU5XX154**1470(T)/2009 AUSTRALIA - BASS STRAIT - Drilling operations**

Date - Until 31 May 2010

Esso Australia Pty Ltd (AA445557, AA445558)

The jack-up barge *Ocean Patriot* is conducting drilling operations in the following positions:

38° 07'.22 S 148° 23'.16 E
 38° 09'.68 S 148° 12'.97 E
 38° 10'.85 S 148° 35'.62 E
 38° 10'.85 S 148° 35'.63 E
 38° 10'.86 S 148° 35'.59 E
 38° 10'.87 S 148° 35'.59 E
 38° 19'.20 S 148° 06'.17 E.

A 500m safety zone exists at each location.

Chart temporarily affected - Aus 357A - Aus 487 - AU439148**1471(T)/2009 PACIFIC OCEAN - Scientific instruments***Former Notice* - 941(T)/2008 is cancelled

JAMSTEC (AA443477)

Scientific instruments, Triton buoys, exist as follows:

<i>Number</i>	<i>Position</i>
4	0° 00'.97 N 156° 02'.44 E
5	2° 01'.00 S 155° 57'.50 E
6	5° 01'.73 S 156° 01'.44 E
9	0° 03'.59 N 147° 00'.64 E

Chart temporarily affected - Aus 399 - Aus 4622 (INT 622) - AU306156

HYDROGRAPHIC REPORTS

<i>Locality</i>	<i>Report</i>	<i>Ship/Authority</i>	<i>Observer</i>
WA- Dampier	Mooring buoy	<i>MV Mermaid Provider</i>	
PNG- Seeadler Harbour Madang China Strait	Jetty Wharf Anchorage	<i>HMAS Wewak</i>	
SOLOMON ISLANDS- Honiara	Wreck Wharf	<i>HMAS Gascoyne</i>	

NAVIGATION WARNINGS

The following radio messages have been received during the period to 18 December 2009. Signal copies of these messages may be destroyed. It is recommended that the reprint of Navigational Warnings should be kept in a file or a book divided into areas. Cancellation should be made on receipt of signals and reprints.

Rigs on location other than those listed in the latest Section III summary are the subject of Radio Navigational Warnings. Rigs in transit will not be the subject of Warnings.

AUSCOAST WARNING

- 290 Special purpose vessel *Aquila Explorer* conducting seismic survey towing 4.5M cable in area bounded by 34° 20' 0 S to 35° 40' 0 S and 118° 00' 0 E to 122° 00' 0 E. 7M clearance requested.
- 291 Cancelled.
- 292 Cancelled.
- 293 Drill rig *Ocean Epoch* in position 21° 31' 80 S 114° 05' 08 E. 2.5M clearance requested.
- 294 Cancelled.
- 295 Drill rig *Songa Venus* in position 13° 41' 53 S 124° 29' 40 E. 2.5M clearance requested.
- 296 Cancelled.
- 297 Special purpose vessel *Rockwater 2* conducting underwater operations in area bounded by 38° 37' 43 S to 38° 47' 39 S and 142° 36' 08 E to 142° 42' 25 E. 0.5M clearance requested.
- 298 Special purpose vessel *Veritas Voyager* conducting seismic survey towing 3M cables in area bounded by 17° 45' 0 S to 19° 45' 0 S and 112° 30' 0 E to 114° 30' 0 E. 5M clearance requested.
- 299 Drill rig *Stena Clyde* in position 21° 19' 57 S 114° 03' 20 E. 2.5M clearance requested.
- 300 Cancelled.
- 301 Cancelled.
- 302 Cancelled.

NAVAREA X WARNINGS

- 020 Cancelled.

Navigational warnings in force as at 180001UTC DEC 09.**Auscoast**

128 191 231 239 246 255 269 280 283 287 289 290 293 295 297 298 299

Navarea X

Nil.

Summary of mobile drilling rigs as at 180001UTC DEC 09.

<i>Name</i>	<i>Position</i>
Kan Tan IV	39° 47' 34 S 145° 26' 21 E
Ocean Shield	11° 05' 90 S 127° 03' 70 E
Songa Venus	13° 41' 53 S 124° 29' 40 E
Transocean Legend	13° 40' 07 S 122° 16' 32 E
Ensco 7500	19° 41' 60 S 113° 55' 10 E
Atwood Eagle	19° 54' 48 S 115° 07' 55 E
Songa Mercur	19° 55' 70 S 115° 14' 90 E
Jack Bates	20° 13' 30 S 113° 41' 36 E
Stena Clyde	21° 19' 57 S 114° 03' 20 E
Ocean Epoch	21° 31' 80 S 114° 05' 08 E

NAVAREA XIV WARNINGS

- 068 Cancelled.
- 069 Cancelled.
- 070 Cancelled.
- 071 Cancelled.
- 072 Southern Ocean Macquarie Island. Numerous icebergs reported between Macquarie Island and Campbell Island. Mariners should navigate with extreme caution south of latitude 50° 00' 0 S.

Navarea XIV warnings in force as at 180001UTC DEC 09.

059 066 072

To accompany Australian Notice to Mariners 1418/2009

OMISSIONS FROM CHART

Certain information has been omitted from this chart. For details see the larger scale nautical charts and relevant nautical publications.

Note for chart Aus 518.

To accompany Australian Notice to Mariners 1427/2009

SEA LEVEL

Due to meteorological and other non-harmonic effects, the sea level in the area covered by this chart may fall 0.2 metres below the level predicted.

Note for chart Aus 74.

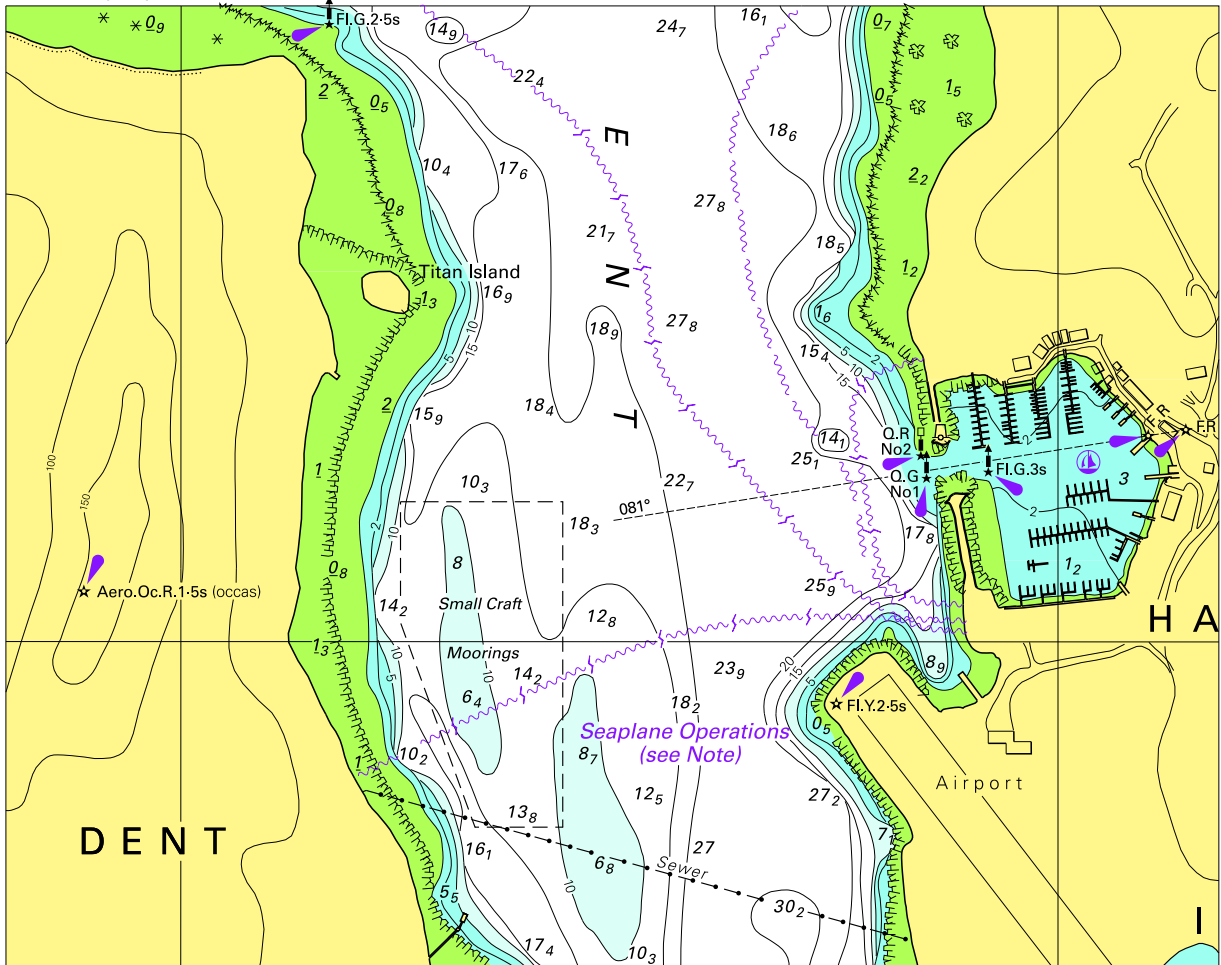
To accompany Australian Notice to Mariners 1428/2009

OMISSIONS FROM CHART

Certain information has been omitted from this chart. For details see the larger scale nautical charts and relevant nautical publications.

Note for chart Aus 449.

To accompany Australian Notice to Mariners 1415/2009

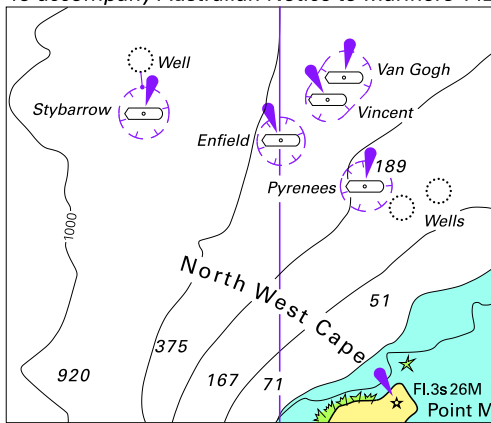


Block for chart Aus 254

© Commonwealth of Australia 2009

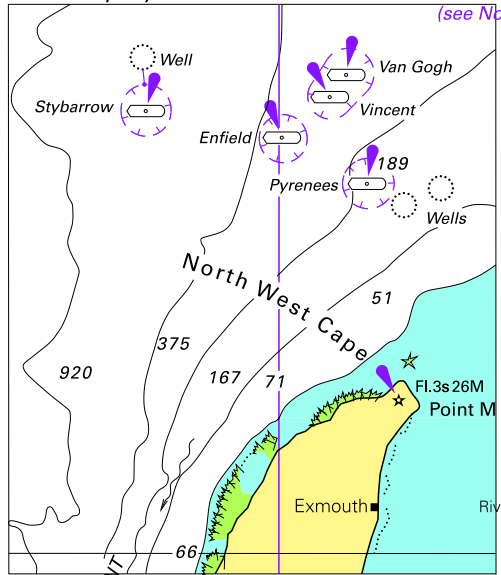
(160.4 x 127.1mm)

To accompany Australian Notice to Mariners 1426/2009



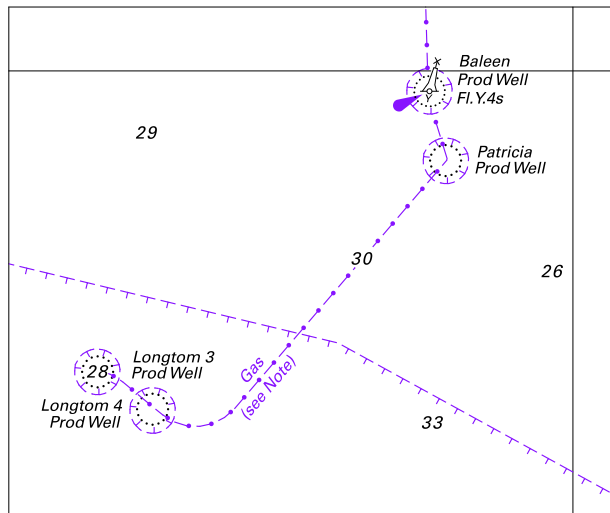
© Commonwealth of Australia 2009
Block for chart Aus 415 (64.5 x 55.0mm)

To accompany Australian Notice to Mariners 1426/2009



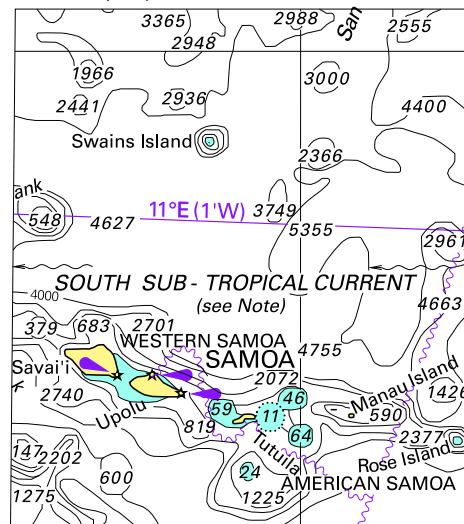
© Commonwealth of Australia 2009
Block for chart Aus 416 (64.5 x 75.3mm)

To accompany Australian Notice to Mariners 1436/2009



© Commonwealth of Australia 2009
Block for chart Aus 357A (80.7 x 67.3mm)

To accompany Australian Notice to Mariners 1437/2009



© Commonwealth of Australia 2009
Block for chart Aus 4060 (60.9 x 68.5mm)