



4 December 2009

Edition 24

Australian Notices to Mariners are the authority for correcting Australian Charts and Publications

AUSTRALIAN NOTICES TO MARINERS

Notices 1347 – 1408 



The Hydrographer and Staff of the Australian Hydrographic Service wish all users of Australian Navigational Products a Merry Christmas, a Happy New Year and safe, successful voyages in 2010.



Published fortnightly by the Australian Hydrographic Service

Commodore R. NAIRN RAN
Hydrographer of Australia

SECTIONS.

- I. **Australian Notices to Mariners, including blocks and notes.**
- II. **Hydrographic Reports.**
- III. **Navigational Warnings.**

SUPPLEMENTS.

- I. **Tracings**
- II. **Cumulative List of Australian Notices to Mariners.**
- III. **Temporary and Preliminary Notices in force.**
- IV. **Amendments to Admiralty List of Lights and Fog Signals (Vol K), Radio Signals (NP 281(2), 282, 283(2), 285, 286(4)) and Sailing Directions (NP 9, 13, 14, 15, 33, 34, 35, 36, 39, 44, 51, 60, 61, 62, 100, 136).**

© Commonwealth of Australia 2009

This work is copyright. Apart from any use permitted under the Copyright Act 1968, no part may be reproduced by any process, adapted, communicated or commercially exploited without prior written permission from The Commonwealth represented by the Australian Hydrographic Service.

IMPORTANT NOTICE

This edition of Notices to Mariners includes all significant information affecting AHS products which the AHS has become aware of since the last edition. All reasonable efforts have been made to ensure the accuracy and completeness of the information, including third party information, on which these updates are based. The AHS regards third parties from which it receives information as reliable, however the AHS cannot verify all such information and errors may therefore exist. The AHS does not accept liability for errors in third party information.

GENERAL INSTRUCTIONS

The substance of these notices should be inserted on the charts affected.

Bearings are referred to the true compass and are reckoned clockwise from North; those relating to lights are given as seen by an observer from seaward. Positions quoted in permanent notices relate to the horizontal datum for the chart(s). When preliminary or temporary notices affect multiple charts, positions will be provided in relation to only one horizontal datum and that datum will be specified. When the multiple charts do not have a common horizontal datum, mariners will be required to adjust the position(s) for those charts not on the specified datum. The range quoted for a light is its nominal range. Depths are with reference to the chart datum of each chart. Heights are above mean high water springs or mean higher high water, as appropriate.

The capital letter (P) or (T) after the number of any notice denotes a preliminary or temporary notice respectively, which are contained separately at the end of the permanent notices. A star (*) adjacent to the number of a notice indicates that the notice is based on original information.

REPORTING OF DANGERS

Mariners are particularly requested to notify the AUSTRALIAN HYDROGRAPHIC SERVICE, Locked Bag 8801 Wollongong, NSW 2500 (Fax 02-4223 6599, e-mail Hydro.NTM@defence.gov.au or, alternatively by filling in and submitting the [Hydrographic Notes](#) forms located on the web site – www.hydro.gov.au), immediately on the discovery of new dangers or suspected dangers to navigation. For changes or defects in aids to navigation notify AusSAR (Fax 02-6230 6868 or email rccaus@amsa.gov.au).

AUTHORISED USE

Copies of Australian notices are available free of charge from the Australian Hydrographic Service (AHS) website (www.hydro.gov.au) and through the eNotices (email) service (www.hydro.gov.au/enotices/enotices.htm).

Individual Notices may be copied for the purpose of inserting Notice substance on official charts and publications. Paper copies may be printed by chart agents and distributed to customers on a cost recovery basis. Participating chart agents are listed on the AHS website as providing a 'Paper Notices to Mariners' service (www.hydro.gov.au/prodserv/distributors/distributors.htm). Copies of the notices may not be sold for profit without prior written agreement.

NUMERICAL INDEX OF NOTICES TO MARINERS

Edition No 24

Notices	Aus Chart, INT Chart, ENC Cell, AHP
1347.....	Aus 144, AU314127, 415128, 416128, 5X13P1, 5X14P1
1348.....	Amendment to Australian Notice to Mariners No 2
1349.....	Amendment to Australian National Tide Tables
1350.....	Aus 199
1351.....	Aus 204, 209, 216, 489, 809, 810, AX 0809E
1352.....	Aus 208
1353.....	Aus 238
1354.....	Aus 252, 824
1355.....	Aus 262, 830, AX 6027S, 63262
1356.....	Aus 262, 263, 830, AX 6027S, 63262
1357.....	Aus 835, 839
1358.....	Aus 4603, INT 603, AX 4603F
1359.....	Aus 386, 387, 548, 4060, 4603, 4604, 4622, INT 60, 603, 604, 622, AX 4603F, 4604F
1360.....	Aus 289
1361.....	Aus 55, 740, 741
1362.....	Aus 63, 743
1363.....	Aus 329
1364.....	Aus 328, 329, 744
1365.....	Aus 137, 138
1366.....	Aus 349
1367.....	Aus 164, 799
1368.....	Aus 143, 158, 788
1369.....	Aus 158
1370.....	Aus 143, 158
1371.....	Aus 155
1372.....	Aus 154, 155
1373(T).....	Aus 197, 808, 809, AX 0808E, 0809E, 63200, AU434151
1374(T).....	Aus 222, 812, AU5XX222
1375(T).....	Aus 238, AU5237X8
1376(T).....	Aus 238, AU5237X8
1377(T).....	Aus 238, AU5237X8
1378(T).....	Aus 236
1379(T).....	Aus 235
1380(T).....	Aus 245, AU5244X5
1381(T).....	Aus 244, 245, 246, AU425151, 5244X5
1382(T).....	Aus 244, 245, 819, AU425151,
1383(T).....	Aus 248, 260, 261, 367, 822, AX 0260E, 0367E, 0822E, 60260, 67261, AU423150, 5261P2
1384(T).....	Aus 260, 367, 820, 822, AX 0260E, 0367E, 0820E, 0822E, 60260, AU423150
1385(T).....	Aus 251, 824, AU421149
1386(T).....	Aus 826, 827, AU320147
1387(T).....	Aus 262, 830, AX 6027S, 63262, AU417145, 5262X4
1388(T).....	Aus 289, AU411141
1389(T).....	Aus 289, 296, 301, 376, 700, AU411141
1390(T).....	Aus 701
1391(T).....	Aus 26, 28, 722, AX 72026, 72722, AU413130, 5XXX24
1392(T).....	Aus 328, 329, 744, AU422114
1393(T).....	Aus 112, 113, 114, 117, AX 63112, 70117, AU5111X4, 5XX113
1394(T).....	Aus 120
1395(T).....	Aus 122
1396(T).....	Aus 343, 345, AX 0343E
1397(T).....	Aus 134, 343, 345, 444, 776, AX 0343E, 0776E
1398(T).....	Aus 136, 778
1399(T).....	Aus 778
1400(T).....	Aus 345, 780
1401(T).....	Aus 349
1402(T).....	Aus 767
1403(T).....	Aus 163, AU5163P1
1404(T).....	Aus 143,144, 154, 155, 158, AU438144, 439144, 5XX154
1405(T).....	Aus 143, 157, AU439144
1406(T).....	Aus 154, AU5XX154
1407(T).....	Aus 143, 155, AU439145
1408(T).....	Aus 143, 144, 158, AU5143P5

NUMERICAL INDEX OF CHARTS AFFECTED

Edition No 24

Aus Chart	Notices	Aus Chart	Notices
Aus 26.....	1391(T)	Aus 489	1351
Aus 28.....	1391(T)	Aus 548	1359
Aus 55.....	1361	Aus 700	1389(T)
Aus 63.....	1362	Aus 701	1390(T)
Aus 112.....	1393(T)	Aus 722	1391(T)
Aus 113.....	1393(T)	Aus 740	1361
Aus 114.....	1393(T)	Aus 741	1361
Aus 117.....	1393(T)	Aus 743	1362
Aus 120.....	1394(T)	Aus 744	1364, 1392(T)
Aus 122.....	1395(T)	Aus 767	1402(T)
Aus 134.....	1397(T)	Aus 776	1397(T)
Aus 136.....	1398(T)	Aus 778	1398(T), 1399(T)
Aus 137.....	1365	Aus 780	1400(T)
Aus 138.....	1365	Aus 788	1368
Aus 143.....	1368, 1370, 1404(T), 1405(T), 1407(T), 1408(T)	Aus 799	1367
Aus 144.....	1347, 1404(T), 1408(T)	Aus 808	1373(T)
Aus 154.....	1372, 1404(T), 1406(T)	Aus 809	1351, 1373(T)
Aus 155.....	1371, 1372, 1404(T), 1407(T)	Aus 810	1351
Aus 157.....	1405(T)	Aus 812	1374(T)
Aus 158.....	1368, 1369, 1370, 1404(T), 1408(T)	Aus 819	1382(T)
Aus 163.....	1403(T)	Aus 820	1384(T)
Aus 164.....	1367	Aus 822	1383(T), 1384(T)
Aus 197.....	1373(T)	Aus 824	1354, 1385(T)
Aus 199.....	1350	Aus 826	1386(T)
Aus 204.....	1351	Aus 827	1386(T)
Aus 208.....	1352	Aus 830	1355, 1356, 1387(T)
Aus 209.....	1351	Aus 835	1357
Aus 216.....	1351	Aus 839	1357
Aus 222.....	1374(T)	Aus 4060	1359
Aus 235.....	1379(T)	Aus 4603	1358, 1359
Aus 236.....	1378(T)	Aus 4604	1359
Aus 238.....	1353, 1375(T), 1376(T), 1377(T)	Aus 4622	1359
Aus 244.....	1381(T), 1382(T)	AX 0260E	1383(T), 1384(T)
Aus 245.....	1380(T), 1381(T), 1382(T)	AX 0343E	1396(T), 1397(T)
Aus 246.....	1381(T)	AX 0367E	1383(T), 1384(T)
Aus 248.....	1383(T)	AX 0776E	1397(T)
Aus 251.....	1385(T)	AX 0808E	1373(T)
Aus 252.....	1354	AX 0809E	1351, 1373(T)
Aus 260.....	1383(T), 1384(T)	AX 0820E	1384(T)
Aus 261.....	1383(T)	AX 0822E	1383(T), 1384(T)
Aus 262.....	1355, 1356, 1387(T)	AX 4603F.....	1358, 1359
Aus 263.....	1356	AX 4604F.....	1359
Aus 289.....	1360, 1388(T), 1389(T)	AX 60260.....	1383(T), 1384(T)
Aus 296.....	1389(T)	AX 6027S	1355, 1356, 1387(T)
Aus 301.....	1389(T)	AX 63112.....	1393(T)
Aus 328.....	1364, 1392(T)	AX 63200.....	1373(T)
Aus 329.....	1363, 1364, 1392(T)	AX 63262.....	1355, 1356, 1387(T)
Aus 343.....	1396(T), 1397(T)	AX 67261.....	1383(T)
Aus 345.....	1396(T), 1397(T), 1400(T)	AX 70117.....	1393(T)
Aus 349.....	1366, 1401(T)	AX 72026.....	1391(T)
Aus 367.....	1383(T), 1384(T)	AX 72722.....	1391(T)
Aus 376.....	1389(T)		
Aus 386.....	1359	INT Chart	Notices
Aus 387.....	1359	INT 60.....	1359
Aus 444.....	1397(T)	INT 603.....	1358, 1359
		INT 604.....	1359
		INT 622.....	1359

ENC Cell	Notices
AU314127	1347
AU320147	1386(T)
AU411141	1388(T), 1389(T)
AU413130	1391(T)
AU415128	1347
AU416128	1347
AU417145	1387(T)
AU421149	1385(T)
AU422114	1392(T)
AU423150	1383(T), 1384(T)
AU424151	1382(T)
AU425151	1381(T)
AU434151	1373(T)
AU438144	1404(T)
AU439144	1404(T), 1405(T)
AU439145	1407(T)
AU5111X4	1393(T)
AU5X13P1	1347
AU5X14P1	1347
AU5XXX24	1391(T)
AU5XX113	1393(T)
AU5143P5	1408(T)
AU5XX154	1404(T), 1406(T)
AU5163P1	1403(T)
AU5XX222	1374(T)
AU5237X8	1375(T), 1376(T), 1377(T)
AU5244X5	1380(T), 1381(T)
AU5261P2	1383(T)
AU5262X4	1387(T)

1347 AUSTRALIA - Product

Australian Hydrographic Service (AA441224, AA442391)

New Chart

<i>Chart</i>	<i>Published</i>	<i>Title and description of amendments</i>	<i>Scale</i>	<i>Index Chart</i>	<i>Price</i>
Aus 144	20/11/2009	Australia - South Coast - Victoria - The Rip 38° 15'. 88 S - 38° 20'.30 S 144° 34'.82 E - 144° 44'.40 E <i>New chart providing improved coverage of The Rip, incorporating the Port Phillip Channel Deepening Project.</i>	1:12 500	Aus 5001	\$35.00

New Electronic Navigation Chart (Seafarer ENC)

<i>Cell Name</i>	<i>Released</i>	<i>Title</i>
AU314127	December 2009	Western Australia - Cape Bernier to Glycosmis Bay
AU415128	December 2009	Western Australia - Approaches to Cambridge Gulf
AU416128	December 2009	Northern Territory - Cambridge Gulf to Wyndham
AU5X13P1	December 2009	Gulf of Carpentaria - Bing Bong
AU5X14P1	December 2009	Northern Territory - Milner Bay

For further details refer to the AHS website at www.hydro.gov.au for new edition and new chart stock arrival information.

When placing orders with a chart agent, mariners should advise whether their order pertains to the current edition or the new edition.

1348 AUSTRALIA - Product - Amendment to Australian Notice to Mariners No 2

Australian Hydrographic Service (AA439445)

Page 17

Amend Safe Navigation Inc details to read:

Safe Navigation Inc
236-240 Pine Avenue
Long Beach 90802
California

Telephone (1 562) 590 8744
Fax (1 562) 491 0073
Email sales@safenav.com
Website www.safenavigation.com

C, Ntm**1349 AUSTRALIA - Product - Amendment to Australian National Tide Tables**

Australian Hydrographic Service (AA440694)

ANTT 2009

Page xxxv

Amend Pt Phillip Hds To Chart Datum to AUS 144 NC 20 NOV 2009 0.0

Page 388

Amend LAGRANGE BAY To Chart Datum to 0.0

ANTT 2010

Page xxxvii

Amend Pt Phillip Hds To Chart Datum to AUS 144 NC 20 NOV 2009 0.0

Page 394

Amend LAGRANGE BAY To Chart Datum to 0.0

Note: These corrections will be included in the next cumulative patch release of Seafarer Tides.

1350* AUSTRALIA - NEW SOUTH WALES - Botany Bay - Kurnell - Mooring buoy established

NSW Maritime Notice SU0918 (AA438929)

Aus 199 [1209/2009]

Insert	lit mooring buoy, Iso. Y.2s	33° 59'.699 S	151° 12'.756 E
--------	-----------------------------	---------------	----------------

1351* AUSTRALIA - NEW SOUTH WALES - Bouddi Point to Cabbage Tree Island - Historic wrecks
 Australian Hydrographic Service (AA437846 - AA437850)

Aus 204 [1307/2009]

Insert stranded wreck, with magenta legend *Historic Wk*
 (see Note) 33° 31'.660 S 151° 23'.668 E

Delete wreck 33° 31'.68 S 151° 23'.63 E

Aus 209 [1213/2009]

Insert depth, 23m, enclosed by danger circle with magenta
 legend *Historic Wk* (see Note) 32° 40'.667 S 152° 14'.017 E
 accompanying note 32° 46'.1 S 152° 04'.5 E

Delete dangerous wreck 32° 40'.65 S 152° 14'.01 E

Aus 216 [1308/2009]

Insert stranded wreck, with magenta legend *Historic Wk*
 (see Note) 33° 31'.660 S 151° 23'.668 E
 accompanying note 33° 27'.04 S 151° 17'.90 E

Delete wreck 33° 31'.68 S 151° 23'.63 E

Aus 489 [1306/2009]

Substitute depth, 23m, enclosed by danger circle with magenta
 legend *Historic Wk* (see Note) for dangerous wreck 32° 40'.7 S 152° 14'.0 E

Delete depth, 20₁m 32° 39'.6 S 152° 13'.6 E

Aus 809 [1306/2009]

Substitute magenta legend, *Historic Wks* (see Note), for legend,
 Wks 33° 09'.29 S 151° 38'.19 E

depth, 23m, enclosed by danger circle with magenta
 legend *Historic Wk* (see Note) for dangerous wreck 32° 40'.7 S 152° 14'.0 E

Aus 809 (plan, Catherine Hill Bay)

Substitute magenta legend, *Historic Wk* (see Note), for legend,
 Wk 33° 09'.18 S 151° 37'.92 E

magenta legend, *Historic Wk* (see Note), for legend,
 Wk 33° 09'.45 S 151° 37'.96 E

magenta legend, *Historic Wk* (see Note), for legend,
 Wk 33° 09'.56 S 151° 38'.04 E

Aus 810 [691/2009]

Substitute depth, 23m, enclosed by danger circle with magenta
 legend *Historic Wk* (see Note) for dangerous wreck 32° 40'.7 S 152° 14'.0 E

AX 0809E [1306/2009]

Substitute magenta legend, *Historic Wks* (see Note), for legend,
 Wks 33° 09'.29 S 151° 38'.19 E

depth, 23m, enclosed by danger circle with magenta
 legend *Historic Wk* (see Note) for dangerous wreck 32° 40'.7 S 152° 14'.0 E

AX 0809E (plan, Catherine Hill Bay)

Substitute magenta legend, *Historic Wk* (see Note), for legend,
 Wk 33° 09'.18 S 151° 37'.92 E

magenta legend, *Historic Wk* (see Note), for legend,
 Wk 33° 09'.45 S 151° 37'.96 E

magenta legend, *Historic Wk* (see Note), for legend,
 Wk 33° 09'.56 S 151° 38'.04 E

1352* AUSTRALIA - NEW SOUTH WALES - Newcastle - Throsby Basin - Lights discontinued; light established
NSW Maritime (AA439546), Newcastle Port Corporation (AA364222, AA364223)

Aus 208 [1212/2009]

Move	light	32° 55'.22 S	151° 45'.71 E
	to	32° 55'.184 S	151° 45'.682 E
Delete	light	32° 55'.04 S	151° 45'.63 E
	light	32° 55'.03 S	151° 45'.66 E
	light	32° 55'.03 S	151° 45'.65 E
	light	32° 55'.03 S	151° 45'.63 E
	light	32° 55'.11 S	151° 45'.65 E

1353* AUSTRALIA - QUEENSLAND - Brisbane River - Eagle Farm Flats Reach - Infrastructure

Former Notice - 1322(T)/2009 is cancelled
Maritime Safety Queensland (AA439291)

Aus 238 [935/2009]

Insert	continuous line, between	27° 26'.238 S	153° 06'.697 E
		27° 26'.253 S	153° 06'.713 E

1354* AUSTRALIA - QUEENSLAND - Thomas Island - Rock

HMAS *Melville* (AA440275)

Aus 252 [1216/2009]

Substitute	rock awash enclosed by danger circle for depth, 1.5m and enclosing contour	20° 33'.24 S	149° 07'.16 E
------------	--	--------------	---------------

Aus 824 [1264/2009]

Substitute	rock awash enclosed by danger circle for depth, 1.5m and enclosing contour	20° 33'.2 S	149° 07'.2 E
------------	--	-------------	--------------

1355* AUSTRALIA - QUEENSLAND - Cairns - Pilot boarding place

Maritime Safety Queensland (AA438834)

Aus 262 [908/2007]

Move	pilot boarding place, centred on	16° 48'.5 S	145° 50'.7 E
	to	16° 48'.6 S	145° 50'.6 E

Aus 830 [862/2009]

Move	pilot boarding place, centred on	16° 48'.5 S	145° 50'.7 E
	to	16° 48'.6 S	145° 50'.6 E

AX 6027S [NE 9/9/2008]

Move	pilot boarding place, centred on	16° 48'.5 S	145° 50'.7 E
	to	16° 48'.6 S	145° 50'.6 E

AX 63262 [908/2007]

Move	pilot boarding place, centred on	16° 48'.5 S	145° 50'.7 E
	to	16° 48'.6 S	145° 50'.6 E

1356* AUSTRALIA - QUEENSLAND - Cairns - Bearing
Maritime Safety Queensland (AA439291, AA440263, AA440266)

Aus 262 [1355/2009]

Amend legend to *Dir 209.2°* 16° 48'.91 S 145° 50'.46 E

Aus 263 [43/2009]

Amend legend to *Dir 209.2°* 16° 53'.19 S 145° 47'.98 E
light to *Iso.4s WRG.18m 11M* 16° 55'.17 S 145° 46'.83 E
light to *Q (F Day (occas)) & Fl.Y.4s* 16° 54'.73 S 145° 47'.09 E

Aus 830 [1355/2009]

Amend legend to *Dir 209.2°* 16° 45'.9 S 145° 52'.1 E

AX 6027S [1355/2009]

Amend legend to *Dir 209.2°* 16° 45'.9 S 145° 52'.1 E

AX 63262 [1355/2009]

Amend legend to *Dir 209.2°* 16° 48'.91 S 145° 50'.46 E

1357* AUSTRALIA - QUEENSLAND - Saunders Islet to Sinclair Islet - Unsurveyed boundary; rocks
LADS Flight (DHDB 1058719)

Aus 835 [595/2009]

Insert unsurveyed boundary, between 11° 38'.31 S 143° 10'.86 E
11° 36'.15 S 143° 10'.21 E
unsurveyed boundary, between 11° 34'.41 S 143° 09'.69 E
11° 32'.02 S 143° 08'.98 E
unsurveyed boundary, between 11° 29'.82 S 143° 08'.32 E
11° 28'.83 S 143° 08'.03 E
unsurveyed boundary, between 11° 27'.71 S 143° 07'.69 E
11° 21'.89 S 143° 05'.95 E
11° 22'.20 S 143° 04'.29 E
11° 10'.41 S 143° 00'.82 E

Delete rock 11° 29'.3 S 143° 05'.0 E
rock 11° 28'.9 S 143° 05'.0 E
rock 11° 28'.6 S 143° 04'.8 E
danger line, between 11° 29'.4 S 143° 04'.9 E
11° 28'.6 S 143° 04'.6 E
unsurveyed boundary, between 11° 38'.3 S 143° 10'.9 E
11° 33'.9 S 143° 02'.4 E
unsurveyed boundary, between 11° 32'.3 S 143° 02'.2 E
11° 23'.7 S 143° 02'.4 E
unsurveyed boundary, between 11° 22'.7 S 143° 01'.7 E
11° 15'.0 S 143° 00'.1 E
unsurveyed boundary, between 11° 14'.1 S 142° 59'.6 E
11° 09'.9 S 142° 58'.4 E
danger line, centred on 11° 17'.2 S 143° 02'.2 E

Aus 839 [990/2009]

Insert unsurveyed boundary, between 11° 09'.88 S 143° 00'.67 E
11° 06'.51 S 142° 59'.73 E
unsurveyed boundary, between 11° 10'.41 S 143° 00'.82 E
11° 20'.82 S 143° 03'.90 E

Delete unsurveyed boundary, between 11° 20'.8 S 143° 01'.7 E
11° 15'.0 S 143° 00'.2 E
unsurveyed boundary, between 11° 14'.0 S 142° 59'.3 E
11° 06'.5 S 142° 59'.7 E
danger line, centred on 11° 17'.2 S 143° 02'.2 E

1358* AUSTRALIA - CORAL SEA - Eastern Fields - Depths
Geoscience Australia (DHDB 953461)

Aus 4603 (INT 603) [1306/2009]

Insert accompanying block 10° 00'.0 S 145° 45'.0 E

AX 4603F [1306/2009]

Insert accompanying block 10° 00'.0 S 145° 45'.0 E

1359* PAPUA NEW GUINEA - Long Island to Garove Island - Depths
Geoscience Australia (AA439504)

Aus 386 [1306/2009]

Insert depth, 63m, enclosed by contour with legend SD 4° 35'.11 S 149° 10'.89 E
depth, 1090m 4° 39'.46 S 149° 03'.64 E
depth, 1305m 4° 42'.41 S 148° 55'.06 E

Delete depth, 544m 4° 35'.5 S 149° 10'.8 E
depth, 1598m 4° 39'.2 S 149° 05'.2 E
depth, 1634m 4° 43'.7 S 148° 54'.7 E
depth, 622m 4° 34'.2 S 149° 10'.6 E

Aus 387 [1306/2009]

Insert depth, 283m, enclosed by contour 4° 51'.30 S 147° 46'.65 E

Substitute depth, 327m, for depth, 388m 5° 13'.0 S 146° 57'.6 E

Aus 548 [NC 26/10/2007]

Insert depth, 1494m 4° 51'.40 S 148° 51'.45 E

Delete depth, 1635m 4° 51'.2 S 148° 51'.5 E

Aus 4060 (INT 60) [1306/2009]

Substitute depth, 283m, enclosed by contour for depth, 1200m 4° 51'.0 S 147° 49'.0 E

Aus 4603 (INT 603) [1358/2009]

Insert depth, 283m, enclosed by contour 4° 51'.3 S 147° 46'.6 E

Delete depth, 1200m 4° 51'.0 S 147° 49'.0 E

Aus 4604 (INT 604) [1306/2009]

Insert depth, 283m, enclosed by contour 4° 51'.3 S 147° 46'.6 E

Delete depth, 1200m 4° 51'.0 S 147° 49'.0 E

Aus 4622 (INT 622) [1306/2009]

Insert depth, 63m, enclosed by contour 4° 35'.1 S 149° 10'.9 E
depth, 1409m, enclosed by contour 4° 35'.4 S 149° 52'.0 E
depth, 283m, enclosed by contour 4° 51'.3 S 147° 46'.6 E

Delete depth, 111m 4° 35'.0 S 149° 12'.0 E
depth, 1200m 4° 51'.0 S 147° 49'.0 E

AX 4603F [1358/2009]

Insert depth, 283m, enclosed by contour 4° 51'.3 S 147° 46'.6 E

Delete depth, 1200m 4° 51'.0 S 147° 49'.0 E

AX 4604F [1306/2009]

Insert depth, 283m, enclosed by contour 4° 51'.3 S 147° 46'.6 E

Delete depth, 1200m 4° 51'.0 S 147° 49'.0 E

1360* AUSTRALIA - TORRES STRAIT - Booby Island - Flagstaff removedHMAS *Leeuwin* (AA439449)**Aus 289** [823/2009]

Delete flagstaff 10° 36'.23 S 141° 54'.69 E

1361* AUSTRALIA - WESTERN AUSTRALIA - Port Walcott - Depths

Sinclair Knight Merz (DHDB 1234201)

Aus 55 [1101/2009]Insert depth, 12₆m, (a) 20° 28'.97 S 117° 14'.93 Edepth, 12₆m, (b) 20° 29'.42 S 117° 14'.57 Edepth, 14₉m, (c), and contour enclosing (a), (b) and

(c) 20° 29'.24 S 117° 15'.00 E

Delete depth, 16₄m 20° 29'.0 S 117° 15'.1 E**Aus 740** [1270/2009]Insert depth, 12₆m, (a) 20° 29'.50 S 117° 14'.49 Edepth, 12₆m, (b), and contour enclosing (a) and (b) 20° 29'.05 S 117° 14'.85 EDelete depth, 15₈m 20° 29'.5 S 117° 14'.3 E**Aus 741** [1101/2009]Insert depth, 12₆m, (a) 20° 29'.50 S 117° 14'.49 Edepth, 12₆m, (b), and contour enclosing (a) and (b) 20° 29'.05 S 117° 14'.85 EDelete depth, 15₈m 20° 29'.5 S 117° 14'.3 E**1362* AUSTRALIA - WESTERN AUSTRALIA - Mary Anne Island - Light altered***Former Notice - 1306(T)/2006 is cancelled*

Australian Maritime Safety Authority (AA439671)

Aus 63 [NE 30/1/2009]

Amend elevation to 7m 21° 15'.70 S 115° 27'.85 E

Aus 743 [1271/2009]

Amend elevation to 7m 21° 15'.7 S 115° 27'.9 E

1363* AUSTRALIA - WESTERN AUSTRALIA - Sunday Island - Depth

UKHO (AA439551)

Aus 329 [711/2009]Insert depth, 4₃fm, and extend contour W to enclose 21° 44'.79 S 114° 24'.31 E

Delete depth, 6fm 21° 44'.6 S 114° 24'.5 E

1364* AUSTRALIA - WESTERN AUSTRALIA - Muiron Islands - Oil field northwestwards*Former Notice - 915(T)/2009 is cancelled*

BHP Billiton Petroleum Pty Ltd (AA438414 - AA438416)

Aus 328 [1272/2009]

Insert accompanying block 21° 30'.0 S 114° 12'.0 E

Aus 329 [1363/2009]

Insert accompanying block 21° 30'.0 S 114° 15'.0 E

Aus 744 [1272/2009]

Insert accompanying block 21° 32'.0 S 114° 09'.0 E

1365* AUSTRALIA - SOUTH AUSTRALIA - Port Adelaide - Light beacon repositioned

Department for Transport, Energy and Infrastructure SA Notice 53/2009 (AA439566)

Aus 137 [1167/2009]Move light beacon to 34° 47'.32 S 138° 27'.65 E
34° 47'.329 S 138° 27'.671 EDelete depth, 6₈m 34° 47'.31 S 138° 27'.67 E**Aus 138 [535/2008]**Move light beacon to 34° 47'.32 S 138° 27'.65 E
34° 47'.329 S 138° 27'.671 EDelete depth, 6₈m 34° 47'.31 S 138° 27'.67 E**1366* AUSTRALIA - VICTORIA - Point Sturgess - Depth**

Australian Hydrographic Service (AA440621), Deakin University (DHDB 1077569)

Aus 349 [1274/2009]Insert depth, 2₂fm, enclosed by contour 38° 37'.72 S 142° 55'.25 E

1367* AUSTRALIA - TASMANIA - Ulverstone - Lights

Marine and Safety Tasmania Notice M163/2009 (AA439250, AA439253)

Aus 164 [1063/2009]

Insert	light, <i>Dir F.WRG.9M</i> , with sectors green 183.5° - 186.5° (3°) white 186.5° - 189.5° (3°) red 189.5° - 192.5° (3°)	41° 09'.155 S	146° 10'.041 E
Delete	light	41° 09'.16 S	146° 10'.04 E
	light	41° 09'.20 S	146° 10'.03 E
	dashed and continuous line with legend, emanating from light	41° 09'.20 S	146° 10'.03 E

Aus 164 (plan, Ulverstone)

Insert	light, <i>Dir F.WRG.7m 9M</i> , with sectors green 183.5° - 186.5° (3°) white 186.5° - 189.5° (3°) red 189.5° - 192.5° (3°)	41° 09'.155 S	146° 10'.041 E
Delete	light	41° 09'.16 S	146° 10'.04 E
	light	41° 09'.20 S	146° 10'.03 E
	dashed and continuous line with legend, emanating from light	41° 09'.20 S	146° 10'.03 E

Aus 799 [610/2009]

Insert	light, <i>Dir F.WRG</i>	41° 09'.16 S	146° 10'.04 E
Delete	light	41° 09'.1 S	146° 10'.0 E

1368* AUSTRALIA - VICTORIA - Port Phillip - The Rip - Chart limits

Former Notice - 351(T)/2005 is cancelled
Australian Hydrographic Service (AA439121)

Aus 143 [1318/2009]

Insert	magenta limits, with legend <i>Aus 144</i> in NE corner, between	38° 15'.88 S	144° 34'.82 E
		38° 15'.88 S	144° 44'.40 E
		38° 20'.30 S	144° 44'.40 E
		38° 20'.30 S	144° 34'.82 E
		38° 15'.88 S	144° 34'.82 E
Delete	magenta limits, with legend <i>Aus 144</i> , centred on	38° 19'.0 S	144° 37'.0 E

Aus 158 [1317/2009]

Insert	magenta limits, with legend <i>Aus 144</i> in NE corner, between	38° 15'.88 S	144° 36'.00 E
		38° 15'.88 S	144° 44'.40 E
		38° 20'.30 S	144° 44'.40 E
		38° 20'.30 S	144° 36'.00 E
Delete	magenta limits, with legend <i>Aus 144</i> , centred on	38° 19'.0 S	144° 40'.0 E

Aus 788 [1274/2009]

Delete	magenta limits, with legend <i>Aus 144</i> , centred on	38° 19'.0 S	144° 37'.0 E
--------	---	-------------	--------------

1369* AUSTRALIA - VICTORIA - Port Phillip - Point Nepean - ESSA limit

Australian Hydrographic Service (AA440558)

Aus 158 [1368/2009]

Insert	ESSA limit with legend <i>ESSA</i> (see Note), between	38° 19'.431 S	144° 38'.960 E
		38° 18'.765 S	144° 39'.981 E
Delete	ESSA limit with legend, between	38° 19'.43 S	144° 38'.96 E
		38° 19'.53 S	144° 39'.01 E
		38° 18'.77 S	144° 39'.98 E

1370* AUSTRALIA - VICTORIA - Port Phillip - South Channel - Light beacons altered; light beacon established; maintained depths; chart notes

Former Notice - 1144(P)/2009 is cancelled

Port of Melbourne Corporation (AA439556, AA437995), Victorian Notices 163/2009, 166/2009 (AA441176, AA441250)

Aus 143 [1368/2009]

Insert	topmark	38° 17'.71 S	144° 42'.51 E
	port lateral light beacon, <i>Fl(2)R.5s</i> , with topmark	38° 17'.98 S	144° 43'.84 E
	starboard lateral light beacon, <i>Fl(2)G.5s</i> , with topmark	38° 19'.50 S	144° 55'.48 E
Amend	maintained depth to <i>15.5m</i>	38° 18'.1 S	144° 43'.4 E
	maintained depth to <i>15.5m</i>	38° 20'.0 S	144° 54'.0 E
Substitute	accompanying note for PPHEC note	37° 55'.5 S	144° 35'.5 E
Delete	light beacon	38° 17'.9 S	144° 43'.8 E
	depth, 13 ₅ m	38° 19'.4 S	144° 55'.6 E
	note, SOUTH CHANNEL	38° 00'.0 S	144° 31'.0 E

Aus 158 [1369/2009]

Insert	port lateral light beacon, <i>Fl(2)R.5s No4</i> , with topmark	38° 17'.976 S	144° 43'.839 E
	port lateral light beacon, <i>Fl.R.3s No2</i> , with topmark	38° 17'.705 S	144° 42'.510 E
	starboard lateral light beacon, <i>Fl(2)G.5s No21</i> , with topmark	38° 19'.499 S	144° 55'.476 E
Amend	maintained depth to <i>15.5m</i>	38° 18'.10 S	144° 43'.35 E
	maintained depth to <i>15.5m</i>	38° 19'.93 S	144° 52'.82 E
Substitute	accompanying note for PPHEC note	38° 21'.8 S	144° 56'.4 E
Delete	light beacon	38° 18'.00 S	144° 43'.82 E
	light beacon	38° 17'.73 S	144° 42'.50 E
	note, SOUTH CHANNEL	38° 21'.7 S	144° 58'.0 E

1371* AUSTRALIA - VICTORIA - Port Phillip - Anchorages

Port of Melbourne Corporation (AA419623, AA419624, AA420322, AA420323)

Aus 155 [1318/2009]

Insert	anchor berth, desig A1, with 740m swinging circle	37° 53'.36 S	144° 54'.56 E
	anchor berth, desig A2, with 740m swinging circle	37° 54'.25 S	144° 54'.50 E
	anchor berth, desig A3, with 740m swinging circle	37° 55'.13 S	144° 54'.64 E
	anchor berth, desig S1, with 925m swinging circle	37° 58'.16 S	144° 54'.43 E
	anchor berth, desig S2, with 925m swinging circle	37° 57'.53 S	144° 53'.31 E
	anchor berth, desig S3, with 925m swinging circle	37° 56'.88 S	144° 52'.25 E
	anchor berth, desig S4, with 925m swinging circle	37° 56'.18 S	144° 50'.97 E
	anchor berth, desig S5, with 925m swinging circle	37° 57'.22 S	144° 50'.69 E
	anchor berth, desig S6, with 925m swinging circle	37° 58'.00 S	144° 52'.00 E
	anchor berth, desig S7, with 925m swinging circle	37° 58'.20 S	144° 50'.00 E
	anchor berth, desig S8, with 925m swinging circle	37° 59'.50 S	144° 50'.50 E
	anchor berth, desig S9, with 925m swinging circle	37° 59'.87 S	144° 48'.60 E
	anchor berth, desig S10, with 925m swinging circle	38° 01'.26 S	144° 49'.19 E
anchor berth, desig S11, with 925m swinging circle	38° 01'.58 S	144° 47'.32 E	
Delete	anchorage area with legend Inner Anchorage, between	37° 52'.94 S	144° 55'.27 E
		37° 52'.94 S	144° 53'.46 E
		37° 56'.51 S	144° 55'.06 E
	anchorage area with legend Outer Anchorage, between	37° 57'.19 S	144° 54'.94 E
		37° 55'.58 S	144° 52'.21 E
		37° 55'.57 S	144° 49'.83 E
		37° 58'.29 S	144° 49'.83 E
		37° 58'.28 S	144° 55'.06 E

1372* AUSTRALIA - VICTORIA - Port Melbourne - Maintained depths; light established

Victorian Notice 164/2009, 167/2009 (AA441174, AA441251)

Aus 154 [1275/2009]

Insert	dashed line, between	37° 50'.124 S	144° 53'.774 E
	accompanying block light, <i>Dir F.RG.23m</i> , with sectors green 053.2° - 056.2° (3°) red 056.2° - 059.2° (3°)	37° 50'.128 S	144° 53'.879 E
		37° 49'.4 S	144° 54'.5 E
			37° 51'.954 S
Amend	maintained depth to 15.5m	37° 52'.45 S	144° 55'.72 E
	maintained depth to 15.5m	37° 52'.06 S	144° 55'.41 E
	maintained depth to 14.6m	37° 51'.62 S	144° 55'.16 E
	maintained depth to 14.6m	37° 50'.96 S	144° 54'.65 E
	maintained depth to 15.5m	37° 51'.08 S	144° 54'.48 E
	maintained depth to 14.6m	37° 48'.75 S	144° 54'.84 E
	maintained depth to 14.6m	37° 51'.81 S	144° 55'.00 E
	maintained depth to 15.5m	37° 51'.75 S	144° 54'.97 E
Delete	dashed line, between	37° 52'.32 S	144° 55'.55 E
		37° 52'.10 S	144° 55'.55 E
Aus 155 [1371/2009]			
Amend	maintained depth to 15.5m	37° 53'.88 S	144° 55'.68 E
Delete	dashed line, between	37° 52'.32 S	144° 55'.55 E
		37° 52'.10 S	144° 55'.55 E

1373(T)/2009 AUSTRALIA - NEW SOUTH WALES - Cape Baily to Ben Buckler - Scientific instruments*Former Notice* - 887(T)/2009 is cancelled

Date - Until 30 June 2011

Sydney Institute of Marine Science (AA375220, AA420046)

Subsea moorings (25 metres below the surface) exist in positions (WGS84 datum) as follows:

33° 53'.76 S 151° 17'.30 E	33° 53'.99 S 151° 17'.30 E
33° 54'.23 S 151° 17'.72 E	33° 54'.51 S 151° 18'.14 E
33° 54'.76 S 151° 18'.56 E	33° 55'.02 S 151° 19'.01 E
33° 55'.28 S 151° 19'.45 E	33° 55'.54 S 151° 19'.89 E
33° 55'.80 S 151° 20'.31 E	33° 56'.06 S 151° 21'.17 E
33° 56'.32 S 151° 22'.61 E	33° 56'.60 S 151° 22'.06 E
33° 56'.85 S 151° 22'.50 E	33° 57'.12 S 151° 22'.95 E
33° 57'.40 S 151° 23'.39 E	33° 57'.91 S 151° 24'.25 E
33° 58'.65 S 151° 23'.84 E	33° 58'.20 S 151° 24'.64 E
33° 58'.49 S 151° 25'.08 E	33° 58'.77 S 151° 25'.57 E
33° 59'.08 S 151° 26'.06 E	33° 59'.33 S 151° 26'.47 E
34° 59'.97 S 151° 27'.33 E	34° 00'.21 S 151° 27'.85 E
34° 00'.48 S 151° 28'.27 E	34° 00'.77 S 151° 28'.74 E
34° 01'.33 S 151° 29'.16 E	34° 01'.31 S 151° 29'.63 E
34° 01'.59 S 151° 30'.08 E	

Chart temporarily affected - Aus 197 - Aus 808 - Aus 809 – AX 0808E – AX 0809E – AX 63200 - AU434151**1374(T)/2009 AUSTRALIA - NEW SOUTH WALES - Clarence River - Dredging operations completed***Former Notice* - 1320(T)/2009 is cancelled

NSW Maritime Notice NC0955/2009 (AA439502)

Cancel this notice on receipt.

Chart formerly affected - Aus 222 - Aus 812 - AU5XX222**1375(T)/2009 AUSTRALIA - QUEENSLAND - Brisbane River - Hamilton Reach to Town Reach - Drilling operations**

Date - Until 14 December 2009

Maritime Safety Queensland Notice 771(T)/2009 (AA441680)

The barge *V84* and support vessel *Arnhem* are conducting drilling operations in the vicinity of Hamilton Reach (27° 26'.40 S 153° 03'.80 E), Howard Smith Wharves (27° 27'.76 S 153° 02'.21 E) and Town Reach (27° 28'.53 S 153° 01'.91 E).

The barge will display appropriate shapes and lights and will monitor VHF Ch 12 and Ch 16.

Mariners are advised to navigate with caution in the area.

Chart temporarily affected - Aus 238 - AU5237X8**1376(T)/2009 AUSTRALIA - QUEENSLAND - Brisbane River - Humbug Reach - Norris Point - Harbour works**

Date - Until 22 January 2010

Maritime Safety Queensland Notice 785(T)/2009 (AA441675)

Harbour works are in progress in position 27° 28'.1 S 153° 03'.3 E.

Piling and supply barges are onsite and will display appropriate shapes and lights.

Mariners are advised to navigate with caution in the area.

Chart temporarily affected - Aus 238 - AU5237X8

1381(T)/2009 AUSTRALIA - QUEENSLAND - Gladstone - Light buoys recovered

Former Notice - 896(T)/2009 is cancelled
 Maritime Safety Queensland Notice 507(T)/2009 (AA420254)

Cancel this notice on receipt.

Chart formerly affected - Aus 244 - Aus 245 - Aus 246 - AU425151 - AU5244X5

1382(T)/2009 AUSTRALIA - QUEENSLAND - Gladstone - Scientific instruments recovered

Former Notice - 898(T)/2009 is cancelled
 Maritime Safety Queensland Notices 474(T)/2009, 475(T)/2009 (AA418906, AA418908)

Cancel this notice on receipt.

Chart formerly affected - Aus 244 - Aus 245 - Aus 819 - AU424151

1383(T)/2009 AUSTRALIA - QUEENSLAND - Shoalwater Bay - Live firing completed

Former Notice - 1241(T)/2009 is cancelled
 Maritime Safety Queensland Notice 690(T)/2009 (AA435331)

Cancel this notice on receipt.

Chart formerly affected - Aus 248 - Aus 260 - Aus 261 - Aus 367 - Aus 822 - AX 0260E - AX 0367E - AX 0822E - AX 60260 - AX 67261 - AU423150 - AU5261P2

1384(T)/2009 AUSTRALIA - QUEENSLAND - Dome Island - Wreck salvaged

Former Notice - 1284(T)/2009 is cancelled
 Maritime Safety Queensland Notice 777/2009 (AA441302)

Cancel this notice on receipt.

Chart formerly affected - Aus 260 - Aus 367 - Aus 820 - Aus 822 - AX 0260E - AX 0367E - AX 0820E - AX 0822E - AX 60260 - AU423150

1385(T)/2009 AUSTRALIA - QUEENSLAND - Wigton Island - Wreck

Maritime Safety Queensland Notice 783(T)/2009 (AA441672)

A wreck exists in position 20° 43'.92 S 149° 28'.23 E.

Mariners are advised to navigate with caution in the area.

Chart temporarily affected - Aus 251 - Aus 824 - AU421149

1386(T)/2009 AUSTRALIA - QUEENSLAND - Cape Bowling Green - Light buoy off station

Former Notice - 373(T)/2007 is cancelled
 Maritime Safety Queensland Notice 225(T)/2007 (AA238610)

The isolated danger light buoy (19° 18'.30 S 147° 37'.25 E) is off station.

Chart temporarily affected - Aus 826 - Aus 827 - AU320147

1387(T)/2009 AUSTRALIA - QUEENSLAND - Yorkeys Knob - Light buoy established

Maritime Safety Queensland Notice 770(T)/2009 (AA440181)

A starboard lateral light buoy, *Fl.G.3s*, exists in position 16° 48'.09 S 145° 42'.82 E.

Chart temporarily affected - Aus 262 - Aus 830 - AX 6027S - AX 63262 - AU417145 - AU5262X4

1388(T)/2009 AUSTRALIA - TORRES STRAIT - Varzin Passage - ENC cell updated for depth anomalies

Former Notice - 1138(T)/2009 is cancelled
Australian Hydrographic Service (AA441976)

Cancel this notice on receipt.

Chart formerly affected - Aus 289 - AU411141

1389(T)/2009 AUSTRALIA - TORRES STRAIT - Varzin Passage - Scientific instruments recovered

Former Notice - 1290(T)/2009 is cancelled
HMAS *Leeuwin* (AA442100)

Cancel this notice on receipt.

Chart formerly affected - Aus 289 - Aus 296 - Aus 301 - Aus 376 - Aus 700 - AU411141

1390(T)/2009 AUSTRALIA - QUEENSLAND - Port Musgrave - Scientific instruments recovered

Former Notice - 728(T)/2009 is cancelled
Maritime Safety Queensland Notice 791/2009 (AA442270)

Cancel this notice on receipt.

Chart formerly affected - Aus 701

1391(T)/2009 AUSTRALIA - NORTHERN TERRITORY - Darwin - Drilling operations completed

Former Notice - 1078(T)/2009 is cancelled
INPEX (AA428403)

Cancel this notice on receipt.

Chart formerly affected - Aus 26 - Aus 28 - Aus 722 - AX 72026 - AX 72722 - AU413130 - AU5XXX24

1392(T)/2009 AUSTRALIA - WESTERN AUSTRALIA - Muiron Islands - Light buoy established northwestwards

BHP Billiton Petroleum Pty Ltd (AA441619)

A special cylindrical light buoy, *Fl. Y. 5s*, exists in position 21° 31'.2 S 114° 09'.6 E (WGS84 datum).

Chart temporarily affected - Aus 328 - Aus 329 - Aus 744 - AU422114

1393(T)/2009 AUSTRALIA - WESTERN AUSTRALIA - Fremantle - Success Channel to Parmelia Channel - Nav aids altered
 Date - Until 31 January 2010
 Fremantle Ports Notice 12(T)/2009 (AA441825)

Nav aids have been altered as follows;

	<i>Position</i>	<i>Remarks</i>
No1	32° 03'.73 S 115° 41'.20 E	VQ.G
No2	32° 04'.26 S 115° 41'.31 E	Iso.G.2s
No3	32° 04'.64 S 115° 41'.40 E	Iso.G.2s
No4	32° 05'.01 S 115° 41'.49 E	Iso.G.2s
No5	32° 05'.40 S 115° 41'.58 E	Iso.G.2s
No6	32° 05'.76 S 115° 41'.66 E	Iso.G.2s
No7	32° 06'.12 S 115° 41'.73 E	VQ.G
No8	32° 06'.74 S 115° 41'.87 E	VQ.G
No9	32° 07'.12 S 115° 41'.97 E	Iso.G.2s
No10	32° 07'.46 S 115° 42'.04 E	Iso.G.2s
No11	32° 07'.79 S 115° 42'.12 E	Iso.G.2s
No12	32° 08'.16 S 115° 42'.19 E	VQ.G
A	32° 03'.71 S 115° 41'.30 E	VQ.R
B	32° 04'.25 S 115° 41'.42 E	Iso.R.2s
C	32° 04'.62 S 115° 41'.51 E	Iso.R.2s
D	32° 04'.99 S 115° 41'.59 E	Iso.R.2s
E	32° 05'.38 S 115° 41'.68 E	Iso.R.2s
F	32° 05'.74 S 115° 41'.76 E	Iso.R.2s
G	32° 06'.10 S 115° 41'.86 E	VQ.R
H	32° 06'.73 S 115° 42'.00 E	VQ.R
J	32° 07'.10 S 115° 42'.06 E	Iso.R.2s
K	32° 07'.42 S 115° 42'.14 E	Iso.R.2s
L	32° 07'.77 S 115° 42'.22 E	Iso.R.2s
M	32° 08'.14 S 115° 42'.32 E	VQ.R

Chart temporarily affected - Aus 112 - Aus 113 - Aus 114 - Aus 117 – AX 63112 – AX 70117 - AU5111X4 - AU5XX113

1394(T)/2009 AUSTRALIA - SOUTH AUSTRALIA - Thevenard - Light beacon restored

Former Notice - 1170(T)/2006 is cancelled

Department for Transport, Energy and Infrastructure SA (AA441350), Flinders Ports (AA441584)

Cancel this notice on receipt.

Chart formerly affected - Aus 120

1395(T)/2009 AUSTRALIA - SOUTH AUSTRALIA - Thevenard - Daphne Rock - Beacon restored

Former Notice - 917(T)/2009 is cancelled

Department for Transport, Energy and Infrastructure SA (AA441350)

Cancel this notice on receipt.

Chart formerly affected - Aus 122

1396(T)/2009 AUSTRALIA - SOUTH AUSTRALIA - North Neptunes - Scientific instruments

Date - Until 31 December 2010

South Australian Research and Development Institute (AA442608)

Subsurface scientific instruments exist in positions (WGS84 datum):

35° 13'.73 S 136° 04'.40 E

35° 13'.79 S 136° 04'.19 E

35° 13'.90 S 136° 04'.35 E

Chart temporarily affected - Aus 343 - Aus 345 – AX 0343E

1397(T)/2009 AUSTRALIA - SOUTH AUSTRALIA - Taylor Island - Light relit*Former Notice - 988(T)/2008 is cancelled*

Department for Transport, Energy and Infrastructure SA (AA441350)

Cancel this notice on receipt.

Chart formerly affected - Aus 134 - Aus 343 - Aus 345 - Aus 444 - Aus 776 – AX 0343E – AX 0776E**1398(T)/2009 AUSTRALIA - SOUTH AUSTRALIA - Port Bonython - Light buoy relit***Former Notice - 918(T)/2009 is cancelled*

Department for Transport, Energy and Infrastructure SA (AA441350)

Cancel this notice on receipt.

Chart formerly affected - Aus 136 - Aus 778**1399(T)/2009 AUSTRALIA - SOUTH AUSTRALIA - Mundoora Bay - Light beacon relit***Former Notice - 414(T)/2008 is cancelled*

Department for Transport, Energy and Infrastructure SA (AA441350)

Cancel this notice on receipt.

Chart formerly affected - Aus 778**1400(T)/2009 AUSTRALIA - SOUTH AUSTRALIA - Yankalilla Bay - Light buoy re-established***Former Notice - 832(T)/2008 is cancelled*

Department for Transport, Energy and Infrastructure SA (AA441350)

Cancel this notice on receipt.

Chart formerly affected - Aus 345 - Aus 780**1401(T)/2009 AUSTRALIA - VICTORIA - Warrnambool - Pipeline southeastwards**

Santos Ltd (AA442130)

Pipelay vessel *Seven Navica* and support vessel *Rockwater 2* are conducting pipe laying activities between the following positions (WGS84 datum):

38° 47'.23 S 142° 41'.88 E

38° 43'.00 S 142° 36'.72 E

38° 40'.81 S 142° 38'.42 E

38° 38'.18 S 142° 41'.15 E.

A 500m safety zone exists around the *Seven Navica*.**Chart temporarily affected - Aus 349****1402(T)/2009 AUSTRALIA - TASMANIA - Ansons Bay - Beacon restored***Former Notice - 112(T)/2009 is cancelled*

Marine and Safety Tasmania Notice M170/2009 (AA441753)

Cancel this notice on receipt.

Chart formerly affected - Aus 767

1403(T)/2009 AUSTRALIA - TASMANIA - Burnie - Lights altered
 Marine and Safety Tasmania Notice M171/2009 (AA441755)

The light, *Oc.5s 16m 6M* (41° 02'.91 S 145° 55'.01 E), has been altered to *F. 16m 6M* and light, *Fl.G.3s 16m 5M* (41° 03'.08 S 145° 55'.28 E), has been altered to *F.G 16m 6M*.

Chart temporarily affected - Aus 163 - AU5163P1

1404(T)/2009 AUSTRALIA - VICTORIA - Port Phillip - Restricted areas removed; harbour works completed; diving operations completed

Former Notices - 464(T)/2009,636(T)/2009,1145(T)/2009 are cancelled
 Victorian Notice 161/2009 (AA441173)

Cancel this notice on receipt.

Chart formerly affected - Aus 143 - Aus 144 - Aus 154 - Aus 155 - Aus 158 - AU438144 - AU439144 - AU5XX154

1405(T)/2009 AUSTRALIA - VICTORIA - Port Phillip - Point Richards - Harbour works

Date - Until 30 December 2009
 Victorian Notice 160/2009 (AA441626)

Harbour works associated with the construction of a rock groyne in position 38° 06'.47 S 144° 37'.90 E are in progress.

All hazards to navigation will be marked by flashing yellow lights.

Dredging operations are in progress for an access channel to the boat ramp. The dredge will be marked by flashing yellow lights and the dredge pipeline will be marked by light buoys.

Mariners are advised to navigate with caution in the area.

Chart temporarily affected - Aus 143 - Aus 157 - AU439144

1406(T)/2009 AUSTRALIA - VICTORIA - Port Phillip - Port Melbourne - Swanson Dock - Harbour works completed

Former Notice - 981(T)/2009 is cancelled
 Port of Melbourne Corporation (AA442007)

Cancel this notice on receipt.

Chart formerly affected - Aus 154 - AU5XX154

1407(T)/2009 AUSTRALIA - VICTORIA - Port Phillip - Mordialloc - Shoaling removed

Former Notice - 1299(T)/2009 is cancelled
 Victorian Notice 168/2009 (AA441627)

Cancel this notice on receipt.

Chart formerly affected - Aus 143 - Aus 155 - AU439145

1408(T)/2009 AUSTRALIA - VICTORIA - Port Phillip - Sorrento - Obstruction removed

Former Notice - 1345(T)/2009 is cancelled
 Victorian Notice 155/2009 (AA441683)

Cancel this notice on receipt.

Chart formerly affected - Aus 143 - Aus 144 - Aus 158 - AU5143P5

HYDROGRAPHIC REPORTS

<i>Locality</i>	<i>Report</i>	<i>Ship/Authority</i>	<i>Observer</i>
QLD- Spitfire Rock	Light beacon	HMAS <i>Melville</i>	

NAVIGATION WARNINGS

The following radio messages have been received during the period to 4 December 2009. Signal copies of these messages may be destroyed. It is recommended that the reprint of Navigational Warnings should be kept in a file or a book divided into areas. Cancellation should be made on receipt of signals and reprints.

Rigs on location other than those listed in the latest Section III summary are the subject of Radio Navigational Warnings. Rigs in transit will not be the subject of Warnings.

AUSCOAST WARNING

- 274 Cancelled.
 275 Cancelled.
 276 Cancelled.
 277 Cancelled.
 278 Special purpose vessel *Veritas Voyager* conducting seismic survey towing 5M cable in area bounded by 14° 20'·0 S to 16° 00'·0 S and 119° 20'·0 E to 121° 20'·0 E. 7M clearance requested.
 279 Special purpose vessel *Geo Atlantic* conducting seismic survey from 14° 58'·0 S 122° 16'·0 E to 15° 44'·0 S 121° 16'·0 E. 6M clearance requested.
 280 Temporary yellow buoy Fl.Y.5s established in position 21° 31'·2 S 114° 09'·6 E.
 281 Cancelled.
 282 Cancelled.
 283 Drill rig *Kan Tan IV* in position 39° 47'·34 S 145° 26'·21 E. 2·5M clearance requested.
 284 Drill rig *Stena Clyde* in position 21° 20'·18 S 114° 04'·04 E. 2·5M clearance requested.
 285 Cancelled.
 286 Drill rig *Ocean Epoch* in position 21° 30'·6 S 114° 03'·4 E. 2·5M clearance requested.
 287 Drill rig *Ensco 7500* in position 19° 41'·6 S 113° 55'·1 E. 2·5M clearance requested.
 288 Special purpose vessel *Beaufort Explorer* conducting seismic survey in area bounded by 12° 00'·0 S to 12° 57'·0 S and 127° 00'·0 E to 127° 53'·0 E. 5M clearance requested.
 289 Drill rig *Ocean Shield* in position 11° 05'·9 S 127° 03'·7 E. 2·5M clearance requested.

NAVAREA X WARNINGS

- 020 Cancelled.

Navigational warnings in force as at 040001UTC DEC 09.**Auscoast**

128 188 191 214 231 239 243 246 255 257 268 269 278 279 280 283 284 286 287 288 289

Navarea X

Nil.

Summary of mobile drilling rigs as at 040001UTC DEC 09.

<i>Name</i>	<i>Position</i>
Ocean Patriot	39° 20'·37 S 142° 44'·56 E
Kan Tan IV	39° 47'·34 S 145° 26'·21 E
Ocean Shield	11° 05'·90 S 127° 03'·70 E
Songa Venus	11° 37'·48 S 125° 01'·36 E
West Triton	12° 41'·34 S 124° 31'·83 E
Transocean Legend	13° 40'·07 S 122° 16'·32 E
Nan Hai 6	19° 35'·50 S 116° 26'·10 E
Atwood Eagle	19° 54'·48 S 115° 07'·55 E
Songa Mercur	19° 55'·70 S 115° 14'·90 E
Ensco 7500	19° 41'·60 S 113° 55'·10 E
Jack Bates	20° 13'·30 S 113° 41'·36 E
Stena Clyde	21° 20'·18 S 114° 04'·04 E
Ocean Epoch	21° 30'·60 S 114° 03'·40 E

NAVAREA XIV WARNINGS

061 Cancelled.
062 Cancelled.
063 Cancelled.
064 Cancelled.
065 Cancelled.
066 South Pacific Ocean Iles de la Societe. Cable laying operations in progress by vessel *Ile de Re* until 08 Jan 10 at Bora Bora, Raiatea, Huanhine, Moorea and Tahiti. Wide berth requested.
067 Cancelled.

Navarea XIV warnings in force as at 040001UTC DEC 09.

059 066

To accompany Australian Notice to Mariners 1351/2009

HISTORIC WRECK

The site of an historic wreck is protected from unauthorised interference. For details see Australian Seafarers Handbook AHP 20.

Note for chart Aus 209.

To accompany Australian Notice to Mariners 1351/2009

HISTORIC WRECK

The site of an historic wreck is protected from unauthorised interference. For details see Australian Seafarers Handbook AHP 20.

Note for chart Aus 216.

To accompany Australian Notice to Mariners 1370/2009

PORT PHILLIP HEADS ENTRANCE AND
SOUTH CHANNEL

Vessels planning to transit Port Phillip Heads must refer to Harbour Master's Directions and comply with general operating requirements in regard to under keel clearance. Additional allowance should be considered to compensate for vertical wave motion in prevailing swell conditions. For more information refer to Port of Melbourne Corporation "Operations Handbook" at www.portofmelbourne.com and Admiralty Sailing Directions NP14. Information on height of tide and swell can be obtained from Lonsdale VTS on VHF Ch 12.

Note for chart Aus 143.

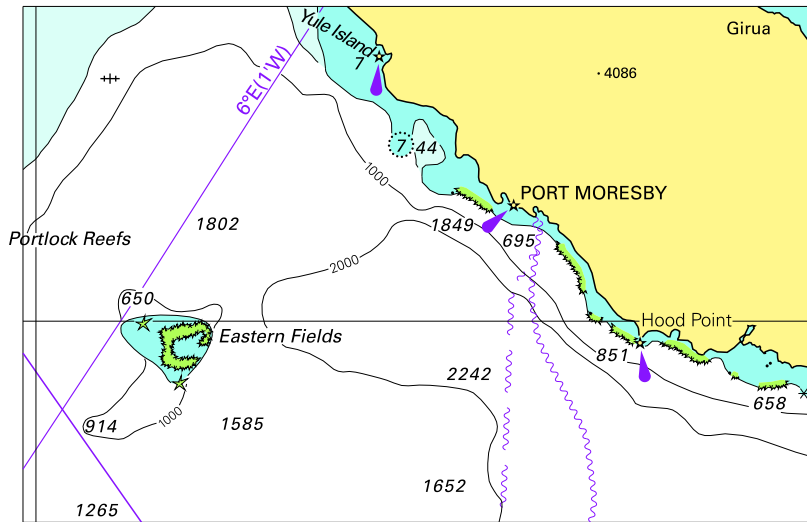
To accompany Australian Notice to Mariners 1370/2009

PORT PHILLIP HEADS ENTRANCE AND
SOUTH CHANNEL

Vessels planning to transit Port Phillip Heads must refer to Harbour Master's Directions and comply with general operating requirements in regard to under keel clearance. Additional allowance should be considered to compensate for vertical wave motion in prevailing swell conditions. For more information refer to Port of Melbourne Corporation "Operations Handbook" at www.portofmelbourne.com and Admiralty Sailing Directions NP14. Information on height of tide and swell can be obtained from Lonsdale VTS on VHF Ch 12.

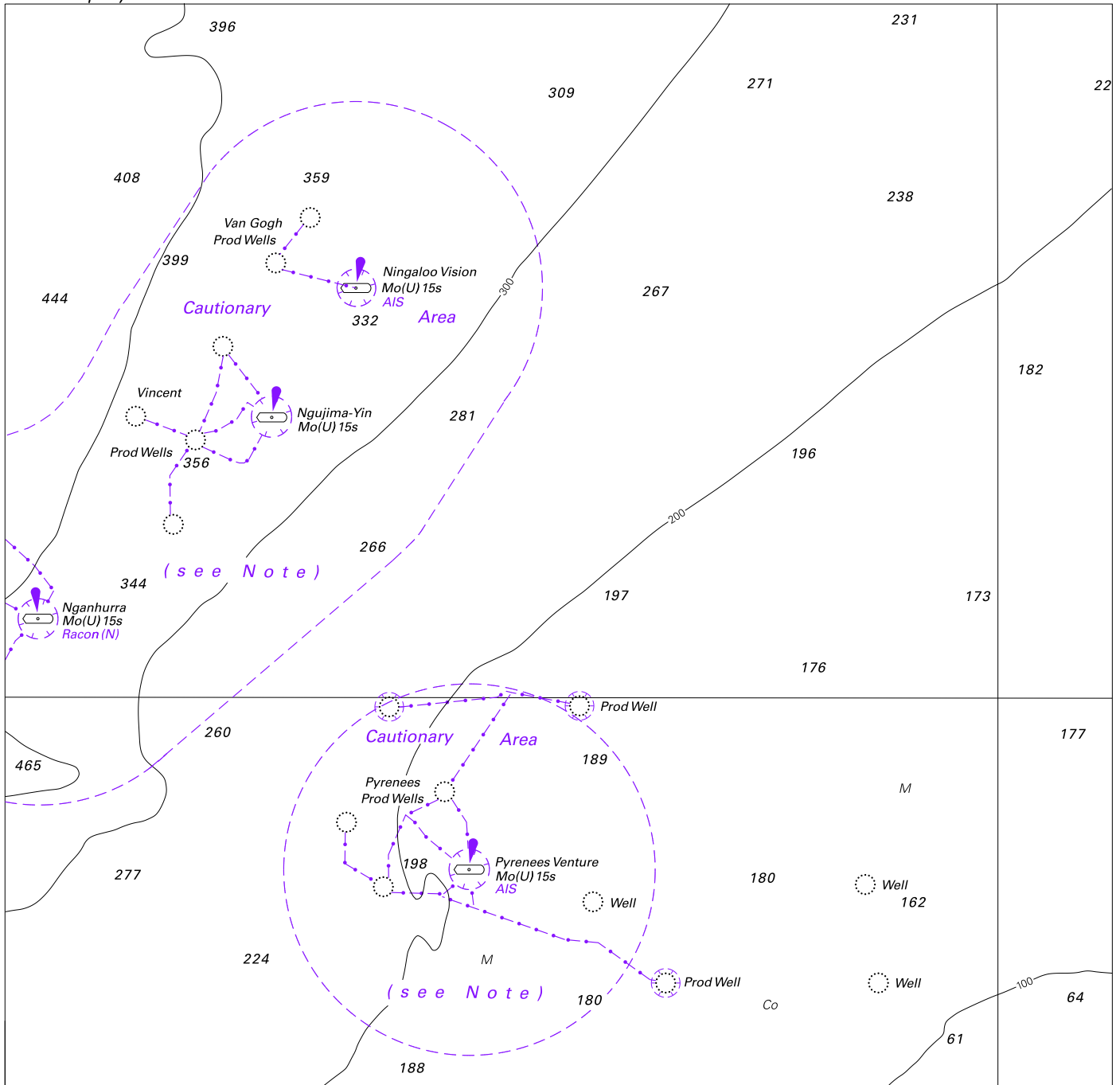
Note for chart Aus 158.

To accompany Australian Notice to Mariners 1358/2009



Block for chart Aus 4603 © Commonwealth of Australia 2009 (104.6 x 68.2mm)

To accompany Australian Notice to Mariners 1364/2009

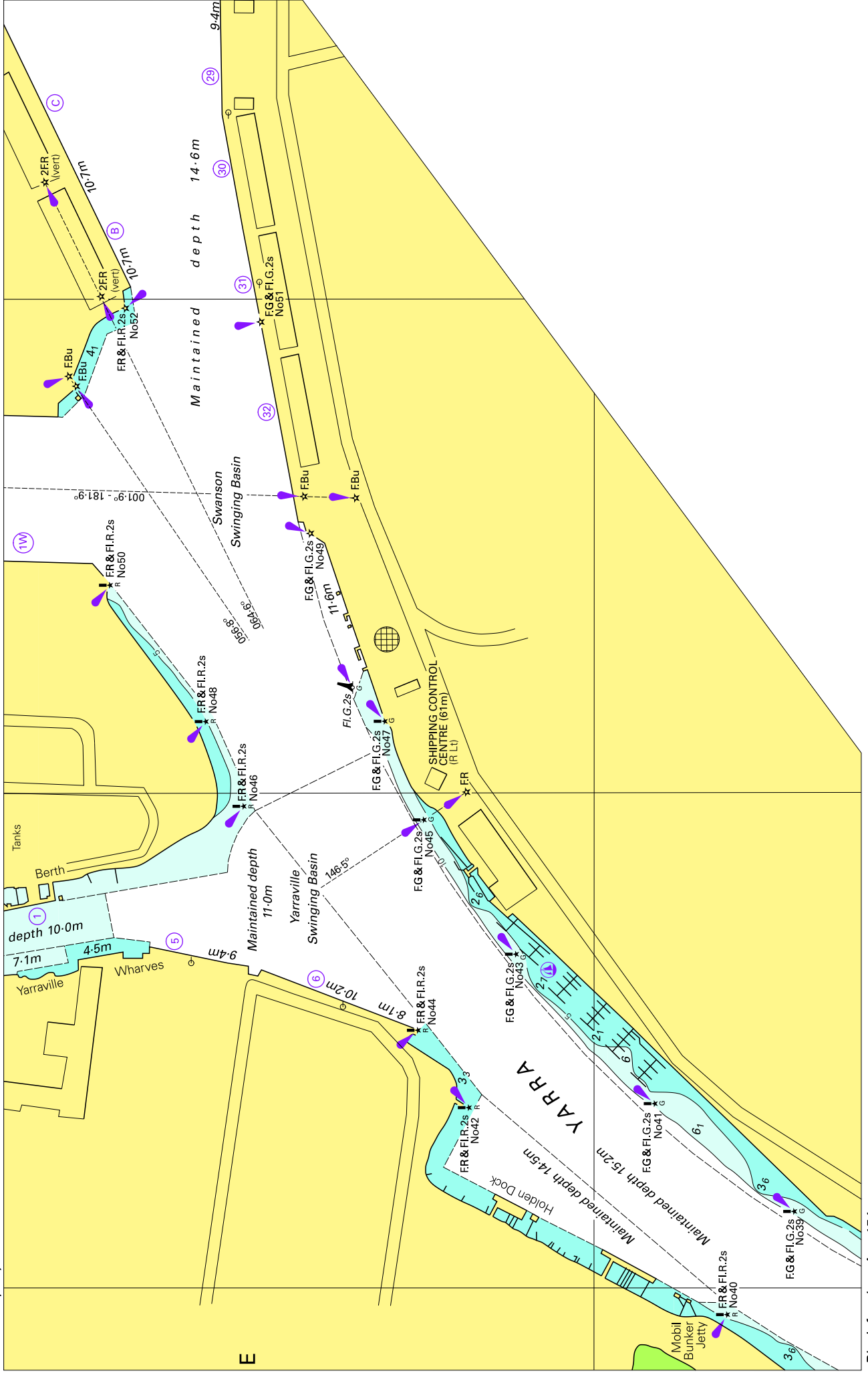


Block for chart Aus 744

© Commonwealth of Australia 2009

(184.0 x 180.3mm)

To accompany Australian Notice to Mariners 1372/2009



(271.1 x 169.7mm)

© Commonwealth of Australia 2009

Block for chart Aus 154