



20 November 2009

Edition 23

Australian Notices to Mariners are the authority for correcting Australian Charts and Publications

AUSTRALIAN NOTICES TO MARINERS

Notices 1304 – 1346 

Published fortnightly by the Australian Hydrographic Service

Commodore R. NAIRN RAN
Hydrographer of Australia

SECTIONS.

- I. **Australian Notices to Mariners, including blocks and notes.**
- II. **Hydrographic Reports.**
- III. **Navigational Warnings.**

SUPPLEMENTS.

- I. **Tracings**
- II. **Cumulative List of Australian Notices to Mariners.**
- III. **Temporary and Preliminary Notices in force.**
- IV. **Amendments to Admiralty List of Lights and Fog Signals (Vol K),
Radio Signals (NP 281(2), 282, 283(2), 285, 286(4)) and Sailing
Directions (NP 9, 13, 14, 15, 33, 34, 35, 36, 39, 44, 51, 60, 61, 62, 100, 136).**

© Commonwealth of Australia 2009

This work is copyright. Apart from any use permitted under the Copyright Act 1968, no part may be reproduced by any process, adapted, communicated or commercially exploited without prior written permission from The Commonwealth represented by the Australian Hydrographic Service.

IMPORTANT NOTICE

This edition of Notices to Mariners includes all significant information affecting AHS products which the AHS has become aware of since the last edition. All reasonable efforts have been made to ensure the accuracy and completeness of the information, including third party information, on which these updates are based. The AHS regards third parties from which it receives information as reliable, however the AHS cannot verify all such information and errors may therefore exist. The AHS does not accept liability for errors in third party information.

GENERAL INSTRUCTIONS

The substance of these notices should be inserted on the charts affected.

Bearings are referred to the true compass and are reckoned clockwise from North; those relating to lights are given as seen by an observer from seaward. Positions quoted in permanent notices relate to the horizontal datum for the chart(s). When preliminary or temporary notices affect multiple charts, positions will be provided in relation to only one horizontal datum and that datum will be specified. When the multiple charts do not have a common horizontal datum, mariners will be required to adjust the position(s) for those charts not on the specified datum. The range quoted for a light is its nominal range. Depths are with reference to the chart datum of each chart. Heights are above mean high water springs or mean higher high water, as appropriate.

The capital letter (P) or (T) after the number of any notice denotes a preliminary or temporary notice respectively, which are contained separately at the end of the permanent notices. A star (*) adjacent to the number of a notice indicates that the notice is based on original information.

REPORTING OF DANGERS

Mariners are particularly requested to notify the AUSTRALIAN HYDROGRAPHIC SERVICE, Locked Bag 8801 Wollongong, NSW 2500 (Fax 02-4223 6599, e-mail Hydro.NTM@defence.gov.au or, alternatively by filling in and submitting the [Hydrographic Notes](#) forms located on the web site – www.hydro.gov.au), immediately on the discovery of new dangers or suspected dangers to navigation. For changes or defects in aids to navigation notify AusSAR (Fax 02-6230 6868 or email rccaus@amsa.gov.au).

AUTHORISED USE

Copies of Australian notices are available free of charge from the Australian Hydrographic Service (AHS) website (www.hydro.gov.au) and through the eNotices (email) service (www.hydro.gov.au/enotices/enotices.htm).

Individual Notices may be copied for the purpose of inserting Notice substance on official charts and publications. Paper copies may be printed by chart agents and distributed to customers on a cost recovery basis. Participating chart agents are listed on the AHS website as providing a 'Paper Notices to Mariners' service (www.hydro.gov.au/prodserv/distributors/distributors.htm). Copies of the notices may not be sold for profit without prior written agreement.

NUMERICAL INDEX OF NOTICES TO MARINERS

Edition No 23

Notices	Aus Chart, INT Chart, ENC Cell, AHP
1304.....	Aus 49, 144, 320, AU429153, 430153, AHP 11, 114
1305.....	Amendment to Australian National Tide Tables 2010
1306.....	Aus 197, 364, 386, 387, 388, 391, 396, 423, 424, 426, 462, 489, 646, 809, 4060, 4601, 4602, 4603, 4604, 4621, 4622, INT 60, 601, 602, 603, 604, 621, 622, AX 0809E, 4603F, 4604F, 4621F
1307.....	Aus 204, 217
1308.....	Aus 216
1309.....	Aus 254
1310.....	Aus 318
1311.....	Aus 318, 726
1312.....	Aus 332, 333
1313.....	Aus 112, 113, 117, 334, 754, AX 0334E, 0754E, 63112, 66002, 70117
1314.....	Aus 169
1315.....	Aus 168
1316.....	Aus 163
1317.....	Aus 158
1318.....	Aus 143, 155
1319.....	Aus 4601, INT 601
1320(T).....	Aus 222, 812, AU5XX222
1321(T).....	Aus 237, 238, AU5237X8
1322(T).....	Aus 238, AU5237X8
1323(T).....	Aus 236
1324(T).....	Aus 248, 260, 261, 367, 820, 822, AX 0260E, 0367E, 0820E, 60260, 67248, 67261, 0822E, AU423150, 5261P2, 5XX248
1325(T).....	Aus 378, 502, 4620, 4622, INT 620, 622, AX 4620F, AU210140, 309144
1326(T).....	Aus 545, 554
1327(T).....	Aus 4, AU5XX4P1
1328(P).....	Aus 50, 51
1329(T).....	Aus 327, 415, 741, 4722, INT 722, AX 0415F, 4722F, AU130090
1330(P).....	Aus 57, 58, 59, 327, 328, 415, 416, 741, 742, AX 0415F, AU320115, 421115, 421116
1331(T).....	Aus 327, 328, 415, 416, AX 0415F, AU320114
1332(T).....	Aus 415, 4708, INT 708, AX 0415F, 4708F, AU130090
1333(T).....	Aus 64, 328, 743, 744, AU422114, 422115
1334(T).....	Aus 327, 328, 743, AU422115
1335(T).....	Aus 328, 329, 415, 416, 744, 4708, INT 708, AX 0415F, 4708F, AU130090, 422114
1336(T).....	Aus 334, 754, AX 0334E, 0754E, 66002, AU432115
1337(T).....	Aus 334, 754, AX 0334E, 0754E, 66002, AU432115
1338(T).....	Aus 112, 113, AU5XX113
1339(T).....	Aus 114
1340(T).....	Aus 118, 336, 337, 752, 759, 762, 4709, 4726, 4727, INT 709, 726, 727, AX 0118E, AU160090, 160120, 335120, 335121, 336119, 336120, 436118
1341(T).....	Aus 795, 796, AU444147
1342(T).....	Aus 168, AU5167X8
1343(T).....	Aus 143, 144, 158, AU439144
1344(T).....	Aus 154, 155, AU5XX154
1345(T).....	Aus 143, 144, 158, AU5143P5
1346(T).....	Aus 150, 801, AU439145

NUMERICAL INDEX OF CHARTS AFFECTED

Edition No 23

Aus Chart	Notices	Aus Chart	Notices
Aus 4.....	1327(T)	Aus 424	1306
Aus 49.....	1304	Aus 426	1306
Aus 50.....	1328(P)	Aus 462	1306
Aus 51.....	1328(P)	Aus 489	1306
Aus 57.....	1330(P)	Aus 502	1325(T)
Aus 58.....	1330(P)	Aus 545	1326(T)
Aus 59.....	1330(P)	Aus 554	1326(T)
Aus 64.....	1333(T)	Aus 646	1306
Aus 112.....	1313, 1338(T)	Aus 726	1311
Aus 113.....	1313, 1338(T)	Aus 741	1329(T), 1330(P)
Aus 114.....	1339(T)	Aus 742	1330(P)
Aus 117.....	1313	Aus 743	1333(T), 1334(T)
Aus 118.....	1340(T)	Aus 744	1333(T), 1335(T)
Aus 143.....	1318, 1343(T), 1345(T)	Aus 752	1340(T)
Aus 144.....	1304, 1343(T), 1345(T)	Aus 754	1313, 1336(T), 1337(T)
Aus 150.....	1346(T)	Aus 759	1340(T)
Aus 154.....	1344(T)	Aus 762	1340(T)
Aus 155.....	1318, 1344(T)	Aus 795	1341(T)
Aus 158.....	1317, 1343(T), 1345(T)	Aus 796	1341(T)
Aus 163.....	1316	Aus 801	1346(T)
Aus 168.....	1315, 1342(T)	Aus 809	1306
Aus 169.....	1314	Aus 812	1320(T)
Aus 197.....	1306	Aus 820	1324(T)
Aus 204.....	1307	Aus 822	1324(T)
Aus 216.....	1308	Aus 4060	1306
Aus 217.....	1307	Aus 4601	1306, 1319
Aus 222.....	1320(T)	Aus 4602	1306
Aus 236.....	1323(T)	Aus 4603	1306
Aus 237.....	1321(T)	Aus 4604	1306
Aus 238.....	1321(T), 1322(T)	Aus 4620	1325(T)
Aus 248.....	1324(T)	Aus 4621	1306
Aus 254.....	1309	Aus 4622	1306, 1325(T)
Aus 260.....	1324(T)	Aus 4708	1332(T), 1335(T)
Aus 261.....	1324(T)	Aus 4709	1340(T)
Aus 318.....	1310, 1311	Aus 4722	1329(T)
Aus 320.....	1304	Aus 4726	1340(T)
Aus 327.....	1329(T), 1330(P), 1331(T), 1334(T)	Aus 4727	1340(T)
Aus 328.....	1330(P), 1331(T), 1333(T), 1334(T), 1335(T)	AX 0118E	1340(T)
Aus 329.....	1335(T)	AX 0260E	1324(T)
Aus 332.....	1312	AX 0334E	1313, 1336(T), 1337(T)
Aus 333.....	1312	AX 0367E	1324(T)
Aus 334.....	1313, 1336(T), 1337(T)	AX 0415F	1329(T), 1330(P), 1331(T), 1332(T), 1335(T)
Aus 336.....	1340(T)	AX 0754E	1313, 1336(T), 1337(T)
Aus 337.....	1340(T)	AX 0809E	1306
Aus 364.....	1306	AX 0820E	1324(T)
Aus 367.....	1324(T)	AX 0822E	1324(T)
Aus 378.....	1325(T)	AX 4603F	1306
Aus 386.....	1306	AX 4604F	1306
Aus 387.....	1306	AX 4620F	1325(T)
Aus 388.....	1306	AX 4621F	1306
Aus 391.....	1306	AX 4708F	1332(T), 1335(T)
Aus 396.....	1306	AX 4722F	1329(T)
Aus 415.....	1329(T), 1330(P), 1331(T), 1332(T), 1335(T)	AX 60260	1324(T)
Aus 416.....	1330(P), 1331(T), 1335(T)	AX 63112	1313
Aus 423.....	1306	AX 66002	1313, 1336(T), 1337(T)
		AX 67248	1324(T)
		AX 67261	1324(T)
		AX 70117	1313

INT Chart	Notices
INT 60	1306
INT 601	1306, 1319
INT 602	1306
INT 603	1306
INT 604	1306
INT 620	1325(T)
INT 621	1306
INT 622	1306, 1325(T)
INT 708	1332(T), 1335(T)
INT 709	1340(T)
INT 722	1329(T)
INT 726	1340(T)
INT 727	1340(T)
ENC Cell	Notices
AU130090	1329(T), 1332(T), 1335(T)
AU160090	1340(T)
AU160120	1340(T)
AU210140	1325(T)
AU309144	1325(T)
AU320114	1331(T)
AU320115	1330(P)
AU335120	1340(T)
AU335121	1340(T)
AU336119	1340(T)
AU336120	1340(T)
AU421115	1330(P)
AU421116	1330(P)
AU422114	1333(T), 1335(T)
AU422115	1333(T), 1334(T)
AU429153	1304
AU423150	1324(T)
AU430153	1304
AU432115	1336(T), 1337(T)
AU436118	1340(T)
AU439144	1343(T)
AU439145	1346(T)
AU444147	1341(T)
AU5XX4P1	1327(T)
AU5XX113	1338(T)
AU5143P5	1345(T)
AU5XX154	1344(T)
AU5167X8	1342(T)
AU5XX222	1320(T)
AU5237X8	1321(T), 1322(T)
AU5XX248	1324(T)
AU5261P2	1324(T)

1304 AUSTRALIA - Product

Australian Hydrographic Service (AA437801, AA439121, AA439680)

New Electronic Navigation Chart (Seafarer ENC)

<i>Cell Name</i>	<i>Released</i>	<i>Title</i>
AU429153	November 2009	Coral Sea - Richmond River to Point Danger
AU430153	November 2009	Coral Sea - Woolli Woolli River to Evans Head

New Chart to be published shortly

<i>Chart</i>	<i>Title</i>	<i>Scale</i>	<i>Expected Publication Date</i>	<i>Expected Stock Availability</i>
Aus 49	Australia - North West Coast - Plans in Western Australia (Sheet 2) Plans: Beagle Bay Lagrange Bay	1:50 000 1:50 000	20 November 2009	23 December 2009
Aus 144	Australia - South Coast - Victoria - The Rip	1:12 500	20 November 2009	23 December 2009

New Edition to be published shortly

<i>Chart</i>	<i>Title</i>	<i>Scale</i>	<i>Expected Publication Date</i>	<i>Expected Stock Availability</i>
Aus 320	Australia - North West Coast - Western Australia - Browse Island to Adele Island including Bonaparte Archipelago	1:300 000	20 November 2009	23 December 2009

Australian National Tide Tables

<i>No</i>	<i>Title</i>	<i>Recommended Retail Price (incl GST)</i>	<i>Remarks</i>
AHP 11	Australian National Tide Tables (ANNTT) 2010	\$64.90	Australian National Tide Tables 2010 for Australia, Antarctica, Papua New Guinea, Solomon Islands and East Timor. Available from accredited chart agents.
AHP 114	Seafarer © Tides (SFT) 2010	\$59.95	Electronic Tide Tables (Seafarer Tides) 2009 for Australia, Antarctica, Papua New Guinea, Solomon Islands and East Timor. Provides tidal data for 2009 and 2010. Available from accredited chart agents and Seafarer® product distributors.

For further details refer to the AHS website at www.hydro.gov.au for new edition and new chart stock arrival information.

When placing orders with a chart agent, mariners should advise whether their order pertains to the current edition or the new edition.

1305 AUSTRALIA - Product - Amendment to Australian National Tide Tables 2010

Australian Hydrographic Service (AA435889)

Page 388

Amend JURIEN BAY To Chart Datum to 0.0

Amend PORT DENISON To Chart Datum to 0.0

Page 390

Amend PORT GREGORY To Chart Datum to 0.0

1306* PACIFIC OCEAN - Sydney, Madang, Guam - Submarine cable

Former Notice - 772(P)/2009 is cancelled
 PIPE International (AA437574, AA437575)

Aus 197 [691/2009]

Insert submarine cable, between

33° 43'.88 S	151° 39'.72 E
33° 44'.10 S	151° 39'.14 E
33° 44'.65 S	151° 38'.26 E
33° 44'.79 S	151° 37'.20 E
33° 44'.30 S	151° 28'.08 E
33° 44'.14 S	151° 26'.70 E
33° 44'.29 S	151° 26'.15 E
33° 44'.00 S	151° 24'.95 E
33° 43'.61 S	151° 24'.14 E
33° 42'.83 S	151° 21'.70 E
33° 42'.61 S	151° 20'.81 E
33° 42'.65 S	151° 20'.60 E
33° 43'.55 S	151° 19'.60 E
33° 43'.79 S	151° 19'.28 E
33° 43'.88 S	151° 18'.98 E
33° 43'.86 S	151° 18'.50 E

submarine cable, between

Aus 364 [750/2009]

Insert submarine cable, between

26° 49'.5 S	154° 43'.9 E
27° 03'.0 S	154° 45'.5 E

Aus 386 [702/2009]

Insert submarine cable, between

5° 58'.08 S	147° 47'.55 E
5° 58'.86 S	147° 48'.71 E
6° 00'.39 S	147° 49'.84 E
6° 01'.93 S	147° 54'.55 E
6° 06'.43 S	147° 56'.57 E
6° 23'.97 S	148° 13'.78 E
6° 28'.75 S	148° 21'.44 E
6° 31'.49 S	148° 28'.40 E
6° 32'.84 S	148° 41'.00 E
6° 39'.19 S	149° 09'.44 E
6° 39'.89 S	149° 11'.95 E
6° 48'.03 S	149° 34'.42 E

1306* PACIFIC OCEAN - Sydney, Madang, Guam - Submarine cable (continued)

Aus 387 [822/2009]

Insert submarine cable, between

4° 36'.00 S	146° 32'.69 E
5° 07'.02 S	146° 30'.53 E
5° 07'.23 S	146° 29'.93 E
5° 07'.89 S	146° 29'.68 E
5° 08'.79 S	146° 31'.09 E
5° 08'.73 S	146° 29'.98 E
5° 09'.61 S	146° 29'.63 E
5° 10'.73 S	146° 30'.04 E
5° 11'.67 S	146° 29'.21 E
5° 12'.50 S	146° 29'.19 E
5° 13'.26 S	146° 32'.90 E
5° 26'.84 S	146° 50'.40 E
5° 32'.11 S	146° 58'.10 E
5° 36'.23 S	147° 05'.37 E
5° 51'.23 S	147° 36'.82 E
5° 53'.58 S	147° 40'.34 E
5° 56'.36 S	147° 45'.40 E
5° 58'.86 S	147° 48'.71 E
6° 00'.39 S	147° 49'.84 E
6° 01'.93 S	147° 54'.55 E
6° 06'.43 S	147° 56'.57 E
6° 11'.78 S	148° 02'.18 E
6° 21'.60 S	148° 11'.06 E
6° 23'.02 S	148° 12'.52 E
5° 12'.90 S	145° 49'.23 E
5° 12'.66 S	145° 53'.07 E
5° 13'.03 S	145° 54'.59 E
5° 13'.12 S	145° 57'.06 E
5° 12'.73 S	145° 59'.88 E
5° 11'.70 S	146° 03'.68 E
5° 10'.99 S	146° 17'.23 E
5° 11'.29 S	146° 26'.00 E
5° 12'.05 S	146° 26'.03 E
5° 12'.67 S	146° 26'.95 E
5° 11'.78 S	146° 28'.55 E
5° 11'.67 S	146° 29'.21 E

submarine cable, between

Aus 388 [539/2009]

Insert submarine cable, between

3° 04'.67 S	145° 53'.61 E
3° 19'.83 S	146° 00'.38 E
3° 25'.42 S	146° 01'.88 E
3° 50'.89 S	146° 13'.27 E
3° 56'.24 S	146° 17'.55 E

Aus 391 [955/2008]

Insert submarine cable, between

1° 36'.30 S	145° 42'.92 E
1° 37'.47 S	145° 42'.60 E
2° 39'.86 S	145° 42'.60 E
2° 48'.28 S	145° 45'.59 E
3° 01'.62 S	145° 52'.22 E

submarine cable, between

1306* PACIFIC OCEAN - Sydney, Madang, Guam - Submarine cable (continued)

Aus 396 [361/2009]

Insert submarine cable, between

6° 39'.94 S	149° 12'.07 E
6° 50'.79 S	149° 42'.72 E
6° 53'.89 S	149° 59'.43 E
6° 54'.80 S	150° 10'.03 E
6° 54'.60 S	150° 17'.26 E
6° 55'.38 S	150° 24'.02 E
6° 56'.49 S	150° 28'.59 E
7° 01'.27 S	150° 38'.96 E
7° 11'.72 S	151° 11'.89 E
7° 12'.51 S	151° 13'.88 E
7° 16'.28 S	151° 20'.19 E

Aus 423 [12 12/2009]

Insert submarine cable, between

32° 49'.0 S	154° 08'.8 E
33° 05'.7 S	153° 57'.2 E
33° 12'.8 S	153° 48'.6 E
33° 15'.3 S	153° 39'.8 E
33° 15'.3 S	153° 26'.1 E
33° 14'.8 S	153° 17'.7 E
33° 19'.3 S	153° 04'.6 E
33° 32'.9 S	152° 48'.2 E
33° 36'.9 S	152° 40'.9 E
33° 38'.8 S	152° 34'.3 E
33° 39'.4 S	152° 23'.3 E
33° 37'.6 S	152° 22'.2 E
33° 39'.7 S	152° 20'.4 E
33° 43'.5 S	152° 11'.9 E
33° 44'.4 S	152° 07'.9 E
33° 43'.8 S	152° 00'.4 E
33° 43'.7 S	151° 40'.5 E
33° 32'.9 S	152° 48'.2 E
33° 40'.6 S	152° 45'.3 E

submarine cable, between

1306* PACIFIC OCEAN - Sydney, Madang, Guam - Submarine cable (continued)

Aus 424 [1215/2009]

Insert submarine cable, between

25° 25'.0 S	154° 38'.5 E
25° 28'.8 S	154° 38'.7 E
26° 03'.4 S	154° 38'.4 E
27° 21'.8 S	154° 47'.9 E
27° 39'.9 S	154° 51'.6 E
27° 59'.9 S	155° 00'.4 E
28° 15'.8 S	155° 05'.0 E
28° 18'.3 S	155° 04'.6 E
28° 19'.4 S	155° 07'.1 E
28° 21'.9 S	155° 08'.2 E
28° 49'.2 S	155° 12'.4 E
29° 49'.3 S	155° 13'.3 E
30° 02'.5 S	155° 09'.3 E
30° 18'.1 S	155° 01'.4 E
30° 27'.7 S	154° 54'.5 E
30° 50'.9 S	154° 44'.4 E
31° 42'.6 S	154° 14'.2 E
31° 51'.4 S	154° 11'.8 E
31° 59'.6 S	154° 13'.9 E
32° 11'.7 S	154° 24'.0 E
32° 17'.2 S	154° 26'.0 E
32° 24'.8 S	154° 25'.4 E
32° 27'.6 S	154° 24'.2 E
33° 05'.7 S	153° 57'.2 E
33° 12'.8 S	153° 48'.6 E
33° 15'.3 S	153° 39'.8 E
33° 15'.3 S	153° 26'.1 E
33° 14'.8 S	153° 17'.7 E
33° 19'.3 S	153° 04'.6 E
33° 32'.9 S	152° 48'.2 E
33° 36'.9 S	152° 40'.9 E
33° 38'.8 S	152° 34'.3 E
33° 39'.4 S	152° 23'.3 E
33° 37'.6 S	152° 22'.2 E
33° 39'.7 S	152° 20'.4 E
33° 43'.5 S	152° 11'.9 E
33° 44'.4 S	152° 07'.9 E
33° 43'.8 S	152° 00'.4 E
33° 43'.7 S	151° 40'.5 E
33° 32'.9 S	152° 48'.2 E
33° 40'.6 S	152° 45'.3 E
28° 18'.3 S	155° 04'.6 E
28° 25'.3 S	154° 59'.5 E

submarine cable, between

submarine cable, between

1306* PACIFIC OCEAN - Sydney, Madang, Guam - Submarine cable (continued)

Aus 426 [1262/2009]

Insert submarine cable, between

20° 20'.0 S	155° 09'.4 E
21° 07'.4 S	155° 24'.7 E
21° 18'.9 S	155° 26'.9 E
21° 36'.2 S	155° 32'.3 E
21° 44'.1 S	155° 37'.7 E
21° 53'.7 S	155° 41'.8 E
22° 06'.2 S	155° 43'.8 E
22° 17'.1 S	155° 41'.3 E
22° 29'.8 S	155° 32'.5 E
22° 44'.3 S	155° 16'.8 E
23° 11'.9 S	155° 02'.6 E
23° 30'.1 S	154° 57'.9 E
23° 39'.4 S	154° 58'.1 E
23° 48'.9 S	155° 01'.0 E
24° 15'.0 S	155° 00'.4 E
24° 49'.6 S	154° 45'.7 E
25° 16'.2 S	154° 37'.8 E
25° 20'.8 S	154° 38'.2 E
26° 03'.4 S	154° 38'.4 E
26° 15'.1 S	154° 39'.8 E

Aus 462 [944/2009]

Insert submarine cable, between

0° 03'.3 N	145° 53'.9 E
0° 04'.8 S	145° 54'.1 E
0° 13'.1 S	145° 56'.8 E
0° 25'.0 S	145° 56'.1 E
0° 37'.0 S	145° 59'.3 E
0° 53'.5 S	145° 56'.9 E
1° 16'.5 S	145° 48'.8 E
1° 41'.4 S	145° 41'.5 E
2° 00'.2 S	145° 37'.9 E
2° 15'.3 S	145° 37'.8 E
2° 19'.3 S	145° 37'.0 E
2° 39'.9 S	145° 42'.6 E
2° 48'.3 S	145° 45'.6 E
3° 01'.6 S	145° 52'.2 E
3° 19'.8 S	146° 00'.4 E
3° 25'.4 S	146° 01'.9 E
3° 50'.9 S	146° 13'.3 E
3° 58'.6 S	146° 18'.5 E
4° 05'.3 S	146° 19'.6 E
4° 15'.6 S	146° 25'.1 E

1306* PACIFIC OCEAN - Sydney, Madang, Guam - Submarine cable (continued)

Aus 489 [12/12/2009]

Insert submarine cable, between

32° 15'.8 S	154° 25'.5 E
32° 19'.0 S	154° 26'.2 E
32° 24'.8 S	154° 25'.4 E
32° 27'.6 S	154° 24'.2 E
33° 05'.7 S	153° 57'.2 E
33° 12'.8 S	153° 48'.6 E
33° 15'.3 S	153° 39'.8 E
33° 15'.3 S	153° 26'.1 E
33° 14'.8 S	153° 17'.7 E
33° 19'.3 S	153° 04'.6 E
33° 32'.9 S	152° 48'.2 E
33° 36'.9 S	152° 40'.9 E
33° 38'.8 S	152° 34'.3 E
33° 39'.4 S	152° 23'.3 E
33° 37'.6 S	152° 22'.2 E
33° 39'.5 S	152° 21'.8 E
33° 43'.5 S	152° 11'.9 E
33° 44'.4 S	152° 07'.9 E
33° 32'.9 S	152° 48'.2 E
33° 40'.6 S	152° 45'.3 E

submarine cable, between

Aus 646 [822/2009]

Insert submarine cable, between

5° 12'.815 S	145° 53'.750 E
5° 12'.661 S	145° 53'.069 E
5° 12'.771 S	145° 52'.303 E
5° 12'.815 S	145° 51'.218 E
5° 12'.951 S	145° 49'.781 E
5° 12'.896 S	145° 49'.225 E

Aus 646 (plan, Madang Harbour)

Insert submarine cable, between

5° 12'.931 S	145° 50'.000 E
5° 12'.951 S	145° 49'.781 E
5° 12'.896 S	145° 49'.225 E

Aus 809 [12/12/2009]

Insert submarine cable, between

33° 42'.49 S	152° 14'.38 E
33° 43'.52 S	152° 11'.92 E
33° 44'.39 S	152° 07'.88 E
33° 43'.78 S	152° 00'.40 E
33° 43'.75 S	151° 40'.47 E
33° 44'.10 S	151° 39'.14 E
33° 44'.65 S	151° 38'.26 E
33° 44'.79 S	151° 37'.20 E
33° 44'.30 S	151° 28'.08 E
33° 44'.14 S	151° 26'.70 E
33° 44'.29 S	151° 26'.15 E
33° 44'.00 S	151° 24'.95 E
33° 43'.61 S	151° 24'.14 E
33° 42'.83 S	151° 21'.70 E
33° 42'.61 S	151° 20'.81 E
33° 43'.55 S	151° 19'.60 E
33° 43'.79 S	151° 19'.28 E
33° 43'.86 S	151° 18'.50 E

submarine cable, between

1306* PACIFIC OCEAN - Sydney, Madang, Guam - Submarine cable (continued)

Aus 4060 (INT 60) [1280/2009]

Insert submarine cable, between

2° 36'.3 S	145° 41'.4 E
4° 27'.1 S	146° 31'.4 E
5° 12'.5 S	146° 29'.2 E
5° 51'.2 S	147° 36'.8 E
6° 31'.5 S	148° 28'.4 E
6° 56'.5 S	150° 28'.6 E
8° 28'.6 S	154° 37'.0 E
8° 26'.6 S	154° 58'.6 E
9° 38'.9 S	156° 02'.9 E
9° 44'.6 S	156° 37'.0 E
9° 58'.0 S	156° 47'.6 E
10° 43'.2 S	156° 42'.9 E
11° 56'.0 S	155° 05'.8 E
12° 39'.0 S	154° 44'.1 E
14° 21'.3 S	154° 34'.0 E
17° 02'.3 S	154° 54'.6 E
17° 32'.0 S	154° 48'.0 E
18° 04'.4 S	154° 15'.1 E
18° 43'.4 S	154° 12'.0 E
19° 38'.2 S	154° 56'.0 E
22° 17'.1 S	155° 41'.3 E
23° 13'.1 S	155° 02'.2 E
25° 16'.2 S	154° 37'.8 E
29° 49'.3 S	155° 13'.3 E
31° 51'.4 S	154° 11'.8 E
32° 20'.2 S	154° 26'.1 E
33° 12'.8 S	153° 48'.6 E

submarine cable, between

Aus 4601 (INT 601) [1062/2008]

Insert submarine cable, between

33° 30'.0 S	152° 51'.6 E
33° 32'.9 S	152° 48'.2 E
33° 38'.8 S	152° 34'.3 E

1306* PACIFIC OCEAN - Sydney, Madang, Guam - Submarine cable (continued)

Aus 4602 (INT 602) [1217/2009]

Insert submarine cable, between

16° 00'.0 S	154° 45'.7 E
17° 00'.3 S	154° 54'.6 E
17° 04'.0 S	154° 48'.0 E
18° 00'.4 S	154° 15'.1 E
18° 02'.9 S	154° 10'.6 E
18° 04'.4 S	154° 12'.0 E
18° 05'.8 S	154° 16'.7 E
19° 01'.2 S	154° 42'.0 E
19° 03'.2 S	154° 56'.0 E
21° 00'.4 S	155° 24'.7 E
21° 03'.2 S	155° 32'.3 E
21° 05'.7 S	155° 41'.8 E
22° 01'.1 S	155° 41'.3 E
22° 04'.2 S	155° 16'.1 E
23° 13'.1 S	155° 02'.2 E
23° 38'.6 S	154° 58'.0 E
23° 50'.0 S	155° 01'.1 E
24° 15'.0 S	155° 00'.4 E
25° 16'.2 S	154° 37'.8 E
26° 03'.4 S	154° 38'.4 E
27° 21'.8 S	154° 47'.9 E
28° 21'.9 S	155° 08'.2 E
28° 49'.2 S	155° 12'.4 E
29° 49'.3 S	155° 13'.3 E
30° 27'.7 S	154° 54'.5 E
31° 42'.6 S	154° 14'.2 E
31° 51'.4 S	154° 11'.8 E
31° 59'.4 S	154° 13'.8 E
32° 11'.7 S	154° 24'.0 E
32° 27'.6 S	154° 24'.2 E
33° 05'.7 S	153° 57'.2 E
33° 12'.8 S	153° 48'.6 E
33° 15'.3 S	153° 39'.8 E
33° 14'.8 S	153° 17'.7 E
33° 19'.3 S	153° 04'.6 E
33° 32'.9 S	152° 48'.2 E
33° 38'.8 S	152° 34'.3 E

Aus 4603 (INT 603) [1265/2009]

Insert submarine cable, between

1° 00'.0 S	145° 54'.2 E
1° 41'.4 S	145° 41'.5 E
2° 19'.3 S	145° 37'.0 E
2° 48'.3 S	145° 45'.6 E
4° 05'.3 S	146° 19'.6 E
4° 32'.2 S	146° 32'.8 E
5° 12'.5 S	146° 29'.2 E
5° 32'.1 S	146° 58'.1 E
6° 01'.9 S	147° 54'.5 E
6° 24'.0 S	148° 13'.8 E
6° 31'.7 S	148° 30'.0 E
5° 12'.5 S	146° 29'.2 E
5° 12'.9 S	145° 49'.8 E

submarine cable, between

1306* PACIFIC OCEAN - Sydney, Madang, Guam - Submarine cable (continued)

Aus 4604 (INT 604) [1280/2009]

Insert submarine cable, between

5° 18'.9 S	146° 40'.1 E
5° 32'.1 S	146° 58'.1 E
5° 51'.2 S	147° 36'.8 E
6° 24'.0 S	148° 13'.8 E
6° 31'.5 S	148° 28'.4 E
6° 39'.9 S	149° 12'.0 E
6° 50'.8 S	149° 42'.7 E
6° 56'.5 S	150° 28'.6 E
7° 16'.1 S	151° 19'.9 E
7° 41'.4 S	152° 13'.4 E
7° 52'.6 S	152° 54'.3 E
8° 22'.5 S	154° 06'.3 E
8° 28'.6 S	154° 37'.0 E
8° 26'.6 S	154° 58'.6 E
9° 17'.5 S	155° 40'.6 E
9° 38'.9 S	156° 02'.9 E
9° 44'.6 S	156° 37'.0 E
10° 13'.0 S	156° 48'.1 E
10° 50'.1 S	156° 38'.2 E
11° 56'.0 S	155° 05'.8 E
12° 39'.0 S	154° 44'.1 E
15° 00'.0 S	154° 34'.8 E
17° 02'.3 S	154° 54'.6 E
17° 32'.0 S	154° 48'.0 E
18° 04'.4 S	154° 15'.1 E
18° 26'.9 S	154° 10'.6 E
18° 43'.4 S	154° 12'.0 E
18° 55'.8 S	154° 16'.7 E
19° 19'.2 S	154° 42'.0 E
19° 38'.2 S	154° 56'.0 E
20° 58'.8 S	155° 22'.0 E

Aus4621 (INT 621) [1217/2009]

Insert submarine cable, between

7° 04'.0 S	150° 48'.8 E
7° 11'.7 S	151° 11'.9 E
7° 16'.1 S	151° 19'.9 E
7° 22'.0 S	151° 25'.3 E
7° 30'.4 S	151° 46'.2 E
7° 35'.0 S	152° 03'.4 E
7° 41'.4 S	152° 13'.4 E
7° 52'.6 S	152° 54'.3 E
8° 09'.0 S	153° 36'.1 E
8° 14'.9 S	153° 50'.2 E
8° 19'.6 S	153° 56'.6 E
8° 22'.5 S	154° 06'.3 E
8° 22'.2 S	154° 14'.8 E
8° 28'.6 S	154° 37'.0 E
8° 26'.6 S	154° 58'.6 E
8° 45'.5 S	155° 15'.4 E
9° 01'.4 S	155° 22'.0 E
9° 17'.5 S	155° 40'.6 E
9° 20'.0 S	155° 47'.9 E
9° 38'.9 S	156° 02'.9 E
9° 44'.5 S	156° 17'.0 E
9° 44'.6 S	156° 37'.0 E
9° 47'.5 S	156° 42'.3 E
9° 58'.0 S	156° 47'.6 E
10° 13'.0 S	156° 48'.1 E
10° 26'.4 S	156° 43'.0 E
10° 37'.7 S	156° 44'.0 E
10° 43'.2 S	156° 42'.9 E
10° 50'.1 S	156° 38'.2 E

I

11° 56'.0 S	155° 05'.8 E
12° 39'.0 S	154° 44'.1 E
14° 21'.3 S	154° 34'.0 E
15° 00'.0 S	154° 34'.8 E
15° 48'.1 S	154° 41'.8 E
16° 03'.7 S	154° 46'.6 E
17° 02'.3 S	154° 54'.6 E
17° 32'.0 S	154° 48'.0 E
18° 04'.4 S	154° 15'.1 E
18° 12'.3 S	154° 11'.3 E
18° 43'.4 S	154° 12'.0 E
18° 55'.8 S	154° 16'.7 E
19° 19'.2 S	154° 42'.0 E
19° 38'.2 S	154° 56'.0 E
21° 07'.4 S	155° 24'.7 E
21° 36'.2 S	155° 32'.3 E
21° 53'.7 S	155° 41'.8 E
22° 06'.2 S	155° 43'.8 E
22° 17'.1 S	155° 41'.3 E
22° 29'.8 S	155° 32'.5 E
22° 40'.0 S	155° 21'.4 E
12° 56'.6 S	154° 42'.4 E
12° 58'.5 S	154° 34'.0 E

submarine cable, between

1306* PACIFIC OCEAN - Sydney, Madang, Guam - Submarine cable (continued)

Aus 4622 (INT 622) [1155/2009]

Insert submarine cable, between

1° 02'.5 N	145° 56'.3 E
0° 44'.2 N	145° 51'.6 E
0° 04'.8 S	145° 54'.1 E
0° 13'.1 S	145° 56'.8 E
0° 25'.0 S	145° 56'.1 E
0° 37'.5 S	145° 59'.4 E
0° 53'.5 S	145° 56'.9 E
1° 41'.4 S	145° 41'.5 E
2° 00'.2 S	145° 37'.9 E
2° 19'.3 S	145° 37'.0 E
2° 48'.3 S	145° 45'.6 E
3° 19'.8 S	146° 00'.4 E
3° 50'.9 S	146° 13'.3 E
4° 05'.3 S	146° 19'.6 E
4° 27'.1 S	146° 31'.4 E
4° 32'.2 S	146° 32'.8 E
5° 07'.0 S	146° 30'.5 E
5° 12'.5 S	146° 29'.2 E
5° 13'.3 S	146° 32'.9 E
5° 32'.1 S	146° 58'.1 E
5° 51'.2 S	147° 36'.8 E
6° 00'.4 S	147° 49'.8 E
6° 01'.9 S	147° 54'.5 E
6° 06'.4 S	147° 56'.6 E
6° 24'.0 S	148° 13'.8 E
6° 31'.5 S	148° 28'.4 E
6° 32'.8 S	148° 41'.0 E
6° 39'.9 S	149° 12'.0 E
6° 50'.8 S	149° 42'.7 E
6° 53'.9 S	149° 59'.4 E
6° 54'.6 S	150° 17'.3 E
6° 56'.5 S	150° 28'.6 E
7° 01'.3 S	150° 39'.0 E
7° 11'.7 S	151° 11'.9 E
7° 16'.1 S	151° 19'.9 E
7° 22'.0 S	151° 25'.3 E
7° 30'.4 S	151° 46'.2 E
7° 35'.0 S	152° 03'.4 E
7° 41'.4 S	152° 13'.4 E
7° 52'.6 S	152° 54'.3 E
8° 09'.0 S	153° 36'.1 E
8° 14'.9 S	153° 50'.2 E
8° 19'.6 S	153° 56'.6 E
8° 22'.5 S	154° 06'.3 E
8° 22'.2 S	154° 14'.8 E
8° 28'.6 S	154° 37'.0 E
8° 28'.1 S	154° 40'.9 E
8° 25'.2 S	154° 49'.2 E
8° 26'.6 S	154° 58'.6 E
8° 30'.0 S	155° 02'.1 E
5° 12'.9 S	145° 49'.2 E
5° 13'.1 S	145° 57'.1 E
5° 11'.7 S	146° 03'.7 E
5° 11'.3 S	146° 26'.0 E
5° 12'.7 S	146° 26'.9 E
5° 12'.5 S	146° 29'.2 E

submarine cable, between

1306* PACIFIC OCEAN - Sydney, Madang, Guam - Submarine cable (continued)

AX 0809E [1212/2009]

Insert	submarine cable, between	33° 42'.49 S	152° 14'.38 E
		33° 43'.52 S	152° 11'.92 E
		33° 44'.39 S	152° 07'.88 E
		33° 43'.78 S	152° 00'.40 E
		33° 43'.75 S	151° 40'.47 E
		33° 44'.10 S	151° 39'.14 E
		33° 44'.65 S	151° 38'.26 E
		33° 44'.79 S	151° 37'.20 E
		33° 44'.30 S	151° 28'.08 E
		33° 44'.14 S	151° 26'.70 E
		33° 44'.29 S	151° 26'.15 E
		33° 44'.00 S	151° 24'.95 E
		33° 43'.61 S	151° 24'.14 E
		33° 42'.83 S	151° 21'.70 E
		33° 42'.61 S	151° 20'.81 E
	submarine cable, between	33° 43'.55 S	151° 19'.60 E
		33° 43'.79 S	151° 19'.28 E
		33° 43'.86 S	151° 18'.50 E

AX 4603F [1265/2009]

Insert	submarine cable, between	1° 00'.0 S	145° 54'.2 E
		1° 41'.4 S	145° 41'.5 E
		2° 19'.3 S	145° 37'.0 E
		2° 48'.3 S	145° 45'.6 E
		4° 05'.3 S	146° 19'.6 E
		4° 32'.2 S	146° 32'.8 E
		5° 12'.5 S	146° 29'.2 E
		5° 32'.1 S	146° 58'.1 E
		6° 01'.9 S	147° 54'.5 E
		6° 24'.0 S	148° 13'.8 E
		6° 31'.7 S	148° 30'.0 E
	submarine cable, between	5° 12'.5 S	146° 29'.2 E
		5° 12'.9 S	145° 49'.8 E

1306* PACIFIC OCEAN - Sydney, Madang, Guam - Submarine cable (continued)

AX 4604F [1280/2009]

Insert submarine cable, between

5° 18'.9 S	146° 40'.1 E
5° 32'.1 S	146° 58'.1 E
5° 51'.2 S	147° 36'.8 E
6° 24'.0 S	148° 13'.8 E
6° 31'.5 S	148° 28'.4 E
6° 39'.9 S	149° 12'.0 E
6° 50'.8 S	149° 42'.7 E
6° 56'.5 S	150° 28'.6 E
7° 16'.1 S	151° 19'.9 E
7° 41'.4 S	152° 13'.4 E
7° 52'.6 S	152° 54'.3 E
8° 22'.5 S	154° 06'.3 E
8° 28'.6 S	154° 37'.0 E
8° 26'.6 S	154° 58'.6 E
9° 17'.5 S	155° 40'.6 E
9° 38'.9 S	156° 02'.9 E
9° 44'.6 S	156° 37'.0 E
10° 13'.0 S	156° 48'.1 E
10° 50'.1 S	156° 38'.2 E
11° 56'.0 S	155° 05'.8 E
12° 39'.0 S	154° 44'.1 E
15° 00'.0 S	154° 34'.8 E
17° 02'.3 S	154° 54'.6 E
17° 32'.0 S	154° 48'.0 E
18° 04'.4 S	154° 15'.1 E
18° 26'.9 S	154° 10'.6 E
18° 43'.4 S	154° 12'.0 E
18° 55'.8 S	154° 16'.7 E
19° 19'.2 S	154° 42'.0 E
19° 38'.2 S	154° 56'.0 E
20° 58'.8 S	155° 22'.0 E

1306* PACIFIC OCEAN - Sydney, Madang, Guam - Submarine cable (continued)

AX 4621F [1217/2009]

Insert submarine cable, between

7° 04'.0 S	150° 48'.8 E
7° 11'.7 S	151° 11'.9 E
7° 16'.1 S	151° 19'.9 E
7° 22'.0 S	151° 25'.3 E
7° 35'.0 S	152° 03'.4 E
7° 41'.4 S	152° 13'.4 E
7° 52'.6 S	152° 54'.3 E
8° 09'.0 S	153° 36'.1 E
8° 14'.9 S	153° 50'.2 E
8° 19'.6 S	153° 56'.6 E
8° 22'.5 S	154° 06'.3 E
8° 22'.2 S	154° 14'.8 E
8° 28'.6 S	154° 37'.0 E
8° 25'.2 S	154° 49'.2 E
8° 25'.3 S	154° 54'.6 E
8° 26'.6 S	154° 58'.6 E
8° 45'.5 S	155° 15'.4 E
9° 01'.4 S	155° 22'.0 E
9° 17'.5 S	155° 40'.6 E
9° 20'.0 S	155° 47'.9 E
9° 38'.9 S	156° 02'.9 E
9° 44'.5 S	156° 17'.0 E
9° 44'.6 S	156° 37'.0 E
9° 47'.5 S	156° 42'.3 E
9° 58'.0 S	156° 47'.6 E
10° 13'.0 S	156° 48'.1 E
10° 26'.4 S	156° 43'.0 E
10° 37'.7 S	156° 44'.0 E
10° 43'.2 S	156° 42'.9 E
10° 50'.1 S	156° 38'.2 E
11° 56'.0 S	155° 05'.8 E
12° 39'.0 S	154° 44'.1 E
14° 21'.3 S	154° 34'.0 E
15° 00'.0 S	154° 34'.8 E
15° 48'.1 S	154° 41'.8 E
16° 03'.7 S	154° 46'.6 E
17° 02'.3 S	154° 54'.6 E
17° 32'.0 S	154° 48'.0 E
18° 04'.4 S	154° 15'.1 E
18° 12'.3 S	154° 11'.3 E
18° 26'.9 S	154° 10'.6 E
18° 43'.4 S	154° 12'.0 E
18° 55'.8 S	154° 16'.7 E
19° 03'.3 S	154° 23'.3 E
19° 19'.2 S	154° 42'.0 E
19° 38'.2 S	154° 56'.0 E
21° 07'.4 S	155° 24'.7 E
21° 36'.2 S	155° 32'.3 E
21° 53'.7 S	155° 41'.8 E
22° 06'.2 S	155° 43'.8 E
22° 17'.1 S	155° 41'.3 E
22° 29'.8 S	155° 32'.5 E
22° 40'.0 S	155° 21'.4 E
12° 56'.6 S	154° 42'.4 E
12° 58'.5 S	154° 34'.0 E

submarine cable, between

1307* AUSTRALIA - NEW SOUTH WALES - Hawkesbury River - Sanbrook Inlet - Light beacon altered
NSW Maritime (AA437641, AA437642)

Aus 204 [283/2009]

Substitute	starboard lateral beacon, without topmark for light beacon	33° 32'.66 S	151° 13'.49 E
------------	--	--------------	---------------

Aus 217 [282/2009]

Substitute	starboard lateral beacon, No457, without topmark for light beacon	33° 32'.66 S	151° 13'.49 E
------------	---	--------------	---------------

1308* AUSTRALIA - NEW SOUTH WALES - Brisbane Water - Point Frederick - Light beacon repositioned

Former Notice - 257(T)/2009 is cancelled

NSW Maritime (AA436592, AA436593)

Aus 216 [1257/2009]

Move	light beacon	33° 27'.17 S	151° 20'.37 E
	to	33° 27'.156 S	151° 20'.370 E

1309* AUSTRALIA - QUEENSLAND - Whitsundays - Hook Island - Stanley Point - Buoy

Maritime Safety Queensland (AA436698, AA436699)

Aus 254 (plan, Stonehaven Anchorage) [1094/2009]

Move	buoy	20° 04'.38 S	148° 54'.14 E
	to	20° 04'.342 S	148° 54'.166 E

1310* AUSTRALIA - WESTERN AUSTRALIA - Joseph Bonaparte Gulf - Light

ENI Australia (AA436906)

Aus 318 [827/2009]

Amend	light range to 10M	13° 53'.7 S	128° 29'.1 E
-------	--------------------	-------------	--------------

1311* AUSTRALIA - WESTERN AUSTRALIA - Cambridge Gulf - Depths

Australian Hydrographic Service (AA436590)

Aus 318 [1310/2009]

Insert	contour, between	14° 47'.41 S	128° 17'.26 E
		14° 47'.41 S	128° 17'.59 E

Delete	depth, 8 ₄ m contour, between	14° 46'.6 S	128° 17'.8 E
		14° 46'.8 S	128° 17'.2 E
		14° 46'.4 S	128° 17'.7 E
		14° 47'.4 S	128° 17'.6 E

Aus 726 [826/2009]

Delete	depth, 8 ₄ m and enclosing contour	14° 46'.5 S	128° 17'.7 E
	depth, 9 ₈ m and enclosing contour	14° 47'.0 S	128° 17'.3 E

1312* AUSTRALIA - WESTERN AUSTRALIA - African Reef - Depths

UKHO (AA436144)

Aus 332 [NE 25/9/2009]

Insert accompanying block 29° 00'.0 S 114° 39'.0 E

Aus 333 [NE 25/9/2009]

Insert accompanying block 29° 03'.0 S 114° 42'.0 E

1313* AUSTRALIA - WESTERN AUSTRALIA - Fremantle - Rock

Australian Hydrographic Service (AA438238, AA214987), Department of Transport WA (AA438219, AA438220)

Aus 112 [1165/2009]Insert depth, 2₉m, with legend R 32° 04'.300 S 115° 43'.661 EDelete depth, 3₄m 32° 04'.30 S 115° 43'.80 E**Aus 113 [1165/2009]**Insert depth, 2₉m, with legend R 32° 04'.300 S 115° 43'.661 EDelete depth, 3₇m 32° 04'.31 S 115° 43'.66 E**Aus 117 [1165/2009]**Insert depth, 3₁m, with legend R, and extend contour W to enclose 32° 04'.300 S 115° 43'.661 E**Aus 334 [872/2009]**Insert depth, 3₁m, and extend contour W to enclose 32° 04'.30 S 115° 43'.66 EDelete depth, 3₈m 32° 04'.0 S 115° 43'.7 E**Aus 754 [872/2009]**Insert depth, 3₁m, and extend contour W to enclose 32° 04'.30 S 115° 43'.66 EDelete depth, 3₈m 32° 04'.0 S 115° 43'.7 E
depth, 3₃m 32° 04'.6 S 115° 44'.0 E**AX 0334E [872/2009]**Insert depth, 3₁m, and extend contour W to enclose 32° 04'.30 S 115° 43'.66 EDelete depth, 3₈m 32° 04'.0 S 115° 43'.7 E**AX 0754E [872/2009]**Insert depth, 3₁m, and extend contour W to enclose 32° 04'.30 S 115° 43'.66 EDelete depth, 3₈m 32° 04'.6 S 115° 44'.0 E
depth, 3₃m 32° 04'.0 S 115° 43'.7 E**AX 63112 [1165/2009]**Insert depth, 2₉m, with legend R 32° 04'.300 S 115° 43'.661 EDelete depth, 3₄m 32° 04'.30 S 115° 43'.80 E**AX 66002 [872/2009]**Insert depth, 3₁m, and extend contour W to enclose 32° 04'.30 S 115° 43'.66 EDelete depth, 3₃m 32° 04'.6 S 115° 44'.0 E
depth, 3₈m 32° 04'.0 S 115° 43'.7 E**AX 70117 [1165/2009]**Insert depth, 3₁m, with legend R, and extend contour W to enclose 32° 04'.300 S 115° 43'.661 E

1314* AUSTRALIA - TASMANIA - Georges Bay - Beacon discontinued

Former Notice - 978(T)/2009 is cancelled
 Marine and Safety Tasmania Notice M153/2009 (AA437444)

Aus 169 (plan, Georges Bay) [1171/2009]

Delete	beacon	41° 18'.33 S	148° 18'.18 E
--------	--------	--------------	---------------

1315* AUSTRALIA - TASMANIA - River Tamar - Stephenson's Bend - Beacon discontinued

Marine and Safety Tasmania Notice M158/2009 (AA437766)

Aus 168 (plan, Launceston Wharves) [1030/2008]

Delete	beacon	41° 25'.00 S	147° 07'.31 E
--------	--------	--------------	---------------

1316* AUSTRALIA - TASMANIA - Burnie - Lights altered

Marine and Safety Tasmania Notice M157/2009 (AA437761, AA439193)

Aus 163 [1063/2009]

Amend	light to <i>Oc.5s 16m 6M</i>	41° 02'.91 S	145° 55'.01 E
	light to <i>Fl.G.3s 5M</i>	41° 03'.08 S	145° 55'.28 E

Aus 163 (plan, Port of Burnie)

Amend	light to <i>Oc.5s 16m 6M</i>	41° 02'.91 S	145° 55'.01 E
	light to <i>Fl.G.3s 16m 5M</i>	41° 03'.08 S	145° 55'.28 E

1317* AUSTRALIA - VICTORIA - Port Phillip - Lonsdale Rock - Depth

Port of Melbourne Port Corporation (AA437938)

Aus 158 [1275/2009]

Substitute	depth, <i>6₁m</i> , for depth, <i>7₂m</i>	38° 17'.92 S	144° 37'.37 E
------------	---	--------------	---------------

1318* AUSTRALIA - VICTORIA - Port Phillip - Port Melbourne Channel - Light beacons established

Former Notice - 278(T)/2009 is cancelled
 Victorian Notice 114/2009 (AA423968)

Aus 143 [1276/2009]

Substitute	starboard lateral light beacon, <i>Fl(2)G.4s E1</i> , with topmark for light beacon	37° 57'.8 S	144° 55'.5 E
------------	---	-------------	--------------

Aus 155 [1277/2009]

Insert	accompanying block	37° 56'.5 S	144° 55'.5 E
--------	--------------------	-------------	--------------

1319 NEW ZEALAND - Hauraki Gulf - Depth

NZ Notice 22/199/2009 (AA437505)

Aus 4601 (INT 601) [1306/2009]

Substitute	depth, <i>15m</i> , for depth, <i>16m</i>	36° 26'.0 S	175° 08'.0 E
------------	---	-------------	--------------

1320(T)/2009 AUSTRALIA - NEW SOUTH WALES - Clarence River - Dredging operations

Date - Until 30 November 2009

NSW Maritime Notice NC0955 (AA439502)

The dredge *Port Frederick* is conducting dredging operations in the vicinity of position 29° 25'.5 S 153° 21'.2 E.

Mariners are advised to navigate with caution in the area.

Chart temporarily affected - Aus 222 - Aus 812 - AU5XX222**1321(T)/2009 AUSTRALIA - QUEENSLAND - Brisbane River - Quarantine Flats Reach - Harbour works completed**

Former Notice - 1182(T)/2009 is cancelled

Maritime Safety Queensland Notice 755/2009 (AA438757)

Cancel this notice on receipt.

Chart formerly affected - Aus 237 - Aus 238 - AU5237X8**1322(T)/2009 AUSTRALIA - QUEENSLAND - Brisbane River - Eagle Farm Flats Reach - Harbour works**

Date - Until 23 November 2009

Maritime Safety Queensland Notice 757(T)/2009 (AA439007)

Harbour works associated with the construction of a new jetty (27° 26'.25 S 153° 06'.72 E) are in progress.

Mariners are advised to navigate with caution in the area.

Chart temporarily affected - Aus 238 - AU5237X8**1323(T)/2009 AUSTRALIA - QUEENSLAND - Moreton Bay - Deception Bay - Wreck**

Maritime Safety Queensland Notice 751(T)/2009 (AA438766)

A stranded wreck marked by a special light buoy, *Fl. Y.2-5s*, exists in position 27° 09'.48 S 153° 03'.31 E (WGS84 datum).

Mariners are advised to navigate with caution in the area.

Chart temporarily affected - Aus 236**1324(T)/2009 AUSTRALIA - QUEENSLAND - Shoalwater Bay - Live firing completed**

Former Notice - 1242(T)/2009 is cancelled

Maritime Safety Queensland Notice 691(T)/2009 (AA435330)

Cancel this notice on receipt.

Chart formerly affected - Aus 248 - Aus 260 - Aus 261 - Aus 367 - Aus 820 - Aus 822 - AX 0260E - AX 0367E - AX 0820E - AX 0822E - AX 60260 - AX 67248 - AX 67261 - AU423150 - AU5261P2 - AU5XX248**1325(T)/2009 PAPUA NEW GUINEA - Cape Blackwood - Seismic survey southwards**

Date - Until 12 December 2009

National Maritime Safety Authority PNG Notice 64/2009 (AA438337, AA438768)

MV *Kulasai* and MV *Mariner* will be conducting a survey in the vicinity of Kumul Marine Terminal (8° 04'.0 S 144° 34'.0 E) from 21 to 25 November 2009 and 28 November to 12 December 2009. A 2M exclusion zone exists around MV *Mariner* unless permitted by the Kumul Marine Terminal Superintendent who can be contacted on VHF Ch 74.

Vessels will display appropriate lights and shapes and will monitor VHF Ch 16.

Chart temporarily affected - Aus 378 - Aus 502 - Aus 4620 (INT 620) - Aus 4622 (INT 622) - AX 4620F - AU210140 - AU309144

1326(T)/2009 PAPUA NEW GUINEA - Cape Gazelle - Light relit*Former Notice* - 557(T)/2008 is cancelled

National Maritime Safety Authority PNG Notice 65/2009 (AA439380)

Cancel this notice on receipt.

Chart formerly affected - Aus 545 - Aus 554**1327(T)/2009 AUSTRALIA - QUEENSLAND - Weipa - Depth information***Former Notice* - 1103(T)/2008 is cancelled

Maritime Safety Queensland Notice 759(T)/2009 (AA439470)

Available depths as at 16 November 2009:

	<i>Metres</i>
South Channel	11.1
Departure Channel	11.1
Cora Bank South Channel	7.3
* Humbug Point Approaches	8.5
Humbug Point Berth	9.5
* Evans Landing	9.4
Lorim Point East	12.3
Lorim Point West	12.3

* Indicates revised entry

Chart temporarily affected - Aus 4 - AU5XX4P1**1328(P)/2009 AUSTRALIA - WESTERN AUSTRALIA - Broome - Nav aids to be established***Former Notice* - 1196(T)/2009 is cancelled*Date* - Until 26 November 2009

Broome Port Authority Notice 27/2009 (AA439256)

The east cardinal light buoy, VQ(3)5s, will be re-established in position 18° 00'.433 S 122° 12'.917 E.

A port lateral pillar light buoy, Oc.R.3s, will be established in position 18° 00'.666 S 122° 12'.502 E.

Chart which will be affected - Aus 50 - Aus 51**1329(T)/2009 AUSTRALIA - WESTERN AUSTRALIA - North Rankin - Scientific instruments***Former Notice* - 1256(T)/2008 is cancelled*Date* - Until 31 May 2010

MetOcean Engineers (AA438335)

Special light buoys, FI(5)Y.20s, exist in position 18° 45'.00 S 117° 02'.30 E and 19° 31'.43 S 117° 03'.21 E (WGS84 datum).

Chart temporarily affected - Aus 327 - Aus 415 - Aus 741 – Aus 4722 (INT 722) - AX 0415F – AX 4722F - AU130090

1330(P)/2009 AUSTRALIA - WESTERN AUSTRALIA - Rankin Bank to Dampier - Production wells; platform; pipeline established

Former Notice - 734(P)/2009 is cancelled

Date - Until 30 April 2010

Woodside Energy (AA439328 - AA439330, AA439357, AA439358)

A pipeline has been laid between:

<i>Position (WGS84 datum)</i>	<i>Remarks</i>
19° 54'.837 S 115° 07'.900 E	<i>Production Well</i>
19° 55'.829 S 115° 08'.586 E	
19° 56'.232 S 115° 09'.218 E	
19° 58'.031 S 115° 11'.243 E	
19° 59'.709 S 115° 21'.068 E	
19° 59'.718 S 115° 22'.053 E	
19° 59'.776 S 115° 22'.093 E	<i>Platform</i>
19° 59'.656 S 115° 22'.129 E	
19° 58'.642 S 115° 25'.433 E	
19° 59'.146 S 115° 26'.492 E	
20° 00'.513 S 115° 26'.978 E	
20° 02'.250 S 115° 28'.531 E	
20° 02'.724 S 115° 29'.477 E	
20° 02'.937 S 115° 31'.633 E	
20° 08'.176 S 115° 55'.137 E	
20° 10'.274 S 115° 59'.628 E	
20° 10'.278 S 116° 04'.570 E	
20° 12'.601 S 116° 23'.708 E	
20° 17'.185 S 116° 32'.153 E	
20° 18'.962 S 116° 40'.113 E	
20° 24'.479 S 116° 45'.944 E	
20° 26'.767 S 116° 46'.547 E	
20° 30'.541 S 116° 46'.337 E	
20° 31'.876 S 116° 45'.735 E	
20° 33'.078 S 116° 45'.640 E	
20° 35'.122 S 116° 44'.671 E	
20° 35'.481 S 116° 44'.727 E	
20° 36'.296 S 116° 45'.475 E	

A 0.5M exclusion zone exists on each side of the pipeline from the shore crossing to position 20° 24'.48 S 116° 45'.94 E.

Chart which will be affected - Aus 57 - Aus 58 - Aus 59 - Aus 327 - Aus 328 - Aus 415 - Aus 416 - Aus 741 - Aus 742 – AX 0415F - AU320115 - AU421115 - AU421116

1331(T)/2009 AUSTRALIA - WESTERN AUSTRALIA - Barrow Island - Seismic survey northwards completed

Former Notice - 174(T)/2009 is cancelled

Searcher Seismic Pty Ltd (AA382324, AA382326)

Cancel this notice on receipt.

Chart formerly affected - Aus 327 - Aus 328 - Aus 415 - Aus 416 – AX 0415F - AU320114

1332(T)/2009 AUSTRALIA - WESTERN AUSTRALIA - Exmouth Plateau - Seismic survey

Date - Until 18 December 2009

RPS Australia and South East Asia (AA438337, AA438338)

A SSV with a 6000m towed array will be conducting a survey in the area bounded by the following positions:

18° 50'.21 S 113° 20'.56 E
 18° 50'.57 S 113° 39'.88 E
 19° 09'.52 S 113° 39'.79 E
 19° 16'.00 S 113° 29'.49 E
 19° 09'.15 S 113° 20'.43 E.

Chart temporarily affected - Aus 415 - Aus 4708 (INT 708) – AX 0415F – AX 4708F - AU130090

20 November 2009

1333(T)/2009 AUSTRALIA - WESTERN AUSTRALIA - Thevenard Island to Ashburton Road - Scientific instruments*Former Notice* - 1250(T)/2009 is cancelled*Date* - Until 30 April 2010

MetOcean Engineers (AA434045)

Scientific instruments exist as follows:

<i>Position (WGS84 datum)</i>	<i>Remarks</i>
21° 21'.86 S 114° 51'.20 E	5 poly floats
21° 22'.08 S 114° 50'.91 E	lit buoy, <i>Fl(5)Y.20s</i>
21° 22'.08 S 114° 51'.00 E	5 poly floats
21° 29'.15 S 115° 00'.86 E	lit buoy, <i>Fl(5)Y.20s</i>
21° 29'.21 S 115° 00'.94 E	5 poly floats
21° 30'.12 S 115° 02'.92 E	lit buoy, <i>Fl(5)Y.20s</i>
21° 31'.40 S 114° 54'.90 E	lit buoy, <i>Fl(5)Y.20s</i>
21° 36'.30 S 115° 04'.94 E	lit buoy, <i>Fl(5)Y.20s</i>
21° 36'.30 S 115° 04'.75 E	5 poly floats
21° 39'.32 S 115° 00'.77 E	lit buoy, <i>Fl(5)Y.20s</i>

Chart temporarily affected - Aus 64 - Aus 328 - Aus 743 - Aus 744 - AU422114 - AU422115**1334(T)/2009 AUSTRALIA - WESTERN AUSTRALIA - Passage Island - Scientific instruments recovered***Former Notices* - 1249(T)/2009, 1294(T)/2009 are cancelled

MetOcean Engineers (AA438335)

Cancel this notice on receipt.

Chart formerly affected - Aus 327 - Aus 328 - Aus 743 - AU422115**1335(T)/2009 AUSTRALIA - WESTERN AUSTRALIA - North West Cape - Scientific instruments northwestwards***Former Notice* - 108(T)/2009 is cancelled

MetOcean Engineers (AA438335)

Scientific instruments exist as follows:

<i>Position (WGS84 datum)</i>	<i>Remarks</i>
21° 30'.80 S 114° 00'.85 E	special buoy with 5 white poly-floats
21° 30'.93 S 114° 00'.91 E	lit buoy, <i>Fl(5)Y.20s</i>

Chart temporarily affected - Aus 328 - Aus 329 - Aus 415 - Aus 416 - Aus 744 - Aus 4708 (INT 708) – AX 0415F – AX 4708F - AU130090 - AU422114**1336(T)/2009 AUSTRALIA - WESTERN AUSTRALIA - Alkimos Reef - Scientific instruments recovered***Former Notice* - 272(T)/2009 is cancelled

MetOcean Engineers (AA439499)

Cancel this notice on receipt.

Chart formerly affected - Aus 334 - Aus 754 – AX 0334E – AX 0754E – AX 66002 - AU432115**1337(T)/2009 AUSTRALIA - WESTERN AUSTRALIA - Alkimos Reef - Scientific instrument***Date* - Until 30 April 2010

Cardo Lawson Treloar (AA439271)

A special light buoy, *Fl(5)Y.20s*, exists in position 31° 37'.71 S 115° 38'.08 E.**Chart temporarily affected - Aus 334 - Aus 754 – AX 0334E – AX 0754E – AX 66002 - AU432115**

1338(T)/2009 AUSTRALIA - WESTERN AUSTRALIA - Fremantle - Dredging operations completed

Former Notice - 452(T)/2009 is cancelled
Fremantle Port Authority (AA439446)

Cancel this notice on receipt.

Chart formerly affected - Aus 112 - Aus 113 - AU5XX113

1339(T)/2009 AUSTRALIA - WESTERN AUSTRALIA - Cockburn Sound - James Point - Scientific instruments recovered

Former Notice - 745(T)/2007 is cancelled
Fremantle Port Authority (AA439446)

Cancel this notice on receipt.

Chart formerly affected - Aus 114

1340(T)/2009 AUSTRALIA - WESTERN AUSTRALIA - Eclipse Island to Esperance Canyon - Seismic survey

Date - Until 8 January 2010
Enovation Resources (AA439457, AA439458)

MV *Aquila Explorer* with an 8000m towed array and support vessel *Empress*, will be conducting a survey in the area bounded by the following positions (WGS84 datum):

35° 40'.90 S 118° 26'.62 E
34° 54'.00 S 121° 36'.13 E
34° 34'.58 S 121° 35'.75 E
34° 19'.62 S 121° 00'.33 E
34° 28'.10 S 119° 39'.78 E
34° 06'.63 S 118° 09'.42 E
35° 16'.27 S 118° 00'.00 E.

Chart temporarily affected - Aus 118 - Aus 336 - Aus 337 - Aus 752 - Aus 759 - Aus 762 – Aus 4709 (INT 709) - Aus 4726 (INT 726) - Aus 4727 (INT 727) - AX 0118E - AU160090 - AU160120 - AU335120 - AU335121 - AU336119 - AU336120 - AU436118

1341(T)/2009 AUSTRALIA - TASMANIA - Storm Bay - Scientific instruments

Date - Until 31 March 2010
Marine and Safety Tasmania Notice M164/2009 (AA439572)

Subsurface scientific instruments exist in positions (WGS84 datum):

43° 10'.29 S 147° 32'.09 E
43° 18'.00 S 147° 39'.60 E
43° 18'.00 S 147° 39'.70 E.

Chart temporarily affected - Aus 795 - Aus 796 - AU444147

1342(T)/2009 AUSTRALIA - TASMANIA - River Tamar - Dredging operations

Date - Until 22 January 2010
Marine and Safety Tasmania Notice M149/2009 (AA439343, AA439344)

Dredging operations are in progress in the River Tamar, in the vicinity of 41° 25'.81 S 147° 07'.43 E.

White buoys and lit pontoons mark a discharge pipeline, extending westwards from the dredge. The pipeline is not to be crossed during the operations.

Chart temporarily affected - Aus 168 - AU5167X8

1343(T)/2009 AUSTRALIA - VICTORIA - Port Phillip - Great Ship Channel - Diving operations completed

Former Notice - 1143(T)/2009 is cancelled
Victorian Notice 127(T)/2009 (AA430202)

Cancel this notice on receipt.

Chart formerly affected - Aus 143 - Aus 144 - Aus 158 - AU439144**1344(T)/2009 AUSTRALIA - VICTORIA - Port Melbourne - Port Phillip - Dredging operations**

Date - Until 30 April 2011
Victorian Notice 156(T)/2009 (AA439003)

A dredge and barge are conducting dredging operations in the Port of Melbourne at the following locations:

Port Melbourne Channel leading to Station Pier (37° 51'.6 S 144° 55'.7 E) and
Station Pier berths and swing basin (37° 50'.8 S 144° 55'.8 E)

Ann St Pier (37° 51'.6 S 144° 54'.6 E)

Webb Dock (37° 50'.7 S 144° 54'.4 E)

Maribyrnong River (37° 49'.0 S 144° 54'.3 E)

River Yarra berths and approaches (37° 49'.1 S 144° 55'.2 E).

The dredge material will be deposited at the Port of Melbourne spoil ground (38° 00'.5 S 144° 53'.0 E).

Updated information on the daily dredging schedule can be obtained from Melbourne VTS on VHF Ch 12.

Mariners are advised to navigate with caution in the area.

Chart temporarily affected - Aus 154 - Aus 155 - AU5XX154**1345(T)/2009 AUSTRALIA - VICTORIA - Port Phillip - Sorrento - Obstruction**

Victorian Notice 154(T)/2009 (AA438083)

An obstruction marked by buoys exists in position 38° 19'.98 S 144° 44'.54 E. Salvage operations are in progress and a 500m exclusion zone exists around the obstruction.

Mariners are advised to navigate with caution in the area.

Chart temporarily affected - Aus 143 - Aus 144 - Aus 158 - AU5143P5**1346(T)/2009 AUSTRALIA - VICTORIA - Western Port - Wonthaggi - Scientific instrument**

Date - Until 30 April 2011
Cardno Lawson Treloar (AA439271)

A special light buoy, *Fl(5)Y.20s*, exists in position 38° 36'.16 S 145° 30'.84 E.

Chart temporarily affected - Aus 150 - Aus 801 - AU439145

HYDROGRAPHIC REPORTS

<i>Locality</i>	<i>Report</i>	<i>Ship/Authority</i>	<i>Observer</i>
QLD- Booby Island	Flagstaff	HMAS <i>Leeuwin</i>	
PNG- Jomard Passage	Wreck	Voyage Management Systems Pty Ltd	WG Cray

NAVIGATION WARNINGS

The following radio messages have been received during the period to 20 November 2009. Signal copies of these messages may be destroyed. It is recommended that the reprint of Navigational Warnings should be kept in a file or a book divided into areas. Cancellation should be made on receipt of signals and reprints.

Rigs on location other than those listed in the latest Section III summary are the subject of Radio Navigational Warnings. Rigs in transit will not be the subject of Warnings.

AUSCOAST WARNING

- 261 Cancelled.
 262 Cancelled.
 263 Cancelled.
 264 Cancelled.
 265 Cancelled.
 266 Cancelled.
 267 Cancelled.
 268 Special purpose vessel *Aquila Explorer* conducting seismic survey towing 4.5M cable in area bounded by 22° 42'·1 S to 26° 27'·5 S and 110° 52'·0 E to 113° 27'·0 E. 7M clearance requested.
 269 Drill rig *Jack Bates* in position 20° 13'·30 S 113° 41'·36 E. 2.5M clearance requested.
 270 Cancelled.
 271 Cancelled.
 272 Special purpose vessel *Geo Atlantic* conducting seismic survey in area bounded by 14° 55'·0 S 122° 12'·0 E to 15° 40'·0 S 121° 37'·0 E. 6M clearance requested.
 273 Drill rig *Ensco 7500* in position 19° 41'·6 S 113° 55'·1 E. 2.5M clearance requested.

NAVAREA X WARNINGS

- 019 Cancelled.

Navigational warnings in force as at 200001UTC NOV 09.**Auscoast**

128 188 191 214 216 231 239 243 245 246 255 257 268 269 272 273

Navarea X

Nil.

Summary of mobile drilling rigs as at 200001UTC NOV 09.

<i>Name</i>	<i>Position</i>
Ocean Patriot	39° 20'·37 S 142° 44'·56 E
Kan Tan IV	39° 53'·07 S 145° 22'·14 E
Ocean Shield	10° 53'·58 S 126° 44'·35 E
Songa Venus	11° 37'·48 S 125° 01'·36 E
West Triton	12° 41'·34 S 124° 31'·83 E
Transocean Legend	13° 40'·07 S 122° 16'·32 E
Nan Hai 6	19° 35'·50 S 116° 26'·10 E
Atwood Eagle	19° 54'·48 S 115° 07'·55 E
Songa Mercur	19° 55'·70 S 115° 14'·90 E
Ensco 7500	19° 41'·60 S 113° 55'·10 E
Jack Bates	20° 13'·30 S 113° 41'·36 E
Ocean Epoch	21° 32'·70 S 114° 05'·69 E

NAVAREA XIV WARNINGS

055 Cancelled.

056 Cancelled.

057 Cancelled.

058 Cancelled.

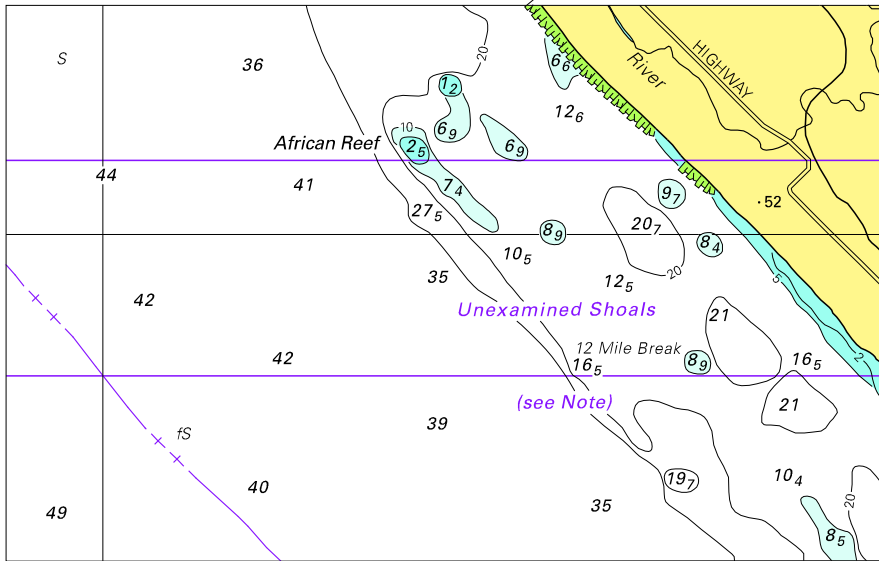
059 South Pacific. Voluntary ship reporting system in the New Zealand search and rescue area south of 60° S. The New Zealand Search and Rescue Authorities have established a voluntary ship reporting system for all vessels operating in the NZSAR Region south of 60° S for the purposes of assisting the SAR authority in coordinating SAR operations in that area. Area covered: 60°S to the southern edge of the Ross Sea bounded by 163°E to 131°W. All vessels are requested to notify Taupo Maritime Radio on entry and departure into the area and are also encouraged to make daily position reports. Information provided will be used for SAR purposes only. Taupo Maritime Radio can be contacted on Inmarsat C 582 451 200 067, HF, email maritime@kordia.co.nz or 00 64 4 914 8333.

060 Cancelled.

Navarea XIV warnings in force as at 200001UTC NOV 09.

059

To accompany Australian Notice to Mariners 1312/2009

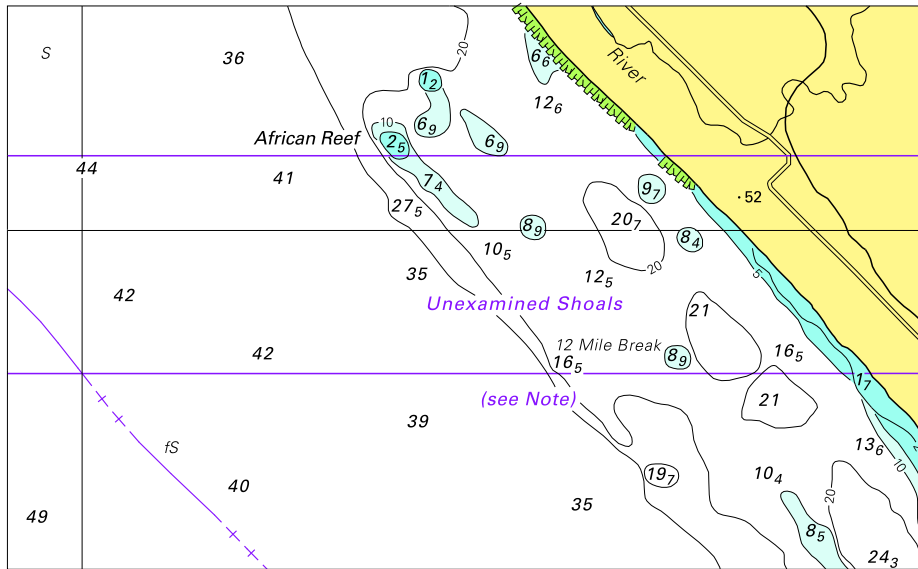


Block for chart Aus 332

© Commonwealth of Australia 2009

(116.3 x 73.4mm)

To accompany Australian Notice to Mariners 1312/2009

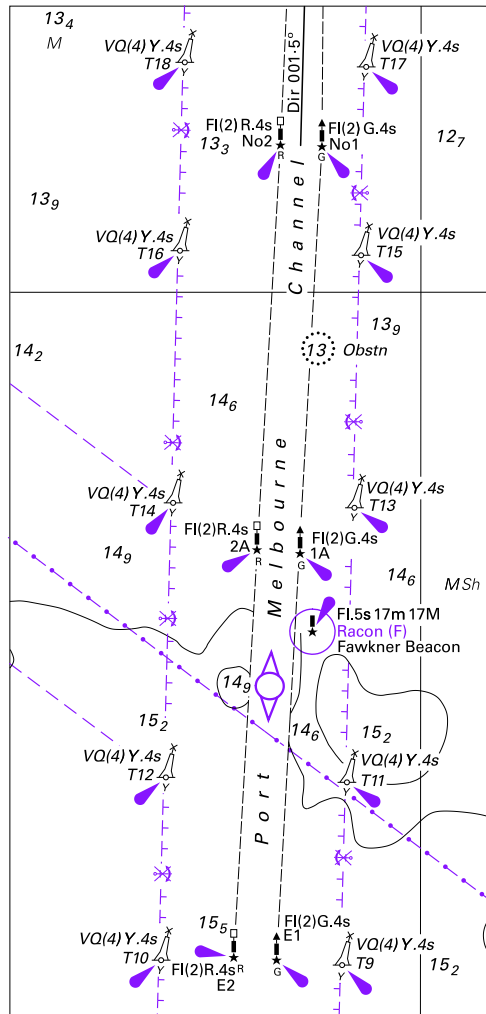


Block for chart Aus 333

© Commonwealth of Australia 2009

(121.6 x 74.5mm)

To accompany Australian Notice to Mariners 1318/2009



© Commonwealth of Australia 2009
 Block for chart Aus 155 (133.7 x 64.0mm)