




6 November 2009

Edition 22

Australian Notices to Mariners are the authority for correcting Australian Charts and Publications

AUSTRALIAN NOTICES TO MARINERS

Notices 1255 – 1303 

Published fortnightly by the Australian Hydrographic Service

Commodore R. NAIRN RAN
Hydrographer of Australia

SECTIONS.

- I. **Australian Notices to Mariners, including blocks and notes.**
- II. **Hydrographic Reports.**
- III. **Navigational Warnings.**

SUPPLEMENTS.

- I. **Tracings**
- II. **Cumulative List of Australian Notices to Mariners.**
- III. **Temporary and Preliminary Notices in force.**
- IV. **Amendments to Admiralty List of Lights and Fog Signals (Vol K),
Radio Signals (NP 281(2), 282, 283(2), 285, 286(4)) and Sailing
Directions (NP 9, 13, 14, 15, 33, 34, 35, 36, 39, 44, 51, 60, 61, 62, 100, 136).**

© Commonwealth of Australia 2009

This work is copyright. Apart from any use permitted under the Copyright Act 1968, no part may be reproduced by any process, adapted, communicated or commercially exploited without prior written permission from The Commonwealth represented by the Australian Hydrographic Service.

IMPORTANT NOTICE

This edition of Notices to Mariners includes all significant information affecting AHS products which the AHS has become aware of since the last edition. All reasonable efforts have been made to ensure the accuracy and completeness of the information, including third party information, on which these updates are based. The AHS regards third parties from which it receives information as reliable, however the AHS cannot verify all such information and errors may therefore exist. The AHS does not accept liability for errors in third party information.

GENERAL INSTRUCTIONS

The substance of these notices should be inserted on the charts affected.

Bearings are referred to the true compass and are reckoned clockwise from North; those relating to lights are given as seen by an observer from seaward. Positions quoted in permanent notices relate to the horizontal datum for the chart(s). When preliminary or temporary notices affect multiple charts, positions will be provided in relation to only one horizontal datum and that datum will be specified. When the multiple charts do not have a common horizontal datum, mariners will be required to adjust the position(s) for those charts not on the specified datum. The range quoted for a light is its nominal range. Depths are with reference to the chart datum of each chart. Heights are above mean high water springs or mean higher high water, as appropriate.

The capital letter (P) or (T) after the number of any notice denotes a preliminary or temporary notice respectively, which are contained separately at the end of the permanent notices. A star (*) adjacent to the number of a notice indicates that the notice is based on original information.

REPORTING OF DANGERS

Mariners are particularly requested to notify the AUSTRALIAN HYDROGRAPHIC SERVICE, Locked Bag 8801 Wollongong, NSW 2500 (Fax 02-4223 6599, e-mail Hydro.NTM@defence.gov.au or, alternatively by filling in and submitting the [Hydrographic Notes](#) forms located on the web site – www.hydro.gov.au), immediately on the discovery of new dangers or suspected dangers to navigation. For changes or defects in aids to navigation notify AusSAR (Fax 02-6230 6868 or email rccaus@amsa.gov.au).

AUTHORISED USE

Copies of Australian notices are available free of charge from the Australian Hydrographic Service (AHS) website (www.hydro.gov.au) and through the eNotices (email) service (www.hydro.gov.au/enotices/enotices.htm).

Individual Notices may be copied for the purpose of inserting Notice substance on official charts and publications. Paper copies may be printed by chart agents and distributed to customers on a cost recovery basis. Participating chart agents are listed on the AHS website as providing a 'Paper Notices to Mariners' service (www.hydro.gov.au/prodserv/distributors/distributors.htm). Copies of the notices may not be sold for profit without prior written agreement.

NUMERICAL INDEX OF NOTICES TO MARINERS

Edition No 22

Notices	Aus Chart, INT Chart, ENC Cell
1255.....	Aus 84, 332, 333, 752, 753, 920, AU434136, 443145
1256.....	Aus 193, AX 70193
1257.....	Aus 216
1258.....	Aus 219
1259.....	Aus 219
1260.....	Aus 222
1261.....	Aus 244, 245
1262.....	Aus 366, 367, 426, 820, AX 0367E, 0820E
1263.....	Aus 247, 819, 820, AX 0820E
1264.....	Aus 251, 824
1265.....	Aus 616, 4603, 4604, 4620, INT 603, 604, 620, AX 4603F, 4604F, 4620F
1266.....	Aus 292, 293
1267.....	Aus 652
1268.....	Aus 376, AX 66003
1269.....	Aus 26, 722, AX 72026, 72722
1270.....	Aus 739, 740
1271.....	Aus 743
1272.....	Aus 328, 744
1273.....	Aus 122
1274.....	Aus 143, 144, 349, 422, 487, 788
1275.....	Aus 143, 144, 154, 155, 157, 158
1276.....	Aus 143
1277.....	Aus 155
1278.....	Aus 152
1279.....	Aus 181, 182
1280.....	Aus 4060, 4604, INT 60, 604, AX 4604F
1281(T).....	Aus 194, AU5XX194
1282(T).....	Aus 207, 208, AU5XX208
1283(T).....	Aus 244, 245, 819, AU424151, 5244X5
1284(T).....	Aus 260, 367, 820, 822, AX 0260E, 0367E, 0820E, 0822E, 60260, AU423150
1285(T).....	Aus 257, AU5XX257
1286(T).....	Aus 256, 257, AU5XX257
1287(T).....	Aus 256, 257, AU5XX257
1288(T).....	Aus 827, 828, AU419146
1289(T).....	Aus 263, AU5262X4
1290(T).....	Aus 289, 296, 301, 376, 700, AU411141
1291(T).....	Aus 319, AX 0319F, AU314123
1292(T).....	Aus 43, 322, AX 0322F, AU315121
1293(T).....	Aus 57, 58, 59, 327, 328, 741, 742, AU421115, 421116, 5XXX58
1294(T).....	Aus 327, 328, 743, AU422115
1295(T).....	Aus 327, 328, 415, 416, AX 0415F, AU320114
1296(T).....	Aus 329, 415, 416, 4708, INT 708, AX 0415F, 4708F, AU130090
1297(T).....	Aus 171
1298(T).....	Aus 154, 155, AU438144, 5XX154
1299(T).....	Aus 143, 155, AU439145
1300(T).....	Aus 801, AU439145
1301(T).....	Aus 181, 182, AU439146
1302(T).....	Aus 181, AU439146
1303(T).....	Aus 181, 182, AU439146

NUMERICAL INDEX OF CHARTS AFFECTED

Edition No 22

Aus Chart	Notices	Aus Chart	Notices
Aus 26	1269	Aus 741	1293(T)
Aus 43	1292(T)	Aus 742	1293(T)
Aus 57	1293(T)	Aus 743	1271, 1294(T)
Aus 58	1293(T)	Aus 744	1272
Aus 59	1293(T)	Aus 788	1274
Aus 122	1273	Aus 801	1300(T)
Aus 143	1274, 1275, 1276, 1299(T)	Aus 819	1263, 1283(T)
Aus 144	1274, 1275	Aus 820	1262, 1263, 1284(T)
Aus 152	1278	Aus 822	1284(T)
Aus 154	1275, 1298(T)	Aus 824	1264
Aus 155	1275, 1277, 1298(T), 1299(T)	Aus 827	1288(T)
Aus 157	1275	Aus 828	1288(T)
Aus 158	1275	Aus 4060	1280
Aus 171	1297(T)	Aus 4603	1265
Aus 181	1279, 1301(T), 1302(T), 1303(T)	Aus 4604	1265, 1280
Aus 182	1279, 1301(T), 1303(T)	Aus 4620	1265
Aus 193	1256	Aus 4708	1296(T)
Aus 194	1281(T)	AX 0260E	1284(T)
Aus 207	1282(T)	AX 0319F	1291(T)
Aus 208	1282(T)	AX 0322F	1292(T)
Aus 216	1257	AX 0367E	1262, 1284(T)
Aus 219	1258, 1259	AX 0415F	1295(T), 1296(T)
Aus 222	1260	AX 0820E	1262, 1263, 1284(T)
Aus 244	1261, 1283(T)	AX 0822E	1284(T)
Aus 245	1261, 1283(T)	AX 4603F	1265
Aus 247	1263	AX 4604F	1265, 1280
Aus 251	1264	AX 4620F	1265
Aus 256	1286(T), 1287(T)	AX 4708F	1296(T)
Aus 257	1285(T), 1286(T), 1287(T)	AX 60260	1284(T)
Aus 260	1284(T)	AX 66003	1268
Aus 263	1289(T)	AX 70193	1256
Aus 289	1290(T)	AX 72026	1269
Aus 292	1266	AX 72722	1269
Aus 293	1266		
Aus 296	1290(T)		
Aus 301	1290(T)		
Aus 319	1291(T)		
Aus 322	1292(T)		
Aus 327	1293(T), 1294(T), 1295(T)		
Aus 328	1272, 1293(T), 1294(T), 1295(T)		
Aus 329	1296(T)		
Aus 332	1255		
Aus 333	1255		
Aus 349	1274		
Aus 366	1262		
Aus 367	1262, 1284(T)		
Aus 376	1268, 1290(T)		
Aus 415	1295(T), 1296(T)		
Aus 416	1295(T), 1296(T)		
Aus 422	1274		
Aus 426	1262		
Aus 487	1274		
Aus 616	1265		
Aus 652	1267		
Aus 700	1290(T)		
Aus 722	1269		
Aus 739	1270		
Aus 740	1270		
INT Chart		INT Chart	Notices
		INT 60	1280
		INT 603	1265
		INT 604	1265, 1280
		INT 620	1265
		INT 708	1296(T)

ENC Cell	Notices
AU130090	1296(T)
AU314123	1291(T)
AU315121	1292(T)
AU320114	1295(T)
AU411141	1290(T)
AU419146	1288(T)
AU421115	1293(T)
AU421116	1293(T)
AU422115	1294(T)
AU423150	1284(T)
AU424151	1283(T)
AU434136	1255
AU438144	1298(T)
AU439145	1299(T), 1300(T)
AU439146	1301(T), 1302(T), 1303(T)
AU443145	1255
AU5XX58	1293(T)
AU5XX154.....	1298(T)
AU5XX194.....	1281(T)
AU5XX208.....	1282(T)
AU5244X5	1283(T)
AU5XX257.....	1285(T), 1286(T), 1287(T)
AU5262X4	1289(T)

1255 AUSTRALIA - Product

Australian Hydrographic Service (AA428525, AA437656)

New Edition

<i>Chart</i>	<i>Published</i>	<i>Title and description of amendments</i>	<i>Scale</i>	<i>Index Chart</i>	<i>Price</i>
Aus 332	25/9/2009	Australia - West Coast - Western Australia - Zuytdorp Point to Geraldton 26° 19' 49" S - 29° 06' 57" S 112° 50' 04" E - 114° 48' 51" E <i>New edition referred to WGS84 datum and updated for maritime boundaries.</i>	1:300 000	Aus 5001	\$35.00
Aus 333	25/9/2009	Australia - West Coast - Western Australia - Geraldton to Wedge Island 28° 31' 17" S - 31° 14' 56" S 113° 31' 20" E - 115° 30' 06" E <i>New edition referred to WGS84 datum and updated for maritime boundaries.</i>	1:300 000	Aus 5001	\$35.00

New Electronic Navigation Chart (Seafarer ENC)

<i>Cell Name</i>	<i>Released</i>	<i>Title</i>
AU434136	November 2009	South Australia - Arno Bay to Franklin Harbour
AU443145	November 2009	Tasmania West Coast - Macquarie Harbour to Low Rocky Point

Chart permanently withdrawn

<i>Chart</i>	<i>On publication of new edition</i>
Aus 332	Aus 332
Aus 333	Aus 333

Note: the published date for new chart Aus 84 and new editions Aus 752, 753 and 920 in Edition 19 NTM 1091/2009 was incorrect and should read 14/8/2009.

For further details refer to the AHS website at www.hydro.gov.au for new edition and new chart stock arrival information.

When placing orders with a chart agent, mariners should advise whether their order pertains to the current edition or the new edition.

1256* AUSTRALIA - NEW SOUTH WALES - Huskisson - Beacon withdrawn; buoy established

NSW Maritime (AA435654, AA435655, AA435662)

Aus 193 (plan, Huskisson) [1217/2008]

Substitute	port lateral cylindrical buoy, without topmark for beacon	35° 02'.21 S	150° 40'.24 E
------------	---	--------------	---------------

AX 70193 (plan, Huskisson) [1217/2008]

Substitute	port lateral cylindrical buoy, without topmark for beacon	35° 02'.21 S	150° 40'.24 E
------------	---	--------------	---------------

1257* AUSTRALIA - NEW SOUTH WALES - Broken Bay - Light buoys repositioned

NSW Maritime (AA431404, AA431405, AA436258)

Aus 216 [283/2009]

Move	light buoy	33° 31'.51 S	151° 20'.28 E
	to	33° 31'.495 S	151° 20'.230 E
	light buoy	33° 31'.78 S	151° 20'.42 E
	to	33° 31'.778 S	151° 20'.396 E

1258* AUSTRALIA - NEW SOUTH WALES - Camden Haven - Light buoys established

NSW Maritime (AA431404, AA431405, AA437068)

Aus 219 (plan, Camden Haven) [932/2009]

Insert	east cardinal cylindrical light buoy, Q(3)10s, with topmark	31° 38'.846 S	152° 48'.244 E
	starboard lateral conical light buoy, Fl.G.5s, without topmark	31° 38'.882 S	152° 48'.176 E
Delete	buoy	31° 38'.85 S	152° 48'.25 E
	buoy	31° 38'.80 S	152° 48'.26 E

1259* AUSTRALIA - NEW SOUTH WALES - Hastings River - Limeburners Creek - Beacon repositioned

NSW Maritime (AA435271, AA435272)

Aus 219 (plan, Hastings River) [1258/2009]

Move	beacon	31° 24'.09 S	152° 53'.27 E
	to	31° 24'.165 S	152° 53'.290 E

1260* AUSTRALIA - NEW SOUTH WALES - Clarence River - Nav aids

NSW Maritime (AA435271, AA435272, AA431404, AA431405)

Aus 222 [NC 27/3/2009]

Insert	port lateral cylindrical buoy, without topmark	29° 23'.982 S	153° 20'.418 E
	starboard lateral beacon, with topmark	29° 24'.706 S	153° 19'.782 E

1261* AUSTRALIA - QUEENSLAND - Gladstone - Maritime boundaries; chart notes

Australian Hydrographic Service (AA434887, AA434888)

Aus 244 (plan, Entrance to North Channel) [987/2009]

Insert	restricted area limit, with legend <i>Gladstone Security/Port Limit</i> , between	23° 45'.070 S	151° 20'.833 E
		23° 44'.067 S	151° 19'.505 E
	marine reserve limit, between	23° 45'.747 S	151° 20'.276 E
		23° 45'.747 S	151° 20'.486 E
		23° 44'.748 S	151° 20'.486 E
		23° 44'.748 S	151° 18'.983 E
		23° 44'.067 S	151° 18'.471 E
	PSSA limit, with legend <i>GBRMP</i> (see Note), between	23° 45'.346 S	151° 19'.798 E
		23° 45'.317 S	151° 18'.640 E
	magenta dashed line, with legend <i>Pilotage Limit</i> , between	23° 44'.067 S	151° 20'.650 E
		23° 44'.140 S	151° 20'.833 E
	accompanying note in N border	23° 44'.1 S	151° 19'.0 E

1261* AUSTRALIA - QUEENSLAND - Gladstone - Maritime boundaries; chart notes (continued)**Aus 245 [1151/2009]**

Insert	magenta dashed line, with legend <i>Gladstone Pilotage Limit</i> , between	23° 45'.393 S	151° 24'.067 E
		23° 44'.817 S	151° 22'.561 E
restricted area limit, with legend <i>Gladstone Security/Port Limit</i> , between	between	23° 47'.454 S	151° 24'.067 E
		23° 44'.817 S	151° 20'.504 E
		23° 51'.999 S	151° 23'.534 E
		23° 51'.997 S	151° 23'.988 E
		23° 48'.498 S	151° 23'.988 E
		23° 48'.498 S	151° 22'.986 E
marine reserve limit, between	between	23° 47'.496 S	151° 21'.985 E
		23° 47'.498 S	151° 20'.788 E
		23° 45'.747 S	151° 20'.276 E
		23° 45'.747 S	151° 20'.486 E
PSSA limit, with legend <i>GBRMP (see Note)</i> , between	between	23° 44'.817 S	151° 20'.486 E
		23° 52'.521 S	151° 23'.331 E
		23° 52'.242 S	151° 24'.067 E
PSSA limit, with legend <i>GBRMP (see Note)</i> , between	between	23° 45'.346 S	151° 19'.798 E
		23° 45'.317 S	151° 18'.640 E
		23° 53'.1 S	151° 10'.0 E
accompanying O note		23° 52'.8 S	151° 10'.9 E
accompanying GBRMP note			

1262* AUSTRALIA - QUEENSLAND - Johnson Patch to Moresby Bank - DepthsHMAS *Benalla* & *Shepparton* (DHDB 1284004)**Aus 366 [1093/2009]**

Insert	depth, <i>16fm</i> , enclosed by contour	23° 04'.50 S	151° 30'.24 E
	depth, <i>14fm</i> , enclosed by contour	23° 01'.11 S	151° 34'.98 E
Substitute	depth, <i>8₅fm</i> , for depth, 11fm	23° 05'.5 S	151° 33'.0 E

Aus 367 [696/2009]

Insert	depth, <i>29₄m</i> , enclosed by contour	23° 04'.40 S	151° 30'.22 E
	depth, <i>26₇m</i> , enclosed by contour	23° 01'.01 S	151° 34'.96 E
	depth, <i>33m</i>	22° 55'.61 S	151° 36'.94 E
	sounding out of position, <i>41m</i> , enclosed by contour	22° 57'.04 S	151° 45'.96 E
	sounding out of position, <i>44m</i> , enclosed by contour	22° 57'.20 S	151° 47'.70 E
	depth, <i>16₇m</i> , enclosed by contour	23° 05'.56 S	151° 32'.95 E
Delete	depth, <i>20₄m</i> , and enclosing contour	23° 05'.6 S	151° 33'.0 E

Aus 426 [751/2009]

Insert	depth, <i>14fm</i> , enclosed by contour	23° 01'.0 S	151° 35'.0 E
Substitute	depth, <i>8₅fm</i> for depth, 11fm	23° 05'.6 S	151° 33'.0 E
Delete	depth, <i>26fm</i>	23° 01'.0 S	151° 38'.0 E

1262* AUSTRALIA - QUEENSLAND - Johnson Patch to Moresby Bank – Depths (continued)

Aus 820 [988/2009]

Insert	depth, 29m, enclosed by contour	23° 04'.40 S	151° 30'.22 E
	depth, 36m	22° 59'.72 S	151° 31'.42 E
	depth, 26 ₃ m, enclosed by contour	23° 01'.01 S	151° 34'.96 E
	depth, 33m	22° 55'.61 S	151° 36'.94 E
	depth, 40m, and extend contour SE to enclose	22° 55'.52 S	151° 44'.23 E
	depth, 40m, enclosed by contour	22° 57'.04 S	151° 45'.96 E
	depth, 44m, enclosed by contour	22° 57'.20 S	151° 47'.70 E
	depth, 19 ₂ m, enclosed by contour	23° 05'.21 S	151° 31'.99 E
Substitute	depth, 44m, for depth, 49m	22° 55'.3 S	151° 39'.6 E
Delete	depth, 43m	22° 59'.5 S	151° 31'.8 E
	depth, 39m	23° 00'.9 S	151° 34'.6 E
	depth, 47m	22° 55'.3 S	151° 44'.2 E
	depth, 58m	22° 57'.0 S	151° 48'.1 E
	depth, 28 ₅ m	23° 05'.0 S	151° 32'.3 E

AX 0367E [NE 19/6/2009]

Insert	depth, 29 ₄ m, enclosed by contour	23° 04'.40 S	151° 30'.22 E
	depth, 26 ₇ m, enclosed by contour	23° 01'.01 S	151° 34'.96 E
	depth, 33m	22° 55'.61 S	151° 36'.94 E
	sounding out of position, 41m, enclosed by contour	22° 57'.04 S	151° 45'.96 E
	sounding out of position, 44m, enclosed by contour	22° 57'.20 S	151° 47'.70 E
	depth, 16 ₇ m, enclosed by contour	23° 05'.56 S	151° 32'.95 E
Delete	depth, 20 ₄ m, and enclosing contour	23° 05'.6 S	151° 33'.0 E

AX 0820E [988/2009]

Insert	depth, 29m, enclosed by contour	23° 04'.40 S	151° 30'.22 E
	depth, 36m	22° 59'.72 S	151° 31'.42 E
	depth, 26 ₃ m, enclosed by contour	23° 01'.01 S	151° 34'.96 E
	depth, 33m	22° 55'.61 S	151° 36'.94 E
	depth, 40m, and extend contour SE to enclose	22° 55'.52 S	151° 44'.23 E
	depth, 40m, enclosed by contour	22° 57'.04 S	151° 45'.96 E
	depth, 44m, enclosed by contour	22° 57'.20 S	151° 47'.70 E
	depth, 19 ₂ m, and extend contour S to enclose	23° 05'.21 S	151° 31'.99 E
Substitute	depth, 44m, for depth, 49m	22° 55'.3 S	151° 39'.6 E
Delete	depth, 43m	22° 59'.5 S	151° 31'.8 E
	depth, 39m	23° 00'.9 S	151° 34'.6 E
	depth, 47m	22° 55'.3 S	151° 44'.2 E
	depth, 58m	22° 57'.0 S	151° 48'.1 E
	depth, 28 ₅ m	23° 05'.0 S	151° 32'.3 E

1263* AUSTRALIA - QUEENSLAND - Halfway Island - Rock
 HMAS *Benalla* & *Shepparton* (DHDB 1284004)

Aus 247 [1093/2009]

Insert rock which covers and uncovers, enclosed by danger circle with legend (*Q₅*) 23° 12'.13 S 150° 58'.09 E

Delete under water rock and enclosing danger circle, with legend Rep(1990) 23° 12'.1 S 150° 58'.1 E

Aus 819 [1093/2009]

Substitute rock which covers and uncovers for underwater rock 23° 12'.1 S 150° 58'.1 E

Aus 820 [1262/2009]

Substitute rock which covers and uncovers for underwater rock 23° 12'.1 S 150° 58'.1 E

AX 0820E [1262/2009]

Substitute rock which covers and uncovers for underwater rock 23° 12'.1 S 150° 58'.1 E

1264* AUSTRALIA - QUEENSLAND - Carlisle Island - Historic wreck
 Australian Hydrographic Service (AA435229), T Jackson (AA435230)

Aus 251 [819/2009]

Insert stranded wreck, with magenta legend *Historic Wk* (*see Note*) 20° 46'.73 S 149° 16'.62 E

Aus 824 [1216/2009]

Insert stranded wreck, with magenta legend *Historic Wk* (*see Note*) 20° 46'.73 S 149° 16'.62 E

1265* AUSTRALIA - CORAL SEA - Shark Reef - Depths
 LADS Flight (AA436109)

Aus 616 (plan, Osprey Reef and Shark Reef) [534/2009]

Delete depth, 10m, and enclosing contour 14° 09'.9 S 146° 49'.2 E

Aus 4603 (INT 603) [1160/2009]

Substitute depth, 11m, for depth, 14m 14° 16'.0 S 146° 54'.0 E

Aus 4604 (INT 604) [1217/2009]

Substitute depth, 11m, for depth, 14m 14° 16'.0 S 146° 54'.0 E

Aus 4620 (INT 620) [992/2009]

Substitute depth, 11₅m, for depth, 14₅m 14° 16'.0 S 146° 54'.0 E
 depth, 8₁m, for depth, 7₈m 14° 07'.0 S 146° 48'.0 E

AX 4603F [1160/2009]

Substitute depth, 11m, for depth, 14m 14° 16'.0 S 146° 54'.0 E

AX 4604F [1217/2009]

Substitute depth, 11m, for depth, 14m 14° 16'.0 S 146° 54'.0 E

AX 4620F [992/2009]

Substitute depth, 8₁m, for depth, 7₈m 14° 07'.0 S 146° 48'.0 E
 depth, 11₅m, for depth, 14₅m 14° 16'.0 S 146° 54'.0 E

1266* AUSTRALIA - TORRES STRAIT - Prince of Wales Channel - DepthsHMAS *Leeuwin* (DHDB 1310501)**Aus 292** [990/2009]Insert depth, 9₈m, enclosed by contour 10° 28'.81 S 142° 21'.92 E

Delete 10m contour, centred on 10° 30'.3 S 142° 21'.4 E

Aus 293 [1096/2009]Insert depth, 9₈m, enclosed by contour 10° 28'.897 S 142° 21'.864 Edepth, 10₅m, 10° 30'.370 S 142° 21'.364 EDelete depth, 10₆m 10° 28'.95 S 142° 21'.84 E

depth, 10m, and enclosing contour 10° 30'.35 S 142° 21'.36 E

depth, 10₁m 10° 30'.36 S 142° 21'.29 E**1267* PAPUA NEW GUINEA - Vanimo Harbour - Infrastructure; coastline**

DIGO (AA430514)

Aus 652 (plan, Vanimo Harbour) [NC 15/2/2008]

Insert accompanying block 2° 40'.5 S 141° 17'.3 E

1268* AUSTRALIA - TORRES STRAIT - Deliverance Island to Kerr Island - Height

Department of Defence (AA436091)

Aus 376 [1097/2009]

Amend legend to (3) 9° 31'.5 S 141° 35'.0 E

legend to (3) 9° 36'.7 S 141° 32'.8 E

AX 66003 [143/2009]

Amend legend to (3) 9° 31'.4 S 141° 34'.7 E

legend to (3) 9° 36'.8 S 141° 32'.9 E

1269* AUSTRALIA - NORTHERN TERRITORY - Darwin - Middle Pass - Light buoys withdrawn

Darwin Port Corporation (AA436150)

Aus 26 [1098/2009]

Delete light buoy 12° 20'.9 S 130° 42'.9 E

light buoy 12° 21'.2 S 130° 43'.0 E

Aus 722 [997/2009]

Delete light buoy 12° 20'.9 S 130° 42'.9 E

AX 72026 [1098/2009]

Delete light buoy 12° 20'.9 S 130° 42'.9 E

light buoy 12° 21'.2 S 130° 43'.0 E

AX 72722 [997/2009]

Delete light buoy 12° 20'.9 S 130° 42'.9 E

1270* AUSTRALIA - WESTERN AUSTRALIA - Port Hedland - Infrastructure

Australian Hydrographic Service (AA435859)

Aus 739 [602/2009]

Insert accompanying block 20° 18'.0 S 118° 34'.0 E

Aus 740 [1101/2009]

Insert accompanying block 20° 18'.0 S 118° 34'.0 E

1271* AUSTRALIA - WESTERN AUSTRALIA - Barrow Island - Depth southeastwards

Australian Hydrographic Service (AA434823)

Aus 743 [306/2009]*On certain copies only*Move depth, 7₂m, and enclosing contour 20° 53'.2 S 115° 33'.8 E
to 20° 53'.24 S 115° 35'.14 E**1272* AUSTRALIA - WESTERN AUSTRALIA - Exmouth Gulf - Depths**HMAS *Leeuwin* (DHDB 1348366)**Aus 328 [1226/2009]**Insert depth, 9₅m, enclosed by contour 21° 36'.34 S 114° 27'.11 E
depth, 8₄m, enclosed by contour 21° 43'.68 S 114° 26'.98 E
depth, 8₂m, enclosed by contour 21° 44'.89 S 114° 24'.44 ESubstitute depth, 4₄m, for depth, 5₈m 21° 48'.0 S 114° 26'.0 EDelete depth, 10₆m 21° 44'.6 S 114° 25'.2 E**Aus 744 [1102/2009]**Insert depth, 8₄m, enclosed by contour 21° 43'.60 S 114° 27'.05 ESubstitute depth, 9₅m, enclosed by contour for depth, 12₄m 21° 36'.3 S 114° 27'.2 E
depth, 12₆m, for depth, 14₂m 21° 35'.9 S 114° 32'.7 E
depth, 8₂m, for depth, 9m 21° 44'.8 S 114° 24'.5 E
depth, 4₄m, for depth, 5₈m 21° 47'.9 S 114° 26'.1 EDelete depth, 16₁m, and enclosing contour 21° 34'.8 S 114° 34'.8 E
depth, 14₂m, and enclosing contour 21° 39'.7 S 114° 29'.3 E**1273* AUSTRALIA - SOUTH AUSTRALIA - Thevenard - Depth**

Australian Hydrographic Service (AA435886)

Aus 122 [655/2009]Substitute depth, 9₇m, for depth, 8₆m 32° 08'.71 S 133° 37'.94 E

1274* AUSTRALIA - VICTORIA - Barwon Head - Wreck

Former Notice - 1087(P)/2009 is cancelled

Scientific Management Associates (AA436259, AA436260)

Aus 143 [1065/2009]Insert depth, 7m, enclosed by danger circle with legend *Wk* 38° 17'.99 S 144° 32'.60 E**Aus 144 [1003/2009]**Insert depth, 7m, enclosed by danger circle with legend *Wk* 38° 17'.994 S 144° 32'.604 E**Aus 349 [1231/2009]**Insert depth, 3₅m, enclosed by danger circle with legend *Wk* 38° 18'.08 S 144° 32'.52 E**Aus 422 [1231/2009]**Insert depth, 3₅m, enclosed by danger circle with legend *Wk* 38° 18'.0 S 144° 32'.6 E**Aus 487 [1231/2009]**Insert depth, 7m, enclosed by danger circle with legend *Wk* 38° 17'.99 S 144° 32'.60 E**Aus 788 [1231/2009]**Insert depth, 7m, enclosed by danger circle with legend *Wk* 38° 17'.99 S 144° 32'.60 E**1275* AUSTRALIA - VICTORIA - Port Phillip - Light buoys withdrawn**

Victorian Notices 146/2009, 147/2009 (AA435841, AA435367)

Aus 143 [1274/2009]Delete light buoy 38° 14'.5 S 144° 59'.8 E
Delete light buoy 37° 57'.6 S 144° 57'.6 E
Delete light buoy 37° 54'.5 S 144° 53'.3 E
Delete light buoy 38° 02'.6 S 144° 33'.1 E**Aus143 (plan, Blairgowrie)**

Delete light buoy 38° 20'.97 S 144° 46'.15 E

Aus 144 [1274/2009]Delete light buoy 38° 18'.60 S 144° 42'.56 E
Delete light buoy 38° 16'.48 S 144° 39'.04 E**Aus 154 [1230/2009]**Delete light buoy 37° 51'.48 S 144° 56'.81 E
Delete light buoy 37° 51'.21 S 144° 54'.79 E
Delete light buoy 37° 52'.03 S 144° 55'.58 E
Delete light buoy 37° 49'.17 S 144° 55'.87 E
Delete light buoy 37° 50'.44 S 144° 53'.80 E
Delete light buoy 37° 49'.56 S 144° 54'.18 E**Aus 155 [1003/2009]**Delete light buoy 37° 57'.60 S 144° 57'.58 E
Delete light buoy 37° 54'.48 S 144° 53'.25 E**Aus 157 [1065/2009]**Delete light buoy 38° 02'.64 S 144° 33'.08 E
Delete light buoy 38° 07'.00 S 144° 35'.96 E

1275* AUSTRALIA - VICTORIA - Port Phillip - Light buoys withdrawn (continued)**Aus 158 [1004/2009]**

Insert	depth, 9 ₇ m	38° 20'.46 S	144° 52'.30 E
Delete	light buoy	38° 19'.92 S	144° 45'.76 E
	light buoy	38° 18'.60 S	144° 42'.56 E
	light buoy	38° 13'.63 S	144° 42'.55 E
	light buoy	38° 16'.58 S	144° 47'.79 E
	light buoy	38° 20'.97 S	144° 46'.15 E
	light buoy	38° 21'.57 S	144° 49'.26 E
	light buoy	38° 20'.47 S	144° 52'.32 E
	light buoy	38° 16'.56 S	144° 57'.63 E
	light buoy	38° 18'.77 S	144° 52'.12 E
	light buoy	38° 14'.46 S	144° 59'.83 E
	light buoy	38° 16'.48 S	144° 39'.04 E

1276* AUSTRALIA - VICTORIA - Port Phillip - Anchorage

Port of Melbourne Corporation (AA436368, AA436369)

Aus 143 [1275/2009]

Move	anchor berth and swinging circle, centred on	37° 56'.2 S	144° 50'.1 E
	to	37° 56'.18 S	144° 50'.97 E

1277* AUSTRALIA - VICTORIA - Sandringham - Depths

Redborough Mapping Service (DHDB 1322695)

Aus 155 (plan, Sandringham) [1275/2009]

Insert	depth, 2 ₅ m	37° 56'.468 S	144° 59'.548 E
	depth, 1 ₃ m, (a)	37° 56'.564 S	144° 59'.559 E
	depth, 1 ₈ m, (b) and extend contour W to enclose (a) and (b)	37° 56'.502 S	144° 59'.560 E
Delete	depth, 1 ₆ m	37° 56'.57 S	144° 59'.57 E

1278* AUSTRALIA - VICTORIA - Western Port - Crib Point - Light beacon

Victorian Notices 71/2005 (AA159275)

Aus 152 (plan, Crib Point) [204/2009]*On certain copies only*

Move	light beacon	38° 21'.27 S	145° 13'.59 E
	to	38° 21'.275 S	145° 13'.531 E

1279* AUSTRALIA - VICTORIA - Port Albert - Light sector

Gippsland Ports (AA435866)

Aus 181 [1066/2009]

Insert	light sector 009.5° - 189.5° (180°)	38° 43'.09 S	146° 40'.93 E
--------	-------------------------------------	--------------	---------------

Aus 182 (plan, Approaches to Port Albert) [1172/2009]

Insert	light sector 009.5° - 189.5° (180°)	38° 42'.993 S	146° 41'.008 E
--------	-------------------------------------	---------------	----------------

1280 PACIFIC OCEAN - Tuvalu - Niulakita Island - Depth
 BA Notice 16/2016/2009 (AA435436)

Aus 4060 (INT 60) [1217/2009]

Substitute	depth, <i>15m</i> , for depth, 24m	10° 51'.0 S	179° 41'.0 E
------------	------------------------------------	-------------	--------------

Aus 4604 (INT 604) [1265/2009]

Insert	depth, <i>15m</i> , enclosed by danger circle	10° 54'.5 S	179° 45'.5 E
--------	---	-------------	--------------

Delete	depth, 24m, and enclosing danger circle	10° 51'.0 S	179° 41'.0 E
--------	---	-------------	--------------

AX 4604F [1265/2009]

Insert	depth, <i>15m</i> , enclosed by danger circle	10° 54'.5 S	179° 45'.5 E
--------	---	-------------	--------------

Delete	depth, 24m, and enclosing danger circle	10° 51'.0 S	179° 41'.0 E
--------	---	-------------	--------------

1281(T)/2009 AUSTRALIA - NEW SOUTH WALES - Port Kembla - Depth information*Former Notice - 1069(T)/2009 is cancelled*

Port Kembla Port Corporation Notice 12/2009 (AA437324)

Available depths as at 30 October 2009:

<i>Berth</i>	<i>Metres</i>	<i>Remarks</i>
Inner Harbour	15.2	
North West Basin	11.7	
* 101	11.4	
* 102	16.1	
* 103	12.0	
* 104	15.8	
* 105	15.2 (14.9 for vessels overhanging)	
106	13.9	
* 107	11.9	
108	-	Future Development
* 109	11.8	
* 110	10.7 (9.0)	
* 111	15.5	
* 112	12.6	
* 113	10.5	
* 201	10.3	To 250m
* 201	9.6	To 280m
* 201	9.5	To 350m
* 202	10.7	
* 202	10.6	
* 202	10.4	
* 203	9.7	
* 204	4.8	
205	7.0	
* 206	11.4	

* Indicates new or revised entry.

Chart temporarily affected - Aus 194 - AU5XX194

1282(T)/2009 AUSTRALIA - NEW SOUTH WALES - Newcastle - Depth information

Former Notice - 1070(T)/2009 is cancelled

Newcastle Port Corporation (AA436359)

Available depths as at 26 October 2009:

<i>Berth</i>	<i>Metres</i>
Western Basin 3	11.6
Western Basin 4	11.6
Eastern Basin 1	11.3
Eastern Basin 2 North of Ch 450	11.6
Eastern Basin 2 South of Ch 450	11.3
Dockyard 2 (Dredge)	3.9
Channel Berth (formerly Dockyard 4)	8.0
Dyke 1	12.8
Dyke 2	12.8
* Dyke 4	16.5
* Dyke 5	16.5
Dyke 6	6.3
BHP Wharf 6 to Ch 1050	7.6
Kooragang 2	11.6
Kooragang 2 North Dolphin	11.0
Kooragang 2 South Dolphin	11.0
Kooragang 3	13.0
* Kooragang 4	16.5
Kooragang 5	16.4
* Kooragang 6	16.3
Kooragang Ship Receival KSR	8.0
Throsby 1	9.5
Carrington wharf	To be sounded as and when required
Tug berth 4	6.5
Elgo wharf	To be sounded as and when required
<i>Channels</i>	
* Entrance Approach	17.7
* Entrance Channel (18.0m)	18.0
* Entrance Channel (17.4m)	17.4
* Entrance Channel (16.8m)	16.8
Entrance Channel (16.2m)	16.1
Entrance Channel to Horseshoe	15.2
Horseshoe	15.0
Steelworks Channel to Swinging Basin	15.0
Swinging Basin	15.0
Swinging Basin to Mayfield 4	9.7
Basin Cutting	12.8
Basin Area to Eastern & Western Basin Berths	12.4
Basin Area to 1 Throsby	10.0
Stockton Crossing	3.6
* Indicates revised entry.	

Chart temporarily affected - Aus 207 - Aus 208 - AU5XX208

1283(T)/2009 AUSTRALIA - QUEENSLAND - Gladstone - Scientific instruments
 Maritime Safety Queensland Notice 712(T)/2009 (AA435652)

Scientific instruments marked by special conical light buoys, Q.Y, exist in the vicinity of:

<i>Position</i>	<i>Remarks</i>
23° 48'.56 S 151° 12'.87 E	18 structures deployed
23° 48'.99 S 151° 17'.63 E	18 structures deployed
23° 46'.08 S 151° 18'.20 E	72 structures deployed.

The extent of the areas will be marked by white poly-floats.

Mariners are advised to navigate with caution in the area.

Chart temporarily affected - Aus 244 - Aus 245 - Aus 819 - AU424151 - AU5244X5

1284(T)/2009 AUSTRALIA - QUEENSLAND - Dome Island - Wreck
 Maritime Safety Queensland Notice 728(T)/2009 (AA437315)

A wreck exists in position 22° 25'.5 S 150° 44'.6 E.

Mariners are advised to navigate with caution in the area.

Chart temporarily affected - Aus 260 - Aus 367 - Aus 820 - Aus 822 – AX 0260E – AX 0367E – AX 0820E – AX 0822E – AX 60260 - AU423150

1285(T)/2009 AUSTRALIA - QUEENSLAND - Townsville - Dredging operations completed

Former Notice - 1193(T)/2009 is cancelled

Maritime Safety Queensland Notice 713(T)/2009 (AA435653)

Cancel this notice on receipt.

Chart formerly affected - Aus 257 - AU5XX257

1286(T)/2009 AUSTRALIA - QUEENSLAND - Townsville - Depth information*Former Notice - 967(T)/2009 is cancelled*

Maritime Safety Queensland Notice 711(T)/2009 (AA435650)

Available depths as at 22 October 2009:

	<i>Metres</i>	<i>Remarks</i>
* Sea Channel	11.8	
* Platypus Channel	12.0	
Outer Harbour:		
Arrival Channel	7.6	West of a line from dolphin across end of berth pocket to edge of arrival channel
* Departure Channel	11.5	
Inner Harbour:		
Harbour	12.0	
<i>Berths:</i>		
* No 1	12.0	
No 2	12.3	
* No 3	11.7	
* No 4	10.6	
No 7	11.0	
* No 8	10.0	
No 9	11.7	
No 10	9.6	To seaward dolphin
* No 11	12.0	
CB Marine	1.9	
Between No 7 and No 8	10.4	Seaward of zero mark at No 7
* Between No 9 and No 10	10.5	Seaward of zero mark at No 10
Ross River Channel	1.0	
Ross Creek	-	No declared depth

* Indicates revised entry.

Chart temporarily affected - Aus 256 - Aus 257 - AU5XX257**1287(T)/2009 AUSTRALIA - QUEENSLAND - Townsville - Obstruction removed***Former Notice - 1134(T)/2009 is cancelled*

Maritime Safety Queensland Notice 724/2009 (AA436345)

Cancel this notice on receipt.

Chart formerly affected - Aus 256 - Aus 257 - AU5XX257**1288(T)/2009 AUSTRALIA - QUEENSLAND - Allingham - Light removed**

Maritime Safety Queensland Notice 716(T)/2009 (AA436363)

The light, *Fl.2-5s* (18° 42'.41 S 146° 17'.89 E), has been temporarily removed.**Chart temporarily affected - Aus 827 - Aus 828 - AU419146****1289(T)/2009 AUSTRALIA - QUEENSLAND - Cairns - Dredging operations***Date - Until 11 December 2009*

Maritime Safety Queensland Notice 718(T)/2009 (AA436361)

Dredging operations are in progress at the naval base (16° 56'.03 S 145° 46'.77 E).

Special light buoys, Q, mark the anchors deployed.

Mariners are advised that entry to this area is prohibited during this period.

Chart temporarily affected - Aus 263 - AU5262X4

1290(T)/2009 AUSTRALIA - TORRES STRAIT - Varzin Passage - Scientific instruments

Date - Until 25 November 2009

Department of Defence (AA435924 - AA435928)

Subsurface scientific instruments exist in positions (WGS84 datum):

10° 35'.36 S 141° 52'.49 E

10° 31'.04 S 141° 55'.08 E

10° 31'.69 S 141° 51'.90 E

10° 31'.46 S 141° 58'.43 E.

Chart temporarily affected - Aus 289 - Aus 296 - Aus 301 - Aus 376 - Aus 700 - AU411141**1291(T)/2009 AUSTRALIA - WESTERN AUSTRALIA - Browse Island - Scientific instruments recovered**

Former Notice - 101(T)/2009 is cancelled

MetOcean Engineers (AA435817)

Cancel this notice on receipt.

Chart formerly affected - Aus 319 – AX 0319F - AU314123**1292(T)/2009 AUSTRALIA - WESTERN AUSTRALIA - Scott Reef - Scientific instrument**

Former Notice - 103(T)/2009 is cancelled

Date - Until 28 February 2010

MetOcean Engineers (AA435817)

A subsurface scientific instrument exists in position 14° 11'.66 S 121° 53'.00 E.

Chart temporarily affected - Aus 43 - Aus 322 – AX 0322F - AU315121**1293(T)/2009 AUSTRALIA - WESTERN AUSTRALIA - Rankin Bank to Dampier - Scientific instruments**

Former Notice - 1029(T)/2009 is cancelled

Date - Until 28 February 2010

MetOcean Engineers (AA436305)

Scientific instruments exist as follows:

<i>Position (WGS84 datum)</i>	<i>Remarks</i>
20° 01'.99 S 115° 25'.37 E	lit buoy, <i>Fl(5)Y.20s</i>
20° 02'.06 S 115° 25'.24 E	5 poly-floats
20° 14'.17 S 116° 19'.07 E	lit buoy, <i>Fl(5)Y.20s</i>
20° 14'.30 S 116° 19'.02 E	5 poly-floats
20° 18'.42 S 116° 33'.00 E	lit buoy, <i>Fl(5)Y.20s</i>
20° 18'.55 S 116° 32'.98 E	5 poly-floats
20° 22'.31 S 116° 46'.57 E	lit buoy, <i>Fl(5)Y.20s</i>
20° 22'.35 S 116° 46'.47 E	5 poly-floats
20° 33'.90 S 116° 44'.03 E	5 poly-floats
20° 33'.91 S 116° 44'.06 E	lit buoy, <i>Fl(5)Y.20s</i>

Chart temporarily affected - Aus 57 - Aus 58 - Aus 59 - Aus 327 - Aus 328 - Aus 741 - Aus 742 - AU421115 - AU421116 - AU5XXX58**1294(T)/2009 AUSTRALIA - WESTERN AUSTRALIA - Passage Island - Scientific instruments**

MetOcean Engineers (AA435817)

Scientific instruments exist as follows:

<i>Position (WGS84 datum)</i>	<i>Remarks</i>
21° 05'.94 S 115° 42'.69 E	5 poly-floats
21° 09'.78 S 115° 45'.78 E	5 poly-floats

Chart temporarily affected - Aus 327 - Aus 328 - Aus 743 - AU422115

1295(T)/2009 AUSTRALIA - WESTERN AUSTRALIA - Barrow Island - Seismic survey northwards completed

Former Notice - 174(T)/2009 is cancelled
 Searcher Seismic Pty Ltd (AA382324, AA382326)

Cancel this notice on receipt.

Chart formerly affected - Aus 327 - Aus 328 - Aus 415 – Aus 416 - AX 0415F – AU320114

1296(T)/2009 AUSTRALIA - WESTERN AUSTRALIA - Exmouth Plateau - Obstruction

Date - Until 31 October 2010
 HESS Exploration Australia (AA435937)

A suspended wellhead, least depth *1059m*, exists in position 20° 03'.86 S 113° 35'.99 E (WGS84 datum).

Chart temporarily affected - Aus 329 - Aus 415 - Aus 416 – Aus 4708 (INT 708) – AX 0415F – AX 4708F - AU130090

1297(T)/2009 AUSTRALIA - TASMANIA - Nubeena - Harbour works completed

Former Notice - 634(T)/2009 is cancelled
 Marine and Safety Tasmania Notice 148/2009 (AA436346)

Cancel this notice on receipt.

Chart formerly affected - Aus 171

1298(T)/2009 AUSTRALIA - VICTORIA - Port Phillip - Hobsons Bay - Harbour works completed

Former Notice - 982(T)/2009 is cancelled
 Victorian Notice 153/2009 (AA437652)

Cancel this notice on receipt.

Chart formerly affected - Aus 154 - Aus 155 - AU438144 - AU5XX154

1299(T)/2009 AUSTRALIA - VICTORIA - Port Phillip - Mordialloc - Shoaling

Victorian Notice 152(T)/2009 (AA437327)

Shoaling, with depths *0.5m* to *1m*, exist within the entrance to Mordialloc Creek (38° 00'.65 S 145° 05'.07 E).

Mariners are advised to navigate with caution in the area.

Chart temporarily affected - Aus 143 - Aus 155 - AU439145

1300(T)/2009 AUSTRALIA - VICTORIA - Anderson Inlet - Shoaling

Victorian Notice 150/2009 (AA436349)

Shoaling exists in the outer entrance channel of the Anderson Inlet entrance bar.

Mariners are advised to navigate with caution in the area.

Chart temporarily affected - Aus 801 - AU439145

1301(T)/2009 AUSTRALIA - VICTORIA - Barry Beach - Shoaling

Former Notice - 1002(T)/2004 is cancelled

Victorian Notice 149/2009 (AA436347)

Shoaling, with a least depth of *5m*, exists in the Barry Beach Channel (38° 43'.00 S 146° 22'.77 E).

Mariners are advised to navigate with caution in the area.

Chart temporarily affected - Aus 181 - Aus 182 - AU439146

1302(T)/2009 AUSTRALIA - VICTORIA - Port Welshpool - Middle Ground Channel - Beacon destroyed

Gippsland Ports (AA433895 - AA433897)

No2 port lateral beacon (38° 42'.36 S 146° 29'.15 E (WGS84 datum)) has been destroyed; a port lateral cylindrical buoy has been established in situ.

Chart temporarily affected - Aus 181 - AU439146

1303(T)/2009 AUSTRALIA - VICTORIA - Port Albert - Harbour works

Victorian Notice 151/2009 (AA436348)

Demolition and construction works are in progress at the boat harbour jetty (38° 40'.41 S 146° 41'.73 E (WGS84 datum)).

A pile driving barge and support vessel are on site and anchors will be deployed.

Diving operations are also in progress.

Two *Fl. Y.5s* lights have been attached to the jetty structure.

Mariners are advised to navigate with caution in the area.

Chart temporarily affected - Aus 181 - Aus 182 - AU439146

HYDROGRAPHIC REPORTS

<i>Locality</i>	<i>Report</i>	<i>Ship/Authority</i>	<i>Observer</i>
VIC- Port Phillip	Light beacons	HMAS <i>Melbourne</i>	

NAVIGATION WARNINGS

The following radio messages have been received during the period to 6 November 2009. Signal copies of these messages may be destroyed. It is recommended that the reprint of Navigational Warnings should be kept in a file or a book divided into areas. Cancellation should be made on receipt of signals and reprints.

Rigs on location other than those listed in the latest Section III summary are the subject of Radio Navigational Warnings. Rigs in transit will not be the subject of Warnings.

AUSCOAST WARNING

258 Drill rig *Songa Mercur* in position 19° 55'.70 S 115° 14'.90 E. 2.5M clearance requested.
 259 Cancelled.
 260 Cancelled.

NAVAREA X WARNINGS

Nil.

Navigational warnings in force as at 060001UTC NOV 09.**Auscoast**

128 188 191 214 216 218 229 230 231 239 242 243 245 246 253 254 255 257 258

Navarea X

Nil.

Summary of mobile drilling rigs as at 060001UTC NOV 09.

<i>Name</i>	<i>Position</i>
Ocean Patriot	39° 20'.37 S 142° 44'.56 E
Kan Tan IV	39° 53'.07 S 145° 22'.14 E
Ocean Shield	10° 53'.58 S 126° 44'.35 E
Songa Venus	11° 37'.48 S 125° 01'.36 E
West Triton	12° 41'.34 S 124° 31'.83 E
Stena Clyde	12° 58'.70 S 123° 47'.10 E
Transocean Legend	13° 40'.07 S 122° 16'.32 E
Nan Hai 6	19° 35'.50 S 116° 26'.10 E
Atwood Eagle	19° 54'.48 S 115° 07'.55 E
Songa Mercur	19° 55'.70 S 115° 14'.90 E
Ensco 7500	20° 25'.90 S 114° 20'.60 E
Jack Bates	20° 26'.20 S 113° 44'.70 E
Ocean Epoch	21° 32'.70 S 114° 05'.69 E

NAVAREA XIV WARNINGS

041 Cancelled.
 042 Cancelled.
 043 Cancelled.
 044 Cancelled.
 045 Cancelled.
 046 Cancelled.
 047 Cancelled.
 048 Cancelled.
 049 Cancelled.
 050 Cancelled.
 051 Cancelled.
 052 Cancelled.
 053 Cancelled.
 054 South Pacific. Underwater earthquake activity reported in vicinity 25° 53'.0 S 177° 11'.0 W. Mariners are advised gas may be present at the sea surface and to keep watch for discoloured water.

Navarea XIV warnings in force as at 060001UTC NOV 09.

054

To accompany Australian Notice to Mariners 1261/2009

GREAT BARRIER REEF MARINE PARK
(GBRMP)

Areas of this chart are part of the GBRMP which is within an IMO approved Particularly Sensitive Sea Area (PSSA). Legislative restrictions apply to access, discharge of waste and other activities within the GBRMP. Significant penalties may apply for breaches. The symbol with the legend MR depicts the outer limit of all zones having higher restrictions than the General Use Zone. For details see Australian Seafarers Handbook AHP 20.

Note for chart Aus 244.

To accompany Australian Notice to Mariners 1261/2009

OMISSIONS FROM CHART

Certain information has been omitted from this chart. For details see the larger scale nautical charts and relevant nautical publications.

Note for chart Aus 245.

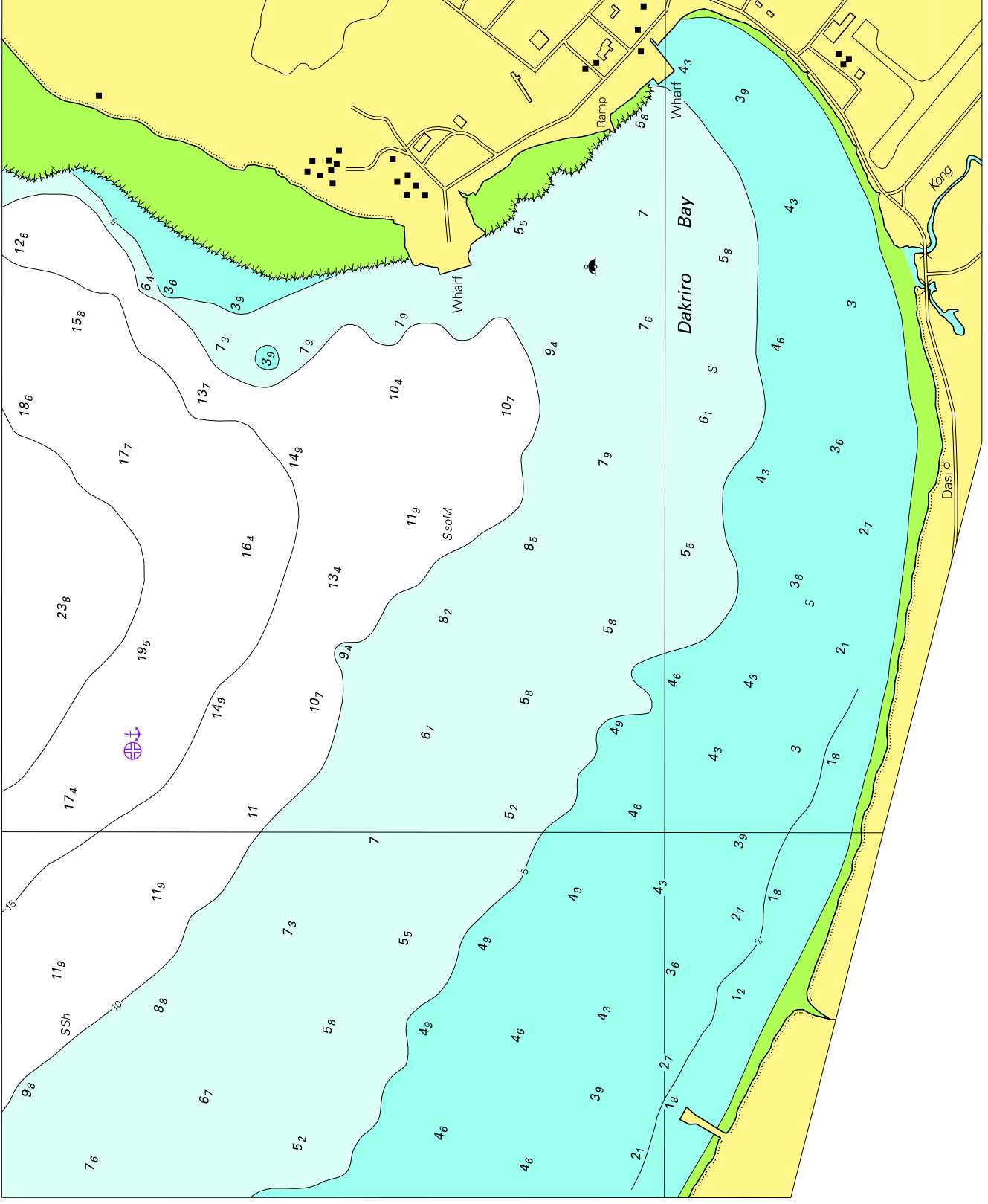
To accompany Australian Notice to Mariners 1261/2009

GREAT BARRIER REEF MARINE PARK
(GBRMP)

Areas of this chart are part of the GBRMP which is within an IMO approved Particularly Sensitive Sea Area (PSSA). Legislative restrictions apply to access, discharge of waste and other activities within the GBRMP. Significant penalties may apply for breaches. The symbol with the legend MR depicts the outer limit of all zones having higher restrictions than the General Use Zone. For details see Australian Seafarers Handbook AHP 20.

Note for chart Aus 245.

To accompany Australian Notice to Mariners 1267/2009

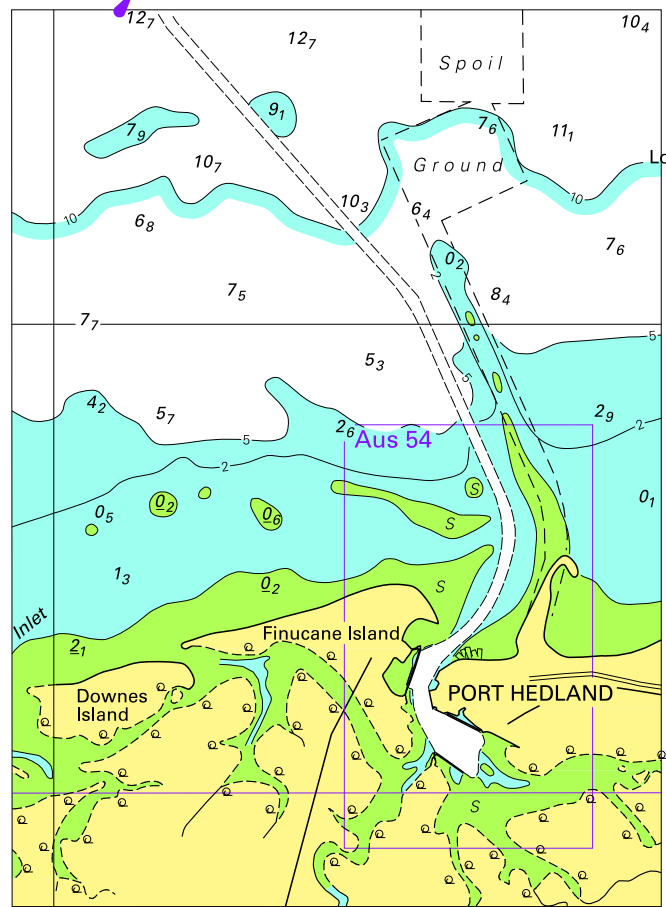


Block for chart Aus 652

© Commonwealth of Australia 2009

(213.3 x 174.4mm)

To accompany Australian Notice to Mariners 1270/2009

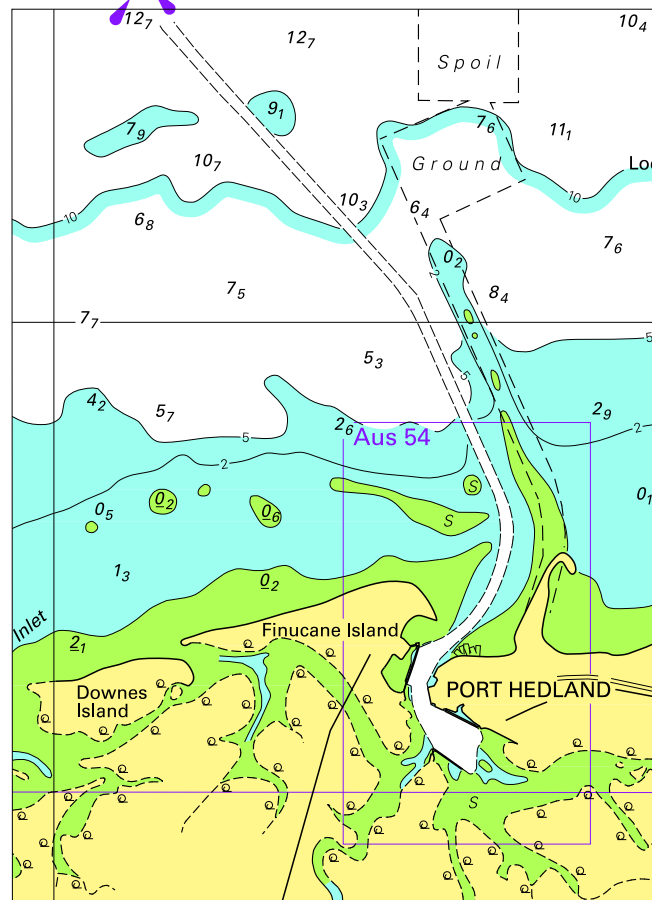


© Commonwealth of Australia 2009

Block for chart Aus 739

(85.9 x 118.6mm)

To accompany Australian Notice to Mariners 1270/2009



© Commonwealth of Australia 2009

Block for chart Aus 740

(85.5 x 118.1mm)