



23 October 2009

Edition 21

Australian Notices to Mariners are the authority for correcting Australian Charts and Publications

AUSTRALIAN NOTICES TO MARINERS

Notices 1208 – 1254 

Published fortnightly by the Australian Hydrographic Service

Commodore R. NAIRN RAN
Hydrographer of Australia

SECTIONS.

- I. **Australian Notices to Mariners, including blocks and notes.**
- II. **Hydrographic Reports.**
- III. **Navigational Warnings.**

SUPPLEMENTS.

- I. **Tracings**
- II. **Cumulative List of Australian Notices to Mariners.**
- III. **Temporary and Preliminary Notices in force.**
- IV. **Amendments to Admiralty List of Lights and Fog Signals (Vol K),
Radio Signals (NP 281(2), 282, 283(2), 285, 286(4)) and Sailing
Directions (NP 9, 13, 14, 15, 33, 34, 35, 36, 39, 44, 51, 60, 61, 62, 100, 136).**

© Commonwealth of Australia 2009

This work is copyright. Apart from any use permitted under the Copyright Act 1968, no part may be reproduced by any process, adapted, communicated or commercially exploited without prior written permission from The Commonwealth represented by the Australian Hydrographic Service.

IMPORTANT NOTICE

This edition of Notices to Mariners includes all significant information affecting AHS products which the AHS has become aware of since the last edition. All reasonable efforts have been made to ensure the accuracy and completeness of the information, including third party information, on which these updates are based. The AHS regards third parties from which it receives information as reliable, however the AHS cannot verify all such information and errors may therefore exist. The AHS does not accept liability for errors in third party information.

GENERAL INSTRUCTIONS

The substance of these notices should be inserted on the charts affected.

Bearings are referred to the true compass and are reckoned clockwise from North; those relating to lights are given as seen by an observer from seaward. Positions quoted in permanent notices relate to the horizontal datum for the chart(s). When preliminary or temporary notices affect multiple charts, positions will be provided in relation to only one horizontal datum and that datum will be specified. When the multiple charts do not have a common horizontal datum, mariners will be required to adjust the position(s) for those charts not on the specified datum. The range quoted for a light is its nominal range. Depths are with reference to the chart datum of each chart. Heights are above mean high water springs or mean higher high water, as appropriate.

The capital letter (P) or (T) after the number of any notice denotes a preliminary or temporary notice respectively, which are contained separately at the end of the permanent notices. A star (*) adjacent to the number of a notice indicates that the notice is based on original information.

REPORTING OF DANGERS

Mariners are particularly requested to notify the AUSTRALIAN HYDROGRAPHIC SERVICE, Locked Bag 8801 Wollongong, NSW 2500 (Fax 02-4223 6599, e-mail Hydro.NTM@defence.gov.au or, alternatively by filling in and submitting the [Hydrographic Notes](#) forms located on the web site – www.hydro.gov.au), immediately on the discovery of new dangers or suspected dangers to navigation. For changes or defects in aids to navigation notify AusSAR (Fax 02-6230 6868 or email rccaus@amsa.gov.au).

AUTHORISED USE

Copies of Australian notices are available free of charge from the Australian Hydrographic Service (AHS) website (www.hydro.gov.au) and through the eNotices (email) service (www.hydro.gov.au/enotices/enotices.htm).

Individual Notices may be copied for the purpose of inserting Notice substance on official charts and publications. Paper copies may be printed by chart agents and distributed to customers on a cost recovery basis. Participating chart agents are listed on the AHS website as providing a 'Paper Notices to Mariners' service (www.hydro.gov.au/prodserv/distributors/distributors.htm). Copies of the notices may not be sold for profit without prior written agreement.

NUMERICAL INDEX OF NOTICES TO MARINERS

Edition No 21

Notices	Aus Chart, INT Chart, ENC Cell, AHP
1208.....	Amendment to Australian Notice to Mariners No 2
1209.....	Aus 198, 199
1210.....	Aus 198
1211.....	Aus 201
1212.....	Aus 207, 208, 423, 424, 489, 809, AX 0809E
1213.....	Aus 209
1214.....	Aus 230
1215.....	Aus 365, 424
1216.....	Aus 252, 824
1217.....	Aus 4060, 4602, 4604, 4621, INT 60, 602, 604, 621, AX 4604F, 4621F
1218.....	Aus 832
1219.....	Aus 399
1220.....	Aus 727
1221.....	Aus 728
1222.....	Aus 733
1223.....	Aus 40
1224.....	Aus 50, 51
1225.....	Aus 742
1226.....	Aus 327, 328, 415, 416, 742, AX 0415
1227.....	Aus 444
1228.....	Aus 178
1229.....	Aus 178
1230.....	Aus 154
1231.....	Aus 150, 349, 422, 487, 788, 801
1232.....	Aus 805
1233(T).....	Aus 193, 807, 808, AX 0808E, 60193, 67192, 70193, AU436150, 5XX193
1234(P).....	Aus 197, 808, AX 0808E, AU434151, 435151
1235(T).....	Aus 222, 812, 813
1236(T).....	Aus 230, 813, 814
1237(T).....	Aus 236
1238(T).....	Aus 238, AU5237X8
1239(T).....	Aus 236
1240(T).....	Aus 364, 365, 424
1241(T).....	Aus 248, 260, 261, 367, 822, AX 0260E, 0367E, 0822E, 60260, 67261, AU423150, 5261P2
1242(T).....	Aus 248, 260, 261, 367, 820, 822, AX 0260E, 0367E, 0820E, 0822E, 60260, 67248, 67261, AU423150, 5261P2, 5XX248
1243(T).....	Aus 249, 250, 823, AX 0249E, 0823E, AU422149, 5250P2
1244(T).....	Aus 825, 826, AU320148
1245(T).....	Aus 257, AU5XX257
1246(T).....	Aus 262, 263, 264, 830, AX 6027S, 63262, AU417145, 5262X4
1247(T).....	Aus 57, 58, 59, AU5XXX58
1248(P).....	Aus 57, 58, 59, AU5XXX58
1249(T).....	Aus 327, 328, 743, AU422115
1250(T).....	Aus 64, 328, 743, 744, AU422114, 422115
1251(T).....	Aus 136, 778
1252(T).....	Aus 154, AU5XX154
1253(T).....	Aus 143, 155, AU438144
1254(T).....	Aus 181, 182, AU439146

NUMERICAL INDEX OF CHARTS AFFECTED

Edition No 21

Aus Chart	Notices	Aus Chart	Notices
Aus 40.....	1223	Aus 744	1250(T)
Aus 50.....	1224	Aus 778	1251(T)
Aus 51.....	1224	Aus 788	1231
Aus 57.....	1247(T), 1248(P)	Aus 801	1231
Aus 58.....	1247(T), 1248(P)	Aus 805	1232
Aus 59.....	1247(T), 1248(P)	Aus 807	1233(T)
Aus 64.....	1250(T)	Aus 808	1233(T), 1234(P)
Aus 136.....	1251(T)	Aus 809	1212
Aus 143.....	1253(T)	Aus 812	1235(T)
Aus 150.....	1231	Aus 813	1235(T), 1236(T)
Aus 154.....	1230, 1252(T)	Aus 814	1236(T)
Aus 155.....	1253(T)	Aus 820	1242(T)
Aus 178.....	1228, 1229	Aus 822	1241(T), 1242(T)
Aus 181.....	1254(T)	Aus 823	1243(T)
Aus 182.....	1254(T)	Aus 824	1216
Aus 193.....	1233(T)	Aus 825	1244(T)
Aus 197.....	1234(P)	Aus 826	1244(T)
Aus 198.....	1209, 1210	Aus 830	1246(T)
Aus 199.....	1209	Aus 832	1218
Aus 201.....	1211	Aus 4060	1217
Aus 207.....	1212	Aus 4602	1217
Aus 208.....	1212	Aus 4604	1217
Aus 209.....	1213	Aus 4621	1217
Aus 222.....	1235(T)	AX 0249E	1243(T)
Aus 230.....	1214, 1236(T)	AX 0260E	1241(T), 1242(T)
Aus 236.....	1237(T), 1239(T)	AX 0367E	1241(T), 1242(T)
Aus 238.....	1238(T)	AX 0415F	1226
Aus 248.....	1241(T), 1242(T)	AX 0808E	1233(T), 1234(P)
Aus 249.....	1243(T)	AX 0809E	1212
Aus 250.....	1243(T)	AX 0820E	1242(T)
Aus 252.....	1216	AX 0822E	1241(T), 1242(T)
Aus 257.....	1245(T)	AX 0823E	1243(T)
Aus 260.....	1241(T), 1242(T)	AX 4604F	1217
Aus 261.....	1241(T), 1242(T)	AX 4621F	1217
Aus 262.....	1246(T)	AX 60193.....	1233(T)
Aus 263.....	1246(T)	AX 60260.....	1241(T), 1242(T)
Aus 264.....	1246(T)	AX 6027S	1246(T)
Aus 327.....	1226, 1249(T)	AX 63262.....	1246(T)
Aus 328.....	1226, 1249(T), 1250(T)	AX 67192.....	1233(T)
Aus 349.....	1231	AX 67248.....	1242(T)
Aus 364.....	1240(T)	AX 67261.....	1241(T), 1242(T)
Aus 365.....	1215, 1240(T)	AX 70193.....	1233(T)
Aus 367.....	1241(T), 1242(T)		
Aus 399.....	1219		
Aus 415.....	1226		
Aus 416.....	1226		
Aus 422.....	1231	INT Chart	Notices
Aus 423.....	1212	INT 60.....	1217
Aus 424.....	1212, 1215, 1240(T)	INT 602.....	1217
Aus 444.....	1227	INT 604.....	1217
Aus 487.....	1231	INT 621.....	1217
Aus 489.....	1212		
Aus 727.....	1220		
Aus 728.....	1221		
Aus 733.....	1222		
Aus 742.....	1225, 1226		
Aus 743.....	1249(T), 1250(T)		

ENC Cell	Notices
AU320148	1244(T)
AU417145	1246(T)
AU422114	1250(T)
AU422115	1249(T), 1250(T)
AU422149	1243(T)
AU423150	1241(T), 1242(T)
AU434151	1234(P)
AU435151	1234(P)
AU436150	1233(T)
AU438144	1253(T)
AU439146	1254(T)
AU5XX58.....	1247(T), 1248(P)
AU5XX154	1252(T)
AU5XX193	1233(T)
AU5237X8.....	1238(T)
AU5XX248	1242(T)
AU5250P2.....	1243(T)
AU5XX257	1245(T)
AU5261P2.....	1241(T), 1242(T)
AU5262X4.....	1246(T)

1208 AUSTRALIA - Product - Amendment to Australian Notice to Mariners No 2
 Australian Hydrographic Service (AA434728)

Page 15

Delete entry for The Yacht Shop Northern Territory

1209* AUSTRALIA - NEW SOUTH WALES - Botany Bay - Light buoys
 Sydney Ports Corporation Notice 2/2007 (AA433871)

Aus 198 [1150/2009]

On certain copies only

Substitute	special spherical light buoy, <i>Fl(5)Y.20s</i> , without topmark for buoy	34° 00'.07 S	151° 10'.60 E
	special spherical light buoy, <i>Fl(5)Y.20s</i> , without topmark for buoy	33° 58'.89 S	151° 10'.25 E

Aus 199 [1150/2009]

On certain copies only

Substitute	special spherical light buoy, <i>Fl(5)Y.20s</i> , without topmark for buoy	34° 00'.07 S	151° 10'.60 E
	special spherical light buoy, <i>Fl(5)Y.20s</i> , without topmark for buoy	33° 58'.89 S	151° 10'.25 E

1210* AUSTRALIA - NEW SOUTH WALES - Kogarah Bay to Woronora River - Light beacons altered
 NSW Maritime (AA431406, AA431407)

Aus 198 [1209/2009]

Insert	accompanying block	34° 00'.5 S	151° 03'.0 E
Substitute	port lateral light beacon, <i>Fl.R.3s</i> , with topmark for beacon	33° 59'.5 S	151° 07'.3 E
Delete	beacon	33° 59'.56 S	151° 07'.21 E

1211* AUSTRALIA - NEW SOUTH WALES - Port Jackson - Western Channel - Light beacon repositioned
 Sydney Ports Corporation (AA433443, AA433444)

Aus 201 [530/2009]

Move	light beacon to	33° 50'.42 S	151° 15'.86 E
		33° 50'.429 S	151° 15'.858 E
Amend	light beacon elevation to <i>8m</i>	33° 50'.43 S	151° 15'.86 E
	light beacon elevation to <i>8m</i>	33° 50'.51 S	151° 16'.31 E

1212* AUSTRALIA - NEW SOUTH WALES - Stockton Bight - Historic wrecks
 Australian Hydrographic Service (AA429277), Newcastle Port Corporation (AA429276)

Aus 207 [745/2009]

Insert	depth, 8 ₆ m, enclosed by danger circle with magenta legend, <i>Historic Wk (see Note)</i>	32° 54'.206 S	151° 48'.084 E
	depth, 30 ₅ m, enclosed by danger circle with legend, <i>Wk</i>	32° 52'.287 S	151° 54'.967 E
Substitute	depth, 6 ₆ m, for depth, 7 ₃ m	32° 54'.53 S	151° 47'.77 E
Delete	historic wreck	32° 54'.22 S	151° 48'.04 E
	depth, 32m	32° 52'.19 S	151° 54'.96 E

Aus 208 [745/2009]

Insert	depth, 8 ₆ m, enclosed by danger circle with magenta legend, <i>Historic Wk (see Note)</i>	32° 54'.206 S	151° 48'.084 E
Substitute	depth, 6 ₆ m, for depth, 7 ₃ m	32° 54'.53 S	151° 47'.77 E
Delete	historic wreck	32° 54'.22 S	151° 48'.04 E

Aus 423 [951/2009]

Insert	depth, 16fm, enclosed by danger circle with legend, <i>Wk</i>	32° 52'.3 S	151° 55'.0 E
Delete	dangerous wreck	32° 53'.0 S	151° 54'.0 E

Aus 424 [1045/2009]

Insert	depth, 16fm, enclosed by danger circle with legend, <i>Wk</i>	32° 52'.3 S	151° 55'.0 E
Delete	dangerous wreck	32° 53'.0 S	151° 54'.0 E
	depth, 15fm	32° 51'.0 S	151° 55'.0 E

Aus 489 [807/2009]

Insert	depth, 30 ₅ m, enclosed by danger circle with legend, <i>Wk</i>	32° 52'.29 S	151° 54'.97 E
--------	--	--------------	---------------

Aus 809 [588/2009]

Insert	depth, 8 ₆ m, enclosed by danger circle	32° 54'.21 S	151° 48'.08 E
	magenta legend, <i>Historic Wks (see Note)</i> , centred on	32° 54'.4 S	151° 48'.8 E
	depth, 30 ₅ m, enclosed by danger circle with legend, <i>Wk</i>	32° 52'.29 S	151° 54'.97 E
Substitute	depth, 6 ₆ m, for depth, 7 ₃ m	32° 54'.53 S	151° 47'.77 E
Delete	historic wreck	32° 54'.22 S	151° 48'.04 E
	legend, <i>Historic Wreck (see Note)</i>	32° 54'.6 S	151° 48'.5 E
	depth, 32m	32° 52'.2 S	151° 55'.0 E

AX 0809E [588/2009]

Insert	depth, 8 ₆ m, enclosed by danger circle	32° 54'.21 S	151° 48'.08 E
	magenta legend, <i>Historic Wks (see Note)</i> , centred on	32° 54'.4 S	151° 48'.8 E
	depth, 30 ₅ m, enclosed by danger circle with legend, <i>Wk</i>	32° 52'.29 S	151° 54'.97 E
Substitute	depth, 6 ₆ m, for depth, 7 ₃ m	32° 54'.53 S	151° 47'.77 E
Delete	historic wreck	32° 54'.22 S	151° 48'.04 E
	legend, <i>Historic Wreck (see Note)</i>	32° 54'.6 S	151° 48'.5 E
	depth, 32m	32° 52'.2 S	151° 55'.0 E

1213* AUSTRALIA - NEW SOUTH WALES - Port Stephens - Fly Point - Beacon discontinued
NSW Maritime (AA431408, AA431409)

Aus 209 [808/2009]

Delete	beacon	32° 42'.87 S	152° 09'.09 E
--------	--------	--------------	---------------

1214* AUSTRALIA - QUEENSLAND - Gold Coast Seaway - Depths
Australian Hydrographic Service (AA433504)

Aus 230 [1046/2009]

Substitute	depth, 2 ₁ m, for depth, 2m	27° 54'.21 S	153° 24'.44 E
	depth, 2 ₁ m, for depth, 2m	27° 55'.71 S	153° 24'.44 E

1215* AUSTRALIA - QUEENSLAND - Gneering Shoal - Depth
Maritime Safety Queensland Notice 673/2009 (AA433127)

Aus 365 [986/2009]

Substitute	depth, 2 ₂ m, for depth, 1 ₅ fm	26° 37'.0 S	153° 10'.0 E
------------	---	-------------	--------------

Aus 424 [1212/2009]

Substitute	depth, 2 ₂ m, for depth, 1 ₅ fm	26° 37'.0 S	153° 10'.0 E
------------	---	-------------	--------------

1216* AUSTRALIA - QUEENSLAND - Thomas Island - Depth
Maritime Safety Queensland (AA434631)

Aus 252 [1152/2009]

Insert	depth, 1 ₅ m, enclosed by contour	20° 33'.25 S	149° 07'.15 E
--------	--	--------------	---------------

Delete	depth, 1 ₈ m, and enclosing contour	20° 33'.3 S	149° 07'.1 E
--------	--	-------------	--------------

Aus 824 [644/2009]

Insert	depth, 1 ₅ m, enclosed by contour	20° 33'.25 S	149° 07'.15 E
--------	--	--------------	---------------

1217* AUSTRALIA - QUEENSLAND - Mellish Reef - Depth southwestwards
HMAS *Melville* (DHDB 1358439)

Aus 4060 (INT 60) [1049/2009]

Substitute	depth, 2 ₉ m, for depth, 21m	18° 24'.0 S	155° 19'.0 E
------------	---	-------------	--------------

Aus 4602 (INT 602) [1049/2009]

Substitute	depth, 2 ₉ m, for depth, 21m	18° 24'.0 S	155° 19'.0 E
------------	---	-------------	--------------

Aus 4604 (INT 604) [1005/2009]

Substitute	depth, 2 ₉ m, for depth, 21m	18° 24'.0 S	155° 19'.0 E
------------	---	-------------	--------------

Aus 4621 (INT 621) [1154/2009]

Substitute	depth, 2 ₈ m, for depth, 21m	18° 24'.0 S	155° 19'.0 E
------------	---	-------------	--------------

AX 4604F [1005/2009]

Substitute	depth, 2 ₉ m, for depth, 21m	18° 24'.0 S	155° 19'.0 E
------------	---	-------------	--------------

AX 4621F [1154/2009]

Substitute	depth, 2 ₈ m, for depth, 21m	18° 24'.0 S	155° 19'.0 E
------------	---	-------------	--------------

1218* AUSTRALIA - QUEENSLAND - Cape Bedford - Depth
 HS *Blue* (AA284291)

Aus 832 [1270/2008]

Substitute depth, 13₃m, for depth, 7₇m

15° 12'.0 S

145° 20'.6 E

1219* PAPUA NEW GUINEA - Bougainville Island - ZOC diagram

Australian Hydrographic Service (AA432428)

Aus 399 [1156/2009]

Substitute accompanying ZOC diagram

5° 10'.0 S

156° 05'.0 E

1220* AUSTRALIA - WESTERN AUSTRALIA - Rocky Island to Eclipse Islands - ZOC diagram

Australian Hydrographic Service (AA428515)

Aus 727 [827/2009]

Substitute accompanying ZOC diagram

14° 10'.0 S

127° 16'.0 E

1221* AUSTRALIA - WESTERN AUSTRALIA - Eclipse Islands to Cape Voltaire - ZOC diagram

Australian Hydrographic Service (AA428515)

Aus 728 [649/2009]

Substitute accompanying ZOC diagram

14° 21'.0 S

126° 10'.0 E

1222* AUSTRALIA - WESTERN AUSTRALIA - Buccaneer Archipelago to King Sound - ZOC diagram

Australian Hydrographic Service (AA428515)

Aus 733 [419/2009]

Substitute accompanying ZOC diagram

17° 15'.0 S

122° 54'.5 E

1223* AUSTRALIA - WESTERN AUSTRALIA - Yampi Sound - ZOC diagram

Australian Hydrographic Service (AA428515)

Aus 40 [869/2009]

Substitute accompanying ZOC diagram

16° 10'.7 S

123° 40'.5 E

1224* AUSTRALIA - WESTERN AUSTRALIA - Broome - Depths

Department of Transport WA (AA432018, AA432019)

Aus 50 [1100/2009]

Insert	depth, 2 ₄ m, and extend contour NW to enclose	18° 00'.493 S	122° 13'.229 E
	depth, 5 ₁ m	18° 01'.892 S	122° 11'.941 E

Substitute	depth, 9 ₁ m, for depth, 8 ₅ m	18° 00'.84 S	122° 12'.62 E
------------	--	--------------	---------------

Delete	depth, 2 ₉ m	18° 00'.51 S	122° 13'.20 E
	depth, 6 ₇ m	18° 01'.92 S	122° 11'.91 E

Aus 51 [NC 31/7/2009]

Insert	depth, 1 ₅ m, enclosed by contour	18° 00'.413 S	122° 13'.309 E
	depth, 4 ₂ m, enclosed by contour	18° 01'.812 S	122° 12'.021 E

Substitute	depth, 8 ₂ m, for depth, 8 ₇ m	18° 00'.77 S	122° 12'.72 E
------------	--	--------------	---------------

Delete	depth, 2 ₁ m	18° 00'.41 S	122° 13'.29 E
	depth, 5 ₈ m	18° 01'.84 S	122° 12'.00 E

1225* AUSTRALIA - WESTERN AUSTRALIA - Dampier Archipelago - Port limit

Department of Transport WA (DHDB 1069772)

Aus 742 [1183/2008]

Insert	accompanying block	20° 30'.0 S	116° 32'.0 E
--------	--------------------	-------------	--------------

1226* AUSTRALIA - WESTERN AUSTRALIA - Montebello Islands - Wreck northeastwards

United Salvage Pty Ltd (AA433562)

Aus 327 [710/2009]

Substitute	depth, 30fm, enclosed by danger circle with legend, Wk for non dangerous wreck	20° 08'.1 S	115° 57'.1 E
------------	---	-------------	--------------

Delete	depth, 31fm	20° 08'.8 S	115° 56'.9 E
--------	-------------	-------------	--------------

Aus 328 [871/2009]

Substitute	depth, 55m, enclosed by danger circle with legend, Wk for non dangerous wreck	20° 08'.1 S	115° 57'.1 E
------------	--	-------------	--------------

Aus 415 [829/2009]

Substitute	depth, 55m, enclosed by danger circle with legend, Wk for non dangerous wreck	20° 08'.2 S	115° 57'.2 E
------------	--	-------------	--------------

Aus 416 [1001/2009]

Substitute	depth, 55m, enclosed by danger circle with legend, Wk for non dangerous wreck	20° 08'.2 S	115° 57'.2 E
------------	--	-------------	--------------

Aus 742 [1225/2009]

Insert	depth, 55m, enclosed by danger circle with legend, Wk	20° 08'.2 S	115° 57'.2 E
--------	--	-------------	--------------

AX 0415F [829/2009]

Substitute	depth, 55m, enclosed by danger circle with legend, Wk for non dangerous wreck	20° 08'.2 S	115° 57'.2 E
------------	--	-------------	--------------

1227* AUSTRALIA - SOUTH AUSTRALIA - Whyalla - Light
Australian Hydrographic Service (AA434642)

Aus 444 [548/2009]

Insert	light description, <i>FFI</i>	33° 02'.2 S	137° 36'.2 E
--------	-------------------------------	-------------	--------------

1228* AUSTRALIA - TASMANIA - Currie Harbour - Depths
3D Marine Mapping (DHDB 1290874)

Aus 178 (plan, Currie Harbour) [1168/2009]

Insert	accompanying block	38° 55'.5 S	143° 50'.3 E
--------	--------------------	-------------	--------------

1229* AUSTRALIA - TASMANIA - Grassy Harbour - Depths
3D Marine Mapping (DHDB 1290917)

Aus 178 (plan, Approaches to Grassy Harbour) [1228/2009]

Insert	accompanying block	40° 04'.3 S	144° 03'.5 E
--------	--------------------	-------------	--------------

1230* AUSTRALIA - VICTORIA - Port Phillip - River Yarra - Lights established

Port of Melbourne Corporation (AA433428, AA433431), Victorian Notices 135/2009, 137/2009 (AA431893, AA431895)

Aus 154 [1003/2009]

Insert	light, <i>F.G & Fl.G.2s No51</i>	37° 49'.233 S	144° 54'.975 E
	light, <i>F.Bu</i>	37° 49'.085 S	144° 54'.910 E
	light, <i>F.Bu</i>	37° 49'.079 S	144° 54'.920 E
	a dashed line, with legend <i>056-8°</i> , between	37° 49'.079 S	144° 54'.920 E
		37° 49'.224 S	144° 54'.653 E

1231* AUSTRALIA - VICTORIA - Cape Schanck - Historic wreck

Department of Planning and Community Development (AA434102, AA434142, AA434146)

Aus 150 [833/2009]

Insert	safe clearance depth, <i>65m</i> , enclosed by danger circle with magenta legend, <i>Historic Wk (see Note)</i>	38° 29'.20 S	144° 45'.22 E
--------	---	--------------	---------------

Aus 349 [713/2009]

Insert	safe clearance depth, <i>35fm</i> , enclosed by danger circle with magenta legend, <i>Historic Wk (see Note)</i>	38° 29'.29 S	144° 45'.14 E
--------	--	--------------	---------------

Aus 422 [951/2009]

Insert	safe clearance depth, <i>35fm</i> , enclosed by danger circle with magenta legend, <i>Historic Wk</i>	38° 29'.2 S	144° 45'.2 E
--------	---	-------------	--------------

Aus 487 [951/2009]

Insert	safe clearance depth, <i>65m</i> , enclosed by danger circle with magenta legend, <i>Historic Wk</i>	38° 29'.20 S	144° 45'.22 E
--------	--	--------------	---------------

Delete	depth 73m	38° 29'.6 S	144° 41'.8 E
--------	-----------	-------------	--------------

Aus 788 [765/2009]

Insert	safe clearance depth, <i>65m</i> , enclosed by danger circle with magenta legend, <i>Historic Wk (see Note)</i>	38° 29'.20 S	144° 45'.22 E
--------	---	--------------	---------------

Aus 801 [832/2009]

Insert	safe clearance depth, <i>65m</i> , enclosed by danger circle with magenta legend, <i>Historic Wk (see Note)</i>	38° 29'.20 S	144° 45'.22 E
--------	---	--------------	---------------

I

1232* AUSTRALIA - VICTORIA - Mallacoota - Light altered
Victorian Notice 141/2009 (AA432240)

Aus 805 [315/2009]

Amend light to *Iso.Bu.6s 14m 6M*

37° 33'.6 S

149° 45'.8 E

1233(T)/2009 AUSTRALIA - NEW SOUTH WALES - Jervis Bay - Scientific instruments*Date - Until 18 December 2009*

Geoscience Australia (AA434477)

Subsurface scientific instruments exist in positions:

35° 06'.21 S 150° 45'.89 E

35° 07'.83 S 150° 44'.15 E

35° 06'.76 S 150° 42'.49 E

35° 06'.74 S 150° 44'.59 E.

Chart temporarily affected - Aus 193 - Aus 807 - Aus 808 – AX 0808E – AX 60193 – AX 67192 – AX 70193 - AU436150 - AU5XX193**1234(P)/2009 AUSTRALIA - NEW SOUTH WALES - Cape Solander - Pilot boarding place trial eastwards***Former Notice - 1174(P)/2009 is cancelled**Date - Until 30 April 2010*

Sydney Ports Corporation (AA432903)

A six month trial of the operation of a single pilot boarding place for Sydney Harbour and Botany Bay will be in force from 28 October 2009.

Pilot boarding and disembarkation operations at the pilot boarding place for Sydney Harbour will cease on 27 October 2009.

Pilot boarding for Sydney bound vessels will take place at Botany Bay pilot boarding place (34° 01'.2 S 151° 18'.7 E). Masters should note that the limit of compulsory pilotage area remains at the port limit and pilots will not take the conduct of the vessel until it approaches the port limit of Sydney Harbour.

Pilot disembarkation for vessels bound from Sydney will also take place at the Botany Bay pilot boarding place. Masters should note that pilots will hand over the conduct of the vessel as it passes the port limit of Sydney Harbour.

Chart which will be affected - Aus 197 - Aus 808 – AX 0808E - AU434151 - AU435151**1235(T)/2009 AUSTRALIA - NEW SOUTH WALES - Clarence River - Harwood - Harbour works***Date - Until 30 April 2010*

NSW Maritime Notice NC0939 (AA434622)

Harbour works associated with the maintenance of the Harwood bridge (29° 25'.80 S 153° 14'.46 E) are in progress.

The barge *Steel Trader* is onsite and will display appropriate lights and shapes. The barge has deployed anchors marked by special light buoys and will monitor VHF Ch 13 and Ch 16.**Chart temporarily affected - Aus 222 - Aus 812 - Aus 813****1236(T)/2009 AUSTRALIA - QUEENSLAND - Point Danger to Point Lookout - Scientific instruments***Former Notice - 717(T)/2009 is cancelled*

Maritime Safety Queensland Notice 692(T)/2009 (AA434918)

Special light buoys, *F(5)Y.20s*, exist in positions (WGS84 datum):

28° 10'.84 S 153° 34'.58 E

27° 58'.01 S 153° 26'.52 E

27° 28'.13 S 153° 37'.55 E.

Mariners are not to use these buoys as moorings.

Chart temporarily affected - Aus 230 - Aus 813 - Aus 814

1237(T)/2009 AUSTRALIA - QUEENSLAND - Moreton Bay - Cleveland Point - Obstructions removed

Former Notice - 1071(T)/2009 is cancelled

Maritime Safety Queensland Notice 585(T)/2009 (AA427498)

Cancel this notice on receipt.

Chart formerly affected - Aus 236**1238(T)/2009 AUSTRALIA - QUEENSLAND - Brisbane River - Lytton Reach - Harbour works**

Maritime Safety Queensland Notice 699(T)/2009 (AA434984)

Harbour works associated with the refurbishment of Shell Oil Wharf (27° 25'.43 S 153° 07'.80 E) are in progress.

Barges, support vessels and divers are onsite.

Temporary mooring and fendering arrangements will be in place during the works. Further information on the works and berthing arrangements can be obtained through Brisbane Harbour on VHF Ch 12 or (07) 3305 1700.

Chart temporarily affected - Aus 238 - AU5237X8**1239(T)/2009 AUSTRALIA - QUEENSLAND - Moreton Bay - Redcliffe - Scientific instrument southeastwards**

Former Notice - 1091(T)/2008 is cancelled

Maritime Safety Queensland Notice 704(T)/2009 (AA435310)

A special light buoy, *Fl(5)Y.20s*, exists in position 27° 15'.10 S 153° 11'.94 E (WGS84 datum).

Mariners are not to use the buoy as a mooring.

Chart temporarily affected - Aus 236**1240(T)/2009 AUSTRALIA - QUEENSLAND - Point Cartwright - Live firing eastwards completed**

Former Notice - 1185(T)/2009 is cancelled

Department of Defence (AA429331)

Cancel this notice on receipt.

Chart formerly affected - Aus 364 - Aus 365 - Aus 424

1241(T)/2009 AUSTRALIA - QUEENSLAND - Shoalwater Bay - Live firing*Former Notice - 1189(T)/2009 is cancelled**Date - Until 30 November 2009*

Maritime Safety Queensland Notice 690(T)/2009 (AA435331)

Live firing activities will be conducted in the Shoalwater Bay training area during the period 24 October to 29 November 2009.

A marine danger area extends to all internal waters bounded by the following positions:

22° 23'.84 S 150° 18'.02 E
 22° 22'.28 S 150° 15'.73 E
 22° 21'.11 S 150° 17'.03 E
 22° 18'.98 S 150° 33'.98 E
 22° 38'.18 S 150° 43'.15 E
 22° 40'.00 S 150° 38'.00 E
 22° 35'.87 S 150° 28'.80 E
 22° 24'.75 S 150° 17'.35 E
 22° 23'.84 S 150° 18'.02 E.

All waters, creeks, beaches and other areas within the declared marine danger area are not available for access.

There will be a safe anchorages available at Port Clinton, Pearl Bay and Island Head Creek on the East Coast.

Mariners are advised to keep clear of this area throughout the above times.

Chart temporarily affected - Aus 248 - Aus 260 - Aus 261 - Aus 367 - Aus 822 – AX 0260E – AX 0367E – AX 0822E – AX 60260 – AX 67261 - AU423150 - AU5261P2**1242(T)/2009 AUSTRALIA - QUEENSLAND - Shoalwater Bay - Live firing***Former Notice - 1190(T)/2009 is cancelled**Date - Until 14 November 2009*

Maritime Safety Queensland Notice 691(T)/2009 (AA435330)

Live firing activities will be conducted in the Shoalwater Bay training area during the period 8 November to 13 November 2009.

A marine danger area extends to all internal waters bounded by the following positions:

22° 23'.84 S 150° 18'.02 E
 22° 15'.28 S 150° 38'.01 E
 22° 19'.92 S 150° 45'.05 E
 22° 29'.13 S 150° 49'.71 E
 22° 39'.85 S 150° 54'.71 E
 22° 41'.12 S 150° 50'.17 E
 22° 40'.00 S 150° 38'.00 E
 22° 35'.87 S 150° 28'.80 E
 22° 24'.75 S 150° 17'.35 E
 22° 23'.84 S 150° 18'.02 E.

All waters, creeks, beaches and other areas within the declared marine danger area are not available for access.

There will be a safe anchorage available at Supply Bay on Townshend Island.

Mariners are advised to keep clear of this area throughout the above times.

Chart temporarily affected - Aus 248 - Aus 260 - Aus 261 - Aus 367 - Aus 820 - Aus 822 – AX 0260E – AX 0367E – AX 0820E – AX 0822E – AX 60260 – AX 67248 – AX 67261 - AU423150 - AU5261P2 - AU5XX248**1243(T)/2009 AUSTRALIA - QUEENSLAND - Hay Point - Scientific instruments***Date - Until 31 October 2010*

Maritime Safety Queensland Notice 707(T)/2009 (AA435460)

Scientific instruments marked by surface floats exist in positions 21° 15'.18 S 149° 15'.83 E and 21° 16'.04 S 149° 18'.09 E.

Chart temporarily affected - Aus 249 - Aus 250 - Aus 823 – AX 0249E – AX 0823E - AU422149 - AU5250P2

1244(T)/2009 AUSTRALIA - QUEENSLAND - Nares Rock - Light unlit
 Maritime Safety Queensland Notice 700(T)/2009 (AA435157)

The light, *Fl(2)5s* (19° 46'.21 S 148° 21'.55 E), is unlit.

Chart temporarily affected - Aus 825 - Aus 826 - AU320148

1245(T)/2009 AUSTRALIA - QUEENSLAND - Townsville - Drilling operations completed

Former Notice - 1194(T)/2009 is cancelled
 Maritime Safety Queensland Notice 651(T)/2009 (AA431941)

Cancel this notice on receipt.

Chart formerly affected - Aus 257 - AU5XX257

1246(T)/2009 AUSTRALIA - QUEENSLAND - Cairns - Dredging operations completed

Former Notice - 1075(T)/2009 is cancelled
 Maritime Safety Queensland Notice 600(T)/2009 (AA428391)

Cancel this notice on receipt.

Chart formerly affected - Aus 262 - Aus 263 - Aus 264 - Aus 830 – AX 6027S – AX 63262 - AU417145 - AU5262X4

1247(T)/2009 AUSTRALIA - WESTERN AUSTRALIA - Dampier - Drilling operations

Date - Until 31 December 2009
 Dampier Port Authority Notice 29/2009 (AA434980)

The jack-up rig *Ocean Driller*, MT *Force* and support vessel *Kealani* will be conducting drilling operations in an area bounded by the following approximate positions:

20° 36'.76 S 116° 44'.92 E
 20° 36'.46 S 116° 44'.66 E
 20° 36'.34 S 116° 45'.11 E
 20° 36'.67 S 116° 45'.26 E.

The vessels will monitor VHF Ch 11.

Mariners are advised to navigate with caution in the area. A 50m exclusion zone exists around the jack-up rig.

Chart temporarily affected - Aus 57 - Aus 58 - Aus 59 - AU5XXX58

1248(P)/2009 AUSTRALIA - WESTERN AUSTRALIA - Dampier - Light beacons to be established

Former Notice - 1198(P)/2009 is cancelled
Date - Until 2 November 2009
 Dampier Port Authority Notice 28/2009 (AA433535, AA435183)

Light beacons will be established in the following positions:

HP5 20° 32'.91 S 116° 42'.65 E
 HP7 20° 33'.49 S 116° 42'.78 E
 HPR1 20° 33'.23 S 116° 42'.56 E
 HP21 20° 36'.40 S 116° 45'.30 E
 HP22 20° 36'.52 S 116° 45'.41 E

The light beacons will be temporarily lit by *Fl.5s* lights.

Chart which will be affected - Aus 57 - Aus 58 - Aus 59 - AU5XXX58

1249(T)/2009 AUSTRALIA - WESTERN AUSTRALIA - Passage Islands - Scientific instruments

Date - Until 31 October 2009

MetOcean Engineers (AA434045)

Scientific instruments marked by 5 poly floats exist in positions 21° 05'.94 S 115° 42'.69 E and 21° 09'.78 S 115° 45'.78 E (WGS84 datum).

Chart temporarily affected - Aus 327 - Aus 328 - Aus 743 - AU422115**1250(T)/2009 AUSTRALIA - WESTERN AUSTRALIA - Thevenard Island to Ashburton Road - Scientific instruments**

Former Notice - 735(T)/2009 is cancelled

Date - Until 30 April 2010

MetOcean Engineers (AA434045)

Scientific instruments exist as follows:

<i>Position (WGS84 datum)</i>	<i>Remarks</i>
21° 21'.86 S 114° 51'.20 E	5 poly floats
21° 22'.08 S 114° 50'.91 E	lit buoy, <i>Fl(5)Y.20s</i>
21° 22'.08 S 114° 51'.00 E	5 poly floats
21° 30'.12 S 115° 02'.92 E	lit buoy, <i>Fl(5)Y.20s</i>
21° 31'.40 S 114° 54'.90 E	lit buoy, <i>Fl(5)Y.20s</i>
21° 31'.61 S 115° 07'.06 E	5 poly floats
21° 31'.67 S 115° 07'.07 E	5 poly floats
21° 36'.30 S 114° 04'.94 E	lit buoy, <i>Fl(5)Y.20s</i>
21° 36'.30 S 115° 04'.75 E	5 poly floats
21° 39'.32 S 115° 00'.77 E	lit buoy, <i>Fl(5)Y.20s</i>

Chart temporarily affected - Aus 64 - Aus 328 - Aus 743 - Aus 744 - AU422114 - AU422115**1251(T)/2009 AUSTRALIA - SOUTH AUSTRALIA - Port Bonython - Light buoy off station**

Department for Transport, Energy and Infrastructure SA Notice 50/2009 (AA434954)

No7 light buoy (33° 02'.29 S 137° 45'.93 E) is currently in position 33° 01'.98 S 137° 46'.01 E; with a temporary light, Q.G.

Chart temporarily affected - Aus 136 - Aus 778**1252(T)/2009 AUSTRALIA - VICTORIA - Port Phillip - River Yarra - South Wharf - Harbour works**

Date - Until 18 December 2009

Victorian Notice 139(T)/2009 (AA435322)

Works associated with the rehabilitation of the wharf face between South Warf 25 (37° 49'.23 S 144° 55'.87 E) and 26 (37° 49'.20 S 144° 55'.61 E) are in progress.

Diving operations are being undertaken from the barge *Easterly*.

From 23 November the jack-up barge *Jub No 2* will conduct pile driving operations for the installation of a floating safety boom.

The barge can be contacted on VHF Ch 12 and mobile 0411 555 925.

Updated information can be obtained from Melbourne VTS on VHF Ch 12.

Mariners are advised to navigate with caution in the area.

Chart temporarily affected - Aus 154 - AU5XX154

1253(T)/2009 AUSTRALIA - VICTORIA - Port Phillip - St Kilda - Dredging operations completed

Former Notice - 1090(T)/2009 is cancelled

Victorian Notice 122(T)/2009 (AA427816)

Cancel this notice on receipt.

Chart formerly affected - Aus 143 - Aus 155 - AU438144

1254(T)/2009 AUSTRALIA - VICTORIA - Corner Inlet - Barry Beach - Dredging operations completed

Former Notice - 853(T)/2009 is cancelled

Victorian Notice 95(T)/2009 (AA418059)

Cancel this notice on receipt.

Chart formerly affected – Aus 181 - Aus 182 - AU439146

II

HYDROGRAPHIC REPORTS

Nil Reports

NAVIGATION WARNINGS

The following radio messages have been received during the period to 23 October 2009. Signal copies of these messages may be destroyed. It is recommended that the reprint of Navigational Warnings should be kept in a file or a book divided into areas. Cancellation should be made on receipt of signals and reprints.

Rigs on location other than those listed in the latest Section III summary are the subject of Radio Navigational Warnings. Rigs in transit will not be the subject of Warnings.

AUSCOAST WARNING

- 239 Drill rig *Transocean Legend* in position 13° 40'.07 S 122° 16'.32 E. 2.5M clearance requested.
 240 Cancelled.
 241 Cancelled.
 242 Drill rig *Stena Clyde* in position 12° 58'.70 S 123° 47'.10 E. 2.5M clearance requested.
 243 Drill rig *Nan Hai 6* in position 19° 35'.50 S 116° 26'.10 E. 2.5M clearance requested.
 244 Cancelled.
 245 Drill rig *Ocean Epoch* in position 21° 32'.70 S 114° 05'.69 E. 2.5M clearance requested.
 246 Special purpose vessel *Geco Eagle* conducting seismic survey in area 19° 03'.50 S to 20° 31'.30 S and 110° 58'.60 E to 112° 26'.60 E. 5M clearance requested.
 247 Special purpose vessel *Southern Supporter* conducting seismic survey towing 2M cable in area 11° 27'.10 S to 11° 50'.20 S and 127° 01'.60 E to 127° 20'.50 E. 2.5M clearance requested.
 248 Cancelled.
 249 Cancelled.
 250 Cancelled.
 251 Cancelled.
 252 Cancelled.
 253 Drill rig *Ocean Patriot* in position 39° 20'.37 S 142° 44'.56 E. 2.5M clearance requested.
 254 Drill rig *Jack Bates* in position 20° 26'.20 S 113° 44'.70 E. 2.5M clearance requested.
 255 Derrick Barge and unlit mooring buoys located in vicinity of 19° 59'.0 S 115° 24'.0 E. 5M clearance requested.
 256 Cancelled.
 257 Drill rig *Songa Venus* in position 11° 37'.48 S 125° 01'.36 E. 2.5M clearance requested.

NAVAREA X WARNINGS

Nil.

Navigational warnings in force as at 230001UTC OCT 09.**Auscoast**

102 128 188 191 214 216 218 228 229 230 231 237 239 242 243 245 246 247 253 254 255 257

Navarea X

Nil.

Summary of mobile drilling rigs as at 230001UTC OCT 09.

<i>Name</i>	<i>Position</i>
Ocean Patriot	39° 20'.37 S 142° 44'.56 E
Kan Tan IV	39° 53'.07 S 145° 22'.14 E
Ocean Shield	10° 53'.58 S 126° 44'.35 E
Songa Venus	11° 37'.48 S 125° 01'.36 E
West Triton	12° 41'.34 S 124° 31'.83 E
Stena Clyde	12° 58'.70 S 123° 47'.10 E
Transocean Legend	13° 40'.07 S 122° 16'.32 E
Nan Hai 6	19° 35'.50 S 116° 26'.10 E
Atwood Eagle	19° 54'.48 S 115° 07'.55 E
Songa Mercur	19° 59'.63 S 115° 07'.85 E
Ensco 7500	20° 25'.90 S 114° 20'.60 E
Jack Bates	20° 26'.20 S 113° 44'.70 E
Ocean Epoch	21° 32'.70 S 114° 05'.69 E

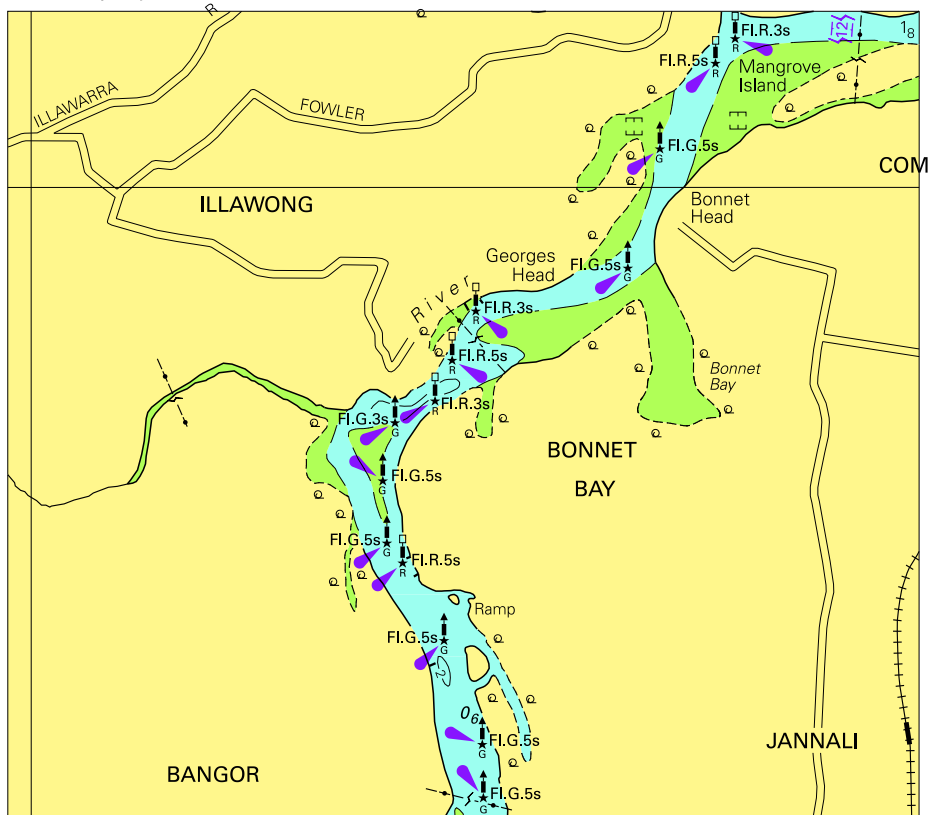
NAVAREA XIV WARNINGS

Nil.

Navarea XIV warnings in force as at 230001UTC OCT 09.

Nil.

To accompany Australian Notice to Mariners 1210/2009

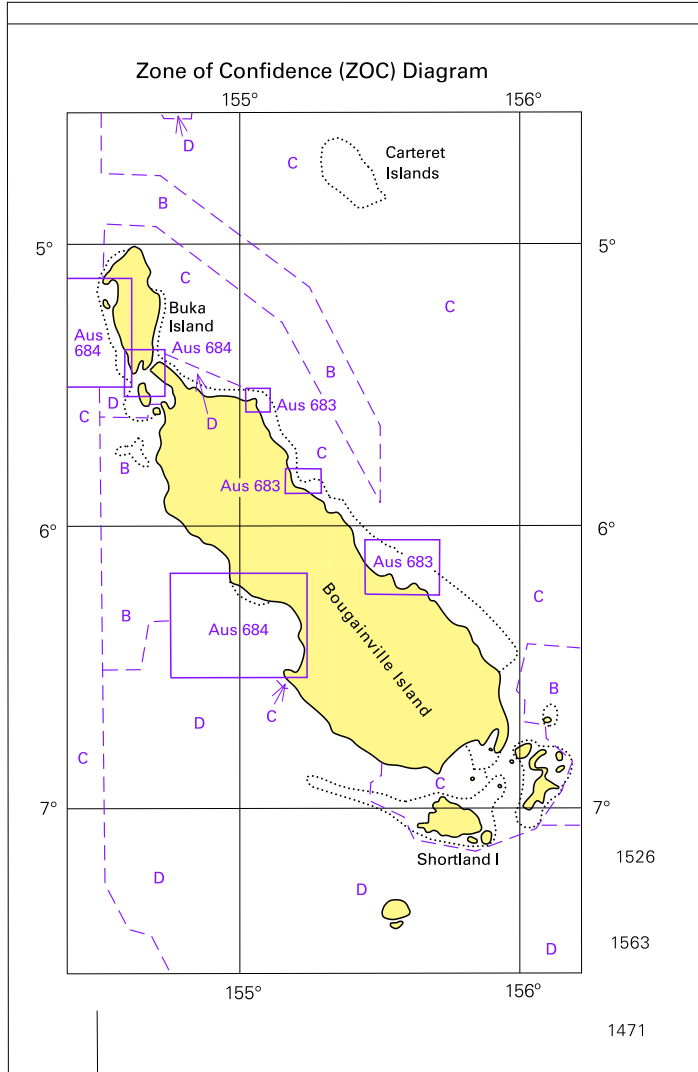


Block for chart Aus 198

© Commonwealth of Australia 2009

(120.5 x 106.5mm)

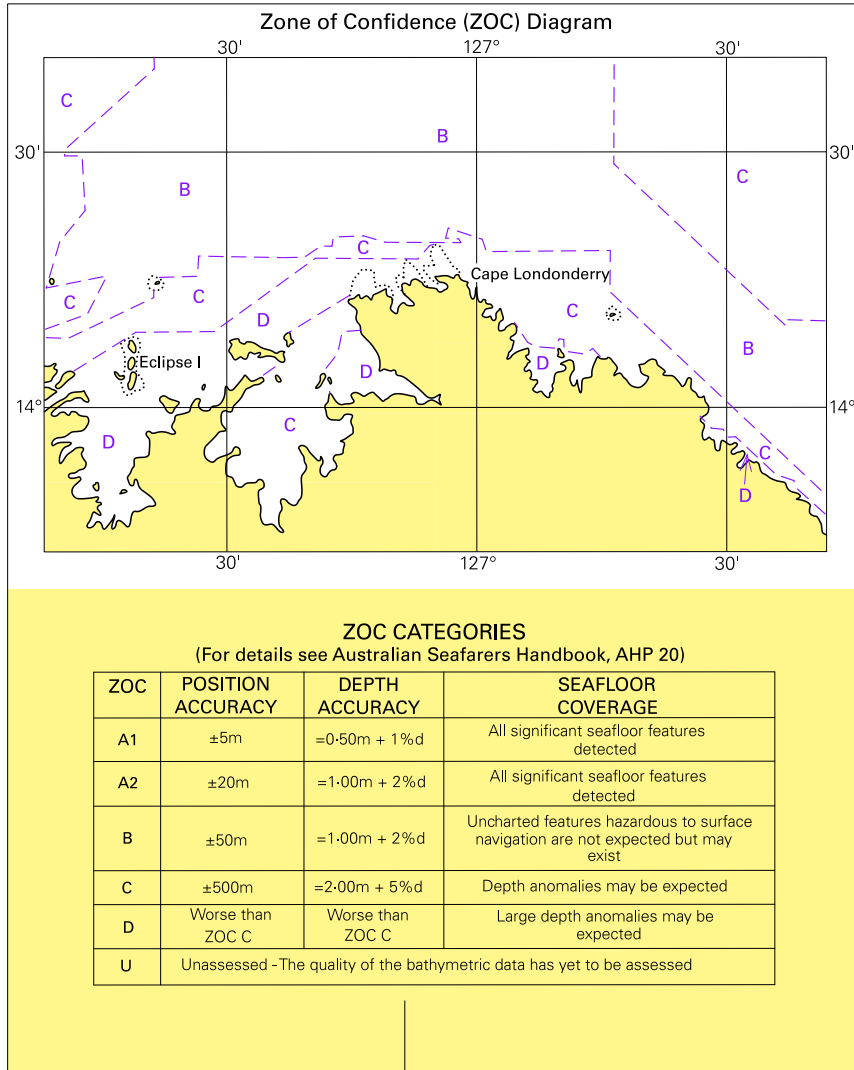
To accompany Australian Notice to Mariners 1219/2009



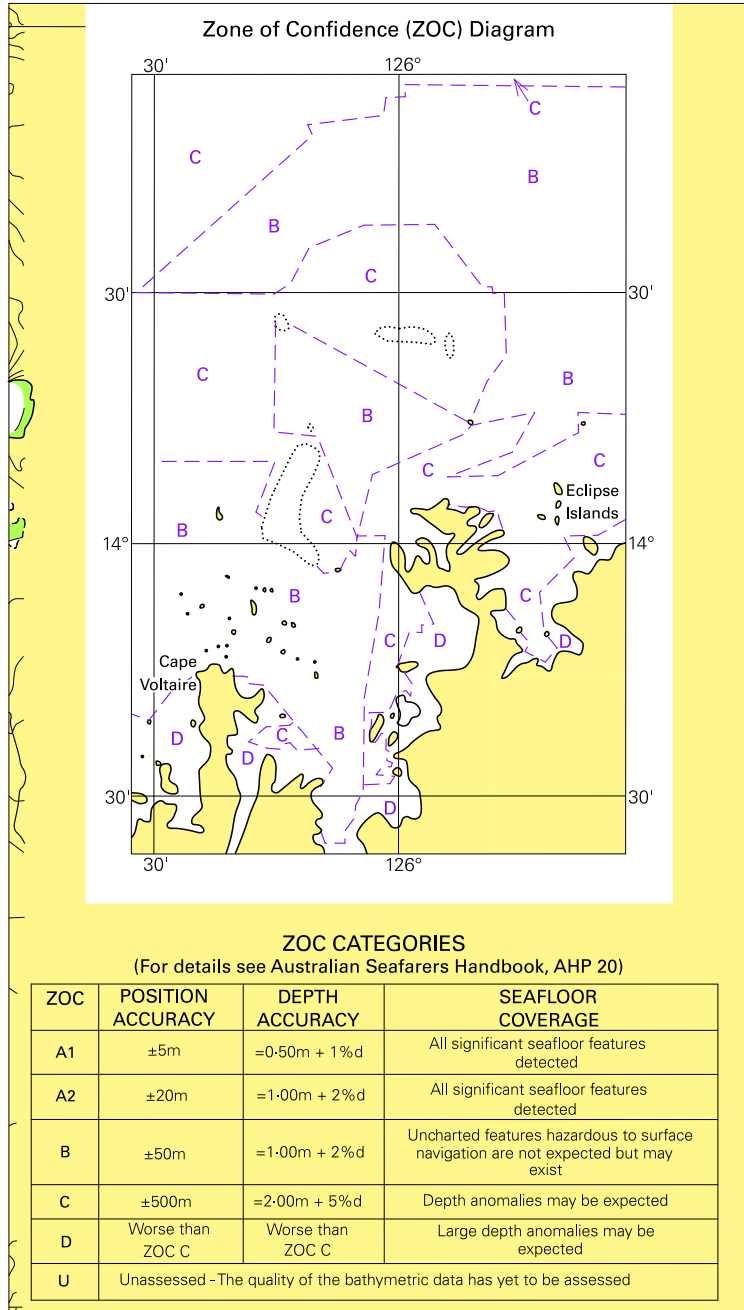
© Commonwealth of Australia 2009 (92.5 x 141.8mm)

Block for chart Aus 399

To accompany Australian Notice to Mariners 1220/2009



To accompany Australian Notice to Mariners 1221/2009

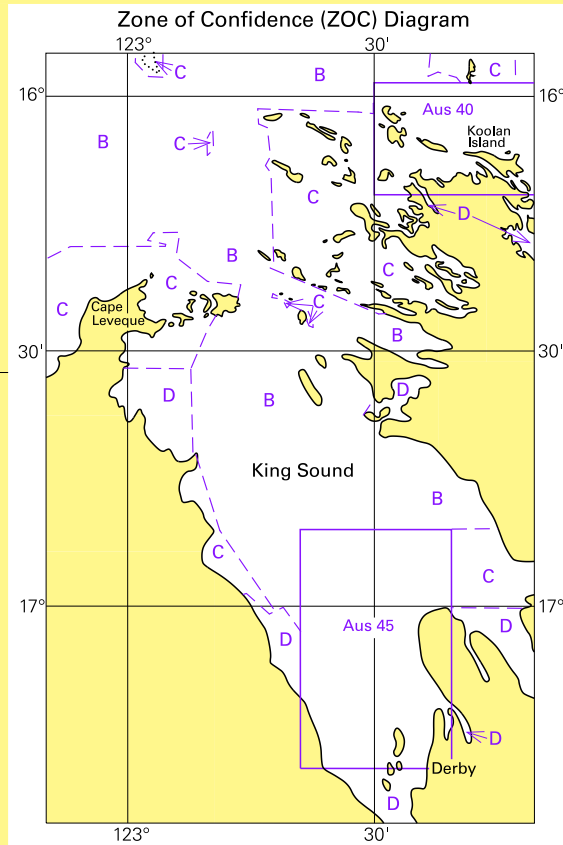


© Commonwealth of Australia 2009

(98.5 x 173.3mm)

Block for chart Aus 728

To accompany Australian Notice to Mariners 1222/2009



ZOC CATEGORIES

(For details see Australian Seafarers Handbook, AHP 20)

ZOC	POSITION ACCURACY	DEPTH ACCURACY	SEAFLOOR COVERAGE
A1	±5m	=0-50m + 1% d	All significant seafloor features detected
A2	±20m	=1-00m + 2% d	All significant seafloor features detected
B	±50m	=1-00m + 2% d	Uncharted features hazardous to surface navigation are not expected but may exist
C	±500m	=2-00m + 5% d	Depth anomalies may be expected
D	Worse than ZOC C	Worse than ZOC C	Large depth anomalies may be expected
U	Unassessed - The quality of the bathymetric data has yet to be assessed		

122°50'05"E
17°25'26"S

Block for chart Aus 733

© Commonwealth of Australia 2009

(111-0 x 172-9mm)

To accompany Australian Notice to Mariners 1223/2009

