



9 October 2009

Edition 20

Australian Notices to Mariners are the authority for correcting Australian Charts and Publications

---

# AUSTRALIAN NOTICES TO MARINERS

Notices 1148 – 1207 

## List of Temporary and Preliminary Notices in force Cumulative List – October 2009

Published fortnightly by the Australian Hydrographic Service

Commodore R. NAIRN RAN  
*Hydrographer of Australia*

---

### SECTIONS.

- I. [Australian Notices to Mariners, including blocks and notes.](#)
- II. [Hydrographic Reports.](#)
- III. [Navigational Warnings.](#)

### SUPPLEMENTS.

- I. [Tracings](#)
- II. [Cumulative List of Australian Notices to Mariners.](#)
- III. [Temporary and Preliminary Notices in force.](#)
- IV. [Amendments to Admiralty List of Lights and Fog Signals \(Vol K\), Radio Signals \(NP 281\(2\), 282, 283\(2\), 285, 286\(4\)\) and Sailing Directions \(NP 9, 13, 14, 15, 33, 34, 35, 36, 39, 44, 51, 60, 61, 62, 100, 136\).](#)

---

© Commonwealth of Australia 2009

This work is copyright. Apart from any use permitted under the Copyright Act 1968, no part may be reproduced by any process, adapted, communicated or commercially exploited without prior written permission from The Commonwealth represented by the Australian Hydrographic Service.

## **IMPORTANT NOTICE**

This edition of Notices to Mariners includes all significant information affecting AHS products which the AHS has become aware of since the last edition. All reasonable efforts have been made to ensure the accuracy and completeness of the information, including third party information, on which these updates are based. The AHS regards third parties from which it receives information as reliable, however the AHS cannot verify all such information and errors may therefore exist. The AHS does not accept liability for errors in third party information.

---

## **GENERAL INSTRUCTIONS**

The substance of these notices should be inserted on the charts affected.

Bearings are referred to the true compass and are reckoned clockwise from North; those relating to lights are given as seen by an observer from seaward. Positions quoted in permanent notices relate to the horizontal datum for the chart(s). When preliminary or temporary notices affect multiple charts, positions will be provided in relation to only one horizontal datum and that datum will be specified. When the multiple charts do not have a common horizontal datum, mariners will be required to adjust the position(s) for those charts not on the specified datum. The range quoted for a light is its nominal range. Depths are with reference to the chart datum of each chart. Heights are above mean high water springs or mean higher high water, as appropriate.

The capital letter (P) or (T) after the number of any notice denotes a preliminary or temporary notice respectively, which are contained separately at the end of the permanent notices. A star (\*) adjacent to the number of a notice indicates that the notice is based on original information.

---

## **REPORTING OF DANGERS**

Mariners are particularly requested to notify the AUSTRALIAN HYDROGRAPHIC SERVICE, Locked Bag 8801 Wollongong, NSW 2500 (Fax 02-4223 6599, e-mail [Hydro.NTM@defence.gov.au](mailto:Hydro.NTM@defence.gov.au) or, alternatively by filling in and submitting the [Hydrographic Notes](#) forms located on the web site – [www.hydro.gov.au](http://www.hydro.gov.au)), immediately on the discovery of new dangers or suspected dangers to navigation. For changes or defects in aids to navigation notify AusSAR (Fax 02-6230 6868 or email [rccaus@amsa.gov.au](mailto:rccaus@amsa.gov.au)).

---

## **AUTHORISED USE**

Copies of Australian notices are available free of charge from the Australian Hydrographic Service (AHS) website ([www.hydro.gov.au](http://www.hydro.gov.au)) and through the eNotices (email) service ([www.hydro.gov.au/enotices/enotices.htm](http://www.hydro.gov.au/enotices/enotices.htm)).

Individual Notices may be copied for the purpose of inserting Notice substance on official charts and publications. Paper copies may be printed by chart agents and distributed to customers on a cost recovery basis. Participating chart agents are listed on the AHS website as providing a 'Paper Notices to Mariners' service ([www.hydro.gov.au/prodserv/distributors/distributors.htm](http://www.hydro.gov.au/prodserv/distributors/distributors.htm)). Copies of the notices may not be sold for profit without prior written agreement.

## NUMERICAL INDEX OF NOTICES TO MARINERS

**Edition No 20**

Notices	Aus Chart, INT Chart, ENC Cell
1148.....	AU334133, 343144, 403147, 429167, 429168, 430167, 430168, 433137, 434138, 437136, 437137, 5127P1, 5127P2, 5127P3, 5127P4, 5127P5, 5127P6, 5348P1
1149.....	Supplements
1150.....	Aus 198, 199
1151.....	Aus 245, 246
1152.....	Aus 252
1153.....	Aus 257
1154.....	Aus 4621, AX 4621F, INT 621,
1155.....	Aus 523, 4622, INT 622
1156.....	Aus 399
1157.....	Aus 306, 715
1158.....	Aus 308
1159.....	Aus 22, 309, AX 0309F, 72309
1160.....	Aus 314, 319, 4603, 4721, 4722, AX 0314F, 0319F, 4603F, 4721F, 4722F, INT 603, 721, 722
1161.....	Aus 729
1162.....	Aus 730
1163.....	Aus 732
1164.....	Aus 748
1165.....	Aus 112, 113, 117, AX 63112, 70117
1166.....	Aus 755, AX 0755E
1167.....	Aus 137
1168.....	Aus 178
1169.....	Aus 4709, INT 709
1170.....	Aus 172
1171.....	Aus 169
1172.....	Aus 182
1173.....	Cumulative List of Australian Notices to Mariners – October 2009
1174(P).....	Aus 197, 808, AX 0808E, AU434151, 435151
1175(T).....	Aus 198, 199, AU5198X9
1176(T).....	Aus 200, 201, AX 63200
1177(T).....	Aus 204, 217, AU5XX204
1178(T).....	Aus 235, 236, 814
1179(T).....	Aus 236
1180(T).....	Aus 236
1181(T).....	Aus 236, AU5237X8
1182(T).....	Aus 237, 238, AU5237X8
1183(T).....	Aus 236, 237, 814, AU5237X8
1184(T).....	Aus 235, 236
1185(T).....	Aus 364, 365, 424
1186(T).....	Aus 235
1187(T).....	Aus 365
1188(T).....	Aus 245, 819, AU424151, 5244X5
1189(T).....	Aus 260, 261, 367, 822, AX 0260E, 0367E, 0822E, 60260, 67261, AU423150, 5261P2
1190(T).....	Aus 248, 260, 261, 367, 820, 822, AX 0260E, 0367E, 0820E, 0822E, 60260, 67248, 67261, 423150, 5261P2, 5XX248
1191(T).....	Aus 249, 250, 251, 823, 824, AX 0249E, 0823E, AU422149, 5250P2
1192(T).....	Aus 257, AU5XX257
1193(T).....	Aus 257, AU5XX257
1194(T).....	Aus 257, AU5XX257
1195(T).....	Aus 6
1196(T).....	Aus 51
1197(T).....	Aus 57, 58, 59, AU5XXX58
1198(T).....	Aus 57, 58, 59, AU5XXX58
1199(T).....	Aus 329, 330, 416, 4708, AX 4708F, INT 708, AU130090
1200(T).....	Aus 130, 137
1201(T).....	Aus 125, 780, 781
1202(T).....	Aus 170, 175, AU443147, 5XX175
1203(T).....	Aus 169, AU442148
1204(T).....	Aus 169, AU442148
1205(T).....	Aus 143, 144, 788, AU439144
1206(P).....	Aus 154, AU5XX154
1207(T).....	Temporary and Preliminary Notices

## NUMERICAL INDEX OF CHARTS AFFECTED

## Edition No 20

Aus Chart	Notices	Aus Chart	Notices
Aus 6.....	1195(T)	Aus 729 .....	1161
Aus 22.....	1159	Aus 730 .....	1162
Aus 51.....	1196(T)	Aus 732 .....	1163
Aus 57.....	1197(T), 1198(P)	Aus 748 .....	1164
Aus 58.....	1197(T), 1198(P)	Aus 755 .....	1166
Aus 59.....	1197(T), 1198(P)	Aus 780 .....	1201(T)
Aus 112.....	1165	Aus 781 .....	1201(T)
Aus 113.....	1165	Aus 788 .....	1205(T)
Aus 117.....	1165	Aus 808 .....	1174(P)
Aus 125.....	1201(T)	Aus 814 .....	1178(T), 1183(T)
Aus 130.....	1200(T)	Aus 819 .....	1188(T)
Aus 137.....	1167, 1200(T)	Aus 820 .....	1190(T)
Aus 143.....	1205(T)	Aus 822 .....	1189(T), 1190(T)
Aus 144.....	1205(T)	Aus 823 .....	1191(T)
Aus 154.....	1206(P)	Aus 824 .....	1191(T)
Aus 169.....	1171, 1203(T), 1204(T)	Aus 4603 .....	1160
Aus 170.....	1202(T)	Aus 4621 .....	1154
Aus 172.....	1170	Aus 4622 .....	1155
Aus 175.....	1202(T)	Aus 4708 .....	1199(T)
Aus 178.....	1168	Aus 4709 .....	1169
Aus 182.....	1172	Aus 4721 .....	1160
Aus 197.....	1174(P)	Aus 4722 .....	1160
Aus 198.....	1150, 1175(T)	AX 0249E .....	1191(T)
Aus 199.....	1150, 1175(T)	AX 0260E .....	1189(T), 1190(T)
Aus 200.....	1176(T)	AX 0309F.....	1159
Aus 201.....	1176(T)	AX 0314F.....	1160
Aus 204.....	1177(T)	AX 0319F.....	1160
Aus 217.....	1177(T)	AX 0367E .....	1189(T), 1190(T)
Aus 235.....	1178(T), 1184(T), 1186(T)	AX 0755E .....	1166
Aus 236.....	1178(T), 1179(T), 1180(T), 1181(T), 1183(T), 1184(T)	AX 0808E .....	1174(P)
Aus 237.....	1182(T), 1183(T)	AX 0820E .....	1190(T)
Aus 238.....	1182(T)	AX 0822E .....	1189(T), 1190(T)
Aus 245.....	1151, 1188(T)	AX 0823E .....	1191(T)
Aus 246.....	1151	AX 4603F.....	1160
Aus 248.....	1190(T)	AX 4621F.....	1154
Aus 249.....	1191(T)	AX 4708F.....	1199(T)
Aus 250.....	1191(T)	AX 4721F.....	1160
Aus 251.....	1191(T)	AX 4722F.....	1160
Aus 252.....	1152	AX 60260.....	1189(T), 1190(T)
Aus 257.....	1153, 1192(T), 1193(T), 1194(T)	AX 63112.....	1165
Aus 260.....	1189(T), 1190(T)	AX 63200.....	1176(T)
Aus 261.....	1189(T), 1190(T)	AX 67248.....	1190(T)
Aus 306.....	1157	AX 67261.....	1189(T), 1190(T)
Aus 308.....	1158	AX 70117.....	1165
Aus 309.....	1159	AX 72309.....	1159
Aus 314.....	1160		
Aus 319.....	1160		
Aus 329.....	1199(T)		
Aus 330.....	1199(T)		
Aus 364.....	1185(T)		
Aus 365.....	1185(T), 1187(T)		
Aus 367.....	1189(T), 1190(T)		
Aus 399.....	1156		
Aus 416.....	1199(T)		
Aus 424.....	1185(T)		
Aus 523.....	1155		
Aus 715.....	1157		
		INT Chart	Notices
		INT 603.....	1160
		INT 621.....	1154
		INT 622.....	1155
		INT 708.....	1199(T)
		INT 709.....	1169
		INT 721.....	1160
		INT 722.....	1160

ENC Cell	Notices
AU130090 .....	1199(T)
AU334133 .....	1148
AU343144 .....	1148
AU403147 .....	1148
AU422149 .....	1191(T)
AU423150 .....	1189(T), 1190(T)
AU424151 .....	1188(T)
AU429167 .....	1148
AU429168 .....	1148
AU430167 .....	1148
AU430168 .....	1148
AU433137 .....	1148
AU434138 .....	1148
AU434151 .....	1174(P)
AU435151 .....	1174(P)
AU437136 .....	1148
AU437137 .....	1148
AU439144 .....	1205(T)
AU442148 .....	1203(T), 1204(T)
AU443147 .....	1202(T)
AU5XX58.....	1197(T), 1198(P)
AU5127P1.....	1148
AU5127P2.....	1148
AU5127P3.....	1148
AU5127P4.....	1148
AU5127P5.....	1148
AU5127P6.....	1148
AU5XX154 .....	1206(P)
AU5XX175 .....	1202(T)
AU5198X9.....	1175(T)
AU5XX204 .....	1177(T)
AU5237X8.....	1181(T), 1182(T), 1183(T)
AU5244X5.....	1188(T)
AU5XX248 .....	1190(T)
AU5250P2.....	1191(T)
AU5XX257 .....	1192(T), 1193(T), 1194(T)
AU5261P2.....	1189(T), 1190(T)
AU5348P1.....	1148

**1148 AUSTRALIA - Product**

Australian Hydrographic Service (AA433389)

**New Electronic Navigation Chart (Seafarer ENC)**

<i>Cell Name</i>	<i>Released</i>	<i>Title</i>
AU334133	October 2009	South Australia - Great Australian Bight Cell 7
AU343144	October 2009	Tasmania West Coast - Southern Ocean Cell 1
AU403147	October 2009	Bismarck Sea - South East Approach to Manus Island
AU429167	October 2009	Coral Sea - Norfolk Island North West Approach
AU429168	October 2009	Coral Sea - Norfolk Island North East Approach
AU430167	October 2009	Coral Sea - Norfolk Island South West Approach
AU430168	October 2009	Coral Sea - Norfolk Island South East Approach
AU433137	October 2009	South Australia - Port Bonython to Port Augusta
AU434138	October 2009	South Australia - Port Pirie
AU437136	October 2009	South Australia - Kangaroo Island South West
AU437137	October 2009	South Australia - Kangaroo Island South
AU5127P1	October 2009	South Australia - Victor Harbor
AU5127P2	October 2009	South Australia - Beachport
AU5127P3	October 2009	South Australia - Kingston SE
AU5127P4	October 2009	South Australia - Robe
AU5127P5	October 2009	South Australia - Southend
AU5127P6	October 2009	South Australia - Port Elliot
AU5348P1	October 2009	South Australia - Port Macdonnell

For further details refer to the AHS website at [www.hydro.gov.au](http://www.hydro.gov.au) for new edition and new chart stock arrival information.

When placing orders with a chart agent, mariners should advise whether their order pertains to the current edition or the new edition.

**1149 AUSTRALIA - Product - Supplements**

The Australian Hydrographic Service will publish the following supplements on the website fortnightly:

Tracings

Cumulative List of Australia Notices to Mariners

Temporary and Preliminary Notices in force

Amendments to Admiralty List of Lights and Fog Signals (Vol K), Radio Signals (NP 281(2), 282, 283(2), 285, 286(4)) and Sailing Directions (NP 9, 13, 14, 15, 33, 34, 35, 36, 39, 44, 51, 60, 61, 62, 100, 136).

**1150\* AUSTRALIA - NEW SOUTH WALES - Botany Bay - Light buoy established**

Sydney Port Corporation (AA431181 - AA431184)

**Aus 198 [587/2009]**

Insert	special spherical light buoy, <i>Fl(5)Y.20s</i> , without topmark	33° 59'.704 S	151° 13'.684 E
	special spherical light buoy, <i>Fl(5)Y.20s</i> , without topmark	33° 59'.255 S	151° 12'.562 E

**Aus 199 [587/2009]**

Insert	special spherical light buoy, <i>Fl(5)Y.20s</i> , without topmark	33° 59'.704 S	151° 13'.684 E
Delete	topmark	33° 59'.25 S	151° 12'.56 E
	depth, 15 <sub>2</sub> m	33° 59'.69 S	151° 13'.69 E

**1151\* AUSTRALIA - QUEENSLAND - Gladstone - Gatcombe Channel - Depth**  
Maritime Safety Queensland Notice 635/2009 (AA430043)

**Aus 245 [1047/2009]**

Substitute depth, 14<sub>1</sub>m, for depth, 12<sub>8</sub>m 23° 52'.21 S 151° 21'.27 E

**Aus 246 [1047/2009]**

Insert depth, 14<sub>1</sub>m, and extend contour E to enclose 23° 52'.21 S 151° 21'.27 E

Delete depth, 13<sub>5</sub>m 23° 52'.29 S 151° 21'.17 E

**1152\* AUSTRALIA - QUEENSLAND - Thomas Island - Depth**  
Maritime Safety Queensland (AA430170, AA430169)

**Aus 252 [1069/2008]**

Insert depth, 1<sub>8</sub>m, enclosed by contour 20° 33'.28 S 149° 07'.05 E

**1153\* AUSTRALIA - QUEENSLAND - Townsville - Berth pocket**  
Maritime Safety Queensland Notice 615/2009 (AA429431)

**Aus 257 [754/2009]**

Insert accompanying block 19° 15'.0 S 146° 50'.0 E

**1154\* AUSTRALIA - CORAL SEA - Lihou Reef - Light buoy established northeastwards**  
Bureau of Meteorology (AA431593, AA431594)

**Aus 4621 (INT 621) [991/2009]**

Insert special cylindrical light buoy, *F*, without topmark 14° 48'.0 S 153° 34'.8 E

**AX 4621F [991/2009]**

Insert special cylindrical light buoy, *F*, without topmark 14° 48'.0 S 153° 34'.8 E

**1155\* PAPUA NEW GUINEA - Huon Gulf - Depths**  
RV *Melville*, James Cook University (DHDB 155300)

**Aus 523 [992/2009]**

Insert depth, 221m 6° 46'.01 S 147° 00'.41 E

Delete depth, 466m, and enclosing contour 6° 49'.4 S 147° 25'.1 E  
depth, 399m, and enclosing contour 6° 48'.5 S 147° 27'.1 E  
depth, 198m, and enclosing contour 6° 45'.5 S 147° 00'.5 E  
depth, 485m, and enclosing contour 6° 55'.2 S 147° 09'.1 E  
depth, 393m, and enclosing contour 6° 56'.0 S 147° 09'.5 E

**Aus 4622 (INT 622) [992/2009]**

Insert depth, 686m 6° 49'.2 S 147° 24'.8 E

Delete depth, 466m 6° 49'.4 S 147° 25'.1 E

**1156\* PAPUA NEW GUINEA - Shortland Islands - Depth; legend**  
 HMAS *Melville* (DHDB 1342869)

**Aus 399** [362/2009]

Insert	depth, 56m	6° 58'.93 S	155° 57'.61 E
Delete	legend, Shoals rep (1919)	6° 58'.5 S	155° 57'.7 E
	danger circle, centred on	7° 03'.4 S	155° 58'.0 E
	legend, Breakers Rep (1919)	7° 03'.8 S	155° 57'.0 E

**1157\* AUSTRALIA - NORTHERN TERRITORY - Truant Island - Marine farms**  
 Northern Territory Government (DHDB 1344321)

**Aus 306** [905/2008]

Insert	marine farm symbol, centred on	11° 39'.10 S	136° 49'.30 E
--------	--------------------------------	--------------	---------------

**Aus 715** [994/2009]

Insert	dashed line, with legend <i>Marine farm</i> (see Note), between	11° 39'.57 S	136° 48'.27 E
		11° 40'.11 S	136° 48'.67 E
		11° 39'.84 S	136° 49'.04 E
		11° 39'.40 S	136° 49'.22 E
		11° 38'.94 S	136° 50'.39 E
		11° 38'.50 S	136° 50'.06 E
		11° 38'.95 S	136° 48'.89 E
		11° 39'.57 S	136° 48'.27 E
Delete	marine farm symbol	11° 39'.6 S	136° 49'.0 E

**1158\* AUSTRALIA - NORTHERN TERRITORY - Mountnorris Bay - Marine farms**  
 Northern Territory Government (DHDB 1344321)

**Aus 308** [866/2009]

Insert	marine farm symbol, centred on	11° 22'.85 S	132° 52'.11 E
	marine farm symbol, centred on	11° 25'.25 S	132° 47'.75 E
	marine farm symbol, centred on	11° 28'.51 S	132° 44'.77 E
	marine farm symbol, centred on	11° 29'.37 S	132° 42'.77 E
	marine farm symbol, centred on	11° 20'.38 S	132° 34'.59 E
Delete	depth, 3 <sub>3</sub> fm	11° 29'.3 S	132° 42'.9 E
	depth, 4fm	11° 28'.5 S	132° 45'.1 E

**1159\* AUSTRALIA - NORTHERN TERRITORY - Saint Asaph Bay - Depths**Australian Customs Vessel *Storm Bay* (AA431344, AA431345)**Aus 22** [543/2009]

Insert	upright sounding, 3 <sub>6</sub> m (a)	11° 17'.96 S	130° 22'.66 E
	upright sounding, 3 <sub>4</sub> m (b) with broken contour enclosing (a) and (b) and legend <i>Rep(2009)</i>	11° 18'.27 S	130° 22'.74 E
Delete	contour, between	11° 18'.37 S	130° 22'.82 E
		11° 18'.15 S	130° 22'.63 E

**Aus 309** [997/2009]

Insert	upright sounding, 3 <sub>4</sub> m, enclosed by broken contour with legend <i>Rep(2009)</i>	11° 18'.27 S	130° 22'.74 E
--------	---	--------------	---------------

**AX 0309F** [997/2009]

Insert	upright sounding, 3 <sub>4</sub> m, enclosed by broken contour with legend <i>Rep(2009)</i>	11° 18'.27 S	130° 22'.74 E
--------	---	--------------	---------------

**AX 72309** [543/2009]

Insert	upright sounding, 3 <sub>4</sub> m, enclosed by broken contour with legend <i>Rep(2009)</i>	11° 18'.27 S	130° 22'.74 E
--------	---	--------------	---------------

**1160\* AUSTRALIA - TIMOR SEA - Sahul Banks - Light buoy established***Former Notice - 971(T)/2009 is cancelled*

East Puffin Pty Ltd (AA430093, AA431520)

**Aus 314** [762/2009]

Substitute	special pillar light buoy, <i>Fl. Y.5s</i> , with topmark for FPSO	12° 17'.5 S	124° 19'.5 E
------------	--	-------------	--------------

**Aus 319** [762/2009]

Substitute	special pillar light buoy, <i>Fl. Y.5s</i> , with topmark for FPSO	12° 17'.5 S	124° 19'.5 E
------------	--	-------------	--------------

**Aus 4603 (INT 603)** [944/2009]

Delete	FPSO	12° 17'.5 S	124° 19'.5 E
--------	------	-------------	--------------

**Aus 4721 (INT 721)** [1052/2009]

Substitute	special pillar light buoy, <i>Fl. Y.5s</i> , with topmark for FPSO	12° 17'.5 S	124° 19'.5 E
------------	--	-------------	--------------

**Aus 4722 (INT 722)** [1053/2009]

Substitute	special pillar light buoy, <i>Fl. Y.5s</i> , with topmark for FPSO	12° 17'.5 S	124° 19'.5 E
------------	--	-------------	--------------

**AX 0314F** [762/2009]

Substitute	special pillar light buoy, <i>Fl. Y.5s</i> , with topmark for FPSO	12° 17'.5 S	124° 19'.5 E
------------	--	-------------	--------------

**AX 0319F** [762/2009]

Substitute	special pillar light buoy, <i>Fl. Y.5s</i> , with topmark for FPSO	12° 17'.5 S	124° 19'.5 E
------------	--	-------------	--------------

**AX 4603F** [944/2009]

Delete	FPSO	12° 17'.5 S	124° 19'.5 E
--------	------	-------------	--------------

**AX 4721F** [1052/2009]

Substitute	special pillar light buoy, <i>Fl. Y.5s</i> , with topmark for FPSO	12° 17'.5 S	124° 19'.5 E
------------	--	-------------	--------------

**1160\* AUSTRALIA - TIMOR SEA - Sahul Banks - Light buoy established (continued)****AX 4722F** [998/2009]

Substitute	special pillar light buoy, Fl.Y.5s, with topmark for FPSO	12° 17'.5 S	124° 19'.5 E
------------	---	-------------	--------------

**1161\* AUSTRALIA - WESTERN AUSTRALIA - Cape Voltaire to Lamarck Island - ZOC diagram**

Australian Hydrographic Service (AA428515)

**Aus 729** [544/2009]

Substitute	accompanying ZOC diagram	14° 49'.0 S	124° 10'.0 E
------------	--------------------------	-------------	--------------

**1162\* AUSTRALIA - WESTERN AUSTRALIA - Lamarck Island to Degerando Island - ZOC diagram**

Australian Hydrographic Service (AA428515)

**Aus 730** [851/2008]

Substitute	accompanying ZOC diagram	14° 48'.0 S	125° 27'.0 E
------------	--------------------------	-------------	--------------

**1163\* AUSTRALIA - WESTERN AUSTRALIA - Hall Point to Sunday Strait - ZOC diagram**

Australian Hydrographic Service (AA428515)

**Aus 732** [419/2009]

Substitute	accompanying ZOC diagram	16° 15'.0 S	124° 36'.0 E
------------	--------------------------	-------------	--------------

**1164\* AUSTRALIA - WESTERN AUSTRALIA - Shark Bay - Legend**

Australian Hydrographic Service (AA431207)

**Aus 748** [369/2009]

Amend	legend to 26°	26° 35'.2 S	114° 06'.5 E
	legend to 26°	26° 35'.2 S	114° 13'.0 E

**1165\* AUSTRALIA - WESTERN AUSTRALIA - Fremantle to Mangles Bay - Buoys**  
Department of Transport WA (AA427645, AA427648)

**Aus 112 [1105/2009]**

Insert	special spar buoy, without topmark	32° 03'.542 S	115° 44'.173 E
Delete	depth, 3 <sub>7</sub> m	32° 03'.47 S	115° 44'.17 E

**Aus 113 [370/2009]**

Insert	special spar buoy, without topmark	32° 03'.439 S	115° 43'.987 E
Move	buoy to	32° 03'.50 S 32° 03'.542 S	115° 44'.20 E 115° 44'.173 E
Delete	depth, 5 <sub>5</sub> m	32° 03'.43 S	115° 43'.98 E

**Aus 117 [1106/2009]**

Insert	special spar buoy, without topmark	32° 03'.439 S	115° 43'.987 E
	special spar buoy, without topmark	32° 03'.542 S	115° 44'.173 E
	visitors' mooring	32° 09'.823 S	115° 40'.469 E
Move	buoy to	32° 04'.80 S 32° 04'.753 S	115° 44'.50 E 115° 44'.444 E
Delete	depth, 4 <sub>5</sub> m	32° 03'.57 S	115° 44'.16 E

**AX 63112 [1105/2009]**

Insert	special spar buoy, without topmark	32° 03'.542 S	115° 44'.173 E
Delete	depth, 3 <sub>7</sub> m	32° 03'.47 S	115° 44'.17 E

**AX 70117 [1106/2009]**

Insert	special spar buoy, without topmark	32° 03'.439 S	115° 43'.987 E
	special spar buoy, without topmark	32° 03'.542 S	115° 44'.173 E
	visitors' mooring	32° 09'.823 S	115° 40'.469 E
Move	buoy to	32° 04'.80 S 32° 04'.753 S	115° 44'.50 E 115° 44'.444 E
Delete	depth, 4 <sub>5</sub> m	32° 03'.57 S	115° 44'.16 E

**1166\* AUSTRALIA - WESTERN AUSTRALIA - Bunbury - McKenna Point - Light sector; depth**  
UKHO (AA426711)

**Aus 755 [1108/2009]**

Insert	accompanying block	33° 18'.0 S	115° 38'.5 E
--------	--------------------	-------------	--------------

**AX 0755E [1108/2009]**

Insert	accompanying block	33° 18'.0 S	115° 38'.5 E
--------	--------------------	-------------	--------------

**1167\* AUSTRALIA - SOUTH AUSTRALIA - Adelaide - Navline**  
UKHO (AA431600)

**Aus 137 [1110/2009]**

Insert	continuous line, between	34° 46'.932 S 34° 47'.434 S	138° 30'.923 E 138° 30'.806 E
Delete	dashed line, between	34° 46'.93 S 34° 47'.43 S	138° 30'.92 E 138° 30'.81 E

**1168\* AUSTRALIA - TASMANIA - Grassy Harbour - Depths**  
3D Marine Mapping (DHDB 1290917)

**Aus 178 (plan, Grassy Harbour) [1059/2009]**

Insert	accompanying block	40° 04'.0 S	144° 03'.5 E
--------	--------------------	-------------	--------------

**1169\* SOUTHERN OCEAN - Scientific instrument established**  
CSIRO (AA431845, AA431846), Marine and Safety Tasmania Notice M118/2009 (AA428184)

**Aus 4709 (INT 709) [1033/2006]**

Insert	special cylindrical light buoy, <i>Fl. Y.6s</i> , without topmark	46° 18'.9 S	140° 40'.0 E
--------	---	-------------	--------------

**1170\* AUSTRALIA - TASMANIA - Hobart - Restricted area limit**  
Australian Hydrographic Service (AA431289)

**Aus 172 [878/2009]**

Insert	restricted area limit, with magenta legend <i>Hobart Port Security Limit</i> , between	42° 53'.201 S	147° 20'.358 E
		42° 52'.962 S	147° 22'.043 E

**Aus 172 (plan, Sullivans Cove)**

Insert	restricted area limit, between	42° 53'.201 S	147° 20'.358 E
		42° 53'.145 S	147° 20'.750 E

**1171\* AUSTRALIA - TASMANIA - Blackman Bay to Georges Bay - Chart note**  
Australian Hydrographic Service (AA431287)

**Aus 169 (plan, Blackman Bay) [1061/2009]**

Delete	note, OMISSIONS FROM CHART, in N border	42° 49'.00 S	147° 53'.40 E
--------	---	--------------	---------------

**1172\* AUSTRALIA - VICTORIA - Barry Beach to Port Albert - Chart note**  
Australian Hydrographic Service (AA431288)

**Aus 182 (plan, Approaches to Barry Beach) [1067/2009]**

Delete	note, OMISSIONS, in N border	38° 42'.22 S	146° 23'.40 E
--------	------------------------------	--------------	---------------

**1173 AUSTRALIA - Product - Cumulative List of Australian Notices to Mariners - October 2009**  
Australian Hydrographic Service (AA365630)

The Cumulative List of Australian Notices to Mariners - October 2009 is issued as an accompanying supplement. It lists all permanent notices affecting charts in the Area of Australian Charting Responsibility published in the preceding two years since Edition 20 of 2007 dated 12 October 2007, and includes Edition 20 of 2009 dated 9 October 2009. It will be revised in April 2010.

From October 2009 a supplement, which will be revised fortnightly, will be available on the website.

**1174(P)/2009 AUSTRALIA - NEW SOUTH WALES - Cape Solander - Pilot boarding place trial eastwards***Date* - On or about 30 April 2009

Sydney Ports Corporation (AA432903)

A six month trial of the operation of a single pilot boarding place for Sydney Harbour and Botany Bay will be in force from 28 October 2009.

Pilot boarding and disembarkation operations at the pilot boarding place for Sydney Harbour will cease on 27 October 2009.

Pilot boarding for Sydney bound vessels will take place at Botany Bay pilot boarding place (34° 01'.2 S 151° 18'.7 E). Masters should note that the limit of compulsory pilotage area remains at the port limit and pilots will not take the conduct of the vessel until it approaches the port limit of Sydney Harbour.

Pilot disembarkation for vessels bound from Sydney will also take place at the Botany Bay pilot boarding place. Masters should note that pilots will hand over the conduct of the vessel as it passes the port limit of Sydney harbour.

**Chart which will be affected – Aus 197 – Aus 808 – AX 0808E - AU434151 - AU435151**

**1175(T)/2009 AUSTRALIA - NEW SOUTH WALES - Botany Bay - Scientific instrument recovered***Former Notice* - 1008(T)/2009 is cancelled

Cardno Lawson Treloar (AA432040)

Cancel this notice on receipt.

**Chart formerly affected – Aus 198 – Aus 199 - AU5198X9**

**1176(T)/2009 AUSTRALIA - NEW SOUTH WALES - Port Jackson - West Channel - Light beacon restored***Former Notice* - 47(T)/2007 is cancelled

Sydney Ports Corporation (AA433444)

Cancel this notice on receipt.

**Chart formerly affected – Aus 200 – Aus 201 – AX 63200**

**1177(T)/2009 AUSTRALIA - NEW SOUTH WALES - Cowan Creek - Refuge Bay - Raft removed**

NSW Maritime (AA433101)

The lit raft (33° 35'.96 S 151° 15'.01 E) has been removed; an unlit mooring buoy exists in situ.

**Chart temporarily affected – Aus 204 – Aus 217 - AU5XX204**

**1178(T)/2009 AUSTRALIA - QUEENSLAND - Moreton Bay - Spitfire Channel - Wreck salvaged southwards***Former Notice* - 1089(T)/2008 is cancelled

Maritime Safety Queensland Notice 613/2009 (AA429786, AA432042)

Cancel this notice on receipt.

**Chart formerly affected – Aus 235 – Aus 236 – Aus 814**

**1179(T)/2009 AUSTRALIA - QUEENSLAND - Moreton Bay - Ship to ship transfer***Date* - Until 31 December 2009

Maritime Safety Queensland Notice 662(T)/2009 (AA432007)

Ship to ship transfer of LPG will be conducted at STS1 anchorage. During transfer operations an exclusion zone (1850 metres radius) exists from position 27° 17'.15 S 153° 16'.56 E.

Brisbane Harbour will promulgate the commencement and completion of the transfer operations on VHF Ch 12.

**Chart temporarily affected – Aus 236**

9 October 2009

**1180(T)/2009 AUSTRALIA - QUEENSLAND - Moreton Bay - Russell Island - Harbour works***Date - Until 9 November 2009*

Maritime Safety Queensland Notice 643(T)/2009 (AA431938)

Harbour works associated with the extension to Russell Island jetty (27° 38'.73 S 153° 22'.86 E) are in progress.

Mariners are advised to navigate with caution in the area.

**Chart temporarily affected – Aus 236****1181(T)/2009 AUSTRALIA - QUEENSLAND - Moreton Bay - Wynnum - Obstruction removed***Former Notice - 435(T)/2009 is cancelled*

Maritime Safety Queensland Notice 613/2009 (AA429786, AA432042)

Cancel this notice on receipt.

**Chart formerly affected – Aus 236 - AU5237X8****1182(T)/2009 AUSTRALIA - QUEENSLAND - Brisbane River - Quarantine Flats Reach - Harbour works***Date - Until 31 October 2009*

Maritime Safety Queensland Notice 655(T)/2009 (AA431911)

Harbour works are in progress at the boat ramp (27° 25'.04 S 153° 08'.38 E).

Mariners are advised to navigate with caution in the area.

**Chart temporarily affected – Aus 237 – Aus 238 - AU5237X8****1183(T)/2009 AUSTRALIA - QUEENSLAND - Moreton Bay - Light beacon re-established***Former Notice - 1012(T)/2009 is cancelled*

Maritime Safety Queensland Notice 679/2009 (AA433066)

Cancel this notice on receipt.

**Chart formerly affected – Aus 236 – Aus 237 – Aus 814 - AU5237X8****1184(T)/2009 AUSTRALIA - QUEENSLAND - Moreton Bay - Pumicestone Channel - Wreck salvaged***Former Notice - 439(T)/2009 is cancelled*

Maritime Safety Queensland Notice 613/2009 (AA429786, AA432042)

Cancel this notice on receipt.

**Chart formerly affected – Aus 235 – Aus 236****1185(T)/2009 AUSTRALIA - QUEENSLAND - Point Cartwright - Live firing eastwards***Date - Until 22 October 2009*

Department of Defence (AA429331)

Military exercise area R677A will be activated for a live firing from 19 to 21 October 2009, in the area bounded by the following positions (WGS84 datum):

- 26° 20' S 154° 30' E
- 26° 20' S 155° 10' E
- 27° 00' S 154° 30' E
- 27° 00' S 155° 10' E.

**Chart temporarily affected – Aus 364 – Aus 365 – Aus 424**

**1186(T)/2009 AUSTRALIA - QUEENSLAND - Mooloolaba - Shoaling removed***Former Notice - 1013(T)/2009 is cancelled*

Maritime Safety Queensland Notice 666(T)/2009 (AA433223)

Cancel this notice on receipt.

**Chart formerly affected – Aus 235****1187(T)/2009 AUSTRALIA - QUEENSLAND - Arkwright Point - Scientific instrument***Former Notice - 1093(T)/2008 is cancelled*

Maritime Safety Queensland Notice 660(T)/2009 (AA431903)

A special light buoy, *Fl(5)Y.20s*, exists in position 26° 33'.95 S 153° 10'.90 E (WGS84 datum).

Mariners are not to use the buoy as a mooring.

**Chart temporarily affected – Aus 365****1188(T)/2009 AUSTRALIA - QUEENSLAND - Gladstone - North Passage Island - Scientific instruments***Date - Until 14 February 2010*

Maritime Safety Queensland Notice 645(T)/2009 (AA431934)

Subsurface scientific instruments exist in positions 23° 46'.00 S 151° 10'.45 E and 23° 45'.70 S 151° 10'.75 E.

Mariners are advised to navigate with caution in the area.

**Chart temporarily affected – Aus 245 – Aus 819 - AU424151 - AU5244X5****1189(T)/2009 AUSTRALIA - QUEENSLAND - Shoalwater Bay - Live firing***Date - Until 30 October 2009*

Maritime Safety Queensland Notice 681(T)/2009 (AA433303)

Live firing activities will be conducted in the Shoalwater Bay training area during the period 24 October to 29 October 2009.

A marine danger area extends to all waters south of the line defined by the following positions:

22° 23'.84 S 150° 18'.02 E

22° 22'.28 S 150° 15'.73 E

22° 21'.11 S 150° 17'.03 E

22° 18'.98 S 150° 33'.98 E.

All waters, creeks, beaches and other areas within the declared marine danger area are not available for access.

Mariners are advised to keep clear of this area throughout the above times.

**Chart temporarily affected – Aus 260 – Aus 261 – Aus 367 – Aus 822 – AX 0260E – AX 0367E – AX 0822E – AX 60260 – AX 67261 - AU423150 - AU5261P2**

**1190(T)/2009 AUSTRALIA - QUEENSLAND - Shoalwater Bay - Live firing***Date - Until 13 November 2009*

Maritime Safety Queensland Notice 680(T)/2009 (AA433301)

Live firing activities will be conducted in the Shoalwater Bay training area during the period 19 October to 23 October 2009 and 8 November to 12 November 2009.

A marine danger area extends to all waters south of the line defined by the following positions:

22° 23'.84 S 150° 18'.02 E  
 22° 15'.28 S 150° 38'.10 E  
 22° 19'.92 S 150° 45'.05 E  
 22° 29'.13 S 150° 49'.71 E  
 22° 39'.85 S 150° 54'.71 E  
 22° 41'.12 S 150° 50'.17 E.

All waters, creeks, beaches and other areas within the declared marine danger area are not available for access.

Mariners are advised to keep clear of this area throughout the above times.

**Chart temporarily affected – Aus 248 – Aus 260 – Aus 261 – Aus 367 – Aus 820 – Aus 822 – AX 0260E – AX 0367E – AX 0820E – AX 0822E – AX 60260 – AX 67248 – AX 67261 - AU423150 - AU5261P2 - AU5XX248**

**1191(T)/2009 AUSTRALIA - QUEENSLAND - Hay Point to Bailey Islet - Scientific instruments***Former Notice - 844(T)/2009 is cancelled*

Maritime Safety Queensland Notice 660(T)/2009 (AA431903)

Special light buoys, *F(5)Y.20s*, exist in positions:

21° 16'.32 S 149° 18'.70 E  
 21° 02'.40 S 149° 32'.76 E.

Mariners are not to use these buoys as moorings.

**Chart temporarily affected – Aus 249 – Aus 250 – Aus 251 – Aus 823 – Aus 824 – AX 0249E – AX 0823E - AU422149 - AU5250P2**

**1192(T)/2009 AUSTRALIA - QUEENSLAND - Townsville - Ross River - Harbour works**

Maritime Safety Queensland Notice 648(T)/2009 (AA432006)

Abutment works for the Townsville Port Access Road Bridge are in progress.

A port lateral light buoy, *F.I.R.2-5s*, exists in position 19° 16'.16 S 146° 50'.13 E, which marks the extremity of the works.

A silt curtain will enclose the reclamation works in preparation for the construction of the rock wall and bridge embankment. The works are expected to protrude approximately 50m into the river from the eastern bank and will be lit by flashing lights.

Mariners are advised to navigate with caution in the area.

**Chart temporarily affected – Aus 257 - AU5XX257**

**1193(T)/2009 AUSTRALIA - QUEENSLAND - Townsville - Dredging operations**

Date - Until 1 November 2009

Maritime Safety Queensland Notices 644(T)/2009, 657(T)/2009 (AA431939, AA431942)

The dredge *Brisbane* is conducting dredging operations in the channels, inner and outer harbour and swing basins within Townsville harbour.

The dredge will monitor VHF Ch 12 and Ch 16.

The special light buoys (19° 14'.60 S 146° 50'.35 E and 19° 14'.58 S 146° 50'.39 E) have been relocated 70m out of position.

Mariners are advised to navigate with caution in the area.

**Chart temporarily affected – Aus 257 - AU5XX257****1194(T)/2009 AUSTRALIA - QUEENSLAND - Townsville - Drilling operations**

Date - Until 20 October 2009

Maritime Safety Queensland Notice 651(T)/2009 (AA431941)

The jack-up barge *The Shine Barge* and support vessel *Suncraft* are conducting drilling operations in the following positions:

19° 14'.61 S 146° 50'.32 E  
 19° 14'.67 S 146° 50'.34 E  
 19° 14'.72 S 146° 50'.37 E  
 19° 14'.68 S 146° 50'.45 E  
 19° 14'.57 S 146° 50'.41 E  
 19° 14'.29 S 146° 50'.40 E  
 19° 14'.74 S 146° 50'.37 E.

The vessels will monitor VHF Ch 12 and Ch 16. Drilling operations will be planned to accommodate vessel movements in and out of berth 11 with no disruption to port operations expected.

Mariners are advised to navigate with caution in the area.

**Chart temporarily affected – Aus 257 - AU5XX257****1195(T)/2009 AUSTRALIA - QUEENSLAND - Karumba - Light buoys established**

Maritime Safety Queensland Notice 675(T)/2009 (AA433079)

Special light buoys, *Fl. Y.2-5s*, exist in the following positions:

17° 26'.63 S 140° 45'.02 E  
 17° 26'.74 S 140° 45'.23 E  
 17° 26'.44 S 140° 44'.91 E.

**Chart temporarily affected – Aus 6****1196(T)/2009 AUSTRALIA - WESTERN AUSTRALIA - Broome - Light buoy withdrawn**

Date - Until 27 October 2009

Broome Port Authority (AA431219)

The east cardinal light buoy (18° 00'.44 S 122° 12'.92 E) has been withdrawn; a port light buoy, *Oc.R.3s*, exists in situ.

**Chart temporarily affected – Aus 51**

**1197(T)/2009 AUSTRALIA - WESTERN AUSTRALIA - Dampier - Rock dumping**

Date - Until 31 December 2009

Dampier Port Authority Notice 26/2009 (AA431519)

The side stone dumping vessel *Popei* and fall pipe vessel *LA Boudeuse* will cover the Pluto pipeline with rock between 20° 36'.25 S 116° 45'.40 E and 20° 23'.76 S 116° 45'.10 E.

Vessels will monitor VHF Ch 11 and Ch 16.

**Chart temporarily affected – Aus 57 – Aus 58 – Aus 59 - AU5XXX58****1198(P)/2009 AUSTRALIA - WESTERN AUSTRALIA - Dampier - Light beacons to be established**

Date - On or about 2 November 2009

Dampier Port Authority Notice 28/2009 (AA433535)

Light beacons will be established in the following positions:

HP5	20° 32'.91 S	116° 42'.65 E
HP7	20° 33'.49 S	116° 42'.78 E
HPR1	20° 33'.23 S	116° 42'.56 E
HP21	20° 36'.40 S	116° 45'.30 E
HP22	20° 36'.52 S	116° 45'.41 E

The light beacons will be temporarily lit by Q lights.

**Chart which will be affected – Aus 57 – Aus 58 – Aus 59 - AU5XXX58****1199(T)/2009 AUSTRALIA - WESTERN AUSTRALIA - Point Cloates to Steep Point - Seismic survey**

Date - Until 21 December 2009

Searcher Seismic Pty Ltd (AA430663)

MV *Aquila Explorer*, with a 8000 metre towed array, will be conducting a survey in the area bounded by 22° 30'.0 S to 26° 30'.0 S and 110° 30'.0 E to 113° 20'.0 E (WGS84 datum).

**Chart temporarily affected – Aus 329 – Aus 330 – Aus 416 – Aus 4708 (INT 708) – AX 4708F - AU130090****1200(T)/2009 AUSTRALIA - SOUTH AUSTRALIA - Port Adelaide - Harbour works completed**

Former Notice - 110(T)/2009 is cancelled

Techport Australia (AA426702)

Cancel this notice on receipt.

**Chart formerly affected – Aus 130 – Aus 137****1201(T)/2009 AUSTRALIA - SOUTH AUSTRALIA - Port Stanvac - Offshore works**

Former Notice - 721(T)/2008 is cancelled

Department for Transport, Energy and Infrastructure Notice 43/2009 (AA431916)

Installation of infrastructure for a desalination plant are in progress in an area bounded by the following positions (WGS84 datum):

35° 06'.02 S	138° 28'.59 E
35° 05'.64 S	138° 27'.65 E
35° 05'.06 S	138° 27'.99 E
35° 05'.48 S	138° 29'.04 E.

The boundary is marked by special light buoys.

All vessels associated with the works will display appropriate lights and shapes.

Unauthorised vessels are prohibited from entering the area.

**Chart temporarily affected – Aus 125 – Aus 780 – Aus 781**

9 October 2009

**1202(T)/2009 AUSTRALIA - TASMANIA - Spring Bay - Harbour works***Date - Until 7 December 2009*

Marine and Safety Tasmania Notice M137/2009 (AA433353)

Remediation works on the dolphin (42° 32'.95 S 147° 55'.80 E) are in progress.

During the works the light will be unlit.

**Chart temporarily affected – Aus 170 – Aus 175 - AU443147 - AU5XX175****1203(T)/2009 AUSTRALIA - TASMANIA - Georges Bay - Buoy off station**

Marine and Safety Tasmania M129/2009 (AA431958)

The special buoy (41° 16'.18 S 148° 20'.27 E) is off station.

**Chart temporarily affected – Aus 169 - AU442148****1204(T)/2009 AUSTRALIA - TASMANIA - Georges Bay - Wreck***Former Notice - 1141(T)/2009 is cancelled*

Marine and Safety Tasmania Notice M135/2009 (AA433115)

A stranded wreck exists in position 41° 16'.24 S 148° 20'.07 E, with a floating line leading to an anchor in position 41° 16'.20 S 148° 20'.13 E.

Mariners are advised to navigate with caution in the area.

**Chart temporarily affected – Aus 169 - AU442148****1205(T)/2009 AUSTRALIA - VICTORIA - Barwon River - Bridge construction; exclusion zones; light buoys established**

Victorian Notice 133(T)/2009 (AA431931)

An exclusion zone exists around bridge construction works at the entrance to Barwon River.

An exclusion zone, marked by special buoys, exists in an area bounded by the following positions:

38° 16'.94 S 144° 29'.68 E

38° 16'.92 S 144° 29'.87 E

38° 16'.97 S 144° 29'.85 E

38° 16'.98 S 144° 29'.67 E.

Lateral light buoys have been established to mark the permitted transit lane through the exclusion zone. Construction work requirements will from time to time require the short term closure of the transit lane. Advice will be provided when the closures are to occur on Coast Radio Melbourne VHF Ch 67 at 0848 and 1448.

Vessels entering the river from Bass Strait may be able to berth at the Barwon Heads main jetty (38° 17'.06 S 144° 29'.76 E) while the transit lane is closed. Vessels looking to access Bass Strait from the river will need to anchor or beach nearby to wait for the transit lane to be opened. No berthing is allowed at any time at the jetty (38° 16'.75 S 144° 29'.77 E).

Mariners are advised to navigate with caution in the area.

**Chart temporarily affected – Aus 143 – Aus 144 – Aus 788 - AU439144**

**1206(P)/2009 AUSTRALIA - VICTORIA - Port Phillip - River Yarra - Lights established**

Date - On or about 1 October 2009

Port of Melbourne Corporation (AA433426 - AA433431), Victorian Notices 135/2009, 136/2009, 137/2009 (AA431893, AA431895, AA431896)

Lights have been established as follows:

	<i>Position</i>	<i>Characteristic</i>
31 South Wharf No51	37° 49'.23 S 144° 54'.98 E	<i>F.G &amp; Fl.G.2s</i>

## Swanson Dock

East Front	37° 48'.56 S 144° 54'.86 E	<i>F.Bu</i>
East Rear	38° 48'.47 S 144° 54'.86 E	<i>F.Bu</i>
Centre Front	37° 48'.56 S 144° 54'.83 E	<i>3F.G</i>
Centre Rear	37° 48'.46 S 144° 54'.83 E	<i>3F.G</i>
West Front	37° 48'.56 S 144° 54'.80 E	<i>F.Bu</i>
West Rear	37° 48'.46 S 144° 54'.81 E	<i>F.Bu</i>

Each set of leads bearing 001.9°

## 32 South Wharf

East Front	37° 49'.26 S 144° 54'.83 E	<i>F.Bu</i>
East Rear	37° 49'.30 S 144° 54'.83 E	<i>F.Bu</i>
Centre Front	37° 49'.27 S 144° 54'.80 E	<i>F.G</i>
Centre Rear	37° 49'.31 S 144° 54'.80 E	<i>F.G</i>
West Front	37° 49'.27 S 144° 54'.77 E	<i>F.Bu</i>
West Rear	37° 49'.32 S 144° 54'.77 E	<i>F.Bu</i>

Each set of leads bearing 181.9°

## Swanson Swinging Basin

Front	37° 49'.08 S 144° 54'.91 E	<i>F.Bu</i>
Rear	37° 49'.08 S 144° 54'.92 E	<i>F.Bu</i>

Leads bearing 056.7°

Note: A New Edition of Aus 154 will be published in due course.

**Chart which will be affected – Aus 154 - AU5XX154****1207(T)/2009 AUSTRALIA - TEMPORARY AND PRELIMINARY NOTICES**

Former Notice - 802(T)/2009 is cancelled

Australian Hydrographic Service (AA417777)

<i>Notice</i>	<i>Charts affected</i>	<i>Locality and Subject</i>
<b>850/2009</b>	Aus 487-AU340145	<b>BASS STRAIT</b> Drilling operations
<b>835/2008</b>	Aus 4060-4602	<b>CORAL SEA</b> Capel Bank to Nova Bank Shoaling Lihou Reef
<b>653/2001</b>	Aus 614	Shoals
<b>317/2006</b>	Aus 191	<b>NEW SOUTH WALES</b> Batemans Bay Shoaling; buoy Beecroft Peninsula
<b>1035/2008</b>	Aus 193-807-808-AX 0808E-60193-70193-AU5XX193	Light buoy off station
<b>715/2009</b>	Aus 198-199-AU5198X9	Botany Bay Light buoys moved
<b>1113/2009</b>	Aus 198-199-AU5198X9	Harbour works
<b>1114/2009</b>	Aus 198-199-AU5198X9	Pipeline
<b>1115/2009</b>	Aus 198-199-AU5198X9	Dredging operations; pipeline

## 1207(T)/2009 (continued)

<i>Notice</i>	<i>Charts affected</i>	<i>Locality and Subject</i>
<b>257/2009</b>	Aus 216-AU5XX204	<i>Brisbane Water</i> Light beacon destroyed
<b>887/2009</b>	Aus 197-808-809-AX 0808E-0809E-63200-AU434151	<i>Cape Baily to Ben Buckler</i> Scientific instruments
<b>746/2008</b>	Aus 197-808-AX 0808E	<i>Cape Banks</i> Scientific instruments northeastwards
<b>1174/2009</b>	Aus 197-808-AX 0808E-AU434151-435151	<i>Cape Solander</i> Pilot boarding place trial eastwards
<b>1177/2009</b>	Aus 204-217-AU5XX204	<i>Cowan Creek</i> Raft removed
<b>708/2008</b>	Aus 195-197-806-807-808-809-810-811-812-813-AX 0808E-0809E	<i>Green Cape to Ballina Head</i> Scientific instruments
<b>1009/2009</b>	Aus 197-200-201-AX 63200-AU5X200E	<i>Manly</i> Scientific instruments
<b>866/2008</b>	Aus 207-208-361-362-809-AX 0809E-AU433151-5XX208	<i>Newcastle</i> Obstructions
<b>773/2009</b>	Aus 207-208-AU5XX208	South Arm-Harbour works; dredging operations
<b>1070/2009</b>	Aus 207-208-AU5XX208	Depth information
<b>1036/2008</b>	Aus 197-198-808-AX 0808E-AU5198X9	<i>Point Long Nose</i> Offshore works
<b>208/2009</b>	Aus 808-AX 0808E-AU435151	<i>Port Hacking</i> Scientific instrument southeastwards
<b>454/2006</b>	Aus 202-AU5X200W	<i>Port Jackson</i> Shoaling
<b>650/2007</b>	Aus 200-203	Homebush Bay-Scientific instruments
<b>864/2008</b>	Aus 195-361-808-AX 0808E-AU435150-5XX194	<i>Port Kembla</i> Obstructions
<b>1069/2009</b>	Aus 194-AU5XX194	Depth information
<b>658/2009</b>	Aus 209-AU433152	<i>Port Stephens</i> Shoaling
<b>496/2009</b>	Aus 807-808-AX 0808E-AU435150	<i>Shoalhaven Bight</i> Unexploded ordnance
<b>NORTHERN TERRITORY</b>		
<b>662/2007</b>	Aus 28	<i>Darwin</i> Depth information
<b>222/2009</b>	Aus 24-AU5XXX24	Light buoy off station
<b>1078/2009</b>	Aus 26-28-722-AX 72026-72722-AU413130-5XXX24	Drilling operations
<b>790/2009</b>	Aus 20	<i>Melville Island</i> Reef delineation
<b>950/2004</b>	Aus 309-311-315	<i>Troubadour Shoals</i> Scientific instruments
<b>99/2009</b>	Aus 26-29-309-315-316-319-320-722-AX 0309F-0315F-0319F-72026-72309-72722-AU313125-313126-313127-313128-314123-314124-413129	<i>Charles Point to Browse Island (WA)</i> Scientific instruments
<b>460/2008</b>	Aus 255	<i>Abbot Point</i> Light buoy established
<b>664/2008</b>	Aus 255-826	Scientific instruments
<b>1044/2008</b>	Aus 255-AU5XX255	Harbour works
<b>1152/2008</b>	Aus 255-AU5XX255	Depth information

## 1207(T)/2009 (continued)

<i>Notice</i>	<i>Charts affected</i>	<i>Locality and Subject</i>
<b>819/2008</b>	Aus 252-253-268-AU5268P2	<i>Airlie Beach</i> Light buoys established
<b>1097/2008</b>	Aus 252-253-268-AU5268P2	Wreck
<b>214/2009</b>	Aus 252-253-268-AU5268P2	Wreck
<b>667/2009</b>	Aus 252-253-268-AU5268P2	Abel Point-Wreck
<b>729/2009</b>	Aus 4-701-AU413141	<i>Albatross Bay</i> Scientific instruments
<b>1187/2009</b>	Aus 365	<i>Arkwright Point</i> Scientific instrument
<b>968/2009</b>	Aus 830-AX 6027S-AU417145	<i>Arlington Reef</i> Wreck
<b>845/2009</b>	Aus 252-254-AU5254P2	<i>Black Island</i> Light beacon destroyed
<b>1090/2006</b>	Aus 238	<i>Brisbane River</i> Lights altered
<b>830/2007</b>	Aus 238	Cameron Rocks-Light unlit
<b>1132/2007</b>	Aus 237-238	Lytton Reach-Mooring blocks; pipeline
<b>751/2008</b>	Aus 237	Fisherman Islands-Harbour works
<b>810/2008</b>	Aus 237-238-AU5237X8	Depth information
<b>814/2008</b>	Aus 238-AU5237X8	Newstead-Harbour works
<b>1146/2008</b>	Aus 238-AU5237X8	Quarries Reach to Parker Island Reach-Harbour works
<b>1193/2008</b>	Aus 237-AU5237X8	Fisherman Islands-Harbour works
<b>436/2009</b>	Aus 237-AU5237X8	Pelican Banks Reach-Light buoy repositioned
<b>720/2009</b>	Aus 238-AU5237X8	Town Reach-Kangaroo Point-Wreck
<b>1182/2009</b>	Aus 237-238-AU5237X8	Quarantine Flats Reach-Harbour works
<b>657/2008</b>	Aus 242	<i>Bundaberg</i> Burnett River-Sea Reach-Light beacon destroyed
<b>1014/2009</b>	Aus 242-243-AU5XX242	Depth information
<b>1128/2009</b>	Aus 242-AU5XX242	Obstruction
<b>511/2009</b>	Aus 262-263-264-830-AX 63262- AU417145-5262X4	<i>Cairns</i> Depth information
<b>1075/2009</b>	Aus 262-263-264-830-AX 6027S-63262- AU417145-5262X4	Dredging operations
<b>620/2009</b>	Aus 235	<i>Caloundra</i> Rock outcrop
<b>957/2009</b>	Aus 235	Harbour works
<b>373/2007</b>	Aus 371-826-827	<i>Cape Bowling Green</i> Light buoy off station
<b>114/2008</b>	Aus 826-827	Scientific instrument
<b>1198/2008</b>	Aus 256-827-AU320147	<i>Cape Cleveland</i> Scientific instrument
<b>787/2009</b>	Aus 831-832-AU415145	<i>Cape Flattery</i> Wreck
<b>429/2009</b>	Aus 236-364-814	<i>Cape Moreton</i> Obstruction southeastwards
<b>430/2009</b>	Aus 235-364-365-814	Obstructions
<b>94/2009</b>	Aus 826-827-AU320147	<i>Cape Upstart</i> Wreck northwards
<b>755/2008</b>	Aus 371-372-827-828	<i>Cassady</i> Light beacon destroyed
<b>878/2006</b>	Aus 270	<i>Cooktown</i> Shoaling
<b>876/2008</b>	Aus 270-AU5270P6	Depth information
<b>1136/2009</b>	Aus 270-AU5270P6	Light buoy repositioned; light buoy established
<b>726/2009</b>	Aus 830-AU417145	<i>Double Island</i> Scientific instrument

## 1207(T)/2009 (continued)

<i>Notice</i>	<i>Charts affected</i>	<i>Locality and Subject</i>
<b>560/2009</b>	Aus 244-245-AU5244X5	<i>Gladstone</i> Harbour works; dredging operations
<b>721/2009</b>	Aus 245-AU5244X5	Calliope River-Scientific instruments
<b>896/2009</b>	Aus 244-245-246-AU425151-5244X5	Light buoys
<b>898/2009</b>	Aus 244-245-819-AU424151	Scientific instruments
<b>959/2009</b>	Aus 246-819-AU424151	Scientific instrument
<b>960/2009</b>	Aus 244-245-AU5244X5	Targinie Channel-Light buoy withdrawn
<b>1015/2009</b>	Aus 244-245-246	Depth information
<b>1188/2009</b>	Aus 245-819-AU424151-5244X5	Scientific instruments <i>Gold Coast Seaway</i>
<b>836/2009</b>	Aus 230	Shoaling
<b>837/2009</b>	Aus 230	Shoaling
<b>1099/2008</b>	Aus 828-AU419146	<i>Goold Island</i> Wreck
<b>964/2009</b>	Aus 249-250-AU5250P2	<i>Hay Point</i> Depth information
<b>965/2009</b>	Aus 249-250-AU5250P2	Depth information
<b>1191/2009</b>	Aus 249-250-251-823-824-AX 0249E-0823E-AU422149-5250P2	<i>Hay Point to Bailey Islet</i> Scientific instruments
<b>1111/2008</b>	Aus 819	<i>Heron Island</i> Scientific instruments
<b>930/2007</b>	Aus 254-825	<i>Hook Reef</i> Beacon destroyed
<b>166/2009</b>	Aus 367-820-AU323151	<i>Karamea Bank</i> Wreck
<b>937/2007</b>	Aus 6	<i>Karumba</i> Obstruction; buoy
<b>1051/2008</b>	Aus 6	Light beacon withdrawn
<b>512/2009</b>	Aus 6	Depth information
<b>1195/2009</b>	Aus 6	Light buoys established
<b>900/2009</b>	Aus 247-265-AU424150	<i>Keppel Bay</i> Scientific instruments
<b>391/2008</b>	Aus 813-814	<i>Kirra Point</i> Offshore works
<b>1052/2006</b>	Aus 252	<i>Laguna Quays</i> Reduced depth
<b>1305/2008</b>	Aus 247-819-820-AU424151	<i>Lisa Jane Shoals</i> Scientific instrument
<b>118/2008</b>	Aus 832	<i>Lizard Island</i> Scientific instruments
<b>463/2008</b>	Aus 259	<i>Lucinda</i> Light buoy repositioned
<b>724/2009</b>	Aus 250-AU5250P1	<i>Mackay</i> Harbour works
<b>966/2009</b>	Aus 250-AU5250P1	Depth information

## 1207(T)/2009 (continued)

<i>Notice</i>	<i>Charts affected</i>	<i>Locality and Subject</i>
<b>102/2007</b>	Aus 235-236	<i>Moreton Bay</i> Light sector partially undefined.
<b>694/2007</b>	Aus 235-236	Brisbane River-Depth information and keel clearances
<b>733/2007</b>	Aus 236	Tangalooma Point-Wreck: buoy
<b>774/2007</b>	Aus 236	Scarborough-Shoaling
<b>710/2008</b>	Aus 235-236	Spitfire Channel-Light buoys established
<b>750/2008</b>	Aus 236	Banana Bank-Light beacon damaged
<b>1091/2008</b>	Aus 236	Redcliffe-Scientific instrument southeastwards
<b>84/2009</b>	Aus 236	Rous Channel-Shoaling
<b>87/2009</b>	Aus 236-AU5237X8	Wynnum-Shoaling
<b>321/2009</b>	Aus 236-AU5237X8	Manly-Light beacon established
<b>377/2009</b>	Aus 235-236	Skirmish Passage-Wreck
<b>380/2009</b>	Aus 236-814	Bramble Bay-Bridge construction
<b>660/2009</b>	Aus 235-236-814	North East Channel-Light buoys off station
<b>661/2009</b>	Aus 236	Redland Bay-Light beacon destroyed
<b>662/2009</b>	Aus 236	Cleveland Point-Light beacon unlit
<b>1071/2009</b>	Aus 236	Obstructions
<b>1117/2009</b>	Aus 236	North Stradbroke Island-Amity-Harbour works
<b>1119/2009</b>	Aus 236-AU5237X8	Manly-Harbour works; dredging operations
<b>1179/2009</b>	Aus 236	Ship to ship transfer
<b>1180/2009</b>	Aus 236	Harbour works
<b>786/2009</b>	Aus 258-AU5258P1	<i>Mourilyan</i> Depth information
<b>1244/2006</b>	Aus 268	<i>Pioneer Bay</i> Harbour works; light buoys.
<b>663/2008</b>	Aus 252-253-268	Dredging operations
<b>503/2009</b>	Aus 235-365	<i>Point Cartwright</i> Obstruction southeastwards
<b>1185/2009</b>	Aus 364-365-424	Live firing eastwards
<b>717/2009</b>	Aus 813-814	<i>Point Danger to Point Lookout</i> Scientific instruments
<b>1019/2009</b>	Aus 265-AU5247P1	<i>Port Alma</i> Depth information
<b>117/2008</b>	Aus 270	<i>Port Douglas</i> Depth information
<b>1135/2009</b>	Aus 270-AU5270P1	Light beacon withdrawn; light buoy established
<b>728/2009</b>	Aus 701	<i>Port Musgrave</i> Scientific instruments
<b>663/2009</b>	Aus 235	<i>Pumicestone Channel</i> Light buoy off station
<b>170/2009</b>	Aus 829-AU418146	<i>Rocky Point</i> Light beacon withdrawn
<b>665/2009</b>	Aus 426-612	<i>Saumarez Reefs</i> Wreck
<b>1189/2009</b>	Aus 260-261-367-822-AX 0260E-0367E-0822E-60260-67261-AU423150-5261P2	<i>Shoalwater Bay</i> Live firing
<b>1190/2009</b>	Aus 248-260-261-367-820-822-AX 0260E-0367E-0820E-0822E-60260-67248-67261-AU423150-5261P2-5XX248	Live firing
<b>671/2006</b>	Aus 701	<i>Skardon River</i> Shoaling
<b>890/2007</b>	Aus 701	Shoaling
<b>777/2009</b>	Aus 230	<i>Southport</i> Harbour works
<b>329/2009</b>	Aus 252-253-824-AU421149	<i>Surprise Rock</i> Light beacon destroyed
<b>311/2008</b>	Aus 367-426	<i>Swains Reef</i> Scientific instruments
<b>116/2008</b>	Aus 828	<i>Thread Shoal to Myrmidon Reef</i> Scientific instruments

## 1207(T)/2009 (continued)

<i>Notice</i>	<i>Charts affected</i>	<i>Locality and Subject</i>
<b>1025/2009</b>	Aus 293-299-AU5XX299	<i>Thursday Island</i> Depth information
<b>1248/2008</b>	Aus 256-257-AU5XX257	<i>Townsville</i> Light buoy
<b>967/2009</b>	Aus 256-257-AU5XX257	Depth information
<b>1024/2009</b>	Aus 256-257-AU5XX257	Dredging operations
<b>1133/2009</b>	Aus 257-AU5XX257	Ross Creek-Light beacons withdrawn; light buoys established
<b>1134/2009</b>	Aus 256-257-AU5XX257	Obstruction
<b>1192/2009</b>	Aus 257-AU5XX257	Harbour works
<b>1193/2009</b>	Aus 257-AU5XX257	Dredging operations
<b>1194/2009</b>	Aus 257-AU5XX257	Drilling operations
<b>446/2009</b>	Aus 830-AU417145	<i>Upolu Reef</i> Obstructions
<b>1103/2008</b>	Aus 4-AU5XX4P1	<i>Weipa</i> Depth information
<b>SOUTH AUSTRALIA</b>		
<b>830/2008</b>	Aus 130-780-781	<i>Barker Inlet</i> Shoaling
<b>1161/2008</b>	Aus 125	<i>Glenelg</i> Shoaling
<b>458/2009</b>	Aus 125-781	Restricted area; light buoys
<b>456/2009</b>	Aus 130-138-780-781-AU435138-5137X8	<i>Largs Bay</i> Light buoy off station
<b>452/2002</b>	Aus 127	<i>Margaret Brock Reef</i> Structure
<b>414/2008</b>	Aus 344-778	<i>Mundoorra Bay</i> Light beacon unlit
<b>520/2009</b>	Aus 347	<i>Murray River</i> Dredging operations; exclusion zone
<b>1208/2008</b>	Aus 343-AX 0343E	<i>Neptune Islands</i> Scientific instrument
<b>455/2009</b>	Aus 136-444-778	<i>Point Lowly</i> Light unreliable
<b>720/2008</b>	Aus 137	<i>Port Adelaide</i> Shoaling
<b>393/2009</b>	Aus 130-137	Wreck
<b>633/2009</b>	Aus 137-AU5137X8	Depth information
<b>265/2008</b>	Aus 344-778	<i>Port Augusta</i> Light beacon destroyed
<b>415/2008</b>	Aus 344-778	Two Hummock Point-Light beacon altered
<b>918/2009</b>	Aus 136-778	<i>Port Bonython</i> Light buoy unlit
<b>335/2009</b>	Aus 125-780-781	<i>Port Stanvac</i> Scientific instrument
<b>572/2009</b>	Aus 125-780-781	Pipeline
<b>1201/2009</b>	Aus 125-780-781	Offshore works
<b>921/2009</b>	Aus 780	<i>Port Willunga</i> Light buoy off station
<b>988/2008</b>	Aus 134-343-345-444-776-AX 0343E-0776E	<i>Taylor Island</i> Light unlit
<b>1170/2006</b>	Aus 120	<i>Thevenard</i> Light beacon destroyed, temporary light
<b>917/2009</b>	Aus 122	Beacon destroyed
<b>173/2008</b>	Aus 777	<i>Wallaroo</i> Light beacon destroyed
<b>176/2009</b>	Aus 777	Depth information
<b>1082/2009</b>	Aus 342-343-345-346-444-AX 0343E-AU336135	<i>Whidbey Isles to Kangaroo Island</i> Scientific instruments

## 1207(T)/2009 (continued)

<i>Notice</i>	<i>Charts affected</i>	<i>Locality and Subject</i>
<b>268/2008</b>	Aus 125	<i>Wirrina Cove</i> Shoaling
<b>832/2008</b>	Aus 345-780	<i>Yankalilla Bay</i> Light buoy off station
<b>TASMANIA</b>		
<b>112/2009</b>	Aus 767	<i>Ansons Bay</i> Beacon destroyed
<b>1086/2009</b>	Aus 167-168-AU5167X8	<i>Bell Bay</i> Light beacon destroyed
<b>922/2009</b>	Aus 163	<i>Burnie</i> Depth information
<b>979/2009</b>	Aus 164-AU5164P1	<i>Devonport</i> Depth information
<b>922/2005</b>	Aus 179-800	<i>Furneaux Group</i> Shoaling
<b>131/2008</b>	Aus 169	<i>Georges Bay</i> Shoaling
<b>978/2009</b>	Aus 169	Beacon destroyed
<b>1203/2009</b>	Aus 169-AU442148	Buoy off station
<b>1204/2009</b>	Aus 169-AU442148	Wreck
<b>509/2008</b>	Aus 171-172	<i>Hobart</i> Obstructions
<b>522/2009</b>	Aus 172	Depth information
<b>1083/2009</b>	Aus 177-792	<i>Macquarie Harbour</i> Scientific instruments
<b>417/2008</b>	Aus 355-766	<i>Maria Island</i> Scientific instrument eastwards
<b>416/2008</b>	Aus 171-173-174	<i>North West Bay</i> Wreck
<b>634/2009</b>	Aus 171	<i>Nubeena</i> Harbour works
<b>1142/2009</b>	Aus 167-799-AU442146-5167X8	<i>Port Dalrymple</i> Scientific instruments
<b>833/2008</b>	Aus 171-173-174-795	<i>River Derwent</i> Scientific instruments
<b>684/2009</b>	Aus 171-173-AU444147	Pipeline
<b>795/2009</b>	Aus 171	Hobart-Buoy established
<b>1085/2009</b>	Aus 167-799-AU442146-5167X8	<i>River Tamar</i> Port Dalrymple-Reclamation works
<b>574/2009</b>	Aus 173-174-795-AU444146	<i>Southport</i> Harbour works
<b>460/2009</b>	Aus 175	<i>Spring Bay</i> Depth information
<b>1202/2009</b>	Aus 170-175-AU443147-5XX175	Harbour works
<b>274/2009</b>	Aus 795-796	<i>Storm Bay</i> Scientific instruments
<b>TIMOR SEA</b>		
<b>982/2008</b>	Aus 314-319-4721-4722-AU313124	<i>Osborn Passage</i> Drilling operations
<b>476/2006</b>	Aus 312	<i>Sahul Banks</i> Scientific instruments
<b>223/2009</b>	Aus 312-4721-AX 0312F-4721F-AU311126	Navaid; racon non operational
<b>TORRES STRAIT</b>		
<b>1137/2009</b>	Aus 376-377-840-AX 60377-AU410143	<i>Stephens Islet</i> Wreck northwards
<b>1138/2009</b>	Aus 289-AU411141	<i>Varzin Passage</i> Depth anomalies

## 1207(T)/2009 (continued)

<i>Notice</i>	<i>Charts affected</i>	<i>Locality and Subject</i>
		<b>VICTORIA</b>
		<i>Barry Beach</i>
<b>1002/2004</b>	Aus 181-182	Shoaling
		<i>Barwon Head</i>
<b>1087/2009</b>	Aus 143-144-349-788-AU439144	Scuttling
		<i>Barwon River</i>
<b>1036/2007</b>	Aus 143-144	Lights trial
<b>1205/2009</b>	Aus 143-144-788-AU439144	Bridge construction; exclusion zones; light buoys established
		<i>Bass Strait</i>
<b>1041/2009</b>	Aus 357a-422-423	Pipeline
		<i>Corner Inlet</i>
<b>1213/2008</b>	Aus 181-357A-802-AU439146	Shoaling
<b>853/2009</b>	Aus 181-182-AU439146	Dredging operations
		<i>Lakes Entrance</i>
<b>799/2007</b>	Aus 357a	Scientific instrument
<b>741/2009</b>	Aus 182	Harbour works
		<i>Ninety Mile Beach</i>
<b>458/2007</b>	Aus 357a	Obstructions
		<i>Port Albert</i>
<b>800/2009</b>	Aus 181-182-AU439146	Shoaling
		<i>Port Phillip</i>
<b>351/2005</b>	Aus 143-144-158	South Channel-Shoaling
<b>796/2007</b>	Aus 143-158	South channel-Obstruction
<b>797/2007</b>	Aus 143-158	South Channel-Obstruction
<b>897/2007</b>	Aus 154	Port Melbourne-Shoaling
<b>997/2007</b>	Aus 154	Station Pier-Shoaling
<b>223/2008</b>	Aus 143-154-155	Port Melbourne-Princes Pier-Harbour works
<b>893/2008</b>	Aus 154-AU5XX154	River Yarra-Light beacon withdrawn
<b>1212/2008</b>	Aus 154-AU5XX154	River Yarra-Light buoys; restricted area
<b>115/2009</b>	Aus 157-AU439144	Clifton Springs-Harbour works
<b>230/2009</b>	Aus 154-AU5XX154	Port Melbourne-Depth information
<b>278/2009</b>	Aus 143-144-154-155-158-AU438144-439144-5XX154	Beacon upgrade works
<b>464/2009</b>	Aus 143-144-154-155-158-AU438144-439144-5XX154	Restricted areas
<b>465/2009</b>	Aus 153-157-AU5XX153	Depth information
<b>582/2009</b>	Aus 153-157-AU5XX153	Corio Quay-Harbour works
<b>636/2009</b>	Aus 154-AU5XX154	Port Melbourne-River Yarra-Harbour works
<b>926/2009</b>	Aus 154-AU5XX154	Swanson Dock-Harbour works
<b>928/2009</b>	Aus 143-158-AU439144	Rosebud-Harbour works
<b>981/2009</b>	Aus 154-AU5XX154	Port Melbourne-Swanson Dock-Harbour works
<b>982/2009</b>	Aus 154-155-AU438144-5XX154	Hobsons Bay-Harbour works
<b>1036/2009</b>	Aus 154-AU5XX154	Port Melbourne-River Yarra-Harbour works
<b>1037/2009</b>	Aus 154-AU5XX154	River Yarra-Harbour works
<b>1089/2009</b>	Aus 154-155-AU438144-5XX154	Williamstown-Harbour works
<b>1090/2009</b>	Aus 143-155-AU438144	St Kilda-Dredging operations
<b>1143/2009</b>	Aus 143-144-158-AU439144	Great Ship Channel-Diving operations
<b>1144/2009</b>	Aus 143-144-154-155-158-AU438144-439144-5XX154	South Channel-Light beacons to be established
<b>1145/2009</b>	Aus 154-AU5XX154	Williamstown-Diving operations
<b>1206/2009</b>	Aus 154-AU5XX154	River Yarra-Lights established
		<i>Western Port</i>
<b>514/2008</b>	Aus 150-151	Phillip Island-Shoaling northwards
		<b>WESTERN AUSTRALIA</b>
		<i>Albany</i>
<b>729/2006</b>	Aus 109	Light beacon; light buoy
		<i>Alkimos Reef</i>
<b>272/2009</b>	Aus 334-754-AX 0334E-0754E-66002-AU432115	Scientific instruments

## 1207(T)/2009 (continued)

<i>Notice</i>	<i>Charts affected</i>	<i>Locality and Subject</i>
<b>174/2009</b>	Aus 327-328-415-416-AX 0415F-AU320114	<i>Barrow Island</i> Seismic survey northwards
<b>893/2007</b>	Aus 50	<i>Broome</i> Wreck
<b>849/2009</b>	Aus 50-324	Gantheaume Bay-Obstruction , light buoy
<b>1079/2009</b>	Aus 50-51-324-AU418122	Electronic navigation aid trial
<b>1196/2009</b>	Aus 51	Light buoy withdrawn
<b>100/2009</b>	Aus 319-AX 0319F-AU314123	<i>Browse Island</i> Scientific instrument northwestwards
<b>101/2009</b>	Aus 319-AX 0319F-AU314123	Scientific instruments
<b>1034/2007</b>	Aus 57-58-59	<i>Dampier</i> Depth information
<b>218/2008</b>	Aus 57-58-59	Anchorage
<b>259/2008</b>	Aus 58-59	Light buoy established
<b>260/2008</b>	Aus 57-58-59	Dredging operations; exclusion zone
<b>911/2009</b>	Aus 57-58-741	Obstruction
<b>1081/2009</b>	Aus 57-58-59-AU5XXX58	Dredging operations
<b>1197/2009</b>	Aus 57-58-59-AU5XXX58	Rock dumping
<b>1198/2009</b>	Aus 57-58-59-AU5XXX58	Light beacons to be established
<b>523/2004</b>	Aus 327-415	<i>Dampier Archipelago</i> Scientific instruments northwestwards
<b>764/2008</b>	Aus 110-118-759	<i>Emu Point</i> Light
<b>779/2006</b>	Aus 119	<i>Esperance</i> Scientific instrument
<b>616/2008</b>	Aus 119	Depth information
<b>1158/2008</b>	Aus 119-762	Scientific instrument to be established
<b>976/2009</b>	Aus 119-AU5119P1	Light beacon destroyed
<b>745/2007</b>	Aus 114	<i>Fremantle</i> Scientific instruments
<b>470/2008</b>	Aus 112-113-AX 63112	Rous Head-Obstruction; submarine pipeline; light buoys
<b>273/2009</b>	Aus 112-754-AX 0754E-63112-66002	Anchorage
<b>452/2009</b>	Aus 112-113-AU5XX113	Dredging operations
<b>793/2009</b>	Aus 113-AU5XX113	Depth information
<b>975/2009</b>	Aus 112-113-AX 63112-AU5XX113	Harbour works
<b>1030/2009</b>	Aus 114-117-AX 70117-AU5111X4	Dredging operations
<b>518/2009</b>	Aus 334-335-755-756-AX 0334E-0755E-AU434115	<i>Geographe Bay</i> Scientific instrument
<b>946/2008</b>	Aus 81	<i>Geraldton</i> Depth information
<b>451/2009</b>	Aus 81-751	Light buoy off station
<b>570/2009</b>	Aus 81	Light buoy withdrawn
<b>1255/2008</b>	Aus 327	<i>Glomar Shoal</i> Scientific instruments northwards
<b>333/2009</b>	Aus 109-110-118-AU5XX109	<i>King George Sound</i> Scientific instruments
<b>453/2009</b>	Aus 114-117-AX 70117-AU5111X4	<i>Kwinana</i> Light unlit
<b>674/2009</b>	Aus 323-324	<i>Lacepede Channel to Cape Boileau</i> Scientific instruments
<b>102/2009</b>	Aus 319-320-729-AX 0319F-AU314123	<i>Maret Islands</i> Scientific instruments
<b>1306/2006</b>	Aus 63-328-743	<i>Mary Anne Island</i> Light re-established; characteristics altered.
<b>915/2009</b>	Aus 328-329-744-AU422114	<i>Muiron Islands</i> Oil field development northwestwards
<b>1256/2008</b>	Aus 327	<i>North Rankin</i> Scientific instrument

## 1207(T)/2009 (continued)

<i>Notice</i>	<i>Charts affected</i>	<i>Locality and Subject</i>
<b>108/2009</b>	Aus 328-329-744-AU422114	<i>North West Cape</i> Scientific instruments northwestwards
<b>680/2009</b>	Aus 328-329-744-AU422114	FPSO off station
<b>914/2009</b>	Aus 64-328-329-415-416-743-744-AX 0415F-AU321114-422114	Scientific instruments
<b>792/2009</b>	Aus 334-754-AX 0334E-0754E-0755E- 66002-AU332114-432115-433115	<i>Perth</i> Scientific instruments westwards
<b>1199/2009</b>	Aus 329-330-416-4708-AX 4708F- AU130090	<i>Point Cloates to Steep Point</i> Seismic survey
<b>827/2008</b>	Aus 54	<i>Port Hedland</i> Lights established
<b>1254/2008</b>	Aus 52-53-54-739-740	Scientific instruments
<b>331/2009</b>	Aus 52-53-54	Harbour works
<b>332/2009</b>	Aus 52-53-54	Dredging operations
<b>677/2009</b>	Aus 54-AU5XXX54	Light established
<b>1080/2009</b>	Aus 52-54-AU5XXX52	Depth information
<b>679/2009</b>	Aus 328-AU320115	<i>Rankin Bank</i> Scientific instruments
<b>734/2009</b>	Aus 57-58-59-327-328-415-416-741- 742-AX 0415F-AU320115-421115- 421116	<i>Rankin Bank to Dampier</i> Production wells; platform; pipeline to be established
<b>1029/2009</b>	Aus 57-58-59-327-328-741-742- AU421115-421116-5XXX58	Scientific instruments
<b>1157/2008</b>	Aus 334-754-AX 0334E-0754E-66002- AU432115	<i>Rottneest Island</i> Scientific instrument to be established
<b>103/2009</b>	Aus 43	<i>Scott Reef</i> Scientific instruments
<b>735/2009</b>	Aus 64-743-744-AU417145	<i>Thevenard Island to Ashburton Road</i> Scientific instruments
<b>1052/2008</b>	Aus 40-732-733	<i>Yampi Sound</i> Comber Rock-Buoy off station
<b>EAST TIMOR</b>		
<b>727/2006</b>	Aus 901	<i>Dili</i> Light unlit
<b>309/2005</b>	Aus 311-312-313-4721	<i>Pulau Jaco</i> Light unlit
<b>INDIAN OCEAN</b>		
<b>1135/2006</b>	Aus 4071	Scientific instruments
<b>800/2005</b>	Aus 607	Light beacon
<b>568/2009</b>	Aus 4070-4071	<i>Sumatera</i> Scientific instruments westwards
<b>PACIFIC OCEAN</b>		
<b>941/2008</b>	Aus 399-462-4622	Scientific instruments
<b>772/2009</b>	Aus 197-365-386-387-388-396-423-424- 426-462-489-809-4060-4601-4602-4603- 4604-4620-4621-4622-AX 0809E-4603F- 4604F-4620F-4621F-AU130120-130150- 160150-210150-220150-230150- 305146-308150-308151-334152- 406146-406147-407147-407148- 407149-407150-434151	Submarine cable

**1207(T)/2009** (continued)

<i>Notice</i>	<i>Charts affected</i>	<i>Locality and Subject</i>
		<b>PAPUA NEW GUINEA</b>
		<i>Bougainville Island</i>
<b>609/2008</b>	Aus 399-683-4622	Lights unlit
		<i>Cape Gazelle</i>
<b>557/2008</b>	Aus 545-554	Light unlit
		<i>Kimbe Island</i>
<b>406/2008</b>	Aus 547-4622	Light unlit
		<i>Lae</i>
<b>121/2008</b>	Aus 523	Wreck
<b>355/2008</b>	Aus 523	Light buoy established
		<i>Madang</i>
<b>967/2005</b>	Aus 646	Horizontal datum anomaly
		<i>Port Moresby</i>
<b>404/2008</b>	Aus 379-505-4620	Fish aggregation device southwards
		<i>Rantan Island</i>
<b>1102/2008</b>	Aus 399-AU407155	Light unlit
		<b>MISCELLANEOUS</b>
<b>1147/2009</b>		Summer time

## HYDROGRAPHIC REPORTS

<i>Locality</i>	<i>Report</i>	<i>Ship/Authority</i>	<i>Observer</i>
QLD- Gunga Shoal	Light buoy		AS Kamboj
WA- Fremantle	ENC data	Fremantle Pilots	

**NAVIGATION WARNINGS**

The following radio messages have been received during the period to 9 October 2009. Signal copies of these messages may be destroyed. It is recommended that the reprint of Navigational Warnings should be kept in a file or a book divided into areas. Cancellation should be made on receipt of signals and reprints.

Rigs on location other than those listed in the latest Section III summary are the subject of Radio Navigational Warnings. Rigs in transit will not be the subject of Warnings.

**AUSCOAST WARNING**

- 227 Drill rig *Songa Venus* in position 10° 42'.88 S 126° 03'.50 E. 2.5M clearance requested.  
 228 Drill rig *Songa Mercur* in position 19° 59'.63 S 115° 07'.85 E. 2.5M clearance requested.  
 229 Drill rig *Kan Tan IV* in position 39° 53'.07 S 145° 22'.14 E. 2.5M clearance requested.  
 230 Drill rig *Ensco 7500* in position 20° 25'.90 S 114° 20'.60 E. 2.5M clearance requested.  
 231 Special purpose vessel *Geowave Voyager* conducting seismic survey towing 4M cable in area 11° 49'.0 S to 14° 21'.0 S and 121° 04'.0 E to 123° 44'.0 E. 6M clearance requested.  
 232 Cancelled.  
 233 Cancelled.  
 234 Cancelled.  
 235 Cancelled.  
 236 Cancelled.  
 237 Mariners are requested to avoid rock lobster research activity from 8 OCT to 30 OCT 2009 in the following locations:  
 30° 54'.0 S to 31° 05'.0 S and 114° 54'.0 E to 115° 08'.0 E (Lancelin),  
 29° 55'.0 S to 30° 23'.0 S and 114° 31'.0 E to 114° 50'.0 E (Jurien),  
 29° 09'.0 S to 29° 33'.0 S and 114° 23'.0 E to 114° 43'.0 E (Dongara),  
 and west of the Aboilhos Islands to a depth of 50m.  
 238 Drill rig *Transocean Legend* in position 13° 40'.07 S 122° 40'.32 E. 2.5M clearance requested.

**NAVAREA X WARNINGS**

018 Cancelled.

Nil.

**Navigational warnings in force as at 090001UTC OCT 09.****Auscoast**

102 128 188 191 214 216 218 222 227 228 229 230 231 237 238

**Navarea X**

Nil.

**Summary of mobile drilling rigs as at 090001UTC OCT 09.**

<i>Name</i>	<i>Position</i>
Kan Tan IV	39° 53'.07 S 145° 22'.14 E
Songa Venus	10° 42'.88 S 126° 03'.50 E
Ocean Shield	10° 53'.58 S 126° 44'.35 E
West Triton	12° 41'.34 S 124° 31'.83 E
Transocean Legend	13° 40'.07 S 122° 40'.32 E
Atwood Eagle	19° 54'.48 S 115° 07'.55 E
Songa Mercur	19° 59'.63 S 115° 07'.85 E
Ensco 7500	20° 25'.90 S 114° 20'.60 E
Jack Bates	20° 03'.85 S 113° 35'.98 E
Ocean Epoch	21° 29'.97 S 114° 07'.61 E

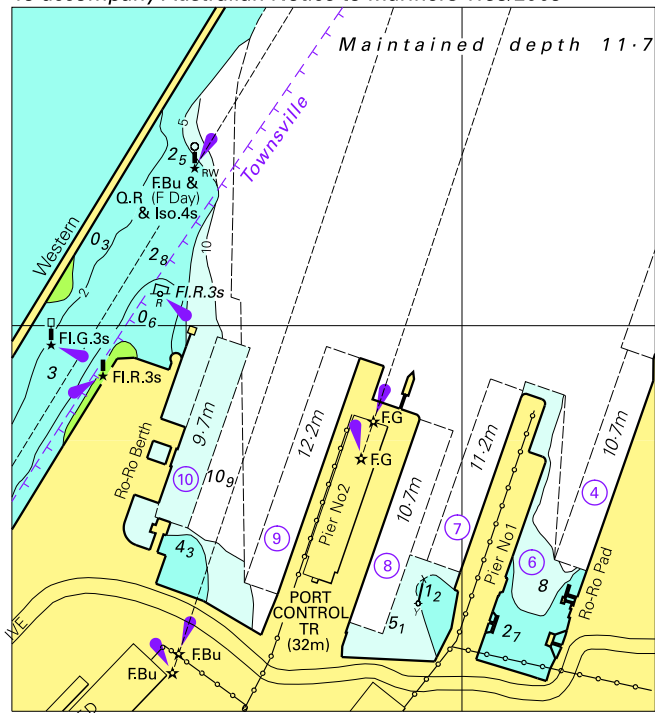
**NAVAREA XIV WARNINGS**

Nil.

**Navarea XIV warnings in force as at 090001UTC OCT 09.**

Nil.

To accompany Australian Notice to Mariners 1153/2009

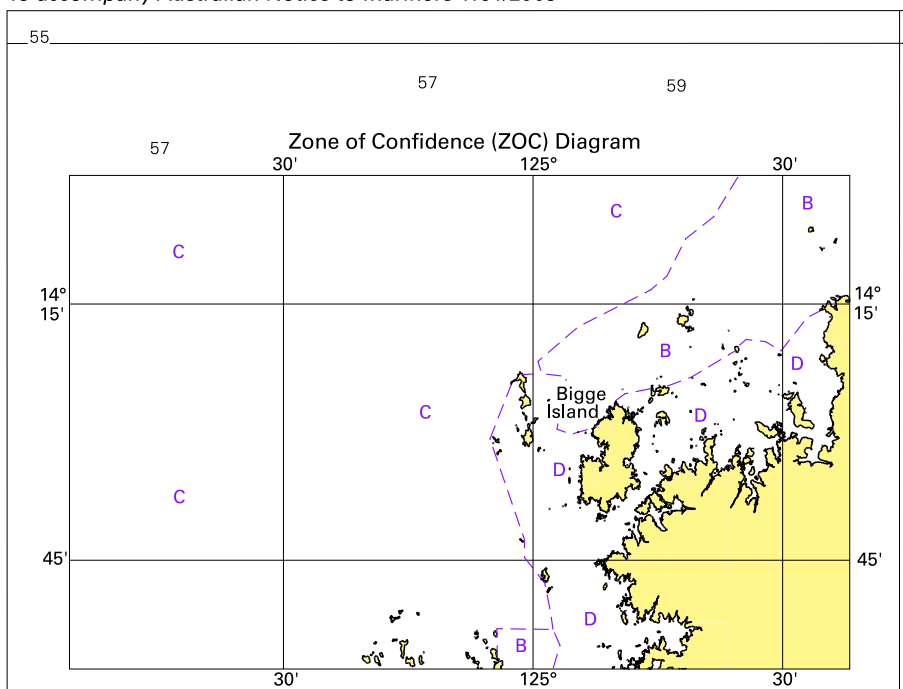


© Commonwealth of Australia 2009

Block for chart Aus 257

(85.1 x 93.1mm)

To accompany Australian Notice to Mariners 1161/2009

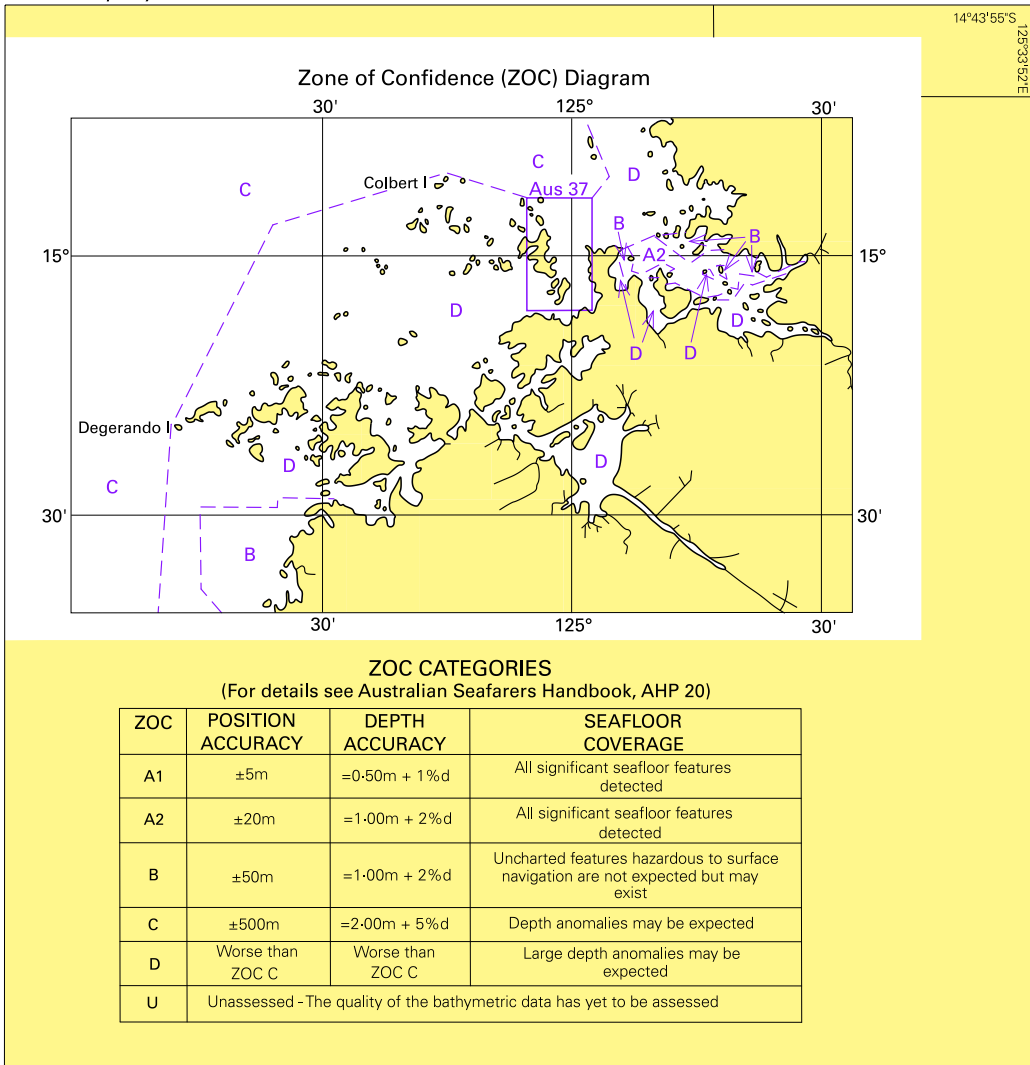


Block for chart Aus 729

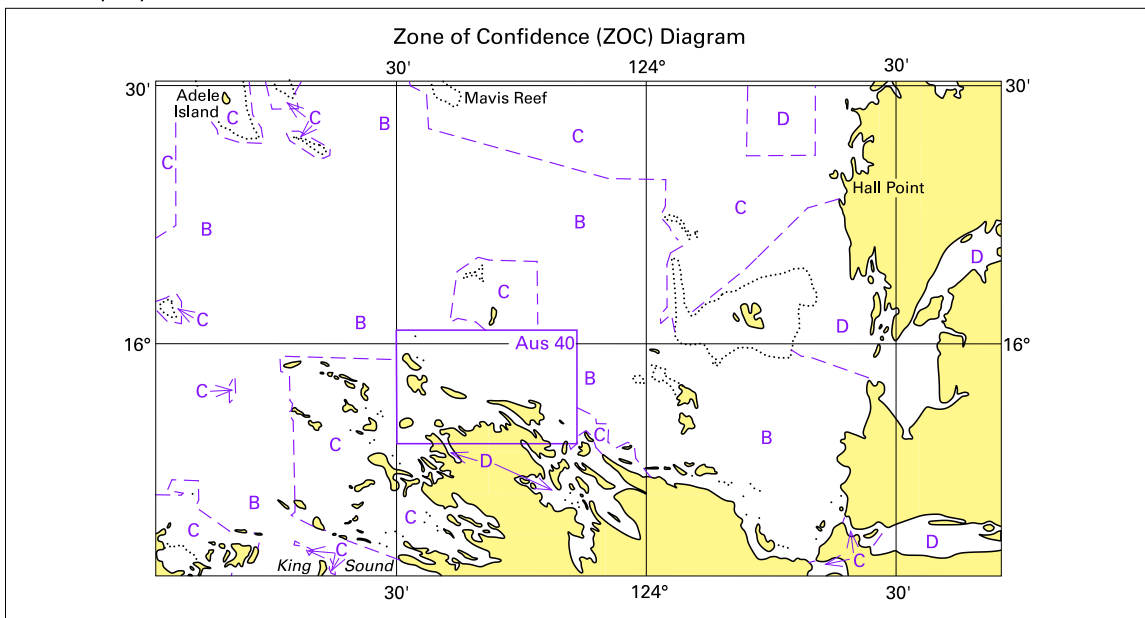
© Commonwealth of Australia 2009

(119.7 x 90.2mm)

To accompany Australian Notice to Mariners 1162/2009



To accompany Australian Notice to Mariners 1163/2009

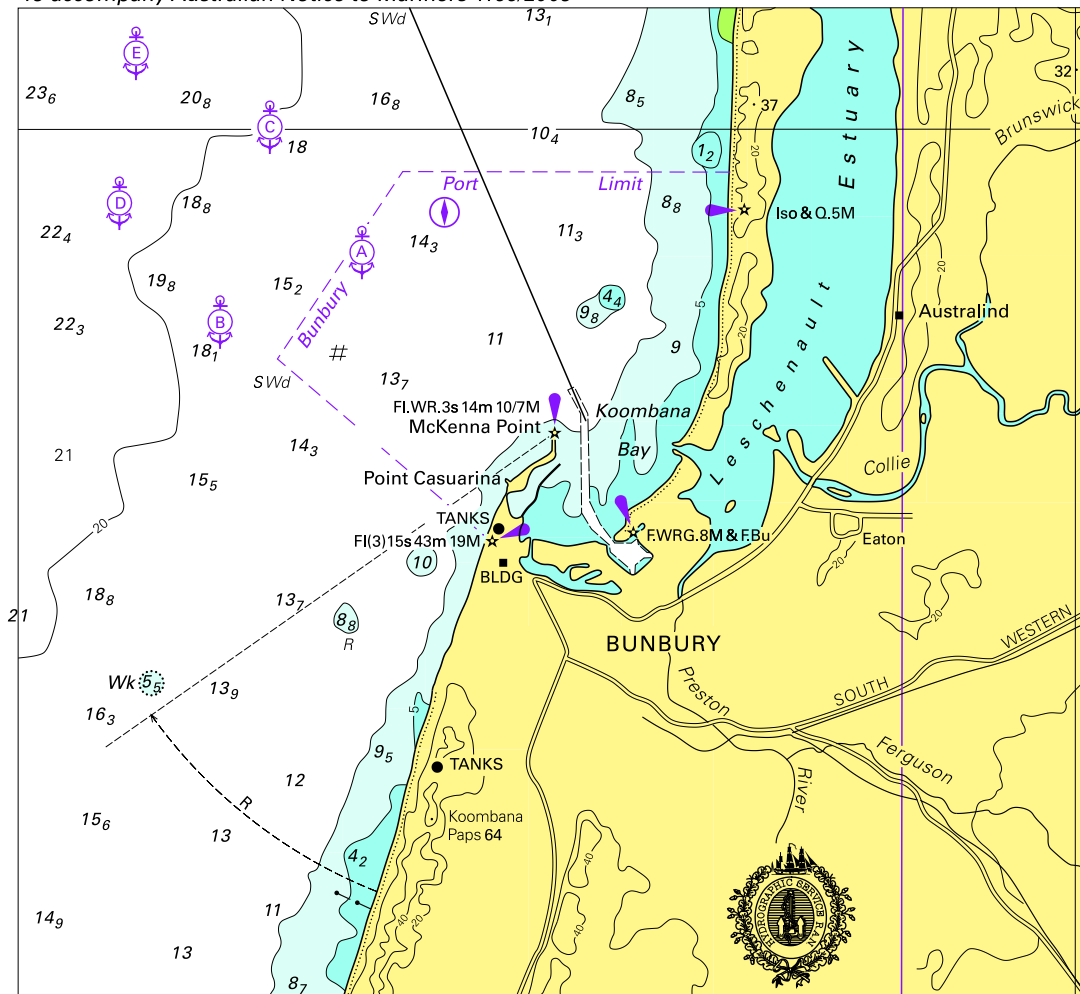


Block for chart Aus 732

© Commonwealth of Australia 2009

(151.2 x 81.5mm)

To accompany Australian Notice to Mariners 1166/2009

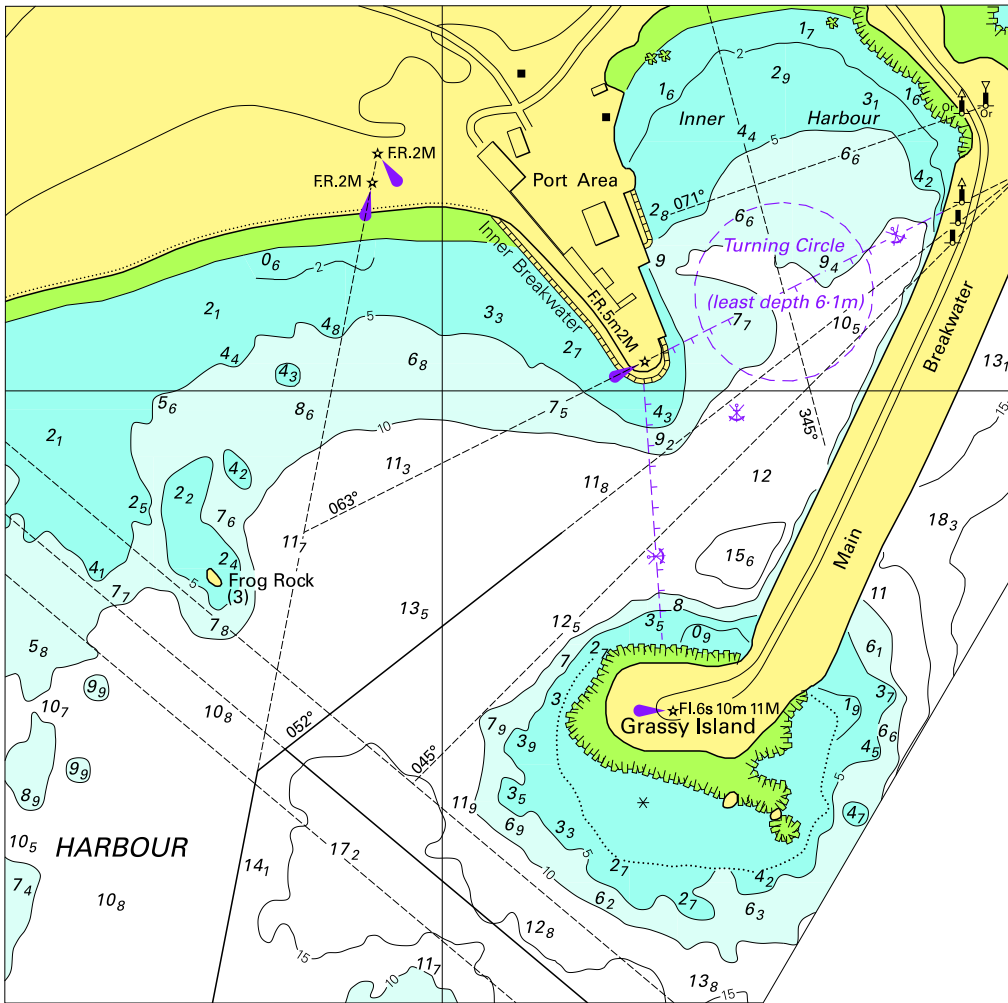


Block for chart Aus 755

© Commonwealth of Australia 2009

(140.9 x 130.7mm)

To accompany Australian Notice to Mariners 1168/2009



Block for Aus 178

© Commonwealth of Australia 2009

(133.8 x 131.8mm)

*To accompany Australian Notice to Mariners 1173/2009*

**CUMULATIVE LIST OF AUSTRALIAN  
NOTICES TO MARINERS  
OCTOBER 2009**

Prepared by the Australian Hydrographic Service  
by direction COMMODORE R. NAIRN RAN  
*Hydrographer of Australia*

## CUMULATIVE LIST OF AUSTRALIAN NOTICES TO MARINERS

### General Information

1. This list identifies, by its chart number and current edition, each Australian (Aus) navigational chart of the Australian Charting Area (see *Australian Notice to Mariners No 1 of 2009 and Australian Seafarers Handbook AHP20*).
2. Unless a Chart Correction Log (NP 133) is being used to perform a similar function, then, until a new edition is published in April 2010, this list should be corrected up to date from the information given in Section I of successive Editions of Australian Notices to Mariners by:
  - (a) adding new charts, each with its date of publication;
  - (b) amending the dates and deleting the listed Notices to Mariners for charts of which new editions have been published;
  - (c) deleting all reference to charts that have been withdrawn; and
  - (d) adding the numbers of the appropriate Notices to Mariners against each relevant chart.
3. All Notices to Mariners that have affected each chart during the last two years are listed against it. If the chart has not been affected by a notice during that period then the most recent notice, if any, is shown.
- 4.. An updated cumulative list will be published each fortnight on the AHS website.

### The Current Edition of a Chart

5. When a new chart is first published the date of publication is shown in the publication note that appears below the centre of the southern outer border; this date remains unchanged throughout successive new editions. The date of each new edition is printed on the chart a few centimetres to the right of the publication note.
6. A new edition on being published and issued as notified by a Notice to Mariners becomes the current edition and the previous edition is superseded. When a chart is withdrawn as directed by a Notice to Mariners there ceases to be any current edition of it. Withdrawn charts and superseded editions should not be used for navigation, nor should current editions that have not been corrected for relevant Notices to Mariners.
7. Users of this cumulative list are reminded that the authoritative source for information concerning current editions of charts and the corrections that affect them in the Australian Area are Editions of Australian Notices to Mariners.

<i>Chart Number</i>	<i>Current Edition</i>	<i>Notices to Mariners affecting the chart from Edition 20 dated 12 Oct 2007</i>
Aus 4	Feb 2009	<b>2009-865-945-</b>
Aus 6	May 2000	<b>2008-635-2009-149-482-</b>
Aus 13	May 2002	<b>2007-133-</b>
Aus 14	Oct 1996	<b>2009-244-</b>
Aus 15	Jun 1995	<b>2007-1115-2009-245-946-</b>
Aus 16	Aug 2001	<b>2006-261-</b>
Aus 17	Feb 2001	<b>2007-40-</b>
Aus 18	Nov 1995	<b>2008-1013-2009-300-704-</b>
Aus 20	Oct 1975	<b>2008-333-1075-2009-484-995-</b>
Aus 21	Jan 1992	<b>2009-301-</b>
Aus 22	Nov 2008	<b>2009-543-1159-</b>
Aus 23	Feb 2009	
Aus 24	Nov 2007	<b>2007-1117-2008-237-737-778-779-906-2009-247-599-825-867-</b>
Aus 26	Aug 2003	<b>2007-1060-1116-2008-46-238-289-334-737-848-906-908-1014-2009-247-599-705-825-867-996-1098-</b>
Aus 27	May 2008	<b>2008-778-907-1014-2009-825-867-1098-</b>
Aus 28	May 2008	<b>2008-778-907-2009-825-</b>
Aus 29	Jan 1997	<b>2008-290-637-1015-1124-2009-705-</b>
Aus 32	Feb 2004	<b>2008-1076-1227-2009-197-248-366-</b>
Aus 37	Jun 1950	<b>2003-599-</b>
Aus 40	Jan 2009	<b>2009-869-</b>
Aus 41	Oct 2008	<b>2009-57-869-</b>
Aus 43	Nov 2008	
Aus 44	May 2003	<b>2008-783-</b>
Aus 45	Mar 1999	<b>2007-871-</b>
Aus 50	Aug 1973	<b>2007-960-1012-1013-1063-2009-249-708-1100-</b>
Aus 51	Jul 2009	
Aus 52	Jan 1988	<b>2007-961-2008-911-959-1017-1179-1180-1181-1230-</b>
Aus 53	Aug 1987	<b>2007-961-2008-698-958-1016-1017-1179-1180-2009-602-709-</b>
Aus 54	Nov 2008	<b>2009-651-</b>
Aus 55	May 2002	<b>2008-239-240-581-789-852-1232-2009-153-603-763-828-1054-1101-</b>
Aus 56	Jul 2009	<b>2009-1055-1101-</b>
Aus 57	Feb 2009	<b>2009-420-</b>
Aus 58	Feb 2009	<b>2009-420-604-</b>
Aus 59	Nov 1987	<b>2007-1119-2008-190-192-1018-1019-1233-2009-58-250-368-545-999-</b>
Aus 61	Oct 2000	<b>2006-573-</b>
Aus 62	Aug 2004	<b>2008-960-</b>
Aus 63	Jan 2009	
Aus 64	Feb 2002	<b>2008-1234-2009-251-1000-</b>
Aus 72	Apr 1956	<b>2005-678-</b>
Aus 73	Nov 2008	<b>2009-198-</b>
Aus 74	Jan 2009	
Aus 81	Jul 2009	<b>2009-1056-</b>
Aus 84	Aug 2009	
Aus 105	May 1985	<b>2008-1022-2009-252-</b>
Aus 109	Nov 2003	<b>2007-916-2009-310-874-</b>
Aus 110	Jan 1983	<b>2008-1026-2009-156-310-</b>
Aus 111	Mar 1997	<b>2008-155-242-584-2009-654-1106-</b>
Aus 112	Jul 2002	<b>2008-49-194-241-964-1131-1185-1237-1285-2009-64-65-199-606-1105-1165-</b>
Aus 113	Jan 2009	<b>2009-370-1165-</b>
Aus 114	Nov 2003	<b>2008-796-1185-2009-654-</b>
Aus 115	Jan 1998	<b>2008-190-195-243-438-491-1024-1238-1286-2009-66-254-948-1107-</b>
Aus 116	Jun 1993	<b>2008-699-1132-2009-308-872-949-</b>
Aus 117	Sep 2004	<b>2008-49-155-292-293-1131-1185-2009-155-489-547-654-872-1106-1165-</b>
Aus 118	Jun 1983	<b>2008-378-741-797-1026-2009-874-</b>
Aus 119	Apr 2004	<b>2007-917-2009-371-875-950-</b>

<i>Chart Number</i>	<i>Current Edition</i>	<i>Notices to Mariners affecting the chart from Edition 20 dated 12 Oct 2007</i>
Aus 120	Jan 1976	<b>2008-244-2009-67-655-764-</b>
Aus 121	Nov 1978	<b>2008-196-1186-2009-1002-</b>
Aus 122	Oct 2008	<b>2009-201-655-</b>
Aus 125	Feb 1994	<b>2007-1121-2008-299-337-1080-1081-2009-830-</b>
Aus 127	Mar 2001	<b>2008-644-2009-609-</b>
Aus 130	Jun 2008	<b>2008-919-920-1079-2009-200-1110-</b>
Aus 134	Nov 2002	<b>2008-100-</b>
Aus 136	Apr 2000	<b>2007-874-1120-2008-50-2009-68-</b>
Aus 137	May 2008	<b>2008-1288-2009-159-312-423-1109-1110-1167-</b>
Aus 138	Nov 2007	<b>2008-296-297-494-535-</b>
Aus 139	Oct 2003	<b>2007-918-2008-102-493-534-588-2009-877-</b>
Aus 140	Mar 2001	<b>2007-963-2008-156-380-2009-712-</b>
Aus 141	May 2009	<b>2009-766-768-</b>
Aus 143	Apr 2007	<b>2007-1066-1067-2008-53-103-383-385-443-444-496-922-969-2009-162-426-553-612-714-769-1003-1004-1064-1065-</b>
Aus 144	Sep 2007	<b>2007-1066-2008-103-159-384-1085-2009-70-162-425-612-769-1003-</b>
Aus 148	May 2002	<b>2008-706-743-2009-314-1111-</b>
Aus 150	Mar 1995	<b>2007-1126-2008-387-445-539-593-862-971-2009-72-832-833-</b>
Aus 151	Feb 1994	<b>2008-445-540-593-1140-2009-72-204-833-</b>
Aus 152	Jun 1992	<b>2008-742-2009-204-</b>
Aus 153	Aug 2008	<b>2009-71-770-</b>
Aus 154	Feb 2008	<b>2008-497-861-1032-2009-162-552-883-884-953-1003-</b>
Aus 155	Apr 2007	<b>2007-1025-2008-103-385-497-1139-2009-162-426-657-882-1003-</b>
Aus 157	Mar 2009	<b>2009-1065-</b>
Aus 158	Apr 2007	<b>2008-52-53-103-159-384-386-443-496-922-1085-2009-70-162-425-612-769-1003-1004-</b>
Aus 163	Sep 1993	<b>2008-859-1084-2009-551-610-611-881-1063-</b>
Aus 164	Jun 1999	<b>2007-1065-2008-1084-2009-610-880-1063-</b>
Aus 167	Mar 1997	<b>2007-923-2008-51-703-2009-374-879-</b>
Aus 168	Oct 2002	<b>2007-923-924-1123-2008-338-704-1030-</b>
Aus 169	Jan 2005	<b>2007-964-2008-245-701-2009-203-1061-1171-</b>
Aus 170	Oct 2006	<b>2007-921-2008-381-442-536-801-968-</b>
Aus 171	Jan 2006	<b>2007-920-1023-2008-158-198-589-590-701-798-1289-2009-69-313-492-878-1061-</b>
Aus 172	Sep 2005	<b>2007-1122-2008-301-441-589-799-1188-2009-878-1170-</b>
Aus 173	Aug 2008	<b>2009-69-831-1060-</b>
Aus 174	Jun 2008	<b>2008-1083-1242-</b>
Aus 175	Mar 2008	<b>2008-1136-</b>
Aus 176	Mar 2008	<b>2008-858-921-2009-161-</b>
Aus 177	Aug 2001	<b>2008-300-2009-160-</b>
Aus 178	Jun 2002	<b>2008-339-537-2009-656-1059-1168-</b>
Aus 179	Jun 2002	<b>2009-493-</b>
Aus 181	Aug 1983	<b>2007-926-966-2008-645-744-973-2009-74-75-163-206-555-771-835-885-1066-</b>
Aus 182	Jan 1998	<b>2008-594-645-744-973-1141-1291-2009-207-494-613-771-834-1067-1172-</b>
Aus 191	Aug 2004	<b>2007-846-847-946-1046-2008-178-570-571-999-2009-234-352-353-528-529-586-</b>
Aus 192	Nov 2003	<b>2008-899-1062-2009-132-472-1092-</b>
Aus 193	May 2004	<b>2008-321-322-1062-1063-1064-1216-1217-</b>
Aus 194	Sep 2007	<b>2007-1048-1098-1099-2008-139-140-141-179-366-1218-2009-31-</b>
Aus 195	Nov 2008	
Aus 197	Aug 2001	<b>2007-1049-1101-2008-87-180-367-621-770-1065-2009-691-</b>
Aus 198	Jun 2005	<b>2007-901-2008-324-367-950-1000-2009-134-235-236-404-587-1150-</b>
Aus 199	Aug 1996	<b>2007-1102-2008-367-1000-2009-236-404-587-1150-</b>
Aus 200	Dec 1992	<b>2007-850-1050-2008-86-428-429-519-683-684-838-900-951-1168-1265-2009-33-530-531-806-</b>

<i>Chart Number</i>	<i>Current Edition</i>	<i>Notices to Mariners affecting the chart from Edition 20 dated 12 Oct 2007</i>
Aus 201	Jul 2001	<b>2007-1050-2008-86-1113-2009-530-</b>
Aus 202	Jul 2001	<b>2008-428-519-683-951-1113-2009-530-806-</b>
Aus 203	Jul 1994	<b>2007-850-2008-429-838-951-1265-2009-135-</b>
Aus 204	Mar 2002	<b>2007-948-2008-621-685-2009-282-283-</b>
Aus 207	Jul 2000	<b>2008-146-181-480-481-621-2009-745-</b>
Aus 208	Oct 1999	<b>2007-1003-2008-29-145-480-621-1114-1115-1219-2009-745-</b>
Aus 209	Apr 2001	<b>2008-182-2009-36-37-136-237-284-354-589-808-</b>
Aus 215	Nov 2002	<b>2007-947-1103-</b>
Aus 216	Nov 2001	<b>2009-283-</b>
Aus 217	Feb 2004	<b>2009-282-</b>
Aus 219	Aug 2001	<b>2007-949-2008-686-2009-590-692-746-747-932-</b>
Aus 220	Apr 2009	<b>2009-639-748-857-</b>
Aus 221	Mar 2009	<b>2009-532-641-691-985-1045-</b>
Aus 222	Mar 2009	
Aus 230	May 2009	<b>2009-859-1046-</b>
Aus 235	Jan 2009	<b>2009-533-749-813-934-</b>
Aus 236	Nov 2006	<b>2007-851-1051-2008-280-368-521-622-687-1117-1174-1266-2009-138-238-286-592-642-693-749-750-813-934-</b>
Aus 237	Feb 2000	<b>2007-1105-2008-89-229-280-369-430-772-1002-1003-1174-2009-643-750-935-</b>
Aus 238	Aug 2006	<b>2007-1004-2008-773-1220-2009-239-935-</b>
Aus 240	Apr 2009	<b>2009-751-815-860-936-986-</b>
Aus 241	Apr 2009	<b>2009-752-816-</b>
Aus 242	Jan 2006	<b>2009-41-</b>
Aus 243	Jan 2006	<b>2009-40-</b>
Aus 244	Apr 2007	<b>2008-30-326-370-623-725-1175-1267-2009-139-937-987-</b>
Aus 245	Apr 2007	<b>2007-854-902-1052-2008-30-326-370-482-623-725-953-1066-1175-2009-184-287-357-937-987-1047-1151-</b>
Aus 246	Jan 2006	<b>2007-902-2008-1175-2009-357-1047-1151-</b>
Aus 247	May 2006	<b>2008-184-573-626-726-727-728-774-1118-1268-2009-183-185-593-988-1048-1093-</b>
Aus 248	Sep 2004	<b>2007-425-</b>
Aus 249	Jun 2007	<b>2007-904-905-906-2008-327-574-1068-1221-2009-140-288-</b>
Aus 250	Jun 2007	<b>2007-903-904-952-2008-1005-1221-2009-42-140-288-</b>
Aus 251	May 2005	<b>2007-905-906-2008-327-432-2009-289-819-</b>
Aus 252	May 2005	<b>2007-1053-2008-1069-2009-1152-</b>
Aus 253	May 2005	<b>2007-1053-2008-1069-2009-290-</b>
Aus 254	Jun 2005	<b>2007-1054-2009-1094-</b>
Aus 255	Jul 2005	<b>2009-187-</b>
Aus 256	May 2005	<b>2008-90-433-575-2009-141-241-292-473-697-</b>
Aus 257	Nov 2008	<b>2009-188-241-473-697-698-754-1153-</b>
Aus 258	Jan 2006	<b>2008-91-484-</b>
Aus 259	Apr 2006	<b>2007-907-2009-293-474-645-756-1095-</b>
Aus 260	May 2005	<b>2008-1269-2009-696-861-</b>
Aus 261	May 2005	<b>2009-818-</b>
Aus 262	Jul 2005	<b>2007-908-</b>
Aus 263	May 2001	<b>2007-1055-2009-43-</b>
Aus 264	Oct 2001	<b>2007-1055-2009-43-699-</b>
Aus 265	Mar 2009	<b>2009-1048-1093-</b>
Aus 268	Jun 2005	<b>2007-512-</b>
Aus 270	May 2005	<b>2008-147-523-1270-2009-594-</b>
Aus 280	Jun 2005	<b>2009-408-475-</b>
Aus 281	Jul 2004	<b>2008-148-</b>
Aus 289	Mar 2003	<b>2009-823-</b>
Aus 292	Jun 2005	<b>2008-186-371-2009-51-147-363-481-540-541-647-990-</b>
Aus 293	Jun 1988	<b>2007-858-2008-149-186-729-2009-51-147-148-411-481-540-541-597-647-1096-</b>
Aus 294	Nov 1988	<b>2008-633-693-846-2009-363-481-540-1097-</b>
Aus 296	Nov 1988	<b>2007-860-1114-2008-186-236-1178-1276-2009-51-298-481-823-</b>

<i>Chart Number</i>	<i>Current Edition</i>	<i>Notices to Mariners affecting the chart from Edition 20 dated 12 Oct 2007</i>
Aus 299	Apr 2009	<b>2009-703-940-</b>
Aus 301	Apr 1990	<b>2008-436-2009-363-412-480-541-1097-</b>
Aus 302	Jun 1992	<b>2008-634-</b>
Aus 303	May 1999	<b>2008-635-2009-149-150-1051-</b>
Aus 304	May 2000	<b>2007-191-</b>
Aus 305	Jun 1997	<b>2006-512-</b>
Aus 306	May 2008	<b>2008-847-905-2009-1157-</b>
Aus 308	Sep 2003	<b>2008-848-956-1013-2009-299-598-704-705-866-1158-</b>
Aus 309	Jun 2008	<b>2008-848-956-957-1226-1277-2009-53-151-196-364-484-543-997-1159-</b>
Aus 310	Apr 2008	<b>2009-152-364-</b>
Aus 311	May 2008	<b>2008-781-1123-</b>
Aus 312	Apr 2008	<b>2009-365-</b>
Aus 313	May 2008	<b>2009-648-947-998-</b>
Aus 314	May 2008	<b>2008-782-785-1228-1279-1280-2009-762-1160-</b>
Aus 315	May 2008	<b>2008-780-</b>
Aus 316	Oct 1990	<b>2008-695-1278-2009-826-</b>
Aus 317	May 2008	<b>2008-784-785-2009-706-</b>
Aus 318	Nov 1989	<b>2007-864-2008-638-788-850-2009-600-649-826-827-</b>
Aus 319	May 2008	<b>2008-738-783-850-1228-2009-649-762-1160-</b>
Aus 320	Dec 1989	<b>2007-866-867-868-958-2008-47-488-533-851-2009-304-649-1099-</b>
Aus 321	May 2008	<b>2008-784-1229-1280-1281-2009-415-648-</b>
Aus 322	May 2008	<b>2009-55-</b>
Aus 323	Nov 1995	<b>2007-869-2008-697-1128-2009-601-</b>
Aus 324	Jan 1975	<b>2007-1012-2009-249-601-</b>
Aus 325	Nov 1966	<b>2009-650-</b>
Aus 326	Jun 1986	<b>2008-190-1129-2009-367-650-870-</b>
Aus 327	Aug 1967	<b>2008-48-190-193-791-853-960-1183-1282-2009-710-</b>
Aus 328	Dec 1985	<b>2008-190-740-792-793-794-960-1077-1130-1183-2009-61-306-421-652-653-829-871-</b>
Aus 329	May 1967	<b>2007-872-2008-583-740-914-2009-61-711-</b>
Aus 330	Oct 1968	<b>2009-62-</b>
Aus 331	Sep 1968	<b>2008-99-2009-62-</b>
Aus 332	May 1988	<b>2008-190-855-963-2009-422-</b>
Aus 333	May 1990	<b>2008-49-915-963-2009-422-488-</b>
Aus 334	Oct 2000	<b>2008-190-194-377-1286-2009-64-253-872-</b>
Aus 335	Dec 1988	<b>2008-916-965-1286-1287-2009-200-</b>
Aus 336	Aug 1984	<b>2008-190-965-1027-1287-2009-200-</b>
Aus 337	Mar 2000	<b>2008-190-</b>
Aus 341	Jan 1997	<b>2008-918-2009-655-</b>
Aus 342	Mar 1997	<b>2009-372-876-</b>
Aus 343	Jun 1990	<b>2008-245-379-700-1240-2009-200-202-373-876-</b>
Aus 345	Mar 1992	<b>2008-245-298-337-439-700-919-1240-2009-202-550-</b>
Aus 346	Apr 1992	<b>2008-245-379-1240-</b>
Aus 347	Aug 2001	<b>2008-245-337-439-644-1134-2009-609-</b>
Aus 348	Nov 2001	<b>2007-1022-2008-644-1082-</b>
Aus 349	Jul 1975	<b>2009-255-612-713-</b>
Aus 357A	Sep 1983	<b>2007-967-2008-245-707-1189-1264-2009-73-74-</b>
Aus 363	Jan 1992	<b>2008-1112-1171-2009-38-</b>
Aus 364	Mar 1992	<b>2007-1051-2008-245-2009-640-694-749-750-</b>
Aus 365	Sep 1967	<b>2007-951-2008-281-572-2009-405-749-751-814-936-986-</b>
Aus 366	Jun 1991	<b>2007-1052-2008-183-184-185-573-626-688-2009-183-695-1093-</b>
Aus 367	May 2006	<b>2008-185-431-1119-1269-2009-183-695-696-</b>
Aus 376	Mar 2006	<b>2007-860-909-953-2008-232-485-901-1073-1120-1178-1224-1276-2009-50-143-295-363-409-476-480-541-820-1097-</b>
Aus 377	Jun 2006	<b>2007-953-2008-232-577-902-2009-295-476-820-821-863-941-</b>
Aus 378	Mar 2008	<b>2008-901-902-</b>
Aus 379	Jan 2008	<b>2008-283-2009-191-360-</b>
Aus 383	Nov 1995	<b>2008-150-526-630-2009-296-</b>

<i>Chart Number</i>	<i>Current Edition</i>	<i>Notices to Mariners affecting the chart from Edition 20 dated 12 Oct 2007</i>
Aus 386	Mar 2008	<b>2008-904-2009-361-535-702-</b>
Aus 387	Oct 2007	<b>2008-42-43-152-235-285-332-2009-48-535-702-822-</b>
Aus 388	Nov 1990	<b>2007-1112-2008-43-286-331-332-580-1072-1275-2009-49-539-</b>
Aus 389	Mar 2008	<b>2009-944-</b>
Aus 391	Feb 2008	<b>2008-736-777-955-</b>
Aus 392	Feb 2008	<b>2008-530-690-2009-410-944-</b>
Aus 393	May 2008	<b>2009-537-</b>
Aus 396	Feb 2008	<b>2009-47-361-</b>
Aus 397	Feb 2008	<b>2008-579-732-</b>
Aus 398	Feb 2008	<b>2008-690-735-844-</b>
Aus 399	Jul 1999	<b>2008-39-94-96-330-435-528-734-2009-362-1156-</b>
Aus 400	Aug 2003	<b>2007-1062-2009-486-</b>
Aus 402	Sep 1965	<b>2006-1085-</b>
Aus 414	Aug 1969	<b>2008-335-336-910-1125-2009-303-</b>
Aus 415	Jun 2008	<b>2008-853-913-961-1127-2009-59-421-829-</b>
Aus 416	Mar 1992	<b>2008-99-190-913-1283-2009-421-422-829-1001-</b>
Aus 417	Sep 2000	<b>2008-377-2009-422-488-</b>
Aus 422	Jan 2005	<b>2007-876-965-2008-382-442-495-800-967-1029-1135-1264-2009-74-205-375-490-610-612-951-</b>
Aus 423	Oct 2000	<b>2007-1049-2008-143-245-321-621-770-1062-1112-1166-1264-2009-805-951-</b>
Aus 424	Oct 2000	<b>2007-1049-1051-2008-143-245-281-325-621-1112-1116-1171-2009-640-751-805-985-1045-</b>
Aus 426	Feb 1997	<b>2007-855-1052-2008-231-327-1269-2009-696-751-</b>
Aus 442	Jan 1958	<b>2008-847-2009-245-598-</b>
Aus 444	May 1992	<b>2008-298-337-379-700-2009-202-548-</b>
Aus 449	Sep 1993	<b>2006-1085-</b>
Aus 450	Nov 1991	<b>2003-359-</b>
Aus 451	Jan 1992	<b>2005-765-</b>
Aus 452	Nov 2002	<b>2005-765-</b>
Aus 454	Oct 1998	<b>2005-277-</b>
Aus 462	Nov 1992	<b>2007-859-2008-97-151-188-331-531-690-691-692-2009-49-194-539-944-</b>
Aus 487	Jan 2005	<b>2008-382-967-1290-2009-73-74-205-375-610-612-951-</b>
Aus 489	May 2009	<b>2009-807-</b>
Aus 502	Dec 1992	<b>2008-32-628-2009-44-</b>
Aus 505	Feb 2007	<b>2007-910-1007-2008-629-1273-2009-144-191-</b>
Aus 506	Aug 2007	<b>2007-1009-2008-629-1273-</b>
Aus 507	Mar 2007	<b>2007-954-2008-233-524-2009-360-</b>
Aus 508	Mar 2008	<b>2008-1177-</b>
Aus 509	Oct 2007	<b>2008-150-329-524-</b>
Aus 510	Feb 2007	<b>2008-33-150-</b>
Aus 511	Feb 2007	<b>2008-150-</b>
Aus 512	Nov 2007	<b>2008-525-689-1222-1274-2009-1050-</b>
Aus 513	Jan 2007	<b>2008-33-150-329-524-</b>
Aus 514	Jun 1995	<b>2008-527-631-1223-</b>
Aus 515	Mar 2007	<b>2008-234-</b>
Aus 516	Jan 2007	<b>2008-92-731-</b>
Aus 517	Jan 2007	<b>2007-723-</b>
Aus 518	Feb 2002	<b>2007-955-2008-33-524-</b>
Aus 519	Jan 2003	<b>2007-955-2008-34-731-</b>
Aus 520	Jan 2003	<b>2008-34-578-841-</b>
Aus 521	Jan 2003	<b>2008-35-730-</b>
Aus 522	Jan 2003	<b>2009-942-</b>
Aus 523	Dec 1991	<b>2008-36-2009-45-942-992-1155-</b>
Aus 539	Oct 1999	<b>2008-845-2009-537-</b>
Aus 543	Nov 2007	<b>2009-410-537-</b>
Aus 545	Feb 2007	<b>2007-911-1109-2008-733-</b>
Aus 546	Oct 2007	<b>2008-187-2009-478-759-993-</b>
Aus 547	Oct 2007	<b>2009-46-47-993-</b>
Aus 548	Oct 2007	
Aus 554	Feb 2007	<b>2008-38-732-733-843-2009-146-193-</b>
Aus 597	Oct 2006	<b>2009-158-</b>

<i>Chart Number</i>	<i>Current Edition</i>	<i>Notices to Mariners affecting the chart from Edition 20 dated 12 Oct 2007</i>
Aus 600	Feb 2007	<b>2008-440-</b>
Aus 601	Apr 1999	<b>2005-809-</b>
Aus 602	Mar 2003	<b>2005-809-</b>
Aus 603	Nov 2002	<b>2005-548-</b>
Aus 604	Sep 2006	
Aus 605	Oct 2006	<b>2007-30-</b>
Aus 606	Jun 1991	<b>2009-305-</b>
Aus 607	Jun 1991	<b>2009-305-</b>
Aus 608	Jul 2007	<b>2007-1062-</b>
Aus 609	Jun 1995	<b>2009-356-</b>
Aus 610	Nov 2000	<b>2009-137-591-855-</b>
Aus 611	Oct 1998	<b>2007-180-</b>
Aus 612	Mar 1996	<b>2007-180-</b>
Aus 613	Mar 2001	<b>2005-809-</b>
Aus 614	Feb 1994	<b>2007-180-</b>
Aus 615	Mar 2001	<b>2005-809-</b>
Aus 616	Jun 2000	<b>2009-534-</b>
Aus 617	Mar 2001	<b>2008-954-2009-407-</b>
Aus 618	May 1999	<b>2009-933-</b>
Aus 621	Mar 2005	<b>2007-1007-2008-486-2009-144-145-190-</b>
Aus 622	Nov 2004	<b>2007-756-</b>
Aus 623	May 2007	<b>2007-1008-1106-</b>
Aus 624	Apr 2007	<b>2007-518-</b>
Aus 625	Jun 2007	
Aus 628	Jul 2000	<b>2008-329-</b>
Aus 631	May 1983	<b>2002-123-</b>
Aus 644	Jan 2003	<b>2009-992-</b>
Aus 645	Dec 2008	
Aus 646	Sep 2001	<b>2008-1071-2009-538-822-</b>
Aus 651	Jan 2008	
Aus 652	Feb 2008	
Aus 654	Oct 2005	<b>2008-36-689-776-777-</b>
Aus 662	Aug 2007	<b>2007-1110-2008-776-</b>
Aus 663	Mar 1984	<b>2002-268-</b>
Aus 665	Jun 2006	
Aus 666	Aug 2007	<b>2008-529-1070-2009-297-479-</b>
Aus 668	Sep 1985	<b>2007-815-</b>
Aus 669	Mar 2009	
Aus 672	Feb 2009	<b>2009-943-</b>
Aus 673	Feb 2007	<b>2008-285-903-2009-702-</b>
Aus 674	Jan 1975	<b>2009-46-47-</b>
Aus 676	Sep 1979	<b>2007-1107-1108-2008-37-40-2009-478-537-</b>
Aus 677	Jun 2007	<b>2009-46-47-</b>
Aus 679	Feb 1978	<b>2006-795-</b>
Aus 680	Jan 1997	<b>2008-733-2009-192-477-</b>
Aus 683	Jul 1999	<b>2008-93-94-2009-536-596-</b>
Aus 684	Jul 1999	<b>2008-39-</b>
Aus 700	Jul 1994	<b>2007-860-1114-2008-236-1008-1178-1224-1276-2009-363-541-542-1097-</b>
Aus 701	Feb 2009	
Aus 710	May 1996	<b>2005-851-</b>
Aus 715	Sep 1994	<b>2007-861-862-2008-694-847-2009-245-760-994-1157-</b>
Aus 716	Mar 2009	
Aus 717	Oct 2003	<b>2009-483-824-</b>
Aus 720	Aug 2001	<b>2007-351-</b>
Aus 721	May 2003	<b>2008-1013-2009-704-</b>
Aus 722	Jun 2003	<b>2007-1118-2008-737-848-906-956-957-2009-53-413-414-484-705-761-995-996-997-</b>
Aus 724	Jun 2003	<b>2008-1278-2009-414-</b>
Aus 725	Mar 2003	<b>2009-485-826-</b>
Aus 726	Apr 2003	<b>2009-826-</b>
Aus 727	Mar 2003	<b>2007-864-865-2008-532-2009-600-827-</b>
Aus 728	Mar 2003	<b>2007-865-866-2008-532-850-2009-600-649-</b>

<i>Chart Number</i>	<i>Current Edition</i>	<i>Notices to Mariners affecting the chart from Edition 20 dated 12 Oct 2007</i>
Aus 729	Feb 2003	<b>2007-866-2009-544-1161-</b>
Aus 730	Feb 2003	<b>2007-867-868-958-2008-47-437-487-851-2009-1162-</b>
Aus 732	Apr 2003	<b>2007-869-959-2008-739-2009-418-419-1163-</b>
Aus 733	Jan 2003	<b>2007-871-959-2008-739-2009-418-419-</b>
Aus 739	Jun 1986	<b>2008-190-698-1230-2009-602-</b>
Aus 740	Jun 1986	<b>2008-190-291-372-489-698-789-1017-1230-1232-2009-153-602-828-870-1101-</b>
Aus 741	Dec 1985	<b>2007-1119-2008-191-291-581-789-1017-1182-1232-1282-2009-153-828-1101-</b>
Aus 742	Apr 2005	<b>2007-1119-2008-190-960-1183-</b>
Aus 743	Oct 1993	<b>2008-190-582-960-1077-1183-2009-60-306-</b>
Aus 744	Sep 1998	<b>2007-1014-2008-374-583-740-793-2009-61-154-546-605-1102-</b>
Aus 745	May 1985	<b>2008-795-1021-</b>
Aus 747	Jul 2000	<b>2007-1015-2008-190-2009-63-</b>
Aus 748	Mar 1994	<b>2007-1016-2008-640-2009-369-1164-</b>
Aus 749	May 1993	<b>2008-190-2009-307-369-</b>
Aus 751	Nov 1986	<b>2008-49-490-641-1184-2009-422-1103-</b>
Aus 752	Aug 2009	<b>2009-1104-</b>
Aus 753	Aug 2009	
Aus 754	Jul 2002	<b>2008-194-377-2009-64-253-606-872-</b>
Aus 755	Jan 2009	<b>2009-872-1108-1166-</b>
Aus 756	Jan 2009	<b>2009-949-1108-</b>
Aus 757	Jan 2009	<b>2009-949-1057-</b>
Aus 758	Jan 2009	<b>2009-309-</b>
Aus 759	Jan 2009	<b>2009-1058-</b>
Aus 762	Jan 2009	<b>2009-371-607-</b>
Aus 763	Jan 2009	<b>2009-875-</b>
Aus 766	Apr 2007	<b>2007-921-922-965-2008-800-1243-2009-424-1062-</b>
Aus 767	Jan 2007	<b>2008-303-1243-2009-424-951-</b>
Aus 776	Nov 2002	<b>2008-101-700-</b>
Aus 777	Feb 2007	<b>2007-1017-1020-2008-101-245-</b>
Aus 778	Feb 2007	<b>2007-873-874-1018-1019-2008-245-2009-549-608-</b>
Aus 780	Oct 1967	<b>2007-918-962-2008-245-295-298-299-337-439-919-2009-830-1110-</b>
Aus 781	Jul 1980	<b>2007-919-962-1064-2008-295-298-493-643-919-2009-1110-</b>
Aus 786	Mar 1965	<b>2007-963-2008-380-2009-713-765-</b>
Aus 788	Jun 1996	<b>2007-1066-2008-383-538-591-1244-2009-162-612-765-</b>
Aus 789	May 2003	<b>2008-966-</b>
Aus 790	Nov 2004	<b>2008-339-2009-491-610-656-952-</b>
Aus 791	Nov 2004	<b>2008-967-2009-491-</b>
Aus 792	Jul 2008	<b>2008-967-</b>
Aus 793	Jul 2008	<b>2008-1029-1187-</b>
Aus 794	Aug 2008	<b>2008-1241-</b>
Aus 795	Aug 2008	<b>2009-69-831-</b>
Aus 796	Aug 2008	<b>2009-69-492-</b>
Aus 797	Jun 2008	<b>2008-1135-2009-767-1062-</b>
Aus 798	Feb 2003	<b>2007-527-</b>
Aus 799	Jun 1996	<b>2007-1065-2008-382-537-702-1084-2009-551-610-</b>
Aus 800	Aug 2002	<b>2008-304-2009-493-</b>
Aus 801	May 1996	<b>2007-1127-2008-541-592-972-1290-2009-205-375-554-832-</b>
Aus 802	Dec 1975	<b>2007-966-2008-705-972-1290-2009-73-74-205-314-375-555-</b>
Aus 805	Jun 2005	<b>2007-967-2009-164-315-</b>
Aus 806	Nov 2008	<b>2009-164-280-281-350-691-1092-</b>
Aus 807	Nov 2008	<b>2009-280-281-351-353-585-691-</b>
Aus 808	Jan 2001	<b>2007-846-848-900-1048-1049-1097-1101-2008-142-180-228-321-322-323-367-427-770-1062-1065-1110-1111-1167-1216-2009-31-133-691-</b>
Aus 809	Nov 2000	<b>2007-1049-1101-2008-87-144-146-479-621-1065-1169-2009-32-34-35-36-182-588-</b>
Aus 810	Mar 2006	<b>2008-1170-2009-34-36-38-355-691-</b>

<i>Chart Number</i>	<i>Current Edition</i>	<i>Notices to Mariners affecting the chart from Edition 20 dated 12 Oct 2007</i>
Aus 811	Mar 2006	<b>2009</b> -34-38-39-285-638-691-809-810-
Aus 812	Apr 2009	<b>2009</b> -641-691-810-985-1045-
Aus 813	Apr 2009	<b>2009</b> -691-811-856-858-
Aus 814	Sep 1987	<b>2007</b> -851-950-1051- <b>2008</b> -279-520-771-839-1001- <b>2009</b> -533-749-750-812-813-934-
Aus 817	Jan 1967	<b>2007</b> -852- <b>2008</b> -230-952- <b>2009</b> -40-814-
Aus 818	Mar 2006	<b>2007</b> -853-1005- <b>2008</b> -183-724- <b>2009</b> -183-
Aus 819	Mar 2006	<b>2007</b> -1052- <b>2008</b> -184-573-624-625-626-724-1066-1118- <b>2009</b> -183-695-988-1048-1093-
Aus 820	Mar 2006	<b>2008</b> -185-626- <b>2009</b> -183-695-988-
Aus 821	Mar 2006	<b>2009</b> -240-291-939-
Aus 822	May 2009	<b>2009</b> -753-817-938-989-
Aus 823	Jun 2007	<b>2007</b> -905-906- <b>2008</b> -231-327-574-1221- <b>2009</b> -140-240-289-644-
Aus 824	Mar 2006	<b>2007</b> -905-906-1053- <b>2008</b> -327-432- <b>2009</b> -186-240-289-644-
Aus 825	Mar 2006	<b>2007</b> -1054-
Aus 826	Mar 2006	<b>2008</b> -775-
Aus 827	May 2006	<b>2008</b> -775-
Aus 828	Apr 2006	<b>2008</b> -31-434- <b>2009</b> -645-
Aus 829	May 2006	<b>2008</b> -91-484-
Aus 830	Mar 2006	<b>2009</b> -142-406-862-
Aus 831	Mar 2006	<b>2008</b> -576-627-1006- <b>2009</b> -242-294-757-758-
Aus 832	Apr 2006	<b>2008</b> -576-1270-
Aus 833	Jun 2006	<b>2008</b> -1270-1271- <b>2009</b> -408-646-700-
Aus 834	Mar 2006	<b>2008</b> -148-1176-1272- <b>2009</b> -189-243-408-700-
Aus 835	Mar 2006	<b>2008</b> -1176-1272- <b>2009</b> -189-243-595-
Aus 836	Mar 2006	<b>2008</b> -1176-1272- <b>2009</b> -189-
Aus 837	Mar 2006	<b>2007</b> -857-953-1056- <b>2009</b> -476-
Aus 839	Mar 2006	<b>2008</b> -1120-1224- <b>2009</b> -50-143-363-409-647-990-
Aus 840	Nov 2003	<b>2007</b> -857-909-953-1006-1057- <b>2008</b> -232- <b>2009</b> -143-295-476-701-820-
Aus 901	Apr 2003	<b>2006</b> -703-
Aus 902	May 2003	<b>2005</b> -851-
Aus 903	May 2003	<b>2005</b> -851-
Aus 905	May 2003	<b>2005</b> -851-
Aus 920	Aug 2009	
Aus 4060	Sep 2004	<b>2007</b> -855-1051-1052-1062- <b>2008</b> -143-160-522-595-632-837-863-923-1073- <b>2009</b> -256-1005-1049-
Aus 4070	Sep 2004	<b>2007</b> -1062- <b>2008</b> -856-1126- <b>2009</b> -157-158-873-
Aus 4071	Sep 2004	<b>2007</b> -1062- <b>2008</b> -1126- <b>2009</b> -54-
Aus 4074	Sep 2004	<b>2008</b> -492- <b>2009</b> -158-
Aus 4601	Aug 2004	<b>2008</b> -143-160-321-446-837-863-1062-
Aus 4602	Sep 2004	<b>2007</b> -855-1051-1052- <b>2008</b> -143-321-522-837-1116- <b>2009</b> -256-1005-1049-
Aus 4603	Jun 2008	<b>2008</b> -632-909-1012-1073-1125- <b>2009</b> -59-194-246-365-868-944-1160-
Aus 4604	Jun 2008	<b>2008</b> -837-1121- <b>2009</b> -194-556-755-944-991-1005-
Aus 4620	Jan 2009	<b>2009</b> -358-407-755-820-863-864-942-992-
Aus 4621	Jun 2008	<b>2008</b> -840-842-1121- <b>2009</b> -291-359-376-407-755-991-1154-
Aus 4622	May 2008	<b>2008</b> -691-731- <b>2009</b> -45-49-194-376-539-942-944-992-1155-
Aus 4708	Jun 2008	<b>2008</b> -787-1125-1283- <b>2009</b> -59-417-707-829-
Aus 4709	Aug 2004	<b>2009</b> -1169-
Aus 4710	Aug 2004	
Aus 4714	Jun 2008	<b>2008</b> -856-917- <b>2009</b> -157-
Aus 4720	Jun 2008	<b>2008</b> -632-635-847-1011-1012-1073- <b>2009</b> -246-359-
Aus 4721	Jun 2008	<b>2008</b> -785-847-1074-1123-1228-1280- <b>2009</b> -152-195-302-364-365-648-868-998-1052-1160-
Aus 4722	Jun 2008	<b>2008</b> -696-785-786-849-853-1125-1127-1228-1280- <b>2009</b> -59-416-648-998-1053-1160-
Aus 4726	Jan 1992	<b>2009</b> -371-
Aus 4727	Jun 1994	<b>2008</b> -379-1133- <b>2009</b> -202-311-371-548-

<i>Chart Number</i>	<i>Current Edition</i>	<i>Notices to Mariners affecting the chart from Edition 20 dated 12 Oct 2007</i>
AX0110E	Jun 2009	
AX0117S	Jan 2008	
AX0118E	Jun 2009	
AX0193E	Jan 2008	<b>2008-1216-</b>
AX0193S	Nov 2007	<b>2008-1216-</b>
AX0249E	Jun 2009	
AX0260E	Jun 2009	
AX0306F	Sep 2008	
AX0309F	Sep 2008	<b>2008-1226-1277-2009-53-151-196-364-484-543-997-1159-</b>
AX0310F	Sep 2008	<b>2009-152-364-</b>
AX0311F	Sep 2008	
AX0312F	Sep 2008	<b>2009-365-</b>
AX0313F	Sep 2008	<b>2009-648-947-998-</b>
AX0314F	Sep 2008	<b>2008-1228-1279-1280-2009-762-1160-</b>
AX0315F	Sep 2008	
AX0317F	Sep 2008	<b>2009-706-</b>
AX0319F	Sep 2008	<b>2008-1228-2009-649-762-1160-</b>
AX0321F	Sep 2008	<b>2008-1229-1280-1281-2009-415-648-</b>
AX0322F	Sep 2008	<b>2009-55-</b>
AX0334E	May 2008	<b>2008-1286-2009-64-253-872-</b>
AX0343E	May 2008	<b>2008-1240-2009-200-202-373-876-</b>
AX0367E	Jun 2009	
AX0415F	Sep 2008	<b>2009-59-421-829-</b>
AX0754E	May 2008	<b>2009-64-253-606-872-</b>
AX0755E	Aug 2009	<b>2009-1108-1166-</b>
AX0776E	May 2008	<b>2008-700-</b>
AX0808E	May 2008	<b>2008-770-1062-1065-1110-1111-1167-1216-2009-31-133-691-</b>
AX0809E	May 2008	<b>2008-1065-1169-2009-32-34-36-182-588-</b>
AX0820E	Jun 2009	<b>2009-988-</b>
AX0822E	Jun 2009	<b>2009-938-989-</b>
AX0823E	Jun 2009	
AX4603F	Sep 2008	<b>2009-59-194-246-365-868-944-1160-</b>
AX4604F	Sep 2008	<b>2009-194-556-944-991-1005-</b>
AX4620F	Sep 2008	<b>2009-407-755-820-863-864-942-992-</b>
AX4621F	Sep 2008	<b>2009-291-359-376-407-755-991-1154-</b>
AX4708F	Sep 2008	<b>2008-1283-2009-59-417-707-829-</b>
AX4714F	Sep 2008	<b>2009-157-</b>
AX4720F	Sep 2008	<b>2009-246-359-</b>
AX4721F	Sep 2008	<b>2008-1228-1280-2009-152-195-302-364-365-648-868-998-1052-1160-</b>
AX4722F	Sep 2008	<b>2008-1228-1280-2009-59-416-648-998-1160-</b>
AX60105	May 2003	<b>2008-1022-</b>
AX60193	Oct 2004	<b>2008-321-322-1062-1063-1064-1216-1217-</b>
AX60260	Jun 2006	<b>2008-1269-2009-696-861-</b>
AX6027S	Sep 2008	
AX6028F	Aug 2009	
AX60377	Nov 2007	<b>2008-232-2009-295-476-821-863-941-</b>
AX62735	Jan 2004	
AX63112	Jun 2004	<b>2008-1131-1185-1237-1285-2009-64-65-199-606-1105-1165-</b>
AX63200	Sep 2005	<b>2008-1065-2009-530-</b>
AX63262	Jan 2006	<b>2007-908-</b>
AX66001	May 2007	
AX66002	Nov 2007	<b>2008-194-377-699-2009-64-253-606-872-</b>
AX66003	Aug 2007	<b>2008-901-1224-2009-50-143-</b>
AX66022	Nov 2007	
AX67192	Oct 2004	<b>2008-1217-</b>
AX67215	Aug 2005	<b>2007-635-</b>
AX67248	Feb 2006	<b>2007-425-</b>
AX67261	May 2003	<b>2007-425-</b>
AX70117	Sep 2004	<b>2008-292-293-1131-1185-2009-155-489-547-654-872-1106-1165-</b>
AX70193	Oct 2004	<b>2008-321-322-1062-1063-1064-1216-1217-</b>
AX72026	Jul 2005	<b>2007-1116-2008-238-289-737-848-906-908-1014-2009-247-599-705-825-867-996-1098-</b>
AX72309	Jul 2005	<b>2008-848-956-957-1226-1277-2009-53-151-196-364-484-543-1159-</b>
AX72722	Oct 2008	<b>2009-53-413-414-484-705-761-995-996-997-</b>