



Australian Notices to Mariners are the authority for correcting Australian Charts and Publications

# AUSTRALIAN NOTICES TO MARINERS

© Commonwealth of Australia 2009 - Copyright restrictions apply to Notices to Mariners

## Notices 28 – 127 List of Temporary and Preliminary Notices in Force

Published fortnightly by the Australian Hydrographic Service

Commodore R. NAIRN RAN  
*Hydrographer of Australia*

- SECTIONS.**
- I. **Australian Notices to Mariners, including blocks and notes.**
  - II. **Hydrographic Reports.**
  - III. **Navigational Warnings.**

**British Admiralty Notices to Mariners** (including Amendments to Admiralty List of Lights and Fog Signals; List of Radio Signals; and Sailing Directions)

### **New Zealand Notices to Mariners**

*The substance of these notices should be inserted on the charts affected.*

*Bearings are referred to the true compass and are reckoned clockwise from North; those relating to lights are given as seen by an observer from seaward. Positions quoted in permanent notices relate to the horizontal datum for the chart(s). When preliminary or temporary notices affect multiple charts, positions will be provided in relation to only one horizontal datum and that datum will be specified. When the multiple charts do not have a common horizontal datum, mariners will be required to adjust the position(s) for those charts not on the specified datum. The range quoted for a light is its nominal range. Depths are with reference to the chart datum of each chart. Heights are above mean high water springs or mean higher high water, as appropriate.*

*The capital letter (P) or (T) after the number of any notice denotes a preliminary or temporary notice respectively, which are contained separately at the end of the permanent notices. A star (\*) adjacent to the number of a notice indicates that the notice is based on original information.*

**Mariners are particularly requested to notify the AUSTRALIAN HYDROGRAPHIC SERVICE, Locked Bag 8801 Wollongong, NSW 2500 (Fax 02-4223 6599, e-mail [Hydro.NTM@defence.gov.au](mailto:Hydro.NTM@defence.gov.au) or, alternatively by filling in and submitting the **Hydrographic Notes** forms located on the web site – [www.hydro.gov.au](http://www.hydro.gov.au)), immediately on the discovery of new dangers or suspected dangers to navigation. For changes or defects in aids to navigation notify AusSAR (Fax 02-6230 6868 or email [rccaus@amsa.gov.au](mailto:rccaus@amsa.gov.au)).**

Copies of Australian notices are available free of charge from the Australian Hydrographic Service (AHS) website ([www.hydro.gov.au](http://www.hydro.gov.au)) and through the eNotices (email) service ([www.hydro.gov.au/enotices.htm](http://www.hydro.gov.au/enotices.htm)). Paper copies may be printed by chart agents and distributed to customers on a cost recovery basis. Participating chart agents are listed on the AHS website as providing a 'Paper Notices to Mariners' service ([www.hydro.gov.au/prodserv/distributors/distributors.htm](http://www.hydro.gov.au/prodserv/distributors/distributors.htm)).

Individual Notices may be copied for the purpose of inserting Notice substance on official charts and publications. Copies of the notices may not be sold for profit without prior written agreement.

### **IMPORTANT NOTICE**

This edition of Notices to Mariners includes all significant information affecting AHS products which the AHS has become aware of since the last edition. All reasonable efforts have been made to ensure the accuracy and completeness of the information, including third party information, on which these updates are based. The AHS regards third parties from which it receives information as reliable, however the AHS cannot verify all such information and errors may therefore exist. The AHS does not accept liability for errors in third party information.

This work is copyright. Apart from any use permitted under the Copyright Act 1968, no part may be reproduced by any process, adapted, communicated or commercially exploited without prior written permission from The Commonwealth represented by the Australian Hydrographic Service. Copyright in some of the material in this publication may be owned by another party and permission for the reproduction of that material must be obtained from the owner.

## NUMERICAL INDEX OF NOTICES TO MARINERS

Edition No 1

16 January 2009

Notices	Aus Chart, INT Chart, ENC Cell, AHP
28.....	Aus 41, 43, 54, 73, 122, 195, 257, 645, 755, 756, 757, 758, 759, 5000, 5001
29.....	Revised prices
30.....	Amendment to Australian Notice to Mariners No 2
31.....	Aus 194, 808, AX 0808E
32.....	Aus 809, AX 0809E
33.....	Aus 200
34.....	Aus 809, 810, 811, AX 0809E
35.....	Aus 809
36.....	Aus 209, 809, 810, AX 0809E
37.....	Aus 209
38.....	Aus 363, 810, 811
39.....	Aus 811
40.....	Aus 243, 817
41.....	Aus 242
42.....	Aus 250
43.....	Aus 263, 264
44.....	Aus 502
45.....	Aus 523, 4622, INT 622
46.....	Aus 547, 674, 677
47.....	Aus 396, 547, 674, 677
48.....	Aus 387
49.....	Aus 388, 462, 4622, INT 622
50.....	Aus 376, 839, AX 66003
51.....	Aus 292, 293, 296
52.....	Aus 701
53.....	Aus 309, 722, AX 0309F, 72309, 72722
54.....	Aus 4071, INT 71
55.....	Aus 322, AX 0322F
56.....	Aus 40
57.....	Aus 41
58.....	Aus 59
59.....	Aus 415, 4603, 4708, 4722, AX 0415F, 4603F, 4708F, 4722F, INT 603, 708, 722
60.....	Aus 743
61.....	Aus 328, 329, 744
62.....	Aus 330, 331
63.....	Aus 747
64.....	Aus 112, 334, 754, AX 0334E, 0754E, 63112, 66002
65.....	Aus 112, AX 63112
66.....	Aus 115
67.....	Aus 120
68.....	Aus 136
69.....	Aus 171, 173, 795, 796
70.....	Aus 144, 158
71.....	Aus 153
72.....	Aus 150, 151
73.....	Aus 357A, 487, 802
74.....	Aus 181, 357A, 422, 487, 802
75.....	Aus 181
76(T).....	Aus 198, 199, AU5198X9
77(T).....	Aus 207, 208, AU5XX208
78(T).....	Aus 209, 219, 361, 423, 424, 809, 810, AX 0809E, AU433152
79(T).....	Aus 814
80(T).....	Aus 235, 236
81(T).....	Aus 235
82(T).....	Aus 235, 236
83(T).....	Aus 236
84(T).....	Aus 236

85(T) .....	Aus 236
86(T) .....	Aus 236
87(T) .....	Aus 236, AU5237X8
88(T) .....	Aus 238, AU5237X8
89(T) .....	Aus 238
90(T) .....	Aus 238
91(T) .....	Aus 242, 243, AU5XX242
92(T) .....	Aus 247
93(T) .....	Aus 260, 261, 367, 822, AX 60260, AU423150, 5261P2
94(T) .....	Aus 826, 827, AU320147
95(T) .....	Aus 256, 257, AU5XX257
96(T) .....	Aus 257
97(T) .....	Aus 258
98(T) .....	Aus 521, 644, AU409148
99(T) .....	Aus 26, 29, 309, 315, 316, 319, 320, 722, AX 0309F, 0315F, 0319F, 72026, 72309, 72722, AU313125, 313126, 313127, 313128, 314123, 314124, 413129
100(T) .....	Aus 319, AX 0319F, AU314123
101(T) .....	Aus 319, AX 0319F, AU314123
102(T) .....	Aus 319, 320, 729, AX 0319F, AU314123
103(T) .....	Aus 43
104(T) .....	Aus 54
105(T) .....	Aus 57, 741, 742
106(T) .....	Aus 64, 743, 744, AU422114
107(T) .....	Aus 328, 329, 744, AU422114
108(T) .....	Aus 328, 329, 744, AU422114
109(T) .....	Aus 112, 113, 114, 117, 754, AX 0754E, 63112, 66002, 70117, AU432115, 433115, 5111X4, 5XX113
110(T) .....	Aus 130, 137
111(T) .....	Aus 137
112(T) .....	Aus 767
113(T) .....	Aus 168, AU5167X8
114(T) .....	Aus 143, 157
115(T) .....	Aus 157, AU439144
116(T) .....	Aus 143, 153, 157, AU439144
117(T) .....	Aus 155
118(T) .....	Aus 143, 155, AU438144
119(T) .....	Aus 154
120(T) .....	Aus 154, AU5XX154
121(T) .....	Aus 155
122(T) .....	Aus 143, 155, AU439145
123(T) .....	Aus 150, 151
124(T) .....	Aus 150
125(T) .....	Aus 181, 357A, 422, 487, AU439146
126(T) .....	Aus 182
127(T) .....	Temporary and Preliminary Notices in Force

---

## NUMERICAL INDEX OF CHARTS AFFECTED

### Edition No 1

Aus Chart	Notices	Aus Chart	Notices
Aus 26.....	99(T)	Aus 293 .....	51
Aus 29.....	99(T)	Aus 296 .....	51
Aus 40.....	56	Aus 309 .....	53, 99(T)
Aus 41.....	28, 57	Aus 315 .....	99(T)
Aus 43.....	28, 103(T)	Aus 316 .....	99(T)
Aus 54.....	28, 104(T)	Aus 319 .....	99(T), 100(T), 101(T), 102(T)
Aus 57.....	105(T)	Aus 320 .....	99(T), 102(T)
Aus 59.....	58	Aus 322 .....	55
Aus 64.....	106(T)	Aus 328 .....	61, 107(T), 108(T)
Aus 73.....	28	Aus 329 .....	61, 107(T), 108(T)
Aus 112.....	64, 65, 109(T)	Aus 330 .....	62
Aus 113.....	109(T)	Aus 331 .....	62
Aus 114.....	109(T)	Aus 334 .....	64
Aus 115.....	66	Aus 357A.....	73, 74, 125(T)
Aus 117.....	109(T)	Aus 361 .....	78(T)
Aus 120.....	67	Aus 363 .....	38
Aus 122.....	28	Aus 367 .....	93(T)
Aus 130.....	110(T)	Aus 376 .....	50
Aus 136.....	68	Aus 387 .....	48
Aus 137.....	110(T), 111(P)	Aus 388 .....	49
Aus 143.....	114(T), 116(T), 118(T), 122(T)	Aus 396 .....	47
Aus 144.....	70	Aus 415 .....	59
Aus 150.....	72, 123(T), 124(T)	Aus 422 .....	74, 125(T)
Aus 151.....	72, 123(T)	Aus 423 .....	78(T)
Aus 153.....	71, 116(T)	Aus 424 .....	78(T)
Aus 154.....	119(T), 120(T)	Aus 462 .....	49
Aus 155.....	117(T), 118(T), 121(T), 122(T)	Aus 487 .....	73, 74, 125(T)
Aus 157.....	114(T), 115(T), 116(T)	Aus 502 .....	44
Aus 158.....	70	Aus 521 .....	98(T)
Aus 168.....	113(T)	Aus 523 .....	45
Aus 171.....	69	Aus 547 .....	46, 47
Aus 173.....	69	Aus 644 .....	98(T)
Aus 181.....	74, 75, 125(T)	Aus 645 .....	28
Aus 182.....	126(T)	Aus 674 .....	46, 47
Aus 194.....	31	Aus 677 .....	46, 47
Aus 195.....	28	Aus 747 .....	63
Aus 198.....	76(T)	Aus 754 .....	64, 109(T)
Aus 199.....	76(T)	Aus 755 .....	28
Aus 200.....	33	Aus 756 .....	28
Aus 207.....	77(T)	Aus 757 .....	28
Aus 208.....	77(T)	Aus 758 .....	28
Aus 209.....	36, 37, 78(T)	Aus 759 .....	28
Aus 219.....	78(T)	Aus 767 .....	112(T)
Aus 235.....	80(T), 81(T), 82(T)	Aus 795 .....	69
Aus 236.....	80(T), 82(T), 83(T), 84(T), 85(T), 86(T), 87(T)	Aus 701 .....	52
Aus 238.....	88(T), 89(T), 90(T)	Aus 722 .....	53, 99(T)
Aus 242.....	41, 91(T)	Aus 729 .....	102(T)
Aus 243.....	40, 91(T)	Aus 741 .....	105(T)
Aus 247.....	92(T)	Aus 742 .....	105(T)
Aus 250.....	42	Aus 743 .....	60, 106(T)
Aus 256.....	95(T)	Aus 744 .....	61, 106(T), 107(T), 108(T)
Aus 257.....	28, 95(T), 96(T)	Aus 796 .....	69
Aus 258.....	97(T)	Aus 802 .....	73, 74
Aus 260.....	93(T)	Aus 808 .....	31
Aus 261.....	93(T)	Aus 809 .....	32, 34, 35, 36, 78(T)
Aus 263.....	43	Aus 810 .....	34, 36, 38, 78(T)
Aus 264.....	43	Aus 811 .....	34, 38, 39
Aus 292.....	51	Aus 814 .....	79(T)
		Aus 817 .....	40

Aus Chart	Notices	ENC Cell	Notices
Aus 822.....	93(T)	AU313125.....	99(T)
Aus 826.....	94(T)	AU313126.....	99(T)
Aus 827.....	94(T)	AU313127.....	99(T)
Aus 839.....	50	AU313128.....	99(T)
Aus 4071.....	54	AU314123.....	99(T), 100(T), 101(T), 102(T)
Aus 4603.....	59	AU314124.....	99(T)
Aus 4622.....	45, 49	AU320147.....	94(T)
Aus 4708.....	59	AU409148.....	98(T)
Aus 4722.....	59	AU413129.....	99(T)
Aus 5000.....	28	AU422114.....	106(T), 107(T), 108(T)
Aus 5001.....	28	AU423150.....	93(T)
AX 0309F.....	53, 99(T)	AU432115.....	109(T)
AX 0315F.....	99(T)	AU433115.....	109(T)
AX 0319F.....	99(T), 100(T), 101(T), 102(T)	AU433152.....	78(T)
AX 0322F.....	55	AU438144.....	118(T)
AX 0334E.....	64	AU439144.....	115(T), 116(T)
AX 0415F.....	59	AU439145.....	122(T)
AX 0754E.....	64, 109(T)	AU439146.....	125(T)
AX 0808E.....	31	AU5111X4.....	109(T)
AX 0809E.....	32, 34, 36, 78(T)	AU5167X8.....	113(T)
AX 4603F.....	59	AU5198X9.....	76(T)
AX 4708F.....	59	AU5237X8.....	87(T), 88(T)
AX 4722F.....	59	AU5261P2.....	93(T)
AX 60260.....	93(T)	AU5XX113.....	109(T)
AX 63112.....	64, 65, 109(T)	AU5XX154.....	120(T)
AX 66002.....	64, 109(T)	AU5XX208.....	77(T)
AX 66003.....	50	AU5XX242.....	91(T)
AX 70117.....	109(T)	AU5XX257.....	95(T)
AX 72026.....	99(T)		
AX 72309.....	53, 99(T)		
AX 72722.....	53, 99(T)		
INT Chart	Notices		
INT 71.....	54		
INT 603.....	59		
INT 622.....	45, 49		
INT 708.....	59		
INT 722.....	59		

**28 AUSTRALIA - Product**

Australian Hydrographic Service (AA365487, AA367311, AA369537, AA379372)

**New Chart**

<i>Chart</i>	<i>Published</i>	<i>Title and description of amendments</i>	<i>Scale</i>	<i>Folio</i>	<i>Index Chart</i>	<i>Price</i>
Aus 41	24/10/2008	Australia - North West Coast - Western Australia - Plans in Western Australia (Sheet 1) Plans: Cockatoo Island 16° 05' 36" S - 16° 07' 42" S 123° 35' 39" E - 123° 38' 24" E Koolan Island 16° 07' 36" S - 16° 09' 32" S 123° 43' 21" E - 123° 46' 05" E <i>New metric chart providing improved coverage of the ports of Koolan Island and Cockatoo Island.</i>	1:7 500     1:7 500	3	Aus 5000	\$35.00
Aus 43	7/11/2008	Australia - North West Coast – Indian Ocean - Scott and Seringapatam Reefs 13° 34' 00" S - 14° 16' 00" S 121° 39' 48" E - 122° 07' 00" E <i>New metric chart providing improved coverage of Scott and Seringapatam Reefs.</i>	1:75 000	3	Aus 5000	\$35.00
Aus 73	7/11/2008	Australia - North West Coast – Plans in Western Australia (Sheet 4) Plans: Cape Cuvier 24° 11' 07" S - 24° 13' 48" S 113° 22' 36" E - 113° 26' 27" E Carnarvon 24° 51' 36" S - 24° 54' 57" S 113° 34' 39" E - 123° 46' 05" E <i>New metric chart providing improved coverage of the ports of Cape Cuvier and Carnarvon.</i>	1:10 000    1:12 500	3	Aus 5001	\$35.00
Aus 122	24/10/2008	Australia - South Coast - South Australia - Yatala Channel 32° 08' 12" S - 32° 13' 30" S 133° 31' 50" E - 133° 41' 42" E <i>New metric chart providing improved coverage of Yatala Channel and the port of Thevenard.</i>	1:15 000	5	Aus 5001	\$35.00
Aus 645	5/12/2008	Papua New Guinea - North Coast - Approaches to Port of Basamuk 5° 23' 38" S - 5° 34' 00" S 146° 00' 00" E - 146° 13' 17" E Plan: Port of Basamuk 5° 31' 24" S - 5° 32' 47" S 146° 08' 00" E - 146° 09' 45" E <i>New metric chart providing coverage of the new port of Basamuk.</i>	1:37 500    1:5 000	10	Aus 5000	\$35.00

**New Edition**

<i>Chart</i>	<i>Published</i>	<i>Title and description of amendments</i>	<i>Scale</i>	<i>Folio</i>	<i>Index Chart</i>	<i>Price</i>
Aus 195	21/11/2008	Australia - East Coast - New South Wales - Approaches to Port Kembla <i>A limited new edition to insert amended harbour limit and revoke designated anchorages.</i>	1:25 000	7	Aus 5001	\$35.00
Aus 257	21/11/2008	Australia - East Coast - Queensland - Townsville Harbour and Ross River Entrance <i>New edition to resolve horizontal anomaly and includes latest surveys.</i>	1:7 500	8	Aus 5000	\$35.00

**New Edition to be published shortly**

<i>Chart</i>	<i>Title</i>	<i>Scale</i>	<i>Expected Publication Date</i>	<i>Expected Stock Availability</i>
Aus 755	Australia - West Coast - Western Australia - Cape Peron to Cape Naturaliste	1:150 000	16 January 2009	23 February 2009
Aus 756	Australia - South West Coast - Western Australia - Cape Naturaliste to Cape Leeuwin	1:150 000	16 January 2009	23 February 2009
Aus 757	Australia - South Coast - Western Australia - Cape Leeuwin to Point D'Entrecasteaux	1:150 000	16 January 2009	23 February 2009
Aus 758	Australia - South Coast - Western Australia - Point D'Entrecasteaux to Point Hillier	1:150 000	16 January 2009	23 February 2009
Aus 759	Australia - South Coast - Western Australia - Point Hillier to Bald Island	1:150 000	16 January 2009	23 February 2009
Aus 5000	Australian Index of Nautical Charts - Northern Portion		16 January 2009	23 February 2009
Aus 5001	Australian Index of Nautical Charts - Southern Portion		16 January 2009	23 February 2009

**Chart permanently withdrawn**

<i>Chart</i>	<i>On publication of new chart</i>
Aus 43	Aus 43
Aus 54	Aus 54 (Notice 1214 edition 24/08 refers)

For further details refer to the AHS website at [www.hydro.gov.au](http://www.hydro.gov.au) for new edition and new chart stock arrival information.

When placing orders with a chart agent, mariners should advise whether their order pertains to the current edition or the new edition.

**29 AUSTRALIA - Product - Revised prices**

Australian Hydrographic Service (AA378957)

The following are the new GST Inclusive Retail Prices which come into force from 5 January 2009:

Australian Nautical Charts	\$35.00
Australian Nautical Charts used for Instructional Purposes or sold to Royal Volunteer Coastal Patrol Units or Australian Volunteer Coast Guard Units	\$25.00
Australian Chart Indexes	\$17.50
Mercatorial Plotting Sheets	\$17.50
Australian National Tide Tables	\$64.90
Seafarer Tides	\$59.95

**30 AUSTRALIA - Product - Amendment to Australian Notice to Mariners No 2**

Australian Hydrographic Service (AA378670, AA379783)

Page 11

*Amend* Rampant Marine Electronics details to read:

**Rampant Marine Electronics**

16 Corser Street  
Port Bundaberg 4670

Telephone	+61 (0)7 4159 4399	<b>S</b>
Fax	+61 (0)7 4159 4911	
Email	rampantmarine@queenslander.net	

Page 15

*Amend* The Editor's Office contact details to read:

**The Editor's Office**

PO Box 3195  
Darwin 0801

Telephone	+61 (0)8 8981 0621	<b>S</b>
Fax	+61 (0)8 8981 0228	
Email	fishfindermaps@bigpond.com	
Website	www.fishfinderbooks.com	

**31\* AUSTRALIA - NEW SOUTH WALES - Port Kembla - Port limit; anchorages**

Former Notice - 1245(P)/2008 is cancelled  
Port Kembla Port Corporation (AA372469)

**Aus 194 (plan, Wollongong Harbour) [1218/2008]**

Insert	accompanying block	34° 25'.4 S	150° 54'.5 E
--------	--------------------	-------------	--------------

**Aus 808 [1216/2008]**

Insert	accompanying block	34° 25'.0 S	150° 58'.0 E
--------	--------------------	-------------	--------------

**AX 0808E [1216/2008]**

Insert	accompanying block	34° 25'.0 S	150° 58'.0 E
--------	--------------------	-------------	--------------

**32\* AUSTRALIA - NEW SOUTH WALES - Bondi - Anchoring prohibited eastwards**

UKHO (AA375655)

**Aus 809 [1169/2008]**

Delete	anchoring prohibited area, between	33° 53'.5 S	151° 19'.2 E
		33° 54'.0 S	151° 21'.1 E

**AX 0809E [1169/2008]**

Delete	anchoring prohibited area, between	33° 53'.5 S	151° 19'.2 E
		33° 54'.0 S	151° 21'.1 E

**33\* AUSTRALIA - NEW SOUTH WALES - Port Jackson - ZOC diagram**

Australian Hydrographic Service (AA318722)

**Aus 200 [1265/2008]**

Substitute	accompanying ZOC diagram for reliability diagram	33° 49'.0 S	151° 07'.0 E
------------	--	-------------	--------------

**34\* AUSTRALIA - NEW SOUTH WALES - Port Jackson to Nambucca Heads - Chart note**

Australian Hydrographic Service (AA376430), UKHO (AA375657)

**Aus 809 [32/2009]**

Substitute	accompanying note for C note	33° 01'.5 S	151° 19'.0 E
------------	------------------------------	-------------	--------------

**Aus 810 [1170/2008]**

Substitute	accompanying note for C note	32° 00'.0 S	152° 09'.0 E
------------	------------------------------	-------------	--------------

**Aus 811 [507/2007]**

Substitute	accompanying note for C note	30° 49'.7 S	152° 40'.0 E
------------	------------------------------	-------------	--------------

**AX 0809E [32/2009]**

Substitute	accompanying note for C note	33° 01'.5 S	151° 19'.0 E
------------	------------------------------	-------------	--------------

**35\* AUSTRALIA - NEW SOUTH WALES - Swansea - Legend**

UKHO (AA375655)

**Aus 809 (plan, Lake Macquarie Entrance) [34/2009]**

On certain copies only

Delete	contour value, 5	33° 05'.04 S	151° 38'.30 E
--------	------------------	--------------	---------------

**36\* AUSTRALIA - NEW SOUTH WALES - Port Stephens - Light; marine farm; maritime boundary**  
 Australian Hydrographic Service (AA376429), UKHO (AA375655, AA375656)

**Aus 209** [182/2008]

Substitute accompanying note for MF note 32° 46'.6 S 152° 05'.5 E

**Aus 809** [35/2009]

Insert accompanying block 32° 43'.0 S 152° 10'.0 E  
 accompanying note 33° 02'.5 S 151° 30'.0 E  
 accompanying note 32° 58'.0 S 151° 30'.0 E

**Aus 810** [34/2009]

Insert accompanying block 32° 41'.0 S 152° 11'.0 E  
 accompanying note 31° 57'.5 S 152° 20'.0 E

**AX 0809E** [34/2009]

Insert accompanying block 32° 43'.0 S 152° 10'.0 E  
 accompanying note 33° 02'.5 S 151° 30'.0 E  
 accompanying note 32° 58'.0 S 151° 30'.0 E

**37\* AUSTRALIA - NEW SOUTH WALES - Port Stephens - Boondelbah Island - Height**

UKHO (AA375655)

**Aus 209** [36/2009]

Amend spot height to 46m 32° 42'.35 S 152° 13'.75 E

**38\* AUSTRALIA - NEW SOUTH WALES - Crowdy Head - Light sector**

UKHO (AA375656)

**Aus 363** [1171/2008]

Insert white sector, 227° to S border, at light 31° 50'.6 S 152° 45'.2 E

**Aus 810** [36/2009]

Insert white sector, 227° - 197° (330°), at light 31° 50'.6 S 152° 45'.2 E

**Aus 811** [34/2009]

Insert white sector, 227° - 197° (330°), at light 31° 50'.6 S 152° 45'.2 E

**39\* AUSTRALIA - NEW SOUTH WALES - Perpendicular Point to Lagers Point - Fish aggregation devices**

Fisheries NSW (AA149668, AA149700, AA149701)

**Aus 811** [38/2009]

Insert special conical light buoy, Fl.Y.5s (Oct - Jun), with topmark 31° 39'.60 S 152° 56'.24 E  
 special conical light buoy, Fl.Y.5s (Oct - Jun), with topmark 31° 24'.57 S 153° 04'.73 E  
 special conical light buoy, Fl.Y.5s (Oct - Jun), with topmark 30° 50'.53 S 153° 11'.80 E

**40\* AUSTRALIA - QUEENSLAND - Barolin Rock to Nielson Park - Nav aids**

Environmental Protection Agency QLD (AA361876, AA361873), Maritime Safety Queensland Notice 795/2008 (AA375758)

**Aus 243 [1180/2006]**

Insert	spar buoy, without topmark	24° 53'.203 S	152° 29'.527 E
	spar buoy, without topmark	24° 52'.989 S	152° 29'.665 E
	spar light buoy, Q. Y, without topmark	24° 52'.276 S	152° 29'.285 E
	spar buoy, without topmark	24° 50'.400 S	152° 29'.003 E
	spar light buoy, Q. Y, without topmark	24° 49'.766 S	152° 28'.379 E
	spar buoy, without topmark	24° 49'.271 S	152° 28'.256 E
	spar light buoy, Q. Y, without topmark	24° 48'.305 S	152° 28'.771 E
	spar light buoy, Q. Y, without topmark	24° 47'.939 S	152° 28'.274 E
	spar buoy, without topmark	24° 48'.605 S	152° 27'.886 E
	spar buoy, without topmark	24° 49'.755 S	152° 28'.175 E
Delete	depth, 8 <sub>7</sub> m	24° 50'.35 S	152° 29'.05 E
	depth, 11 <sub>3</sub> m	24° 48'.31 S	152° 28'.77 E
	depth, 1m	24° 49'.76 S	152° 28'.16 E
	depth, 5 <sub>3</sub> m	24° 53'.07 S	152° 29'.57 E
	depth, 4m	24° 52'.15 S	152° 29'.38 E

**Aus 817 [952/2008]**

Insert	spar buoy, without topmark	24° 53'.08 S	152° 29'.69 E
	spar light buoy, Q. Y, without topmark	24° 52'.37 S	152° 29'.31 E
	spar buoy, without topmark	24° 50'.49 S	152° 29'.02 E
	spar light buoy, Q. Y, without topmark	24° 49'.86 S	152° 28'.40 E
	spar light buoy, Q. Y, without topmark	24° 48'.40 S	152° 28'.79 E
	spar light buoy, Q. Y, without topmark	24° 48'.03 S	152° 28'.29 E
Delete	depth, 6 <sub>1</sub> m	24° 48'.0 S	152° 28'.5 E

**41\* AUSTRALIA - QUEENSLAND - Bundaberg - Middle Reach - Light buoys**

Maritime Safety Queensland Notice 805/2008 (AA376563)

**Aus 242 (plan, Port Bundaberg) [431/2006]**

Insert	port lateral cylindrical light buoy, <i>Fl.R.4s</i> , without topmark	24° 45'.464 S	152° 23'.420 E
	starboard lateral conical light buoy, <i>Fl.G.4s</i> , without topmark	24° 45'.387 S	152° 23'.385 E
Delete	depth, 2 <sub>9</sub> m	24° 45'.47 S	152° 23'.42 E

**42\* AUSTRALIA - QUEENSLAND - Hay Point - Maintained depth***Former Notice - 448(T)/2007 is cancelled*

Maritime Safety Queensland (AA376552, AA376553)

**Aus 250 (plan, Hay Point) [1221/2008]**

Amend	legend to 5.3m	21° 17'.36 S	149° 17'.96 E
-------	----------------	--------------	---------------

**43\* AUSTRALIA - QUEENSLAND - Cairns - Trinity Inlet - Wreck**

Former Notice - 403(T)/2008 is cancelled  
 HS White, Cairns Port Authority (AA368675)

**Aus 263 [1055/2007]**

Insert	depth, 5 <sub>9</sub> m, enclosed by danger circle with legend Wk	16° 56'.802 S	145° 47'.302 E
--------	--	---------------	----------------

**Aus 264 [1055/2007]**

Insert	depth, 5 <sub>9</sub> m, enclosed by danger circle with legend Wk	16° 56'.802 S	145° 47'.302 E
--------	--	---------------	----------------

**44\* PAPUA NEW GUINEA - Cape Blackwood to Kerema Bay - Chart note**

Australian Hydrographic Service (AA283838, AA373707)

**Aus 502 [628/2008]**

Substitute	accompanying note for P note	7° 32'.5 S	145° 17'.0 E
------------	------------------------------	------------	--------------

**45\* PAPUA NEW GUINEA - Mount Lunaman - Light discontinued**

National Maritime Safety Authority PNG (AA374396)

**Aus 523 [36/2008]**

Delete	light	6° 44'.0 S	147° 00'.6 E
--------	-------	------------	--------------

**Aus 523 (plan, Approaches to Lae)**

Delete	light	6° 44'.02 S	147° 00'.58 E
--------	-------	-------------	---------------

**Aus 4622 (INT 622) [731/2008]**

Delete	light	6° 44'.0 S	147° 00'.6 E
--------	-------	------------	--------------

**46\* PAPUA NEW GUINEA - Kimbe - Wreck**

B O'Hanlon (AA367380)

**Aus 547 [NC 12/10/2007]**

Insert	depth, 20m, enclosed by danger circle with legend Wk	5° 32'.02 S	150° 09'.19 E
--------	---	-------------	---------------

Delete	depth, 20 <sub>2</sub> m	5° 32'.1 S	150° 09'.0 E
--------	--------------------------	------------	--------------

**Aus 674 [669/2007]**

Insert	depth, 20m, enclosed by danger circle with legend Wk	5° 32'.05 S	150° 09'.55 E
--------	---	-------------	---------------

**Aus 677 (plan, Kimbe) [NC 8/6/2007]**

Insert	depth, 20m, enclosed by danger circle with legend Wk	5° 32'.022 S	150° 09'.185 E
--------	---	--------------	----------------

**47\* PAPUA NEW GUINEA - Kimbe - Tower; light beacons**HMAS *Melville* (AA371877), National Maritime Safety Authority PNG (AA374414), PNG Ports Corporation (AA243920)**Aus 396** [NC 29/2/2008]

Insert	radio tower, with legend <i>TR(81) (R Lts)</i>	5° 33'.26 S	150° 09'.64 E
Delete	tower	5° 33'.2 S	150° 10'.0 E

**Aus 547** [46/2009]

Insert	radio tower, with legend <i>TR(81) (R Lts)</i>	5° 33'.26 S	150° 09'.64 E
Delete	tower	5° 33'.2 S	150° 10'.0 E

**Aus 674** [46/2009]

Amend	elevation to <i>6m</i>	5° 28'.71 S	150° 12'.93 E
-------	------------------------	-------------	---------------

**Aus 677 (plan, Kimbe)** [46/2009]

Insert	radio tower, with legend <i>TR(81) (R Lts)</i>	5° 33'.261 S	150° 09'.635 E
Amend	elevation to <i>6m</i>	5° 32'.81 S	150° 08'.95 E
Delete	tower	5° 33'.26 S	150° 09'.59 E

**48\* PAPUA NEW GUINEA - Pommern Bay - Depths; chart limit; ZOC diagram**

Australian Hydrographic Service (AA376940)

**Aus 387** [332/2008]

Insert	accompanying block	5° 22'.0 S	146° 05'.0 E
Substitute	accompanying ZOC diagram	6° 00'.0 S	146° 05'.0 E

**49\* PAPUA NEW GUINEA - Manam Island - Rock**

Navarea X 001/2009 , UKHO (AA378091, AA378092)

**Aus 388** [1275/2008]

Insert	rock which covers and uncovers enclosed by danger circle, with legend <i>Rep (2008)</i>	4° 07'.7 S	145° 16'.2 E
Delete	depth, 1250m	4° 08'.1 S	145° 15'.3 E

**Aus 462** [692/2008]

Insert	danger circle, with legend <i>Rep (2008)</i>	4° 07'.9 S	145° 15'.9 E
--------	--	------------	--------------

**Aus 4622 (INT 622)** [45/2009]

Insert	danger circle, with legend <i>Rep (2008)</i>	4° 07'.7 S	145° 16'.2 E
--------	--	------------	--------------

**50\* AUSTRALIA - TORRES STRAIT - Harvey Rocks to Logan Rocks - Depths; reef**  
Fugro Survey Pty Ltd (AA375217, AA375223, AA375695, AA378084)

**Aus 376 [1276/2008]**

Insert	underwater rock, enclosed by danger circle	10° 17'.40 S	142° 41'.62 E
	depth, 2 <sub>5</sub> m, and extend contour NW to enclose	10° 08'.74 S	142° 29'.05 E
	depth, 7 <sub>3</sub> m, enclosed by contour	10° 17'.20 S	141° 59'.07 E
Move	reef, centred on	9° 50'.1 S	142° 33'.4 E
	to	9° 50'.40 S	142° 33'.13 E
Substitute	depth, 0 <sub>7</sub> m, for depth 1 <sub>8</sub> m	10° 13'.7 S	142° 05'.2 E
Delete	rock and enclosing danger circle	10° 15'.5 S	142° 28'.3 E
	rock and enclosing danger circle	10° 14'.6 S	142° 28'.5 E
	depth, 4 <sub>2</sub> m	10° 08'.8 S	142° 29'.1 E

**Aus 839 [1224/2008]**

Insert	underwater rock, enclosed by danger circle	10° 17'.40 S	142° 41'.62 E
	depth, 2 <sub>5</sub> m, and extend contour NW to enclose	10° 08'.74 S	142° 29'.05 E
	depth, 3 <sub>7</sub> m, enclosed by contour	10° 02'.86 S	142° 27'.72 E
Substitute	depth, 3 <sub>3</sub> m, for depth, 5m	10° 15'.4 S	142° 28'.0 E
Delete	rock and enclosing danger circle	10° 15'.7 S	142° 28'.5 E
	rock and enclosing danger circle	10° 14'.7 S	142° 28'.4 E
	depth, 4 <sub>1</sub> m	10° 08'.8 S	142° 29'.1 E
	depth, 8 <sub>6</sub> m	10° 02'.7 S	142° 27'.9 E

**AX 66003 [1224/2008]**

Insert	depth, 3 <sub>7</sub> m, enclosed by contour	10° 02'.86 S	142° 27'.72 E
Delete	depth, 8 <sub>6</sub> m	10° 02'.7 S	142° 27'.9 E

**51\* AUSTRALIA - TORRES STRAIT - North West Reef - Wreck**  
RNOTI (AA371479)

**Aus 292 [371/2008]**

Move	wreck	10° 30'.95 S	142° 08'.93 E
	to	10° 30'.92 S	142° 08'.96 E

**Aus 293 [729/2008]**

Move	wreck	10° 31'.03 S	142° 08'.87 E
	to	10° 31'.006 S	142° 08'.899 E

**Aus 296 [1276/2008]**

Move	wreck	10° 31'.0 S	142° 08'.9 E
	to	10° 31'.01 S	142° 08'.90 E

**52\* AUSTRALIA - QUEENSLAND - Weipa - Albatross Bay - Beacons**  
Maritime Safety Queensland (AA375436)

**Aus 701 [1009/2008]**

Delete	beacon	12° 37'.6 S	141° 47'.2 E
	beacon	12° 38'.8 S	141° 47'.3 E

**53\* AUSTRALIA - NORTHERN TERRITORY - Bathurst Island - Apsley Strait - Depth**  
Australian Hydrographic Service (AA376634)

**Aus 309** [1277/2008]

Insert	depth, 7 <sub>9</sub> m, and extend contour S to enclose	11° 52'.78 S	130° 34'.36 E
Delete	depth, 9 <sub>4</sub> m	11° 52'.5 S	130° 34'.3 E

**Aus 722** [957/2008]

Insert	depth, 7 <sub>9</sub> m, and extend contour S to enclose	11° 52'.78 S	130° 34'.36 E
Delete	depth, 9 <sub>4</sub> m	11° 52'.5 S	130° 34'.3 E

**AX 0309F** [1277/2008]

Insert	depth, 7 <sub>9</sub> m, and extend contour S to enclose	11° 52'.78 S	130° 34'.36 E
Delete	depth, 9 <sub>4</sub> m	11° 52'.5 S	130° 34'.3 E

**AX 72309** [1277/2008]

Insert	depth, 7 <sub>9</sub> m, and extend contour S to enclose	11° 52'.78 S	130° 34'.36 E
Delete	depth, 9 <sub>4</sub> m	11° 52'.5 S	130° 34'.3 E

**AX 72722** [957/2008]

Insert	depth, 7 <sub>9</sub> m, and extend contour S to enclose	11° 52'.78 S	130° 34'.36 E
Delete	depth, 9 <sub>4</sub> m	11° 52'.5 S	130° 34'.3 E

**54 INDIAN OCEAN - Arabian Sea - Depth**

BA Notice 50/6783/2008 (AA375499)

**Aus 4071 (INT 71)** [1126/2008]

Substitute	depth, 2661m, for depth 2758m	12° 26'.0 N	61° 19'.0 E
------------	-------------------------------	-------------	-------------

**55\* AUSTRALIA - WESTERN AUSTRALIA - Seringapatam Reef to Scott Reef - Chart limits; ZOC diagram**

Australian Hydrographic Service (AA367311)

**Aus 322** [NE 23/5/2008]

Insert	magenta limits, with legend Aus 43 in NW corner, between	14° 16'.0 S	121° 39'.8 E
		14° 16'.0 S	122° 07'.0 E
		13° 34'.0 S	122° 07'.0 E
		13° 34'.0 S	121° 39'.8 E
		14° 16'.0 S	121° 39'.8 E
Substitute	accompanying ZOC diagram	13° 20'.0 S	121° 20'.0 E
Delete	magenta limits, with legend Aus 43, centred on	14° 00'.0 S	121° 50'.0 E

**AX 0322F** [NC 26/9/2008]

Insert	magenta limits, with legend Aus 43 in NW corner, between	14° 16'.0 S	121° 39'.8 E
		14° 16'.0 S	122° 07'.0 E
		13° 34'.0 S	122° 07'.0 E
		13° 34'.0 S	121° 39'.8 E
		14° 16'.0 S	121° 39'.8 E
Substitute	accompanying ZOC diagram	13° 20'.0 S	121° 20'.0 E
Delete	magenta limits, with legend Aus 43, centred on	14° 00'.0 S	121° 50'.0 E

**56\* AUSTRALIA - WESTERN AUSTRALIA - Yampi Sound - Chart limits**

Australian Hydrographic Service (AA365487)

**Aus 40 [739/2008]**

Insert	magenta limits, with legend <i>Aus 41</i> in SW corner, between	16° 07'.83 S	123° 35'.63 E
		16° 07'.83 S	123° 38'.36 E
Insert	magenta limits, with legend <i>Aus 41</i> in NE corner, between	16° 05'.78 S	123° 38'.36 E
		16° 05'.78 S	123° 35'.63 E
		16° 07'.83 S	123° 35'.63 E
		16° 09'.67 S	123° 43'.31 E
		16° 09'.67 S	123° 46'.06 E
		16° 07'.77 S	123° 46'.06 E
Delete	plan, Koolan Island Wharf plan, Cockatoo Island Jetty magenta limits, with legend See Plan, centred on magenta limits, with legend See Plan, centred on	16° 09'.0 S	123° 44'.5 E
		16° 11'.0 S	123° 32'.0 E
		16° 09'.1 S	123° 44'.8 E
		16° 06'.3 S	123° 36'.7 E

**57\* AUSTRALIA - WESTERN AUSTRALIA - Koolan Island - Pipeline; nav aids**

Australian Hydrographic Service (AA375739), Mount Gibson Iron Ltd (AA375281 - AA375284, AA378197, AA378204)

**Aus 41 (plan, Koolan Island) [NC 24/10/2008]**

Insert	outfall pipeline, between  special barrel light buoy, Q. Y, without topmark special barrel buoy, without topmark light, Q. Y	16° 08'.507 S	123° 44'.626 E
		16° 08'.541 S	123° 44'.588 E
		16° 08'.564 S	123° 44'.574 E
		16° 08'.620 S	123° 44'.616 E
		16° 08'.541 S	123° 44'.588 E

**58\* AUSTRALIA - WESTERN AUSTRALIA - Dampier - King Bay - Light beacon discontinued**

Dampier Port Authority Notice 31/2008 (AA378539)

**Aus 59 (plan, Withnell Bay to King Bay) [1233/2008]**

Delete	light beacon	20° 37'.71 S	116° 44'.88 E
--------	--------------	--------------	---------------

**59\* AUSTRALIA - WESTERN AUSTRALIA - Dampier Archipelago - Platform**

Woodside Energy Pty Ltd (AA376647)

**Aus 415 [1127/2008]**

Insert accompanying block 19° 46'.0 S 116° 25'.0 E

**Aus 4603 (INT 603) [1125/2008]**

Insert lit platform 19° 29'.9 S 116° 35'.9 E

**Aus 4708 (INT 708) [1283/2008]**

Insert lit platform 19° 29'.9 S 116° 35'.9 E

**Aus 4722 (INT 722) [1280/2008]**

Insert accompanying block 19° 37'.0 S 117° 14'.0 E

**AX 0415F [1127/2008]**

Insert accompanying block 19° 46'.0 S 116° 25'.0 E

**AX 4603F [1125/2008]**

Insert lit platform 19° 29'.9 S 116° 35'.9 E

**AX 4708F [1283/2008]**

Insert lit platform 19° 29'.9 S 116° 35'.9 E

**AX 4722F [1280/2008]**

Insert accompanying block 19° 37'.0 S 117° 14'.0 E

**60\* AUSTRALIA - WESTERN AUSTRALIA - Bessieres Island - Depths**

Tenix LADS Corporation (DHDB 1045145)

**Aus 743 [1183/2008]**

Insert accompanying block 21° 36'.0 S 114° 47'.0 E

**61\* AUSTRALIA - WESTERN AUSTRALIA - Muiron Islands - Pilot boarding place**

Woodside Marine (AA369072)

**Aus 328 [1183/2008]**Amend legend to *Enfield/Vincent* 21° 37'.8 S 114° 16'.0 E**Aus 329 [914/2008]**Amend legend to *Enfield/Vincent* 21° 37'.3 S 114° 16'.0 E**Aus 744 [793/2008]**Amend legend to *Enfield/Vincent* 21° 37'.8 S 114° 15'.6 E

**62\* AUSTRALIA - WESTERN AUSTRALIA - Cape Cuvier - Chart limits**

Australian Hydrographic Service (AA367311)

**Aus 330 [434/2007]**

Insert	magenta limits, with legend <i>Aus 73</i> in NW corner, between	24° 13'.88 S	113° 22'.52 E
		24° 13'.88 S	113° 26'.37 E
		24° 11'.20 S	113° 26'.37 E
		24° 11'.20 S	113° 22'.52 E
		24° 13'.88 S	113° 22'.52 E
Delete	plan, Cape Cuvier legend, (see Plan)	22° 25'.0 S	112° 20'.0 E
		24° 11'.8 S	113° 22'.1 E

**Aus 331 [99/2008]**

Insert	magenta limits, with legend <i>Aus 73</i> in NW corner, between	24° 13'.88 S	113° 22'.52 E
		24° 13'.88 S	113° 26'.37 E
		24° 11'.20 S	113° 26'.37 E
		24° 11'.20 S	113° 22'.52 E
		24° 13'.88 S	113° 22'.52 E
Delete	legend, (see Chart Aus 330)	24° 12'.0 S	113° 21'.9 E

**63\* AUSTRALIA - WESTERN AUSTRALIA - Carnarvon - Chart limits**

Australian Hydrographic Service (AA367311)

**Aus 747 [190/2008]**

Insert	magenta limits, with legend <i>Aus 73</i> in NW corner, between	24° 54'.95 S	113° 34'.65 E
		24° 54'.95 S	113° 39'.50 E
		24° 51'.60 S	113° 39'.50 E
		24° 51'.60 S	113° 34'.65 E
		24° 54'.95 S	113° 34'.65 E
Delete	plan, Carnarvon magenta limits, with legend See Plan, centred on	24° 30'.0 S	113° 45'.0 E
		24° 53'.5 S	113° 38'.0 E

**64\* AUSTRALIA - WESTERN AUSTRALIA - Fremantle - Approach Channel - Racon; light buoy**  
Fremantle Ports Notice 15/2008 (AA376740, AA377755, AA377756)

<b>Aus 112</b> [1285/2008]			
Insert	topmark on light buoy	31° 57'.13 S	115° 38'.82 E
Amend	legend to <i>Racon</i> (C)	31° 57'.16 S	115° 38'.63 E
<b>Aus 334</b> [1286/2008]			
Insert	topmark on light buoy	31° 57'.13 S	115° 38'.82 E
Amend	legend to <i>Racon</i> (C)	31° 57'.5 S	115° 37'.2 E
<b>Aus 754</b> [377/2008]			
Insert	topmark on light buoy	31° 57'.13 S	115° 38'.82 E
Amend	legend to <i>Racon</i> (C)	31° 57'.2 S	115° 38'.1 E
<b>AX 0334E</b> [1286/2008]			
Insert	topmark on light buoy	31° 57'.13 S	115° 38'.82 E
Amend	legend to <i>Racon</i> (C)	31° 57'.5 S	115° 37'.2 E
<b>AX 0754E</b> [NC 23/5/2008]			
Insert	topmark on light buoy	31° 57'.13 S	115° 38'.82 E
Amend	legend to <i>Racon</i> (C)	31° 57'.2 S	115° 38'.1 E
<b>AX 63112</b> [1285/2008]			
Insert	topmark on light buoy	31° 57'.13 S	115° 38'.82 E
Amend	legend to <i>Racon</i> (C)	31° 57'.16 S	115° 38'.63 E
<b>AX 66002</b> [699/2008]			
Insert	topmark on light buoy	31° 57'.13 S	115° 38'.82 E
Amend	legend to <i>Racon</i> (C)	31° 57'.2 S	115° 38'.1 E

**65\* AUSTRALIA - WESTERN AUSTRALIA - Swanbourne - Buoys**  
Department for Planning and Infrastructure WA Notice 12/2007, 13/2007 (AA374390, AA376801)

<b>Aus 112</b> [64/2009]			
Insert	special spar buoy, without topmark	31° 56'.55 S	115° 44'.90 E
	special spar buoy, without topmark	31° 56'.55 S	115° 44'.12 E
	special spar buoy, without topmark	31° 56'.55 S	115° 43'.35 E
	special spar buoy, without topmark	31° 57'.33 S	115° 43'.35 E
	special spar buoy, without topmark	31° 58'.12 S	115° 43'.35 E
	special spar buoy, without topmark	31° 58'.90 S	115° 43'.35 E
	special spar buoy, without topmark	31° 58'.90 S	115° 43'.97 E
	special spar buoy, without topmark	31° 58'.90 S	115° 44'.60 E
Delete	buoy	31° 56'.78 S	115° 44'.98 E
	buoy	31° 56'.79 S	115° 44'.45 E
	buoy	31° 56'.88 S	115° 44'.01 E
	buoy	31° 57'.12 S	115° 44'.45 E
	buoy	31° 57'.32 S	115° 43'.80 E
	buoy	31° 57'.87 S	115° 43'.79 E
	buoy	31° 58'.30 S	115° 43'.99 E
	buoy	31° 58'.40 S	115° 44'.42 E
	buoy	31° 58'.74 S	115° 44'.68 E
	depth, 11 <sub>9</sub> m	31° 58'.9 S	115° 43'.3 E

**65\* AUSTRALIA - WESTERN AUSTRALIA - Swanbourne – Buoys (continued)****AX 63112 [64/2009]**

Insert	special spar buoy, without topmark	31° 56'.55 S	115° 44'.90 E
	special spar buoy, without topmark	31° 56'.55 S	115° 44'.12 E
	special spar buoy, without topmark	31° 56'.55 S	115° 43'.35 E
	special spar buoy, without topmark	31° 57'.33 S	115° 43'.35 E
	special spar buoy, without topmark	31° 58'.12 S	115° 43'.35 E
	special spar buoy, without topmark	31° 58'.90 S	115° 43'.35 E
	special spar buoy, without topmark	31° 58'.90 S	115° 43'.97 E
	special spar buoy, without topmark	31° 58'.90 S	115° 44'.60 E
Delete	buoy	31° 56'.78 S	115° 44'.98 E
	buoy	31° 56'.79 S	115° 44'.45 E
	buoy	31° 56'.88 S	115° 44'.01 E
	buoy	31° 57'.12 S	115° 44'.45 E
	buoy	31° 57'.32 S	115° 43'.80 E
	buoy	31° 57'.87 S	115° 43'.79 E
	buoy	31° 58'.30 S	115° 43'.99 E
	buoy	31° 58'.40 S	115° 44'.42 E
	depth, 11 <sub>g</sub> m	31° 58'.9 S	115° 43'.3 E

**66\* AUSTRALIA - WESTERN AUSTRALIA - Bunbury - Depths; spoil ground**

Bunbury Port Authority (AA373901, AA373902)

**Aus 115 [1286/2008]**

Insert	accompanying block	33° 17'.0 S	115° 39'.5 E
--------	--------------------	-------------	--------------

**Aus 115 (plan, Port of Bunbury)**

Insert	accompanying block	33° 17'.3 S	115° 39'.5 E
--------	--------------------	-------------	--------------

Delete	dashed line, between	33° 18'.03 S	115° 39'.57 E
		33° 18'.47 S	115° 39'.57 E
		33° 18'.47 S	115° 39'.96 E
		33° 18'.03 S	115° 39'.96 E

**67\* AUSTRALIA - SOUTH AUSTRALIA - Thevenard - Chart limits**

Australian Hydrographic Service (AA365487)

**Aus 120 [244/2008]**

Insert	magenta limits, with legend <i>Aus 122</i> in SW corner, between	32° 13'.58 S	133° 31'.75 E
		32° 13'.58 S	133° 41'.62 E
		32° 08'.28 S	133° 41'.62 E
		32° 08'.28 S	133° 31'.75 E
		32° 13'.58 S	133° 31'.75 E
Delete	plan, Thevenard Wharf	32° 07'.0 S	133° 13'.0 E
	plan, Yatala Channel	32° 08'.0 S	133° 52'.0 E
	magenta limits, with legend See Plan, centred on	32° 10'.0 S	133° 37'.0 E

**68\* AUSTRALIA - SOUTH AUSTRALIA - Port Pirie - Lights**

Department for Transport, Environment and Infrastructure SA Notice 59/2008 (AA375159)

**Aus 136 (plan, Port Pirie Wharves) [50/2008]**

Amend	light to <i>F.AI.WRG.3s</i>	33° 10'.69 S	138° 00'.71 E
	legend to <i>Dir 194.5°</i>	33° 10'.15 S	138° 00'.87 E
Delete	light	33° 10'.73 S	138° 00'.70 E
	dashed line, between	33° 10'.73 S	138° 00'.70 E
		33° 10'.69 S	138° 00'.71 E

**69\* AUSTRALIA - TASMANIA - D'Entrecasteaux Channel to River Derwent - Depths; nav aids; port limit**

Australian Hydrographic Service (AA231068), UKHO (AA375645, AA375646)

**Aus 171 [1289/2008]**

Insert	magenta dashed line, with legend <i>Hobart Port Limit</i> , between	42° 55'.53 S	147° 21'.72 E
		42° 55'.52 S	147° 24'.68 E

**Aus 173 [NC 1/8/2008]**

Substitute	isolated danger topmark for topmark	43° 16'.5 S	147° 07'.5 E
------------	-------------------------------------	-------------	--------------

**Aus 795 [NC 29/8/2008]**

Insert	contour, between	43° 17'.0 S	147° 16'.1 E
		43° 16'.7 S	147° 16'.1 E
	isolated danger beacon, with topmark contour, between	43° 26'.64 S	147° 08'.81 E
		43° 11'.05 S	147° 15'.30 E
		43° 10'.80 S	147° 15'.07 E
rock which does not cover	43° 26'.93 S	147° 06'.88 E	
Substitute	isolated danger topmark for topmark	43° 16'.5 S	147° 07'.5 E
Amend	drying height to $Q_5m$	43° 12'.7 S	147° 05'.0 E
Delete	depth, 1 <sub>3</sub> m	43° 10'.9 S	147° 15'.3 E
	depth, 7 <sub>5</sub> m	43° 16'.7 S	147° 16'.0 E
	contour, between	43° 17'.0 S	147° 16'.1 E
		43° 16'.5 S	147° 16'.1 E
	contour, between	43° 11'.05 S	147° 15'.30 E
		43° 10'.80 S	147° 15'.07 E

**Aus 796 [NC 29/8/2008]**

Insert	contour, between	43° 17'.0 S	147° 16'.1 E
		43° 16'.7 S	147° 16'.1 E
	contour, between	43° 11'.06 S	147° 15'.30 E
		43° 10'.80 S	147° 15'.10 E
Delete	depth, 1 <sub>3</sub> m	43° 10'.9 S	147° 15'.3 E
	depth, 7 <sub>5</sub> m	43° 16'.7 S	147° 16'.0 E
	contour, between	43° 17'.0 S	147° 16'.1 E
		43° 16'.5 S	147° 16'.1 E
	contour, between	43° 11'.05 S	147° 15'.30 E
		43° 10'.80 S	147° 15'.10 E

**70\* AUSTRALIA - VICTORIA - Port Phillip - Lonsdale Bay to Swan Bay - Buoys**  
Victorian Notice 139/2008 (AA376581)

**Aus 144 [1085/2008]**

Insert	special conical buoy, without topmark	38° 15'.669 S	144° 39'.704 E
	special conical buoy, without topmark	38° 16'.597 S	144° 37'.620 E
	special conical buoy, without topmark	38° 16'.733 S	144° 37'.684 E
	special conical buoy, without topmark	38° 16'.924 S	144° 37'.774 E
Delete	depth, 3 <sub>8</sub> m	38° 16'.73 S	144° 37'.71 E
	depth, 3 <sub>1</sub> m	38° 16'.90 S	144° 37'.76 E

**Aus 158 [1085/2008]**

Insert	special conical buoy, without topmark	38° 15'.669 S	144° 39'.704 E
	special conical buoy, without topmark	38° 16'.597 S	144° 37'.620 E
	special conical buoy, without topmark	38° 16'.733 S	144° 37'.684 E
	special conical buoy, without topmark	38° 16'.924 S	144° 37'.774 E

**71\* AUSTRALIA - VICTORIA - Port Phillip - Geelong - Tidal panel**  
Australian Hydrographic Service (AA376889)

**Aus 153 [NC 1/8/2008]**

Substitute	accompanying tidal panel	38° 05'.9 S	144° 21'.6 E
------------	--------------------------	-------------	--------------

**72\* AUSTRALIA - VICTORIA - Western Port - Flinders Bight - Light buoys**

Victorian Notice 145/2008 (AA378242)

**Aus 150 [971/2008]**

Insert	special conical light buoy, Q(4)Y.12s, with topmark	38° 27'.23 S	145° 04'.44 E
	special conical light buoy, Q(4)Y.12s, with topmark	38° 27'.77 S	145° 03'.51 E
	special conical light buoy, Q(4)Y.12s, with topmark	38° 28'.31 S	145° 02'.56 E

**Aus 151 [1140/2008]**

Insert	special conical light buoy, Q(4)Y.12s, with topmark	38° 27'.226 S	145° 04'.442 E
	special conical light buoy, Q(4)Y.12s, with topmark	38° 27'.768 S	145° 03'.514 E
	special conical light buoy, Q(4)Y.12s, with topmark	38° 28'.309 S	145° 02'.585 E

**73\* AUSTRALIA - VICTORIA - East Moncoeur Island - AIS**

Australian Maritime Safety Authority (AA292096, AA307166, AA307274)

**Aus 357A [1264/2008]**

Insert	magenta circle, with legend AIS, at light	39° 13'.9 S	146° 32'.2 E
--------	---	-------------	--------------

**Aus 487 [1290/2008]**

Insert	magenta circle, with legend AIS, at light	39° 13'.7 S	146° 32'.4 E
--------	---	-------------	--------------

**Aus 802 [1290/2008]**

Insert	magenta circle, with legend AIS, at light	39° 13'.8 S	146° 32'.4 E
--------	---	-------------	--------------

**74\* AUSTRALIA - VICTORIA - Clifty Island - Light**  
 Australian Maritime Safety Authority (AA374495, AA374496)

<b>Aus 181</b> [973/2008]			
Amend	light range to 17M	38° 57'.14 S	146° 42'.26 E
<b>Aus 357A</b> [73/2009]			
Amend	light range to 17M	38° 57'.1 S	146° 42'.3 E
<b>Aus 422</b> [1264/2008]			
Amend	light range to 17M	38° 57'.0 S	146° 42'.0 E
<b>Aus 487</b> [73/2009]			
Amend	light range to 17M	38° 57'.0 S	146° 42'.0 E
<b>Aus 802</b> [73/2009]			
Amend	light range to 17M	38° 57'.1 S	146° 42'.3 E

**75\* AUSTRALIA - VICTORIA - Port Welshpool - Depths, buoys**  
 Gippsland Ports (AA365866, AA365867)

<b>Aus 181</b> [74/2009]			
Insert	accompanying block	38° 43'.5 S	146° 29'.0 E

**76(T)/2009 AUSTRALIA - NEW SOUTH WALES - Botany Bay - Scientific instrument**

*Former Notice* - 1190(T)/2008 is cancelled

*Date* - Until 31 March 2009

Cardno Lawson Treloar (AA380573)

A special light buoy, *Fl(5)Y.20s*, exists in position 34° 00'.06 S 151° 11'.96 E.

**Chart temporarily affected - Aus 198 - Aus 199 - AU5198X9****77(T)/2009 AUSTRALIA - NEW SOUTH WALES - Newcastle - Depth information**

*Former Notice* - 1088(T)/2008 is cancelled

Newcastle Port Corporation (AA379369)

Available depths as at 19 December 2008:

<i>Berth</i>	<i>Metres</i>
Western Basin 3	11.6
Western Basin 4	11.6
* Eastern Basin 1	11.4
Eastern Basin 2 North of Ch 450	11.6
Eastern Basin 2 South of Ch 450	11.3
* Dockyard 2 (Dredge)	3.9
Channel Berth (formerly Dockyard 4)	8.3
Dyke 1	11.8
* Dyke 2	12.2
Dyke 4	16.4
Dyke 5	16.4
* Dyke 6	6.5
* BHP Wharf 6 to Ch 1050	7.9
* Kooragang 2	11.6
* Kooragang 2 North Dolphin	11.0
Kooragang 2 South Dolphin	10.9
* Kooragang 3	13.0
* Kooragang 4	16.5
Kooragang 5	16.5
Kooragang 6	16.5
Kooragang Ship Receiving KSR	8.0
Throsby 1	9.5
Carrington wharf	To be sounded as and when required
Tug berth 4	6.5
Elgo wharf	To be sounded as and when required
<i>Channels</i>	
Entrance Approach	17.4
Entrance Channel (18.0m)	16.8
Entrance Channel (17.4m)	17.1
Entrance Channel (16.8m)	16.5
Entrance Channel (16.2m)	16.1
Entrance Channel to Horseshoe	15.1
* Horseshoe	15.0
* Steelworks Channel to Swinging Basin	15.0
* Swinging Basin	15.0
Swinging Basin to BHP	10.6
* Basin Cutting	12.8
* Basin Area to Eastern & Western Basin Berths	12.4
* Basin Area to 1 Throsby	10.0
Stockton Crossing	3.6
* Indicates revised entry.	

**Chart temporarily affected - Aus 207 - Aus 208 - AU5XX208**

**78(T)/2009 AUSTRALIA - TASMAN SEA - Live firing***Date* - Until 14 February 2009

Department of Defence RAAF (AA380390, AA380394)

Military exercise area R595, bounded by 32° 34'.0 S to 33° 26'.0 S and 152° 07'.0 E to 153° 57'.0 E, will be activated for a live firing from 2 to 13 February 2009.

**Chart temporarily affected - Aus 209 - Aus 219 - Aus 361 - Aus 423 - Aus 424 - Aus 809 - Aus 810 - AX 0809E - AU433152****79(T)/2009 AUSTRALIA - QUEENSLAND - Southport - Harbour works***Former Notice* - 927(T)/2008 is cancelled*Date* - Until 30 June 2009

Maritime Safety Queensland Notice 18(T)/2009 (AA380382)

Harbour works associated with the construction of a new pier facility (27° 57'.95 S 153° 25'.15 E (WGS84 datum)) are in progress.

The work site will be marked by special light buoys, *Fl. Y.2-5s*, in positions:

27° 57'.92 S 153° 25'.15 E

27° 57'.86 S 153° 25'.11 E

27° 57'.93 S 153° 25'.19 E

27° 57'.83 S 153° 25'.14 E

Mariners are advised to navigate with caution in the area.

**Chart temporarily affected - Aus 814****80(T)/2009 AUSTRALIA - QUEENSLAND - Moreton Bay - North East Channel - Light buoy off station**

Maritime Safety Queensland Notice 10(T)/2009 (AA379978)

NE6 light buoy (27° 00'.90 S 153° 20'.43 E (WGS84 datum)) is off station.

**Chart temporarily affected - Aus 235 - Aus 236****81(T)/2009 AUSTRALIA - QUEENSLAND - Moreton Bay - North West Channel - Shoaling**

Maritime Safety Queensland Notice 793(T)/2008 (AA375575)

Shoaling, with least depths of *14.9 m*, exists between light beacons NW6 (26° 53'.56 S 153° 10'.71 E (WGS84 datum)) and NW8 (26° 55'.64 S 153° 12'.14 E).

**Chart temporarily affected - Aus 235****82(T)/2009 AUSTRALIA - QUEENSLAND - Moreton Bay - Spitfire Channel - Shoaling**

Maritime Safety Queensland Notice 794(T)/2008 (AA375576)

Shoaling, with least depths of *13.6 m*, exists within Spitfire Channel (27° 02'.39 S 153° 15'.68 E (WGS84 datum)) extending 20 metres into the channel from the northern toe-line.

**Chart temporarily affected - Aus 235 - Aus 236**

**83(T)/2009 AUSTRALIA - QUEENSLAND - Moreton Bay - Ship to ship transfer**

Date - Until 10 June 2009

Maritime Safety Queensland Notice 1(T)/2009 (AA379317)

Ship to ship transfer of LPG from MV *Summit Terra* to vessels *Gas Shuriken*, *Gas Defiance*, *Boral Gas*, *Pacific Gas* and *Gas Dream* will be conducted at STS1 anchorage.

During transfer operations an exclusion zone (1850 metres radius) exists from position 27° 17'.15 S 153° 16'.56 E.

Brisbane Harbour will promulgate the commencement and completion of the transfer operations on VHF Ch 12.

**Chart temporarily affected - Aus 236****84(T)/2009 AUSTRALIA - QUEENSLAND - Moreton Bay - Rous Channel - Shoaling**

Former Notice - 1090(T)/2008 is cancelled

Maritime Safety Queensland Notice 831(T)/2008 (AA378659)

Shoaling exists within Rous Channel.

No3 light buoy (27° 23'.14 S 153° 25'.78 E) has been repositioned to 27° 23'.05 S 153° 25'.33 E.

No7 light buoy (27° 23'.00 S 153° 24'.87 E) has been repositioned to 27° 22'.85 S 153° 24'.93 E.

No5 light buoy (27° 23'.20 S 153° 25'.37 E) has been withdrawn.

Mariners are advised to navigate with caution in the area.

**Chart temporarily affected - Aus 236****85(T)/2009 AUSTRALIA - QUEENSLAND - Moreton Bay - Russell Island - Harbour works completed**

Former Notice - 531(T)/2007 is cancelled

Maritime Safety Queensland Notice 804/2008 (AA376566)

Cancel this notice on receipt.

**Chart formerly affected - Aus 236****86(T)/2009 AUSTRALIA - QUEENSLAND - Moreton Bay - Waterloo Bay - Dredging operations**

Date - Until 30 April 2009

Maritime Safety Queensland Notice 25(T)/2009 (AA380518)

The dredges *Auckland*, *Westpark* and *Soundcem* are conducting dredging operations in Waterloo Bay (27° 28'.0 S 153° 13'.3 E).

The dredges will monitor VHF Ch 13 and will display appropriate lights and signals.

Silt curtains 200m in length have been established onsite and are marked by flashing yellow lights.

Mariners are advised to navigate with caution in the area.

**Chart temporarily affected - Aus 236****87(T)/2009 AUSTRALIA - QUEENSLAND - Moreton Bay - Wynnum - Shoaling**

Maritime Safety Queensland Notice 4(T)/2009 (AA379642)

Shoaling, with least depth 0.8 m, exists within the entrance channel to Wynnum Creek between the starboard entrance beacon (27° 26'.01 S 153° 10'.68 E) and the seaward end of the southern breakwater (27° 26'.10 S 153° 10'.58 E). Shoaling also exists on the southern side of the channel along the length of the southern breakwater.

Mariners are advised to navigate with caution in the area.

**Chart temporarily affected - Aus 236 - AU5237X8**

**88(T)/2009 AUSTRALIA - QUEENSLAND - Brisbane River - Parker Island Reach - Wreck salvaged***Former Notice - 1297(T)/2008 is cancelled*

Maritime Safety Queensland Notice 804/2008 (AA376566)

Cancel this notice on receipt.

**Chart formerly affected - Aus 238 - AU5237X8****89(T)/2009 AUSTRALIA - QUEENSLAND - Brisbane River - Colmslie - Obstruction removed***Former Notice - 697(T)/2007 is cancelled*

Maritime Safety Queensland Notice 789/2008 (AA375473)

Cancel this notice on receipt.

**Chart formerly affected - Aus 238****90(T)/2009 AUSTRALIA - QUEENSLAND - Brisbane River - Humbug reach - Harbour works completed***Former Notice - 653(T)/2008 is cancelled*

Maritime Safety Queensland Notice 789/2008 (AA375473)

Cancel this notice on receipt.

**Chart formerly affected - Aus 238****91(T)/2009 AUSTRALIA - QUEENSLAND - Bundaberg - Depth information***Former Notice - 271(T)/2006 is cancelled*

Maritime Safety Queensland Notice 6(T)/2009 (AA379774)

Available depths as at 6 January 2009:

	<i>Metres</i>
* Sea Reach	9.4
* Middle Reach	9.4
* Inner Reach	9.4
* Swing Basin	8.0
Oil Berth	9.0
* BST Berth	10.6

The deep draught departure channel from the BST berth to Middle Reach has a depth of 9.4m.

\* Indicates revised entry.

**Chart temporarily affected - Aus 242 - Aus 243 - AU5XX242****92(T)/2009 AUSTRALIA - QUEENSLAND - Port Alma - Sea Reach - Light buoy off station**

Maritime Safety Queensland Notice 843(T)/2008 (AA379321)

No3 light buoy (23° 31' .01 S 150° 56' .62 E) is off station.

**Chart temporarily affected - Aus 247**

**93(T)/2009 AUSTRALIA - QUEENSLAND - Shoalwater Bay - Live firing***Date - Until 15 March 2009*

Maritime Safety Queensland Notice 7(T)/2009 (AA379782)

Live firing activities will be conducted in the Shoalwater Bay training area during the period 27 February to 14 March 2009.

A marine danger area extends to all waters south of the line defined by the following positions (WGS84 datum):

Sabina Point Point 2-3 22° 23'.84 S 150° 18'.02 E

Old Kiever Point 3-5 22° 27'.02 S 150° 34'.98 E

All waters, creeks, beaches and other areas within the declared marine danger area are not available for access.

There will be safe anchorages available at Island Head Creek and West Water Port Clinton.

Mariners are advised to keep clear of this area throughout the above times.

**Chart temporarily affected - Aus 260 - Aus 261 - Aus 367 - Aus 822 – AX 60260 - AU423150 - AU5261P2**

**94(T)/2009 AUSTRALIA - QUEENSLAND - Cape Upstart - Wreck northwards***Former Notice - 461(T)/2008 is cancelled*Maritime Safety Queensland Notice 812(T)/2008 (AA376703), wreck is SV *Challenger*

A wreck exists in position 19° 26'.84 S 147° 46'.33 E (WGS84 datum).

Mariners are advised to navigate with caution in the area.

**Chart temporarily affected - Aus 826 - Aus 827 - AU320147**

**95(T)/2009 AUSTRALIA - QUEENSLAND - Townsville - Depth information***Former Notice - 1098(T)/2008 is cancelled*

Maritime Safety Queensland Notice 20(T)/2009 (AA380513)

Available depths as at 14 January 2009:

	<i>Metres</i>	<i>Remarks</i>
Sea Channel	11.7	
* Platypus Channel	11.5	
Outer Harbour:		
Arrival Channel	7.3	West of a line from dolphin across end of berth pocket to edge of arrival channel
* Departure Channel	11.7	
Inner Harbour:		
* Harbour	12.0	
Berths:		
* No 1	11.8	
* No 2	12.4	
* No 3	12.0	
* No 4	10.5	
No 7	11.0	
* No 8	10.2	Seaward of 10 metre mark
* No 9	11.9	
* No 10	9.6	To seaward dolphin
* No 11	11.6	
CB Marine	1.9	
* Between No 7 and No 8	10.4	Seaward of zero mark at No 7
* Between No 9 and No 10	10.8	Seaward of zero mark at No 10
* Ross River Channel	1.2	
Ross Creek	-	No declared depth

\* Indicates revised entry.

**Chart temporarily affected - Aus 256 - Aus 257 - AU5XX257**

**96(T)/2009 AUSTRALIA - QUEENSLAND - Townsville - Horizontal datum anomaly resolved**

Former Notice - 931(P)/2007 is cancelled  
Australian Hydrographic Service (AA369537)

Cancel this notice on receipt.

**Chart formerly affected - Aus 257**

**97(T)/2009 AUSTRALIA - QUEENSLAND - Gladys Inlet - Light buoy restored**

Former Notice - 211(T)/2008 is cancelled  
Maritime Safety Queensland Notice 835/2008 (AA379340)

Cancel this notice on receipt.

**Chart formerly affected - Aus 258**

**98(T)/2009 PAPUA NEW GUINEA - Oro Bay - Light relit**

Former Notice - 1314(T)/2008 is cancelled  
National Maritime Safety Authority PNG Notice 219/2008 (AA375660)

Cancel this notice on receipt.

**Chart formerly affected - Aus 521 - Aus 644 - AU409148**

**99(T)/2009 AUSTRALIA - NORTHERN TERRITORY - WESTERN AUSTRALIA - Charles Point to Browse Island - Scientific instruments**

Former Notice - 1251(T)/2008 is cancelled  
Date - Until 30 November 2009  
MetOcean Engineers (AA379635)

Scientific instruments exist as follows:

<i>Position (WGS 84 datum)</i>	<i>Remarks</i>	<i>Position (WGS 84 datum)</i>	<i>Remarks</i>
13° 52'.21 S 123° 14'.04 E	lit buoy <i>Fl(5)Y.20s</i>	13° 52'.72 S 123° 14'.16 E	lit buoy <i>Fl(5)Y.20s</i>
13° 52'.49 S 123° 13'.78 E	subsurface	13° 54'.62 S 123° 45'.38 E	subsurface
13° 46'.19 S 123° 54'.30 E	subsurface	13° 46'.20 S 123° 54'.41 E	subsurface
13° 46'.24 S 123° 54'.70 E	subsurface	13° 46'.09 S 123° 54'.31 E	subsurface
13° 45'.81 S 123° 54'.33 E	subsurface	13° 36'.01 S 124° 18'.50 E	subsurface
13° 20'.99 S 124° 51'.18 E	subsurface	13° 08'.59 S 125° 17'.22 E	subsurface
12° 50'.36 S 125° 55'.35 E	subsurface	12° 44'.61 S 126° 42'.30 E	subsurface
12° 41'.92 S 126° 56'.64 E	lit buoy <i>Fl(5)Y.20s</i>	12° 41'.93 S 126° 56'.47 E	5 poly floats
12° 41'.90 S 126° 57'.17 E	lit buoy <i>Fl(5)Y.20s</i>	12° 41'.85 S 126° 57'.02 E	5 poly floats
12° 42'.19 S 126° 57'.02 E	subsurface	12° 37'.70 S 127° 24'.84 E	subsurface
12° 31'.81 S 128° 00'.45 E	subsurface	12° 30'.14 S 128° 47'.07 E	subsurface
12° 29'.44 S 129° 27'.55 E	subsurface	12° 19'.71 S 130° 05'.56 E	subsurface
12° 18'.14 S 130° 22'.49 E	subsurface	12° 17'.69 S 130° 36'.76 E	lit buoy <i>Fl(5)Y.20s</i>
12° 17'.66 S 130° 36'.85 E	5 poly floats	12° 18'.89 S 130° 35'.25 E	subsurface

**Chart temporarily affected - Aus 26 - Aus 29 - Aus 309 - Aus 315 - Aus 316 - Aus 319 - Aus 320 - Aus 722 – AX 0309F – AX 0315F – AX 0319F – AX 72026 – AX 72309 – AX 72722 - AU313125 - AU313126 - AU313127 - AU313128 - AU314123 - AU314124 - AU413129**

**100(T)/2009 AUSTRALIA - WESTERN AUSTRALIA - Browse Island - Scientific instrument northwestwards**

Former Notice - 672(T)/2008 is cancelled  
Date - Until 28 February 2009  
Shell Development (Australia) Pty Ltd (AA378754)

A scientific instrument exists in position 13° 30'.92 S 123° 20'.08 E.

**Chart temporarily affected - Aus 319 – AX 0319F - AU314123**

**101(T)/2009 AUSTRALIA - WESTERN AUSTRALIA - Browse Island - Scientific instruments***Former Notice* - 1252(T)/2008 is cancelled*Date* - Until 31 December 2009

MetOcean Engineers (AA375430), Shell Development (Australia) Pty Ltd (AA378754)

Scientific instruments exist as follows:

<i>Position (WGS84 datum)</i>	<i>Remarks</i>
13° 44'.85 S 123° 22'.57 E	subsurface
13° 44'.39 S 123° 22'.29 E	lit buoy <i>FI(5)Y.20s</i>
13° 44'.07 S 123° 21'.04 E	lit buoy <i>FI(5)Y.20s</i>

**Chart temporarily affected - Aus 319 – AX 0319F - AU314123****102(T)/2009 AUSTRALIA - WESTERN AUSTRALIA - Maret Islands - Scientific instruments***Former Notice* - 1253(T)/2008 is cancelled

MetOcean Engineers (AA375430)

Scientific instruments exist as follows:

<i>Position (WGS84 datum)</i>	<i>Remarks</i>
14° 25'.38 S 124° 58'.48 E	4 white poly floats
14° 25'.37 S 124° 58'.48 E	subsurface
14° 24'.96 S 124° 57'.49 E	subsurface
14° 24'.95 S 124° 57'.47 E	4 white poly floats
14° 23'.57 S 124° 52'.73 E	4 white poly floats
14° 23'.49 S 124° 52'.75 E	subsurface
14° 17'.22 S 124° 32'.60 E	subsurface
14° 17'.22 S 124° 32'.55 E	4 white poly floats
14° 12'.06 S 124° 14'.80 E	subsurface
14° 12'.03 S 124° 12'.74 E	4 white poly floats
14° 11'.85 S 124° 15'.06 E	subsurface
14° 11'.82 S 124° 15'.04 E	4 white poly floats
13° 51'.35 S 123° 12'.91 E	4 white poly floats

**Chart temporarily affected - Aus 319 - Aus 320 - Aus 729 – AX 0319F - AU314123****103(T)/2009 AUSTRALIA - WESTERN AUSTRALIA - Scott Reef - Scientific instruments***Former Notice* - 409(T)/2008 is cancelled*Date* - Until 28 February 2010

MetOcean Engineers (AA375430)

Scientific instruments exist as follows:

<i>Position (WGS84 datum)</i>	<i>Remarks</i>
14° 02'.95 S 121° 52'.89 E	lit buoy, <i>FI.Y.20s</i>
14° 03'.00 S 121° 52'.89 E	5 white poly-floats
14° 11'.66 S 121° 53'.00 E	subsurface

**Chart temporarily affected - Aus 43**

**104(T)/2009 AUSTRALIA - WESTERN AUSTRALIA - Port Hedland - Depth information**

Former Notice - 888(T)/2008 is cancelled

Port Hedland Port Authority Notice 1/2008, 15/2008, 19/2008 (AA308401, AA354436, AA378664)

Available depths as at 20 December 2008:

Berth	Metres
PHPA berth 1	11.5
PHPA berth 2	11.2
PHPA berth 3	12.2
BHP Billiton Nelson Point berth A	18.0
BHP Billiton Nelson Point berth B	17.2
BHP Billiton Finucane Island berth C	17.9
BHP Billiton Finucane Island berth D	18.3
* Anderson Point berth 1	19.1
* Anderson Point berth 2	19.1

\* Indicates revised entry.

**Chart temporarily affected - Aus 54****105(T)/2009 AUSTRALIA - WESTERN AUSTRALIA - Rosemary Island - Scientific instrument recovered**

Former Notice - 412(T)/2008 is cancelled

MetOcean Engineers (AA375430)

Cancel this notice on receipt.

**Chart formerly affected - Aus 57 - Aus 741 - Aus 742****106(T)/2009 AUSTRALIA - WESTERN AUSTRALIA - Thevenard Island to Ashburton Road - Scientific instruments**

Date - Until 31 January 2010

MetOcean Engineers (AA380397)

Scientific instruments exist as follows:

Position	Remarks
21° 22'.08 S 114° 50'.91 E	lit buoy <i>Fl(5)Y.20s</i>
21° 22'.08 S 114° 51'.00 E	5 poly floats
21° 21'.86 S 114° 51'.20 E	5 poly floats
21° 29'.92 S 115° 03'.05 E	5 poly floats
21° 39'.29 S 115° 00'.68 E	5 poly floats

**Chart temporarily affected - Aus 64 - Aus 743 - Aus 744 - AU422114****107(T)/2009 AUSTRALIA - WESTERN AUSTRALIA - Muiron Islands - Oil field development northwestwards**

Date - Until 29 May 2010

BHP Billiton (AA380398, AA380483, AA380434)

Drill rigs *Songa Mercur* and *Diamond Ocean Epoch* are undertaking drilling operations for the Pyrenees oil field.

Subsea production wells will be established as follows:

Ravensworth North	21° 31'.80 S 114° 05'.13 E (WGS84 datum)
Ravensworth South	21° 32'.31 S 114° 05'.09 E
Crosby North	21° 31'.72 S 114° 06'.08 E
Crosby South	21° 32'.69 S 114° 05'.69 E
Stickle	21° 31'.36 S 114° 06'.59 E
Macedon	21° 34'.03 S 114° 10'.30 E
Ravensworth WI	21° 30'.16 S 114° 05'.72 E
Crosby WI	21° 29'.96 S 114° 07'.61 E
Stickle WI	21° 30'.16 S 114° 08'.69 E

Mariners are advised to navigate with caution in the vicinity.

**Chart temporarily affected - Aus 328 - Aus 329 - Aus 744 - AU422114**

**108(T)/2009 AUSTRALIA - WESTERN AUSTRALIA - North West Cape - Scientific instruments northwestwards**  
MetOcean Engineers (AA375430)

Scientific instruments exist as follows:

<i>Position (WGS84 datum)</i>	<i>Remarks</i>
21° 30'.80 S 114° 00'.85 E	special buoy with 5 white poly floats
21° 30'.96 S 114° 01'.13 E	lit buoy <i>FI(5)Y.20s</i>

**Chart temporarily affected - Aus 328 - Aus 329 - Aus 744 - AU422114**

**109(T)/2009 AUSTRALIA - WESTERN AUSTRALIA - Fremantle - Drilling operations completed**

*Former Notice - 947(T)/2008 is cancelled*  
Fremantle Port Authority Notice 15/2008 (AA376740)

Cancel this notice on receipt.

**Chart formerly affected - Aus 112 - Aus 113 - Aus 114 - Aus 117 - Aus 754 – AX 0754E – AX 63112 – AX 66002 – AX 70117 - AU432115 - AU433115 - AU5111X4 - AU5XX113**

**110(T)/2009 AUSTRALIA - SOUTH AUSTRALIA - Port Adelaide - Harbour works**

*Date - Until 31 March 2009*  
Department for Transport, Energy and Infrastructure SA Notice 60/2008 (AA378514)

Works associated with the construction of a new shiplift facility in the vicinity of position 34° 47'.14 S 138° 30'.75 E are in progress.

Lights, *FI.Y.3s*, exist in positions 34° 47'.14 S 138° 30'.77 E and 34° 47'.16 S 138° 30'.76 E.

Mariners are advised to navigate with caution in the area.

**Chart temporarily affected - Aus 130 - Aus 137**

**111(P)/2009 AUSTRALIA - SOUTH AUSTRALIA - Port Adelaide - Light established**

*Date - On or about 24 December 2008*  
Department for Transport, Energy and Infrastructure SA Notice 62/2008 (AA379519)

A directional light (*F.AI.WRG.3s* & *FI.G.3s*) has been established in position 34° 50'.26 S 138° 30'.41 E as follows:

<i>Characteristic</i>	<i>Sector</i>
<i>FI.G.3s</i>	181.6° - 182.8°
<i>F.G</i>	182.8° - 187.0°
<i>AI.GW.3s</i>	187.0° - 188.3°
<i>F</i>	188.3° - 189.6°
<i>AI.RW.3s</i>	189.6° - 190.9°
<i>F.R</i>	190.9° - 195.0°

The No 3 Dock swing basin leading lights (34° 49'.88 S 138° 30'.73 E) have been permanently discontinued.

Note: chart Aus 137 will be updated by NTM block shortly.

**Chart which will be affected - Aus 137**

**112(T)/2009 AUSTRALIA - TASMANIA - Ansons Bay - Beacon destroyed**

Marine and Safety Tasmania M4/2009 (AA379984)

The port lateral beacon (41° 03'.76 S 148° 17'.92 E) has been destroyed.

Mariners are advised to navigate with caution.

**Chart temporarily affected - Aus 767**

**113(T)/2009 AUSTRALIA - TASMANIA - River Tamar - Batman Bridge - Reduced clearance***Date - Until 31 March 2009*

Marine and Safety Tasmania Notice M121/2008 (AA375579)

Vertical clearance is periodically reduced by 3.5m in the navigation channel (41° 13'.01 S 146° 54'.88 E).

Mariners are advised to navigate with caution in the area.

**Chart temporarily affected - Aus 168 - AU5167X8****114(T)/2009 AUSTRALIA - VICTORIA - Port Phillip - Corio Bay - Light beacon restored***Former Notice - 1090(T)/2005 is cancelled*

Victorian Notice 1(T)/2009 (AA379732)

Cancel this notice on receipt.

**Chart formerly affected - Aus 143 - Aus 157****115(T)/2009 AUSTRALIA - VICTORIA - Port Phillip - Clifton Springs - Harbour works***Date - Until 31 March 2009*

Victorian Notice 144(T)/2008 (AA378665)

Works associated with the construction of two groynes in positions 38° 08'.92 S 144° 34'.01 E and 38° 08'.77 S 144° 34'.16 E (WGS84 datum) are in progress.

All hazards to navigation will display the appropriate lights.

Mariners are advised to navigate with caution in the area.

**Chart temporarily affected - Aus 157 - AU439144****116(T)/2009 AUSTRALIA - VICTORIA - Port Phillip - Limeburners Bay - Harbour works completed***Former Notice - 1162(T)/2008 is cancelled*

Victorian Notice 1(T)/2009 (AA379732)

Cancel this notice on receipt.

**Chart formerly affected - Aus 143 - Aus 153 - Aus 157 - AU439144****117(T)/2009 AUSTRALIA - VICTORIA - Port Phillip - Altona - Harbour works completed***Former Notice - 677(T)/2008 is cancelled*

Victorian Notice 1(T)/2009 (AA379732)

Cancel this notice on receipt.

**Chart formerly affected - Aus 155****118(T)/2009 AUSTRALIA - VICTORIA - Port Phillip - Submarine pipeline repair works***Date - Until 31 March 2009*

Victorian Notice 158(T)/2008 (AA379339)

Inspection and repair works to a submarine pipeline in position 37° 56'.23 S 144° 53'.95 E are in progress.

MV *Calypso Star* and *Geo Bay* are onsite and will monitor VHF Ch 12.

An exclusion zone (500 metres radius) exists from the vessels.

**Chart temporarily affected - Aus 143 - Aus 155 - AU438144**

**119(T)/2009 AUSTRALIA - VICTORIA - Port Phillip - Port Melbourne - Swanson Dock - Harbour works completed**

*Former Notice* - 378(T)/2007 is cancelled  
 Victorian Notice 1(T)/2009 (AA379732)

Cancel this notice on receipt.

**Chart formerly affected - Aus 154****120(T)/2009 AUSTRALIA - VICTORIA - Port Phillip - Port Melbourne - River Yarra - Harbour works**

*Date* - Until 30 April 2009  
 Victorian Notice 155(T)/2008 (AA379393)

Works associated with wharf demolition at south wharf 32 (37° 49'.24 S 144° 54'.89 E) are in progress.

The barge *Fitzgerald 1* and MT *Jaffa* and *Signet* are onsite.

Mariners are advised to navigate with caution in the area.

**Chart temporarily affected - Aus 154 - AU5XX154****121(T)/2009 AUSTRALIA - VICTORIA - Port Phillip - Brighton - Harbour works completed**

*Former Notice* - 423(T)/2008 is cancelled  
 Victorian Notice 1(T)/2009 (AA379732)

Cancel this notice on receipt.

**Chart formerly affected - Aus 155****122(T)/2009 AUSTRALIA - VICTORIA - Port Phillip - Mordialloc - Shoaling removed**

*Former Notice* - 1328(T)/2008 is cancelled  
 Victorian Notice 1(T)/2009 (AA379732)

Cancel this notice on receipt.

**Chart formerly affected - Aus 143 - Aus 155 - AU439145****123(T)/2009 AUSTRALIA - VICTORIA - Western Port - Shoreham - Beacon restored**

*Former Notice* - 228(T)/2005 is cancelled  
 Victorian Notice 1(T)/2009 (AA379732)

Cancel this notice on receipt.

**Chart formerly affected - Aus 150 - Aus 151****124(T)/2009 AUSTRALIA - VICTORIA - Western Port - Newhaven - Harbour works completed**

*Former Notice* - 253(T)/2007 is cancelled  
 Victorian Notice 1(T)/2009 (AA379732)

Cancel this notice on receipt.

**Chart formerly affected - Aus 150****125(T)/2009 AUSTRALIA - VICTORIA - Shoal Inlet - Light restored**

*Former Notice* - 948(T)/2008 is cancelled  
 Victorian Notice 1(T)/2009 (AA379732)

Cancel this notice on receipt.

**Chart formerly affected - Aus 181 - Aus 357A - Aus 422 - Aus 487 - AU439146**

**126(T)/2009 AUSTRALIA - VICTORIA - Lakes Entrance - Cunningham Arm - Harbour works completed**

Former Notice - 517(T)/2008 is cancelled  
Victorian Notice 1(T)/2009 (AA379732)

Cancel this notice on receipt.

**Chart formerly affected - Aus 182****127(T)/2009 AUSTRALIA - TEMPORARY AND PRELIMINARY NOTICES**

Former Notice - 1057(T)/2008 is cancelled  
Australian Hydrographic Service (AA365660)

<i>Notice</i>	<i>Charts affected</i>	<i>Locality and Subject</i>
		<b>CORAL SEA</b>
		<i>Capel Bank to Nova Bank</i>
<b>835/2008</b>	Aus 4060-4602	Shoaling
<b>653/2001</b>	Aus 614	<i>Lihou Reef</i>
		Shoals
<b>663/2006</b>	Aus 617-4620-4621	<i>Willis Islets</i>
		Light unlit
		<b>NEW SOUTH WALES</b>
		<i>Batemans Bay</i>
<b>317/2006</b>	Aus 191	Shoaling; buoy
		<i>Beecroft Peninsula</i>
<b>1035/2008</b>	Aus 193-807-808-AX 0808E-60193-70193	Light buoy off station
		<i>Bondi</i>
<b>1292/2008</b>	Aus 197-361-808-809-AX 0808E-0809E-63200	Scientific instruments southeastwards
<b>76/2009</b>	Aus 198-199	<i>Botany Bay</i>
		Scientific instrument
		<i>Broken Bay</i>
<b>483/2007</b>	Aus 361-809	Fish aggregating devices eastwards
<b>610/2007</b>	Aus 204-216-AX 67215	Shoaling; light buoys
		<i>Cape Banks</i>
<b>746/2008</b>	Aus 197-808-AX 0808E	Scientific instruments northeastwards
		<i>Green Cape to Ballina Head</i>
<b>708/2008</b>	Aus 195-197-806-807-808-809-810-811-812-813-AX 0808E-0809E	Scientific instruments
		<i>Manly</i>
<b>802/2008</b>	Aus 197-200-201-AX 63200	Scientific instruments
		<i>Newcastle</i>
<b>199/2008</b>	Aus 207-208	Obstructions
<b>648/2008</b>	Aus 207-208	Harbour works; light beacons
<b>866/2008</b>	Aus 207-208-361-362-809-AX 0809E	Obstructions
<b>77/2009</b>	Aus 207-208	Depth information
		<i>Point Long Nose</i>
<b>1036/2008</b>	Aus 197-198-808-AX 0808E	Offshore works
		<i>Port Jackson</i>
<b>454/2006</b>	Aus 202	Shoaling
<b>47/2007</b>	Aus 200-201-AX 63200	West Channel-Light beacon destroyed; light buoy.
<b>650/2007</b>	Aus 200-203	Homebush Bay-Scientific instruments
		<i>Port Kembla</i>
<b>161/2008</b>	Aus 194	Depth information
<b>864/2008</b>	Aus 195-361-808-AX 0808E	Obstructions
		<b>NORTHERN TERRITORY</b>
		<i>Charles Point to Browse Island</i>
<b>99/2009</b>	Aus 26-29-309-315-316-319-320-722-AX 0309F-0315F-0319F-72026-72309-72722	Scientific instruments

## 127(T)/2009 AUSTRALIA - TEMPORARY AND PRELIMINARY NOTICES (continued)

<b>242/2007</b>	Aus 26-28-AX 72026	<i>Darwin</i>
<b>662/2007</b>	Aus 28	Obstruction; light buoys
<b>408/2008</b>	Aus 24-26-28	Depth information
<b>759/2008</b>	Aus 26-AX 72026	Obstruction; buoys
		Light buoy off station
<b>672/2006</b>	Aus 4720	<i>Groote Eylandt</i>
		Scientific instrument eastwards
<b>505/2008</b>	Aus 316-318-725-726	<i>Joseph Bonaparte Gulf</i>
		Gas field development
<b>882/2006</b>	Aus 20-309-722-AX 70722-72722	<i>Melville Island</i>
		Reef delineation
<b>950/2004</b>	Aus 309-311-315	<i>Troubadour Shoals</i>
		Scientific instruments
<b>QUEENSLAND</b>		
<b>460/2008</b>	Aus 255	<i>Abbot Point</i>
<b>664/2008</b>	Aus 255-826	Light buoy established
<b>754/2008</b>	Aus 255-826	Scientific instruments
<b>1044/2008</b>	Aus 255	Scientific instruments
<b>1152/2008</b>	Aus 255	Harbour works
		Depth information
<b>819/2008</b>	Aus 252-253-268	<i>Airlie Beach</i>
<b>1097/2008</b>	Aus 252-253-268	Light buoys established
		Wreck
<b>1317/2008</b>	Aus 4-701	<i>Albatross Bay</i>
		Scientific instruments
<b>1041/2008</b>	Aus 365	<i>Arkwright Point</i>
<b>1093/2008</b>	Aus 365	Scientific instruments northeastwards
		Scientific instrument
<b>1079/2007</b>	Aus 268	<i>Bowen</i>
		Wreck
<b>1206/2008</b>	Aus 301	<i>Boyd Point</i>
		Drilling operations
<b>1090/2006</b>	Aus 238	<i>Brisbane River</i>
<b>830/2007</b>	Aus 238	Lights altered
<b>1131/2007</b>	Aus 237	Cameron Rocks-Light unlit
<b>1132/2007</b>	Aus 237-238	Fisherman Island-Floating pipeline
<b>57/2008</b>	Aus 237	Lytton Reach-Mooring blocks; pipeline
<b>751/2008</b>	Aus 237	Pelican Banks-Light buoy established
<b>810/2008</b>	Aus 237-238	Fisherman Islands-Harbour works
<b>814/2008</b>	Aus 238	Depth information
<b>1145/2008</b>	Aus 237	Newstead-Harbour works
<b>1146/2008</b>	Aus 238	Fisherman Islands-Moorings
<b>1193/2008</b>	Aus 237	Quarries Reach to Parker Island Reach-Harbour works
		Fisherman Islands-Harbour works
<b>657/2008</b>	Aus 242	<i>Bundaberg</i>
<b>91/2009</b>	Aus 242-243	Burnett River-Sea Reach-Light beacon destroyed
		Depth information
<b>1313/2008</b>	Aus 262-263-264-830-AX 63262	<i>Cairns</i>
		Depth information
<b>373/2007</b>	Aus 371-826-827	<i>Cape Bowling Green</i>
<b>114/2008</b>	Aus 826-827	Light buoy off station
		Scientific instrument
<b>1198/2008</b>	Aus 256-827	<i>Cape Cleveland</i>
		Scientific instrument
<b>94/2009</b>	Aus 826-827	<i>Cape Upstart</i>
		Wreck northwards
<b>755/2008</b>	Aus 371-372-827-828	<i>Cassady</i>
		Light beacon destroyed
<b>878/2006</b>	Aus 270	<i>Cooktown</i>
<b>876/2008</b>	Aus 270	Shoaling
		Depth information
<b>1249/2008</b>	Aus 830	<i>Double Island</i>
		Scientific instruments

## 127(T)/2009 AUSTRALIA - TEMPORARY AND PRELIMINARY NOTICES (continued)

		<i>Gladstone</i>
<b>654/2007</b>	Aus 244-245-246	Depth information
<b>204/2008</b>	Aus 244-245	Light beacon destroyed
<b>974/2008</b>	Aus 244-245	Light beacon destroyed
<b>975/2008</b>	Aus 244-245	Fishermans Landing-Harbour works
<b>1247/2008</b>	Aus 244-245-819	Drilling operations
		<i>Gold Coast Seaway</i>
<b>599/2008</b>	Aus 814	Shoaling
		<i>Goold Island</i>
<b>1099/2008</b>	Aus 828	Wreck
		<i>Great Sandy Strait</i>
<b>248/2008</b>	Aus 241-365-817	Light beacon destroyed
		<i>Hay Point</i>
<b>1027/2007</b>	Aus 249-250	Depth information
<b>550/2008</b>	Aus 249-250	Harbour works
<b>1149/2008</b>	Aus 249-250	Drilling operations
		<i>Hay Point to Bailey Islet</i>
<b>933/2008</b>	Aus 249-250-251-823-824	Scientific instruments
		<i>Heron Island</i>
<b>111/2008</b>	Aus 819	Scientific instruments
		<i>Hook Reef</i>
<b>930/2007</b>	Aus 254-825	Beacon destroyed
		<i>Horn Island</i>
<b>1139/2007</b>	Aus 292-376	Outfall
		<i>Karumba</i>
<b>937/2007</b>	Aus 6	Obstruction; buoy
<b>881/2008</b>	Aus 6	Depth information
<b>1051/2008</b>	Aus 6	Light beacon withdrawn
		<i>Kirra Point</i>
<b>391/2008</b>	Aus 813-814	Offshore works
		<i>Laguna Quays</i>
<b>1052/2006</b>	Aus 252	Reduced depth
		<i>Lisa Jane Shoals</i>
<b>1305/2008</b>	Aus 247-819-820	Scientific instrument
		<i>Lizard Island</i>
<b>118/2008</b>	Aus 832	Scientific instruments
		<i>Low Islets</i>
<b>833/2007</b>	Aus 373-830-831	Sector light trial extended
		<i>Lucinda</i>
<b>463/2008</b>	Aus 259	Light buoy repositioned
		<i>Mackay</i>
<b>1096/2008</b>	Aus 250	Depth information
		<i>Magnetic Island</i>
<b>1082/2007</b>	Aus 256	Light beacon destroyed; light buoy
		<i>Mooloolaba</i>
<b>929/2008</b>	Aus 235	Shoaling
		<i>Moreton Bay</i>
<b>102/2007</b>	Aus 235-236	Light sector partially undefined.
<b>694/2007</b>	Aus 235-236	Brisbane River-Depth information and keel clearances
<b>733/2007</b>	Aus 236	Tangalooma Point-Wreck: buoy
<b>774/2007</b>	Aus 236	Scarborough-Shoaling
<b>1069/2007</b>	Aus 235-236	Skirmish Passage-Wreck; light buoy
<b>308/2008</b>	Aus 236	Woody Point-Harbour works; light buoy
<b>346/2008</b>	Aus 236	Cabbage Tree Head-Shoaling
<b>347/2008</b>	Aus 236-814	Bramble Bay-Bridge construction
<b>546/2008</b>	Aus 236-814	Seawall construction
<b>710/2008</b>	Aus 235-236	Spitfire Channel-Light buoys established
<b>711/2008</b>	Aus 236	Wellington Point-Harbour works
<b>712/2008</b>	Aus 236-237-814	Light beacon destroyed; light buoys established
<b>750/2008</b>	Aus 236	Light beacon damaged
<b>870/2008</b>	Aus 236	Manly-Dredging operations
<b>1089/2008</b>	Aus 235-236-814	Spitfire Channel-Wreck southwards
<b>1091/2008</b>	Aus 236	Redcliffe-Scientific instrument southeastwards
<b>1147/2008</b>	Aus 236	Pine River-Harbour works

## 127(T)/2009 AUSTRALIA - TEMPORARY AND PRELIMINARY NOTICES (continued)

		<i>Moreton Bay (continued)</i>
<b>1191/2008</b>	Aus 236	Lamb Island to Macleay Island-Harbour works
<b>1192/2008</b>	Aus 236	Wynnum-Dredging operations
<b>80/2009</b>	Aus 235-236	North East Channel-Light buoy off station
<b>81/2009</b>	Aus 235	North West Channel-Shoaling
<b>82/2009</b>	Aus 235-236	Spitfire Channel-Shoaling
<b>83/2009</b>	Aus 236	Ship to ship transfer
<b>84/2009</b>	Aus 236	Shoaling
<b>86/2009</b>	Aus 236	Waterloo Bay-Dredging operations
<b>87/2009</b>	Aus 236	Wynnum-Shoaling
		<i>Mourilyan</i>
<b>665/2008</b>	Aus 258	Depth information
		<i>Pioneer Bay</i>
<b>1244/2006</b>	Aus 268	Harbour works; light buoys.
<b>663/2008</b>	Aus 252-253-268	Dredging operations
		<i>Point Danger to Point Lookout</i>
<b>804/2008</b>	Aus 813-814	Scientific instruments
		<i>Port Alma</i>
<b>235/2007</b>	Aus 247	Depth information
<b>1196/2008</b>	Aus 247	Harbour works
<b>92/2009</b>	Aus 247	Light buoy off station
		<i>Port Douglas</i>
<b>117/2008</b>	Aus 270	Depth information
		<i>Port Musgrave</i>
<b>73/2008</b>	Aus 701	Scientific instruments
		<i>Pumicestone Channel</i>
<b>928/2008</b>	Aus 235-236	Light beacon destroyed
<b>1300/2008</b>	Aus 235-236	Wreck
		<i>Shoalwater Bay</i>
<b>93/2009</b>	Aus 260-261-367-822-AX 60260	Live firing
		<i>Skardon River</i>
<b>671/2006</b>	Aus 701	Shoaling
<b>890/2007</b>	Aus 701	Shoaling
		<i>Southport</i>
<b>79/2009</b>	Aus 814	Harbour works
		<i>Swains Reef</i>
<b>311/2008</b>	Aus 367-426	Scientific instruments
		<i>Thread Shoal to Myrmidon Reef</i>
<b>116/2008</b>	Aus 828	Scientific instruments
		<i>Thursday Island</i>
<b>351/2008</b>	Aus 293-299	Depth information
<b>666/2008</b>	Aus 293-299	Light buoy off station
		<i>Townsville</i>
<b>281/2006</b>	Aus 256-257	Wreck
<b>1248/2008</b>	Aus 256-257	Light buoy
<b>95/2009</b>	Aus 256-257	Depth information
		<i>Weipa</i>
<b>936/2007</b>	Aus 4	Light beacon destroyed
<b>670/2008</b>	Aus 4	Light buoy withdrawn
<b>1103/2008</b>	Aus 4	Depth information
		<i>Yorkeys Knob</i>
<b>820/2008</b>	Aus 262	Dredging operations
		<b>SOUTH AUSTRALIA</b>
<b>414/2008</b>	Aus 344-778	Light beacon unlit
		<i>Barker Inlet</i>
<b>830/2008</b>	Aus 130-780-781	Shoaling
		<i>Glengel</i>
<b>490/2002</b>	Aus 125-781	Restricted areas; light buoys
<b>1161/2008</b>	Aus 125	Shoaling
		<i>Holdfast Bay</i>
<b>831/2008</b>	Aus 125-345-780-781	Scientific instruments
		<i>Margaret Brock Reef</i>
<b>452/2002</b>	Aus 127	Structure

## 127(T)/2009 AUSTRALIA - TEMPORARY AND PRELIMINARY NOTICES (continued)

<b>1208/2008</b>	Aus 343-AX 0343E	<i>Neptune Islands</i> Scientific instrument <i>Port Adelaide</i>
<b>720/2008</b>	Aus 137	Shoaling
<b>110/2009</b>	Aus 130-137	Harbour works
<b>111/2009</b>	Aus 137	Light established <i>Port Augusta</i>
<b>265/2008</b>	Aus 344-778	Light beacon destroyed
<b>415/2008</b>	Aus 344-778	Two Hummock Point-Light beacon altered <i>Port Stanvac</i>
<b>721/2008</b>	Aus 125-780-781	Obstruction; submarine pipeline; light buoys <i>Rapid Bay</i>
<b>765/2008</b>	Aus 345-347-780	Harbour works <i>Taylor Island</i>
<b>988/2008</b>	Aus 134-343-345-444-776-AX 0343E-0776E	Light unlit  <i>Thevenard</i>
<b>1170/2006</b>	Aus 120	Light beacon destroyed, temporary light <i>Wallaroo</i>
<b>1172/2006</b>	Aus 777	Depth information
<b>173/2008</b>	Aus 777	Light beacon destroyed <i>Wirrina Cove</i>
<b>268/2008</b>	Aus 125	Shoaling <i>Yankalilla Bay</i>
<b>832/2008</b>	Aus 345-780	Light buoy off station
<b>TASMAN SEA</b>		
<b>78/2009</b>	Aus 209-219-361-423-424-809-810- AX 0809E	Live firing
<b>TASMANIA</b>		
<b>112/2009</b>	Aus 767	<i>Ansons Bay</i> Beacon destroyed
<b>220/2008</b>	Aus 167-168	<i>Bell Bay</i> Light beacon destroyed <i>Burnie</i>
<b>781/2006</b>	Aus 163	Depth information
<b>990/2008</b>	Aus 163-799	Harbour works <i>D'Entrecasteaux Channel to Norfolk Bay</i>
<b>1087/2007</b>	Aus 169-171-173-174	Scientific instruments <i>D'Entrecasteaux Channel</i>
<b>905/2004</b>	Aus 173	Spat collection; light buoys <i>Devonport</i>
<b>780/2006</b>	Aus 164	Depth information <i>Furneaux Group</i>
<b>922/2005</b>	Aus 179-800	Shoaling <i>Georges Bay</i>
<b>131/2008</b>	Aus 169	Shoaling <i>Hobart</i>
<b>1126/2005</b>	Aus 172	Depth information
<b>509/2008</b>	Aus 171-172	Obstructions <i>Launceston</i>
<b>1106/2008</b>	Aus 168	Dredging operations <i>Maatsuyker Island</i>
<b>1211/2008</b>	Aus 794	Scientific instruments southeastwards <i>Macquarie Harbour</i>
<b>890/2008</b>	Aus 177	Lights unlit <i>Maria Island</i>
<b>417/2008</b>	Aus 355-766	Scientific instrument eastwards <i>Marion Narrows</i>
<b>1129/2005</b>	Aus 169-171	Beacon destroyed <i>Norfolk Bay</i>
<b>906/2004</b>	Aus 171	Spat collection; light buoys
<b>562/2008</b>	Aus 171-795	Scientific instrument

## 127(T)/2009 AUSTRALIA - TEMPORARY AND PRELIMINARY NOTICES (continued)

<b>416/2008</b>	Aus 171-173-174	<i>North West Bay</i> Wreck
<b>833/2008</b>	Aus 171-173-174-795	<i>River Derwent</i> Scientific instruments
<b>563/2008</b>	Aus 168	<i>River Tamar</i> Scientific instrument
<b>1055/2008</b>	Aus 167-799	Port Dalrymple-Reclamation works
<b>113/2009</b>	Aus 168	Batman Bridge-Reduced clearance
<b>1321/2008</b>	Aus 173-174-795	<i>Southport</i> Harbour works
<b>891/2008</b>	Aus 175	<i>Spring Bay</i> Depth information
<b>TIMOR SEA</b>		
<b>982/2008</b>	Aus 314-319-4721-4722	<i>Osborn Passage</i> Drilling operations
<b>476/2006</b>	Aus 312	<i>Sahul Banks</i> Scientific instruments
<b>671/2008</b>	Aus 312-4060-4603-4721	Navaid
<b>VICTORIA</b>		
<b>1002/2004</b>	Aus 181-182	<i>Barry Beach</i> Shoaling
<b>1036/2007</b>	Aus 143-144	<i>Barwon River</i> Lights trial
<b>993/2008</b>	Aus 357A-422-423-487	<i>Bass Strait</i> Drilling operations
<b>667/2007</b>	Aus 181	<i>Corner Inlet</i> Light destroyed
<b>1213/2008</b>	Aus 181-357A-802	Shoaling
<b>799/2007</b>	Aus 357A	<i>Lakes Entrance</i> Scientific instrument
<b>458/2007</b>	Aus 357A	<i>Ninety Mile Beach</i> Obstructions
<b>1320/2008</b>	Aus 349	<i>Port Campbell</i> Production wells; pipeline
<b>351/2005</b>	Aus 143-144-158	<i>Port Phillip</i> South Channel-Shoaling
<b>952/2006</b>	Aus 157	Geelong-Depth information; shoal
<b>796/2007</b>	Aus 143-158	South channel-Obstruction
<b>797/2007</b>	Aus 143-158	South Channel-Obstruction
<b>897/2007</b>	Aus 154	Shoaling
<b>996/2007</b>	Aus 143-157	Geelong-Navaid replacement completed
<b>997/2007</b>	Aus 154	Station Pier-Shoaling
<b>1088/2007</b>	Aus 154	Port Melbourne-Depth information
<b>223/2008</b>	Aus 143-154-155	Princes Pier-Harbour works
<b>361/2008</b>	Aus 143-155	Ricketts Point-Beacon destroyed
<b>475/2008</b>	Aus 154-155	Port Melbourne-Dredging operations
<b>510/2008</b>	Aus 143-144-158	Dredging operations
<b>513/2008</b>	Aus 154	River Yarra-Light beacon withdrawn
<b>565/2008</b>	Aus 154	River Yarra-Harbour works; traffic management system
<b>893/2008</b>	Aus 154	River Yarra-Light beacon withdrawn
<b>991/2008</b>	Aus 143-144-154-155-158	Restricted areas
<b>992/2008</b>	Aus 154	Princes Pier-Trial nav aids
<b>1212/2008</b>	Aus 154	Port Melbourne-River Yarra-Light buoys; restricted area
<b>1324/2008</b>	Aus 143-144-158	Entrance Deep-Underwater survey work
<b>115/2009</b>	Aus 157	Clifton Springs-Harbour works
<b>118/2009</b>	Aus 143-155	Submarine pipeline repair works
<b>120/2009</b>	Aus 154	River Yarra-Harbour works
<b>514/2008</b>	Aus 150-151	<i>Western Port</i> Phillip Island-Shoaling northwards

## 127(T)/2009 AUSTRALIA - TEMPORARY AND PRELIMINARY NOTICES (continued)

		<b>WESTERN AUSTRALIA</b>
		<i>Albany</i>
<b>729/2006</b>	Aus 109	Light beacon; light buoy
<b>762/2008</b>	Aus 109	Dredging operations
		<i>Broome</i>
<b>893/2007</b>	Aus 50	Wreck
		<i>Browse Island</i>
<b>100/2009</b>	Aus 319-AX 0319F	Scientific instrument northwestwards
<b>101/2009</b>	Aus 319-AX 0319F	Scientific instruments
		<i>Cape Latouche Treville</i>
<b>886/2008</b>	Aus 324	Scientific instruments
		<i>Dampier</i>
<b>1034/2007</b>	Aus 57-58-59	Depth information
<b>218/2008</b>	Aus 57-58-59	Anchorage
<b>259/2008</b>	Aus 58-59	Light buoy established
<b>260/2008</b>	Aus 57-58-59	Dredging operations; exclusion zone
<b>314/2008</b>	Aus 57-58	Obstructions
<b>1207/2008</b>	Aus 57-58-59	Shoaling; lights established
		<i>Dampier Archipelago</i>
<b>523/2004</b>	Aus 327-415	Scientific instruments northwestwards
		<i>Emu Point</i>
<b>764/2008</b>	Aus 110-118-759	Light
		<i>Esperance</i>
<b>779/2006</b>	Aus 119	Scientific instrument
<b>616/2008</b>	Aus 119	Depth information
<b>1158/2008</b>	Aus 119-762	Scientific instrument to be established
		<i>Fremantle</i>
<b>745/2007</b>	Aus 114	James Point-Scientific instruments
<b>128/2008</b>	Aus 113	Depth information
<b>470/2008</b>	Aus 112-113-AX 63112	Obstruction; submarine pipeline; light buoys
<b>674/2008</b>	Aus 112-113	Dredging operations
		<i>Geographe Bay</i>
<b>1260/2006</b>	Aus 755-756	Scientific instrument.
		<i>Geraldton</i>
<b>174/2007</b>	Aus 81	Harbour works.
<b>760/2008</b>	Aus 81-751	Light buoy withdrawn
<b>946/2008</b>	Aus 81	Depth information
		<i>Glomar Shoal</i>
<b>1255/2008</b>	Aus 327	Scientific instruments northwards
		<i>James Price Point</i>
<b>885/2008</b>	Aus 324	Scientific instrument
		<i>King George Sound</i>
<b>986/2008</b>	Aus 109-110-118	Obstruction westwards
		<i>Maret Islands</i>
<b>102/2009</b>	Aus 319-320-729-AX 0319F	Scientific instruments
		<i>Mary Anne Island</i>
<b>1306/2006</b>	Aus 63-328-743	Light re-established; characteristics altered.
		<i>Muiron Islands</i>
<b>107/2009</b>	Aus 328-329-744	Oil field development northwestwards
		<i>North Rankin</i>
<b>1256/2008</b>	Aus 327	Scientific instrument
		<i>North West Cape</i>
<b>543/2007</b>	Aus 328-329-744	Wells northward
<b>108/2009</b>	Aus 328-329-744	Scientific instruments northwestwards
		<i>North West Cape to Point Maud</i>
<b>1156/2008</b>	Aus 72-329-330-745	Scientific instruments
		<i>Packer Island to North Head</i>
<b>884/2008</b>	Aus 323	Scientific instruments
		<i>Port Hedland</i>
<b>410/2008</b>	Aus 52-53-54-326-739-740	Drilling operations
<b>506/2008</b>	Aus 53-739-740	Obstruction
<b>560/2008</b>	Aus 52-53-326-739-740	Scientific instruments; diving operations
<b>827/2008</b>	Aus 54	Lights established
<b>887/2008</b>	Aus 54	Light beacon destroyed

**127(T)/2009 AUSTRALIA - TEMPORARY AND PRELIMINARY NOTICES** *(continued)*

<b>1254/2008</b>	Aus 52-53-54-739-740	<i>Port Hedland (continued)</i>
<b>104/2009</b>	Aus 54	Scientific instruments
		Depth information
		<i>Rothery Reef</i>
<b>882/2008</b>	Aus 318-319-320-728	Shoal
		<i>Rottnest Island</i>
<b>1157/2008</b>	Aus 334-754-AX 0334E-0754E-66002	Scientific instrument to be established
		<i>Scott Reef</i>
<b>103/2009</b>	Aus 43	Scientific instruments
		<i>Thevenard Island to Ashburton Road</i>
<b>106/2009</b>	Aus 64-743-744	Scientific instruments
		<i>Yampi Sound</i>
<b>1052/2008</b>	Aus 40-732-733	Comber Rock-Buoy off station

**EAST TIMOR**

		<i>Dili</i>
<b>727/2006</b>	Aus 901	Light unlit
		<i>Pulau Jaco</i>
<b>309/2005</b>	Aus 311-312-313-4721	Light unlit

**INDIAN OCEAN**

<b>1135/2006</b>	Aus 4071	Scientific instruments
<b>800/2005</b>	Aus 607	Light beacon
		<i>Sumatera</i>
<b>945/2008</b>	Aus 4070-4071	Scientific instruments westwards

**PACIFIC OCEAN**

<b>941/2008</b>	Aus 399-462-4622	Scientific instruments
-----------------	------------------	------------------------

**PAPUA NEW GUINEA**

		<i>Bougainville Island</i>
<b>609/2008</b>	Aus 399-683-4622	Lights unlit
		<i>Cape Gazelle</i>
<b>557/2008</b>	Aus 545-554	Light unlit
		<i>Kimbe Island</i>
<b>406/2008</b>	Aus 547-4622	Light unlit
		<i>Lae</i>
<b>964/2005</b>	Aus 523-4622	Light unlit
<b>121/2008</b>	Aus 523	Wreck
<b>355/2008</b>	Aus 523	Light buoy established
		<i>Los Negros Island</i>
<b>824/2008</b>	Aus 391-662	Light unlit
		<i>Madang</i>
<b>967/2005</b>	Aus 646	Horizontal datum anomaly
		<i>Nuakata Passage</i>
<b>554/2008</b>	Aus 508-628	Light unlit
		<i>Port Moresby</i>
<b>404/2008</b>	Aus 379-505-4620	Fish aggregation device southwards
		<i>Rantan Island</i>
<b>1102/2008</b>	Aus 399	Light unlit
		<i>Wewak</i>
<b>1250/2008</b>	Aus 651	Light unlit

**MISCELLANEOUS**

<b>994/2008</b>		Summer time
<b>1142/2008</b>		ANTT 2009

II

HYDROGRAPHIC REPORTS

<i>Locality</i>	<i>Report</i>	<i>Ship/Authority</i>	<i>Observer</i>
QLD- Godds Island Wistari Reef	Wreck Shoal	ACV <i>Corio Bay</i>	R Priest K. Jensen
TAS- Macquarie Harbour	Beacon		B Jones
PNG- Manam Island	Rock	MV <i>Yue Dian 1</i>	L Zhi

**NAVIGATION WARNINGS**

The following radio messages have been received during the period to 16 January 2009. Signal copies of these messages may be destroyed. It is recommended that the reprint of Navigational Warnings should be kept in a file or a book divided into areas. Cancellation should be made on receipt of signals and reprints.

Rigs on location other than those listed in the latest Section III summary are the subject of Radio Navigational Warnings. Rigs in transit will not be the subject of Warnings.

**AUSCOAST WARNING****2008**

- 384 Cancelled.
- 385 Cancelled.
- 386 Cancelled.
- 387 Cancelled.
- 388 Cancelled.
- 389 Drill rig *Ocean Bounty* in position 19° 45'·25 S 115° 53'·19 E. 2·5M clearance requested.
- 390 Special purpose vessel *Geco Searcher* conducting seismic survey towing 5M cable in area 20° 47'·00 S to 20° 51'·00 S and 113° 10'·00 E to 113° 27'·00 E. 5M clearance requested.
- 391 Cancelled.
- 392 Cancelled.
- 393 Cancelled.
- 394 Drill rig *Ensco 106* in position 20° 31'·61 S 114° 58'·02 E. 2·5M clearance requested.
- 395 Cancelled.
- 396 Cancelled.
- 397 Drill rig *Ocean Patriot* in position 38° 43'·15 S 148° 30'·68 E. 2·5M clearance requested.
- 398 Cancelled.
- 399 Cancelled.
- 400 Cancelled.
- 401 Special purpose vessel *Geco Triton* conducting seismic survey towing 4M cable in area 18° 20'·00 S to 19° 22'·00 S and 112° 50'·00 E to 114° 37'·00 E. 6M clearance requested.

**2009**

- 002 Cancelled.
- 003 Cancelled.
- 004 Cancelled.
- 005 Cancelled.
- 006 Cancelled.
- 007 Special purpose vessel *Geo Atlantic* conducting seismic survey towing ten 3·6M cable in area 20° 00'·00 S to 20° 55'·00 S and 114° 42'·00 E to 115° 53'·00 E. 5M clearance requested.
- 008 Cancelled.
- 009 Drill rig *Ocean Epoch* in position 13° 40'·48 S 123° 20'·63 E. 2·5M clearance requested.
- 010 Cancelled.
- 011 Cancelled.
- 012 Cancelled.
- 013 Cancelled.
- 014 Drill rig *West Atlas* in position 12° 40'·30 S 124° 32'·40 E. 2·5M clearance requested.

**NAVAREA X WARNINGS****2008**

- 020 Cancelled.

**2009**

- 001 Uncharted rock reported in position 4° 07'·7 S 145° 16'·2 E.
- 002 Cancelled.

**Navigational warnings in force as at 160001UTC JAN 09.****Auscoast**

- 2008** 340 353 356 368 370 371 374 382 389 390 394 397 401
- 2009** 007 009 014

**Navarea X**

- 2009** 001

**Summary of mobile drilling rigs as at 160001UTC JAN 09.**

<i>Name</i>	<i>Position</i>
Wilcraft	12° 17'.60 S 124° 20'.30 E
West Atlas	12° 40'.30 S 124° 32'.40 E
Ocean Epoch	13° 40'.48 S 123° 20'.63 E
Stena Clyde	13° 08'.24 S 123° 08'.24 E
Sedco 703	13° 59'.20 S 121° 58'.33 E
Songa Mercur	19° 14'.80 S 116° 47'.80 E
Atwood Eagle	19° 54'.48 S 115° 07'.55 E
Ensco 106	20° 31'.61 S 114° 58'.02 E
Nan Hai 6	21° 26'.02 S 114° 01'.60 E
West Triton	38° 11'.80 S 141° 03'.20 E
Ocean Patriot	38° 43'.15 S 148° 30'.68 E

**NAVAREA XIV WARNINGS****2008**

086 Cancelled.  
 087 Cancelled.  
 088 Cancelled.  
 089 Cancelled.  
 090 South Pacific Ocean. Fiji, Viti Levu. Naikorokoro light K4710 (17° 39'.2 S 177° 22'.6 E) unlit.

**Navarea XIV warnings in force as at 160001UTC JAN 09.**

**2008** 085 090

*To accompany Australian Notice to Mariners 34/2009*

TIDAL STREAMS AND CURRENTS

For information on tidal streams and currents  
see Australia Pilot Vol III NP 15.

*Note for chart Aus 809*

*To accompany Australian Notice to Mariners 34/2009*

TIDAL STREAMS AND CURRENTS

For information on tidal streams and currents  
see Australia Pilot Vol III NP 15.

*Note for chart Aus 810*

*To accompany Australian Notice to Mariners 34/2009*

TIDAL STREAMS AND CURRENTS

For information on tidal streams and currents  
see Australia Pilot Vol III NP 15.

*Note for chart Aus 811*

*To accompany Australian Notice to Mariners 34/2009*

TIDAL STREAMS AND CURRENTS

For information on tidal streams and currents  
see Australia Pilot Vol III NP 15.

*Note for chart AX 0809E*

*To accompany Australian Notice to Mariners 36/2009*

MARINE FARMS

Marine farms, which may be floating or fixed structures and their associated moorings should be avoided. The farms are generally marked by buoys or beacons, which may be lit. Their charted positions are approximate.

*Note for chart Aus 209*

*To accompany Australian Notice to Mariners 36/2009*

MARINE FARMS

Marine farms, which may be floating or fixed structures and their associated moorings should be avoided. The farms are generally marked by buoys or beacons, which may be lit. Their charted positions are approximate.

*Note for chart Aus 809*

*To accompany Australian Notice to Mariners 36/2009*

AUSTRALIAN MARITIME JURISDICTION  
(AMJ)

The territorial sea baseline and the outer limit of Australian maritime zones shown on this chart are sourced from the Geoscience Australia product Australian Maritime Boundaries (AMB). For Australian maritime boundary information see Australian Seafarers Handbook AHP 20.

*Note for chart Aus 809*

*To accompany Australian Notice to Mariners 36/2009*

MARINE FARMS

Marine farms, which may be floating or fixed structures and their associated moorings should be avoided. The farms are generally marked by buoys or beacons, which may be lit. Their charted positions are approximate.

*Note for chart Aus 810*

*To accompany Australian Notice to Mariners 36/2009*

MARINE FARMS

Marine farms, which may be floating or fixed structures and their associated moorings should be avoided. The farms are generally marked by buoys or beacons, which may be lit. Their charted positions are approximate.

*Note for chart AX 0809E*

*To accompany Australian Notice to Mariners 36/2009*

AUSTRALIAN MARITIME JURISDICTION  
(AMJ)

The territorial sea baseline and the outer limit of Australian maritime zones shown on this chart are sourced from the Geoscience Australia product Australian Maritime Boundaries (AMB). For Australian maritime boundary information see Australian Seafarers Handbook AHP 20.

*Note for chart AX 0809E*

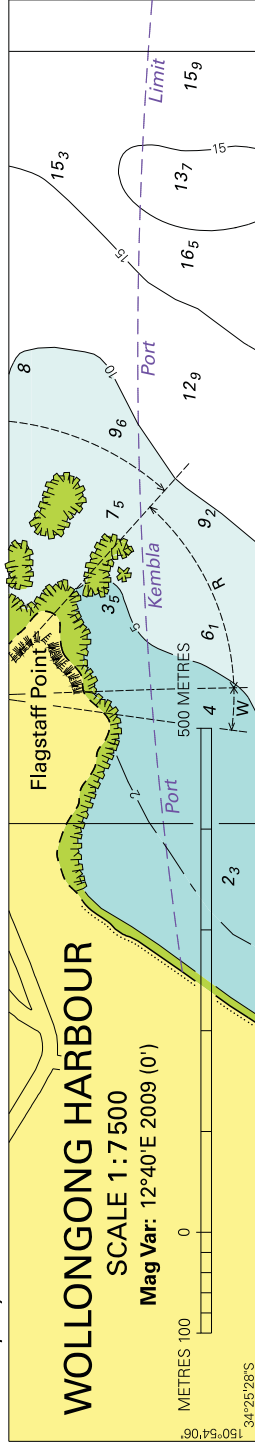
*To accompany Australian Notice to Mariners 44/2009*

OIL AND GAS PIPELINES

Pipelines carry flammable oil or gas at high pressure. A damaged pipeline could cause an explosion, resulting in damage to a vessel or the environment. Pipelines may pass over bottom undulations, be buried or protrude above the seabed reducing charted depths. Vessels should avoid anchoring, trawling or conducting other underwater operations in the vicinity of the pipelines.

*Note for chart Aus 502*

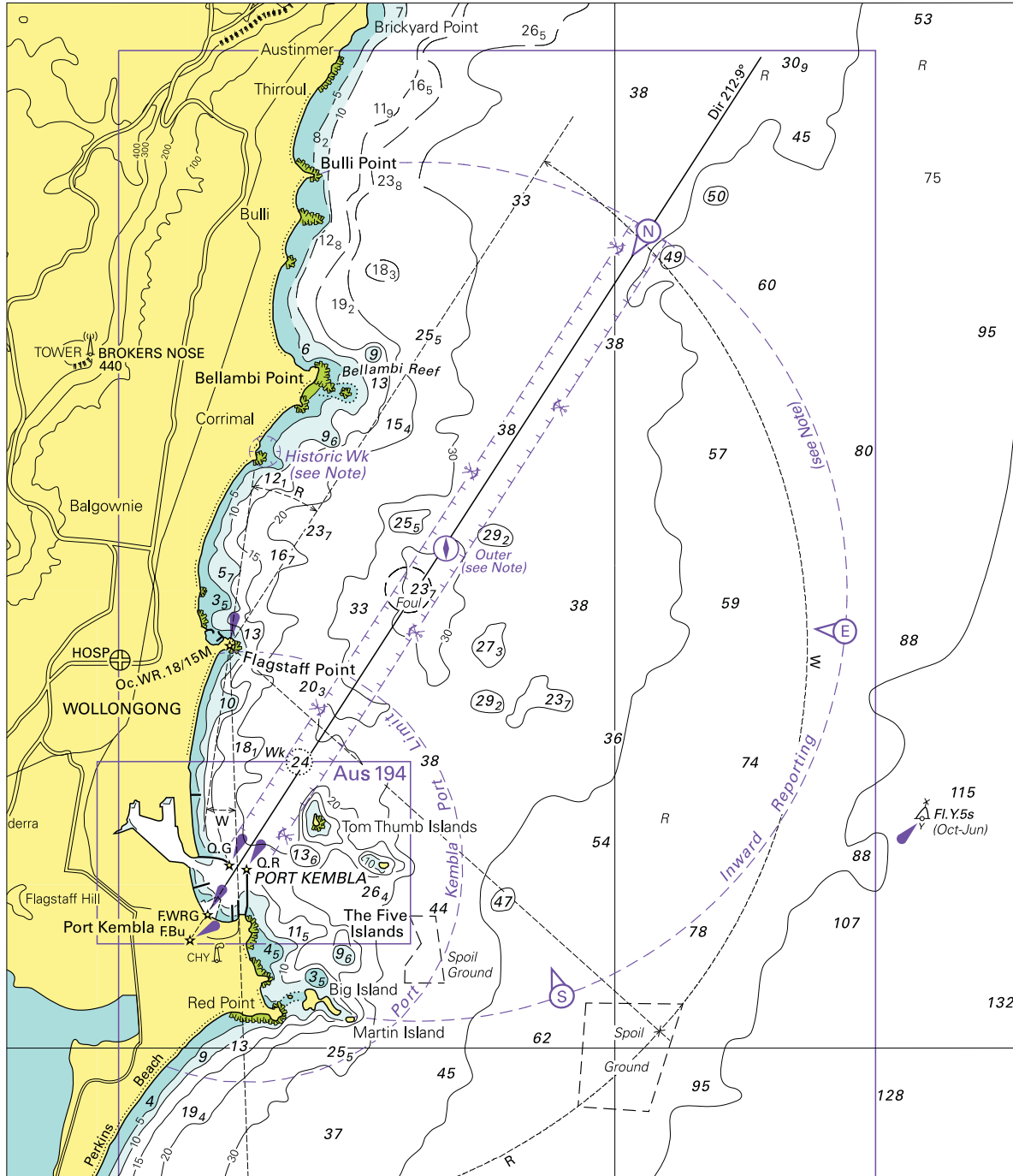
To accompany Australian Notice to Mariners 31/2009



Block for chart Aus194

© Commonwealth of Australia 2009

To accompany Australian Notice to Mariners 31/2009

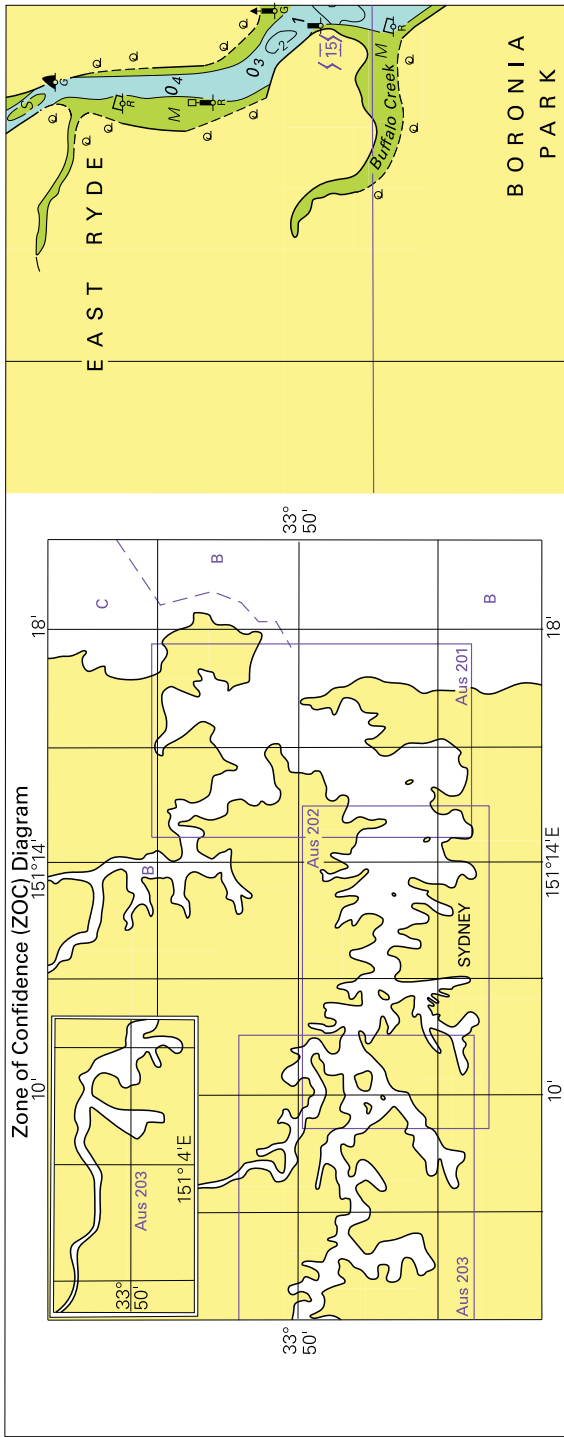


Block for chart Aus 808

© Commonwealth of Australia 2009

(156.0x181.8mm)

To accompany Australian Notice to Mariners 33/2009



**ZOC CATEGORIES**

(For details see Australian Seafarers Handbook, AHP 20)

ZOC	POSITION ACCURACY	DEPTH ACCURACY	SEAFLOOR COVERAGE
A1	±5m	=0.50m + 1% <i>d</i>	All significant seafloor features detected
A2	±20m	=1.00m + 2% <i>d</i>	All significant seafloor features detected
B	±50m	=1.00m + 2% <i>d</i>	Uncharted features hazardous to surface navigation are not expected but may exist
C	±500m	=2.00m + 5% <i>d</i>	Depth anomalies may be expected
D	Worse than ZOC C	Worse than ZOC C	Large depth anomalies may be expected
U	Unassessed	The quality of the bathymetric data has yet to be assessed	

© Commonwealth of Australia 2009

(189.3 x 147.3mm)

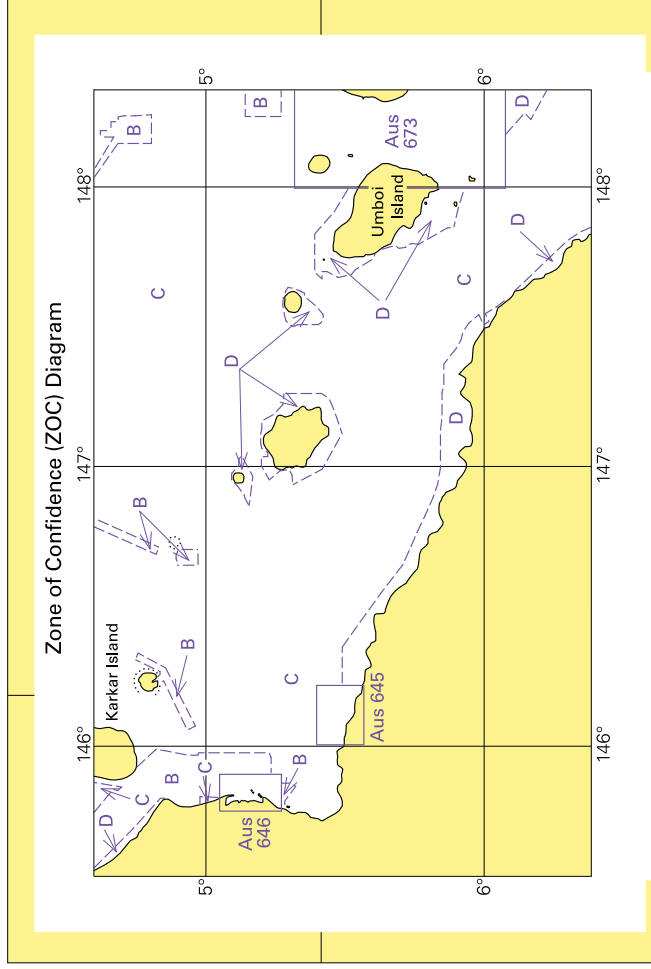
Block for chart Aus 200







To accompany Australian Notice to Mariners 48/2009

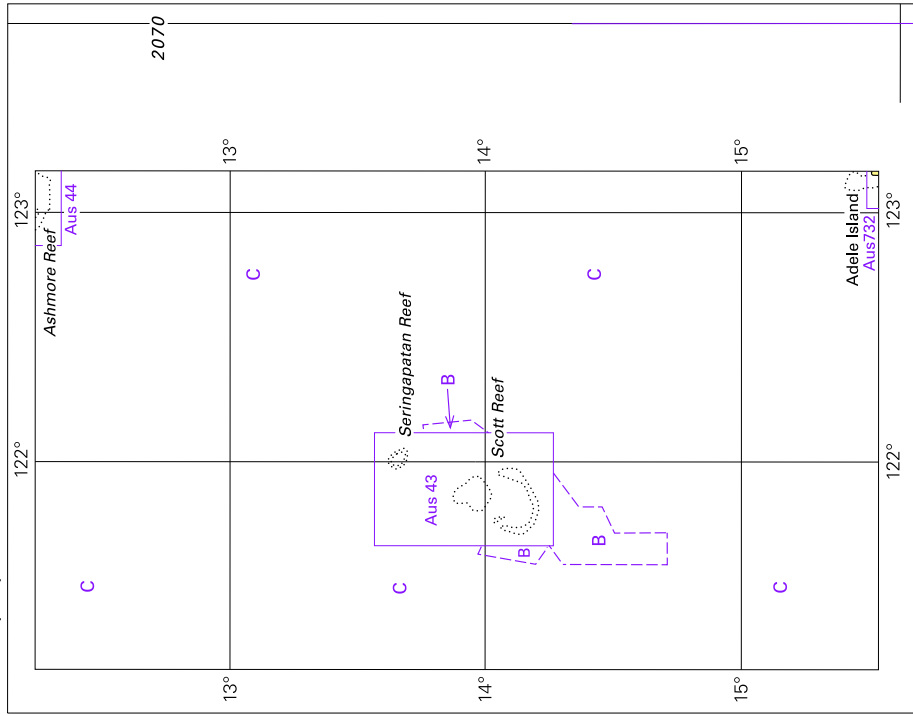


Block for chart Aus 387

© Commonwealth of Australia 2009

(127.5 x 85.8 mm)

To accompany Australian Notice to Mariners 55/2009

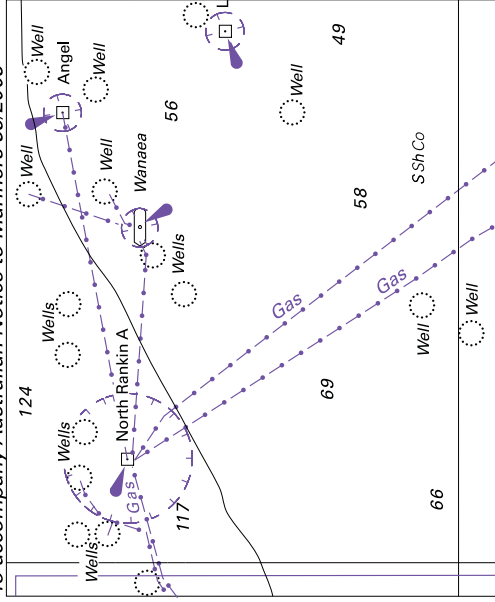


© Commonwealth of Australia 2009

Block for chart Aus 322

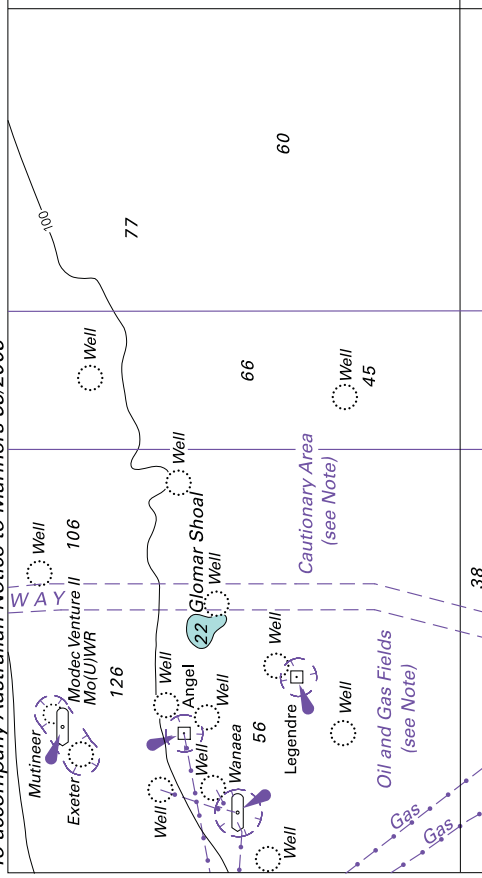
(93.8mm x 120.4mm)

To accompany Australian Notice to Mariners 59/2009



© Commonwealth of Australia 2009  
(78.9 x 65.5mm)  
Block for chart Aus 415

To accompany Australian Notice to Mariners 59/2009

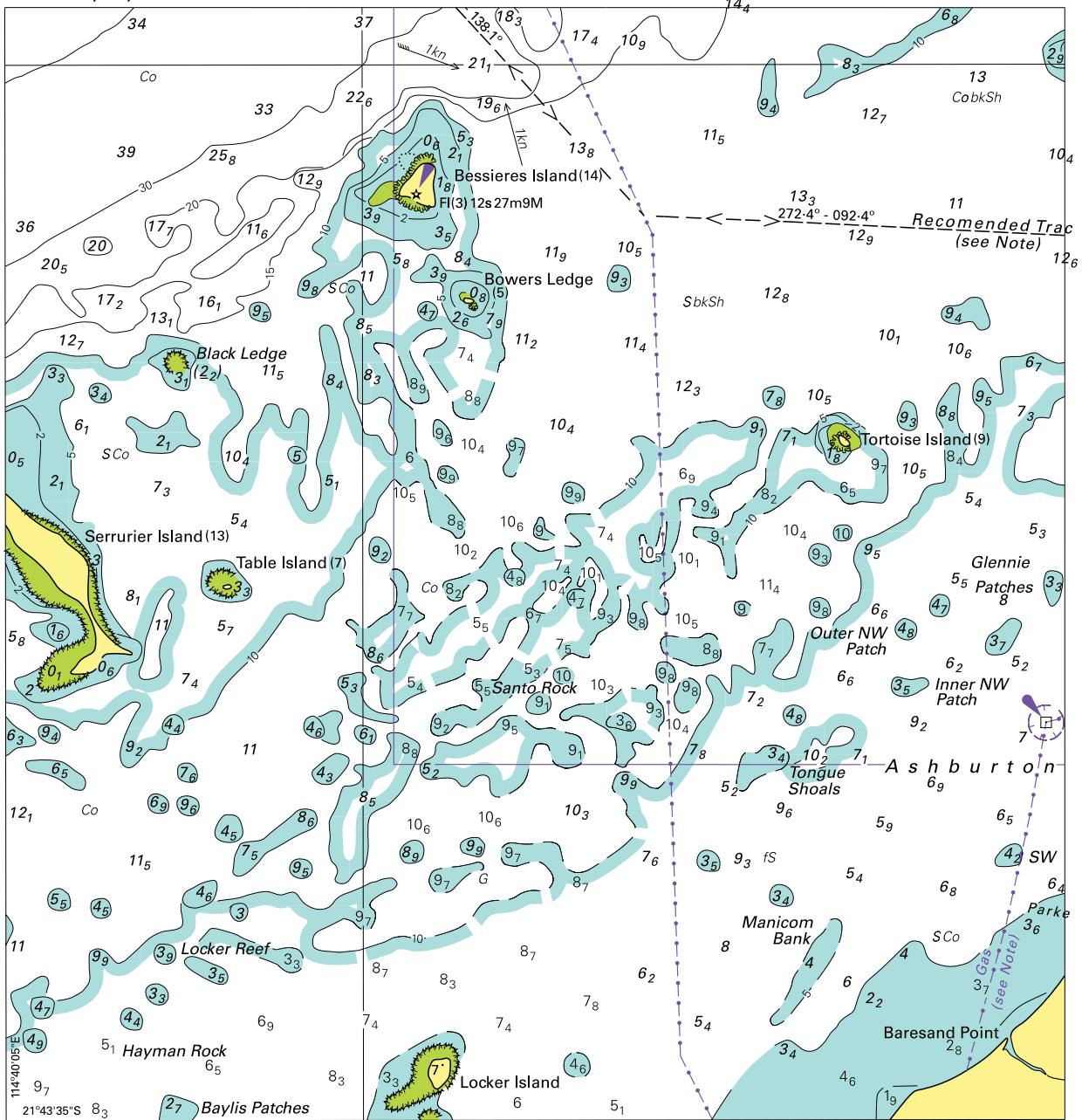


Block for chart Aus 4722

© Commonwealth of Australia 2009

(115.6 x 63.5mm)

To accompany Australian Notice to Mariners 60/2009

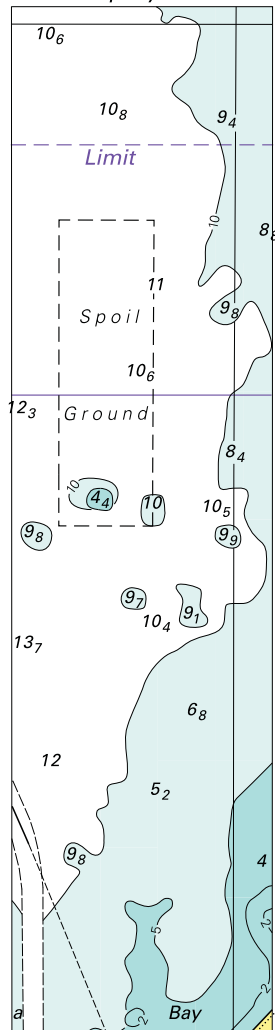


Block for chart Aus 743

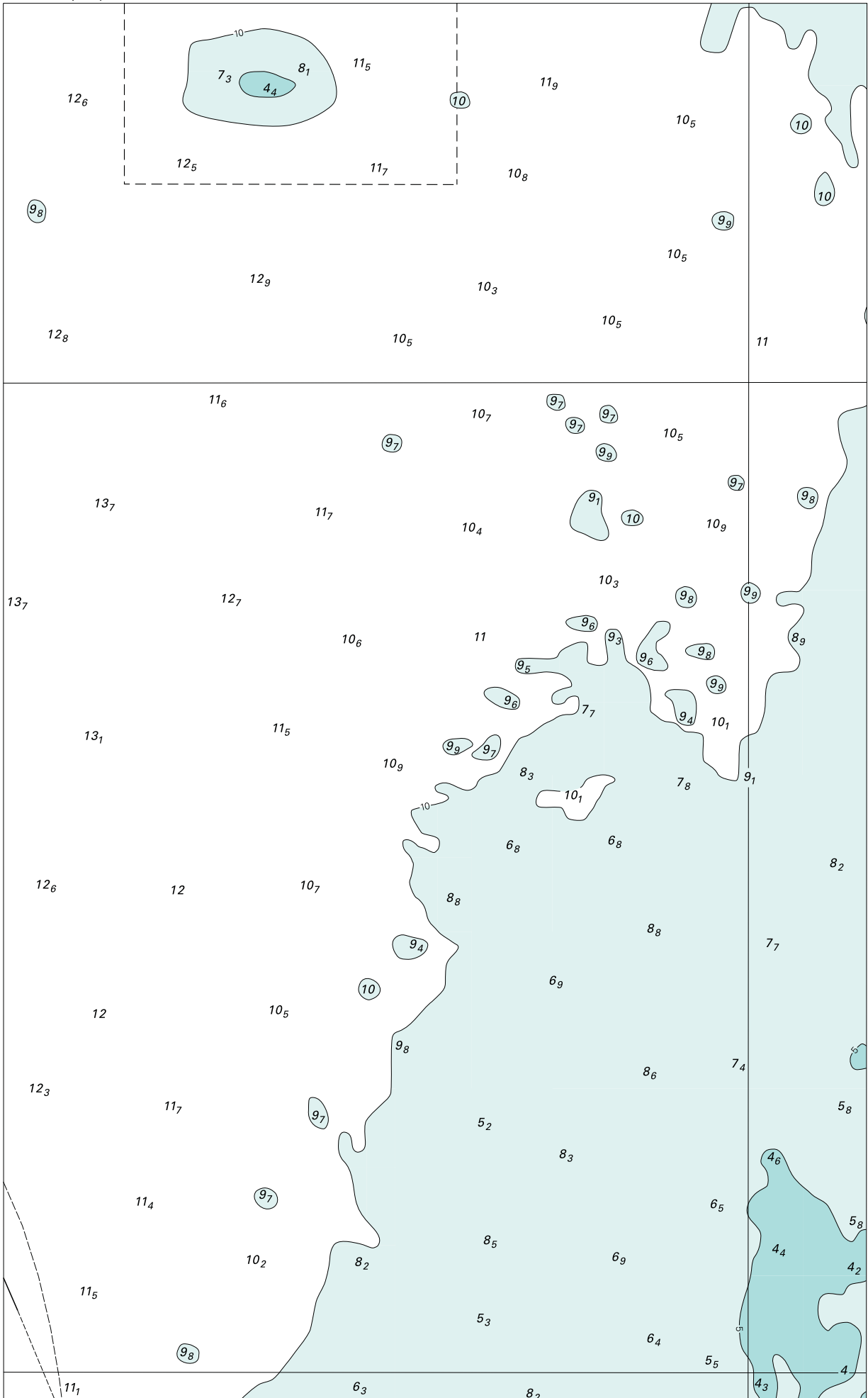
© Commonwealth of Australia 2009

(160.4 x 168.5mm)

To accompany Australian Notice to Mariners 66/2009



© Commonwealth of Australia 2009  
**Block for chart Aus 115**  
(34.5 x 135.6mm)



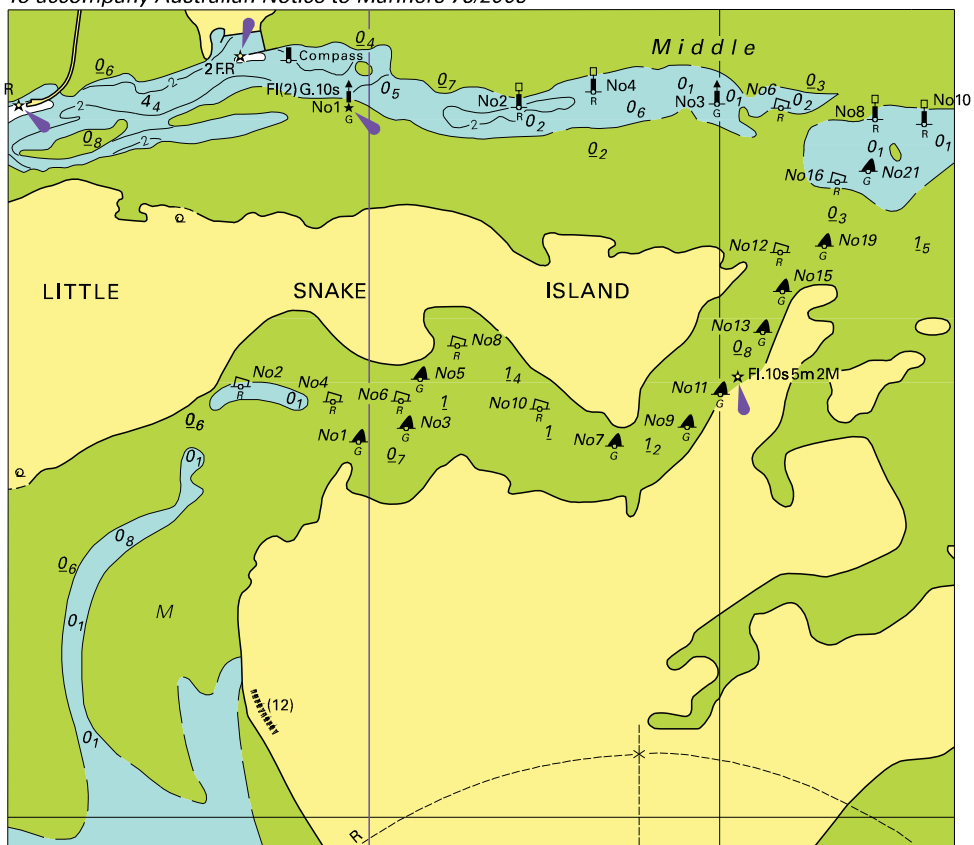
To accompany Australian Notice to Mariners 71/2009

Tidal Levels referred to Datum of Soundings								
Place	Lat S	Long E	Heights in metres above datum					
			HAT	MHHW	MLHW	MSL	MHLW	MLLW
Geelong	38° 09'	144° 22'	1·2	1·1	0·7	0·6	0·5	0·2

Block for chart Aus 153 © Commonwealth of Australia 2009

(107·9 x 37·6mm)

To accompany Australian Notice to Mariners 75/2009



Block for chart Aus 181

© Commonwealth of Australia 2009

(125.2 x 110.6 mm)