



Australian Notices to Mariners are the authority for correcting Australian Charts and Publications

AUSTRALIAN NOTICES TO MARINERS

Notices 1091 – 1147

Published fortnightly by the Australian Hydrographic Service

Commodore R. NAIRN RAN
Hydrographer of Australia

SECTIONS.	I.	Australian Notices to Mariners, including blocks and notes.
	II.	Hydrographic Reports.
	III.	Navigational Warnings.

For Notices affecting Admiralty List of Lights and Fog Signals; List of Radio Signals; and Sailing Directions see [British Notices to Mariners](#) or [BA Supplement](#).

The substance of these notices should be inserted on the charts affected.

Bearings are referred to the true compass and are reckoned clockwise from North; those relating to lights are given as seen by an observer from seaward. Positions quoted in permanent notices relate to the horizontal datum for the chart(s). When preliminary or temporary notices affect multiple charts, positions will be provided in relation to only one horizontal datum and that datum will be specified. When the multiple charts do not have a common horizontal datum, mariners will be required to adjust the position(s) for those charts not on the specified datum. The range quoted for a light is its nominal range. Depths are with reference to the chart datum of each chart. Heights are above mean high water springs or mean higher high water, as appropriate.

The capital letter (P) or (T) after the number of any notice denotes a preliminary or temporary notice respectively, which are contained separately at the end of the permanent notices. A star () adjacent to the number of a notice indicates that the notice is based on original information.*

Mariners are particularly requested to notify the AUSTRALIAN HYDROGRAPHIC SERVICE, Locked Bag 8801 Wollongong, NSW 2500 (Fax 02-4223 6599, e-mail Hydro.NTM@defence.gov.au or, alternatively by filling in and submitting the [Hydrographic Notes](#) forms located on the web site – www.hydro.gov.au), immediately on the discovery of new dangers or suspected dangers to navigation. For changes or defects in aids to navigation notify AusSAR (Fax 02-6230 6868 or email rccaus@amsa.gov.au).

Copies of Australian notices are available free of charge from the Australian Hydrographic Service (AHS) website (www.hydro.gov.au) and through the eNotices (email) service (www.hydro.gov.au/enotices/enotices.htm).

Individual Notices may be copied for the purpose of inserting Notice substance on official charts and publications. Paper copies may be printed by chart agents and distributed to customers on a cost recovery basis. Participating chart agents are listed on the AHS website as providing a 'Paper Notices to Mariners' service (www.hydro.gov.au/prodserv/distributors/distributors.htm). Copies of the notices may not be sold for profit without prior written agreement.

IMPORTANT NOTICE

This edition of Notices to Mariners includes all significant information affecting AHS products which the AHS has become aware of since the last edition. All reasonable efforts have been made to ensure the accuracy and completeness of the information, including third party information, on which these updates are based. The AHS regards third parties from which it receives information as reliable, however the AHS cannot verify all such information and errors may therefore exist. The AHS does not accept liability for errors in third party information.

© Commonwealth of Australia 2009

This work is copyright. Apart from any use permitted under the Copyright Act 1968, no part may be reproduced by any process, adapted, communicated or commercially exploited without prior written permission from The Commonwealth represented by the Australian Hydrographic Service.

NUMERICAL INDEX OF NOTICES TO MARINERS

Edition No 19

Notices	Aus Chart, INT Chart, ENC Cell, AHP
1091.....	Aus 84, 332, 333, 752, 753, 920, AU309145, 402147, 404151, 404152, 406154, 407154, 410144, 418123, 5XX222
1092.....	Aus 192, 806
1093.....	Aus 247, 265, 366, 819
1094.....	Aus 254
1095.....	Aus 259
1096.....	Aus 293
1097.....	Aus 294, 301, 376, 700
1098.....	Aus 26, 27, AX 72026
1099.....	Aus 320
1100.....	Aus 50
1101.....	Aus 55, 56, 740, 741
1102.....	Aus 744
1103.....	Aus 751
1104.....	Aus 752
1105.....	Aus 112, AX 63112
1106.....	Aus 111, 117, AX 70117
1107.....	Aus 115
1108.....	Aus 755, 756, AX 0755E
1109.....	Aus 137
1110.....	Aus 130, 137, 780, 781
1111.....	Aus 148
1112(T).....	Aus 193, 807, 808, AX 0808E, 60193, 67192, 70193, 436150, 5XX193
1113(T).....	Aus 198, 199, AU5198X9
1114(T).....	Aus 198, 199, AU5198X9
1115(T).....	Aus 198, 199, AU5198X9
1116(T).....	Aus 236
1117(T).....	Aus 236
1118(T).....	Aus 236
1119(T).....	Aus 236, AU5237X8
1120(T).....	Aus 237, AU5237X8
1121(T).....	Aus 237
1122(T).....	Aus 238, AU5237X8
1123(T).....	Aus 236, 237, AU5237X8
1124(T).....	Aus 236, 237, AU5237X8
1125(T).....	Aus 236
1126(T).....	Aus 235, 236
1127(T).....	Aus 241, 365, 817
1128(T).....	Aus 242, AU5XX242
1129(T).....	Aus 244, 245, AU5244X5
1130(T).....	Aus 245, AU5244X5
1131(T).....	Aus 247
1132(T).....	Aus 265, AU5247P1
1133(T).....	Aus 257, AU5XX257
1134(T).....	Aus 256, 257, AU5XX257
1135(T).....	Aus 270, AU5270P1
1136(T).....	Aus 270, AU5270P6
1137(T).....	Aus 376, 377, 840, AX 60377, AU410143
1138(T).....	Aus 289, AU411141
1139(T).....	Aus 4, AU5XX4P1
1140(T).....	Aus 323
1141(T).....	Aus 169, AU442148
1142(T).....	Aus 167, 799, AU442146, 5167X8
1143(T).....	Aus 143, 144, 158, AU439144
1144(P).....	Aus 143, 144, 154, 155, 158, AU438144, 439144, 5XX154
1145(T).....	Aus 154, AU5XX154
1146(T).....	Aus 143, 155
1147(T).....	Summer time

NUMERICAL INDEX OF CHARTS AFFECTED

Edition No 19

Aus Chart	Notices	Aus Chart	Notices
Aus 4.....	1139(T)	Aus 744	1102
Aus 26.....	1098	Aus 751	1103
Aus 27.....	1098	Aus 752	1091, 1104
Aus 50.....	1100	Aus 753	1091
Aus 55.....	1101	Aus 755	1108
Aus 56.....	1101	Aus 756	1108
Aus 84.....	1091	Aus 780	1110
Aus 111.....	1106	Aus 781	1110
Aus 112.....	1105	Aus 799	1142(T)
Aus 115.....	1107	Aus 806	1092
Aus 117.....	1106	Aus 807	1112(T)
Aus 130.....	1110	Aus 808	1112(T)
Aus 137.....	1109, 1110	Aus 817	1127(T)
Aus 143.....	1143(T), 1144(P), 1146(T)	Aus 819	1093
Aus 144.....	1143(T), 1144(P)	Aus 840	1137(T)
Aus 148.....	1111	Aus 920	1091
Aus 154.....	1144(P), 1145(T)	AX 0755E	1108
Aus 155.....	1144(P), 1146(T)	AX 0808E	1112(T)
Aus 158.....	1143(T), 1144(P)	AX 60193	1112(T)
Aus 167.....	1142(T)	AX 60377	1137(T)
Aus 169.....	1141(T)	AX 63112	1105
Aus 192.....	1092	AX 67192	1112(T)
Aus 193.....	1112(T)	AX 70117	1106
Aus 198.....	1113(T), 1114(T), 1115(T)	AX 70193	1112(T)
Aus 199.....	1113(T), 1114(T), 1115(T)	AX 72026	1098
Aus 235.....	1126(T)		
Aus 236.....	1116(T), 1117(T), 1118(T), 1119(T), 1123(T), 1124(T), 1125(T), 1126(T)		
Aus 237.....	1120(T), 1121(T), 1123(T) 1124(T)	ENC Cell	Notices
Aus 238.....	1122(T)	AU309145.....	1091
Aus 241.....	1127(T)	AU402147.....	1091
Aus 242.....	1128(T)	AU404151.....	1091
Aus 244.....	1129(T)	AU404152.....	1091
Aus 245.....	1129(T), 1130(T)	AU406154.....	1091
Aus 247.....	1093, 1131(T)	AU407154.....	1091
Aus 254.....	1094	AU410143.....	1137(T)
Aus 256.....	1134(T)	AU410144.....	1091
Aus 257.....	1133(T), 1134(T)	AU411141.....	1138(T)
Aus 259.....	1095	AU418123.....	1091
Aus 265.....	1093, 1132(T)	AU436150.....	1112(T)
Aus 270.....	1135(T), 1136(T)	AU438144.....	1144(P)
Aus 289.....	1138(T)	AU439144.....	1143(T), 1144(P)
Aus 293.....	1096	AU442146.....	1142(T)
Aus 294.....	1097	AU442148.....	1141(T)
Aus 301.....	1097	AU5XX4P1	1139(T)
Aus 320.....	1099	AU5XX154.....	1144(P), 1145(T)
Aus 323.....	1140(T)	AU5167X8	1142(T)
Aus 332.....	1091	AU5XX193.....	1112(T)
Aus 333.....	1091	AU5198X9	1113(T), 1114(T), 1115(T)
Aus 365.....	1127(T)	AU5XX222.....	1091
Aus 366.....	1093	AU5237X8	1119(T), 1120(T), 1122(T), 1123(T), 1124(T)
Aus 376.....	1097, 1137(T)	AU5XX242.....	1128(T)
Aus 377.....	1137(T)	AU5244X5	1129(T), 1130(T)
Aus 700.....	1097	AU5247P1	1132(T)
Aus 740.....	1101	AU5XX257.....	1133(T), 1134(T)
Aus 741.....	1101	AU5270P1	1135(T)
		AU5270P6	1136(T)

1091 AUSTRALIA - Product

Australian Hydrographic Service (AA420613, AA428525, AA430643, AA430675)

New Chart

<i>Chart</i>	<i>Published</i>	<i>Title and description of amendments</i>	<i>Scale</i>	<i>Index Chart</i>	<i>Price</i>
Aus 84	14/7/2009	Australia - West Coast - Western Australia - Plans in Western Australia (Sheet 6) Plans: Jurien Bay 30° 13' 18" S - 30° 21' 48" S 114° 55' 12" E - 115° 03' 08" E Port Gregory 28° 10' 06" S - 28° 12' 36" S 114° 11' 24" E - 114° 16' 04" E Port Denison 29° 15' 12" S - 29° 17' 16" S 114° 52' 16" E - 114° 56' 12" E <i>New chart providing improved coverage of Jurien Bay, Port Gregory and Port Denison.</i>	1:25 000 1:15 000 1:12 500	Aus 5001	\$35.00

New Edition

<i>Chart</i>	<i>Published</i>	<i>Title and description of amendments</i>	<i>Scale</i>	<i>Index Chart</i>	<i>Price</i>
Aus 752	14/7/2009	Australia - West Coast - Western Australia - Pelsaert Island to Beagle Islands 28° 58' 24" S - 29° 50' 24" S 113° 38' 00" E - 115° 12' 00" E <i>New edition referred to WGS84 datum and updated for maritime boundaries.</i>	1:150 000	Aus 5001	\$35.00
Aus 753	14/7/2009	Australia - West Coast - Western Australia - Beagle Islands to Lancelin 29° 44' 36" S - 31° 06' 00" S 114° 23' 36" E - 115° 23' 00" E <i>New edition referred to WGS84 datum and updated for maritime boundaries.</i>	1:150 000	Aus 5001	\$35.00
Aus 920	14/7/2009	Indian Ocean - Plans in Christmas Island Plans: Flying Fish Cove 10° 23' 57" S - 10° 26' 30" S 105° 38' 26" E - 105° 41' 09" E Norris Point 10° 26' 03" S - 10° 28' 36" S 105° 42' 08" E - 105° 43' 36" E <i>New edition with general updating throughout.</i>	1:7 500 1:7 500	Aus 5000	\$35.00

New Electronic Navigation Chart (Seafarer ENC)

<i>Cell Name</i>	<i>Released</i>	<i>Title</i>
AU402147	September 2009	Bismarck Sea - North East Approach to Manus Island
AU404151	September 2009	Bismarck Sea - New Ireland West Coast
AU404152	September 2009	South Pacific Ocean - Cape Sena to Cape Lemeris including Lihir Island
AU406154	September 2009	Solomon Sea - Cape Hanpan to Sipai
AU407154	September 2009	Solomon Sea - Western Approaches to Empress Augusta Bay
AU418123	September 2009	Western Australia - Point Torment to Derby
AU5XX222	September 2009	New South Wales - Clarence River and Approaches

New Edition to be published shortly

<i>Chart</i>	<i>Title</i>	<i>Scale</i>	<i>Expected Publication Date</i>	<i>Expected Stock Availability</i>
Aus 332	Australia - West Coast - Western Australia - Zuytdorp Point to Geraldton	1:300 000	25 September 2009	2 November 2009
Aus 333	Australia - West Coast - Western Australia - Geraldton to Wedge Island	1:300 000	25 September 2009	2 November 2009

1091 AUSTRALIA – Product (continued)**Chart permanently withdrawn**

Chart *On publication of new edition*

Aus 752 Aus 752

Aus 753 Aus 753

Aus 920 Aus 920

Electronic Navigation Chart (Seafarer ENC) permanently withdrawn

Cell

AU309145

AU410144

For further details refer to the AHS website at www.hydro.gov.au for new edition and new chart stock arrival information.

When placing orders with a chart agent, mariners should advise whether their order pertains to the current edition or the new edition.

1092* AUSTRALIA - NEW SOUTH WALES - Mowarry Point - Wreck

Australian Hydrographic Service (AA429109), Department of the Environment and Heritage (AA363674)

Aus 192 [472/2009]

Insert depth, 3m, enclosed by danger circle with legend *Wk* 37° 09'.057 S 150° 00'.433 E

Aus 806 [691/2009]

Delete non dangerous wreck 37° 09'.0 S 150° 03'.4 E

1093* AUSTRALIA - QUEENSLAND - Port Alma - Sea Reach - Wreck; depths

Maritime Safety Queensland (AA428603)

Aus 247 [1048/2009]

Insert depth, 9₉m, enclosed by danger circle with legend *Wk* 23° 30'.93 S 150° 56'.89 E

Delete depth, 7m, enclosed by danger circle with legend 23° 31'.1 S 150° 56'.8 E
depth, 7₆m 23° 30'.8 S 150° 56'.8 E

Aus 265 [1048/2009]

Insert accompanying block 23° 26'.5 S 150° 59'.0 E
depth, 9₆m, enclosed by danger circle with legend *Wk* 23° 30'.928 S 150° 56'.889 E

Delete depth, 7m, enclosed by danger circle with legend 23° 31'.07 S 150° 56'.82 E
depth, 10₆m 23° 30'.86 S 150° 56'.88 E

Aus 366 [695/2009]

Insert depth, 5₂fm, enclosed by danger circle with legend *Wk* 23° 31'.03 S 150° 56'.91 E

Delete depth, 3₅fm, enclosed by danger circle with legend 23° 31'.2 S 150° 56'.8 E

Aus 819 [1048/2009]

Insert depth, 9₆m, enclosed by danger circle with legend *Wk* 23° 30'.93 S 150° 56'.89 E

Delete depth, 7m, enclosed by danger circle with legend 23° 31'.1 S 150° 56'.8 E

1094* AUSTRALIA - QUEENSLAND - Whitsundays - Hook Island - Nav aids

Maritime Safety Queensland Notices 592/2009, 596/2009 (AA427451, AA428059, AA430516)

Aus 254 (plan, Stonehaven Anchorage) [1054/2007]

Insert	special spar buoy, without topmark	20° 06'.217 S	148° 54'.130 E
	port lateral spar buoy, without topmark	20° 04'.542 S	148° 54'.084 E
Substitute	port lateral spar buoy, without topmark for buoy	20° 04'.38 S	148° 54'.14 E
Delete	buoy	20° 05'.51 S	148° 53'.00 E
	buoy	20° 05'.01 S	148° 53'.70 E
	buoy	20° 06'.20 S	148° 54'.12 E
	underwater rock	20° 06'.21 S	148° 54'.12 E

1095* AUSTRALIA - QUEENSLAND - Lucinda - Buoys

Maritime Safety Queensland (AA4178847, AA417849 - AA417851)

Aus 259 (plan, Port of Lucinda) [756/2009]

Insert	port lateral cylindrical buoy, No2, without topmark	18° 30'.846 S	146° 19'.044 E
	port lateral cylindrical buoy, No6, without topmark	18° 30'.930 S	146° 19'.037 E
	port lateral cylindrical buoy, No8, without topmark	18° 31'.022 S	146° 19'.032 E
	port lateral cylindrical buoy, No10, without topmark	18° 31'.075 S	146° 19'.031 E
	isolated danger cylindrical buoy, without topmark	18° 31'.805 S	146° 18'.845 E
Delete	beacon	18° 30'.72 S	146° 18'.95 E
	beacon	18° 30'.81 S	146° 18'.91 E
	beacon	18° 30'.93 S	146° 18'.90 E
	buoy	18° 31'.78 S	146° 18'.87 E

1096* AUSTRALIA - QUEENSLAND - Hammond Island - Bruce Point - Light beacon

Australian Hydrographic Service (AA428823)

Aus 293 [647/2009]*On certain copies only*

Move	light beacon	10° 33'.59 S	142° 13'.27 E
	to	10° 33'.675 S	142° 13'.209 E

1097* AUSTRALIA - QUEENSLAND - Red Wallis Islet - Depth northwestwards

Auscoast Warning 211/2009 (AA428208), LADS Flight (AA428151, AA428152)

Aus 294 [540/2009]

Insert	depth, 4 ₃ m, enclosed by contour	10° 48'.96 S	141° 52'.99 E
--------	--	--------------	---------------

Aus 301 [541/2009]

Insert	depth, 4 ₃ m, enclosed by contour	10° 48'.96 S	141° 53'.00 E
--------	--	--------------	---------------

Delete	depth, 5 ₁ m	10° 49'.0 S	141° 53'.5 E
--------	-------------------------	-------------	--------------

Aus 376 [820/2009]

Insert	depth, 4 ₃ m, enclosed by contour	10° 48'.87 S	141° 53'.05 E
--------	--	--------------	---------------

Delete	depth, 5 ₁ m	10° 49'.0 S	141° 53'.5 E
--------	-------------------------	-------------	--------------

Aus 700 [542/2009]

Insert	depth, 4 ₃ m, enclosed by contour	10° 48'.87 S	141° 53'.05 E
--------	--	--------------	---------------

Delete	depth, 5 ₁ m	10° 49'.0 S	141° 53'.5 E
--------	-------------------------	-------------	--------------

1098* AUSTRALIA - NORTHERN TERRITORY - Darwin - Middle Arm - Light buoys altered

Darwin Port Corporation (AA427304, AA427305)

Aus 26 [996/2009]

Insert	structure colour, Y	12° 33'.32 S	130° 51'.05 E
	structure colour, Y	12° 32'.59 S	130° 50'.33 E
	structure colour, Y	12° 32'.48 S	130° 50'.51 E

Aus 27 [867/2009]

Insert	structure colour, Y	12° 33'.320 S	130° 51'.046 E
	structure colour, Y	12° 32'.592 S	130° 50'.326 E
	structure colour, Y	12° 32'.502 S	130° 50'.365 E
	structure colour, Y	12° 32'.483 S	130° 50'.505 E

AX 72026 [996/2009]

Insert	structure colour, Y	12° 33'.32 S	130° 51'.05 E
	structure colour, Y	12° 32'.59 S	130° 50'.33 E
	structure colour, Y	12° 32'.48 S	130° 50'.51 E

1099* AUSTRALIA - WESTERN AUSTRALIA - Heritage Reef - Nomenclature

Australian Hydrographic Service (AA428201)

Aus 320 [649/2009]

Amend	name to <i>Heritage Reef</i>	14° 15'.4 S	125° 11'.3 E
-------	------------------------------	-------------	--------------

1100* AUSTRALIA - WESTERN AUSTRALIA - Broome - Chart limits; plan withdrawn

Australian Hydrographic Service (AA419687)

Aus 50 [708/2009]

Insert	magenta limits, with legend <i>Aus 51</i> in SW corner, between	18° 01'.9 S	122° 10'.5 E
		18° 01'.9 S	122° 14'.2 E
		17° 59'.1 S	122° 14'.2 E
		17° 59'.1 S	122° 10'.5 E
		18° 01'.9 S	122° 10'.5 E
Delete	magenta limits, with legend See Plan, centred on plan, centred on	18° 00'.4 S	122° 13'.0 E
		17° 51'.5 S	122° 18'.5 E

1101* AUSTRALIA - WESTERN AUSTRALIA - Bezout Rock - Nomenclature

Landgate (AA429472)

Aus 55 [1054/2009]

Amend	name to <i>Bezout Rock</i>	20° 33'.0 S	117° 11'.4 E
-------	----------------------------	-------------	--------------

Aus 56 [1055/2009]

Amend	name to <i>Bezout Rock</i>	20° 33'.01 S	117° 11'.22 E
-------	----------------------------	--------------	---------------

Delete	name, Bezout Rock	20° 33'.87 S	117° 09'.97 E
--------	-------------------	--------------	---------------

Aus 740 [870/2009]

Amend	name to <i>Bezout Rock</i>	20° 33'.2 S	117° 11'.7 E
-------	----------------------------	-------------	--------------

Aus 741 [828/2009]

Amend	name to <i>Bezout Rock</i>	20° 33'.2 S	117° 11'.7 E
-------	----------------------------	-------------	--------------

1102* AUSTRALIA - WESTERN AUSTRALIA - Exmouth - ZOC diagram; chart notes; legends

Australian Hydrographic Service (AA429040)

Aus 744 [605/2009]

Amend	legend to C	22° 22'.5 S	114° 34'.5 E
	legend to <i>Unsurveyed</i>	21° 54'.4 S	114° 30'.8 E
	legend to <i>Inadequately Surveyed (see ZOC)</i>	21° 47'.2 S	114° 34'.7 E
Delete	note, UNSURVEYED AREAS	21° 55'.5 S	144° 55'.8 E
	note, INADEQUATELY SURVEYED	21° 57'.0 S	114° 55'.8 E

1103* AUSTRALIA - WESTERN AUSTRALIA - Port Gregory - Chart limits; plan withdrawn

Australian Hydrographic Service (AA420613)

Aus 751 [422/2009]

Insert	magenta limits, with legend <i>Aus 84</i> in SW corner, between	28° 10'.61 S	114° 11'.32 E
		28° 12'.67 S	114° 11'.32 E
		28° 12'.67 S	114° 15'.99 E
		28° 10'.61 S	114° 15'.99 E
Delete	magenta limits, with legend See Plan, centred on plan, centred on	28° 11'.5 S	114° 14'.2 E
		28° 16'.5 S	114° 50'.0 E

1104* AUSTRALIA - WESTERN AUSTRALIA - Pelsaert Island to Beagle Islands - Chart note

UKHO (AA429297)

Aus 752 [NE 14/8/2009]

Insert	accompanying note	29° 14'.5 S	115° 02'.5 E
--------	-------------------	-------------	--------------

1105* AUSTRALIA - WESTERN AUSTRALIA - Fremantle - Chart note

Australian Hydrographic Service (AA429259)

Aus 112 [606/2009]

Substitute	accompanying note for TS note	31° 55'.7 S	115° 47'.0 E
------------	-------------------------------	-------------	--------------

AX 63112 [606/2009]

Substitute	accompanying note for TS note	31° 55'.7 S	115° 47'.0 E
------------	-------------------------------	-------------	--------------

1106* AUSTRALIA - WESTERN AUSTRALIA - Cockburn Sound - AnchoragesHMAS *Stirling* (AA429012)**Aus 111 [654/2009]**

Insert	anchor berth, desig <i>B1</i> , with 370m swinging circle	32° 11'.665 S	115° 41'.370 E
	anchor berth, desig <i>C1</i> , with 185m swinging circle	32° 12'.730 S	115° 41'.970 E
	anchor berth, desig <i>C2</i> , with 185m swinging circle	32° 12'.520 S	115° 41'.815 E
	anchor berth, desig <i>C3</i> , with 185m swinging circle	32° 12'.310 S	115° 41'.635 E
	anchor berth, desig <i>C4</i> , with 185m swinging circle	32° 12'.090 S	115° 41'.490 E

Aus 111 (inset, Sulphur Bay)

Insert	anchor berth, desig <i>A1</i> , with 185m swinging circle	32° 10'.790 S	115° 40'.985 E
--------	---	---------------	----------------

Aus 117 [872/2009]

Insert	anchor berth, desig <i>A1</i> , with 185m swinging circle	32° 10'.790 S	115° 40'.985 E
	anchor berth, desig <i>B1</i> , with 370m swinging circle	32° 11'.665 S	115° 41'.370 E
	anchor berth, desig <i>C1</i> , with 185m swinging circle	32° 12'.730 S	115° 41'.970 E
	anchor berth, desig <i>C2</i> , with 185m swinging circle	32° 12'.520 S	115° 41'.815 E
	anchor berth, desig <i>C3</i> , with 185m swinging circle	32° 12'.310 S	115° 41'.635 E
	anchor berth, desig <i>C4</i> , with 185m swinging circle	32° 12'.090 S	115° 41'.490 E

AX 70117 [872/2009]

Insert	anchor berth, desig <i>A1</i> , with 185m swinging circle	32° 10'.790 S	115° 40'.985 E
	anchor berth, desig <i>B1</i> , with 370m swinging circle	32° 11'.665 S	115° 41'.370 E
	anchor berth, desig <i>C1</i> , with 185m swinging circle	32° 12'.730 S	115° 41'.970 E
	anchor berth, desig <i>C2</i> , with 185m swinging circle	32° 12'.520 S	115° 41'.815 E
	anchor berth, desig <i>C3</i> , with 185m swinging circle	32° 12'.310 S	115° 41'.635 E
	anchor berth, desig <i>C4</i> , with 185m swinging circle	32° 12'.090 S	115° 41'.490 E

1107* AUSTRALIA - WESTERN AUSTRALIA - Bunbury - Chart note

Australian Hydrographic Service (AA363515)

Aus 115 [948/2009]

Delete	note, OMISSIONS FROM CHART	33° 25'.1 S	115° 39'.2 E
--------	----------------------------	-------------	--------------

1108* AUSTRALIA - WESTERN AUSTRALIA - Geographe Bay - Buoys

Department of Transport WA (AA427260)

Aus 755 [872/2009]

Delete	buoy	33° 34'.9 S	115° 10'.1 E
	topmark	33° 32'.9 S	115° 06'.0 E

Aus 756 [949/2009]

Delete	buoy	33° 34'.9 S	115° 10'.1 E
	topmark	33° 32'.9 S	115° 06'.0 E

AX 0755E [872/2009]

Delete	buoy	33° 34'.9 S	115° 10'.1 E
	topmark	33° 32'.9 S	115° 06'.0 E

1109* AUSTRALIA - SOUTH AUSTRALIA - Adelaide - Infrastructure

Techport Australia (AA426701 - AA426703)

Aus 137 [423/2009]

Insert	accompanying block	34° 47'.0 S	138° 30'.7 E
--------	--------------------	-------------	--------------

1110* AUSTRALIA - SOUTH AUSTRALIA - Adelaide - North Haven - Light altered
 Department for Transport, Energy and Infrastructure SA Notice 47/2009 (AA429471)

Aus 130 [200/2009]			
Amend	light to <i>Fl.G.2s 5M</i>	34° 47'.74 S	138° 28'.90 E
Aus 137 [1109/2009]			
Amend	light to <i>Fl.G.2s 5M</i>	34° 47'.74 S	138° 28'.90 E
Aus 780 [830/2009]			
Amend	light to <i>Fl.G.2s</i>	34° 47'.9 S	138° 29'.0 E
Aus 781 [919/2008]			
Amend	light to <i>Fl.G.2s</i>	34° 47'.9 S	138° 28'.8 E
Aus 781 (plan, Approaches to Port Adelaide)			
Amend	light to <i>Fl.G.2s</i>	34° 47'.8 S	138° 28'.8 E

1111* AUSTRALIA - BASS STRAIT - Hogan Island - Chart note
 Australian Hydrographic Service (AA428292)

Aus 148 (plan, Hogan Group) [314/2009]			
Delete	note, GAS PIPELINES	39° 10'.8 S	147° 04'.8 E

1112(T)/2009 AUSTRALIA - NEW SOUTH WALES - Jervis Bay - Military exercise completed

Former Notice - 1007(T)/2009 is cancelled
Department of Defence (AA430654)

Cancel this notice on receipt.

Chart formerly affected – Aus 193 – Aus 807 – Aus 808 – AX 0808E – AX 60193 – AX 67192 – AX 70193 - AU436150 - AU5XX193

1113(T)/2009 AUSTRALIA - NEW SOUTH WALES - Botany Bay - Harbour works

Date - Until 31 March 2011
NSW Maritime Notice SU0807 (AA430317)

Works associated with the expansion of the container terminal at Brotherson Dock are in progress north of a line between positions 33° 58'.43 S 151° 11'.66 E and 33° 58'.19 S 151° 12'.47 E, marked by a silt curtain and special light buoys.

A designated gate marked by port and starboard lateral buoys exist at the western end of the silt curtain.

Access to Penrhyn boat ramp is via 30m wide navigation channel through the works area, marked by special light buoys.

A maximum speed limit of 8 knots applies to all vessels and wash kept to minimum. Anchoring of and drifting by recreational vessels is prohibited. Vessel operators must not enter the works area from the temporary navigation channel and vessels must keep well clear of any service craft, equipment and the actual construction area.

Scientific instruments marked by special light buoys exist in the following positions:

33° 58'.60 S 151° 11'.15 E
33° 57'.82 S 151° 10'.30 E
33° 58'.38 S 151° 11'.88 E
33° 58'.35 S 151° 12'.15 E
33° 57'.25 S 151° 11'.55 E
33° 57'.37 S 151° 11'.63 E
33° 57'.45 S 151° 11'.82 E

For further information visit www.maritime.nsw.gov.au.

Chart temporarily affected – Aus 198 – Aus 199 - AU5198X9**1114(T)/2009 AUSTRALIA - NEW SOUTH WALES - Botany Bay - Pipeline**

Date - Until 31 March 2010
NSW Maritime Notice SU0911 (AA430370)

Works associated with Energy Australia's Botany Bay Cable Project are in progress in areas defined by the following positions:

La Perouse

33° 59'.48 S 151° 13'.77 E
33° 59'.53 S 151° 13'.70 E
33° 59'.41 S 151° 13'.58 E
33° 59'.36 S 151° 13'.65 E

Yarra Bay

33° 58'.81 S 151° 13'.72 E
33° 58'.67 S 151° 13'.55 E
33° 58'.67 S 151° 13'.49 E
33° 58'.92 S 151° 13'.45 E
33° 58'.71 S 151° 13'.10 E

The areas are marked by special light buoys every 100m.

All vessels and pontoons will display appropriate lights.

For further information visit www.maritime.nsw.gov.au.

Chart temporarily affected – Aus 198 – Aus 199 - AU5198X9

1115(T)/2009 AUSTRALIA - NEW SOUTH WALES - Botany Bay - Dredging operations; pipeline*Date - Until 31 December 2009*

NSW Maritime Notices SU0916, SU0907 (AA430421, AA430422)

Dredging operations and pipe laying works associated with the Sydney Desalination Project are in progress.

Dredging operations exist in an area defined by the following positions:

33° 58'.00 S 151° 10'.28 E

33° 58'.67 S 151° 10'.63 E

33° 58'.82 S 151° 10'.25 E

33° 58'.13 S 151° 09'.88 E.

A floating pipeline marked by special lights exists between the dredge and a floating pontoon (33° 58'.13 S 151° 10'.23 E), marked by a port lateral light buoy. A submerged pipeline exists between the pontoon and a second pontoon (33° 57'.48 S 151° 10'.07 E), marked by a starboard lateral light buoy. A floating pipeline exists from the starboard lateral light buoy to a disposal barge located in an area (construction zone) marked by special light buoys, defined by the following positions:

33° 56'.97 S 151° 10'.02 E

33° 57'.00 S 151° 10'.13 E

33° 57'.27 S 151° 09'.80 E

33° 57'.10 S 151° 09'.80 E.

A 1200m wide access gate is provided for vessels to transit through the works.

All vessels and pontoons involved in the works will display appropriate lights.

Pipe laying operations exist between the construction zone and the following positions:

33° 57'.57 S 151° 09'.83 E

33° 59'.08 S 151° 10'.67 E

33° 59'.67 S 151° 11'.53 E

34° 00'.05 S 151° 11'.93 E

34° 00'.12 S 151° 12'.00 E.

A pipe laying barge and support vessels are onsite.

The area will be marked by special light buoys and vessels are not permitted to enter the area without permission.

For further information visit www.maritime.nsw.gov.au.

Chart temporarily affected – Aus 198 – Aus 199 - AU5198X9**1116(T)/2009 AUSTRALIA - QUEENSLAND - Moreton Bay - Ship to ship transfer completed***Former Notice - 838(T)/2009 is cancelled*

Maritime Safety Queensland Notice 431(T)/2009 (AA415418)

Cancel this notice on receipt.

Chart formerly affected – Aus 236**1117(T)/2009 AUSTRALIA - QUEENSLAND - Moreton Bay - North Stradbroke Island - Amity - Harbour works***Former Notice - 719(T)/2009 is cancelled**Date - Until 31 December 2009*

Maritime Safety Queensland Notices 282(T)/2009, 315(T)/2009, 605(T)/2009 (AA405402, AA411788, AA428787)

Construction works on the boat ramp (27° 24'.02 S 153° 26'.23 E) are in progress.

The boat ramp is closed to all vessels during this period.

Chart temporarily affected – Aus 236

1118(T)/2009 AUSTRALIA - QUEENSLAND - Moreton Bay - Wellington Point - Harbour works completed

Former Notice - 711(T)/2008 is cancelled
 Maritime Safety Queensland Notice 613/2009 (AA429786)

Cancel this notice on receipt.

Chart formerly affected – Aus 236**1119(T)/2009 AUSTRALIA - QUEENSLAND - Moreton Bay - Manly - Harbour works; dredging operations**

Former Notice - 434(T)/2009 is cancelled
Date - Until 31 December 2009
 Maritime Safety Queensland Notices 140(T)/2009, 319(T)/2009, 621(T)/2009 (AA390773, AA408563, AA429669)

Harbour works and dredging operations associated with the marina redevelopment are in progress in Manly Boat Harbour (27° 27'.22 S 153° 11'.40 E).

The dredge *Ken Harvey*, MT *Sealion*, MT *Turtle* and two spoil barges are onsite and will display appropriate lights and signals.

The dredge has deployed six anchors, marked by light buoys, Q.Y.

Lit mooring buoys, Q.Y, exist in positions 27° 26'.74 S 153° 12'.05 E and 27° 26'.70 S 153° 12'.14 E.

The starboard light beacon, *Fl.G.3s* (27° 27'.29 S 153° 11'.50 E), has been withdrawn.

The western internal channel is closed for the duration of the works. Vessels requiring access to and from the harbour must use the eastern internal entrance.

Vessels transiting the channel during daylight hours, Monday to Friday, are to contact the dredge on VHF Ch 13 to request the mooring wires be lowered.

Mariners are advised to navigate with caution in the area.

Chart temporarily affected – Aus 236 - AU5237X8**1120(T)/2009 AUSTRALIA - QUEENSLAND - Brisbane River - Fisherman Islands - Moorings recovered**

Former Notice - 1145(T)/2008 is cancelled
 Maritime Safety Queensland Notice 613/2009 (AA429786)

Cancel this notice on receipt.

Chart formerly affected – Aus 237 - AU5237X8**1121(T)/2009 AUSTRALIA - QUEENSLAND - Brisbane River - Fisherman Islands - Floating pipeline removed**

Former Notice - 1131(T)/2007 is cancelled
 Maritime Safety Queensland Notice 613/2009 (AA429786)

Cancel this notice on receipt.

Chart formerly affected – Aus 237**1122(T)/2009 AUSTRALIA - QUEENSLAND - Brisbane River - Gibson Island - Harbour works completed**

Former Notice - 955(T)/2009 is cancelled
 Maritime Safety Queensland Notice 527(T)/2009 (AA421759)

Cancel this notice on receipt.

Chart formerly affected – Aus 238 - AU5237X8

1123(T)/2009 AUSTRALIA - QUEENSLAND - Brisbane River - Old Bar Cutting - Light beacon re-established
Former Notice - 500(T)/2009 is cancelled
Maritime Safety Queensland Notice 613/2009 (AA429786)

Cancel this notice on receipt.

Chart formerly affected – Aus 236 – Aus 237 - AU5237X8

1124(T)/2009 AUSTRALIA - QUEENSLAND - Moreton Bay - Bramble Bay - Wave power converter removed
Former Notice - 1072(T)/2009 is cancelled
Maritime Safety Queensland Notice 617(T)/2009 (AA429427)

Cancel this notice on receipt.

Chart formerly affected – Aus 236 – Aus 237 - AU5237X8

1125(T)/2009 AUSTRALIA - QUEENSLAND - Moreton Bay - Scarborough - Dredging operations completed
Former Notice - 956(T)/2009 is cancelled
Maritime Safety Queensland Notice 512(T)/2009 (AA420573)

Cancel this notice on receipt.

Chart formerly affected – Aus 236

1126(T)/2009 AUSTRALIA - QUEENSLAND - Moreton Bay - Pumicestone Channel - Beacon re-established
Former Notice - 928(T)/2008 is cancelled
Maritime Safety Queensland Notice 613/2009 (AA429786)

Cancel this notice on receipt.

Chart formerly affected – Aus 235 – Aus 236

1127(T)/2009 AUSTRALIA - QUEENSLAND - Great Sandy Strait - Light beacon re-established
Former Notice - 248(T)/2008 is cancelled
Maritime Safety Queensland Notice 629/2009 (AA429775)

Cancel this notice on receipt.

Chart formerly affected – Aus 241 – Aus 365 – Aus 817

1128(T)/2009 AUSTRALIA - QUEENSLAND - Bundaberg - Town Reach - Obstruction
Maritime Safety Queensland Notice 608(T)/2009 (AA428783)

An obstruction exists in position 24° 51'.74 S 152° 21'.30 E.

Mariners are advised to navigate with caution in the area.

Chart temporarily affected – Aus 242 - AU5XX242

1129(T)/2009 AUSTRALIA - QUEENSLAND - South Passage Island to Friend Point - Scientific instruments recovered
Former Notice - 1018(T)/2009 is cancelled
Maritime Safety Queensland Notice 577(T)/2009 (AA425141)

Cancel this notice on receipt.

Chart formerly affected – Aus 244 – Aus 245 - AU5244X5

1130(T)/2009 AUSTRALIA - QUEENSLAND - Gladstone - North Passage Island - Scientific instrument recovered
Former Notice - 961(T)/2009 is cancelled
 Maritime Safety Queensland Notice 607/2009 (AA428782)

Cancel this notice on receipt.

Chart formerly affected – Aus 245 - AU5244X5

1131(T)/2009 AUSTRALIA - QUEENSLAND - Port Alma - Sea Reach - Light buoy re-established
Former Notice - 92(T)/2009 is cancelled
 Maritime Safety Queensland Notice 613/2009 (AA429786)

Cancel this notice on receipt.

Chart formerly affected – Aus 247

1132(T)/2009 AUSTRALIA - QUEENSLAND - Port Alma - Harbour works completed
Former Notice - 1021(T)/2009 is cancelled
 Maritime Safety Queensland Notice 565(T)/2009 (AA424357)

Cancel this notice on receipt.

Chart formerly affected – Aus 265 - AU5247P1

1133(T)/2009 AUSTRALIA - QUEENSLAND - Townsville - Ross Creek - Light beacons withdrawn; light buoys established
 Maritime Safety Queensland Notice 624(T)/2009 (AA429766)

Light beacons *Fl.R.3s* (19° 15'.03 S 146° 49'.80 E) and *Fl.G.3s* (19° 15'.01 S 146° 49'.77 E) have been withdrawn; a port lateral light buoy, *Fl.R.3s*, and a starboard lateral light buoy, *Fl.G.3s*, exist in situ.

Chart temporarily affected – Aus 257 - AU5XX257

1134(T)/2009 AUSTRALIA - QUEENSLAND - Townsville - Obstruction
 Maritime Safety Queensland Notice 616(T)/2009 (AA429429)

An obstruction marked by an isolated danger light buoy, *Fl(2)10s*, exists in position 19° 14'.70 S 146° 50'.36 E.

Mariners are advised to navigate with caution in the area.

Chart temporarily affected – Aus 256 – Aus 257 - AU5XX257

1135(T)/2009 AUSTRALIA - QUEENSLAND - Port Douglas - Light beacon withdrawn; light buoy established
 Maritime Safety Queensland Notice 625(T)/2009 (AA429773)

No 7 light beacon (16° 28'.98 S 145° 27'.57 E) has been withdrawn; a yellow light buoy, *Fl.G.2.5s*, exists in situ.

Chart temporarily affected – Aus 270 - AU5270P1

1136(T)/2009 AUSTRALIA - QUEENSLAND - Cooktown - Light buoy repositioned; light buoy established
Former Notice - 1077(T)/2009 is cancelled
 Maritime Safety Queensland Notice 637(T)/2009 (AA430661)

No1 light buoy has been repositioned to 15° 27'.20 S 145° 15'.34 E. No2 port lateral light beacon (15° 27'.24 S 145° 15'.36 E) has been withdrawn; a port lateral light buoy, *Fl.R.2.5s*, exists in position 15° 27'.22 S 145° 15'.34 E.

Chart temporarily affected – Aus 270 - AU5270P6

1137(T)/2009 AUSTRALIA - TORRES STRAIT - Stephens Islet - Wreck northwards

Auscoast Warnings 215/2009, 216/2009 (AA429085, AA430163), Australian Maritime Safety Authority (AA429037)

A wreck, FV *Poseidon*, marked by a wreck light buoy, *Al.Oc.BuY*, exists in position 9° 23'.38 S 143° 34'.42 E.

Mariners are advised to navigate with caution in the area.

Chart temporarily affected – Aus 376 – Aus 377 – Aus 840 – AX 60377 - AU410143

1138(T)/2009 AUSTRALIA - TORRES STRAIT - Varzin Passage - Depth anomalies

Australian Maritime Safety Authority, Australian Hydrographic Service (AA430321)

Within ENC cell AU411141 some soundings in Varzin Passage are shoaler than charted on Aus 289. Where disagreement exists, the deeper depths as charted on Aus 289 should be taken as correct. An update to ENC cell AU411141 will be released shortly.

The following depths contained within the ENC cell are incorrect:

8₇m 10° 32'.171 S 141° 55'.637 E
 9₈m 10° 32'.183 S 141° 55'.885 E
 9₂m 10° 31'.686 S 141° 56'.281 E
 10₃m 10° 31'.859 S 141° 56'.181 E
 10₄m 10° 31'.908 S 141° 55'.768 E
 9₉m 10° 31'.678 S 141° 53'.806 E
 9₇m 10° 31'.643 S 141° 54'.837 E
 9₇m 10° 31'.676 S 141° 54'.510 E
 9₇m 10° 31'.492 S 141° 54'.431 E
 9₈m 10° 31'.691 S 141° 52'.209 E
 9₆m 10° 31'.391 S 141° 52'.916 E
 9₉m 10° 31'.309 S 141° 52'.648 E

Chart temporarily affected – Aus 289 - AU411141

1139(T)/2009 AUSTRALIA - QUEENSLAND - Weipa - Dredging operations completed

Former Notice - 969(T)/2009 is cancelled

Maritime Safety Queensland Notice 526(T)/2009 (AA421760)

Cancel this notice on receipt.

Chart formerly affected – Aus 4 - AU5XX4P1

1140(T)/2009 AUSTRALIA - WESTERN AUSTRALIA - Packer Island to North Head - Scientific instruments recovered

Former Notice - 673(T)/2009 is cancelled

MetOcean Engineers (AA429344, AA429345)

Cancel this notice on receipt.

Chart formerly affected – Aus 323

1141(T)/2009 AUSTRALIA - TASMANIA - Georges Bay - Wreck

Marine and Safety Tasmania M124/2009 (AA430468)

A stranded wreck exists in the vicinity of The Barway (41° 16'.62 S 148° 19'.88 E).

Chart temporarily affected – Aus 169 - AU442148

1142(T)/2009 AUSTRALIA - TASMANIA - Port Dalrymple - Scientific instruments

Date - Until 30 September 2010

MetOcean Engineers (AA429344, AA429345)

Scientific instruments marked by surface floats exist in the following positions:

40° 59'.08 S 146° 46'.70 E

41° 00'.27 S 146° 51'.65 E

41° 03'.70 S 146° 45'.05 E

Chart temporarily affected – Aus 167 – Aus 799 - AU442146 - AU5167X8**1143(T)/2009 AUSTRALIA - VICTORIA - Port Phillip - Great Ship Channel - Diving operations**

Date - Until 23 October 2009

Victorian Notice 127(T)/2009 (AA430202)

Diving operations are in progress on the centre line in the Great Ship Channel in the vicinity of Rip Bank (38° 18'.04 S 144° 37'.68 E) and Nepean Bank (38° 17'.86 S 144° 38'.55 E).

The vessel *Barwon Pride* is onsite and can be contacted on VHF Ch 12 and mobile 0417 553 229.

Vessels intending to navigate through Port Phillip Heads during the operations must contact Lonsdale VTS at least 1 hour prior to the intended transit.

Further information on the location and progress of the operation can be obtained from Lonsdale VTS on VHF CH 12.

Chart temporarily affected – Aus 143 – Aus 144 – Aus 158 - AU439144**1144(P)/2009 AUSTRALIA - VICTORIA - Port Phillip - South Channel - Light beacons to be established**

Former Notice - 1032(P)/2009 is cancelled

Date - Until 30 September 2009

Port of Melbourne Corporation (AA429575)

No2 (38° 17'.72 S 144° 42'.49 E) and No4 (38° 18'.00 S 144° 43'.83 E) light beacons have been withdrawn.

Port lateral light buoys exist as follows:

Position	Remarks
38° 17'.71 S 144° 42'.51 E	Fl.R.3s
38° 17'.98 S 144° 43'.84 E	Fl(2)R.5s

Light beacons will be established as follows:

Position	Remarks
38° 17'.71 S 144° 42'.51 E	Fl.R.3s No2
38° 17'.98 S 144° 43'.84 E	Fl(2)R.5s No4
38° 19'.50 S 144° 55'.48 E	Fl(2)G.5s No21

The barges *Jub 2* and *Taree* and support vessels *Taurus* and *Abyss* will be onsite.

Further information can be obtained by contacting the barge on VHF Ch 12, through Lonsdale VTS and on 0408 330 593.

Mariners are advised to navigate with caution in the area.

Chart which will be affected – Aus 143 – Aus 144 – Aus 154 – Aus 155 – Aus 158 - AU438144 - AU439144 - AU5XX154

1145(T)/2009 AUSTRALIA - VICTORIA - Port Phillip - Williamstown - Diving operations

Date - Until 10 October 2009

Victorian Notice 126(T)/2009 (AA430199)

Diving operations are in progress in the vicinity of Gellibrand Pier (37° 51'.69 S 144° 54'.98 E).

The port lateral light buoy (37° 51'.70 S 144° 54'.99 E) has been temporarily withdrawn.

A jack-up barge and support vessel are on site and will be relocated to a lay by berth clear of the Williamstown Channel and Gellibrand dock during the hours of darkness.

The barge can be contacted on VHF Ch 12 and mobile 0408 846 822. Further information can be obtained from Melbourne VTS on VHF Ch 12.

Chart temporarily affected – Aus 154 - AU5XX154**1146(T)/2009 AUSTRALIA - VICTORIA - Port Phillip - Ricketts Point - Beacon re-established**

Former Notice - 361(T)/2008 is cancelled

Victorian Notice 123/2009 (AA428788)

Cancel this notice on receipt.

Chart formerly affected – Aus 143 – Aus 155**1147(T)/2009 AUSTRALIA - Summer time**

Australian Government (AA427339)

Clocks will be advanced one hour at 0200 local time on 4 OCT 2009 and retarded one hour on 4 APR 2010 in the Australian Capital Territory, New South Wales, South Australia, Victoria and Tasmania.

No changes will be made in Queensland, Northern Territory and Western Australia.

HYDROGRAPHIC REPORTS

<i>Locality</i>	<i>Report</i>	<i>Ship/Authority</i>	<i>Observer</i>
NT- Saint Asaph Bay	Depths	ACV <i>Storm Bay</i>	

NAVIGATION WARNINGS

The following radio messages have been received during the period to 25 September 2009. Signal copies of these messages may be destroyed. It is recommended that the reprint of Navigational Warnings should be kept in a file or a book divided into areas. Cancellation should be made on receipt of signals and reprints.

Rigs on location other than those listed in the latest Section III summary are the subject of Radio Navigational Warnings. Rigs in transit will not be the subject of Warnings.

AUSCOAST WARNING

- 214 Drill rig *West Triton* in position 12° 41'.34 S 124° 31'.83 E. 2.5M clearance requested.
 215 Cancelled.
 216 Wreck buoy located in position 9° 23'.3 S 143° 34'.4 E. Blue and yellow vertical stripe buoy fitted with yellow over blue strobe light.
 217 Cancelled.
 218 Drill rig *Ocean Shield* in position 10° 53'.58 S 126° 44'.35 E. 2.5M clearance requested.
 219 Cancelled.
 220 Cancelled.
 221 Cancelled.
 222 Drill rig *Ocean Epoch* in position 21° 29'.97 S 114° 07'.61 E. 2.5M clearance requested.
 223 Cancelled.
 224 Cancelled.
 225 Eel Reef light K3241 (12° 24'.52 S 143° 22'.33 E) unlit.
 226 Drill rig *Stena Clyde* in position 21° 19'.83 S 114° 02'.53 E. 2.5M clearance requested.

NAVAREA X WARNINGS

Nil.

Navigational warnings in force as at 250001UTC SEP 09.**Auscoast**

102 128 134 161 166 170 188 191 194 196 211 213 214 216 218 222 225 226

Navarea X

Nil.

Summary of mobile drilling rigs as at 250001UTC SEP 09.

<i>Name</i>	<i>Position</i>
Songa Venus	10° 49'.02 S 126° 09'.21 E
Ocean Shield	10° 53'.58 S 126° 44'.35 E
West Triton	12° 41'.34 S 124° 31'.83 E
Transocean Legend	13° 24'.73 S 122° 08'.78 E
Atwood Eagle	19° 54'.48 S 115° 07'.55 E
Ensco 7500	20° 12'.90 S 114° 32'.20 E
Jack Bates	20° 03'.85 S 113° 35'.98 E
Stena Clyde	21° 19'.83 S 114° 02'.53 E
Ocean Epoch	21° 29'.97 S 114° 07'.61 E
Nan Hai 6	21° 29'.20 S 113° 58'.70 E

NAVAREA XIV WARNINGS

Nil.

Navarea XIV warnings in force as at 250001UTC SEP 09.

Nil.

To accompany Australian Notice to Mariners 1104/2009

ROCK LOBSTER FISHERY

Between November and June, extensive lobster fishing takes place on the continental shelf between the latitudes 24° S and 34° S. When passage permits, mariners are requested to transit outside the 200 metre contour.

Note for chart Aus 752.

To accompany Australian Notice to Mariners 1105/2009

TIDAL STREAMS AND CURRENTS

For information on tidal streams and currents see Australia Pilot Vol I NP 13.

Note for chart Aus 112.

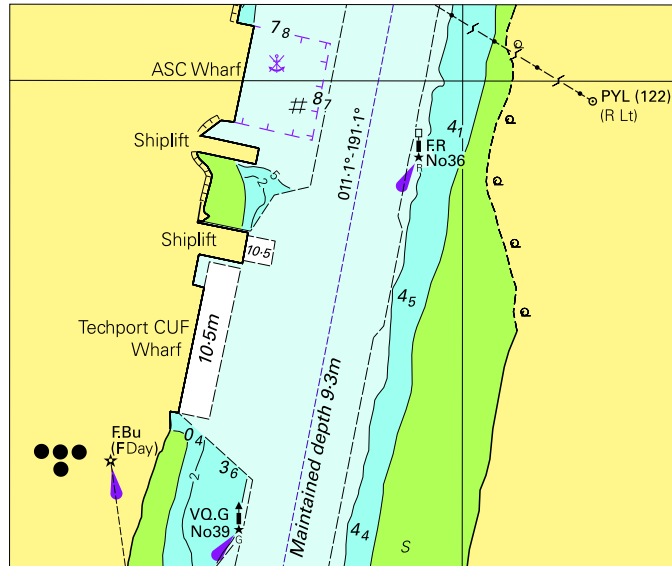
To accompany Australian Notice to Mariners 1105/2009

TIDAL STREAMS AND CURRENTS

For information on tidal streams and currents see Australia Pilot Vol I NP 13.

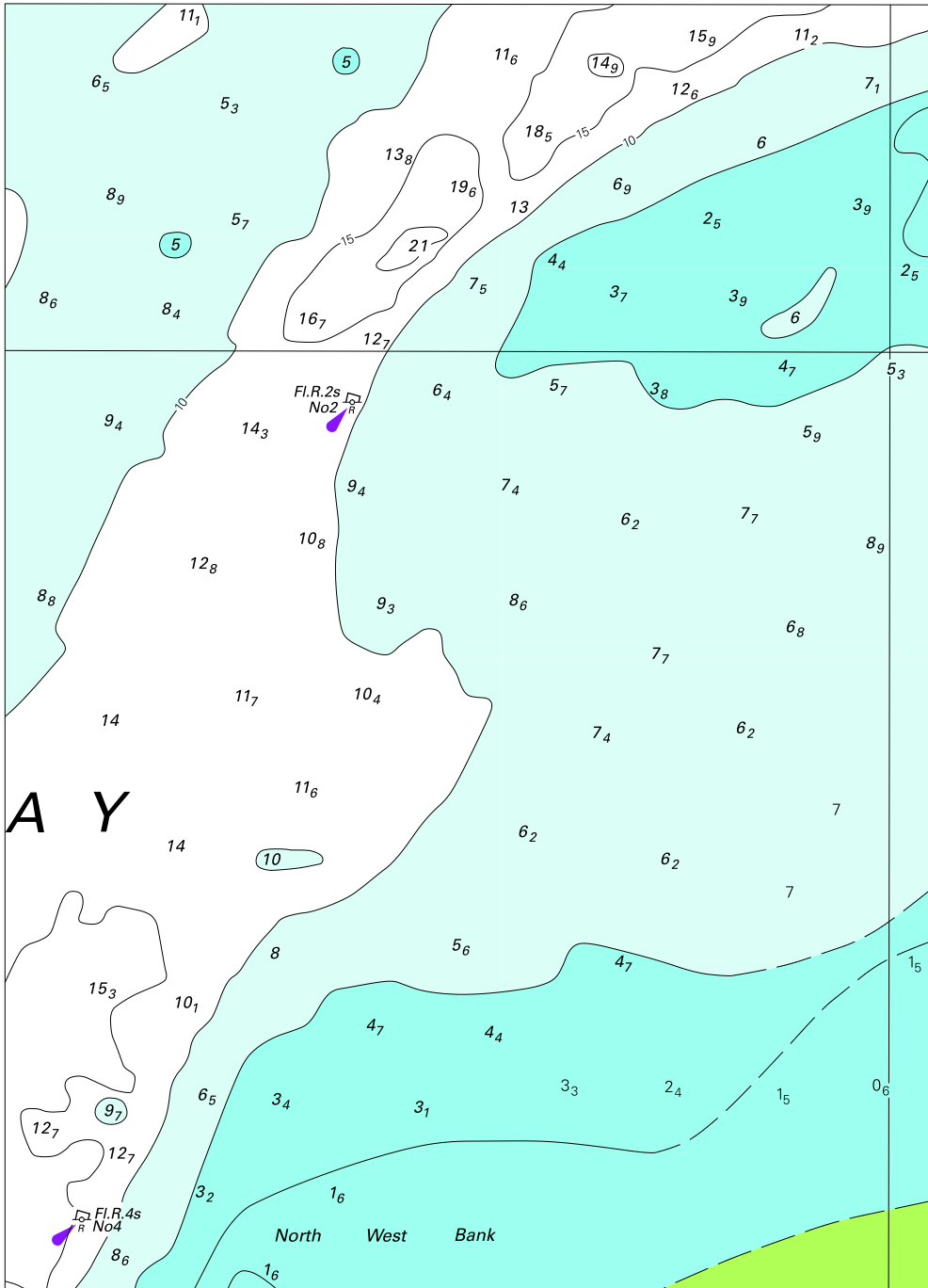
Note for chart AX 63112.

To accompany Australian Notices to Mariners 1109/2009



Block for Aus 137 © Commonwealth of Australia 2009 (88.5 x 74.4mm)

To accompany Australian Notice to Mariners 1093/2009



Block for chart Aus 265

© Commonwealth of Australia 2009

(130.0 x 180.6mm)