



Australian Notices to Mariners are the authority for correcting Australian Charts and Publications

---

# AUSTRALIAN NOTICES TO MARINERS

## Notices 984 - 1041

Published fortnightly by the Australian Hydrographic Service

Commodore R. NAIRN RAN  
*Hydrographer of Australia*

- 
- SECTIONS.**
- I. **Australian Notices to Mariners, including blocks and notes.**
  - II. **Hydrographic Reports.**
  - III. **Navigational Warnings.**

For Notices affecting Admiralty List of Lights and Fog Signals; List of Radio Signals; and Sailing Directions see **British Notices to Mariners.**

---

*The substance of these notices should be inserted on the charts affected.*

*Bearings are referred to the true compass and are reckoned clockwise from North; those relating to lights are given as seen by an observer from seaward. Positions quoted in permanent notices relate to the horizontal datum for the chart(s). When preliminary or temporary notices affect multiple charts, positions will be provided in relation to only one horizontal datum and that datum will be specified. When the multiple charts do not have a common horizontal datum, mariners will be required to adjust the position(s) for those charts not on the specified datum. The range quoted for a light is its nominal range. Depths are with reference to the chart datum of each chart. Heights are above mean high water springs or mean higher high water, as appropriate.*

*The capital letter (P) or (T) after the number of any notice denotes a preliminary or temporary notice respectively, which are contained separately at the end of the permanent notices. A star (\*) adjacent to the number of a notice indicates that the notice is based on original information.*

---

**Mariners are particularly requested to notify the AUSTRALIAN HYDROGRAPHIC SERVICE, Locked Bag 8801 Wollongong, NSW 2500 (Fax 02-4223 6599, e-mail [Hydro.NTM@defence.gov.au](mailto:Hydro.NTM@defence.gov.au) or, alternatively by filling in and submitting the [Hydrographic Notes](#) forms located on the web site – [www.hydro.gov.au](http://www.hydro.gov.au)), immediately on the discovery of new dangers or suspected dangers to navigation. For changes or defects in aids to navigation notify AusSAR (Fax 02-6230 6868 or email [rccaus@amsa.gov.au](mailto:rccaus@amsa.gov.au)).**

---

Copies of Australian notices are available free of charge from the Australian Hydrographic Service (AHS) website ([www.hydro.gov.au](http://www.hydro.gov.au)) and through the eNotices (email) service ([www.hydro.gov.au/enotices/enotices.htm](http://www.hydro.gov.au/enotices/enotices.htm)).

Individual Notices may be copied for the purpose of inserting Notice substance on official charts and publications. Paper copies may be printed by chart agents and distributed to customers on a cost recovery basis. Participating chart agents are listed on the AHS website as providing a 'Paper Notices to Mariners' service ([www.hydro.gov.au/prodserv/distributors/distributors.htm](http://www.hydro.gov.au/prodserv/distributors/distributors.htm)). Copies of the notices may not be sold for profit without prior written agreement.

---

### IMPORTANT NOTICE

This edition of Notices to Mariners includes all significant information affecting AHS products which the AHS has become aware of since the last edition. All reasonable efforts have been made to ensure the accuracy and completeness of the information, including third party information, on which these updates are based. The AHS regards third parties from which it receives information as reliable, however the AHS cannot verify all such information and errors may therefore exist. The AHS does not accept liability for errors in third party information.

---

© Commonwealth of Australia 2009

This work is copyright. Apart from any use permitted under the Copyright Act 1968, no part may be reproduced by any process, adapted, communicated or commercially exploited without prior written permission from The Commonwealth represented by the Australian Hydrographic Service.

## NUMERICAL INDEX OF NOTICES TO MARINERS

### Edition No 17

Notices	Aus Chart, INT Chart, ENC Cell
984.....	Aus 56, 81, 126, 345, 780, 781, AX 0110E, 0118E, 0334E, 0343E, 0754E, 0755E, 0808E, 0809E, AU310144, 310145, 311142, 311144, 311145, 334130, 334131, 334132, 408143, 409143, 409145, 429154, 432130, 432131, 433133, 433134, 434134, 434135, 436138, 436139, 438139, 438140, 499142, 5XXX52, 5XXX54
985.....	Aus 221, 424, 812
986.....	Aus 240, 365
987.....	Aus 244, 245
988.....	Aus 247, 819, 820, AX 0820E
989.....	Aus 822, AX 0822E
990.....	Aus 292, 839
991.....	Aus 4604, 4621, INT 604, 621, AX 4604F, 4621F
992.....	Aus 523, 644, 4620, 4622, INT 620, 622, AX 4620F
993.....	Aus 546, 547
994.....	Aus 715
995.....	Aus 20, 722, AX 72722
996.....	Aus 26, 722, AX72026, 72722
997.....	Aus 309, 722, AX 0309F, 72722
998.....	Aus 313, 4721, 4722, INT 721, 722, AX 0313F, 4721F, 4722F
999.....	Aus 59
1000.....	Aus 64
1001.....	Aus 416
1002.....	Aus 121
1003.....	Aus 143, 144, 154, 155, 158
1004.....	Aus 143, 158
1005.....	Aus 4060, 4602, 4604, INT 60, 602, 604, AX 4604F
1006(T).....	Aus 193, 807, 808, AX 0808E, 60193, 70193, AU436150, 5XX193
1007(T).....	Aus 193, 807, 808, AX 0808E, 60193, 67192, 70193, AU436150, 5XX193
1008(T).....	Aus 198, 199, AU5198X9
1009(T).....	Aus 197, 200, 201, AX 63200, AU5X200E
1010(T).....	Aus 207, 208
1011(T).....	Aus 207, 208
1012(T).....	Aus 236, 237, 814, AU5237X8
1013(T).....	Aus 235
1014(T).....	Aus 242, 243, AU5XX242
1015(T).....	Aus 244, 245, 246
1016(T).....	Aus 246, 819, AU424151
1017(T).....	Aus 245, 819, AU5244X5
1018(T).....	Aus 244, 245, AU5244X5
1019(T).....	Aus 265, AU5247P1
1020(T).....	Aus 247, 265, 819, AU424150
1021(T).....	Aus 265, AU5247P1
1022(T).....	Aus 247, AU5247P2
1023(T).....	Aus 367, 822, AX 0367E, 0822E, AU423150
1024(T).....	Aus 256, 257, AU5XX257
1025(T).....	Aus 293, 299, AU5XX299
1026(T).....	Aus 58, 59
1027(T).....	Aus 57, 58, 59
1028(T).....	Aus 414, 415, 4603, 4708, INT 603, 708, AX 0415F, 4603F, 4708F, AU130090
1029(T).....	Aus 57, 58, 59, 327, 328, 741, 742, AU421115, 421116, 5XXX58
1030(T).....	Aus 114, 117, AX 70117, AU5111X4
1031(T).....	Aus 177
1032(P).....	Aus 143, 144, 158, AU439144
1033(T).....	Aus 143, 144, 158
1034(P).....	Aus 143, 155, AU438144
1035(T).....	Aus 154, 155, AU5XX154
1036(T).....	Aus 154, AU5XX154
1037(T).....	Aus 154, AU5XX154
1038(T).....	Aus 154, AU5XX154
1039(T).....	Aus 154
1040(T).....	Aus 143, AU439145
1041(T).....	Aus 357A, 422, 423

## NUMERICAL INDEX OF CHARTS AFFECTED

## Edition No 17

Aus Chart	Notices	Aus Chart	Notices
Aus 20.....	995	Aus 546 .....	993
Aus 26.....	996	Aus 547 .....	993
Aus 56.....	984	Aus 644 .....	992
Aus 57.....	1027(T), 1029(T)	Aus 715 .....	994
Aus 58.....	1026(T), 1027(T), 1029(T)	Aus 722 .....	995, 996, 997
Aus 59.....	999, 1026(T), 1027(T), 1029(T)	Aus 741 .....	1029(T)
Aus 64.....	1000	Aus 742 .....	1029(T)
Aus 81.....	984	Aus 780 .....	984
Aus 114.....	1030(T)	Aus 781 .....	984
Aus 117.....	1030(T)	Aus 807 .....	1006(T), 1007(T)
Aus 121.....	1002	Aus 808 .....	1006(T), 1007(T)
Aus 126.....	984	Aus 812 .....	985
Aus 143.....	1003, 1004, 1032(P), 1033(T), 1034(P), 1040(T)	Aus 814 .....	1012(T)
Aus 144.....	1003, 1032(P), 1033(T)	Aus 819 .....	988, 1016(T), 1017(T), 1020(T)
Aus 154.....	1003, 1035(T), 1036(T), 1037(T), 1038(T), 1039(T)	Aus 820 .....	988
Aus 155.....	1003, 1034(P), 1035(T)	Aus 822 .....	989, 1023(T)
Aus 158.....	1003, 1004, 1032(P), 1033(T)	Aus 839 .....	990
Aus 177.....	1031(T)	Aus 4060 .....	1005
Aus 193.....	1006(T), 1007(T)	Aus 4602 .....	1005
Aus 197.....	1009(T)	Aus 4603 .....	1028(T)
Aus 198.....	1008(T)	Aus 4604 .....	991, 1005
Aus 199.....	1008(T)	Aus 4620 .....	992
Aus 200.....	1009(T)	Aus 4621 .....	991
Aus 201.....	1009(T)	Aus 4622 .....	992
Aus 207.....	1010(T), 1011(T)	Aus 4708 .....	1028(T)
Aus 208.....	1010(T), 1011(T)	Aus 4721 .....	998
Aus 221.....	985	Aus 4722 .....	998
Aus 235.....	1013(T)	AX 0110E .....	984
Aus 236.....	1012(T)	AX 0118E .....	984
Aus 237.....	1012(T)	AX 0309F.....	997
Aus 240.....	986	AX 0313F.....	998
Aus 242.....	1014(T)	AX 0334E.....	984
Aus 243.....	1014(T)	AX 0343E.....	984
Aus 244.....	987, 1015(T), 1018(T)	AX 0367E .....	1023(T)
Aus 245.....	987, 1015(T), 1017(T), 1018(T)	AX 0415F.....	1028(T)
Aus 246.....	1015(T), 1016(T)	AX 0754E .....	984
Aus 247.....	988, 1020(T), 1022(T)	AX 0755E .....	984
Aus 256.....	1024(T)	AX 0808E .....	984, 1006(T), 1007(T)
Aus 257.....	1024(T)	AX 0809E .....	984
Aus 265.....	1019(T), 1020(T), 1021(T)	AX 0820E .....	988
Aus 292.....	990	AX 0822E .....	989, 1023(T)
Aus 293.....	1025(T)	AX 4603F.....	1028(T)
Aus 299.....	1025(T)	AX 4604F.....	991, 1005
Aus 309.....	997	AX 4620F.....	992
Aus 313.....	998	AX 4621F.....	991
Aus 327.....	1029(T)	AX 4708F.....	1028(T)
Aus 328.....	1029(T)	AX 4721F.....	998
Aus 357A .....	1041(T)	AX 4722F.....	998
Aus 365.....	986	AX 60193.....	1006(T), 1007(T)
Aus 367.....	1023(T)	AX 63200.....	1009(T)
Aus 414.....	1028(T)	AX 67192.....	1007(T)
Aus 415.....	1028(T)	AX 70117.....	1030(T)
Aus 416.....	1001	AX 70193.....	1006(T), 1007(T)
Aus 422.....	1041(T)	AX 72026.....	996
Aus 423.....	1041(T)	AX 72722.....	995, 996, 997
Aus 424.....	985		
Aus 523.....	992		

INT Chart	Notices
INT 60 .....	1005
INT 602 .....	1005
INT 603 .....	1028(T)
INT 604 .....	991, 1005
INT 620 .....	992
INT 621 .....	991
INT 622 .....	992
INT 708 .....	1028(T)
INT 721 .....	998
INT 722 .....	998
ENC Cell	Notices
AU130090 .....	1028(T)
AU310144 .....	984
AU310145 .....	984
AU311142 .....	984
AU311144 .....	984
AU311145 .....	984
AU334130 .....	984
AU334131 .....	984
AU334132 .....	984
AU408143 .....	984
AU409143 .....	984
AU409145 .....	984
AU421115 .....	1029(T)
AU421116 .....	1029(T)
AU423150 .....	1023(T)
AU424150 .....	1020(T)
AU424151 .....	1016(T)
AU429154 .....	984
AU432130 .....	984
AU432131 .....	984
AU433133 .....	984
AU433134 .....	984
AU434134 .....	984
AU434135 .....	984
AU436138 .....	984
AU436139 .....	984
AU436150 .....	1006(T), 1007(T)
AU438139 .....	984
AU438140 .....	984
AU438144 .....	1034(P)
AU439144 .....	1032(P)
AU439145 .....	1040(T)
AU499142 .....	984
AU5XXX52 .....	984
AU5XXX54 .....	984
AU5XXX58 .....	1029(T)
AU5111X4 .....	1030(T)
AU5XX154 .....	1035(T), 1036(T), 1037(T), 1038(T)
AU5XX193 .....	1006(T), 1007(T)
AU5198X9 .....	1008(T)
AU5X200E .....	1009(T)
AU5237X8 .....	1012(T)
AU5XX242 .....	1014(T)
AU5244X5 .....	1017(T), 1018(T)
AU5247P1 .....	1019(T), 1021(T)
AU5247P2 .....	1022(T)
AU5XX257 .....	1024(T)
AU5XX299 .....	1025(T)

**984 AUSTRALIA - Product**

Australian Hydrographic Service (AA416973, AA423986, AA424475, AA425276, AA425278)

**New Edition**

Chart	Published	Title and description of amendments	Scale	Index Chart	Price
Aus 56	17/7/2009	Australia - North West Coast - Western Australia - Port Walcott <i>New edition incorporating extension to main wharf, tug harbour, dredged channel altered and new nav aids.</i>	1:12 500	Aus 5000	\$35.00
Aus 81	17/7/2009	Australia - West Coast - Western Australia - Approaches to Geraldton Plan: Port of Geraldton <i>New edition incorporating harbour works, new nav aids, prohibited fishing areas and amended HWL.</i>	1:25 000  1:7 500	Aus 5001	\$35.00

**New Electronic Navigation Chart (Seafarer ENC)**

Cell Name	Released	Title
AU310144	August 2009	Coral Sea - Cell 1 - Eastern Approaches to Great North East Channel
AU310145	August 2009	Coral Sea - Cell 2
AU311142	August 2009	Torres Strait - Tern Islet to Larpent Bank
AU311144	August 2009	Coral Sea - Ashmore Reef
AU311145	August 2009	Coral Sea - Cell 3
AU334130	August 2009	South Australia - Great Australian Bight - Cell 3
AU334131	August 2009	South Australia - Great Australian Bight - Cell 5
AU334132	August 2009	South Australia - Great Australian Bight - Cell 6
AU408143	August 2009	Gulf of Papua - Turama River
AU409143	August 2009	Gulf of Papua - Fly River Delta
AU409145	August 2009	Gulf of Papua - Cell 2
AU429154	August 2009	Coral Sea - Cell 1
AU432130	August 2009	South Australia - Great Australian Bight - Cell 1
AU432131	August 2009	South Australia - Head of Great Australian Bight to D'Entrecasteaux
AU433133	August 2009	South Australia - Nuyts Archipelago
AU433134	August 2009	South Australia - Streaky Bay
AU434134	August 2009	South Australia - Cape Blanche to Investigator Group
AU434135	August 2009	South Australia - Cap Island
AU436138	August 2009	South Australia - Backstairs Passage to Encounter Bay
AU436139	August 2009	South Australia - The Coorong
AU438139	August 2009	South Australia - Cape Dombey to Cape Martin
AU438140	August 2009	South Australia - Rivoli Bay to Cape Banks
AU5XXX52	August 2009	Western Australia- Entrance Channel to Port Hedland

**New Miscellaneous Chart**

Chart	Published	Title	Scale	Remarks
AX 0110E	28/8/2009	Australia - South Coast - Western Australia - King George Sound	1:25 000	Fleet use only.
AX 0118E	28/8/2009	Australia - South Coast - Western Australia - Approaches to King George Sound	1:75 000	Fleet use only.

**New Miscellaneous Edition**

Chart	Published	Title	Scale	Remarks
AX 0334E	28/8/2009	Australia - West Coast - Western Australia - Ledge Point to Cape Naturaliste	1:300 000	Fleet use only.
AX 0343E	28/8/2009	Australia - South Coast - South Australia - Whidbey Isles to Cape Du Couedic	1:300 000	Fleet use only.
AX 0754E	28/8/2009	Australia - West Coast - Western Australia - Lancelin to Cape Peron	1:150 000	Fleet use only.
AX 0755E	28/8/2009	Australia - West Coast - Western Australia - Cape Peron to Cape Naturaliste	1:150 000	Fleet use only.
AX 0808E	28/8/2009	Australia - East Coast - New South Wales - Jervis Bay to Port Jackson	1:150 000	Fleet use only.
AX 0809E	28/8/2009	Australia - East Coast - New South Wales - Port Jackson to Port Stephens	1:150 000	Fleet use only.

**Chart permanently withdrawn**

Chart *On publication of new edition*  
 Aus 56 Aus 56  
 Aus 81 Aus 81

**Chart to be permanently withdrawn without replacement**

Chart *On publication of new chart/edition*  
 Aus 345 Aus 126, 780, 781

Note: advice that chart Aus 780 was to be withdrawn without replacement on publication of Aus 781 was issued in error.

**Electronic Navigation Chart (Seafarer ENC) permanently withdrawn**

Cell *On release of new cell*  
 AU499142 AU311142  
 AU5XXX54 AU5XXX52

For further details refer to the AHS website at [www.hydro.gov.au](http://www.hydro.gov.au) for new edition and new chart stock arrival information.

When placing orders with a chart agent, mariners should advise whether their order pertains to the current edition or the new edition.

**985\* AUSTRALIA - NEW SOUTH WALES - South Solitary Island - Light altered**

Australian Maritime Safety Authority ATH 24/2009 (AA423249)

**Aus 221 [691/2009]**

Amend	light range to 17M	30° 12'.40 S	153° 16'.04 E
-------	--------------------	--------------	---------------

**Aus 424 [805/2009]**

Amend	light range to 17M	30° 12'.6 S	153° 16'.0 E
-------	--------------------	-------------	--------------

**Aus 812 [810/2009]**

Amend	light range to 17M	30° 12'.4 S	153° 16'.0 E
-------	--------------------	-------------	--------------

**986\* AUSTRALIA - QUEENSLAND - Wide Bay - Wreck**

Maritime Safety Queensland Notice 554/2009 (AA423950)

**Aus 240 [936/2009]**

Insert	depth, 25m, enclosed by danger circle with legend, Wk	25° 52'.13 S	153° 08'.27 E
--------	---	--------------	---------------

Delete	safe clearance depth, 15m, and enclosing danger circle with legend	25° 52'.3 S	153° 08'.3 E
--------	--	-------------	--------------

**Aus 365 [936/2009]**

Insert	depth, 13fm, enclosed by danger circle with legend, Wk	25° 52'.23 S	153° 08'.21 E
--------	--	--------------	---------------

Delete	safe clearance depth, 8,1fm, and enclosing danger circle with legend	25° 52'.4 S	153° 08'.2 E
--------	--	-------------	--------------

**987\* AUSTRALIA - QUEENSLAND - Gladstone - Clinton Bypass Channel - Light beacon repositioned**  
Gladstone Pilots, Maritime Safety Queensland (AA424010)

**Aus 244 (plan, Gladstone and Adjacent Wharves) [937/2009]**

Move	light beacon to	23° 49'.53 S 23° 49'.490 S	151° 15'.92 E 151° 15'.840 E
Delete	depth, 6 <sub>4</sub> m dashed line, between	23° 49'.48 S 23° 49'.53 S 23° 49'.49 S	151° 15'.82 E 151° 15'.92 E 151° 15'.84 E

**Aus 245 [937/2009]**

Move	light beacon to	23° 49'.53 S 23° 49'.490 S	151° 15'.92 E 151° 15'.840 E
Delete	dashed line, between	23° 49'.53 S 23° 49'.49 S	151° 15'.92 E 151° 15'.84 E

**988\* AUSTRALIA - QUEENSLAND - Keppel Bay - Wreck**  
Australian Hydrographic Service (AA423527)

**Aus 247 [NC 31/7/2009]**

Delete	non dangerous wreck	23° 09'.6 S	151° 15'.4 E
--------	---------------------	-------------	--------------

**Aus 819 [695/2009]**

Delete	non dangerous wreck	23° 09'.6 S	151° 15'.4 E
--------	---------------------	-------------	--------------

**Aus 820 [695/2009]**

Delete	non dangerous wreck	23° 09'.6 S	151° 15'.4 E
--------	---------------------	-------------	--------------

**AX 0820E [NE 19/6/2009]**

Delete	non dangerous wreck	23° 09'.6 S	151° 15'.4 E
--------	---------------------	-------------	--------------

**989\* AUSTRALIA - QUEENSLAND - Broad Sound - Depth**  
Australian Hydrographic Service (AA423526)

**Aus 822 [938/2009]**

Insert	upright sounding, 11 <sub>5</sub> m	22° 09'.30 S	149° 44'.63 E
Delete	depth, 1 <sub>5</sub> m	22° 08'.9 S	149° 44'.5 E

**AX 0822E [938/2009]**

Insert	upright sounding, 11 <sub>5</sub> m	22° 09'.30 S	149° 44'.63 E
Delete	depth, 1 <sub>5</sub> m	22° 08'.9 S	149° 44'.5 E

**990\* AUSTRALIA - QUEENSLAND - Cape York - Wreck**  
HMAS *Leeuwin* (AA423478, AA412828, AA412829)

**Aus 292 [647/2009]**

Insert	legend, PA	10° 39'.00 S	142° 30'.35 E
--------	------------	--------------	---------------

**Aus 839 [647/2009]**

Insert	legend, PA	10° 38'.95 S	142° 30'.15 E
--------	------------	--------------	---------------

**991\* PAPUA NEW GUINEA - Solomon Sea - Depths**  
Geoscience Australia (AA423979)

**Aus 4604 (INT 604) [944/2009]**

Insert	depth, 2102m, and extend contour N to enclose	10° 36'.2 S	154° 54'.9 E
Substitute	depth, 2184m, for depth, 2426m	10° 13'.0 S	155° 26'.0 E

**Aus 4621 (INT 621) [755/2009]**

Insert	depth, 2597m, enclosed by contour	10° 18'.7 S	154° 51'.4 E
	depth, 2635m, and extend contour E to enclose	10° 28'.1 S	154° 47'.6 E
	depth, 2102m	10° 36'.2 S	154° 54'.9 E
Substitute	depth, 2184m, for depth, 2426m	10° 13'.0 S	155° 26'.0 E
Delete	depth, 3095m	10° 18'.0 S	154° 50'.0 E
	depth, 2917m	10° 29'.0 S	154° 45'.0 E

**AX 4604F [944/2009]**

Insert	depth, 2102m, and extend contour N to enclose	10° 36'.2 S	154° 54'.9 E
Substitute	depth, 2184m, for depth, 2426m	10° 13'.0 S	155° 26'.0 E

**AX 4621F [755/2009]**

Insert	depth, 2597m, enclosed by contour	10° 18'.7 S	154° 51'.4 E
	depth, 2635m, and extend contour E to enclose	10° 28'.1 S	154° 47'.6 E
	depth, 2102m	10° 36'.2 S	154° 54'.9 E
Substitute	depth, 2184m, for depth, 2426m	10° 13'.0 S	155° 26'.0 E
Delete	depth, 3095m	10° 18'.0 S	154° 50'.0 E
	depth, 2917m	10° 29'.0 S	154° 45'.0 E

**992\* PAPUA NEW GUINEA - Salamaua Peninsula - Light altered**  
National Maritime Safety Authority PNG (AA422996)

**Aus 523 [942/2009]**

Amend	light range to 10M	7° 00'.8 S	147° 04'.2 E
-------	--------------------	------------	--------------

**Aus 644 (plan, Salamaua Harbour) [639/2007]**

Amend	light range to 10M	7° 00'.8 S	147° 04'.2 E
-------	--------------------	------------	--------------

**Aus 4620 (INT 620) [942/2009]**

Amend	light range to 10M	7° 00'.8 S	147° 04'.2 E
-------	--------------------	------------	--------------

**Aus 4622 (INT 622) [944/2009]**

Amend	light range to 10M	7° 00'.8 S	147° 04'.2 E
-------	--------------------	------------	--------------

**AX 4620F [942/2009]**

Amend	light range to 10M	7° 00'.8 S	147° 04'.2 E
-------	--------------------	------------	--------------

**993\* PAPUA NEW GUINEA - Banban Reefs - Depths**  
HMAS *Paluma* (DHDB 596633)

**Aus 546 [759/2009]**

Insert	accompanying block	4° 54'.0 S	151° 00'.0 E
--------	--------------------	------------	--------------

**Aus 547 [47/2009]**

Insert	accompanying block	4° 54'.0 S	150° 57'.5 E
--------	--------------------	------------	--------------

**994\* AUSTRALIA - NORTHERN TERRITORY - Burston Bay - Depths**  
 Australian Customs Service (DHDB 1289229)

**Aus 715 [760/2009]**

Insert	accompanying block	11° 13'.5 S	136° 41'.5 E
--------	--------------------	-------------	--------------

**995\* AUSTRALIA - NORTHERN TERRITORY - Clarence Strait - Glyde Point - Light buoy altered**  
 Northern Territory Government, Workboats Northern Australia (AA423517)

**Aus 20 [484/2009]**

Substitute	starboard lateral spar light buoy, <i>LFl.G.6s</i> , for light buoy	12° 09'.9 S	131° 07'.3 E
------------	---	-------------	--------------

**Aus 722 [761/2009]**

Substitute	starboard lateral spar light buoy, <i>LFl.G.6s</i> , for light buoy	12° 09'.9 S	131° 07'.4 E
------------	---	-------------	--------------

**AX 72722 [761/2009]**

Substitute	starboard lateral spar light buoy, <i>LFl.G.6s</i> , for light buoy	12° 09'.9 S	131° 07'.4 E
------------	---	-------------	--------------

**996\* AUSTRALIA - NORTHERN TERRITORY - Shoal Bay - Light beacons established**  
 Northern Territory Government, Workboats Northern Australia (AA423512, AA423849)

**Aus 26 [867/2009]**

Insert	light beacon, <i>Fl.5s</i> , without topmark	12° 20'.36 S	130° 55'.70 E
	light beacon, <i>Fl.5s</i> , without topmark	12° 20'.53 S	130° 55'.65 E

**Aus 722 [995/2009]**

Insert	light beacon, <i>Fl.5s</i> , without topmark	12° 20'.36 S	130° 55'.70 E
--------	--	--------------	---------------

**AX 72026 [867/2009]**

Insert	light beacon, <i>Fl.5s</i> , without topmark	12° 20'.36 S	130° 55'.70 E
	light beacon, <i>Fl.5s</i> , without topmark	12° 20'.53 S	130° 55'.65 E

**AX 72722 [995/2009]**

Insert	light beacon, <i>Fl.5s</i> , without topmark	12° 20'.36 S	130° 55'.70 E
--------	--	--------------	---------------

**997\* AUSTRALIA - NORTHERN TERRITORY - Beagle Gulf - Wreck**  
 HMAS *Leeuwin* (DHDB 1304775)

<b>Aus 309</b> [543/2009]		
Insert	depth, 41m, enclosed by danger circle	12° 07'.04 S 130° 06'.49 E
Delete	historic wreck symbol	12° 07'.0 S 130° 06'.5 E
<b>Aus 722</b> [996/2009]		
Insert	depth, 41m, enclosed by danger circle	12° 07'.04 S 130° 06'.49 E
Delete	historic wreck symbol	12° 07'.0 S 130° 06'.5 E
<b>AX 0309F</b> [543/2009]		
Insert	depth, 41m, enclosed by danger circle	12° 07'.04 S 130° 06'.49 E
Delete	historic wreck symbol	12° 07'.0 S 130° 06'.5 E
<b>AX 72722</b> [996/2009]		
Insert	depth, 41m, enclosed by danger circle	12° 07'.04 S 130° 06'.49 E
Delete	historic wreck symbol	12° 07'.0 S 130° 06'.5 E

**998 INDONESIA - Pulau Liran - Light altered**  
 BA Notice 33/4229/2009 (AA423213)

<b>Aus 313</b> [947/2009]		
Amend	light to <i>Fl.3s 40m 17M</i>	8° 03'.0 S 125° 44'.0 E
<b>Aus 4721 (INT 721)</b> [868/2009]		
Amend	light to <i>Fl. 17M</i>	8° 03'.0 S 125° 44'.0 E
<b>Aus 4722 (INT 722)</b> [648/2009]		
Amend	light to <i>Fl. 17M</i>	8° 03'.0 S 125° 44'.0 E
<b>AX 0313F</b> [947/2009]		
Amend	light to <i>Fl.3s 40m 17M</i>	8° 03'.0 S 125° 44'.0 E
<b>AX 4721F</b> [868/2009]		
Amend	light to <i>Fl. 17M</i>	8° 03'.0 S 125° 44'.0 E
<b>AX 4722F</b> [648/2009]		
Amend	light to <i>Fl. 17M</i>	8° 03'.0 S 125° 44'.0 E

**999\* AUSTRALIA - WESTERN AUSTRALIA - Dampier - King Bay - Lights**  
 Dampier Port Authority Notice 23/2009 (AA423770)

<b>Aus 59 (plan, Withnell Bay to King Bay)</b> [545/2009]		
Insert	light, Q.G	20° 37'.613 S 116° 44'.877 E
Delete	light	20° 37'.93 S 116° 44'.89 E

**1000\* AUSTRALIA - WESTERN AUSTRALIA - Onslow - Beadon Creek - Depths**  
 Department of Transport WA (DHDB 1308765)

<b>Aus 64 (plan, Onslow)</b> [251/2009]		
Insert	accompanying block	21° 38'.6 S 115° 07'.9 E

**1001\* AUSTRALIA - WESTERN AUSTRALIA - Houtman Abrolhos - Cables westwards**

Australian Hydrographic Service (AA423505)

**Aus 416 [829/2009]**

Insert	submarine cable, between	29° 10'.3 S	110° 53'.5 E
		29° 00'.0 S	110° 43'.1 E
		28° 52'.6 S	110° 36'.4 E
		28° 43'.1 S	110° 25'.2 E
		28° 10'.2 S	110° 04'.3 E
	disused submarine cable, between	27° 51'.7 S	109° 44'.0 E
		29° 10'.3 S	110° 51'.0 E
		28° 25'.1 S	110° 04'.3 E
		28° 04'.1 S	109° 44'.0 E
		29° 10'.3 S	111° 52'.1 E
	disused submarine cable, between	28° 00'.2 S	111° 01'.6 E
		26° 05'.3 S	109° 44'.0 E

**1002\* AUSTRALIA - SOUTH AUSTRALIA - Coffin Bay - Light altered**

Department for Transport, Energy and Infrastructure SA (AA423997)

**Aus 121 (plan, Coffin Bay) [1186/2008]**

Amend	light to <i>Fl.R.5s</i>	34° 36'.6 S	135° 24'.1 E
	<i>Note:</i> certain copies of Aus 121 show the light as <i>Fl.R.5s</i> .		
Delete	sectors emanating from light	34° 36'.6 S	135° 24'.1 E

**1003\* AUSTRALIA - VICTORIA - Port Phillip - Maintained depths**

Victorian Notice 10/2009, 115/2009 (AA424144, AA424138)

**Aus 143 [769/2009]**

Amend	legend to <i>Maintained depth 13.6m</i>	38° 17'.9 S	144° 42'.7 E
	legend to <i>Maintained depth 13.6m</i>	38° 19'.9 S	144° 53'.6 E
Substitute	depth, 13 <sub>5</sub> m, for depth, 13 <sub>9</sub> m	38° 17'.4 S	144° 41'.0 E

**Aus 144 [769/2009]**

Insert	dashed line, between	38° 17'.200 S	144° 40'.520 E
		38° 17'.340 S	144° 41'.275 E
		38° 17'.731 S	144° 42'.502 E
		38° 17'.368 S	144° 40'.728 E
		38° 17'.200 S	144° 40'.520 E
	legend, <i>Maintained depth 13.1m</i> , centred on	38° 17'.43 S	144° 41'.30 E
Amend	legend to <i>Maintained depth 13.6m</i>	38° 17'.89 S	144° 42'.58 E
	legend to <i>GREAT SHIP CHANNEL 14.5m</i>	38° 18'.03 S	144° 37'.63 E
Substitute	depth, 13 <sub>5</sub> m, for depth, 13 <sub>9</sub> m	38° 17'.42 S	144° 40'.97 E
Delete	depth, 15 <sub>6</sub> m	38° 17'.22 S	144° 40'.51 E
	depth, 16 <sub>4</sub> m	38° 17'.38 S	144° 40'.78 E
	depth, 16 <sub>7</sub> m	38° 17'.44 S	144° 41'.23 E
	contour, between	38° 17'.21 S	144° 40'.64 E
		38° 17'.40 S	144° 40'.56 E
		38° 17'.41 S	144° 40'.93 E
	contour, between	38° 17'.39 S	144° 41'.01 E
		38° 17'.33 S	144° 41'.07 E
		38° 17'.37 S	144° 41'.34 E

**1003\* AUSTRALIA - VICTORIA - Port Phillip - Maintained depths (continued)****Aus 154 [953/2009]**

Insert	dashed line, between	37° 52'.318 S	144° 55'.545 E
		37° 52'.102 S	144° 55'.552 E
	legend, <i>Maintained depth 13.6m</i> , centred on dashed line, between	37° 52'.50 S	144° 55'.72 E
		37° 49'.098 S	144° 54'.733 E
		37° 49'.071 S	144° 54'.881 E
Amend	legend to <i>Maintained depth 13.3m</i>	37° 52'.02 S	144° 55'.37 E
	legend to <i>Maintained depth 13.3m</i>	37° 51'.05 S	144° 54'.44 E
	legend to <i>Maintained depth 13.3m</i>	37° 49'.26 S	144° 54'.58 E

**Aus 155 [882/2009]**

Insert	dashed line, between	37° 52'.318 S	144° 55'.545 E
		37° 52'.102 S	144° 55'.552 E
	dashed line, between	37° 52'.102 S	144° 55'.552 E
		37° 52'.335 S	144° 55'.763 E
Amend	legend to <i>Maintained depth 13.6 metres</i>	37° 54'.08 S	144° 55'.67 E

**Aus 158 [769/2009]**

Insert	dashed line, between	38° 17'.200 S	144° 40'.520 E
		38° 17'.341 S	144° 41'.275 E
		38° 17'.730 S	144° 42'.502 E
		38° 17'.368 S	144° 40'.728 E
		38° 17'.200 S	144° 40'.520 E
	legend, <i>13.1m</i> , centred on	38° 17'.47 S	144° 41'.45 E
Amend	legend to <i>Maintained depth 13.6m</i>	38° 18'.06 S	144° 43'.17 E
	legend to <i>Maintained depth 13.6m</i>	38° 19'.91 S	144° 52'.55 E
	legend to <i>14.5m</i>	38° 18'.18 S	144° 37'.50 E
Substitute	depth, <i>13<sub>5</sub>m</i> , for depth, <i>13<sub>9</sub>m</i>	38° 17'.42 S	144° 40'.97 E
Delete	depth, <i>15<sub>6</sub>m</i>	38° 17'.22 S	144° 40'.51 E
		38° 17'.44 S	144° 41'.23 E
	depth, <i>16<sub>7</sub>m</i>	38° 17'.21 S	144° 40'.64 E
		38° 17'.40 S	144° 40'.56 E
	contour, between	38° 17'.41 S	144° 40'.93 E
		38° 17'.39 S	144° 41'.01 E
		38° 17'.33 S	144° 41'.07 E
		38° 17'.37 S	144° 41'.34 E

**1004\* AUSTRALIA - VICTORIA - Port Phillip - Balcombe Bay - Spoil ground**

Victorian Notice 23/2008 (AA422448)

**Aus 143 [1003/2009]**

Insert	dashed line with legend <i>Spoil Ground</i> , between	38° 15'.92 S	144° 56'.75 E
		38° 13'.91 S	144° 56'.76 E
		38° 13'.92 S	144° 58'.55 E
		38° 15'.92 S	144° 57'.80 E
		38° 15'.92 S	144° 56'.75 E

**Aus 158 [1003/2009]**

Insert	dashed line with legend <i>Spoil Ground</i> , between	38° 15'.916 S	144° 56'.745 E
		38° 13'.914 S	144° 56'.762 E
		38° 13'.923 S	144° 58'.546 E
		38° 15'.921 S	144° 57'.804 E
		38° 15'.916 S	144° 56'.745 E

**1005\* PACIFIC OCEAN - FIJI - North Fiji Plateau - Depths**  
 Geoscience Australia (AA423979)

**Aus 4060 (INT 60) [256/2009]**

Insert	depth, <i>928m</i> , enclosed by contour	18° 26'.8 S	176° 42'.0 E
--------	--	-------------	--------------

**Aus 4602 (INT 602) [256/2009]**

Insert	depth, <i>1850m</i> , enclosed by contour	17° 14'.5 S	172° 22'.7 E
	depth, <i>928m</i> , enclosed by contour	18° 26'.8 S	176° 42'.0 E

**Aus 4604 (INT 604) [991/2009]**

Insert	depth, <i>1850m</i> , enclosed by contour	17° 14'.5 S	172° 22'.7 E
	depth, <i>928m</i> , enclosed by contour	18° 26'.8 S	176° 42'.0 E

**AX 4604F [991/2009]**

Insert	depth, <i>1850m</i> , enclosed by contour	17° 14'.5 S	172° 22'.7 E
	depth, <i>928m</i> , enclosed by contour	18° 26'.8 S	176° 42'.0 E

**1006(T)/2009 AUSTRALIA - NEW SOUTH WALES - Jervis Bay - Scientific instrument***Date* - Until 10 September 2009

Australian Hydrographic Service (AA420597, AA424413, AA424691)

A subsurface scientific instrument exists in position 35° 05'.0 S 150° 45.0 E.

**Chart temporarily affected - Aus 193 - Aus 807 - Aus 808 – AX 0808E – AX 60193 – AX 70193 - AU436150 - AU5XX193****1007(T)/2009 AUSTRALIA - NEW SOUTH WALES - Jervis Bay - Military exercise***Date* - Until 19 September 2009

Department of Defence (AA425230)

An exercise mine exists in position 35° 06'.12 S 150° 43'.39 E, suspended 10m below the surface.

Mariners are advised to navigate with caution in the area.

**Chart temporarily affected - Aus 193 - Aus 807 - Aus 808 – AX 0808E – AX 60193 – AX 67192 – AX 70193 - AU436150 - AU5XX193****1008(T)/2009 AUSTRALIA - NEW SOUTH WALES - Botany Bay - Scientific instrument***Former Notice* - 954(T)/2009 is cancelled

Cardno Lawson Treloar (AA423756)

A special light buoy, *Fl(5)Y.20s*, exists in position 33° 59'.87 S 151° 12'.21 E.**Chart temporarily affected - Aus 198 - Aus 199 - AU5198X9****1009(T)/2009 AUSTRALIA - NEW SOUTH WALES - Manly - Scientific instruments***Date* - Until 28 February 2011

University of Sydney Institute of Marine Science (AA353372, AA353373, AA424523)

Subsurface scientific instruments exist in positions (WGS84 datum):

33° 48'.03 S 151° 18'.03 E

33° 47'.98 S 151° 17'.65 E

33° 47'.99 S 151° 17'.73 E

33° 47'.92 S 151° 17'.61 E

33° 47'.93 S 151° 17'.69 E

**Chart temporarily affected - Aus 197 - Aus 200 - Aus 201 – AX 63200 - AU5X200E****1010(T)/2009 AUSTRALIA - NEW SOUTH WALES - Newcastle - Hunter River - Obstructions removed***Former Notice* - 199(T)/2008 is cancelled

Newcastle Port Corporation (AA424604)

Cancel this notice on receipt.

**Chart formerly affected - Aus 207 - Aus 208****1011(T)/2009 AUSTRALIA - NEW SOUTH WALES - Newcastle - Hunter River - Harbour works completed***Former Notice* - 648(T)/2008 is cancelled

Newcastle Port Corporation (AA424604)

Cancel this notice on receipt.

**Chart formerly affected - Aus 207 - Aus 208**

**1012(T)/2009 AUSTRALIA - QUEENSLAND - Moreton Bay - Light beacon destroyed; light buoys established***Former Notice* - 712(T)/2008 is cancelled

Date - Until 7 September 2009

Maritime Safety Queensland Notice 385(T)/2008, 569(T)/2009 (AA345170, AA424568)

No 1 light beacon (27° 18'.59 S 153° 12'.48 E) has been destroyed; an isolated danger light buoy, *Fl(2)6s*, exists in situ.The barge *Maeve Anne* is on site to re-establish the light beacon and will display appropriate lights and shapes.A starboard lateral light buoy, *Fl.G.4s*, exists in position 27° 18'.58 S 153° 12'.48 E.**Chart temporarily affected - Aus 236 - Aus 237 - Aus 814 - AU5237X8****1013(T)/2009 AUSTRALIA - QUEENSLAND - Mooloolaba - Shoaling***Former Notice* - 958(T)/2009 is cancelled

Maritime Safety Queensland Notice 567(T)/2009 (AA424567)

Shoaling, with a least depth of 2.3m (LAT), exists within the entrance to Mooloolah River.

Lesser depths of 1.2m exist between 26° 40'.81 S 153° 07'.95 E and 26° 40'.86 S 153° 08'.01 E.

A shoal patch with a least depth of 2.4m exists in the vicinity of position 26° 40'.81 S 153° 07'.86 E.

Mariners are advised to navigate with caution in the area.

**Chart temporarily affected - Aus 235****1014(T)/2009 AUSTRALIA - QUEENSLAND - Bundaberg - Depth information***Former Notice* - 91(T)/2009 is cancelled

Maritime Safety Queensland Notice 576(T)/2009 (AA425142)

Available depths as at 24 August 2009:

	<i>Metres</i>
* Sea Reach	9.5
* Middle Reach	9.5
* Inner Reach	9.5
Swing Basin	8.0
* Oil Berth	9.3
* BST Berth	11.0

The deep draught departure channel from the BST berth to Inner Reach has a depth of 9.3m.

\* Indicates revised entry.

**Chart temporarily affected - Aus 242 - Aus 243 - AU5XX242**

**1015(T)/2009 AUSTRALIA - QUEENSLAND - Gladstone - Depth information***Former Notice - 654(T)/2007 is cancelled*

Maritime Safety Queensland Notice 560(T)/2009 (AA424095)

Available depths as at 18 August 2009:

	<i>Metres</i>
<b>Sea Channels:</b>	
Wild Cattle Cutting	16.1
Boyne Island Cutting	16.1
Boyne Island Extension Channel	9.0
Golding Cutting	16.1
South Bypass Channel	7.1
Gatcombe Channel	16.3
Gatcombe Bypass Channel	12.5
<b>Inner Channels:</b>	
Auckland Channel	15.8
Auckland Bypass Channel	6.8
Clinton Channel	16.0
Clinton Bypass Channel	10.6
Clinton Swing Basin	10.6
Targinie Channel	10.6
Targinie Swing Basin East	10.6
Targinie Swing Basin West	9.0
<b>Berths:</b>	
Boyne Smelter Wharf	15.0
South Trees East Wharf	12.8
South Trees West Wharf	12.8
Barney Point Wharf (east approach)	13.5
* Barney Point Wharf (west approach)	11.9
* Barney Point Wharf	15.0
Auckland Point No 1 Wharf	11.3
Auckland Point No 2 Wharf	11.3
Auckland Point No 3 Wharf	11.3
Auckland Point No 4 Wharf	11.4
Clinton No 1 Wharf	18.8
Clinton No 2 Wharf	18.8
Clinton No 3 Wharf	18.8
* Clinton No 4 Wharf	18.8
Fishermans Landing Wharf No 2	12.9
Fishermans Landing Wharf No 4	11.2
Fishermans Landing Wharf No 5	11.2

\* Indicates new or revised entry.

**Chart temporarily affected - Aus 244 - Aus 245 - Aus 246****1016(T)/2009 AUSTRALIA - QUEENSLAND - Gladstone - Scientific instrument***Former Notice - 897(T)/2009 is cancelled*

Maritime Safety Queensland Notice 520(T)/2009 (AA421784)

Cancel this notice on receipt.

**Chart formerly affected - Aus 246 - Aus 819 - AU424151****1017(T)/2009 AUSTRALIA - QUEENSLAND - The Narrows - Drilling operations completed***Former Notice - 843(T)/2009 is cancelled*

Maritime Safety Queensland Notice 563(T)/2009 (AA424358)

Cancel this notice on receipt.

**Chart formerly affected - Aus 245 - Aus 819 - AU5244X5**

**1018(T)/2009 AUSTRALIA - QUEENSLAND - South Passage Island to Friend Point - Scientific instruments***Date - Until 10 September 2009*

Maritime Safety Queensland Notice 577(T)/2009 (AA425141), URS Australia (AA425144)

Subsurface scientific instruments exist as follows:

23° 45'.10 S 151° 09'.67 E  
 23° 45'.12 S 151° 10'.54 E  
 23° 45'.55 S 151° 10'.47 E  
 23° 45'.80 S 151° 11'.13 E  
 23° 46'.20 S 151° 10'.86 E  
 23° 46'.95 S 151° 11'.42 E  
 23° 46'.91 S 151° 12'.04 E

**Chart temporarily affected - Aus 244 - Aus 245 - AU5244X5****1019(T)/2009 AUSTRALIA - QUEENSLAND - Port Alma - Depth information***Former Notice - 623(T)/2009 is cancelled*

Maritime Safety Queensland Notice 559(T)/2009

Available depths as at 18 August 2009:

<i>Berth</i>	<i>Metres</i>
Balacava Leads	7.6
Kazatch Leads	7.0
Eupatoria Leads	7.9
Shell Point Leads	7.0
Swing Basin	5.8
Berth No 1	9.2
Berth No 2	9.2
Berth No 3	9.2

\* Indicates revised entry.

**Chart temporarily affected - Aus 265 - AU5247P1****1020(T)/2009 AUSTRALIA - QUEENSLAND - Port Alma - Drilling operations***Date - Until 10 September 2009*

Maritime Safety Queensland Notice 550(T)/2009 (AA423975)

The vessel *PMG Pride* will be conducting drilling operations between 23° 25'.10 S 151° 00'.23 E and 23° 33'.46 S 150° 54'.14 E.

The vessel will monitor VHF Ch 13.

Mariners are advised to navigate with caution in the area.

**Chart temporarily affected - Aus 247 - Aus 265 - Aus 819 - AU424150****1021(T)/2009 AUSTRALIA - QUEENSLAND - Port Alma - Harbour works***Date - Until 18 September 2009*

Maritime Safety Queensland Notice 565(T)/2009 (AA424357)

Barges *Capricorn* and *Markwell Outpost* are conducting pile driving operations at No3 berth (23° 35'.14 S 150° 51'.74 E).

Vessels will monitor VHF Ch 13 and Ch 16.

Mariners are advised to navigate with caution in the area.

**Chart temporarily affected - Aus 265 - AU5247P1**

**1022(T)/2009 AUSTRALIA - QUEENSLAND - Rosslyn Bay - Dredging operations completed***Former Notice - 624(T)/2009 is cancelled*

Maritime Safety Queensland Notice 290(T)/2009 (AA405393)

Cancel this notice on receipt.

**Chart formerly affected - Aus 247 - AU5247P2****1023(T)/2009 AUSTRALIA - QUEENSLAND - Shoalwater Bay - Live firing completed***Former Notice - 963(T)/2009 is cancelled*

Maritime Safety Queensland Notice 547/2009 (AA423611)

Cancel this notice on receipt.

**Chart formerly affected - Aus 367 - Aus 822 – AX 0367E – AX 0822E - AU423150****1024(T)/2009 AUSTRALIA - QUEENSLAND - Townsville - Ross River - Dredging operations***Date - Until 15 December 2009*

Maritime Safety Queensland Notice 573(T)/2009 (AA424851)

The dredge *Elke-D* and support vessel are conducting dredging operations in the Ross River Channel (19° 15'.83 S 146° 50'.43 E).

The dredge will display appropriate lights and shapes and will monitor VHF Ch 12 and Ch 16.

Mariners are advised to navigate with caution in the area.

**Chart temporarily affected - Aus 256 - Aus 257 - AU5XX257****1025(T)/2009 AUSTRALIA - QUEENSLAND - Thursday Island - Depth information***Former Notice - 448(T)/2009 is cancelled*

Maritime Safety Queensland Notice 561(T)/2009 (AA424096)

Available depths as at 19 August 2009:

	<i>Metres</i>
* Hovell Bar	3.6
Main Wharf	3.1 (a sounding of 3.1m has been recorded approximately 60m south of Main Wharf. 4.1m alongside wharf)
Caltex Wharf	4.1
Engineers Wharf	3.5
Inner Harbour	4.6
Boat Channel	4.8

\* Indicates revised entry.

**Chart temporarily affected - Aus 293 - Aus 299 - AU5XX299****1026(T)/2009 AUSTRALIA - WESTERN AUSTRALIA - Dampier - King Bay - Harbour works completed***Former Notice - 678(T)/2009 is cancelled*

Dampier Port Authority Notice 19/2009 (AA424158)

Cancel this notice on receipt.

*Note:* charts will be updated on receipt of data.**Chart formerly affected - Aus 58 - Aus 59**

**1027(T)/2009 AUSTRALIA - WESTERN AUSTRALIA - Dampier - King Bay - Lights discontinued**

Former Notice - 1207(T)/2008 is cancelled  
Dampier Port Authority Notice 20/2009 (AA424159)

Cancel this notice on receipt.

**Chart formerly affected - Aus 57 - Aus 58 - Aus 59**

**1028(T)/2009 AUSTRALIA - WESTERN AUSTRALIA - Dampier Archipelago - Seismic survey northwards completed**

Former Notice - 973(T)/2009 is cancelled  
Searcher Seismic Pty Ltd (AA424822)

Cancel this notice on receipt.

**Chart formerly affected - Aus 414 - Aus 415 – Aus 4603 (INT 603) - Aus 4708 (INT 708) – AX 0415F – AX 4603F – AX 4708F - AU130090**

**1029(T)/2009 AUSTRALIA - WESTERN AUSTRALIA - Rankin Bank to Dampier - Scientific instruments**

Former Notice - 974(T)/2009 is cancelled  
Date - Until 31 December 2010  
MetOcean Engineers (AA424402)

Scientific instruments exist as follows:

<i>Position (WGS84 datum)</i>	<i>Remarks</i>
20° 01'.99 S 115° 25'.37 E	lit buoy, <i>Fl(5)Y.20s</i>
20° 02'.06 S 115° 25'.24 E	5 poly-floats
20° 05'.29 S 115° 37'.49 E	lit buoy, <i>Fl(5)Y.20s</i>
20° 05'.22 S 115° 37'.66 E	5 poly-floats
20° 08'.29 S 115° 51'.43 E	lit buoy, <i>Fl(5)Y.20s</i> , and 5 poly floats
20° 11'.58 S 116° 05'.26 E	lit buoy, <i>Fl(5)Y.20s</i>
20° 11'.50 S 116° 05'.37 E	5 poly-floats
20° 22'.31 S 116° 46'.57 E	lit buoy, <i>Fl(5)Y.20s</i>
20° 22'.35 S 116° 46'.47 E	5 poly-floats
20° 33'.90 S 116° 44'.03 E	5 poly-floats
20° 33'.91 S 116° 44'.06 E	lit buoy, <i>Fl(5)Y.20s</i>

**Chart temporarily affected - Aus 57 - Aus 58 - Aus 59 - Aus 327 - Aus 328 - Aus 741 - Aus 742 - AU421115 - AU421116 - AU5XXX58**

**1030(T)/2009 AUSTRALIA - WESTERN AUSTRALIA - Fremantle - Dredging operations**

Date - Until 15 December 2009  
Fremantle Ports Notice 9(T)/2009 (AA424524)

The dredge *Ballina* and support vessels are conducting dredging operations in the area bounded by the following positions:

32° 09'.83 S 115° 45'.81 E  
32° 09'.83 S 115° 46'.02 E  
32° 09'.95 S 115° 46'.02 E  
32° 09'.95 S 115° 45'.81 E.

All vessels will display appropriate lights.

Mariners are advised to navigate with caution in the area.

**Chart temporarily affected - Aus 114 - Aus 117 – AX 70117 - AU5111X4**

**1031(T)/2009 AUSTRALIA - TASMANIA - Macquarie Harbour - Lights relit**

Former Notice - 890(T)/2008 is cancelled  
Marine and Safety Tasmania (AA425264)

Cancel this notice on receipt.

**Chart formerly affected - Aus 177****1032(P)/2009 AUSTRALIA - VICTORIA - Port Phillip - South Channel - Light beacons to be established**

Former Notice - 399(T)/2009 is cancelled  
Date - On or about 31 August 2009  
Victorian Notice 112(T)/2009, 113(T)/2009 (AA423984, AA423983)

No 2 (38° 17'.72 S 144° 42'.49 E) and No 4 (38° 18'.00 S 144° 43'.83 E) light beacons have been withdrawn.

Port lateral light buoys exist as follows:

<i>Position</i>	<i>Remarks</i>
38° 17'.71 S 144° 42'.51 E	<i>Fl.R.3s</i>
38° 17'.98 S 144° 43'.84 E	<i>Fl(2)R.5s</i>

Light beacons will be established as follows:

<i>Position</i>	<i>Remarks</i>
38° 17'.71 S 144° 42'.51 E	<i>Fl.R.3s No2</i>
38° 17'.98 S 144° 43'.84 E	<i>Fl(2)R.5s No4</i>
38° 19'.50 S 144° 55'.48 E	<i>Fl(2)G.5s No21</i>

The barges *Jub 2* and *Taree* and support vessels *Taurus* and *Abyss* will be onsite.

Further information can be obtained by contacting the barge on VHF Ch 12, through Lonsdale VTS and on 0408 330 593.

Mariners are advised to navigate with caution in the area.

**Chart which will be affected - Aus 143 - Aus 144 - Aus 158 - AU439144****1033(T)/2009 AUSTRALIA - VICTORIA - Port Phillip - Dredging operations completed**

Former Notice - 510(T)/2008 is cancelled  
Port of Melbourne Corporation (AA424878)

Cancel this notice on receipt.

**Chart formerly affected - Aus 143 - Aus 144 - Aus 158**

**1034(P)/2009 AUSTRALIA - VICTORIA - Port Phillip - Anchor berths, light beacons to be established***Former Notice - 229(T)/2009 is cancelled**Date - On or about 1 September 2009*

Victorian Notice 100/2009, 114(T)/2009 (AA420322, AA423968, AA419624)

Anchor berths will be established in the following positions:

<i>Desig</i>	<i>Position</i>
A1	37° 53'.36 S 144° 54'.56 E
A2	37° 54'.25 S 144° 54'.50 E
A3	37° 55'.13 S 144° 54'.64 E
S1	37° 58'.16 S 144° 54'.43 E
S2	37° 57'.53 S 144° 53'.31 E
S3	37° 56'.88 S 144° 52'.25 E
S4	37° 56'.18 S 144° 50'.97 E
S5	37° 57'.22 S 144° 50'.69 E
S6	37° 58'.00 S 144° 52'.00 E
S7	37° 58'.20 S 144° 50'.00 E
S8	37° 59'.50 S 144° 50'.50 E
S9	37° 59'.87 S 144° 48'.60 E
S10	38° 01'.26 S 144° 49'.19 E
S11	38° 01'.58 S 144° 47'.32 E
S12	38° 03'.00 S 144° 46'.24 E
S13	38° 03'.00 S 144° 48'.00 E

Light beacons will be established in the following positions:

<i>Number</i>	<i>Position</i>	<i>Remarks</i>
1A	37° 56'.71 S 144° 55'.59 E	<i>Fl(2)G.4s</i>
2A	37° 56'.69 S 144° 55'.44 E	<i>Fl(2)R.4s</i>
E1	37° 57'.80 S 144° 55'.51 E	<i>Fl(2)G.4s</i>
E2	37° 57'.79 S 144° 55'.36 E	<i>Fl(2)R.4s</i>

Note: chart Aus 143 and Aus 157 will be amended by block correction; whereas Aus 155 will be updated by new edition.

**Chart which will be affected - Aus 143 - Aus 155 - AU438144****1035(T)/2009 AUSTRALIA - VICTORIA - Port Phillip - Williamstown - Harbour works completed***Former Notice - 925(T)/2009 is cancelled*

Victorian Notice 102(T)/2009 (AA419767)

Cancel this notice on receipt.

**Chart formerly affected - Aus 154 - Aus 155 - AU5XX154**

**1036(T)/2009 AUSTRALIA - VICTORIA - Port Phillip - Port Melbourne - River Yarra - Harbour works***Date - Until 24 May 2010*

Victorian Notice 116(T)/2009 (AA424855)

Works are in progress at West Gate Bridge (37° 49'.77 S 144° 53'.89 E) resulting in a reduction in the permissible air draught of transiting vessels.

Restrictions apply from 13 September to 5 October 2009 between 2100 and 0500 and from 5 October 2009 to 23 May 2010 between 0600 and 1400.

Vessels with air draught greater than 47.5m are not permitted to transit.

Vessels with air draught 43.5m to 47.5m are permitted to transit subject to evacuation of all personnel from the gantry or platforms.

Vessels with air draught 39.5m to 43.5m no restrictions apply, however notice is to be provided to construction crew for vessels transiting the West Gate Bridge.

Incoming vessels report to Melbourne VTS on passing breakwater pier and departing vessels report to Melbourne VTS on departing from berths upstream of the West Gate Bridge.

Melbourne VTS will relay the notice to the West Gate Bridge gantry master. Updated information about the operation can be obtained from Melbourne VTS on VHF Ch 12.

**Chart temporarily affected - Aus 154 - AU5XX154****1037(T)/2009 AUSTRALIA - VICTORIA - Port Phillip - Port Melbourne - River Yarra - Harbour works***Date - Until 30 November 2009*

Victorian Notice 117(T)/2009 (AA425236)

Works associated with the upgrade to Mobil Bunker Jetty (37° 49'.57 S 144° 53'.98 E) are in progress.

The barge *31 Pile Barge* and support vessel *Warneet* are on site and divers may be operating in the vicinity of the works.

The barge and support vessel can be contacted on 0411 016 795.

Further information can be obtained from Melbourne VTS on VHF Ch 12.

Mariners are advised to navigate with caution in the area.

**Chart temporarily affected - Aus 154 - AU5XX154****1038(T)/2009 AUSTRALIA - VICTORIA - Port Phillip - Port Melbourne - River Yarra - Harbour works completed***Former Notice - 120(T)/2009 is cancelled*

Port of Melbourne Corporation (AA424878)

Cancel this notice on receipt.

**Chart formerly affected - Aus 154 - AU5XX154****1039(T)/2009 AUSTRALIA - VICTORIA - Port Phillip - Port Melbourne - River Yarra - Light beacon re-established***Former Notice - 513(T)/2008 is cancelled*

Port of Melbourne Corporation (AA424878)

Cancel this notice on receipt.

**Chart formerly affected - Aus 154**

**1040(T)/2009 AUSTRALIA - VICTORIA - Port Phillip - Frankston - Harbour works completed**

*Former Notice* - 851(T)/2009 is cancelled

Victorian Notice 94(T)/2009 (AA417668)

Cancel this notice on receipt.

**Chart formerly affected - Aus 143 - AU439145****1041(T)/2009 AUSTRALIA - VICTORIA - Bass Strait - Pipeline**

*Former Notice* - 468(T)/2009 is cancelled

*Date* - Until 30 September 2009

Nexus Energy (AA424214, AA424216)

A pipeline has been laid between production wells Patricia (38° 01'.60 S 148° 26'.99 E (WGS84 datum)), Longtom 4 (38° 06'.29 S 148° 19'.98 E) and Longtom 3 (38° 05'.60 S 148° 18'.64 E).

Vessels *Rem Etive*, *Arc Sydney* and *Unlimited* are onsite carrying out final completion works.

**Chart temporarily affected - Aus 357A - Aus 422 - Aus 423**

## HYDROGRAPHIC REPORTS

<i>Locality</i>	<i>Report</i>	<i>Ship/Authority</i>	<i>Observer</i>
AHS- Product Product	ENotices Nomeclature		J Putt W Hoban
SOLOMON ISLANDS- Vangunu Island	Submarine volcano	SV <i>Antipodean</i>	D McKay
QLD- Gladstone	Light beacon		P Domigan

**NAVIGATION WARNINGS**

The following radio messages have been received during the period to 27 August 2009. Signal copies of these messages may be destroyed. It is recommended that the reprint of Navigational Warnings should be kept in a file or a book divided into areas. Cancellation should be made on receipt of signals and reprints.

Rigs on location other than those listed in the latest Section III summary are the subject of Radio Navigational Warnings. Rigs in transit will not be the subject of Warnings.

**AUSCOAST WARNING**

189 Cancelled.  
 190 Cancelled.  
 191 20 metre diameter FPSO mooring buoy in position 21° 32'.28 S 114° 07'.07 E marked by surface buoy with light flashing white morse (U). Installation vessels in vicinity. Wide berth requested.  
 192 Cancelled.  
 193 Cancelled.  
 194 Drill rig *West Atlas* in position 12° 40'.33 S 124° 32'.35 E. 2.5M clearance requested.  
 195 Cancelled.  
 196 Drill rig *Jack Bates* in position 20° 03'.85 S 113° 35'.98 E. 2.5M clearance requested.

**NAVAREA X WARNINGS**

017 Cancelled.

**Navigational warnings in force as at 270001UTC AUG 09.****Auscoast**

102 128 134 138 155 161 166 170 188 191 194 196

**Navarea X**

Nil.

**Summary of mobile drilling rigs as at 270001UTC AUG 09.**

<i>Name</i>	<i>Position</i>
West Atlas	12° 40'.33 S 124° 32'.35 E
Transocean Legend	13° 24'.73 S 122° 08'.78 E
Atwood Eagle	19° 54'.48 S 115° 07'.55 E
Ensco 7500	20° 12'.90 S 114° 32'.20 E
Jack Bates	20° 03'.85 S 113° 35'.98 E
Ocean Epoch	21° 31'.44 S 114° 06'.44 E
Nan Hai 6	21° 29'.20 S 113° 58'.70 E
Ocean Patriot	38° 18'.00 S 148° 42'.40 E

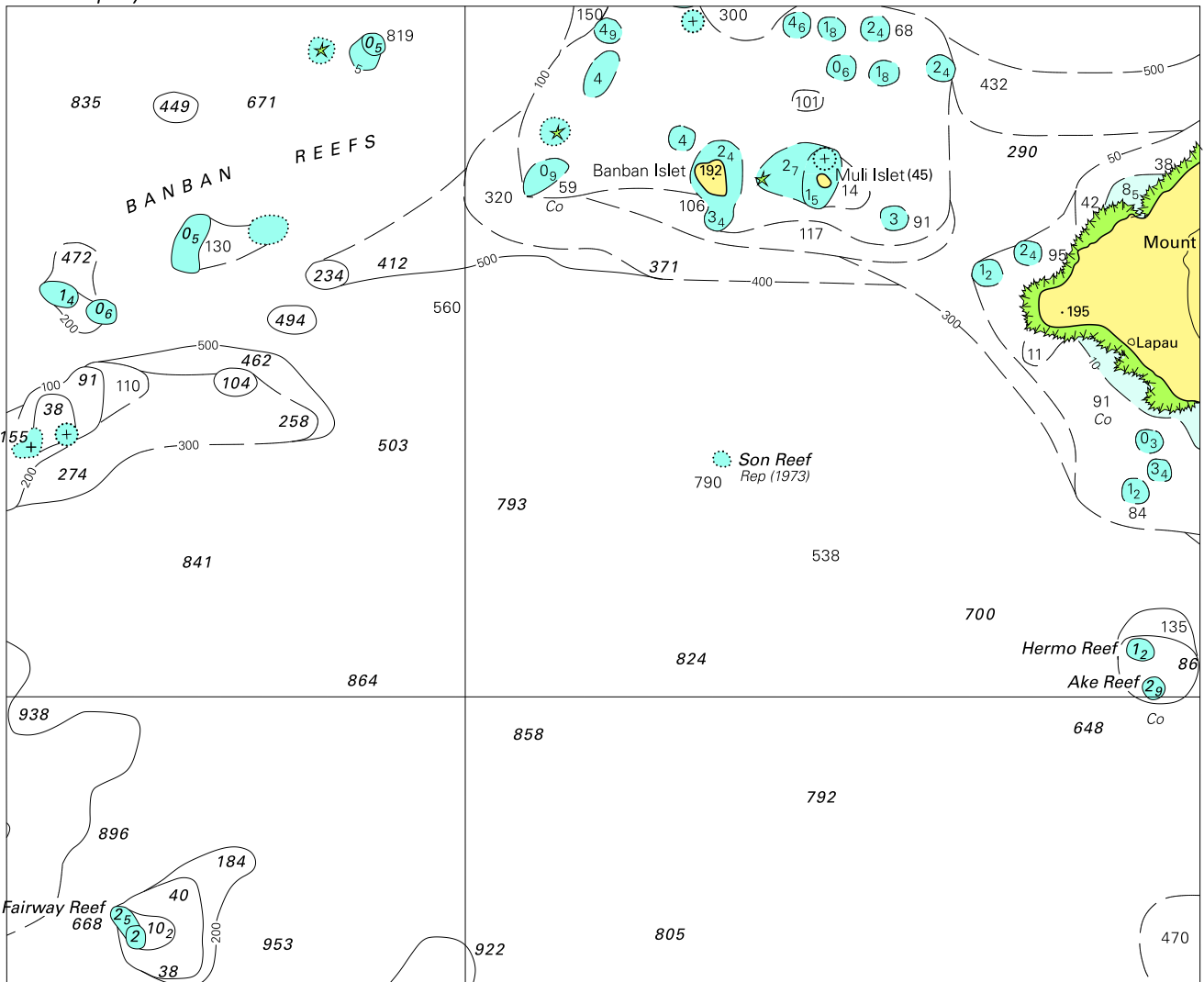
**NAVAREA XIV WARNINGS**

032 Cancelled.  
 033 Cancelled.  
 034 Cancelled.  
 035 Cancelled.  
 036 Cancelled.  
 037 Cancelled.  
 038 Cancelled.  
 039 Cancelled.  
 040 Cancelled.

**Navarea XIV warnings in force as at 270001UTC AUG 09.**

Nil.

To accompany Australian Notice to Mariners 993/2009

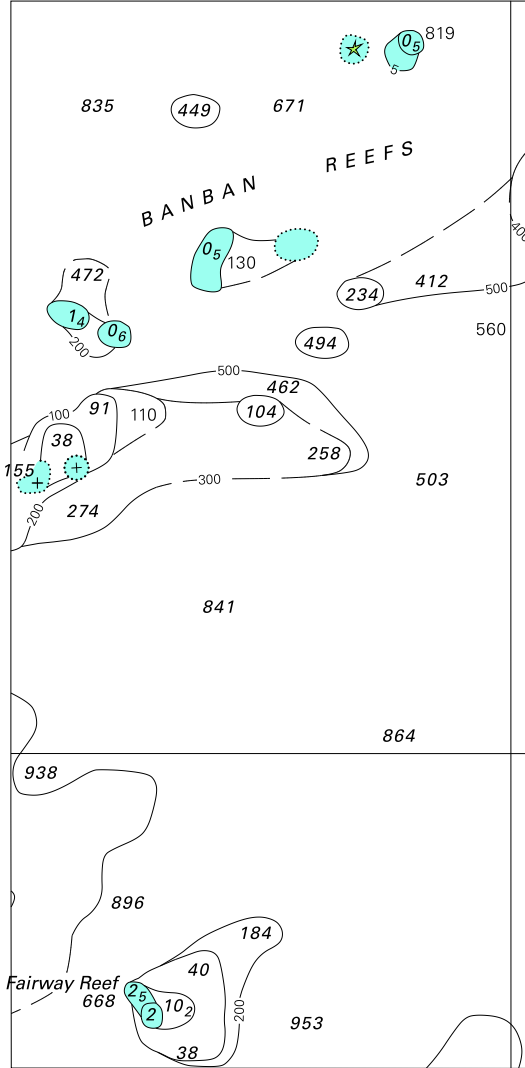


Block for chart Aus 546

© Commonwealth of Australia 2009

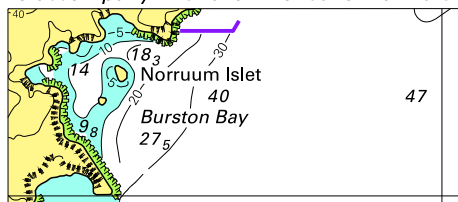
(172.0 x 141.1mm)

To accompany Australian Notice to Mariners 993/2009



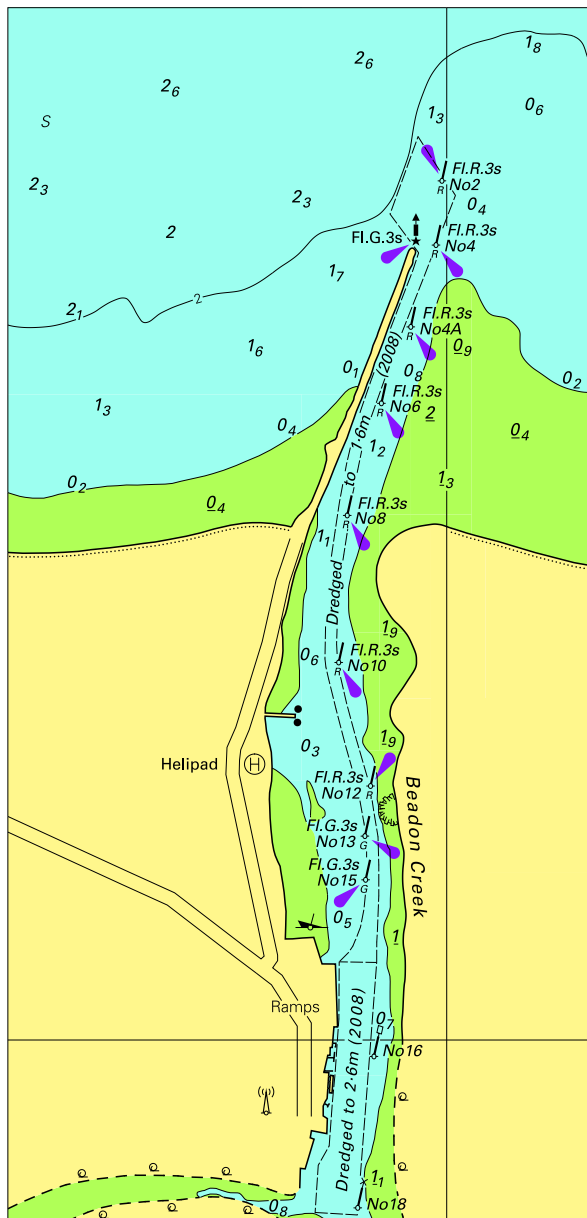
© Commonwealth of Australia 2009  
Block for chart Aus 547 (69.1 x 141.1mm)

To accompany Australian Notice to Mariners 994/2009



© Commonwealth of Australia 2009  
Block for chart Aus 715 (60.2 x 25.9mm)

To accompany Australian Notice to Mariners 1000/2009



© Commonwealth of Australia 2009

Block for chart Aus 64

(77.6 x 160.5mm)