



Australian Notices to Mariners are the authority for correcting Australian Charts and Publications

# AUSTRALIAN NOTICES TO MARINERS

Notices 930 - 983 

Published fortnightly by the Australian Hydrographic Service

Commodore R. NAIRN RAN  
Hydrographer of Australia

- 
- SECTIONS.**
- I. **Australian Notices to Mariners, including blocks and notes.**
  - II. **Hydrographic Reports.**
  - III. **Navigational Warnings.**

For Notices affecting Admiralty List of Lights and Fog Signals; List of Radio Signals; and Sailing Directions see **British Notices to Mariners.**

---

*The substance of these notices should be inserted on the charts affected.*

*Bearings are referred to the true compass and are reckoned clockwise from North; those relating to lights are given as seen by an observer from seaward. Positions quoted in permanent notices relate to the horizontal datum for the chart(s). When preliminary or temporary notices affect multiple charts, positions will be provided in relation to only one horizontal datum and that datum will be specified. When the multiple charts do not have a common horizontal datum, mariners will be required to adjust the position(s) for those charts not on the specified datum. The range quoted for a light is its nominal range. Depths are with reference to the chart datum of each chart. Heights are above mean high water springs or mean higher high water, as appropriate.*

*The capital letter (P) or (T) after the number of any notice denotes a preliminary or temporary notice respectively, which are contained separately at the end of the permanent notices. A star (\*) adjacent to the number of a notice indicates that the notice is based on original information.*

---

**Mariners are particularly requested to notify the AUSTRALIAN HYDROGRAPHIC SERVICE, Locked Bag 8801 Wollongong, NSW 2500 (Fax 02-4223 6599, e-mail [Hydro.NTM@defence.gov.au](mailto:Hydro.NTM@defence.gov.au) or, alternatively by filling in and submitting the [Hydrographic Notes](#) forms located on the web site – [www.hydro.gov.au](http://www.hydro.gov.au)), immediately on the discovery of new dangers or suspected dangers to navigation. For changes or defects in aids to navigation notify AusSAR (Fax 02-6230 6868 or email [rccaus@amsa.gov.au](mailto:rccaus@amsa.gov.au)).**

---

Copies of Australian notices are available free of charge from the Australian Hydrographic Service (AHS) website ([www.hydro.gov.au](http://www.hydro.gov.au)) and through the eNotices (email) service ([www.hydro.gov.au/enotices/enotices.htm](http://www.hydro.gov.au/enotices/enotices.htm)).

Individual Notices may be copied for the purpose of inserting Notice substance on official charts and publications. Paper copies may be printed by chart agents and distributed to customers on a cost recovery basis. Participating chart agents are listed on the AHS website as providing a 'Paper Notices to Mariners' service ([www.hydro.gov.au/prodserv/distributors/distributors.htm](http://www.hydro.gov.au/prodserv/distributors/distributors.htm)). Copies of the notices may not be sold for profit without prior written agreement.

---

## IMPORTANT NOTICE

This edition of Notices to Mariners includes all significant information affecting AHS products which the AHS has become aware of since the last edition. All reasonable efforts have been made to ensure the accuracy and completeness of the information, including third party information, on which these updates are based. The AHS regards third parties from which it receives information as reliable, however the AHS cannot verify all such information and errors may therefore exist. The AHS does not accept liability for errors in third party information.

---

© Commonwealth of Australia 2009

This work is copyright. Apart from any use permitted under the Copyright Act 1968, no part may be reproduced by any process, adapted, communicated or commercially exploited without prior written permission from The Commonwealth represented by the Australian Hydrographic Service.

## NUMERICAL INDEX OF NOTICES TO MARINERS

### Edition No 16

Notices	Aus Chart, INT Chart, ENC Cell, AHP
930.....	Aus 84, 126, 345, 752, 753, 780, 781, 920, AX 6028F, AU429154
931.....	Amendment to Australian Notice to Mariners No 2
932.....	Aus 219
933.....	Aus 618
934.....	Aus 235, 236, 814
935.....	Aus 237, 238
936.....	Aus 240, 365
937.....	Aus 244, 245
938.....	Aus 822, AX 0822E
939.....	Aus 821
940.....	Aus 299
941.....	Aus 377, AX 60377
942.....	Aus 522, 523, 4620, 4622, INT 620, 622, AX 4620F
943.....	Aus 672
944.....	Aus 389, 392, 462, 4603, 4604, 4622, INT 603, 604, 622, AX 4603F, 4604F
945.....	Aus 4
946.....	Aus 15
947.....	Aus 313, AX 0313F
948.....	Aus 115
949.....	Aus 116, 756, 757
950.....	Aus 119
951.....	Aus 422, 423, 487, 767
952.....	Aus 790
953.....	Aus 154
954(T).....	Aus 198, 199, AU5198X9
955(T).....	Aus 238, AU5237X8
956(T).....	Aus 236
957(T).....	Aus 235
958(T).....	Aus 235
959(T).....	Aus 246, 819, AU424151
960(T).....	Aus 244, 245, AU5244X5
961(T).....	Aus 245, AU5244X5
962(T).....	Aus 260, 367, 822, AX 0260E, 0367E, 0822E, 60260, AU423150
963(T).....	Aus 367, 822, AX 0367E, 0822E, AU423150
964(T).....	Aus 249, 250, AX 0249E, AU5250P2
965(T).....	Aus 249, 250, AX 0249E, AU5250P2
966(T).....	Aus 250, AU5250P1
967(T).....	Aus 256, 257, AU5XX257
968(T).....	Aus 830, AX 6027S, AU417145
969(T).....	Aus 4, AU5XX4P1
970(T).....	Aus 6
971(T).....	Aus 314, 319, 4603, 4721, 4722, INT 603, 721, 722, AX 0314F, 0319F, 4603F, 4721F, 4722F, AU130120, 313121
972(T).....	Aus 314, 319, AX 0314F, 0319F, AU313124
973(T).....	Aus 414, 415, 4603, 4708, INT 603, 708, AX 0415F, 4603F, 4708F, AU130090
974(T).....	Aus 57, 58, 59, 327, 328, 741, 742, AU421116, 5XXX58
975(T).....	Aus 112, 113, AX 63112, AU5XX113
976(T).....	Aus 119, AU5119P1
977(T).....	Aus 345, 347, 780
978(T).....	Aus 169
979(T).....	Aus 164, AU5164P1
980(T).....	Aus 155, AU5155P1
981(T).....	Aus 154, AU5XX154
982(T).....	Aus 154, 155, AU438144, 5XX154
983(T).....	Aus 182



ENC Cell	Notices
AU130090.....	973(T)
AU130120.....	971(T)
AU313121.....	971(T)
AU313124.....	972(T)
AU417145.....	968(T)
AU421116.....	974(T)
AU423150.....	962(T), 963(T)
AU424151.....	959(T)
AU429154.....	930
AU438144.....	982(T)
AU5XX4P1.....	969(T)
AU5XXX58.....	974(T)
AU5XX113.....	975(T)
AU5119P1.....	976(T)
AU5XX154.....	981(T), 982(T)
AU5155P1.....	980(T)
AU5164P1.....	979(T)
AU5198X9.....	954(T)
AU5237X8.....	955(T)
AU5244X5.....	960(T), 961(T)
AU5250P1.....	966(T)
AU5250P2.....	964(T), 965(T)
AU5XX257.....	967(T)

**930 AUSTRALIA - Product**

Australian Hydrographic Service (AA420613)

**New Electronic Navigation Chart (Seafarer ENC)**

<i>Cell Name</i>	<i>Released</i>	<i>Title</i>
AU429154	August 2009	Coral Sea - Cell 1

**New Miscellaneous Chart**

<i>Chart</i>	<i>Published</i>	<i>Title</i>	<i>Scale</i>	<i>Remarks</i>
AX 6028F	14/08/2009	Australia - Torres Strait - Great North East channel - Basilisk Passage to Moon Passage	1:50 000	Fleet use only.

**New Chart to be published shortly**

<i>Chart</i>	<i>Title</i>	<i>Scale</i>	<i>Expected Publication Date</i>	<i>Expected Stock Availability</i>
Aus 84	Australia - West Coast - Western Australia - Plans in Western Australia (Sheet 6) Plans: Jurien Bay Port Gregory Port Denison	1:25 000 1:15 000 1:12 500	14 August 2009	21 September 2009

**New Edition to be published shortly**

<i>Chart</i>	<i>Title</i>	<i>Scale</i>	<i>Expected Publication Date</i>	<i>Expected Stock Availability</i>
Aus 752	Australia - West Coast - Western Australia - Pelsaert Island to Beagle Islands	1:150 000	14 August 2009	21 September 2009
Aus 753	Australia - West Coast - Western Australia - Beagle Islands to Lancelin	1:150 000	14 August 2009	21 September 2009
Aus 920	Indian Ocean - Plans in Christmas Island Plans: Flying Fish Cove Norris Point	1:7 500 1:7 500	14 August 2009	21 September 2009

**Chart to be permanently withdrawn without replacement**

<i>Chart</i>	<i>On publication of new chart/edition</i>
Aus 345	Aus 126, Aus 780, Aus 781

For further details refer to the AHS website at [www.hydro.gov.au](http://www.hydro.gov.au) for new edition and new chart stock arrival information.

When placing orders with a chart agent, mariners should advise whether their order pertains to the current edition or the new edition.

**931 AUSTRALIA - Product - Amendment to Australian Notice to Mariners No 2**

Australian Hydrographic Service (AA420602)

Page 15

*Insert* new chart agent:

CHINA

**Sweethigh Navigation Technology Limited**

Room 709, Shanghai Modern Communication Building  
No 201 Xinjinjiao Road, Pudong  
Shanghai 201206

Telephone

(86) 21 5032 4800

**C**

Fax

(86) 21 5032 4801

Email

charts@smoothvoyage.com

Website

www.smoothvoyage.com

**932\* AUSTRALIA - NEW SOUTH WALES - Camden Haven - Nav aids**

NSW Maritime (AA405069)

**Aus 219 (plan, Camden Haven) [747/2009]**

<i>Insert</i>	accompanying block	31° 38'.5 S	152° 49'.5 E
---------------	--------------------	-------------	--------------

**933\* AUSTRALIA - TASMAN SEA - Elizabeth Reef - Contour**

Australian Hydrographic Service (AA419723)

**Aus 618 (plan, Elizabeth Reef) [114/2006]**

Insert	contour, between	29° 55'.23 S	159° 05'.48 E
		29° 55'.16 S	159° 05'.43 E
	10m contour value	29° 54'.80 S	159° 05'.05 E

**934\* AUSTRALIA - QUEENSLAND - Moreton Bay - North West Channel - Bypass channel**

Maritime Safety Queensland (AA419711 - AA419713)

**Aus 235 [813/2009]**

Insert	dashed line, between	26° 51'.56 S	153° 09'.08 E
		27° 02'.38 S	153° 15'.26 E
	dashed line, between	26° 53'.26 S	153° 10'.26 E
		27° 01'.12 S	153° 14'.75 E
	legend, <i>North West Bypass Channel</i> , centred on	26° 56'.80 S	153° 12'.18 E

**Aus 236 [813/2009]**

Insert	dashed line, between	26° 57'.47 S	153° 12'.46 E
		27° 02'.38 S	153° 15'.26 E
	dashed line, between	26° 57'.47 S	153° 12'.66 E
		27° 01'.12 S	153° 14'.75 E
	legend, <i>North West Bypass Channel</i> , centred on	26° 59'.70 S	153° 13'.85 E

**Aus 814 [813/2009]**

Insert	dashed line, between	26° 51'.66 S	153° 09'.02 E
		27° 02'.48 S	153° 15'.20 E
	dashed line, between	26° 53'.36 S	153° 10'.20 E
		27° 01'.22 S	153° 14'.69 E
	legend, <i>North West Bypass Channel</i> , centred on	26° 56'.9 S	153° 12'.1 E

**935\* AUSTRALIA - QUEENSLAND - Brisbane River - Quarantine Flats Reach - Infrastructure**

Maritime Safety Queensland (AA420917 - AA420919)

**Aus 237 [750/2009]**

Insert	continuous line, between	27° 24'.833 S	153° 08'.513 E
		27° 24'.825 S	153° 08'.569 E
	continuous line, between	27° 24'.870 S	153° 08'.493 E
		27° 24'.867 S	153° 08'.543 E

Delete	depth, 1 <sub>2</sub> m	27° 24'.82 S	153° 08'.56 E
--------	-------------------------	--------------	---------------

**Aus 238 [239/2009]**

Insert	continuous line, between	27° 24'.833 S	153° 08'.513 E
		27° 24'.825 S	153° 08'.569 E
	continuous line, between	27° 24'.870 S	153° 08'.493 E
		27° 24'.867 S	153° 08'.543 E

Delete	depth, 1 <sub>2</sub> m	27° 24'.82 S	153° 08'.56 E
--------	-------------------------	--------------	---------------

**936\* AUSTRALIA - QUEENSLAND - Wide Bay - Wreck**

Maritime Safety Queensland Notice 233/2009 (AA405408)

**Aus 240 [860/2009]**

Insert	safe clearance depth, 15m, enclosed by danger circle with legend, <i>Wk</i>	25° 52'.32 S	153° 08'.26 E
--------	---	--------------	---------------

**Aus 365 [814/2009]**

Insert	safe clearance depth, 8 <sub>1</sub> m, enclosed by danger circle with legend, <i>Wk</i>	25° 52'.42 S	153° 08'.20 E
--------	--	--------------	---------------

Delete	depth, 12fm	25° 52'.0 S	153° 08'.2 E
--------	-------------	-------------	--------------

**937\* AUSTRALIA - QUEENSLAND - Gladstone - Auckland Channel to Clinton Bypass Channel - Light beacons altered**

Maritime Safety Queensland (AA419031 - AA419033)

**Aus 244 (plan, South Trees Point) [139/2009]**

Insert	starboard lateral light beacon, <i>Fl.G.4s A1</i> , with topmark	23° 50'.730 S	151° 18'.431 E
--------	--	---------------	----------------

Delete	light beacon	23° 50'.73 S	151° 18'.42 E
--------	--------------	--------------	---------------

**Aus 244 (plan, Gladstone and Adjacent Wharves)**

Insert	structure colour, <i>G</i>	23° 49'.375 S	151° 15'.400 E
--------	----------------------------	---------------	----------------

**Aus 245 [357/2009]**

Insert	starboard lateral light beacon, <i>Fl.G.4s A1</i> , with topmark	23° 50'.730 S	151° 18'.431 E
	structure colour, <i>G</i>	23° 49'.375 S	151° 15'.400 E

Delete	light beacon	23° 50'.73 S	151° 18'.42 E
--------	--------------	--------------	---------------

**938\* AUSTRALIA - QUEENSLAND - Shoalwater Bay - Swan Island - Depths**HMAS *Leeuwin* (DHDB 1208520)**Aus 822 [817/2009]**

Insert	accompanying block	22° 20'.0 S	150° 15'.0 E
--------	--------------------	-------------	--------------

**AX 0822E [NC 19/6/2009]**

Insert	accompanying block	22° 20'.0 S	150° 15'.0 E
--------	--------------------	-------------	--------------

**939\* AUSTRALIA - QUEENSLAND - Hydrographers Passage - Depths***Former Notice - 266(P)/2009 is cancelled*

LADS Flight (AA420561)

**Aus 821 [291/2009]**

Insert	depth, 23 <sub>6</sub> m, and extend contour W to enclose	19° 50'.26 S	150° 25'.51 E
	depth, 18 <sub>6</sub> m, and extend contour SW to enclose	19° 48'.70 S	150° 22'.99 E

Substitute	depth, 15 <sub>9</sub> m, for depth, 17 <sub>4</sub> m	19° 52'.1 S	150° 27'.7 E
	depth, 22 <sub>8</sub> m, for depth, 28m	19° 49'.9 S	150° 25'.1 E
	depth, 12 <sub>6</sub> m, for depth, 12 <sub>8</sub> m	19° 52'.0 S	150° 22'.2 E

Delete	depth, 28 <sub>6</sub> m	19° 50'.2 S	150° 25'.7 E
	depth, 19 <sub>1</sub> m	19° 48'.6 S	150° 23'.1 E

**940\* AUSTRALIA - QUEENSLAND - Thursday Island - Power station demolished**

M Hall (AA420476)

**Aus 299 [703/2009]**

Delete building and legend, Power Stn 10° 35'.1 S 142° 13'.2 E

**941\* AUSTRALIA - CORAL SEA - Eastern Fields to Dalrymple Island - Legends**

UKHO (AA419701)

**Aus 377 [863/2009]**Amend legend to *EEZ* (see *AMJ Note*) 9° 36'.2 S 144° 23'.3 E  
legend to *EEZ* (see *AMJ Note*) 10° 40'.9 S 145° 19'.0 E

Delete legend, EEZ 9° 33'.1 S 143° 18'.0 E

**AX 60377 [863/2009]**Amend legend to *EEZ* (see *AMJ Note*) 9° 36'.2 S 144° 23'.3 E  
legend to *EEZ* (see *AMJ Note*) 10° 40'.9 S 145° 19'.0 E

Delete legend, EEZ 9° 33'.1 S 143° 18'.0 E

**942\* PAPUA NEW GUINEA - Huon Gulf - Depths**

Geoscience Australia (AA421242)

**Aus 522 [597/2007]**Insert depth, 683m, enclosed by contour 7° 16'.94 S 147° 29'.44 E  
depth, 745m, and extend contour NE to enclose 7° 23'.07 S 147° 37'.25 EDelete depth, 977m 7° 23'.6 S 147° 37'.1 E  
depth, 1132m 7° 24'.2 S 147° 37'.6 E**Aus 523 [45/2009]**Insert depth, 218m, enclosed by contour 6° 50'.89 S 147° 04'.79 E  
depth, 683m, enclosed by contour 7° 16'.94 S 147° 29'.44 E  
depth, 745m 7° 23'.07 S 147° 37'.25 E  
contour, between 7° 22'.38 S 147° 36'.74 E  
7° 23'.36 S 147° 37'.92 E

Delete depth, 329m 6° 50'.9 S 147° 05'.0 E

**Aus 4620 (INT 620) [864/2009]**

Insert depth, 683m, and extend contour E to enclose 7° 16'.9 S 147° 29'.4 E

**Aus 4622 (INT 622) [539/2009]**

Insert depth, 683m, and extend contour E to enclose 7° 16'.9 S 147° 29'.4 E

Substitute depth, 218m, for depth, 265m 6° 50'.0 S 147° 05'.0 E

**AX 4620F [864/2009]**

Insert depth, 683m, and extend contour E to enclose 7° 16'.9 S 147° 29'.4 E

**943\* PAPUA NEW GUINEA - New Britain - Tavanatangir Harbour - Depths**HMAS *Mermaid* (DHDB 581034)**Aus 672 [NC 27/2/2009]**

Insert accompanying block 4° 47'.9 S 151° 40'.8 E

**944\* PAPUA NEW GUINEA - Bismarck Archipelago - Depths**

Geoscience Australia (AA421244)

**Aus 389 [NC 28/3/2008]**

Insert	depth, 1420m	2° 11'.47 S	144° 00'.47 E
--------	--------------	-------------	---------------

**Aus 392 [410/2009]**

Insert	depth, 1739m, enclosed by contour	3° 00'.85 S	149° 15'.40 E
	depth, 1185m	2° 35'.54 S	149° 32'.58 E

**Aus 462 [539/2009]**

Insert	depth, 776fm	2° 11'.5 S	144° 00'.5 E
	depth, 385fm	1° 19'.6 S	143° 23'.7 E
	depth, 474fm	3° 39'.4 S	148° 44'.9 E
	depth, 906fm	3° 03'.0 S	149° 12'.4 E
	depth, 640fm	2° 35'.5 S	149° 32'.6 E

**Aus 4603 (INT 603) [868/2009]**

Insert	depth, 713m, and extend 1000m contour W to enclose	1° 19'.6 S	143° 23'.7 E
--------	--	------------	--------------

**Aus 4604 (INT 604) [755/2009]**

Insert	depth, 1675m, and extend contour SE to enclose contour to enclose depths (a) and (b)	3° 03'.0 S	149° 12'.4 E
		3° 35'.0 S	148° 38'.0 E
		3° 42'.0 S	148° 57'.0 E

Delete	depth, 1784m	3° 01'.0 S	149° 10'.0 E
	contour enclosing depth, 546m (a)	3° 37'.0 S	148° 40'.0 E
	contour enclosing depth, 675m (b)	3° 41'.0 S	148° 55'.0 E

**Aus 4622 (INT 622) [942/2009]**

Insert	depth, 1420m	2° 11'.5 S	144° 00'.5 E
	depth, 713m, and extend contour W to enclose contour to enclose depths (a) and (b)	1° 19'.6 S	143° 23'.7 E
		3° 35'.0 S	148° 38'.0 E
		3° 42'.0 S	148° 57'.0 E
	depth, 1675m, and extend contour SE to enclose	3° 03'.0 S	149° 12'.4 E

Delete	depth, 1784m	3° 01'.0 S	149° 10'.0 E
	depth, 821m	1° 18'.0 S	143° 29'.0 E
	contour enclosing depth, 546m (a)	3° 37'.0 S	148° 40'.0 E
	contour enclosing depth, 675m (b)	3° 41'.0 S	148° 55'.0 E

**AX 4603F [868/2009]**

Insert	depth, 713m, and extend 1000m contour W to enclose	1° 19'.6 S	143° 23'.7 E
--------	--	------------	--------------

**AX 4604F [556/2009]**

Insert	contour to enclose depths (a) and (b)	3° 35'.0 S	148° 38'.0 E
		3° 42'.0 S	148° 57'.0 E
Delete	depth, 1675m, and extend contour SE to enclose contour enclosing depth, 546m (a)	3° 03'.0 S	149° 12'.4 E
	contour enclosing depth, 675m (b)	3° 37'.0 S	148° 40'.0 E
	depth, 1784m	3° 41'.0 S	148° 55'.0 E
		3° 01'.0 S	149° 10'.0 E

**945\* AUSTRALIA - QUEENSLAND - Weipa - Lights altered**

Maritime Safety Queensland Notice 126/2009 (AA389670)

**Aus 4 (plan, Port of Weipa) [865/2009]**

Amend	light to <i>F.Bu.26m (occas) (F day (occas))</i>	12° 39'.74 S	141° 50'.90 E
	light to <i>F.Bu.23m (occas) (F day (occas))</i>	12° 39'.81 S	141° 51'.03 E

**946\* AUSTRALIA - NORTHERN TERRITORY - Gove Harbour - Inverell Bay - Wreck**

D Davidson (AA421686)

**Aus 15 (plan, Gove Harbour) [245/2009]**

Insert	stranded wreck	12° 11'.84 S	136° 42'.20 E
--------	----------------	--------------	---------------

**947\* INDONESIA - Pulau Leti - Tanjung Tutpateh - Racon altered**

UKHO (AA419631)

**Aus 313 [648/2009]**

Amend	legend to <i>Racon</i> (T)	8° 13'.0 S	127° 38'.0 E
-------	----------------------------	------------	--------------

**AX 0313F [648/2009]**

Amend	legend to <i>Racon</i> (T)	8° 13'.0 S	127° 38'.0 E
-------	----------------------------	------------	--------------

**948\* AUSTRALIA - WESTERN AUSTRALIA - Bunbury - Koombana Bay - Lights established**

Department of Transport (AA415262, AA415263)

**Aus 115 (plan, Port of Bunbury) [254/2009]**

Insert	light, <i>Fl. Y.2s</i>	33° 18'.168 S	115° 40'.223 E
	light, <i>Fl. Y.2s</i>	33° 18'.227 S	115° 40'.189 E

**949\* AUSTRALIA - WESTERN AUSTRALIA - Hamelin Bay to Cape Leeuwin - Historic wrecks**

Australian Hydrographic Service (AA418710), Western Australian Museum (AA420389)

**Aus 116 (plan, Flinders Bay) [872/2009]**

Insert	depth, 30 <sub>8</sub> m, enclosed by danger circle with magenta legend, <i>Historic Wk</i> (see Note)	34° 25'.33 S	115° 08'.23 E
--------	--	--------------	---------------

Delete	depth, 32m	34° 25'.3 S	115° 08'.4 E
	depth, 29 <sub>6</sub> m	34° 25'.2 S	115° 08'.2 E

**Aus116 (plan, Hamelin Bay)**

Insert	magenta legend, <i>Historic Wk</i> (see Note), centred on	34° 12'.30 S	115° 02'.10 E
	magenta legend, <i>Historic Wks</i> (see Note), centred on	34° 12'.87 S	115° 01'.70 E

Move	historic wreck	34° 12'.5 S	115° 02'.0 E
	to	34° 12'.30 S	115° 02'.22 E
	historic wreck	34° 12'.8 S	115° 01'.9 E
	to	34° 12'.87 S	115° 02'.02 E
	historic wreck	34° 12'.9 S	115° 01'.8 E
	to	34° 12'.99 S	115° 01'.91 E

Delete	legend, Historic Wrecks (see Note)	34° 12'.6 S	115° 01'.9 E
--------	------------------------------------	-------------	--------------

**Aus 756 [NE 16/1/2009]**

Insert	depth, 30 <sub>8</sub> m, enclosed by danger circle with magenta legend, <i>Historic Wk</i> (see Note)	34° 25'.33 S	115° 08'.23 E
	historic wreck	34° 12'.30 S	115° 02'.22 E
	historic wreck	34° 12'.92 S	115° 01'.96 E
	magenta legend, <i>Historic Wks</i> (see Note), centred on	34° 12'.60 S	115° 01'.27 E

Move	historic wreck	34° 17'.4 S	115° 02'.4 E
	to	34° 17'.80 S	115° 02'.42 E

Delete	legend, (see Note) Historic Wrecks	34° 11'.8 S	115° 00'.5 E
	depth, 26m	34° 25'.5 S	115° 08'.0 E
	historic wrecks, centred on	34° 12'.0 S	115° 01'.9 E

**949\* AUSTRALIA - WESTERN AUSTRALIA - Hamelin Bay to Cape Leeuwin - Historic wrecks (continued)****Aus 757 [NE 16/1/2009]**

Insert	depth, 30 <sub>8</sub> m, enclosed by danger circle with magenta legend, <i>Historic Wk (see Note)</i>	34° 25'.33 S	115° 08'.23 E
Move	historic wreck to	34° 17'.4 S 34° 17'.80 S	115° 02'.4 E 115° 02'.42 E
Delete	depth, 26m	34° 25'.5 S	115° 08'.0 E

**950\* AUSTRALIA - WESTERN AUSTRALIA - Bandy Creek - Light beacon**

Department of Transport (AA415262, AA415263)

**Aus 119 (plan, Bandy Creek Boat Harbour) [875/2009]**

Move	light beacon to	33° 50'.01 S 33° 50'.007 S	121° 55'.95 E 121° 55'.950 E
------	-----------------	-------------------------------	---------------------------------

**951\* AUSTRALIA - TASMANIA - Eddystone Point - Depth eastwards**

Geoscience Australia (AA421241)

**Aus 422 [612/2009]**

Insert	depth, 182fm	41° 02'.4 S	148° 44'.3 E
--------	--------------	-------------	--------------

**Aus 423 [805/2009]**

Insert	depth, 182fm	41° 02'.4 S	148° 44'.3 E
--------	--------------	-------------	--------------

**Aus 487 [612/2009]**

Insert	depth, 333m, enclosed by contour	41° 02'.38 S	148° 44'.27 E
--------	----------------------------------	--------------	---------------

**Aus 767 [424/2009]**

Insert	depth, 333m, and extend contour SE to enclose	41° 02'.38 S	148° 44'.27 E
--------	---	--------------	---------------

Delete	depth, 393m	41° 02'.2 S	148° 43'.8 E
--------	-------------	-------------	--------------

**952\* AUSTRALIA - TASMANIA - Stokes Point to Rocky Cape - Chart note**

Australian Hydrographic Service (AA421830)

**Aus 790 [656/2009]**

Delete	note, TIDAL HEIGHTS	40° 18'.0 S	145° 27'.0 E
--------	---------------------	-------------	--------------

**953\* AUSTRALIA - VICTORIA - Port Phillip - Hobsons Bay - Light buoy established***Former Notice - 927(T)/2009 is cancelled*

Victorian Notice 106/2009 (AA421252)

**Aus 154 [884/2009]**

Insert	special pillar light buoy, <i>Fl(2)Y.4s</i> , with topmark	37° 50'.70 S	144° 55'.36 E
--------	--	--------------	---------------

**954(T)/2009 AUSTRALIA - NEW SOUTH WALES - Botany Bay - Scientific instrument**

*Former Notice* - 888(T)/2009 is cancelled  
 Cardno Lawson Treloar (AA423448)

A special light buoy, *Fl(5)Y.20s*, exists in position 33° 59'.13 S 151° 11'.16 E.

**Chart temporarily affected - Aus 198 - Aus 199 - AU5198X9****955(T)/2009 AUSTRALIA - QUEENSLAND - Brisbane River - Gibson Island - Harbour works**

*Date* - Until 9 September 2009  
 Maritime Safety Queensland Notice 527(T)/2009 (AA421759)

Works associated with the refurbishment of the jetty (27° 25'.9 S 153° 07'.4 E) are in progress.

Barges and workboats will be on site.

Mariners are advised to navigate with caution in the area.

**Chart temporarily affected - Aus 238 - AU5237X8****956(T)/2009 AUSTRALIA - QUEENSLAND - Moreton Bay - Scarborough - Dredging operations**

*Former Notice* - 261(T)/2009 is cancelled  
*Date* - Until 10 September 2009  
 Maritime Safety Queensland Notice 100(T)/2009, 512(T)/2009 (AA386106, AA420573)

Dredging operations are in progress in Scarborough Harbour in an area marked by light buoys, *Fl.R.3s*, bounded by the following positions:

27° 11'.57 S 153° 06'.39 E  
 27° 11'.56 S 153° 06'.49 E  
 27° 11'.59 S 153° 06'.54 E.

The dredges *Auckland*, *Westpark* and *Soundcem* are onsite and will display appropriate lights and shapes and will monitor VHF Ch 12.

Vessels transiting the harbour should do so by using the recognised harbour fairways that are situated south of the old pile mooring area. Vessels should not attempt to use the direct route located north of the old pile moorings, when travelling between the boat ramp and harbour entrance.

Mariners are advised to navigate with caution in the area.

**Chart temporarily affected - Aus 236****957(T)/2009 AUSTRALIA - QUEENSLAND - Caloundra - Harbour works**

*Date* - Until 30 October 2009  
 Maritime Safety Queensland Notice 523(T)/2009 (AA421766)

Works associated with the construction of a jetty (26° 48'.4 S 153° 07'.8 E) are in progress.

The barge, *Groper*, will be on site and will display appropriate lights and shapes.

Mariners are advised to navigate with caution in the area.

**Chart temporarily affected - Aus 235**

**958(T)/2009 AUSTRALIA - QUEENSLAND - Mooloolaba - Shoaling***Former Notice* - 840(T)/2009 is cancelled

Maritime Safety Queensland Notice 513(T)/2009 (AA420571)

Shoaling, with a least depth of 2.2m (LAT), exists within the entrance to Mooloolah River.

Lesser depths of 1.3m exist between 26° 40'.81 S 153° 07'.95 E and 26° 40'.86 S 153° 08'.01 E.

A shoal patch with a least depth of 2.4m exists in the vicinity of position 26° 40'.81 S 153° 07'.86 E.

Mariners are advised to navigate with caution in the area.

**Chart temporarily affected - Aus 235****959(T)/2009 AUSTRALIA - QUEENSLAND - Gladstone - South Channel - Scientific instrument**

Maritime Safety Queensland Notice 520(T)/2009 (AA421784)

A special light buoy, *Fl(5)Y.20s*, exists in position 23° 53'.77 S 151° 30'.25 E.

Mariners are not to use this buoy as a mooring.

**Chart temporarily affected - Aus 246 - Aus 819 - AU424151****960(T)/2009 AUSTRALIA - QUEENSLAND - Gladstone - Targinie Channel - Light buoy withdrawn**

Maritime Safety Queensland Notice 484(T)/2009 (AA420605)

T10 light buoy (23° 47'.53 S 151° 11'.43 E) has been temporarily withdrawn.

**Chart temporarily affected - Aus 244 - Aus 245 - AU5244X5****961(T)/2009 AUSTRALIA - QUEENSLAND - Gladstone - North Passage Island - Scientific instrument***Date* - Until 14 September 2009

Maritime Safety Queensland Notice 535(T)/2009 (AA422883)

A scientific instrument exists in position 23° 45'.54 S 151° 10'.77 E.

**Chart temporarily affected - Aus 245 - AU5244X5****962(T)/2009 AUSTRALIA - QUEENSLAND - Shoalwater Bay - Live firing***Date* - Until 29 August 2009

Maritime Safety Queensland Notice 532(T)/2009 (AA422266)

Live firing activities will be conducted in the Shoalwater Bay training area during the period 16 to 28 August 2009.

A marine danger area extends to all waters within a 3nm radius of 22° 23'.00 S 150° 30'.30 E.

All waters, creeks, beaches and other areas within the declared marine danger area are not available for access.

Mariners are advised to keep clear of this area throughout the above times.

**Chart temporarily affected - Aus 260 - Aus 367 - Aus 822 - AX 0260E - AX 0367E - AX 0822E - AX 60260 - AU423150**

**963(T)/2009 AUSTRALIA - QUEENSLAND - Shoalwater Bay - Live firing***Date - Until 5 September 2009*

Maritime Safety Queensland Notice 487(T)/2009 (AA419765)

Live firing activities will be conducted in the Shoalwater Bay training area during the period 24 August to 4 September 2009.

A marine danger area extends to all waters south of the line defined by the following positions:

22° 30'.73 S 150° 26'.34 E

22° 30'.20 S 150° 33'.89 E.

All waters, creeks, beaches and other areas within the declared marine danger area are not available for access.

Mariners are advised to keep clear of this area throughout the above times.

**Chart temporarily affected - Aus 367 - Aus 822 – AX 0367E – AX 0822E - AU423150****964(T)/2009 AUSTRALIA - QUEENSLAND - Hay Point - Depth information**

Maritime Safety Queensland Notice 514(T)/2009 (AA422706)

The available depth for the navigation channel in Hay Point tug harbour is *5.1m (LAT)*.

Lesser depths exist close to the outer edge of the channel and at the southern end of the tug berths.

**Chart temporarily affected - Aus 249 - Aus 250 - AX 0249E - AU5250P2****965(T)/2009 AUSTRALIA - QUEENSLAND - Hay Point - Depth information***Former Notice - 168(T)/2009 is cancelled*

Maritime Safety Queensland Notice 542(T)/2009 (AA423447)

Available depths as at 13 August 2009:

	<i>Metres</i>
* HPS Berth No 1	16.3
HPS Berth No 2	16.5
DBCT Berth No 1	18.0
DBCT Berth No 2	18.1
DBCT Berth No 3	18.7
DBCT Berth No 4	18.6

\* Indicates revised entry.

**Chart temporarily affected - Aus 249 - Aus 250 - AX 0249E - AU5250P2****966(T)/2009 AUSTRALIA - QUEENSLAND - Mackay - Depth information***Former Notice - 564(T)/2009 is cancelled*

Maritime Safety Queensland Notice 519(T)/2009 (AA421785)

Available depths as at 31 July 2009:

	<i>Metres</i>
Entrance Transit (Eastern Bank)	8.6
Entrance Channel	9.0
Swing Basin (Inwards)	8.6
Swing Basin (Outwards)	8.6
* Berth No 1	10.8
* Berth No 3	12.9
* Composite Nos 3/4 Panamax Berth	12.9
* Berth No 4	10.0
* Berth No 5	12.3

\* Caution: Lesser depths may occur in berthing boxes but are not considered to have an impact on shipping.

**Chart temporarily affected - Aus 250 - AU5250P1**

**967(T)/2009 AUSTRALIA - QUEENSLAND - Townsville - Depth information**

Former Notice - 443(T)/2009 is cancelled

Maritime Safety Queensland Notice 543(T)/2009 (AA423443)

Available depths as at 12 August 2009:

	<i>Metres</i>	<i>Remarks</i>
Sea Channel	11.7	
Platypus Channel	11.5	
Outer Harbour:		
* Arrival Channel	7.6	West of a line from dolphin across end of berth pocket to edge of arrival channel
Departure Channel	11.6	
Inner Harbour:		
* Harbour	12.0	
Berths:		
* No 1	11.6	
No 2	12.3	
No 3	11.8	
No 4	10.5	
No 7	11.0	
No 8	10.1	Seaward of 10 metre mark
* No 9	11.7	
No 10	9.6	To seaward dolphin
No 11	11.6	
CB Marine	1.9	
Between No 7 and No 8	10.4	Seaward of zero mark at No 7
Between No 9 and No 10	10.6	Seaward of zero mark at No 10
Ross River Channel	1.0	
Ross Creek	-	No declared depth

\* Indicates revised entry.

**Chart temporarily affected - Aus 256 - Aus 257 - AU5XX257****968(T)/2009 AUSTRALIA - QUEENSLAND - Arlington Reef - Wreck**

Maritime Safety Queensland Notice 480(T)/2009 (AA420619)

A wreck marked by a special light buoy, *Fl. Y.2-5s*, exists in position 16° 41'.88 S 145° 57'.19 E.

Mariners are advised to navigate with caution in the area.

**Chart temporarily affected - Aus 830 – AX 6027S - AU417145****969(T)/2009 AUSTRALIA - QUEENSLAND - Weipa - Dredging operations**

Date - Until 20 September 2009

Maritime Safety Queensland Notice 526(T)/2009 (AA421760)

The dredge *Brisbane*, and support vessels *Pacific Conquest* and *Norfolk* will be conducting dredging operations in the Port of Weipa between 6 August and 19 September 2009.

Weipa harbour can be contacted on VHF Ch 16 for further information.

Mariners are advised to navigate with caution in the area.

**Chart temporarily affected - Aus 4 - AU5XX4P1****970(T)/2009 AUSTRALIA - QUEENSLAND - Karumba - Dredging operations completed**

Former Notice - 910(T)/2009 is cancelled

Maritime Safety Queensland Notice 494(T)/2009 (AA419761)

Cancel this notice on receipt.

**Chart formerly affected - Aus 6**

14 August 2009

**971(T)/2009 AUSTRALIA - TIMOR SEA - Sahul Banks - FPSO off station**  
Sinopec (AA422822)

The FPSO (12° 17'.53 S 124° 19'.55 E) is off station; a riser mooring buoy exists in situ 30 metres below the sea surface.

**Chart temporarily affected - Aus 314 - Aus 319 – AX 0314F – AX 0319F – AX 4603F – AX 4721F – AX 4722F - Aus 4603 (INT 603) - Aus 4721 (INT 721) - Aus 4722 (INT 722) - AU130120 - AU313121**

**972(T)/2009 AUSTRALIA - TIMOR SEA - Osborn Passage - Light buoy recovered**

*Former Notice* - 791(T)/2009 is cancelled  
Fugro Survey Pty Ltd (AA423457)

Cancel this notice on receipt.

**Chart formerly affected - Aus 314 - Aus 319 – AX 0314F – AX 0319F - AU313124**

**973(T)/2009 AUSTRALIA - WESTERN AUSTRALIA - Dampier Archipelago - Seismic survey northwards**

*Former Notice* - 681(T)/2009 is cancelled  
*Date* - Until 30 October 2009  
Searcher Seismic Pty Ltd (AA423418)

MV *Ocean Endeavour* is conducting a survey in the area bounded by 16° 20'.0 S to 17° 45'.0 S and 114° 00'.0 E to 116° 30'.0 E.

**Chart temporarily affected - Aus 414 - Aus 415 – AX 0415F – AX 4603F – AX 4708F - Aus 4603 (INT 603) - Aus 4708 (INT 708) - AU130090**

**974(T)/2009 AUSTRALIA - WESTERN AUSTRALIA - Rankin Bank to Dampier - Scientific instrument**

*Former Notice* - 913(T)/2009 is cancelled  
*Date* - Until 28 February 2010  
MetOcean Engineers (AA423451, AA423452)

Scientific instruments exist as follows:

<i>Position (WGS84 datum)</i>	<i>Remarks</i>
19° 59'.35 S 115° 11'.03 E	lit buoy, <i>Fl(5).Y.20s</i>
20° 01'.99 S 115° 25'.37 E	lit buoy, <i>Fl(5).Y.20s</i>
20° 02'.06 S 115° 25'.24 E	5 poly-floats
20° 14'.17 S 116° 19'.07 E	lit buoy, <i>Fl(5).Y.20s</i>
20° 14'.30 S 116° 19'.02 E	5 poly-floats
20° 18'.42 S 116° 32'.94 E	lit buoy, <i>Fl(5).Y.20s</i>
20° 18'.44 S 116° 32'.84 E	5 poly-floats
20° 22'.31 S 116° 46'.57 E	lit buoy, <i>Fl(5).Y.20s</i>
20° 22'.35 S 116° 46'.47 E	5 poly-floats
20° 33'.90 S 116° 44'.03 E	5 poly-floats
20° 33'.91 S 116° 44'.06 E	lit buoy, <i>Fl(5).Y.20s</i>
20° 05'.29 S 115° 37'.49 E	lit buoy, <i>Fl(5).Y.20s</i>
20° 05'.22 S 115° 37'.66 E	5 poly-floats
20° 11'.58 S 116° 05'.26 E	lit buoy, <i>Fl(5).Y.20s</i>
20° 11'.50 S 116° 05'.37 E	5 poly-floats

**Chart temporarily affected - Aus 57 - Aus 58 - Aus 59 - Aus 327 - Aus 328 - Aus 741 - Aus 742 - AU421116 - AU5XXX58**

**975(T)/2009 AUSTRALIA - WESTERN AUSTRALIA - Fremantle - Harbour works**

Fremantle Ports 7(P)/2009 (AA421786)

Works associated with the construction of the new seawall are in progress.

The area bounded by the following positions are prohibited to all recreation vessels and is restricted to authorised vessels only:

32° 02'.41 S 115° 44'.44 E  
 32° 02'.34 S 115° 44'.41 E  
 32° 02'.38 S 115° 44'.08 E  
 32° 02'.71 S 115° 43'.83 E  
 32° 02'.81 S 115° 43'.87 E.

Mariners are advised to navigate with caution in the area.

**Chart temporarily affected - Aus 112 - Aus 113 – AX 63112 - AU5XX113****976(T)/2009 AUSTRALIA - WESTERN AUSTRALIA - Esperance - Light beacon destroyed**

Department for Planning and Infrastructure WA (AA423375, AA423376)

No 2 port lateral light beacon (33° 51'.98 S 121° 54'.45 E) has been destroyed; a special light buoy, *Fl. Y.2s*, exists in situ.**Chart temporarily affected - Aus 119 - AU5119P1****977(T)/2009 AUSTRALIA - SOUTH AUSTRALIA - Rapid Bay - Harbour works completed***Former Notice - 765(T)/2008 is cancelled*

Department for Transport, Energy and Infrastructure SA (AA423444)

Cancel this notice on receipt.

**Chart formerly affected - Aus 345 - Aus 347 - Aus 780****978(T)/2009 AUSTRALIA - TASMANIA - Georges Bay - Beacon destroyed**

Marine and Safety Tasmania Notice M96/2009 (AA421765)

No4 port lateral beacon (41° 18'.34 S 148° 18'.18 E) has been destroyed.

**Chart temporarily affected - Aus 169****979(T)/2009 AUSTRALIA - TASMANIA - Devonport - Depth information***Former Notice - 685(T)/2009 is cancelled*

Marine and Safety Tasmania Notice M100/2009 (AA423319)

Available depths as at 21 July 2009:

<i>Berth</i>	<i>Metres</i>
Entrance Channel	8.0
* Swing Basin	8.4
1E	6.5
* 2E	7.6
3E	7.8
* 1W	7.4
2W	6.3
3W	6.3
* 4W	8.6
* 5W	4.7

\* Indicates new or revised entry.

**Chart temporarily affected - Aus 164 - AU5164P1**

**980(T)/2009 AUSTRALIA - VICTORIA - Port Phillip - Altona - Dredging operations**

*Date* - Until 4 September 2009

Victorian Notice 111(T)/2009 (AA423295)

Dredging operations are in progress at Altona Boat Harbour (37° 52'.01 S 144° 50'.96 E).

The dredge will display appropriate lights and shapes.

**Chart temporarily affected - Aus 155 - AU5155P1**

**981(T)/2009 AUSTRALIA - VICTORIA - Port Phillip - Port Melbourne - Swanson Dock - Harbour works**

*Date* - Until 31 August 2009

Victorian Notice 109/2009 (AA421774)

Works associated with the removal of the mooring dolphin and walkway (37° 49'.09 S 144° 54'.90 E) are in progress.

A barge will be on site and divers may be operating in the vicinity of the works.

Further information can be obtained from Melbourne VTS on VHF Ch 12.

Mariners are advised to navigate with caution in the area.

**Chart temporarily affected - Aus 154 - AU5XX154**

**982(T)/2009 AUSTRALIA - VICTORIA - Port Phillip - Hobsons Bay - Harbour works**

*Date* - Until 28 October 2009

Victorian Notice 108(T)/2009 (AA422707)

Harbour works are in progress at Station Pier inner west (37° 50'.66 S 144° 55'.84 E) and outer west (37° 50'.77 S 144° 55'.80 E) berths.

During this period the berths will be unavailable for shipping.

**Chart temporarily affected - Aus 154 - Aus 155 - AU438144 - AU5XX154**

**983(T)/2009 AUSTRALIA - VICTORIA - Port Welshpool - Lewis Channel - Light beacon destroyed**

Victorian Notice 104(T)/2009 (AA420593)

No21 starboard lateral light beacon (38° 42'.35 S 146° 27'.17 E) has been destroyed; an isolated danger buoy, *Fl(2)* 5s exists in situ.

**Chart temporarily affected - Aus 182**

## HYDROGRAPHIC REPORTS

<i>Locality</i>	<i>Report</i>	<i>Ship/Authority</i>	<i>Observer</i>
QLD- Weipa	Wreck	HMAS <i>Melville</i>	
NT- Gove	Wreck	SV <i>Marion J</i>	DM Davidson

**NAVIGATION WARNINGS**

The following radio messages have been received during the period to 14 August 2009. Signal copies of these messages may be destroyed. It is recommended that the reprint of Navigational Warnings should be kept in a file or a book divided into areas. Cancellation should be made on receipt of signals and reprints.

Rigs on location other than those listed in the latest Section III summary are the subject of Radio Navigational Warnings. Rigs in transit will not be the subject of Warnings.

**AUSCOAST WARNING**

175 Cancelled.  
 176 Cancelled.  
 177 Cancelled.  
 178 Cancelled.  
 179 Cancelled.  
 180 Drill rig *West Atlas* in position 12° 03'.15 S 125° 15'.76 E. 2.5M clearance requested.  
 181 Cancelled.  
 182 Drill rig *Jack Bates* in position 20° 11'.70 S 113° 43'.80 E. 2.5M clearance requested.  
 183 Cancelled.  
 184 Cancelled.  
 185 Cancelled.  
 186 Cancelled.  
 187 Cancelled.  
 188 Torres Strait tide gauges telephone link temporarily altered to new number +61 (0)409 708 293.

**NAVAREA X WARNINGS**

014 Cancelled.  
 015 Cancelled.  
 016 Special purpose vessel *Tyco Durable* conducting cable laying operations in position 5° 10'.30 S 146° 30'.40 E. 2.5M clearance requested.

**Navigational warnings in force as at 140001UTC AUG 09.****Auscoast**

102 128 134 138 155 161 166 170 180 182 188

**Navarea X**

016

**Summary of mobile drilling rigs as at 140001UTC AUG 09.**

<i>Name</i>	<i>Position</i>
West Atlas	12° 03'.15 S 125° 15'.76 E
Transocean Legend	13° 24'.73 S 122° 08'.78 E
Atwood Eagle	19° 54'.48 S 115° 07'.55 E
Ensco 7500	20° 12'.90 S 114° 32'.20 E
Jack Bates	20° 11'.70 S 113° 43'.80 E
Nan Hai 6	21° 29'.20 S 113° 58'.70 E
Ocean Epoch	21° 31'.44 S 114° 06'.44 E
Ocean Patriot	38° 18'.00 S 148° 42'.40 E

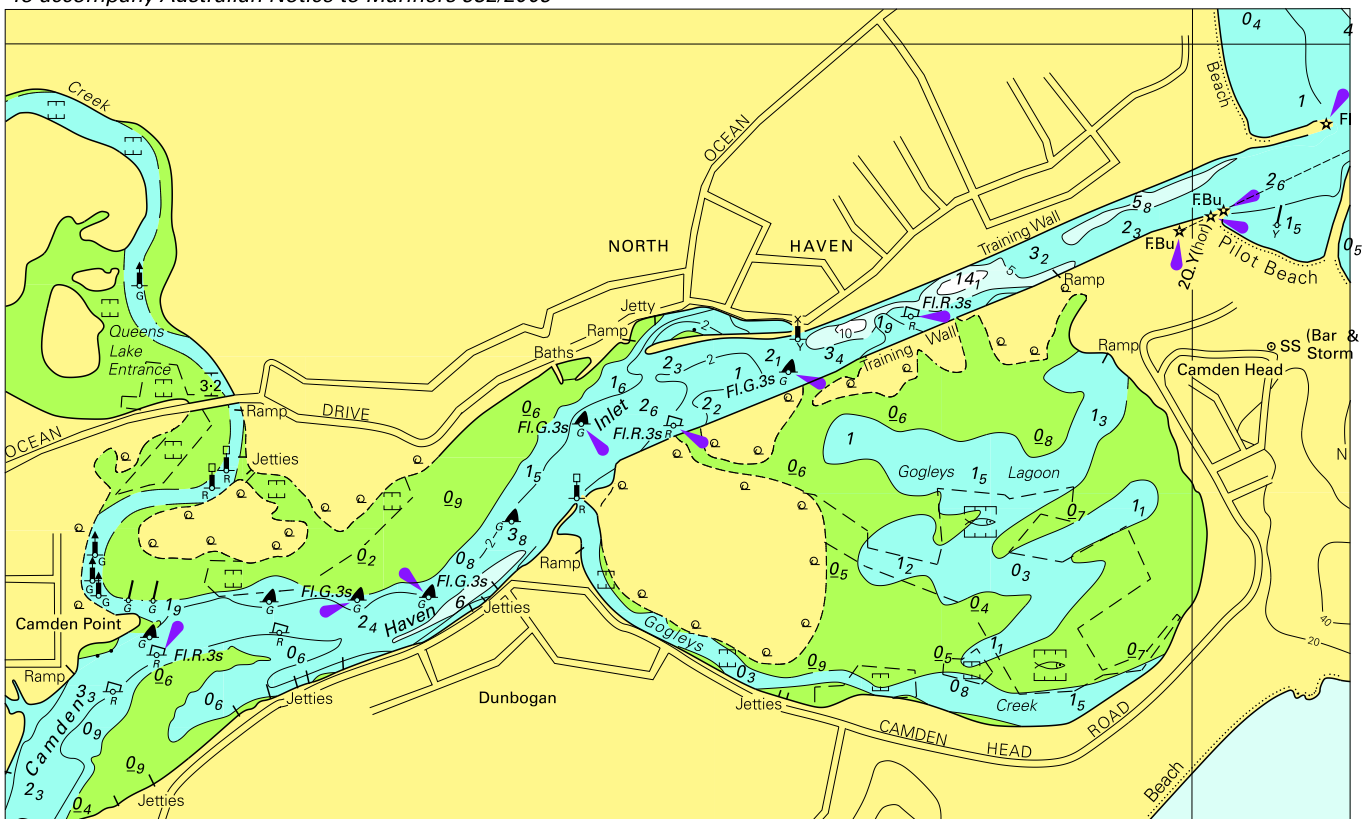
**NAVAREA XIV WARNINGS**

Nil.

**Navarea XIV warnings in force as at 140001UTC AUG 09.**

Nil.

To accompany Australian Notice to Mariners 932/2009

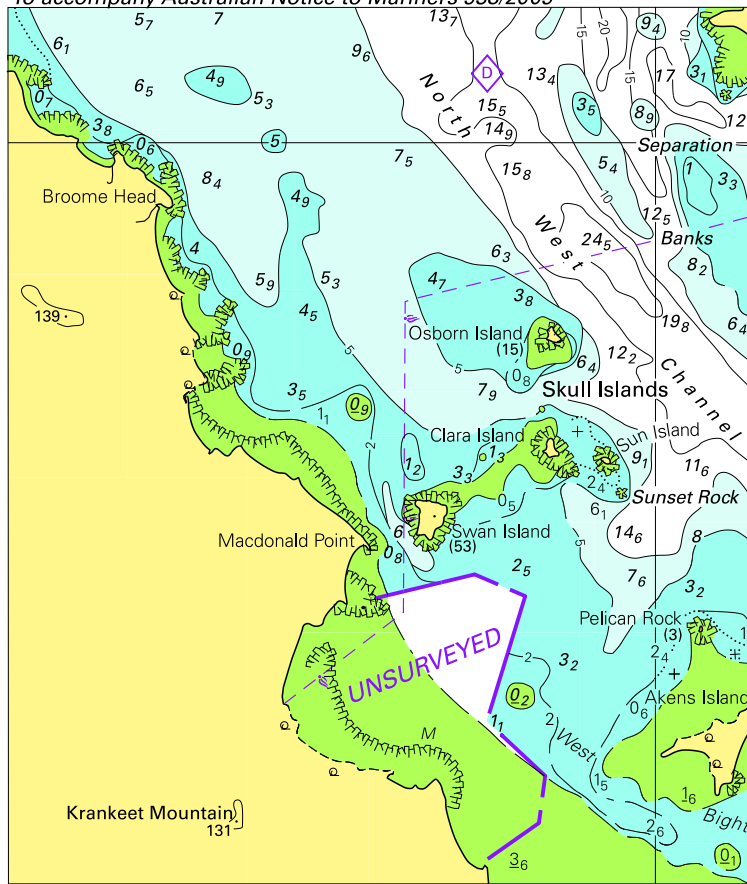


Block for chart Aus 219

© Commonwealth of Australia 2009

(177-9 x 107-1mm)

To accompany Australian Notice to Mariners 938/2009



© Commonwealth of Australia 2009

(97.8 x 115.9mm)

Block for chart Aus 822

