



Australian Notices to Mariners are the authority for correcting Australian Charts and Publications

AUSTRALIAN NOTICES TO MARINERS

Notices 854 - 929 

Published fortnightly by the Australian Hydrographic Service

Commodore R. NAIRN RAN
Hydrographer of Australia

-
- SECTIONS.**
- I. **Australian Notices to Mariners, including blocks and notes.**
 - II. **Hydrographic Reports.**
 - III. **Navigational Warnings.**

For Notices affecting Admiralty List of Lights and Fog Signals; List of Radio Signals; and Sailing Directions see **British Notices to Mariners.**

The substance of these notices should be inserted on the charts affected.

Bearings are referred to the true compass and are reckoned clockwise from North; those relating to lights are given as seen by an observer from seaward. Positions quoted in permanent notices relate to the horizontal datum for the chart(s). When preliminary or temporary notices affect multiple charts, positions will be provided in relation to only one horizontal datum and that datum will be specified. When the multiple charts do not have a common horizontal datum, mariners will be required to adjust the position(s) for those charts not on the specified datum. The range quoted for a light is its nominal range. Depths are with reference to the chart datum of each chart. Heights are above mean high water springs or mean higher high water, as appropriate.

The capital letter (P) or (T) after the number of any notice denotes a preliminary or temporary notice respectively, which are contained separately at the end of the permanent notices. A star () adjacent to the number of a notice indicates that the notice is based on original information.*

Mariners are particularly requested to notify the AUSTRALIAN HYDROGRAPHIC SERVICE, Locked Bag 8801 Wollongong, NSW 2500 (Fax 02-4223 6599, e-mail Hydro.NTM@defence.gov.au or, alternatively by filling in and submitting the [Hydrographic Notes](#) forms located on the web site – www.hydro.gov.au), immediately on the discovery of new dangers or suspected dangers to navigation. For changes or defects in aids to navigation notify AusSAR (Fax 02-6230 6868 or email rccaus@amsa.gov.au).

Copies of Australian notices are available free of charge from the Australian Hydrographic Service (AHS) website (www.hydro.gov.au) and through the eNotices (email) service (www.hydro.gov.au/enotices/enotices.htm).

Individual Notices may be copied for the purpose of inserting Notice substance on official charts and publications. Paper copies may be printed by chart agents and distributed to customers on a cost recovery basis. Participating chart agents are listed on the AHS website as providing a 'Paper Notices to Mariners' service (www.hydro.gov.au/prodserv/distributors/distributors.htm). Copies of the notices may not be sold for profit without prior written agreement.

IMPORTANT NOTICE

This edition of Notices to Mariners includes all significant information affecting AHS products which the AHS has become aware of since the last edition. All reasonable efforts have been made to ensure the accuracy and completeness of the information, including third party information, on which these updates are based. The AHS regards third parties from which it receives information as reliable, however the AHS cannot verify all such information and errors may therefore exist. The AHS does not accept liability for errors in third party information.

© Commonwealth of Australia 2009

This work is copyright. Apart from any use permitted under the Copyright Act 1968, no part may be reproduced by any process, adapted, communicated or commercially exploited without prior written permission from The Commonwealth represented by the Australian Hydrographic Service.

NUMERICAL INDEX OF NOTICES TO MARINERS

Edition No 15

Notices	Aus Chart, INT Chart, ENC Cell
854.....	Aus 51, AU302145, 302151, 402146, 403146, 4TS007, 4TS008, 4TS009, 4TS010, 4TS011, 5XXX58, 5157P3, 5645P1
855.....	Aus 610
856.....	Aus 813
857.....	Aus 220
858.....	Aus 813
859.....	Aus 230
860.....	Aus 240
861.....	Aus 260, AX 60260
862.....	Aus 830
863.....	Aus 377, 4620, INT 620, AX 60377, 4620F
864.....	Aus 4620, INT 620, AX 4620F
865.....	Aus 4
866.....	Aus 308
867.....	Aus 24, 26, 27, AX 72026
868.....	Aus 4603, 4721, INT 603, 721, AX 4603F, 4721F
869.....	Aus 40, 41
870.....	Aus 326, 740
871.....	Aus 328
872.....	Aus 116, 117, 334, 754, 755, AX 0334E, 0754E, 0755E, 66002, 70117
873.....	Aus 4070, INT 70
874.....	Aus 109, 118
875.....	Aus 119, 763
876.....	Aus 342, 343, AX 0343E
877.....	Aus 139
878.....	Aus 171, 172
879.....	Aus 167
880.....	Aus 164
881.....	Aus 163
882.....	Aus 155
883.....	Aus 154
884.....	Aus 154
885.....	Aus 181
886(T).....	Aus 193, 807, 808, AX 0808E, 60193, 67192, 70193, AU436150, 5XX193
887(T).....	Aus 197, 808, 809, AX 0808E, 0809E, 63200, AU434151
888(T).....	Aus 198, 199, AU5198X9
889(T).....	Aus 197, 200, 201, AX 63200, AU5X200E
890(T).....	Aus 230
891(T).....	Aus 230
892(T).....	Aus 238, AU5237X8
893(T).....	Aus 235, 236
894(T).....	Aus 235
895(T).....	Aus 242, AU5XX242
896(T).....	Aus 244, 245, 246, AU425151, 5244X5
897(T).....	Aus 246, 819, AU424151
898(T).....	Aus 244, 245, 819, AU424151
899(T).....	Aus 244, 245, AU5244X5
900(T).....	Aus 247, 265, AU424150
901(T).....	Aus 248, 260, 261, 367, 820, 822, 4620, 4621, INT 620, 621, AX 4620F, 4621F, 60260, 67248, 67261, AU423150, 5261P1, 5261P2, 5XX248
902(T).....	Aus 260, 367, 822, AX 60260, AU423150
903(T).....	Aus 260, 367, 822, AX 60260, AU423150, 5261P1
904(T).....	Aus 248, 260, 261, 367, 820, 822, AX 60260, 67248, 67261, AU423150, 5261P1, 5261P2, 5XX248
905(T).....	Aus 251, 823, 824, AU421149
906(T).....	Aus 263, 264, AU5262X4
907(T).....	Aus 701
908(T).....	Aus 4
909(T).....	Aus 4
910(T).....	Aus 6
911(T).....	Aus 57, 58, 741
912(T).....	Aus 57
913(T).....	Aus 57, 58, 327, 328, 741, 742, AU320115, 421115, 421116
914(T).....	Aus 64, 328, 329, 415, 416, 743, 744, AX 0415F, AU321114, 422114

915(T)	Aus 328, 329, 744, AU422114
916(T)	Aus 72, 329, 330, 745, AU323113, 324113
917(T)	Aus 122
918(T)	Aus 136, 778
919(T)	Aus 130, 137
920(T)	Aus 125, 345, 780, 781
921(T)	Aus 780
922(T)	Aus 163
923(T)	Aus 143, 155, AU438144
924(T)	Aus 154, 155
925(T)	Aus 154, 155, AU5XX154
926(T)	Aus 154, AU5XX154
927(T)	Aus 154, AU5XX154
928(T)	Aus 143, 158, AU439144
929(T)	Aus 182

NUMERICAL INDEX OF CHARTS AFFECTED

Edition No 15

Aus Chart	Notices	Aus Chart	Notices
Aus 4.....	865, 908(T), 909(T)	Aus 264	906(T)
Aus 6.....	910(T)	Aus 265	900(T)
Aus 24.....	867	Aus 308	866
Aus 26.....	867	Aus 326	870
Aus 27.....	867	Aus 327	913(T)
Aus 40.....	869	Aus 328	871, 913(T), 914(T), 915(T)
Aus 41.....	869	Aus 329	914(T), 915(T), 916(T)
Aus 51.....	854	Aus 330	916(T)
Aus 57.....	911(T), 912(T), 913(T)	Aus 334	872
Aus 58.....	911(T), 913(T)	Aus 342	876
Aus 64.....	914(T)	Aus 343	876
Aus 72.....	916(T)	Aus 345	920(T)
Aus 109.....	874	Aus 367	901(T), 902(T), 903(T), 904(T)
Aus 116.....	872	Aus 377	863
Aus 117.....	872	Aus 415	914(T)
Aus 118.....	874	Aus 416	914(T)
Aus 119.....	875	Aus 610	855
Aus 122.....	917(T)	Aus 701	907(T)
Aus 125.....	920(T)	Aus 740	870
Aus 130.....	919(T)	Aus 741	911(T), 913(T)
Aus 136.....	918(T)	Aus 742	913(T)
Aus 137.....	919(T)	Aus 743	914(T)
Aus 139.....	877	Aus 744	914(T), 915(T)
Aus 143.....	923(T), 928(T)	Aus 745	916(T)
Aus 154.....	883, 884, 924(T), 925(T), 926(T), 927(T)	Aus 754	872
Aus 155.....	882, 923(T), 924(T), 925(T)	Aus 755	872
Aus 158.....	928(T)	Aus 763	875
Aus 163.....	881, 922(T)	Aus 778	918(T)
Aus 164.....	880	Aus 780	920(T), 921(T)
Aus 167.....	879	Aus 781	920(T)
Aus 171.....	878	Aus 807	886(T)
Aus 172.....	878	Aus 808	886(T), 887(T)
Aus 181.....	885	Aus 809	887(T)
Aus 182.....	929(T)	Aus 813	856, 858
Aus 193.....	886(T)	Aus 819	897(T), 898(T)
Aus 197.....	887(T), 889(T)	Aus 820	901(T), 904(T)
Aus 198.....	888(T)	Aus 822	901(T), 902(T), 903(T), 904(T)
Aus 199.....	888(T)	Aus 823	905(T)
Aus 200.....	889(T)	Aus 824	905(T)
Aus 201.....	889(T)	Aus 830	862
Aus 220.....	857	Aus 4070	873
Aus 230.....	859, 890(T), 891(T)	Aus 4603	868
Aus 235.....	893(T), 894(T)	Aus 4620	863, 864, 901(T)
Aus 236.....	893(T)	Aus 4621	901(T)
Aus 238.....	892(T)	Aus 4721	868
Aus 240.....	860	AX 0334E	872
Aus 242.....	895(T)	AX 0343E	876
Aus 244.....	896(T), 898(T), 899(T)	AX 0415F.....	914(T)
Aus 245.....	896(T), 898(T), 899(T)	AX 0754E	872
Aus 246.....	896(T), 897(T)	AX 0755E	872
Aus 247.....	900(T)	AX 0808E	886(T), 887(T)
Aus 248.....	901(T), 904(T)	AX 0809E	887(T)
Aus 251.....	905(T)	AX 4603F.....	868
Aus 260.....	861, 901(T), 902(T), 903(T), 904(T)	AX 4620F.....	863, 864, 901(T)
Aus 261.....	901(T), 904(T)	AX 4621F.....	901(T)
Aus 263.....	906(T)	AX 4721F.....	868
		AX 60193.....	886(T)

Aus Chart	Notices	ENC Cell	Notices
AX 60260	861, 901(T), 902(T), 903(T), 904(T)	AU302145.....	854
AX 60377	863	AU302151.....	854
AX 63200	887(T), 889(T)	AU320115.....	913(T)
AX 66002	872	AU321114.....	914(T)
AX 67192	886(T)	AU323113.....	916(T)
AX 67248	901(T), 904(T)	AU324113.....	916(T)
AX 67261	901(T), 904(T)	AU402146.....	854
AX 70117	872	AU403146.....	854
AX 70193	886(T)	AU421115.....	913(T)
AX 72026	867	AU421116.....	913(T)
		AU421149.....	905(T)
		AU422114.....	914(T), 915(T)
		AU423150.....	901(T), 902(T), 903(T), 904(T)
		AU424150.....	900(T)
		AU424151.....	897(T), 898(T)
		AU425151.....	896(T)
		AU434151.....	887(T)
		AU436150.....	886(T)
		AU438144.....	923(T)
		AU439144.....	928(T)
		AU4TS007	854
		AU4TS008	854
		AU4TS009	854
		AU4TS010	854
		AU4TS011	854
		AU5157P3	854
		AU5198X9	888(T)
		AU5XX58	854
		AU5XX154.....	925(T), 926(T), 927(T)
		AU5XX193.....	886(T)
		AU5X200E.....	889(T)
		AU5237X8	892(T)
		AU5XX242.....	895(T)
		AU5244X5	896(T), 899(T)
		AU5XX248.....	901(T), 904(T)
		AU5261P1	901(T), 903(T), 904(T)
		AU5261P2	901(T), 904(T)
		AU5262X4	906(T)
		AU5645P1	854
INT Chart	Notices		
INT 70	873		
INT 603	868		
INT 620	863, 864, 901(T)		
INT 621	901(T)		
INT 721	868		

854 AUSTRALIA - Product

Australian Hydrographic Service (AA419661)

New Chart to be published shortly

<i>Chart</i>	<i>Title</i>	<i>Scale</i>	<i>Expected Publication Date</i>	<i>Expected Stock Availability</i>
Aus 51	Australia - North West Coast - Western Australia - Port of Broome	1:10 000	31 July 2009	4 September 2009

New Electronic Navigation Chart (Seafarer ENC)

<i>Cell Name</i>	<i>Released</i>	<i>Title</i>
AU302145	July 2009	Bismarck Sea - Cell 13
AU302151	July 2009	South Pacific Ocean - Cell 4
AU402146	July 2009	Bismarck Sea - North West Approach to Manus Island
AU403146	July 2009	Bismarck Sea - South West Approach to Manus Island
AU4TS007	July 2009	Torres Strait - Adolphus Channel
AU4TS008	July 2009	Torres Strait - Harrington Reef
AU4TS009	July 2009	Torres Strait - Vigilant and Great North East Channels
AU4TS010	July 2009	Torres Strait - Kirkcaldie Reef
AU4TS011	July 2009	Torres Strait - Kager Reef
AU5XXX58	July 2009	Western Australia - Port of Dampier
AU5157P3	July 2009	Port Phillip - Clifton Springs
AU5645P1	July 2009	Papua New Guinea - North Coast - Port of Basamuk

For further details refer to the AHS website at www.hydro.gov.au for new edition and new chart stock arrival information.

When placing orders with a chart agent, mariners should advise whether their order pertains to the current edition or the new edition.

855* AUSTRALIA - NEW SOUTH WALES - Lord Howe Island - Fish aggregating device

NSW Department of Primary Industries (AA402184, AA402185)

Aus 610 [591/2009]

Delete	light buoy	31° 38'.5 S	159° 06'.1 E
	light buoy	31° 28'.1 S	159° 05'.6 E

856* AUSTRALIA - NEW SOUTH WALES - Evans Head - Fish aggregating device

NSW Department of Primary Industries (AA402184, AA402185)

Aus 813 [811/2009]

Move	light buoy	29° 06'.7 S	153° 37'.3 E
	to	29° 06'.4 S	153° 36'.2 E

857* AUSTRALIA - NEW SOUTH WALES - Brunswick River - Topmark

Australian Hydrographic Service (AA412942)

Aus 220 (plan, Brunswick River Entrance) [748/2009]

Substitute	east cardinal topmark for topmark	28° 32'.07 S	153° 32'.76 E
------------	-----------------------------------	--------------	---------------

858* AUSTRALIA - NEW SOUTH WALES - Fingal Head - Depths eastwards

Geoscience Australia (DHDB 1225964)

Aus 813 [856/2009]

Insert	accompanying block	28° 16'.0 S	153° 55'.0 E
--------	--------------------	-------------	--------------

859* AUSTRALIA - QUEENSLAND - Gold Coast Seaway - Legend

Australian Hydrographic Service (AA418769)

Aus 230 [NC 22/5/2009]

Amend legend to SC3 27° 56'.79 S 153° 25'.13 E

860* AUSTRALIA - QUEENSLAND - Great Sandy Strait - Light buoy established

Maritime Safety Queensland Notice 471/2009 (AA418892)

Aus 240 [815/2009]Insert starboard lateral conical light buoy, *Fl.G.4s*, without topmark 25° 31'.911 S 152° 56'.282 E

Delete light beacon 25° 32'.0 S 152° 56'.3 E

861* AUSTRALIA - QUEENSLAND - Shoalwater Bay - Swan Island - DepthsHMAS *Leeuwin* (DHDB 1208520)**Aus 260** [696/2009]

Insert accompanying block 22° 19'.0 S 150° 12'.0 E

AX 60260 [696/2009]

Insert accompanying block 22° 19'.0 S 150° 12'.0 E

862* AUSTRALIA - QUEENSLAND - Mustard Patches - Depths

Australian Hydrographic Service (DHDB 1231126)

Aus 830 [406/2009]

Insert accompanying block 17° 07'.0 S 146° 40'.0 E

863* AUSTRALIA - TORRES STRAIT - Don Cay - Depths

Tenix LADS Corporation (DHDB 106416)

Aus 377 [821/2009]

Insert	rock which covers and uncovers	9° 34'.24 S	144° 15'.56 E
	depth, 6 ₇ m, enclosed by contour	9° 34'.65 S	144° 18'.52 E
	depth, 6 ₈ m	9° 31'.77 S	144° 19'.71 E
	underwater rock and extend danger line SE to		
	enclose	9° 35'.06 S	144° 15'.25 E

Delete	depth 9 ₁ m	9° 31'.8 S	144° 19'.5 E
	legend, centred on	9° 34'.4 S	144° 17'.5 E
	underwater rock	9° 33'.9 S	144° 15'.6 E
	underwater rock	9° 34'.6 S	144° 15'.9 E
	legend, centred on	9° 31'.5 S	144° 21'.5 E

Aus 4620 (INT 620) [820/2009]Substitute depth, 6₈m, for depth, 9₁m 9° 32'.0 S 144° 19'.9 E**AX 4620F** [820/2009]Insert depth, 6₈m, for depth, 9₁m 9° 32'.0 S 144° 19'.9 E**AX 60377** [821/2009]

Delete	legend, centred on	9° 34'.4 S	144° 17'.2 E
	legend, centred on	9° 31'.5 S	144° 21'.5 E

864* AUSTRALIA - CORAL SEA - Eastern Fields - Depths
Geoscience Australia (DHDB 953461)

Aus 4620 (INT 620) [863/2009]

Insert accompanying block 10° 07'.0 S 145° 39'.0 E

AX 4620F [863/2009]

Insert accompanying block 10° 07'.0 S 145° 39'.0 E

865* AUSTRALIA - QUEENSLAND - Weipa - Albatross Bay - Foul area
UKHO (AA402125)

Aus 4 [NE 13/2/2009]

Insert # 12° 39'.90 S 141° 45'.49 E

866* AUSTRALIA - NORTHERN TERRITORY - Elphinstone Reef - Depths
UKHO (AA412619)

Aus 308 [705/2009]

Substitute depth, 0₂fm, for depth 0₃fm 11° 13'.2 S 131° 25'.1 E
depth, 1₂fm, for depth 2₅fm 11° 12'.6 S 131° 24'.1 E

867* AUSTRALIA - NORTHERN TERRITORY - Darwin - Middle Arm - Mooring buoys established

Former Notice - 242(T)/2007 is cancelled

Darwin Port Corporation (AA417634)

Aus 24 [825/2009]

Insert special cylindrical light buoy, Q, without topmark 12° 29'.786 S 130° 48'.503 E
special cylindrical light buoy, Q, without topmark 12° 29'.495 S 130° 48'.674 E
special cylindrical light buoy, Q, without topmark 12° 29'.925 S 130° 48'.871 E
special cylindrical light buoy, Q, without topmark 12° 30'.136 S 130° 48'.696 E

Delete depth, 4₄m 12° 30'.13 S 130° 48'.69 E
depth, 6₄m 12° 29'.79 S 130° 48'.51 E

Aus 26 [825/2009]

Insert special cylindrical light buoy, Q, without topmark 12° 29'.79 S 130° 48'.50 E
special cylindrical light buoy, Q, without topmark 12° 29'.50 S 130° 48'.67 E
special cylindrical light buoy, Q, without topmark 12° 29'.93 S 130° 48'.87 E
special cylindrical light buoy, Q, without topmark 12° 30'.14 S 130° 48'.70 E
lit mooring buoy, *Fl.5s* 12° 32'.49 S 130° 50'.51 E
lit mooring buoy, *Iso.2s* 12° 32'.59 S 130° 50'.33 E
lit mooring buoy, *Fl.7s* 12° 33'.32 S 130° 51'.05 E

Delete depth, 2₉m 12° 30'.2 S 130° 48'.7 E
depth, 11₃m 12° 32'.0 S 130° 50'.6 E
depth, 6₃m 12° 29'.8 S 130° 48'.6 E
depth, 9₉m 12° 29'.5 S 130° 48'.6 E

Aus 27 [825/2009]

Insert lit mooring buoy, *LFl.5s* 12° 32'.504 S 130° 50'.365 E
lit mooring buoy, *Fl.5s* 12° 32'.486 S 130° 50'.505 E
lit mooring buoy, *Iso.2s* 12° 32'.594 S 130° 50'.327 E
lit mooring buoy, *Fl.7s* 12° 33'.322 S 130° 51'.047 E

Delete depth, 18₅m 12° 32'.47 S 130° 50'.49 E
depth, 13m 12° 32'.51 S 130° 50'.33 E
depth, 8₂m 12° 32'.60 S 130° 50'.30 E
depth, 11₄m 12° 33'.32 S 130° 51'.02 E

31 July 2009

867* AUSTRALIA - NORTHERN TERRITORY - Darwin - Middle Arm - Mooring buoys established (continued)**AX 72026 [825/2009]**

Insert	special cylindrical light buoy, Q, without topmark	12° 29'.79 S	130° 48'.50 E
	special cylindrical light buoy, Q, without topmark	12° 29'.50 S	130° 48'.67 E
	special cylindrical light buoy, Q, without topmark	12° 29'.93 S	130° 48'.87 E
	special cylindrical light buoy, Q, without topmark	12° 30'.14 S	130° 48'.70 E
	lit mooring buoy, <i>Fl.5s</i>	12° 32'.49 S	130° 50'.51 E
	lit mooring buoy, <i>Iso.2s</i>	12° 32'.59 S	130° 50'.33 E
	lit mooring buoy, <i>Fl.7s</i>	12° 33'.32 S	130° 51'.05 E
Delete	depth, 2 ₉ m	12° 30'.2 S	130° 48'.7 E
	depth, 11 ₃ m	12° 32'.0 S	130° 50'.6 E
	depth, 6 ₃ m	12° 29'.77 S	130° 48'.63 E
	depth, 9 ₉ m	12° 29'.45 S	130° 48'.62 E

868* AUSTRALIA - NORTHERN TERRITORY - Joseph Bonaparte Gulf - Gas field development

ENI Australia (AA411674 - AA411679)

Aus 4603 (INT 603) [365/2009]

Insert	platform, with <i>Racon (B)</i>	13° 53'.7 S	128° 29'.1 E
--------	---------------------------------	-------------	--------------

Aus 4721 (INT 721) [648/2009]

Insert	accompanying block	14° 08'.0 S	129° 03'.0 E
--------	--------------------	-------------	--------------

AX 4603F [365/2009]

Insert	platform, with <i>Racon (B)</i>	13° 53'.7 S	128° 29'.1 E
--------	---------------------------------	-------------	--------------

AX 4721F [648/2009]

Insert	accompanying block	14° 08'.0 S	129° 03'.0 E
--------	--------------------	-------------	--------------

869* AUSTRALIA - WESTERN AUSTRALIA - Koolan Island - Topmark

Mount Gibson Iron Limited (AA386304)

Aus 40 [NC 30/1/2009]

Insert	west cardinal topmark	16° 09'.14 S	123° 44'.85 E
--------	-----------------------	--------------	---------------

Aus 41 (plan, Koolan Island) [57/2009]

Substitute	west cardinal topmark for topmark	16° 09'.14 S	123° 44'.85 E
------------	-----------------------------------	--------------	---------------

870* AUSTRALIA - WESTERN AUSTRALIA - Depuch Island - Wrecks

Department of Maritime Archaeology WA (AA418710)

Aus 326 [650/2009]

Insert	stranded wreck	20° 37'.13 S	117° 43'.86 E
	magenta legend, <i>Historic Wks (see Note)</i> , centred on	20° 36'.6 S	117° 44'.5 E
	accompanying note	20° 32'.0 S	119° 0'.0 E

Aus 740 [828/2009]

Insert	stranded wreck with magenta legend, <i>Historic Wk (see Note)</i>	20° 37'.13 S	117° 43'.85 E
	magenta legend, <i>Historic Wk (see Note)</i> , centred on	20° 36'.3 S	117° 44'.5 E
	accompanying note	20° 45'.8 S	117° 11'.7 E

Aus 740 (plan, Depuch Island Anchorage)

Insert	magenta legend, <i>Historic Wk (see Note)</i> , centred on	20° 36'.30 S	117° 44'.15 E
	stranded wreck with magenta legend, <i>Historic Wk (see Note)</i>	20° 37'.13 S	117° 43'.85 E

871* AUSTRALIA - WESTERN AUSTRALIA - Rankin Bank - Depth southwards
 Australian Hydrographic Service (AA419660),

Aus 328 [829/2009]

On certain copies only

Delete depth, 9m, and enclosing contour 20° 01'.8 S 115° 38'.7 E

872* AUSTRALIA - WESTERN AUSTRALIA - Warnbro Sound - Historic wreck
 Department of Maritime Archaeology WA (AA418710)

Aus 116 (plan, Warnbro Sound) [308/2009]

Substitute magenta legend, *Historic Wk* (see Note), for legend Wk 32° 16'.95 S 115° 37'.65 E

Aus 117 [654/2009]

Substitute magenta legend, *Historic Wk* (see Note), for legend Wk 32° 16'.91 S 115° 37'.66 E

Aus 334 [253/2009]

Substitute magenta legend, *Historic Wk*, for legend Wk 32° 17'.0 S 115° 37'.0 E

Aus 754 [606/2009]

Substitute magenta legend, *Historic Wk* (see Note), for legend Wk 32° 16'.9 S 115° 38'.3 E

Aus 755 [NE 16/1/2009]

Substitute magenta legend, *Historic Wk* (see Note), for legend Wk 32° 17'.0 S 115° 37'.4 E

AX 0334E [253/2009]

Substitute magenta legend, *Historic Wk*, for legend Wk 32° 17'.0 S 115° 37'.0 E

AX 0754E [606/2009]

Substitute magenta legend, *Historic Wk* (see Note), for legend Wk 32° 16'.9 S 115° 38'.3 E

AX 0755E [1286/2008]

Substitute magenta legend, *Historic Wk* (see Note), for legend Wk 32° 17'.0 S 115° 37'.4 E

AX 66002 [606/2009]

Substitute magenta legend, *Historic Wk* (see Note), for legend Wk 32° 16'.9 S 115° 38'.3 E

AX 70117 [654/2009]

Substitute magenta legend, *Historic Wk* (see Note), for legend Wk 32° 16'.91 S 115° 37'.66 E

873 AUSTRALIA - Indian Ocean - Price Edward Islands - Depths

BA Notice 28/3529/2009 (AA417635)

Aus 4070 (INT 70) [158/2009]

Insert	depth, 44m, enclosed by danger circle with legend (2008)	48° 22'.0 S	44° 09'.0 E
	depth, 417m, enclosed by danger circle with legend (2008)	42° 39'.0 S	42° 41'.0 E
	depth, 576m, enclosed by danger circle with legend (2008)	43° 13'.0 S	41° 55'.0 E
	depth, 359m, enclosed by danger circle with legend (2008)	42° 46'.0 S	38° 54'.0 E
	depth, 536m, enclosed by danger circle with legend (2008)	46° 59'.0 S	33° 51'.0 E
Delete	depth, 585m, and enclosing contours	42° 44'.0 S	42° 37'.0 E
	depth, 444m, and enclosing contour	43° 47'.0 S	39° 00'.0 E
	depth, 5243m	46° 57'.0 S	33° 32'.0 E
	depth, 4380m	48° 30'.0 S	43° 40'.0 E

874* AUSTRALIA - WESTERN AUSTRALIA - Albany - Historic wreck

Department of Maritime Archaeology WA (AA418710)

Aus 109 [310/2009]

Insert	magenta legend, <i>Historic Wk (see Note)</i>	35° 02'.22 S	117° 51'.77 E
	magenta legend, <i>Historic Wk (see Note)</i>	35° 01'.95 S	117° 52'.10 E
	magenta legend, <i>Historic Wk (see Note)</i>	35° 02'.06 S	117° 52'.42 E
	accompanying note	35° 04'.5 S	117° 51'.1 E

Aus 118 [1026/2008]

Insert	magenta legend, <i>Historic Wks (see Note)</i>	35° 02'.14 S	117° 52'.10 E
	accompanying note	34° 58'.8 S	117° 44'.8 E

875* AUSTRALIA - WESTERN AUSTRALIA - Middle Island - Historic wreck

Department of Maritime Archaeology WA (AA418710)

Aus 119 [371/2009]

Insert	accompanying note	33° 50'.0 S	121° 37'.5 E
--------	-------------------	-------------	--------------

Aus 119 (plan, Approaches to Goose Island Bay)

Insert	magenta legend, <i>Historic Wk (see Note)</i>	34° 05'.5 S	123° 12'.6 E
--------	---	-------------	--------------

Aus 763 [NE 30/1/2009]

Insert	magenta legend, <i>Historic Wk (see Note)</i>	34° 05'.4 S	123° 12'.6 E
--------	---	-------------	--------------

876* AUSTRALIA - SOUTH AUSTRALIA - Great Australian Bight - Rocky Island - Depth northwestwards

Geoscience Australia (AA418911)

Aus 342 [372/2009]

Insert	depth, 73m, enclosed by contour	34° 43'.68 S	134° 24'.87 E
--------	---------------------------------	--------------	---------------

Aus 343 [373/2009]

Insert	depth, 73m, enclosed by contour	34° 43'.75 S	134° 24'.79 E
--------	---------------------------------	--------------	---------------

AX 0343E [373/2009]

Insert	depth, 73m, enclosed by contour	34° 43'.75 S	134° 24'.79 E
--------	---------------------------------	--------------	---------------

877* AUSTRALIA - SOUTH AUSTRALIA - Macdonnell Sound to Ardrossan - ZOC diagram; depths
Australian Hydrographic Service (AA418634)

Aus 139 (plan, Macdonnell Sound) [588/2008]

Insert	accompanying block	34° 55'.6 S	137° 51'.8 E
--------	--------------------	-------------	--------------

Aus 139 (plan, Ardrossan Harbor Approaches)

Insert	accompanying block	34° 21'.5 S	138° 02'.0 E
--------	--------------------	-------------	--------------

Substitute	accompanying ZOC diagram	34° 22'.3 S	137° 53'.9 E
------------	--------------------------	-------------	--------------

878* AUSTRALIA - TASMANIA - River Derwent - Hobart - Prohibited anchorage areas

Tasports (AA419596)

Aus 171 [492/2009]

Insert	anchoring prohibited area with radius 560m	42° 52'.95 S	147° 21'.30 E
--------	--	--------------	---------------

Aus 172 [1188/2008]

Insert	anchoring prohibited area with radius 560m and magenta legend <i>Channel Escape Area (see Note)</i> , centred on	42° 52'.95 S	147° 21'.30 E
	anchoring prohibited area with radius 560m and magenta legend <i>Channel Escape Area (see Note)</i> , centred on	42° 51'.47 S	147° 20'.27 E
	accompanying note	42° 53'.2 S	147° 18'.6 E

879* AUSTRALIA - TASMANIA - Port Dalrymple - Middle Channel - Prohibited anchorage area

Tasports (AA419596)

Aus 167 [374/2009]

Insert	anchoring prohibited area with radius 560m and magenta legend <i>Channel Escape Area (see Note)</i> , centred on	41° 03'.06 S	146° 46'.00 E
	accompanying note	41° 06'.9 S	146° 44'.6 E

880* AUSTRALIA - TASMANIA - Devonport - Precautionary area

Tasports (AA419596)

Aus 164 [610/2009]

Insert	precautionary area with magenta legend <i>Channel Escape Area (see Note)</i>	41° 08'.68 S	146° 22'.09 E
	accompanying note	41° 13'.3 S	146° 18'.8 E

881* AUSTRALIA - TASMANIA - Burnie - Emu Bay - Precautionary area

Tasports (AA419596)

Aus 163 [611/2009]

Insert	precautionary area with magenta legend <i>Channel Escape Area (see Note)</i>	41° 02'.81 S	145° 56'.00 E
--------	--	--------------	---------------

Aus 163 (plan, Port of Burnie)

Insert	precautionary area with magenta legend <i>Channel Escape Area (see Note)</i>	41° 02'.81 S	145° 56'.00 E
	accompanying note	41° 03'.95 S	145° 54'.75 E

882* AUSTRALIA - VICTORIA - Port Phillip - Werribee River - Depths; coastline
 Australian Hydrographic Service (AA418529)

Aus 155 [657/2009]

Insert	accompanying block	38° 00'.0 S	144° 42'.0 E
--------	--------------------	-------------	--------------

883* AUSTRALIA - VICTORIA - Port Phillip - Port Melbourne - River Yarra - Light established
 Victorian Notice 87/2009 (AA413983)

Aus 154 [552/2009]

Insert	light, <i>F.G & Fl.G.2s No49</i>	37° 49'.273 S	144° 54'.762 E
--------	--------------------------------------	---------------	----------------

884* AUSTRALIA - VICTORIA - Port Phillip - Hobsons Bay - Lights
 Port of Melbourne Corporation (AA418219)

Aus 154 [883/2009]

Insert	light, <i>VQ(4)Y.4s</i>	37° 50'.708 S	144° 55'.549 E
	light, <i>VQ(4)Y.4s</i>	37° 50'.700 S	144° 55'.517 E

885* AUSTRALIA - VICTORIA - Corner Inlet - Bentley Point - Light beacon established
Former Notice - 667(T)/2007 is cancelled
 Gippsland Ports (AA418200)

Aus 181 [835/2009]

Insert	starboard lateral light beacon, <i>Fl.G.3s 7M</i> , with topmark	38° 46'.605 S	146° 29'.443 E
Delete	sector light	38° 46'.5 S	146° 29'.6 E

886(T)/2009 AUSTRALIA - NEW SOUTH WALES - Jervis Bay - Bowen Island - Scientific instrument recovered
Former Notice - 614(T)/2009 is cancelled

Cancel this notice on receipt.

Chart formerly affected – Aus 193 – Aus 807 – Aus 808 – AX 0808E – AX 60193 – AX 67192 – AX 70193 - AU436150 - AU5XX193

887(T)/2009 AUSTRALIA - NEW SOUTH WALES - Cape Baily to Ben Buckler - Scientific instruments

Former Notice - 1292(T)/2008 is cancelled

Date - Until 30 June 2011

Sydney Institute of Marine Science (AA375220, AA420046)

Subsea moorings exist in positions (WGS84 datum) as follows:

33° 53'.76 S 151° 17'.30 E
 33° 53'.99 S 151° 17'.30 E
 33° 54'.23 S 151° 17'.72 E
 33° 54'.51 S 151° 18'.14 E
 33° 54'.76 S 151° 18'.56 E
 33° 55'.02 S 151° 19'.01 E
 33° 55'.28 S 151° 19'.45 E
 33° 55'.54 S 151° 19'.89 E
 33° 55'.80 S 151° 20'.31 E
 33° 56'.06 S 151° 21'.17 E
 33° 56'.32 S 151° 22'.61 E
 33° 56'.60 S 151° 22'.06 E
 33° 56'.85 S 151° 22'.50 E
 33° 57'.12 S 151° 22'.95 E
 33° 57'.40 S 151° 23'.39 E
 33° 57'.91 S 151° 24'.25 E
 33° 58'.65 S 151° 23'.84 E
 33° 58'.20 S 151° 24'.64 E
 33° 58'.49 S 151° 25'.08 E
 33° 58'.77 S 151° 25'.57 E
 33° 59'.08 S 151° 26'.06 E
 33° 59'.33 S 151° 26'.47 E
 34° 59'.97 S 151° 27'.33 E
 34° 00'.21 S 151° 27'.85 E
 34° 00'.48 S 151° 28'.27 E
 34° 00'.77 S 151° 28'.74 E
 34° 01'.33 S 151° 29'.16 E
 34° 01'.31 S 151° 29'.63 E
 34° 01'.59 S 151° 30'.08 E

Chart temporarily affected – Aus 197 – Aus 808 – Aus 809 – AX 0808E – AX 0809E – AX 63200 - AU434151

888(T)/2009 AUSTRALIA - NEW SOUTH WALES - Botany Bay - Scientific instrument

Cardno Lawson Treloar (AA419709)

A special light buoy, *Fl(5)Y.20s*, exists in position 33° 59'.32 S 151° 11'.32 E.

Chart temporarily affected – Aus 198 – Aus 199 - AU5198X9

889(T)/2009 AUSTRALIA - NEW SOUTH WALES - Manly - Scientific instrument recovered
Former Notice - 802(T)/2008 is cancelled
Sydney Institute of Marine Science (AA353372, AA353373)

Cancel this notice on receipt.

Chart formerly affected – Aus 197 – Aus 200 – Aus 201 – AX 63200 - AU5X200E

890(T)/2009 AUSTRALIA - QUEENSLAND - Southport - Dredging operations completed
Former Notice - 775(T)/2009 is cancelled
Maritime Safety Queensland Notice 295(T)/2009 (AA405778)

Cancel this notice on receipt.

Chart formerly affected – Aus 230

891(T)/2009 AUSTRALIA - QUEENSLAND - Southport - South Channel - Dredging operations completed
Former Notice - 776(T)/2009 is cancelled
Maritime Safety Queensland Notice 104(T)/2009 (AA387350)

Cancel this notice on receipt.

Chart formerly affected – Aus 230

892(T)/2009 AUSTRALIA - QUEENSLAND - Brisbane River - Lytton Reach - Diving operations completed
Former Notice - 778(T)/2009 is cancelled
Maritime Safety Queensland Notice 407(T)/2009 (AA414166)

Cancel this notice on receipt.

Chart formerly affected – Aus 238 - AU5237X8

893(T)/2009 AUSTRALIA - QUEENSLAND - Bribie Island - Pumicestone Channel - Harbour works completed
Former Notice - 501(T)/2009 is cancelled
Maritime Safety Queensland Notice 236(T)/2009 (AA400102)

Cancel this notice on receipt.

Chart formerly affected – Aus 235 – Aus 236

894(T)/2009 AUSTRALIA - QUEENSLAND - Pumicestone Channel - Harbour works completed
Former Notice - 502(T)/2009 is cancelled
Maritime Safety Queensland Notice 217(T)/2009 (AA399741)

Cancel this notice on receipt.

Chart formerly affected – Aus 235

895(T)/2009 AUSTRALIA - QUEENSLAND - Bundaberg - Light buoys re-established*Former Notice - 841(T)/2009 is cancelled*

Maritime Safety Queensland Notice 483/2009 (AA420333)

Cancel this notice on receipt.

Chart formerly affected – Aus 242 - AU5XX242**896(T)/2009 AUSTRALIA - QUEENSLAND - Gladstone - Light buoys***Former Notice - 842(T)/2009 is cancelled**Date - Until 30 September 2009*

Maritime Safety Queensland 507(T)/2009 (AA420254)

Special light buoys, Q. Y, exist in positions:

C1 23° 47'.48 S 151° 10'.73 E
 C2 23° 47'.26 S 151° 12'.00 E
 C3 23° 46'.02 S 151° 09'.54 E
 C4-1 23° 48'.46 S 151° 10'.25 E
 P14 23° 45'.89 S 151° 10'.80 E
 P2 23° 48'.51 S 151° 12'.95 E
 P7 23° 52'.89 S 151° 22'.65 E
 P3 23° 48'.63 S 151° 15'.42 E
 QE1 23° 46'.64 S 151° 09'.30 E
 R5 24° 00'.83 S 151° 30'.55 E
 OF 23° 47'.47 S 151° 10'.76 E

Chart temporarily affected – Aus 244 – Aus 245 – Aus 246 - AU425151 - AU5244X5**897(T)/2009 AUSTRALIA - QUEENSLAND - Gladstone - South Channel - Light buoy established**

Maritime Safety Queensland 497(T)/2009 (AA419760)

A special light buoy, *Fl(5)Y.20s*, exists in position 23° 53'.77 S 151° 30'.25 E.**Chart temporarily affected – Aus 246 – Aus 819 - AU424151****898(T)/2009 AUSTRALIA - QUEENSLAND - Gladstone - Scientific instruments***Former Notice - 622(T)/2009 is cancelled**Date - Until 1 November 2009*

Maritime Safety Queensland Notices 474(T)/2009, 475(T)/2009 (AA418906, AA418908)

Scientific instruments marked by special spar light buoys, *Fl.Y.5s*, exist in positions:

23° 43'.70 S 151° 09'.17 E
 23° 44'.91 S 151° 09'.96 E
 23° 45'.01 S 151° 09'.98 E
 23° 46'.48 S 151° 11'.19 E
 23° 46'.72 S 151° 10'.60 E
 23° 46'.77 S 151° 10'.59 E
 23° 46'.78 S 151° 18'.50 E
 23° 46'.80 S 151° 10'.18 E
 23° 46'.96 S 151° 11'.76 E
 23° 46'.99 S 151° 11'.76 E
 23° 47'.67 S 151° 10'.83 E
 23° 47'.87 S 151° 12'.02 E

An unmarked scientific instrument exists in position 23° 47'.91 S 151° 12'.68 E.

Chart temporarily affected – Aus 244 – Aus 245 – Aus 819 - AU424151

899(T)/2009 AUSTRALIA - QUEENSLAND - Gladstone - Drilling operations completed*Former Notice - 559(T)/2009 is cancelled*

Maritime Safety Queensland Notice 267(T)/2009 (AA402314, AA402885)

Cancel this notice on receipt.

Chart formerly affected – Aus 244 – Aus 245 - AU5244X5**900(T)/2009 AUSTRALIA - QUEENSLAND - Keppel Bay - Mud Island to Centre Bank - Scientific instruments***Former Notice - 508(T)/2009 is cancelled*

Maritime Safety Queensland Notice 476(T)/2009 (AA418907)

Scientific instruments marked by special conical light buoys, *Fl.Y.5s*, exist in positions:

23° 32'.05 S 150° 51'.00 E

23° 30'.69 S 150° 56'.33 E

23° 26'.14 S 150° 57'.34 E

Chart temporarily affected – Aus 247 – Aus 265 - AU424150**901(T)/2009 AUSTRALIA - QUEENSLAND - Shoalwater Bay - Military exercise completed***Former Notice - 782(T)/2009 is cancelled*

Department of Defence (AA415208)

Cancel this notice on receipt.

Chart formerly affected – Aus 248 – Aus 260 – Aus 261 – Aus 367 – Aus 820 – Aus 822 – Aus 4620 (INT 620) – Aus 4621 (INT 621) – AX 4620F – AX 4621F – AX 60260 – AX 67248 – AX 67261 – AU423150 - AU5261P1 - AU5261P2 - AU5XX248**902(T)/2009 AUSTRALIA - QUEENSLAND - Shoalwater Bay - Live firing completed***Former Notice - 783(T)/2009 is cancelled*

Maritime Safety Queensland Notice 405(T)/2009 (AA414162)

Cancel this notice on receipt.

Chart formerly affected – Aus 260 – Aus 367 – Aus 822 – AX 60260 - AU423150**903(T)/2009 AUSTRALIA - QUEENSLAND - Shoalwater Bay - Live firing completed***Former Notice - 626(T)/2009 is cancelled*

Maritime Safety Queensland Notice 307(T)/2009 (AA406346)

Cancel this notice on receipt.

Chart formerly affected – Aus 260 – Aus 367 – Aus 822 – AX 60260 - AU423150 - AU5261P1**904(T)/2009 AUSTRALIA - QUEENSLAND - Shoalwater Bay - Live firing completed***Former Notice - 722(T)/2009 is cancelled*

Maritime Safety Queensland Notice 309(T)/2009 (AA406347)

Cancel this notice on receipt.

Chart formerly affected – Aus 248 – Aus 260 – Aus 261 – Aus 367 – Aus 820 – Aus 822 – AX 60260 – AX 67248 – AX 67261 - AU423150 - AU5261P1 - AU5261P2 - AU5XX248

905(T)/2009 AUSTRALIA - QUEENSLAND - Heskett Rock - Light beacon re-established

Former Notice - 442(T)/2009 is cancelled
Maritime Safety Queensland 490/2009 (AA419764)

Cancel this notice on receipt.

Chart formerly affected – Aus 251 – Aus 823 – Aus 824 - AU421149**906(T)/2009 AUSTRALIA - QUEENSLAND - Cairns - Smiths Creek - Dredging operations**

Former Notice - 725(T)/2009 is cancelled
Date - Until 31 August 2009
Maritime Safety Queensland Notice 508(T)/2009 (AA420295)

Dredging operations are in progress at Commercial Fishermans Base No1, between jetty C (16° 56'.45 S 145° 46'.60 E) and D (16° 56'.49 S 145° 46'.56 E).

A special light buoy, Q, exists in the vicinity of position 16° 56'.52 S 145° 46'.60 E.

Mariners are advised that entry to this area is prohibited during this period.

Chart temporarily affected – Aus 263 – Aus 264 - AU5262X4**907(T)/2009 AUSTRALIA - QUEENSLAND - Port Musgrave - Scientific instrument recovered**

Former Notice - 73(T)/2008 is cancelled
Maritime Safety Queensland (AA419595)

Cancel this notice on receipt.

Chart formerly affected – Aus 701**908(T)/2009 AUSTRALIA - QUEENSLAND - Weipa - Light buoy re-established**

Former Notice - 670(T)/2008 is cancelled
Maritime Safety Queensland (AA419595)

Cancel this notice on receipt.

Chart formerly affected – Aus 4**909(T)/2009 AUSTRALIA - QUEENSLAND - Weipa - Light beacon re-established**

Former Notice - 936(T)/2007 is cancelled
Maritime Safety Queensland (AA419595)

Cancel this notice on receipt.

Chart formerly affected – Aus 4

910(T)/2009 AUSTRALIA - QUEENSLAND - Karumba - Dredging operations

Date - Until 8 August 2009

Maritime Safety Queensland Notice 494(T)/2009 (AA419761)

The dredge *Pacific Conquest* is conducting dredging operations in Karumba Entrance Channel between the hours of 0600 and 1800.

The dredge will display appropriate lights and shapes; and monitor VHF Ch 14 and 16.

Chart temporarily affected – Aus 6

911(T)/2009 AUSTRALIA - WESTERN AUSTRALIA - Dampier - Obstruction

Date - Until 31 January 2010

Port of Dampier Notice 22/2009 (AA420011)

An obstruction is marked by two special light buoys, Q, in positions:

20° 32'.00 S 116° 44'.50 E

20° 31'.51 S 116° 45'.03 E

Chart temporarily affected – Aus 57 – Aus 58 – Aus 741

912(T)/2009 AUSTRALIA - WESTERN AUSTRALIA - Dampier - Goodwyn Island - Buoy removed

Former Notice - 630(T)/2009 is cancelled

Dampier Port Authority Notice 16/2009 (AA406451)

Cancel this notice on receipt.

Chart formerly affected – Aus 57

913(T)/2009 AUSTRALIA - WESTERN AUSTRALIA - Rankin Bank to Dampier - Scientific instrument

Former Notice - 225(T)/2009 is cancelled

Date - Until 28 February 2010

MetOcean Engineers (AA419704, AA419705)

Scientific instruments exist as follows:

Position (WGS84 datum)	Remarks
19° 59'.35 S 115° 11'.03 E	lit buoy, Fl. Y.20s
20° 01'.99 S 115° 25'.37 E	lit buoy, Fl. Y.20s
20° 02'.06 S 115° 25'.24 E	5 poly-floats
20° 14'.17 S 116° 19'.07 E	lit buoy, Fl. Y.20s
20° 14'.30 S 116° 19'.02 E	5 poly-floats
20° 18'.42 S 116° 32'.94 E	lit buoy, Fl. Y.20s
20° 18'.44 S 116° 32'.84 E	5 poly-floats
20° 22'.31 S 116° 46'.57 E	lit buoy, Fl. Y.20s
20° 22'.35 S 116° 46'.47 E	5 poly-floats
20° 33'.90 S 116° 44'.03 E	5 poly-floats
20° 33'.91 S 116° 44'.06 E	lit buoy, Fl. Y.20s

Chart temporarily affected – Aus 57 – Aus 58 – Aus 327 – Aus 328 – Aus 741 – Aus 742 - AU320115 - AU421115 - AU421116

914(T)/2009 AUSTRALIA - WESTERN AUSTRALIA - North West Cape - Scientific instruments
Woods Hole Group (AA418777)

Bottom mounted scientific instruments exist in the following positions:

21° 39'.00 S 114° 59'.82 E
21° 26'.64 S 114° 51'.96 E

Scientific instruments exist 30m below the surface in the following positions:

19° 51'.30 S 113° 10'.96 E
20° 27'.90 S 113° 48'.90 E
20° 56'.34 S 114° 18'.06 E
20° 59'.88 S 114° 22'.68 E
21° 07'.02 S 114° 30'.96 E
21° 17'.22 S 114° 41'.34 E

Chart temporarily affected – Aus 64 – Aus 328 – Aus 329 – Aus 415 – Aus 416 – Aus 743 – Aus 744 – AX 0415F - AU321114 - AU422114

915(T)/2009 AUSTRALIA - WESTERN AUSTRALIA - Muiron Islands - Oil field development northwestwards

Former Notice - 632(T)/2009 is cancelled

Date - Until 10 October 2009

BHP Billiton (AA420358)

Drill rig *Ocean Epoch* and support vessels *Jascon 25* and *Toisa Proteus* are undertaking drilling operations for the Pyrenees oil field.

An FPSO will be established in position 21° 32'.47 S 114° 06'.98 E (WGS84 datum). The FPSO mooring buoy is submerged 3 metres below the surface and is marked by a light buoy, *Mo(U)15s*.

Subsea production wells will be established as follows:

Ravensworth North	21° 31'.80 S 114° 05'.13 E
Ravensworth South	21° 32'.31 S 114° 05'.09 E
Crosby North	21° 31'.72 S 114° 06'.08 E
Crosby South	21° 32'.69 S 114° 05'.69 E
Stickle	21° 31'.36 S 114° 06'.59 E
Macedon	21° 34'.03 S 114° 10'.30 E
Ravensworth WI	21° 30'.16 S 114° 05'.72 E
Crosby WI	21° 29'.96 S 114° 07'.61 E
Stickle WI	21° 30'.15 S 114° 08'.69 E

Mariners are advised to navigate with caution in the vicinity.

Chart temporarily affected – Aus 328 – Aus 329 – Aus 744 - AU422114

916(T)/2009 AUSTRALIA - WESTERN AUSTRALIA - North West Cape to Point Maud - Scientific instruments recovered

Former Notice - 1156(T)/2008 is cancelled

Sydney Institute of Marine Science (AA367078, AA367079, AA367220)

Cancel this notice on receipt.

Chart formerly affected – Aus 72 – Aus 329 – Aus 330 – Aus 745 - AU323113 - AU324113

917(T)/2009 AUSTRALIA - SOUTH AUSTRALIA - Thevenard - Daphne Rock - Beacon destroyed

Department for Transport, Energy and Infrastructure SA Notice 37/2009 (AA418775)

The starboard lateral beacon (32° 09'.54 S 133° 38'.48 E) has been destroyed.

Chart temporarily affected – Aus 122

918(T)/2009 AUSTRALIA - SOUTH AUSTRALIA - Port Bonython - Light buoy unlit
 Department for Transport, Energy and Infrastructure SA Notice 35/2009 (AA418900)

The starboard lateral light buoy, *Fl.G.3s*, (33° 02'.30 S 137° 45'.92 E) is unlit.

Chart temporarily affected – Aus 136 – Aus 778

919(T)/2009 AUSTRALIA - SOUTH AUSTRALIA - Semaphore South - Harbour works completed
Former Notice - 457(T)/2009 is cancelled
 Department for Transport, Energy and Infrastructure SA Notice 19/2009 (AA398100)

Cancel this notice on receipt.

Chart formerly affected – Aus 130 – Aus 137

920(T)/2009 AUSTRALIA - SOUTH AUSTRALIA - Holdfast Bay - Scientific instruments recovered
Former Notice - 831(T)/2008 is cancelled
 Sydney Institute of Marine Science (AA353372, AA353373)

Cancel this notice on receipt.

Chart formerly affected – Aus 125 – Aus 345 – Aus 780 – Aus 781

921(T)/2009 AUSTRALIA - SOUTH AUSTRALIA - Port Willunga - Light buoy off station
 Department of Environment and Heritage SA (AA420053)

The light buoy, *Fl.5s* (35° 15'.13 S 138° 27'.58 E (WGS84 datum)), is off station.

Chart temporarily affected – Aus 780

922(T)/2009 AUSTRALIA - TASMANIA - Burnie - Depth information
Former Notice - 686(T)/2009 is cancelled
 Tasports (AA420205)

Available depths as at 27 July 2009:

<i>Berth</i>	<i>Metres</i>	<i>Remarks</i>
* No 4 Berth	7.5	
* No 5 Berth	10.8	9.2m first 75m outer end, 10.8m for the next 200m
No 6 Berth	10.0	
* No 7 Berth	10.6	10.0m first 30m outer end, 10.2m for the next 35m, 10.6m for the next 205m

* Indicates new or revised entry.

Chart temporarily affected – Aus 163

923(T)/2009 AUSTRALIA - VICTORIA - Port Phillip - Werribee River - Dredging operations completed
Former Notice - 739(T)/2009 is cancelled
 Victorian Notice 77(T)/2009 (AA411747)

Cancel this notice on receipt.

Chart formerly affected – Aus 143 – Aus 155 - AU438144

924(T)/2009 AUSTRALIA - VICTORIA - Port Phillip - Port Melbourne - Dredging operations completed*Former Notice - 475(T)/2008 is cancelled*

Victorian Notice 61(T)/2008 (AA330035)

Cancel this notice on receipt.

Chart formerly affected – Aus 154 – Aus 155**925(T)/2009 AUSTRALIA - VICTORIA - Port Phillip - Williamstown - Harbour works***Date - Until 24 August 2009*

Victorian Notice 102(T)/2009 (AA419767)

Harbour works are in progress at the Royal Yacht Club (37° 51'.54 S 144° 54'.55 E).

A barge and associated vessels displaying the appropriate lights and shapes will be onsite.

Mariners are advised to navigate with caution in the area.

Chart temporarily affected – Aus 154 – Aus 155 - AU5XX154**926(T)/2009 AUSTRALIA - VICTORIA - Port Phillip - Port Melbourne - Swanson Dock - Harbour works***Date - Until 30 June 2010*

Victorian Notice 101(T)/2009 (AA419769)

A barge and associated vessels will be conducting harbour works (37° 48'.85 S 144° 54'.81 E).

Vessels manoeuvring in the dock must maintain a minimum clearance of 50m from the work units. Vessels berthing or unberthing may approach to within 20m of the work units.

Further information can be obtained from Melbourne VTS on VHF Ch 12.

Mariners are advised to navigate with caution in the area.

Chart temporarily affected – Aus 154 - AU5XX154**927(T)/2009 AUSTRALIA - VICTORIA - Port Phillip - Hobsons Bay - Princes Pier - Light buoy***Former Notice - 992(T)/2008 is cancelled*

Port of Melbourne Corporation (AA418219)

A special light buoy, *Fl(2)Y.4s*, exists in position 37° 50'.70 S 144° 55'.36 E.**Chart temporarily affected – Aus 154 - AU5XX154****928(T)/2009 AUSTRALIA - VICTORIA - Port Phillip - Rosebud - Harbour works***Former Notices - 738(T)/2009, 852(T)/2009 are cancelled*

Parks Victoria (AA419961)

Works associated with the refurbishment of the jetty (38° 21'.10 S 144° 54'.46 E) are in progress.

A barge and workboat will be on site. All vessels will display appropriate lights and signals.

The light (38° 20'.99 S 144° 54'.44 E) has been repositioned to 38° 21'.19 S 144° 54'.42 E.

Chart temporarily affected – Aus 143 – Aus 158 - AU439144

929(T)/2009 AUSTRALIA - VICTORIA - Lakes Entrance - Dredging operations completed

Former Notice - 740(T)/2009 is cancelled

Victorian Notice 78(T)/2009 (AA411745)

Cancel this notice on receipt.

Chart formerly affected – Aus 182

HYDROGRAPHIC REPORTS

<i>Locality</i>	<i>Report</i>	<i>Ship/Authority</i>	<i>Observer</i>
QLD- Thursday Island	Feature	ACV <i>Corio Bay</i>	M Hall
WA- Penguin Deeps	Depths	ACV <i>Corio Bay</i>	M Hall

NAVIGATION WARNINGS

The following radio messages have been received during the period to 31 July 2009. Signal copies of these messages may be destroyed. It is recommended that the reprint of Navigational Warnings should be kept in a file or a book divided into areas. Cancellation should be made on receipt of signals and reprints.

Rigs on location other than those listed in the latest Section III summary are the subject of Radio Navigational Warnings. Rigs in transit will not be the subject of Warnings.

AUSCOAST WARNING

- 161 Drill rig *Transocean Legend* in position 13° 24'.73 S 122° 08'.78 E. 2.5M clearance requested.
- 162 Cancelled.
- 163 Drill rig *West Atlas* in position 12° 32'.06 S 124° 27'.10 E. 2.5M clearance requested.
- 164 Drill rig *Jack Bates* in position 20° 05'.70 S 113° 57'.40 E. 2.5M clearance requested.
- 165 Cancelled.
- 166 Drill rig *Ensco 7500* in position 20° 12'.90 S 114° 32'.20 E. 2.5M clearance requested.
- 167 Cancelled.
- 168 Special purpose vessel *Tyco Decisive* conducting cable laying operations from 33° 44'.20 S 151° 25'.30 E to 33° 42'.00 S 152° 26'.50 E. 2M clearance requested.
- 169 Cancelled.
- 170 Orange unlit buoy 2 metres in diameter deployed in position 12° 38'.15 S 124° 28'.23 E and yellow unlit buoy 4 metres in diameter deployed in position 12° 34'.12 S 124° 25'.36 E.
- 171 Cancelled.
- 172 Cancelled.
- 173 Cancelled.
- 174 Cancelled.

NAVAREA X WARNINGS

- 011 Cancelled.
- 012 Cancelled.
- 013 Special purpose vessel *Tyco Durable* conducting cable laying operations from 12° 58'.00 S 154° 42'.90 E to 9° 38'.50 S 156° 02'.10 E. 2.5M clearance requested.

Navigational warnings in force as at 310001UTC JUL 09.**Auscoast**

086 102 128 134 138 148 149 155 156 157 161 163 164 166 168 170

Navarea X

009 013

Summary of mobile drilling rigs as at 310001UTC JUL 09.

<i>Name</i>	<i>Position</i>
Transocean Legend	13° 24'.73 S 122° 08'.78 E
Songa Venus	13° 30'.30 S 123° 30'.80 E
Ocean Shield	13° 53'.70 S 128° 29'.00 E
Ensco 7500	20° 12'.90 S 114° 32'.20 E
Atwood Eagle	19° 54'.48 S 115° 07'.55 E
Jack Bates	20° 05'.70 S 113° 57'.40 E
Nan Hai 6	21° 29'.20 S 113° 58'.70 E
Stena Clyde	21° 20'.80 S 114° 05'.20 E
Ocean Epoch	21° 31'.44 S 114° 06'.44 E
Ocean Patriot	38° 18'.00 S 148° 42'.40 E

NAVAREA XIV WARNINGS

Nil.

Navarea XIV warnings in force as at 310001UTC JUL 09.

Nil.

To accompany Australian Notice to Mariners 870/2009

HISTORIC WRECK

The site of an historic wreck is protected from unauthorised interference. For details see Australian Seafarers Handbook AHP 20.

Note for chart Aus 326.

To accompany Australian Notice to Mariners 870/2009

HISTORIC WRECK

The site of an historic wreck is protected from unauthorised interference. For details see Australian Seafarers Handbook AHP 20.

Note for chart Aus 740.

To accompany Australian Notice to Mariners 874/2009

HISTORIC WRECK

The site of an historic wreck is protected from unauthorised interference. For details see Australian Seafarers Handbook AHP 20.

Note for chart Aus 109.

To accompany Australian Notice to Mariners 874/2009

HISTORIC WRECK

The site of an historic wreck is protected from unauthorised interference. For details see Australian Seafarers Handbook AHP 20.

Note for chart Aus 118.

To accompany Australian Notice to Mariners 875/2009

HISTORIC WRECK

The site of an historic wreck is protected from unauthorised interference. For details see Australian Seafarers Handbook AHP 20.

Note for chart Aus 119.

To accompany Australian Notice to Mariners 878/2009

CHANNEL ESCAPE AREA

Mariners are advised that large vessels underway may make bold alterations of course and/or speed in this area and as such caution is to be exercised when navigating in these areas.

Note for chart Aus 172.

To accompany Australian Notice to Mariners 879/2009

CHANNEL ESCAPE AREA

Mariners are advised that large vessels underway may make bold alterations of course and/or speed in this area and as such caution is to be exercised when navigating in these areas.

Note for chart Aus 167.

To accompany Australian Notice to Mariners 880/2009

CHANNEL ESCAPE AREA

Mariners are advised that large vessels underway may make bold alterations of course and/or speed in this area and as such caution is to be exercised when navigating in these areas.

Note for chart Aus 164.

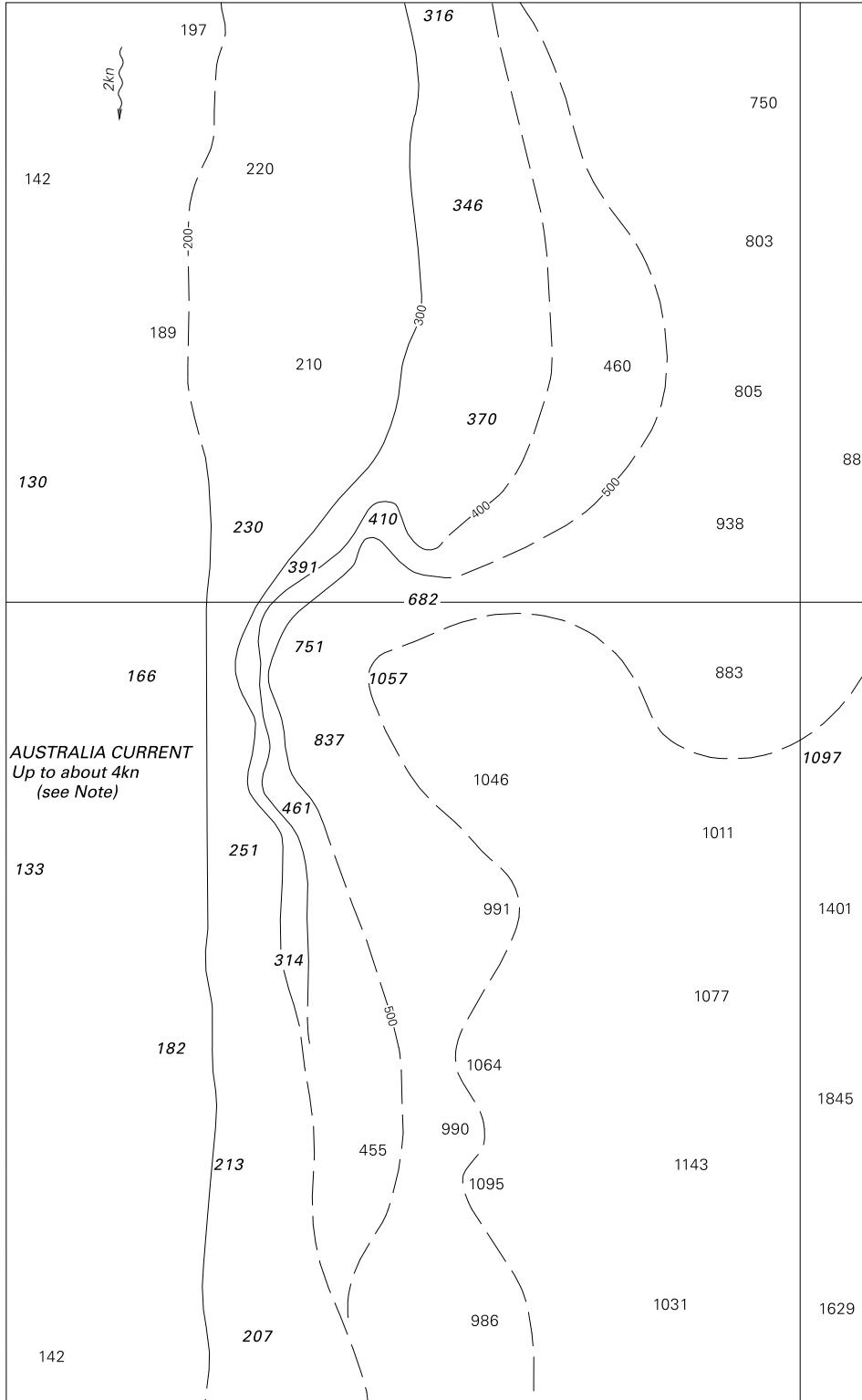
To accompany Australian Notice to Mariners 881/2009

CHANNEL ESCAPE AREA

Mariners are advised that large vessels underway may make bold alterations of course and/or speed in this area and as such caution is to be exercised when navigating in these areas.

Note for chart Aus 163.

To accompany Australian Notice to Mariners 858/2009

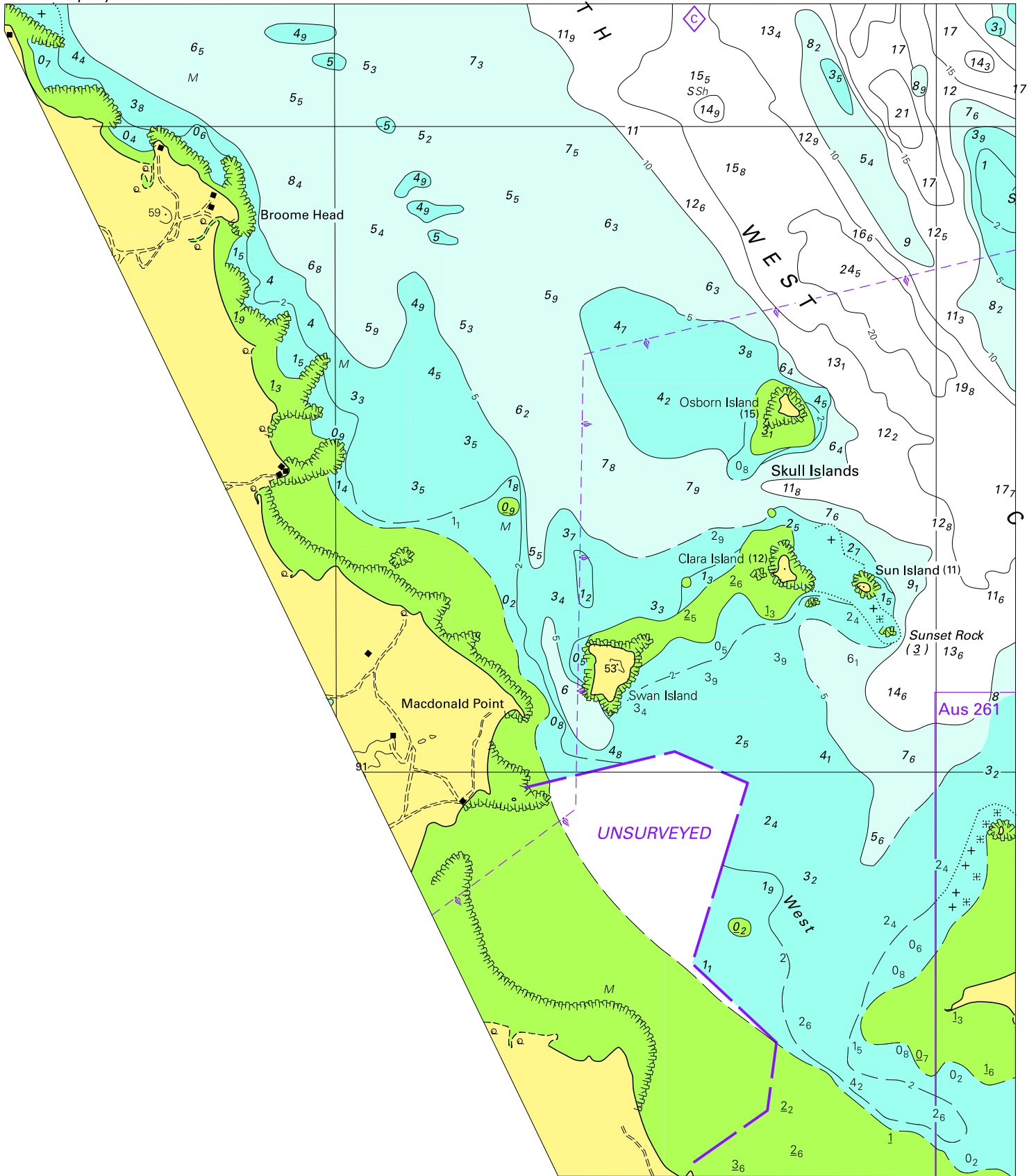


Block for chart Aus 813

© Commonwealth of Australia 2009

(125-2 x 202-9mm)

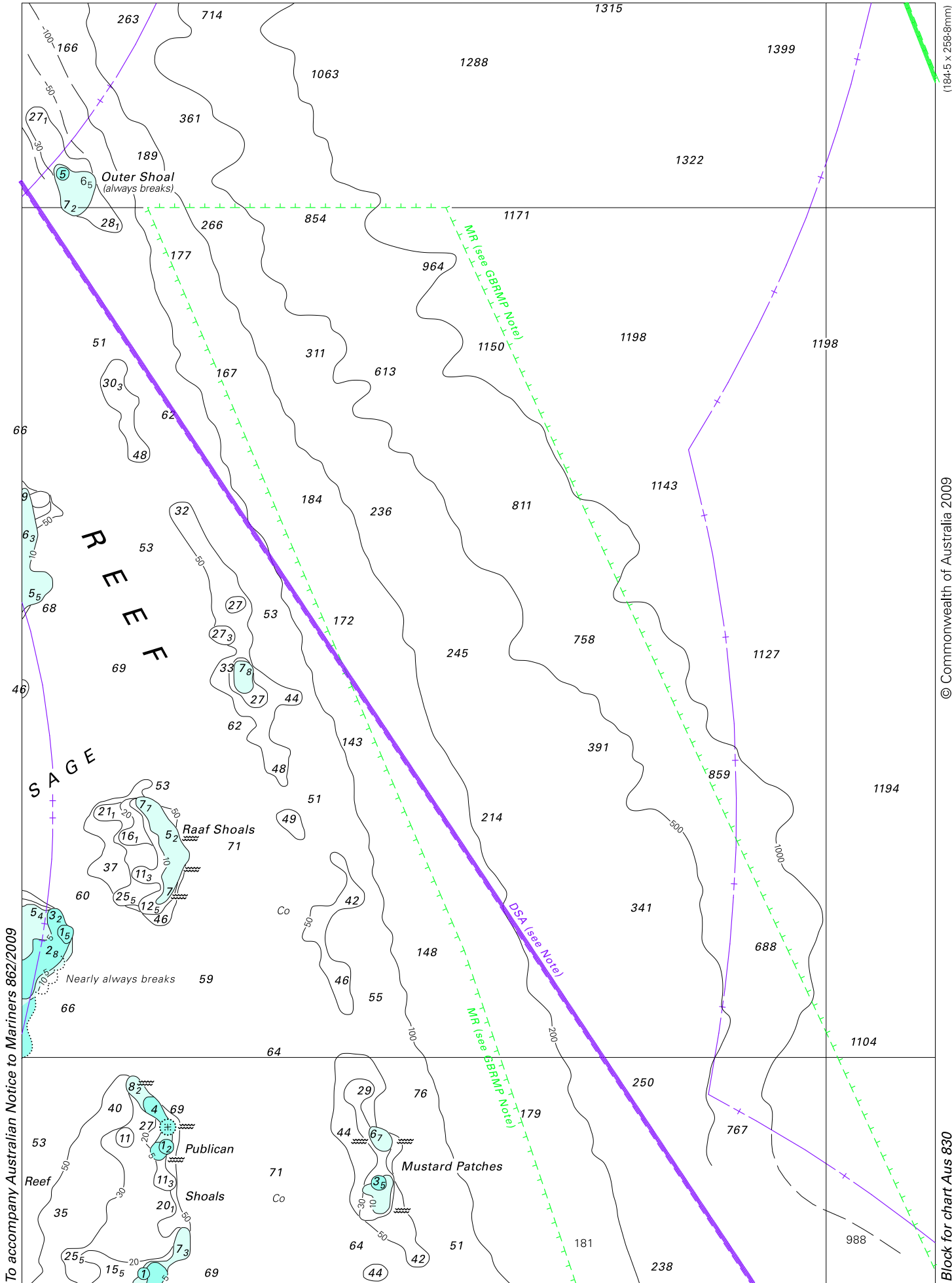
To accompany Australian Notice to Mariners 861/2009



Block for chart Aus 260

© Commonwealth of Australia 2009

(192.5 x 223.3mm)



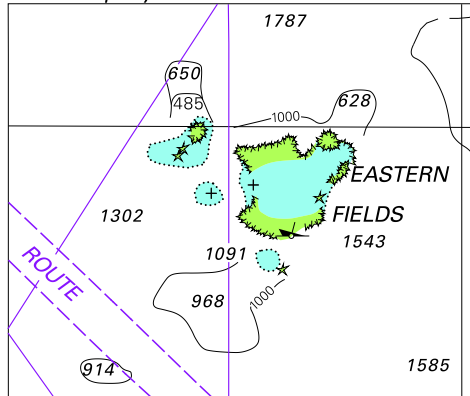
To accompany Australian Notice to Mariners 862/2009

(184.5 x 256.8mm)

© Commonwealth of Australia 2009

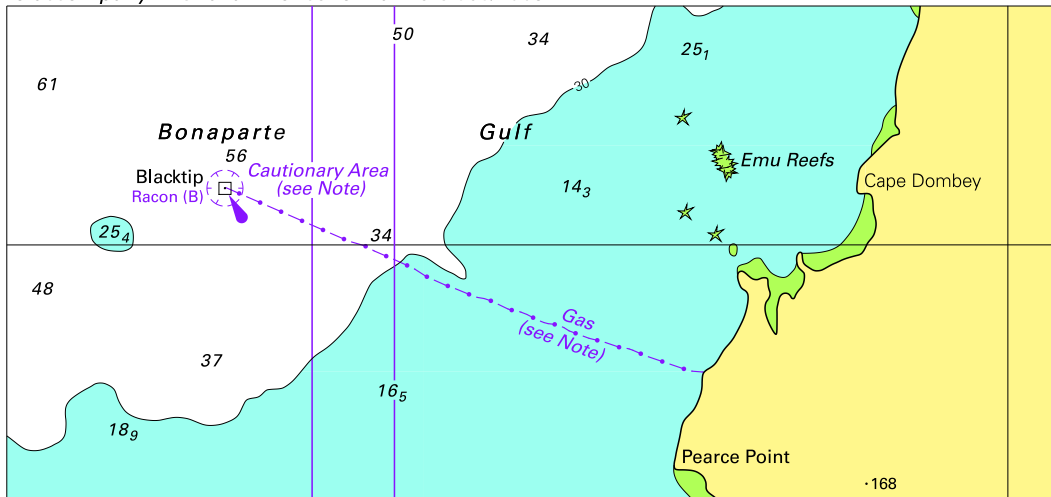
Block for chart Aus 830

To accompany Australian Notice to Mariners 864/2009



© Commonwealth of Australia 2009
Block for chart aus 4620 (63.6 X 52.1mm)

To accompany Australian Notice to Mariners 868/2009

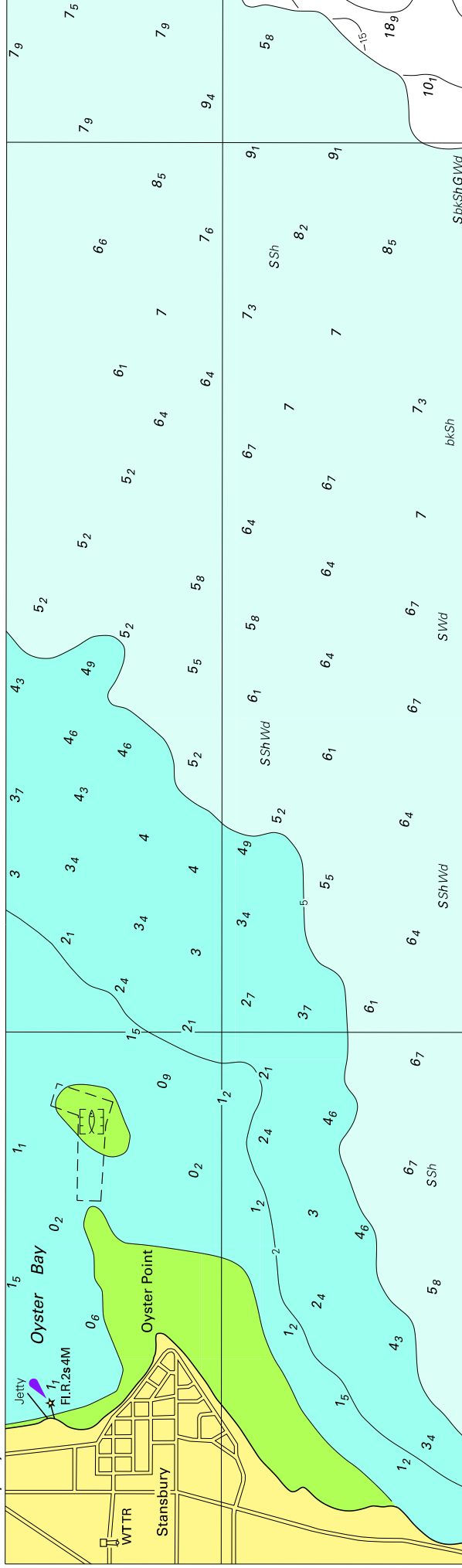


Block for chart Aus 4721

© Commonwealth of Australia 2009

(138.9 x 65.2mm)

To accompany Australian Notice to Mariners 877/2009

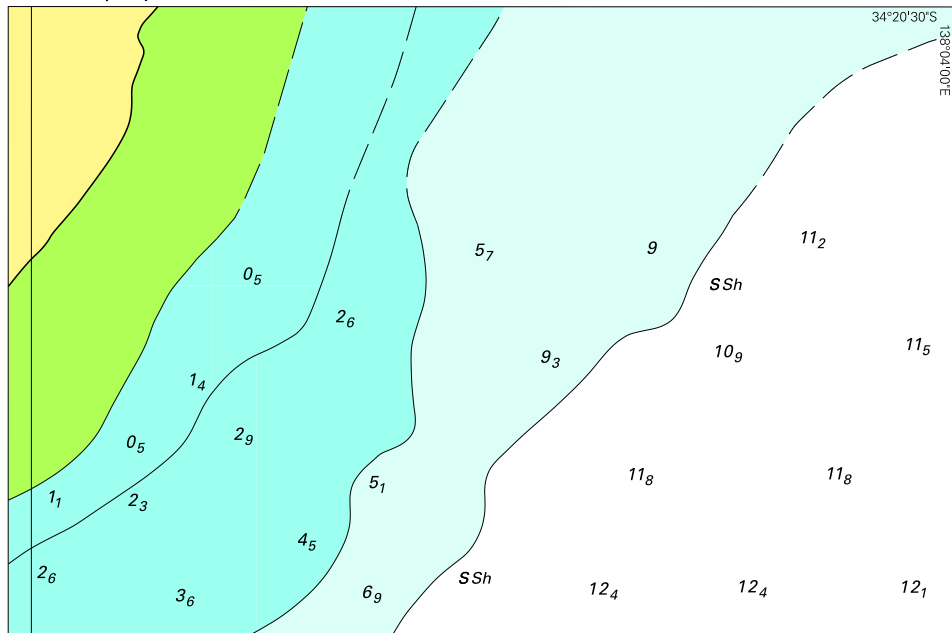


Block for chart Aus 139

© Commonwealth of Australia 2009

(267.8 x 78.6nm)

To accompany Australian Notice to Mariners 877/2009

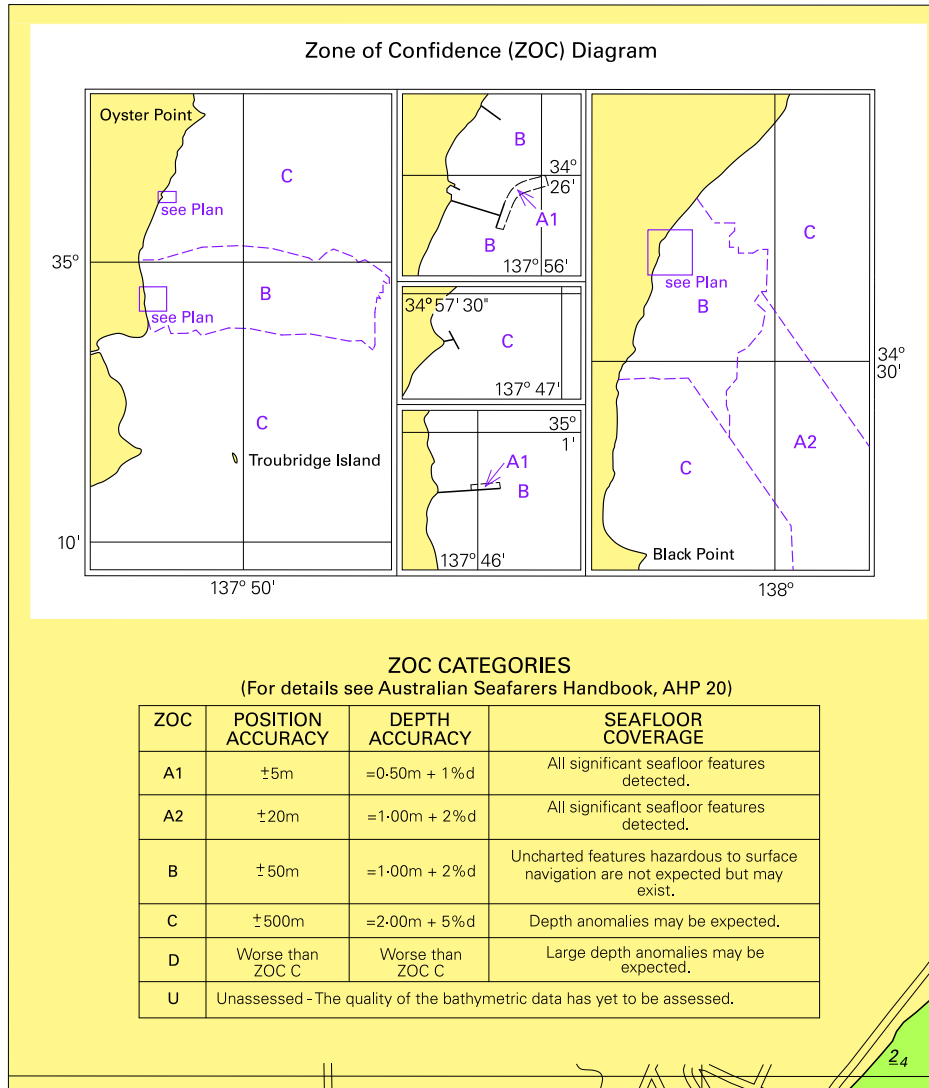


Block for chart Aus 139

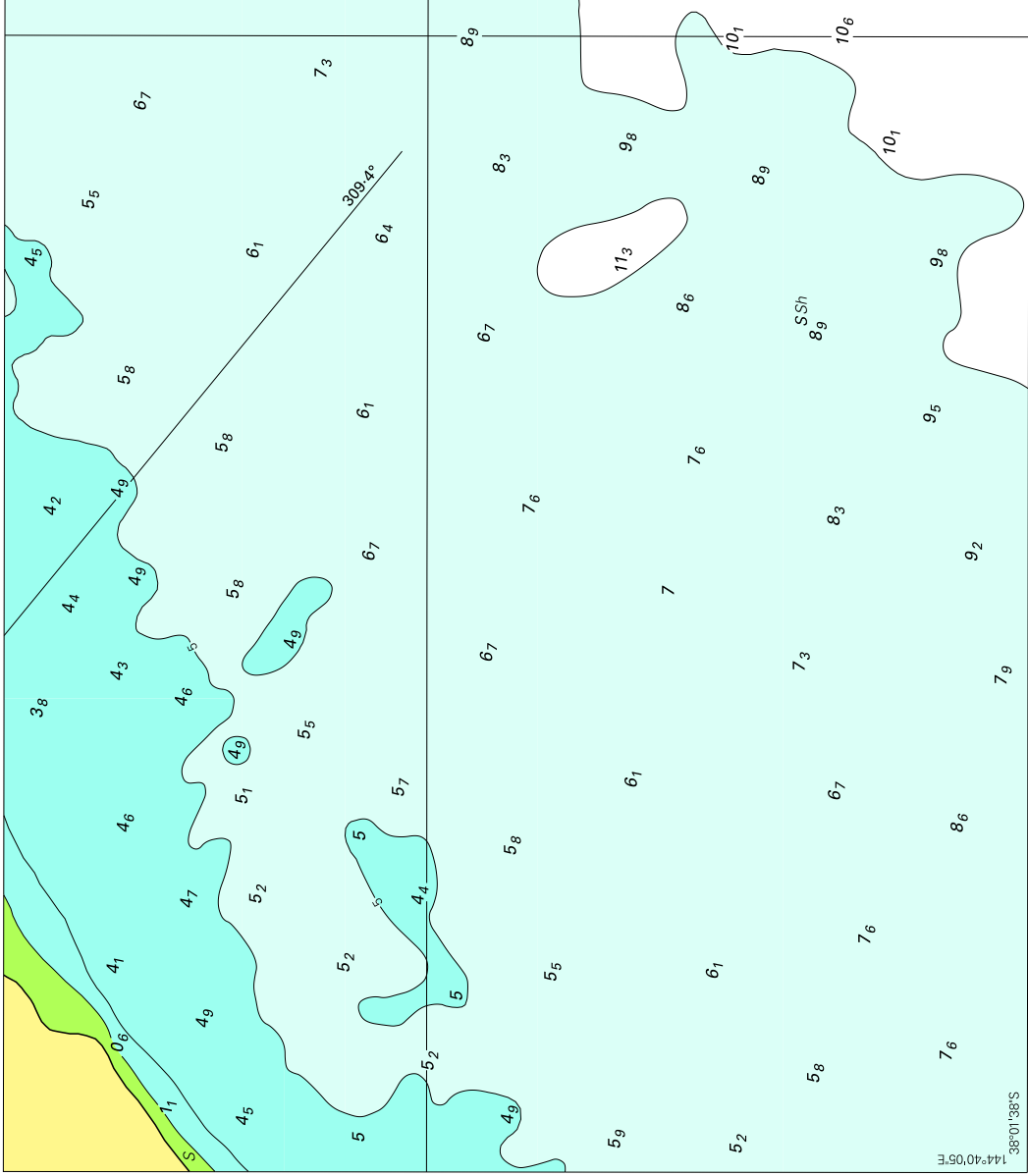
© Commonwealth of Australia 2009

(125.6 x 83.2mm)

To accompany Australian Notice to Mariners 877/2009



To accompany Australian Notice to Mariners 882/2009



(158.2 x 137.9mm)

© Commonwealth of Australia 2009

Block for chart Aus 155