



Australian Notices to Mariners are the authority for correcting Australian Charts and Publications

AUSTRALIAN NOTICES TO MARINERS

Notices 637 - 688

Published fortnightly by the Australian Hydrographic Service

Commodore R. NAIRN RAN
Hydrographer of Australia

-
- SECTIONS.**
- I. **Australian Notices to Mariners, including blocks and notes.**
 - II. **Hydrographic Reports.**
 - III. **Navigational Warnings.**

For Notices affecting Admiralty List of Lights and Fog Signals; List of Radio Signals; and Sailing Directions see **British Notices to Mariners.**

The substance of these notices should be inserted on the charts affected.

Bearings are referred to the true compass and are reckoned clockwise from North; those relating to lights are given as seen by an observer from seaward. Positions quoted in permanent notices relate to the horizontal datum for the chart(s). When preliminary or temporary notices affect multiple charts, positions will be provided in relation to only one horizontal datum and that datum will be specified. When the multiple charts do not have a common horizontal datum, mariners will be required to adjust the position(s) for those charts not on the specified datum. The range quoted for a light is its nominal range. Depths are with reference to the chart datum of each chart. Heights are above mean high water springs or mean higher high water, as appropriate.

The capital letter (P) or (T) after the number of any notice denotes a preliminary or temporary notice respectively, which are contained separately at the end of the permanent notices. A star () adjacent to the number of a notice indicates that the notice is based on original information.*

Mariners are particularly requested to notify the AUSTRALIAN HYDROGRAPHIC SERVICE, Locked Bag 8801 Wollongong, NSW 2500 (Fax 02-4223 6599, e-mail Hydro.NTM@defence.gov.au or, alternatively by filling in and submitting the [Hydrographic Notes](#) forms located on the web site – www.hydro.gov.au), immediately on the discovery of new dangers or suspected dangers to navigation. For changes or defects in aids to navigation notify AusSAR (Fax 02-6230 6868 or email rccaus@amsa.gov.au).

Copies of Australian notices are available free of charge from the Australian Hydrographic Service (AHS) website (www.hydro.gov.au) and through the eNotices (email) service (www.hydro.gov.au/enotices/enotices.htm).

Individual Notices may be copied for the purpose of inserting Notice substance on official charts and publications. Paper copies may be printed by chart agents and distributed to customers on a cost recovery basis. Participating chart agents are listed on the AHS website as providing a 'Paper Notices to Mariners' service (www.hydro.gov.au/prodserv/distributors/distributors.htm). Copies of the notices may not be sold for profit without prior written agreement.

IMPORTANT NOTICE

This edition of Notices to Mariners includes all significant information affecting AHS products which the AHS has become aware of since the last edition. All reasonable efforts have been made to ensure the accuracy and completeness of the information, including third party information, on which these updates are based. The AHS regards third parties from which it receives information as reliable, however the AHS cannot verify all such information and errors may therefore exist. The AHS does not accept liability for errors in third party information.

© Commonwealth of Australia 2009

This work is copyright. Apart from any use permitted under the Copyright Act 1968, no part may be reproduced by any process, adapted, communicated or commercially exploited without prior written permission from The Commonwealth represented by the Australian Hydrographic Service.

NUMERICAL INDEX OF NOTICES TO MARINERS

Edition No 11

Notices	Aus Chart, INT Chart, ENC Cell
637.....	Aus 299, 813, AU318117, 318118, 337151, 5644P1, 5683P1, 5683P2
638.....	Aus 811
639.....	Aus 220
640.....	Aus 364, 424
641.....	Aus 221, 812
642.....	Aus 236
643.....	Aus 237
644.....	Aus 823, 824
645.....	Aus 259, 828
646.....	Aus 833
647.....	Aus 292, 293, 839
648.....	Aus 313, 321, 4721, 4722, INT 721, 722, AX 0313F, 0321F, 4721F, 4722F
649.....	Aus 318, 319, 320, 728, AX 0319F
650.....	Aus 325, 326
651.....	Aus 54
652.....	Aus 328
653.....	Aus 328
654.....	Aus 111, 114, 117, AX 70117
655.....	Aus 120, 122, 341
656.....	Aus 178, 790
657.....	Aus 155
658(T).....	Aus 209, AU433152
659(T).....	Aus 814
660(T).....	Aus 235, 236, 814
661(T).....	Aus 236
662(T).....	Aus 236
663(T).....	Aus 235
664(T).....	Aus 260, 261, 367, 822, AX 60260, 67261, AU423150, 5261P2
665(T).....	Aus 426, 612
666(T).....	Aus 249, 250, AU5250P2
667(T).....	Aus 252, 253, 268, AU5268P2
668(T).....	Aus 268
669(T).....	Aus 256, 257, AU5XX257
670(T).....	Aus 256, 827, 828, AU419146, 420146
671(T).....	Aus 292, 293, 299, AU5XX299
672(T).....	Aus 315, 318, 4721, INT 721, AX 0315F, 4721F, AU313126, 313127, 414126
673(T).....	Aus 323
674(T).....	Aus 323, 324
675(T).....	Aus 324
676(T).....	Aus 54
677(T).....	Aus 54, AU5XXX54
678(T).....	Aus 58, 59
679(T).....	Aus 328, AU320115
680(T).....	Aus 328, 329, 744, AU422114
681(T).....	Aus 330, 416, 4708, INT 708, AX 4708F, AU130090
682(T).....	Aus 125
683(T).....	Aus 346, 347
684(T).....	Aus 171, 173, AU444147
685(T).....	Aus 164, AU5164P1
686(T).....	Aus 163, AU5163P1
687(T).....	Aus 178, AU5178P4
688(T).....	Aus 143, 154, 155, AU438144, 5XX154

ENC Cell	Notices
AU130090	681(T)
AU313126	672(T)
AU313127	672(T)
AU318117	637
AU318118	637
AU320115	679(T)
AU337151	637
AU414126	672(T)
AU419146	670(T)
AU420146	670(T)
AU422114	680(T)
AU423150	664(T)
AU433152	658(T)
AU438144	688(T)
AU444147	684(T)
AU5XX54	677(T)
AU5XX154	688(T)
AU5163P1	686(T)
AU5164P1	685(T)
AU5178P4	687(T)
AU5250P2	666(T)
AU5XX257	669(T)
AU5261P2	664(T)
AU5XX299	671(T)
AU5268P2	667(T)
AU5644P1	637
AU5683P1	637
AU5683P2	637

637 AUSTRALIA - Product

Australian Hydrographic Service (AA399053, AA409832)

New Chart

<i>Chart</i>	<i>Published</i>	<i>Title and description of amendments</i>	<i>Scale</i>	<i>Index Chart</i>	<i>Price</i>
Aus 813	24/4/2009	Australia - East Coast - New South Wales Clarence River to Point Danger 28° 08' 00" S - 29° 37' 18" S 153° 13' 00" E - 154° 12' 24" E <i>New metric chart referred to WGS84 and LAT; includes maritime boundaries.</i>	1:150 000	Aus 5001	\$35.00

New Edition

<i>Chart</i>	<i>Published</i>	<i>Title and description of amendments</i>	<i>Scale</i>	<i>Index Chart</i>	<i>Price</i>
Aus 299	24/4/2009	Australia - North Coast - Torres Strait - Approaches to Thursday Island <i>New edition with general updating throughout and horizontal datum referred to WGS84. Note: see temporary Notice to Mariners 671(T)/2009.</i>	1:12 500	Aus 5000	\$35.00

New Electronic Navigation Chart (Seafarer ENC)

<i>Cell Name</i>	<i>Released</i>	<i>Title</i>
AU318117	June 2009	Indian Ocean - Cell 8
AU318118	June 2009	Indian Ocean - Imperieuse Reef
AU337151	June 2009	Tasman Sea - Cell 10
AU5644P1	June 2009	Papua New Guinea - North East Coast - Oro Bay
AU5683P1	June 2009	Bougainville - East Coast - Anewa Bay
AU5683P2	June 2009	Bougainville - East Coast - Kieta Harbour

Chart permanently withdrawn

<i>Chart</i>	<i>On publication of new chart</i>
Aus 813	Aus 813
Aus 299	Aus 299

For further details refer to the AHS website at www.hydro.gov.au for new edition and new chart stock arrival information.

When placing orders with a chart agent, mariners should advise whether their order pertains to the current edition or the new edition.

638* AUSTRALIA - NEW SOUTH WALES - Trial Bay - Chart limits

Australian Hydrographic Service (AA397219)

Aus 811 [285/2009]

Insert	magenta limits, with legend Aus 220 in NE corner, between	30° 53'.92 S	153° 00'.18 E
		30° 53'.92 S	153° 03'.00 E
		30° 51'.60 S	153° 03'.00 E
		30° 51'.60 S	153° 00'.18 E
		30° 53'.92 S	153° 00'.18 E
Delete	magenta limits, with legend Aus 220, centred on	30° 51'.5 S	153° 03'.0 E

639* AUSTRALIA - NEW SOUTH WALES - Macleay River - Buoy established

NSW Maritime (AA402301, AA402302)

Aus 220 (plan, Trial Bay) [NC 10/4/2009]

Insert	special spar buoy, without topmark	30° 53'.741 S	153° 00'.937 E
Delete	depth, 4 ₆ m	30° 53'.72 S	153° 00'.92 E

5 June 2009

640* AUSTRALIA - NEW SOUTH WALES - Nambucca Heads to Point Danger - Chart limit; legend
Australian Hydrographic Service (AA407227)

Aus 364 [245/2008]

Insert	magenta limits, with legend <i>Aus 812</i> in NE corner, between	29° 25'.0 S	152° 54'.0 E
		29° 17'.3 S	152° 54'.0 E
		29° 17'.3 S	153° 53'.4 E
		29° 25'.0 S	153° 53'.4 E

Delete	magenta legend, Adjoining Chart Aus 363, in S border	29° 25'.0 S	153° 37'.5 E
--------	--	-------------	--------------

Aus 424 [1171/2008]

Insert	magenta limits, with legend <i>Aus 812</i> in SE corner, between	30° 45'.6 S	152° 54'.0 E
		30° 45'.6 S	153° 53'.4 E
		29° 17'.2 S	153° 53'.4 E
		29° 17'.2 S	152° 54'.0 E
		30° 45'.6 S	152° 54'.0 E

Delete	magenta limits, with legend Aus 363, centred on	30° 30'.0 S	153° 30'.0 E
--------	---	-------------	--------------

641* AUSTRALIA - NEW SOUTH WALES - North Solitary Island - Depth southwards
HMAS *Leeuwin* (AA263318)

Aus 221 [532/2009]

Substitute	depth, 68m, for safe clearance depth, 68m	29° 59'.7 S	153° 24'.4 E
------------	---	-------------	--------------

Aus 812 [NC 10/4/2009]

Substitute	depth, 68m, for safe clearance depth, 68m	29° 59'.7 S	153° 24'.4 E
------------	---	-------------	--------------

642* AUSTRALIA - QUEENSLAND - Cape Moreton - Light altered
Australian Hydrographic Service (AA407572)

Aus 236 [592/2009]

Amend	light range to 16M	27° 01'.9 S	153° 28'.0 E
-------	--------------------	-------------	--------------

643* AUSTRALIA - QUEENSLAND - Brisbane River - Luggage Point - Jetty
Maritime Safety Queensland (AA405950, DHDB 1262376)

Aus 237 [1174/2008]

Insert	continuous line with legend <i>Jetty</i> , between	27° 22'.898 S	153° 09'.310 E
		27° 22'.908 S	153° 09'.324 E

644* AUSTRALIA - QUEENSLAND - Gould Shoal to St Bees Island - Depths
Australian Hydrographic Service (AA405635)

Aus 823 [289/2009]

Substitute	depth, 6m, for depth, 6 ₃ m	21° 03'.7 S	149° 20'.1 E
	depth, 19 ₇ m, for depth, 19 ₅ m	20° 59'.0 S	149° 27'.5 E

Aus 824 [289/2009]

Substitute	depth, 6m, for depth, 6 ₃ m	21° 03'.7 S	149° 20'.1 E
	depth, 19 ₇ m, for depth, 19 ₅ m	20° 59'.0 S	149° 27'.5 E

645* AUSTRALIA - QUEENSLAND - Hinchinbrook Channel - Light buoy withdrawn; obstruction removed
Maritime Safety Queensland (AA405340, AA405341)

Aus 259 [474/2009]

Delete	light buoy	18° 17'.7 S	146° 04'.8 E
	danger circle, with legend Obstn	18° 17'.9 S	146° 04'.8 E

Aus 828 [434/2008]

Delete	magenta legend, Pearl Culture (see Note)	18° 17'.9 S	146° 04'.7 E
--------	--	-------------	--------------

646* AUSTRALIA - QUEENSLAND - Lads Passage - Depths
LADS Flight (DHDB 1058486)

Aus 833 [408/2009]

Insert	accompanying block	13° 43'.0 S	144° 05'.0 E
	depth, 4 ₇ m, enclosed by contour	13° 51'.99 S	144° 05'.96 E
	depth, 5 ₆ m, enclosed by contour	13° 53'.29 S	144° 08'.86 E
	unsurveyed boundary, between	13° 37'.15 S	143° 54'.85 E
		13° 38'.40 S	143° 55'.55 E
	unsurveyed boundary, between	13° 38'.85 S	143° 55'.80 E
		13° 40'.35 S	143° 56'.60 E
	unsurveyed boundary, between	13° 41'.25 S	143° 57'.15 E
		13° 42'.55 S	143° 57'.90 E
Delete	danger line, between	13° 52'.3 S	144° 06'.4 E
		13° 52'.8 S	144° 06'.6 E
	unsurveyed boundary, between	13° 37'.6 S	143° 57'.9 E
		13° 35'.7 S	143° 55'.6 E

647* AUSTRALIA - TORRES STRAIT - Prince of Wales Channel - Depth
Auscoast Warning 121/2009 (AA406102), HMAS *Leeuwin* (AA407576)

Aus 292 [541/2009]

Insert	depth, 9 ₄ m, enclosed by contour	10° 28'.79 S	142° 22'.39 E
Delete	depth, 10 ₅ m	10° 28'.9 S	142° 22'.5 E

Aus 293 [597/2009]

Insert	depth, 9 ₄ m, enclosed by contour	10° 28'.877 S	142° 22'.332 E
--------	--	---------------	----------------

Aus 839 [409/2009]

Insert	depth, 9 ₄ m, and extend contour NE to enclose	10° 28'.79 S	142° 22'.39 E
--------	---	--------------	---------------

648* INDONESIA - Pulau Alor - Light altered

BA Notice 21/2565/2009 (AA405576)

Aus 313 [NE 23/5/2008]

Amend light range to 29M 8° 19'.1 S 125° 08'.2 E

Aus 321 [415/2009]

Amend light range to 29M 8° 19'.1 S 125° 08'.2 E

Aus 4721 (INT 721) [365/2009]

Amend light range to 29M 8° 19'.1 S 125° 08'.2 E

Aus 4722 (INT 722) [416/2009]

Amend light range to 29M 8° 19'.1 S 125° 08'.2 E

AX 0313F [NC 26/9/2008]

Amend light range to 29M 8° 19'.1 S 125° 08'.2 E

AX 0321F [415/2009]

Amend light range to 29M 8° 19'.1 S 125° 08'.2 E

AX 4721F [365/2009]

Amend light range to 29M 8° 19'.1 S 125° 08'.2 E

AX 4722F [416/2009]

Amend light range to 29M 8° 19'.1 S 125° 08'.2 E

649* AUSTRALIA - WESTERN AUSTRALIA - Rothery Reef - Depths

Former Notice - 882(P)/2008 is cancelled

HMAS *Melville* (DHDB 1092789)**Aus 318** [600/2009]

Insert	depth, 23 ₉ m, enclosed by contour	13° 46'.69 S	125° 46'.10 E
	depth, 3 ₉ m, enclosed by contour	13° 47'.47 S	125° 47'.04 E
	depth, 4 ₃ m, enclosed by contour	13° 46'.52 S	125° 48'.17 E

Delete	depth, 31m	13° 46'.4 S	125° 46'.0 E
	depth, 5 ₅ m	13° 48'.1 S	125° 46'.9 E

Aus 319 [1228/2008]

Insert	depth, 23 ₉ m, enclosed by contour	13° 46'.61 S	125° 46'.16 E
	depth, 3 ₉ m, enclosed by contour	13° 47'.39 S	125° 47'.10 E
	depth, 4 ₃ m, enclosed by contour	13° 46'.44 S	125° 48'.23 E
	depth, 48m, enclosed by contour	13° 47'.59 S	125° 34'.93 E
	depth, 47m, enclosed by contour	13° 30'.41 S	125° 35'.90 E

Delete	depth, 31m	13° 46'.4 S	125° 46'.1 E
	depth, 5 ₅ m	13° 48'.0 S	125° 47'.0 E

Aus 320 [304/2009]

Insert	depth, 3 ₉ m, and extend contour N to enclose	13° 47'.47 S	125° 47'.04 E
	depth, 48m, enclosed by contour	13° 47'.67 S	125° 34'.87 E

Delete	depth, 6m	13° 46'.9 S	125° 47'.1 E
	depth, 4 ₈ m	13° 48'.1 S	125° 47'.0 E

649* AUSTRALIA - WESTERN AUSTRALIA - Rothery Reef – Depths (*continued*)**Aus 728** [600/2009]

Insert	depth, 24 ₂ m, enclosed by contour	13° 46'.61 S	125° 46'.16 E
	depth, 4 ₃ m (a)	13° 47'.83 S	125° 46'.96 E
	depth, 4 ₂ m, (b) with contour enclosing (a) and (b)	13° 47'.39 S	125° 47'.10 E
	depth, 5 ₁ m, and extend contour NE to enclose	13° 46'.87 S	125° 47'.38 E
	depth, 4 ₆ m, enclosed by contour	13° 46'.44 S	125° 48'.23 E
	depth, 48m, enclosed by contour	13° 47'.59 S	125° 34'.93 E
	depth, 47m, enclosed by contour	13° 30'.41 S	125° 35'.90 E
Delete	depth, 31m	13° 46'.4 S	125° 46'.1 E
	depth, 5 ₅ m	13° 48'.0 S	125° 47'.0 E
	depth, 6m	13° 46'.9 S	125° 47'.1 E
	depth, 12 ₂ m	13° 46'.3 S	125° 48'.1 E
	depth, 7 ₃ m	13° 46'.4 S	125° 48'.5 E

AX 0319F [1228/2008]

Insert	depth, 23 ₉ m, enclosed by contour	13° 46'.61 S	125° 46'.16 E
	depth, 3 ₉ m, enclosed by contour	13° 47'.39 S	125° 47'.10 E
	depth, 4 ₃ m, enclosed by contour	13° 46'.44 S	125° 48'.23 E
	depth, 48m, enclosed by contour	13° 47'.59 S	125° 34'.93 E
	depth, 47m, enclosed by contour	13° 30'.41 S	125° 35'.90 E
Delete	depth, 31m	13° 46'.4 S	125° 46'.1 E
	depth, 5 ₅ m	13° 48'.0 S	125° 47'.0 E

650* AUSTRALIA - WESTERN AUSTRALIA - Mermaid Reef - Plan; chart limits

Department of the Environment, Water, Heritage and the Arts (DHDB 1061160)

Aus 325 [569/2006]

Insert	magenta limits, with legend <i>Aus 326 Plan</i> , between	17° 04'.72 S	119° 37'.65 E
		17° 04'.72 S	119° 38'.90 E
		17° 03'.37 S	119° 38'.90 E
		17° 03'.37 S	119° 37'.65 E
		17° 04'.72 S	119° 37'.65 E

Aus 326 [367/2009]

Insert	accompanying block	18° 20'.0 S	117° 30'.0 E
--------	--------------------	-------------	--------------

651* AUSTRALIA - WESTERN AUSTRALIA - Port Hedland - Light established; light beacons withdrawn

Port Hedland Port Authority Notice 6/2009 (AA408186)

Aus 54 [NC 7/11/2008]

Insert	light, <i>F.Bu</i>	20° 19'.059 S	118° 34'.044 E
Delete	light beacon	20° 19'.10 S	118° 34'.17 E
	light beacon	20° 19'.16 S	118° 34'.19 E

652* AUSTRALIA - WESTERN AUSTRALIA - North Sandy Island - Contour

Australian Hydrographic Service (AA406976)

Aus 328 [421/2009]*On certain copies only*

Insert	contour to enclose depth, 9 ₆ m	21° 01'.96 S	115° 38'.73 E
--------	--	--------------	---------------

653* AUSTRALIA - WESTERN AUSTRALIA - Muiron Islands - Production wells; production platform established northwestwards

Apache Energy Ltd (AA395640, AA395641, AA395643, AA395645 - AA395647)

Aus 328 [652/2009]

Insert	accompanying block	21° 15'.0 S	114° 16'.0 E
--------	--------------------	-------------	--------------

654* AUSTRALIA - WESTERN AUSTRALIA - Cockburn Sound - Marine farms; nav aids altered

Department for Planning and Infrastructure WA (AA290245, AA407477, AA407480, AA407481)

Aus 111 [584/2008]

Insert	dashed magenta line, between	32° 14'.913 S	115° 43'.358 E
		32° 14'.985 S	115° 43'.430 E
	special spar light buoy, Q. Y, without topmark	32° 14'.380 S	115° 43'.015 E
	special spar light buoy, Q. Y, without topmark	32° 14'.508 S	115° 42'.894 E
	special spar light buoy, Q. Y, without topmark	32° 14'.660 S	115° 43'.364 E
	special spar light buoy, Q. Y, without topmark	32° 14'.768 S	115° 43'.221 E
	special spar light buoy, Q. Y, without topmark	32° 14'.504 S	115° 43'.215 E
Delete	dashed magenta line, between	32° 14'.91 S	115° 43'.36 E
		32° 14'.86 S	115° 43'.43 E
	topmark	32° 14'.26 S	115° 42'.81 E
	topmark	32° 14'.39 S	115° 42'.70 E
	topmark	32° 14'.63 S	115° 43'.09 E
	light buoy	32° 14'.51 S	115° 43'.22 E
	topmark	32° 14'.91 S	115° 43'.36 E

Aus 114 (inset, Kwinana Grain Jetty) [1185/2008]

Insert	special spar buoy, with topmark	32° 15'.106 S	115° 44'.760 E
	special spar buoy, with topmark	32° 15'.064 S	115° 45'.003 E
	special topmark	32° 15'.517 S	115° 44'.376 E
	special topmark	32° 14'.985 S	115° 44'.885 E
	special topmark	32° 15'.137 S	115° 45'.119 E
Substitute	special spar buoy, with topmark for light buoy	32° 15'.68 S	115° 44'.60 E
	special spar buoy, with topmark for light buoy	32° 15'.59 S	115° 44'.48 E
Delete	light buoy	32° 15'.42 S	115° 44'.48 E
	light buoy	32° 15'.36 S	115° 44'.55 E
	light buoy	32° 15'.41 S	115° 44'.64 E
	light buoy	32° 15'.47 S	115° 44'.73 E
	light buoy	32° 15'.51 S	115° 44'.78 E
	light buoy	32° 15'.23 S	115° 44'.67 E
	light buoy	32° 15'.09 S	115° 44'.79 E
	light buoy	32° 15'.07 S	115° 45'.01 E

654* AUSTRALIA - WESTERN AUSTRALIA - Cockburn Sound - Marine farms; nav aids altered (continued)

Aus 117 [547/2009]

Insert	special spar buoy, with topmark	32° 15'.106 S	115° 44'.760 E
	dashed magenta line, between	32° 14'.812 S	115° 43'.501 E
		32° 14'.897 S	115° 43'.585 E
		32° 14'.998 S	115° 43'.441 E
		32° 14'.913 S	115° 43'.358 E
	light beacon, <i>Fl.G.3s</i> , with starboard lateral topmark	32° 16'.179 S	115° 41'.914 E
	special spar light buoy, <i>Q.Y</i> , without topmark	32° 14'.897 S	115° 43'.585 E
	special spar light buoy, <i>Q.Y</i> , without topmark	32° 14'.998 S	115° 43'.441 E
	special topmark	32° 15'.515 S	115° 44'.375 E
	special topmark	32° 14'.985 S	115° 44'.885 E
	special topmark	32° 15'.137 S	115° 45'.119 E
	Substitute	special spar buoy, with topmark for light buoy	32° 15'.68 S
special spar buoy, with topmark for light buoy		32° 15'.59 S	115° 44'.48 E
special spar buoy, with topmark for light buoy		32° 15'.06 S	115° 45'.00 E
Delete	light buoy	32° 15'.42 S	115° 44'.48 E
	light buoy	32° 15'.36 S	115° 44'.55 E
	light buoy	32° 15'.09 S	115° 44'.79 E
	dashed magenta line, between	32° 14'.81 S	115° 43'.50 E
		32° 14'.91 S	115° 43'.36 E
	light buoy	32° 08'.94 S	115° 40'.38 E
	light buoy	32° 09'.11 S	115° 40'.48 E
	light buoy	32° 09'.31 S	115° 40'.55 E
	light buoy	32° 09'.37 S	115° 40'.77 E
	light buoy	32° 09'.44 S	115° 41'.00 E
	light buoy	32° 09'.18 S	115° 41'.00 E
	light buoy	32° 08'.94 S	115° 41'.00 E
	light buoy	32° 08'.94 S	115° 40'.70 E
	marine farm	32° 09'.05 S	115° 40'.73 E
	entry prohibited area with legend, centred on	32° 09'.14 S	115° 40'.75 E
	topmark	32° 14'.26 S	115° 42'.81 E
	topmark	32° 14'.39 S	115° 42'.70 E
	topmark	32° 14'.50 S	115° 43'.22 E
	topmark	32° 14'.63 S	115° 43'.09 E
	light buoy	32° 14'.80 S	115° 43'.50 E
light buoy	32° 14'.91 S	115° 43'.36 E	

654* AUSTRALIA - WESTERN AUSTRALIA - Cockburn Sound - Marine farms; nav aids altered (continued)**AX 70117 [547/2009]**

Insert	special spar buoy, with topmark	32° 15'.106 S	115° 44'.760 E
	dashed magenta line, between	32° 14'.812 S	115° 43'.501 E
		32° 14'.897 S	115° 43'.585 E
		32° 14'.998 S	115° 43'.441 E
		32° 14'.913 S	115° 43'.358 E
	light beacon, <i>Fl.G.3s</i> , with starboard lateral topmark	32° 16'.179 S	115° 41'.914 E
	special spar light buoy, <i>Q.Y.</i> , without topmark	32° 14'.897 S	115° 43'.585 E
	special spar light buoy, <i>Q.Y.</i> , without topmark	32° 14'.998 S	115° 43'.441 E
	special topmark	32° 15'.515 S	115° 44'.375 E
	special topmark	32° 14'.985 S	115° 44'.885 E
special topmark	32° 15'.137 S	115° 45'.119 E	
Substitute	special spar buoy, without topmark for light buoy	32° 15'.68 S	115° 44'.60 E
	special spar buoy, without topmark for light buoy	32° 15'.59 S	115° 44'.48 E
	special spar buoy, without topmark for light buoy	32° 15'.06 S	115° 45'.00 E
Delete	light buoy	32° 15'.42 S	115° 44'.48 E
	light buoy	32° 15'.36 S	115° 44'.55 E
	light buoy	32° 15'.09 S	115° 44'.79 E
	dashed magenta line, between	32° 14'.81 S	115° 43'.50 E
		32° 14'.91 S	115° 43'.36 E
	light buoy	32° 08'.94 S	115° 40'.38 E
	light buoy	32° 09'.11 S	115° 40'.48 E
	light buoy	32° 09'.31 S	115° 40'.55 E
	light buoy	32° 09'.37 S	115° 40'.77 E
	light buoy	32° 09'.44 S	115° 41'.00 E
	light buoy	32° 09'.18 S	115° 41'.00 E
	light buoy	32° 08'.94 S	115° 41'.00 E
	light buoy	32° 08'.94 S	115° 40'.70 E
	marine farm	32° 09'.05 S	115° 40'.73 E
	entry prohibited area with legend, centred on	32° 09'.14 S	115° 40'.75 E
	topmark	32° 14'.26 S	115° 42'.81 E
	topmark	32° 14'.39 S	115° 42'.70 E
	topmark	32° 14'.50 S	115° 43'.22 E
	topmark	32° 14'.63 S	115° 43'.09 E
light buoy	32° 14'.80 S	115° 43'.50 E	
light buoy	32° 14'.91 S	115° 43'.36 E	

655* AUSTRALIA - SOUTH AUSTRALIA - Thevenard - Yatala Channel - Light beacon

Australian Hydrographic Service (AA188251, AA407185)

Aus 120 [67/2009]

Insert	port lateral topmark	32° 11'.87 S	133° 34'.54 E
--------	----------------------	--------------	---------------

Aus 122 [201/2009]

Insert	port lateral topmark	32° 11'.784 S	133° 34'.624 E
--------	----------------------	---------------	----------------

Aus 341 [918/2008]

Insert	port lateral topmark	32° 11'.78 S	133° 34'.62 E
--------	----------------------	--------------	---------------

656* AUSTRALIA - TASMANIA - Port Latta - Lights established
Grange Resources Tasmania (AA406112 - AA406114)

Aus 178 (plan, Port Latta) [537/2008]

Insert	light, <i>F.R</i>	40° 50'.891 S	145° 22'.990 E
	light, <i>F.R</i>	40° 50'.790 S	145° 23'.021 E
	light, <i>F.R</i>	40° 50'.688 S	145° 23'.056 E
	light, <i>F.R</i>	40° 50'.585 S	145° 23'.096 E
	light, <i>F.R</i>	40° 50'.480 S	145° 23'.132 E
	light, <i>F.R</i>	40° 50'.377 S	145° 23'.171 E
	light, <i>F.R</i>	40° 50'.274 S	145° 23'.207 E
	light, <i>F.R</i>	40° 50'.170 S	145° 23'.246 E
	light, <i>F.R</i>	40° 50'.034 S	145° 23'.244 E
	light, <i>F.R</i>	40° 50'.054 S	145° 23'.338 E
	light, <i>F.RG. 5M</i> , with sectors	40° 50'.068 S	145° 23'.281 E
	<i>Green</i> 105° - 285° (180°)		
	<i>Red</i> 285° to 105° (180°)		

Aus 790 [610/2009]

Insert	light, <i>F.RG. 5M</i> , with sectors	40° 50'.07 S	145° 23'.28 E
	<i>Green</i> 105° - 285° (180°)		
	<i>Red</i> 285° to 105° (180°)		

657* AUSTRALIA - VICTORIA - Port Phillip - Buoys altered
Port of Melbourne Corporation (AA401841, AA401868, AA401870)

Aus 155 [426/2009]

Insert	special spar buoy, without topmark	37° 53'.20 S	144° 57'.20 E
	special spar buoy, without topmark	37° 53'.60 S	144° 56'.30 E
	special spar buoy, without topmark	37° 54'.46 S	144° 57'.16 E
Substitute	special spar buoy, without topmark for buoy	37° 53'.6 S	144° 57'.1 E
	special spar buoy, without topmark for buoy	37° 53'.8 S	144° 58'.5 E
	special spar buoy, without topmark for buoy	37° 55'.4 S	144° 57'.4 E
	special spar buoy, without topmark for buoy	37° 55'.8 S	144° 59'.1 E
	special spar buoy, without topmark for buoy	37° 56'.1 S	144° 59'.4 E
	special spar buoy, without topmark for buoy	37° 56'.6 S	144° 58'.0 E
	special spar buoy, without topmark for buoy	37° 56'.7 S	144° 57'.1 E
	special spar buoy, without topmark for buoy	37° 57'.8 S	144° 58'.9 E
	special spar buoy, without topmark for buoy	37° 58'.8 S	144° 58'.4 E
	special spar buoy, without topmark for buoy	37° 59'.8 S	144° 57'.9 E
Delete	buoy	37° 53'.1 S	144° 57'.3 E
	buoy	37° 53'.5 S	144° 56'.4 E
	buoy	37° 54'.5 S	144° 57'.2 E
	buoy	37° 56'.5 S	144° 58'.2 E

658(T)/2009 AUSTRALIA - NEW SOUTH WALES - Port Stephens - Corrie Island - Shoaling
A Calcutt, NSW Maritime (AA409479)

Shoaling exists between positions 32° 40'.35 S 152° 07'.86 E and 32° 40'.26 S 152° 08'.10 E.

Mariners are advised to navigate with caution in the area.

Chart temporarily affected - Aus 209 - AU433152

659(T)/2009 AUSTRALIA - QUEENSLAND - Gold Coast Seaway - Shoaling

Former Notice - 599(T)/2008 is cancelled
Maritime Safety Queensland Notice 344(T)/2009 (AA409133)

An area of shoal water runs across the seaway entrance approximately 200m east northeast of the seaway south wall and is slowly moving northward across the line of the centre line leads (255°).

The shoal area has a least depth of 3.3m LAT and use of the centre line leads should be avoided at low tide by deep draft vessels. Breaking waves may be experienced at this location during the ebb tide or when seas rise above 1.4m.

Deepest water (over 3.8m) is found when navigating the seaway using the southern approach leads (291°).

Mariners are advised to navigate with caution in the area.

Chart temporarily affected - Aus 814

660(T)/2009 AUSTRALIA - QUEENSLAND - Moreton Bay - North East Channel - Light buoys off station

Former Notices - 80(T)/2009, 433(T)/2009 are cancelled
Maritime Safety Queensland Notices 10(T)/2009, 191(T)/2009, 350(T)/2009 (AA379978, AA397826, AA409803)

Light buoys NE2 (26° 57'.99 S 153° 20'.57 E (WGS84 datum)), NE6 (27° 00'.90 S 153° 20'.43 E) and NE8 (27° 02'.3 S 153° 20'.8 E) are off station.

Chart temporarily affected - Aus 235 - Aus 236 - Aus 814

661(T)/2009 AUSTRALIA - QUEENSLAND - Moreton Bay - Redland Bay - Light beacon destroyed

Maritime Safety Queensland Notice 340(T)/2009 (AA409168)

The south cardinal light beacon (27° 36'.75 S 153° 19'.01 E) has been destroyed; a south cardinal light buoy, *Q(6) & LFl. 15s*, exists in situ.

Chart temporarily affected - Aus 236

662(T)/2009 AUSTRALIA - QUEENSLAND - Moreton Bay - Cleveland Point - Light beacon unlit

Maritime Safety Queensland Notice 339(T)/2009 (AA409170)

The light beacon (27° 30'.47 S 153° 17'.62 E) is unlit.

Chart temporarily affected - Aus 236

663(T)/2009 AUSTRALIA - QUEENSLAND - Pumicestone Channel - Light buoy off station

Maritime Safety Queensland Notice 331(T)/2009 (AA408565)

The port lateral light buoy, *Fl.R.2.5s* (26° 48'.54 S 153° 07'.93 E), is off station.

Chart temporarily affected - Aus 235

664(T)/2009 AUSTRALIA - QUEENSLAND - Shoalwater Bay - Live firing*Date - Until 17 June 2009*

Maritime Safety Queensland Notice 308(T)/2009 (AA406348)

Live firing activities will be conducted in the Shoalwater Bay training area during the period 15 to 16 June 2009.

A marine danger area extends to all waters south of the line defined by the following positions (WGS84 datum):

Sabina Point 22° 23'.84 S 150° 18'.02 E

Old Kiever 22° 27'.02 S 150° 34'.98 E

All waters, creeks, beaches and other areas within the declared marine danger area are not available for access.

Mariners are advised to keep clear of this area throughout the above times.

Chart temporarily affected - Aus 260 - Aus 261 - Aus 367 - Aus 822 - AX 60260 - AX 67261 - AU423150 - AU5261P2

665(T)/2009 AUSTRALIA - QUEENSLAND - Saumarez Reefs - South West Cay - Wreck

Maritime Safety Queensland Notice 328(T)/2009 (AA408566)

A wreck exists in position 21° 51'.3 S 153° 31'.4 E.

Mariners are advised to navigate with caution in the area.

Chart temporarily affected - Aus 426 - Aus 612

666(T)/2009 AUSTRALIA - QUEENSLAND - Hay Point - Diving operations completed*Former Notice - 563(T)/2009 is cancelled*

Maritime Safety Queensland Notice 250(T)/2009 (AA401626)

Cancel this notice on receipt.

Chart formerly affected - Aus 249 - Aus 250 - AU5250P2

667(T)/2009 AUSTRALIA - QUEENSLAND - Airlie Beach - Abel Point - Wreck

Maritime Safety Queensland Notice 332(T)/2009 (AA408578)

A wreck marked by a special light buoy exists in position 20° 15'.60 S 148° 42'.45 E.

Mariners are advised to navigate with caution in the area.

Chart temporarily affected - Aus 252 - Aus 253 - Aus 268 - AU5268P2

668(T)/2009 AUSTRALIA - QUEENSLAND - Bowen - Dalrymple Point - Wreck salvaged*Former Notice - 1079(T)/2007 is cancelled*

Maritime Safety Queensland Notice 348/2009 (AA409130)

Cancel this notice on receipt.

Chart formerly affected - Aus 268

669(T)/2009 AUSTRALIA - QUEENSLAND - Townsville - Ross River - Dredging operations completed*Former Notice - 444(T)/2009 is cancelled*

Maritime Safety Queensland Notice 211(T)/2009 (AA398677)

Cancel this notice on receipt.

Chart formerly affected - Aus 256 - Aus 257 - AU5XX257

670(T)/2009 AUSTRALIA - QUEENSLAND - Halifax Bay - Live firing completed

Former Notice - 565(T)/2009 is cancelled
Department of Defence RAAF (AA402753)

Cancel this notice on receipt.

Chart formerly affected - Aus 256 - Aus 827 - Aus 828 - AU419146 - AU420146

671(T)/2009 AUSTRALIA - TORRES STRAIT - Madge Reefs - Reef delineation

Maritime Safety Queensland (DHDB 1241905)

Madge Reefs, between positions 10° 35'.71 S 142° 13'.24 E (WGS84 datum) and 10° 35'.23 S 142° 14'.38 E, have been found to lie 50m to 100m NW of charted position.

Mariners are advised to navigate with caution in the area.

Chart temporarily affected - Aus 292 - Aus 293 - Aus 299 - AU5XX299

672(T)/2009 AUSTRALIA - TIMOR SEA - Van Cloon Shoal - Seismic survey completed southeastwards

Former Notice - 268(T)/2009 is cancelled
Albers Group (AA388163)

Cancel this notice on receipt.

Chart formerly affected - Aus 315 - Aus 318 - Aus 4721 (INT 721) - AX 0315F - AX 4721F - AU313126 - AU313127 - AU414126

673(T)/2009 AUSTRALIA - WESTERN AUSTRALIA - Packer Island to North Head - Scientific instruments

Former Notice - 269(T)/2009 is cancelled
Date - Until 31 July 2009
MetOcean Engineers (AA407165)

Scientific instruments exist as follows:

<i>Position</i>	<i>Remarks</i>
16° 29'.56 S 122° 21'.91 E	subsurface
16° 47'.23 S 122° 32'.18 E	subsurface

Chart temporarily affected - Aus 323

674(T)/2009 AUSTRALIA - WESTERN AUSTRALIA - Lacepede Channel to Cape Boileau - Scientific instruments

Former Notice - 270(T)/2009 is cancelled
Date - Until 31 July 2009
MetOcean Engineers (AA407165)

Scientific instruments exist as follows (WGS84 datum):

<i>Position</i>	<i>Remarks</i>
17° 13'.93 S 122° 05'.06 E	subsurface
17° 28'.27 S 122° 05'.03 E	subsurface
17° 30'.07 S 121° 53'.45 E	subsurface
17° 43'.53 S 122° 02'.03 E	subsurface

Chart temporarily affected - Aus 323 - Aus 324

675(T)/2009 AUSTRALIA - WESTERN AUSTRALIA - Cape Latouche Treville - Scientific instrument recovered
Former Notice - 271(T)/2009 is cancelled
 MetOcean Engineers (AA407165)

Cancel this notice on receipt.

Chart formerly affected - Aus 324

676(T)/2009 AUSTRALIA - WESTERN AUSTRALIA - Port Hedland - Light beacon restored
Former Notice - 887(T)/2008 is cancelled
 Port Hedland Port Authority Notice 6/2009 (AA408186)

Cancel this notice on receipt.

Chart formerly affected - Aus 54

677(T)/2009 AUSTRALIA - WESTERN AUSTRALIA - Port Hedland - Light established
 Port Hedland Port Authority Notice 6/2009 (AA408186)

A light, *Q.Bu*, exists in position 20° 18'.97 S 118° 34'.04 E.

Chart temporarily affected - Aus 54 - AU5XXX54

678(T)/2009 AUSTRALIA - WESTERN AUSTRALIA - Dampier - King Bay - Harbour works
Date - Until 15 June 2009
 Dampier Port Authority Notice 17/2009 (AA408604)

Works associated with the removal of the old breakwater (20° 37'.52 S 116° 45'.01 E (WGS84 datum)) are in progress.

The barge *Hippopotoes* is onsite.

Mariners are requested to contact King Bay Supply Base (KBSB) radio on VHF Ch 82 prior to undertaking movements in the KBSB.

Chart temporarily affected - Aus 58 - Aus 59

679(T)/2009 AUSTRALIA - WESTERN AUSTRALIA - Rankin Bank - Scientific instruments
 MetOcean Engineers (AA407165)

Scientific instruments exist as follows:

<i>Position</i>	<i>Remarks</i>
19° 51'.96 S 115° 17'.10 E	subsurface
19° 52'.00 S 115° 15'.99 E	subsurface
19° 53'.01 S 115° 16'.54 E	subsurface
19° 56'.12 S 115° 22'.85 E	subsurface
19° 56'.59 S 115° 22'.87 E	lit buoy, <i>F(5)Y.20s</i>
19° 56'.60 S 115° 23'.00 E	5 poly floats

Chart temporarily affected - Aus 328 - AU320115

680(T)/2009 AUSTRALIA - WESTERN AUSTRALIA - North West Cape - FPSO off station
Date - Until 30 September 2009
 Apache Energy Ltd (AA410103)

The FPSO Ningaloo Vision (21° 24'.21 S 114° 05'.25 E (WGS84 datum)) is off station.

Chart temporarily affected - Aus 328 - Aus 329 - Aus 744 - AU422114

681(T)/2009 AUSTRALIA - WESTERN AUSTRALIA - Point Cloates to Steep Point - Seismic survey

Former Notice - 569(T)/2009 is cancelled

Date - Until 31 August 2009

Searcher Seismic Pty Ltd (AA408606)

MV *Ocean Endeavour* is conducting a survey in the area bounded by 22° 30'.0 S to 26° 30'.0 S and 110° 30'.0 E to 113° 20'.0 E (WGS84 datum).

Chart temporarily affected - Aus 330 - Aus 416 - Aus 4708 (INT 708) - AX 4708F - AU130090

682(T)/2009 AUSTRALIA - SOUTH AUSTRALIA - Port Stanvac - O'Sullivan Beach - Dredging operations completed

Former Notice - 227(T)/2009 is cancelled

Department for Transport, Energy and Infrastructure SA Notice 2/2009 (AA382215)

Cancel this notice on receipt.

Chart formerly affected - Aus 125

683(T)/2009 AUSTRALIA - SOUTH AUSTRALIA - Kangaroo Island - Live firing southeastwards

Former Notice - 519(T)/2009 is cancelled

Date - Until 20 June 2009

Department of Defence RAAF (AA408607)

Military exercise area R282 will be activated for a live firing from 1 to 19 June 2009, within a 25M radius of position 36° 45'.0 S 138° 06'.0 E (WGS84 datum).

Chart temporarily affected - Aus 346 - Aus 347

684(T)/2009 AUSTRALIA - TASMANIA - River Derwent - Flowerpot Point - Pipeline

Date - Until 24 July 2009

Marine and Safety Tasmania Notice M75/2009 (AA408599)

A pipeline is being laid between positions 43° 00'.95 S 147° 19'.76 E and 43° 00'.95 S 147° 20'.10 E.

Works will be marked by flashing lights.

All vessels are required to keep a distance of at least 250m from the pipeline route.

Chart temporarily affected - Aus 171 - Aus 173 - AU444147

685(T)/2009 AUSTRALIA - TASMANIA - Devonport - Depth information

Former Notice - 339(T)/2009 is cancelled

Tasports (AA407405)

Available depths as at 25 May 2009:

<i>Berth</i>	<i>Metres</i>
Entrance Channel	8.0
Swing Basin	8.6
1E	6.5
2E	8.5
3E	7.8
1W	8.0
* 2W	6.3
3W	6.3
4W	9.0

* Indicates new or revised entry.

Chart temporarily affected - Aus 164 - AU5164P1

686(T)/2009 AUSTRALIA - TASMANIA - Burnie - Depth information

Former Notice - 781(T)/2006 is cancelled
 Tasports (AA407405)

Available depths as at 25 May 2009:

<i>Berth</i>	<i>Metres</i>	<i>Remarks</i>
* No 4 Berth	8.0	
* No 5 Berth	10.8	9.4m first 30m outer end, 10.4m for the next 30m
No 6 Berth	10.0	
* No 7 Berth	10.6	

* Indicates new or revised entry.

Chart temporarily affected - Aus 163 - AU5163P1**687(T)/2009 AUSTRALIA - TASMANIA - Grassy Harbour - Lights unlit**

Date - Until 5 July 2009

Marine and Safety Tasmania Notice M77/2009 (AA410646)

Leading lights, *F.G. 11m 2M (occas)* (40° 03'.96 S 144° 03'.03 E) and *F.G. 14m 2M (occas)* (40° 03'.95 S 144° 03'.01 E), are unlit.

Chart temporarily affected - Aus 178 - AU5178P4**688(T)/2009 AUSTRALIA - VICTORIA - Port Phillip - Hobsons Bay - Dredging operations**

Former Notice - 344(T)/2009 is cancelled

Victorian Notice 29(T)/2009 (AA390789)

Cancel this notice on receipt.

Chart formerly affected - Aus 143 - Aus 154 - Aus 155 - AU438144 - AU5XX154

HYDROGRAPHIC REPORTS

<i>Locality</i>	<i>Report</i>	<i>Ship/Authority</i>	<i>Observer</i>
QLD- Tetley Islets Cape York Torres Strait	Height Wrecks Aus 299	HMAS <i>Leeuwin</i> <i>ACV Dame Roma Mitchell</i>	C Clarke
WA- Mary Anne Passage	Platform	OMS <i>Terra Nova</i>	S Anderson

NAVIGATION WARNINGS

The following radio messages have been received during the period to 5 June 2009. Signal copies of these messages may be destroyed. It is recommended that the reprint of Navigational Warnings should be kept in a file or a book divided into areas. Cancellation should be made on receipt of signals and reprints.

Rigs on location other than those listed in the latest Section III summary are the subject of Radio Navigational Warnings. Rigs in transit will not be the subject of Warnings.

AUSCOAST WARNING

- 127 Drill rig *Songa Mercur* in position 19° 15'.55 S 116° 38'.20 E. 2.5M clearance requested.
 128 Special purpose vessel *Jascon 25* conducting pipe laying operations in position 21° 32'.00 S 114° 07'.00 E. 2.5M clearance requested.
 129 Cancelled.
 130 Cancelled.
 131 Cancelled.
 132 Cancelled.
 133 Drill rig *Atwood Eagle* in position 19° 54'.48 S 115° 07'.55 E. 2.5M clearance requested.
 134 Special purpose vessel *Audacia* conducting pipe laying operations between 20° 23'.00 S 116° 45'.00 E and 19° 59'.00 S 115° 22'.00 E. 2.5M clearance requested.
 135 Cancelled.

NAVAREA X WARNINGS

Nil.

Navigational warnings in force as at 050001UTC JUN 09.**Auscoast**

086 089 096 102 103 113 117 118 119 125 127 128 133 134

Navarea X

Nil.

Summary of mobile drilling rigs as at 050001UTC JUN 09.

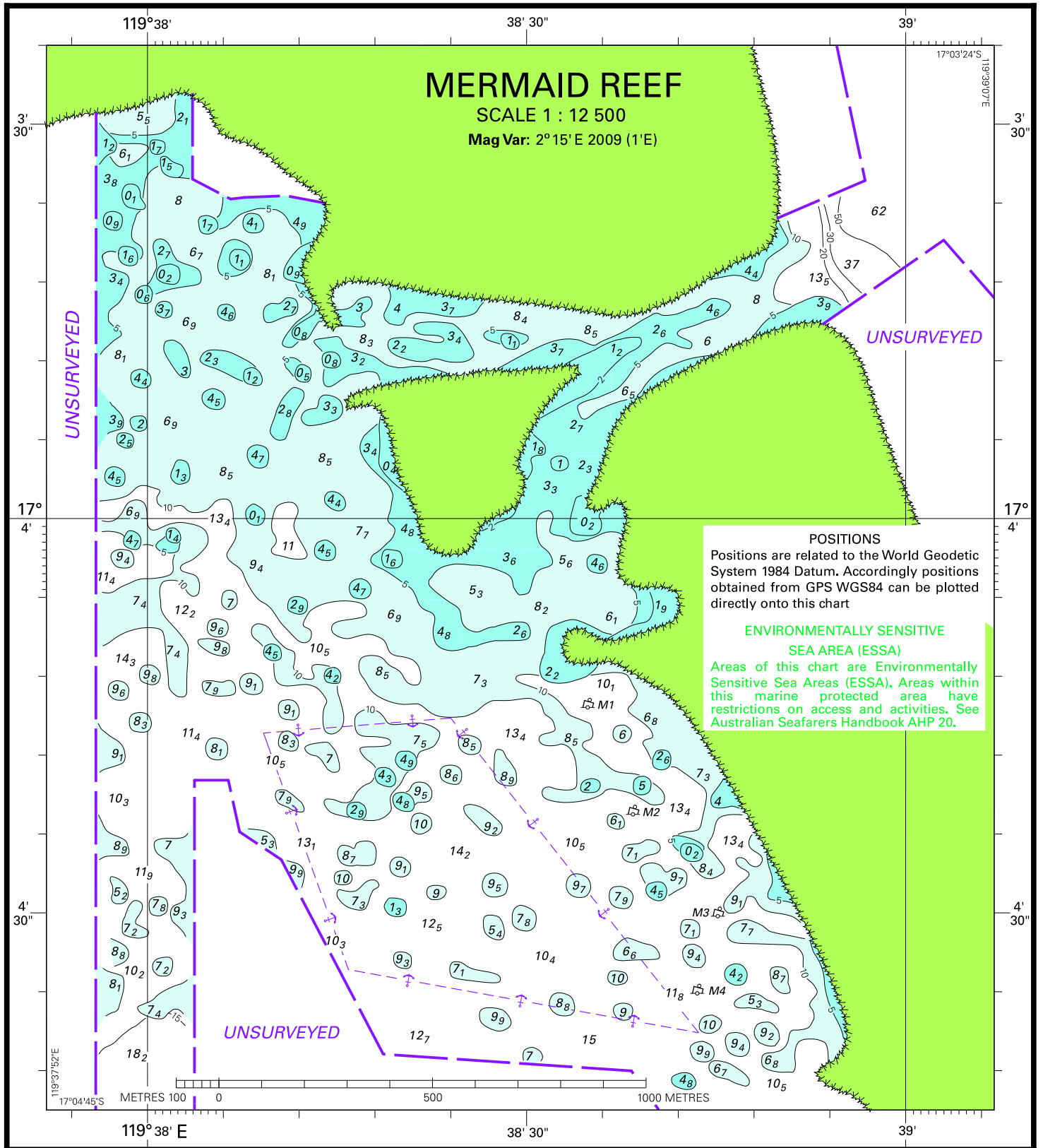
<i>Name</i>	<i>Position</i>
West Atlas	12° 23'.06 S 124° 16'.26 E
Ocean Shield	13° 53'.70 S 128° 29'.00 E
Songa Venus	13° 33'.70 S 123° 25'.20 E
Ensco 7500	19° 52'.00 S 114° 31'.00 E
Atwood Eagle	19° 54'.48 S 115° 07'.55 E
Stena Clyde	20° 04'.18 S 115° 10'.45 E
Ocean Epoch	21° 31'.38 S 114° 06'.59 E

NAVAREA XIV WARNINGS

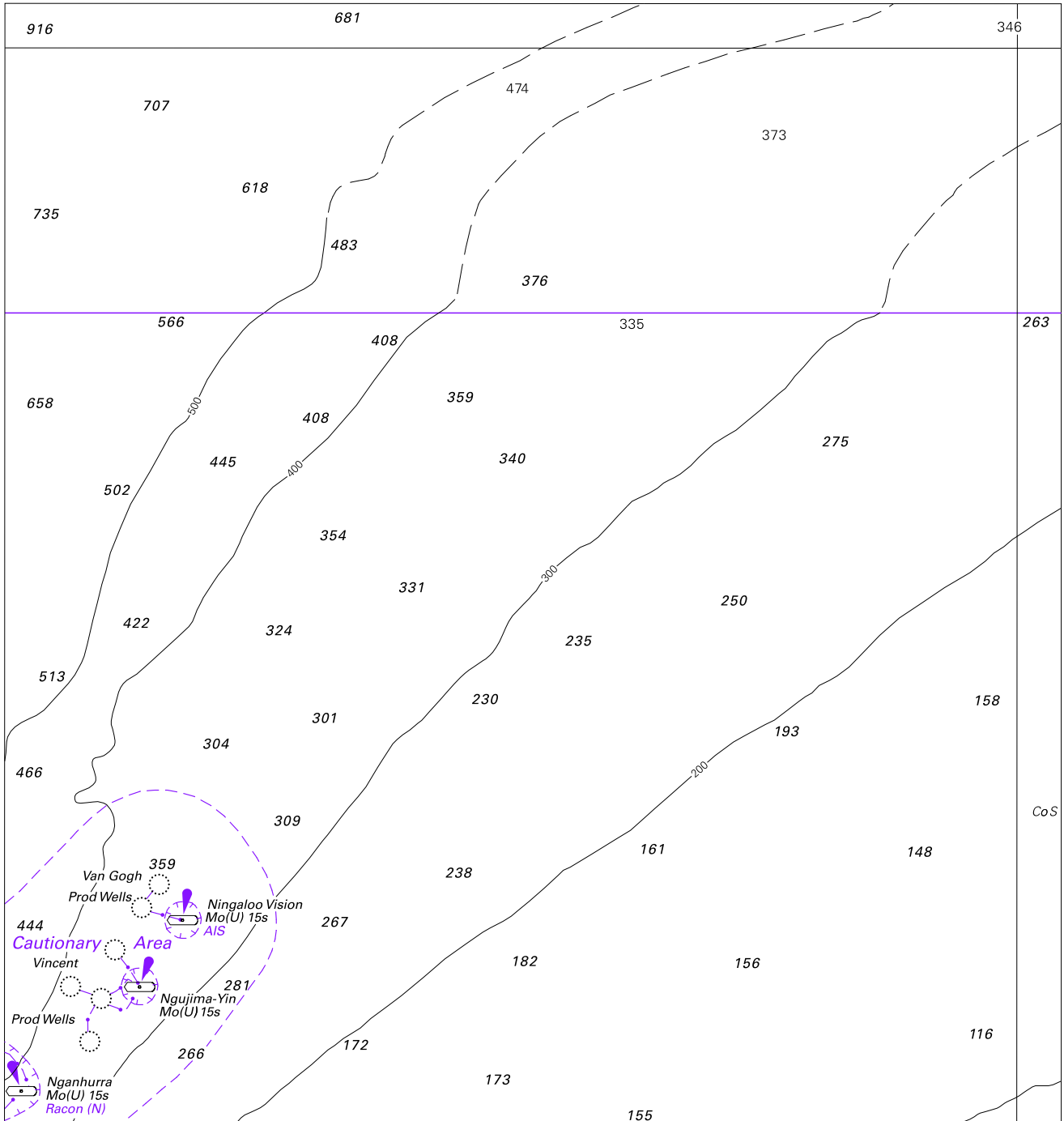
- 025 Cancelled.
 026 Cancelled.
 027 Cancelled.
 028 Fiji. The following lights are unlit:
 Makuluva Islet (K4670) 18° 11'.30 S 178° 31'.20 E
 Beqa Island SW Reef (K4695) 18° 30'.10 S 177° 58'.90 E
 Yaciwa (Coconut) Island (K4735) 18° 08'.24 S 179° 20'.51 E
 Savusavu Bay (Reef Point) (K4744) 16° 49'.89 S 179° 15'.98 E
 Udu Point (K4748) 16° 07'.40 S 179° 57'.00 W.

Navarea XIV warnings in force as at 050001UTC JUN 09.

2009 028



To accompany Australian Notice to Mariners 653/2009



Block for chart Aus 328

© Commonwealth of Australia 2009

(172.6 x 182.6mm)