



Australian Notices to Mariners are the authority for correcting Australian Charts and Publications

---

# AUSTRALIAN NOTICES TO MARINERS

## Notices 584 - 636

Published fortnightly by the Australian Hydrographic Service

Commodore R. NAIRN RAN  
*Hydrographer of Australia*

- 
- |                  |             |  |
|------------------|-------------|--|
| <b>SECTIONS.</b> | <b>I.</b>   | <b>Australian Notices to Mariners, including blocks and notes.</b> |
|                  | <b>II.</b>  | <b>Hydrographic Reports.</b>                                       |
|                  | <b>III.</b> | <b>Navigational Warnings.</b>                                      |

For Notices affecting Admiralty List of Lights and Fog Signals; List of Radio Signals; and Sailing Directions see [British Notices to Mariners](#).

---

*The substance of these notices should be inserted on the charts affected.*

*Bearings are referred to the true compass and are reckoned clockwise from North; those relating to lights are given as seen by an observer from seaward. Positions quoted in permanent notices relate to the horizontal datum for the chart(s). When preliminary or temporary notices affect multiple charts, positions will be provided in relation to only one horizontal datum and that datum will be specified. When the multiple charts do not have a common horizontal datum, mariners will be required to adjust the position(s) for those charts not on the specified datum. The range quoted for a light is its nominal range. Depths are with reference to the chart datum of each chart. Heights are above mean high water springs or mean higher high water, as appropriate.*

*The capital letter (P) or (T) after the number of any notice denotes a preliminary or temporary notice respectively, which are contained separately at the end of the permanent notices. A star (\*) adjacent to the number of a notice indicates that the notice is based on original information.*

---

**Mariners are particularly requested to notify the AUSTRALIAN HYDROGRAPHIC SERVICE, Locked Bag 8801 Wollongong, NSW 2500 (Fax 02-4223 6599, e-mail [Hydro.NTM@defence.gov.au](mailto:Hydro.NTM@defence.gov.au) or, alternatively by filling in and submitting the [Hydrographic Notes](#) forms located on the web site – [www.hydro.gov.au](http://www.hydro.gov.au)), immediately on the discovery of new dangers or suspected dangers to navigation. For changes or defects in aids to navigation notify AusSAR (Fax 02-6230 6868 or email [rccaus@amsa.gov.au](mailto:rccaus@amsa.gov.au)).**

---

Copies of Australian notices are available free of charge from the Australian Hydrographic Service (AHS) website ([www.hydro.gov.au](http://www.hydro.gov.au)) and through the eNotices (email) service ([www.hydro.gov.au/enotices/enotices.htm](http://www.hydro.gov.au/enotices/enotices.htm)).

Individual Notices may be copied for the purpose of inserting Notice substance on official charts and publications. Paper copies may be printed by chart agents and distributed to customers on a cost recovery basis. Participating chart agents are listed on the AHS website as providing a 'Paper Notices to Mariners' service ([www.hydro.gov.au/prodserv/distributors/distributors.htm](http://www.hydro.gov.au/prodserv/distributors/distributors.htm)). Copies of the notices may not be sold for profit without prior written agreement.

---

### IMPORTANT NOTICE

This edition of Notices to Mariners includes all significant information affecting AHS products which the AHS has become aware of since the last edition. All reasonable efforts have been made to ensure the accuracy and completeness of the information, including third party information, on which these updates are based. The AHS regards third parties from which it receives information as reliable, however the AHS cannot verify all such information and errors may therefore exist. The AHS does not accept liability for errors in third party information.

---

© Commonwealth of Australia 2009

This work is copyright. Apart from any use permitted under the Copyright Act 1968, no part may be reproduced by any process, adapted, communicated or commercially exploited without prior written permission from The Commonwealth represented by the Australian Hydrographic Service.

## NUMERICAL INDEX OF NOTICES TO MARINERS

### Edition No 10

Notices	Aus Chart, INT Chart, ENC Cell
584.....	Aus 220, 230, 240, 241, 363, 489, 812
585.....	Aus 807
586.....	Aus 191
587.....	Aus 198, 199
588.....	Aus 809, AX 0809E
589.....	Aus 209
590.....	Aus 219
591.....	Aus 610
592.....	Aus 236
593.....	Aus 247
594.....	Aus 270
595.....	Aus 835
596.....	Aus 683
597.....	Aus 293
598.....	Aus 308, 442
599.....	Aus 24, 26, AX 72026
600.....	Aus 318, 727, 728
601.....	Aus 323, 324
602.....	Aus 53, 739, 740
603.....	Aus 55, 56
604.....	Aus 58
605.....	Aus 744
606.....	Aus 112, 754, AX 0754E, 63112, 66002
607.....	Aus 762
608.....	Aus 778
609.....	Aus 127, 347
610.....	Aus 163, 164, 422, 487, 790, 799
611.....	Aus 163
612.....	Aus 143, 144, 158, 349, 422, 487, 788
613.....	Aus 182
614(T).....	Aus 193, 807, 808, AX 0808E, 60193, 67192, 70193, AU436150, 5XX193
615(T).....	Aus 198, 199, AU5198X9
616(P).....	Aus 197, 365, 386, 387, 388, 396, 423, 424, 426, 462, 809, 4060, 4601, 4602, 4603, 4604, 4620, 4621, 4622, AX 0809E, 4603F, 4604F, 4620F, 4621F, INT 60, 601, 602, 603, 604, 620, 621, 622, AU130120, 130150, 160150, 210150, 220150, 230150, 305146, 308150, 308151, 334152, 406146, 406147, 407147, 407148, 407149, 407150, 434151
617(T).....	Aus 361, 809
618(T).....	Aus 813, 814
619(T).....	Aus 814
620(P).....	Aus 235
621(T).....	Aus 235
622(T).....	Aus 245, AU5244X5
623(T).....	Aus 265, AU5247P1
624(T).....	Aus 247, AU5247P2
625(T).....	Aus 260, 261, 367, 822, AX 60260, AU423150, 5261P1, 5261P2
626(T).....	Aus 260, 367, 822, AX 60260, AU423150
627(T).....	Aus 249, 250, AU5250P2
628(T).....	Aus 258, AU5258P1
629(T).....	Aus 263, 264, AU5262X4
630(T).....	Aus 57
631(T).....	Aus 57, 58
632(T).....	Aus 328, 329, 744, AU422114
633(T).....	Aus 137, AU5137X8
634(T).....	Aus 171
635(T).....	Aus 154, AU5XX154
636(T).....	Aus 154, AU5XX154

## NUMERICAL INDEX OF CHARTS AFFECTED

## Edition No 10

Aus Chart	Notices	Aus Chart	Notices
Aus 24.....	599	Aus 396 .....	616(P)
Aus 26.....	599	Aus 422 .....	610, 612
Aus 53.....	602	Aus 423 .....	616(P)
Aus 55.....	603	Aus 424 .....	616(P)
Aus 56.....	603	Aus 426 .....	616(P)
Aus 57.....	630(T), 631(T)	Aus 442 .....	598
Aus 58.....	604, 631(T)	Aus 462 .....	616(P)
Aus 112.....	606	Aus 487 .....	610, 612
Aus 127.....	609	Aus 489 .....	584
Aus 137.....	633(T)	Aus 610 .....	591
Aus 143.....	612	Aus 683 .....	596
Aus 144.....	612	Aus 727 .....	600
Aus 154.....	635(T), 636(T)	Aus 728 .....	600
Aus 158.....	612	Aus 739 .....	602
Aus 163.....	610, 611	Aus 740 .....	602
Aus 164.....	610	Aus 744 .....	605, 632(T)
Aus 171.....	634(T)	Aus 754 .....	606
Aus 182.....	613	Aus 762 .....	607
Aus 191.....	586	Aus 778 .....	608
Aus 193.....	614(T)	Aus 788 .....	612
Aus 197.....	616(P)	Aus 790 .....	610
Aus 198.....	587, 615(T)	Aus 799 .....	610
Aus 199.....	587, 615(T)	Aus 807 .....	585, 614(T)
Aus 209.....	589	Aus 808 .....	614(T)
Aus 219.....	590	Aus 809 .....	588, 616(P), 617(T)
Aus 220.....	584	Aus 812 .....	584
Aus 230.....	584	Aus 813 .....	618(T)
Aus 235.....	620(P), 621(T)	Aus 814 .....	618(T), 619(T)
Aus 236.....	592	Aus 822 .....	625(T), 626(T)
Aus 240.....	584	Aus 835 .....	595
Aus 241.....	584	Aus 4060 .....	616(P)
Aus 245.....	622(T)	Aus 4601 .....	616(P)
Aus 247.....	593, 624(T)	Aus 4602 .....	616(P)
Aus 249.....	627(T)	Aus 4603 .....	616(P)
Aus 250.....	627(T)	Aus 4604 .....	616(P)
Aus 258.....	628(T)	Aus 4620 .....	616(P)
Aus 260.....	625(T), 626(T)	Aus 4621 .....	616(P)
Aus 261.....	625(T)	Aus 4622 .....	616(P)
Aus 263.....	629(T)	AX 0754E .....	606
Aus 264.....	629(T)	AX 0808E .....	614(T)
Aus 265.....	623(T)	AX 0809E .....	588, 616(P)
Aus 270.....	594	AX 4603F.....	616(P)
Aus 293.....	597	AX 4604F.....	616(P)
Aus 308.....	598	AX 4620F.....	616(P)
Aus 318.....	600	AX 4621F.....	616(P)
Aus 323.....	601	AX 60193.....	614(T)
Aus 324.....	601	AX 60260.....	625(T), 626(T)
Aus 328.....	632(T)	AX 63112.....	606
Aus 329.....	632(T)	AX 66002.....	606
Aus 347.....	609	AX 67192.....	614(T)
Aus 349.....	612	AX 70193.....	614(T)
Aus 361.....	617(T)	AX 72026.....	599
Aus 363.....	584		
Aus 365.....	616(P)		
Aus 367.....	625(T), 626(T)		
Aus 386.....	616(P)		
Aus 387.....	616(P)		
Aus 388.....	616(P)		

INT Chart	Notices
INT 60 .....	616(P)
INT 601 .....	616(P)
INT 602 .....	616(P)
INT 603 .....	616(P)
INT 604 .....	616(P)
INT 620 .....	616(P)
INT 621 .....	616(P)
INT 622 .....	616(P)
ENC Cell	Notices
AU130120 .....	616(P)
AU130150 .....	616(P)
AU160150 .....	616(P)
AU210150 .....	616(P)
AU220150 .....	616(P)
AU230150 .....	616(P)
AU305146 .....	616(P)
AU308150 .....	616(P)
AU308151 .....	616(P)
AU334152 .....	616(P)
AU406146 .....	616(P)
AU406147 .....	616(P)
AU407147 .....	616(P)
AU407148 .....	616(P)
AU407149 .....	616(P)
AU407150 .....	616(P)
AU422114 .....	632(T)
AU423150 .....	625(T), 626(T)
AU434151 .....	616(P)
AU436150 .....	614(T)
AU5137X8 .....	633(T)
AU5XX154 .....	635(T), 636(T)
AU5XX193 .....	614(T)
AU5198X9 .....	615(T)
AU5244X5 .....	622(T)
AU5247P1 .....	623(T)
AU5247P2 .....	624(T)
AU5250P2 .....	627(T)
AU5258P1 .....	628(T)
AU5261P1 .....	625(T)
AU5261P2 .....	625(T)
AU5262X4 .....	629(T)



**Chart permanently withdrawn**

Chart *On publication of new chart*

Aus 220 Aus 220  
Aus 241 Aus 241  
Aus 812 Aus 812

**Chart permanently withdrawn without replacement**

Chart  
Aus 363

For further details refer to the AHS website at [www.hydro.gov.au](http://www.hydro.gov.au) for new edition and new chart stock arrival information.

When placing orders with a chart agent, mariners should advise whether their order pertains to the current edition or the new edition.

**585\* AUSTRALIA - NEW SOUTH WALES - Burrewarra Point - Fish aggregating device established eastwards**

Department of Primary Industries (AA404303, AA402185)

**Aus 807 [353/2009]**

Insert	special conical light buoy, <i>Fl.Y.5s</i> ( <i>Dec - Apr</i> ), with topmark	35° 50'.00 S	150° 22'.63 E
--------	---	--------------	---------------

**586\* AUSTRALIA - NEW SOUTH WALES - Batemans Bay - Buoys established; light buoys repositioned; light altered**

NSW Maritime (AA235739, AA299449, AA404645)

**Aus 191 (plan, Batemans Bay) [529/2009]**

Insert	special spar buoy, without topmark	35° 42'.415 S	150° 12'.525 E
	starboard lateral conical light buoy, <i>Fl.G.3s</i> , without topmark	35° 41'.798 S	150° 10'.582 E
	special spar buoy, without topmark	35° 42'.885 S	150° 12'.536 E
	special spar buoy, without topmark	35° 43'.598 S	150° 12'.124 E
	special spar buoy, without topmark	35° 43'.703 S	150° 12'.189 E
	special spar buoy, without topmark	35° 43'.982 S	150° 12'.863 E
	special spar buoy, without topmark	35° 42'.810 S	150° 14'.679 E
	special spar buoy, without topmark	35° 44'.633 S	150° 15'.370 E
Move	light buoy	35° 43'.11 S	150° 12'.04 E
	to	35° 43'.121 S	150° 11'.966 E
	light buoy	35° 42'.86 S	150° 11'.52 E
	to	35° 43'.018 S	150° 11'.728 E
Amend	light to <i>Q.R</i>	35° 42'.46 S	150° 10'.79 E
Delete	depth, 1 <sub>3</sub> m	35° 43'.66 S	150° 12'.18 E
	depth, 1m	35° 43'.57 S	150° 12'.10 E
	depth, 14 <sub>3</sub> m	35° 44'.58 S	150° 15'.39 E

**Aus 191 (plan, Batemans Bay Marina)**

Insert	special spar buoy, without topmark	35° 42'.885 S	150° 12'.536 E
	special spar buoy, without topmark	35° 43'.598 S	150° 12'.124 E
Move	light buoy	35° 43'.11 S	150° 12'.04 E
	to	35° 43'.121 S	150° 11'.966 E
	light buoy	35° 42'.86 S	150° 11'.52 E
	to	35° 43'.018 S	150° 11'.728 E

**587\* AUSTRALIA - NEW SOUTH WALES - Botany Bay - Kurnell - Light established**  
Sydney Ports Corporation (AA403304 - AA403307)

**Aus 198 [404/2009]**

Insert	light, <i>F.AI.WRG.3s</i>	34° 00'.086 S	151° 12'.568 E
	dashed line with legend, <i>Dir 207.4°</i> , between	34° 00'.086 S	151° 12'.568 E
		33° 59'.815 S	151° 12'.740 E

**Aus 199 [404/2009]**

Insert	light, <i>F.AI.WRG.3s 12m</i>	34° 00'.086 S	151° 12'.568 E
	dashed line with legend, <i>Dir 207.4°</i> , between	34° 00'.086 S	151° 12'.568 E
		33° 59'.815 S	151° 12'.740 E

**588\* AUSTRALIA - NEW SOUTH WALES - Broken Bay to Nobbys Head - Fish aggregating device established; legends**  
Department of Primary Industries (AA404303, AA402185)

**Aus 809 [182/2009]**

Insert	special conical light buoy, <i>Fl.Y.5s (Dec - Apr)</i> , with topmark	32° 55'.33 S	151° 59'.94 E
Amend	legend to <i>(Sep - Jun)</i>	33° 10'.1 S	151° 48'.6 E
	legend to <i>(Sep - Jun)</i>	33° 30'.1 S	151° 38'.0 E
	legend to <i>(Sep - Jun)</i>	33° 35'.6 S	151° 34'.9 E
	legend to <i>(Sep - Jun)</i>	33° 47'.2 S	151° 23'.4 E

**AX 0809E [182/2009]**

Insert	special conical light buoy, <i>Fl.Y.5s (Dec - Apr)</i> , with topmark	32° 55'.33 S	151° 59'.94 E
Amend	legend to <i>(Sep - Jun)</i>	33° 10'.1 S	151° 48'.6 E
	legend to <i>(Sep - Jun)</i>	33° 30'.1 S	151° 38'.0 E
	legend to <i>(Sep - Jun)</i>	33° 35'.6 S	151° 34'.9 E
	legend to <i>(Sep - Jun)</i>	33° 47'.2 S	151° 23'.4 E

**589\* AUSTRALIA - NEW SOUTH WALES - Port Stephens - Myall River - Buoy repositioned**  
NSW Maritime (AA402301)

**Aus 209 [354/2009]**

Move	buoy	32° 40'.13 S	152° 10'.06 E
	to	32° 40'.133 S	152° 10'.031 E

**590\* AUSTRALIA - NEW SOUTH WALES - Camden Haven - Stingray Creek - Beacon repositioned**  
NSW Maritime (AA402301)

**Aus 219 (plan, Camden Haven) [686/2008]**

Move	beacon	31° 38'.32 S	152° 48'.23 E
	to	31° 38'.348 S	152° 48'.230 E

**591\* AUSTRALIA - NEW SOUTH WALES - Lord Howe Island - Fish aggregating devices established**  
Department of Primary Industries (AA404303, AA402185)

**Aus 610 [137/2009]**

Insert	special conical light buoy, <i>Fl. Y.5s (Sep - Jun)</i> , with topmark	31° 38'.47 S	159° 06'.13 E
	special conical light buoy, <i>Fl. Y.5s (Sep - Jun)</i> , with topmark	31° 28'.11 S	159° 05'.66 E

**592\* AUSTRALIA - QUEENSLAND - Moreton Bay - Macleay Island - Beacon**  
Australian Hydrographic Service (AA403203)

**Aus 236 [286/2009]**

Amend	structure colour to YBY	27° 35'.9 S	153° 21'.0 E
-------	-------------------------	-------------	--------------

**593\* AUSTRALIA - QUEENSLAND - Keppel Bay - Chart limits; plans withdrawn**  
Australian Hydrographic Service (AA394413)

**Aus 247 [185/2009]**

Insert	magenta limits, with legend <i>Aus 265</i> in NE corner, between	23° 35'.5 S	150° 51'.5 E
		23° 21'.5 S	150° 51'.5 E
		23° 21'.5 S	151° 01'.1 E
		23° 35'.5 S	150° 01'.1 E
Delete	magenta limits, with legend See Plan, centred on plan, centred on plan, centred on	23° 32'.0 S	150° 56'.0 E
		23° 28'.0 S	150° 39'.0 E
		23° 17'.0 S	150° 34'.0 E

**594\* AUSTRALIA - QUEENSLAND - Channel Rocks - Depth**  
HMAS *Melville* (DHDB 1084831)

**Aus 270 (plan, Cape Melville and Pipon Islets) [1270/2008]**

Insert	depth, <i>12<sub>3</sub>m</i> , and extend contour N to enclose	14° 08'.43 S	144° 28'.76 E
Delete	depth, <i>12<sub>9</sub>m</i>	14° 08'.5 S	144° 28'.9 E

**595\* AUSTRALIA - QUEENSLAND - Cockburn Reef - Depth**  
HMAS *Leeuwin* (AA403569, AA403570)

**Aus 835 [243/2009]**

Substitute	depth, <i>14<sub>9</sub>m</i> , for depth, <i>15<sub>6</sub>m</i>	11° 45'.4 S	143° 14'.5 E
------------	---	-------------	--------------

**596\* PAPUA NEW GUINEA - Anewa Bay - Port limit**  
Australian Hydrographic Service (AA403604)

**Aus 683 (plan, Anewa Bay) [536/2009]**

Insert	dashed magenta line, with legend <i>Port Limit</i> , between	6° 11'.345 S	155° 33'.526 E
		6° 11'.263 S	155° 33'.930 E
Delete	dashed magenta line, with legend <i>Port Limit</i> , between	6° 11'.35 S	155° 33'.53 E
		6° 11'.31 S	155° 33'.93 E

**597\* AUSTRALIA - TORRES STRAIT - Cardale Patch - Depths**  
 HMAS *Melville* (DHDB 1124368)

**Aus 293 [541/2009]**

Insert	accompanying block	10° 35'.0 S	142° 09'.0 E
--------	--------------------	-------------	--------------

**598\* AUSTRALIA - NORTHERN TERRITORY - McCluer Island - Depth**  
 HMAS *Benalla* and *Shepparton* (DHDB 1179898)

**Aus 308 [299/2009]**

Insert	depth, 4 <sub>5</sub> fm, semi enclosed by contour to S	11° 01'.10 S	132° 57'.77 E
--------	---	--------------	---------------

**Aus 442 [245/2009]**

Insert	depth, 4 <sub>5</sub> fm, and extend contour S to enclose	11° 01'.01 S	132° 57'.84 E
--------	---	--------------	---------------

Delete	depth, 5 <sub>5</sub> fm	11° 00'.5 S	132° 58'.0 E
--------	--------------------------	-------------	--------------

**599\* AUSTRALIA - NORTHERN TERRITORY - Darwin - Buoys withdrawn**  
 LCDR D Plummer (AA404866)

**Aus 24 [247/2009]**

Delete	buoy	12° 27'.65 S	130° 49'.48 E
	buoy	12° 27'.65 S	130° 49'.46 E
	buoy	12° 27'.64 S	130° 49'.44 E

**Aus 26 [247/2009]**

Delete	buoy	12° 27'.7 S	130° 49'.5 E
--------	------	-------------	--------------

**AX 72026 [247/2009]**

Delete	buoy	12° 27'.7 S	130° 49'.5 E
--------	------	-------------	--------------

**600\* AUSTRALIA - WESTERN AUSTRALIA - Mary Island - Depths**  
 HMAS *Melville* (DHDB 1109360)

**Aus 318 [850/2008]**

Insert	depth, 5 <sub>4</sub> m, enclosed by contour	13° 57'.58 S	126° 21'.48 E
--------	--	--------------	---------------

Delete	depth, 7 <sub>5</sub> m, and enclosing contour magenta line, between	13° 59'.30 S 13° 58'.7 S 13° 59'.2 S	126° 19'.77 E 126° 20'.7 E 126° 19'.9 E
--------	---	--	---

**Aus 727 [532/2008]**

Insert	depth, 5 <sub>4</sub> m, enclosed by contour	13° 57'.50 S	126° 21'.54 E
	depth, 3 <sub>6</sub> m, semi enclosed by contour to E	13° 57'.82 S	126° 21'.03 E

Delete	depth, 7 <sub>5</sub> m, and enclosing contour	13° 59'.3 S	126° 20'.0 E
	depth, 13m	13° 58'.0 S	126° 21'.2 E
	dashed magenta line, between	13° 58'.6 S 13° 59'.4 S	126° 20'.9 E 126° 20'.3 E

**Aus 728 [850/2008]**

Insert	depth, 5 <sub>7</sub> m, enclosed by contour	13° 57'.50 S	126° 21'.54 E
	depth, 3 <sub>9</sub> m, semi enclosed by contour to E	13° 57'.82 S	126° 21'.03 E

Delete	depth, 7 <sub>8</sub> m, and enclosing contour	13° 59'.3 S	126° 20'.0 E
	depth, 13 <sub>3</sub> m	13° 58'.0 S	126° 21'.2 E
	dashed magenta line, between	13° 58'.5 S 13° 59'.8 S	126° 21'.0 E 126° 20'.4 E

**601\* AUSTRALIA - WESTERN AUSTRALIA - Lacepede Islands - West Island - Historic wreck**  
Western Australia Museum (AA355803, AA402364)

**Aus 323 [1128/2008]**

Insert	stranded wreck, with magenta legend <i>Historic Wk</i> (see Note)	16° 51'.40 S	122° 07'.70 E
	accompanying Historic Wreck note	17° 06'.0 S	124° 19'.0 E

**Aus 324 [249/2009]**

Insert	stranded wreck, with magenta legend <i>Historic Wk</i> (see Note)	16° 51'.48 S	122° 07'.62 E
	accompanying Historic Wreck note	19° 51'.0 S	121° 19'.0 E

**602\* AUSTRALIA - WESTERN AUSTRALIA - Port Hedland - Fish aggregating devices withdrawn**  
Total Electrical Communication Services (AA402180)

**Aus 53 [1180/2008]**

Delete	FAD	20° 00'.9 S	118° 20'.8 E
--------	-----	-------------	--------------

**Aus 739 [1230/2008]**

Delete	FAD	20° 00'.9 S	118° 20'.8 E
--------	-----	-------------	--------------

**Aus 740 [153/2009]**

Delete	FAD	20° 00'.9 S	118° 20'.8 E
	FAD	20° 11'.3 S	118° 15'.9 E

**603\* AUSTRALIA - WESTERN AUSTRALIA - Port Walcott - Light buoys established**  
Port Walcott Pilots (AA378883, AA404627 - AA404629)

**Aus 55 [153/2009]**

Insert	starboard lateral pillar light buoy, <i>Fl.G.2s No 29</i> , without topmark	20° 34'.17 S	117° 12'.37 E
	port lateral pillar light buoy, <i>Fl.R.2s No 30</i> , without topmark	20° 34'.29 S	117° 12'.60 E

**Aus 56 [153/2009]**

Insert	starboard lateral pillar light buoy, <i>Fl.G.2s No 29</i> , without topmark	20° 34'.17 S	117° 12'.37 E
	port lateral pillar light buoy, <i>Fl.R.2s No 30</i> , without topmark	20° 34'.29 S	117° 12'.60 E

**604\* AUSTRALIA - WESTERN AUSTRALIA - Dampier Archipelago - Anchor; legend**  
UKHO (AA402124)

**Aus 58 [420/2009]**

Delete	anchor symbol	20° 23'.75 S	116° 41'.37 E
	magenta legend, Port	20° 20'.46 S	116° 43'.44 E

**605\* AUSTRALIA - WESTERN AUSTRALIA - Muiron Islands - Production wells; production platform established  
northwestwards**

*Former Notice - 543(T)/2007 is cancelled*  
Apache Energy Ltd (AA395640, AA395641, AA395643, AA395645 - AA395647)

**Aus 744 [546/2009]**

Insert	accompanying block	21° 18'.0 S	114° 10'.0 E
--------	--------------------	-------------	--------------

**606\* AUSTRALIA - WESTERN AUSTRALIA - Rottnest Island - Depths**

Department for Planning and Infrastructure WA (AA404502)

**Aus 112 [199/2009]**

Insert	depth, 12 <sub>5</sub> m	31° 58'.20 S	115° 33'.00 E
	depth, 17 <sub>2</sub> m, enclosed by contour	31° 58'.07 S	115° 30'.98 E
Substitute	depth, 1 <sub>5</sub> m, for depth 2 <sub>1</sub> m	31° 59'.97 S	115° 28'.09 E
Delete	displaced sounding, 11 <sub>3</sub> m	31° 58'.19 S	115° 33'.02 E
	displaced sounding, 14 <sub>3</sub> m, and enclosing contour	31° 58'.66 S	115° 32'.76 E
	depth, 20 <sub>1</sub> m	31° 58'.12 S	115° 30'.98 E

**Aus 754 [253/2009]**

Insert	depth, 12 <sub>7</sub> m	31° 58'.20 S	115° 33'.00 E
	depth, 17 <sub>4</sub> m, and extend contour N to enclose	31° 58'.07 S	115° 30'.98 E
Substitute	depth, 1 <sub>7</sub> m, for depth 2 <sub>3</sub> m	32° 00'.0 S	115° 28'.1 E
Delete	depth, 11 <sub>5</sub> m	31° 58'.2 S	115° 33'.0 E
	depth, 19 <sub>6</sub> m	31° 58'.2 S	115° 30'.9 E

**AX 0754E [253/2009]**

Insert	depth, 12 <sub>7</sub> m	31° 58'.20 S	115° 33'.00 E
	depth, 17 <sub>4</sub> m, and extend contour N to enclose	31° 58'.07 S	115° 30'.98 E
Substitute	depth, 1 <sub>7</sub> m, for depth 2 <sub>3</sub> m	32° 00'.0 S	115° 28'.1 E
Delete	depth, 11 <sub>5</sub> m	31° 58'.2 S	115° 33'.0 E
	depth, 19 <sub>6</sub> m	31° 58'.2 S	115° 30'.9 E

**AX 63112 [199/2009]**

Insert	depth, 12 <sub>5</sub> m	31° 58'.20 S	115° 33'.00 E
	depth, 17 <sub>2</sub> m, enclosed by contour	31° 58'.07 S	115° 30'.98 E
Substitute	depth, 1 <sub>5</sub> m, for depth 2 <sub>1</sub> m	31° 59'.97 S	115° 28'.09 E
Delete	displaced sounding, 11 <sub>3</sub> m	31° 58'.19 S	115° 33'.02 E
	displaced sounding, 14 <sub>3</sub> m, and enclosing contour	31° 58'.66 S	115° 32'.76 E
	depth, 20 <sub>1</sub> m	31° 58'.12 S	115° 30'.98 E

**AX 66002 [253/2009]**

Insert	depth, 12 <sub>7</sub> m	31° 58'.20 S	115° 33'.00 E
	depth, 17 <sub>4</sub> m, and extend contour N to enclose	31° 58'.07 S	115° 30'.98 E
Substitute	depth, 1 <sub>7</sub> m, for depth 2 <sub>3</sub> m	32° 00'.0 S	115° 28'.1 E
Delete	depth, 11 <sub>5</sub> m	31° 58'.2 S	115° 33'.0 E
	depth, 19 <sub>6</sub> m	31° 58'.2 S	115° 30'.9 E

**607\* AUSTRALIA - WESTERN AUSTRALIA - Douglass Patch to Mondrain Island - Contour value; light buoy**

Department for Planning and Infrastructure WA (AA352748, AA352749, AA312367), UKHO (AA402129)

**Aus 762 [371/2009]**

Amend	contour value to 20	34° 07'.8 S	122° 15'.4 E
	contour value to 20	34° 06'.6 S	122° 14'.7 E
Delete	topmark	34° 00'.0 S	121° 54'.0 E

**608\* AUSTRALIA - SOUTH AUSTRALIA - Spencer Gulf - Light buoys established**

Former Notice - 571(P)/2009 is cancelled

Auscoast Warning 114/2009, 115/2009 (AA405117, AA405118), Australian Maritime Safety Authority ATH 15/2009 (AA406892)

**Aus 778 [549/2009]**

Insert	starboard lateral pillar light buoy, <i>Fl(2)G.5s SG4</i> , with topmark	33° 34'.91 S	137° 32'.50 E
	port lateral pillar light buoy, <i>Fl(2)R.5s SG5</i> , with topmark	33° 24'.30 S	137° 29'.00 E
Delete	depth, 22m	33° 24'.2 S	137° 29'.4 E

**609\* AUSTRALIA - SOUTH AUSTRALIA - Cape Jaffa - Light beacon established**

Department for Transport, Energy and Infrastructure SA Notice 25/2009 (AA402230)

**Aus 127 (plan, Port Caroline to Robe) [644/2008]**

Insert	starboard lateral light beacon, <i>Fl.G.3s 3M</i> , with topmark	36° 56'.19 S	139° 41'.83 E
Delete	depth, 0 <sub>9</sub> m	36° 56'.2 S	139° 41'.9 E

**Aus 347 [1134/2008]**

Insert	starboard lateral light beacon, <i>Fl.G.3s 3M</i> , with topmark	36° 56'.19 S	139° 41'.83 E
--------	--	--------------	---------------

**610\* AUSTRALIA - TASMANIA - Port Sorell to Rocky Cape - Lights altered; light beacon established**

Former Notices - 523(P)/2009, 524(P)/2009, 525(P)/2009 are cancelled

Auscoast Warning 116/2009 (AA405236), Auscoast Warning 122/2009 (AA406099),

Australian Maritime Safety Authority ATH 11/2009 (AA403627), Marine and Safety Tasmania Notice M67/2009 (AA403068, AA403358, AA403359)

**Aus 163 [551/2009]**

Amend	light range to 16/13M	41° 03'.90 S	145° 57'.72 E
-------	-----------------------	--------------	---------------

**Aus 164 [1084/2008]**

Amend	light range to 15/12M	41° 09'.51 S	146° 21'.33 E
-------	-----------------------	--------------	---------------

**Aus 422 [490/2009]**

Amend	light range to 15/12M	41° 09'.5 S	146° 21'.2 E
	light range to 16/13M	41° 03'.9 S	145° 57'.7 E
	light range to 16M	40° 51'.3 S	145° 30'.5 E

**Aus 487 [375/2009]**

Amend	light range to 15/12M	41° 09'.5 S	146° 21'.2 E
	light range to 16/13M	41° 03'.9 S	145° 57'.7 E
	light range to 16M	40° 51'.3 S	145° 30'.5 E

**Aus 790 [491/2009]**

Amend	light range to 16M	40° 51'.3 S	145° 30'.5 E
-------	--------------------	-------------	--------------

**Aus 799 [551/2009]**

Insert	port lateral light beacon, <i>Fl.R.5s 2M</i> , with topmark	41° 08'.28 S	146° 33'.55 E
Amend	light range to 15/12M	41° 09'.5 S	146° 21'.3 E
	light range to 16/13M	41° 03'.9 S	145° 57'.7 E
	light range to 16M	40° 51'.3 S	145° 30'.5 E

**611\* AUSTRALIA - TASMANIA - Burnie - Maintained depth limit**  
Tasports, UKHO (AA405014)

**Aus 163 [610/2009]**

Insert	dashed line, between	41° 02'.999 S	145° 54'.899 E
		41° 02'.925 S	145° 55'.016 E

**Aus 163 (plan, Port of Burnie)**

Insert	accompanying block	41° 03'.0 S	145° 55'.0 E
--------	--------------------	-------------	--------------

**612\* AUSTRALIA - VICTORIA - Port Phillip - Lights**

Former Notices - 341(P)/2009, 400(P)/2009 are cancelled

Victorian Notice 28(P)/2009, 31(P)/2009, 59/2009, 65/2009 (AA389351, AA390544, AA402404, AA405234)

**Aus 143 [553/2009]**

Insert	light, <i>F.AI.WR.3s 12m 6/4M</i>	38° 16'.62 S	144° 37'.10 E
	a dashed line in a direction 106° for a distance of 1.43M, thence a continuous line for 4M, with legend <i>Dir 286°</i> , emanating from light	38° 16'.62 S	144° 37'.10 E
	light, <i>F.WRG.21m 6/4M</i>	38° 16'.28 S	144° 38'.64 E
	green light sector 325° to 342.8° (17.8°), at light	38° 17'.5 S	144° 36'.8 E
Amend	light to <i>LFI(2)WRG.15s 37m 12/10M</i>	38° 17'.5 S	144° 36'.8 E

**Aus 144 [425/2009]**

Insert	light, <i>F.AI.WR.3s 12m 6/4M</i>	38° 16'.624 S	144° 37'.098 E
	a dashed line in a direction 106° for a distance of 2650m, thence a continuous line for 7350m, with legend <i>Dir 286°</i> , emanating from light	38° 16'.624 S	144° 37'.098 E
	light, <i>F.WRG.21m 6/4M</i>	38° 16'.282 S	144° 38'.636 E
	a dashed line in a direction 221.6° for a distance of 1510m, thence a continuous line for 8490m, with legend <i>Dir 041.6°</i> , emanating from light	38° 16'.404 S	144° 39'.532 E
Amend	light to <i>Iso.WR.2s 19m 12/10M &amp; F.WR.6/4M Fort West Bn</i>	38° 16'.40 S	144° 39'.50 E
	light sectors to	38° 16'.43 S	144° 39'.56 E
	<i>Red 241° to 252° (11°)</i>		
	<i>White 252° to 260° (8°)</i>		
	<i>Green 260° to 267° (7°)</i>		
	<i>Red 267° to 315.7° (48.7°)</i>		
	<i>White 315.7° to 356° (40.3°)</i>		
	<i>Red 356° to 032° (36°)</i>		
	<i>White 032° to 046° (14°)</i>		
	light to <i>LFI(2)WRG.15s 37m 12/10M</i> with sectors	38° 17'.52 S	144° 36'.83 E
	<i>White 266° to 272° (6°)</i>		
	<i>Red 272° to 325° (53°)</i>		
	<i>Green 325° to 342.8° (17.8°)</i>		
	<i>White 342.8° to 069° (86.2°)</i>		
	<i>Red 069° to 110° (41°)</i>		

**612\* AUSTRALIA - VICTORIA - Port Phillip – Lights (continued)****Aus 158 [425/2009]**

Insert	light, <i>F.AI.WR.3s 12m 6/4M</i>	38° 16'.624 S	144° 37'.098 E
	a dashed line in a direction 106° for a distance of 2650m, thence a continuous line for 7350m, with legend <i>Dir 286°</i> , emanating from light	38° 16'.624 S	144° 37'.098 E
	light, <i>F.WRG.21m 6/4M</i>	38° 16'.282 S	144° 38'.636 E
Amend	light sectors to	38° 16'.4 S	144° 39'.6 E
	<i>Red 241° to 252° (11°)</i>		
	<i>White 252° to 260° (8°)</i>		
	<i>Green 260° to 267° (7°)</i>		
	<i>Red 267° to 315.7° (48.7°)</i>		
	<i>White 315.7° to 356° (40.3°)</i>		
	<i>Red 356° to 032° (36°)</i>		
	<i>White 032° to 046° (14°)</i>		
	light to <i>LFI(2)WRG.15s 37m 12/10M</i> with sectors	38° 17'.5 S	144° 36'.8 E
	<i>White 266° to 272° (6°)</i>		
	<i>Red 272° to 325° (53°)</i>		
	<i>Green 325° to 342.8° (17.8°)</i>		
	<i>White 342.8° to 069° (86.2°)</i>		
	<i>Red 069° to 110° (41°)</i>		

**Aus 349 [255/2009]**

Insert	green light sector 325° to 342.8° (17.8°), at light	38° 17'.6 S	144° 36'.7 E
Amend	light to <i>LFI(2)WRG.15s 12/10M</i>	38° 17'.6 S	144° 36'.7 E

**Aus 422 [610/2009]**

Amend	light to <i>LFI(2)WRG.12/10M</i>	38° 17'.2 S	144° 36'.7 E
-------	----------------------------------	-------------	--------------

**Aus 487 [610/2009]**

Amend	light to <i>LFI(2)WRG.12/10M</i>	38° 17'.5 S	144° 36'.8 E
-------	----------------------------------	-------------	--------------

**Aus 788 [162/2009]**

Insert	green light sector 325° - 342.8° (17.8°), at light	38° 17'.5 S	144° 36'.8 E
Amend	light to <i>LFI(2)WRG.15s 37m 12/10M</i>	38° 17'.5 S	144° 36'.8 E

**613\* AUSTRALIA - VICTORIA - Port Welshpool - Lewis Channel - Light beacon**

Australian Hydrographic Service (AA404133)

**Aus 182 (plan, Lewis Channel) [494/2009]***On certain copies only*

Delete	light beacon	38° 42'.23 S	146° 25'.95 E
--------	--------------	--------------	---------------

**614(T)/2009 AUSTRALIA - NEW SOUTH WALES - Jervis Bay - Bowen Island - Scientific instruments***Former Notice* - 495(T)/2009 is cancelled*Date* - Until 17 July 2009

Geoscience Australia (AA405411)

Subsurface scientific instruments exist in positions 35° 06'.2 S 150° 45'.9 E and 35° 05'.9 S 150° 44'.6 E.

**Chart temporarily affected - Aus 193 - Aus 807 - Aus 808 - AX 0808E - AX 60193 - AX 67192 - AX 70193 - AU436150 - AU5XX193****615(T)/2009 AUSTRALIA - NEW SOUTH WALES - Botany Bay - Scientific instruments recovered***Former Notice* - 497(T)/2009 is cancelled

Cardno Lawson Treloar (AA405647)

Cancel this notice on receipt.

**Chart formerly affected - Aus 198 - Aus 199 - AU5198X9****616(P)/2009 PACIFIC OCEAN - Sydney, Madang, Guam - Submarine cable***Date* - On or about 3 August 2009

National Maritime Safety Authority PNG Notice 30/2009 (AA405883), Tyco Telecommunications (AA403608 - AA403613)

Cable ship *Tyco Durable* will be laying a submarine cable between the following positions:

5° 11'.31 S	146° 30'.24 E
6° 31'.60 S	148° 27'.86 E
7° 00'.14 S	150° 35'.97 E
8° 22'.43 S	154° 04'.60 E
8° 25'.15 S	154° 53'.89 E
9° 44'.52 S	156° 16'.47 E
9° 46'.80 S	156° 41'.46 E
10° 12'.80 S	156° 48'.19 E
10° 44'.75 S	156° 42'.08 E
11° 55'.84 S	155° 05'.61 E
12° 37'.32 S	154° 44'.87 E
14° 39'.32 S	154° 34'.20 E
17° 14'.67 S	154° 51'.82 E
17° 30'.05 S	154° 49'.21 E
18° 09'.54 S	154° 12'.62 E
18° 55'.26 S	154° 16'.17 E
19° 36'.40 S	154° 55'.39 E
22° 02'.52 S	155° 43'.38 E
23° 39'.33 S	154° 58'.09 E
24° 14'.57 S	155° 01'.04 E
25° 15'.51 S	154° 37'.85 E
27° 40'.00 S	154° 51'.43 E
28° 44'.08 S	155° 11'.78 E
29° 49'.33 S	155° 13'.40 E
31° 44'.23 S	154° 13'.43 E
32° 26'.54 S	154° 24'.93 E
33° 12'.84 S	153° 48'.67 E
33° 15'.49 S	153° 15'.46 E
33° 36'.81 S	152° 41'.50 E
33° 44'.10 S	152° 04'.35 E
33° 43'.72 S	151° 17'.54 E

**616(P)/2009 PACIFIC OCEAN - Sydney, Madang, Guam - Submarine cable (continued)**

A submarine cable exists between the following positions (WGS84 datum):

1° 02'.50 N	145° 56'.38 E
0° 45'.44 N	145° 51'.70 E
0° 50'.76 S	145° 57'.18 E
1° 55'.25 S	145° 38'.81 E
2° 17'.97 S	145° 36'.93 E
4° 32'.43 S	146° 32'.98 E
5° 11'.31 S	146° 30'.24 E

*Note:* Charting action will be undertaken on receipt of as laid positions.

**Chart which will be affected - Aus 197 - Aus 365 - Aus 386 - Aus 387 - Aus 388 - Aus 396 - Aus 423 - Aus 424 - Aus 426 - Aus 462 - Aus 809 - AX 0809E - AX 4603F - AX 4604F - AX 4620F - AX 4621F - Aus 4060 (INT 60) - Aus 4601 (INT 601) - Aus 4602 (INT 602) - Aus 4603 (INT 603) - Aus 4604 (INT 604) - Aus 4620 (INT 620) - Aus 4621 (INT 621) - Aus 4622 (INT 622) - AU130120 - AU130150 - AU160150 - AU210150 - AU220150 - AU230150 - AU305146 - AU308150 - AU308151 - AU334152 - AU406146 - AU406147 - AU407147 - AU407148 - AU407149 - AU407150 - AU434151**

**617(T)/2009 AUSTRALIA - NEW SOUTH WALES - Broken Bay - Fish aggregating devices recovered eastwards**

*Former Notice* - 483(T)/2007 is cancelled  
Broken Bay Game Fishing Club (AA406190)

Cancel this notice on receipt.

**Chart formerly affected - Aus 361 - Aus 809**

**618(T)/2009 AUSTRALIA - QUEENSLAND - Point Danger to Nerang Head - Scientific instruments**

*Former Notice* - 209(T)/2009 is cancelled  
Maritime Safety Queensland Notice 291(T)/2009 (AA405399)

Special light buoys, *Fl(5)Y.20s*, exist in positions (WGS84 datum):

28° 10'.84 S	153° 34'.58 E
27° 57'.93 S	153° 26'.53 E.

Mariners are not to use these buoys as moorings.

**Chart temporarily affected - Aus 813 - Aus 814**

**619(T)/2009 AUSTRALIA - QUEENSLAND - Southport - Dredging operations**

*Date* - Until 15 July 2009  
Maritime Safety Queensland Notice 295(T)/2009 (AA405778)

The dredge *Port Frederick* is conducting dredging operations in the North Channel (27° 55'.5 S 153° 25'.0 E (WGS84 datum)) and West Crab Island Channel (27° 54'.2 S 153° 24'.5 E).

The dredge will monitor VHF Ch 16 and Ch 67.

The dredge will transport the spoil close to shore off Main Beach (27° 58'.66 S 153° 25'.92 E).

Mariners are advised to navigate with caution in the area.

**Chart temporarily affected - Aus 814**

**620(P)/2009 AUSTRALIA - QUEENSLAND - Caloundra - Rock outcrop**  
 Maritime Safety Queensland Notice 294(T)/2009 (AA405382)

A rock outcrop is reported to exist between positions 26° 45'.04 S 153° 10'.64 E and 26° 45'.32 S 153° 10'.76 E, with least depth 14.4m LAT.

Mariners are advised to navigate with caution in the area.

**Chart which will be affected - Aus 235**

**621(T)/2009 AUSTRALIA - QUEENSLAND - Mooloolaba - Shoaling**

*Former Notice* - 504(T)/2009 is cancelled  
 Maritime Safety Queensland Notice 302(T)/2009 (AA406140)

Shoaling, with a least depth of 2.3m (LAT), exists within the Mooloolah River channel. Lesser depths of 2.1m exist adjacent to the eastern breakwater No 2 beacon (26° 40'.75 S 153° 07'.96 E (WGS84 datum)). A shoal patch with a least depth of 2.3m exists in the vicinity of position 26° 40'.81 S 153° 07'.86 E.

Mariners are advised to navigate with caution in the area.

**Chart temporarily affected - Aus 235**

**622(T)/2009 AUSTRALIA - QUEENSLAND - Gladstone - Scientific instruments**

*Former Notice* - 506(T)/2009 is cancelled  
*Date* - Until 1 November 2009  
 Maritime Safety Queensland Notice 246(T)/2009, 301(T)/2009 (AA401380, AA406141)

Scientific instruments marked by special spherical light buoys, *Fl.Y.4s*, exist in positions:

23° 48'.23 S 151° 12'.56 E  
 23° 47'.83 S 151° 17'.32 E  
 23° 46'.49 S 151° 11'.19 E  
 23° 45'.27 S 151° 09'.82 E  
 23° 46'.76 S 151° 10'.17 E  
 23° 46'.70 S 151° 10'.62 E  
 23° 46'.91 S 151° 11'.78 E  
 23° 47'.79 S 151° 10'.83 E  
 23° 44'.89 S 151° 10'.03 E  
 23° 46'.72 S 151° 10'.60 E  
 23° 46'.96 S 151° 11'.76 E  
 23° 44'.91 S 151° 09'.96 E

An unmarked scientific instrument exists in position 23° 47'.91 S 151° 12'.68 E.

**Chart temporarily affected - Aus 245 - AU5244X5**

**623(T)/2009 AUSTRALIA - QUEENSLAND - Port Alma - Depth information***Former Notice - 167(T)/2009 is cancelled*

Maritime Safety Queensland Notice 137(T)/2007 (AA232314)

Available depths as at 27 February 2007:

<i>Berth</i>	<i>Metres</i>
Balaclava Leads	7.6
Kazatch Leads	7.0
Eupatoria Leads	7.9
Shell Point Leads	7.0
Swing Basin	5.8
Berth No 1	9.2
Berth No 2	9.2
Berth No 3	9.2

\* Indicates revised entry.

**Chart temporarily affected - Aus 265 - AU5247P1****624(T)/2009 AUSTRALIA - QUEENSLAND - Rosslyn Bay - Dredging operations***Date - Until 24 August 2009*

Maritime Safety Queensland Notice 290(T)/2009 (AA405393)

The dredge *Faucon* and support vessel are conducting dredging operations in Rosslyn Bay boat harbour (23° 09'.7 S 150° 47'.2 E).

The dredge will display appropriate lights and signals and monitor VHF Ch 16 and Ch 21.

Mariners are advised to navigate with caution in the area.

**Chart temporarily affected - Aus 247 - AU5247P2****625(T)/2009 AUSTRALIA - QUEENSLAND - Shoalwater Bay - Live firing completed***Former Notices - 327(T)/2009, 441(T)/2009, 509(T)/2009, 561(T)/2009 are cancelled*

Maritime Safety Queensland Notice 144(T)/2009, 155(T)/2009, 199(T)/2009, 241(T)/2009 (AA390767, AA394481, AA397903, AA400815)

Cancel this notice on receipt.

**Chart formerly affected - Aus 260 - Aus 261 - Aus 367 - Aus 822 - AX 60260 - AU423150 - AU5261P1 - AU5261P2****626(T)/2009 AUSTRALIA - QUEENSLAND - Shoalwater Bay - Live firing***Date - Until 6 July 2009*

Maritime Safety Queensland Notice 307(T)/2009 (AA406346)

Live firing activities will be conducted in the Shoalwater Bay training area during the period 2 June to 5 July 2009.

A marine danger area extends to all waters south of the line defined by the following positions:

South Bank Oyster Creek	Point 6-1	22° 30'.73 S	150° 26'.34 E
North Bank East Creek	Point 3-6	22° 30'.20 S	150° 33'.89 E

All waters, creeks, beaches and other areas within the declared marine danger area are not available for access.

Mariners are advised to keep clear of this area throughout the above times.

**Chart temporarily affected - Aus 260 - Aus 367 - Aus 822 - AX 60260 - AU423150**

**627(T)/2009 AUSTRALIA - QUEENSLAND - Hay Point - Drilling operations completed***Former Notice - 1149(T)/2008 is cancelled*

Maritime Safety Queensland Notice 684(T)/2008 (AA367219)

Cancel this notice on receipt.

**Chart formerly affected - Aus 249 - Aus 250 - AU5250P2****628(T)/2009 AUSTRALIA - QUEENSLAND - Mourilyan - Depth information***Former Notice - 665(T)/2008 is cancelled*

Maritime Safety Queensland Notice 297(T)/2009 (AA405772)

Available depths as at 15 May 2009:

*Metres*

Departure Channel	9.6
Inner Channel	9.6
* Swing Basin	6.5
* Sugar Berth	9.1

\* Indicates revised entry.

Shoaling for a distance of 200m to seaward of the berth pocket can develop over time.

**Chart temporarily affected - Aus 258 - AU5258P1****629(T)/2009 AUSTRALIA - QUEENSLAND - Cairns - Smiths Creek - Dredging operations***Date - Until 7 June 2009*

Maritime Safety Queensland Notice 293(T)/2009 (AA405642)

Dredging operations are in progress at Commercial Fishermans Base No1 between jetty A (16° 56'.45 S 145° 46'.68 E) and B (16° 56'.45 S 145° 46'.64 E).

A special light buoy, Q, exists in the vicinity of position 16° 56'.48 S 145° 46'.64 E.

Mariners are advised that entry to this area is prohibited during this period.

**Chart temporarily affected - Aus 263 - Aus 264 - AU5262X4****630(T)/2009 AUSTRALIA - WESTERN AUSTRALIA - Dampier - Goodwyn Island - Buoy established***Date - Until 22 June 2009*

Dampier Port Authority Notice 16/2009 (AA406451)

A special cylindrical buoy exists in position 20° 30'.8 S 116° 29'.4 E.

**Chart temporarily affected - Aus 57****631(T)/2009 AUSTRALIA - WESTERN AUSTRALIA - Dampier - Obstructions removed***Former Notice - 314(T)/2008 is cancelled*

Dampier Port Authority (AA406457)

Cancel this notice on receipt.

**Chart formerly affected - Aus 57 - Aus 58**

**632(T)/2009 AUSTRALIA - WESTERN AUSTRALIA - Muiron Islands - Oil field development northwestwards**

*Former Notice* - 391(T)/2009 is cancelled

*Date* - Until 10 December 2009

BHP Billiton (AA380398, AA380483, AA380655, AA405866, AA405868)

Drill rig *Ocean Epoch* and support vessel *Jascon 25* are undertaking drilling operations for the Pyrenees oil field. An FPSO will be established in position 21° 32'.47 S 114° 06'.98 E (WGS84 datum); presently an unlit detachable turret mooring buoy exists in situ.

Subsea production wells will be established as follows:

Ravensworth North	21° 31'.80 S 114° 05'.13 E
Ravensworth South	21° 32'.31 S 114° 05'.09 E
Crosby North	21° 31'.72 S 114° 06'.08 E
Crosby South	21° 32'.69 S 114° 05'.69 E
Stickle	21° 31'.36 S 114° 06'.59 E
Macedon	21° 34'.03 S 114° 10'.30 E
Ravensworth WI	21° 30'.16 S 114° 05'.72 E
Crosby WI	21° 29'.96 S 114° 07'.61 E
Stickle WI	21° 30'.15 S 114° 08'.69 E

Mariners are advised to navigate with caution in the vicinity.

**Chart temporarily affected - Aus 328 - Aus 329 - Aus 744 - AU422114**

**633(T)/2009 AUSTRALIA - SOUTH AUSTRALIA - Port Adelaide - Depth information**

Department for Transport, Energy and Infrastructure SA Notice 27/2009 (AA406196)

Available depths as at 15 May 2009:

*Metres*

Inner Harbor Berth M	10.3
Outer Harbor Berth 7	13.5
Outer Harbor Berth 8	15.5

**Chart temporarily affected - Aus 137 - AU5137X8**

**634(T)/2009 AUSTRALIA - TASMANIA - Nubeena - Harbour works**

*Date* - Until 31 July 2009

Marine and Safety Tasmania Notice M71/2009 (AA405623)

Harbour works associated with the construction of a new jetty are in progress.

The light (43° 06'.25 S 147° 44'.45 E) is unlit.

**Chart temporarily affected - Aus 171**

**635(T)/2009 AUSTRALIA - VICTORIA - Port Phillip - Williamstown Channel - Light beacon restored**

*Former Notice* - 343(T)/2009 is cancelled

Victorian Notice 64/2009 (AA403435)

Cancel this notice on receipt.

**Chart formerly affected - Aus 154 - AU5XX154**

**636(T)/2009 AUSTRALIA - VICTORIA - Port Phillip - Port Melbourne - River Yarra - Harbour works**

*Former Notice* - 565(T)/2008 is cancelled

*Date* - Until 31 August 2009

Victorian Notice 55(T)/2009 (AA401359)

Works associated with the protection of services across the River Yarra are in progress, between a line joining beacons No 31 and No 32 and a line joining beacons No 37 and No 38B.

Vessels with a beam of less than 11m may transit the works area at any time.

Vessels with a beam of greater than 11m may transit the works area after allowing vessels involved in the works 60 minutes to relocate to the toe of the channel. The transit and movement of large vessels through the area will be coordinated by Melbourne VTS.

Further details regarding the operations can be obtained from the Port of Melbourne Corporation's Channel Deepening website [www.channelproject.com](http://www.channelproject.com) or telephone 1 - 800 731 022.

Mariners are advised to navigate with caution in the area.

**Chart temporarily affected - Aus 154 - AU5XX154**

## HYDROGRAPHIC REPORTS

<i>Locality</i>	<i>Report</i>	<i>Ship/Authority</i>	<i>Observer</i>
QLD- Point Danger to Sandy Cape	Wrecks		T Jackson
NSW- Cape Hawke Port Stephens	FAD Shoaling	<i>SV Fenella</i>	J Gault A Calcutt
NT- Port Essington	Pearl farms	<i>ACV Corio Bay</i>	

**NAVIGATION WARNINGS**

The following radio messages have been received during the period to 22 May 2009. Signal copies of these messages may be destroyed. It is recommended that the reprint of Navigational Warnings should be kept in a file or a book divided into areas. Cancellation should be made on receipt of signals and reprints.

Rigs on location other than those listed in the latest Section III summary are the subject of Radio Navigational Warnings. Rigs in transit will not be the subject of Warnings.

**AUSCOAST WARNING**

- 108 Chervil A platform (21° 18'.5 S 115° 13'.6 E) unlit.
- 109 Cancelled.
- 110 Cancelled.
- 111 Cancelled.
- 112 Cancelled.
- 113 Mersey Bluff light K3550 (41° 09'.53 S 146° 21'.33 E) altered range 15/12M.
- 114 Spencer Gulf SG4 starboard light buoy, Fl(2)G.5s, established in position 33° 34'.90 S 137° 32'.50 E.
- 115 Spencer Gulf SG5 port light buoy, Fl(2)R.5s, established in position 33° 24'.30 S 137° 29'.00 E.
- 116 Round Hill Point light K3535 (41° 03'.91 S 145° 57'.71 E) altered range 16/13M.
- 117 Unlit 15m x 10m detachable turret mooring buoy in position 21° 32' S 114° 07' E until further notice.
- 118 Special purpose vessel *Geo Atlantic* conducting seismic survey towing 4M cable in area 19° 10'.00 S to 19° 30'.00 S and 116° 04'.00 E to 116° 36'.00 E. Clearance requested.
- 119 Drill rig *West Atlas* in position 12° 23'.06 S 124° 16'.26 E. 2.5M clearance requested.
- 120 Drill rig *Atwood Eagle* in position 19° 53'.57 S 115° 06'.48 E. 2.5M clearance requested.
- 121 Uncharted sandwave depth 9.4m in position 10° 28'.78 S 142° 22'.39 E.
- 122 Rocky Cape light K3531 (40° 51'.27 S 145° 30'.50 E) altered range 16M.
- 123 Cancelled.
- 124 Cancelled.
- 125 Bluff Hill light K3677 (41° 01'.11 S 144° 37'.59 E) altered range 16M.
- 126 Special purpose vessel *Tyco Durable* conducting cable laying operations in area 33° 42'.00 S to 33° 45'.00 S and 151° 18'.00 E to 152° 09'.00 E. 2.5M clearance requested.

**NAVAREA X WARNINGS**

Nil.

**Navigational warnings in force as at 220001UTC MAY 09.****Auscoast**

044 048 060 072 086 089 090 096 100 102 103 108 113 114 115 116 117 118 119 120 121 122 125 126

**Navarea X**

Nil.

**Summary of mobile drilling rigs as at 220001UTC MAY 09.**

<i>Name</i>	<i>Position</i>
West Atlas	12° 23'.06 S 124° 16'.26 E
Transocean Legend	14° 21'.75 S 121° 39'.55 E
Ocean Shield	13° 53'.70 S 128° 29'.00 E
Songa Venus	13° 33'.70 S 123° 25'.20 E
Sedco 703	13° 37'.00 S 122° 18'.00 E
Ensco 7500	19° 52'.00 S 114° 31'.00 E
Atwood Eagle	19° 53'.57 S 115° 06'.48 E
Stena Clyde	20° 04'.18 S 115° 10'.45 E
Nan Hai 6	21° 28'.31 S 113° 59'.10 E
Ocean Epoch	21° 31'.38 S 114° 06'.59 E

**NAVAREA XIV WARNINGS**

015 Cancelled.  
016 Cancelled.  
017 Cancelled.  
018 Cancelled.  
019 Cancelled.  
020 Cancelled.  
021 Cancelled.  
022 Cancelled.  
023 Cancelled.  
024 South Pacific. Underwater earthquake activity reported in vicinity 25° 53' S 177° 11' W. Mariners are advised gas may be present at the sea surface and to keep watch for discoloured water.

**Navarea XIV warnings in force as at 220001UTC MAY 09.**

**2009** 024

To accompany Australian Notice to Mariners 601/2009

HISTORIC WRECK

The site of an historic wreck is protected from unauthorised interference. For details see Australian Seafarers Handbook AHP 20.

Note for chart Aus 323

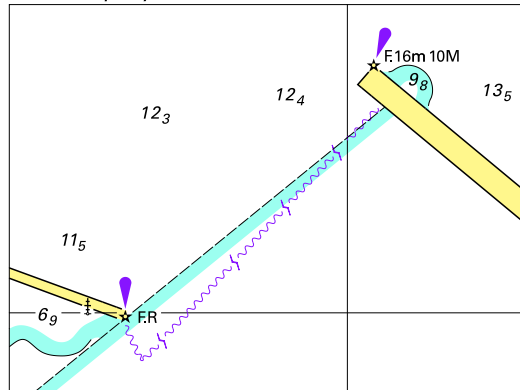
To accompany Australian Notice to Mariners 601/2009

HISTORIC WRECK

The site of an historic wreck is protected from unauthorised interference. For details see Australian Seafarers Handbook AHP 20.

Note for chart Aus 324

To accompany Australian Notice to Mariners 611/2009



© Commonwealth of Australia 2009  
Block for chart Aus163 (68.9 x 51.3mm)



