

To accompany Australian Notice to Mariners 543/2009

HISTORIC WRECK

The site of an historic wreck is protected from unauthorised interference. For details see Australian Seafarers Handbook AHP 20.

Note for chart Aus 22

To accompany Australian Notice to Mariners 543/2009

UNEXPLODED ORDNANCE

The area is safe for surface navigation only; it is not safe for anchoring, trawling or seabed activities. For details see Australian Notice to Mariners No 12.

Note for chart Aus 22

To accompany Australian Notice to Mariners 543/2009

UNEXPLODED ORDNANCE

The area is safe for surface navigation only; it is not safe for anchoring, trawling or seabed activities. For details see Australian Notice to Mariners No 12.

Note for chart Aus 309

To accompany Australian Notice to Mariners 543/2009

UNEXPLODED ORDNANCE

The area is safe for surface navigation only; it is not safe for anchoring, trawling or seabed activities. For details see Australian Notice to Mariners No 12.

Note for chart AX 0309F

To accompany Australian Notice to Mariners 543/2009

UNEXPLODED ORDNANCE

The area is safe for surface navigation only; it is not safe for anchoring, trawling or seabed activities. For details see Australian Notice to Mariners No 12.

Note for chart AX 72309

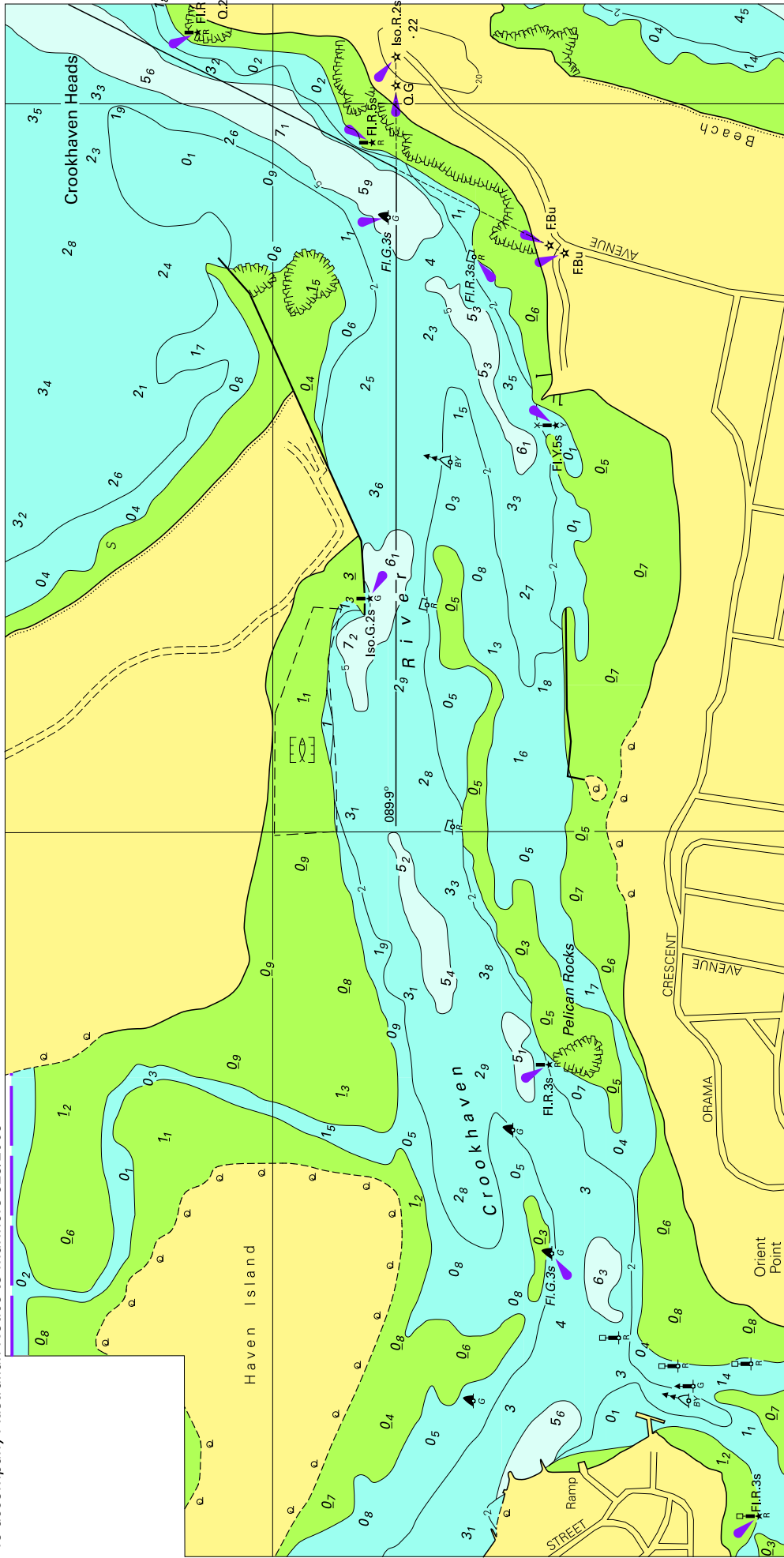
To accompany Australian Notice to Mariners 544/2009

AUSTRALIAN MARITIME JURISDICTION
(AMJ)

The territorial sea baseline and the outer limit of Australian maritime zones shown on this chart are sourced from the Geoscience Australia product Australian Maritime Boundaries (AMB). For Australian maritime boundary information see Australia Seafarers Handbook AHP 20.

Note for chart Aus 729

To accompany Australian Notice to Mariners 529/2009

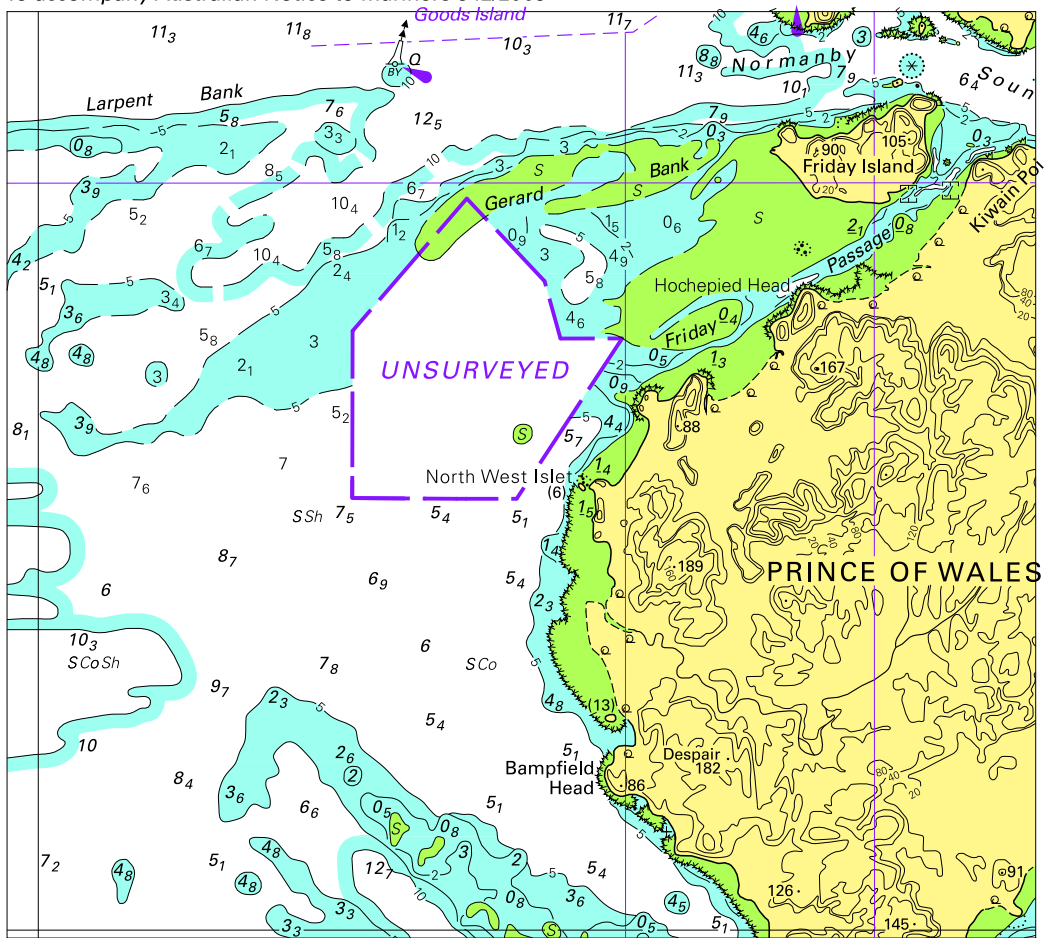


Block for chart Aus 191

© Commonwealth of Australia 2009

(260.0 x 131.2mm)

To accompany Australian Notice to Mariners 542/2009



Block for chart Aus 700

© Commonwealth of Australia 2009

(136.0 x 122.5mm)