

To accompany Australian Notice to Mariners 483/2009

AUSTRALIAN MARITIME JURISDICTION
(AMJ)

The territorial sea baseline and the outer limit of Australian maritime zones shown on this chart are sourced from the Geoscience Australia product Australian Maritime Boundaries (AMB). For Australian maritime boundary information see Australia Seafarers Handbook AHP 20.

Note for chart Aus 717

To accompany Australian Notice to Mariners 485/2009

AUSTRALIAN MARITIME JURISDICTION
(AMJ)

The territorial sea baseline and the outer limit of Australian maritime zones shown on this chart are sourced from the Geoscience Australia product Australian Maritime Boundaries (AMB). For Australian maritime boundary information see Australia Seafarers Handbook AHP 20.

Note for chart Aus 725

To accompany Australian Notice to Mariners 486/2009

AUSTRALIAN MARITIME JURISDICTION
(AMJ)

The territorial sea baseline and the outer limit of Australian maritime zones shown on this chart are sourced from the Geoscience Australia product Australian Maritime Boundaries (AMB). For Australian maritime boundary information see Australia Seafarers Handbook AHP 20.

Note for chart Aus 400

To accompany Australian Notice to Mariners 491/2009

ENVIRONMENTALLY SENSITIVE SEA
AREA (ESSA)

Areas of this chart are Environmentally Sensitive Sea Areas (ESSA). Areas within this marine protected area have restrictions on access and activities. See Australian Seafarers Handbook AHP 20.

Note for chart Aus 790

To accompany Australian Notice to Mariners 491/2009

AUSTRALIAN MARITIME JURISDICTION
(AMJ)

The territorial sea baseline and the outer limit of Australian maritime zones shown on this chart are sourced from the Geoscience Australia product Australian Maritime Boundaries (AMB). For Australian maritime boundary information see Australia Seafarers Handbook AHP 20.

Note for chart Aus 790

To accompany Australian Notice to Mariners 491/2009

ENVIRONMENTALLY SENSITIVE SEA
AREA (ESSA)

Areas of this chart are Environmentally Sensitive Sea Areas (ESSA). Areas within this marine protected area have restrictions on access and activities. See Australian Seafarers Handbook AHP 20.

Note for chart Aus 791

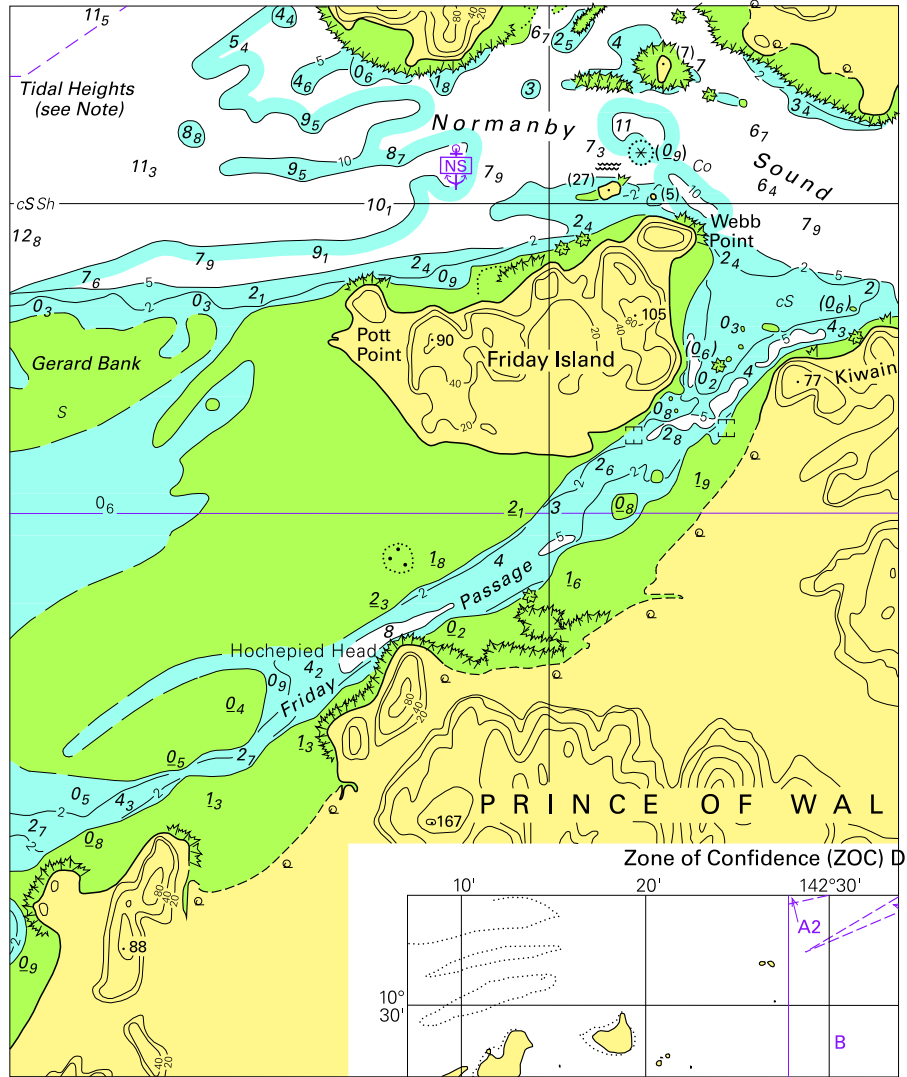
To accompany Australian Notice to Mariners 491/2009

AUSTRALIAN MARITIME JURISDICTION
(AMJ)

The territorial sea baseline and the outer limit of Australian maritime zones shown on this chart are sourced from the Geoscience Australia product Australian Maritime Boundaries (AMB). For Australian maritime boundary information see Australia Seafarers Handbook AHP 20.

Note for chart Aus 791

To accompany Australian Notice to Mariners 481/2009

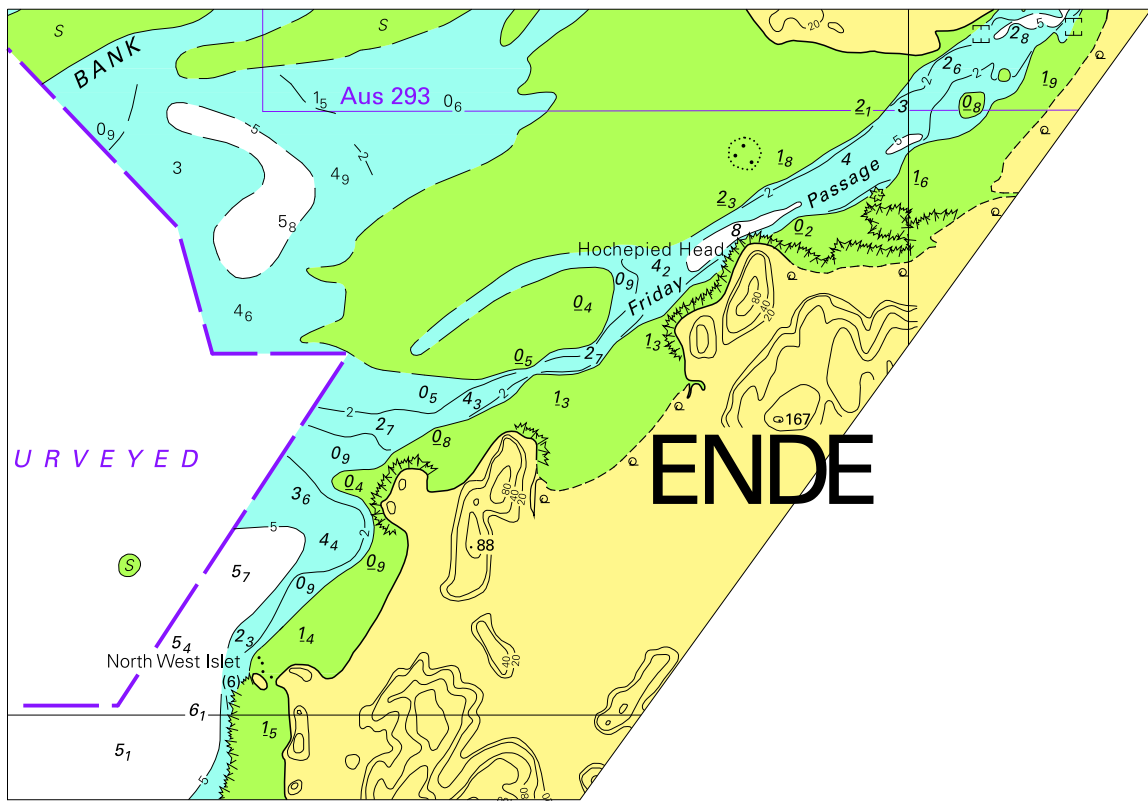


Block for chart Aus 292

© Commonwealth of Australia 2009

(117.5 x 141.7mm)

To accompany Australian Notice to Mariners 481/2009

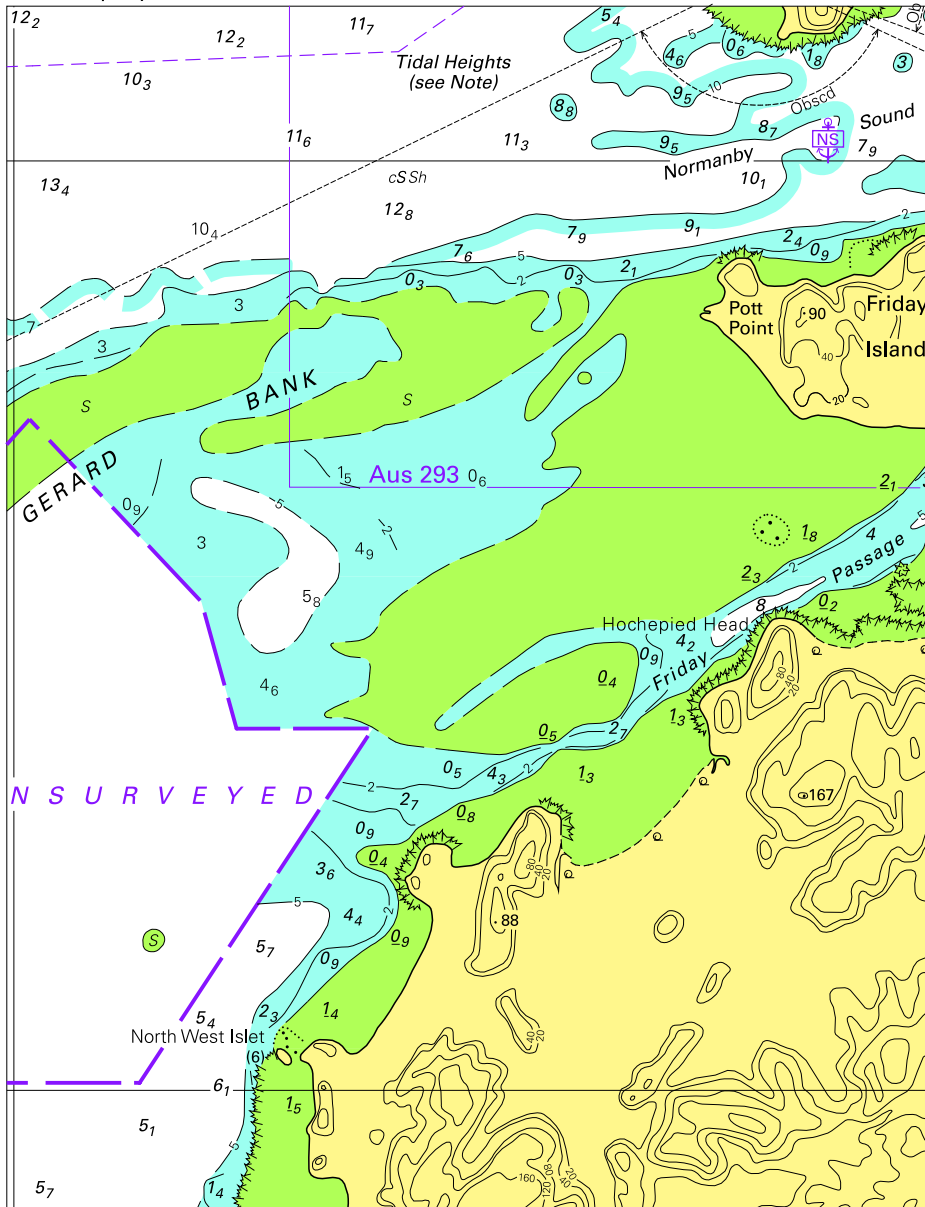


Block for chart Aus 294

© Commonwealth of Australia 2009

(151.3 x 105.4mm)

To accompany Australian Notice to Mariners 481/2009

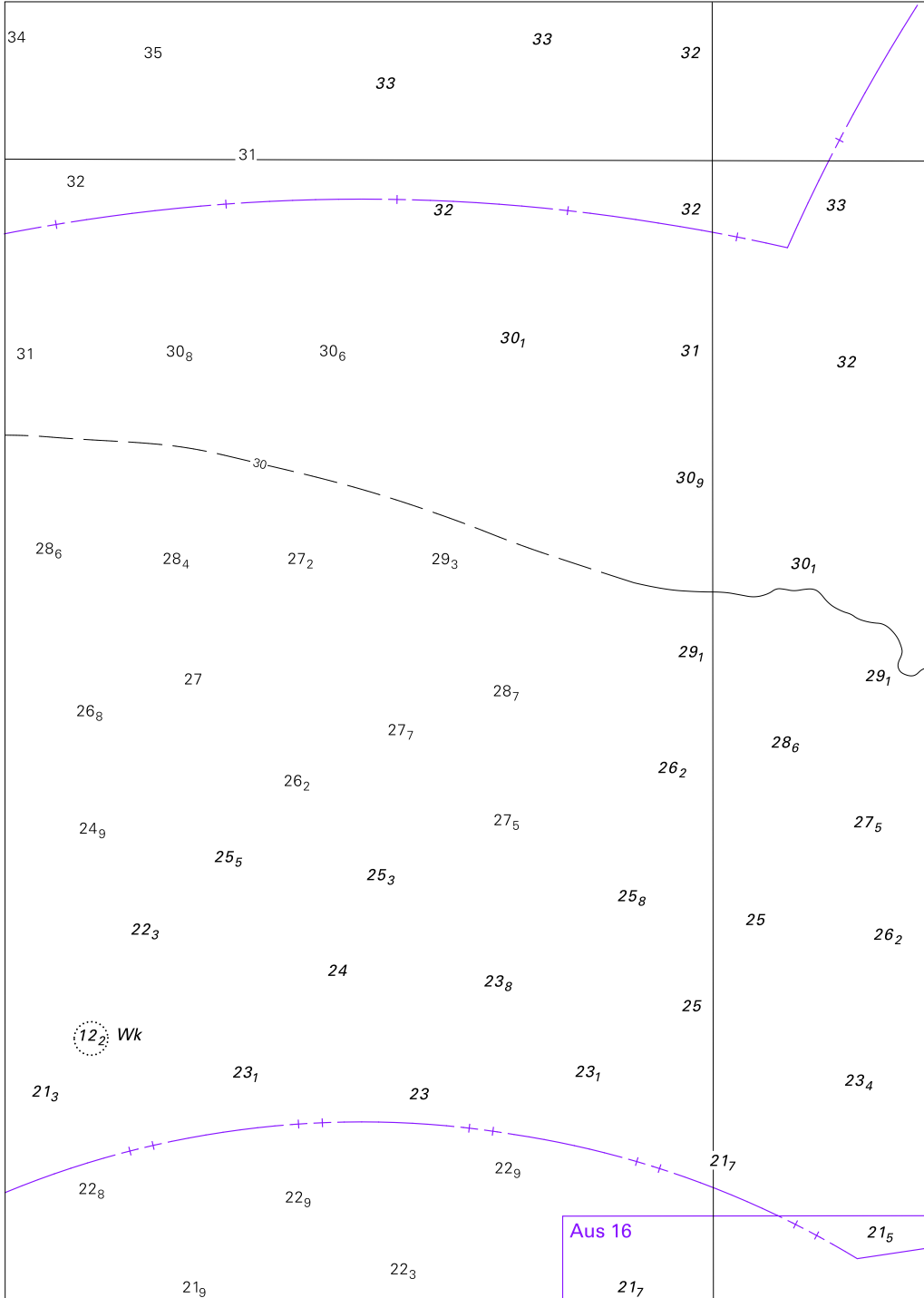


Block for chart Aus 296

© Commonwealth of Australia 2009

(122.3 x 159mm)

To accompany Australian Notice to Mariners 483/2009

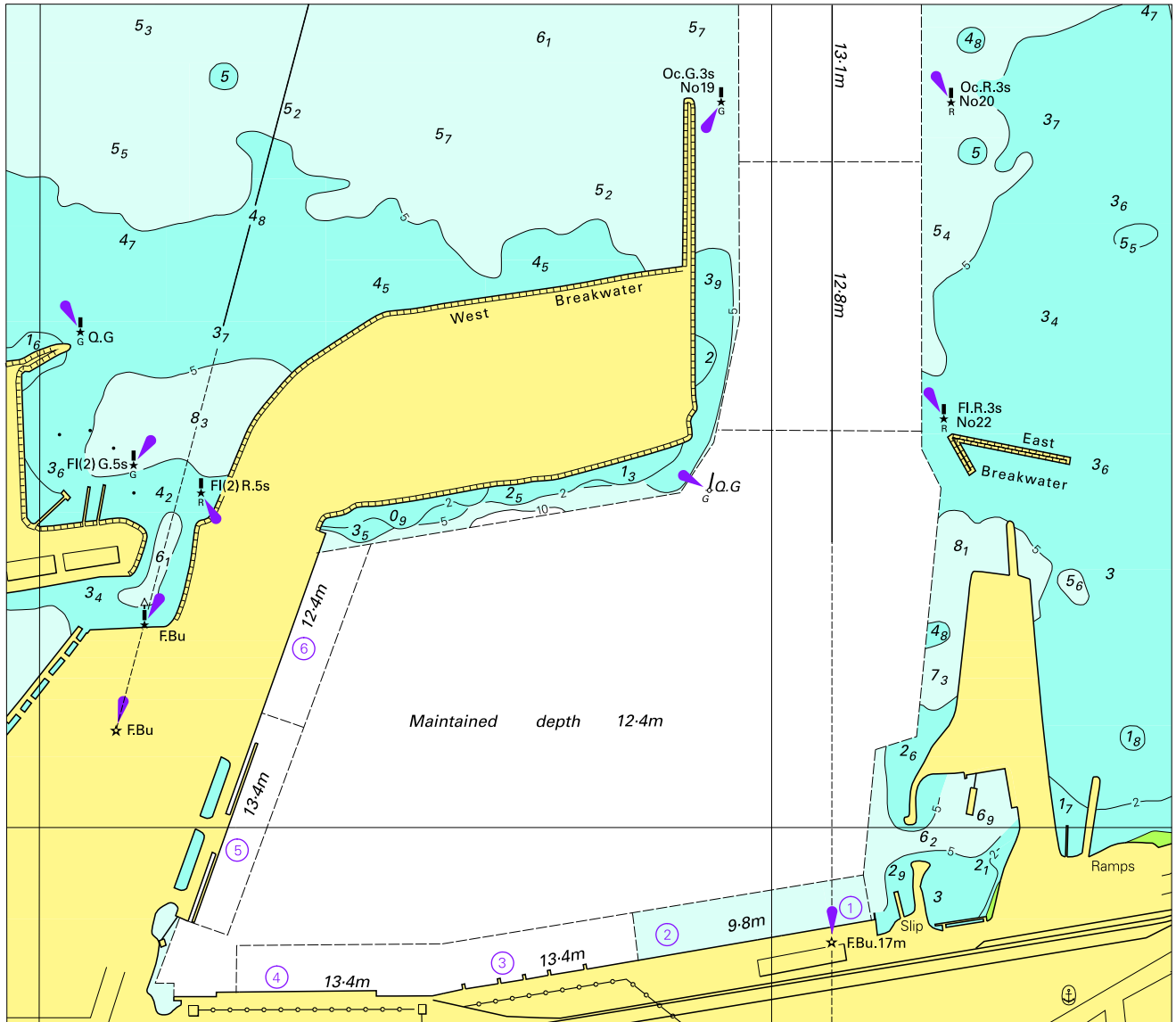


Block for chart Aus 717

© Commonwealth of Australia 2009

(189.6 x 134.9mm)

To accompany Australian Notice to Mariners 487/2009

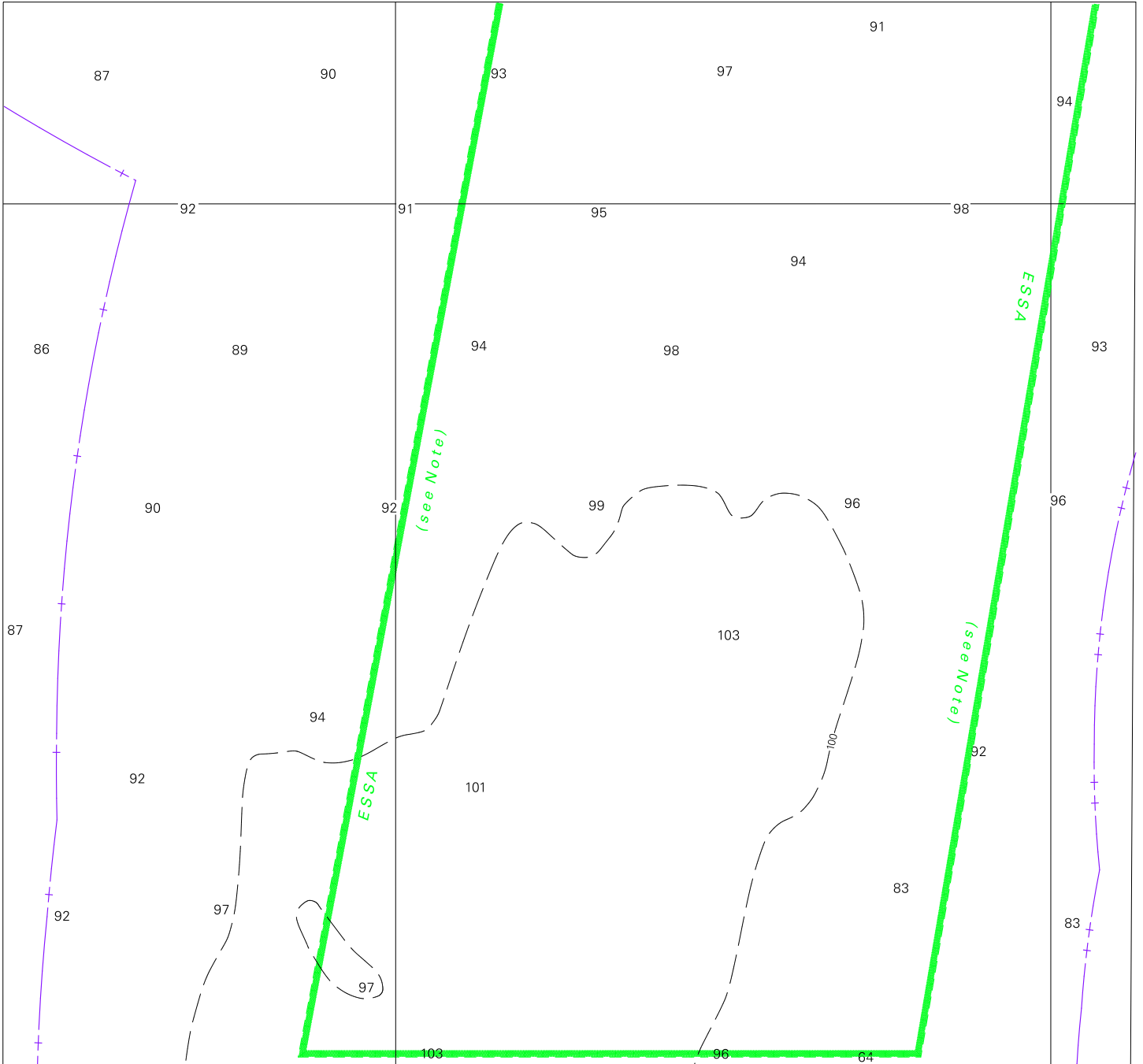


Block for chart Aus 81

© Commonwealth of Australia 2009

(151.1x172.8mm)

To accompany Australian Notice to Mariners 491/2009



Block for chart Aus 791

© Commonwealth of Australia 2009

(178.4 x 190.2mm)