

To accompany Australian Notice to Mariners 414/2009

AUSTRALIAN MARITIME JURISDICTION
(AMJ)

The territorial sea baseline and the outer limit of Australian maritime zones shown on this chart are sourced from the Geoscience Australia product Australian Maritime Boundaries (AMB). For Australian maritime boundary information see Australia Seafarers Handbook AHP 20.

Note for chart Aus 722

To accompany Australian Notice to Mariners 414/2009

AUSTRALIAN MARITIME JURISDICTION
(AMJ)

The territorial sea baseline and the outer limit of Australian maritime zones shown on this chart are sourced from the Geoscience Australia product Australian Maritime Boundaries (AMB). For Australian maritime boundary information see Australia Seafarers Handbook AHP 20.

Note for chart Aus 724

To accompany Australian Notice to Mariners 414/2009

AUSTRALIAN MARITIME JURISDICTION
(AMJ)

The territorial sea baseline and the outer limit of Australian maritime zones shown on this chart are sourced from the Geoscience Australia product Australian Maritime Boundaries (AMB). For Australian maritime boundary information see Australia Seafarers Handbook AHP 20.

Note for chart AX 72722

To accompany Australian Notice to Mariners 419/2009

AUSTRALIAN MARITIME JURISDICTION
(AMJ)

The territorial sea baseline and the outer limit of Australian maritime zones shown on this chart are sourced from the Geoscience Australia product Australian Maritime Boundaries (AMB). For Australian maritime boundary information see Australia Seafarers Handbook AHP 20.

Note for chart Aus 732

To accompany Australian Notice to Mariners 419/2009

AUSTRALIAN MARITIME JURISDICTION
(AMJ)

The territorial sea baseline and the outer limit of Australian maritime zones shown on this chart are sourced from the Geoscience Australia product Australian Maritime Boundaries (AMB). For Australian maritime boundary information see Australia Seafarers Handbook AHP 20.

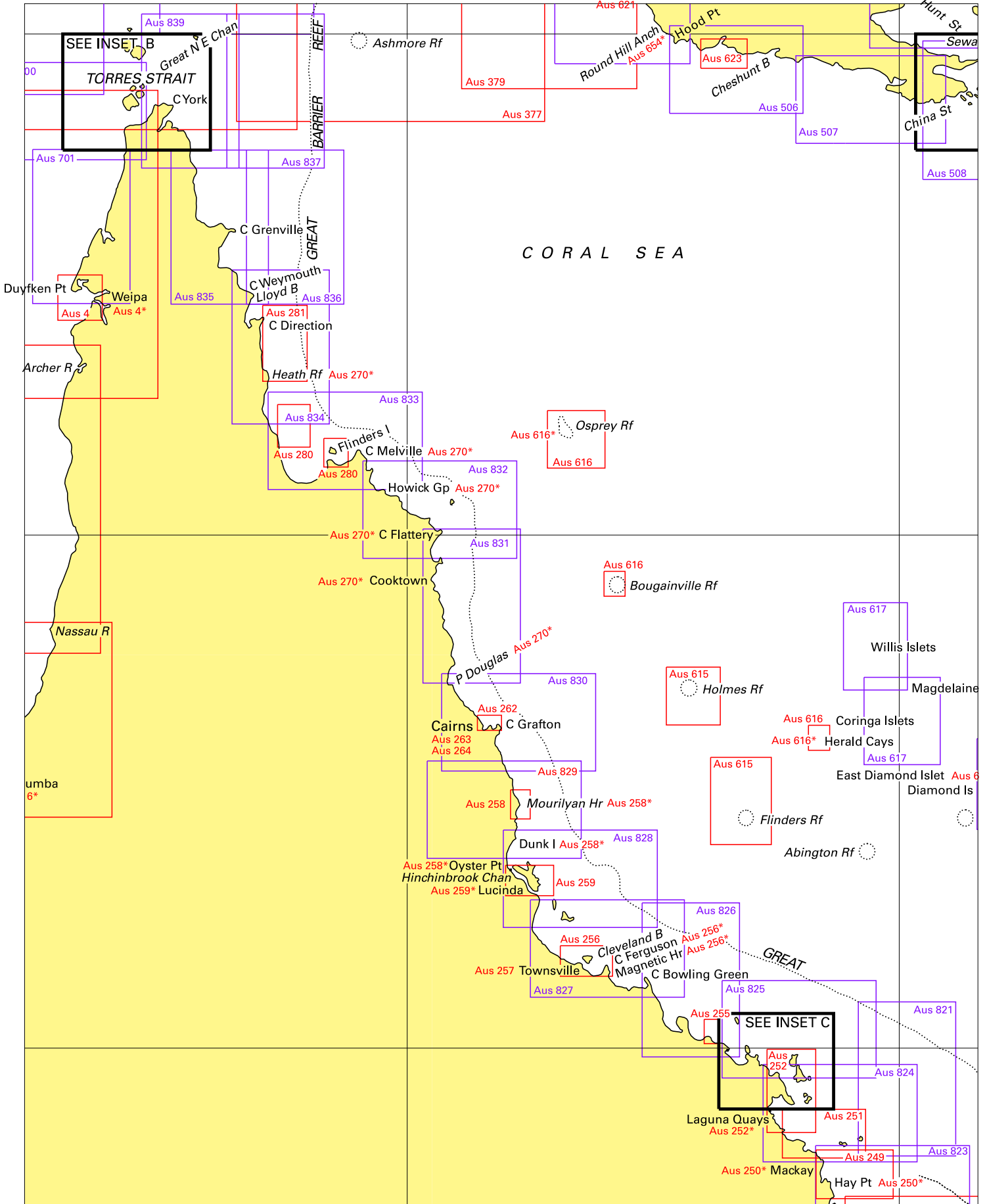
Note for chart Aus 733

To accompany Australian Notice to Mariners 424/2009

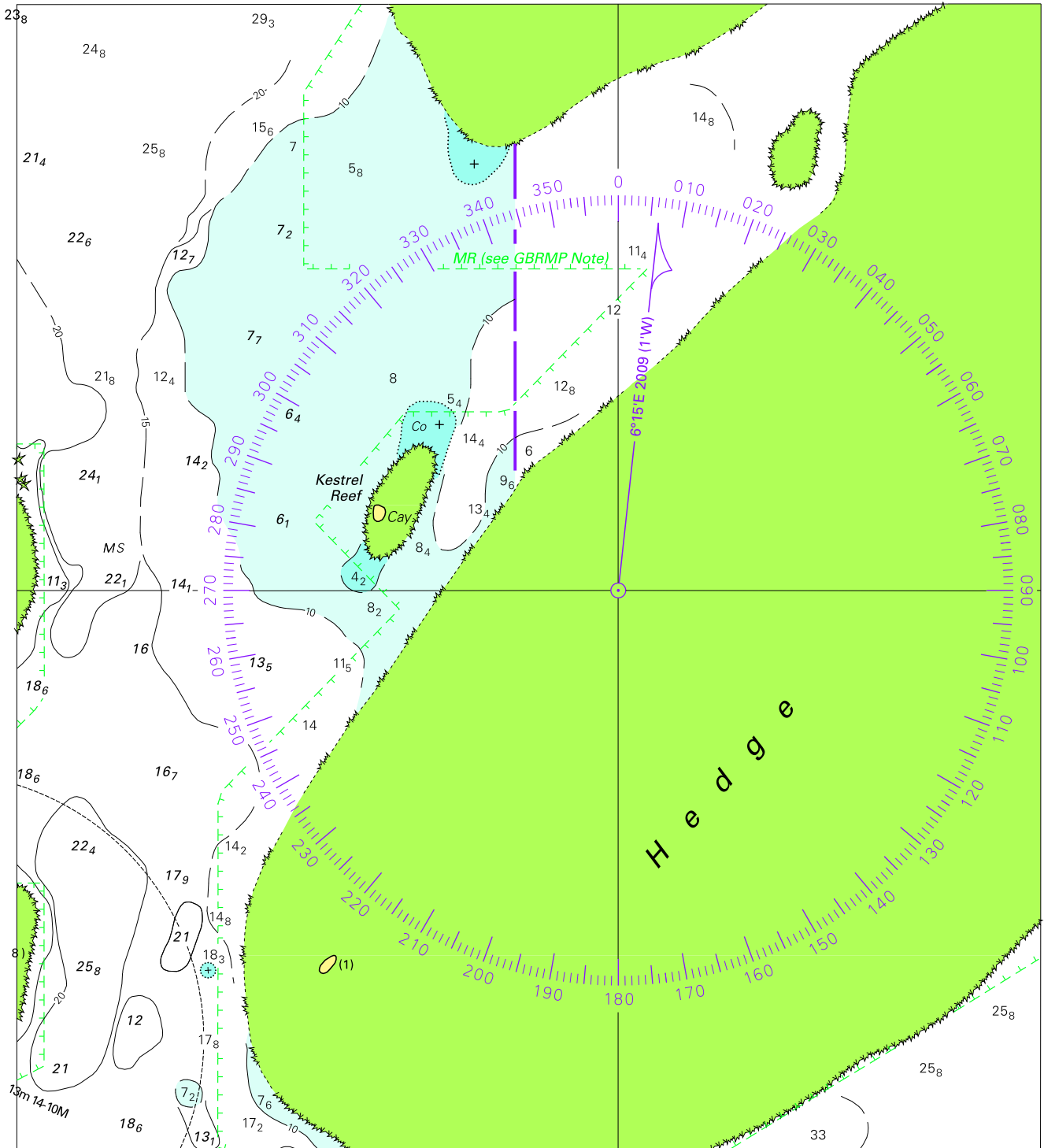
ENVIRONMENTALLY SENSITIVE SEA
AREA (ESSA)

Areas of this chart are Environmentally Sensitive Sea Areas (ESSA). Areas within this marine protected area have restrictions on access and activities. See Australian Seafarers Handbook AHP 20.

Note for chart Aus 767



To accompany Australian Notice to Mariners 408/2009

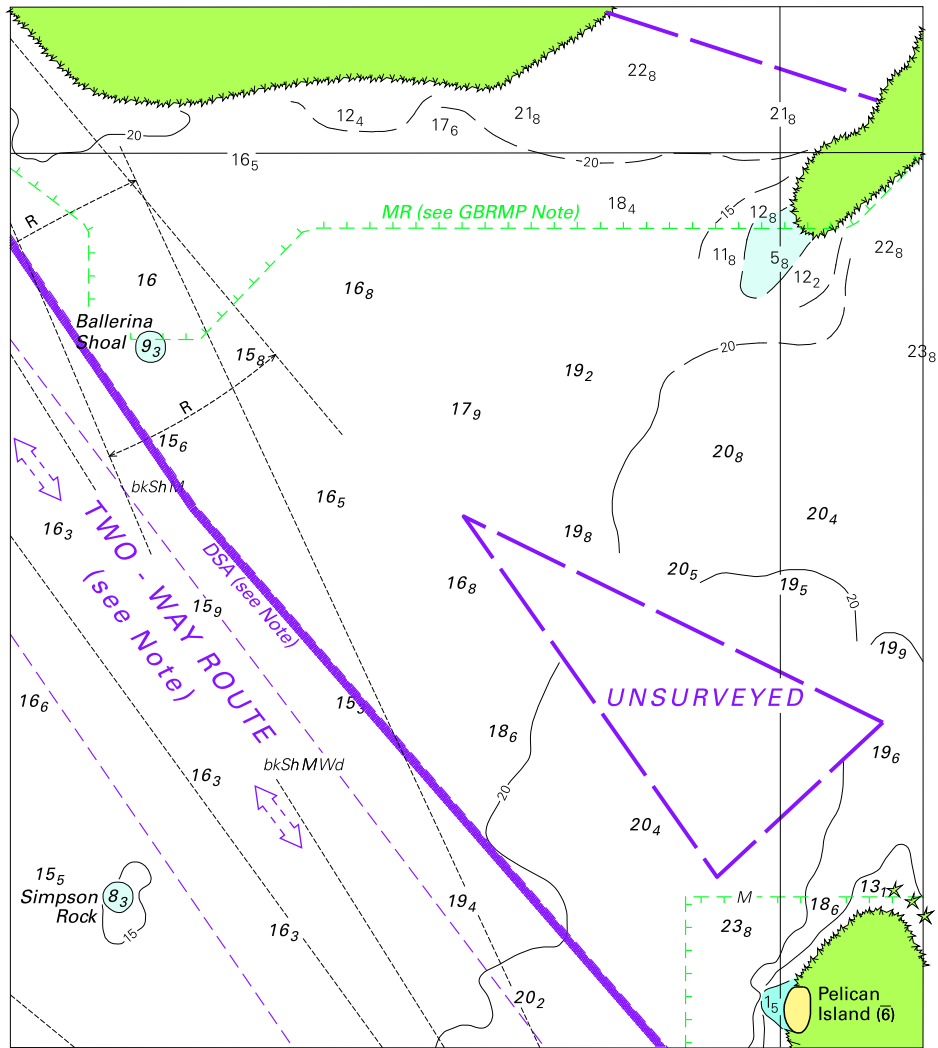


Block A for chart Aus 280

© Commonwealth of Australia 2009

(172 x 192.3mm)

To accompany Australian Notice to Mariners 408/2009

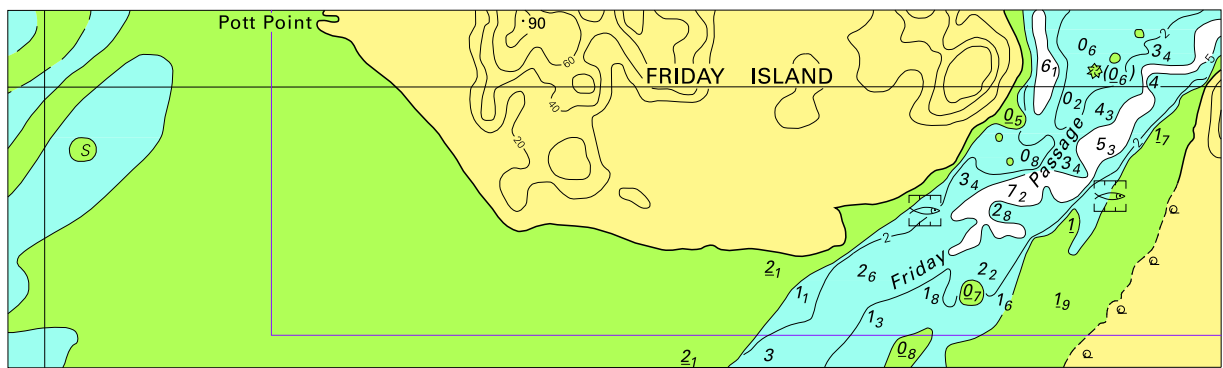


Block B for chart Aus 280

© Commonwealth of Australia 2009

(120.7 x 137.7mm)

To accompany Australian Notice to Mariners 411/2009

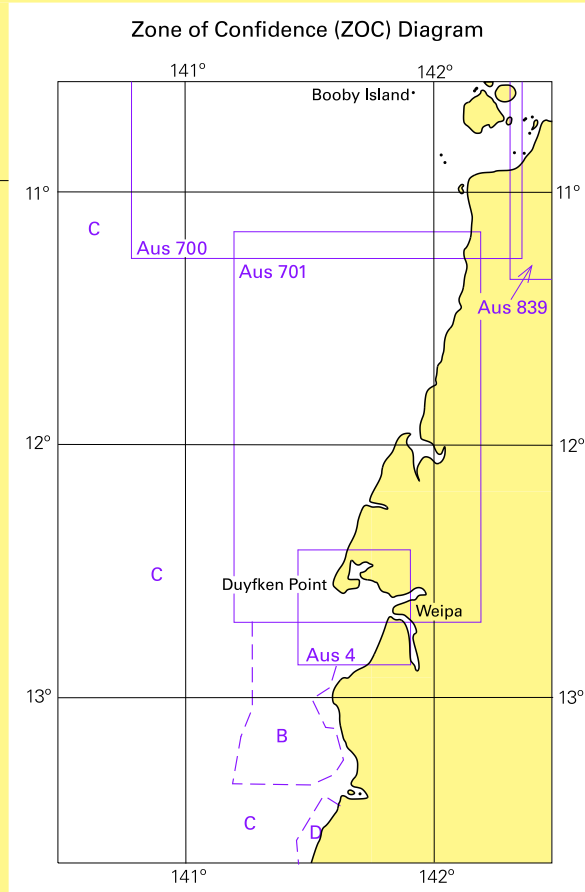


Block for chart Aus 293

© Commonwealth of Australia 2009

(160.5 x 47.3mm)

To accompany Australian Notice to Mariners 412/2009



ZOC CATEGORIES

(For details see Australian Seafarers Handbook, AHP 20)

ZOC	POSITION ACCURACY	DEPTH ACCURACY	SEAFLOOR COVERAGE
A1	±5m	=0.50m + 1% d	All significant seafloor features detected
A2	±20m	=1.00m + 2% d	All significant seafloor features detected
B	±50m	=1.00m + 2% d	Uncharted features hazardous to surface navigation are not expected but may exist
C	±500m	=2.00m + 5% d	Depth anomalies may be expected
D	Worse than ZOC C	Worse than ZOC C	Large depth anomalies may be expected
U	Unassessed -The quality of the bathymetric data has yet to be assessed		