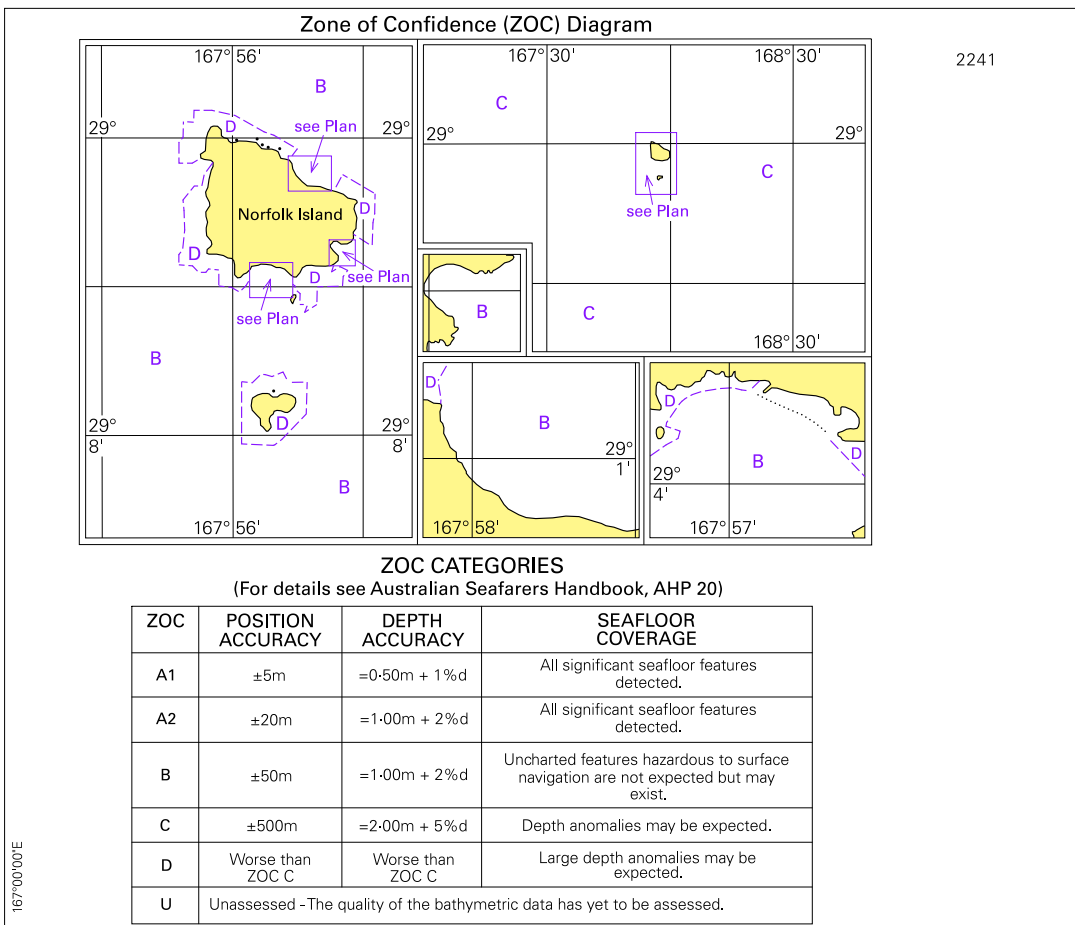
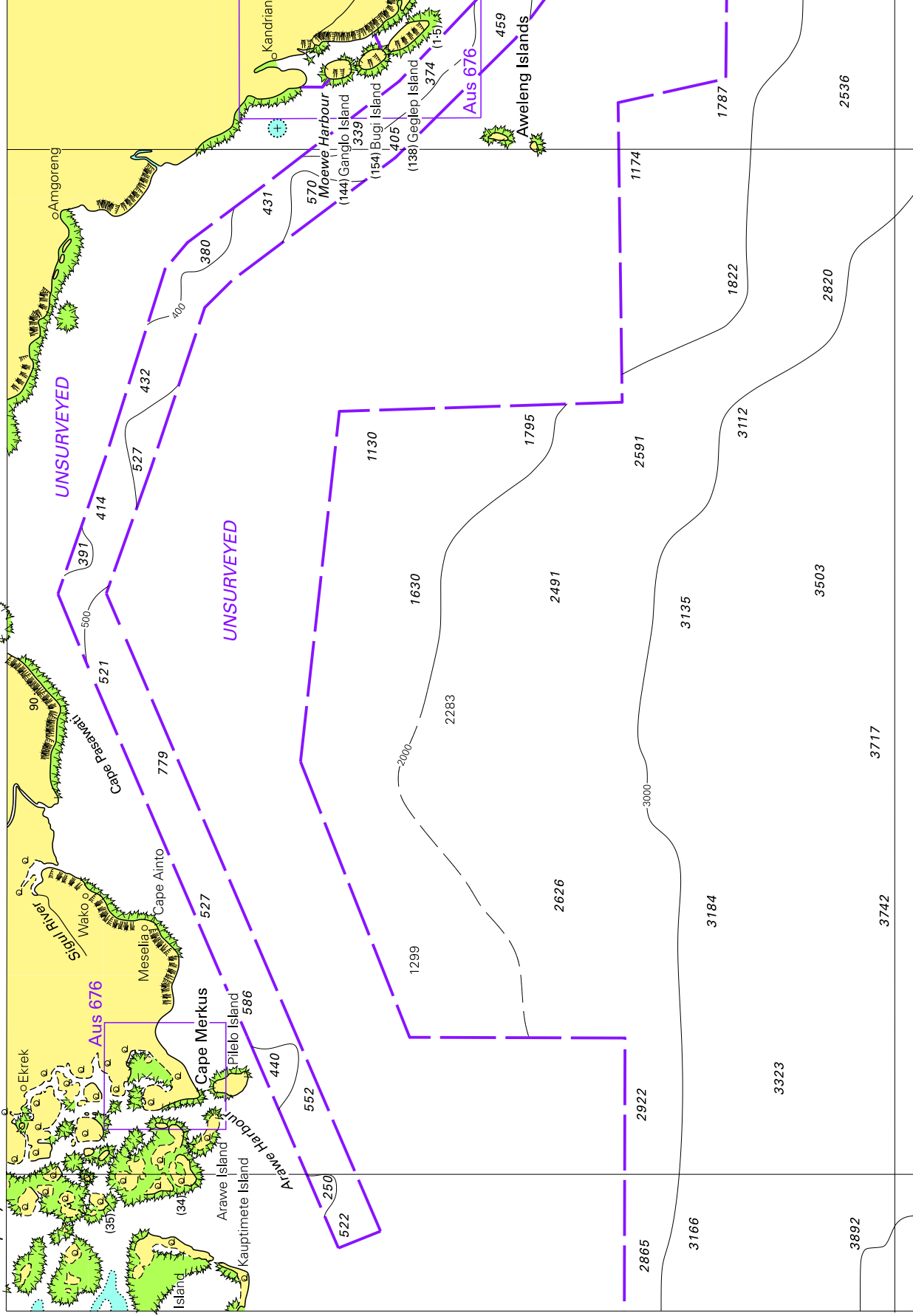


To accompany Australian Notice to Mariners 356/2009



To accompany Australian Notice to Mariners 361/2009

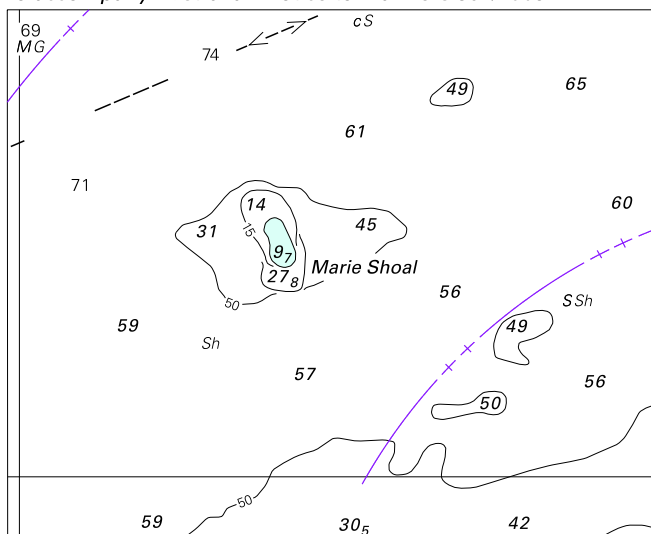


Block for chart Aus 386

© Commonwealth of Australia 2009

(235.0 x 162.8mm)

To accompany Australian Notice to Mariners 364/2009

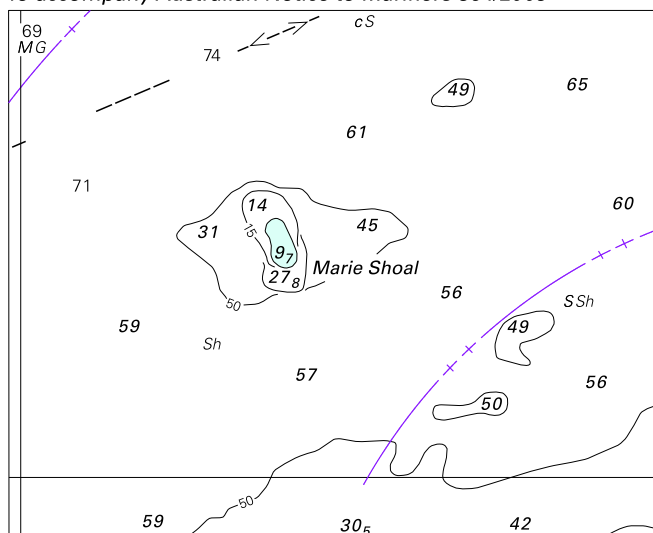


© Commonwealth of Australia 2009

Block for chart Aus 309

(86.4 x 69.6mm)

To accompany Australian Notice to Mariners 364/2009

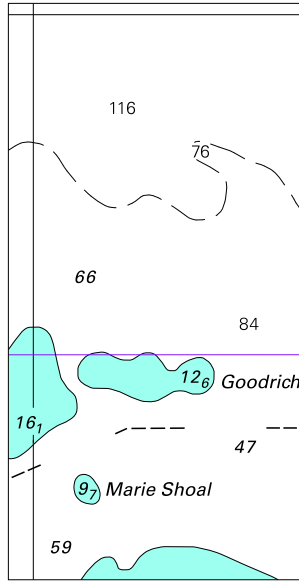


© Commonwealth of Australia 2009

Block for chart Aus 310

(86.4 x 69.6mm)

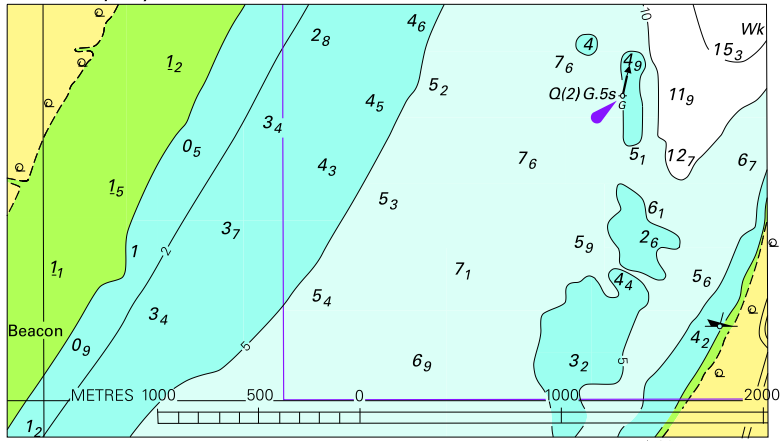
To accompany Australian Notice to Mariners 364/2009



© Commonwealth of Australia 2009
Block for chart Aus 4721

(38.7 x 76.2mm)

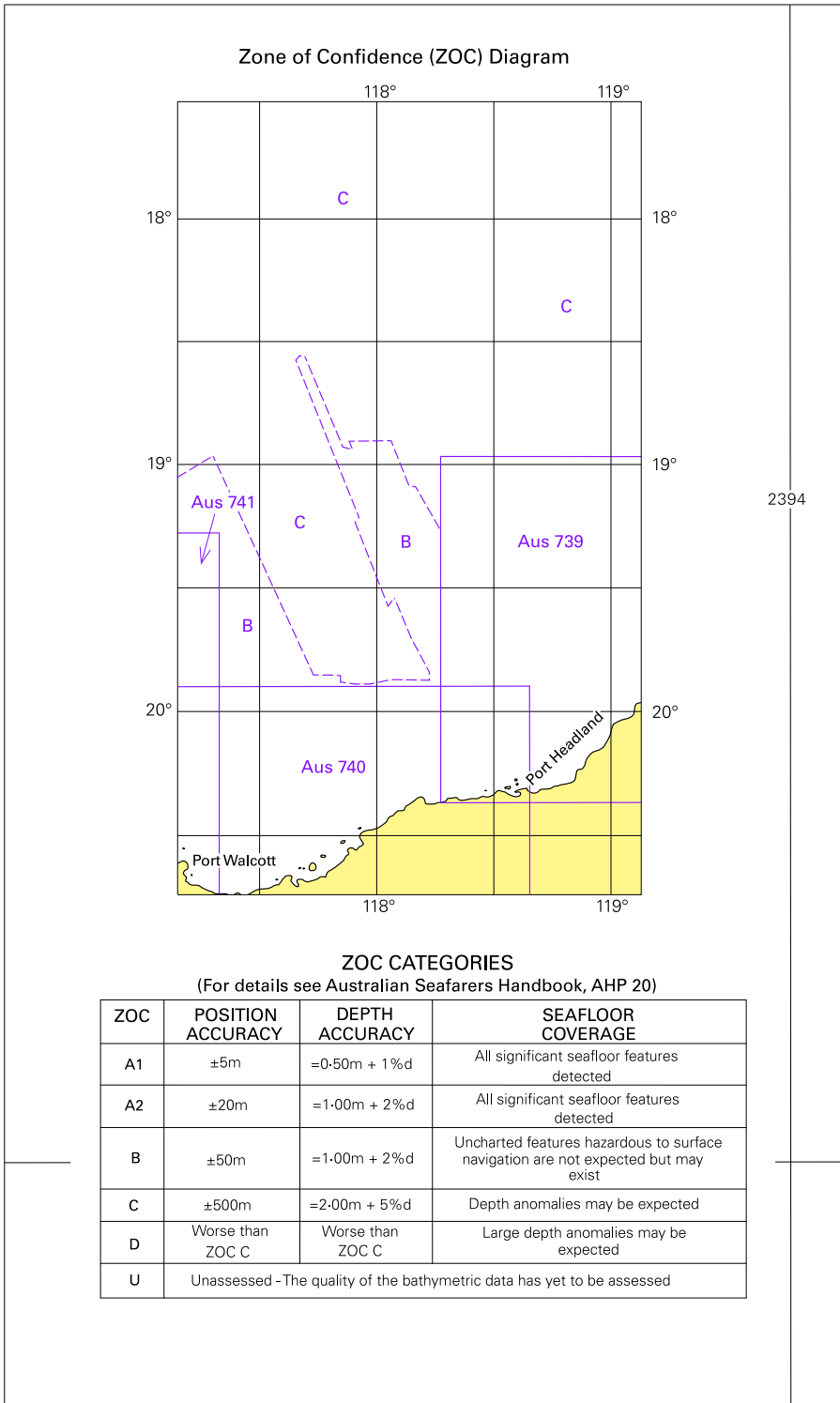
To accompany Australian Notice to Mariners 366/2009



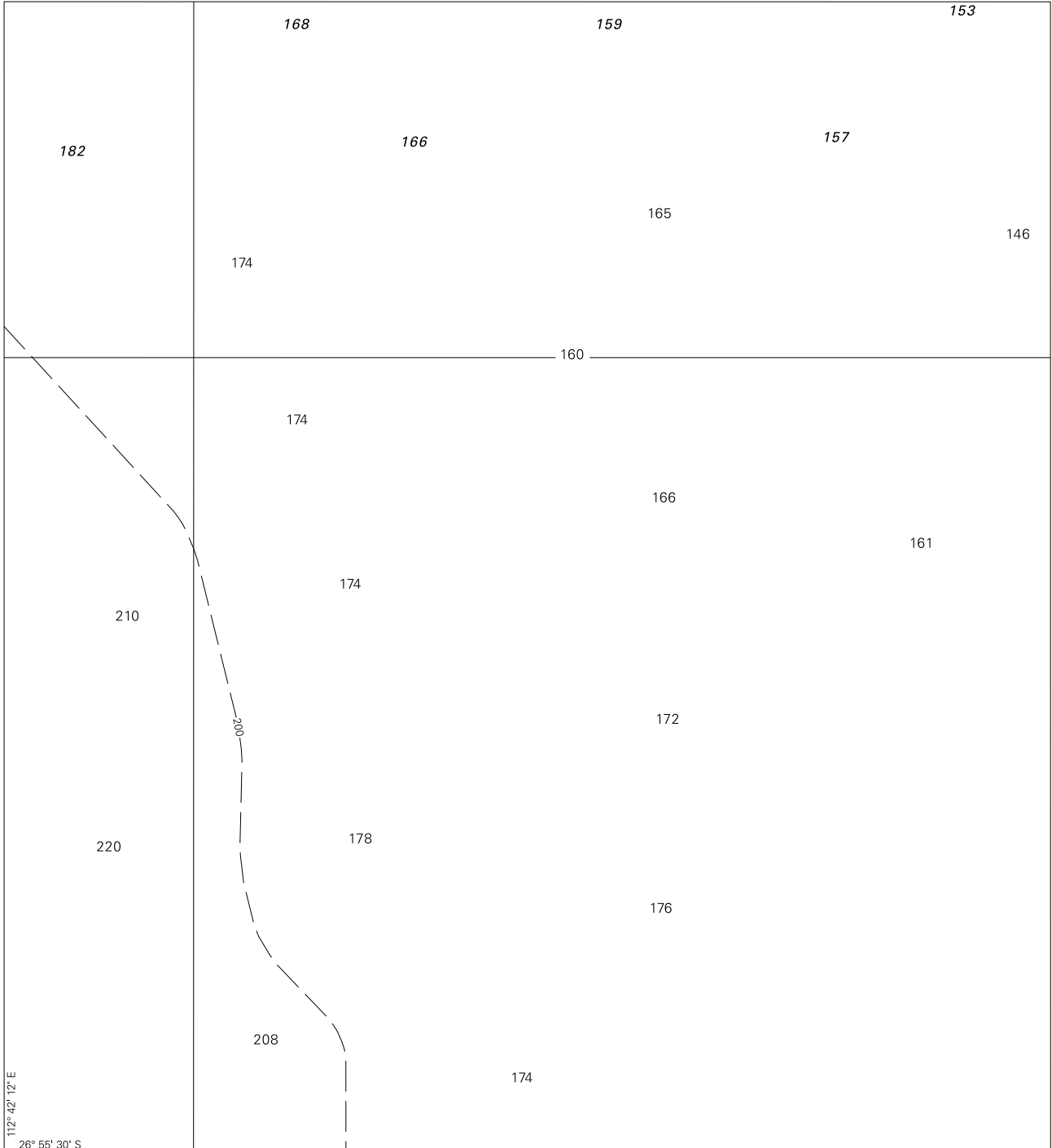
Block for chart Aus 32 © Commonwealth of Australia 2009

(100.6 x 57.2mm)

To accompany Australian Notice to Mariners 367/2009



To accompany Australian Notice to Mariners 369/2009

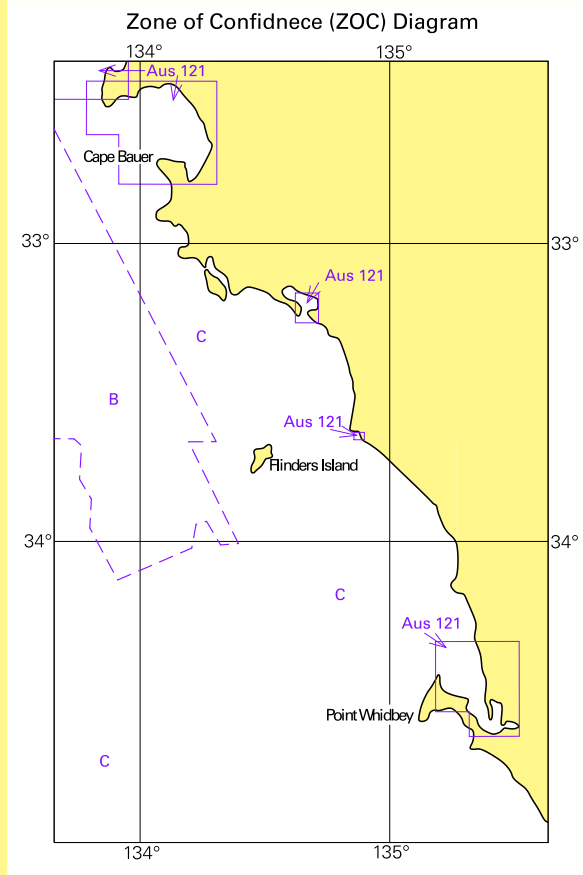


Block for chart Aus 749

© Commonwealth of Australia 2009

(170 x 186.7mm)

To accompany Australian Notice to Mariners 372/2009



ZOC CATEGORIES

(For details see Australian Seafarers Handbook, AHP 20)

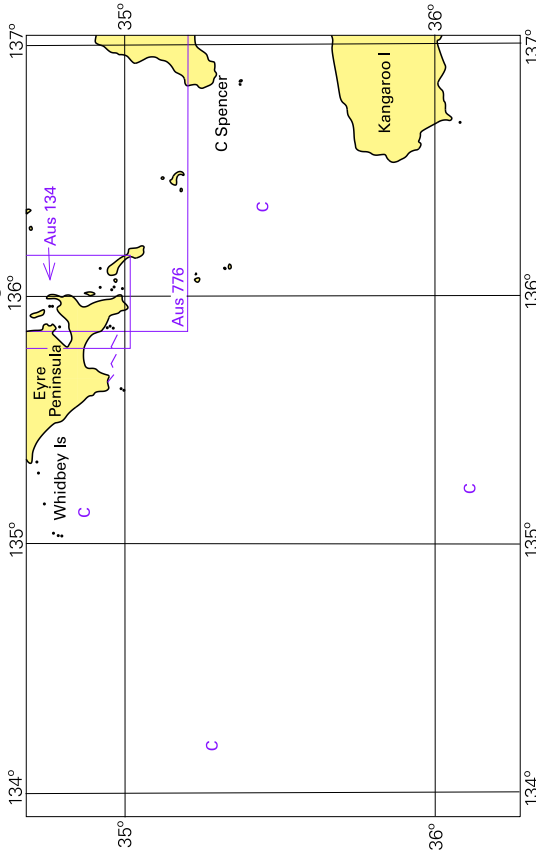
ZOC	POSITION ACCURACY	DEPTH ACCURACY	SEAFLOOR COVERAGE
A1	±5m	=0.50m + 1% d	All significant seafloor features detected
A2	±20m	=1.00m + 2% d	All significant seafloor features detected
B	±50m	=1.00m + 2% d	Uncharted features hazardous to surface navigation are not expected but may exist
C	±500m	=2.00m + 5% d	Depth anomalies may be expected
D	Worse than ZOC C	Worse than ZOC C	Large depth anomalies may be expected
U	Unassessed - The quality of the bathymetric data has yet to be assessed		



To accompany Australian Notice to Mariners 373/2009

if surface floats associated may be encountered.

Zone of Confidence (ZOC) Diagram



ZOC CATEGORIES

(For details see Australian Seafarers Handbook, AHP 20)

ZOC	POSITION ACCURACY	DEPTH ACCURACY	SEAFLOOR COVERAGE
A1	±5m	=0.50m + 1% <i>d</i>	All significant seafloor features detected
A2	±20m	=1.00m + 2% <i>d</i>	All significant seafloor features detected
B	±50m	=1.00m + 2% <i>d</i>	Uncharted features hazardous to surface navigation are not expected but may exist
C	±500m	=2.00m + 5% <i>d</i>	Depth anomalies may be expected
D	Worse than ZOC C	Worse than ZOC C	Large depth anomalies may be expected
U	Unassessed	The quality of the bathymetric data has yet to be assessed	

Block for chart Aus 343

© Commonwealth of Australia 2009

(240.1 x 99.2m)