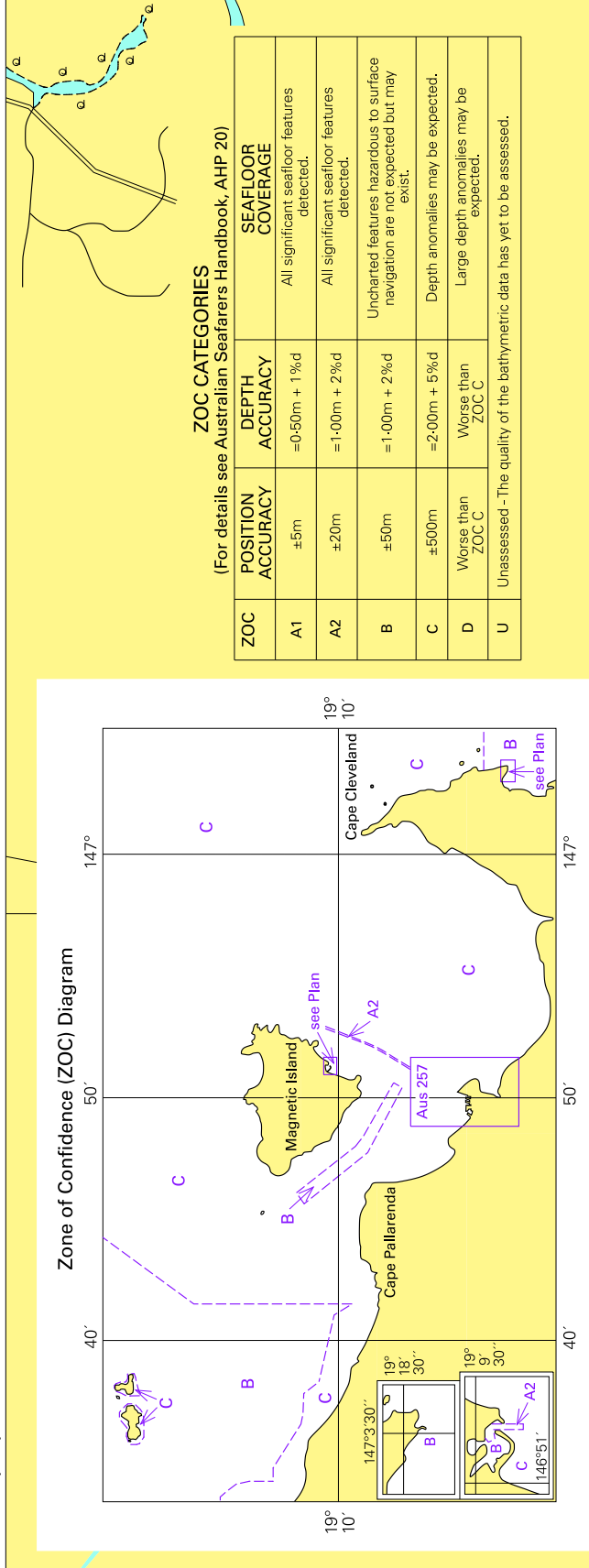


To accompany Australian Notice to Mariners 292/2009

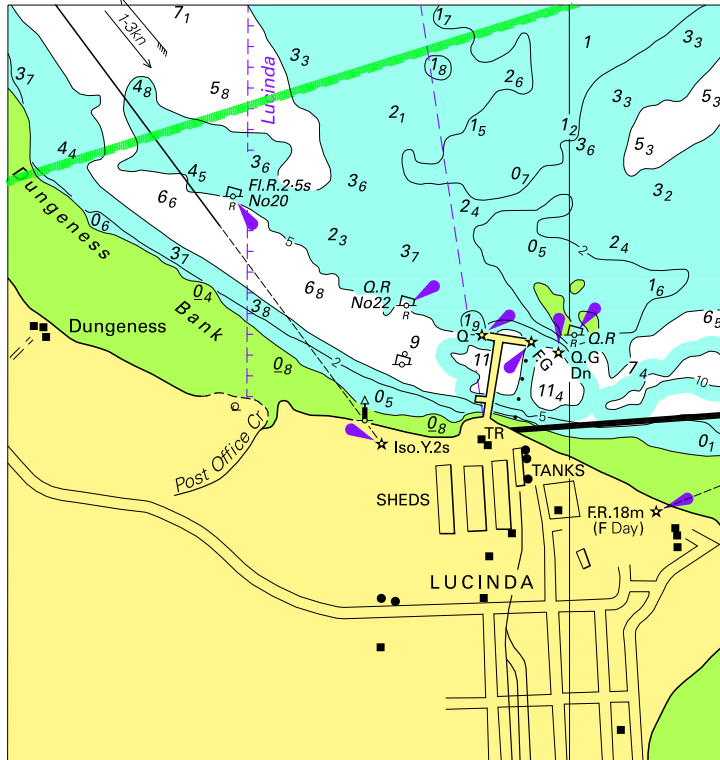


Block for chart Aus 256

© Commonwealth of Australia 2009

(226.6 x 85.1mm)

To accompany Australian Notice to Mariners 293/2009

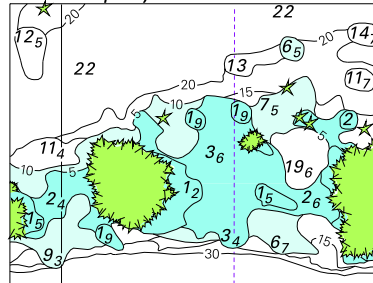


© Commonwealth of Australia 2009

Block for chart Aus 259

(94.5 x 100.0mm)

To accompany Australian Notice to Mariners 294/2009

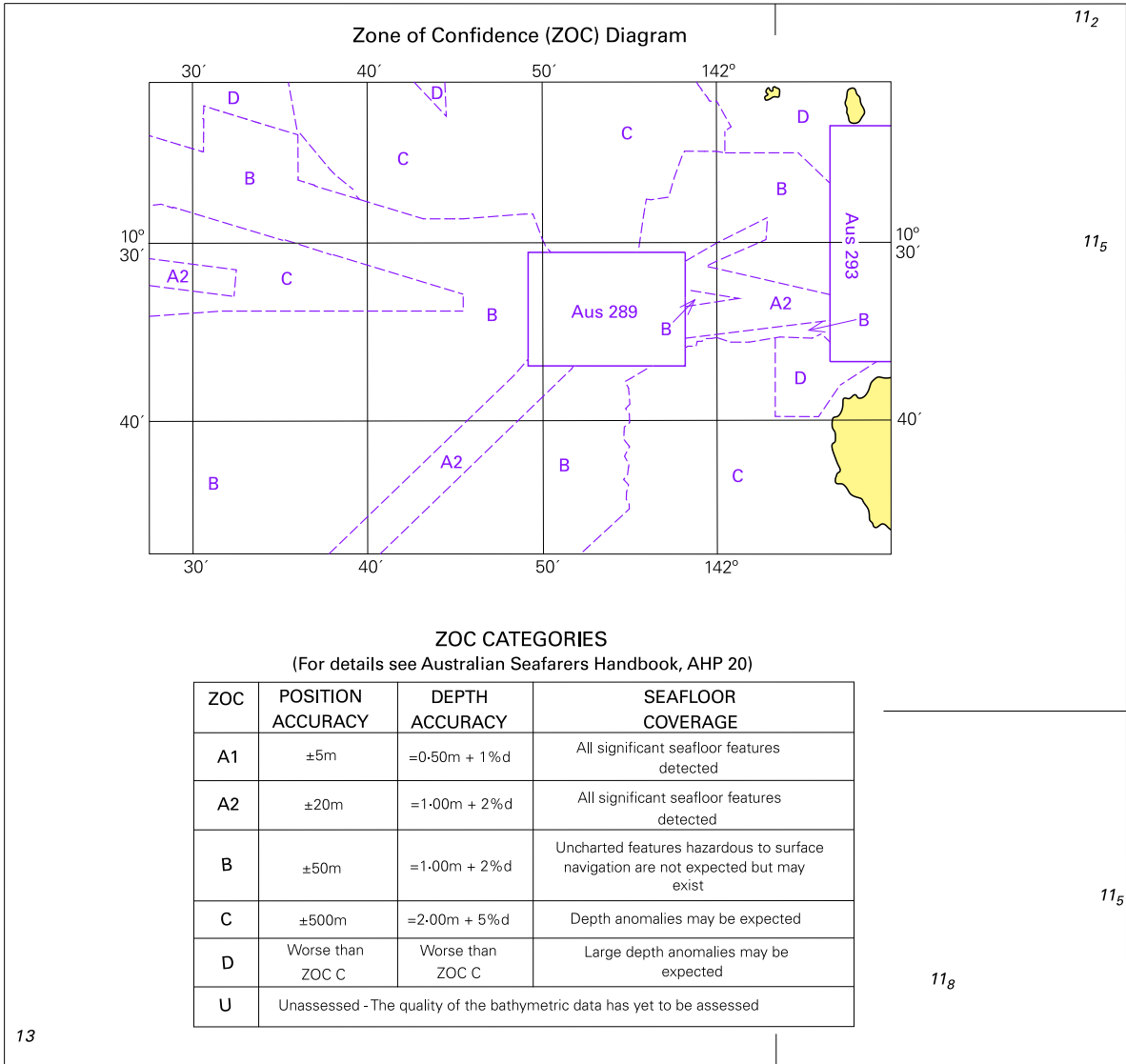


© Commonwealth of Australia 2009

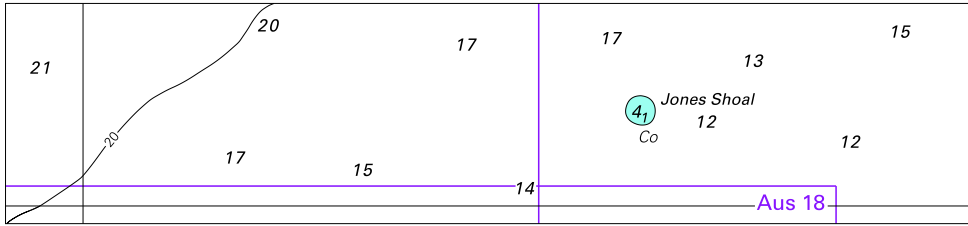
Block for chart Aus 831

(48.4 x 37.2mm)

To accompany Australian Notice to Mariners 298/2009



To accompany Australian Notice to Mariners 299/2009

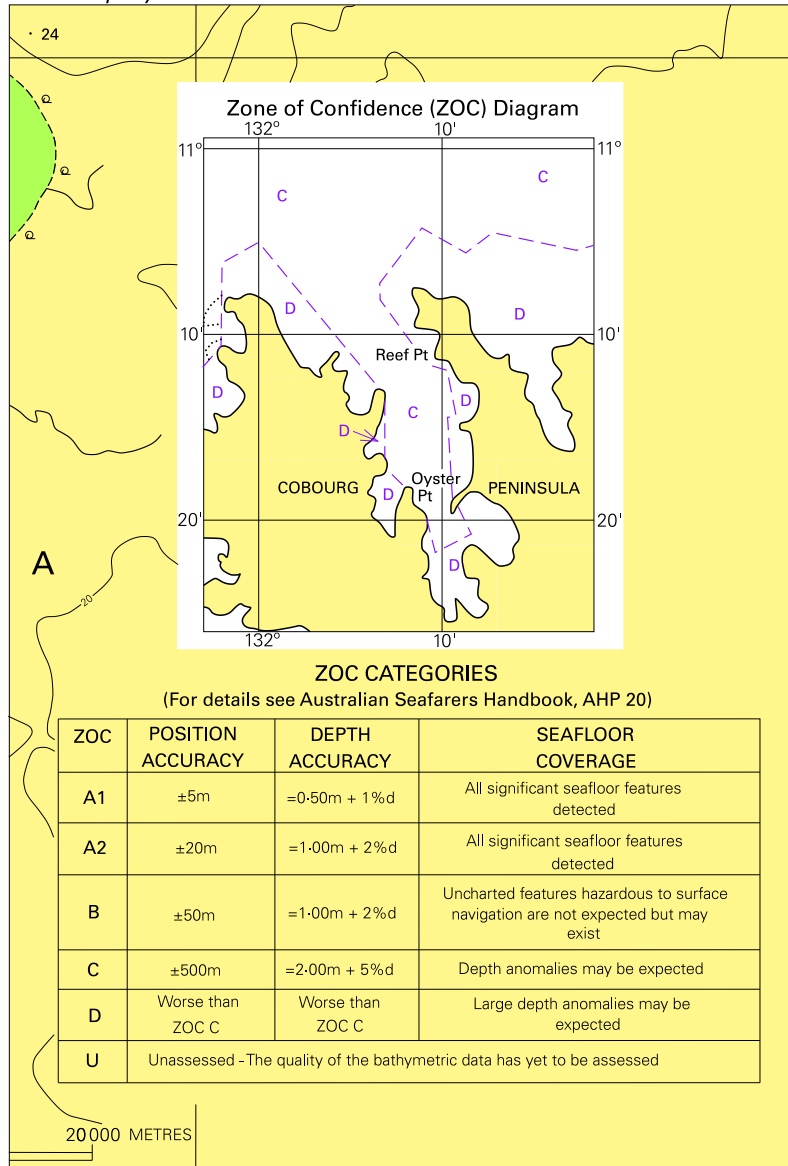


Block for chart Aus 308

© Commonwealth of Australia 2009

(128.5 x 29.1)

To accompany Australian Notice to Mariners 300/2009

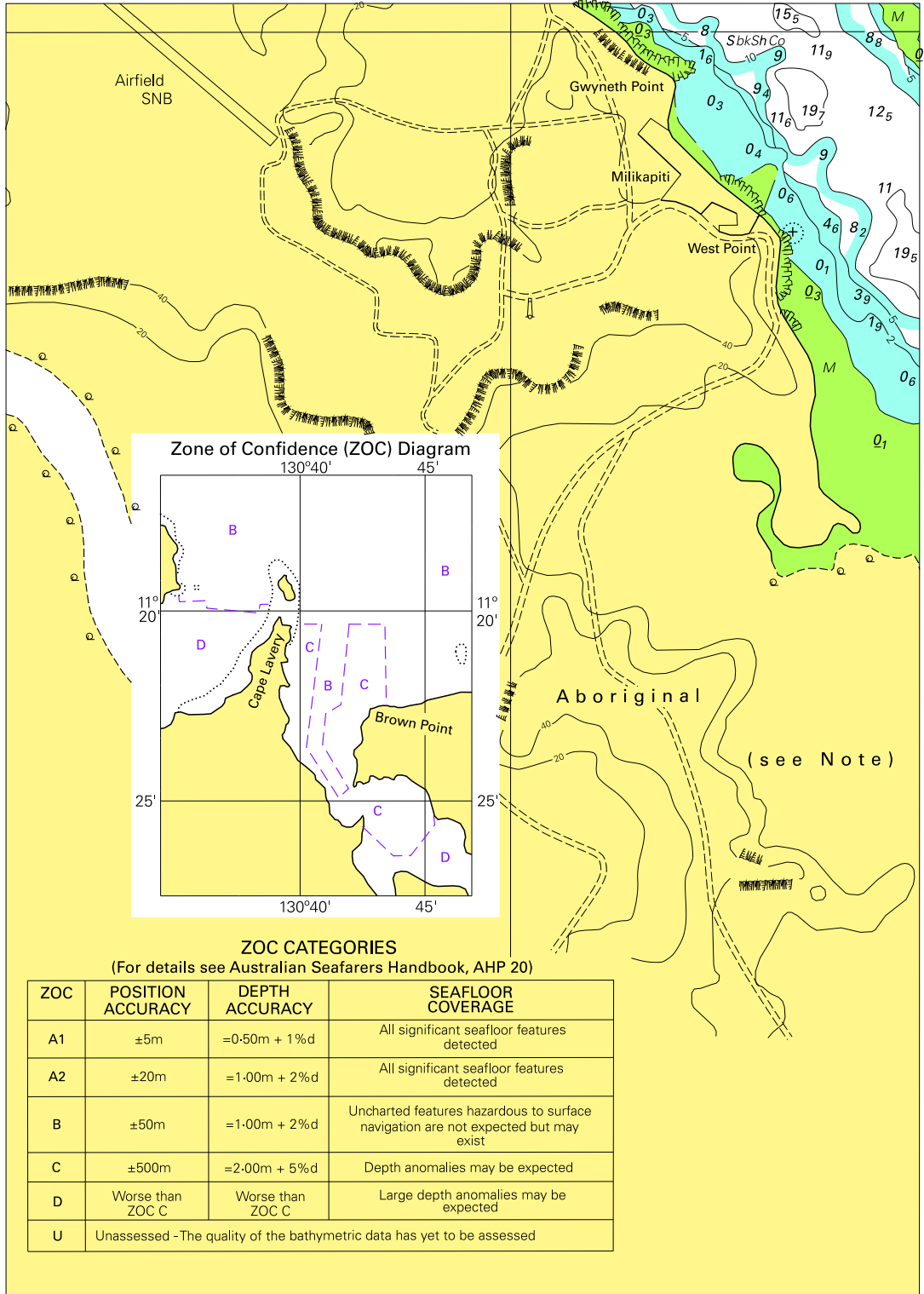


Block for chart Aus 18

© Commonwealth of Australia 2009

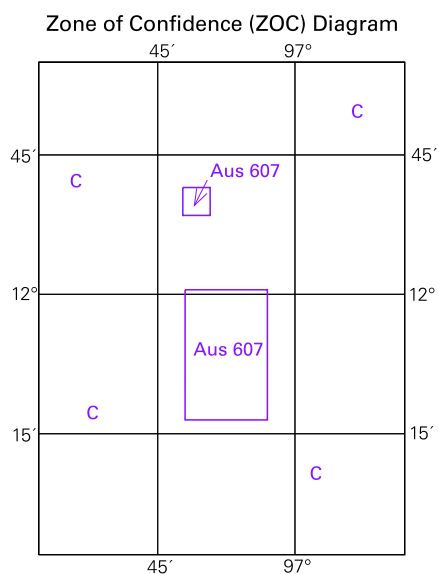
(104.4 x 154.6mm)

To accompany Australian Notice to Mariners 301/2009



To accompany Australian Notice to Mariners 305/2009

3999

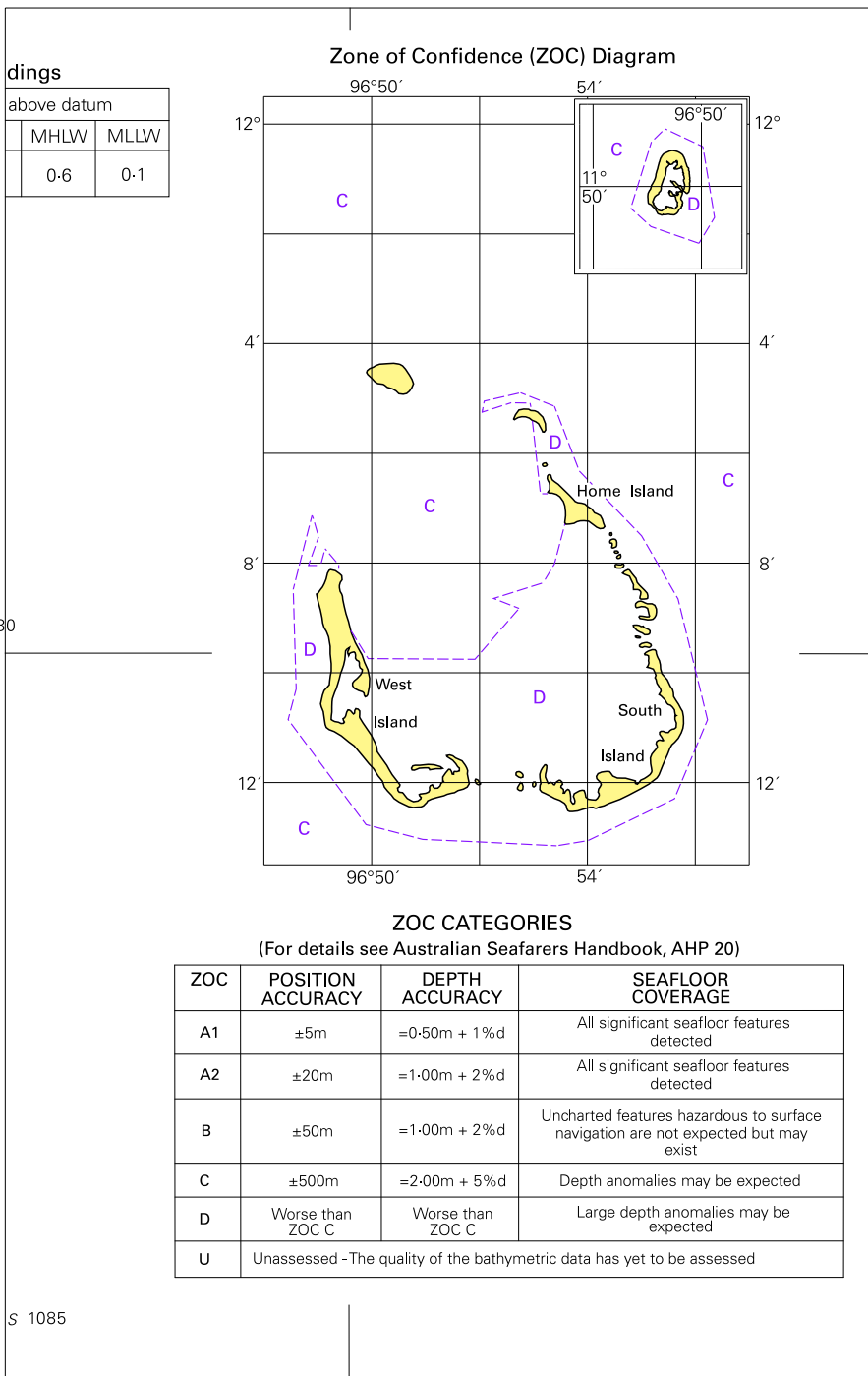


ZOC CATEGORIES

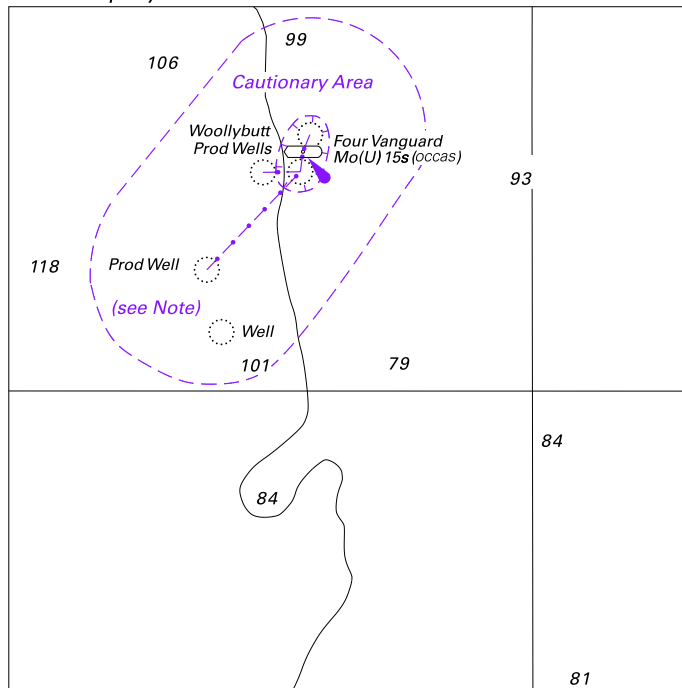
(For details see Australian Seafarers Handbook, AHP 20)

ZOC	POSITION ACCURACY	DEPTH ACCURACY	SEAFLOOR COVERAGE
A1	±5m	=0.50m + 1%d	All significant seafloor features detected
A2	±20m	=1.00m + 2%d	All significant seafloor features detected
B	±50m	=1.00m + 2%d	Uncharted features hazardous to surface navigation are not expected but may exist
C	±500m	=2.00m + 5%d	Depth anomalies may be expected
D	Worse than ZOC C	Worse than ZOC C	Large depth anomalies may be expected
U	Unassessed - The quality of the bathymetric data has yet to be assessed		

To accompany Australian Notice to Mariners 305/2009



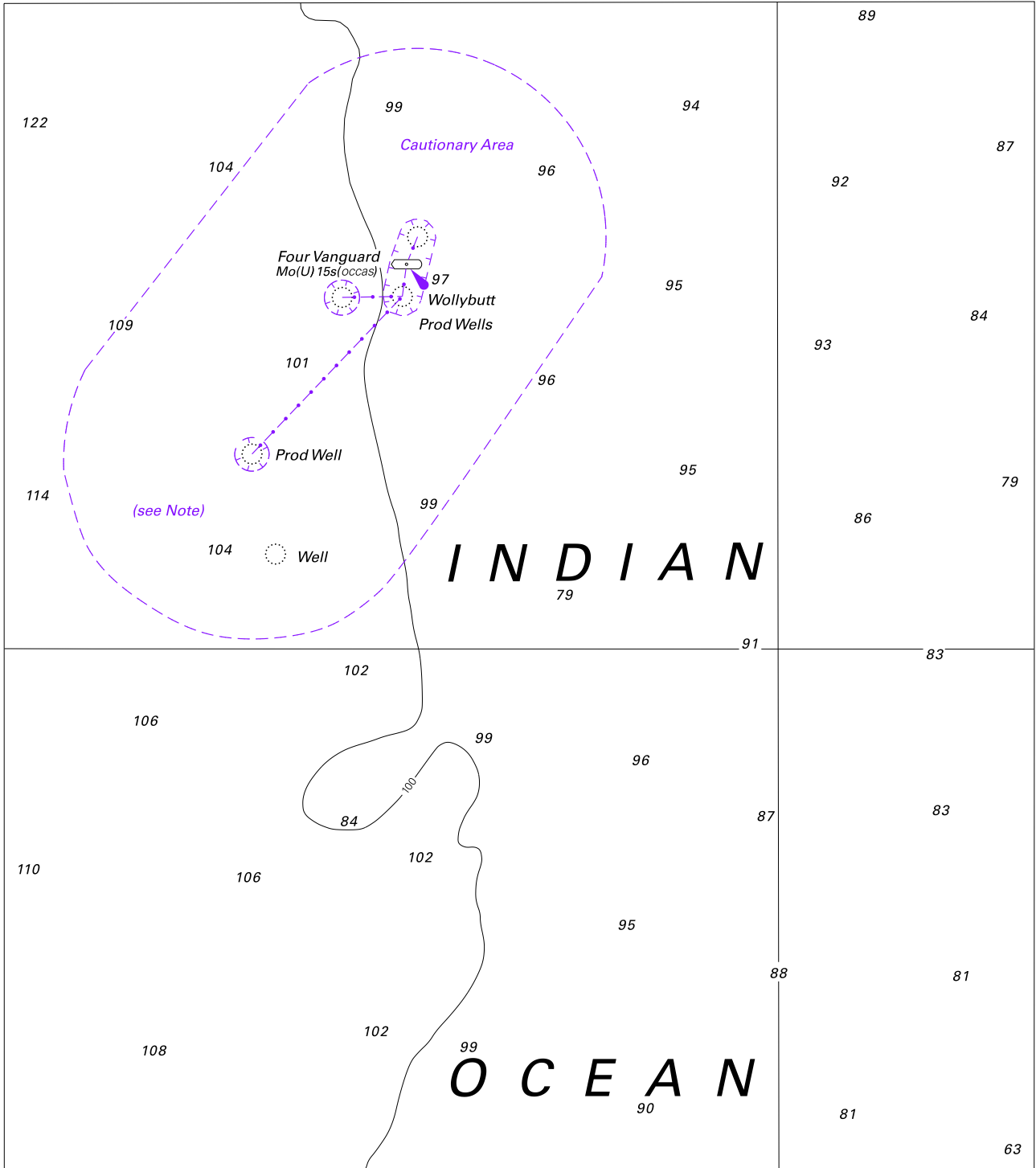
To accompany Australian Notice to Mariners 306/2009



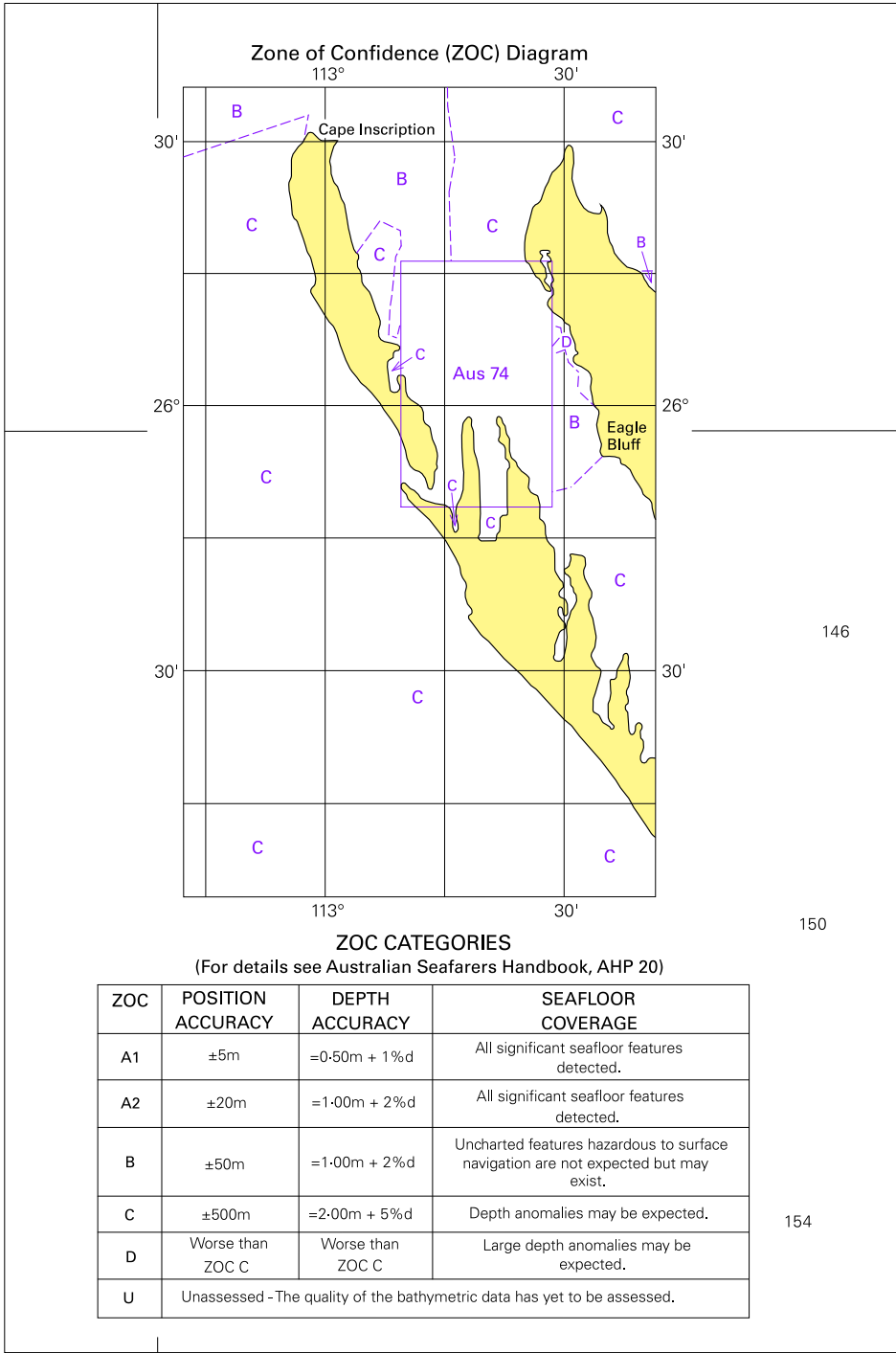
© Commonwealth of Australia 2009 (90.5 x 90.7mm)

Block for chart Aus 328

To accompany Australian Notice to Mariners 306/2009



To accompany Australian Notice to Mariners 307/2009



146

150

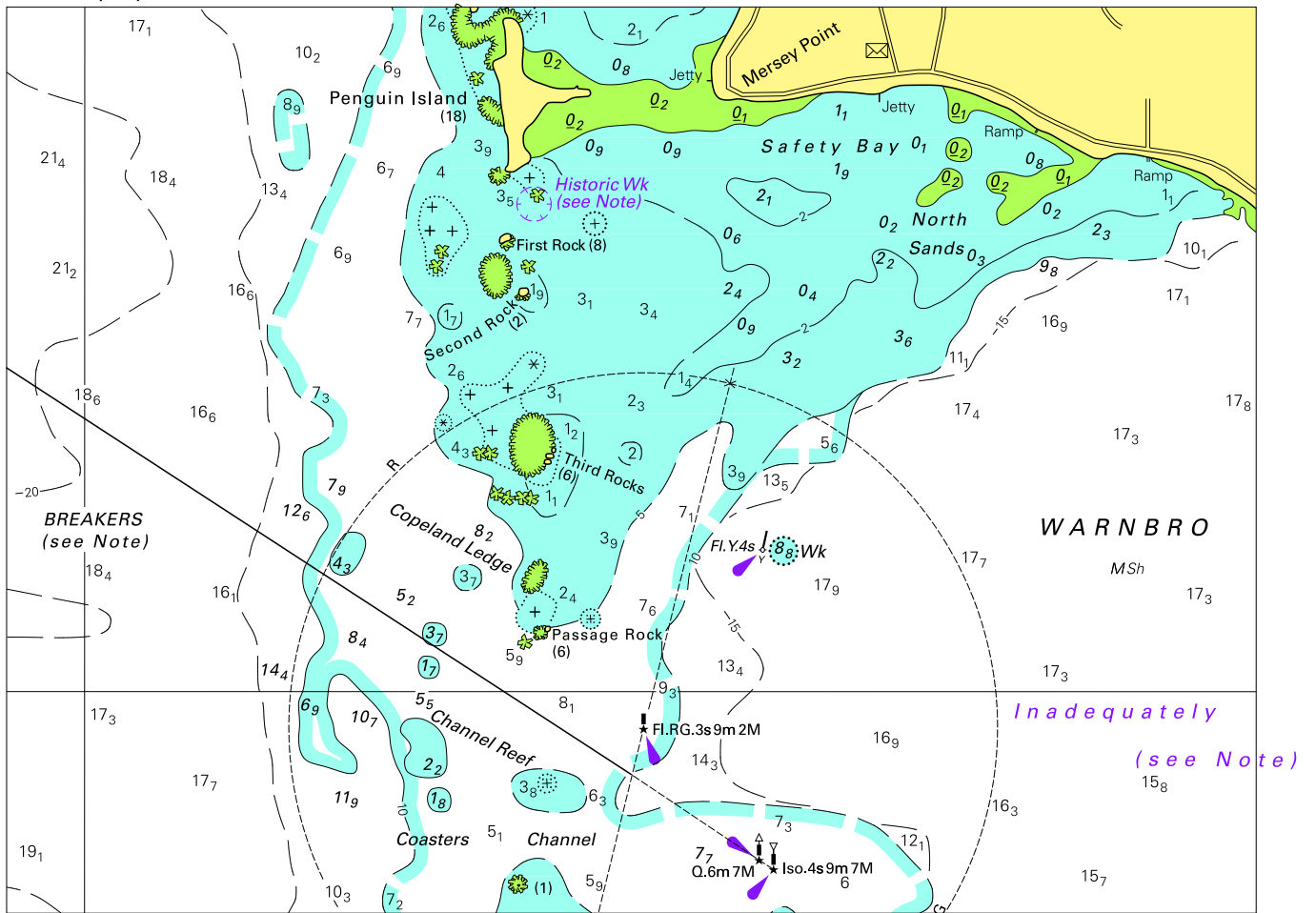
154

© Commonwealth of Australia 2009

Block for chart Aus 749

(123.3 x 186.4mm)

To accompany Australian Notice to Mariners 308/2009

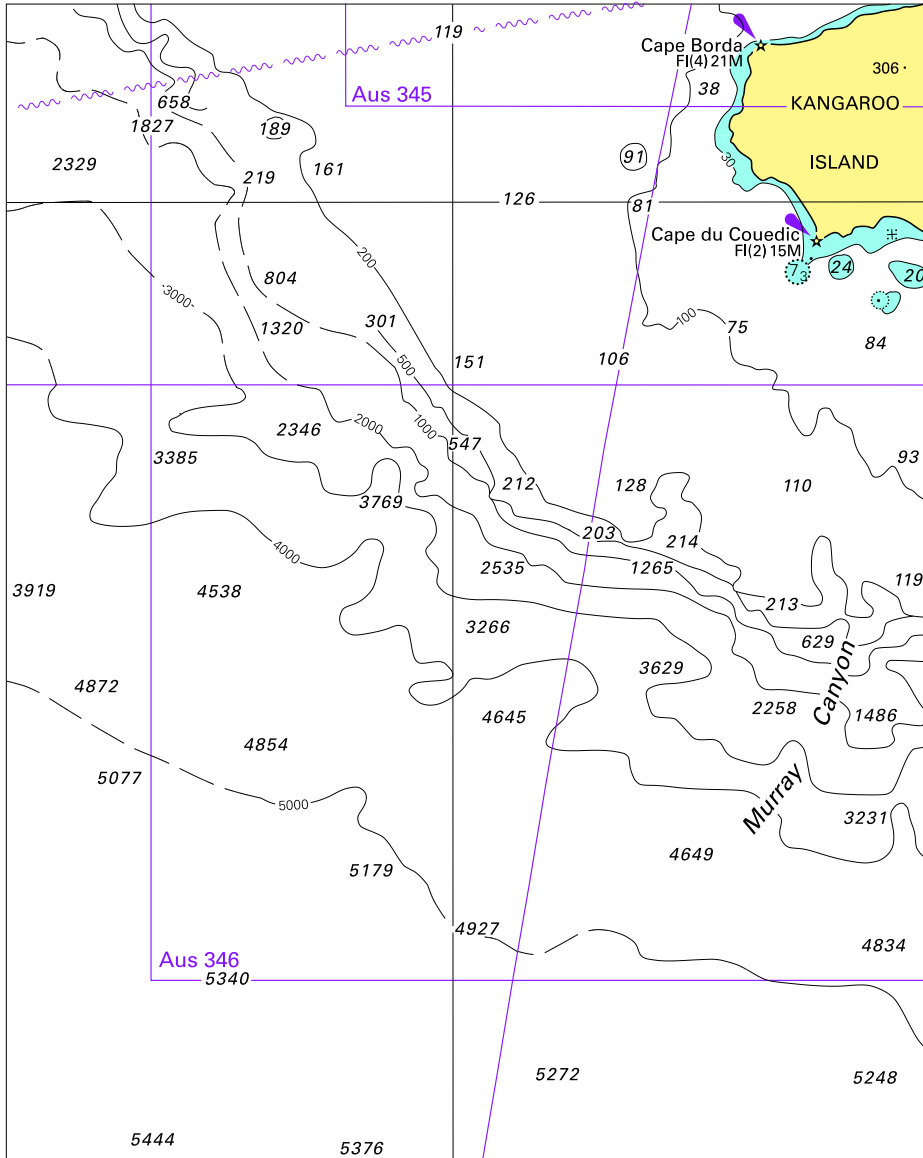


Block for chart Aus 116

© Commonwealth of Australia

(173.4 x 124.6mm)

To accompany Australian Notice to Mariners 311/2009



Block for chart Aus 4727

© Commonwealth of Australia 2009

(122.3 x 152.9mm)