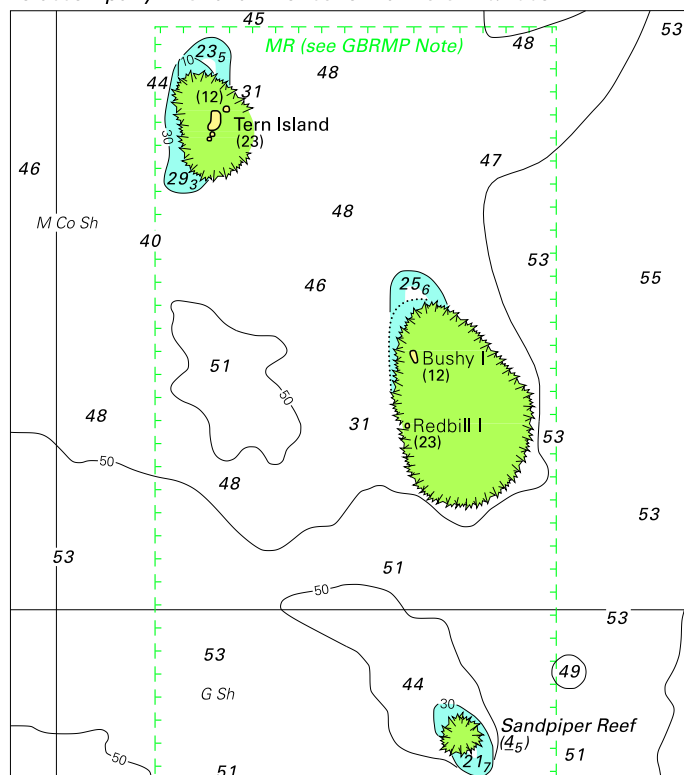


To accompany Australian Notice to Mariners 240/2009

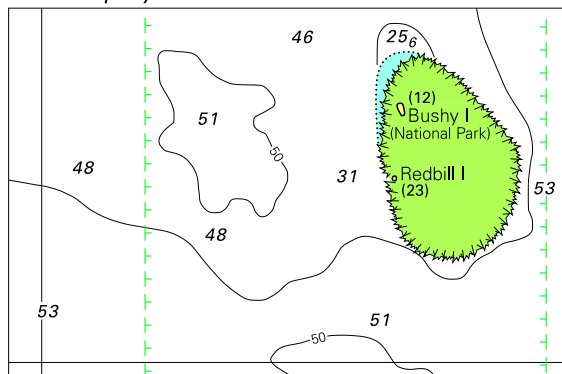


© Commonwealth of Australia 2009

Block for chart Aus 821

(89.6 x 101.7mm)

To accompany Australian Notice to Mariners 240/2009

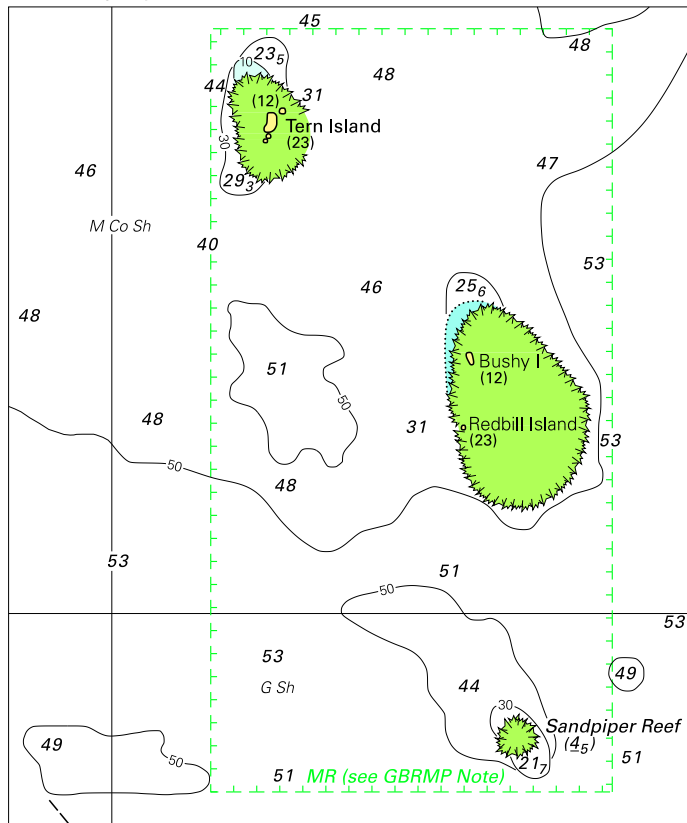


© Commonwealth of Australia 2009

Block for chart Aus 823

(74.1 x 48.9mm)

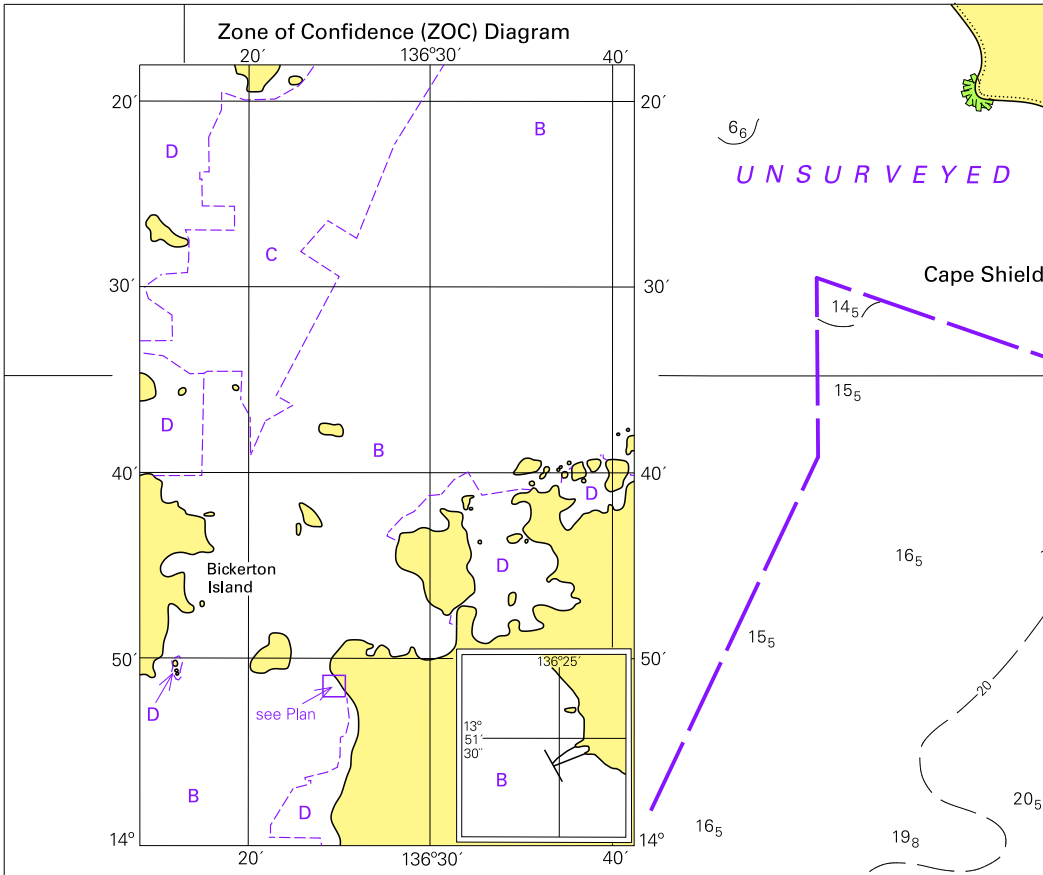
To accompany Australian Notice to Mariners 240/2009



© Commonwealth of Australia 2009

Block for chart Aus 824

(89.8 x 108.3mm)



(13719 x 2693.3mm)

ZOC CATEGORIES

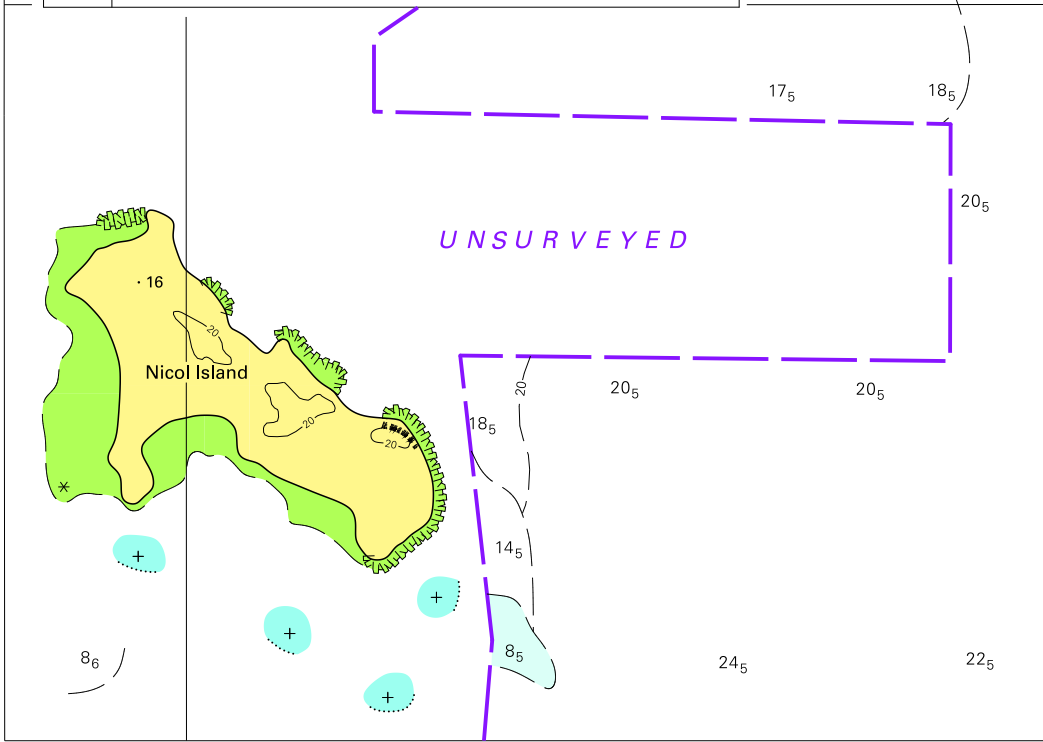
(For details see Australian Seafarers Handbook, AHP 20)

ZOC	POSITION ACCURACY	DEPTH ACCURACY	SEAFLOOR COVERAGE
A1	±5m	=0.50m + 1% d	All significant seafloor features detected
A2	±20m	=1.00m + 2% d	All significant seafloor features detected
B	±50m	=1.00m + 2% d	Uncharted features hazardous to surface navigation are not expected but may exist
C	±500m	=2.00m + 5% d	Depth anomalies may be expected
D	Worse than ZOC C	Worse than ZOC C	Large depth anomalies may be expected
U	Unassessed - The quality of the bathymetric data has yet to be assessed		

M

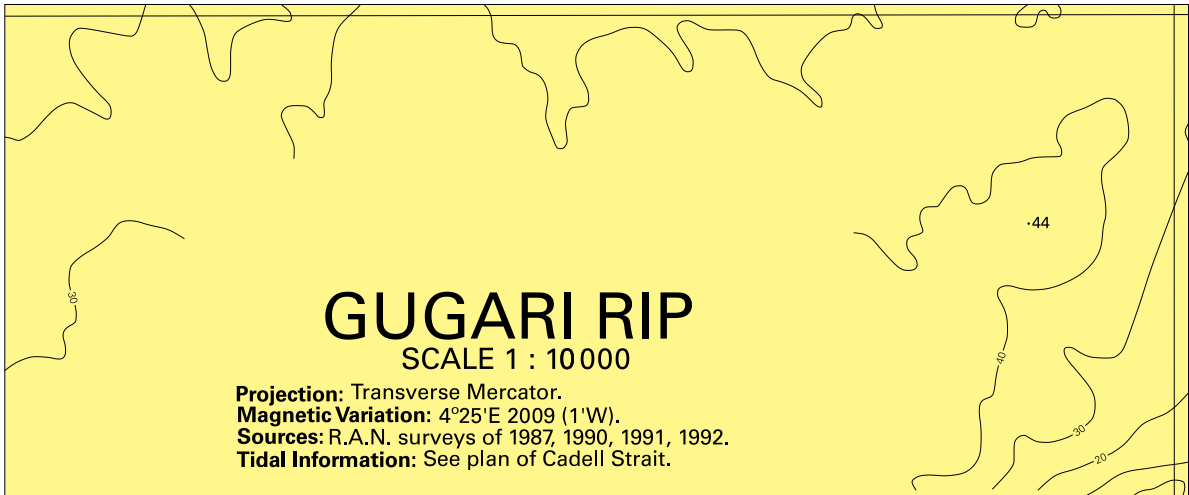
© Commonwealth of Australia 2009

To accompany Australian Notice to Mariners 244/2009



Block for chart Aus 14

To accompany Australian Notice to Mariners 245/2009

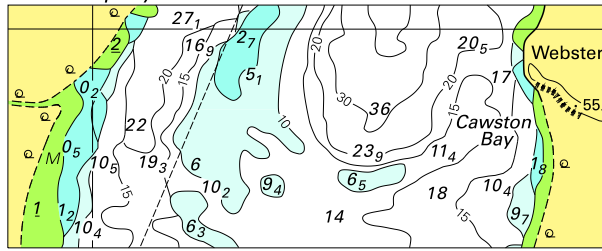


Block for chart Aus 15

© Commonwealth of Australia 2009

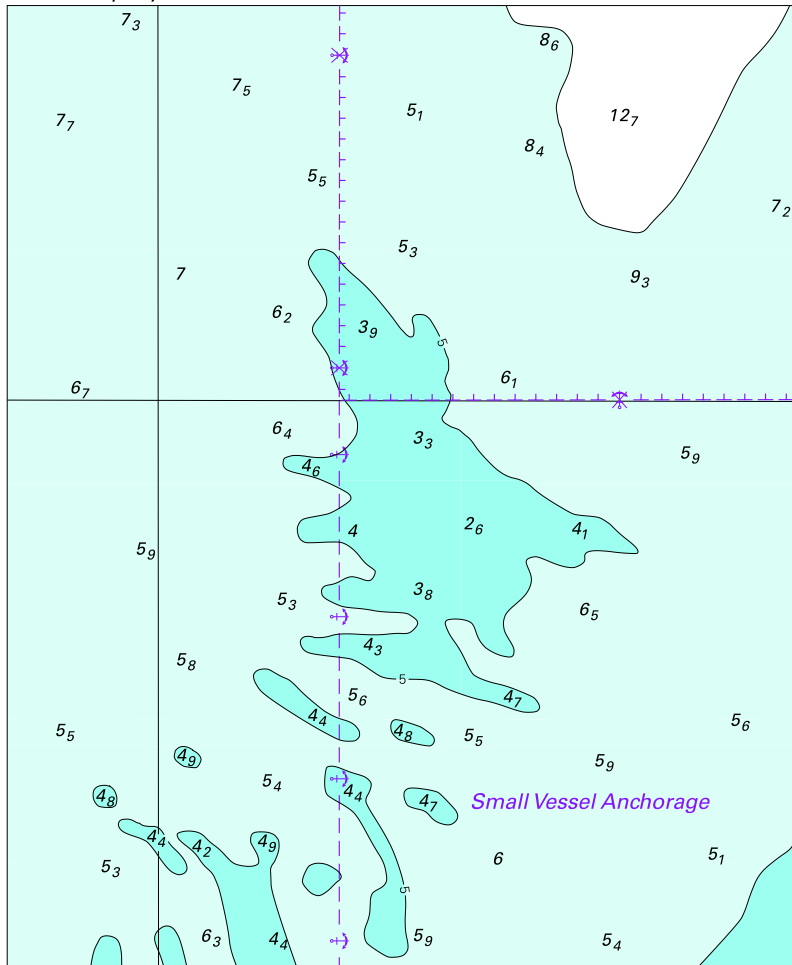
(156.6 x 65.0mm)

To accompany Australian Notice to Mariners 248/2009

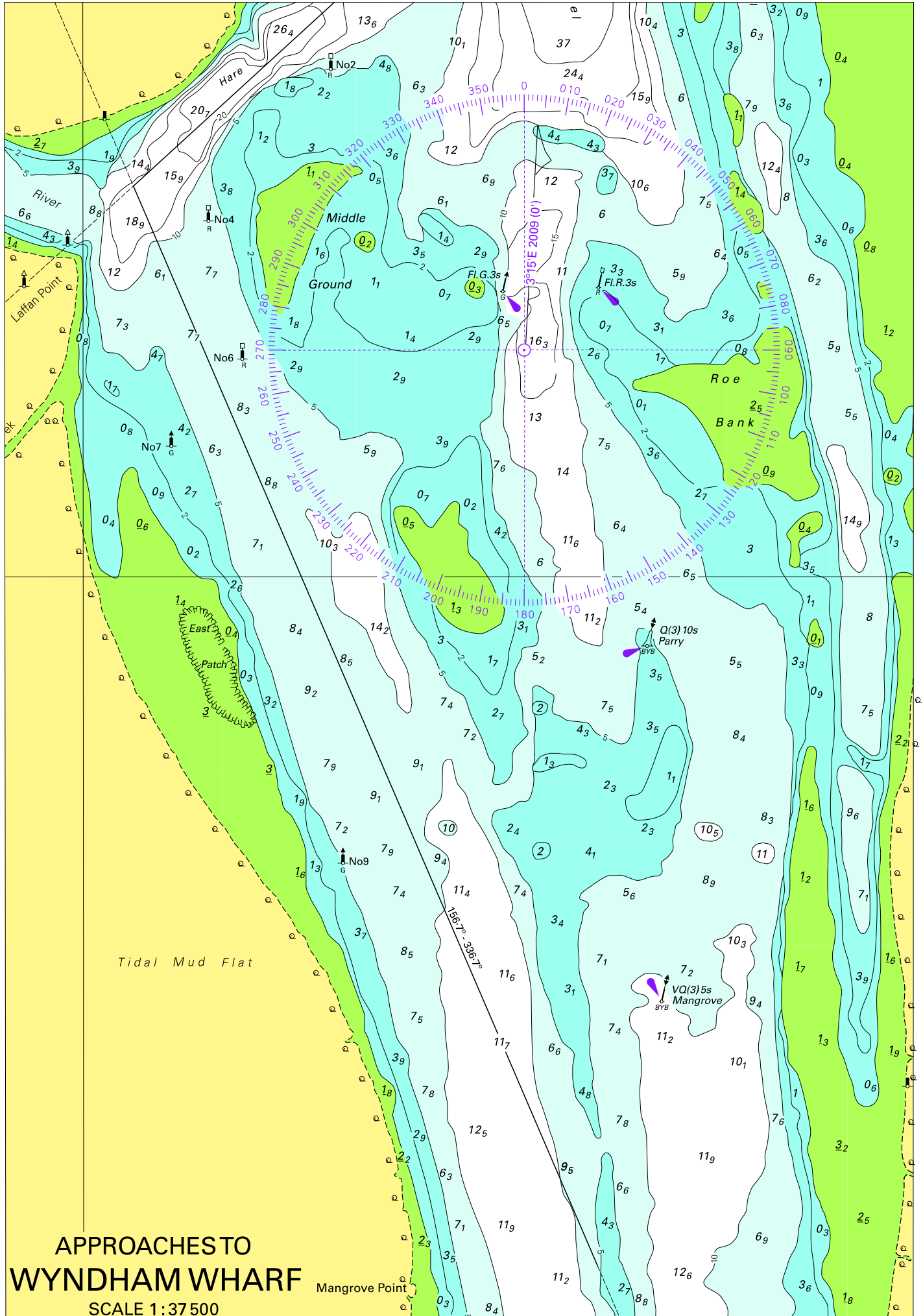


© Commonwealth of Australia 2009 (79.1 x 32.1mm)
Block for chart Aus 32

To accompany Australian Notice to Mariners 248/2009

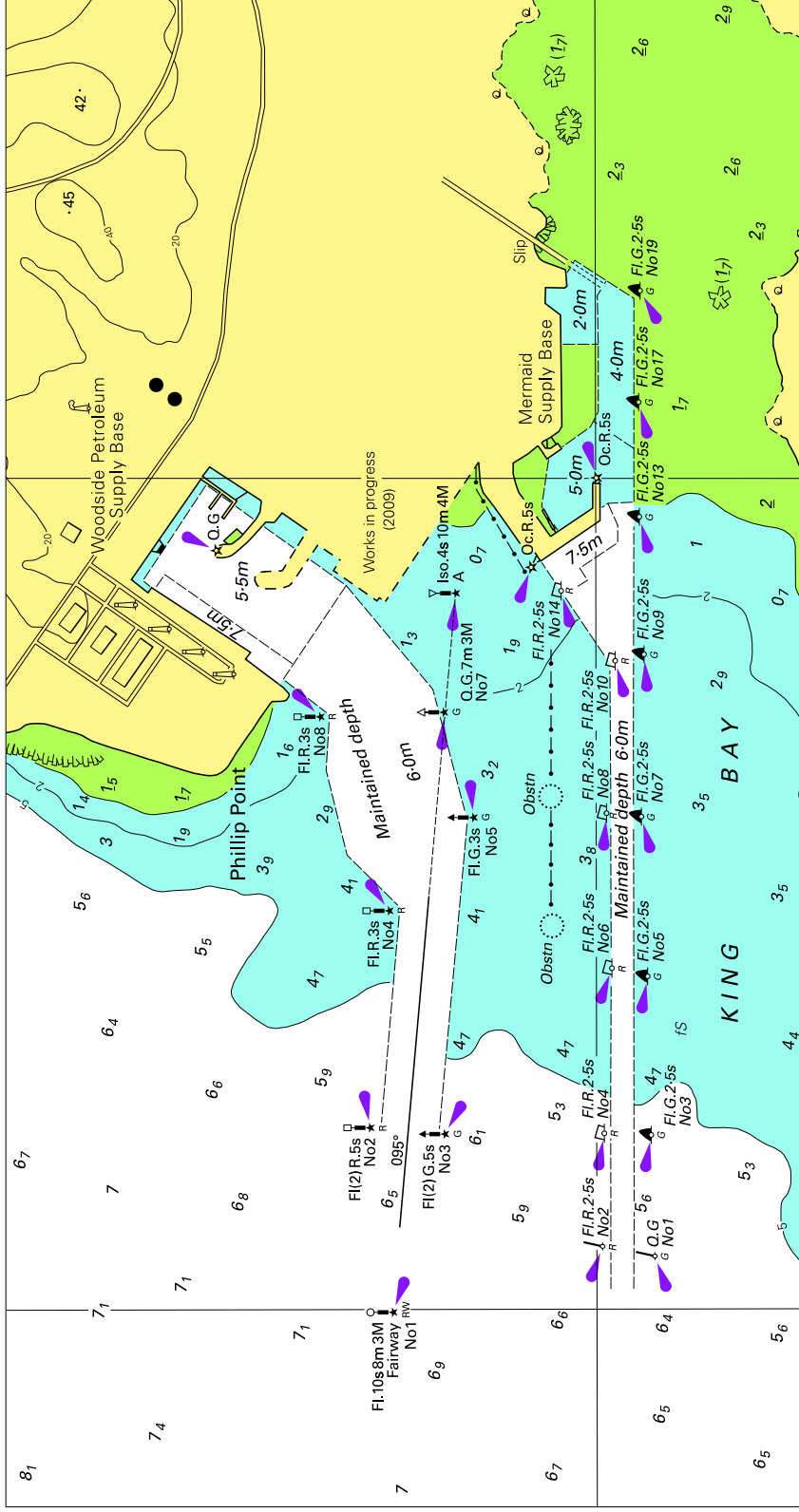


Block for chart Aus 32 © Commonwealth of Australia 2009 (104.4 x 127.0mm)



**APPROACHES TO
WYNDHAM WHARF**
SCALE 1:37 500

To accompany Australian Notice to Mariners 250/2009



Block for chart Aus 59

© Commonwealth of Australia 2009

(210:1 x 111:1mm)

To accompany Australian Notice to Mariners 252/2009

