

To accompany Australian Notice to Mariners 181/2009

| | | | | | | | | | | |
|-------|--|------|--------------|--------------|--------------|--------------|--|-------|-------|--|
| 54150 | SUAI 9° 21' S, 125° 16' E -0900 | 1.78 | 0.744 | 0.382 | 0.343 | 0.214 | | 0.003 | 0.011 | |
| | | | 1.8 | 55.6 | 317.1 | 297.3 | | 325.0 | 293.2 | |

To accompany Australian Notice to Mariners 181/2009 (continued)

| | | | | | | | | | | |
|-------|-------|-------|-------|-------|-------|-------|-------|-------|-------|------------|
| 54150 | 0.040 | 0.096 | 0.127 | 0.107 | 0.032 | 0.003 | 0.016 | 0.018 | 0.002 | HYDRO 2000 |
| | 283.6 | 319.0 | 347.2 | 53.9 | 31.9 | 29.6 | 114.4 | 177.4 | 15.8 | |

To accompany Australian Notice to Mariners 181/2009

| | | | | | | | | | | |
|-------|--|------|--------------|--------------|--------------|--------------|--|-------|-------|--|
| 63014 | EAST HOLOTHURIA RF 13° 34' S, 126° 1' E -0800 | 1.99 | 0.971 | 0.652 | 0.408 | 0.228 | | 0.054 | 0.034 | |
| | | | 323.3 | 28.5 | 330.9 | 309.8 | | 302.9 | 0.4 | |

To accompany Australian Notice to Mariners 181/2009 (continued)

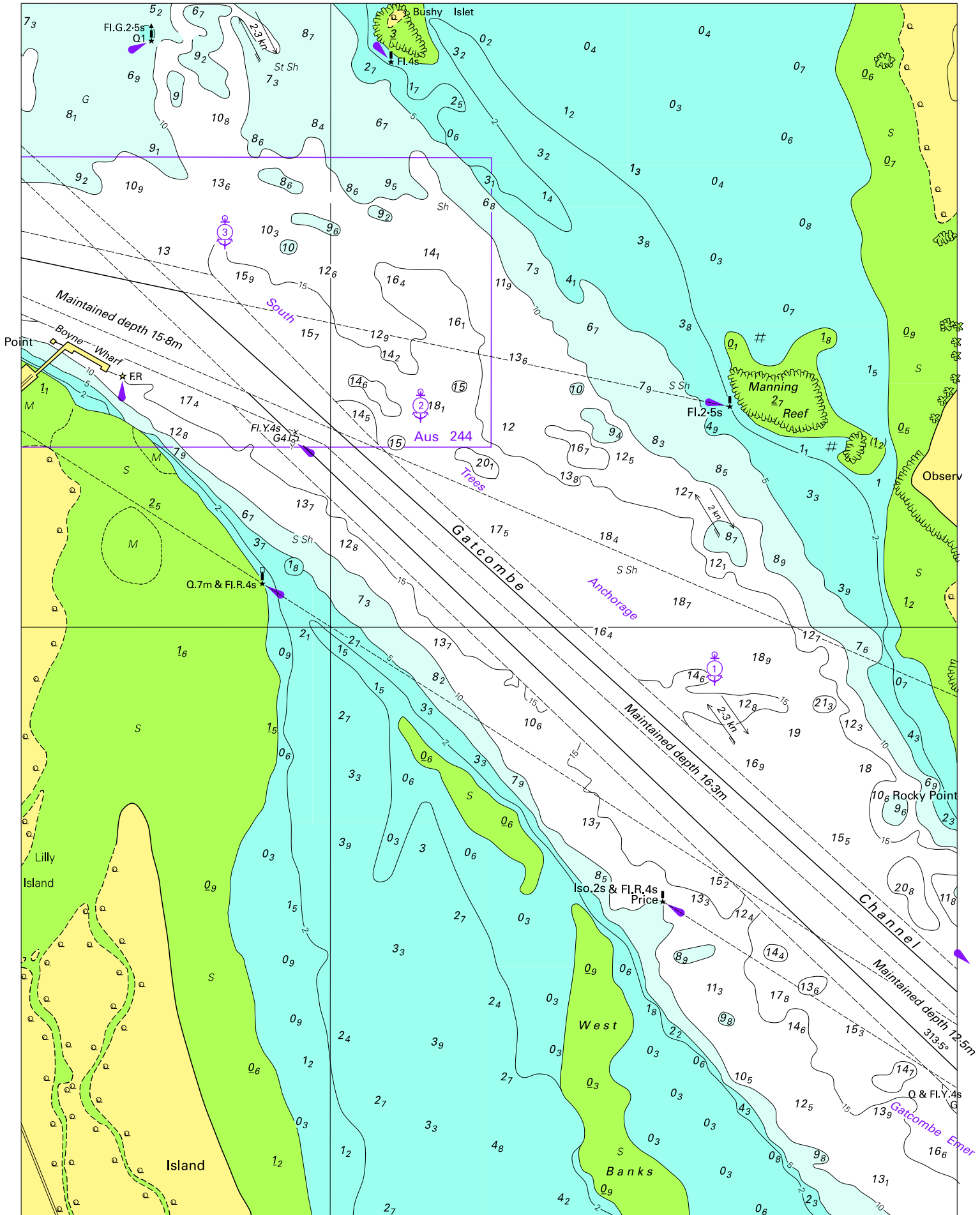
| | | | | | | | | | | |
|-------|-------|-------|-------|-------|-------|-------|-------|-------|-------|------------|
| 63014 | 0.047 | 0.118 | 0.143 | 0.188 | 0.044 | 0.029 | 0.018 | 0.016 | 0.004 | |
| | 303.7 | 331.9 | 303.5 | 27.5 | 354.2 | 71.0 | 279.5 | 351.7 | 284.0 | HYDRO 1986 |

To accompany Australian Notice to Mariners 181/2009 (continued)

| | | | | | | | | | |
|-------|---|------|--------------|--------------|--------------|--------------|--|--------------|-------------|
| 63370 | PORT ESSINGTON 11° 3' S, 132° 2' E -0930 | 1.63 | 0.540 | 0.199 | 0.256 | 0.201 | | 0.027 | 0.018 |
| | | | 109.3 | 179.2 | 350.5 | 335.7 | | 279.9 | 54.7 |

| | | | | | | | | | | |
|-------|-------|-------|-------|-------|-------|-------|-------|-------|-------|------------|
| 63370 | 0.061 | 0.071 | 0.135 | 0.056 | 0.018 | 0.051 | 0.025 | 0.042 | 0.005 | HYDRO 2007 |
| | 324.9 | 352.9 | 80.8 | 177.9 | 257.6 | 14.2 | 57.1 | 125.9 | 158.5 | |

To accompany Australian Notice to Mariners 184/2009

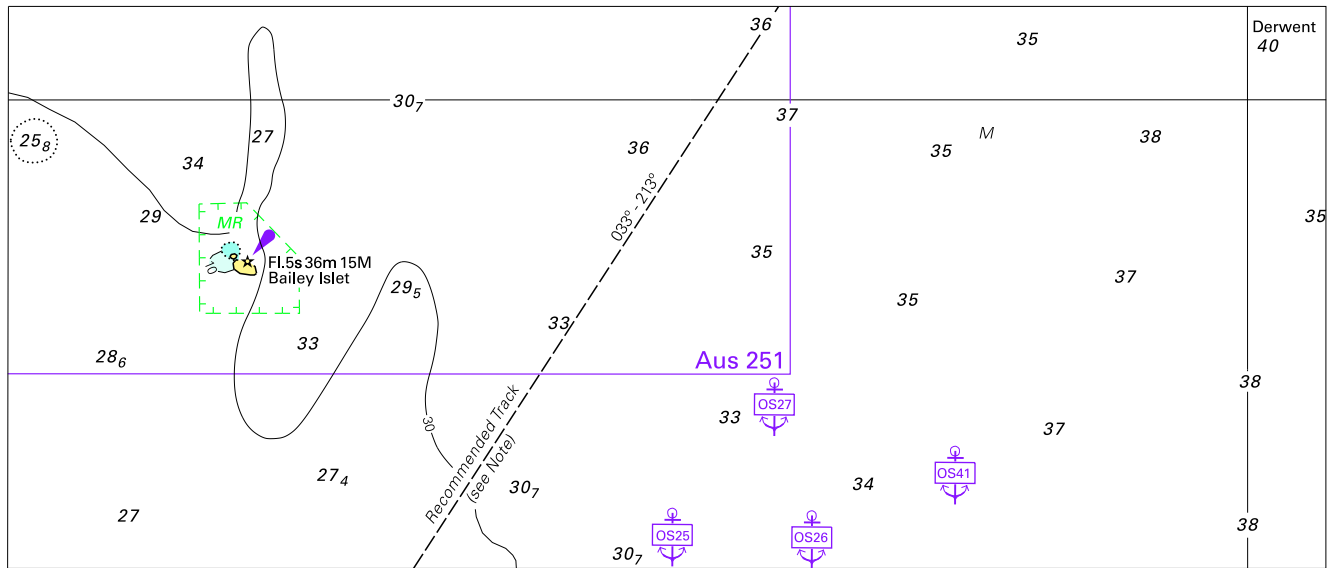


Block for chart Aus245

© Commonwealth of Australia 2009

(193.9 x 251.2mm)

To accompany Australian Notice to Mariners 186/2009

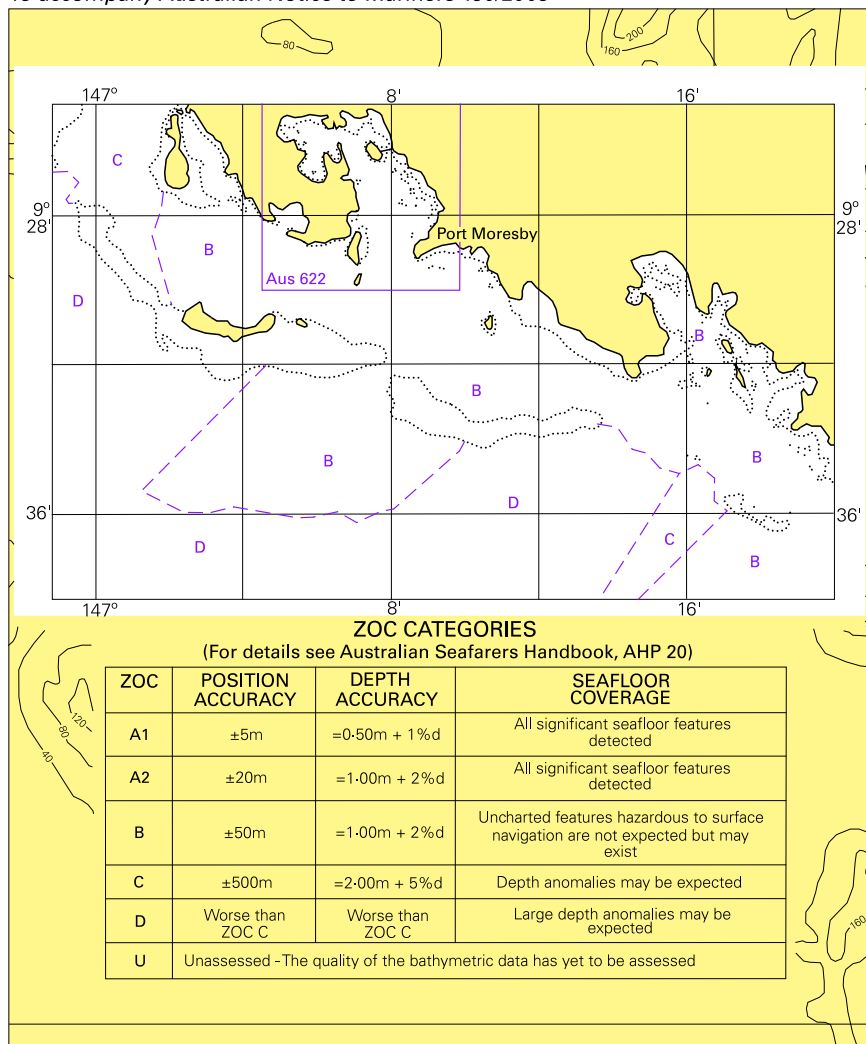


Block for chart Aus 824

© Commonwealth of Australia 2009

(174.3 x 74.3mm)

To accompany Australian Notice to Mariners 190/2009



Block for chart Aus 621

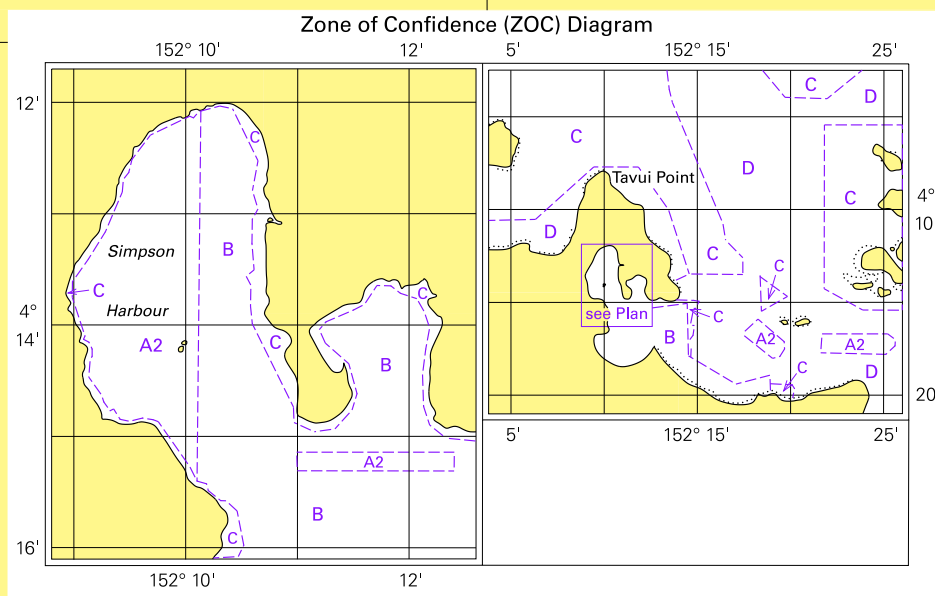
© Commonwealth of Australia 2009

(114.3 x 137.4mm)

SIMPSON AND MATUPIT HARBOURS

1:12 500

Projection: Transverse Mercator

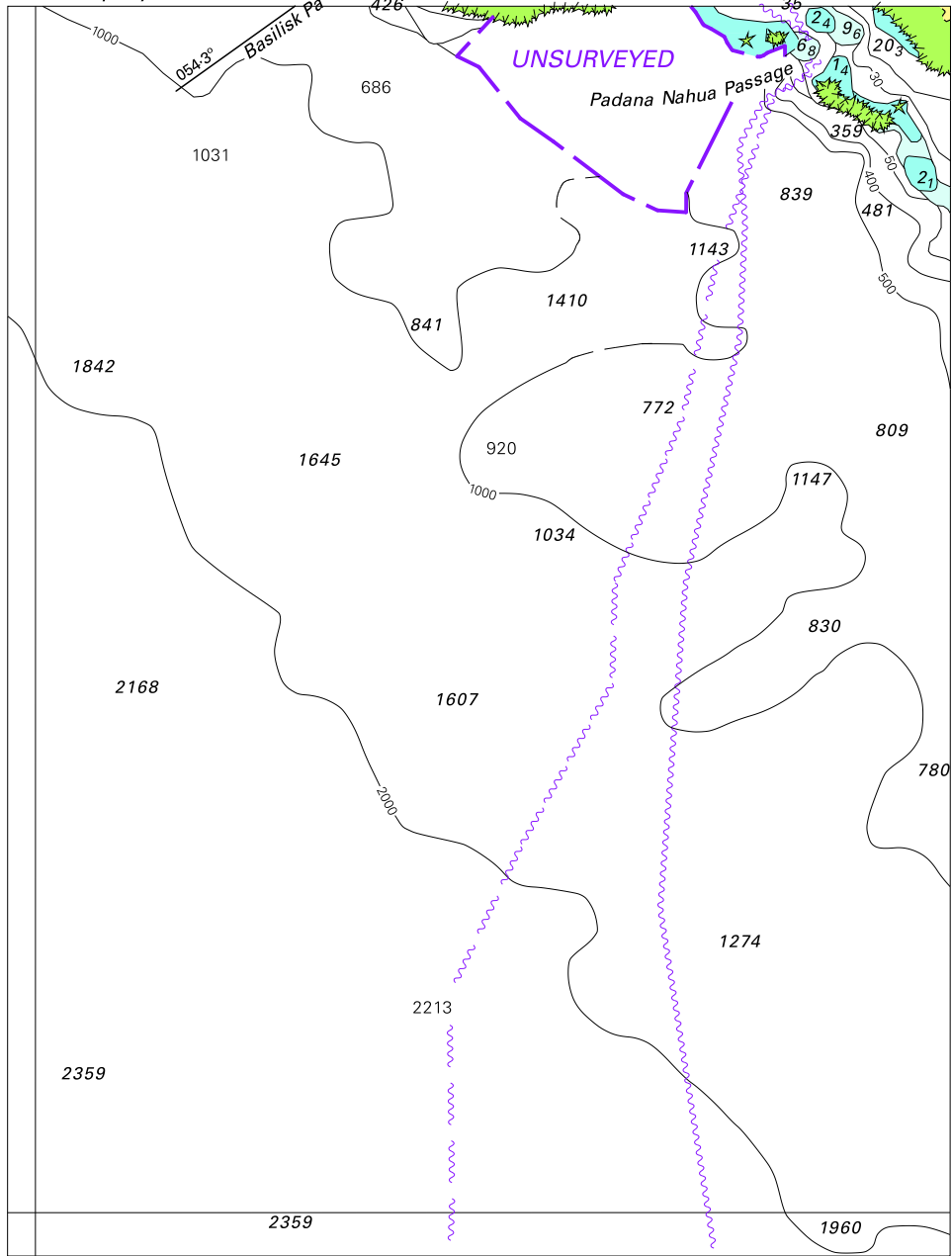


ZOC CATEGORIES

(For details see Australian Seafarers Handbook, AHP 20)

| ZOC | POSITION ACCURACY | DEPTH ACCURACY | SEAFLOOR COVERAGE |
|-----|--|------------------|--|
| A1 | ±5m | =0.50m + 1% d | All significant seafloor features detected. |
| A2 | ±20m | =1.00m + 2% d | All significant seafloor features detected. |
| B | ±50m | =1.00m + 2% d | Uncharted features hazardous to surface navigation are not expected but may exist. |
| C | ±500m | =2.00m + 5% d | Depth anomalies may be expected. |
| D | Worse than ZOC C | Worse than ZOC C | Large depth anomalies may be expected. |
| U | Unassessed - The quality of the bathymetric data has yet to be assessed. | | |

To accompany Australian Notice to Mariners 191/2009

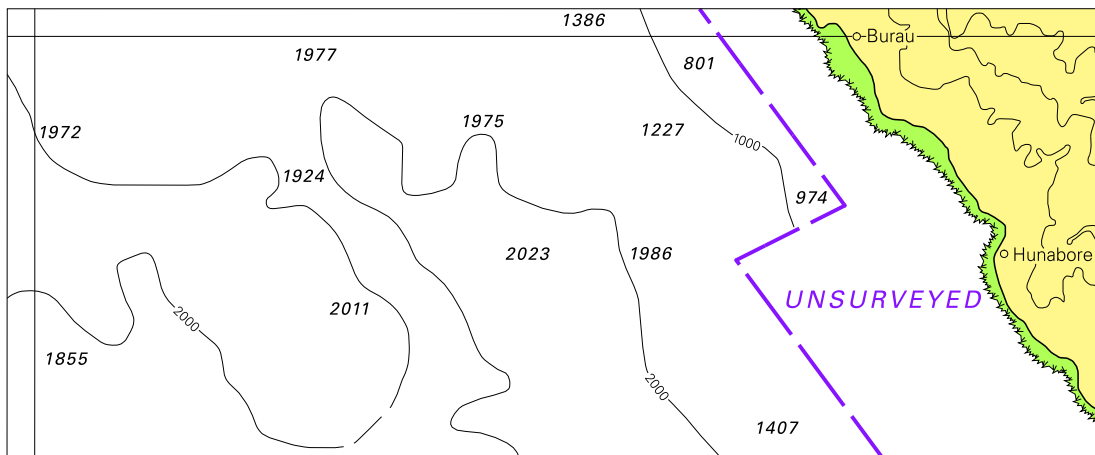


Block for chart Aus 379

© Commonwealth of Australia 2009

(126.1 x 167.1mm)

To accompany Australian Notice to Mariners 193/2009

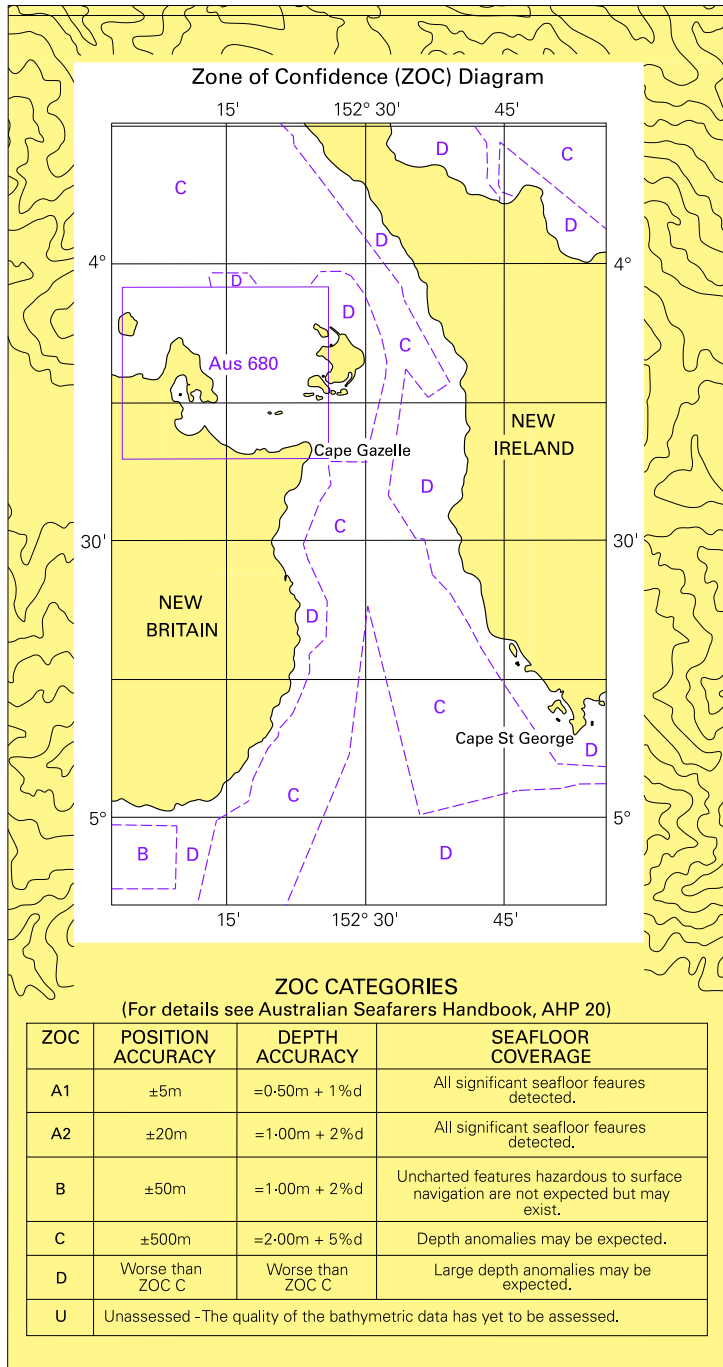


Block for chart Aus 554

© Commonwealth of Australia 2009

(144.6 x 59.4mm)

To accompany Australian Notice to Mariners 193/2009



© Commonwealth of Australia 2009

Block for chart Aus 554

(96.2 x 180.9mm)

