

*To accompany Australian Notice to Mariners 130/2009*

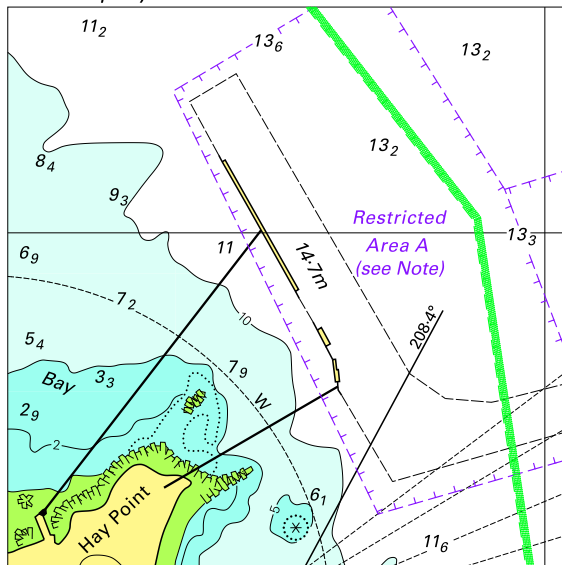
59070	<b>GREEN I.</b> 16° 45' S, 145° 58' E -1000                      0.0	1.54	<b>0.543</b>	<b>0.314</b>	<b>0.289</b>	<b>0.154</b>	0.092	0.017	0.048	0.012		
			<b>275.4</b>	<b>243.2</b>	<b>186.9</b>	<b>152.6</b>	0.3	14.2	269.0	233.3		

*To accompany Australian Notice to Mariners 130/2009 continued*

59070	0.025	0.087	0.174		0.086	0.009		0.021		0.005	0.003	0.012	HYDRO 1999
	123.4	183.1	250.2		240.1	246.8		255.9		27.1	91.1	85.3	



To accompany Australian Notice to Mariners 140/2009

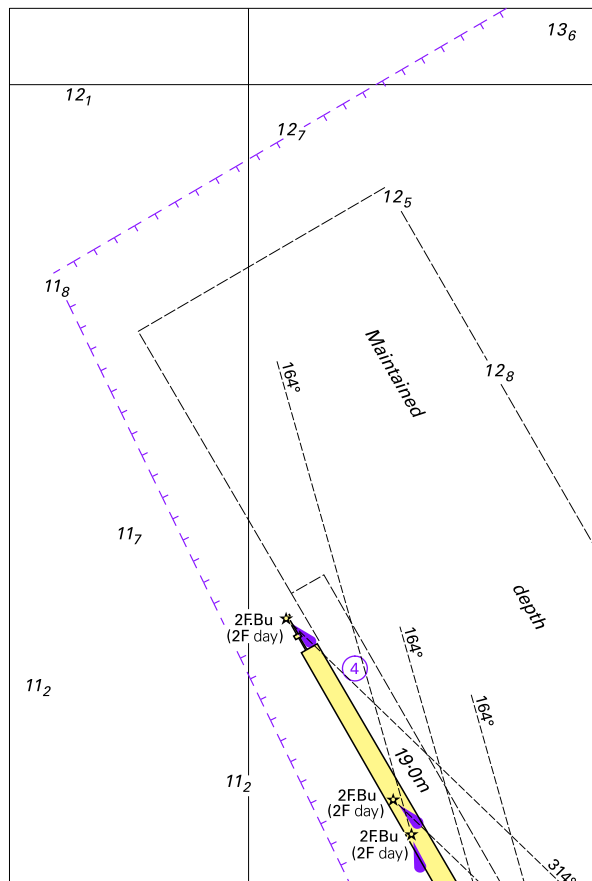


© Commonwealth of Australia 2009

Block for chart Aus 249

(74.2 x 74.0mm)

To accompany Australian Notice to Mariners 140/2009



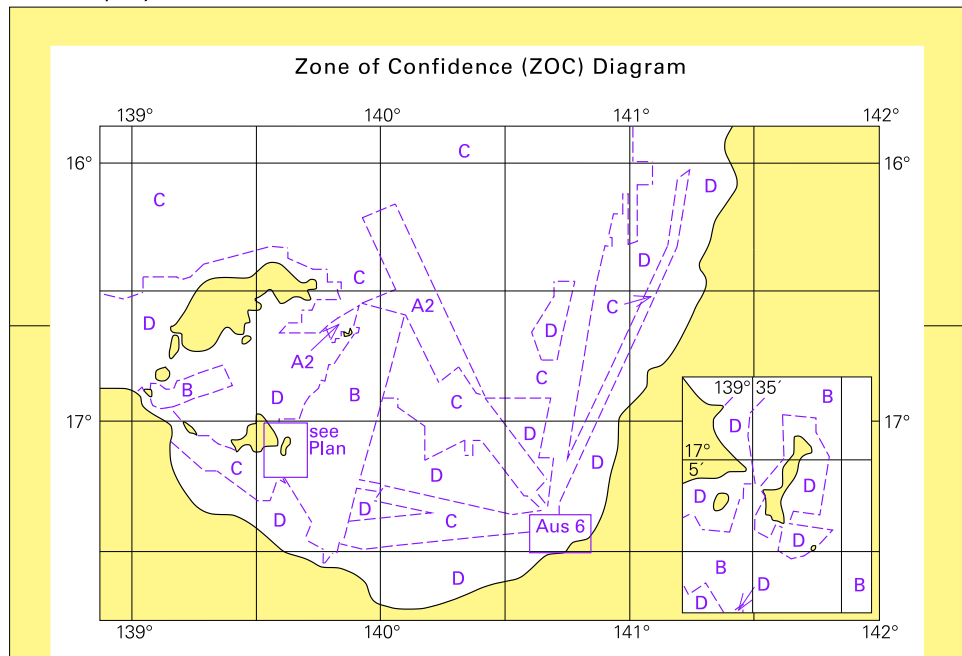
© Commonwealth of Australia 2009

Block for chart Aus 250

(78.3 x 116.1mm)



To accompany Australian Notice to Mariners 150/2009

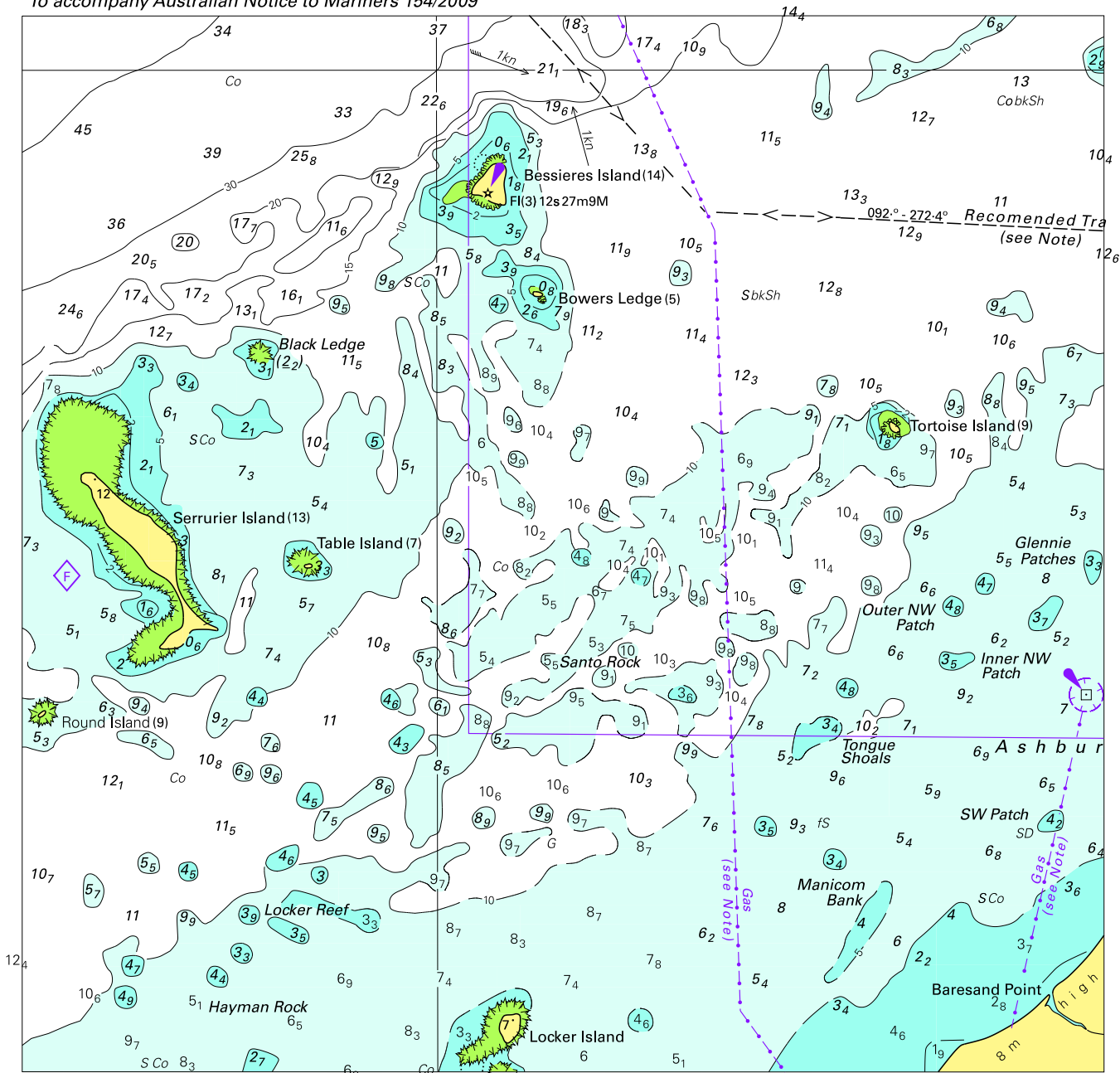


Block for chart Aus 303

© Commonwealth of Australia 2009

(127·3 x 86·5mm)

To accompany Australian Notice to Mariners 154/2009

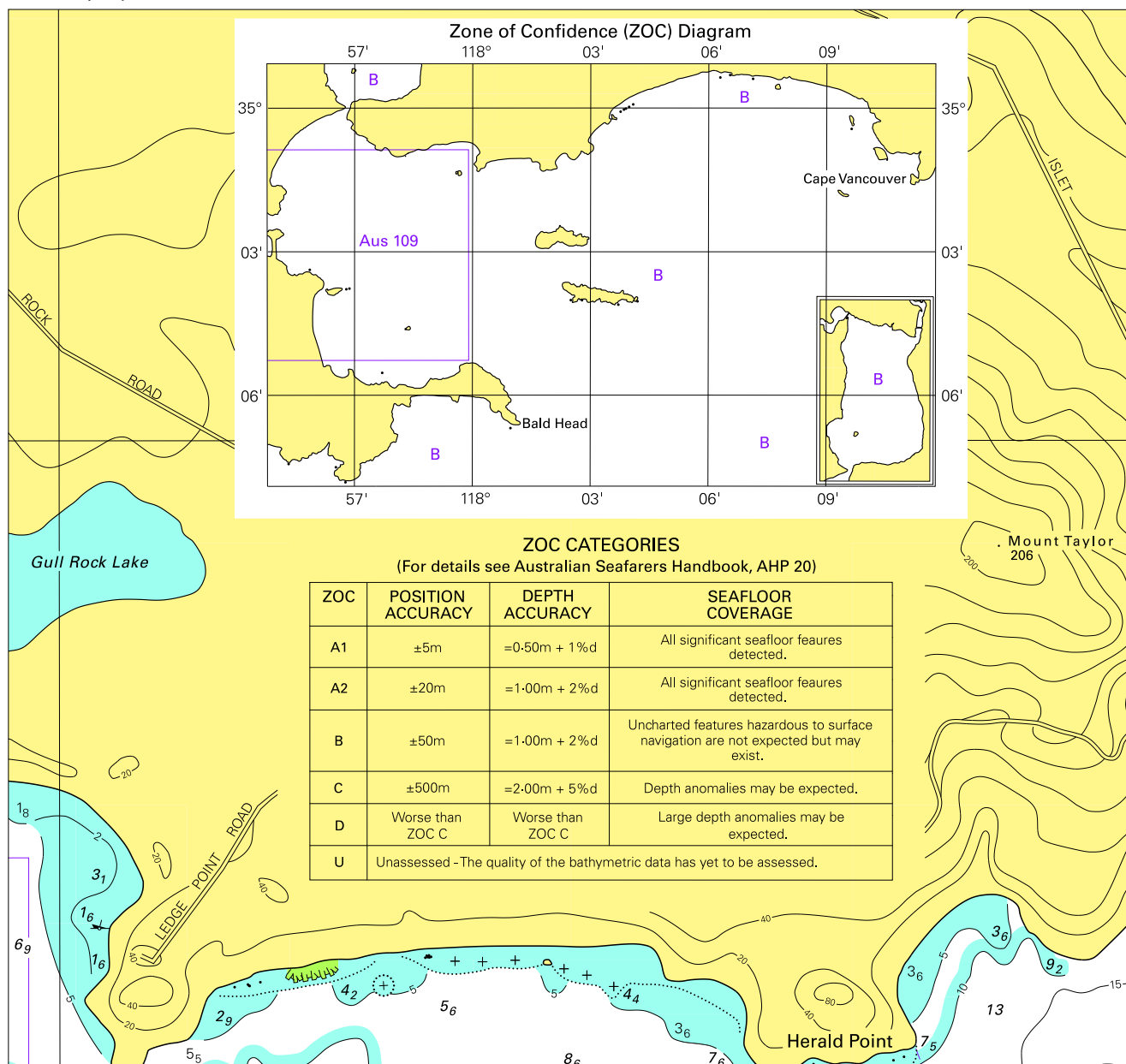


Block for chart Aus 744

© Commonwealth of Australia 2009

(172.6 x 168.4mm)

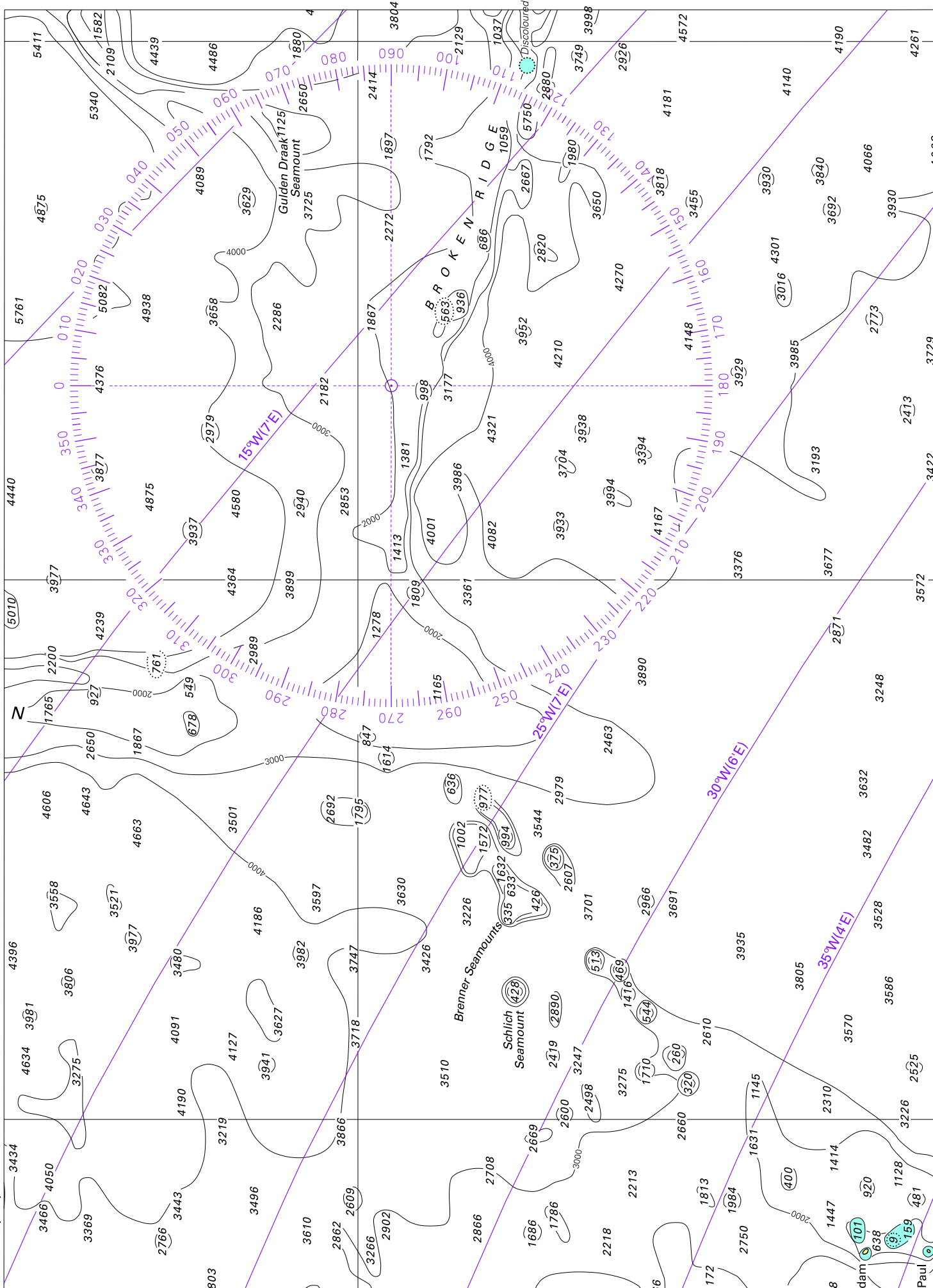
To accompany Australian Notice to Mariners 156/2009



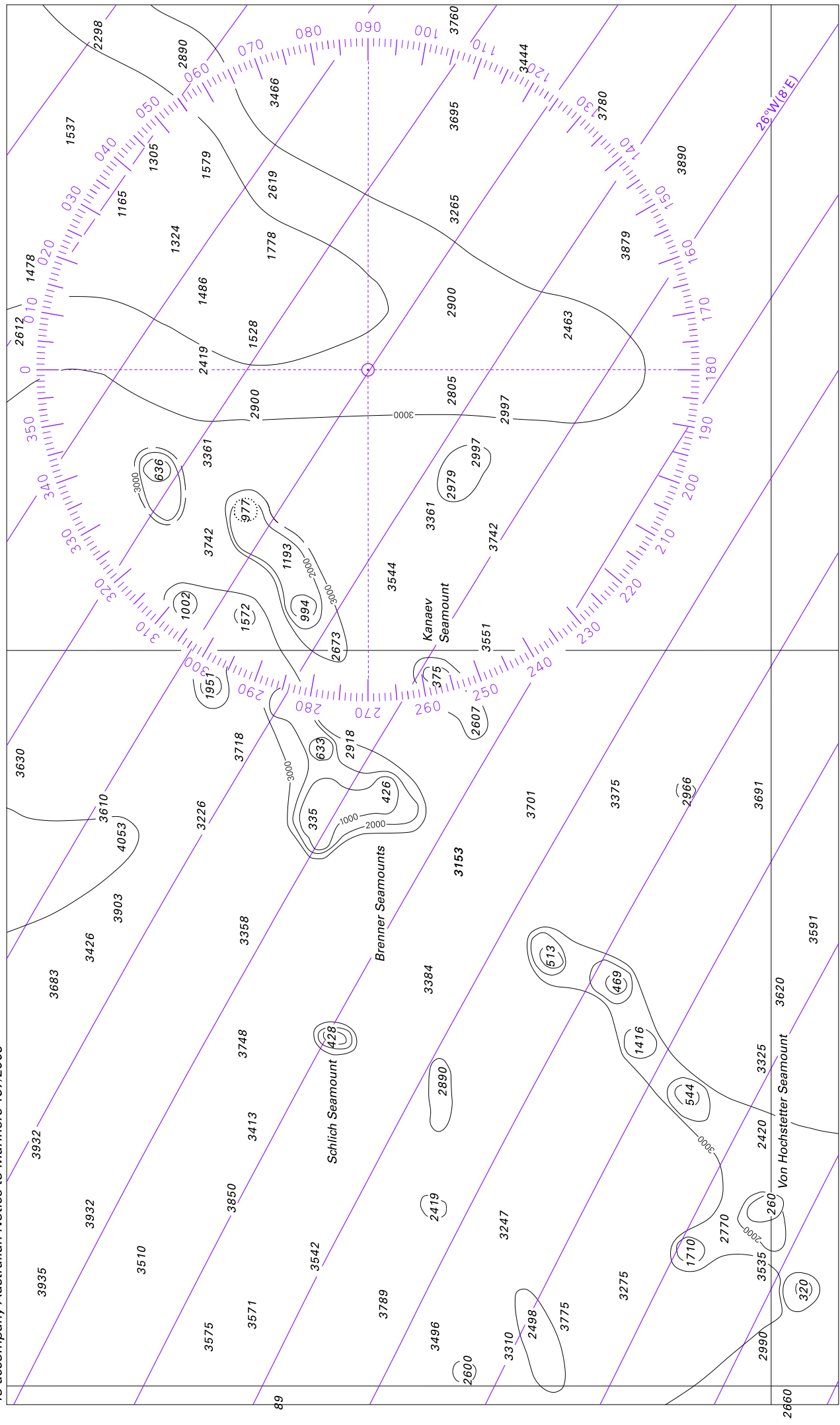
Block for chart Aus 110

© Commonwealth of Australia 2009

(173.7 x 163.4mm)



To accompany Australian Notice to Mariners 157/2009

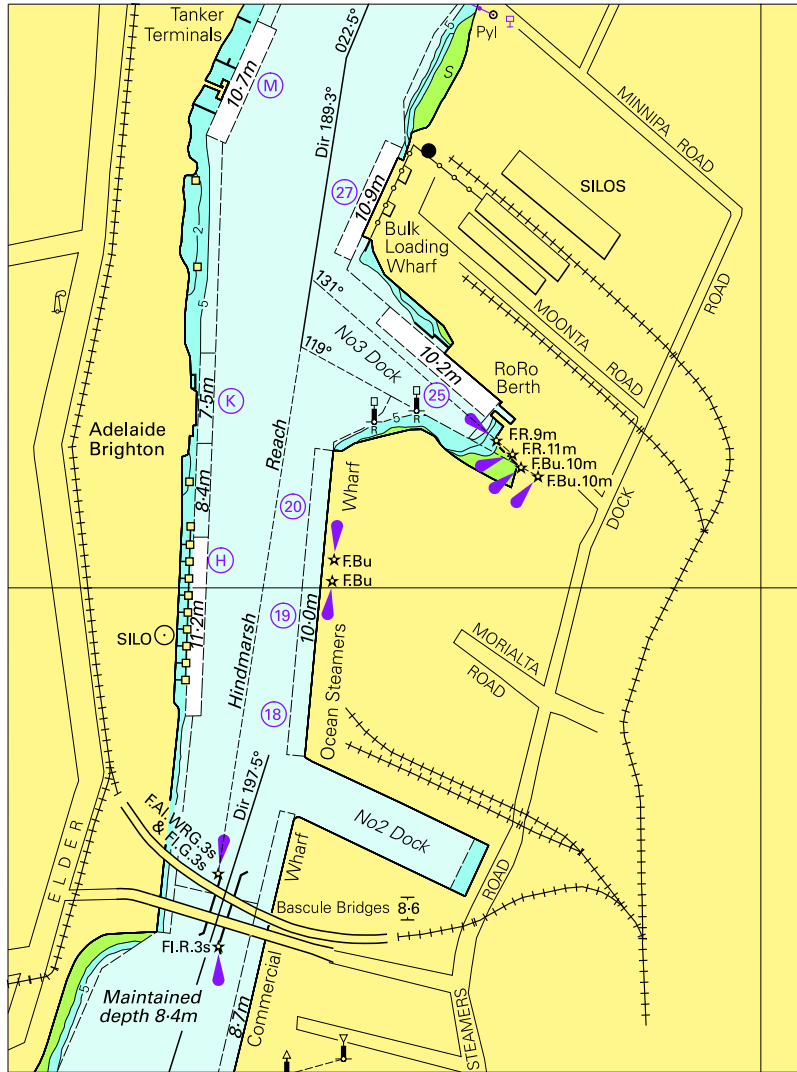


Block for chart Aus 4714

© Commonwealth of Australia 2009

(280.1 x 166.5mm)

To accompany Australian Notice to Mariners 159/2009

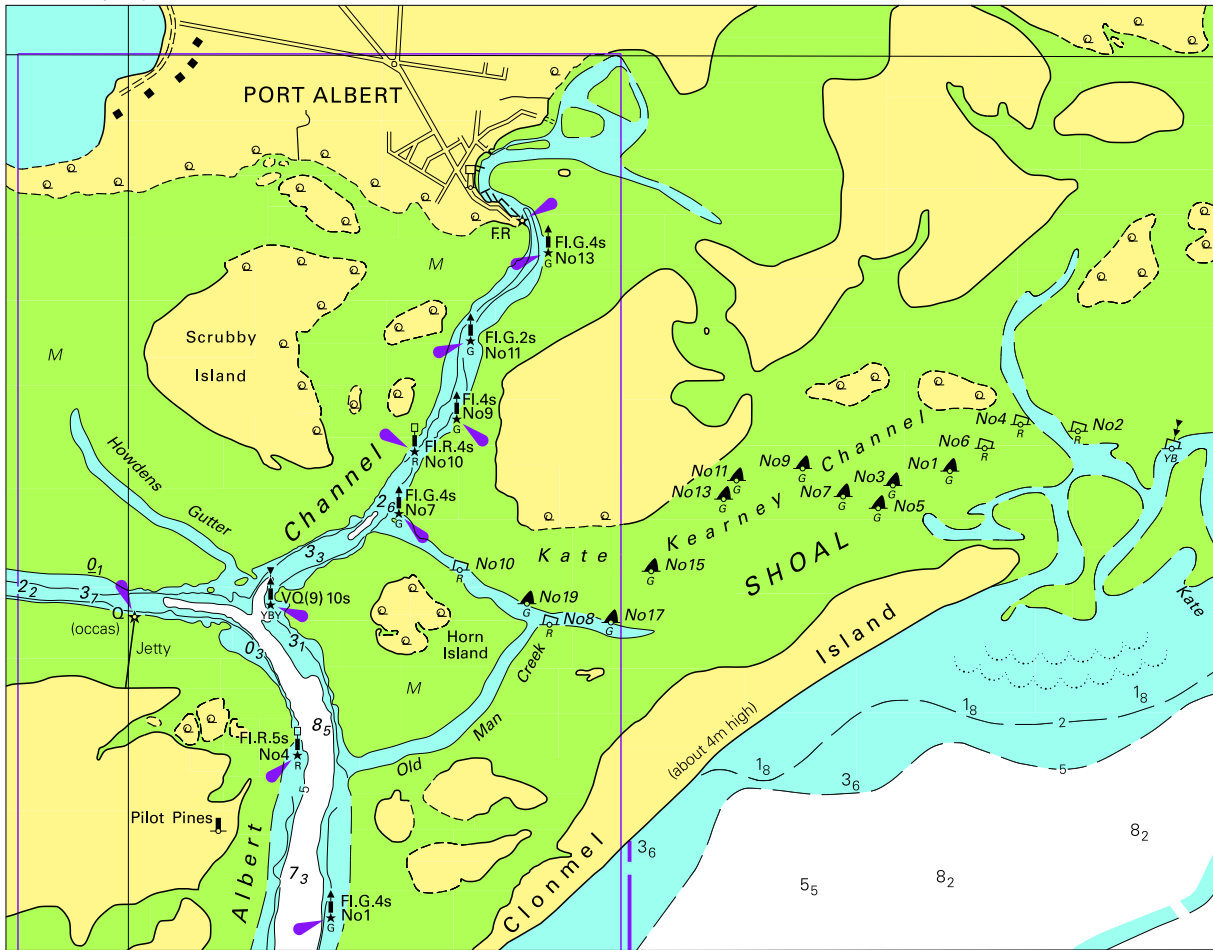


© Commonwealth of Australia 2009

Block for chart Aus 137

(105.6 x 141.3mm)

To accompany Australian Notice to Mariners 163/2009

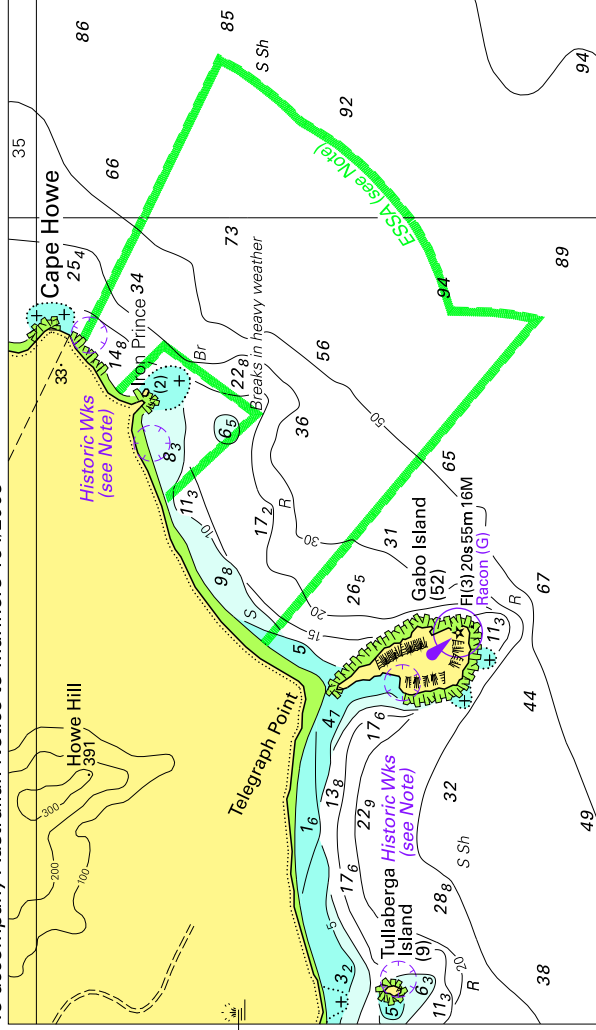


Block for chart Aus 181

© Commonwealth of Australia 2009

(159.8 x 124.9mm)

To accompany Australian Notice to Mariners 164/2009

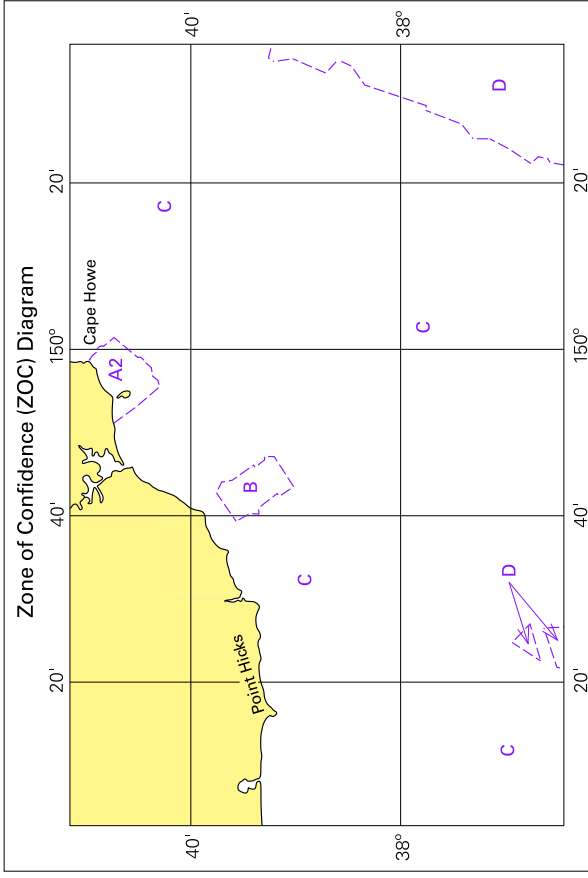


Bolck for chart Aus 805

© Commonwealth of Australia 2009

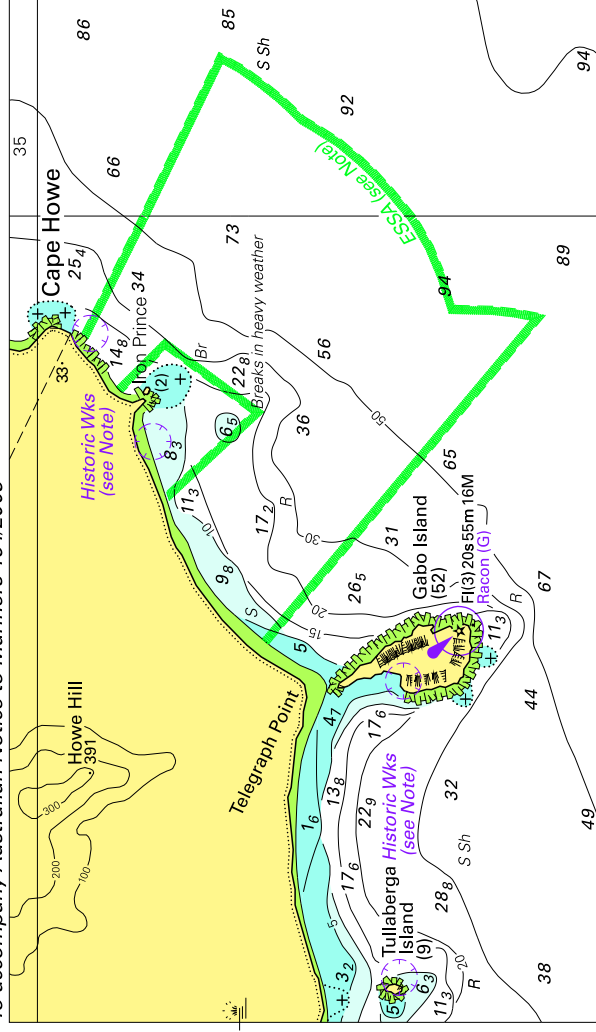
(135-516 x 78-344mm)

To accompany Australian Notice to Mariners 164/2009



Block for chart Aus805 © Commonwealth of Australia 2009 (115.1 x 78.0mm)

To accompany Australian Notice to Mariners 164/2009

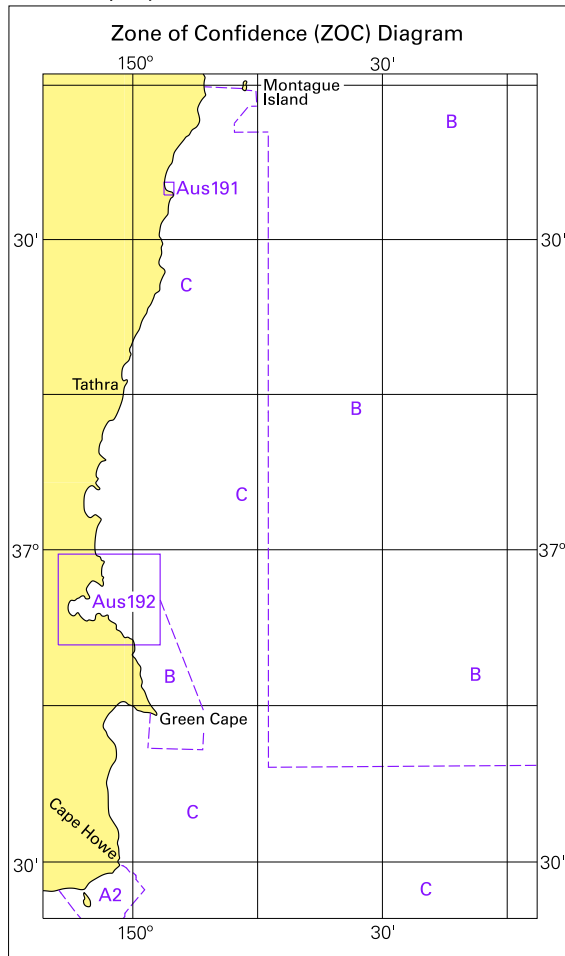


Bolck for chart Aus 806

© Commonwealth of Australia 2009

(135-516 x 78-344mm)

To accompany Australian Notice to Mariners 164/2009



© Commonwealth of Australia 2009  
Block for chart Aus806 (73.9 x 126.1mm)