

To accompany Australian Notice to Mariners 1351/2009

HISTORIC WRECK

The site of an historic wreck is protected from unauthorised interference. For details see Australian Seafarers Handbook AHP 20.

Note for chart Aus 209.

To accompany Australian Notice to Mariners 1351/2009

HISTORIC WRECK

The site of an historic wreck is protected from unauthorised interference. For details see Australian Seafarers Handbook AHP 20.

Note for chart Aus 216.

To accompany Australian Notice to Mariners 1370/2009

PORT PHILLIP HEADS ENTRANCE AND
SOUTH CHANNEL

Vessels planning to transit Port Phillip Heads must refer to Harbour Master's Directions and comply with general operating requirements in regard to under keel clearance. Additional allowance should be considered to compensate for vertical wave motion in prevailing swell conditions. For more information refer to Port of Melbourne Corporation "Operations Handbook" at www.portofmelbourne.com and Admiralty Sailing Directions NP14. Information on height of tide and swell can be obtained from Lonsdale VTS on VHF Ch 12.

Note for chart Aus 143.

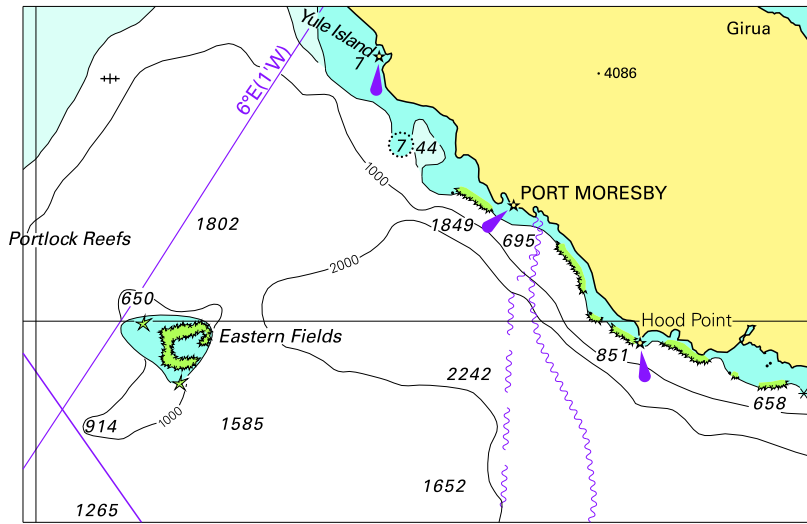
To accompany Australian Notice to Mariners 1370/2009

PORT PHILLIP HEADS ENTRANCE AND
SOUTH CHANNEL

Vessels planning to transit Port Phillip Heads must refer to Harbour Master's Directions and comply with general operating requirements in regard to under keel clearance. Additional allowance should be considered to compensate for vertical wave motion in prevailing swell conditions. For more information refer to Port of Melbourne Corporation "Operations Handbook" at www.portofmelbourne.com and Admiralty Sailing Directions NP14. Information on height of tide and swell can be obtained from Lonsdale VTS on VHF Ch 12.

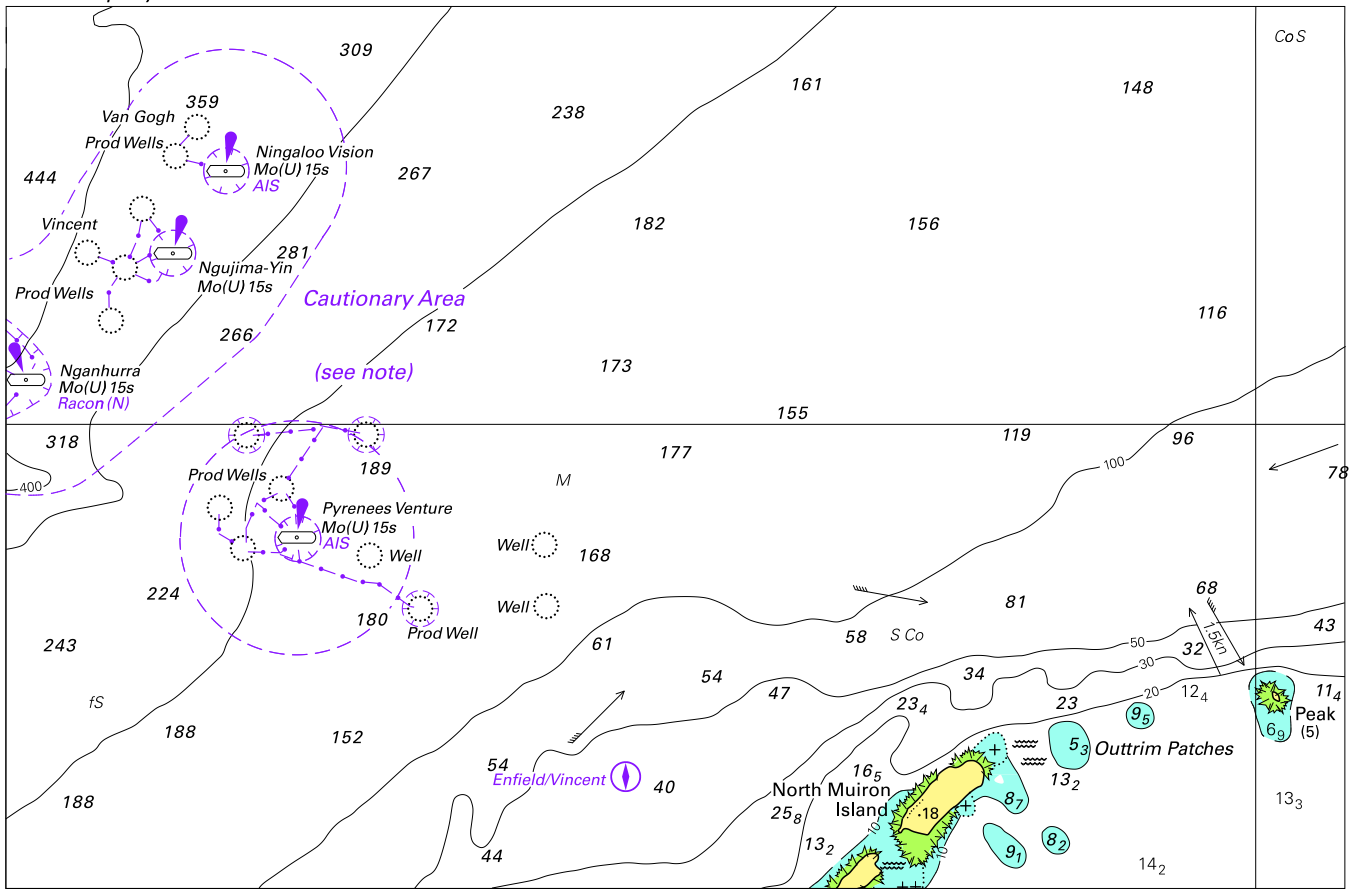
Note for chart Aus 158.

To accompany Australian Notice to Mariners 1358/2009



Block for chart Aus 4603 © Commonwealth of Australia 2009 (104.6 x 68.2mm)

To accompany Australian Notice to Mariners 1364/2009

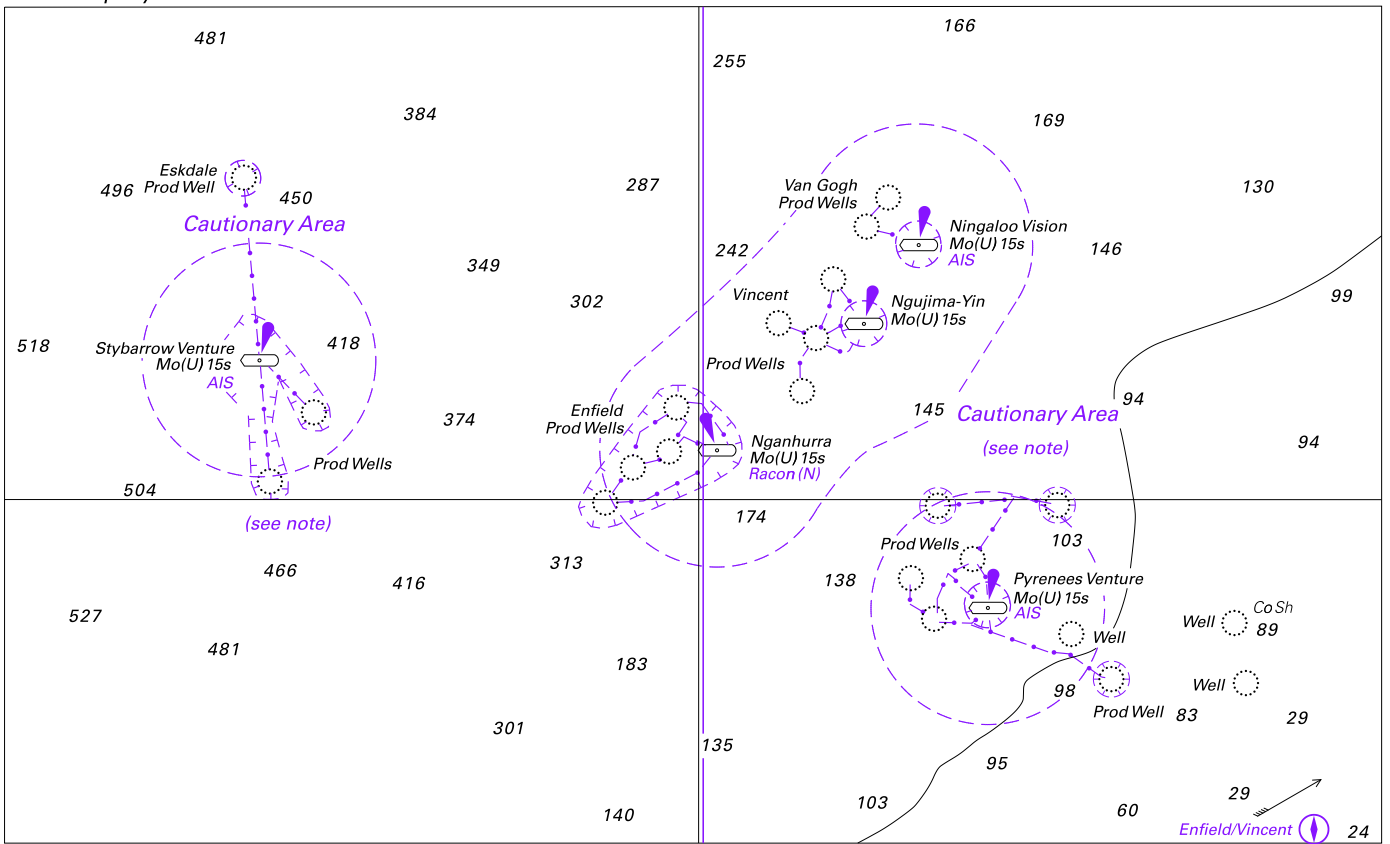


Block for chart Aus 328

© Commonwealth of Australia 2009

(177.1 x 116.6mm)

To accompany Australian Notice to Mariners 1364/2009

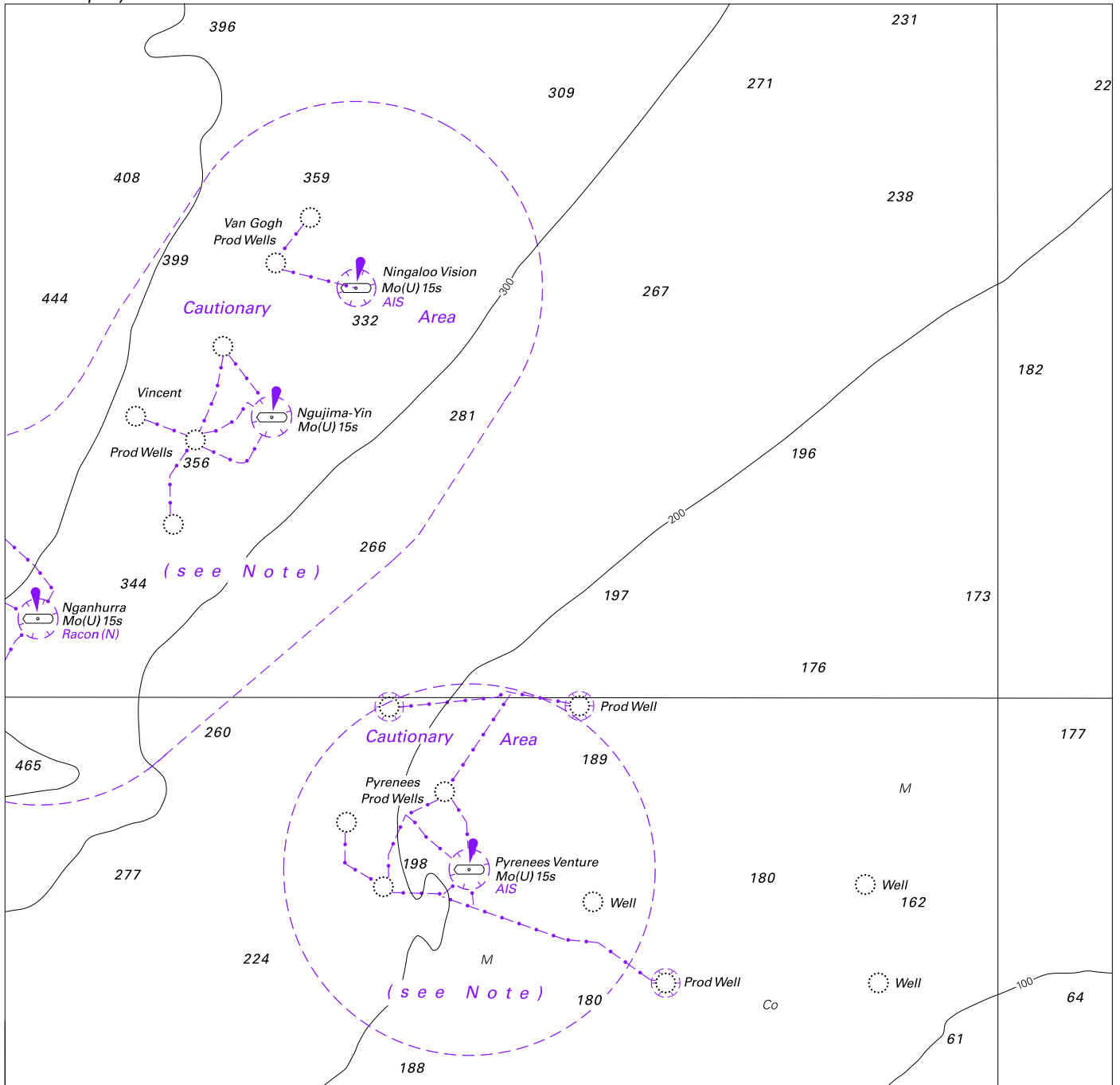


Block for chart Aus 329

© Commonwealth of Australia 2009

(182-1 x 110-5mm)

To accompany Australian Notice to Mariners 1364/2009

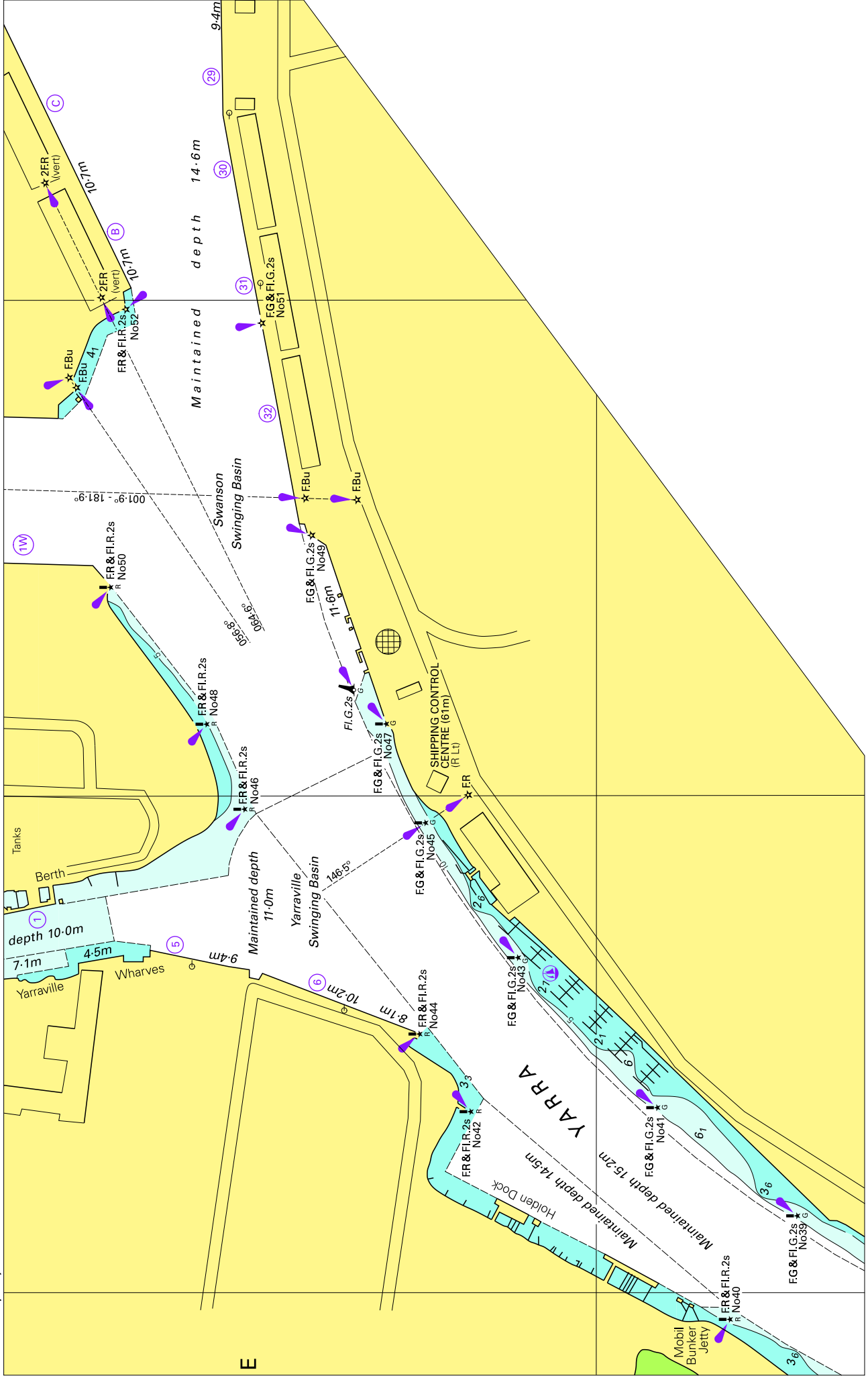


Block for chart Aus 744

© Commonwealth of Australia 2009

(184.0 x 180.3mm)

To accompany Australian Notice to Mariners 1372/2009



Block for chart Aus 154

© Commonwealth of Australia 2009

(271.1 x 169.7mm)