

To accompany Australian Notice to Mariners 1261/2009

GREAT BARRIER REEF MARINE PARK
(GBRMP)

Areas of this chart are part of the GBRMP which is within an IMO approved Particularly Sensitive Sea Area (PSSA). Legislative restrictions apply to access, discharge of waste and other activities within the GBRMP. Significant penalties may apply for breaches. The symbol with the legend MR depicts the outer limit of all zones having higher restrictions than the General Use Zone. For details see Australian Seafarers Handbook AHP 20.

Note for chart Aus 244.

To accompany Australian Notice to Mariners 1261/2009

OMISSIONS FROM CHART

Certain information has been omitted from this chart. For details see the larger scale nautical charts and relevant nautical publications.

Note for chart Aus 245.

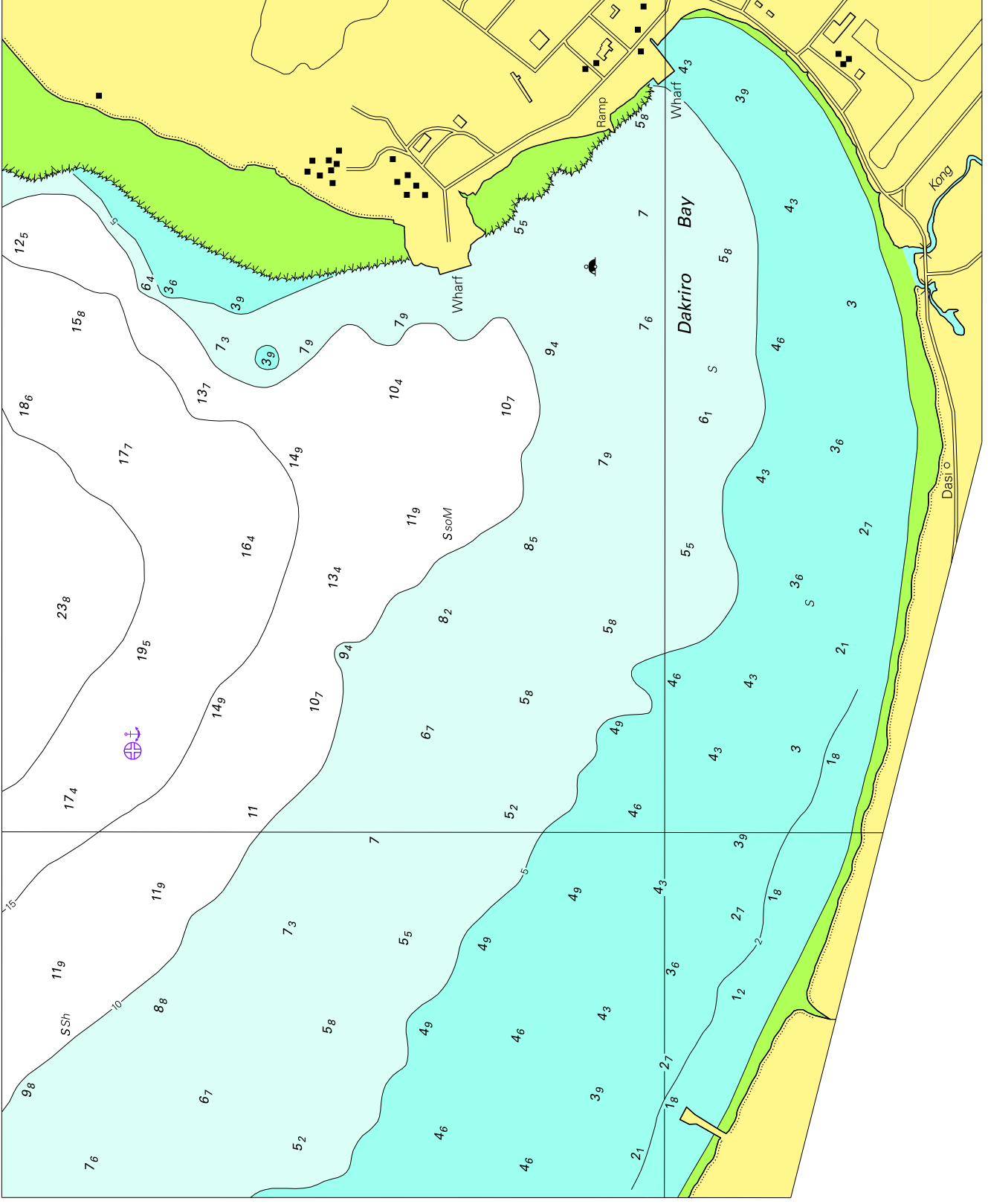
To accompany Australian Notice to Mariners 1261/2009

GREAT BARRIER REEF MARINE PARK
(GBRMP)

Areas of this chart are part of the GBRMP which is within an IMO approved Particularly Sensitive Sea Area (PSSA). Legislative restrictions apply to access, discharge of waste and other activities within the GBRMP. Significant penalties may apply for breaches. The symbol with the legend MR depicts the outer limit of all zones having higher restrictions than the General Use Zone. For details see Australian Seafarers Handbook AHP 20.

Note for chart Aus 245.

To accompany Australian Notice to Mariners 1267/2009

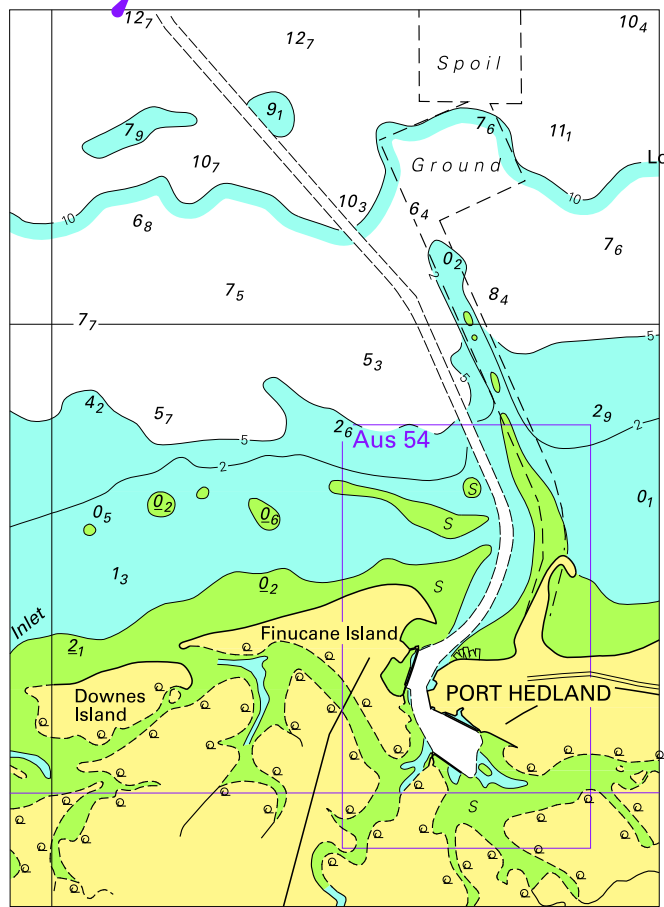


Block for chart Aus 652

© Commonwealth of Australia 2009

(213.3 x 174.4mm)

To accompany Australian Notice to Mariners 1270/2009

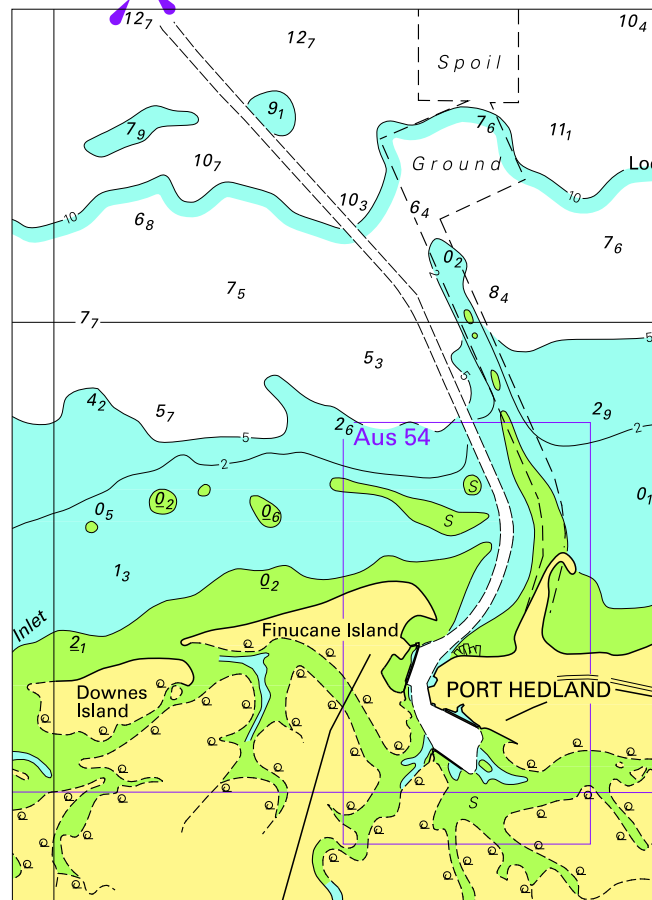


© Commonwealth of Australia 2009

Block for chart Aus 739

(85.9 x 118.6mm)

To accompany Australian Notice to Mariners 1270/2009



© Commonwealth of Australia 2009

Block for chart Aus 740

(85.5 x 118.1mm)