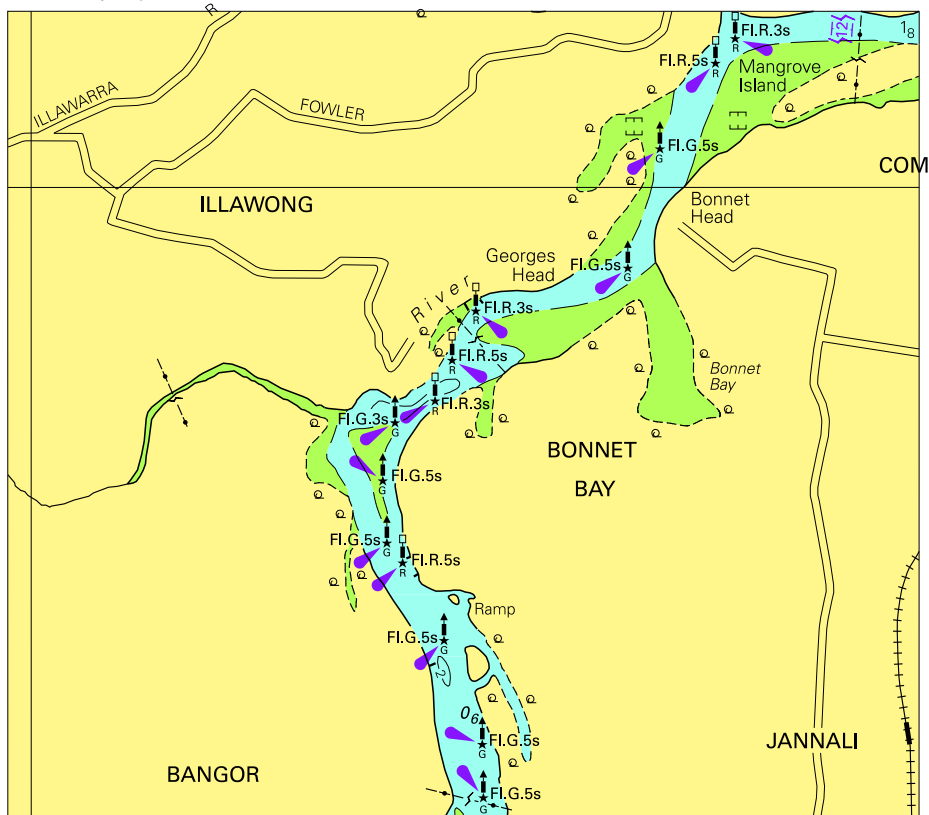


To accompany Australian Notice to Mariners 1210/2009

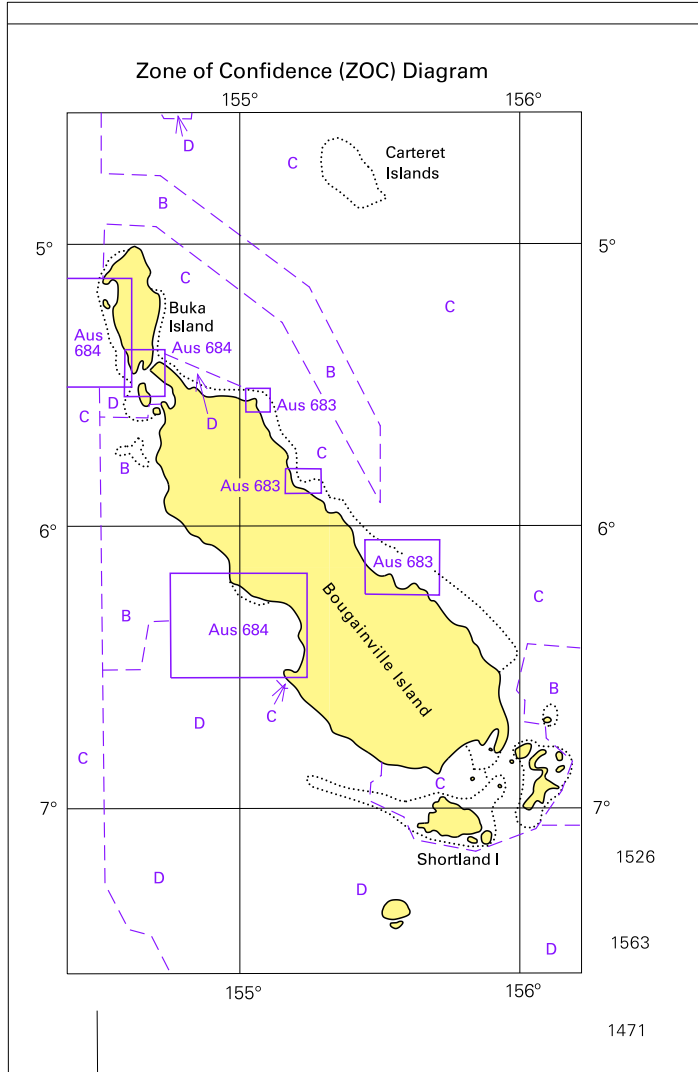


Block for chart Aus 198

© Commonwealth of Australia 2009

(120.5 x 106.5mm)

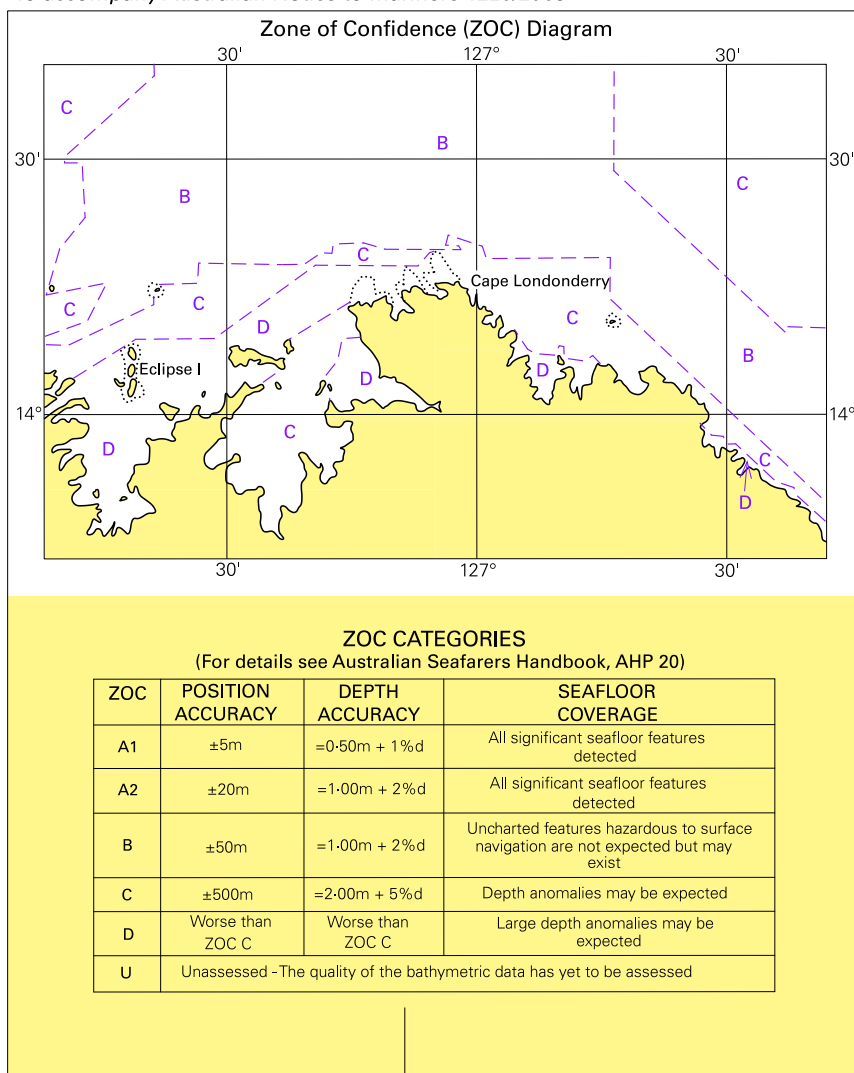
To accompany Australian Notice to Mariners 1219/2009



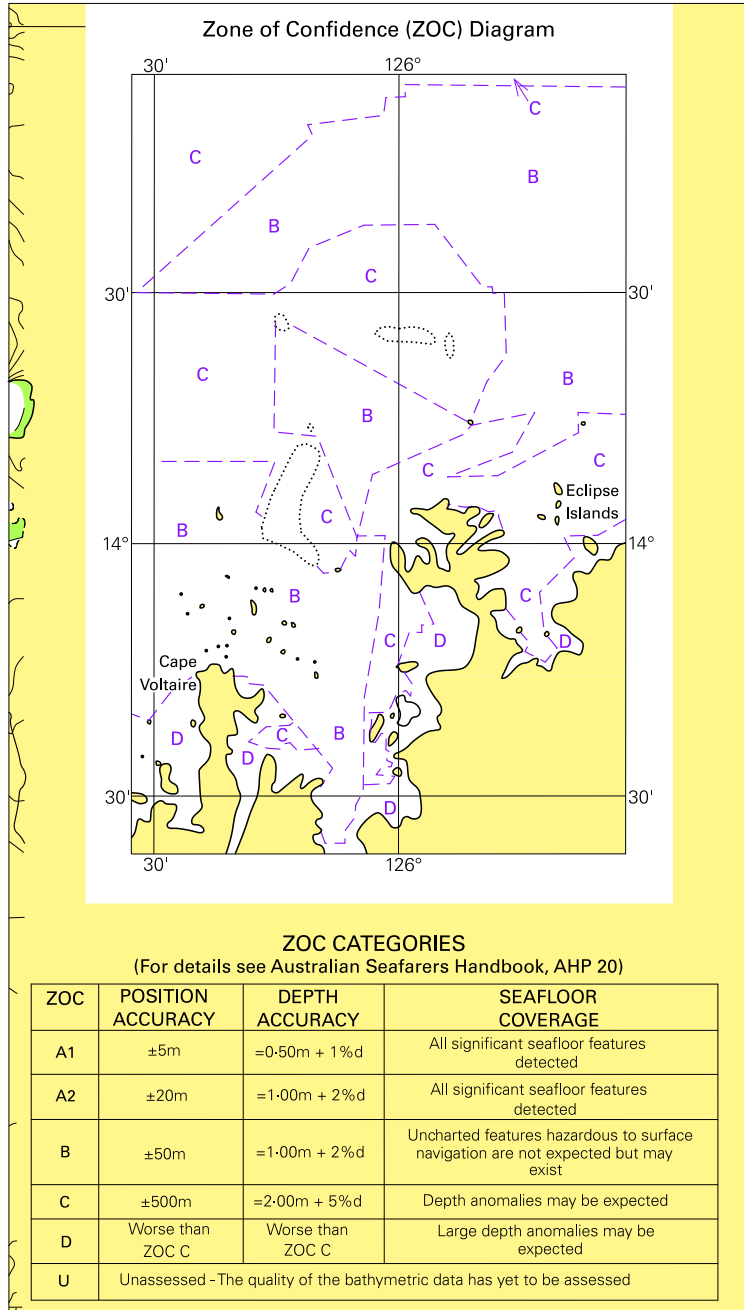
© Commonwealth of Australia 2009 (92.5 x 141.8mm)

Block for chart Aus 399

To accompany Australian Notice to Mariners 1220/2009



To accompany Australian Notice to Mariners 1221/2009

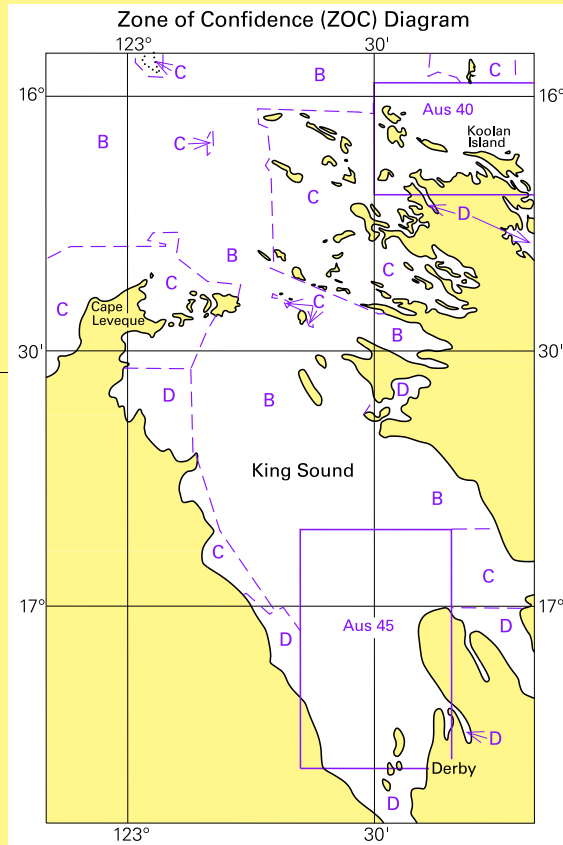


© Commonwealth of Australia 2009

(98.5 x 173.3mm)

Block for chart Aus 728

To accompany Australian Notice to Mariners 1222/2009



ZOC CATEGORIES

(For details see Australian Seafarers Handbook, AHP 20)

ZOC	POSITION ACCURACY	DEPTH ACCURACY	SEAFLOOR COVERAGE
A1	±5m	=0-50m + 1% d	All significant seafloor features detected
A2	±20m	=1-00m + 2% d	All significant seafloor features detected
B	±50m	=1-00m + 2% d	Uncharted features hazardous to surface navigation are not expected but may exist
C	±500m	=2-00m + 5% d	Depth anomalies may be expected
D	Worse than ZOC C	Worse than ZOC C	Large depth anomalies may be expected
U	Unassessed - The quality of the bathymetric data has yet to be assessed		

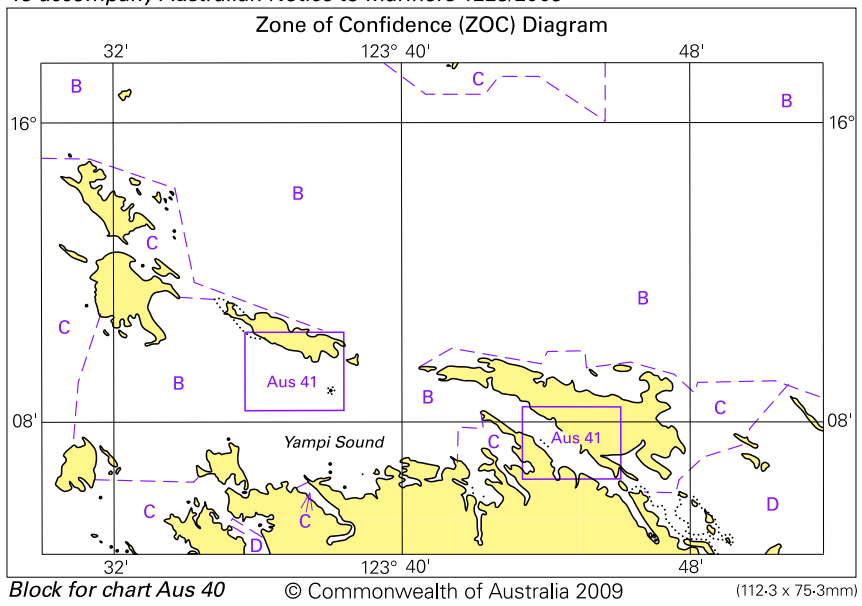
122°50'05"E
17°25'26"S

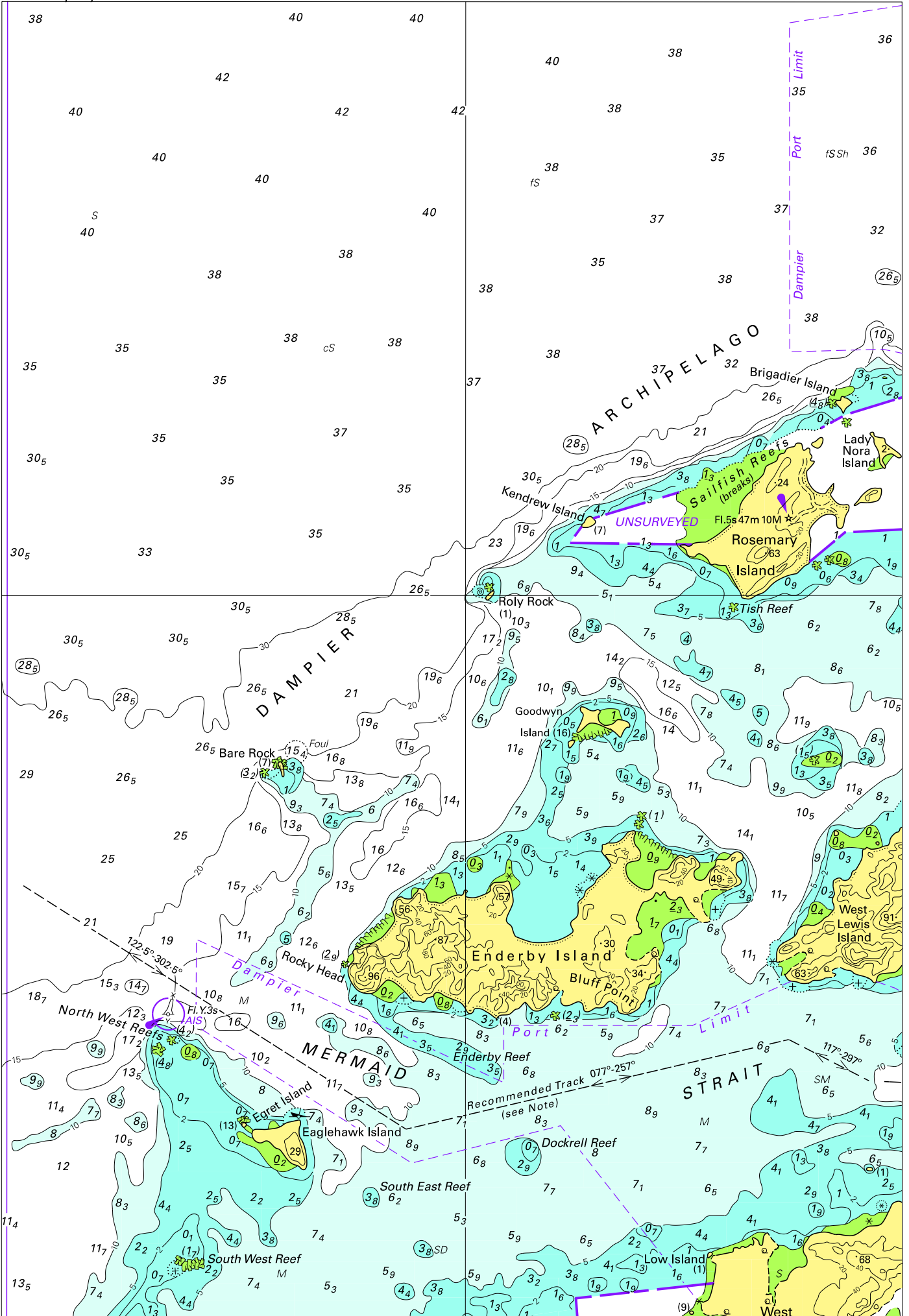
Block for chart Aus 733

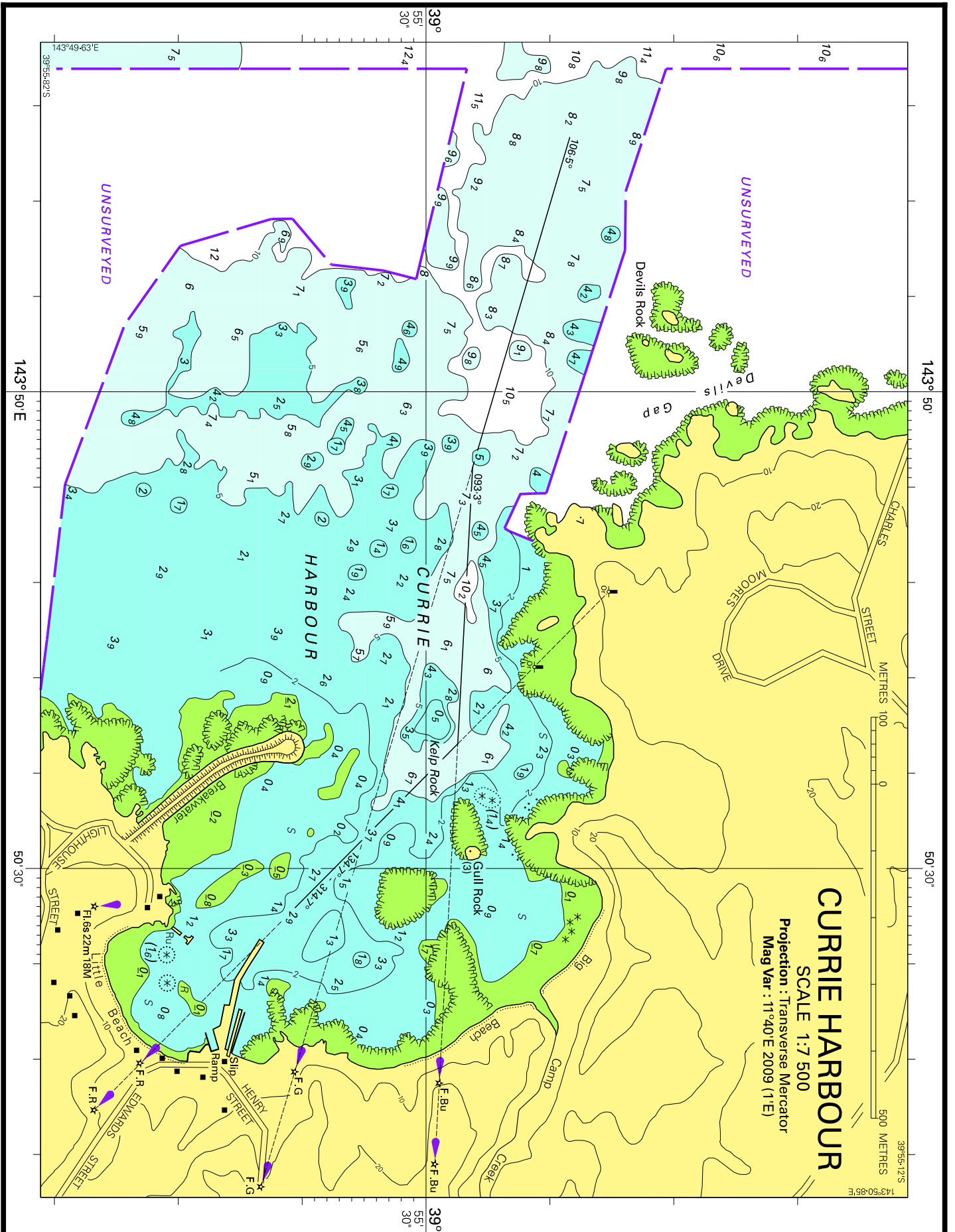
© Commonwealth of Australia 2009

(111-0 x 172-9mm)

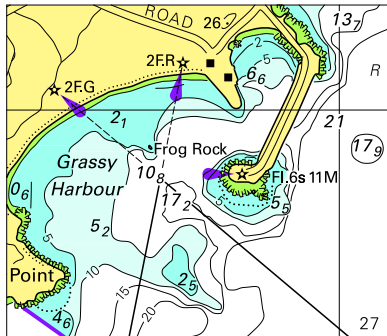
To accompany Australian Notice to Mariners 1223/2009







To accompany Australian Notice to Mariners 1229/2009



© Commonwealth of Australia 2009
Block for chart Aus 178 (50.7 x 43.9mm)