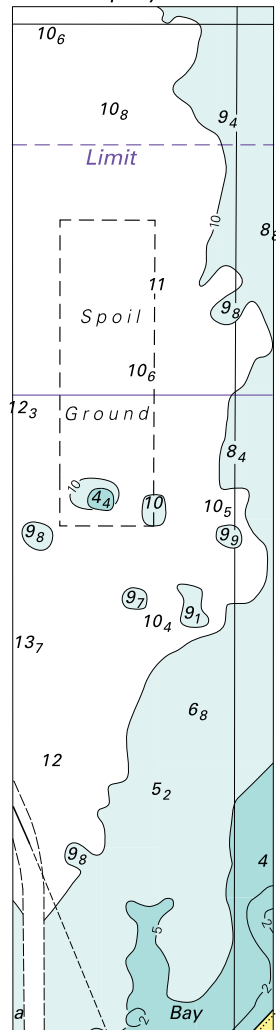
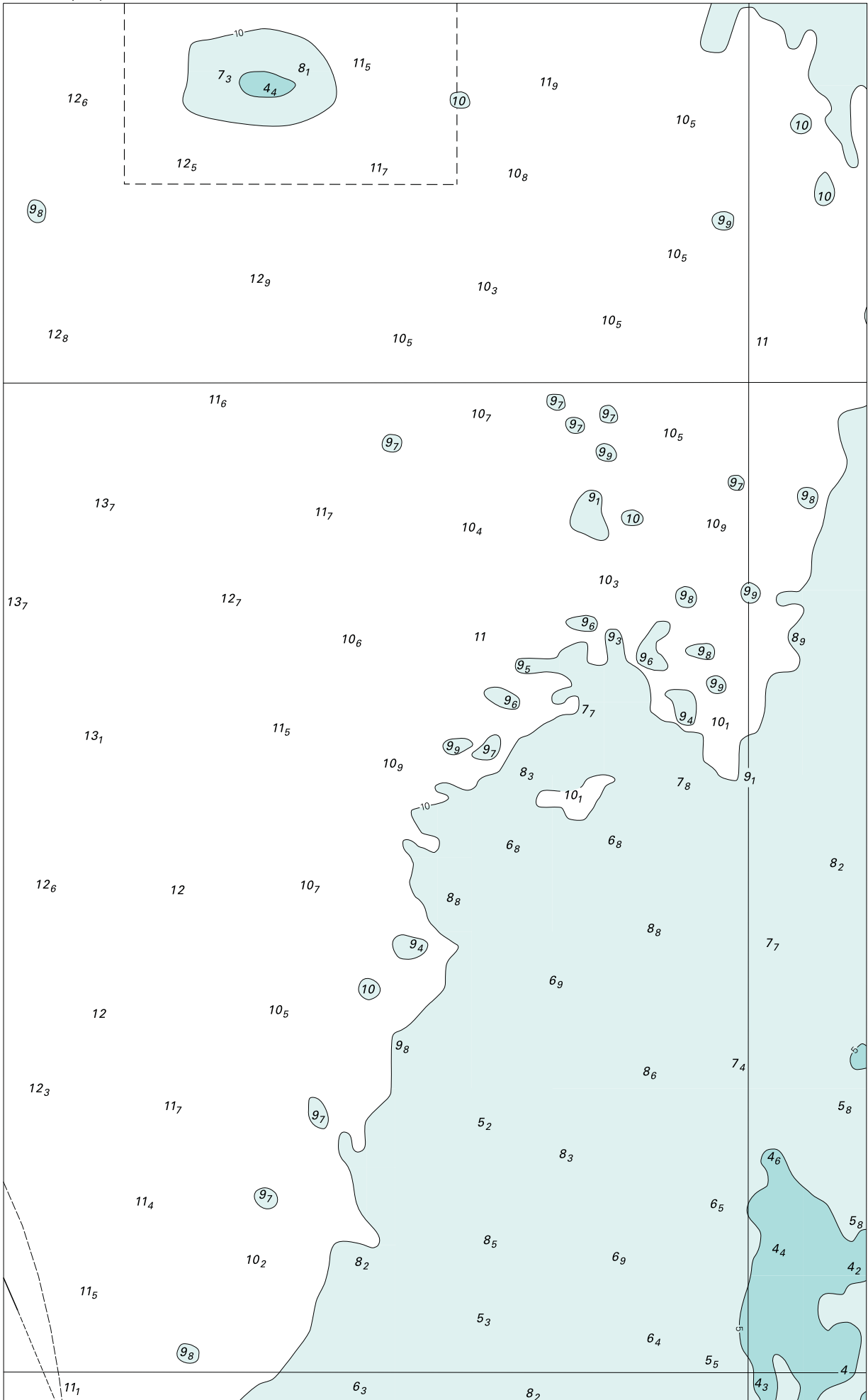


To accompany Australian Notice to Mariners 66/2009



© Commonwealth of Australia 2009
Block for chart Aus 115
(34.5 x 135.6mm)



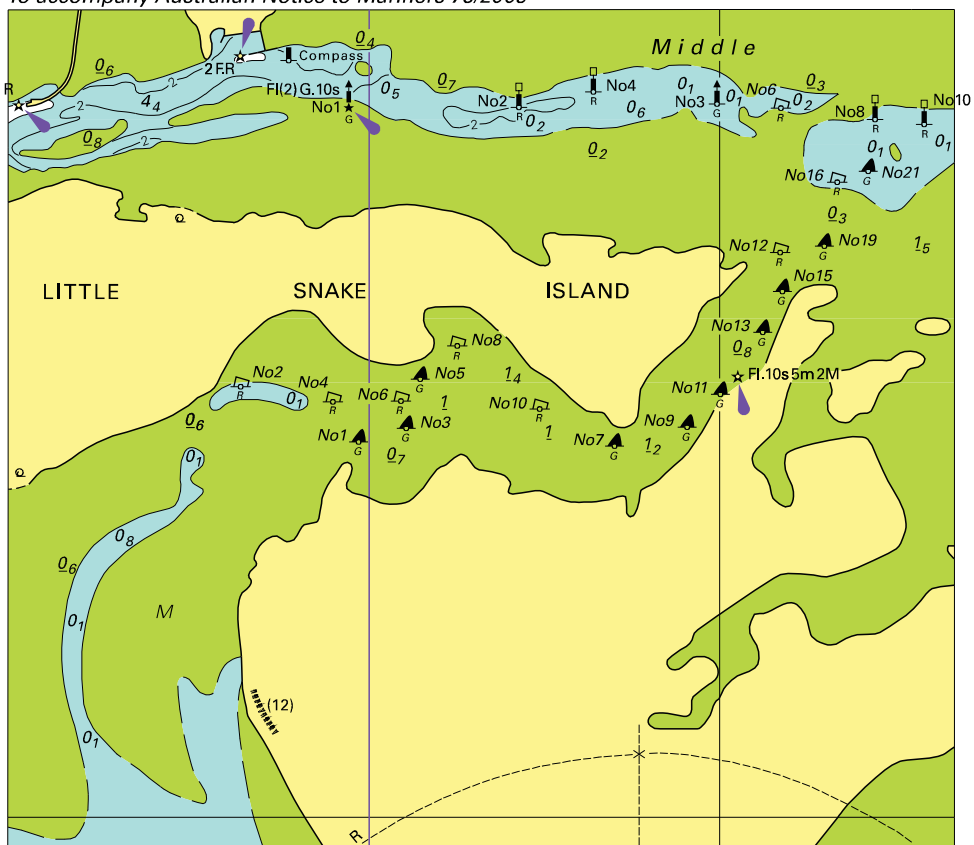
To accompany Australian Notice to Mariners 71/2009

Tidal Levels referred to Datum of Soundings								
Place	Lat S	Long E	Heights in metres above datum					
			HAT	MHHW	MLHW	MSL	MHLW	MLLW
Geelong	38° 09'	144° 22'	1·2	1·1	0·7	0·6	0·5	0·2

Block for chart Aus 153 © Commonwealth of Australia 2009

(107·9 x 37·6mm)

To accompany Australian Notice to Mariners 75/2009

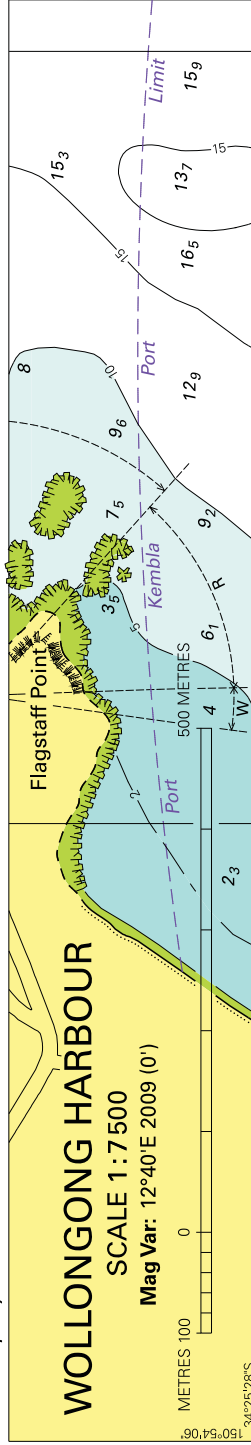


Block for chart Aus 181

© Commonwealth of Australia 2009

(125.2 x 110.6 mm)

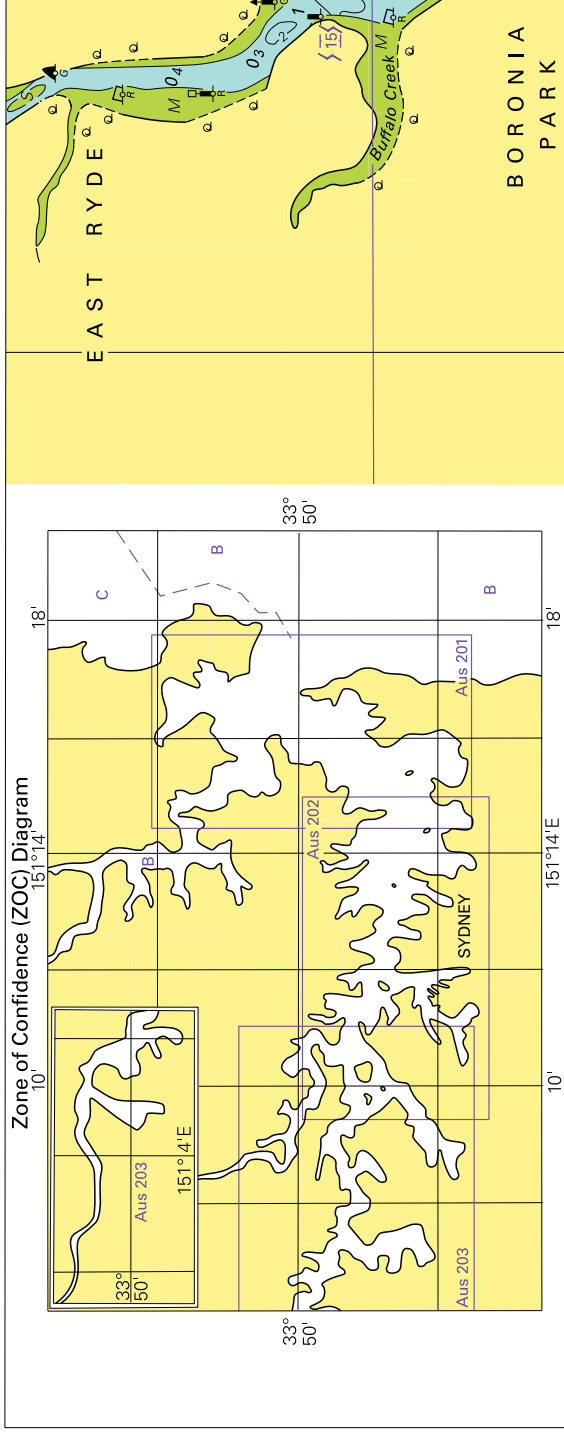
To accompany Australian Notice to Mariners 31/2009



Block for chart Aus194

© Commonwealth of Australia 2009

To accompany Australian Notice to Mariners 33/2009



ZOC CATEGORIES

(For details see Australian Seafarers Handbook, AHP 20)

ZOC	POSITION ACCURACY	DEPTH ACCURACY	SEAFLOOR COVERAGE
A1	±5m	=0.50m + 1% <i>d</i>	All significant seafloor features detected
A2	±20m	=1.00m + 2% <i>d</i>	All significant seafloor features detected
B	±50m	=1.00m + 2% <i>d</i>	Uncharted features hazardous to surface navigation are not expected but may exist
C	±500m	=2.00m + 5% <i>d</i>	Depth anomalies may be expected
D	Worse than ZOC C	Worse than ZOC C	Large depth anomalies may be expected
U	Unassessed	The quality of the bathymetric data has yet to be assessed	

Block for chart Aus 200

© Commonwealth of Australia 2009

(189.3 x 147.3mm)

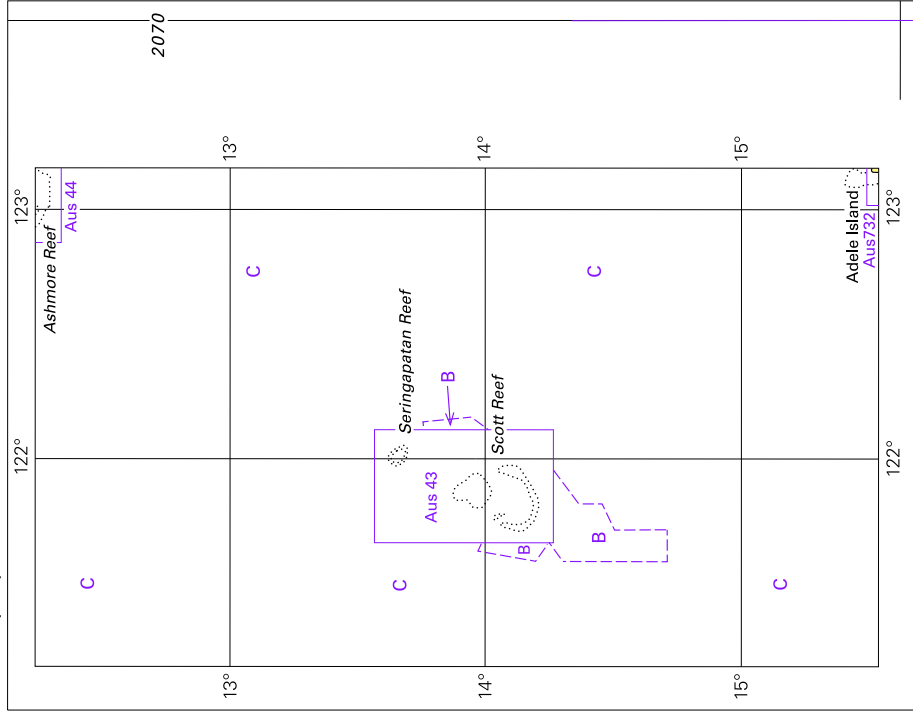
To accompany Australian Notice to Mariners 36/2009

MARINE FARMS

Marine farms, which may be floating or fixed structures and their associated moorings should be avoided. The farms are generally marked by buoys or beacons, which may be lit. Their charted positions are approximate.

Note for chart Aus 209

To accompany Australian Notice to Mariners 55/2009

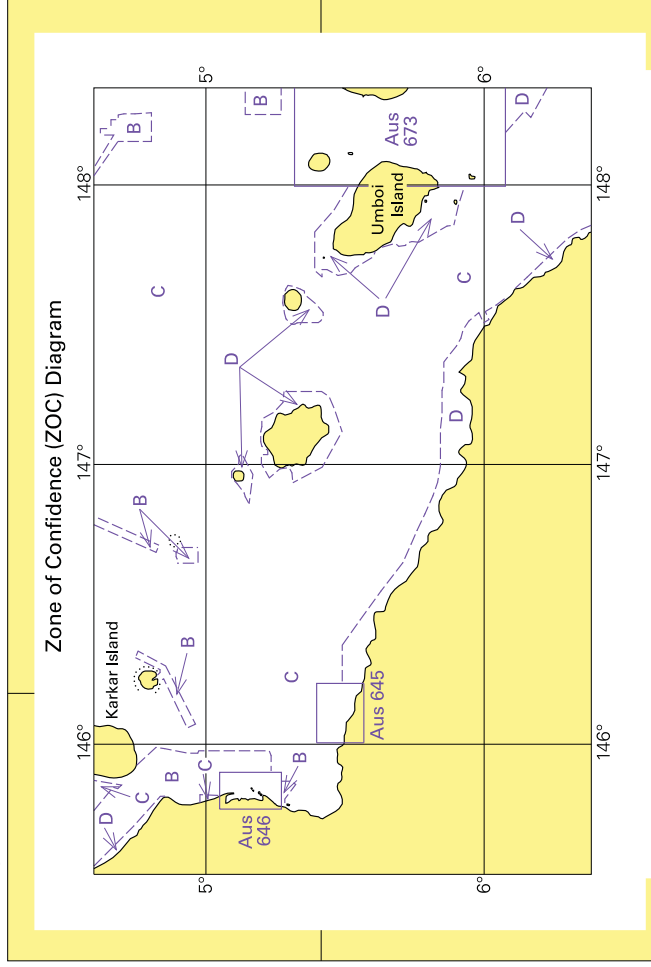


© Commonwealth of Australia 2009

Block for chart Aus 322

(93.8mm x 120.4mm)

To accompany Australian Notice to Mariners 48/2009

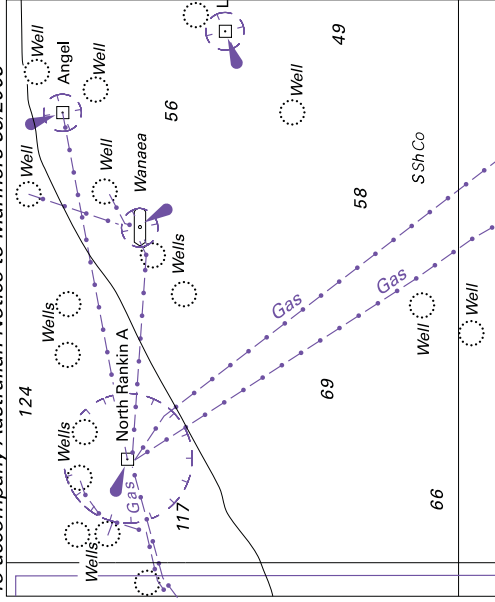


Block for chart Aus 387

© Commonwealth of Australia 2009

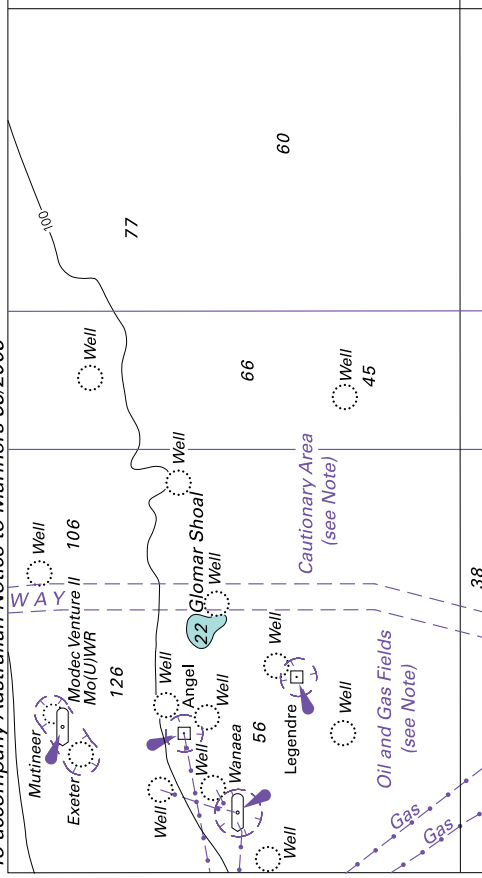
(127.5 x 85.8 mm)

To accompany Australian Notice to Mariners 59/2009



© Commonwealth of Australia 2009
(78.9 x 65.5mm)
Block for chart Aus 415

To accompany Australian Notice to Mariners 59/2009



Block for chart Aus 4722

© Commonwealth of Australia 2009

(115.6 x 63.5mm)

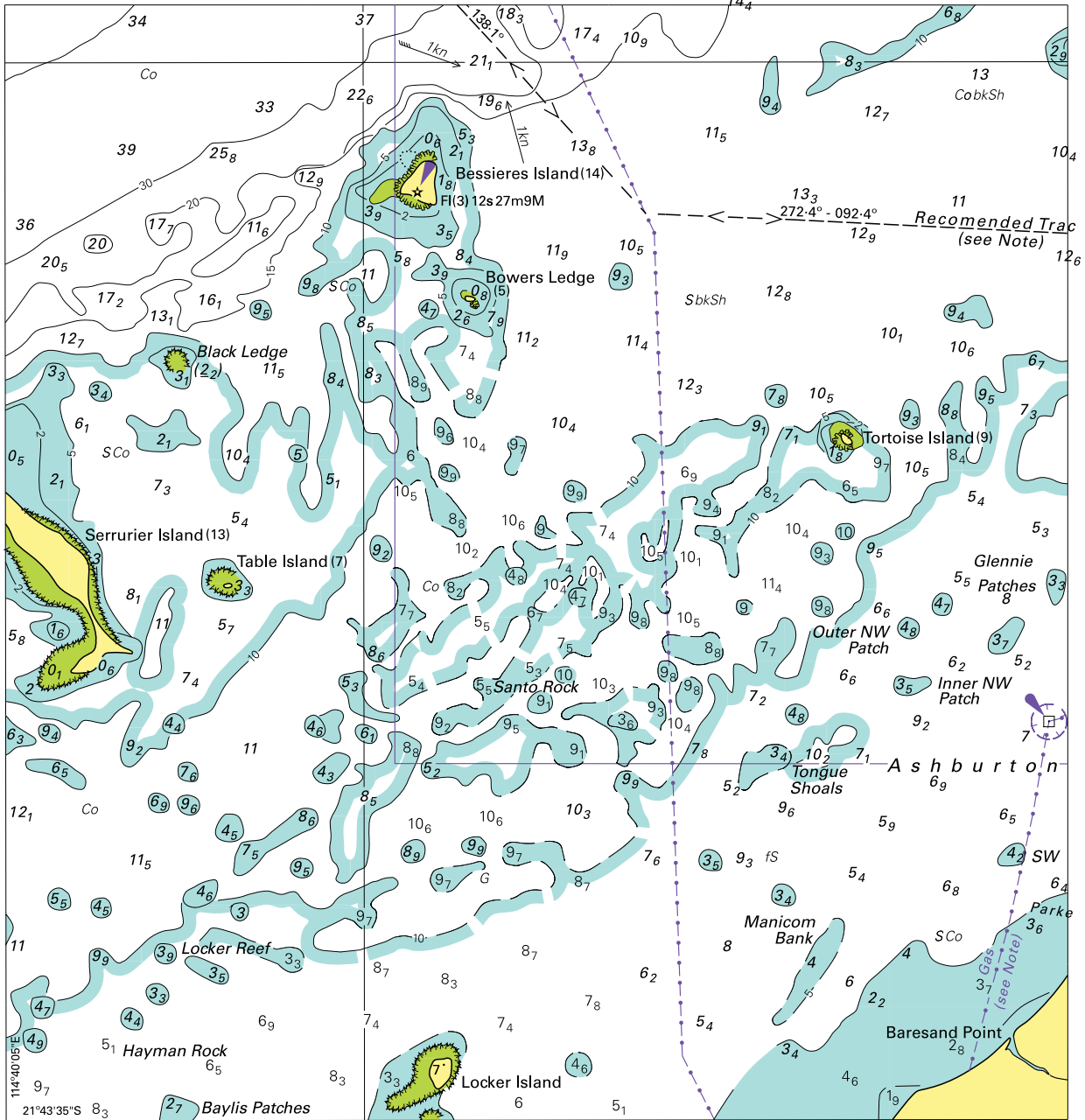
To accompany Australian Notice to Mariners 44/2009

OIL AND GAS PIPELINES

Pipelines carry flammable oil or gas at high pressure. A damaged pipeline could cause an explosion, resulting in damage to a vessel or the environment. Pipelines may pass over bottom undulations, be buried or protrude above the seabed reducing charted depths. Vessels should avoid anchoring, trawling or conducting other underwater operations in the vicinity of the pipelines.

Note for chart Aus 502

To accompany Australian Notice to Mariners 60/2009



Block for chart Aus 743

© Commonwealth of Australia 2009

(160.4 x 168.5mm)

To accompany Australian Notice to Mariners 34/2009

TIDAL STREAMS AND CURRENTS

For information on tidal streams and currents
see Australia Pilot Vol III NP 15.

Note for chart Aus 809

To accompany Australian Notice to Mariners 36/2009

MARINE FARMS

Marine farms, which may be floating or fixed structures and their associated moorings should be avoided. The farms are generally marked by buoys or beacons, which may be lit. Their charted positions are approximate.

Note for chart Aus 809

To accompany Australian Notice to Mariners 36/2009

AUSTRALIAN MARITIME JURISDICTION (AMJ)

The territorial sea baseline and the outer limit of Australian maritime zones shown on this chart are sourced from the Geoscience Australia product Australian Maritime Boundaries (AMB). For Australian maritime boundary information see Australian Seafarers Handbook AHP 20.

Note for chart Aus 809

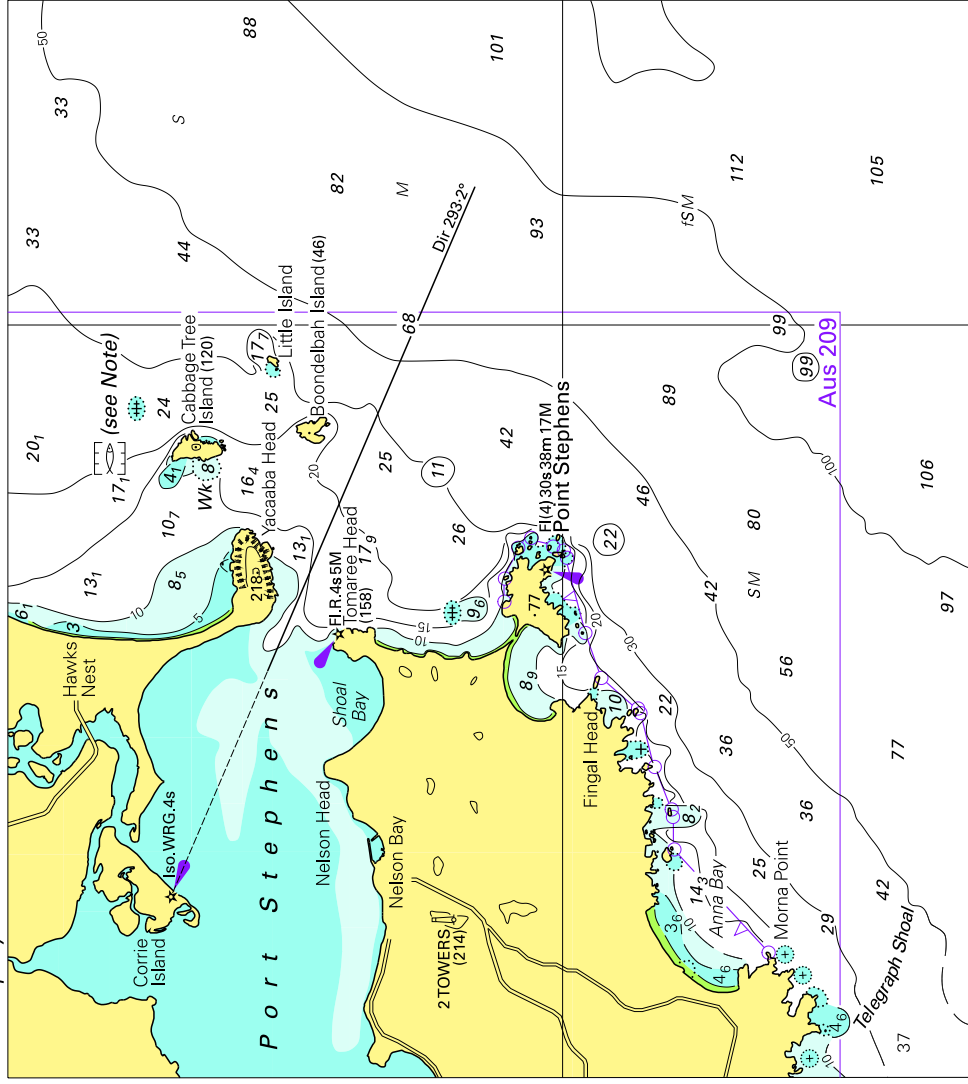
To accompany Australian Notice to Mariners 34/2009

TIDAL STREAMS AND CURRENTS

For information on tidal streams and currents
see Australia Pilot Vol III NP 15.

Note for chart Aus 810

To accompany Australian Notice to Mariners 36/2009



Block for chart Aus 810

© Commonwealth of Australia 2009

(142.5mm x 127.4mm)

To accompany Australian Notice to Mariners 36/2009

MARINE FARMS

Marine farms, which may be floating or fixed structures and their associated moorings should be avoided. The farms are generally marked by buoys or beacons, which may be lit. Their charted positions are approximate.

Note for chart Aus 810

To accompany Australian Notice to Mariners 34/2009

TIDAL STREAMS AND CURRENTS

For information on tidal streams and currents
see Australia Pilot Vol III NP 15.

Note for chart Aus 811

To accompany Australian Notice to Mariners 34/2009

TIDAL STREAMS AND CURRENTS

For information on tidal streams and currents
see Australia Pilot Vol III NP 15.

Note for chart AX 0809E

To accompany Australian Notice to Mariners 36/2009

AUSTRALIAN MARITIME JURISDICTION (AMJ)

The territorial sea baseline and the outer limit of Australian maritime zones shown on this chart are sourced from the Geoscience Australia product Australian Maritime Boundaries (AMB). For Australian maritime boundary information see Australian Seafarers Handbook AHP 20.

Note for chart AX 0809E