

*To accompany Australian Notice to Mariners 1104/2009*

ROCK LOBSTER FISHERY

Between November and June, extensive lobster fishing takes place on the continental shelf between the latitudes 24° S and 34° S. When passage permits, mariners are requested to transit outside the 200 metre contour.

*Note for chart Aus 752.*

*To accompany Australian Notice to Mariners 1105/2009*

TIDAL STREAMS AND CURRENTS

For information on tidal streams and currents see Australia Pilot Vol I NP 13.

*Note for chart Aus 112.*

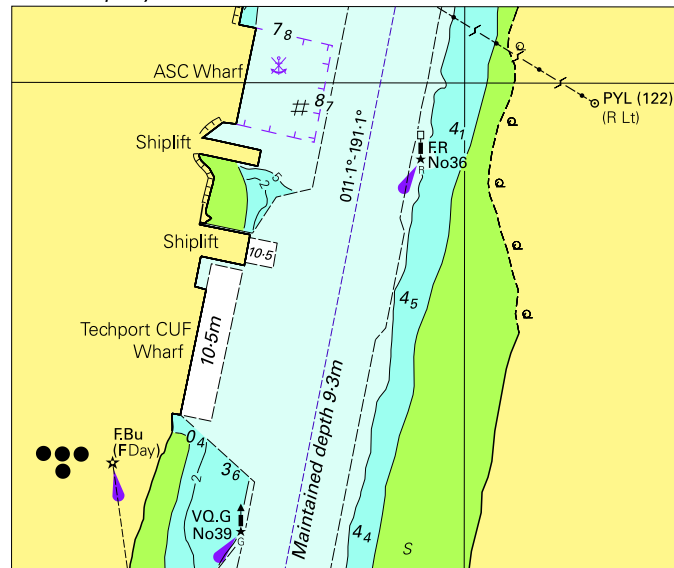
*To accompany Australian Notice to Mariners 1105/2009*

TIDAL STREAMS AND CURRENTS

For information on tidal streams and currents see Australia Pilot Vol I NP 13.

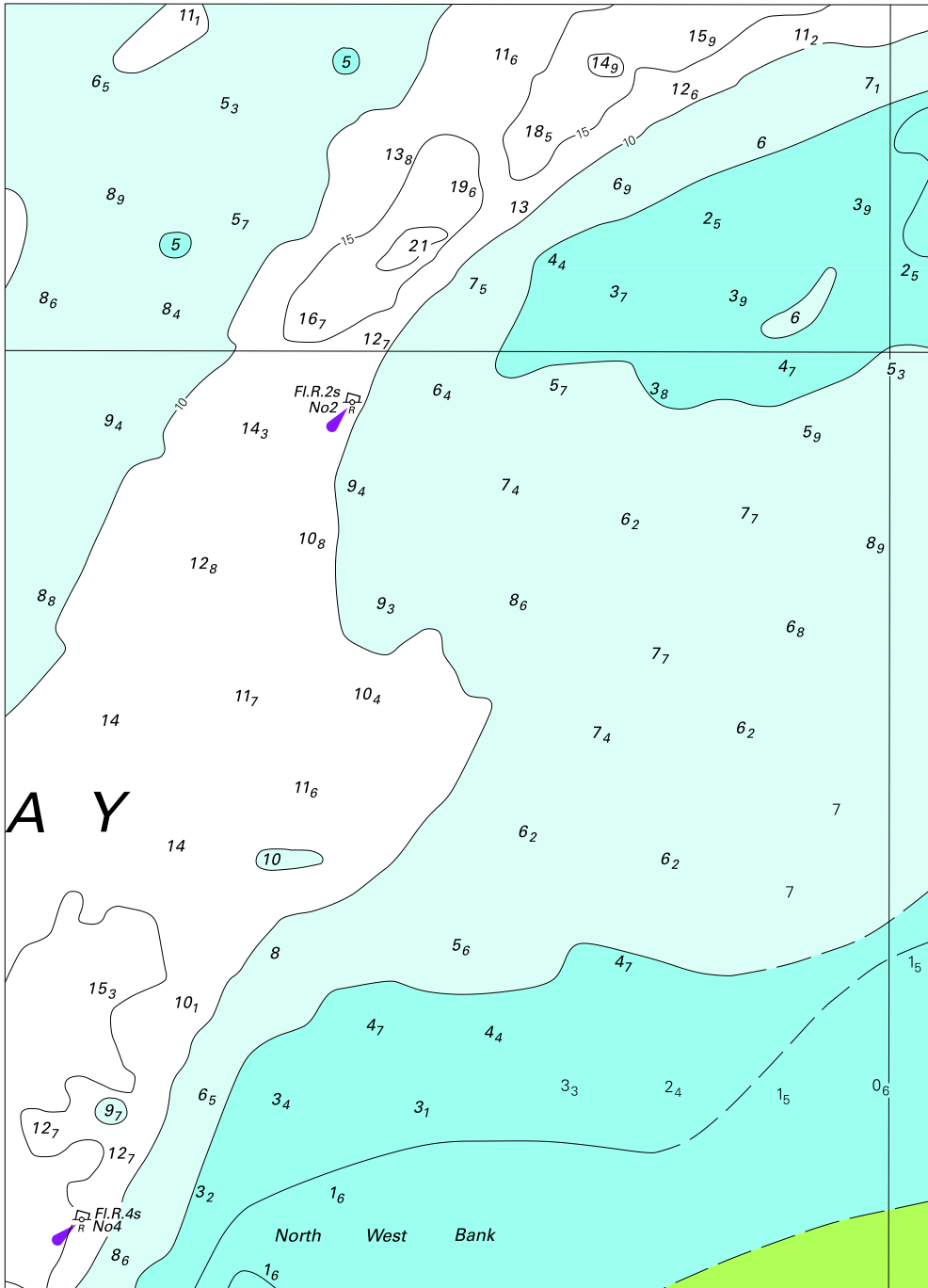
*Note for chart AX 63112.*

To accompany Australian Notices to Mariners 1109/2009



Block for Aus 137 © Commonwealth of Australia 2009 (88.5 x 74.4mm)

To accompany Australian Notice to Mariners 1093/2009



Block for chart Aus 265

© Commonwealth of Australia 2009

(130.0 x 180.6mm)