

*To accompany Australian Notice to Mariners 1051/2009*

OMISSIONS FROM CHART

Certain information has been omitted from this chart. For details see the larger scale nautical charts and relevant nautical publications.

*Note for chart Aus 303.*

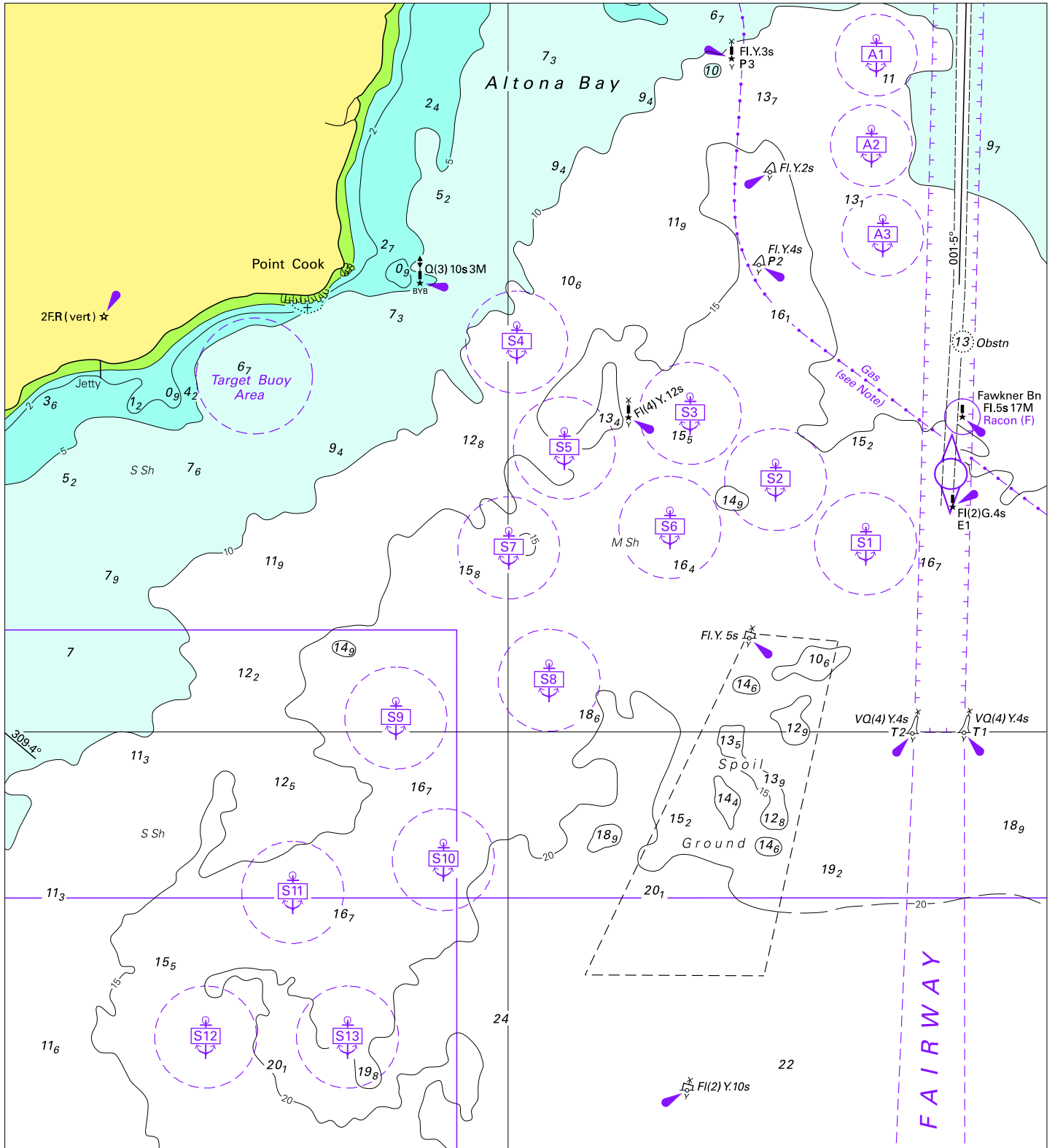
*To accompany Australian Notice to Mariners 1054/2009*

PILOTAGE

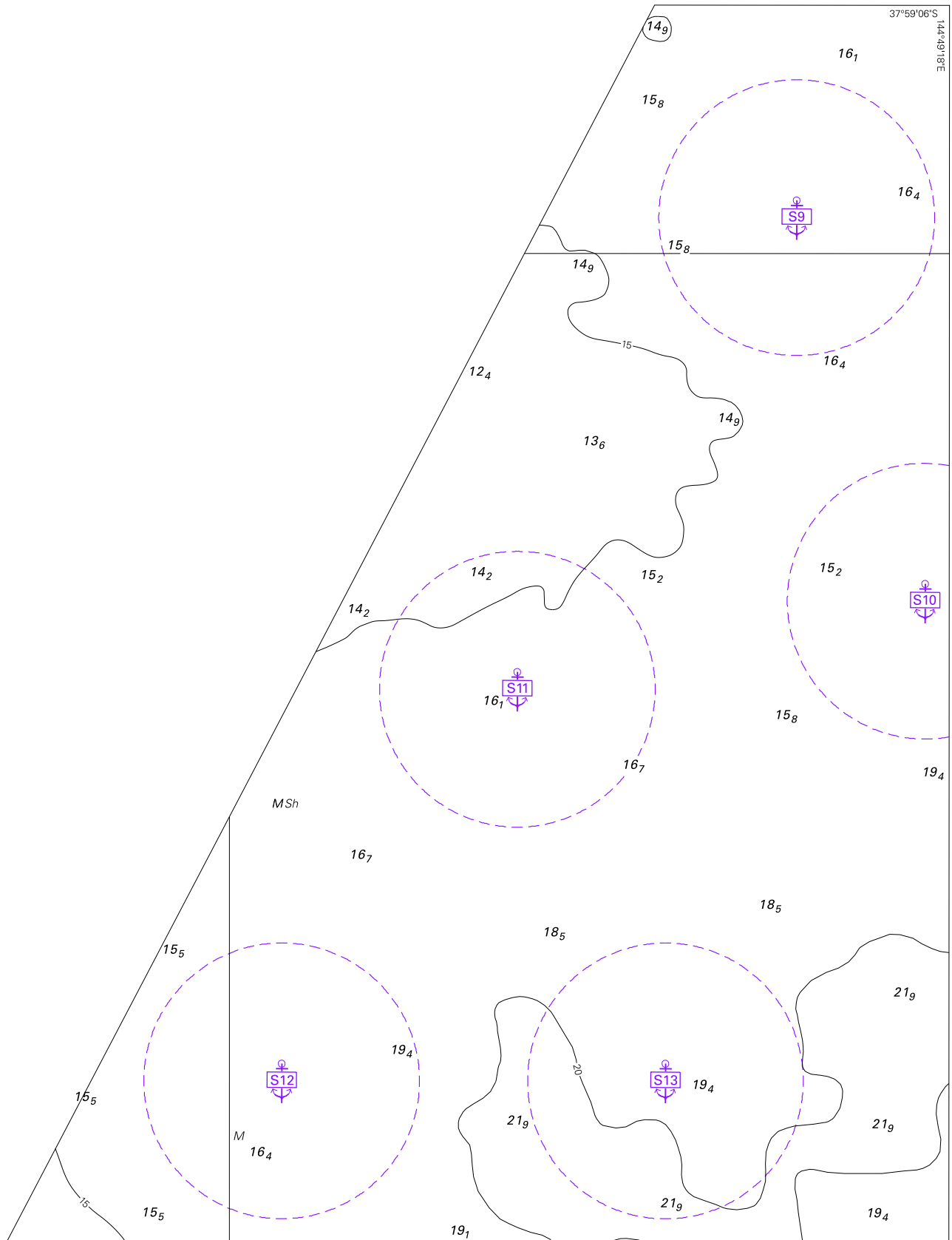
Entry into Port Walcott is via the 194°/256° tracks to 20° 32'.1 S 117° 17'.7 E; from this position to the berth pilotage is compulsory. The buoyed channel is for departure only and pilotage is compulsory to the port limit and for deep draught vessels needing to transit the Outer North Channel. Inbound vessels should not impede outbound vessels constrained by their draught or restricted in their ability to manoeuvre. All vessels maintain listening watch VHF Ch 14 and 16.

*Note for chart Aus 55.*

To accompany Australain Notice to Mariners 1065/2009



To accompany Australian Notice to Mariners 1065/2009



Block for chart Aus 157

© Commonwealth of Australia 2009

(168.6 x 221.2mm)