

To accompany Australian Notice to Mariners 870/2009

HISTORIC WRECK

The site of an historic wreck is protected from unauthorised interference. For details see Australian Seafarers Handbook AHP 20.

Note for chart Aus 326.

To accompany Australian Notice to Mariners 870/2009

HISTORIC WRECK

The site of an historic wreck is protected from unauthorised interference. For details see Australian Seafarers Handbook AHP 20.

Note for chart Aus 740.

To accompany Australian Notice to Mariners 874/2009

HISTORIC WRECK

The site of an historic wreck is protected from unauthorised interference. For details see Australian Seafarers Handbook AHP 20.

Note for chart Aus 109.

To accompany Australian Notice to Mariners 874/2009

HISTORIC WRECK

The site of an historic wreck is protected from unauthorised interference. For details see Australian Seafarers Handbook AHP 20.

Note for chart Aus 118.

To accompany Australian Notice to Mariners 875/2009

HISTORIC WRECK

The site of an historic wreck is protected from unauthorised interference. For details see Australian Seafarers Handbook AHP 20.

Note for chart Aus 119.

To accompany Australian Notice to Mariners 878/2009

CHANNEL ESCAPE AREA

Mariners are advised that large vessels underway may make bold alterations of course and/or speed in this area and as such caution is to be exercised when navigating in these areas.

Note for chart Aus 172.

To accompany Australian Notice to Mariners 879/2009

CHANNEL ESCAPE AREA

Mariners are advised that large vessels underway may make bold alterations of course and/or speed in this area and as such caution is to be exercised when navigating in these areas.

Note for chart Aus 167.

To accompany Australian Notice to Mariners 880/2009

CHANNEL ESCAPE AREA

Mariners are advised that large vessels underway may make bold alterations of course and/or speed in this area and as such caution is to be exercised when navigating in these areas.

Note for chart Aus 164.

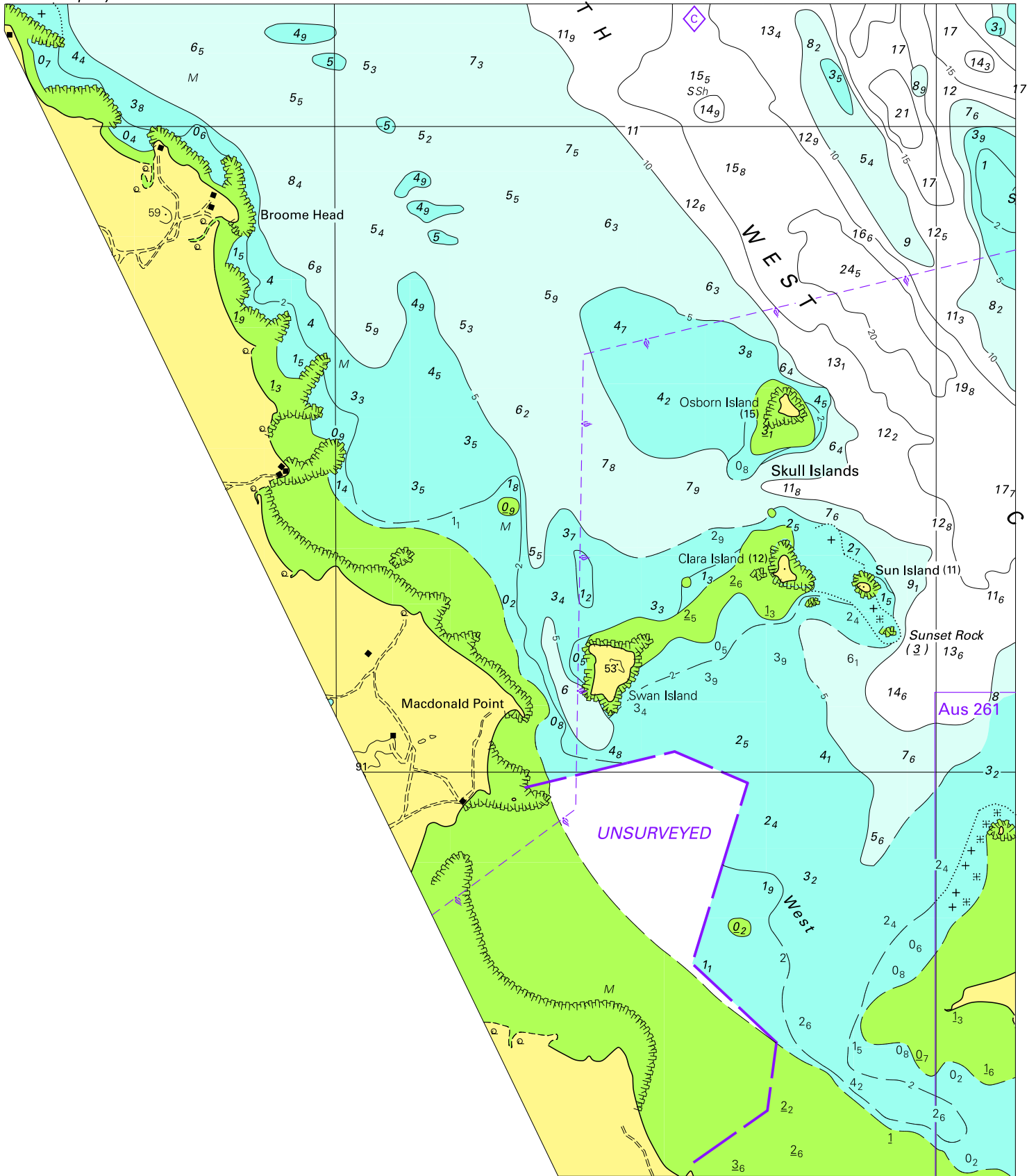
To accompany Australian Notice to Mariners 881/2009

CHANNEL ESCAPE AREA

Mariners are advised that large vessels underway may make bold alterations of course and/or speed in this area and as such caution is to be exercised when navigating in these areas.

Note for chart Aus 163.

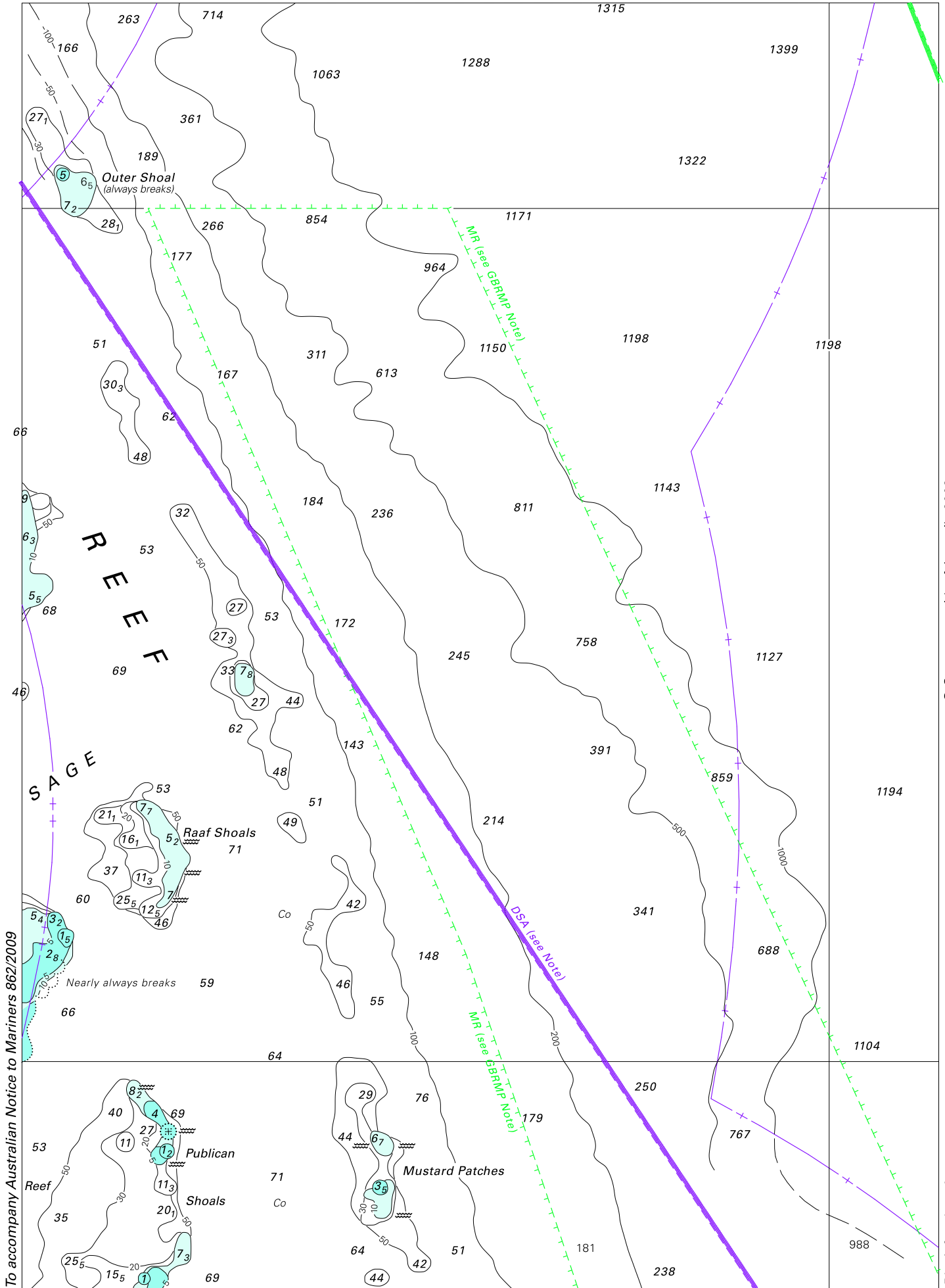
To accompany Australian Notice to Mariners 861/2009



Block for chart Aus 260

© Commonwealth of Australia 2009

(192.5 x 223.3mm)



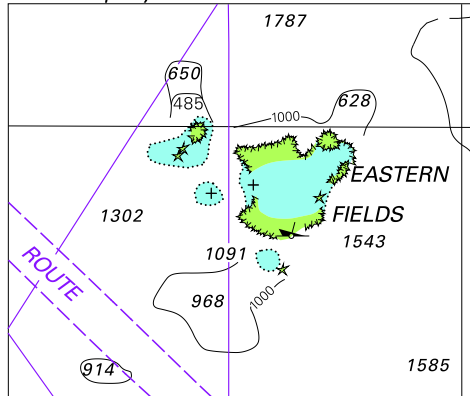
To accompany Australian Notice to Mariners 862/2009

(184.5 x 258.8mm)

© Commonwealth of Australia 2009

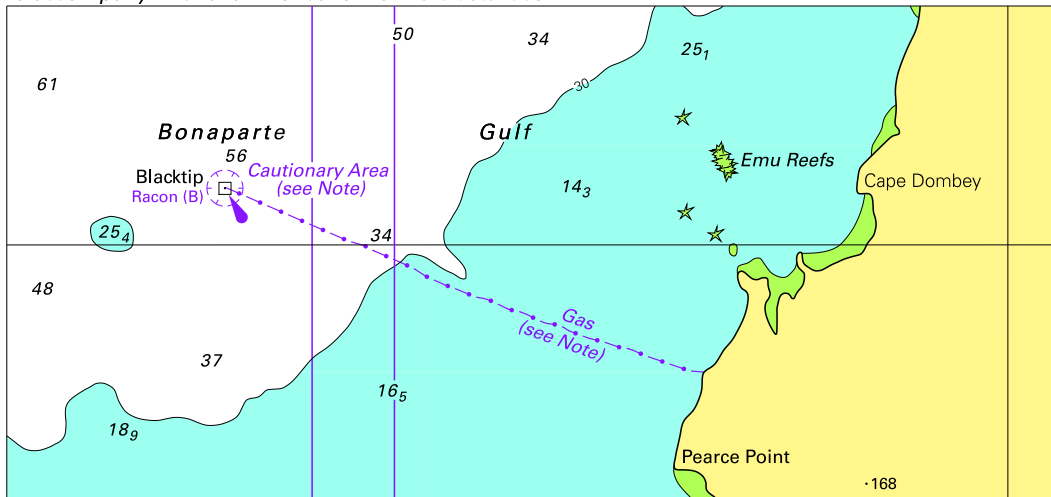
Block for chart Aus 830

To accompany Australian Notice to Mariners 864/2009



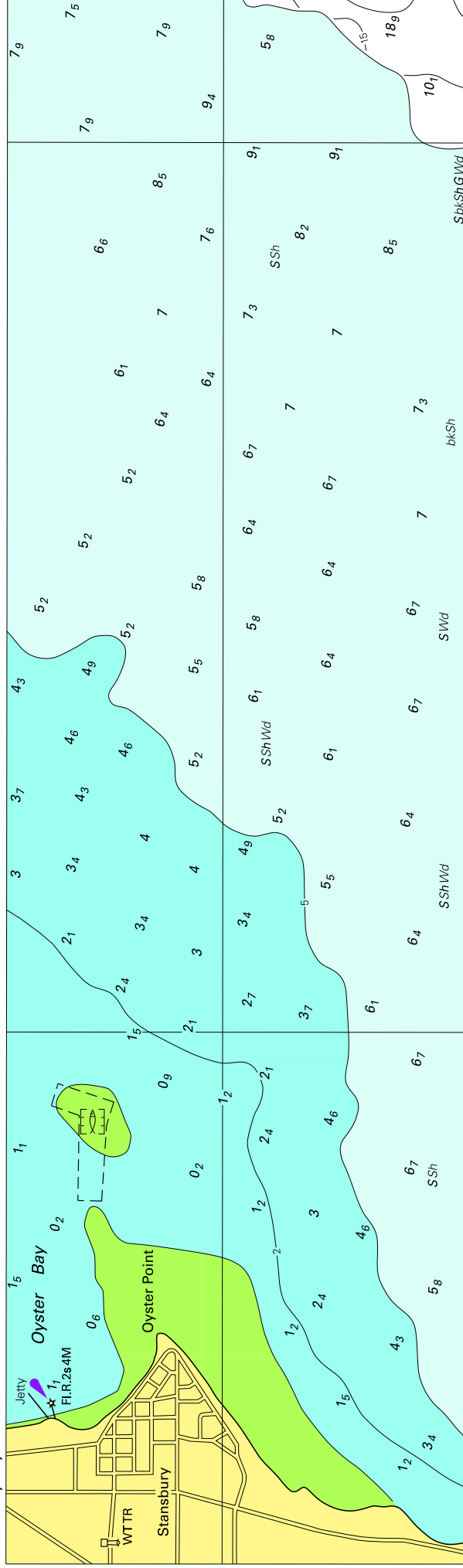
© Commonwealth of Australia 2009
Block for chart aus 4620 (63.6 X 52.1mm)

To accompany Australian Notice to Mariners 868/2009



Block for chart Aus 4721 © Commonwealth of Australia 2009 (138.9 x 65.2mm)

To accompany Australian Notice to Mariners 877/2009

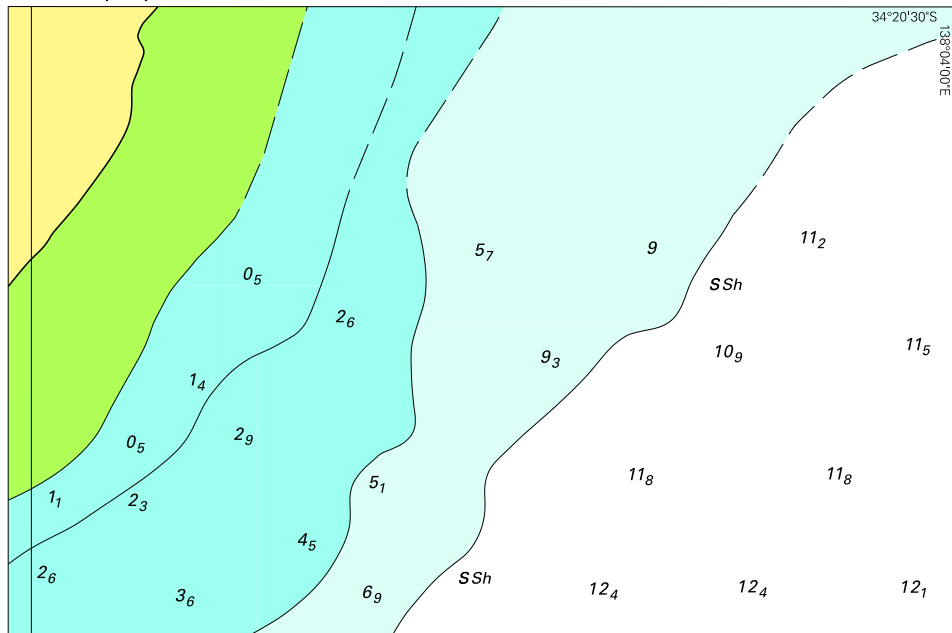


Block for chart Aus 139

© Commonwealth of Australia 2009

(267.8 x 78.6nm)

To accompany Australian Notice to Mariners 877/2009

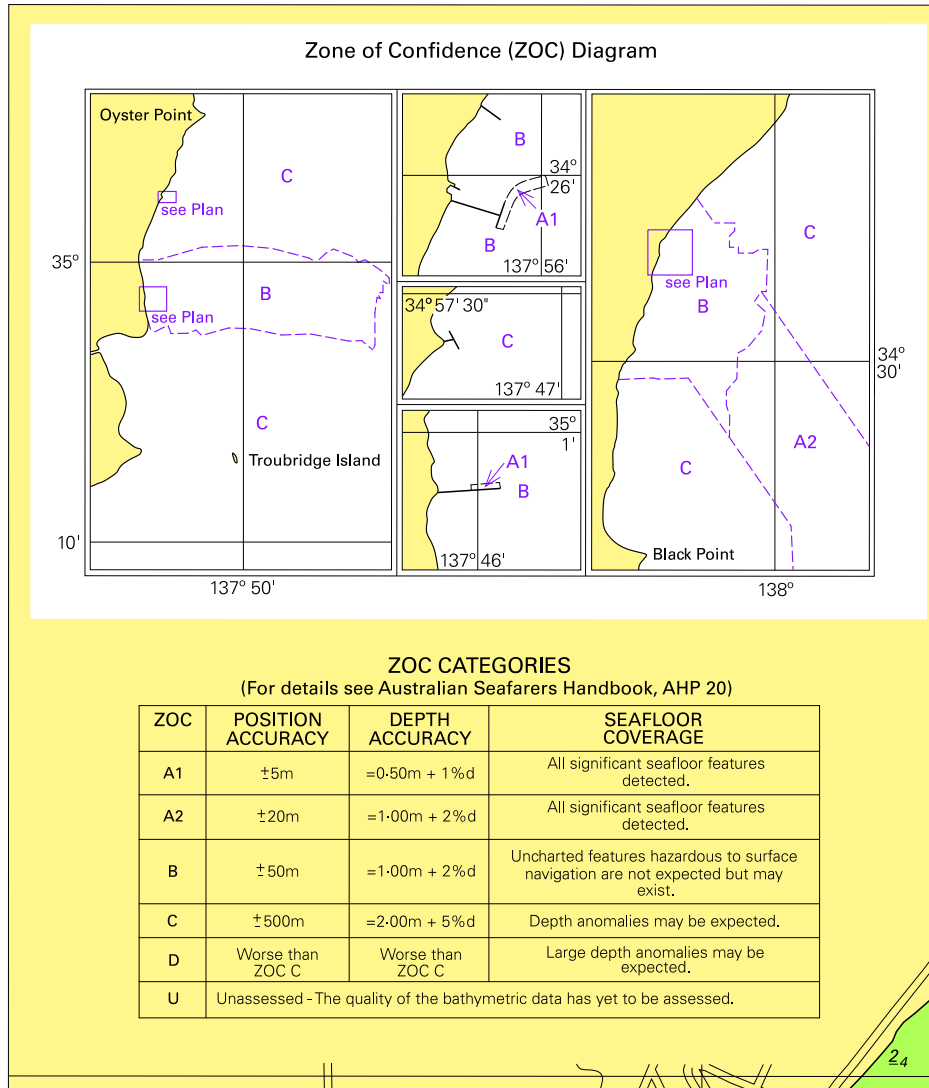


Block for chart Aus 139

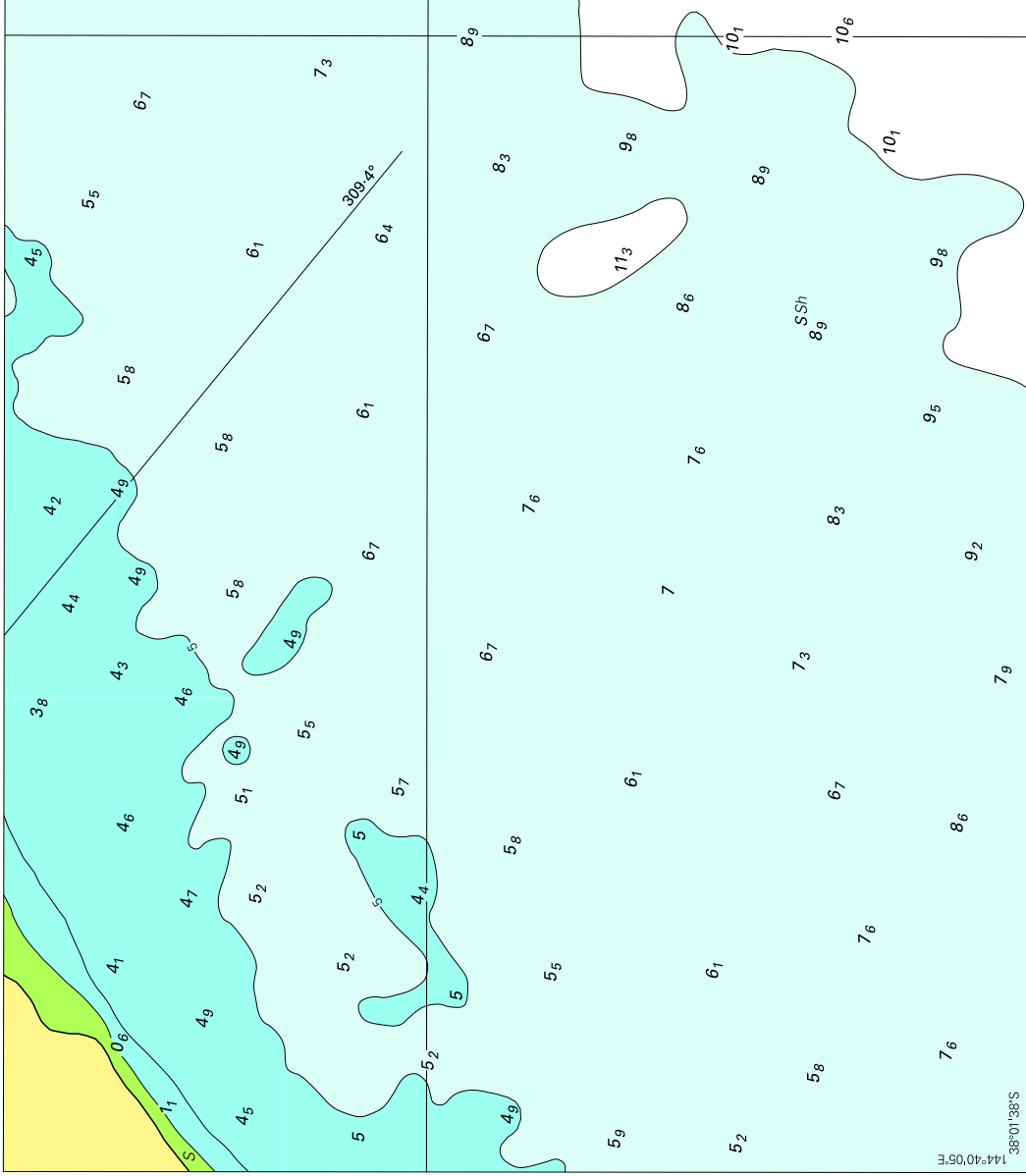
© Commonwealth of Australia 2009

(125.6 x 83.2mm)

To accompany Australian Notice to Mariners 877/2009



To accompany Australian Notice to Mariners 882/2009



(158.2 x 137.9mm)

© Commonwealth of Australia 2009

Block for chart Aus 155