

To accompany Australian Notice to Mariners 809/2009

ENVIRONMENTALLY SENSITIVE SEA
AREA (ESSA)

Areas of this chart are Environmentally Sensitive Sea Areas (ESSA). Areas within this marine protected area have restrictions on access and activities. See Australian Seafarers Handbook AHP 20.

Note for chart Aus 811

To accompany Australian Notice to Mariners 826/2009

CAUTIONARY AREA

Vessels are to avoid navigating, anchoring or fishing within this area.

Note for chart Aus 316 .

To accompany Australian Notice to Mariners 826/2009

OIL AND GAS PIPELINES

Pipelines carry flammable oil or gas at high pressure. A damaged pipeline could cause an explosion, resulting in damage to a vessel or the environment. Pipelines may pass over bottom undulations, be buried or protrude above the seabed reducing charted depths. Vessels should avoid anchoring, trawling or conducting other underwater operations in the vicinity of the pipelines.

Note for chart Aus 316

To accompany Australian Notice to Mariners 826/2009

OIL AND GAS PIPELINES

Pipelines carry flammable oil or gas at high pressure. A damaged pipeline could cause an explosion, resulting in damage to a vessel or the environment. Pipelines may pass over bottom undulations, be buried or protrude above the seabed reducing charted depths. Vessels should avoid anchoring, trawling or conducting other underwater operations in the vicinity of the pipelines.

Note for chart Aus 318

To accompany Australian Notice to Mariners 826/2009

CAUTIONARY AREA

Vessels are to avoid navigating, anchoring or fishing within this area.

Note for chart Aus 318

To accompany Australian Notice to Mariners 826/2009

OIL AND GAS PIPELINES

Pipelines carry flammable oil or gas at high pressure. A damaged pipeline could cause an explosion, resulting in damage to a vessel or the environment. Pipelines may pass over bottom undulations, be buried or protrude above the seabed reducing charted depths. Vessels should avoid anchoring, trawling or conducting other underwater operations in the vicinity of the pipelines.

Note for chart Aus 725

To accompany Australian Notice to Mariners 826/2009

CAUTIONARY AREA

Vessels are to avoid navigating, anchoring or fishing within this area.

Note for chart Aus 725

To accompany Australian Notice to Mariners 826/2009

OIL AND GAS PIPELINES

Pipelines carry flammable oil or gas at high pressure. A damaged pipeline could cause an explosion, resulting in damage to a vessel or the environment. Pipelines may pass over bottom undulations, be buried or protrude above the seabed reducing charted depths. Vessels should avoid anchoring, trawling or conducting other underwater operations in the vicinity of the pipelines.

Note for chart Aus 726

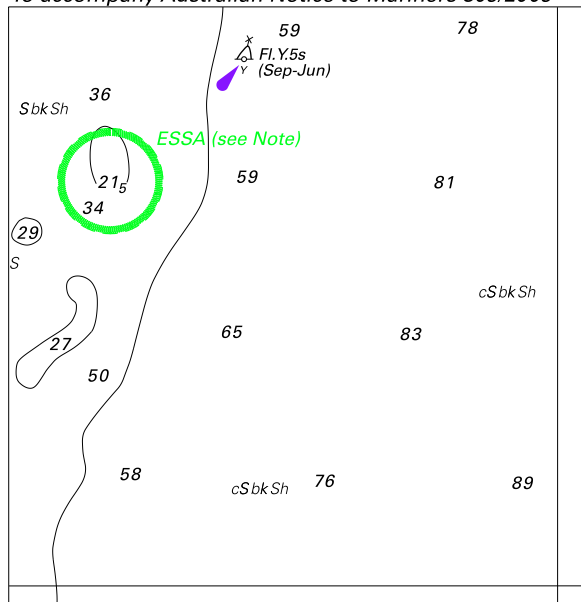
To accompany Australian Notice to Mariners 827/2009

AUSTRALIAN MARITIME JURISDICTION
(AMJ)

The territorial sea baseline and the outer limit of Australian maritime zones shown on this chart are sourced from the Geoscience Australia product Australian Maritime Boundaries (AMB). For Australian maritime boundary information see Australia Seafarers Handbook AHP 20.

Note for chart Aus 727

To accompany Australian Notice to Mariners 809/2009

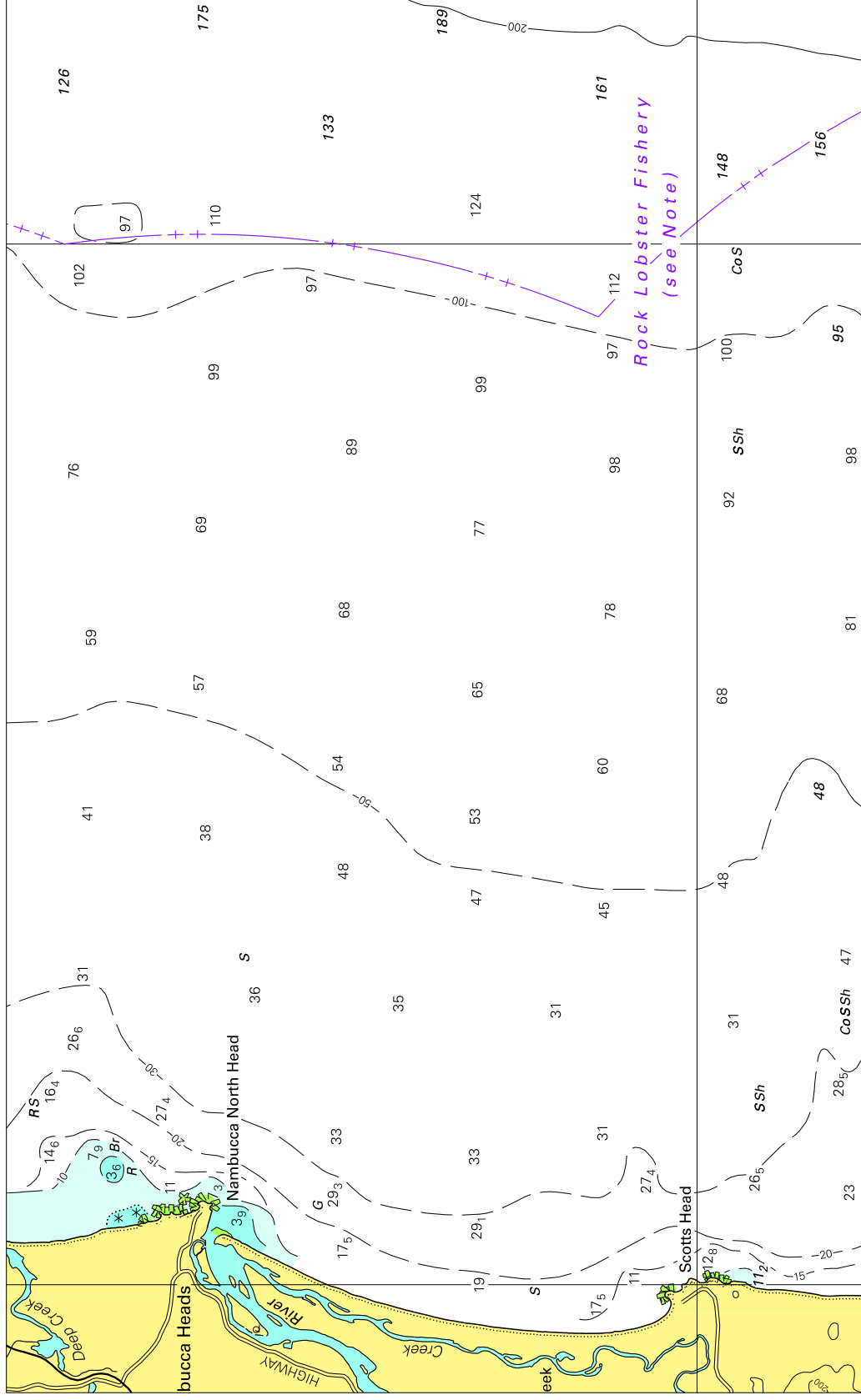


© Commonwealth of Australia 2009

Block for chart Aus 811

(76.6 x 79.1mm)

To accompany Australian Notice to Mariners 810/2009

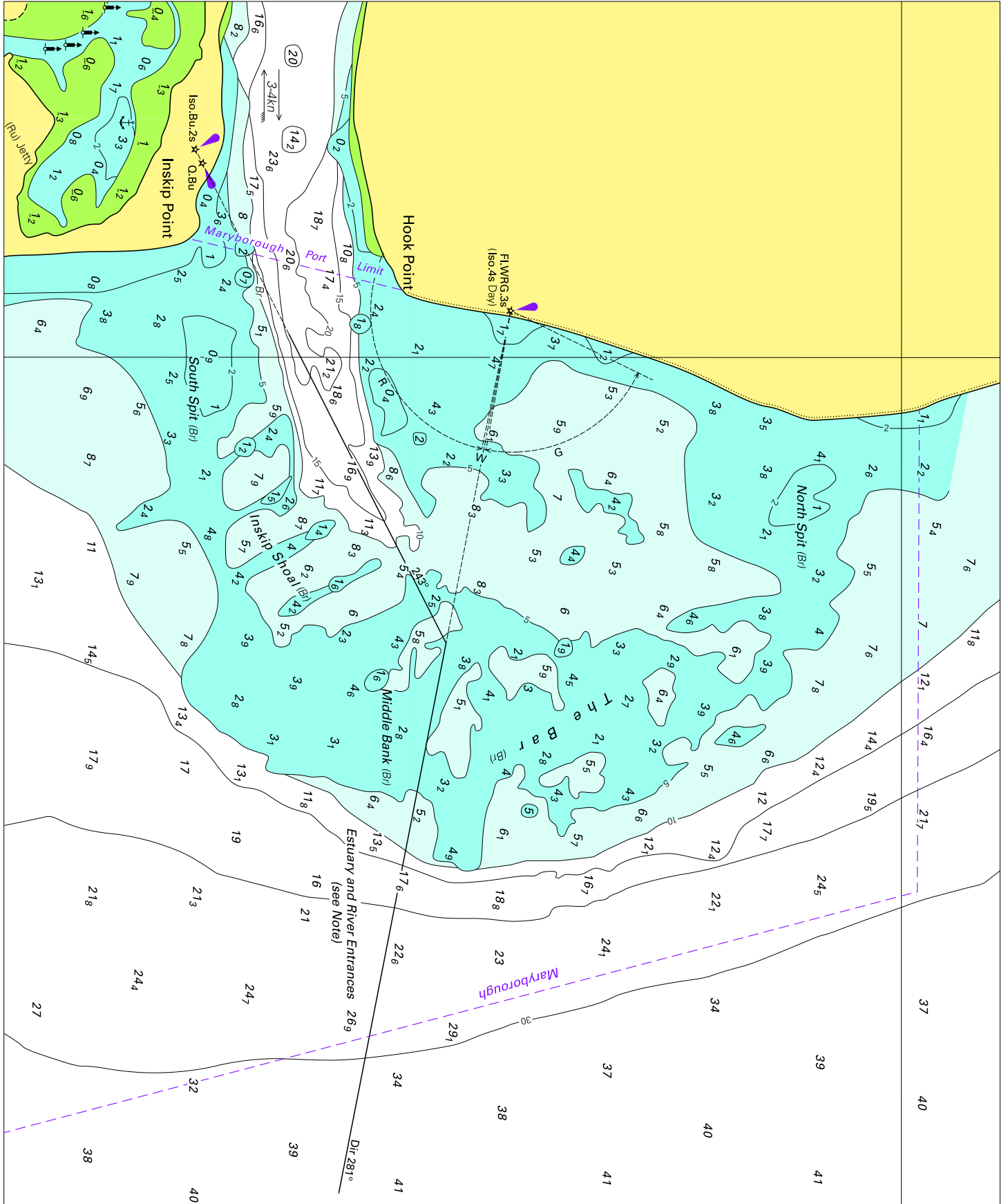


Block for chart Aus811

© Commonwealth of Australia 2009

(221.2 x 136.1mm)

To accompany Australian notice to Mariners 815/2009

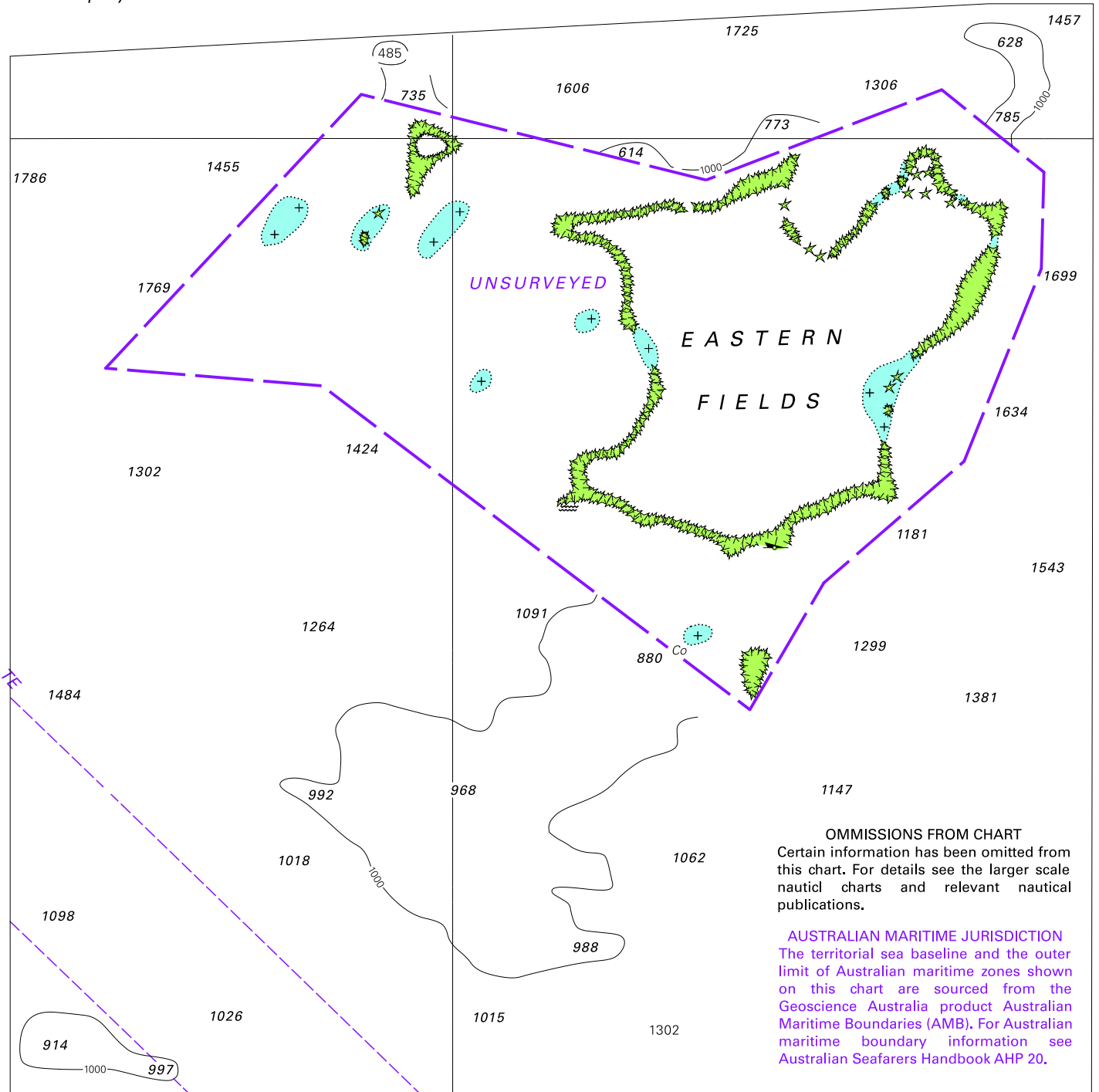


Block for chart Aus 240

© Commonwealth of Australia 2009

(230.5 X 190.7mm)

To accompany Australian Notice to Mariners 821/2009

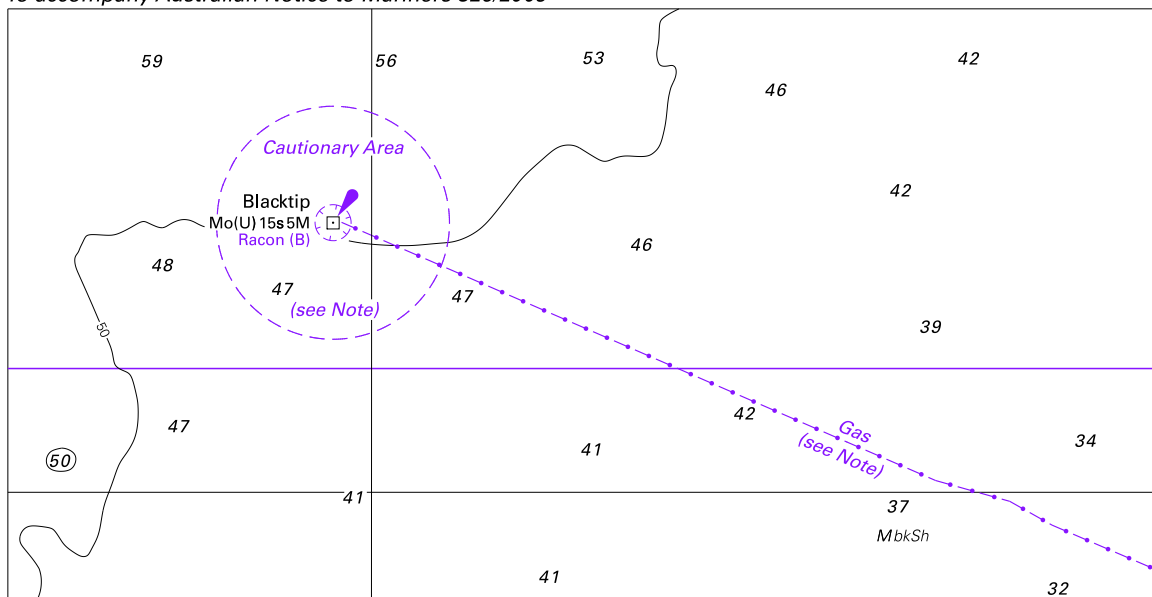


Block for chart Aus 377

© Commonwealth of Australia 2009

(185.3 x 187.2mm)

To accompany Australian Notice to Mariners 826/2009

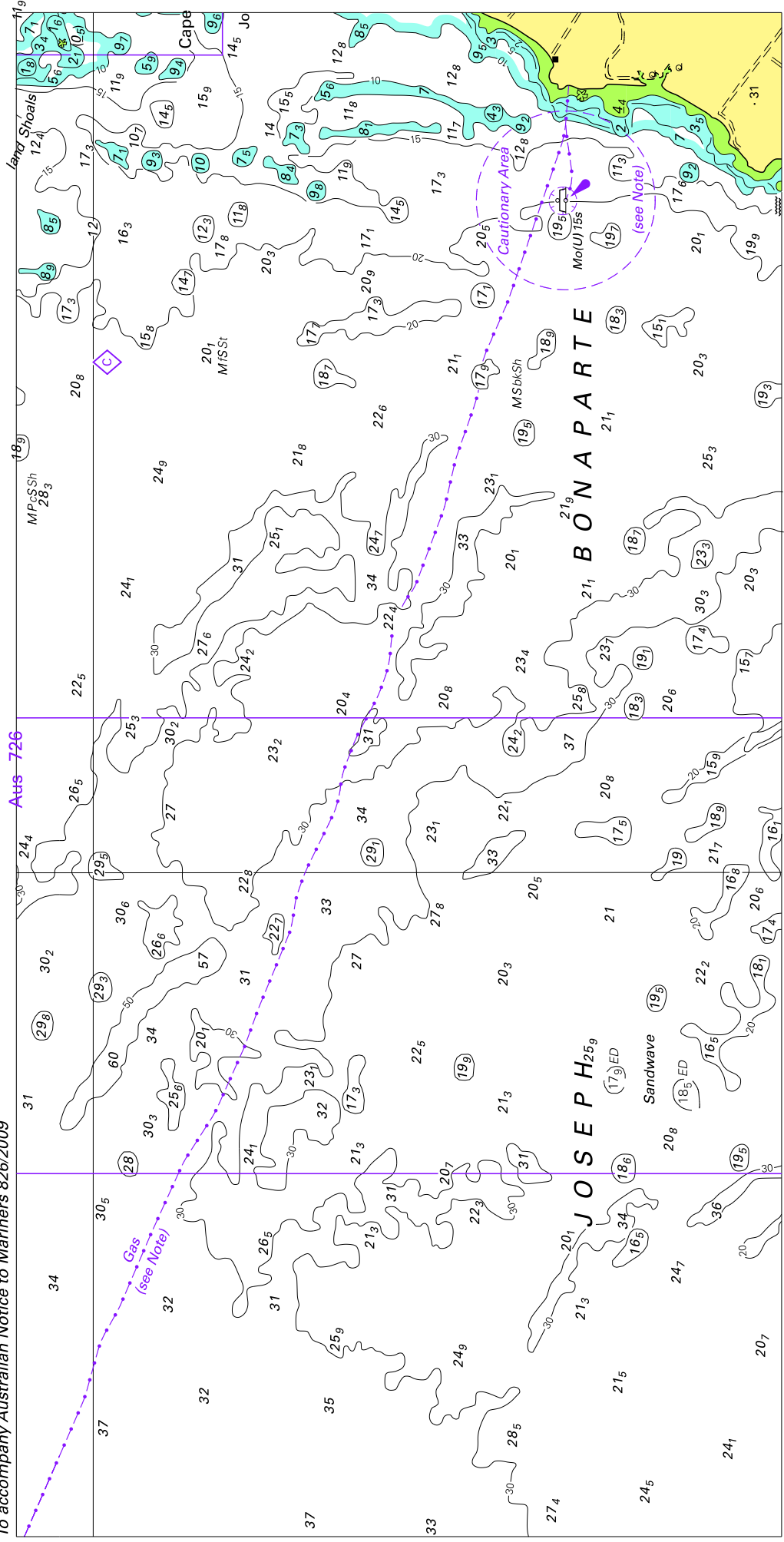


Block for chart Aus318

© Commonwealth of Australia 2009

(151.6 x 78.0mm)

To accompany Australian Notice to Mariners 826/2009

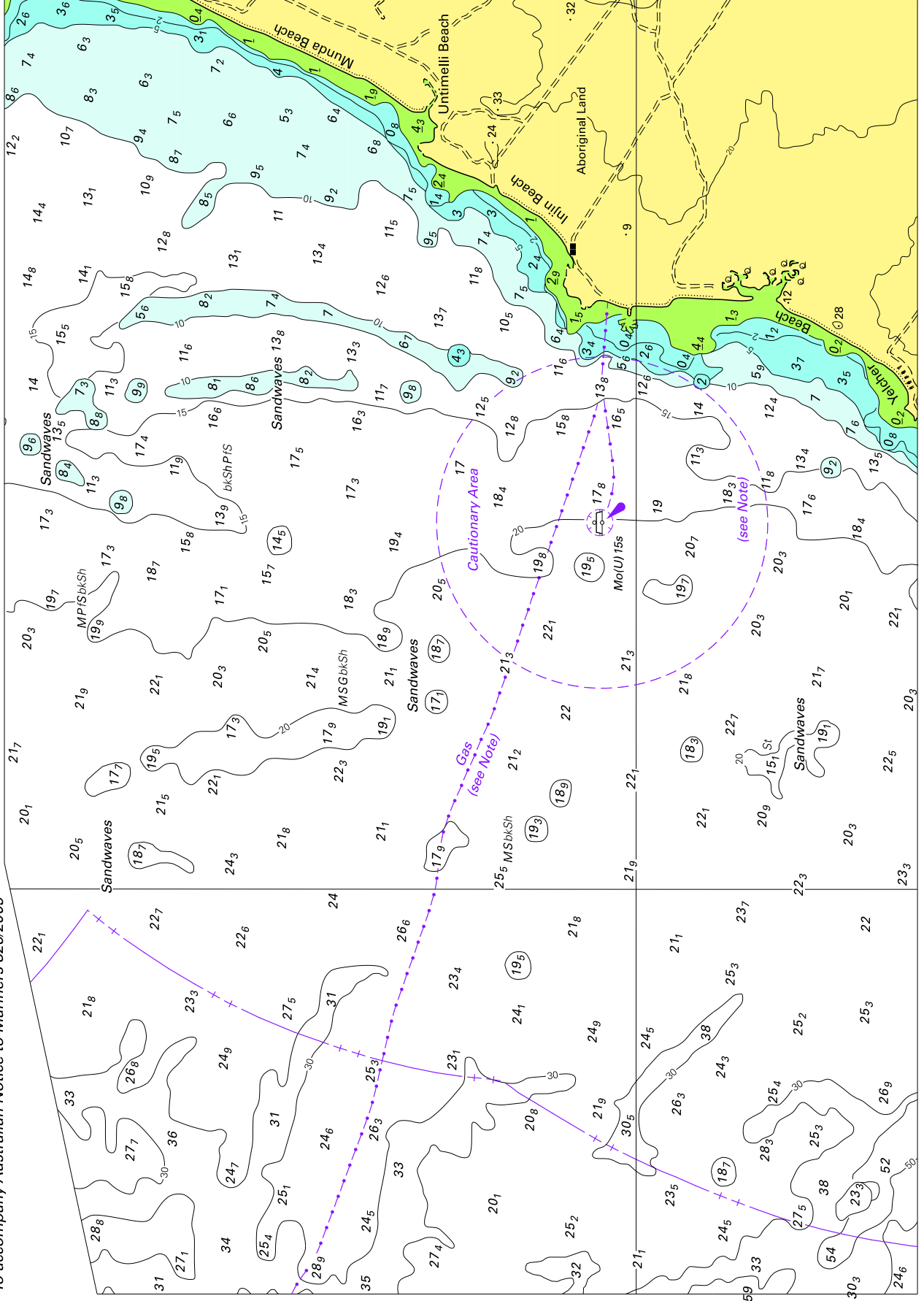


Block for chart Aus 316

© Commonwealth of Australia 2009

(131.8 x 262.5mm)

To accompany Australian Notice to Mariners 8226/2009

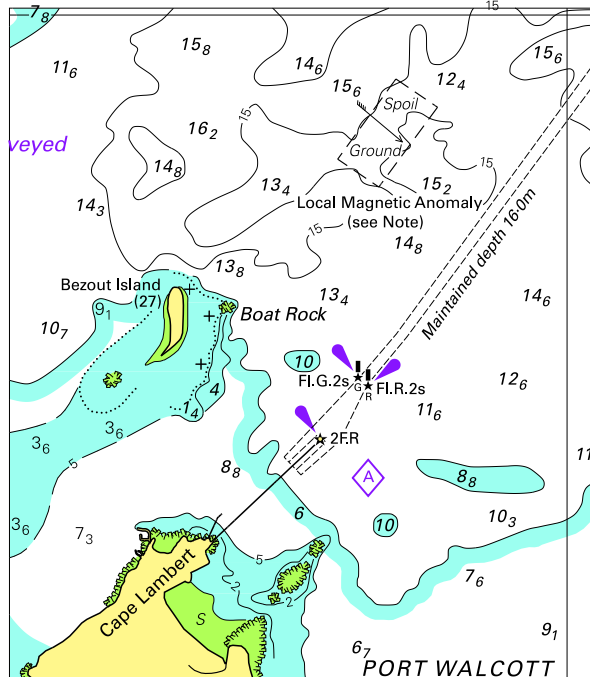


Block for chart Aus 725

© Commonwealth of Australia 2009

(234.5 x 165.5mm)

To accompany Australian Notice to Mariners 828/2009

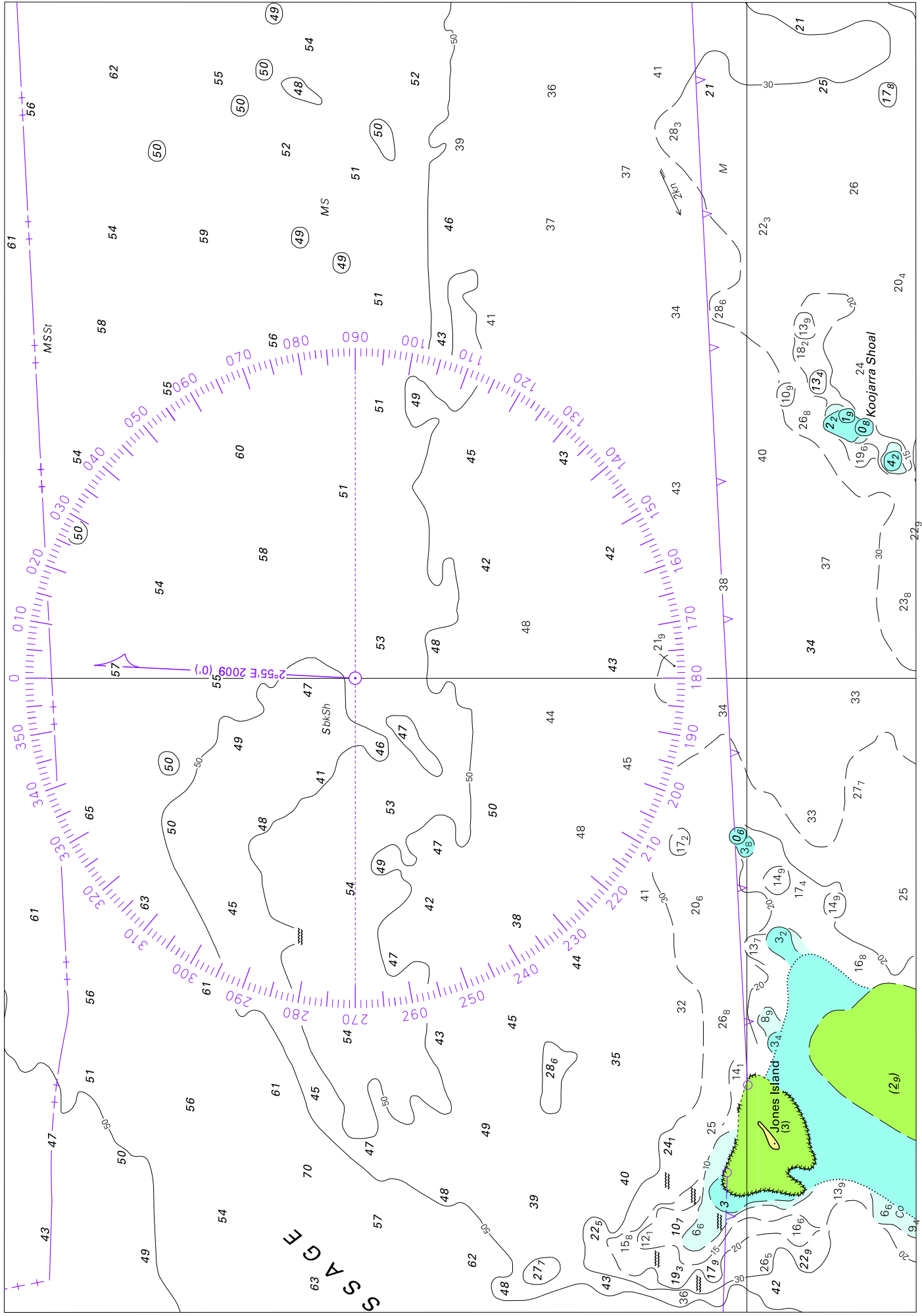


© Commonwealth of Australia 2009

Block for chart Aus 740

(77.8 x 98.1mm)

To accompany Australian Notice to Mariners 827/2009

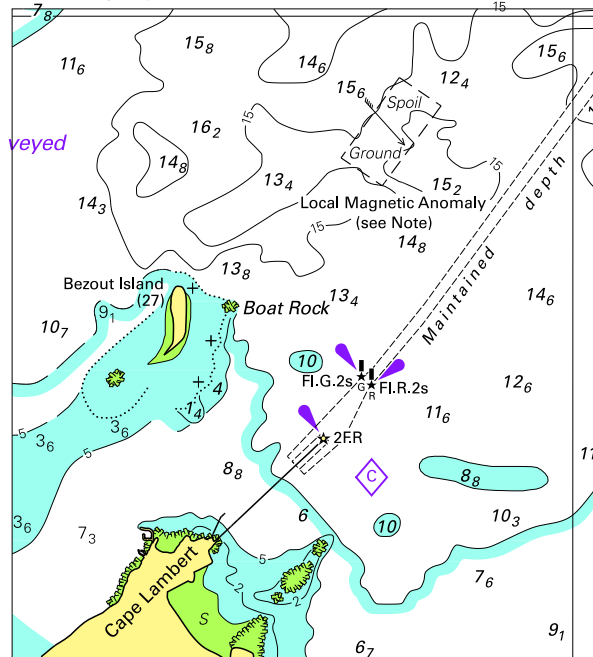


Block for chart Aus 727

© Commonwealth of Australia 2009

(263.4 x 163.3mm)

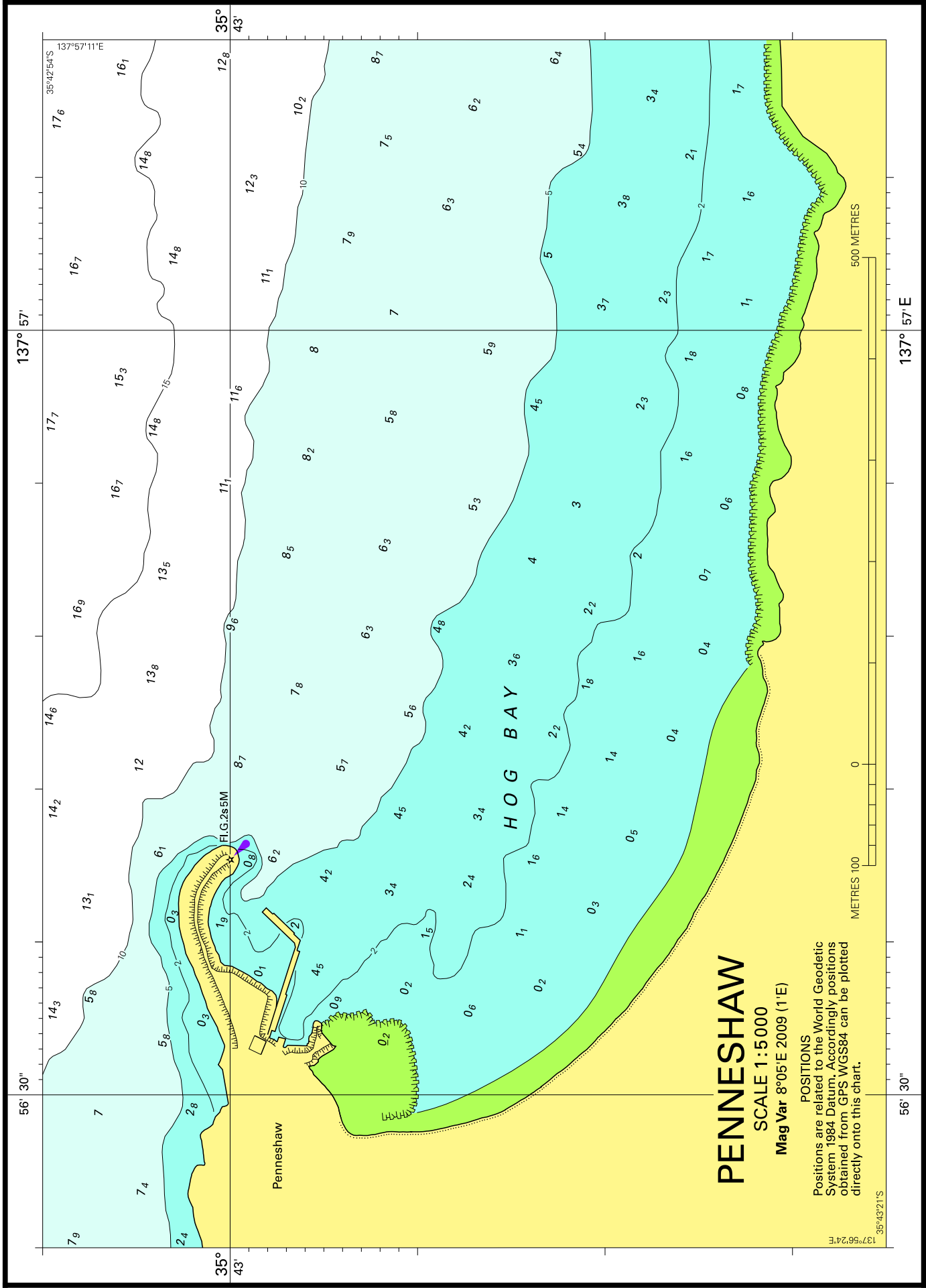
To accompany Australian Notice to Mariners 828/2009



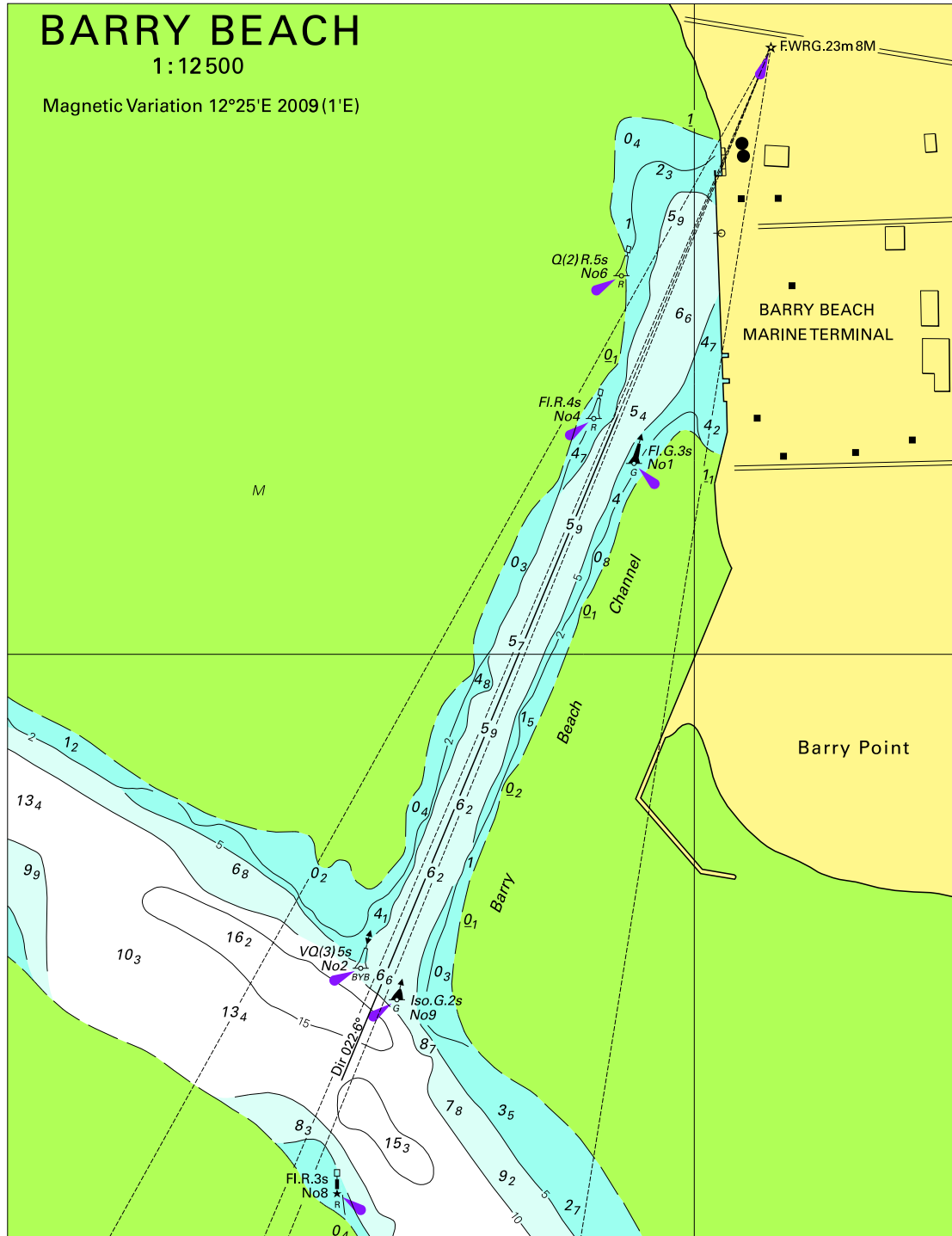
© Commonwealth of Australia 2009

Block for chart Aus 741

(77.9 x 86.2mm)



To accompany Australian Notice to Mariners 834/2009



Block for chart Aus 182

© Commonwealth of Australia 2009

(146.3 x 190mm)