

*To accompany Australian Notice to Mariners 750/2009*

HISTORIC WRECK

The site of an historic wreck is protected from unauthorised interference. For details see Australian Seafarers Handbook AHP 20.

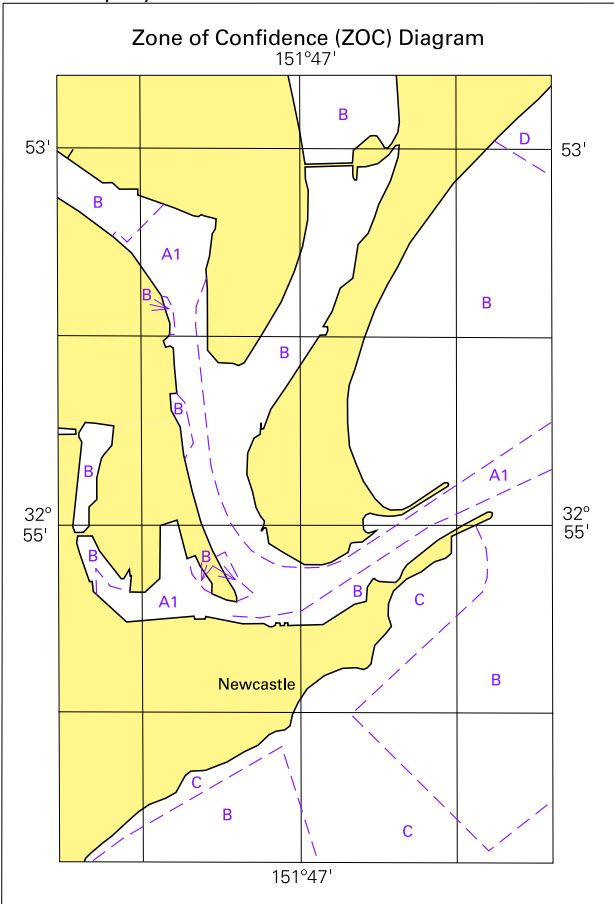
*Note for chart Aus 237*

*To accompany Australian Notice to Mariners 753/2009*

HISTORIC WRECK

The site of an historic wreck is protected from unauthorised interference. For details see Australian Seafarers Handbook AHP 20.

*Note for chart Aus 822*



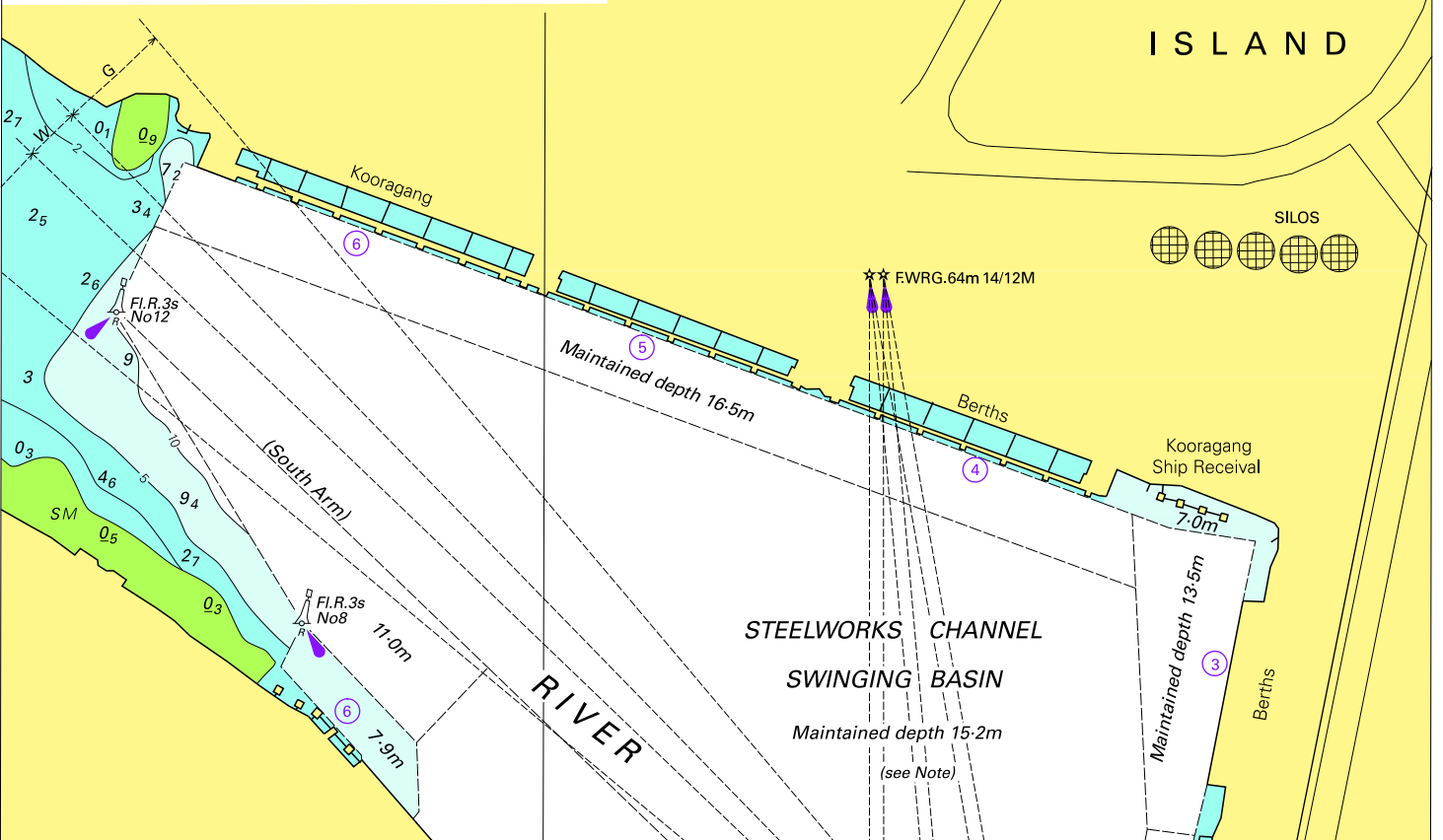
### ZOC CATEGORIES

(For details see Australian Seafarers Handbook, AHP 20)

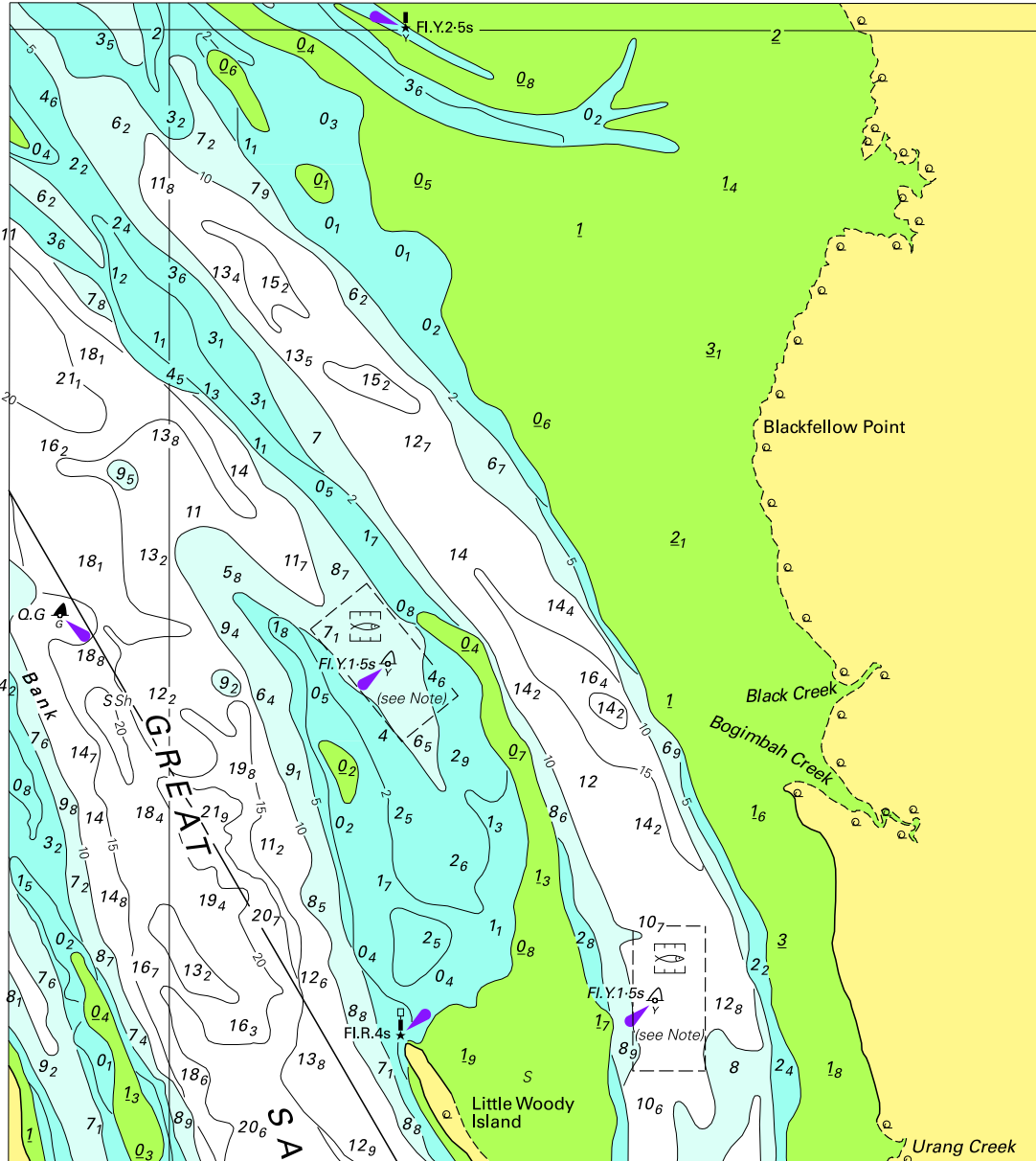
ZOC	POSITION ACCURACY	DEPTH ACCURACY	SEAFLOOR COVERAGE
A1	±5m	=0.50m + 1% d	All significant seafloor features detected
A2	±20m	=1.00m + 2% d	All significant seafloor features detected
B	±50m	=1.00m + 2% d	Uncharted features hazardous to surface navigation are not expected but may exist
C	±500m	=2.00m + 5% d	Depth anomalies may be expected
D	Worse than ZOC C	Worse than ZOC C	Large depth anomalies may be expected
U	Unassessed - The quality of the bathymetric data has yet to be assessed		

### Tidal Levels referred to Datum of Soundings

Place	Lat S	Long E	Heights in metres above datum					
			HAT	MHWS	MHWN	MSL	MLWN	MLWS
Newcastle	32°56'	151°47'	2.1	1.6	1.4	1.0	0.6	0.4



To accompany Australian Notice to Mariners 752/2009

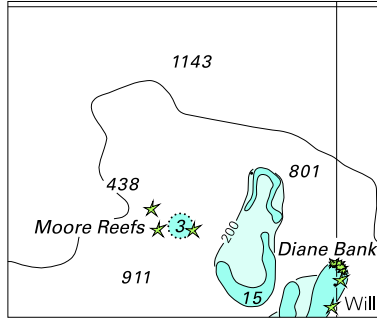


Block for chart Aus 241

© Commonwealth of Australia 2009

(142.7 x 159.9mm)

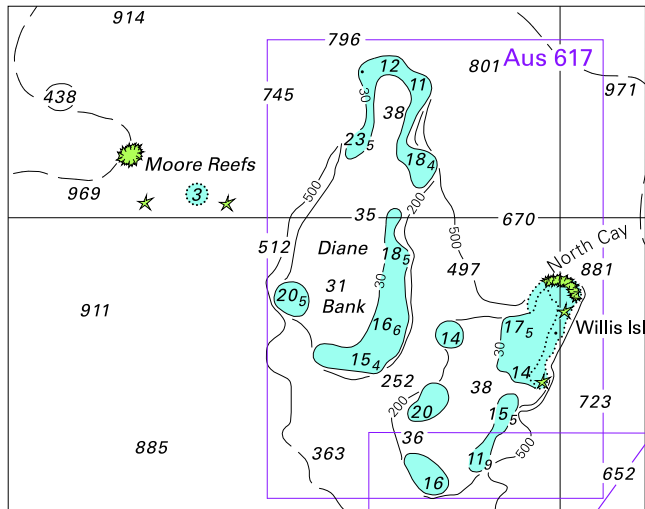
To accompany Australian Notice to Mariners 755/2009



© Commonwealth of Australia 2009

Block for chart Aus 4604 (49.2 x 41.8mm)

To accompany Australian Notice to Mariners 755/2009

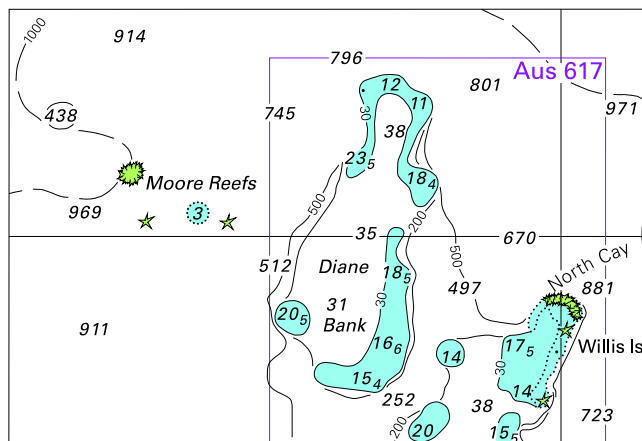


© Commonwealth of Australia 2009

Block for chart Aus 4620

(84.3 x 66.7mm)

To accompany Australian Notice to Mariners 755/2009

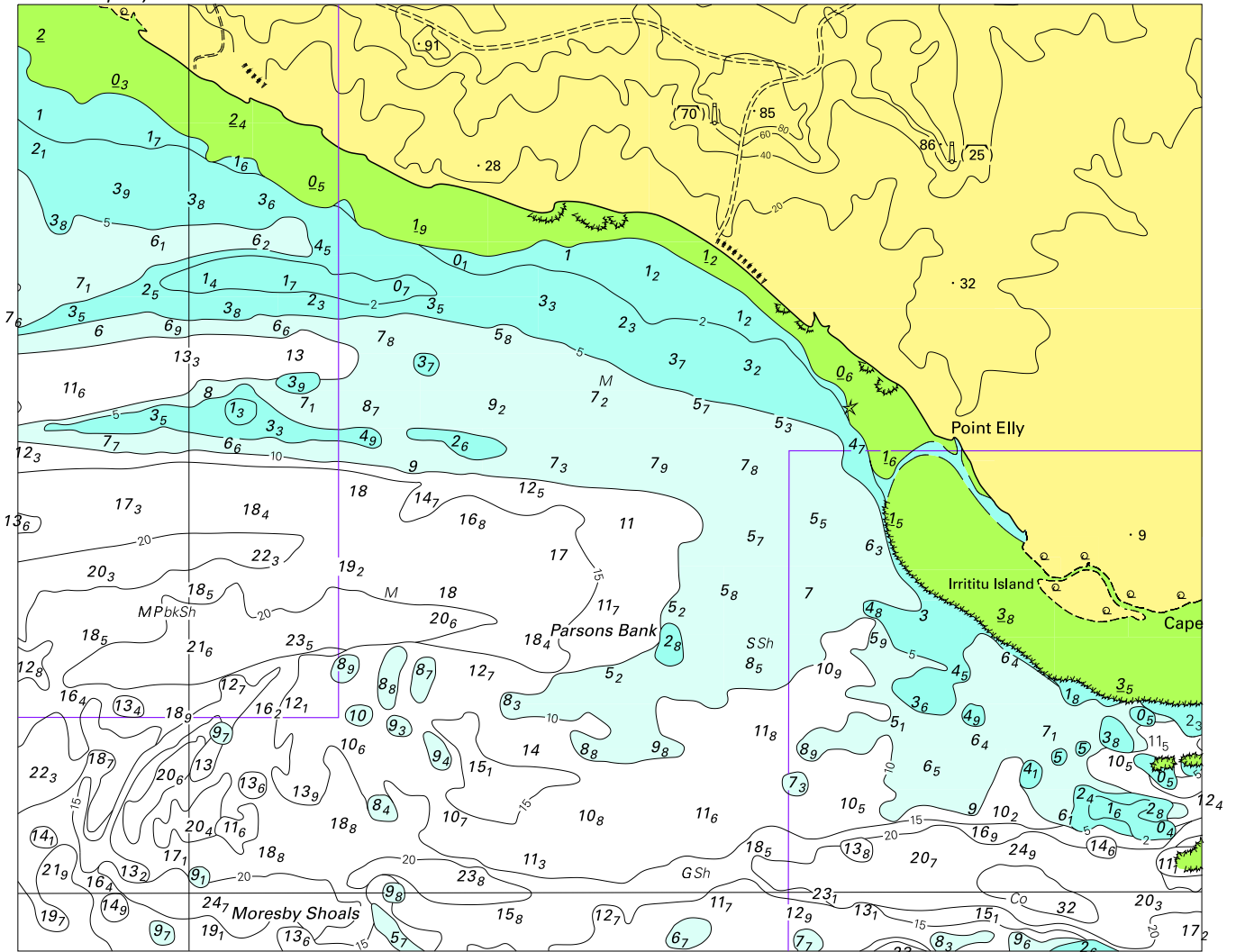


© Commonwealth of Australia 2009

Block for chart Aus 4621

(84.6 x 57.6mm)

To accompany Australian Notice to Mariners 761/2009



Block for chart Aus 722

© Commonwealth of Australia 2009

(173.8 x 139.0mm)

