

To accompany Australian Notice to Mariners 601/2009

HISTORIC WRECK

The site of an historic wreck is protected from unauthorised interference. For details see Australian Seafarers Handbook AHP 20.

Note for chart Aus 323

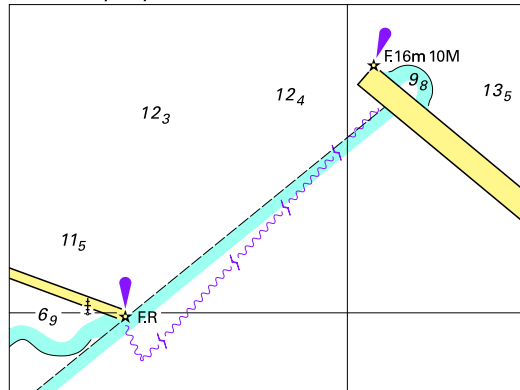
To accompany Australian Notice to Mariners 601/2009

HISTORIC WRECK

The site of an historic wreck is protected from unauthorised interference. For details see Australian Seafarers Handbook AHP 20.

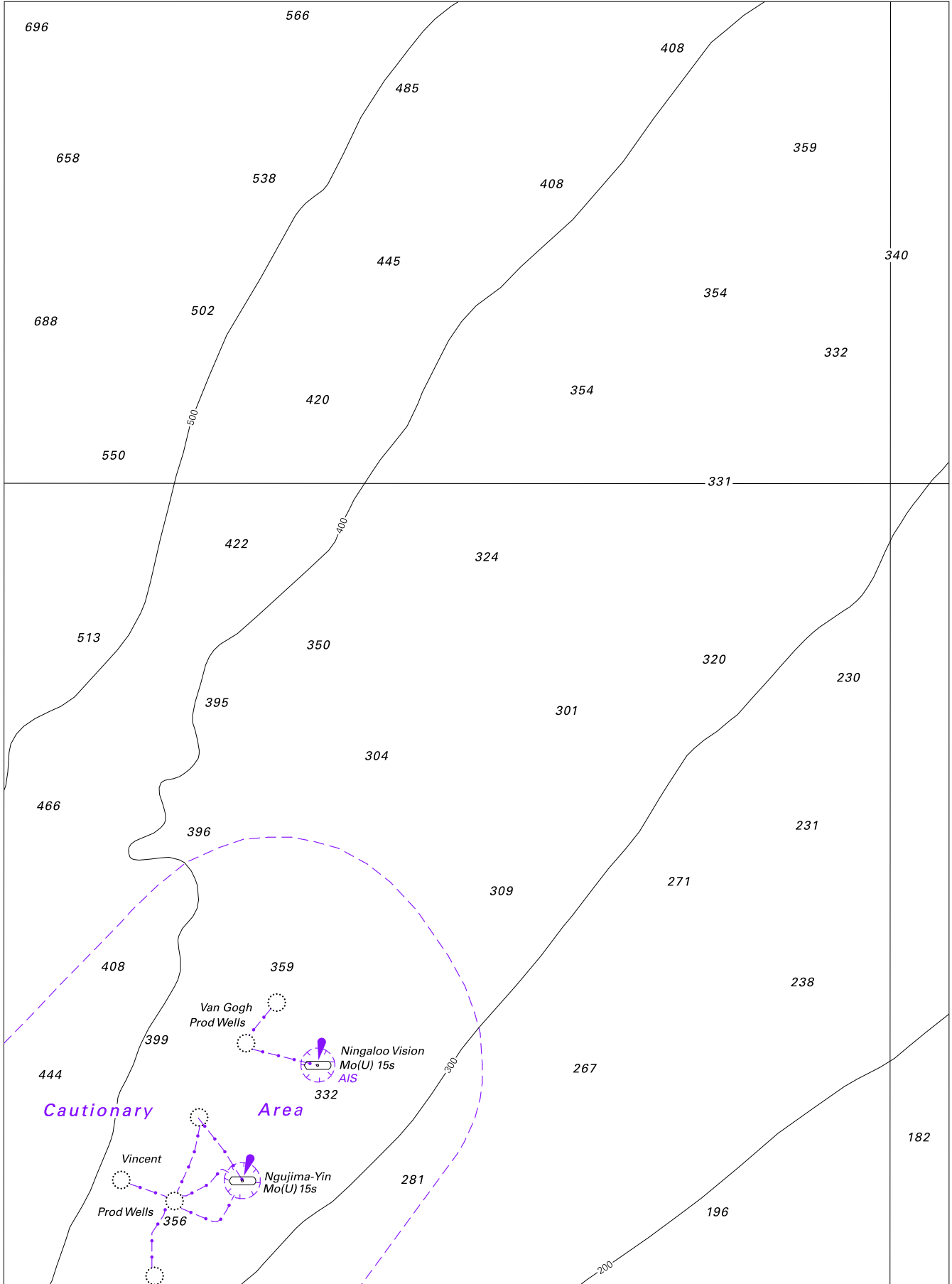
Note for chart Aus 324

To accompany Australian Notice to Mariners 611/2009



© Commonwealth of Australia 2009
Block for chart Aus163 (68.9 x 51.3mm)

To accompany Australian Notice to Mariners 605/2009



Block for chart Aus 744

© Commonwealth of Australia 2009

(176-0 x 239-4)