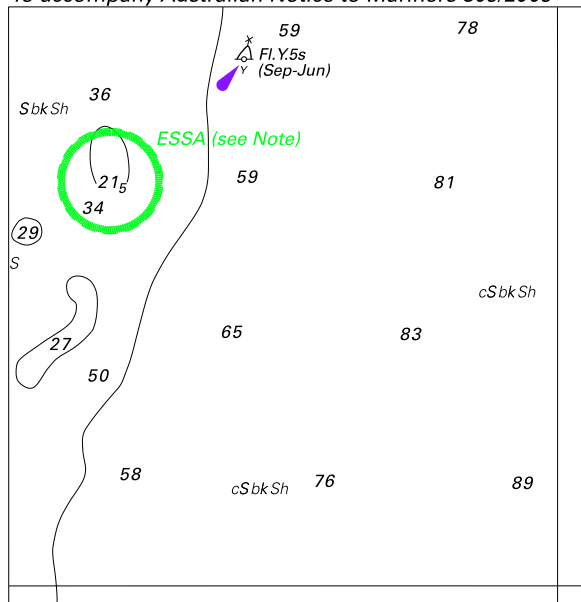


To accompany Australian Notice to Mariners 809/2009



© Commonwealth of Australia 2009

Block for chart Aus 811

(76.6 x 79.1mm)

To accompany Australian Notice to Mariners 809/2009

ENVIRONMENTALLY SENSITIVE SEA AREA (ESSA)

Areas of this chart are Environmentally Sensitive Sea Areas (ESSA). Areas within this marine protected area have restrictions on access and activities. See Australian Seafarers Handbook AHP 20.

Note for chart Aus 811