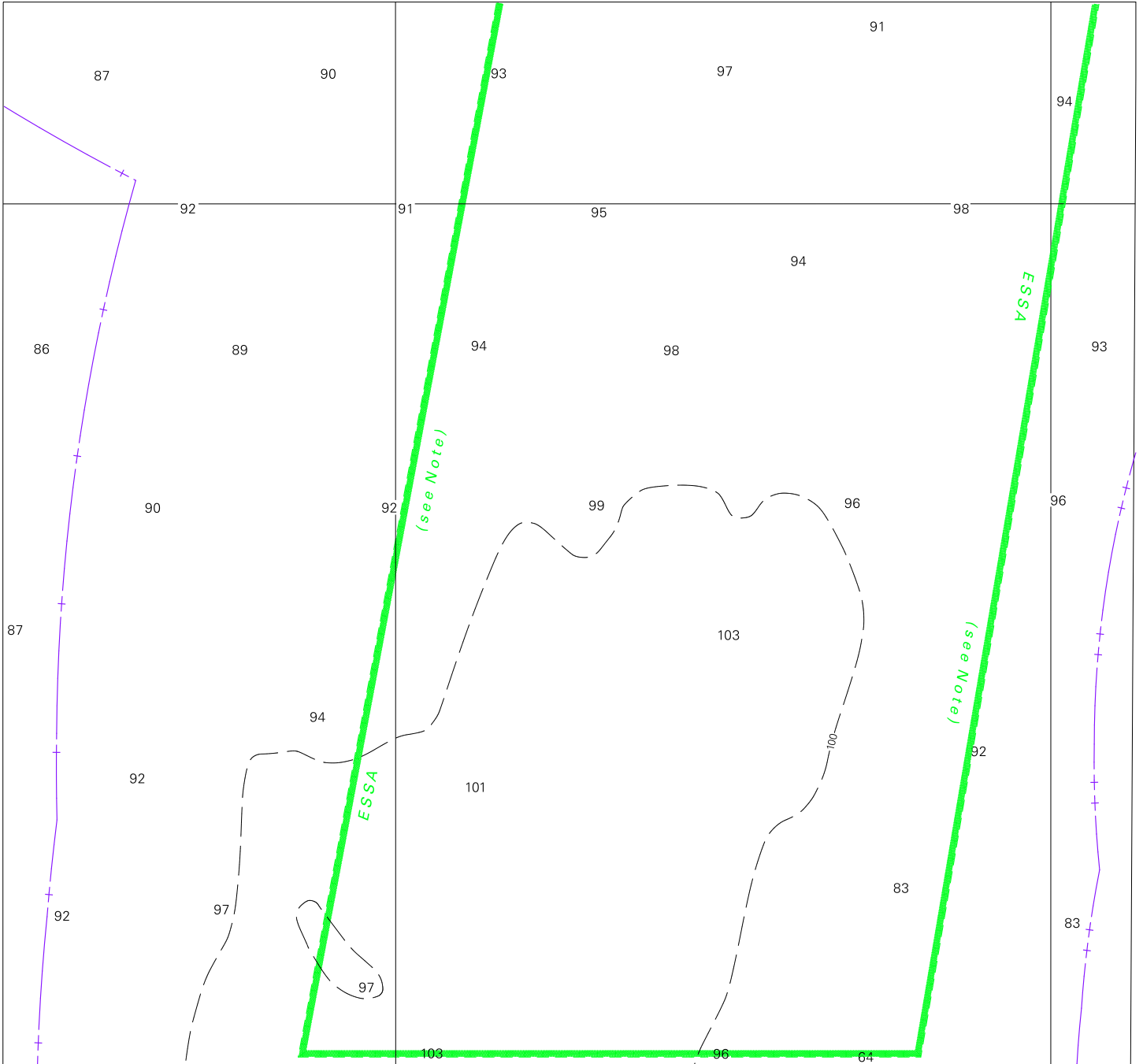


To accompany Australian Notice to Mariners 491/2009



Block for chart Aus 791

© Commonwealth of Australia 2009

(178.4 x 190.2mm)

## *To accompany Australian Notice to Mariners 491/2009*

### ENVIRONMENTALLY SENSITIVE SEA AREA (ESSA)

Areas of this chart are Environmentally Sensitive Sea Areas (ESSA). Areas within this marine protected area have restrictions on access and activities. See Australian Seafarers Handbook AHP 20.

*Note for chart Aus 791*

## *To accompany Australian Notice to Mariners 491/2009*

### AUSTRALIAN MARITIME JURISDICTION (AMJ)

The territorial sea baseline and the outer limit of Australian maritime zones shown on this chart are sourced from the Geoscience Australia product Australian Maritime Boundaries (AMB). For Australian maritime boundary information see Australia Seafarers Handbook AHP 20.

*Note for chart Aus 791*